

NHSN: Joining and Conferring Rights to the WI DPH - LTCF Group

The screenshot shows the NHSN web application interface. At the top, the CDC logo and the text 'Department of Health and Human Services Centers for Disease Control and Prevention' are visible. Below this, the NHSN logo and 'NHSN - National Healthcare Safety Network' are displayed. The user is logged in as ASHLIE at State Memorial Long-term Care Facility (ID 30203). The left navigation bar includes 'NHSN Home', 'Alerts', 'Reporting Plan', 'Resident', 'Event', 'Summary Data', 'Analysis', 'Surveys', 'Users', 'Facility', 'Group', and 'Log Out'. Under 'Group', the 'Join' option is highlighted with a red arrow. The main content area shows 'Groups that have access to this facility's data' with a table listing 'State Test LTCF Group (30578)'. To the right of the table are buttons for 'Confer Rights' and 'Leave Group(s)', both with 'HELP' links. Below the table, there is a section titled 'Enter ID and Password for this facility to join a new group' with input fields for 'Group ID' (containing '33839') and 'Group Joining Password' (masked with dots). A 'Join Group' button with a 'HELP' link is highlighted with a red box.

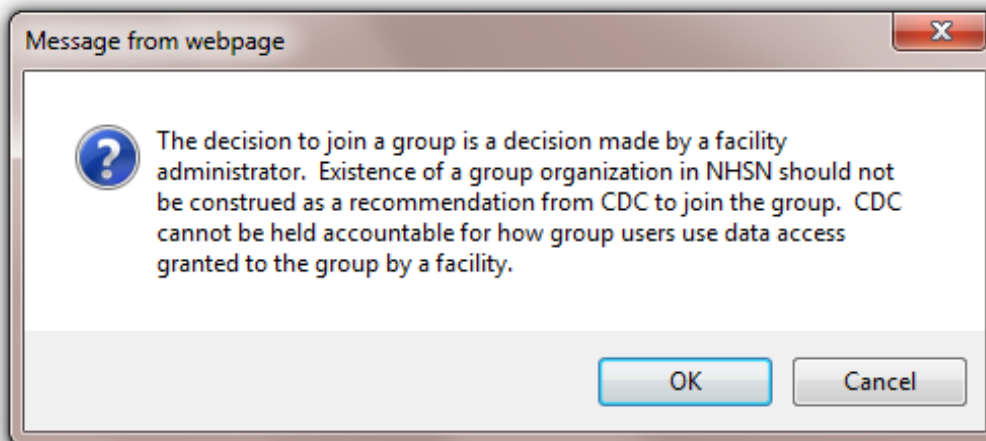
1. To join the WI DPH - LTCF Group, select "Join" under "Group" on the Nav Bar. Only facility administrators can join facilities to groups.

2. You will need to enter the Group ID and Group Joining Password for this group:

Group ID: 33839

Group Joining Password: wijoin

Click "Join Group."



3. A disclaimer message appears, indicating that joining a group is the facility's decision alone. Click "OK." Immediately after joining the group, you will be directed to confer rights.

NHSN: Joining and Conferring Rights to the WI DPH - LTCF Group

4. You'll see that the template is filled out for you, requesting data with specified identifiers of gender and DOB, which are needed for some of the analysis calculations, as well as viewing access to monthly reporting plans, annual facility surveys, the ability to perform data analysis on your data, and your general facility information (i.e., LTC facility name).

General	
	View Options
Resident	<input type="radio"/> With All Identifiers <input type="radio"/> Without Any Identifiers <input checked="" type="radio"/> With Specified Identifiers <ul style="list-style-type: none"> <input checked="" type="checkbox"/> Gender <input checked="" type="checkbox"/> DOB <input type="checkbox"/> Ethnicity <input type="checkbox"/> Race <input type="checkbox"/> Medicare # <input type="checkbox"/> Name <input type="checkbox"/> SSN <input type="checkbox"/> Resident ID
Monthly Reporting Plan	<input checked="" type="checkbox"/>
Long Term Care Annual Facility Survey	<input checked="" type="checkbox"/>
Data Analysis	<input checked="" type="checkbox"/>
Facility Information	<input checked="" type="checkbox"/>

Infections and other Events (Does not include MDRO/CDI Module)				
Includes Applicable Denominators and "No Events" Indicators				
Month	Year	Month	Year	Event
January	2012	To December	2021	UTI - Urinary Tract Infection
		Location type:	Location:	Other Location Requirements:
		FACWIDEIN	FACWIDEIN	<input type="text"/>
<input type="button" value="Add Row"/>		<input type="button" value="Clear All Rows"/>		

5. The first table, Infections and Other Events (Does not include MDRO/CDI Module), covers the UTI module. The template covers all facilities, so the time period is as wide open as NHSN allows (2012 through 2021). This does not obligate you to enter data for this entire period; it just indicates that if data are there during that time frame that DPH will be able to analyze them.

NHSN: Joining and Conferring Rights to the WI DPH - LTCF Group

MDRO/CDI Events
Includes Applicable Denominators and "No Events" Indicators

Month	Year	Month	Year	Location Type	Location	Other Location Requirements
January	2012	To December	2021	FACWIDEIN	FACWIDEIN	

Specific Organism Type:

- ACINE - MDR-Acinetobacter
- CDIF - C. difficile
- CEPHRKLEB - CephR-Klebsiella
- CRE - CRE (CRE-Ecoli, CRE-Enterobacter, CRE-Klebsiella)
- MRSA - MRSA
- MSSA - MSSA
- VRE - VRE

Event Type: LABID - Laboratory-identified MDRO or CDI Event

Add Row Clear All Rows

MDRO/CDI Process & Outcome Measures

Month	Year	Month	Year	Location Type	Location	Other Location Requirements
January	2012	To December	2021	FACWIDEIN	FACWIDEIN	

Process Measures

- Hand Hygiene
- Gown and Gloves

Add Row Clear All Rows

6. A similar set up for the MDRO/CDI module follows. The first table is for LabID events and the second is for process and outcome measures. Again, the template covers all reporting possibilities by having a wide time period, all organisms, etc. This just means if you do choose to report it, DPH will be able to see it.

Don't forget to click "Accept" at the bottom. If you don't, the rights will not be saved and the data will not be shared.

NHSN Home Logged into State Memorial Long-term Care Facility (ID 30203) as ASHLIE.
Facility State Memorial Long-term Care Facility (ID 30203) is following the LTCF component.

- Alerts
- Reporting Plan
- Resident
- Event
- Summary Data
- Analysis
- Surveys
- Users
- Facility

Conferred Rights saved successfully for group WI DPH - LTCF (33839).

Groups that have access to this facility's data

State Test LTCF Group (30578)	<input type="button" value="Confer Rights"/> <input type="button" value="HELP"/>
WI DPH - LTCF (33839)	

Memt

7. You will receive a confirmation message once the rights have been accepted. From this page you can use the navigation bar on the left to go to any other area of NHSN or log out.