

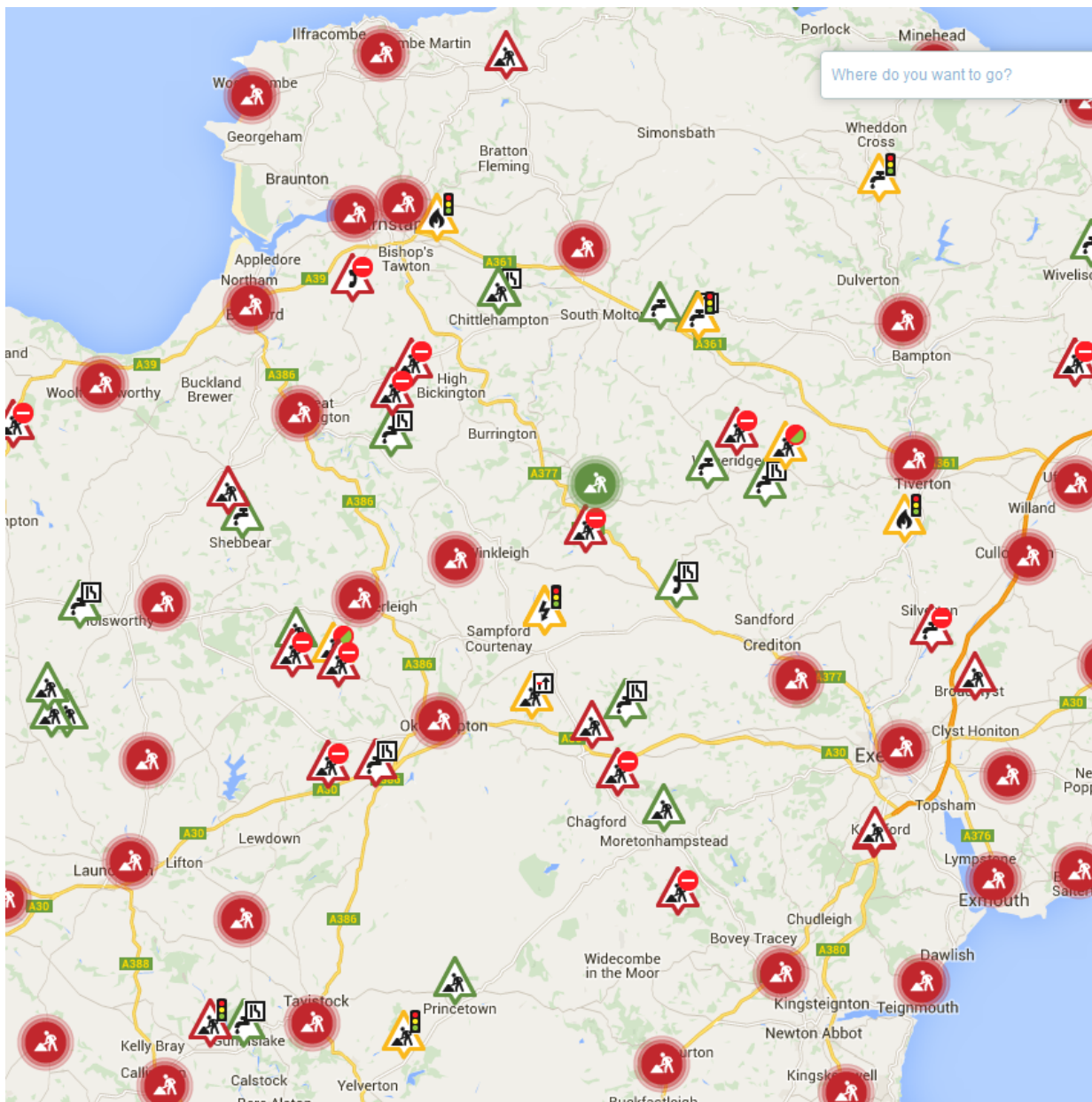
## ABOUT ROADWORKS.ORG

Roadworks.org is the largest single source of local roadworks information in the UK, publishing over 2 million roadwork's records annually.

Official roadworks information remains locked away in hundreds of different Local Authorities' Streetworks systems. ELGIN has developed technology, to harvest roadworks data from these systems automatically, remotely and securely. They then publish these millions of roadworks on a web map and keep them updated every few minutes.

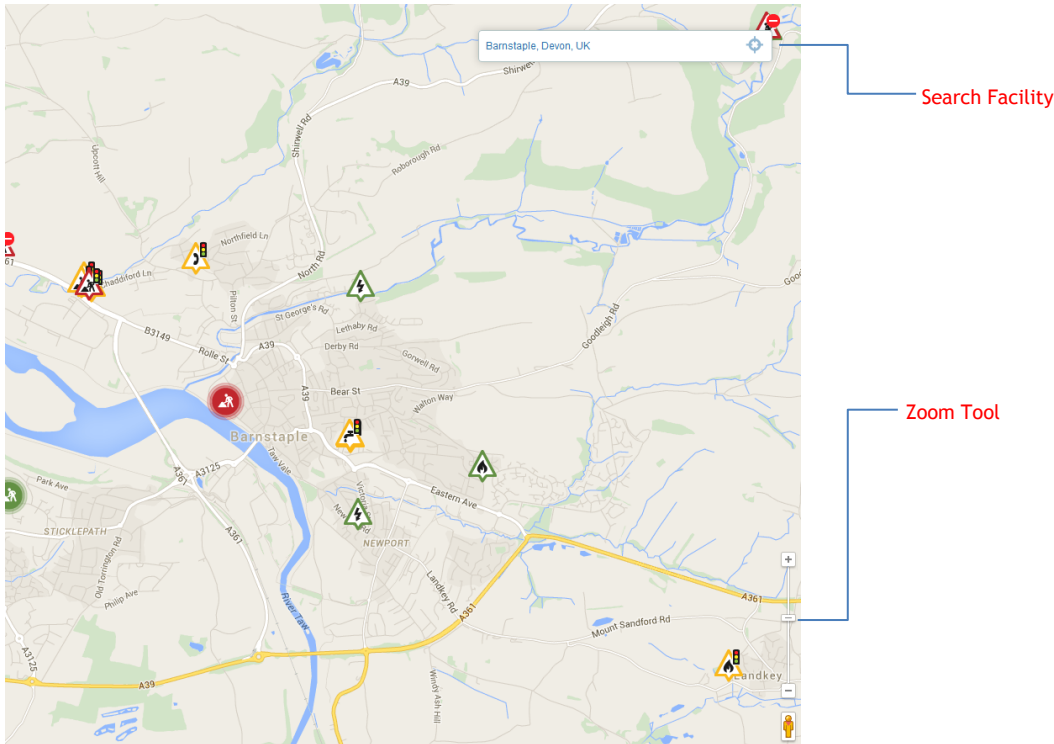
For Devon County Council, the Roadworks application pulls information directly from our streetworks register, within which all statutory undertakers are obligated, via the electronic transferral of notices procedure, to notify us of any and all works they are undertaking affecting our highways. Our own maintenance works are too becoming readily available to view, along with works on the highway being undertaken by private individuals and contractors.

With such a wealth of information at hand, the **devon.roadworks.org** website is rapidly becoming our main tool when co-ordinating works on Devon highways.



VIEWING WORKS BY AREA

Searching for specific geographical areas within Devon is easy and can be achieved either by dragging the map to the required location and then using the wheel on your mouse, or the zoom function on the bottom right of the screen to reach the desired scale, **OR** by entering your search in to the field to the top right of the screen - this could be a street name, postcode, town, grid reference, unique street reference number (USRN) etc.



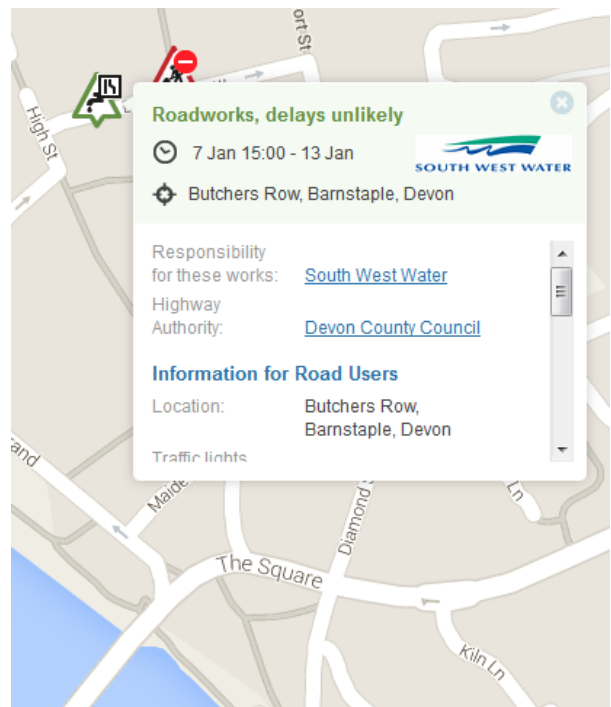
INTERROGATING WORKS

Clicking on a symbol on the map will bring up the key information relating to that particular work. From this we're able to see:

- **WHO** is undertaking the work.
- **WHEN** it's due to commence / end.
- The **LOCATION** of the works.
- A **DESCRIPTION** of the nature of the works.
- The proposed method of **TRAFFIC MANAGEMENT**.
- The current **STATUS** of the works notice – this could be advanced notification that they'll be taking place or if they're already happening.
- The streetworks **NOTICE NUMBER**.
- **CONTACT DETAILS** for those responsible for the works.

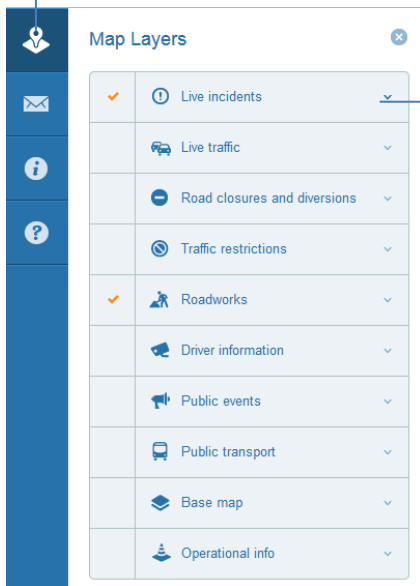
Symbols on the map use a colour coded system to denote the likely severity of impact on the travelling public:

- RED** indicates HIGH IMPACT WITH LIKELY DELAYS
- GREEN** indicates LOW IMPACT WITH DELAYS UNLIKELY
- AMBER** indicates MEDIUM IMPACT WITH POSSIBLE DELAYS



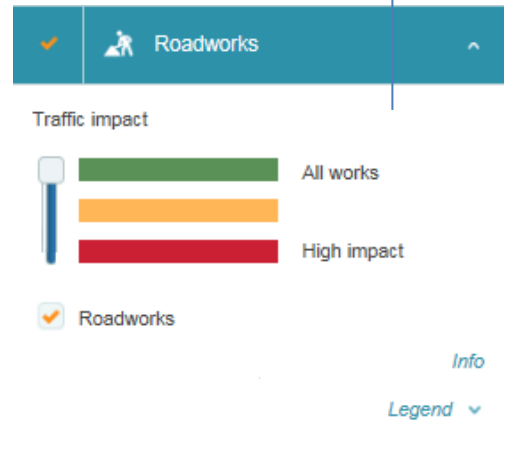
USING MAP LAYERS

Map Layers Button



Click to drop down individual layers to reveal options.

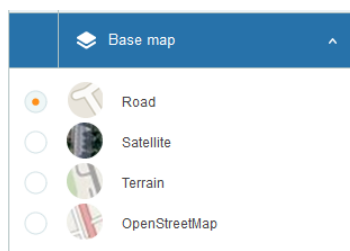
Date Search



By dropping down the 'Roadworks' layer, you can further refine by likely delays, works happening now, in the next 2 weeks, the next 12 months or even define own date search criteria by pressing the calendar symbol on the right.

Clicking the 'Map Layers' symbol in the upper left corner of the screen will open up the layers pane. Within here you can drop-down each of the individual layers options and select/de-select at your convenience, depending on what information you wish to appear on screen.

Amongst the other options, you can also refine your search by date, as above.



The 'Base Map' option will allow you to choose the base map layer - in some circumstances it might be beneficial to view the satellite view, in others the OS map might be more practical - this option allows you to switch between.

## SETTING UP EMAIL ALERTS

The roadworks application allows for you to set-up e-mail alerts, if you have a particular interest in a certain geographical area or road. The frequency of these alerts can be altered along with the criteria that trigger them.

To set up an e-mail alert:

- 1) Click the message symbol in the top left of the screen.
- 2) Once in 'Email Alerts' you are required to fill in your email address, a description of your filter and who you are.
- 3) Choose whether you require alerts for road closures and diversions, just roadworks, or both, by using the check boxes.
- 4) Choose also the level of traffic impact and whether you want to hear about other highway obstructions by checking/unchecking the boxes.
- 5) Select the frequency by which you want to receive the alerts.
- 6) Navigate and zoom in to your area of interest on the map.
- 7) Click 'SET ALERT'.

### E-mail Alerts

Sign up to receive email updates of upcoming roadworks, road closures and other traffic disruptions.

Email:

Description:

Who are you:

Get alerts on:

Get alerts for:

- Public events
- Roadworks

Traffic impact:

All works

High impact

Other highway obstructions

Frequency:  Daily  Weekly  Monthly