

# School-based Medicaid Professional Learning Community

Schools are critical access points to support both physical and behavioral health for students. School-based health services have been shown to improve both health and academic outcomes.

## You are invited to a Professional Learning Community (PLC)

Hosted by the Office of Superintendent of Public Instruction (OSPI) in partnership with the Health Care Authority (HCA) to uncover how School-Based Medicaid can support LEAs by reinvesting federal dollars back into schools.

## Purpose of the PLC

- Build shared understanding of Medicaid participation and fiscal reinvestment strategies.
- Showcase how Medicaid can sustain MTSS-aligned student supports.
- Promote team-driven shared leadership and transparent use of funds.
- Create a peer learning network between experienced and new Medicaid billing districts.

[Registration links are on pdEnroller](#)

More information about Medicaid funded school-based services:

[Medicaid funded school based services and supports fact sheet, 2023](#)



## Dates:

Kickoff: Medicaid 101 & Participation Models:  
January 14, 2026 | 2–3:30pm

Staffing, Readiness, Compliance Frameworks, and MTSS Alignment:  
March 9, 2026 | 1–2:30pm

Real-World Models of Medicaid Integration:  
April 22, 2026 | 9–10:30am

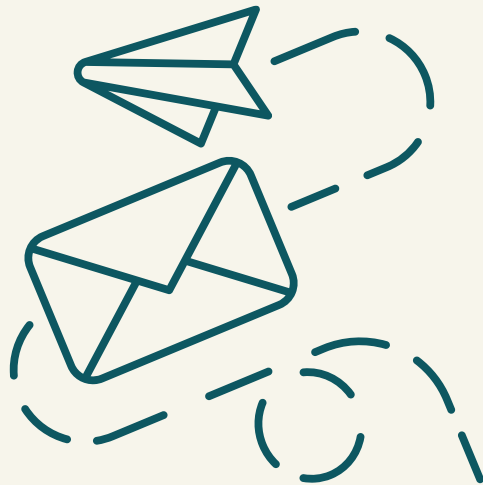
Sustainability & Forecasting: Building Fiscal Transparency and Reinvestment Plans:  
June 1, 2026 | 1–2:30pm



Washington Office of Superintendent of  
**PUBLIC INSTRUCTION**

# Questions?

Contact Bridget Underdahl at  
[bridget.underdahl@k12.wa.us](mailto:bridget.underdahl@k12.wa.us).



Washington Office of Superintendent of  
**PUBLIC INSTRUCTION**