



Supporting All Teachers* as Teachers of English Learners

*and paraprofessionals, and counselors, and library media
specialists ...



Purpose ...

- Introduce ExcEL as ***purposeful professional learning for educators working with English Learners*** and review opportunities for participation
- ExcEL is a program of UCLA, fully funded by the US Department of Education through the OELA/NPD program.



#allteachersareteachersof englishlearners

We focus on building skill for ALL
teachers (classroom, content, specials)
because EVERY teacher works with MLLs
in every classroom





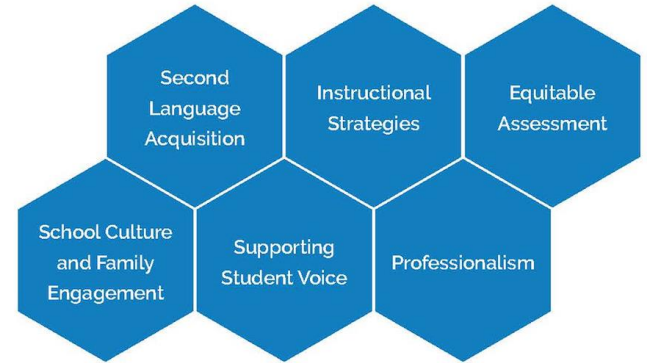
Micro-credential scaffold

- Professional learning is scaffolded by micro-credentials, aligned with the core competencies teachers need to work with MLLs
- Participants demonstrate competence through classroom implementation
- Aligns and complements ongoing professional development (ie, SIOP training)

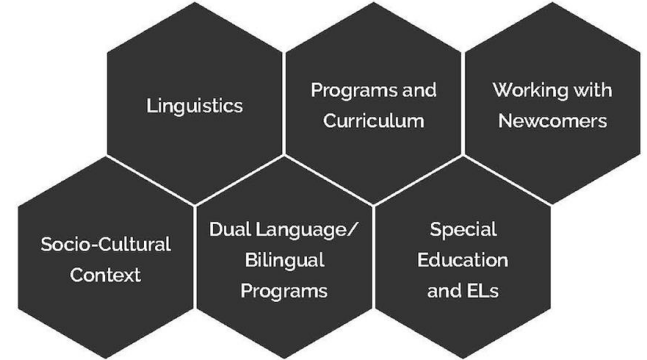


- All participants work towards the essential support endorsement
- Some teachers may choose to work towards the advanced support endorsement and become ESL/TESOL specialists

ESSENTIAL SUPPORT
FOR WORKING WITH
MULTILINGUAL LEARNERS
MICRO-ENDORSEMENT



ADVANCED SUPPORT
FOR WORKING WITH
MULTILINGUAL LEARNERS
MICRO-ENDORSEMENT





Recruiting teams now ...

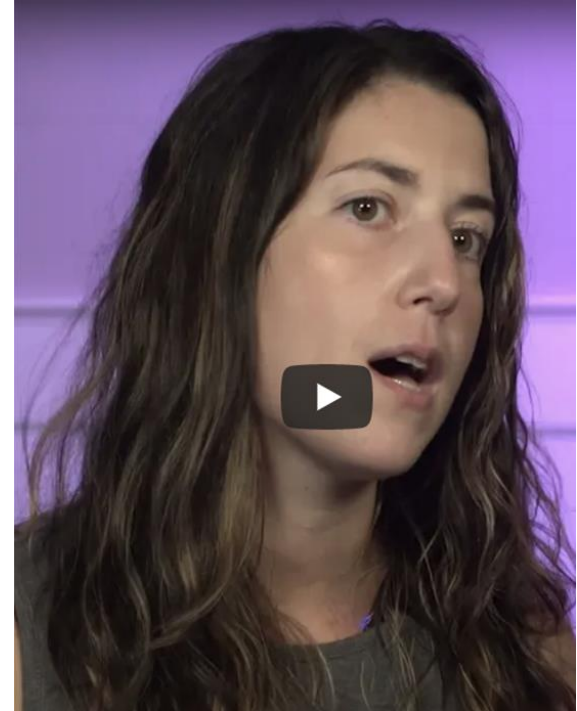
- 2 year commitment
 - Participants receive \$250 for *each* micro-credential completed
 - Graduate credit through UCLA available (1 credit for each micro-credential)
 - State clock hours available
- PLC structure (school-based/hybrid)





Participant and Team Support

- Teams of 5-7 participants (school-based/hybrid)
- Site facilitator
 - Receives a stipend of \$2500 for the year
- Peer network and mentoring, other supports
- Design studios, workshops, conferences, other events





Existing WA Teams and Contacts

- NWESD - Heidi Lamare
 - hlamare@nwesd.org
- ESD123 - Jennifer Cowgill
 - jcowgill@esd123.org



Next Steps

Visit [ExcEL's website](#) for more information and good 'explainer' videos

Please complete this [survey](#) if your district is interested in participating in this program beginning summer of 2024. Contact [Kristin Percy Calaff](#) at OSPI for questions.

Laureen Avery,
avery@gseis.ucla.edu

<https://www.excelleadershipacademy.org/>
@uclaEXCEL