



P-3 SCHOOL IMPROVEMENT MONTHLY BITE



Washington Office of Superintendent of
PUBLIC INSTRUCTION



AESD ASSOCIATION OF
EDUCATIONAL
SERVICE DISTRICTS
NINE ESDs. ONE NETWORK.
Supporting Washington's Schools and Communities

**FOR MORE INFORMATION AND SUPPORT,
CONTACT YOUR REGIONAL ESD P-3
COORDINATOR**

NEWESD 101 (Spokane)
[Kristin Monson](#)

Capital Region ESD 113 (Tumwater)
[Hilary Prince](#)

ESD 123 (Pasco)
[Jennifer Kelly](#)

ESD 105 (Yakima)
[Maggie Mendoza](#)
[Cynthia Juarez](#)
[Angelica Hernandez](#)

OESD 114 (Bremerton)
[Kristen Sheridan](#)
[Kim Crummey](#)

NCESD 171 (Wenatchee)
[Janelle Bersch](#)
[Jan Dosh](#)

ESD 112 (Vancouver)
[Jodi Wall](#) [Sara Rushlo](#)
[Jackie Brock](#)

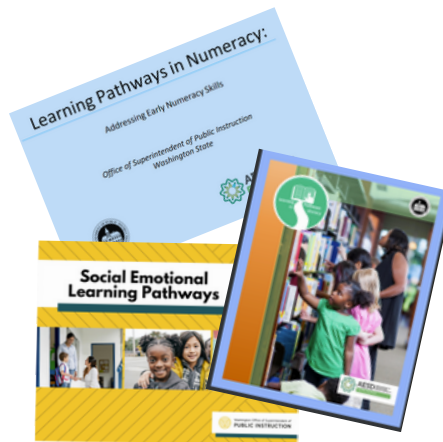
PSESD (Renton)
[Whitney White](#)

NWESD 189 (Anacortes)
[Sarah Southard](#)
[Maureen Hodge](#)

Executive Director of Early Learning, OSPI
[Samantha Bowen](#)

Statewide P-3 OSSI Coordinator
[Rachel Eifler](#)

Mastery Based Early Learning



Mastery based learning only happens when children are met where they are and challenged. Learning is predictable, but not rigid, and all children learn along developmental continuums. Administrators can support teachers by providing professional development, support and resources around developmental progressions and how to use them in the classroom. Check out [OSPI's Early Learning Website](#) for links to birth through third grade progression documents.



A framework for supporting all young learners is universal design. The universal design of early learning “suggests that instead of creating a curriculum and then adapting it to meet the needs of individual children in the program, it is better to start off with an instructional design which provides learners with a variety of ways to access and process information and demonstrate what they have learned” (Blagojevic, Twomey, & Labas 2002). Click the heading to access the article for more information.



Structures and Processes for Professional Learning

How are districts offering professional development specific to P-3 curriculum and instruction? In this video link Dr. Kristie Kauertz explains the importance of this systemic approach to professional learning .

Join our PreK-3rd Grade Leadership Network!

District teams will learn with the [National P-3 Center](#) through a systemic process focused on the following 6 areas:

1. Mission and Strategic Plan with P-3 Goals
2. Central Office Organization and Culture
3. Decision Making Practices Supported by Aligned Data
4. Investments in Professional Learning
5. External Relations and Cross-Sector Strategies, and
6. Access to Programming.

