

# CONNECTING



**Eastrail**

**NORTHUP  
CONNECTOR  
PROJECT**

 King County

**PARKS**

**Your Big Backyard**

# **NORTHUP CONNECTOR PROJECT –**

## **QUICK FACTS:**

### **WHY DO WE NEED IT?**

- **The project connects the Eastrail, the principal north-south bike route on the east side, with the SR 520 trail, the highest volume east-west route.**
- **The Eastrail currently passes under the route of the SR 520 trail, with a grade difference of over 20 vertical feet.**

### **HOW WILL IT BE BUILT?**

- **The only available site for the connector is complex, with wetlands, steep slopes and underground utilities.**
- **To navigate those constraints, the connector will be built as an elevated boardwalk supported by pin piles.**
- **This construction method will minimize environmental impact and be a distinctive structure with opportunities for design enhancement.**
- **In addition to the ramp, the project also includes bike-friendly modifications to the signalized intersection where the ramp meets Northup Way.**

### **IS THERE SUPPORT FOR THE PROJECT?**

- **Yes!**
- **The City of Bellevue, NGO's, and the public are all eager to see this completed.**
- **The County has heard from a wide range of trail users who would be using this connection right now if it was available.**

EASTRAIL

SR 520 TRAIL /  
NORTHUP  
BIKE FACILITY

NORTHUP  
CONNECTOR  
PROJECT

SR 520



Facebook

**Eastrail**  
NORTHUP  
CONNECTOR  
PROJECT

**CONTEXT MAP**



King County

**PARKS**

Your Big Backyard

**TRAIL**

**RAMP**

**NORTHUP WAY**

**SR 520**

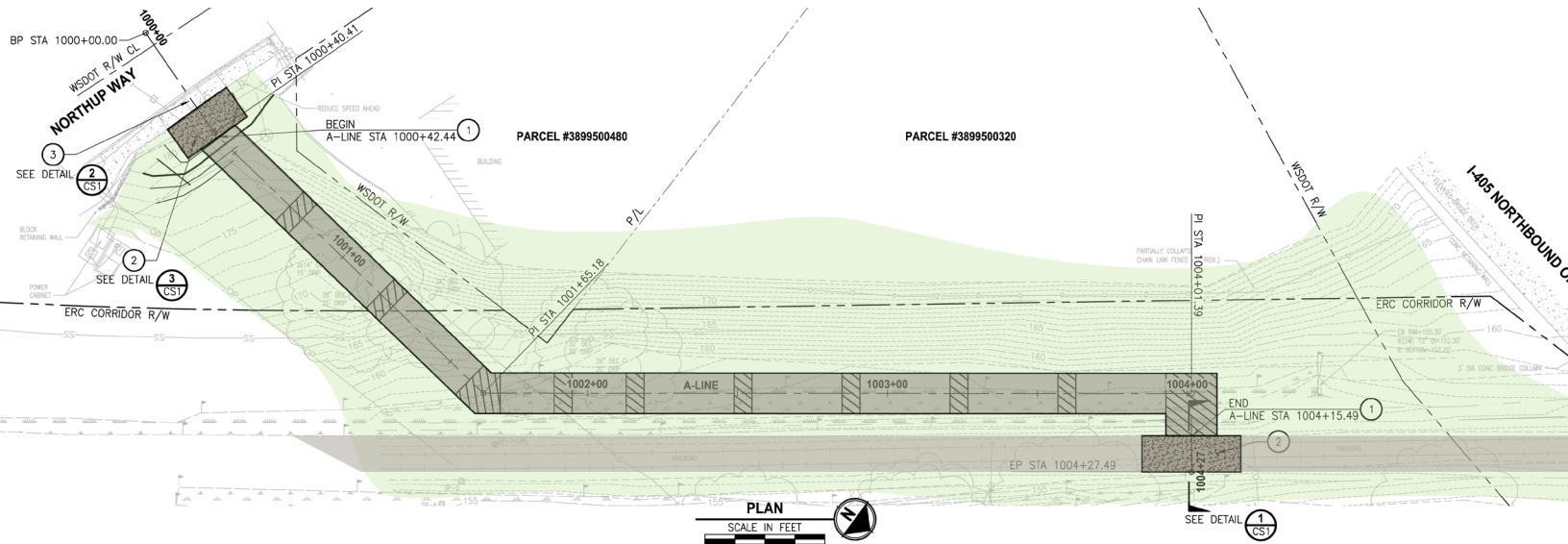
**I 405**

**Eastrail**

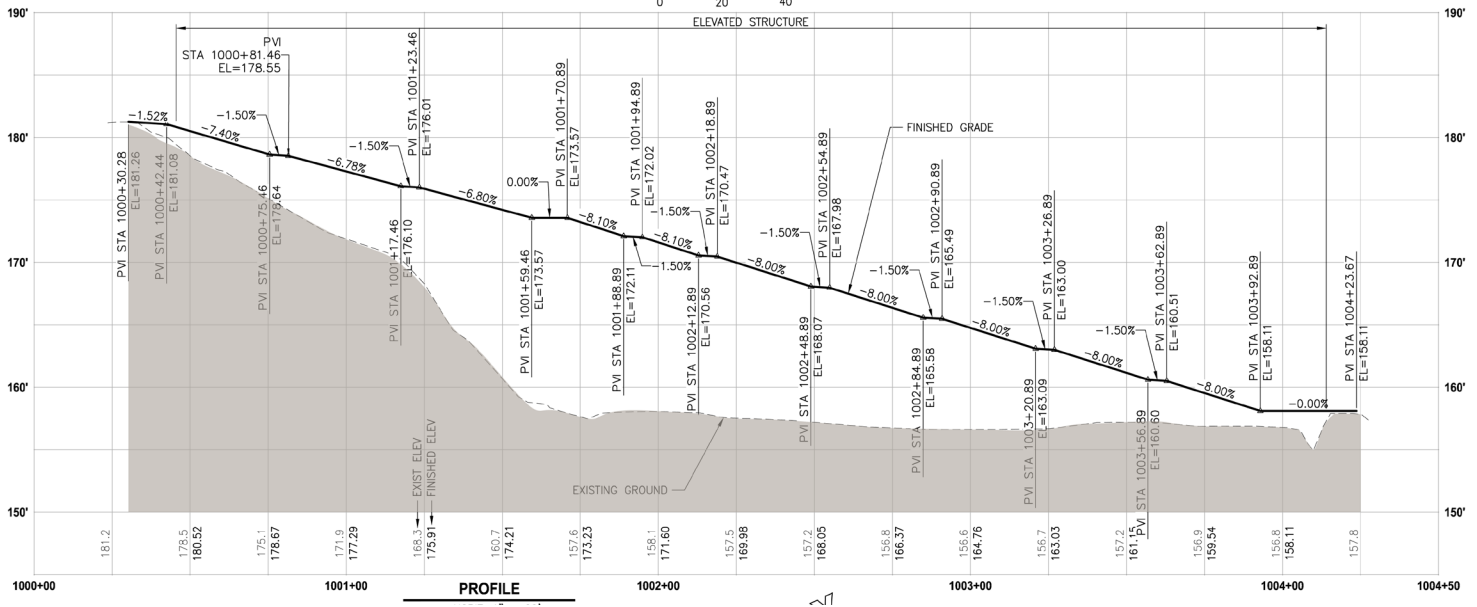
**NORTHUP  
CONNECTOR  
PROJECT**

**SITE PLAN**





PLAN  
 SCALE IN FEET  
 0 20 40



# Eastrail NORTHUP CONNECTOR PROJECT

# PRELIMINARY DESIGN



**Eastrail**  
NORTHUP  
CONNECTOR  
PROJECT

**PERMATRAK BOARDWALK  
SYSTEM**