

# McLean District Police Station Crime Prevention Office

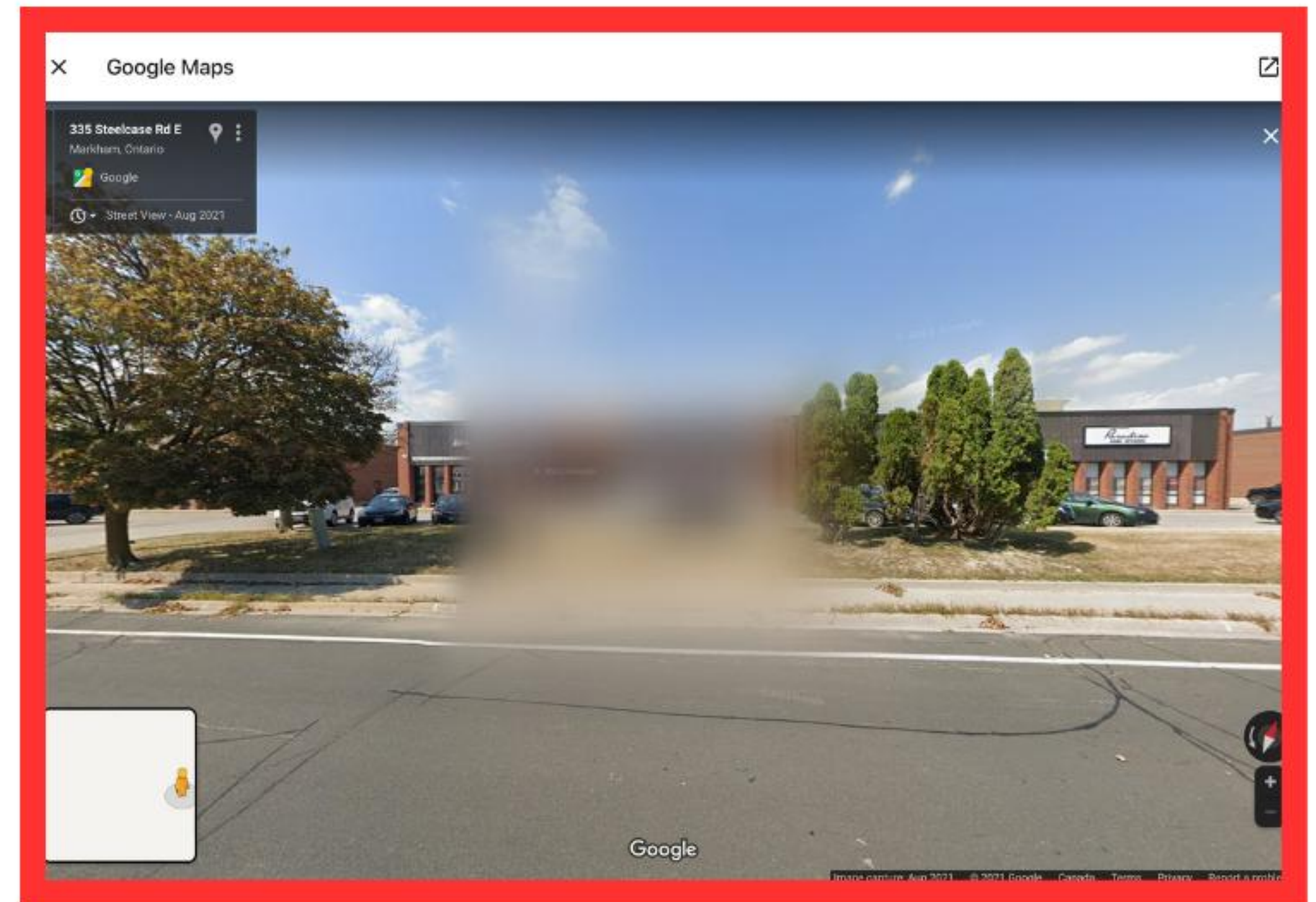


## Don't Let Criminals Case Your Home or Business

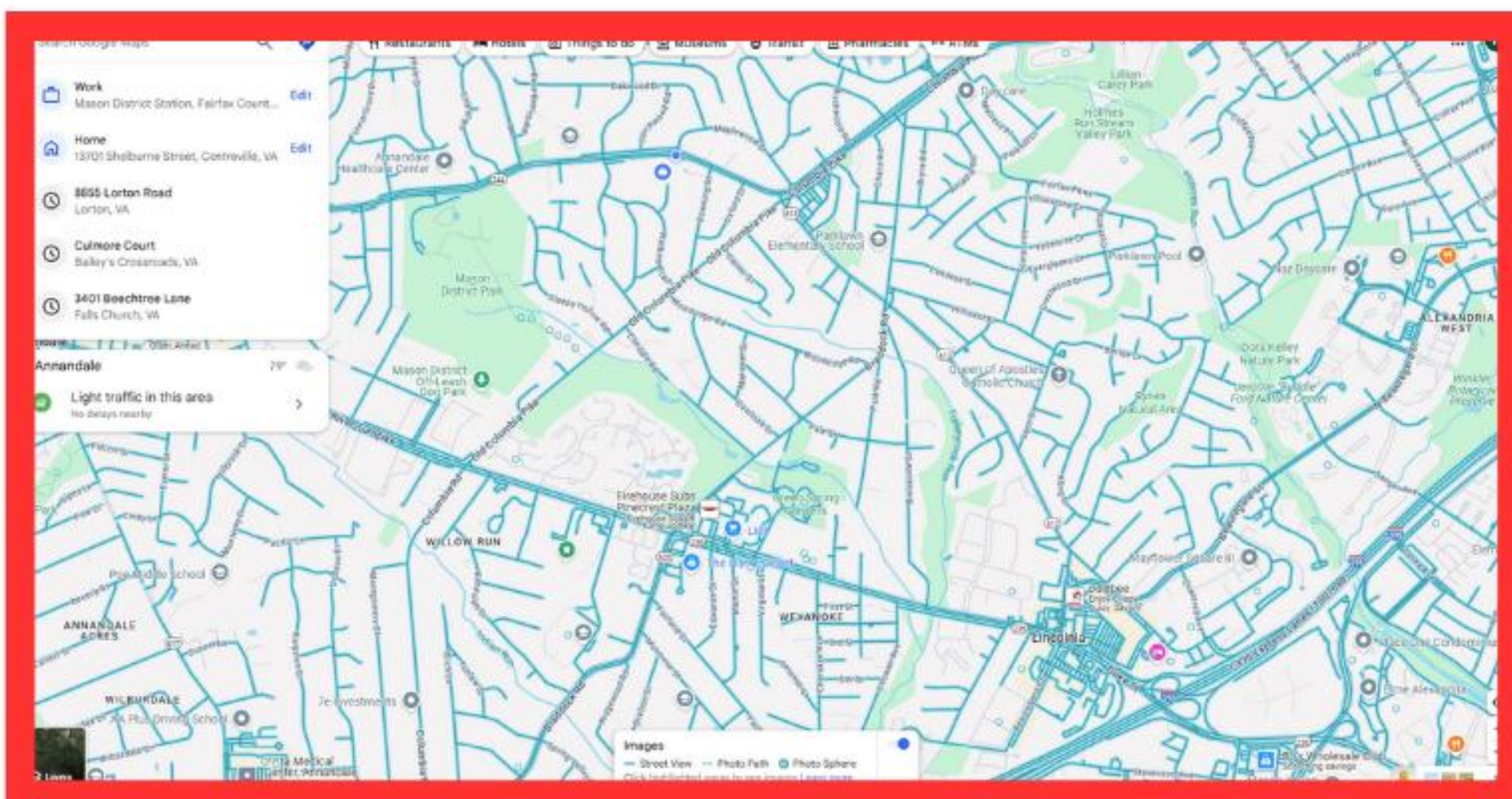
Blurring your location on Google Maps is a smart step toward preventing crime.

### How does blurring your location prevent crime?

- Reduces the chance of criminals scouting entrances, exits, and blind spots
- Hides vulnerable areas like doors, windows, cameras and security systems
- Protects your family's or employees' privacy from public view
- Reduces risk of targeted break-ins based on visible assets or layout
- Adds an extra layer of security without costing a dime

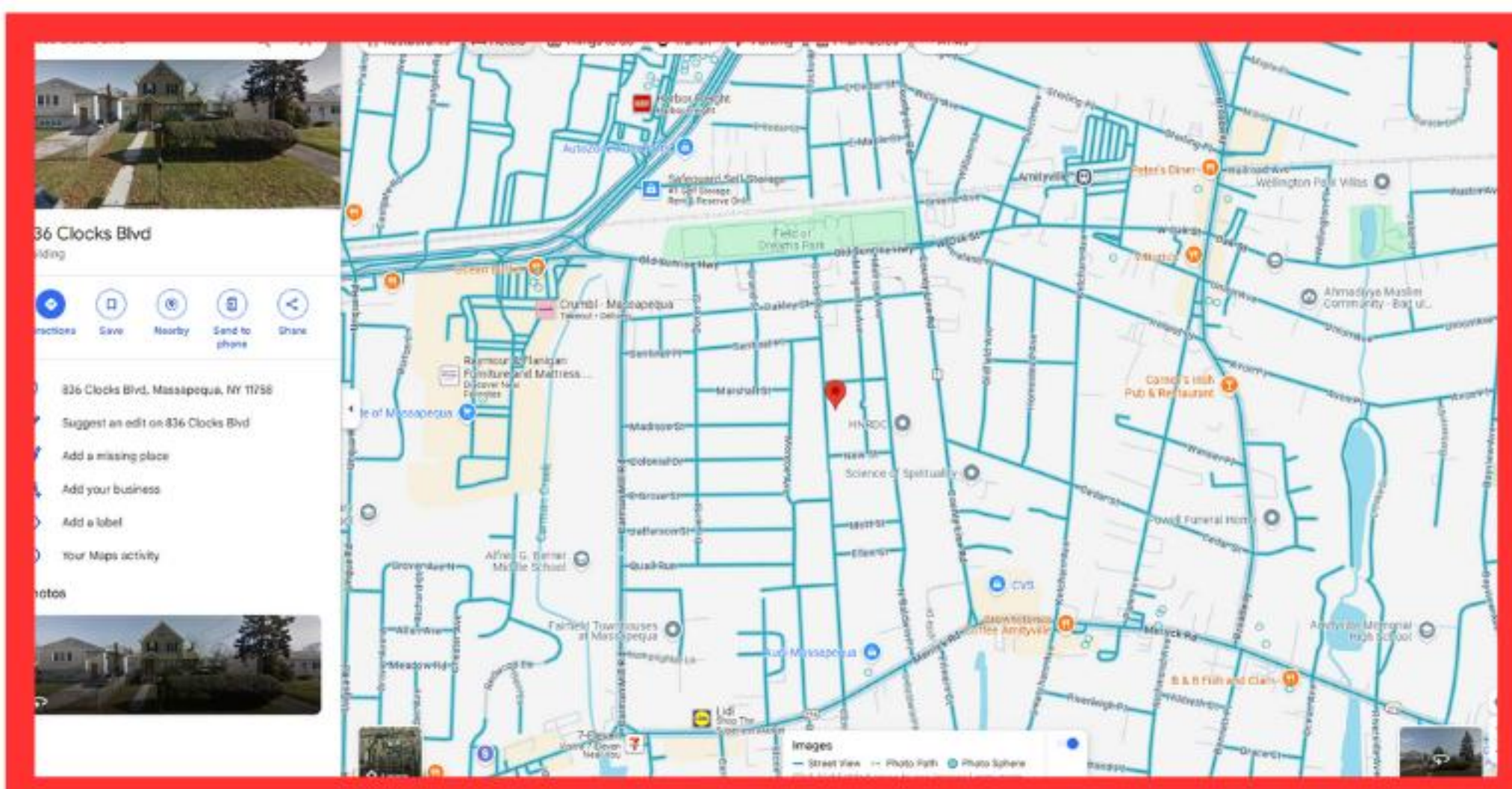


## Protect Your Location in 6 Easy Steps.



### Open Google Maps

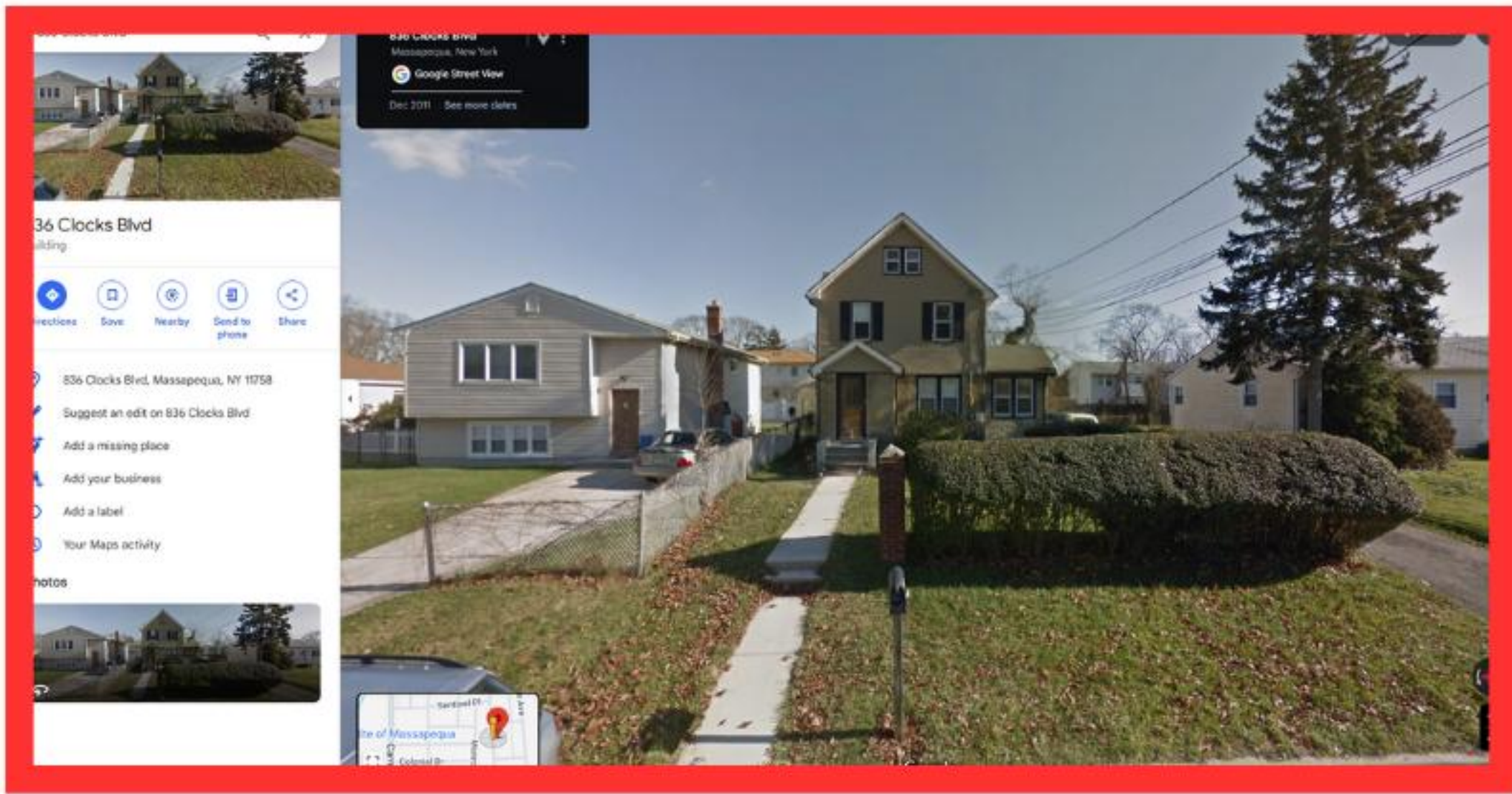
Go to [maps.google.com](https://maps.google.com) and type in your address.



### Enter Street View

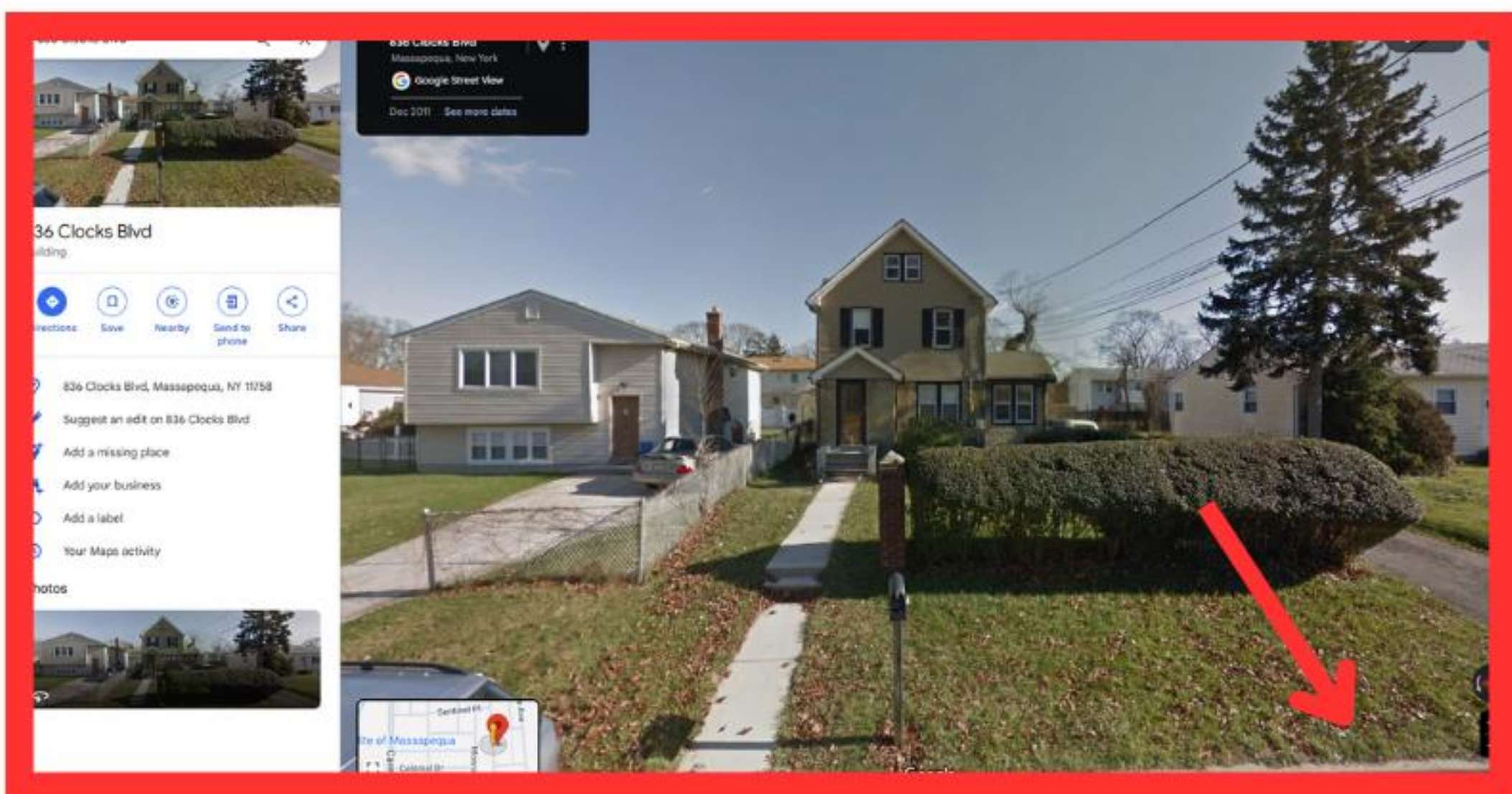
Drag the yellow Pegman (bottom-right corner) to your location on the map





## Find the Right View

Adjust the image to show your home or storefront clearly in the frame.



## Click “Report a Problem”

In the bottom-right corner of the Street View screen, click “Report a problem.”

 This screenshot shows the 'Report Inappropriate Street View' form. The 'Image preview' section shows the same street view image with a red box around the house. The 'Request blurring' section has radio buttons for 'A face', 'My home', 'My vehicle / a license plate', and 'A different object'. The 'Report image quality' section has radio buttons for 'Misplaced image or misaligned navigation arrows' and 'Overall poor image quality'. There is an 'Email address' field and a 'CAPTCHA verification' section with a checkbox for 'I'm not a robot'.

## Request Blurring

Fill out the form. Select what you want blurred (e.g., home, car, face) and explain your request.

 This screenshot shows the 'Report Inappropriate Street View' form with the 'My home' option selected under 'Request blurring'. There is a text area for 'Please include additional information that will help us identify the correct home that should be blurred. Also, note that once we apply blurring to an image it is permanent.' and a 'CAPTCHA verification' section with a checkbox for 'I'm not a robot'.

## Submit the Request

Check the preview image, complete the CAPTCHA, and click “Submit.”