

# Fairfax County Council PTA Reflections Honors 2025-2026

## Outstanding Interpretation (Gold, advanced to VA PTA)

**Dance Choreography** - High School- Zoey Hewton, Edison HS PTSA; Primary- Ditya Dhevarajan, Floris Elementary PTA; Intermediate- Dhritii Dhevarajan, Floris Elementary PTA; Middle- Annabelle Melkonian, Oak Hill ES PTA  
**Film Production** - Primary- Skylar Trimble, Bailey's ES PTA; Intermediate- Kate Detrick, Terra Centre Elementary School PTA; Middle- Sanvitha Kolakalapudi, Rachel Carson MS PTA; High School- Sri Piramanayagam, George C Marshall PTSA; Accessible Arts- Arcinoe Bailey, Edison HS PTSA  
**Literature**- Primary- Lennon Wetzell, Wakefield ES PTA; Intermediate- Parker Yi, Haycock PTA; Middle- Brianna Le, Lake Braddock SS PTSA; High School- Siyoon (Alice) Kim, McLean High School PTSA; Accessible Arts- Nicolas Lapertosa, Hayfield SS PTSA  
**Music** - Primary- Adriana Ziegler, Waples Mill Elementary PTA; Intermediate- Kairav Sabharwal, Haycock ES PTA; Middle- Ruby Mehta, Irving Middle School PTA; High School- Chetana Srinivasan, TJHSST PTSA  
**Photography**- Intermediate – Baiden Vu, Canterbury Woods ES PTA; Primary- Dax Douglass, Hunt Valley ES PTA; Accessible Arts- Connor Huber, Hunt Valley ES PTA; Middle- Ela Patel, Mantua ES PTA; High School- Mikailah Williams, West Springfield HS PTSA  
**Visual Arts**- Middle -Alison Kwon, Joyce Kilmer MS PTA; Accessible Arts- Simon Smith, Joyce Kilmer MS PTA; High School - Chloe Jeong, McLean High School PTSA; Intermediate- Chelsea Yom, Sangster ES PTA; Primary- Yesha Mehta, Waples Mill ES PTA

### Award of Excellence (Silver)

**Dance Choreography**- Grace Williams, Kristen Han, Nishka Arya, Jillian Fiske, Lillian Hu, Kayla Chen, Sahasra Kalyanapu  
**Film Production**- Layla Buckner, Madeleine Jemison, Zoe Livingston  
**Literature**- Jasmine Palomino, Navyasri Shanmuganathan, Adithi Varsha Vikram, Neil Singh, Isha Singh, Rishaan Nityanand, Simran Shah  
**Music Composition**- Philip Chen, Zoya Gillani, Pauline Bong, Charlie Engineer, Marnie Powell, Ellie Goodrich, Zachary Baldwin, Zoya Gillani  
**Photography**- Kathryn Kim, Aradhya\_Bondili, Hari Bala, Charlotte Londa, Morgan Dahl, James Novak,  
**Visual Arts**- Brianna Siles, Avi Levy, Laasya Mohan, Riley Park, Sarah Saravanan, Nia Boettin, Christina Oh, Skylar Trimble, Samantha Meyer, Prisha Polra

### Award of Merit (Bronze)

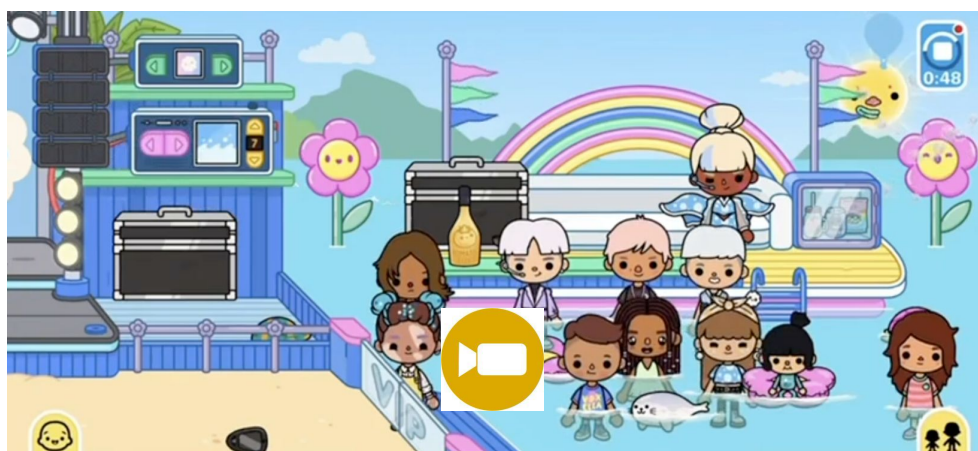
Ridheema Dusange, Sarah Bagade, Priscilla Wang, Niranjana Jayakrishnan, Colette Hecker, Bianca Carey, Riya Sabharwal, Juliet Rosner, Abby Howsare, Hugo Soofi, Kiana Kamran, Emeric Alvarez, Naomi Rosner, Skylar Trimble, Kavin Ajit, Alexandra Lane Kocsis, Grace Tardy, Finn Blayney, Nikita Gaonkar, Julia Drolet, Lukas Covington, Marley Nish, Mia Acevedo, Deepthi Kumar, Abby Howsare, Micah Outley, Jiwoo Kim, Ayesha Risha, Sarah Ahounou, Ben Smith, Aradhya Bondili, Esme Yang, Sian Lee, Olivia Yuan, Gwendolyn Alt, Kendall Shannon

### 2025-2026 Reflections PTAs/PTSAs

Armstrong ES, Bailey's ES, Bush Hill ES, Canterbury Woods ES, Centreville ES, Cherry Run ES, Churchill Road ES, Deer Park ES, Poe MS, Edison HS, Fairfax County SEPTA, Flint Hill ES, Floris ES, Forestville ES, Fort Belvoir ES, George C Marshall HS, Great Falls ES, Haycock ES, Hayfield ES, Hayfield SS, Hollin Meadows ES, Hunt Valley ES, Irving MS, Keene Mill ES, Kilmer MS, Lake Braddock SS, Langley HS, Langston Hughes MS, Laurel Ridge ES, Longfellow MS, Louise Archer ES, Luther Jackson MS, Mantua ES, McLean HS, McNair ES, Oak Hill ES, Oakton ES, Orange Hunt ES, Rachel Carson MS, Sangster ES, Saratoga ES, Shreveewood ES, Stenwood ES, Terra Centre ES, Timber Lane ES, TJHSST, Wakefield Forest ES, Waples Mill ES, West Springfield ES, West Springfield HS, White Oaks ES, Wolftrap ES



Dax Douglas



Skylar Trimble



Simon Smith



Chloe Jeong

### The Shape of Belonging

Written by Brianna Le

you will put on a smile and laugh  
but in the end, it will still feel  
like no one sees your smile  
or hears your laugh.  
you'll wonder where they are:  
this "missing puzzle piece",  
but every single time  
no matter how many times you squish yourself,  
change the shape of your tabs  
tear open your blanks  
the edges and curves just dont  
seem to fit.

and you'll continue this search,  
this endless searching for a way  
to fit your tabs and blanks  
into places where they will never fit,  
until the only one left  
is you.  
and then, the fragile mask you wear—  
the one made of practiced smiles and borrowed laughter—  
shatters beneath the quiet heaviness  
of the question it's held too long:  
"WHY CAN'T I BELONG?"  
but no matter how much you demand an answer,  
you have none.

one day, you will realize that  
somewhere out there,  
someone else also feels like  
a puzzle piece with no match  
someone who you never thought to notice,  
since you were so fixated on this "belonging"

in the end, the shared understanding  
of what it feels like to not belong  
is what brings us together

**A Place For Me**  
(Lyricist) Chetana S  
(Subtitle)

7 I used to stay  
11 up eve - ry night star - ing up at the cei - ling,  
13 lost in my thoughts, quest - ioning the mea - ning of  
15 my whole ex - ist - ence Where in this world do I fit  
17 in? I used to spend  
19 eve - ry day long - ing for a feel - ing of  
21 home and some-where to go where I would - n't feel a

Chetana Srinivasan

Zoey Hewton



Special thanks to:



