



# New Middle School AAP Center Proposal (Annandale Pyramid)

Community Information & Feedback Meetings  
October 22 & October 28, 2025

# Introductions

Ricardy Anderson, Ed.D.

School Board Member, Mason District

Michelle Boyd, Ed.D.

Assistant Superintendent, Region 6

Sarah Eqab, Ph.D.

Principal, Poe Middle School

Shawn English

Advanced Academic Resource Teacher, Poe Middle School

Sloan Presidio, Ed.D., J.D.

Chief Academic Officer

Michael Gillespie, Ed.D.

Director, Cross-Curricular Curriculum & Instruction

Kirsten Maloney, Ed.D.

Senior Manager, K-12 Advanced Academic Programs

Paul Ngo

Senior Manager, Facilities Services Planning

# Agenda



- Background on Full-Time AAP
- Rationale for proposal for new Full-Time AAP Center at Poe Middle
- Proposed Boundary Adjustments
- Phasing Information
- Information about Poe Middle School
- Timeline & Next Steps
- Q&A
- Documenting Feedback in Small Groups

# What is Full-Time AAP and how does it fit in the bigger picture of Advanced Academics in FCPS?

**FCPS has a K-12 continuum of services to meet students' advanced academic needs**

**At middle school, the services are:**

- Open-enrollment Honors courses
- the Full-Time Advanced Academic Program

**Full-Time AAP:**

- Uses extended standards (goes beyond the grade level standards)
- Uses curriculum that is designed to meet the needs of advanced learners
  - increased depth/complexity
  - increased independence (with support as needed)
  - adjusted pace of instruction
- Cohorts students who are eligible for FT AAP together in class

**In high school, all advanced academic courses (Honors, AP, IB, Dual Enrollment) are open enrollment.**

# Proposal for a New Full-Time AAP Middle School Center at Poe Middle School starting in SY 2026-27

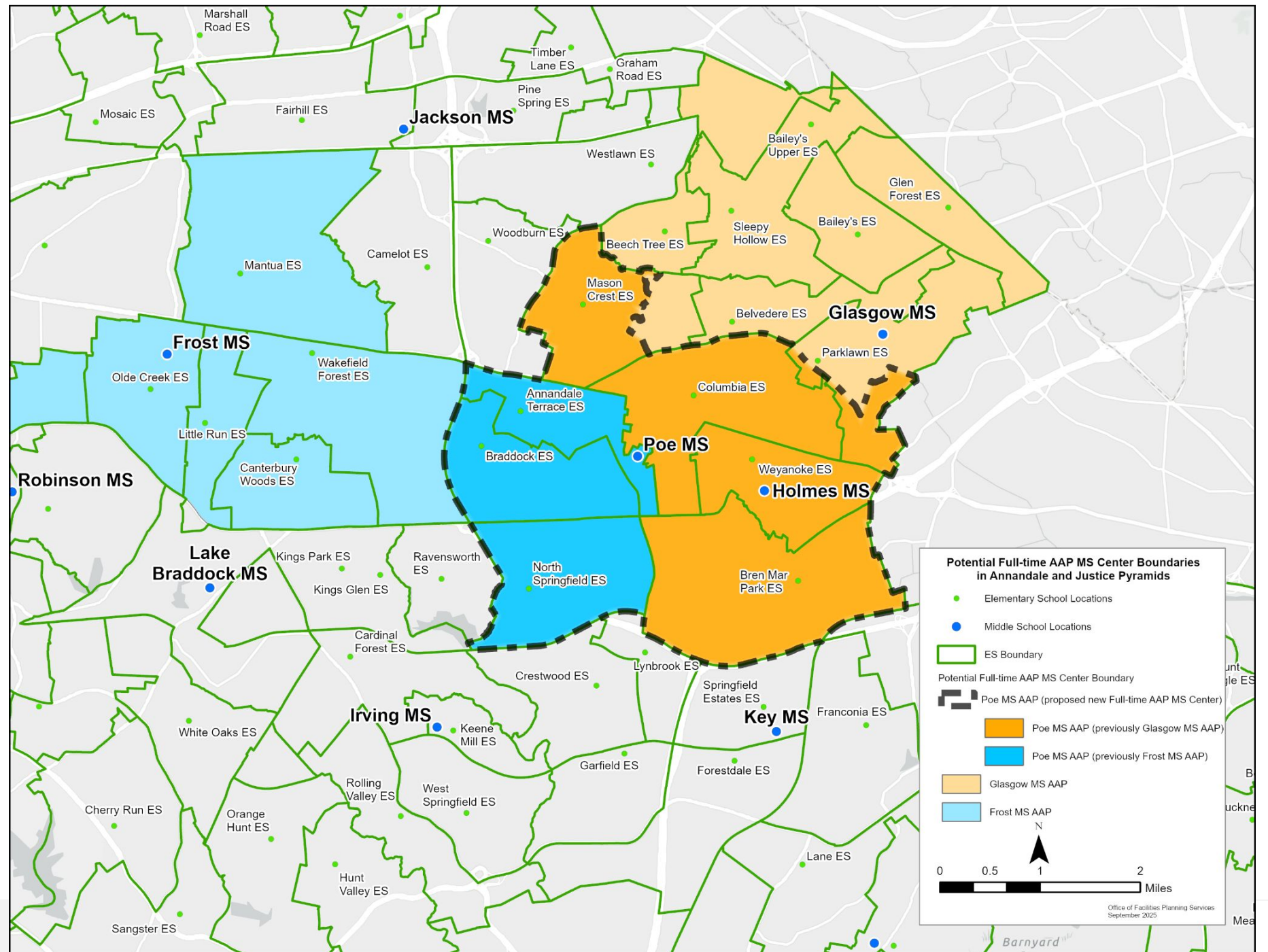
## Rationale:

- Ensure each Region in FCPS has a middle school AAP center. Region 6 is currently the only FCPS Region that does not have a middle school AAP center.
- Provide continuous Full-Time AAP services to students who attend the K-5 Local Full-time program at Annandale Terrace ES, Braddock ES, and North Springfield ES

Currently, these students must transition for one year to Canterbury Woods ES for grade 6 and then transition to Frost MS if they wish to attend a middle school AAP Center

**\*Poe Middle is currently proposed because of its central location to feeder schools**

# Map of Proposed Boundary Change



# Feeder Elementary Schools Included in the Proposed Poe Middle School AAP Center

Feeder Elementary School <i>School is zoned for Annandale HS unless noted</i>	Current Assignment for Full-Time AAP Middle School Center	Proposed Assignment for Full-Time AAP Middle School Center
Annandale Terrace	Frost	Poe
Braddock	Frost	Poe
North Springfield	Frost	Poe
Bren Mar Park	Glasgow	Poe
Columbia	Glasgow	Poe
Weyanoke	Glasgow	Poe
Mason Crest*	Glasgow	Poe primarily <i>Small segment continue to go to Glasgow if a student's address is zoned for Justice HS</i>
Parklawn**	Glasgow	Glasgow primarily <i>Small segment will be assigned to Poe if a student's address is zoned for Annandale HS</i>

\* Mason Crest is zoned primarily for Falls Church HS with a segment zoned for Justice HS

\*\* Parklawn is zoned primarily for Justice HS with a segment zoned for Annandale HS

# Grade Level Specific Numbers by Attending School

The numbers below represent Full-Time AAP eligible students attending the noted school in SY2024-25 to provide an estimate of the three-year phase in to full implementation at an AAP center at Poe MS

	Grade 6	Grade 7	Grade 8	Total
<b>Holmes MS</b>	29	20	14	<b>63</b>
<b>Glasgow MS</b>	41	42	36	<b>119</b>
<b>Frost MS</b>	0	33	29	<b>62</b>
<b>Canterbury Woods MS</b>	24	0	0	<b>24</b>
<b>Other</b>	0	5	0	<b>5</b>
<b>Total</b>	<b>94</b>	<b>100</b>	<b>79</b>	<b>273</b>

# Proposed Implementation Phasing

Students in grades 6-8 at Glasgow MS and Frost MS for the 2025-26 SY will continue services through completion of middle school at those sites per [Policy 8130](#)

Policy 8130 Phasing of Adjustments: “Middle Schools: When a boundary adjustment occurs at the middle school level, attendance in the new school boundary shall be mandatory for incoming 6th grade students in schools with a 6-8 grade configuration and for incoming 7th grade students in schools with a 7-8 grade level configuration. Currently enrolled students shall be given the option to remain at the school or attend the school in the new boundary.”

2026-27 School Year	2027-28 School Year	2028-29 School Year
<p>Poe implements grade 6 of Full-Time AAP</p> <p>Rising grade 6 Full-Time AAP eligible students within the new boundary will attend Poe Middle School for services.</p>	<p>Poe implements grades 6&amp;7 of Full-Time AAP</p> <p>Rising grade 6&amp;7 Full-Time AAP eligible students within the new boundary will attend Poe Middle School for services.</p>	<p>The new Full-Time AAP Center at Poe is at full implementation for grades 6-8.</p> <p>Rising grade 6-8 Full-Time AAP eligible students within the new boundary will attend Poe Middle School for services.</p>



# Poe Middle School



Dr. Sarah Eqab  
Principal Poe Middle School



# Admin Team



Brig Carrie  
Director of  
Student Services



Latriece Pettie  
Assistant  
Principal



LaTonya Floyd  
Assistant  
Principal



Tyler Miller  
Assistant  
Principal



# Our Priorities



- Meaningful relationships & support
- Strong collaboration & collective ownership
- High quality instruction



# Mindset Commitments

- All kids can learn
- Collective ownership
- Culture of problem solving
- Embrace data
- Presume positive intent
- Conversation is the relationship

We believe in every student.



# Meaningful Relationships & Support

## At Poe Meaningful Relationships & Support Mean...



- We prioritize safety and learning
- We value long-term engagement
- We communicate care and belonging
- We model social and emotional skills



# Strong Collaboration & Collective Ownership

At Poe, collaboration and collective ownership means...



- Recognizing we can't do it alone
- Making our thinking visible to each other
- Inviting different perspectives
- Change our approach, based on input
- **Our** kids are **our** kids

# High Quality Instruction

- Students spend the majority of class time meaningfully reading, writing, discussing, thinking. **Not copying, watching or listening.**
- Students know **what they are doing, why they are doing it and how they'll know when they've got it.** When asked, they can tell us.
- Each lesson teaches **a skill.** Not just content.
- Direct instruction is dedicated to modeling a skill, not delivering content. **We show students how to learn, not just tell them what to know.**





# Our School Community



# PTSA

## Poe Middle School Executive Board



Alexis Martina  
President



Diana Egas Vides  
Treasurer



Tia Kminek  
Secretary

# Poe Middle School Clubs

AALEAD

Art

Basketball

Bracelet Making

Capital One Coders

Crafty Cooks

Cross Country

Dungeons & Dragons

EIP

Math Olympiad

NJHS

Flag Football

Game Room

Handball

Homework Hotspot

Kpop

Legos

Makerspace

Marine Science Event

Open Gym

Pickleball/Tennis

Poe Minds Matter

Raven Theatre

Running

Science Olympiad

Sewing

SGA

Soccer

Swole Squad  
(weightlifting)

Teacher Help

Volleyball

# Poe & Proposal for Full-Time AAP -- Next Steps

- **September 25, 2025:** School Board vote to engage the community to explore a new Full-Time AAP middle school center at Poe Middle School
- **October 2025:** Community engagement meetings for all impacted school communities. Gather community feedback.
- **November 13, 2025:** School Board New Business
- **December 1, 2025:** School Board hearing for community members who want to sign up to speak (6-7 p.m. - a sign up will be on SB website 10 days prior)
- **December 18, 2025:** School Board vote to open a new center in 2026-27 SY
- **January - June 2026:** If the School Board votes to begin grade 6 in the 2026-27 school year, school preparation (staffing implications and preparation & instructional preparation) will take place from January through June 2026 according to the timeline posted on Board Docs

# Small Group Discussion & Feedback

- What excites you about the proposal to open a new Full-Time AAP center at Poe Middle School?
- What suggestions do you have?
  - For Dr. Reid and School Board members
  - For the AAP office
  - For the leadership team at Poe Middle School
- Were there any other comments that your small group would like to share?

## In person:

- Capture your notes on the chart paper provided

## Online:

- Your breakout room number is your group number.
- Record your feedback on the [linked document](#) as your group discusses.



*Thank You!*