



Classroom on Wheels

Academic Matters - May 2025



**EXCELLENCE
EQUITY &
OPPORTUNITY**

2023-30 STRATEGIC PLAN

Pillar B

Vibrant Home, School, & Community Partnerships

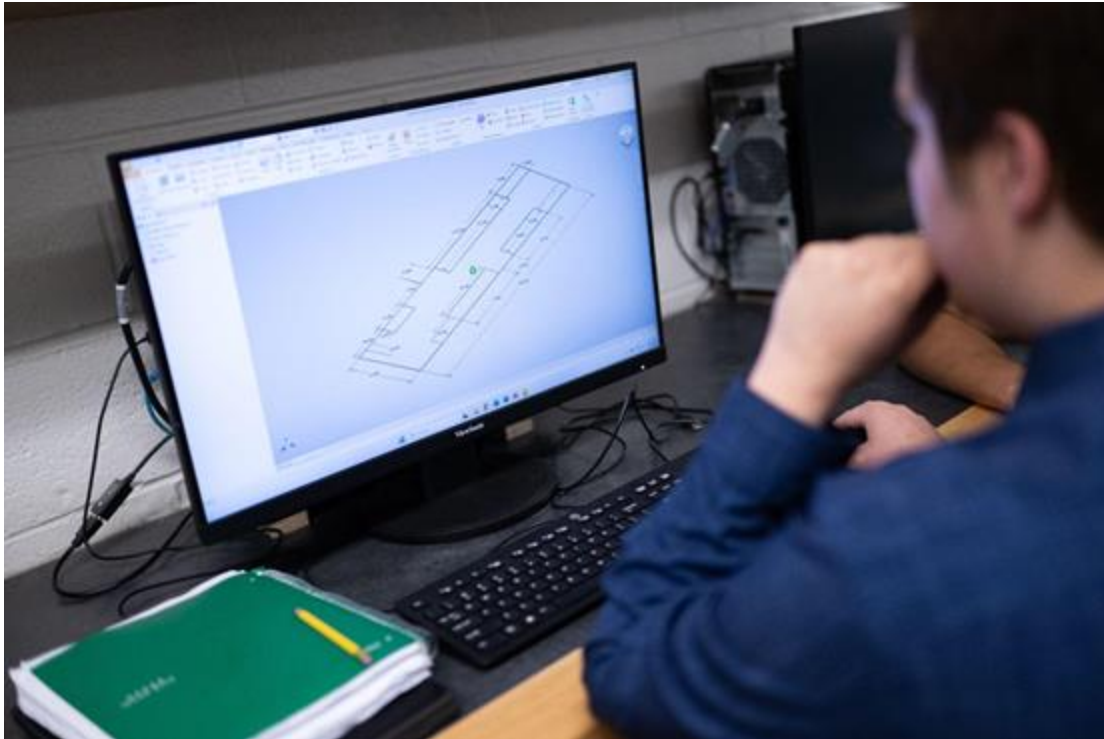
We share responsibility to build trusting partnerships that sustain a safe, inclusive culture for learning and work, and we collaborate proactively with respect, honesty, and transparency.

Classroom on Wheels

- Provide extra academic help where students live
- Strengthen connections between families and schools

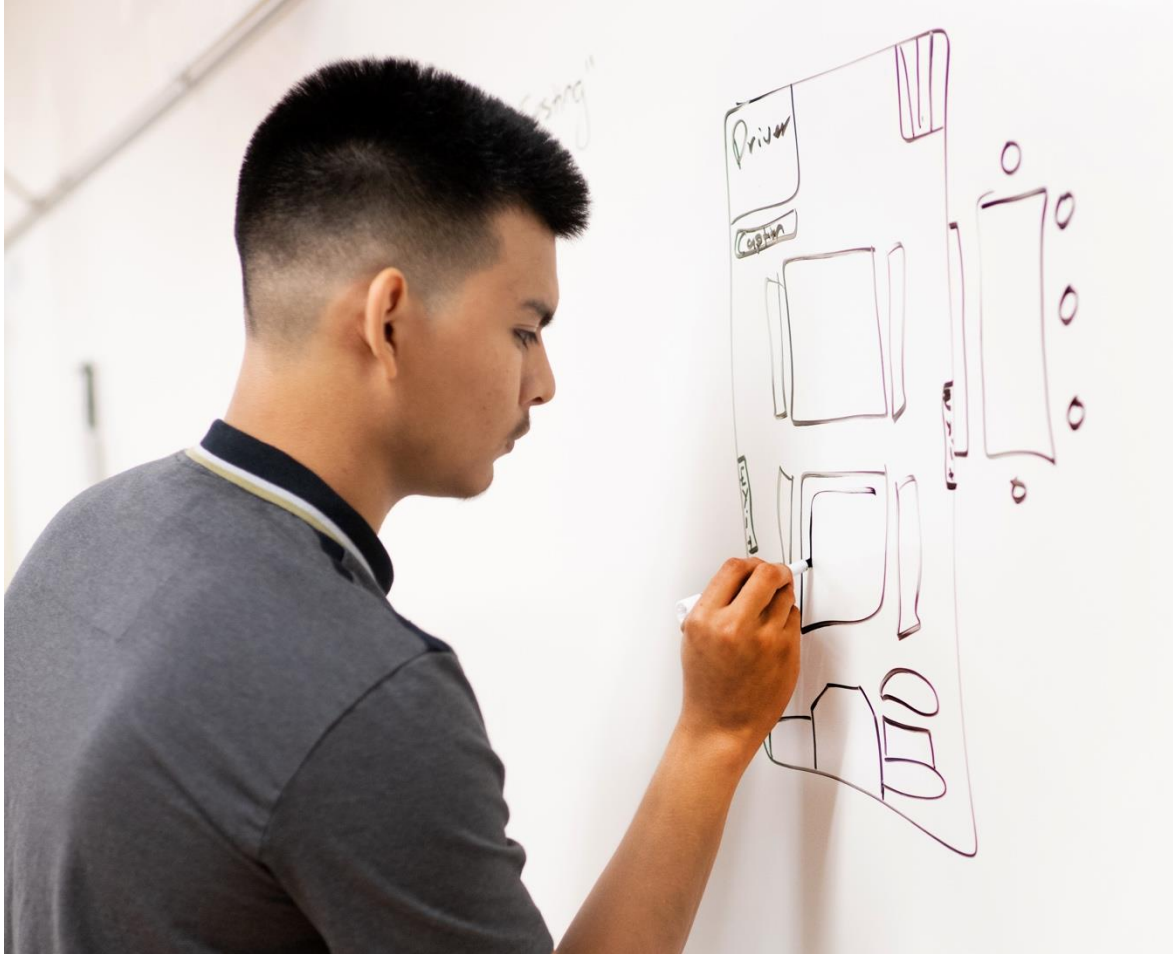


Phase 1 – Bus Transformation





What's Next?



- Summer pilot program (Phase 2)
- Targeted student outreach
- Strategic community deployment