

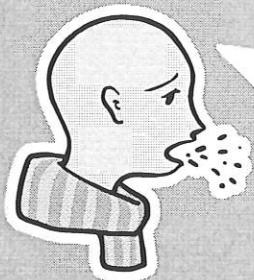
GRAND OPENING

INOVA CARES CLINIC FOR CHILDREN

WALK IN SICK CLINIC

OPENS JANUARY 8, 2024!

Inova Cares Clinic for Children will be opening a sick clinic on the lobby level of 6400 Arlington Blvd., Falls Church, VA. It is near the medical lobby entrance. We will see patients starting at 0830 Monday through Friday.

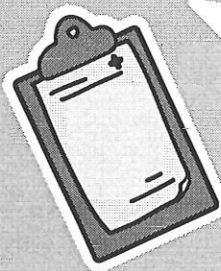
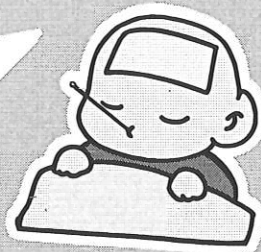


WALK IN CLINIC:

This is a walk in clinic. Patients are seen on a first-come, first-served basis. There are limited appointments based on the number of providers on a given day.

FIRST COME, FIRST SERVED:

When you come to the walk-in clinic, if all appointments for the day have filled up, then you may be directed to an urgent care or the emergency department. In some instances, you may be able to return on the next business day.



THE WALK IN CLINIC IS FOR PATIENTS WHO ARE REGISTERED AS INOVA CARES PATIENTS ONLY!

If you already have a Primary Care Provider, you should seek care with them. If you are not registered with Inova Cares, you will need to register on the first floor prior to being able to be seen.

ONLY CERTAIN MEDICAL CONDITIONS CAN BE TREATED IN THE WALK IN SICK CLINIC. SEE REVERSE SIDE FOR DETAILS.



DON'T MEET CRITERIA?

Patients who do not meet medical criteria to be seen in the walk in sick clinic may be directed to an urgent care or the emergency department.

WHERE SHOULD I TAKE MY CHILD?

SAME DAY SICK APPOINTMENT AT INOVA CARES CLINIC FOR CHILDREN



- cough or sore throat
- congestion, sinus pain, runny nose
- ear infection symptoms (drainage from ear, ear ache, pulling on ear)
- pink eye (red, inflamed eye with or without drainage)
- sprained ankle or wrist
- vomiting or diarrhea or mild dehydration
- minor accident or fall
- minor wound or injury
- mild breathing difficulty
- fever in children over 1 month old
- flu-like symptoms
- mild to moderate back pain/problems
- skin rash/infection
- urinary tract infection symptoms

**SAME DAY SICK CLINIC AT INOVA CARES CLINIC FOR CHILDREN
6400 ARLINGTON BLVD., LOBBY LEVEL, FALLS CHURCH, VA**

- WALK INS WELCOME!
- MONDAY- FRIDAY: OPENS AT 0830

EMERGENCY ROOM



- difficulty breathing, fast breathing, gasping for air
- fever of 100.4 degrees F in a child under 1 month old
- cuts or abrasions that might require stitches
- if child is making a "whooping" sound when breathing in after coughing
- severe allergic reaction (anaphylaxis)
- suspected poisoning
- serious injuries after a car accident
- seizures
- serious head trauma
- vomiting blood
- broken bone- especially if the bone is poking through the skin
- deep cut that does not stop bleeding after 15 minutes of pressure
- deep cut on face
- fainting
- inability to speak, walk, or move
- rapid heartbeat that doesn't slow down
- serious burn
- severe dehydration- especially in newborns
- stiff neck with headache or fever
- suspected physical or sexual abuse
- change in mental state, such as confusion or sleepiness