

The background is a solid teal color. It is decorated with several hanging light bulbs of various shapes and sizes, some of which are illuminated with a soft glow. There are also small white and yellow starburst or spark-like graphics scattered throughout the scene. The text is centered in the lower half of the image.

# FROST MIDDLE SCHOOL BACK TO SCHOOL NIGHT



# FROST ADMINISTRATION







# Meet our Frost Administration Team





## \* BACK TO SCHOOL NIGHT PURPOSE AND GOALS

Welcome families to the school community and foster a school-family partnership for the 2021-2022 SY.

Provide timely information about the pertinent school information such as Schoology, Grading, the After school program, school policies and procedures, and family resources and support to help your child be successful this school year.

Learn more about your child's classroom teachers and classes asynchronously.





# FROST MS VISION STATEMENT

“Frost Middle School is a community where students and staff know they matter while learning and growing together. We are ONE Frost.”





# FROST MS MISSION STATEMENT

“We create meaningful relationships to foster a caring and inclusive culture. We engage in experiences to inspire curiosity and confidence. We develop problem-solving skills to thrive in a diverse and ever-changing world”.





# FROST MS BTSN WEBSITE





FROST MS PTA





# JOIN THE FROST MS PTA!



## Forms & Payments

[View all](#)

### Join the Frost Middle School PTA 2021-2022

Will close at 6/10/2022 3:00pm

[View →](#)

Funds from PTA Memberships and donations are used in support of the Frost PTA's initiatives, the Grant Program is by far our largest expenditure. Your dollars will go directly to programs that enrich...

- Membership for Parent/Guardian	\$20.00
- Membership for Teacher	\$10.00

[ABOUT US](#)[COMMUNICATION](#)[PROGRAMS & INFORMATION](#)

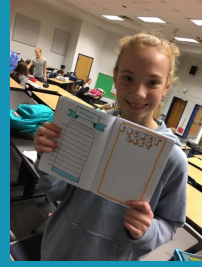
## Welcome to the Frost Middle School PTA Website



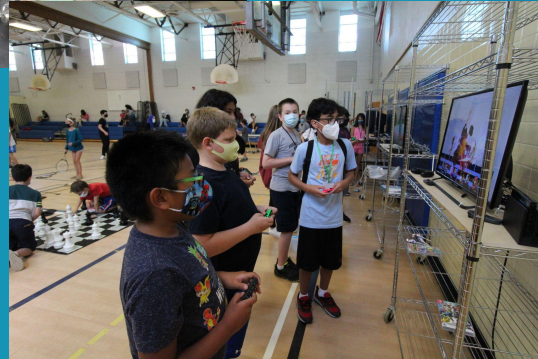
The Frost MS PTA is an active community of parents who provide support to Frost MS in many ways, including: a robust grants program; providing volunteers to help run book fairs, bingo and magazine drives; teacher appreciation and hospitality; and many others. Our support of this award-winning middle school is a key component to its success.

[Become a Member](#)[Business Sponsors](#)





# FROST MS AFTER SCHOOL PROGRAM





# AFTER SCHOOL PROGRAM BEGINS SEPTEMBER 27TH

- ✦ Program Times: 2:30pm - 4:30pm
- ✦ Late Buses- 3 days a week: Monday, Wednesday & Thursday
- ✦ Parent pick up- 2 days a week: Tuesday & Friday
- ✦ Our goal is to provide a safe and fun environment for Frost Students during after-school hours in the areas of recreation, academic enrichment, social interaction, and a wide range of clubs and activities.
- ✦ Students choose specific clubs of interest and attend on those meeting days.

After school information is posted on the school website, in Schoology, and in every classroom.

Parents must register their student to participate in the After School Program using this link <https://forms.gle/WVP9BxHLFEYFkw2w7>

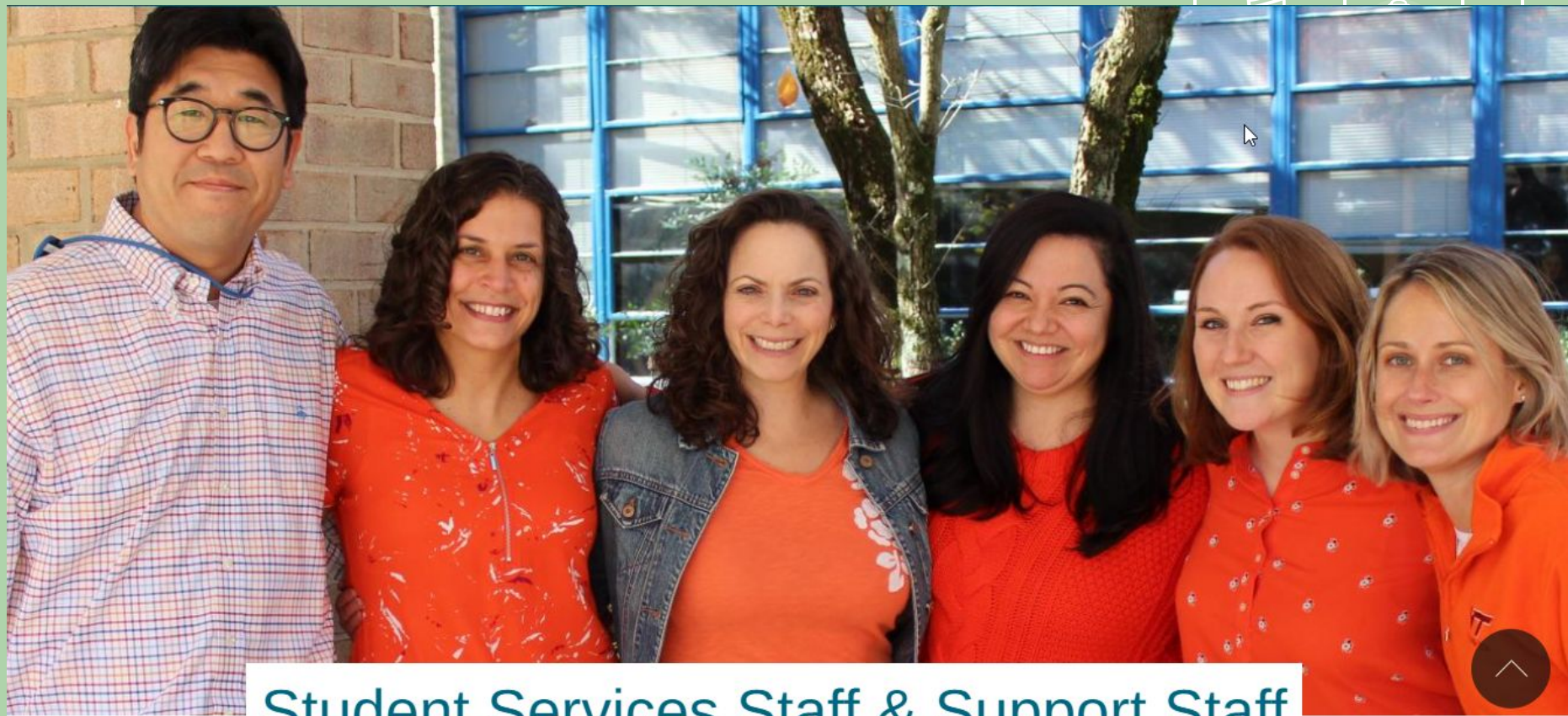




# STUDENT SERVICES







Student Services Staff & Support Staff



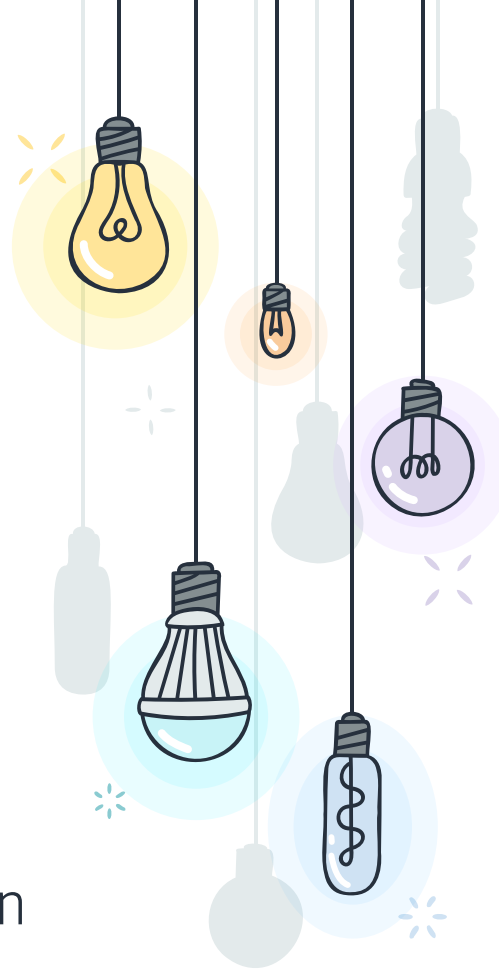
# CONTACTING TEACHERS





# THERE ARE SEVERAL WAYS TO GET IN TOUCH WITH TEACHERS.

- ✦ From the [Frost website](#) go to **About - Staff Directory**, and click on the **Contact** link for that teacher.
- ✦ From [ParentVue](#), choose a student, click **Class Schedule**, or **Grade Book**, and click a teacher's name to send them an email.
- ✦ Teachers should generally respond to emails within two business days.





GRADING







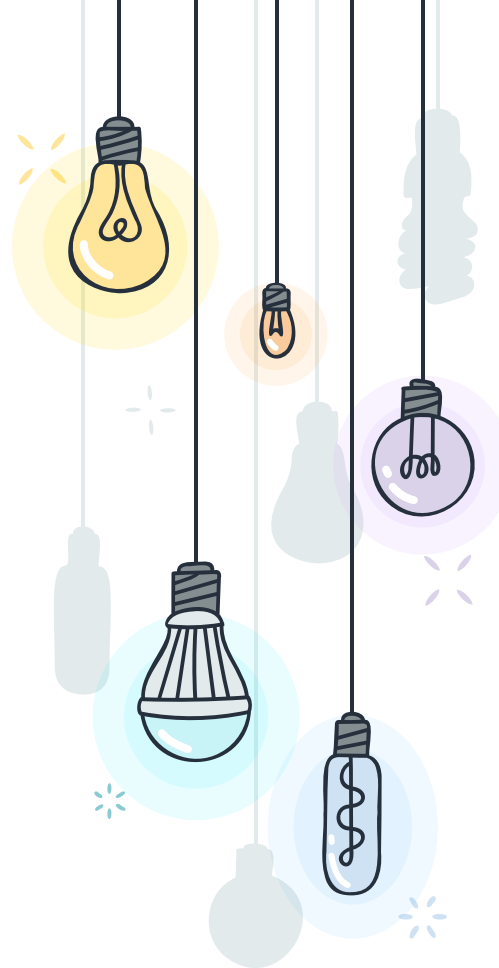
## ROLLING GRADEBOOK

All Frost staff will be using a Rolling (cumulative) Gradebook. Final grades are determined by a combination of all assignments and assessments over the course of the entire school year. It is not an average of quarter marks. The grade posted at the end of each traditional quarter is a snapshot of a student's current progress in the course. Video regarding the Rolling Gradebook can be found [here](#).



# GRADING

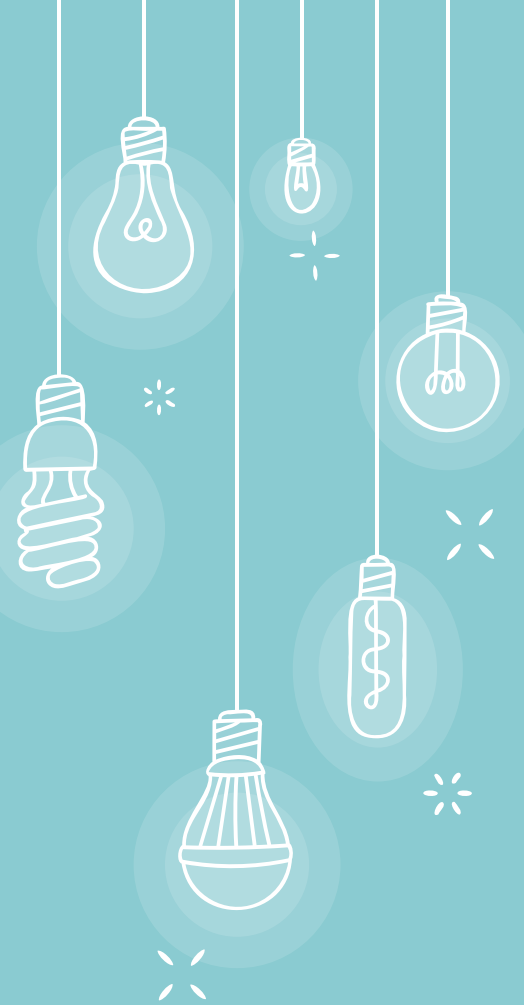
- Please remember that while assignments and grades may appear in both Schoology and SIS; SIS is the gradebook of record.
- See individual class syllabus for specific weighting of assignments, late work, make-up work, and retake policies.
- Teachers will continue to update the gradebook, generally within 7 school days, of an assignment due date.
- Grades can be viewed by students and parents on an ongoing basis with a SIS account accessible [here](#) beginning 9/7.





# GRADING

- Parents will receive weekly snapshot grades that are pushed out by the county beginning in mid-September.
- Teachers will also be emailing detailed progress reports throughout the school year (every 4.5 weeks)
- At the end of the quarter, progress reports will be emailed and a snapshot of the child's grade in each class will be posted on the Report Card tab in SIS.
- Report cards will not be provided, unless requested, as the grade is not a final grade for the quarter due to use of the rolling gradebook.

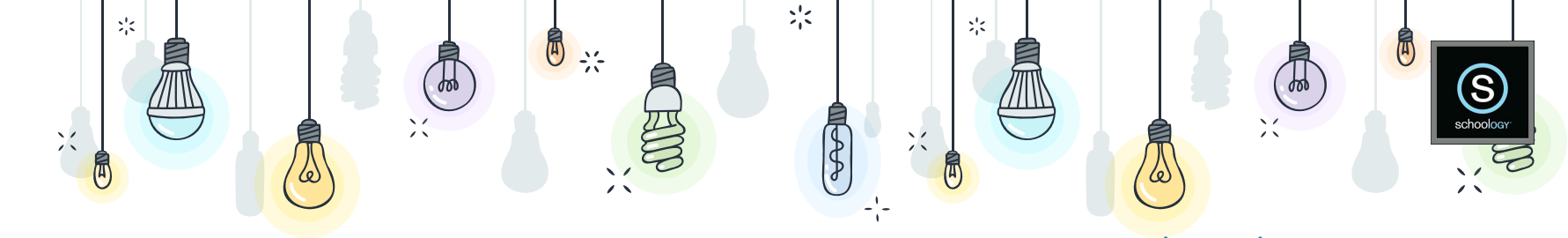




# SCHOOLGY INFO

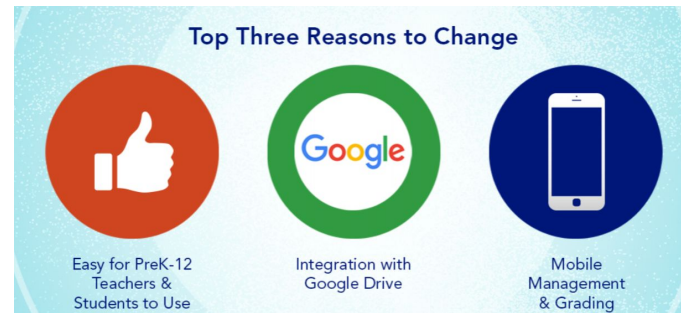






## SCHOOLLOGY: OUR NEW LEARNING MANAGEMENT SYSTEM (LMS)

- ✦ Schoology is replacing FCPS 24/7. All teachers will be using this program.
- ✦ Parents must have a SIS parentvue account to access their Schoology account.
- ✗ Information regarding getting a SIS Parentvue account can be found on our home page on our website and has been sent out via e-mail.





# SCHOOLGY: OUR NEW LEARNING MANAGEMENT SYSTEM



- + Parents have a separate logon. You will be able to see updates, important dates, access is on our Frost Page.
- + Some information (assignments/Google related images) will not be able to be seen through parent account.
- + Log in as student to see everything. SIS is the gradebook of record until Schoology and SIS “talk”.
- + See our website for additional information regarding Schoology accounts.







Teachers, Staff and Students, use your FCPS credentials to login

Sign in

Reminder: Parents use their [Student Information System \(SIS\) Parent account](#) to log into Schoology.  
**For Schoology help**, click [here](#)

## LOGGING IN TO SCHOLOGY:

Go to: [lms.fcps.edu](https://lms.fcps.edu)

Login using the same account  
information that you use for  
ParentVue





# SCHOOLGY- FROST ALL PARENTS COURSE





ATTENDANCE





## \* STUDENT ATTENDANCE

If your child is sick or will be absent for any reason, please let us know as soon as possible by reporting an absence. Form submissions are monitored throughout the day by our office staff and your child's attendance will be updated in SIS for our teachers. You can find the form at the bottom of our [Frost MS Webpage](#). You can also report an absence directly online.

**Absence/Tardy Phone Line:** 703-426-5702

**Absence/Tardy Email:** [FrostMiddle.Attendance@fcps.edu](mailto:FrostMiddle.Attendance@fcps.edu)





# SCHOOL COMMUNICATION





## \* SCHOOL COMMUNICATION

- + Frost MS Weekly This Week at Frost Updates (News You Choose email)- Friday
- + School Website: <https://frostms.fcps.edu>
- + School Office Hours: 7:00 Am- 3:30 PM (703) 426-5700
- + Follow Us on Twitter @FrostMSVA @FrostMSVAPTA @FrostsPrincipal
- + Email, texts through eNotify

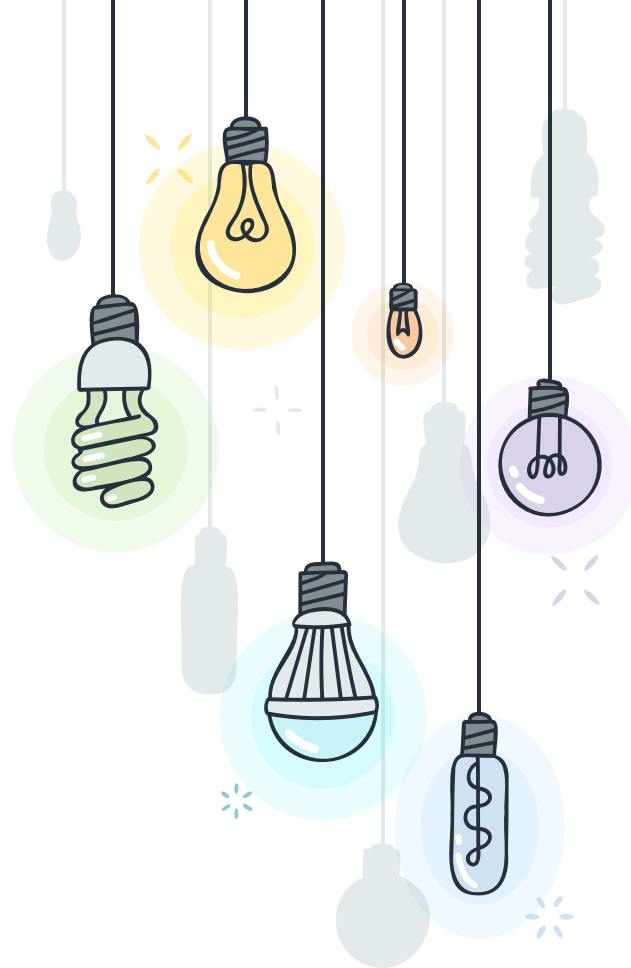




## REQUIRED FORMS

- Emergency Care Form – Parents may complete the Emergency Care Form and print it or may update the form through WeCare. If the form is updated through WeCare, you do not need to print a copy. WeCare can be found at this link: <https://www.fcps.edu/node/30943>.
- Health Information Form: You must complete and print a copy of the Health Information Form and bring it into school.
- After-School Program Registration – All families must register for the After-School Program, whether they intend to use it or not. You may register online at the link, above, or fill out a paper copy at Frost.
- Parent Consent for Instructional Digital Resources – The form is online as well and can be found at the link, above. Or you can fill out a paper copy at Frost.

All forms will be available to fill out at Frost if you are unable to complete them online.





# FALCON FOCUS





# BELL SCHEDULE

Blue (A)	Time	Gray (B)	Minutes
1	7:30am-8:58am	2	88
3	9:05am-10:33am	4 (FF)	88
5	10:40am-12:40pm	6	120 (90/30)
7	12:47pm-2:15pm	8	88

## Lunch Schedule

### A Lunch

Lunch: 10:40am-11:10am (30)

Class: 11:10am-12:40pm (90)

### B Lunch

Class: 10:40am-11:10am (30)

Lunch: 11:10am-11:40am (30)

Class: 11:40am-12:40pm (60)

### C Lunch

Class: 10:40am-11:40am (60)

Lunch: 11:40am-12:10pm (30)

Class: 12:10pm-12:40pm (30)

### D Lunch

Class: 10:40am-12:10pm (90)

Lunch: 12:10pm-12:40pm (30)



# FALCON FOCUS SCHEDULE

7th Grade Schedule	7th Falcon Focus Times	8th Falcon Focus Times	8th Grade Schedule
News	9:05-9:10 (5)	9:05-9:10 (5)	News
Brain Break	9:10-9:25 (15)	9:10-9:35 (25)	Advisory/Lesson
Advisory/Lesson	9:25-9:50 (25)	9:35-9:50 (15)	Brain Break
Intervention & Office Hours	9:50-10:33 (38)	9:50-10:33 (38)	Intervention & Office Hours





7th Grade: 9:25-9:50

8th Grade: 9:10-9:35

Primary Objectives:

Support students in building positive, meaningful relationships with one or more caring adults at school

Help students develop positive relationships with their peers

Provide a safe place for students to strengthen their academic and social-emotional competencies, explore their interests more deeply, and nurture the development of new skills and talents



# SEL LESSONS & ADVISORY DURING FALCON FOCUS

## School-wide lessons

- SEL
- Digital Citizenship
- Academic & Career Planning (Naviance)

\*\*Occur the first FF class of each week

## Advisory

- Arrival/Welcome
- Announcements
- Acknowledgements
- Activity

\*\*Occur the remaining FF classes for the week





## BRAIN BREAKS

**All middle schools (Grades 6, 7 & 8) and Secondary Schools (Grades 7 & 8) will implement a regularly scheduled student break throughout the instructional week.**

Break time will occur a minimum of every other school day for at least 15 minutes and may be scheduled around lunch, during the Advisory block at Frost MS. Access to outdoor activities will be included in all formats, weather-permitting





# RENOVATION AT FROST





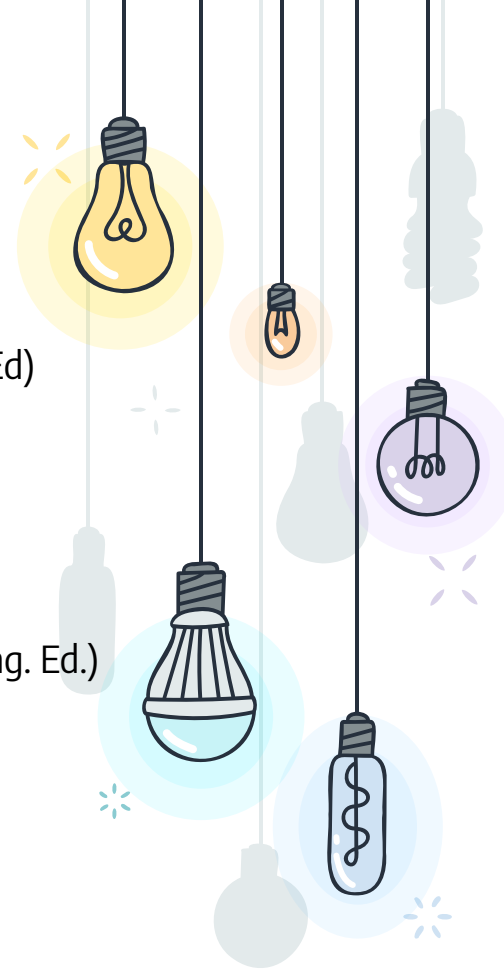
# PROJECT SCOPE- \$40 MILLION PROJECT

## Addition (+/- 85,000 square feet)

- Secure main entrance (Bus drop-off)
- Secondary entrance (Car drop-off)
- Administration and Health Suite
- Comprehensive Services Suite
- Cafeteria extension
- 2 story classroom wing (Core classrooms & Science labs, Special Ed)
- Library
- Music/Instrumental rooms
- Gym storage

## Renovation (+/- 121,000 square feet)

- Existing Classrooms (Art, Family & Consumer Sciences, Tech & Eng. Ed.)
- Student Services Suite
- Special Ed offices and classrooms
- Cafeteria/Stage, Kitchen
- Main and Aux Gyms
- Lecture Hall (relocated and enlarged)
- Roof
- Mechanical, Electrical, Plumbing, AV/IT





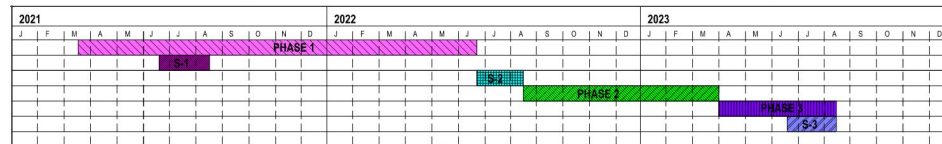
## PROJECT TIMELINE

- Project Award April 8, 2021
- Construction Started Late April 2021
- Completion of Project Fall 2023



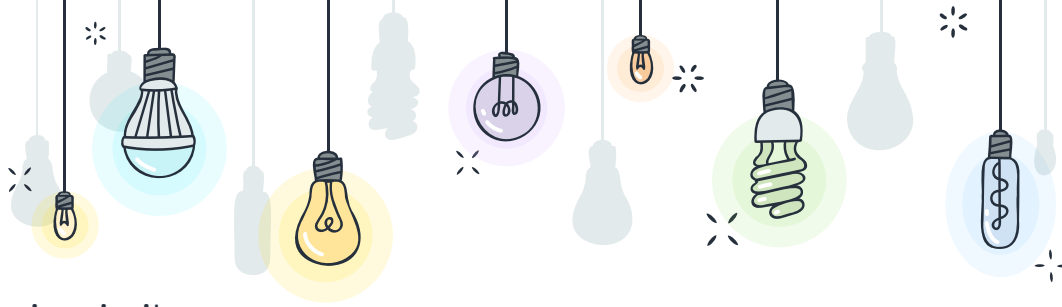


SCOPE: Admin addition  
Classroom, library, music addition  
Gym storage addition  
Renovate southern classrooms





# SAFETY



- Student/staff safety is priority
- Mobile safety team that travels from site-to-site
- Inspect for compliance with OSHA, Fire Code, and general occupant safety.
- Reports generated and given to FCPS project team and contractor for compliance.
- Air quality checks when construction impacts occupied areas in the school to include temperature, carbon monoxide, dust, odors, etc.
- Most issues can be addressed within 24 hours.
- COVID requirements – Face coverings are required. Dedicated hand washing stations and/or sanitizer stations are required for contractor employees.





# RENDERINGS



Materials: Brick, Metal Panels, Glazing



# ASSESSMENTS





# HEALTH AND SAFETY





**DO YOUR PART!**  
FOR YOURSELF, FOR OTHERS,  
FOR OUR SCHOOLS.

**Hold Up!**





**DO YOUR PART!**  
FOR YOURSELF, FOR OTHERS,  
FOR OUR SCHOOLS.

**Mask Up!**





**DO YOUR PART!**

FOR YOURSELF, FOR OTHERS,  
FOR OUR SCHOOLS.

**Vax Up!**





**DO YOUR PART!**  
FOR YOURSELF, FOR OTHERS,  
FOR OUR SCHOOLS.

**Wash Up and  
Cover Up!**





\* JOIN THE FROST MS PTA!



## Forms & Payments

[View all](#)

### Join the Frost Middle School PTA 2021-2022

Will close at 6/10/2022 3:00pm

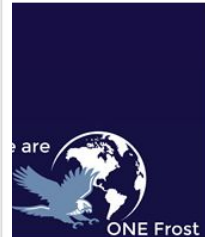
[View →](#)



Funds from PTA Memberships and donations are used in support of the Frost PTA's initiatives, the Grant Program is by far our largest expenditure. Your dollars will go directly to programs that enrich...

- Membership for Parent/Guardian	\$20.00
- Membership for Teacher	\$10.00

## Welcome to the Frost Middle School PTA Website



The Frost MS PTA is an active community of parents who provide support to Frost MS in many ways, including: a robust grants program; providing volunteers to help run book fairs, bingo and magazine drives; teacher appreciation and hospitality; and many others. Our support of this award-winning middle school is a key component to its success.

[Become a Member](#)

[Business Sponsors](#)



FROST MS BTSN WEBSITE





# THANKS FOR JOINING US!

