

Welcome Back Eagles!



Together we are strong. Together we are united. Together we soar.

We are Westlawn.

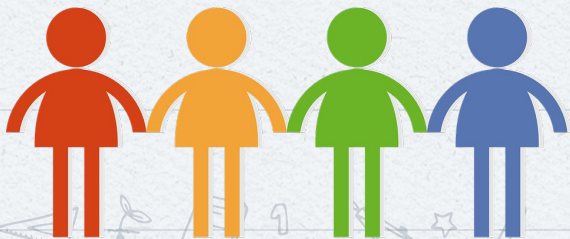
August 18, 2021

Welcome & Community Building

In the chat, say hello to the Westlawn community!

Share your preferred name and your children's grades.

It is important to me to be here today because...



Agenda

1	Important Updates
2	Health & Safety
3	Preparing for the First Day of School
4	Q & A

Meet our Wellness Team!

Carol Mullarkey, School Counselor

Isabelle Harris, School Counselor

Savannah Ferster, School Social Worker

Jill McNeill, School Psychologist



Important Dates

- August 19 - Welcome to Westlawn Event
- August 23 - First Day of School
- September 3 & 6 - Labor Day Break
- September 8 - Back to School Night (Virtual Event)



Laptop Return

Please return all laptops and mifi devices to the school as soon as possible for reimaging and updates.



Support for School Entrance Immunizations

- The pandemic has had a significant impact on families, and may have impacted ability to schedule regular/annual medical appointments. As a result, **FCPS will provide provisional admission to students who are not fully compliant with school entrance immunizations beginning on the first day of school.**
- K-12 students who do not meet school entrance immunization requirements or conditional enrollment requirements are to be provisionally admitted into school
 - The conditional enrollment process has not changed.
- FCPS will develop a plan to connect families to immunization resources to minimize or eliminate potential access barriers
- Schools will provide parent/guardian with communications for students who are provisionally admitted into school that includes a date that students must be compliant with school entrance requirements to continue school admission



New Required Vaccines

Meningococcal Conjugate (MenACWY) Vaccine - Effective July 1, 2021, a minimum of 2 doses of MenACWY vaccine. The first dose should be administered prior to entering 7th grade. The final dose should be administered prior to entering 12th grade.

Human Papillomavirus (HPV) Vaccine - Effective July 1, 2021, a complete series of 2 doses of HPV vaccine is required for students entering the 7th grade. The first dose shall be administered before the child enters the 7th grade. **After reviewing educational materials approved by the Board of Health, the parent or guardian, at the parent's or guardian's sole discretion, may elect for the child not to receive the HPV vaccine.**

Hepatitis A (HAV) Vaccine – Effective July 1, 2021, a minimum of 2 doses of Hepatitis A vaccine. The first dose should be administered at age 12 months or older.



Health & Safety



What We Know...

- 8:45 am - 3:30 pm
- Five days a week
- Layered prevention strategies will be in place for the Fall



Daily Symptom Screening

- to be conducted at home prior to coming to school
- no form required
- utilize Health Screening Questionnaire



Layered Prevention Strategies - Mask Up, Vax Up



- students and staff will wear face masks while indoors
 - outdoors not required
 - worn in cafeteria when not actively eating
- 3' distance between students to the greatest extent possible
- 6' distance between preK children to the greatest extent possible
- *social distancing will not be feasible in most FCPS schools, including Westlawn.*



Lunch Time

- Students required to wear masks when not actively eating
- Will wear masks in serving line
- Cafeteria will be consistently cleaned and sanitized by custodial staff
- Increased monitoring and supervision in cafeteria
- Assigned seating with seating charts will be created by teachers for use in the cafeteria
 - to support contact tracing process
- Utilizing outdoor spaces to the greatest extent possible



Protocols for Potential Temporary COVID-19 Closure

- required under SB 1303 to provide five days a week of in-person instruction
- FCPS is committed to continuity of learning; layered prevention strategies are in place to do everything possible to keep schools safe, healthy, and open.
 - will remain open unless otherwise directed by the Governor's Office



Protocols for Potential Temporary COVID-19: Individuals

Affected Population	Threshold Initiator	Support
Individual Students	Threshold to Initiate Closure: If student is directed by healthcare provider or FCHD to quarantine or isolate, or FCPS is directed by FCHD to pause that student's in-person learning as a matter of public health, but school and class remain open.	Support: Asynchronous assignments
Individual Teachers	Threshold to Initiate Closure: If teacher is directed by health provider or FCHD to quarantine or isolate, or FCPS is directed by FCHD to pause teacher's in-person teaching, but the teacher's school and class remain open for students.	Support: Schools will secure a substitute coverage. Students will continue to attend in person.



Protocols for Potential Temporary COVID-19: School, Class, Division

Affected Population	Threshold Initiator	Support
Class	Threshold to Initiate Closure: FCPS is directed by FCHD to temporarily close the class as a matter of public health.	Support: All students/staff in the impacted class will transition to virtual (synchronous) learning for that class, until the class can reopen.
School	Threshold to Initiate Closure: FCPS is directed by FCHD to temporarily close the entire class as a matter of public health.	Support: All students and staff at the school will transition to virtual (synchronous) learning.
Division	Threshold to Initiate Closure: FCPS is directed by FCHD or VDH, or Executive Order to temporarily close the division as a matter of public health.	Support: All students and staff will transition to virtual (synchronous) learning until in-person instruction can resume.



What happens if my child gets sick?

Sick Student Notification and Permission to Return to School/Child Care Forms

The Fairfax County Health Department (FCHD), in collaboration with the American Academy of Pediatrics (AAP), has developed *Sick Student Notification* and *Permission to Return to School/Child Care* forms. These forms will continue to be **required** when a student is:

- Sent home due to COVID Like Illness (CLI)
- Reports a positive COVID-19 test
- Is instructed to quarantine by a medical provider or the FCHD

This form is **not required** in cases when a parent / guardian has kept the student home from school with symptoms of CLI.



What happens if my child gets sick?

Sick Student Notification:

- The Permission to Return to School/Child form must be completed prior to the student's return to school.
- This form will be completed by the School Public Health Nurse (PHN), School Health Aide (SHA), or FCPS staff member and is retained by the parent/guardian.

Permission to Return to School/Child Care Form:

- This form will be completed by the child's healthcare provider and returned to the school.
- This form is to be filed in the student's cumulative folder.
- Copies of FCHD clearance letters (SARA alert forms) provided by the FCHD or a healthcare provider note will also be accepted. These documents should be stapled to the Return to School Form and placed in the student's cumulative folder.



Additional acceptable documentation for student return to school following illness:

- Copies of FCHD clearance letters (Sara alert forms) provided by the FCHD.
- Healthcare provider note will also be accepted.
- These documents should be stapled to the Return to School Form and placed in the student's cumulative folder.

The forms and translations can be located on the following links:

[SICK STUDENT NOTIFICATION](#) and [RETURN to SCHOOL FORM](#)



Preparing for the First Day of School



New Bell Schedule

Arrival: 8:30 am - 8:45 am

Dismissal: 3:30pm - 3:45pm

Staff members will be on duty in around the building during arrival and dismissal to ensure social distancing practices are maintained.



School Arrival and Dismissal

In order to keep our students and staff safe, parents will only be allowed in the building by appointment.

Walkers, bus riders and students at Kiss and Ride will be greeted by a staff member and will walk through the building to their classrooms, maintaining social distancing.



Walkers: Enter at Door 10 or Door 6

Bus Riders Grades K-2: Enter at Door 1

Bus Riders Grades 3-4: Enter at Door 11

Bus Riders Grades 5-6: Enter at Door 2



Kiss and Ride

We have a specialized system for Kiss & Ride!

K students will line up on the ramps outside, and 1st through 6th grade students will line up in the 3rd and 4th grade hallways.

Teachers from all grade levels will ensure social distancing while students wait to be called to Kiss and Ride.

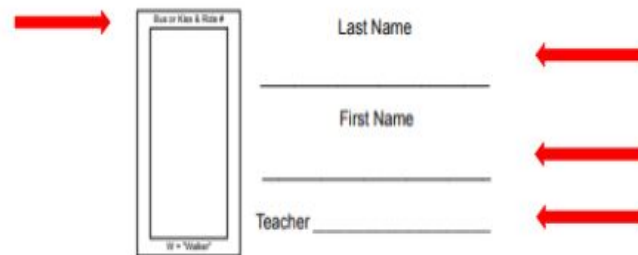
Note. If you have students enrolled in K or 1st Grade, arrive at 3:25; if you have children in older grades, please delay arriving until 3:30 - 3:35 to ensure a timely dismissal.



Preparing for Dismissal: Transportation Tags

This label will be placed on a colored piece of duct tape to indicate the route home:

- Kindergarten: Yellow Tape
- SACC/SRS: Red Tape
- Bus Riders: Green Tape
- Kiss & Ride: Blue Tape
- Walkers: Orange Tape



The diagram illustrates the layout of a transportation tag. On the left, a red arrow points to a vertical rectangular box. Inside the box, the text "Bus or Kiss & Ride # _____" is at the top, and "or 'Walker'" is at the bottom. To the right of the box are three horizontal lines for text entry. The first line is labeled "Last Name", the second "First Name", and the third "Teacher". To the right of each of these three lines is a red arrow pointing left, indicating where the colored duct tape should be placed.

- Note. If students have more than one route home, they will need TWO sets of tape.



Technology Readiness

All students will be assigned a computer the first week of school

- PreK: Devices will be sent home with students and stay home for students.
- Kindergarten, 1st, and 2nd Grades: Students will be assigned a device that stays in school. Schools will be prepared to send devices home with individual or groups of students as needed.
- Grades 3-12: Students will be assigned a device that could be transported to and from school.



First Day of School Checklist

- Water bottles
- 2 Masks - 2 layer, w/ no vents
- School Supplies
- Labeled baggie/container for mask removal
- Lunch (optional)
- Confirmed bus pick up time and afternoon drop off
- Updated phone, address and email with front office (News You Choose)



Kindergarteners' First Day

Due to the global pandemic parents will not be able to walk children into the classroom

- instead, take a photo at the marquis with your kindergartener
- we will have a template and staff member ready to take pictures



Ways to Connect and Communicate

- Community Conversations
- News You Choose
- Talking Points
- Schoology
- Twitter @WestlawnES



talkingpoints



News You Choose



schoology®





Fairfax County
PUBLIC SCHOOLS
ENGAGE • INSPIRE • THRIVE

www.fcps.edu

