



Principal's Coffee

12/15/2020

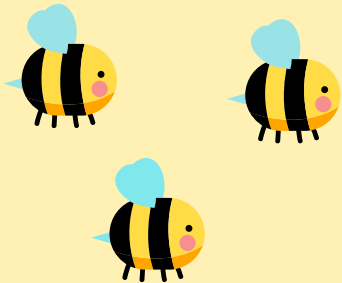


Table of Contents

01

Mitigation Metrics
& Safety Audits

02

Proposed Timelines &
Bell Schedule
Impacts

03

Reminders/To Do

04

Questions

Core Indicators, Fairfax, 12/14/2020

Total number of new cases per 100,000 persons within the last 14 days*

520.1

Percentage of RT-PCR tests that are positive during the last 14 days**

11.2%

FCPS Groups	Total Number of Cases Per 100,000 Persons	Percentage of PT-PCR Tests that are Positive during the last 14 Days
Group 1: 40 students <small>(Spec. Career Prep)</small>	> 200	> 10%
Group 2: 1,300 students <small>(FAC, ECCB, Spec. Career Prep)</small>	> 200	> 10%
Group 3: 4,100 students <small>(Select Spec. Ed.)</small>	> 200	≤ 10%
Group 4: 2,900 students <small>(Select Spec. Ed.)</small>	≤ 200	≤ 10%
Group 5: 6,800 students <small>(Head Start, PreK, Kindergarten & Select Spec. Ed.)</small>	≤ 200	< 8%
Group 6: 13,500 students <small>(1st & 2nd Grades, Select Spec. Ed.)</small>	≤ 200	< 8%
Group 7: 28,000 students <small>(3rd - 8th Grades, Select Spec. Ed.)</small>	TBD	TBD
Group 8: 52,800 students <small>(Middle & High School)</small>	TBD	TBD

Health Metrics

VDH Health Metrics

FCPS Dashboard

Mitigation Metrics

CDC Five Key Mitigation Measures

Stop the spread of germs that can make you and others sick!



Consistent and correct use of masks



Social distancing to the largest extent possible



Hand hygiene and respiratory etiquette



Cleaning and disinfection



Contact tracing in collaboration with your local health department

Mitigation Metrics

Safety Scoring Rubric

Overall School Grade	Description	Correctness Count	Consistency Count
5	All 5 strategies correctly and consistently Implemented	5	5
4	All 5 strategies correctly but inconsistently Implemented	5	4
3	3-4 strategies consistently and correctly Implemented	3 or 4	3 or 4
2	1-2 strategies correctly and consistently	1 or 2	1 or 2
1	No strategies implemented	0	0



DIVISION AVERAGE 3rd Core CDC Indicator Metric	5	4 - 4.99	3 - 3.99	2 - 2.99	1 - 1.99
INDICATOR RISK LEVEL for MITIGATING STRATEGIES	Lowest Risk	Lower Risk	Moderate Risk	Higher Risk	Highest Risk

The background features a light yellow gradient with a pattern of yellow hexagons. Some hexagons are solid yellow, while others are outlined in white, creating a honeycomb-like effect. The hexagons are arranged in a grid-like pattern, with some missing or faded in certain areas.

02

Proposed Timelines & Bell Schedule Changes

Proposed Timelines

contingent on SB Meeting on 1/5

Draft Updated In-Person Return Timeline

*Groups 1-3 will begin virtually for the first week following winter break

STUDENT GROUPS	Student In-Person Start Dates (Tuesdays)	Required Teacher Work from School Dates
Group 1-4: Select CTE and Spec. Ed. Group 5: PreK-K	January 12 (New Bell Schedule Starts)	No Later Than January 11
Group 6: Grades 1-2	January 19	No Later Than January 11
Group 7: Grades 3-4	January 26	No Later Than January 19
Group 7: Grades 5-6	February 2	No Later Than January 25
Group 8: Grade 7, 9 and 12 Poe, Glasgow, Holmes - Grade 6	January 26	No Later Than January 19
Group 8: Grade 8, 10 and 11 Poe, Glasgow, Holmes - Grade 7-8	February 2	No Later Than January 19

*MS/HS may begin offering in-person interventions starting on 1/11

*MS/HS will schedule orientation sessions for students new to the building prior to in-person return dates

Updated Bell Schedules

Revised Bell Schedules - Effective January 12, 2021

CURRENT BELL SCHEDULES		REVISED BELL SCHEDULES	
Middle School	7:30-2:15	Middle School	7:15-2:00
Secondary School	8:00-2:45	Secondary School	8:10-2:55
High School	8:10-2:55	High School	8:10-2:55
Thomas Jefferson	8:40-4:00	Thomas Jefferson	8:10-3:30
Elementary School	8:30-3:15 rolling earliest to 9:20-4:05 latest	Elementary School	9:10-3:55 or 10:05-4:50

There are 72 elementary school bells starting before 9:00 AM and 71 elementary school bells starting at 9:00 AM or later. The ratio of the RTS bell schedule is 67 schools on the early 9:10 bell and 76 schools on the late 10:05 bell.


Asynchronous Dates for Teacher Preparation

*(**if we move forward with phase in dates)*

Group	Student Return Date	Tentative Staff ASY Planning Days
Group 5 - PreK/K	1/12	Completed
Group 6 - 1st and 2nd grades	1/19	2 days completed 1/11, 1/15
Group 7 (Part 1) - 3rd and 4th grades	1/26	1/4, 1/11, 1/19, 1/21
Group 7 (Part 2) - 5th and 6th grades	2/2	1/4, 1/11, 1/28, 1/29

Changes at Stenwood

- Once K phases in, switch to weekly grade level lunch bunches
- Lunch schedules will have to be different at different grade levels
- Monday Enrichment will be phased out or greatly reduced
- Monday interventions will only be provided by instructional assistants and support staff
- New Bell Schedule applies to both Virtual and In Person students and is 9:10 - 3:55 (starting 1/12 - contingent on SB meeting)

The background features a honeycomb pattern of yellow hexagons with white outlines, arranged in a staggered grid. The pattern is most prominent on the left and right sides, fading towards the center.

03

**Reminders
& To Dos**

Upcoming Dates/Decisions



- January 5th - 8th - Preschool class remains virtual
- January 5th, next RTS School Board Meeting
 - Decision to include 3rd metric or not
- January 12th, change to bell schedule IF 3rd mitigation metric is implemented
- Week of January 4th - new instructional schedule shared with families
- Intention Form for 2021-22 School Year

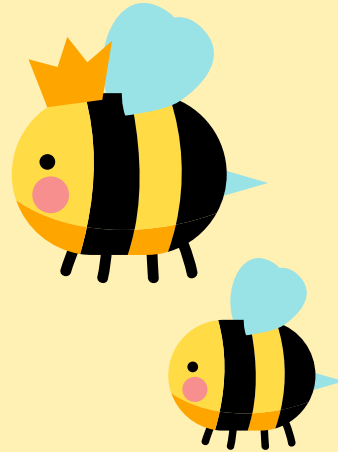
To Do's for In Person Families

- Health Commitment Form
- Attend In Person Principal's Coffee for group returning
- we will send out dates/link as they approach
- Look for/Complete In Person Survey



Reminder of Available Resources

- Anoma Hapangma, School Counselor ashapangma@fcps.edu
- Lynee Alston, School Counselor laalston@fcps.edu
 - Emotional wellness
 - Positive behavior support
 - Routines
 - Peer relationships
- Jill McNeil, School Psychologist jecorymcneil@fcps.edu
 - Mental Health
- Lorrie Appleton, School Social Worker lrappleton@fcps.edu
 - Community Resources - food, financial assistance, services
- Maria Meldrum, ESOL Teacher mbmeldrum@fcps.edu
 - Language services - translations, interpreters
- Jackie Krum, Technology Specialist jekrum@fcps.edu
 - Laptop issues, BCU/Schoology troubleshooting
- Parent Resource Center - <https://www.fcps.edu/resources/family-engagement/parent-resource-center>
 - Webinars, Consultations



A decorative pattern of yellow hexagons with white outlines, arranged in a honeycomb grid, located on the left side of the slide.

04

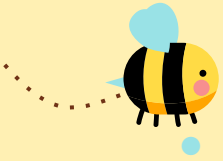
Questions

A decorative pattern of yellow hexagons with white outlines, arranged in a honeycomb grid, located on the right side of the slide.



Questions

- **Will we have an opportunity to change our selection?** No, we have made staffing decisions and schedules based on the choices that were made at the end of October. If you selected In Person and you are not comfortable at this point if 3rd metric is used, please communicate with us. We will put out an In Person Planning Google Form that will ask for this information. If you selected virtual and want In Person, we most likely will not be able to make the switch since we made staffing and schedule decisions based on your October confirmation of your summer selection. You can send us a request and we make note of it, but cannot guarantee we will be able to honor it.
- **Are students able to use the playground?** The guidance before was we could not use it during the cohorting of groups (through K-2s return), we have asked for update guidance.
- **Why do virtual students need to use the new bell schedule?** All students need to be on the same bell schedule regardless of in person or virtual because of concurrent learning, specials, and staffing.
- **When will I know which days my child is scheduled to come in person?** K-2 days were sent out in early November, 3-6 will be getting them today through eNotify.



Additional Questions

- **If the School Board approves mitigation, what role would the health metrics play in conjunction with the mitigation measures?** FCPS is currently working with the health department to finalize a decision-making tool. The tool would account for the different metrics within a matrix of risk to make determinations on whether schools could be open in person, hybrid, or be fully remote. Currently, FCPS is showing despite high community transmission, transmission inside FCPS buildings is low.
- **Audit teams and scores- can you comment on how well the schools are doing? Is there a certain number the schools need to reach?** FCPS did not share our score, but they do have score cutoffs that determine the level of risk based on the implementation of the safety ratings. We need a score between 4-5 to be in the “low risk” category. FCPS is looking for any disconnect between the mitigation scores at a given school and whether or not transmission is happening at that school.
- **Are testing and tracing aspects of returning to school?** FCPS has no requirements for COVID testing. There is contact tracing in place as part of one of our five mitigation strategies. We have a series of flowcharts to guide decision making when situations arise that all prompt us to contact the health department who conducts the tracing. Generally speaking, a class moves to virtual instruction pretty immediately if COVID is present in the classroom. If a student is sent home with COVID like symptoms, they must complete and meet the requirements on the [Return to School form](#) before being allowed reentry in the school building.
- **Does the third metric mean that we can still go back regardless of health metrics?** If the third metric is approved on Tuesday, Jan 5th, we will be able to move forward with the phase in plans that were proposed last week. The exact criteria of the decision-making tool is being finalized with the health department.

Additional Questions



- **Do you have all the safety/ PPE things you need?** We have a lot safety measures and PPE: 24 plexiglass dividers for teachers' classroom, a lot of hand sanitizer (county provided sanitizers stations throughout the school and donated bottles from one of our families!), disposable and reusable masks for students and adults (as needed), face shields for staff, and a significant amount of additional PPE dependent on the risk-level (feeding/toileting assistance, etc.), as needed.
- **After the vaccine, has there been any talk of how to differentiate for students who got ahead or fell behind as a result of the pandemic? Are our kids going to be repeating the curriculum in the next grade?** The instructional services department has been working to provide differentiated curriculum to reach students at all levels. It is typically not FCPS' to have students repeat grade levels/content. We will continue to assess to evaluate students' strengths and needs and provide differentiated instruction through small groups and flexible instructional groupings.
- **Will a lack of taking SOLs will decrease our school ratings on sites like GreatSchools.com?** Currently, SOLS are still on the table to continue for this school year and will be present as a benchmark for students' current performance, not school accreditation purposes. We don't tend to focus on outside rating systems, rather we use our our data on student performance, engagements surveys, and culture to drive school improvement and innovation.
- **How are kids who have returned in person faring with following the safety protocols?** We have been very impressed with the students' adherence to safety protocols within our building. We do believe, with practice/ modeling/ reinforcement, that our kids are capable of continuing to adhere to these guidelines. Thank you for preparing your children at home; this has made a positive difference. Experiences across the county vary based on school/ programs that have returned.

Thanks!

Please reach out with any questions,

Erica Riley,
esriley@fcps.edu

Meredith Mitchell,
mamitchell@fcps.edu

CREDITS: This presentation template was created
by **Slidesgo**, including icons by **Flaticon**, and
infographics & images by **Freepik**

