

# 2021 GUIDE TO SUMMER CAMPS

## in Arlington County

science



sports



nature



adventure



## Summer of Choice!

outdoor



creativity



indoor



Stay up-to-date on  
Summer Camps 2021  
visit our web page

[parks.arlingtonva.us/programs/  
summer-camps/](https://parks.arlingtonva.us/programs/summer-camps/)

Online Registration Begins 7am March 24, 2021  
**registration.arlingtonva.us**

### SEE WHAT'S INSIDE!

ARLINGTON  
VIRGINIA

DEPARTMENT OF PARKS  
AND RECREATION

Camps for Preschoolers . . . . .	6	Sports Camps . . . . .	11	Tweens/Teens Camps . . . . .	18
Creative Arts Camps . . . . .	6	Nature/History Camps . . . . .	15	Self-Registration Camps . . . . .	20
Classic Camps . . . . .	7	Cooking/Wellness Camps . . . . .	17	YMCA Camps . . . . .	22
Specialty/Exploration Camps . . . . .	8	For Individuals with Disabilities . . . . .	17		







What do you want to do this summer?

# There's Something for Everyone!

## Camps

### CAMPS FOR PRESCHOOLERS

#### CREATIVE ARTS CAMPS

Come in every shape and size, for those who want to learn to paint a picture, act in a play, throw a pot, sing a song and more!

#### CLASSIC CAMPS

A variety of programming options, both structured and unstructured, that include art, sports, and more.

#### SPECIALTY, IMAGINATION & EXPLORATION CAMPS

Bring kids with special interests in science, magic, history and imagination strategy games together.

#### SPORTS CAMPS

Available for the sports enthusiast who enjoys every sport in a sport combo camp, or for the camper who wants to learn or refine skills in a specific sport camp such as ultimate Frisbee or tennis.

#### NATURE, ADVENTURE OR HISTORY CAMPS

For kids who love the outdoors and want to learn about and enjoy nature...and maybe stretch their limits with challenges such as canoeing, caving and more.

#### COOKING & WELLNESS CAMPS

#### CAMPS FOR INDIVIDUALS WITH DISABILITIES

Camps specifically designed for individuals with disabilities. Please note! We can make modifications in any camp for kids with disabilities. Just let us know what camp and what you need.

#### TWEENS/TEENS CAMPS

Specialty, Sports, Cooking & Wellness, Community Camps, and Arts

#### CAMPS WITH SELF-REGISTRATION

Dance & Theater Arts. Separate registration process with providers.

#### YMCA CAMPS

Visit: <https://www.ymcadc.org/programs/camps/day-camp/>

Performing Arts! Sports! Arts & Crafts! Science! Nature! Gaming! Technology! And much more!

Summer was designed to give kids a break from school, help them try new experiences and grow mentally, physically and socially. Whether your child wants to refine a sports skill, get creative, be in a play, learn how to ride a bike, play classic and electronic games or explore the great outdoors, Arlington has something to offer.

Check out the Arlington County Summer Camp Catalog for camps and programs that keep kids engaged, active and focused on expanding their horizons! Arlington County programs offer lots of choices, safe and inviting environments, and the chance for children to develop strong bonds with their community. Kids get their fill of thrills through sports; showcase their talents through the arts; invigorate their imaginations through creative play; explore the outdoors through nature programs; and have adventures galore. All while making friends and lifelong memories.

To learn more about Arlington County Camps, check out the Parent Handbook at [parks.arlingtonva.us](https://parks.arlingtonva.us) after March 24, search "Parent Handbook"

## Arlington Camps for All Abilities

Individuals with disabilities are welcome to register for any program of interest.

We serve everyone, everywhere, everyday for any program of interest. To support this inclusion philosophy, all camp staff are trained to provide program modifications, utilize positive behavior supports, and create connections for individuals with and without disabilities.

Additionally, the Therapeutic Recreation office can help ensure that individualized modifications are in place for your camper to have a successful camp experience. Modifications could include creating and sharing individualized modification plans, conducting program observations, coach staff on implementing inclusion supports, adapted equipment and techniques, sign language interpreters, accessible facilities, large print and Braille materials and additional staffing when resources are available. Advanced notice for any requests for modifications are welcome. We strive to find the best fit for your camper and at times it may be necessary to change a camper's placement if the support, assistance, and modifications necessary for participation can best be provided at an alternate site. You can also check our Therapeutic Recreation (TR) Camps on pages 17. Contact the TR Office at [TRinfo@arlingtonva.us](mailto:TRinfo@arlingtonva.us), 703.228.4740 for more information.

# Camp Facts for Summer 2021

Everyone can have a great time this summer, but not at another's expense. All participants must follow safety guidelines and directions and be respectful of fellow campers, staff, and program boundaries. While each camp has a specific policy for each session, there are common policies among all Arlington camps. These policies were developed to be sure all campers are safe and have the best opportunity for an enriching and fun summer.

1. Arlington Parks & Recreation will manage **registrations for all camps in our camp catalog**. This will allow for a seamless registration and refund process with each of our camp providers.
2. Campers, their families, and staff will follow new and enhanced safety guidelines to minimize risks throughout the **summer**. Campers should arrive at camp wearing a mask.
3. Children must wear appropriate clothing and shoes for the camp and its activities. Sandals are not allowed except on water days.
4. Campers should bring water and a snack with them to each camp. For campers attending full day camp programs, they must also bring a lunch.
5. Caregivers should pick up a calendar of activities on the first day of each camp session on site.
6. Excess group insurance that is above and beyond personal medical insurance is available to camp participants to cover medical expenses incurred as a result of injury at camp.
7. Behavior resulting in extreme disruption or intentional harm to self, others or property can result in removal from the program according to the Code of Conduct Policy at the discretion of program staff. Camp counselors are trained to use supportive strategies and available resources to encourage positive participations as alternatives to removal.
8. To keep kids safe, summer programs will limit or cancel outdoor activities, or may even cancel programs, on "Code Red" days. Camper safety is the deciding factor.
9. Locations are subject to change (this catalog conveys the most correct information available before going to press). For updates, visit [here](#) or call us at 703.228.4747.
10. The Arlington County Board approves all Arlington County camp fees. The goal is to provide programs for all County children. You may qualify for reduced fees even in non-Arlington County camps. Call the registration Office for more information 703.228.4747.
11. Camps with insufficient enrollment are canceled. Registration staff will help direct families to comparable open programs.

## Qualified Staff Make It Happen!

Camp counselors are special people. Department of Parks and Recreation staff must love working with young people. They are creative, enthusiastic, committed and sincere...plus super-patient and loads of fun! In fact, many of Arlington's camp counselors have been campers themselves, often in the programs they now direct. A lot of our committed staff are school teachers, college students, and college graduates who hope to find a permanent job working with kids. They're a talented and fun bunch, each with loads of experience in his or her specialty area, and all committed to helping your child to be the best he or she can be. To ensure your children have a positive and fun experience, Arlington County invests many hours in staff training and development. In addition to meeting the qualifications for their position, all summer staff attends mandatory trainings that focus on promoting positive participation; creative expression; cooperative and adaptive games; heart-healthy and wellness activities; risk management and safety; child protective services; procedures and policies; planning activities; positive and productive scheduling; and developing welcoming spaces.

### Help Wanted!...You!

Want to have a blast this summer and make money doing it? Arlington County is looking for creative, enthusiastic, committed, sincere people who want to have fun to staff our summer camps. These are part-time to full-time temporary positions at a competitive salary. Great for teachers, college students and anyone who wants experience working with the best kids in the nation... Arlington kids! You can also support special interests in the arts, nature, sports or working with individuals with disabilities. Interested? Go to [parks.arlingtonva.us](https://parks.arlingtonva.us), search "Summer Employment."



## Camp Catalog Key

Camp codes and session numbers are listed under each camp description as follows.

Denotes Camp Name →	<b>Civil War Spy</b>		
Camp Description →	We found some important information about the enemy and need to get a message back to the Capital. In order to do so we'll learn about Civil War spies and the techniques they used such as codes, disguises and hiding places. Each day's activities will help us to get the message home, hopefully without getting caught! Staff to participant ratio 1:8.		
Camp Age Range →	Ages 7-9.		
Camp Location, Session, Camp Code →	Location	Session	Camp Code
Camp Time →	Fort C.F. Smith Park	5	40017
Camp Fees →	Core Camp Hours:		9am-12pm
	Core Fee:		\$164

Arlington Parks & Recreation will manage most **registrations for camps in our camp catalog**. Registration begins at 7am on March 24, 2021. Follow the registration guidelines on page 24 for more information.

## SATURDAY HOURS!

Sat., March 20, 9am-4pm

To help you prepare for summer camp, Parks & Recreation will be open for Saturday hours before registration begins. Stop by our safe and socially distanced office to create an account, get login information, renew or apply for fee reductions, \*drop off registration forms, set up payment plans and more. Masks are required.

Department of Parks & Recreation  
3700 S. Four Mile Run Drive  
Arlington, VA 22206

## ACCESS FOR ALL

Parks & Recreation camps, classes and more at a price you can afford!

Our fee reduction program helps Everyone, Everywhere, Every Day! Access for All. Easy to apply! Whether you have a short-term setback or something longer-term. Learn more [here](#) or call 703.228.4747.



## Important Phone Numbers

Camp Registration & Information .....	703.228.4747
Habla Español.....	703.228.4747
Job Opportunities .....	703.228.1856
Therapeutic Recreation .....	703.228.4740
TTY Number for All Programs .....	Use relay 711
Inclement Weather Hotline .....	703.228.4715

**MAR 24!**  
**2021**

Did you know that first day of camp registration is the busiest day for online registrations?


Make sure you get into the camps you want by preparing before the registration period begins. See page 24 for great registration tips!



# PLAN YOUR SUMMER FUN!



## JUNE 2021

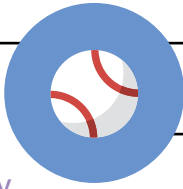
SESSIONS	Sunday	Monday	Tuesday	Wednesday	Thursday	Friday	Saturday	Notes
			1	2	3	4	5	
	6	7	8	9	10	11	12	
	13	14	15	16	17	18	19	
1	20	21	22	23	24	25	26	
2	27	28	29	30				

## JULY 2021

SESSIONS	Sunday	Monday	Tuesday	Wednesday	Thursday	Friday	Saturday	Notes
2					1	2	3	
3	4	5	6	7	8	9	10	
		NO CAMP JULY 5						
4	11	12	13	14	15	16	17	
5	18	19	20	21	22	23	24	
6	25	26	27	28	29	30	31	

## AUGUST 2021

SESSIONS	Sunday	Monday	Tuesday	Wednesday	Thursday	Friday	Saturday	Notes
7	1	2	3	4	5	6	7	
8	8	9	10	11	12	13	14	
9	15	16	17	18	19	20	21	
10	22	23	24	25	26	27	28	
	29	30	31					



We welcome folks from all around the DC Metropolitan area to our recreation programs.  
Non-residents of Arlington pay an additional 15 % fee.

# Where is it?

## Parks & Rec Registration Office

1 3700 S. Four Mile Run Drive 22206

## Community Centers

- 2 Arlington Mill Community Center  
909 S. Dinwiddie St. 22204
- 3 Aurora Hills Community Center  
735 18th St. S. 22202
- 4 Barcroft Sports + Fitness Center  
4200 S. Four Mile Run 22206
- 5 Carver Community Center  
1415 S. Queen St. 22204
- 6 Charles Drew Community Center  
3500 S. 23rd St. 22206
- 7 Fairlington Community Center  
3308 S. Stafford St. 22206
- 8 Gunston Community Center  
2700 S. Lang St. 22206
- 9 Langston-Brown Community Center  
2121 N. Culpeper St. 22207
- 10 Lubber Run Community Center  
300 N. Park Drive 22203
- 11 Madison Community Center  
3829 N. Stafford St. 22207
- 12 Thomas Jefferson Community Center  
3501 2nd St. S. 22204
- 13 Walter Reed Community Center  
2909 16th St. S. 22204

## Nature Centers

- 15 Gulf Branch Nature Center  
3608 N. Military Rd. 22207
- 16 Long Branch Nature Center  
625 S. Carlin Summers Rd. 22204
- 17 Potomac Overlook Park  
2845 N. Marcey Rd. 22207

## Parks & Playgrounds

- 18 Arlington Heights Park  
S. 9th St. & S. Irving St. 22204
- 19 Barcroft Park  
4200 S. Four Mile Run Dr. 22204
- 20 Bluemont Park  
601 N. Manchester St. 22203
- 21 Bon Air Park  
850 N. Lexington St. 22205
- 22 Doctors Run Park  
1301 S. George Mason Dr. 22204
- 23 Fort Barnard Park  
2101 S. Pollard St. 22204
- 24 Fort C.F. Smith Park  
2411 N. 24th St. 22207
- 25 Fort Scott Park  
2800 S. Fort Scott Dr. 22202
- 26 Glebe Road Park  
4211 N. Old Glebe Rd. 22207
- 27 Glencarlyn Park  
301 S. Harrison St. 22204
- 28 Greenbrier Park  
5201 N. 28th St. 22207
- 29 Gunston Park  
1401 S. 28th St. 22206
- 30 Hayes Park  
1516 N. Lincoln St. 22201
- 31 High View Park  
1945 N. Dinwiddie St. 22207
- 32 Jennie Dean Park  
3630 S. 27th St. 22206

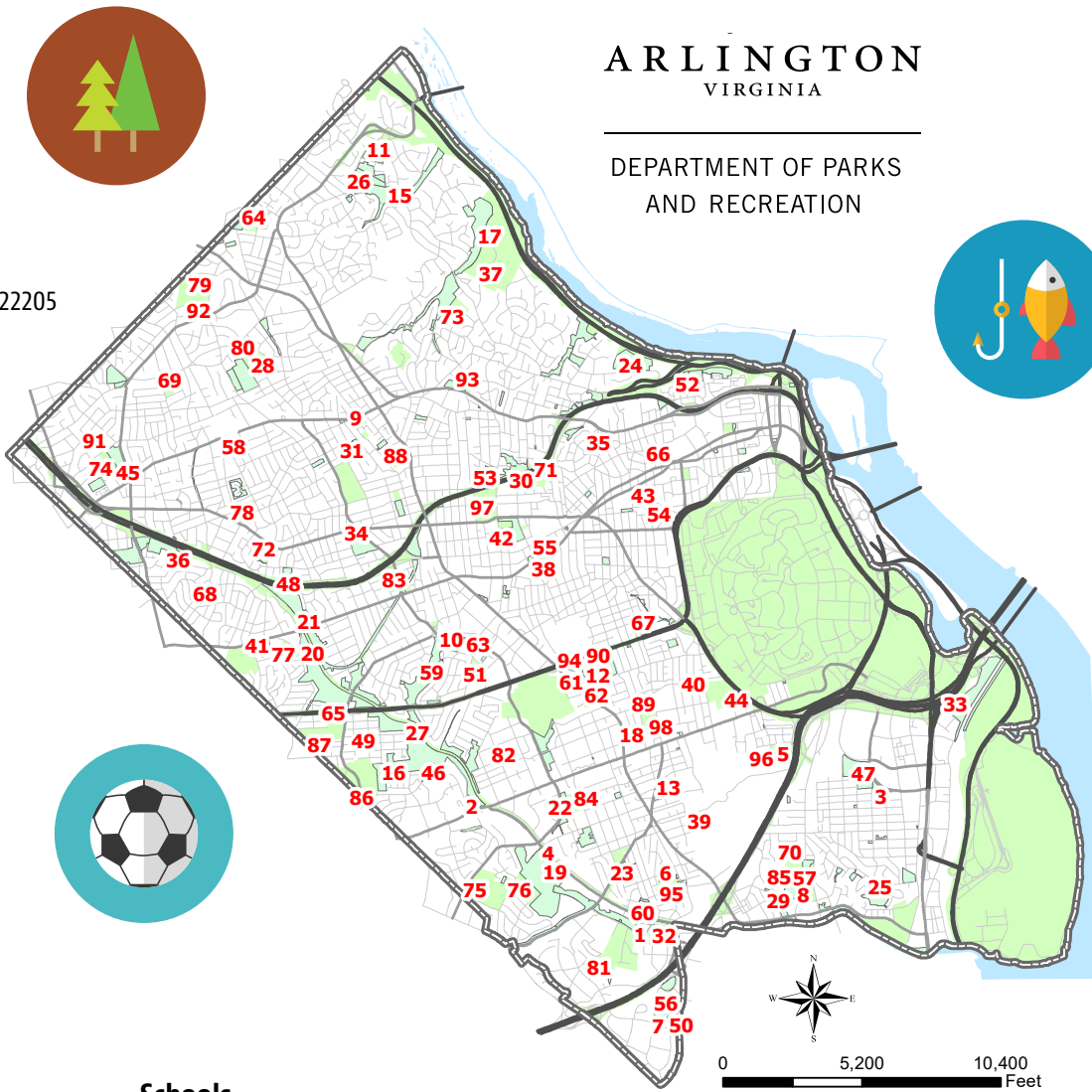
- 33 Long Bridge Park  
475 Long Bridge Dr. 22202
- 34 Lacey Woods Park  
1200 N. George Mason Dr. 22205
- 35 Lyon Village Park  
1800 N. Highland St. 22201
- 36 Madison Manor Park  
6225 N. 12th Rd. 22205
- 37 Marcey Road Park  
2722 N. Marcey Rd. 22207
- 38 Maury Park  
3550 Wilson Blvd. 22201
- 39 Nauck Park  
2600 S. 19th St. 22204
- 40 Penrose Park  
2200 S. 6th St. 22204
- 41 Powhatan Springs Park  
6020 Wilson Blvd. 22205
- 42 Quincy Park  
1021 N. Quincy St. 22201
- 43 Rocky Run Park  
1109 N. Barton St. 22201
- 44 Towers Park  
801 S. Scott St. 22204
- 45 Tuckahoe Park  
2400 N. Sycamore St. 22213
- 46 Tyrol Hill Park  
5101 S. 7th Rd. 22204
- 47 Virginia Highlands Park  
1600 S. Hayes St. 22202
- 48 Westover Park  
1001 N. Kennebec St. 22205

## Community Locations

- 49 Carlin Hall Center  
5711 S. 4th St. 22204
- 50 Cooperative Extension Services  
3308 S. Stafford St. 22206
- 51 Culpepper Garden  
4435 N. Pershing Dr. 22203
- 52 Dawson Terrace  
2133 N. Taft St. 22201
- 53 Quincy Parking Deck  
N. 15th St. & N. Quincy St. 22201
- 54 Woodbury Park  
2335 N. 11th St. 22205

## Art Facilities

- 55 Arlington Arts Center  
3550 Wilson Blvd. 22201
- 56 Fairlington Arts Studio  
3308 S. Stafford St. 22206
- 57 Gunston Arts Center  
2700 S. Lang St. 22206
- 58 Lee Arts Center  
5722 Lee Highway 22207
- 59 Lubber Run Amphitheatre  
N. 2nd & N. Columbus St. 22203
- 60 Theatre on the Run  
3700 S. Four Mile Run Dr. 22206
- 61 Thomas Jefferson Community Theatre  
125 S. Old Glebe. Rd. 22204
- 62 Thomas Jefferson Art Studios  
3501 S. 2nd St. 22204



## Schools

- 63 Barrett Elementary School  
4401 N. Henderson Rd. 22203
- 64 Jamestown Elementary School  
3700 N. Delaware St. 22207
- 65 Kenmore Middle School  
200 S. Carlin Summers Rd. 22204
- 66 Key Elementary School  
2300 Key Blvd. 22201
- 67 Long Branch Elementary School  
33 N. Fillmore St. 22201
- 68 McKinley Elementary School  
1030 N. McKinley Rd. 22205
- 69 Nottingham School  
5900 Little Falls Rd. 22207
- 70 Oakridge Elementary School  
1414 S. 24th St. 22202
- 71 Arlington Science Focus School  
1501 N. Lincoln St. 22201
- 72 Swanson Middle School  
5800 N. Wash. Blvd. 22205
- 73 Taylor Elementary School  
2600 N. Stuart St. 22207
- 74 Tuckahoe Elementary School  
6550 N. 26th St. 22213
- 75 Wakefield High School  
4901 S. Chesterfield Rd. 22206
- 76 Claremont Elementary School  
4700 S. Chesterfield Rd. 22205
- 77 Ashlawn Elementary School  
5950 N. 8th Rd. 22205
- 78 Walter Reed Elementary School  
1644 N. McKinley Rd. 22205
- 79 Williamsburg Middle School  
3600 N. Harrison St. 22207
- 80 Yorktown High School  
5201 N. 28th St. 22207
- 81 Abingdon Elementary  
3035 S. Abingdon St. 22206
- 82 Barcroft Elementary School  
625 S. Wakefield St. 22204
- 83 Arlington Traditional School  
855 N Edison St. 22205
- 84 Randolph Elementary School  
1306 S. Quincy St. 22204
- 85 Gunston Middle School  
2700 S. Lang Street 22206
- 86 Campbell Elementary School  
737 S. Carlin Summers Rd. 22204
- 87 Carlin Springs Elementary School  
5995 S. 5th Road 22204
- 88 Glebe Elementary School  
1770 N Glebe Rd. 22207
- 89 Patrick Henry Elementary School  
701 S. Highland St. 22204
- 90 Thomas Jefferson Middle School  
125 S. Old Glebe Rd. 22204
- 91 Bishop O'Connell School  
6600 Little Falls Rd. 22213
- 92 Discovery Elementary School  
5241 36th St N. 22207
- 93 Dorothy Hamm Middle School  
4100 Vacation Lane 22207
- 94 Fleet Elementary School  
115 S. Old Glebe Rd. 22204
- 95 Drew Model Elementary School  
3500 South 23rd St. 22206
- 96 H-B Elementary School  
1415 S. Queen Street 22204
- 97 Washington-Liberty High School  
1300 N. Stafford St. 22201
- 98 Arlington Career Center  
816 S. Walter Reed Dr. 22204





## Let's be safe together!

**Photo disclaimer:**  
Some photos in this guide were taken prior to the COVID-19 pandemic. Safety protocols will be in place for summer camps.



**For Teen/Tween Creative Arts Camps see page 18**



**For more Dance & Performing Arts Camps see Self-Registration Camps page 20**

## CAMPS FOR PRESCHOOLERS

### Little Explorers

Little Explorers Camp provides a fun camp experience for our youngest campers! Creative play, art and physical activity are combined with our themes to bring campers on a week full of adventures. Campers should bring a nut-free snack each day. **Ages 3-5.**

Location	Sessions	Camp Code
Carlin Hall	1, 2, 3, 4, 5, 6, 7, 8	510001
Fairlington	1, 2, 3, 4, 5, 6, 7, 8, 9	510002
Gunston	1, 2, 3, 4, 5, 6, 7, 8	510003
Langston Brown	1, 2, 3, 4, 5, 6, 7, 8	510004
Madison	1, 2, 3, 4, 5, 6, 7, 8	510005
<b>Core Camp Hours:</b>	<b>9:30am-12:30pm</b>	
<b>Core Fee:</b>	<b>\$145</b>	
<b>Fee/Session 3:</b>	<b>\$116</b>	

### Abrakadoodle: Jammin' Art Camp

The stage is set for artists that rock! This camp combines music and art for a wildly creative adventure. Campers design musical instruments, paint to the rhythm of music, create concert posters, and more. So step into the spotlight for a rocking good time! **Ages 3-5.**

Location	Session	Camp Code
Bluemont Park	2	511011
<b>Core Camp Hours:</b>	<b>9am-12pm</b>	
<b>Core Fee:</b>	<b>\$200</b>	
<b>Contact:</b>	703.538.4278 or swalia@abradoodle.com	

### Abrakadoodle: Little Artist, Big Ideas

We love kids who think BIG! Reach for the sky on a cloudy day! Erupt with excitement over volcanoes! Stomp joyfully and tromp through time with massive creatures! Explode with celebratory color! These big ideas tap in to young artists' curiosity the Abrakadoodle way! **Ages 3-5.**

Location	Session	Camp Code
Barcroft ES	3	511011
<b>Core Camp Hours:</b>	<b>9am-12pm</b>	
<b>Core Fee:</b>	<b>\$200</b>	
<b>Contact:</b>	703.538.4278 or swalia@abradoodle.com	

### Abrakadoodle: Doodle Drawing

Learn to draw by using recognizable shapes and lines to develop unique one of a kind artwork. After the initial instruction is finished, students will be further encouraged to make their art their own by adding personal touches through further drawing techniques and rendering. **Ages 3-5.**

Location	Session	Camp Code
Fleet ES	7	511011
<b>Core Camp Hours:</b>	<b>9am-12pm</b>	
<b>Core Fee:</b>	<b>\$200</b>	
<b>Contact:</b>	703.538.4278 or swalia@abradoodle.com	



### Abrakadoodle: Kids On Canvas

Let's paint!! Painting is so much fun when you try new things! Imagine a fantastic world inspired by nature, learn about shapes, create 3D buildings, explore maps, mix colors and more! **Ages 3-5.**

Location	Session	Camp Code
Lacey Woods Park	7	511012
<b>Core Camp Hours:</b>	<b>9am-12pm</b>	
<b>Core Fee:</b>	<b>\$200</b>	
<b>Contact:</b>	703.538.4278 or swalia@abradoodle.com	

### Arlington Soccer: Mini Soccer Summer Camp

This camp will provide age-appropriate, enjoyable activities as these young children begin to develop coordination, agility, balance and other movement skills. Soccer instruction, focused on developing individual ball control skills, will also be provided. The Arlington Soccer Mini Soccer Camps will be offered on Tuesday, Wednesday and Thursday (make-up day is Friday). **Ages 3-5.**

Location	Sessions	Camp Code
Gunston	1, 2, 4	511013
Kenmore	6	511013
Williamsburg MS	8, 9	511013
<b>Core Camp Hours:</b>	<b>9:30-11:30am</b>	
<b>Core Fee:</b>	<b>\$130</b>	
<b>Contact:</b>	703.527.0157 or info@arlingtonsoccer.com	

### Golden Boot Soccer: Lil' Boots Juniors

Specifically designed to create a positive first experience for preschool-age players, who will learn soccer fundamentals through fun activities and noncompetitive, small-sided games. Players will build self-esteem, confidence, and a sense of sportsmanship and fair play while developing coordination and physical, mental, and social skills. **Ages 3-4.**

Location	Session	Camp Code
Washington Liberty HS	5	511014
Gunston CC	7	511014
<b>Core Camp Hours:</b>	<b>9:30-10:30am</b>	
<b>Core Fee:</b>	<b>\$150</b>	
<b>Contact:</b>	703.287.0088 or info@goldenbootsoccer.com	

## CREATIVE ARTS CAMPS

### Creative Arts Camp: Art Explorers

In this one-week, half-day program, campers experiment with exciting art materials and techniques! We'll be working with the Nature Centers to incorporate the outdoors with art and provide a creative, imaginative and skill building camp. Each session will have its own themes and activities. Campers must have completed kindergarten or similar program. **Ages 5-8.**

Location	Sessions	Camp Code
Long Branch Nature Center	1, 2	570010
Fort C.F. Smith	3, 4	570010
Gulf Branch Nature Center	5, 6	570010
Glencarlyn Park	7, 8	570010
<b>Core Camp Hours:</b>	<b>9am-12pm</b>	
<b>Fee/Session 1, 2, 4, 5, 6, 7, 8:</b>	<b>\$140</b>	
<b>Fee/Session 3:</b>	<b>\$112</b>	

### Creative Arts Camp: Dawson Terrace

In this two-week, full-day program, campers experiment with exciting art materials and techniques including drawing, painting, sculpture, printmaking, and collage. We

emphasize creativity and imagination with a special focus on skill building. Each session has its own theme and activities. Five-year-olds must have completed kindergarten or similar program. **Ages 5-8.**

Location	Sessions	Camp Code
Dawson Terrace	1-2, 3-4, 5-6, 7-8	570012
<b>Core Camp Hours:</b>	<b>9am-3pm</b>	
<b>Fee/Session 1-2, 5-6, 7-8:</b>	<b>\$467</b>	
<b>Fee/Session 3-4:</b>	<b>\$420</b>	

### Creative Arts Camp: Fairlington

In this two-week, full-day program, campers experiment with exciting art materials and techniques including drawing, painting, sculpture, printmaking, and collage. We emphasize creativity and imagination with a special focus on skill building. Each session has its own theme and activities. **Ages 8-11.**

Location	Sessions	Camp Code
Fairlington	1-2, 3-4, 5-6, 7-8	570014
<b>Core Camp Hours:</b>	<b>9am-3pm</b>	
<b>Fee/Session 1-2, 5-6, 7-8:</b>	<b>\$467</b>	
<b>Fee/Session 3-4:</b>	<b>\$420</b>	

### Abrakadoodle: Jammin' Art Camp

The stage is set for artists that rock! This camp combines music and art for a wildly creative adventure. Campers design musical instruments, paint to the rhythm of music, create concert posters and more. So step into the spotlight for a rocking good time! **Ages 6-12.**

Location	Session	Camp Code
Bluemont Park	2	571011
<b>Core Camp Hours:</b>	<b>9am-3pm</b>	
<b>Extended Hours:</b>	<b>7-9am/3-6pm</b>	
<b>Core Fee:</b>	<b>\$300</b>	
<b>Extended Hour Fees:</b>	<b>\$50/\$75</b>	
<b>Contact:</b>	703.538.4278 or swalia@abradoodle.com	

### Abrakadoodle: Power Women Artists

Powerful women artists inspire, create, and influence the visual arts. Learn about women trailblazers, traditional art forms, and create striking art using mixed media, collage, textiles and more! **Ages 6-12.**

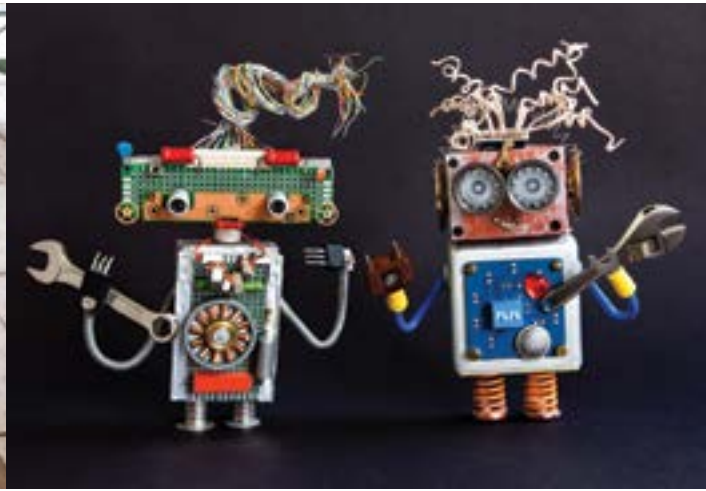
Location	Session	Camp Code
Glencarlyn Park	3	571011
<b>Core Camp Hours:</b>	<b>9am-3pm</b>	
<b>Extended Hours:</b>	<b>7-9am/3-6pm</b>	
<b>Core Fee:</b>	<b>\$300</b>	
<b>Extended Hour Fees:</b>	<b>\$50/\$75</b>	
<b>Contact:</b>	703.538.4278 or swalia@abradoodle.com	

### Abrakadoodle: Doodle Drawing

Learn to draw by using recognizable shapes and lines to develop unique one of a kind artwork. After the initial instruction is finished, students will be further encouraged to make their art their own by adding personal touches through further drawing techniques and rendering. **Ages 6-12.**

Location	Session	Camp Code
Fleet ES	7	571011
<b>Core Camp Hours:</b>	<b>9am-3pm</b>	
<b>Extended Hours:</b>	<b>7-9am/3-6pm</b>	
<b>Core Fee:</b>	<b>\$300</b>	
<b>Extended Hour Fees:</b>	<b>\$50/\$75</b>	
<b>Contact:</b>	703.538.4278 or swalia@abradoodle.com	





SESSION / DATES	
1	JUNE 21 – JUNE 25
2	JUNE 28 – JULY 2
3	JULY 5 – JULY 9 (NO CAMP JULY 5)
4	JULY 12 – JULY 16
5	JULY 19 – JULY 23
6	JULY 26 – JULY 30
7	AUG. 2 – AUG. 6
8	AUG. 9 – AUG. 13
9	AUG. 16 – AUG. 20
10	AUG. 23 – AUG. 27

### Abakadoodle: Kids On Canvas

Let's paint! Painting is so much fun when you try new things. Imagine a fantastic world inspired by nature, learn about shapes, create 3D buildings, explore maps, mix colors and more! **Ages 6-12.**

Location	Session	Camp Code
Lacey Woods Park	7	571012
<b>Core Camp Hours:</b>		9am-3pm
<b>Extended Hours:</b>		7-9am/3-6pm
<b>Core Fee:</b>		\$300
<b>Extended Hour Fees:</b>		\$50/\$75
<b>Contact:</b> 703.538.4278 or swalia@abakadoodle.com		

### AlphaBEST Education: DIY Arts & Crafts

Welcome to the wondrous world of DIY Crafts where we design, build and take home everything we create. Each project shows our young artists how science, math and language arts are needed to create unique items that are both beautiful and useful. Our artists will design, engineer and experiment with a variety of materials and techniques, and create fabulous crafts! **Ages 5-7.**

Location	Session	Camp Code
Fairlington CC	9	571013
<b>Core Camp Hours:</b>		9-3
<b>Extended Hours:</b>		7-9am/3-6pm
<b>Core Fee:</b>		\$275
<b>Extended Hour Fees:</b>		\$40/\$60
<b>Contact:</b> 866.300.7750 or arlington@alphabest.org		

### CARE Actor: Dramatic Kids!

Awaken creativity and boost self-confidence in this camp where theater and art come to life. Each day these young actors work towards creating an original play. Through improvisational acting games & theatrical technique, campers they learn the fundamentals of dramatic storytelling. A showcase of students' original work will be performed for friends and family on the last day of camp! **Ages 6-10.**

Location	Session	Camp Code
Barcroft ES	7	571014
<b>Core Camp Hours:</b>		9am-4pm
<b>Core Fee:</b>		\$345
<b>Contact:</b> 240.780.2686 or info@careactorkids.com		

### P.S. KARMA: Pin It 4 Fun

This camp fun, fun, fun! Students will create arts and crafts projects inspired by Pinterest. Students will gain exposure to many mediums. Students will experience learning hobbies such as marble painting, sensory jars, making wreaths and designing t-shirts. **Ages 8-15.**

Location	Sessions	Camp Code
Thomas Jefferson CC	2	571015
Barcroft ES	7	571015
<b>Core Camp Hours:</b>		9am-3pm
<b>Extended Hours:</b>		8-9am/3-5pm
<b>Core Fee:</b>		\$250
<b>Extended Hour Fees:</b>		\$40/\$75
<b>Contact:</b> 571.310.1163 or pskarma_gifts@gmail.com		

### P.S. KARMA: Get into Shapes

This camp consist of two parts. Students will learn to draw pictures using shapes. We will work on shading and adding definition to the shapes. The second part will be painting. Campers will learn different techniques for painting and gain exposure with different textures of paint from oil to acrylic. **Ages 8-15.**

Location	Sessions	Camp Code
Glencarlyn Park	5	571016
Barcroft ES	8	571016

<b>Core Camp Hours:</b>	9am-3pm
<b>Extended Hours:</b>	8-9am/3-5pm
<b>Core Fee:</b>	\$275
<b>Extended Hour Fees:</b>	\$40/\$75
<b>Contact:</b> 571.310.1163 or pskarma_gifts@gmail.com	

### SciGenius: ART Makers Lab

Campers will make a variety of crafts with different materials. We also have drawing and sketching for the upcoming artist. Hands-on fun projects led by professional art instructors bring out campers' creativity and imagination through our carefully designed lessons. Campers will be grouped by age/ skill level. **Ages 5-12.**

Location	Session	Camp Code
Langston Brown CC	6	571017
<b>Core Camp Hours:</b>		9am-4pm
<b>Extended Hours:</b>		8-9am/4-6pm
<b>Core Fee:</b>		\$385
<b>Extended Hour Fees:</b>		\$40/\$80
<b>Contact:</b> 877.684.1260 or info@scigenius.com		

### SciGenius: ART Makers Lab (Half Day AM)

Campers will make a variety of crafts with different materials. We also have drawing and sketching for the upcoming artist. Hands-on fun projects led by professional art instructors bring out campers' creativity and imagination through our carefully designed lessons. Campers will be grouped by age/ skill level. **Ages 5-12.**

Location	Session	Camp Code
Langston Brown CC	6	571018
<b>Core Camp Hours:</b>		9am-12pm
<b>Extended Hours:</b>		8-9am
<b>Core Fee:</b>		\$210
<b>Extended Hour Fees:</b>		\$40
<b>Contact:</b> 877.684.1260 or info@scigenius.com		

### SciGenius: ART Makers Lab (Half Day PM)

Campers will make a variety of crafts with different materials. We also have drawing and sketching for the upcoming artist. Hands-on fun projects led by professional art instructors bring out campers' creativity and imagination through our carefully designed lessons. Campers will be grouped by age/ skill level. **Ages 5-12.**

Location	Session	Camp Code
Langston Brown CC	6	571019
<b>Core Camp Hours:</b>		1-4pm
<b>Extended Hours:</b>		4-6pm
<b>Core Fee:</b>		\$210
<b>Extended Hour Fees:</b>		\$80
<b>Contact:</b> 877.684.1260 or info@scigenius.com		

## CLASSIC CAMPS

### Summer Odyssey

Campers will enjoy a traditional camp experience-complete with fun activities both physical and creative. Kids will be engaged in activities outdoors and will enjoy an all-encompassing camp experience. **Ages 10-14.**

Location	Sessions	Camp Code
Madison CC	2,3,4,5,6,7,8	552010
<b>Core Camp Hours:</b>		9am-3pm
<b>Core Fee:</b>		\$180
<b>Fee/Session 3:</b>		\$144

### RecPlay

This camp is great for kids who want the complete camp experience! High-energy, fun camp days are designed around a creative weekly theme. Campers will participate in active play through sports, cooperative games, creative and expressive arts. Each week a specialty themed event will be held on site! **Ages 4-10 (4 yr olds must be 5 by Sept. 30, 2021).**

Location	Sessions	Camp Code
Madison CC	2,3,4,5,6,7,8,9	522012
Carver CC	2,3,4,5,6,7,8	522013
<b>Core Camp Hours:</b>		8:30am-3:30pm
<b>Core Fee:</b>		\$170
<b>Fee/Session 3:</b>		\$136



### Summer Fun Playground

Set entirely in a park setting, this camp is for the adventurous camper who enjoys nature and the outdoor elements. Each day campers will experience a variety of recreational activities designed around a weekly theme. Your child will participate in active play through sports, cooperative games, creative and expressive arts. All activities are held outside on the grounds of a park. **Ages 4-10 (4yr olds must be 5 by Sept. 30, 2021).**

Location	Sessions	Camp Code
Highview Park	2,3,4,5,6,7,8	522014
Westover Park	2,3,4,5,6,7,8	522015
<b>Core Camp Hours:</b>		9am-3pm
<b>Core Fee:</b>		\$105
<b>Fee/Session 3:</b>		\$84

### AlphaBEST Education: Going Places!

Based on the award winning book, Going Places. As members of the Going Places Creative Problem-Solving Agency, campers will tackle new problems and create solutions through a variety of activities including art, engineering, drama, science, and physical activity games. New themes and activities each week! **Ages 6-11.**

Location	Sessions	Camp Code
Barcroft ES	1,2	521031
Madison Manor	3,4,5,6,7,8,9,10	521031
<b>Core Camp Hours:</b>		7:30am-6pm
<b>Core Fee:</b>		\$275
<b>Fee/Session 3:</b>		\$220
<b>Contact:</b> 866.300.7750 or arlington@alphabest.org		

### Looking for the Camp Guide by Category?

It's moved Online! Visit [parks.arlingtonva.us/programs/summer-camps/](https://parks.arlingtonva.us/programs/summer-camps/) to search all the camp listings by camp title, category, location, age, or start date! It's the fastest and easiest way to find the camp option that's best for you.

### The Parent Handbook

To learn more about Arlington County camps check out the Parent Handbook at [parks.arlingtonva.us](https://parks.arlingtonva.us) and search "Parent Handbook" after March 24, 2021.





## SPECIALTY, IMAGINATION, & EXPLORATION

### AlphaBEST Education: Chemistry Crimes Mysteries (Half Day AM)

Team up with legendary Chemistry Crime detective Sherlock Gnomes to investigate a series of suspicious crimes based on chemistry experiments. Each mission is introduced by Sherlock Gnomes via video with a silly crime scene and ends with our Science Sleuths creating a chemical reaction in the lab. Real science + ridiculous crimes = Lots of learning and laughs. **Ages 5-7.**

Location	Sessions	Camp Code
Glencarlyn Park	1, 4, 6	573054
Fairlington CC	9, 10	573054
<b>Core Camp Hours:</b>		9am-12pm
<b>Core Fee:</b>		\$225
<b>Contact:</b>	866.300.7750 or arlington@alphabest.org	

### AlphaBEST Education: Maker Space: Gadgets, Gizmos and Hacks

Welcome to the AlphaBEST engineering lab where ingenuity and creativity are key. Weekly engineering tasks challenge students to invent, hack, tinker and play their way to creative problem solving. Together we will create FUN! **Ages 5-7.**

Location	Sessions	Camp Code
Glencarlyn Park	2	573055
Fairlington CC	10	573055
Fleet ES	7	573055
Thomas Jefferson CC	6	573055
<b>Core Camp Hours:</b>		9am-3pm
<b>Extended Hours:</b>		7-9am/3-6pm
<b>Core Fee:</b>		\$275
<b>Extended Hour Fees:</b>		\$40/\$60
<b>Contact:</b>	866.300.7750 or arlington@alphabest.org	

### AlphaBEST Education: Adventures in Engineering

Developed by the Museum of Science, Boston this workshop emphasizes the Engineering Design Process encouraging creative-problem-solving and innovation. Campers will recycle items that would ordinarily be discarded by turning them into toys, sculptures, and household objects. We'll use recycled materials to engineer toy cars, then compete in a Recycled Racer Rally! **Ages 7-12.**

Location	Sessions	Camp Code
Fleet ES	8	573056
Thomas Jefferson CC	3, 5	573056
<b>Core Camp Hours:</b>		9am-3pm
<b>Extended Hours:</b>		7-9am/3-6pm
<b>Core Fee:</b>		\$225
<b>Extended Hour Fees:</b>		\$40/\$60
<b>Fee/Session 3:</b>		\$180
<b>Contact:</b>	866.300.7750 or arlington@alphabest.org	

### AlphaBEST Education: Coding with Bloxels & Ozobots

Spend part of the week learning to code with Ozobots-tiny robots with big personalities. Campers control Ozobot movements using OzoBlockly, a programming language that snaps together like puzzle pieces. Then, transition to

video game design with Bloxels, the most intuitive platform for creating video games. Teams will learn how to use story blocks to tell narratives, build logic puzzles with action blocks and transform their character with power-ups. This maker experience instantly turns physical creations into digital games. **Ages 7-12.**

Location	Sessions	Camp Code
Barcroft ES	1	573057
Discovery ES	4	573057
Fairlington CC	3	573057
Fleet ES	7, 8	573057
<b>Core Camp Hours:</b>		9am-3pm
<b>Extended Hours:</b>		7-9am/3-6pm
<b>Core Fee:</b>		\$225
<b>Extended Hour Fees:</b>		\$40/\$60
<b>Fee/Session 3:</b>		\$180
<b>Contact:</b>	866.300.7750 or arlington@alphabest.org	

### Boolean Girl: Storytelling in Scratch

Mixing hands-on coding with interactive play, your computer scientist will build an animated story of their own design applying their creativity and newly learned programming skills. Guided by our rockstar instructors, your daughter will have a blast. Even Pixar will be impressed with the final creations! **Ages 8-10. Sessions 2 & 7 are coed.**

Location	Sessions	Camp Code
Marymount Univ.	1, 2, 4, 6, 8, 9	573058
<b>Core Camp Hours:</b>		9am-3pm
<b>Extended Hours:</b>		8-9am/3-6pm
<b>Core Fee:</b>		\$399
<b>Extended Hour Fees:</b>		\$75/\$100
<b>Contact:</b>	202.996.8241 or info@booleangirl.org	

### Boolean Girl: Scratch Skills, Choose Your Own Adventure

Your young developer will be challenged to design and develop an interactive adventure where the player makes choices, changing the outcome. They'll build their coding skills learning about conditionals, events, variables, and other advanced coding techniques. By the end, students will be one step closer to becoming a Videogame Designer! **Ages 8-11. Sessions 2 & 7 are coed.**

Location	Sessions	Camp Code
Marymount Univ.	2, 4, 5, 6, 7, 8	573059
<b>Core Camp Hours:</b>		9am-3pm
<b>Extended Hours:</b>		8-9am/3-6pm
<b>Core Fee:</b>		\$399
<b>Extended Hour Fees:</b>		\$75/\$100
<b>Contact:</b>	202.996.8241 or info@booleangirl.org	

### Boolean Girl: Game Building in Scratch

Young coders are challenged to create a platform game (think Super Mario Bros., Donkey Kong) of their own design. Learn advanced game techniques like keeping score, adding timers, and leveling up, making sprites jump, and interact with objects. This class is the first step towards creating more advanced, multi-level games! **Ages 9-11. Sessions 2 & 7 are coed.**

Location	Sessions	Camp Code
Marymount Univ.	2, 5, 6, 7, 8	573060
<b>Core Camp Hours:</b>		9am-3pm
<b>Extended Hours:</b>		8-9am/3-6pm
<b>Core Fee:</b>		\$399
<b>Extended Hour Fees:</b>		\$75/\$100
<b>Contact:</b>	202.996.8241 or info@booleangirl.org	

### Learn Now Music: The Ultimate Music Experience!

Campers will be introduced to a variety of musical instruments and concepts including piano, guitar, violin, drums, voice and movement. Campers participate in musical games, crafts, musical listening excerpts, related projects and more! Free instrument rentals are provided for in-camp use and at-home exploration. Instruments differ between the a.m. and p.m. sessions. **Ages 5-12.**

Location	Sessions	Camp Code
Hayes Park	1, 3, 4, 5, 6, 7, 9	573064
<b>Core Camp Hours:</b>		9am-5pm
<b>Extended Hours:</b>		8-9am/5-6pm
<b>Core Fee:</b>		\$500
<b>Extended Hour Fees:</b>		\$50/\$50
<b>Contact:</b>	800.399.6414 or CustomerService@LearnNowMusic.com	

### Learn Now Music: The Ultimate Music Experience! (Half Day AM)

Campers will be introduced to a variety of musical instruments and concepts including piano, guitar, violin, drums, voice and movement. Campers participate in musical games, crafts, musical listening excerpts, related projects and more! Free instrument rentals are provided to borrow for in-camp use and at-home exploration. Instruments differ between the a.m. and p.m. sessions. **Ages 5-12.**

Location	Sessions	Camp Code
Hayes Park	1, 3, 4, 5, 6, 7, 9	573062
<b>Core Camp Hours:</b>		9am-1pm
<b>Extended Hours:</b>		8-9am
<b>Core Fee:</b>		\$250
<b>Extended Hour Fees:</b>		\$50
<b>Contact:</b>	800.399.6414 or CustomerService@LearnNowMusic.com	

### Learn Now Music: The Ultimate Music Experience! (Half Day PM)

Campers will be introduced to a variety of musical instruments and concepts including piano, guitar, violin, drums, voice and movement. Campers participate in musical games, crafts, musical listening excerpts, related projects and more! Free instrument rentals are provided for in-camp use and at-home exploration. Instruments differ between the a.m. and p.m. sessions. **Ages 5-12.**

Location	Sessions	Camp Code
Hayes Park	1, 3, 4, 5, 6, 7, 9	573063
<b>Core Camp Hours:</b>		1-5pm
<b>Extended Hours:</b>		5-6pm
<b>Core Fee:</b>		\$250
<b>Extended Hour Fees:</b>		\$50
<b>Contact:</b>	800.399.6414 or CustomerService@LearnNowMusic.com	

### SciGenius: Safari Camp Robotics

Campers will learn about animal species from around the world, including: a gorilla, a giraffe, and a turtle and explore their mannerisms. They will build a robot that resembles their appearance and mimics them by writing a program so that the robot accurately imitates their behavior. **Ages 5-12.**

Location	Session	Camp Code
Bluemont Park	1	573065
<b>Core Camp Hours:</b>		9am-4pm
<b>Extended Hours:</b>		8-9am/4-6pm
<b>Core Fee:</b>		\$385
<b>Extended Hour Fees:</b>		\$40/\$80
<b>Contact:</b>	877.684.1260 or info@scigenius.com	

### SciGenius: Safari Camp Robotics (Half Day AM)

Campers will learn about animal species from around the world, including: a gorilla, a giraffe, and a turtle and explore their mannerisms. They will build a robot that resembles their appearance and mimics them by writing a program so that the robot accurately imitates their behavior. **Ages 5-12.**

Location	Session	Camp Code
Bluemont Park	1	573066
<b>Core Camp Hours:</b>		9am-12pm
<b>Extended Hours:</b>		8-9am
<b>Core Fee:</b>		\$210
<b>Extended Hour Fees:</b>		\$40
<b>Contact:</b>	877.684.1260 or info@scigenius.com	



## SciGenius: Safari Camp Robotics (Half Day PM)

Campers will learn about animal species from around the world, including: a gorilla, a giraffe, and a turtle and explore their mannerisms. They will build a robot that resembles their appearance and mimics them by writing a program so that the robot accurately imitates their behavior. **Ages 5-12.**

Location	Session	Camp Code
Bluemont Park	1	573067
<b>Core Camp Hours:</b>		1-4pm
<b>Extended Hours:</b>		4-6pm
<b>Core Fee:</b>		\$210
<b>Extended Hour Fees:</b>		\$80
<b>Contact:</b>	877.684.1260 or info@scigenius.com	

## SciGenius: Future Innovators: Engineering

Design-Build-Test-Repeat! Join us for a week of EXTREME Engineering challenges! Campers will learn about Structural and Materials Science, as they compare the strengths of different materials and shapes by performing both non-destructive and destructive testing, all with the goal of improving their Engineering Designs. **Ages 5-12.**

Location	Session	Camp Code
Bluemont Park	3	573065
<b>Core Camp Hours:</b>		9am-4pm
<b>Extended Hours:</b>		8-9am/4-6pm
<b>Core Fee:</b>		\$385
<b>Extended Hour Fees:</b>		\$40/\$80
<b>Contact:</b>	877.684.1260 or info@scigenius.com	

## SciGenius: Future Innovators: Engineering (Half Day AM)

Design-Build-Test-Repeat! Join us for a week of EXTREME Engineering challenges! Campers will learn about Structural and Materials Science, as they compare the strengths of different materials and shapes by performing both non-destructive and destructive testing, all with the goal of improving their Engineering Designs. **Ages 5-12.**

Location	Sessions	Camp Code
Bluemont Park	3	573066
<b>Core Camp Hours:</b>		9am-12pm
<b>Extended Hours:</b>		8-9am
<b>Core Fee:</b>		\$210
<b>Extended Hour Fees:</b>		\$40
<b>Contact:</b>	877.684.1260 or info@scigenius.com	

## SciGenius: Future Innovators: Engineering (Half Day PM)

Design-Build-Test-Repeat! Join us for a week of EXTREME Engineering challenges! Campers will learn about Structural and Materials Science, as they compare the strengths of different materials and shapes by performing both non-destructive and destructive testing, all with the goal of improving their Engineering Designs. **Ages 5-12.**

Location	Session	Camp Code
Bluemont Park	3	573067
<b>Core Camp Hours:</b>		1-4pm
<b>Extended Hours:</b>		4-6pm
<b>Core Fee:</b>		\$210
<b>Extended Hour Fees:</b>		\$80
<b>Contact:</b>	877.684.1260 or info@scigenius.com	

## SciGenius: Hands-on Science

Love Science? Campers will see how science is involved in everyday life. Students will learn and implement the Scientific Method and test their hypotheses by performing hands-on experiments and will discover Newtonian Law to various chemical reactions. **Ages 5-12.**

Location	Session	Camp Code
Langston Brown CC	4	573065
<b>Core Camp Hours:</b>		9am-4pm
<b>Extended Hours:</b>		8-9am/4-6pm
<b>Core Fee:</b>		\$385
<b>Extended Hour Fees:</b>		\$40/\$80
<b>Contact:</b>	877.684.1260 or info@scigenius.com	

## SciGenius: Hands-on Science (Half Day AM)

Love Science? Campers will see how science is involved in everyday life. Students will learn and implement the Scientific Method and test their hypotheses by performing

hands-on experiments and will discover Newtonian Law to various chemical reactions. **Ages 5-12.**

Location	Session	Camp Code
Langston Brown CC	4	573066
<b>Core Camp Hours:</b>		9am-12pm
<b>Extended Hours:</b>		8-9am
<b>Core Fee:</b>		\$210
<b>Extended Hour Fees:</b>		\$40
<b>Contact:</b>	877.684.1260 or info@scigenius.com	

## SciGenius: Hands-on Science (Half Day PM)

Love Science? Campers will see how science is involved in everyday life. Students will learn and implement the Scientific Method and test their hypotheses by performing hands-on experiments and will discover Newtonian Law to various chemical reactions. **Ages 5-12.**

Location	Session	Camp Code
Langston Brown CC	4	573067
<b>Core Camp Hours:</b>		1-4pm
<b>Extended Hours:</b>		4-6pm
<b>Core Fee:</b>		\$210
<b>Extended Hour Fees:</b>		\$80
<b>Contact:</b>	877.684.1260 or info@scigenius.com	

## SciGenius: Camp CSI

Learn about forensic science and become a SciGenius detective! Campers will learn about investigative techniques and use chemistry. They'll learn how forensic experts use science to discover the hidden clues left behind at crime scenes and how that helps investigators solve difficult cases. **Ages 5-12.**

Location	Session	Camp Code
Langston Brown CC	7	573065
<b>Core Camp Hours:</b>		9am-4pm
<b>Extended Hours:</b>		8-9am/4-6pm
<b>Core Fee:</b>		\$385
<b>Extended Hour Fees:</b>		\$40/\$80
<b>Contact:</b>	877.684.1260 or info@scigenius.com	

## SciGenius: Camp CSI (Half Day AM)

Learn about forensic science and become a SciGenius detective! Campers will learn about investigative techniques and use chemistry. They'll learn how forensic experts use science to discover the hidden clues left behind at crime scenes and how that helps investigators solve difficult cases. **Ages 5-12.**

Location	Session	Camp Code
Langston Brown CC	7	573066
<b>Core Camp Hours:</b>		9am-12pm
<b>Extended Hours:</b>		8-9am
<b>Core Fee:</b>		\$210
<b>Extended Hour Fees:</b>		\$40
<b>Contact:</b>	877.684.1260 or info@scigenius.com	

## SciGenius: Camp CSI (Half Day PM)

Learn about forensic science and become a SciGenius detective! Campers will learn about investigative techniques and use chemistry. They'll learn how forensic

experts use science to discover the hidden clues left behind at crime scenes and how that helps investigators solve difficult cases. **Ages 5-12.**

Location	Session	Camp Code
Langston Brown CC	7	573067
<b>Core Camp Hours:</b>		1-4pm
<b>Extended Hours:</b>		4-6pm
<b>Core Fee:</b>		\$210
<b>Extended Hour Fees:</b>		\$80
<b>Contact:</b>	877.684.1260 or info@scigenius.com	

## SciGenius: Drone & Aviation

Ready, Set, Drone! In our fun-filled program, campers go through Droneology, the online drone education platform, master basic piloting skills, construct an obstacle course to fly through and stage a final race to showcase their cumulative knowledge. We also using coding to fly our drones and put critical thinking to the test. **Ages 5-12.**

Location	Session	Camp Code
Glebe ES	8	573065
<b>Core Camp Hours:</b>		9am-4pm
<b>Extended Hours:</b>		8-9am/4-6pm
<b>Core Fee:</b>		\$385
<b>Extended Hour Fees:</b>		\$40/\$80
<b>Contact:</b>	877.684.1260 or info@scigenius.com	

## SciGenius: Drone & Aviation (Half Day AM)

Ready, Set, Drone! In our fun-filled program, campers go through Droneology, the online drone education platform, master basic piloting skills, construct an obstacle course to fly through and stage a final race to showcase their cumulative knowledge. We also using coding to fly our drones and put critical thinking to the test. **Ages 5-12.**

Location	Session	Camp Code
Glebe ES	8	573066
<b>Core Camp Hours:</b>		9am-12pm
<b>Extended Hours:</b>		8-9am
<b>Core Fee:</b>		\$210
<b>Extended Hour Fees:</b>		\$40
<b>Contact:</b>	877.684.1260 or info@scigenius.com	

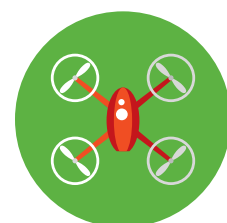
## SciGenius: Drone & Aviation (Half Day PM)

Ready, Set, Drone! In our fun-filled program, campers go through Droneology, the online drone education platform, master basic piloting skills, construct an obstacle course to fly through and stage a final race to showcase their cumulative knowledge. We also using coding to fly our drones and put critical thinking to the test. **Ages 5-12.**

Location	Session	Camp Code
Glebe ES	8	573067
<b>Core Camp Hours:</b>		1-4pm
<b>Extended Hours:</b>		4-6pm
<b>Core Fee:</b>		\$210
<b>Extended Hour Fees:</b>		\$80
<b>Contact:</b>	877.684.1260 or info@scigenius.com	

## SESSION / DATES

1	JUNE 21 – JUNE 25
2	JUNE 28 – JULY 2
3	JULY 5 – JULY 9 (NO CAMP JULY 5)
4	JULY 12 – JULY 16
5	JULY 19 – JULY 23
6	JULY 26 – JULY 30
7	AUG. 2 – AUG. 6
8	AUG. 9 – AUG. 13
9	AUG. 16 – AUG. 20
10	AUG. 23 – AUG. 27



Learn more about  
Camps for All Abilities  
and how to access  
inclusion support  
services on Page 2



COUNTY ONLINE  
REGISTRATION  
BEGINS AT 7AM

MAR 24!  
2021



### SciGenius: Mission Moon Robotics

Building and programming futuristic robots is a great way to introduce physics and astronomy. In order to boost imagination of our young inventors, some of the robots were modelled after science-fiction spacecrafts for example the NASA space shuttle, Droids and many more. **Ages 5-12.**

Location	Session	Camp Code
Fairlington CC	9	573065
Core Camp Hours:		9am-4pm
Extended Hours:		8-9am/4-6pm
Core Fee:		\$385
Extended Hour Fees:		\$40/\$80
Contact:	877.684.1260 or info@scigenius.com	

### SciGenius: Mission Moon Robotics (Half Day AM)

Building and programming futuristic robots is a great way to introduce physics and astronomy. In order to boost imagination of our young inventors, some of the robots were modelled after science-fiction spacecrafts for example the NASA space shuttle, Droids and many more. Campers will be grouped by age or skill level. **Ages 5-12.**

Location	Session	Camp Code
Fairlington CC	9	573066
Core Camp Hours:		9am-12pm
Extended Hours:		8-9am
Core Fee:		\$210
Extended Hour Fees:		\$40
Contact:	877.684.1260 or info@scigenius.com	

### SciGenius: Mission Moon Robotics (Half Day PM)

Building and programming futuristic robots is a great way to introduce physics and astronomy. In order to boost imagination of our young inventors, some of the robots were modelled after science-fiction spacecrafts for example the NASA space shuttle, Droids and many more. Campers will be grouped by age or skill level. **Ages 5-12.**

Location	Session	Camp Code
Fairlington CC	9	573067
Core Camp Hours:		1-4pm
Extended Hours:		4-6pm
Core Fee:		\$210
Extended Hour Fees:		\$80
Contact:	877.684.1260 or info@scigenius.com	

### SheEO Academy: Girl Boss

In this camp, SheEO Academy will introduce girls to famous female CEOs. Campers will create their own mission statement, vision board, job description and more to gain confidence to become future business leaders themselves. Bring a lunch, snack, drink and ideas. **Ages 7-12.**

Location	Sessions	Camp Code
Barcroft ES	2	573042
Fairlington CC	1,8	573042
Madison CC	9	573042
Core Camp Hours:		9am-4pm
Extended Hours:		3-6pm
Core Fee:		\$339
Extended Hour Fees:		\$99
Contact:	866.697.4336 or contact@sheeoacademy.com	

### SheEO Academy: She's the CEO (Half Day AM)

Is there a future CEO in your family? Imagine if your daughter learned the language of business today! In this virtual camp by SheEO Academy, she will gain confidence, life skills and be motivated to create and think big and know she can be a SheEO! **Ages 7-12.**

Location	Sessions	Camp Code
Virtual	1,4,8	573043
Core Camp Hours:		9-11am
Core Fee:		\$129
Contact:	866.697.4336 or contact@sheeoacademy.com	

### SheEO Academy: She's the CEO (Half Day PM)

Is there a future CEO in your family? Imagine if your daughter learned the language of business today! In this virtual camp by SheEO Academy, she will gain confidence, life skills and be motivated to create and think big and know she can be a SheEO! **Ages 7-12.**

Location	Sessions	Camp Code
Virtual	1,4,8	573044
Core Camp Hours:		1-3pm
Core Fee:		\$129
Contact:	866.697.4336 or contact@sheeoacademy.com	

### SheEO Academy: Girl Entrepreneur

Alina Morse founded Zollipops at 7. You can be a successful entrepreneur too! In this camp by SheEO Academy, your startup team will build a business plan and create a pitch. Bring a lunch, snack, drink and ideas. **Ages 7-12.**

Location	Sessions	Camp Code
Barcroft ES	5,6	573045
Glebe ES	7	573045
Core Camp Hours:		9am-4pm
Extended Hours:		3-6pm
Core Fee:		\$339
Extended Hour Fees:		\$99
Contact:	866.697.4336 or contact@sheeoacademy.com	

### Silver Knights Enrichment: Chess Camp

Play and learn chess with Silver Knights! We've taught 100,000+ children off all levels from absolute beginners to national champions! Chess lessons and practice games will be done throughout the day, along with breaks for fresh air. All campers receive a t-shirt and chess set. **Ages 6-13.**

Location	Sessions	Camp Code
Langston Brown CC	1,2,3,5,8	573046
Madison CC	9,10	573046
Williamsburg MS	6	573046
Glebe ES	7	573046
Core Camp Hours:		9am-4pm
Core Fee:		\$359
Fee/Session 3:		\$289
Contact:	703.574.2080	

### Silver Knights Enrichment: LEGO Robotics Camp: Wild Safari

Explore the animal kingdom in this WeDo 2.0 LEGO Robotics Camp where you will build and code swinging monkeys, fierce Silverback gorillas, cute Koalas and more

robots that climb, move, bite and roll! At the end of the week, campers receive a T-shirt. **Ages 6-13.**

Location	Sessions	Camp Code
Langston Brown CC	1	573047
Madison CC	9	573047
Core Camp Hours:		9am-4pm
Core Fee:		\$449
Contact:	703.574.2080	

### Silver Knights Enrichment: LEGO Robotics Camp: Bot vs. Bot

Take the WeDo 2.0 LEGO robot challenge with Silver Knights in this fun camp. Build and program Sumo wrestling bots, bots that play ball, and bots that compete in a demolition derby! At the end of the week, campers receive a T-shirt. **Ages 6-13.**

Location	Sessions	Camp Code
Langston Brown CC	2,5,8	573047
Madison CC	10	573047
Core Camp Hours:		9am-4pm
Core Fee:		\$449
Contact:	703.574.2081	

### Silver Knights Enrichment: LEGO Robotics Camp: Extreme Machines

Explore the world of mega-machines in this WeDo 2.0 LEGO Robotics camp. Build and program robots that get the job done! Build over-the-top vehicles and real-world engineering marvels in this fun camp! At the end of the week, campers receive a T-shirt. **Ages 6-13.**

Location	Sessions	Camp Code
Langston Brown CC	3	573047
Williamsburg MS	6	573047
Glebe ES	7	573047
Core Camp Hours:		9am-4pm
Core Fee:		\$449
Fee/Session 3:		\$359
Contact:	703.574.2082	

### Silver Knights Enrichment: Game Design: Mazes and Monsters

Learn to program your own maze games, platformers, and side scrolling games in Scratch! Silver Knights provides a laptop for every child. At the end of the week, each child receives a T-shirt and a USB with the programs they've made. No experience required. Level up! **Ages 7-13.**

Location	Sessions	Camp Code
Fairlington CC	2	573048
Core Camp Hours:		9am-4pm
Core Fee:		\$449
Contact:	703.574.2091	

### Silver Knights Enrichment: Digital Animation: Art and Adventure

Learn to animate your own adventure stories, quiz games, and visual art in Scratch. Silver Knights provides a laptop for every child. At the end of the week, each child receives a T-shirt and a USB with the programs they've made. No experience required. What's your story? **Ages 7-13.**

Location	Sessions	Camp Code
Fairlington CC	10	573049
Core Camp Hours:		9am-4pm
Core Fee:		\$449
Contact:	703.574.2092	



### Oops!

Made a mistake while registering for camps? Make sure you call the Main Registration Office by 5pm, Tues., March 30. We will waive the \$20 cancellation fee!





### SPARK Business Academy: My First Lemonade Stand

Join us for this fun program, where you learn how to make yummy lemonade and earn money selling it! Fun sessions empower campers with an entrepreneurial mindset for their lemonade stand. From designing marketing flyers to estimating profits to experimenting with recipes, campers have fun while developing business savvy. **Ages 6-9.**

Location	Session	Camp Code
<b>Madison CC</b>	<b>10</b>	<b>573072</b>
<b>Core Camp Hours:</b>		<b>9am-4pm</b>
<b>Extended Hours:</b>		<b>8-9am/4-5:30pm</b>
<b>Core Fee:</b>		<b>\$425</b>
<b>Extended Hour Fees:</b>		<b>\$75/\$105</b>
<b>Contact:</b> 703.371.3155 or chuchi.arevalo@sparkbusinessacademy.com		

### SPARK Business Academy: Young Debaters (Half Day PM)

Campers learn the art of persuasion and practice their debating skills in a supportive environment, including developing arguments, issuing rebuttals, providing examples, rebuilding their case and summarizing points of view. Campers learn to think on their feet and enhance their public-speaking skills, gaining self-confidence in the process. This camp can be paired with the FirstServe Tennis morning camps. **Ages 9-13.**

Location	Session	Camp Code
<b>Marcey Road Park</b>	<b>8</b>	<b>573073</b>
<b>Core Camp Hours:</b>		<b>12-4pm</b>
<b>Core Fee:</b>		<b>\$249</b>
<b>Contact:</b> 703.371.3161 or chuchi.arevalo@sparkbusinessacademy.com		

## SPORTS CAMPS

### Arlington Gymnastics: Full Day Summer Camp

Boys and girls enjoy gymnastics and movement activities in this full-day camp. Campers also participate in outdoor activities, water day, and crafts. Campers practice all artistic gymnastics women's and men's events, as well as trampoline. **Ages 6-9.**

Location	Sessions	Camp Code
<b>Barcroft Sports CC</b>	<b>1,2,3,4,5,6,7,8</b>	<b>542010</b>
<b>Core Camp Hours:</b>		<b>9am-3pm</b>
<b>Core Fee:</b>		<b>\$350</b>
<b>Fee/Session 3:</b>		<b>\$280</b>

### Arlington Gymnastics: Outdoor Summer Camp (Half Day AM)

Boys and girls enjoy outdoor gymnastics and movement activities in this half day camp. Campers also participate in playground activities, water day and crafts. Campers practice beginner-intermediate levels of modified gymnastics in women's and men's events. **Ages 5-8.**



Location	Sessions	Camp Code
<b>Barcroft Sports CC</b>	<b>1,2,3,4,5,6,7,8,9</b>	<b>(Select age)</b>
<b>Camp Code/Ages 5-6:</b>		<b>542011</b>
<b>Camp Code/Ages 7-8:</b>		<b>542012</b>
<b>Core Camp Hours:</b>		<b>9:30am-12:30pm</b>
<b>Core Fee:</b>		<b>\$197</b>
<b>Fee/Session 3:</b>		<b>\$157</b>

### Arlington Soccer: Full Day Summer Camp

Arlington Soccer Association Soccer Camps will provide age appropriate, enjoyable activities for boys and girls of all abilities. Activities will develop soccer skills, promote cooperation and teamwork, increase positional awareness and help all kids improve and enjoy soccer. All camps will include small-sided and larger-side games each day. **Ages 6-15.**

Location	Sessions	Camp Code
<b>Gunston CC</b>	<b>1,2,4</b>	<b>543033</b>
<b>Kenmore MS</b>	<b>5,6</b>	<b>543033</b>
<b>Williamsburg MS</b>	<b>7</b>	<b>543033</b>
<b>Core Camp Hours:</b>		<b>9am-4pm</b>
<b>Core Fee:</b>		<b>\$320</b>
<b>Contact:</b> 703.527.0157 or info@arlingtonsoccer.com		

### Arlington Soccer: Summer Camp (Half Day AM)

Arlington Soccer Association Soccer Camps will provide age appropriate, enjoyable activities for boys and girls of all abilities. Activities will develop soccer skills, promote cooperation and teamwork, increase positional awareness and help all kids improve and enjoy soccer. All camps will include small-sided and larger-side games each day. **Ages 6-15.**

Location	Sessions	Camp Code
<b>Gunston CC</b>	<b>1,2,4,8</b>	<b>543034</b>
<b>Kenmore MS</b>	<b>5,6,9</b>	<b>543035</b>
<b>Williamsburg MS</b>	<b>7,8,9,10</b>	<b>543036</b>
<b>Core Camp Hours:</b>		<b>9am-12pm</b>
<b>Core Fee:</b>		<b>\$215</b>
<b>Contact:</b> 703.527.0157 or info@arlingtonsoccer.com		

### Baroody Camps: Sports Camp

Play some of the best sports and PE games ever invented! We'll choose from knockout, extreme kickball, handball, capture the flag, modified dodgeball, ultimate frisbee, floor hockey, soccer and more. All games are modified to encourage distancing. Our goal is to motivate each player to compete with high effort and a positive attitude towards self and others. **Ages 6-12.**

Location	Sessions	Camp Code
<b>Bluemont Park</b>	<b>4,9,10</b>	<b>543041</b>
<b>Wakefield HS</b>	<b>5</b>	<b>543041</b>
<b>Core Camp Hours:</b>		<b>9am-3pm</b>
<b>Extended Hours:</b>		<b>7-9am/3-6pm</b>
<b>Core Fee:</b>		<b>\$250</b>
<b>Extended Hour Fees:</b>		<b>\$45/\$65</b>
<b>Contact:</b> 703.539.2602 or info@baroodycamps.com		

## SESSION / DATES

<b>1</b>	<b>JUNE 21 – JUNE 25</b>
<b>2</b>	<b>JUNE 28 – JULY 2</b>
<b>3</b>	<b>JULY 5 – JULY 9</b> <b>(NO CAMP JULY 5)</b>
<b>4</b>	<b>JULY 12 – JULY 16</b>
<b>5</b>	<b>JULY 19 – JULY 23</b>
<b>6</b>	<b>JULY 26 – JULY 30</b>
<b>7</b>	<b>AUG. 2 – AUG. 6</b>
<b>8</b>	<b>AUG. 9 – AUG. 13</b>
<b>9</b>	<b>AUG. 16 – AUG. 20</b>
<b>10</b>	<b>AUG. 23 – AUG. 27</b>

Learn more about  
Camps for All Abilities  
and how to access  
inclusion support  
services on Page 2



### Silver Knights Enrichment: Chess & LEGO Robotics Camp

Half a day of chess and half a day of LEGO Robotics! See chess camp and LEGO Robotics camp descriptions for details. **Ages 6-13.**

Location	Sessions	Camp Code
<b>Langston Brown CC</b>	<b>1,2,3,5,8</b>	<b>573050</b>
<b>Madison CC</b>	<b>10</b>	<b>573050</b>
<b>Williamsburg MS</b>	<b>6</b>	<b>573050</b>
<b>Core Camp Hours:</b>		<b>9am-4pm</b>
<b>Core Fee:</b>		<b>\$399</b>
<b>Fee/Session 3:</b>		<b>\$319</b>
<b>Contact:</b> 703.574.2096		

### SPARK Business Academy: Young Diplomats (Half Day PM)

This fun program helps campers develop a global mindset and build international awareness. Campers explore cultural differences across countries, geography games, famous landmarks, world currencies, current global events, and more. Campers role-play as diplomats and come up with solutions to key global problems like hunger, poverty and pollution. This camp can be paired with the FirstServe Tennis morning camps. **Ages 7-12.**

Location	Session	Camp Code
<b>Marcey Road Park</b>	<b>9</b>	<b>573075</b>
<b>Core Camp Hours:</b>		<b>12-4pm</b>
<b>Core Fee:</b>		<b>\$249</b>
<b>Contact:</b> 703.371.3162 or chuchi.arevalo@sparkbusinessacademy.com		

### SPARK Business Academy: Money Matters

Earn, save, spend, donate! Let's learn about money! This innovative program provides a solid foundation on financial literacy for kids in a fun setting. Games and hands-on activities help campers internalize key concepts (like money, budgeting and saving) in an engaging and supportive environment fostering teamwork. **Ages 6-9.**

Location	Session	Camp Code
<b>Williamsburg MS</b>	<b>5</b>	<b>573071</b>
<b>Core Camp Hours:</b>		<b>9am-4pm</b>
<b>Extended Hours:</b>		<b>8-9am/4-5:30pm</b>
<b>Core Fee:</b>		<b>\$425</b>
<b>Extended Hour Fees:</b>		<b>\$75/ \$105</b>
<b>Contact:</b> 703.371.3155 or chuchi.arevalo@sparkbusinessacademy.com		

### SPARK Business Academy: Money Matters (Half Day PM)

Earn, save, spend, donate! Let's learn about money! This innovative program provides a solid foundation on financial literacy for kids in a fun setting. Games and hands-on activities help campers internalize key concepts (like money, budgeting and saving) in an engaging and supportive environment fostering teamwork. This camp can be paired with the FirstServe Tennis morning camps. **Ages 7-12.**

Location	Session	Camp Code
<b>Marcey Road Park</b>	<b>7</b>	<b>573071</b>
<b>Core Camp Hours:</b>		<b>12-4pm</b>
<b>Core Fee:</b>		<b>\$249</b>
<b>Contact:</b> 703.371.3160 or chuchi.arevalo@sparkbusinessacademy.com		

### Looking for the Camp Guide by Category?

It's moved Online! Visit [parks.arlingtonva.us/programs/summer-camps/](https://parks.arlingtonva.us/programs/summer-camps/) to search all the camp listings by camp title, category, location, age, or start date! It's the fastest and easiest way to find the camp option that's best for you.





### Baroody Camps: Floor Hockey Camp (Half Day AM)

Floor hockey is an action packed game where kids move constantly. Campers will learn the basics of hockey in a safe environment and how to compete as a team with high effort and sportsmanship. Each class will begin with lead-up games and skill building and finish with full games! **Ages 6-12.**

Location	Sessions	Camp Code
Quincy Parking Deck	1, 2, 9, 10	<b>543039</b>
<b>Core Camp Hours:</b>		<b>9am-12pm</b>
<b>Extended Hours:</b>		<b>7-9am</b>
<b>Core Fee:</b>		<b>\$150</b>
<b>Extended Hour Fees:</b>		<b>\$45</b>
<b>Contact:</b>	703.539.2602 or info@baroodycamps.com	

### Baroody Camps: Floor Hockey Camp (Half Day PM)

Floor hockey is an action packed game where kids move constantly. Campers will learn the basics of hockey in a safe environment and how to compete as a team with high effort and sportsmanship. Each class will begin with lead-up games and skill building and finish with full games! **Ages 6-12.**

Location	Sessions	Camp Code
Quincy Parking Deck	1, 2, 9, 10	<b>543056</b>
<b>Core Camp Hours:</b>		<b>1-4pm</b>
<b>Extended Hours:</b>		<b>4-6pm</b>
<b>Core Fee:</b>		<b>\$150</b>
<b>Extended Hour Fees:</b>		<b>\$65</b>
<b>Contact:</b>	703.539.2602 or info@baroodycamps.com	

### Baroody Camps: Pickleball Camp (Half Day AM)

Pickleball is a fun, fast-paced paddle sport that combines tennis, table tennis and badminton. Kids will learn the rules of the game, the basics and will practice their skills through games. Children will work together as a team while competing in fun, lightly competitive tournament style matches. This is a great game that can be played while distancing! **Ages 7-12.**

Location	Session	Camp Code
Dorothy Hamm MS	3	<b>543040</b>
Discovery ES	8	<b>543040</b>
<b>Core Camp Hours:</b>		<b>9am-12pm</b>
<b>Extended Hours:</b>		<b>7-9am</b>
<b>Core Fee:</b>		<b>\$150</b>
<b>Extended Hour Fees:</b>		<b>\$45</b>
<b>Contact:</b>	703.539.2602 or info@baroodycamps.com	

### Baroody Camps: Pickleball Camp (Half Day PM)

Pickleball is a fun, fast-paced paddle sport that combines tennis, table tennis and badminton. Kids will learn the rules of the game, the basics and will practice their skills through games. Children will work together as a team while competing in fun, lightly competitive tournament style matches. This is a great game that can be played while distancing! **Ages 7-12.**

Location	Session	Camp Code
Dorothy Hamm MS	3	<b>543057</b>
Discovery ES	8	<b>543057</b>
<b>Core Camp Hours:</b>		<b>1-4pm</b>
<b>Extended Hours:</b>		<b>4-6pm</b>
<b>Core Fee:</b>		<b>\$150</b>
<b>Extended Hour Fees:</b>		<b>\$65</b>
<b>Contact:</b>	703.539.2602 or info@baroodycamps.com	

### Baroody Camps: Dance Camp

Campers are going to love this full day dance camp where instructors teach choreography and movement using some of the most popular songs out today. Arts & crafts will be incorporated as campers decorate props and shirts. Campers will show off their new dance moves on the final day of camp. **Ages 7-11.**

Location	Session	Camp Code
Dorothy Hamm MS	1	<b>543038</b>
Wakefield HS	5	<b>543038</b>
Gunston CC	6	<b>543038</b>
<b>Core Camp Hours:</b>		<b>9am-3pm</b>
<b>Extended Hours:</b>		<b>7-9am/3-6pm</b>
<b>Core Fee:</b>		<b>\$250</b>
<b>Extended Hour Fees:</b>		<b>\$45/\$65</b>
<b>Contact:</b>	703.539.2602 or info@baroodycamps.com	

### Capital Ultimate Camp: Middle School Day Camp

Campers will be introduced to Ultimate Frisbee using a variety of lead up games and drills. They will work on developing throwing, catching, and marking skills and will be introduced to fundamental Ultimate tactics that will prepare them for Middle School Competition. **Ages 11-14.**

Location	Session	Camp Code
Gunston CC	5	<b>543017</b>
Bluemont Park	7	<b>543017</b>
<b>Core Camp Hours:</b>		<b>9am-3:30pm</b>
<b>Extended Hours:</b>		<b>7-9am/3:30-6pm</b>
<b>Core Fee:</b>		<b>\$300</b>
<b>Extended Hour Fees:</b>		<b>\$25/\$25</b>
<b>Contact:</b>	703.473.6920 or will.smolinski@gmail.com	

### Capital Ultimate Camp: Elementary School Day Camp

Campers will enjoy their days learning basic Frisbee skills, conflict resolution, and self officiation. Campers should expect LOTS of different lead up games that involve frisbees, but mainly focus on 'joy of play' and growth mindset. **Ages 9-11.**

Location	Session	Camp Code
Yorktown HS	4	<b>543016</b>
<b>Core Camp Hours:</b>		<b>9am-3:30pm</b>
<b>Extended Hours:</b>		<b>7-9am/3:30-6pm</b>
<b>Core Fee:</b>		<b>\$300</b>
<b>Extended Hour Fees:</b>		<b>\$25/\$50</b>
<b>Contact:</b>	703.473.6920 or will.smolinski@gmail.com	

### FirstServe Tennis: Fun & Fundamentals (Half Day AM)

Through fun skill-building games beginners and advanced beginners learn the fundamental strokes; forehand, backhand, volleys, overhead and serve. This camp can be paired with the SPARK Business Academy afternoon camps during some sessions. **Ages 7-10.**

Location	Sessions	Camp Code
Yorktown HS	1, 2, 4, 5, 6	<b>543037</b>
Marcey Road Park	7, 8, 9, 10	<b>543037</b>
<b>Core Camp Hours:</b>		<b>9am-12pm</b>
<b>Extended Hours:</b>		<b>8:30-9am</b>
<b>Core Fee:</b>		<b>\$399</b>
<b>Extended Hour Fees:</b>		<b>\$35</b>
<b>Contact:</b>	703.868.8172 or info@tenniseveryone.net	

### Golden Boot Soccer: Ball Mastery

Perhaps your child finished a younger introductory program. Or maybe they are older, but newly interested in soccer. We provide a "bridge" to more advanced play by developing and refining basic skills such as 'ball mastery', first touch, and dribbling. Help your player prepare for the next step with confidence! **Ages 7-8.**

Location	Session	Camp Code
Washington-Liberty HS	5	<b>543029</b>
Gunston CC	7	<b>543029</b>
<b>Core Camp Hours:</b>		<b>9am-4pm</b>
<b>Extended Hours:</b>		<b>7:30-9am/4-6pm</b>
<b>Core Fee:</b>		<b>\$375</b>
<b>Extended Hour Fees:</b>		<b>\$45/\$50</b>
<b>Contact:</b>	703.287.0088 or info@goldenbootsoccer.com	

### Golden Boot Soccer: Art of Scoring Goals

Players will develop strategic and technical skills through a variety of finishing activities, including brain-body cognitive training. They'll learn to get into scoring position, improve overall shooting and finishing techniques, enhance power and accuracy of shots, dissect goalkeepers' vulnerabilities, and more. A valuable camp for all players, not just forwards. **Ages 9-14.**

Location	Session	Camp Code
Washington-Liberty HS	5	<b>543027</b>
<b>Core Camp Hours:</b>		<b>9am-4pm</b>
<b>Extended Hours:</b>		<b>7:30-9am/4-6pm</b>
<b>Core Fee:</b>		<b>\$375</b>
<b>Extended Hour Fees:</b>		<b>\$45/\$50</b>
<b>Contact:</b>	703.287.0088 or info@goldenbootsoccer.com	

### Golden Boot Soccer: Positive Touch Footskills

The program focuses on individual technical skills to improve touch on the ball by developing ball mastery, dribbling, quick feet, moves, feints, 1v1 skills and more. Through innovative cognitive training techniques and engaging activities, players will develop their finesse and "soccer IQ" to become more crafty, imaginative, creative, and confident. **Ages 9-14.**

Location	Sessions	Camp Code
Gunston CC	7	<b>543030</b>
<b>Core Camp Hours:</b>		<b>9am-4pm</b>
<b>Extended Hours:</b>		<b>7:30-9am/4-6pm</b>
<b>Core Fee:</b>		<b>\$350</b>
<b>Extended Hour Fees:</b>		<b>\$45/\$50</b>
<b>Contact:</b>	703.287.0088 or info@goldenbootsoccer.com	

### Golden Boot Soccer: Lil' Boots Advanced

An active, age-appropriate, fun introduction to soccer for school-aged players. Campers will learn basic skills through creative activities and challenges, plus explore the concept of team play in a positive, supportive way. They will develop physical skills like coordination and balance, plus important cognitive skills like listening, communication, and problem-solving. **Ages 5-6.**

Location	Session	Camp Code
Washington-Liberty HS	5	<b>543028</b>
Gunston CC	7	<b>543028</b>
<b>Core Camp Hours:</b>		<b>9:30-10:30am</b>
<b>Core Fee:</b>		<b>\$150</b>
<b>Contact:</b>	703.287.0088 or info@goldenbootsoccer.com	

### Love the Ball Soccer: Soccer Camp

Love the Ball soccer camps' goal is for children to have memorable, positive experiences through soccer, a week filled with happiness & enjoyment, promoting self-confidence. Teamwork and co-operation will be encouraged as players learn new daily moves as part of our "1000 touch curriculum" to implement into small sided scrimmages. **Ages 5-14.**

Location	Sessions	Camp Code
Wakefield HS	1	<b>543031</b>
Kenmore MS	2, 8	<b>543031</b>
Barcroft Park	5, 10	<b>543031</b>
Bluemont Park	6	<b>543031</b>
Gunston CC	9	<b>543031</b>
<b>Core Camp Hours:</b>		<b>9am-4pm</b>
<b>Extended Hours:</b>		<b>8-9am/4-6pm</b>
<b>Core Fee:</b>		<b>\$260</b>
<b>Extended Hour Fees:</b>		<b>\$50/\$80</b>
<b>Contact:</b>	202.215.8676 or lovetheballusa@gmail.com	





Love the Ball Soccer:  
Soccer Camp (Half Day AM)

Love the Ball soccer camps' goal is for children to have memorable, positive experiences through soccer, a week filled with happiness & enjoyment, promoting self-confidence. Teamwork and co-operation will be encouraged as players learn new daily moves as part of our "1000 touch curriculum" to implement into small sided scrimmages. **Ages 3-14.**

Location	Sessions	Camp Code
Wakefield HS	1	543032
Kenmore MS	2, 8	543032
Barcroft Park	5, 10	543032
Bluemont Park	6	543032
Gunston CC	9	543032
Core Camp Hours:	9am-12pm	
Extended Hours:	8-9am	
Core Fee:	\$190	
Extended Hour Fees:	\$50	
Contact:	202.215.8676 or lovetheballusa@gmail.com	

Momentum3: SporTECH

Design It—Create It—Build It—Race It! Technology & Sports come together to create SporTECH—exercising the mind and body! SporTECH offers a balance of mental stimulation and physical challenge each day. Participants will create unique projects created with real programming languages/multi-media software and 3D printing, while receiving top notch all sports instruction. **Ages 11-14.**

Location	Sessions	Camp Code
Swanson MS	4, 5	543026
Core Camp Hours:	9am-3pm	
Extended Hours:	8-9am/3-6pm	
Core Fee:	\$300	
Extended Hour Fees:	\$50/\$75	
Contact:	703.980.0335 or summer@momentum-3.com	

Momentum3:  
Arlington Cheer Camp

Arlington's best introductory cheer camp is back—no experience is needed. Campers learn basic motion technique, cheers, and chants both with and without music. Our expert coaches focus on the FUN of learning new routines. Each week campers learn a dance routine, jumps, flexibility, and more incorporating all these skills into a final performance on Friday. **Ages 6-12.**

Location	Session	Camp Code
Williamsburg MS	1	543019
Wakefield HS	4	543019
Core Camp Hours:	9am-3pm	
Extended Hours:	8-9am/3-6pm	
Core Fee:	\$235	
Extended Hour Fees:	\$50/\$75	
Contact:	703.980.0335 or summer@momentum-3.com	

Momentum3: Flag Football

Protect Your Flag! Our high energy non-contact flag football camp is dedicated to teaching and developing football skills and knowledge in a fun and supportive environment. Experienced coaches cover all fundamentals: catching, passing, strategies and defense. Campers rotate through skill positions: quarterback, running back, receiver, line-backer and defensive back through drills, games and competitions. **Ages 6-13.**

Location	Session	Camp Code
Williamsburg MS	1	543024
Wakefield HS	4	543024
Core Camp Hours:	9am-3pm	
Extended Hours:	8-9am/3-6pm	
Core Fee:	\$235	
Extended Hour Fees:	\$50/\$75	
Contact:	703.980.0335 or summer@momentum-3.com	

Momentum3:  
Chummy Gill Basketball/Girls

Dribble. Pass. Shoot. Our signature player development methodology covers all areas of basketball skills: shooting, passing, dribbling, rebounding, defense and offensive development all within a team setting. Over the course of the week campers' self-confidence will grow along with their skills and appreciation of the game. This session is girls only. **Ages 6-13.**

Location	Sessions	Camp Code
Kenmore MS	3	543020
Core Camp Hours:	9am-3pm	
Extended Hours:	8-9am/3-6pm	
Core Fee:	\$235	
Extended Hour Fees:	\$50/\$75	
Contact:	703.980.0335 or summer@momentum-3.com	

Momentum3:  
Chummy Gill Basketball/Co-ed

Dribble. Pass. Shoot. Our signature player development methodology covers all areas of basketball skills: shooting, passing, dribbling, rebounding, defense and offensive development all within a team setting. Over the course of the week campers' self-confidence will grow along with their skills and appreciation of the game. **Ages 6-13.**

Location	Session	Camp Code
Kenmore MS	7	543021
High View Park	10	543021

Core Camp Hours:	9am-3pm
Extended Hours:	8-9am/3-6pm
Core Fee:	\$235
Extended Hour Fees:	\$50/\$75
Contact:	703.980.0335 or summer@momentum-3.com

Momentum3:  
Chummy Gill Basketball  
(Half-Day AM)

Dribble. Pass. Shoot. Our signature player development methodology covers all areas of basketball skills: shooting, passing, dribbling, rebounding, defense and offensive development all within a team setting. Over the course of the week campers' self-confidence will grow along with their skills and appreciation of the game. **Ages 6-13.**

Location	Session	Camp Code
High View Park	10	543022
Core Camp Hours:	9am-12pm	
Core Fee:	\$120	
Contact:	703.980.0335 or summer@momentum-3.com	

Momentum3:  
Chummy Gill Basketball  
(Half-Day PM)

Dribble. Pass. Shoot. Our signature player development methodology covers all areas of basketball skills: shooting, passing, dribbling, rebounding, defense and offensive development all within a team setting. Over the course of the week campers' self-confidence will grow along with their skills and appreciation of the game. **Ages 6-13.**

Location	Session	Camp Code
High View Park	10	543023
Core Camp Hours:	1-4pm	
Core Fee:	\$120	
Contact:	703.980.0335 or summer@momentum-3.com	

Momentum3:  
TriplePlay Sports

3-Field Sports In-1! In our TriplePlay Sports Camp, athletes have the opportunity to play soccer, lacrosse, and flag-football in one fun filled week! Triple-Play is designed to teach the fundamentals through a range of physical activities, drills, and games. This camp is delivered in a low pressure, high energy environment, allowing each athlete to excel. **Ages 6-13.**

Location	Sessions	Camp Code
Kenmore MS	3, 7	543025
Core Camp Hours:	9am-3pm	
Extended Hours:	8-9am/3-6pm	
Core Fee:	\$235	
Extended Hour Fees:	\$50/\$75	
Contact:	703.980.0335 or summer@momentum-3.com	

Nova Fencing & Archery Club:  
Fencing Camp

En Garde! Ready? Fence! We teach fencing using fun games and drills. Our campers learn basic footwork and bladework skills from experienced coaches and several current Junior Olympians. Camp includes team fencing tournaments with electrical scoring. Hear the noise, and see the lights every time a touch is made! No experience necessary, all equipment is provided. **Ages 7-14.**

Location	Sessions	Camp Code
Nova Fencing	3, 4, 7	543043

SESSION / DATES

- 1 JUNE 21 – JUNE 25
- 2 JUNE 28 – JULY 2
- 3 JULY 5 – JULY 9  
(NO CAMP JULY 5)
- 4 JULY 12 – JULY 16
- 5 JULY 19 – JULY 23
- 6 JULY 26 – JULY 30
- 7 AUG. 2 – AUG. 6
- 8 AUG. 9 – AUG. 13
- 9 AUG. 16 – AUG. 20
- 10 AUG. 23 – AUG. 27







**Core Camp Hours:** 9am-4pm  
**Core Fee:** \$360  
**Fee/Session 3:** \$288  
**Contact:** 703.999.8077 or donna@novafencingclub.com

### Nova Fencing & Archery Club: Battle Camp

Learn two great Olympic sports at one fun camp. Split your time between Archery, Fencing and traditional camp fun and games. At the end of week we wrap up with a fencing and archery Robin Hood Team Tournament. No experience needed and all equipment is provided. **Ages 8-14.**

Location	Sessions	Camp Code
<b>Nova Fencing</b>	1, 2, 5, 6, 8, 9, 10	<b>543042</b>
<b>Core Camp Hours:</b>		9am-4pm
<b>Core Fee:</b>		\$360
<b>Contact:</b>	703.999.8077 or donna@novafencingclub.com	

### One on One Basketball: Competitive Esports (Half Day PM)

Get your teenagers out of the house and involved in competitive gaming. Campers will compete playing today's most popular Esports games such as NBA2K, FIFA, Madden, MLB and others. Not for beginners. **Ages 10-16.**

Location	Session	Camp Code
<b>Langston Brown CC</b>	10	<b>543018</b>
<b>Core Camp Hours:</b>		12-3pm
<b>Core Fee:</b>		\$175
<b>Contact:</b>	202.431.9650 or henry@ton1basketball.com	



### One on One Basketball: Basketball & Sports Camp

This Camp provides children of all ability levels the opportunity to improve their skills and learn new ones. The camp will work on basketball each day but will feature another sport to play and have fun. Campers will also participate in soccer, kickball, flag football, capture the flag, and handball. Team concepts and sportsmanship will be emphasized. **Ages 6-14.**

Location	Session	Camp Code
<b>Swanson MS</b>	1	<b>543018</b>
<b>Core Camp Hours:</b>		9am-3pm
<b>Extended Hours:</b>		8-9am/3-5pm
<b>Core Fee:</b>		\$265
<b>Extended Hour Fees:</b>		\$40/\$80
<b>Contact:</b>	202.431.9650 or henry@ton1basketball.com	

### One on One Basketball: Basketball/Flag Football Camp

Campers will participate in a half day of both basketball and flag football. They will work on fundamentals with fun drills and contests before playing regular games. In flag football, campers will work on skills by position while all basketball players will work on proper shooting form, passing, ball handling moves, rebounding, and defense. **Ages 6-14.**

Location	Session	Camp Code
<b>Wakefield HS</b>	6	<b>543018</b>
<b>Core Camp Hours:</b>		9am-3pm
<b>Extended Hours:</b>		8-9am/3-5pm
<b>Core Fee:</b>		\$265
<b>Extended Hour Fees:</b>		\$40/\$80
<b>Contact:</b>	202.431.9650 or henry@ton1basketball.com	

### One on One Basketball: Basketball Camp

Have fun while learning to grow basketball skills. Camp will emphasize skill development through teaching of contemporary basketball fundamentals. Campers will be able to improve basic skills, develop new skills, and apply these to both individual and team situations. Areas covered

include shooting, passing, ball handling moves, rebounding, proper shooting form, and defense. **Ages 6-14.**

Location	Session	Camp Code
<b>Virginia Highlands Park</b>	8	<b>543018</b>
<b>Core Camp Hours:</b>		9am-3pm
<b>Extended Hours:</b>		8-9am/3-5pm
<b>Core Fee:</b>		\$250
<b>Extended Hour Fees:</b>		\$40/\$80
<b>Contact:</b>	202.431.9650 or renee@ton1basketball.com	

### One on One Basketball: Esports & Sports Camp

A unique camp combining physical activity with an opportunity to play some of the most popular Esports games. Spend half the day developing on-court skills in basketball, soccer, handball and capture-the-flag, with emphasis on teamwork and sportsmanship. The other half is spent in the Esports lab improving gaming techniques and strategy using NBA2K, Madden, FIFA, NHL and more. We'll put our skills to the test with Championship Friday! **Ages 8-14.**

Location	Sessions	Camp Code
<b>Williamsburg MS</b>	3, 7	<b>543018</b>
<b>Langston Brown CC</b>	9	<b>543018</b>
<b>Core Camp Hours:</b>		9am-3pm
<b>Extended Hours:</b>		8-9am/3-5pm
<b>Core Fee:</b>		\$325
<b>Extended Hour Fees:</b>		\$40/\$80
<b>Contact:</b>	202.431.9650 or henry@ton1basketball.com	

### Orangeline Sports: Boys Elite Basketball Camp

Elite Camp is for players who want to compete at the next level. Elite Camp is designed to help athletes learn and perform the more advanced basketball skills needed to succeed on their CYO, AAU, middle school, and high school teams. Counselors include both players and coaches at the collegiate level. **Ages 11-16.**

Location	Session	Camp Code
<b>Washington Liberty HS</b>	2	<b>543045</b>
<b>Yorktown HS</b>	5	<b>543045</b>
<b>Core Camp Hours:</b>		9am-3pm
<b>Extended Hours:</b>		7-9am/3-5pm
<b>Core Fee/2 Sessions:</b>		\$250
<b>Extended Hour Fees:</b>		\$50/\$50
<b>Contact:</b>	orangelinesports@gmail.com	

### Orangeline Sports: Co-ed Basketball Camp

This camp will teach student athletes the skills needed to succeed in life through the fundamentals of basketball. Campers will develop teamwork, communication, time management and integrity. Players will participate in skill development stations, games, contests, lectures, individual and team competitions. Counselors include both male and female collegiate and high school players. **Ages 7-13.**

Location	Session	Camp Code
<b>Washington Liberty HS</b>	1	<b>543044</b>
<b>Yorktown HS</b>	6	<b>543044</b>
<b>Core Camp Hours:</b>		9am-3pm
<b>Extended Hours:</b>		7-9am/3-5pm
<b>Core Fee/2 Sessions:</b>		\$250
<b>Extended Hour Fees:</b>		\$50/\$50
<b>Contact:</b>	orangelinesports@gmail.com	

### Orangeline Sports: Girls Basketball Camp

This camp is for players who want to improve their basketball skills and IQ through fun yet challenging drills and activities. Campers will learn skills needed to succeed in life through the fundamentals of basketball—teamwork, communication, time management and integrity. Players will participate in skill development stations, games, contests, lectures, individual and team competitions. **Ages 7-13.**

Location	Sessions	Camp Code
<b>Yorktown HS</b>	5	<b>543046</b>
<b>Core Camp Hours:</b>		9am-3pm
<b>Extended Hours:</b>		7-9am/3-5pm
<b>Core Fee:</b>		\$225
<b>Extended Hour Fees:</b>		\$50/\$50
<b>Contact:</b>	orangelinesports@gmail.com	

### Patriot Girls Basketball: Girls Basketball Camp

Campers will develop fundamental basketball skills under the direction of former Yorktown varsity girls basketball coach Kip Davis. The camp will provide a positive environment for girls to improve and expand their basketball skills. The session includes skills, clinics, games, tournaments, intramurals, etc. **Ages 6-14.**

Location	Sessions	Camp Code
<b>Yorktown HS</b>	1	<b>543047</b>
<b>Swanson MS</b>	2, 8	<b>543047</b>
<b>Core Camp Hours:</b>		9am-3pm
<b>Extended Hours:</b>		7-9am/3-5pm
<b>Core Fee:</b>		\$200
<b>Extended Hour Fees:</b>		\$30/\$30
<b>Contact:</b>	703.509.1605 or ozarkzeke@gmail.com	

### Sportzcampz4kidz: Shooting Stars Sports Camp

Our 22nd year of offering fun camp programs. Campers will get a kick out of this FUN filled sports camp. The main emphasis is on having FUN and developing skills in a fun environment. All campers will participate in a variety of sports such as soccer, basketball, whiffleball & floor hockey. **Ages 5-10.**

Location	Sessions	Camp Code
<b>Williamsburg MS</b>	4, 5	<b>543051</b>
<b>Gunston CC</b>	10	<b>543051</b>
<b>Core Camp Hours:</b>		9am-3pm
<b>Extended Hours:</b>		7-9am/3-6pm
<b>Core Fee:</b>		\$200
<b>Extended Hour Fees:</b>		\$25/\$35
<b>Contact:</b>	703.998.8123 or aasc6420@cox.net	

### Sportzcampz4kidz: NOVA Basketball Camp

Our 22nd year of offering fun camp experiences. Campers will learn the fundamentals of basketball in a fun environment. Each day campers will participate in skill development, lead-up games and activities. Smaller basketballs will be used and basket heights will be adjusted to satisfy the abilities of the campers. **Ages 5-8.**

Location	Sessions	Camp Code
<b>Discovery ES</b>	2, 6	<b>543050</b>
<b>Dorothy Hamm MS</b>	7	<b>543050</b>
<b>Core Camp Hours:</b>		9am-3pm
<b>Extended Hours:</b>		7-9am/3-6pm
<b>Core Fee:</b>		\$200
<b>Extended Hour Fees:</b>		\$25/\$35
<b>Contact:</b>	703.998.8123 or aasc6420@cox.net	

### Sportzcampz4kidz: All American Sports Camp

This sports camp is ideal for children who want to have fun and play while being exposed to a variety of sports. Campers will participate in basketball, soccer, flag football, whiffleball, and volleyball as well as other sports-related activities. Campers will be grouped according to age or ability to ensure maximum learning and skill development. **Ages 6-12.**

Location	Sessions	Camp Code
<b>Kenmore MS</b>	1	<b>543048</b>
<b>Swanson MS</b>	3, 7	<b>543048</b>
<b>Bluemont Park</b>	8	<b>543048</b>
<b>Carver CC</b>	9	<b>543048</b>
<b>Core Camp Hours:</b>		9am-3pm
<b>Extended Hours:</b>		7-9am/3-6pm
<b>Core Fee:</b>		\$200
<b>Fee/Session 3:</b>		\$180
<b>Extended Hour Fees:</b>		\$25/\$35
<b>Extended Hour Fees/Session 3:</b>		\$20/\$28
<b>Contact:</b>	703.998.8123 or aasc6420@cox.net	

### Sportzcampz4kidz: Arlington Football Camp

Arlington Youth Football Camp is a FUN non-contact flag football camp designed to improve a child's beginning, intermediate or advanced skill level. The fundamentals of all positions will be taught in addition to life skills such as teamwork, sportsmanship and the importance of education. Skill instruction, lead up activities and flag football games all take place at the camp. **Ages 6-12.**

Location	Sessions	Camp Code
<b>Williamsburg MS</b>	2, 3, 5	<b>543049</b>
<b>Core Camp Hours:</b>		9am-3pm
<b>Extended Hours:</b>		7-9am/3-6pm
<b>Core Fee:</b>		\$200
<b>Fee/Session 3:</b>		\$180
<b>Extended Hour Fees:</b>		\$25/\$35
<b>Extended Hour Fees/Session 3:</b>		\$20/\$28
<b>Contact:</b>	703.998.8123 or aasc6420@cox.net	

### Sportzcampz4kidz: Youth Lacrosse Camp

This lacrosse camp is ideal for all children who want to have fun and play. We'll focus on the skills, drills and game play for beginner and intermediate level players



lacrosse. Each player should have their own stick and helmet and will be grouped according to age or ability to ensure maximum learning and skill development. **Ages 6-12.**

Location	Sessions	Camp Code
Greenbrier Park	2	543053
Washington-Liberty HS	6	543053
Core Camp Hours:	9am-3pm	
Extended Hours:	7-9am/3-6pm	
Core Fee:	\$200	
Extended Hour Fees:	\$25/\$35	
Contact:	703.998.8123 or aasc6420@cox.net	

### Sportzcampz4kidz: Warriors Basketball Camp

Campers will learn the fundamentals of basketball in a fun environment. Each day campers will participate in skill development, lead-up games, competitions and games. The purpose of the camp is to provide fun-filled weeks of basketball, teaching offensive skills, defensive techniques and individual play within the framework of a team concept. **Ages 8-14.**

Location	Sessions	Camp Code
Kenmore MS	1	543052
Dorothy Hamm MS	2,6	543052
Core Camp Hours:	9am-3pm	
Extended Hours:	7-9am/3-6pm	
Core Fee:	\$200	
Extended Hour Fees:	\$25/\$35	
Contact:	703.998.8123 or aasc6420@cox.net	

### Tennis Central: Spartans Plus

Through a variety of hand-eye coordination activities and targeted ball control and footwork exercises, each young player accelerates his/her tennis learning curve in a fun environment. The Spartan Plus program is designed to ramp up their tennis IQ, technical skills, ball control, efficiency, and further increase a strong affection for the game and inspiration to improve.. **Ages 6-9.**

Location	Sessions	Camp Code
Virginia Highlands Park	1,2,4,6	543054
Bluemont Park	3,5,7,8,9,10	543054
Core Camp Hours:	8:30am-3pm	
Core Fee:	\$399	
Contact:	240.586.2374 or alexis@tenniscentral.net	

### Tennis Central: Titans Training

Designed to accelerate a player's learning curve and to prepare them for competition, this camp covers everything from technique to strategy, and mental acuity to fitness. The goal is to turn each camper into a player who is as comfortable at the baseline, in the middle of the court, and at the net. **Ages 9-12.**

Location	Sessions	Camp Code
Virginia Highlands Park	1,2,4,6	543055
Bluemont Park	3,5,7,8,9,10	543055
Core Camp Hours:	8:30am-3pm	
Core Fee:	\$399	
Contact:	240.586.2374 or alexis@tenniscentral.net	



### Virginia Baseball Club: Baseball Beginners Camp (Half Day AM)

Fun skill development includes hitting, base running, fielding, throwing and catching. Group interaction, cooperation and team play emphasized. Games held each day along with enjoyable, well-structured learning experiences for beginner skill levels. The curriculum is designed for "max touch", providing plenty of repetitions. T-ball and coach-pitch scrimmage games are held each day. **Ages 5-6.**

Location	Sessions	Camp Code
Greenbrier Park	1,2,4,5	543060
Core Camp Hours:	9am-12pm	
Core Fee:	\$175	
Contact:	questions@virginiabaseballclub.com	

### Virginia Baseball Club: Overall Baseball Skills and Game Camp

Diamonds are a kid's best friend...baseball diamonds that is! This popular camp, held in Arlington since 1992, is ideal for players who love America's favorite pastime. The curriculum is designed for "max touch", providing plenty of repetitions. Coach-pitch scrimmage games are held each day. The camp offers an excellent baseball environment with multiple fields. **Ages 7-12.**

Location	Sessions	Camp Code
Greenbrier Park	1,2,3,4,5	543061
Core Camp Hours:	9am-2pm	
Extended Hours:	8am-9am/2-5pm	
Core Fee:	\$285	
Extended Hour Fees:	\$50/\$100	
Contact:	questions@virginiabaseballclub.com	

### NATURE, ADVENTURE, & HISTORY

#### Ancient Animal Explorers! (Half Day AM)

Delve into a world of ancient animals. We'll explore the small life from the Devonian oceans to the giant beasts of the Jurassic! We'll dig for discoveries, fossick for fossils in the creek, stomp like giant dinosaurs, meet animals that coexisted with dinosaurs and get creative with cretaceous crafts. Session contents repeat, participants should only register for one session. **Ages 5-6.**

Location	Sessions	Camp Code
Long Branch Nature Center	3,4	530012
Core Camp Hours:	9am-12:30pm	
Fee/Session 3 (No camp July 5th):	\$153	
Fee/Session 4:	\$191	

#### Ecosystem Investigators

What is an ecosystem? Answer: The interactions between the living and non-living parts of the environment. Campers will learn about connections between animals and plants as well as the energy flow from water and minerals through activities, hikes, observations and games. We'll become our own environmental scientists! **Ages 9-11.**

Location	Session	Camp Code
Long Branch Nature Center	5	530012
Core Camp Hours:	9am-2:30pm	
Core Fee:	\$275	

#### Outdoor Survival Skills

Do you have what it takes to survive in the great outdoors? Join us for an exciting week of camp as we learn some amazing outdoor survival skills such as shelter building, knot tying, fire building, fishing, tracking, and even trap construction! **Ages 11-14.**

Location	Session	Camp Code
Long Branch Nature Center	6	530012
Core Camp Hours:	9am-2:30pm	
Core Fee:	\$275	

#### Critter Kingdoms (Half Day AM)

Hang out with the slimy, the scaly, the creepy, the furry and the feathered this summer! Campers will get close up and personal with all types of critters and explore their habitats throughout Glencarlyn Park. We'll learn about these local animals through activities, games and take-home crafts. Session contents repeat, participants should only register for one session. **Ages 7-9.**

Location	Sessions	Camp Code
Long Branch Nature Center	7,8	530012
Core Camp Hours:	9am-12:30pm	
Core Fee:	\$191	

#### A Soldier's Life Camp

Our camper recruits will design a fort, use signal flags, practice their infantry drills and learn about Civil War tactics. We'll also go on long marches and experience camp life. If they're lucky, they'll have some time to relax in camp and play a few Civil War era games. **Ages 10-12.**

Location	Session	Camp Code
Fort C.F. Smith Park	6	530010
Core Camp Hours:	9am-2pm	
Core Fee:	\$272	

#### SESSION / DATES

- 1 JUNE 21 – JUNE 25
- 2 JUNE 28 – JULY 2
- 3 JULY 5 – JULY 9  
(NO CAMP JULY 5)
- 4 JULY 12 – JULY 16
- 5 JULY 19 – JULY 23
- 6 JULY 26 – JULY 30
- 7 AUG. 2 – AUG. 6
- 8 AUG. 9 – AUG. 13
- 9 AUG. 16 – AUG. 20
- 10 AUG. 23 – AUG. 27

Learn more about  
Camps for All Abilities  
and how to access  
inclusion support  
services on Page 2



#### Oops!

Made a mistake while  
registering for camps?  
Make sure you call the  
Main Registration Office  
by 5pm, Tues., March 30.  
We will waive the \$20  
cancellation fee!



COUNTY ONLINE  
REGISTRATION  
BEGINS AT 7AM

MAR 24!  
2021

### A Spy's Life

Virginia was a haven for would-be spies during the Civil War. Our campers will learn about the real people who spied for the armies and use their tricks and tools in daily missions and games. Campers have a week to build a cover story, identify important secrets and relay the information, all while avoiding capture. **Ages 10-12.**

Location	Sessions	Camp Code
Fort C.F. Smith Park	1,9	530010
Core Camp Hours:		9am-2pm
Core Fee:		\$272

### Civil War Solider Camp (Half Day AM)

No slouching in this camp! Our young enlistees will learn to march and drill like a well-trained infantry unit. They'll learn how to quickly load artillery and how to build forts to protect the city. They'll also spend some quiet time setting up camp, cooking hard tack and playing games. **Ages 7-9.**

Location	Session	Camp Code
Fort C.F. Smith Park	5	530010
Core Camp Hours:		9am-12pm
Core Fee:		\$164

### Civil War Spy Camp (Half Day AM)

We found some important information about the enemy and need to get a message back to the Capital. In order to do so we'll learn about Civil War spies and the techniques they used such as codes, disguises and hiding places. Daily games will help build our spy skills, hopefully without getting caught! **Ages 7-9.**

Location	Session	Camp Code
Fort C.F. Smith Park	7	530010
Core Camp Hours:		9am-12pm
Core Fee:		\$164

### Farm History Camp

Although there are no longer any farms in Arlington, our community still has a rich agricultural story. During this camp we'll use the fields and equipment at Fort C. F. Smith Park to learn farm skills like beekeeping and cider-making. **Ages 8-10.**

Location	Session	Camp Code
Fort C.F. Smith Park	2	530010
Core Camp Hours:		9am-2pm
Core Fee:		\$218

### All Paths Lead to Gulf Branch

Get out and get hiking! Escape the heat of summer in the cool calm of our forests, exploring the paths and waterways of Northern Arlington. Climb waterfalls, catch fish and invertebrates and hike along the Potomac River. Each day we will hike somewhere new, beginning and ending at Gulf Branch Nature Center. Sturdy shoes and clothes that can get wet and muddy are recommended for this camp. **Ages 10-13.**

Location	Session	Camp Code
Gulf Branch Nature Center	3	530011
Core Camp Hours (No camp July 5th):		9am-2:30pm
Core Fee:		\$220



### Looking for the Camp Guide by Category?

It's moved Online! Visit [parks.arlingtonva.us/programs/summer-camps/](https://parks.arlingtonva.us/programs/summer-camps/) to search all the camp listings by camp title, category, location, age, or start date! It's the fastest and easiest way to find the camp option that's best for you.



### Art of the Natural World

The natural world provides the inspiration for a whole week's worth of art projects! Campers will explore the park, get hands on with animals and art supplies and participate in a group project that will have a home at the Nature Center. We'll try printmaking, drawing, painting and sculpting. Hikes and games round out the day! **Ages 9-11.**

Location	Session	Camp Code
Gulf Branch Nature Center	4	530011
Core Camp Hours:		9am-2:30pm
Core Fee:		\$275

### Invertebrate Investigations (Half Day AM)

With crayfish in creeks, butterflies in gardens, and snails under logs—invertebrates are everywhere! Master the strange world of life without a backbone. We'll get hands on with critters, explore the park, and create a mini-zoo to enjoy during our camp week! Games and crafts complete the day. Session contents repeat, participants should only register for one session. **Ages 7-9.**

Location	Sessions	Camp Code
Gulf Branch Nature Center	1,2	530011
Core Camp Hours:		9am-12:30pm
Core Fee:		\$191

### Nature Camp Classic (Half Day AM)

Enjoy perennial camp favorites again this year—roasting marshmallows, touching turtles, scavenger hunts and more! Campers meet critters and explore the park while playing in the creek, searching under logs for salamanders or catching bugs in the meadow. Games and crafts round out the day. Session contents repeat, participants should only register for one session. **Ages 6-7.**

Location	Sessions	Camp Code
Gulf Branch Nature Center	7,8	530011
Core Camp Hours:		9am-12:30pm
Core Fee:		\$191

### Fish & Explore: Big Fish

Fish & Explore takes campers off-site to teach fishing basics and more intensive fishing techniques, including targeting specific fish species, reading the water and navigation safety. All gear including tackle, rods, reels and life jackets supplied. Bring lunch, snack, water bottle, change of clothes, sneakers or river shoes and towel. **Ages 10-16.**

Location	Session	Camp Code
Greenbrier Park	2	531020
Core Camp Hours:		8:30am-4:30pm
Core Fee:		\$600
Contact:		703.215.1066 or Info@fishandexplore.com

### Fish & Explore: Junior Animal Explorers

In this program for younger campers Fish & Explore transports budding explorers off-site to wander the woods and splash in creeks. Campers will be introduced to our local flora and fauna up close and get a chance to see reptiles, amphibians and insects in their native habitat. **Ages 6-9.**

Location	Session	Camp Code
Greenbrier Park	4	531020

Core Camp Hours:	9am-3pm
Core Fee:	\$425
Contact:	703.215.1066 or Info@fishandexplore.com

### Fish & Explore: Young Anglers

Fish & Explore takes campers to lakes, rivers and the Chesapeake Bay to catch fish, learn water safety, nature awareness plus fresh and saltwater fishing basics (casting, rigging, knot tying, selecting tackle and lures and identifying fish). Campers wear life jackets when in the water or on a boat. **Ages 7-10.**

Location	Sessions	Camp Code
Greenbrier Park	1,5	531020
Long Bridge Park	8,10	531020
Core Camp Hours:		8:30am-4:30pm
Core Fee:		\$600
Contact:		703.215.1066 or Info@fishandexplore.com

### Fish & Explore: Native Animal Explorers

Fish & Explore transports campers off-site to hike trails, wade in streams and walk pond and lake shores to find native wildlife. Campers observe, catch, photograph and release frogs, toads, tadpoles, salamanders, lizards, turtles, crayfish, minnows and other small critters. Wear sneakers and bring lunch, snack, river shoes, change of clothes and towel. **Ages 7-11.**

Location	Session	Camp Code
Greenbrier Park	6	531020
Long Bridge Park	9	531020
Core Camp Hours:		8:30am-4:30pm
Core Fee:		\$475
Contact:		703.215.1066 or Info@fishandexplore.com

### Fish & Explore: Paddle and Explore 1

Fish & Explore takes campers off-site to learn kayaking skills while getting up close to native wildlife along waterways, ponds and lakes. Beach stops allow campers to wade and observe, catch, photograph and release frogs, toads, tadpoles, salamanders, lizards, turtles and other small critters. Life jackets are provided and required while kayaking. **Ages 8-12.**

Location	Session	Camp Code
Greenbrier Park	7	531020
Core Camp Hours:		8:30am-4:30pm
Core Fee:		\$600
Contact:		703.215.1066 or Info@fishandexplore.com

### Virginia Outside: Fish n' Fun Camp

Designed to teach the basics of freshwater fishing through games/activities and on-the-water experience. Campers learn casting, fish species and types of tackle. Campers will also take time to play, explore and cool off from the sun with activities such as creek exploring, outdoor games, nature centers, popsicle breaks and more! **Ages 7-9.**

Location	Sessions	Camp Code
Gunston CC	1,2,6,8,10	531022
Core Camp Hours:		8:30am-3pm
Core Fee:		\$450
Contact:		804.272.6362 or Brittany@virginiaoutside.com



## Virginia Outside: Adventure Fishing Camp

Educational outdoor adventure camp providing opportunities to learn tactics for fishing in many different types of Virginia water (ponds, rivers and the Chesapeake Bay). Campers learn casting, knot tying, and fish species. Campers may also earn their fishing merit badge. Virginia Outside provides bait, tackle, rods, lifejackets, and good times! **Ages 9-14.**

**Location** Sessions **Camp Code**  
**Gunston CC** 1,3,6,7,9,10 **531024**  
**Core Camp Hours:** 8:30am-4:30pm  
**Core Fee:** \$575  
**Fee/Session 3:** \$460  
**Contact:** 804.272.6362 or Brittany@virginiaoutside.com

## Virginia Outside: Mountain Biking Camp

Daily trail rides with guided instruction. Campers will develop skills including: shifting, hill climbing /descending, dodging obstacles, riding etiquette, maintenance, safety and more. Bikes/Helmets provided by Virginia Outside, but campers are encouraged to bring their personal bike. Campers should know how to ride a bike on and off pavement. **Ages 9-14.**

**Location** Sessions **Camp Code**  
**Gunston CC** 3,4,5,8,10 **531026**  
**Core Camp Hours:** 8:30am-4pm  
**Core Fee:** \$550  
**Fee/Session 3:** \$440  
**Contact:** 804.272.6362 or Brittany@virginiaoutside.com

## COOKING & WELLNESS

### P.S. KARMA: Sweet Treats (Basic)

Cake decorating camp. Campers will learn fun and creative cake decorating techniques. They will learn how to hold/control the piping bags as well as decorate cardboard and styrofoam cakes. Each camper receives a personalized cake decorating kit. **Ages 8-15.**

**Location** Session **Camp Code**  
**Williamsburg MS** 4 **541014**  
**Core Camp Hours:** 9am-3pm  
**Extended Hours:** 8-9am/3-5pm  
**Core Fee:** \$275  
**Extended Hour Fees:** \$40/\$75  
**Contact:** 571.310.1163 or pskarmagifts@gmail.com

### P.S. KARMA: Sweet Treats (Emoji)

Cake decorating camp. Campers will learn fun and creative cake decorating techniques. They will learn how to hold/control the piping bags as well as decorate cardboard and styrofoam cakes. Class and games are emoji themed, and students will have a cake war on the last day of camp. Each camper receives a personalized cake decorating kit. **Ages 8-15.**

**Location** Session **Camp Code**  
**Williamsburg MS** 4 **541015**  
**Core Camp Hours:** 9am-3pm  
**Extended Hours:** 8-9am/3-5pm  
**Core Fee:** \$275  
**Extended Hour Fees:** \$40/\$75  
**Contact:** 571.310.1163 or pskarmagifts@gmail.com

### Tiny Chefs: Chopped! Junior

Never have food challenge reality shows been so popular and Chopped! is a favorite at Tiny Chefs! Our version focuses on different cuisines daily. Each day campers will be presented with 3 or 4 ingredients, which reflect French, Italian, Mexican, Asian and "All-American" cuisines. Campers will

challenge themselves to make mouthwatering specialties, traditional favorites and explore new ingredients, tastes and combinations. **Ages 6-10.**

**Location** Session **Camp Code**  
**Barcroft ES** 4 **541016**  
**Core Camp Hours:** 9am-4pm  
**Core Fee:** \$405  
**Contact:** 301.841.7395 or info@tinychefs.com

### Tiny Chefs: Cupcake Wars

If you've ever been curious about how the pros make cupcakes so precious and ornate, and if competition is your middle name, then this is the week for you! We'll spend three days on cupcake basics— measuring, mixing, baking and frosting, then finish the week with two days of baking battle! May the best cupcake win! **Ages 8-12.**

**Location** Session **Camp Code**  
**Swanson MS** 1 **541016**  
**Core Camp Hours:** 9am-4pm  
**Core Fee:** \$405  
**Contact:** 301.841.7395 or info@tinychefs.com

### Tiny Chefs: American Picnic

For most Americans, nothing says summer like Hamburgers, Hot Dogs and Potato Salad. This camp is also going to explore American cuisine from sea to shining sea, from Southern BBQ to California's twist on the BLT to the countrywide favorite Strawberry Shortcake! Come dive into summer with Tiny Chefs! **Ages 8-12.**

**Location** Session **Camp Code**  
**Swanson MS** 2 **541016**  
**Core Camp Hours:** 9am-4pm  
**Core Fee:** \$405  
**Contact:** 301.841.7395 or info@tinychefs.com

### Tiny Chefs: Dips & Donuts

Does your kid love to dip their food? Chips in salsa, veggies in hummus? How about dipping donuts in glazes and toppings? In this fun, nutritious and delicious camp, the Tiny Chefs will make savory dips like Mexican Layered Dip or Spinach and Artichoke Dip as well as donuts & dips: Lemon Glazed Blueberry Donuts and Pumpkin Donut Holes with Cinnamon Topping. **Ages 6-12.**

**Location** Session **Camp Code**  
**Barcroft ES** 3 **541016**  
**Core Camp Hours:** 9am-4pm  
**Core Fee:** \$405  
**Contact:** 301.841.7395 or info@tinychefs.com

### Tiny Chefs: Cooking Around the World

It is said that if you want to learn about a country you should start with the food. In this camp, our Tiny Chefs will learn how to create the cuisines of multiple countries and explore the fabulous flavors of Italian, Indian, Vietnamese, Mexican & French foods. Come join us as we expand our world and our palates! **Ages 6-12.**

**Location** Session **Camp Code**  
**Barcroft ES** 6 **541016**  
**Core Camp Hours:** 9am-4pm  
**Core Fee:** \$405  
**Contact:** 301.841.7395 or info@tinychefs.com

### Tiny Chefs: Restaurant Creation

If your Tiny Chef dreams of their own restaurant, sign them up for this inventive summer camp! Campers will produce a different course (appetizer, soup, main dish or dessert)

or an item from a certain cuisine and build a restaurant around it. Students will be introduced to a variety of cuisines, cooking skills and presentations throughout the week. **Ages 6-12.**

**Location** Session **Camp Code**  
**Barcroft ES** 7 **541016**  
**Core Camp Hours:** 9am-4pm  
**Core Fee:** \$405  
**Contact:** 301.841.7395 or info@tinychefs.com

### Tiny Chefs: Chopped!

Is your junior chef itching for a challenge in the kitchen? They'll feel like a star competing in their own version of Chopped! Junior. Each day will reveal 4 "mystery" ingredients that our young chefs will need to incorporate as they work together in small teams with rotating jobs to create appetizer, entree and dessert courses. **Ages 8-12.**

**Location** Session **Camp Code**  
**Barcroft ES** 5 **541016**  
**Core Camp Hours:** 9am-4pm  
**Core Fee:** \$405  
**Contact:** 301.841.7395 or info@tinychefs.com

### Tiny Chefs: The Art of Cupcakes

If your little baker has taken our Cupcake Wars' camp, the Art of Cupcakes is the next camp for them! We will be decorating cupcakes into unique and artful creations all week long! Animal face cupcakes, floral cupcakes, and hamburger cupcakes are all on the menu this week. **Ages 8-12.**

**Location** Session **Camp Code**  
**Swanson MS** 8 **541016**  
**Core Camp Hours:** 9am-4pm  
**Core Fee:** \$405  
**Contact:** 301.841.7395 or info@tinychefs.com

## CAMPS FOR INDIVIDUALS WITH DISABILITIES

### Camp Discovery

Youth with disabilities can enjoy this day camp and participate in art, sports, nature, water days and more! This camp typically serves campers who require close supervision, assistance with personal care, recreation participation and/or social skills with moderate to maximum support provided. Staffed based on camper needs. Spots are very limited. **Ages 6-11.**

**Location** Sessions **Camp Code**  
**Fairlington CC** 2,3,4,5,6,7,8 **560011**  
**Core Camp Hours:** 9am-3pm  
**Core Fee:** \$238  
**Fee/Session 3:** \$191

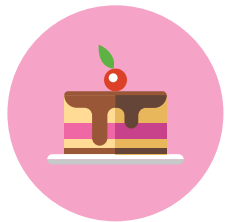
### Project FIVE

Pre-teens to young adults with disabilities can enjoy this day camp and participate in art, sports, nature, water days and more! Camp starts at age 12 and you can enjoy week to week registration flexibility. Staffed based on camper needs. Spots are very limited. **Ages 12-21.**

**Location** Sessions **Camp Code**  
**Fairlington CC** 2,3,4,5,6,7,8 **560010**  
**Core Camp Hours:** 9am-3pm  
**Core Fee:** \$238  
**Fee/Session 3:** \$191

### SESSION / DATES

- 1 JUNE 21 – JUNE 25
- 2 JUNE 28 – JULY 2
- 3 JULY 5 – JULY 9  
(NO CAMP JULY 5)
- 4 JULY 12 – JULY 16
- 5 JULY 19 – JULY 23
- 6 JULY 26 – JULY 30
- 7 AUG. 2 – AUG. 6
- 8 AUG. 9 – AUG. 13
- 9 AUG. 16 – AUG. 20
- 10 AUG. 23 – AUG. 27





COUNTY ONLINE  
REGISTRATION  
BEGINS AT 7AM

**MAR 24!**  
**2021**

To register for  
Camp Heat  
scan this QR code:



## TWEEN/TEENS SPECIALTY

### Boolean Girl: An Introduction to Python, Programming Minecraft

Advanced coders will learn and use Python, a top professional programming language, to control the Minecraft universe. Teleport, change blocks, build buildings, freeze water, and create games inside Minecraft. This class is a great way to transition from Scratch to a programming language taught in most high school programming classes..  
**Ages 10-14.**

<b>Location</b>	<b>Sessions</b>	<b>Camp Code</b>
Marymount Univ.	4, 7	555013
<b>Core Camp Hours:</b>		9am-3pm
<b>Extended Hours:</b>		8-9am/3-6pm
<b>Core Fee:</b>		\$399
<b>Extended Hour Fees:</b>		\$75/\$100
<b>Contact:</b>	202.996.8241 or info@booleangirl.org	

### Boolean Girl: Scratch Circuits: Electrical Engineering and Coding

This camp sits at the crossroads of programming and electrical engineering. If your programmer thinks coding is cool, they will love how they can write code to control physical objects like lights, Lego® motors and motion sensors to create alarm systems, robots, music players and light shows. Details: booleangirl.org. **Ages 10-14.**

<b>Location</b>	<b>Sessions</b>	<b>Camp Code</b>
Marymount Univ.	5, 9	555014
<b>Core Camp Hours:</b>		9am-3pm
<b>Extended Hours:</b>		8-9am/3-6pm
<b>Core Fee:</b>		\$399
<b>Extended Hour Fees:</b>		\$75/\$100
<b>Contact:</b>	202.996.8241 or info@booleangirl.org	

### SPARK Business Academy: Budding Entrepreneurs

Join other intrepid campers and learn what it takes to launch your own business. Campers build self-confidence while developing business skills in strategy, marketing and finance. Campers select a business idea, learn to develop a business plan and make a pitch presentation on the last day. **Ages 10-13.**

<b>Location</b>	<b>Session</b>	<b>Camp Code</b>
Virtual	1	555020
<b>Core Camp Hours:</b>		9am-4pm
<b>Core Fee:</b>		\$425
<b>Contact:</b>	703.371.3155 or chuchi.arevalo@sparkbusinessacademy.com	

### SPARK Business Academy: Bulls & Bears

Campers build their own stock portfolio and trade stocks like Apple, Nike or Amazon with a cool investing simulation tool. This innovative experience empowers campers with the tools and mindset to face future investment decisions with confidence and buy low, sell high! A solid foundation for successful future investors! **Ages 10-13.**

<b>Location</b>	<b>Session</b>	<b>Camp Code</b>
Virtual	1	555019
<b>Core Camp Hours:</b>		9am-4pm
<b>Core Fee:</b>		\$425
<b>Contact:</b>	703.371.3155 or chuchi.arevalo@sparkbusinessacademy.com	



### SPARK Business Academy: Future Millionaires Bootcamp

Join us for this unique financial literacy camp with a different daily theme: personal finance, investments, entrepreneurship, leadership and innovation. Featured in the Sun Gazette, Business Week and international newspapers, this program empowers campers with essential 21st century skills and the ability to make sound financial decisions. **Ages 10-13.**

<b>Location</b>	<b>Session</b>	<b>Camp Code</b>
Williamsburg MS	5	555015
<b>Core Camp Hours:</b>		9am-4pm
<b>Extended Hours:</b>		8-9am/4-5:30 pm
<b>Core Fee:</b>		\$425
<b>Extended Hour Fees:</b>		\$75/\$105
<b>Contact:</b>	703.371.3155 or chuchi.arevalo@sparkbusinessacademy.com	

### SPARK Business Academy: Sports Management

For the sports lover, future team General Manager, sports team owner or ESPN analyst, this unique program helps campers view the world of sports from a business perspective. Campers actively discuss and analyze different topics, including player contracts, mock drafts, college sports, endorsements, the Super Bowl, e-sports and more! **Ages 10-13.**

<b>Location</b>	<b>Session</b>	<b>Camp Code</b>
Madison CC	10	555017
<b>Core Camp Hours:</b>		9am-4pm
<b>Extended Hours:</b>		8-9am/4-5:30 pm
<b>Core Fee:</b>		\$425
<b>Extended Hour Fees:</b>		\$75/\$105
<b>Contact:</b>	703.371.3155 or chuchi.arevalo@sparkbusinessacademy.com	

### SPARK Business Academy: Junior CEOs

In this leadership program, campers act as CEOs for leading companies and work in groups to make strategic recommendations to address real business issues. Campers enhance their problem-solving skills, develop business savvy and cultivate a strategic mindset as future leaders. **Ages 14-17.**

<b>Location</b>	<b>Session</b>	<b>Camp Code</b>
Williamsburg MS	5	555016
<b>Core Camp Hours:</b>		9am-4pm
<b>Extended Hours:</b>		8-9am/4-5:30 pm
<b>Core Fee:</b>		\$425
<b>Extended Hour Fees:</b>		\$75/\$105
<b>Contact:</b>	703.371.3155 or chuchi.arevalo@sparkbusinessacademy.com	

### SPARK Business Academy: Finance for Teens

Learn how to manage your money in this program promoting essential life skills! Set your financial goals, develop a budget from scratch, shop for a credit card and calculate the monthly cost of your dream car. Campers learn about mortgages, FICO scores, taxes and the dangers of piling up

debt. **Ages 14-17.**

<b>Location</b>	<b>Session</b>	<b>Camp Code</b>
Madison CC	10	555018
<b>Core Camp Hours:</b>		9am-4pm
<b>Extended Hours:</b>		8-9am/4-5:30 pm
<b>Core Fee:</b>		\$425
<b>Extended Hour Fees:</b>		\$75/\$105
<b>Contact:</b>	703.371.3155 or chuchi.arevalo@sparkbusinessacademy.com	

### SPARK Business Academy: Bulls & Bears (Half Day PM)

Campers build their own stock portfolio and trade stocks like Apple, Nike or Amazon with a cool investing simulation tool. This innovative experience empowers campers with the tools and mindset to face future investment decisions with confidence and buy low, sell high! A solid foundation for successful future investors! This camp can be paired with the FirstServe Tennis morning camps. **Ages 10-13.**

<b>Location</b>	<b>Session</b>	<b>Camp Code</b>
Yorktown HS	3	555019
<b>Core Camp Hours:</b>		12-4pm
<b>Core Fee:</b>		\$249
<b>Contact:</b>	703.371.3157 or chuchi.arevalo@sparkbusinessacademy.com	

### SPARK Business Academy: Budding Entrepreneurs (Half Day PM)

Join other intrepid campers and learn what it takes to launch your own business. Campers build self-confidence while developing business skills in strategy, marketing and finance. Campers select a business idea, learn to develop a business plan and make a pitch presentation on the last day. This camp can be paired with the FirstServe Tennis morning camps. **Ages 10-13.**

<b>Location</b>	<b>Session</b>	<b>Camp Code</b>
Yorktown HS	4	555020
<b>Core Camp Hours:</b>		12-4pm
<b>Core Fee:</b>		\$249
<b>Contact:</b>	703.371.3158 or chuchi.arevalo@sparkbusinessacademy.com	

### SPARK Business Academy: Sports Management (Half Day PM)

For the sports lover, future team General Manager, sports team owner or ESPN analyst, this unique program helps campers view the world of sports from a business perspective. Campers actively discuss and analyze different topics, including player contracts, mock drafts, college sports, endorsements, the Super Bowl, e-sports and more! This camp can be paired with the FirstServe Tennis morning camps. **Ages 10-13.**

<b>Location</b>	<b>Session</b>	<b>Camp Code</b>
Yorktown HS	5	555021
<b>Core Camp Hours:</b>		12-4pm
<b>Core Fee:</b>		\$249
<b>Contact:</b>	703.371.3159 or chuchi.arevalo@sparkbusinessacademy.com	



## Camp Heat: Girls Fire Camp

Calling all heroes! Join Arlington County Fire Department for a 5-day camp. Experience life in the fire service by participating in firefighting activities. Learn emergency medicine and rescue operations while building lifelong relationships with our female ACFD firefighters. Admission is FREE! **Ages 15-18.**

**Dates:** June 21-June 25, 2021  
**Core Camp Hours:** 7am-5pm  
**Core Fee:** Free  
**Registration:** [www.surveymonkey.com/r/CampHeat2021](http://www.surveymonkey.com/r/CampHeat2021)

## TWEEN/TEENS SPORTS

### FirstServe Tennis: Fun & Fundamentals (Half-Day AM)

Through fun skill-building games beginners learn the fundamental strokes. Intermediate players apply their tennis fundamentals to rallying and match play with emphasis on the serve, return of serve, score-keeping, and tennis rules. This camp can be paired with the SPARK Business Academy afternoon camps during some sessions. **Ages 10-14.**

Location	Sessions	Camp Code
Yorktown HS	1,2,4,5,6	545016
Marcey Road Park	7,8,9,10	545016
<b>Core Camp Hours:</b>		9am-12pm
<b>Extended Hours:</b>		8:30-9am
<b>Core Fee:</b>		\$399
<b>Extended Hour Fees:</b>		\$35
<b>Contact:</b>	703.868.8172 or <a href="mailto:info@tenniseveryone.net">info@tenniseveryone.net</a>	

### Tennis Central: The Academy

This camp is the ultimate tennis accelerator. Every child who participates in this program will be thoroughly evaluated to achieve great results. We cover everything including technique, strategy, mental acuity, fitness, and much more. This camp is perfect for players committed to performance tennis and want a more intensive instructional approach using drills and game competition. **Ages 12-18.**

Location	Sessions	Camp Code
VA Highlands Park	1,2,4,6	545018
Bluemont Park	3,5,7,8,9,10	545018
<b>Core Camp Hours:</b>		8:30am-3pm
<b>Core Fee:</b>		\$399
<b>Contact:</b>	240.586.2374 or <a href="mailto:alexis@tenniscentral.net">alexis@tenniscentral.net</a>	

### Teen Sports & Fitness Camp

Teen Sport & Fitness camp is an outdoor/indoor integrated physical program designed for teens looking to play sports and learn sport specific exercises. This program combines traditional outdoor games and total body strength and agility sessions. Visit <http://parks.arlingtonva.us/programs/teens/> to see an example of a week session. **Ages 13-17.**

Location	Sessions	Camp Code
Thomas Jefferson CC	1,4	544020
Carver CC	9	544020
<b>Core Camp Hours:</b>		9am-3pm
<b>Core Fee:</b>		\$215



### Virginia Baseball Club: Advanced Skills Baseball & Game Camp (Half Day AM)

Players are divided by age and skill level. Infielders work on progression fielding, throwing, double plays, tag plays, relays, and more. Half the camp time is dedicated to hitting practice and controlled scrimmage games. \*Infield-Hitting/Catcher-Pitching offered back to back. **Ages 10-15.**

Location	Sessions	Camp Code
Barcroft Park	2,4	545020
<b>Core Camp Hours:</b>		9-11:30am
<b>Core Fee:</b>		\$175
<b>Contact:</b>	<a href="mailto:questions@virginiabaseballclub.com">questions@virginiabaseballclub.com</a>	

### Virginia Baseball Club: Advanced Pitcher/Catcher Game Camp (Half Day PM)

Pitchers receive instruction on proper grips, pitch mechanics, holding runners (50'/70' and 90-foot diamond players), and fielding the position. Catchers work on receiving techniques, blocking, throwing to bases, pop ups, tags, and fielding bunts. Catchers are required to bring their own catching gear and catcher's mitt. \*Infield-Hitting/Catcher-Pitching offered back to back. **Ages 10-15.**

Location	Sessions	Camp Code
Barcroft Park	2,4	545021
<b>Core Camp Hours:</b>		12-2pm
<b>Core Fee:</b>		\$175
<b>Contact:</b>	<a href="mailto:questions@virginiabaseballclub.com">questions@virginiabaseballclub.com</a>	

### Virginia Baseball Club: Advanced Infield/Hitting Game Camp (Half Day AM)

Add 40 game at-bats to your summer in 4 days! Game Camp features modified, continuous action two-hour game that provides high repetitions of hitting, fielding, and base running. Campers will have statistics emailed each day and at end of camp. Our goal is to get each player 10 or more game-at-bats! per day. **Ages 13-16.**

Location	Session	Camp Code
Greenbrier Park	3	545022
<b>Core Camp Hours:</b>		9-11am
<b>Core Fee:</b>		\$195
<b>Contact:</b>	<a href="mailto:questions@virginiabaseballclub.com">questions@virginiabaseballclub.com</a>	

## TWEEN/TEENS COMMUNITY CAMP

### Junior Jam

Junior Jam is for busy teens that still want to make new friends and enjoy summer favorites. There are (4) two-week sessions. NOTE: This Drop-in program allows teens to sign out early independently. **Ages 11-16** (11-year olds must be entering grade 6. Current report card may be requested for verification).

Location	Sessions	Camp Code
Tyrol Hill Park	1-2,3-4,5-6,7-8	552015
Ft. Scott Park	1-2,3-4,5-6,7-8	552016
Langston Brown CC	1-2,3-4,5-6,7-8	552017
Lacey Woods Park	1-2,3-4,5-6	552018
Aurora Hills	1-2,3-4,5-6,7-8	552019
<b>Core Camp Hours:</b>		1-5pm
<b>Core Fee:</b>		\$30
<b>Fee/Session 3-4:</b>		\$27



## TWEEN/TEENS ARTS

### Creative Arts Teen Camp: Ceramics

In this two-week, full-day specialized program, beginner and returning teen artists will learn the basics and fundamentals of hand-building! Teens will develop their skills to experience the hands-on satisfaction of clay sculpture! Emphasis is on using your imagination to make both fun and functional pieces. Open to all skill levels and abilities. **Ages 12-16.**

Location	Sessions	Camp Code
Thomas Jefferson CC	1-2,5-6	570016
<b>Core Camp Hours:</b>		9am-3pm
<b>Core Fee:</b>		\$640

### Creative Arts Teen Camp: Mixed Media

In this two-week, full-day program, campers experiment with exciting art materials and techniques including drawing, painting, sculpture, printmaking and collage. We emphasize creativity and imagination with a special focus on skill building. **Ages 12-16.**

Location	Sessions	Camp Code
Thomas Jefferson CC	3-4	570016
<b>Core Camp Hours (includes July 4 holiday):</b>		9am-3pm
<b>Core Fee:</b>		\$576

### Creative Arts Teen Camp: Drawing & Painting

In this one-week specialized program, beginner and returning teen artists of all skill levels will develop their drawing and painting techniques. Teens will explore a variety of media such as graphite, charcoal, pastels, pen and colored pencils to learn about line, perspective, values and composition, and the basics of painting. **Ages 12-16.**

Location	Sessions	Camp Code
Thomas Jefferson CC	7	570016
<b>Core Camp Hours:</b>		9am-3pm
<b>Core Fee:</b>		\$320



# Junior Jam!



## CAMPS WITH SELF-REGISTRATION

### Encore Stage & Studio, Educational Theatre Company and Jane Franklin Dance

have several creative camps for the young performer! Registration for these camps is not managed by Arlington's Department of Parks and Recreation. Register your child(ren) through their separate registration process—noted in each of the camps listed.

#### Encore Stage & Studio

##### Encore Stage & Studio: The Amazing Race

Adventure is out there, and Encore will help you find it! Actors will work together as an ensemble to complete challenges before receiving their next globetrotting clue. Teamwork and lots of laughs will be required! **Ages 5-9.**

**Registration:** [encorestageva.org](http://encorestageva.org)  
**Location:** 3700 S. Four Mile Run Dr.  
**Session:** 1  
**Core Camp Hours:** 10am-4pm  
**Extended Hours:** 9-10am/4-5pm  
**Core Fee:** \$395  
**Extended Hour Fees:** \$50/\$50  
**Contact:** 703.548.1154 or [camp@encorestageva.org](mailto:camp@encorestageva.org)

##### Encore Stage & Studio: Stage Door 1

Want to pack as much theatre as possible into just two weeks? Hone your performance and technical theatre skills in the fast-paced environment of this innovative camp! Campers will have the opportunity to participate as both actors and designers/crew members as they channel their creative energy, talent, and enthusiasm into a production. **Ages 11-15.**

**Registration:** [encorestageva.org](http://encorestageva.org)  
**Location:** Lubber Run Amphitheater  
**Sessions:** 1-2  
**Core Camp Hours:** 10am-4pm  
**Extended Hours:** 9-10am/4-5pm  
**Core Fee:** \$755  
**Extended Hour Fees:** \$100/\$100  
**Contact:** 703.548.1154 or [camp@encorestageva.org](mailto:camp@encorestageva.org)

##### Encore Stage & Studio: Stage Door 2

Want to pack as much theatre as possible into just two weeks? Hone your performance and technical theatre skills in the fast-paced environment of this innovative camp! Students will have the opportunity to participate as both actors and designers/crew members as they channel their creative energy, talent, and enthusiasm into a production. Visit Encore's website for play titles. **Ages 11-15.**

**Registration:** [encorestageva.org](http://encorestageva.org)  
**Location:** Lubber Run Amphitheater  
**Sessions:** 4-5  
**Core Camp Hours:** 10am-4pm  
**Extended Hours:** 9-10am/4-5pm  
**Core Fee:** \$755  
**Extended Hour Fees:** \$100/\$100  
**Contact:** 703.548.1154 or [camp@encorestageva.org](mailto:camp@encorestageva.org)

##### Encore Stage & Studio: Fairytale Kingdom

Hear ye, hear ye, Lords and Ladies: you are invited to experience the world of fantastic fairytales. Hear the stories and envision the enchanted worlds that await you for an exciting week of stories that you love. Spend the week in a land far, far away, where royal costumes are encouraged, and marvelous adventures are guaranteed. **Ages 5-9.**



**Registration:** [encorestageva.org](http://encorestageva.org)  
**Location:** 3700 S. Four Mile Run Dr.  
**Session:** 2  
**Core Camp Hours:** 10am-4pm  
**Extended Hours:** 9-10am/4-5pm  
**Core Fee:** \$395  
**Extended Hour Fees:** \$50/\$50  
**Contact:** 703.548.1154 or [camp@encorestageva.org](mailto:camp@encorestageva.org)

##### Encore Stage & Studio: Scooby Doo Mysteries

What would you do for a Scooby snack? Come along with Shaggy and the rest of the gang to solve the mystery and apprehend the villain. This camp calls for lots of teamwork, problem-solving, and creativity. You'll hear the villain say, "I would have gotten away with it too, if it weren't for you meddling kids and your dog!". **Ages 5-9.**

**Registration:** [encorestageva.org](http://encorestageva.org)  
**Location:** 3700 S. Four Mile Run Dr.  
**Session:** 3  
**Core Camp Hours:** 10am-4pm  
**Extended Hours:** 9-10am/4-5pm  
**Core Fee:** \$320  
**Extended Hour Fees:** \$40/\$40  
**Contact:** 703.548.1154 or [camp@encorestageva.org](mailto:camp@encorestageva.org)

##### Encore Stage & Studio: Spotlight Showcase

Elevate your acting abilities with the guidance of Encore's professional teaching artists in this intensive focused on scene work. **Ages 11-15.**

**Registration:** [encorestageva.org](http://encorestageva.org)  
**Location:** 3700 S. Four Mile Run Dr.  
**Session:** 3  
**Core Camp Hours:** 10am-4pm  
**Extended Hours:** 9-10am/4-5pm  
**Core Fee:** \$320  
**Extended Hour Fees:** \$40/\$40  
**Contact:** 703.548.1154 or [camp@encorestageva.org](mailto:camp@encorestageva.org)

##### Encore Stage & Studio: Broadway Kids: Disney

Broadway Kids was so popular that we brought it back again for you to enjoy this summer! Be Our Guest as we Step in Time to Disney songs you know and love. Don't Let It Go because we're going to show you A Whole New World! **Ages 5-9.**

**Registration:** [encorestageva.org](http://encorestageva.org)  
**Location:** 3700 S. Four Mile Run Dr.  
**Session:** 4  
**Core Camp Hours:** 10am-4pm  
**Extended Hours:** 9-10am/4-5pm  
**Core Fee:** \$395  
**Extended Hour Fees:** \$50/\$50  
**Contact:** 703.548.1154 or [camp@encorestageva.org](mailto:camp@encorestageva.org)

##### Encore Stage & Studio: Broadway Kids: Classics

Didn't get enough Broadway Kids in week one? Cheer Up Charlie, we have got more where that came from! You Can't Stop the Beat as we sing and dance our way through some of Broadway's

biggest hits. It'll be So Much Better with you there! **Ages 5-9.**

**Registration:** [encorestageva.org](http://encorestageva.org)  
**Location:** 3700 S. Four Mile Run Dr.  
**Session:** 5  
**Core Camp Hours:** 10am-4pm  
**Extended Hours:** 9-10am/4-5pm  
**Core Fee:** \$395  
**Extended Hour Fees:** \$50/\$50  
**Contact:** 703.548.1154 or [camp@encorestageva.org](mailto:camp@encorestageva.org)

##### Encore Stage & Studio: Raiders of the Lost Artifact

Together we will find the Lost Artifact. Our goal is to follow the clues and find the location of the missing artifact, when was it last seen, who could have taken it. If you like Indiana Jones or adventure tales, you will enjoy the twist and turns that will lead you to Encore. **Ages 5-9.**

**Registration:** [encorestageva.org](http://encorestageva.org)  
**Location:** 3700 S. Four Mile Run Dr.  
**Session:** 6  
**Core Camp Hours:** 10am-4pm  
**Extended Hours:** 9-10am/4-5pm  
**Core Fee:** \$395  
**Extended Hour Fees:** \$50/\$50  
**Contact:** 703.548.1154 or [camp@encorestageva.org](mailto:camp@encorestageva.org)

##### Encore Stage & Studio: Stage Door Session 3

Want to pack as much theatre as possible into just two weeks? Hone your performance and technical theatre skills in the fast-paced environment of this innovative camp! Students will have the opportunity to participate as both actors and designers/crew members as they channel their creative energy, talent, and enthusiasm into a production. **Ages 11-15.**

**Registration:** [encorestageva.org](http://encorestageva.org)  
**Location:** 3700 S. Four Mile Run Dr.  
**Sessions:** 6-7  
**Core Camp Hours:** 10am-4pm  
**Extended Hours:** 9-10am/4-5pm  
**Core Fee:** \$755  
**Extended Hour Fees:** \$100/\$100  
**Contact:** 703.548.1154 or [camp@encorestageva.org](mailto:camp@encorestageva.org)

##### Encore Stage & Studio: The Sights and Sounds of Winter Wonderland

Do you want to build a snowman...in August? Ride on the Polar Express? Snuggle on your thinking caps as you and your teammates stretch your imaginations to create a frosty landscape full of creativity, friendship, and fun! Go on a frosty adventure with Encore in our Winter Wonderland session. **Ages 5-9.**

**Registration:** [encorestageva.org](http://encorestageva.org)  
**Location:** 3700 S. Four Mile Run Dr.  
**Session:** 8  
**Core Camp Hours:** 10am-4pm  
**Extended Hours:** 9-10am/4-5pm  
**Core Fee:** \$395

**Extended Hour Fees:** \$50/\$50  
**Contact:** 703.548.1154 or [camp@encorestageva.org](mailto:camp@encorestageva.org)

##### Encore Stage & Studio: Happily Ever After

Make your Once Upon a Summer into Happily Ever After! From dragons and wizards to brave princesses and princes, bring classic tales to life as you embark this royal adventure! **Ages 5-9.**

**Registration:** [encorestageva.org](http://encorestageva.org)  
**Location:** 3700 S. Four Mile Run Dr.  
**Session:** 9  
**Core Camp Hours:** 10am-4pm  
**Extended Hours:** 9-10am/4-5pm  
**Core Fee:** \$395  
**Extended Hour Fees:** \$50/\$50  
**Contact:** 703.548.1154 or [camp@encorestageva.org](mailto:camp@encorestageva.org)

##### Encore Stage & Studio: Island Adventures

Cool ocean breezes, mermaids and pirates await you on our island of adventure! We'll use some of our favorite stories of the tropics and the sea to launch our imaginations. If you like Moana or Treasure Island jump aboard our boat and get ready to set sail! **Ages 5-9.**

**Registration:** [encorestageva.org](http://encorestageva.org)  
**Location:** 3700 S. Four Mile Run Dr.  
**Session:** 10  
**Core Camp Hours:** 10am-4pm  
**Extended Hours:** 9-10am/4-5pm  
**Core Fee:** \$395  
**Extended Hour Fees:** \$50/\$50  
**Contact:** 703.548.1154 or [camp@encorestageva.org](mailto:camp@encorestageva.org)

#### Educational Theatre Co.

##### Educational Theatre Co: ETC Beginnings for Preschoolers

ETC Beginnings offers an enriching experience for preschoolers to learn basic acting skills, and use their bodies, voices and imaginations to create exciting characters. The day includes acting games, story creation, arts & crafts, and outdoor time. Note: Preschoolers must be potty trained. **Ages 3-5.**

**Registration:** [educationaltheatrecompany.org](http://educationaltheatrecompany.org)  
**Location:** 3700 S. Four Mile Run Dr.  
**Sessions:** 1, 5  
**Core Camp Hours:** 9am-12pm  
**Core Fee:** \$250  
**Contact:** [info@educationaltheatrecompany.org](mailto:info@educationaltheatrecompany.org)

##### Educational Theatre Co: Creative Drama Camps

Silly characters take the stage! Through improvisation, storytelling, art projects, theatre games & rehearsals, campers learn acting basics. Students will discover new ways of collaborating with peers and the joy of performing. If possible, a sharing will be held on the Friday afternoon of each session. **Ages 5-7.**

These camps will register your child(ren) through their separate registration process noted in each of the camps listed.



## CAMPS WITH SELF-REGISTRATION

**Registration:** [educationaltheatrecompany.org](http://educationaltheatrecompany.org)  
**Location:** 3700 S. Four Mile Run Dr.  
**Sessions:** 1, 2, 5, 7, 8, 10  
**Core Camp Hours:** 9am-3pm  
**Extended Hours:** 3-5pm  
**Core Fee:** \$365  
**Extended Hour Fees:** \$80  
**Contact:** [info@educationaltheatrecompany.org](mailto:info@educationaltheatrecompany.org)

### Educational Theatre Co: Musical Revue

Sing, act, dance, and design one singular sensation! Students collaborate with professional artists to create a dynamic performance, learning dance, vocal technique, and improvisation along the way. A sharing will be held on the last day of camp if possible. **Ages 8-12.**

**Registration:** [educationaltheatrecompany.org](http://educationaltheatrecompany.org)  
**Location:** Lubber Run Amphitheater  
**Sessions:** 7-8  
**Core Camp Hours:** 9am-3pm  
**Extended Hours:** 3-5pm  
**Core Fee:** \$630  
**Extended Hour Fees:** \$160  
**Contact:** [info@educationaltheatrecompany.org](mailto:info@educationaltheatrecompany.org)



### Educational Theatre Co: Musical Revue Intensive

Sing, act, dance, and design one singular sensation! Teens, rising 7th graders and up, collaborate with professional artists to create a dynamic cabaret performance, learning dance and vocal technique, while pushing themselves to new artistic heights. A sharing will be held on the last day of camp if possible. **Ages 13-18.**

**Registration:** [educationaltheatrecompany.org](http://educationaltheatrecompany.org)  
**Location:** Lubber Run Amphitheater  
**Sessions:** 7-8  
**Core Camp Hours:** 9am-3pm  
**Extended Hours:** 3-5pm  
**Core Fee:** \$630  
**Extended Hour Fees:** \$160  
**Contact:** [info@educationaltheatrecompany.org](mailto:info@educationaltheatrecompany.org)

### Educational Theatre Co: Acting Out: Comedy Vs. Drama

Have a blast "acting out" on the stage! Campers will gain and strengthen tools for creating characters, stories, and acting technique. Campers will master skills such as character development, improvisation, and ensemble work! A sharing will be held on the last day of camp if possible. **Ages 8-12.**

**Registration:** [educationaltheatrecompany.org](http://educationaltheatrecompany.org)  
**Location:** 3700 S. Four Mile Run Dr.  
**Session:** 7  
**Core Camp Hours:** 9am-3pm  
**Extended Hours:** 3-5pm  
**Core Fee:** \$365  
**Extended Hour Fees:** \$80  
**Contact:** [info@educationaltheatrecompany.org](mailto:info@educationaltheatrecompany.org)

### Educational Theatre Co: Acting Out: Stories

Have a blast "acting out" on the stage! Campers will gain and strengthen tools for creating characters, stories, and acting technique. Campers will master skills such as character development, improvisation, and ensemble work! A sharing will be held on the last day of camp if possible. **Ages 8-12.**

**Registration:** [educationaltheatrecompany.org](http://educationaltheatrecompany.org)  
**Location:** 3700 S. Four Mile Run Dr.  
**Session:** 10  
**Core Camp Hours:** 9am-3pm  
**Extended Hours:** 3-5pm  
**Core Fee:** \$365  
**Extended Hour Fees:** \$80  
**Contact:** [info@educationaltheatrecompany.org](mailto:info@educationaltheatrecompany.org)

### Educational Theatre Co: Page to Stage Camp Youth

Write an original play! Campers will be guided through writing their own lines, creating plot, characters and setting. They will work together to explore narrative structure, character development, conflict, and movement. A sharing will be held on the last day of camp if possible. **Ages 8-12.**

**Registration:** [educationaltheatrecompany.org](http://educationaltheatrecompany.org)  
**Location/Session 8:** 3700 S. Four Mile Run Dr.  
**Location/Session 9:** Lubber Run Amphitheater  
**Sessions:** 8-9  
**Core Camp Hours:** 9am-3pm  
**Extended Hours:** 3-5pm  
**Core Fee:** \$630  
**Extended Hour Fees:** \$160  
**Contact:** [info@educationaltheatrecompany.org](mailto:info@educationaltheatrecompany.org)

### Educational Theatre Co: Page to Stage Camp Teen

Counselors in Training (CIT), rising 7th graders and up, will assist groups in playwriting, design, and production, as well as participating in extended acting or directing daily intensives. A sharing will be held on the last day of camp if possible. **Ages 13-18.**

**Registration:** [educationaltheatrecompany.org](http://educationaltheatrecompany.org)  
**Location/Session 8:** 3700 S. Four Mile Run Dr.  
**Location/Session 9:** Lubber Run Amphitheater  
**Sessions:** 8-9  
**Core Camp Hours:** 9am-3pm  
**Extended Hours:** 3-5pm  
**Core Fee:** \$630  
**Extended Hour Fees:** \$160  
**Contact:** [info@educationaltheatrecompany.org](mailto:info@educationaltheatrecompany.org)

### Educational Theatre Co: Acting Out: Teen Intensive

Hone your acting and directing techniques by diving into scene study! Counselors in Training (CIT), rising 7th graders and up, will create dynamic characters, master audition techniques, and learn fundamental scene analysis. A sharing will be held on the last day of camp if possible. **Ages 13-18.**

**Registration:** [educationaltheatrecompany.org](http://educationaltheatrecompany.org)  
**Location:** 3700 S. Four Mile Run Dr.  
**Session:** 10  
**Core Camp Hours:** 9am-3pm  
**Extended Hours:** 3-5pm  
**Core Fee:** \$365  
**Extended Hour Fees:** \$80  
**Contact:** [info@educationaltheatrecompany.org](mailto:info@educationaltheatrecompany.org)

### Jane Franklin Dance

#### Jane Franklin Dance: Magic Butterfly

Excitement is as easy as the wave of a wand. Explore the dynamic elements of change and the

butterfly life cycle through movement, theater and art. Perform for family and friends by the end of the week. **Ages 7-11.**

**Registration:** [janefranklin.com](http://janefranklin.com)  
**Location:** 3700 S. Four Mile Run Dr.  
**Session:** 1  
**Core Camp Hours:** 9am-3pm  
**Extended Hours:** 3-5pm  
**Core Fee:** \$325  
**Extended Hour Fees:** \$100  
**Contact:** 703.933.1111 or [janefranklindance@gmail.com](mailto:janefranklindance@gmail.com). Discount for C.I.T ages 12-14.

#### Jane Franklin Dance: Here Comes the Parade

Get creative with movement, theater and art to make big discoveries about repetition, patterns, small changes for big fun. Perform for family and friends by the end of the week. **Ages 6-10.**

**Registration:** [janefranklin.com](http://janefranklin.com)  
**Location:** 3700 S. Four Mile Run Dr.  
**Session:** 2  
**Core Camp Hours:** 9am-3pm  
**Extended Hours:** 3-5pm  
**Core Fee:** \$325  
**Extended Hour Fees:** \$100  
**Contact:** 703.933.1111 or [janefranklindance@gmail.com](mailto:janefranklindance@gmail.com). Discount for C.I.T ages 12-14.

#### Jane Franklin Dance: Camp Cupcake

Have a sweet tooth? Take in delicious movement and art that tingles your senses. Show your luscious explorations to family and friends by the end of this sprightly four day and festive post-holiday camp. **Ages 5-9.**

**Registration:** [janefranklin.com](http://janefranklin.com)  
**Location:** 3700 S. Four Mile Run Dr.  
**Session:** 3  
**Core Camp Hours:** 9am-3pm  
**Extended Hours:** 3-5pm  
**Core Fee:** \$260  
**Extended Hour Fees:** \$75  
**Contact:** 703.933.1111 or [janefranklindance@gmail.com](mailto:janefranklindance@gmail.com). Discount for C.I.T ages 12-14.

#### Jane Franklin Dance: Fantastic Animals

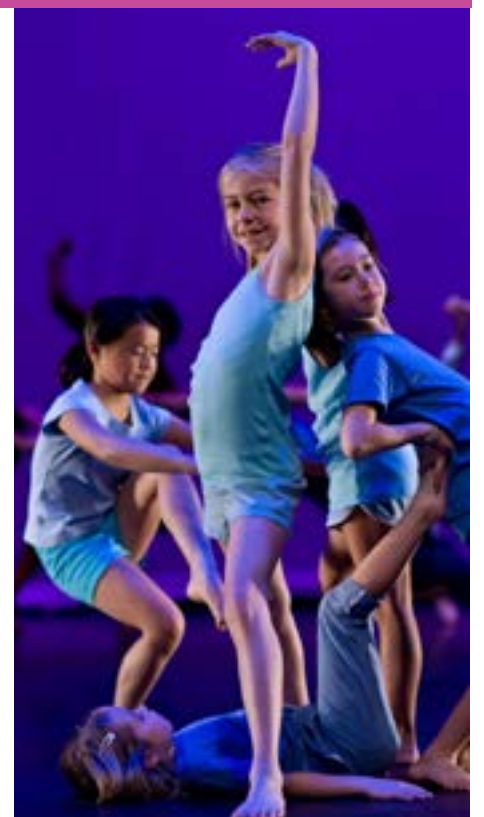
Be inspired by the movement and sounds of animals. Create an imaginary world of furry friends through movement, theater and art. Perform for family and friends by the end of the week. **Ages 6-11.**

**Registration:** [janefranklin.com](http://janefranklin.com)  
**Location:** 3700 S. Four Mile Run Dr.  
**Session:** 4  
**Core Camp Hours:** 9am-3pm  
**Extended Hours:** 3-5pm  
**Core Fee:** \$325  
**Extended Hour Fees:** \$100  
**Contact:** 703.933.1111 or [janefranklindance@gmail.com](mailto:janefranklindance@gmail.com). Discount for C.I.T ages 12-14.

#### Jane Franklin Dance: Splatter

Emotions are associated with color in this adventure through movement, theater and visual art. Explore a variety of dance styles and perform for family and friends by the end of the week. **Ages 7-11.**

**Registration:** [janefranklin.com](http://janefranklin.com)  
**Location:** 3700 S. Four Mile Run Dr.  
**Session:** 7  
**Core Camp Hours:** 9am-3pm  
**Extended Hours:** 3-5pm  
**Core Fee:** \$325  
**Extended Hour Fees:** \$100  
**Contact:** 703.933.1111 or [janefranklindance@gmail.com](mailto:janefranklindance@gmail.com). Discount for C.I.T ages 12-14.



#### Jane Franklin Dance: Why Do Cicadas Scream?

Explore the cicada life cycle and themes of transformation and change through movement, theater and art. Perform for family and friends by the end of the week. **Ages 5-9.**

**Registration:** [janefranklin.com](http://janefranklin.com)  
**Location:** 3700 S. Four Mile Run Dr.  
**Session:** 8  
**Core Camp Hours:** 9am-3pm  
**Extended Hours:** 3-5pm  
**Core Fee:** \$325  
**Extended Hour Fees:** \$100  
**Contact:** 703.933.1111 or [janefranklindance@gmail.com](mailto:janefranklindance@gmail.com). Discount for C.I.T ages 12-14.

#### Jane Franklin Dance: Fantastic Voyage

Embark on a creative journey of movement, theater and visual art. Whether it's camping, outer space, high in the mountains or in a haunted house, you'll develop a show for family & friends by the end of the week. **Ages 7-11.**

**Registration:** [janefranklin.com](http://janefranklin.com)  
**Location:** 3700 S. Four Mile Run Dr.  
**Session:** 9  
**Core Camp Hours:** 9am-3pm  
**Extended Hours:** 3-5pm  
**Core Fee:** \$325  
**Extended Hour Fees:** \$100  
**Contact:** 703.933.1111 or [janefranklindance@gmail.com](mailto:janefranklindance@gmail.com). Discount for C.I.T ages 12-14.

#### Jane Franklin Dance: Big Meow

Perfect for kids who love cats! Follow an inspiring storyline to explore your inner cat and the need for belonging through movement, theater and visual art. At the end of the week perform for family and friends. **Ages 5-10.**

**Registration:** [janefranklin.com](http://janefranklin.com)  
**Location:** 3700 S. Four Mile Run Dr.  
**Session:** 10  
**Core Camp Hours:** 9am-3pm  
**Extended Hours:** 3-5pm  
**Core Fee:** \$325  
**Extended Hour Fees:** \$100  
**Contact:** 703.933.1111 or [janefranklindance@gmail.com](mailto:janefranklindance@gmail.com). Discount for C.I.T ages 12-14.

These camps will register your child(ren) through their separate registration process noted in each of the camps listed.



# The YMCA has a **VARIETY** of summer camp offerings this year!

At the time of publication, the Y website included the following traditional, specialty and sports camps. For the most up to date information, please visit:

<https://www.ymcadc.org/programs/camps/day-camp/>

## TRADITIONAL CAMPS: June 21-September 3

**The Y Traditional Camps** will provide children with the opportunity to engage in fun activities including arts and crafts, STEM, dance, outdoor play and sports while following local guidance and in small groups. Traditional camps will operate from 8:30 am to 5:30 pm with the option of Before and After Care.

## SPORTS CAMPS: June 21-August 20

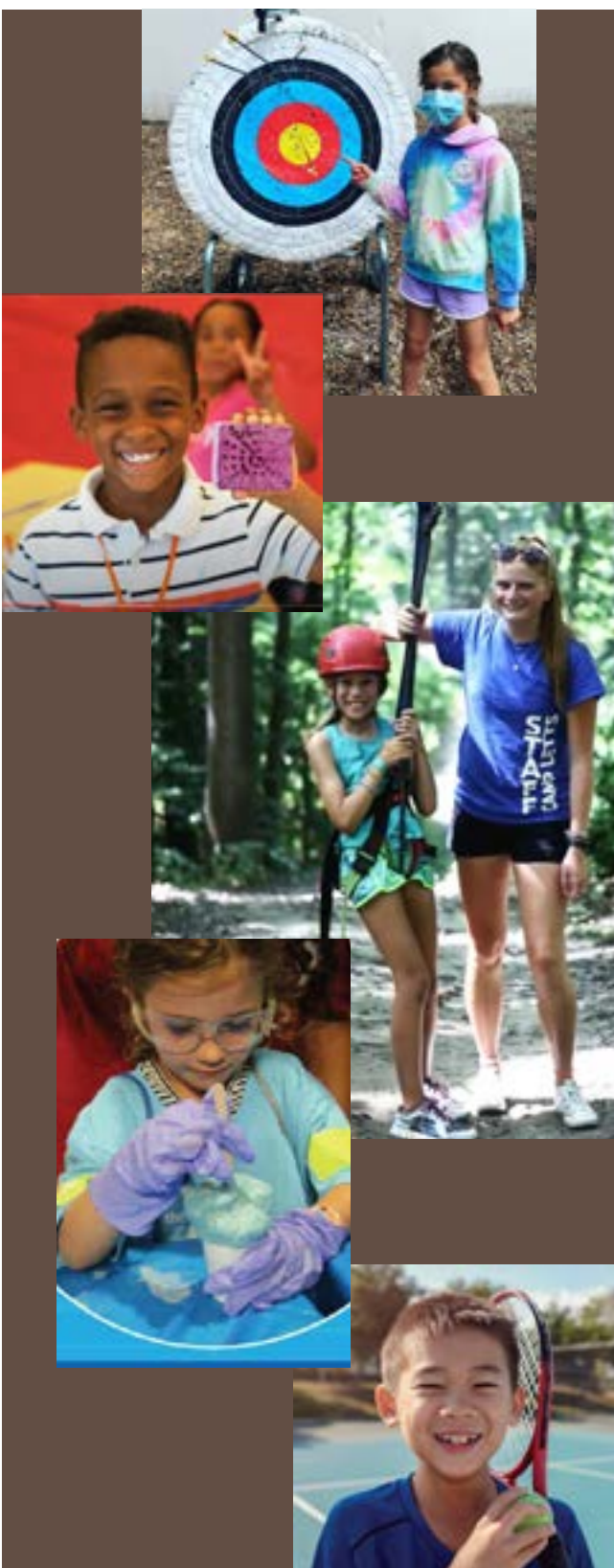
**Soccer:** Activities include individual foot skills, technical drills, tactical practices, small-sided games, coached scrimmages, and World Cup tournaments.

**Flag Football:** No getting cut and no bench warmers! In flag football, campers can make new friends while learning new techniques.

**Basketball:** Campers will spend part of the day learning and practicing basketball fundamentals: dribbling, shooting, passing, fast breaks, ball handling, and the importance of teamwork.

## SPECIALTY CAMPS: June 21-September 3

**Lego Robotics:** Explore the wonderful world of robots. Students will create, build and program robots that can walk, run, make music, dance, and complete an obstacle course. Use LEGO sets to explore, investigate, experiment, question and build engaging hands-on science activities.



Teachers! Counselors! College Students! Coaches! Artists! Therapists! Naturalists!

# HELP WANTED: *you!*

## Want to have a blast this summer and make money doing it?

Arlington County is looking for creative, enthusiastic, committed, sincere individuals who want to have fun to staff our summer camps. These are part-time to full-time temporary positions at a competitive salary. Great for teachers, college students, and anyone who wants experience working with the best kids in the nation... Arlington kids! You can also support special interest in the arts, nature, sports or working with campers with disabilities. Interested? Go to [parks.arlingtonva.us](https://parks.arlingtonva.us), search *Summer Employment*.

### Your Qualities:

- Creative
- Committed
- Enthusiastic
- Sincere

### Our Benefits:

- Full/Part-Time/Temp
- Competitive Salary
- Fun!
- Rewarding



Due to ongoing health and safety concerns related to the COVID-19 pandemic, Arlington Parks & Recreation has suspended our Volunteer Program for Summer Camp 2021. For other volunteer options this summer go to our [Parks & Recreation volunteer site](https://parks.arlingtonva.us) or visit Volunteer Arlington, for a list of local opportunities.



# SUMMER CAMPS

## What's New in 2021?

Summer Camps are back in Arlington. More of the wonderful things you love, but with changes to enhance safety and consistency. Families and campers have the option to participate in a wide variety of camps, both indoors and outdoors, based on your interest and comfort. See the [searchable tool](#) for a reference of camp programs that are Indoor Only, Outdoor Only, or Indoor/Outdoor.

Summer camps follow guidance from the Centers for Disease Control and Prevention, the Virginia Department of Social Services, Forward Virginia: Guidelines and the American Camp Association.

We will offer indoor as well as outdoor camp programs.

- Indoor camps will run rain or shine. They will be held in community centers and schools.
- Outdoor camps may be limited due to weather or field closures. These camps are run in parks, or on tennis courts or fields.

All summer camp registration will take place on the Department of Parks and Recreation (DPR) Registration website: [registration.arlingtonva.us](https://registration.arlingtonva.us) (unless otherwise noted in the catalog).

DPR will host **Parent Information Nights** to answer questions regarding camp registration and camp safety protocols, on Wed., [March 17](#) and Thur., [March 18](#) from 6:30-7:30pm. Information will be identical each night, please select one to attend. Learn more and submit questions on the event page links noted above.

## What to Expect This Summer

Campers and staff are required to wear masks throughout the camp day, pursuant to the current state-issued guidance, apart from mealtimes and mask breaks.

Camps will be following enhanced cleaning and sanitation protocols.

Group sizes will be assessed at each camp to allow for maximum participation while still maintaining either 6 or 10 ft. social distance, based upon the type of activity.

All camp activities will be modified to increase distancing and to meet sanitation requirements.

COVID-19 screening via contactless questionnaires and temperature checks will be given at the start of every camp.

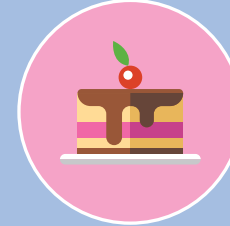
To limit the number of people gathering, we are implementing touch-free sign-in, outside of camp entrances.

There are limited camps with extended hours, to reduce contact between camp groups.

Campers or staff members who show signs of illness during the camp day will be isolated until they can be picked up.

Staff will ensure campers have limited contact with the public in shared areas such as walkways, hallways, restrooms, etc.

To stay up to date - visit our [Summer Camp web page](#)





# WHEN & HOW TO REGISTER *for Arlington County Camps*

## When to Register



### Online



**Registration for Residents begins at 7am on 3/24/2021**

**Out-of-County Resident Registration begins at 8am on 3/31/2021 (Online & Phone)**

- Go to [registration.arlingtonva.us](https://registration.arlingtonva.us), log in and follow the steps.
- Complete and submit all appropriate paperwork at least two weeks prior to the start date; registration will be cancelled otherwise.
- The only accepted online method of payment is credit card: Visa, Mastercard or Discover.



### Mail-In

**Resident Processing begins at 7am on 3/24/2021. These forms must be received by 5pm, 3/23/2021.**

- Complete Registration Form, Participant Information Record (p.26) and other required forms. Registrations won't be processed if the complete paperwork is not submitted.
- You can mail in a payment using a credit card, check and money order. (Checks should be made payable to "Treasurer, Arlington County" and include registrant's name, address, phone number, current date and must be signed. Returned checks are subject to a \$50 fee.)
- Mail to:  
Department of Parks and Recreation  
3700 S. Four Mile Run Drive, Arlington, VA 22206



### Carry-In\*

**\*Only at Thomas Jefferson Community Center, 8am-5pm on 3/26/2021**

- Complete Registration Form, Participant Information Record (p.26) and other required forms. Registrations won't be processed if the complete paperwork is not submitted.
- In-person payment can be a credit card, check, Money Order and cash. (Checks should be made payable to "Treasurer, Arlington County" and include registrant's name, address, phone number, current date and must be signed. Returned checks are subject to a \$50 fee.)
- On March 26, bring registration forms to Thomas Jefferson Community Center, 3501 S. 2nd St. 22204 between 8am-5pm.



### Phone-In

**Begins at Noon on 3/24/2021 for Residents.**

- Before calling, complete and submit the Participant Information Record (p.26) and other required forms in advance to [registration@arlingtonva.us](mailto:registration@arlingtonva.us). Registration won't be processed if the complete paperwork is not submitted. NO EXCEPTIONS.
- Call the registration office 703.228.4747 with credit card information and camp codes on hand, Monday-Friday, 8am-5pm.
- Phone registration can only be paid with a credit card: Visa, Mastercard, or Discover.

## Out-of-County Residents

Residents of other counties may register for Arlington County camps begins March 31, 2021. Out-of-County residents pay 15% more than the fees listed in the catalog, including Arlington Public School employees.

## How to Register

**Make your online registration a success by preparing BEFORE the registration period begins.**

1. **Choose your preferred options** for Summer Camps and note the activity number and session number. Camp codes are shown with each Arlington County camp listing.
2. **For online registration, go to [registration.arlingtonva.us](https://registration.arlingtonva.us)** starting on March 24. For help with online processing check out "Online Registration Tips & Tricks for Success". Please note that households with an overdue balance from previous camps or classes must pay off their balance before registering a child for camp.
3. **Complete and sign** participant information/emergency record found at <https://egov.Arlingtonva.us/campforms> and page 26 of this catalog. Preschool Camps will require additional paperwork. For more information on these forms and medication forms, visit [parks.arlingtonva.us/programs/camps/forms](https://parks.arlingtonva.us/programs/camps/forms). All forms must be submitted online or received by our registration office before the Monday one week prior to the start of camp. After this deadline, please contact the Department of Parks and Recreation at 703-228-4747.

## Online Registration Tips & Tricks for Success!

### Set up your account before March 24, 2021

If this is the first time you will be registering for a camp or class, or if you have forgotten your User ID and/or Password, go to [registration.arlingtonva.us](https://registration.arlingtonva.us); under login, click on "Create Account" or "Forgot User ID/Password for help and follow the instructions. If you require additional assistance creating an account or retrieving your Login ID and Password, contact the Registration Office at 703.228.4747.

### Review your account before March 24, 2021

Check the information we have about your account online to be sure we have your household listed correctly (email and phone) and all family members are listed. Verify birth-dates of children, as age restrictions are enforced during online registration. Our camps are operated in compliance with state regulations. Children who are found to be under or over the age restrictions of a camp will be removed, unless approved for participation in advance by the program director. If you have forgotten your username or password, refer to the previous paragraph. For assistance contact the Registration Office at 703.228.4747, Monday to Friday, 8am-5pm or at [registration@arlingtonva.us](mailto:registration@arlingtonva.us). Please note that only primary guardians will be able to add family members or request information on the account.

### Be prepared to register ON or after March 24, 2021

You will speed through the online registration process if you have the information you need at your fingertips when registering online.

- **Know your username and password.**
- **Know the camps, camp codes, and sessions** you want. Have second-choice options ready in case you are wait listed for your first choice.
- **After you log in, use the Summer Camp menu** to search for camps and read any important summer camp updates. To register for a camp, click on the Shopping Cart icon to the left of the camp name on the Search screen. If the camp offers extended hours, you will be asked if you would like to register for them.
- **Have your credit card information handy.** Arlington County accepts Visa, Master Card, and Discover.
- **If you have questions** about the online registration process, contact the Registration Office at 703.228.4747, [registration@arlingtonva.us](mailto:registration@arlingtonva.us) before March 23 for the fastest service.

## Waitlists

Arlington County camps are very popular. The sooner you register the more likely you will get the spot you want. Registrations will be processed to accommodate first and second choices. If an opening is not available, you can be placed on the wait list. Arlington County coordinators use waitlists to make decisions, and the County process many cancellations throughout the summer; therefore, there is a good chance that you can obtain a spot if you are placed on a waitlist early. Please do not call registration to ask the likelihood to obtain a spot; waitlist enrollments depend on the number of enrollees that cancel their spot. You can check your place in the waitlist by logging into your account online ([registration.arlingtonva.us](https://registration.arlingtonva.us)) and selecting "My Account," "Print Household Roster," and Submit. Online registration confirmations can be printed using Adobe Acrobat 6.0 or higher, but enrollment is not confirmed until all paperwork is received.

## Late Registrations & Forms

All required paperwork must be received no later than 5pm the Monday prior to the camp week or campers may not be allowed to participate and no refunds will be processed. Registrations will be accepted up to the Monday prior to the camp start date, if space is available. For late registrations, all documents must be delivered to the Registration Office, and a Summer Camp Ticket will be provided to the parent. It is the parent's responsibility to take this Camp Ticket to the first day of camp and give it to camp staff to be admitted to camp. Without the Camp Ticket with the missing paperwork attached, the camper will not be allowed to stay at camp.

## Campers with Disabilities

Parents and guardians can request modifications / accommodations through our Therapeutic Recreation Office (phone: 703.228.4740 and email: [TRinfo@arlingtonva.us](mailto:TRinfo@arlingtonva.us)) in advance of the camp session. If a child requires frequent reminders to participate, follow directions or stay with the group; requires assistance with dressing, feeding or toileting; or needs support in managing emotions please note this on the Camp Participant Information/ Emergency Record form. There is no additional fee for this service. This additional information is important in order to provide modifications so that every participant will be successful in the chosen program.

## Fee Reductions

### ACCESS FOR ALL

Parks & Recreation camps, classes and more at a price you can afford! Our fee reduction program helps Everyone, Everywhere, Every Day! Access for All. Easy to apply! Whether you have a short-term setback or something longer-term. Learn more [here](https://parks.arlingtonva.us/fee-reductions/) (<https://parks.arlingtonva.us/fee-reductions/>) or call 703.228.4747. All participants must submit fee reduction applications **prior to registration**, since discounts are not retroactive. Fee reductions are available on a sliding scale based on household income and size.

## Registration Cancellations, Transfers & Refunds

All refunds are subject to a \$20 cancellation fee; per camper, per service interaction. Payment is not based on attendance; it is the responsibility of the guardian to cancel if the camper won't attend. All registration changes (transfers/cancellations/refunds) are processed by the Registration Office ONLY and not camp or community center staff. **Deadline to make any changes to camp registrations is 5pm the Monday prior to the camp start. No refunds will be issued for cancellations requested after that deadline.** All changes are finalized only when a receipt is generated by our system. Once a change is made, please read and note your receipt number, since registrants will be held responsible for payment.



# Arlington County 2021 SUMMER CAMP REGISTRATION FORM

Register Online at [registration.arlingtonva.us](http://registration.arlingtonva.us) Click on Register for Classes & Camps. Camps not run by Arlington County must register using the information on the bottom of the camp listing.

HH ID# \_\_\_\_\_

## Adult Responsible for Payment

First Name \_\_\_\_\_ Last Name \_\_\_\_\_ Email \_\_\_\_\_

Day Phone (\_\_\_\_) \_\_\_\_\_ Evening Phone (\_\_\_\_) \_\_\_\_\_ Cell Phone (\_\_\_\_) \_\_\_\_\_

Street Address \_\_\_\_\_ City \_\_\_\_\_ State \_\_\_\_\_ Zip \_\_\_\_\_

## Child Being Registered

First Name \_\_\_\_\_ Last Name \_\_\_\_\_

Grade \_\_\_\_\_ Birthday \_\_\_\_\_ / \_\_\_\_\_ / \_\_\_\_\_ Sex \_\_\_\_\_

Please fill in camp codes below. Insert the six-digit code associated with the Arlington County camp into the first or second choice for each session you desire. Children must be registered for the core program hours to register for extended hours. Not all camps provide Extended Hours. You will need these same seven-digit codes to register online. If you wish to register for a camp that is not an Arlington County Camp and does not have a 6-digit camp code, please follow the registration instructions contained in the camp listing. *As of date of publication information regarding summer camp offerings is as up to date as possible. Please check the website for updates to locations or session offerings prior to registering. For active enrollments, you will be notified of any changes.*

## First Choice

## Second Choice

Week	Camp Code	Extended Hours	Week	Camp Code	Extended Hours
1	_____ - 01	__AM__PM	1	_____ - 01	__AM__PM
2	_____ - 02	__AM__PM	2	_____ - 02	__AM__PM
3	_____ - 03	__AM__PM	3	_____ - 03	__AM__PM
4	_____ - 04	__AM__PM	4	_____ - 04	__AM__PM
5	_____ - 05	__AM__PM	5	_____ - 05	__AM__PM
6	_____ - 06	__AM__PM	6	_____ - 06	__AM__PM
7	_____ - 07	__AM__PM	7	_____ - 07	__AM__PM
8	_____ - 08	__AM__PM	8	_____ - 08	__AM__PM
9	_____ - 09	__AM__PM	9	_____ - 09	__AM__PM
10	_____ - 10	__AM__PM	10	_____ - 10	__AM__PM
11	_____ - 11	__AM__PM	11	_____ - 11	__AM__PM

Would you like to be contacted about: (check all that apply): ☐ Therapeutic Recreation support due to a disability ☐ Special accommodation/modification

## Payment

### Check here if you wish to pay by check or money order

You can pay by e-check online or include a check or money order with your registration form. Checks and Money Orders should be made payable to Treasurer, Arlington County. For security purposes, check and money orders will be processed upon receipt, for the amount of your enrollment and the amount added as a credit on your account until your registration is processed. If you are waitlisted for a class and would like a refund, please call the Registration Office at 703.228.4747

### Check here if you wish to pay with a credit card online

Upon successful enrollment, a receipt will be sent to your email address on file. You can then sign-on to your account online and pay the balance due

### Check here if you would like a member of our staff to contact you

To make payment arrangements

Mail early to ensure your choice of camps. Send this form with payment to:

**Main Registration Office**  
**3700 S. Four Mile Run Drive**  
**Arlington, VA 22206**

NOTE: Payment for these classes are due by 5pm, the day of this enrollment. If staff are not able to reach you for payment, or you do not pay your balance due online directly, your enrollment will be cancelled.

Deadline to make any changes to your registration is 5pm the Monday prior to camp week and are subject to a \$20 fee per camper, per service interaction. No refunds are possible after this deadline.



# Participant Information/Emergency Record

Member ID# \_\_\_\_\_  
(Staff Use Only)

Please note, registration is not complete unless this form is submitted to the Registration Office.

Camper's Name \_\_\_\_\_ Nickname \_\_\_\_\_ Gender \_\_\_\_\_ Birthday \_\_\_\_\_ / \_\_\_\_\_ / \_\_\_\_\_ Age \_\_\_\_\_  
Street Address \_\_\_\_\_ City \_\_\_\_\_ State \_\_\_\_\_ Zip \_\_\_\_\_  
School camper attends \_\_\_\_\_ Grade \_\_\_\_\_ Teacher \_\_\_\_\_  
Language spoken at home \_\_\_\_\_ Name of social worker \_\_\_\_\_  
Child's Physician \_\_\_\_\_ Phone Number \_\_\_\_\_  
Father/Guardian 1 Name \_\_\_\_\_ Place Employed \_\_\_\_\_  
Home Phone ( \_\_\_\_\_ ) \_\_\_\_\_ Work Phone ( \_\_\_\_\_ ) \_\_\_\_\_ Cell Phone ( \_\_\_\_\_ ) \_\_\_\_\_  
Mother/Guardian 2 Name \_\_\_\_\_ Place Employed \_\_\_\_\_  
Home Phone ( \_\_\_\_\_ ) \_\_\_\_\_ Work Phone ( \_\_\_\_\_ ) \_\_\_\_\_ Cell Phone ( \_\_\_\_\_ ) \_\_\_\_\_  
Parent/Guardian with legal custody of child \_\_\_\_\_ email \_\_\_\_\_  
Home address (if different from child) \_\_\_\_\_

Provide names and address of 2 contacts if parent / guardian cannot be reached.

Name \_\_\_\_\_ Address \_\_\_\_\_  
Home Phone ( \_\_\_\_\_ ) \_\_\_\_\_ Work Phone ( \_\_\_\_\_ ) \_\_\_\_\_ Cell Phone ( \_\_\_\_\_ ) \_\_\_\_\_  
Name \_\_\_\_\_ Address \_\_\_\_\_  
Home Phone ( \_\_\_\_\_ ) \_\_\_\_\_ Work Phone ( \_\_\_\_\_ ) \_\_\_\_\_ Cell Phone ( \_\_\_\_\_ ) \_\_\_\_\_

Persons authorized to pick up camper \_\_\_\_\_  
Persons NOT authorized to pick up camper \_\_\_\_\_

(attach copy of divorce decree or other appropriate paperwork if parent is not allowed to pick up child)

Information & Characteristics	Yes	No	Explanation & Comment:
Allergies	<input type="radio"/>	<input type="radio"/>	_____
Medications	<input type="radio"/>	<input type="radio"/>	Type & Dosage: _____
Seizures	<input type="radio"/>	<input type="radio"/>	_____
Dietary restriction	<input type="radio"/>	<input type="radio"/>	_____
Physical limitations/restriction	<input type="radio"/>	<input type="radio"/>	_____
Chronic conditions/illnesses	<input type="radio"/>	<input type="radio"/>	_____
Any unusual fears	<input type="radio"/>	<input type="radio"/>	_____
Easily upset	<input type="radio"/>	<input type="radio"/>	_____
Physically aggressive (includes difficulty controlling temper)	<input type="radio"/>	<input type="radio"/>	_____
Withdrawn, shy	<input type="radio"/>	<input type="radio"/>	_____
Hyperactive	<input type="radio"/>	<input type="radio"/>	_____

Would you like to be contacted about (check all that apply):

- ☐ Therapeutic Recreation support due to a disability  
☐ Special accommodation/modification?

PLEASE PLACE AN X IN THE BOX THAT INDICATES YOUR CHILD'S SWIMMING LEVEL.

- ☐ Non-swimmer (must stay in water that is not over shoulders)  
☐ Intermediate (allowed to swim in entire pool except diving area)  
☐ Advanced (allowed to swim in entire pool including diving area)

Please note that all campers desiring to swim outside the non-swimmer designated area will be given a swim test upon entering the water. For more information about swim levels see the parent handbook at [www.arlingtonva.us](http://www.arlingtonva.us), search "Parent Handbook."

## Agreement to Release Assumption of Risk, Agreements to Hold Harmless

The undersigned is aware that there are certain risks involved in participating in the Summer Camp Program including but not limited to the risk of theft or damage to my property and the risk of personal injury from participation in recreation activities. In consideration of my being granted permission to participate in these activities and to use the facilities of the County and/or other activities and services provided by Arlington County Department of Parks and Recreation, its agents and employees, including food service, I, on behalf of myself, my executors, administrators, heirs, next of kin, and successors, hereby covenant to hold harmless and indemnify the County and all its officers, departments, agencies, and employees from any and all claims, lessees, damages, injuries, fines, penalties, and costs (including court costs and attorney's fees), charges liabilities, or exposures, however caused, resulting from or arising out of or in any way connected to my or my family's participation in the Summer Camp Program. I have read and understand this Hold Harmless Agreement and by my signature agree to its terms. I hereby give my child/ward permission to go on the field trips during this program. I understand that I will be informed in advance of any field trips. The camp agrees to notify the parent/guardian whenever the child becomes ill and the parent/guardian will arrange to have the child picked up as soon as possible. The parents/guardian authorizes the Camp to obtain immediate medical care if an emergency occurs when he/she cannot be reached immediately. If my child passes an intermediate or advanced swimming competency test administered by the pool staff, then he/she has my permission to swim in the deep end and the shallow end of the pool.

Parent/Guardian Signature \_\_\_\_\_ Date: \_\_\_\_\_

## Photo Release

I hereby give my permission without restriction to Arlington County and its assignees to photograph or videotape my child during participation in Summer Camp Programs. I specifically waive any rights to compensation with respect to my child's name, likeness, picture and/or voice. The purpose of this release is to facilitate publicity for County programs.

Parent/Guardian Signature \_\_\_\_\_ Date: \_\_\_\_\_

## Registration Policy Agreement

I have read, understand and agree to the payment, refund and changes in registration policies in this brochure.

Parent/Guardian Signature \_\_\_\_\_ Date: \_\_\_\_\_

PIRs and additional preschoolers forms are required by law for all Little Explorers participants. All required paperwork must be received no later than 5pm the Monday prior to the camp week or campers will not be allowed to participate and no refund will be processed. If you register your child after this deadline, you will need to do so in person. A "Camp Ticket" will be provided to the parent to hand to camp staff the first day of camp or camper will not be admitted.





**FUN • FOOD • GAMES • RIDES**  
**• VIRTUAL ACTIVITIES •**  
**EXHIBITS • COMMUNITY • URBAN ADVENTURE**

# **ARLINGTON COUNTY FAIR!**

## **AUGUST 18-22, 2021**

**Thomas Jefferson Community Center**  
**3501 2nd Street South, Arlington, VA 22204**

**ARLINGTONCOUNTYFAIR.US**

