

Make your own Bottle Rocket

Here is your chance to build your own bottle rocket like a pro. It's simple and all you need is items around your house. Challenge a friend or family member, or just do one as a family.

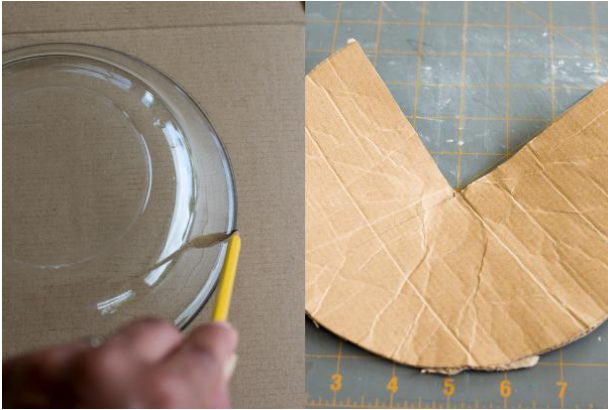
It's easy to create a bit of backyard fun with recyclables. The kids will get a blast out of these simple bottle rockets that they can modify, decorate and launch in less than half an hour from start to finish. Get ready to create fun summertime memories in 3, 2, 1...



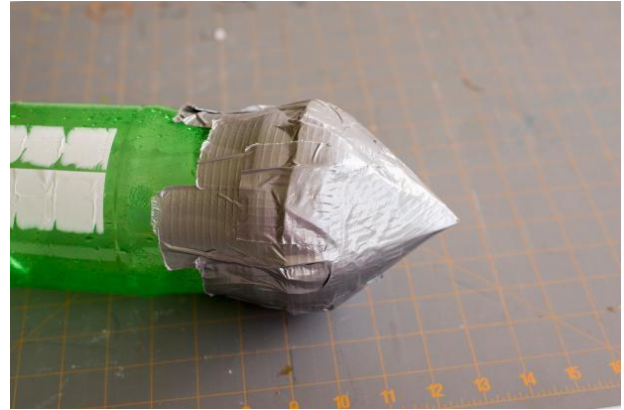
Supplies

- empty two-liter soda bottle
- wine cork
- Playdoh
- duct tape
- utility knife
- Cardboard
- bike pump
- paint

Make the Nose Cone



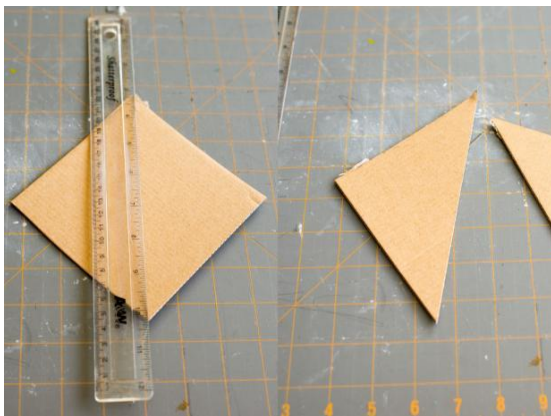
In its



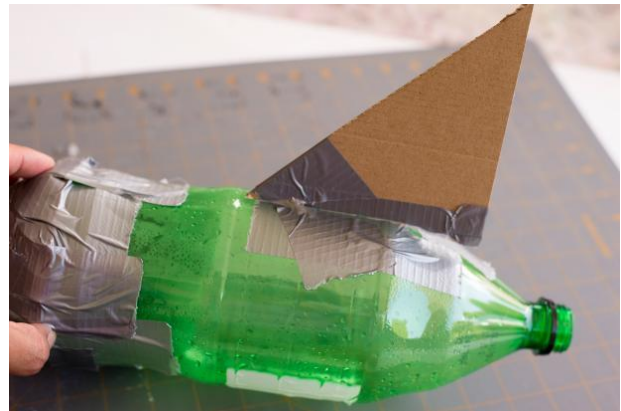
simplest form, a regular two-liter bottle can be launched as is. But, why have a boring rocket? Let's make this bottle look like a *real* rocket.

1. Start off by making its nose cone. Use a plate or low bowl to trace a circle about 8 inches in diameter.
2. Cut away a 1/4 of it so you can roll it into a cone shape.
3. Wrap the cardboard cone around the base of the two-liter bottle. Secure with duct tape.

Make the Fins



This can



part be

adjusted to your liking. We chose to use four fins, but you can use just three if you like.

1. Cut out a 6 x 6 inch square and cut it evenly in half to get two right triangles. Make another set.
2. Tape the fins to the sides of the bottle, spaced evenly apart.

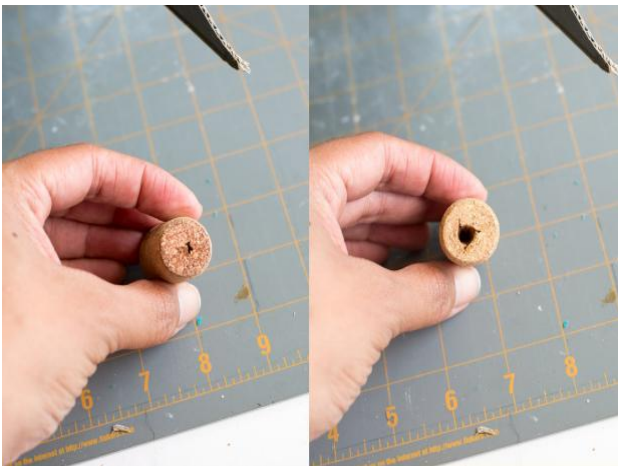
Add the Ballast



You need to add a ballast to give the rocket some weight. Without it, the bottle will fly erratically.

1. Mold about half a cup of Playdoh to the ridges on the bottom of the bottle. Form a rounded end on the outside of the bottle.
2. Cover it with duct tape to keep it secure.

Make the Cork Stopper



1. Make a very small hole through a cork. This will allow the air to be pumped into the rocket. On one end of the cork make sure the hole is the same size as the valve of your bicycle pump valve.
2. Stuff the cork into the bottle opening. Place the valve of a bicycle pump into the opening of the cork. Make sure it fits into the cork tightly. Remove the cork and paint the rocket if you want.

Launch Time!

Before you launch the rocket, make sure you are in an open, outdoor area. The rocket will shoot up very fast and high. Remove any obstructions and warn anyone around you before you launch it.



Fill the bottle about 1/3 of the way with water.

Insert the cork and bike pump valve.



Use rocks or bricks to help keep the rocket upright on the launch pad.



Slowly pump air into the rocket. The rocket will go off when the cork can no longer withstand the pressure building up in the bottle

Launch Away!!!!



Source of Pictures: [OddityMall](https://www.odditymall.com/)