



Employment Facts and Statistics

Office of Economic Opportunity
Veterans Benefits Administration
BLS Figures (non-seasonally adjusted)

August-17

Unemployment

Cohort (% of total)	Rate	Change	Level	Change	Non-Vets
National	4.4%	0.1%	7.1M	100,000	-
>27 Weeks			1.7M	100,000	-
All Veterans (100%)	3.7%	0.2%	374,000	18,000	4.4%
Male	3.4%	-0.2%	307,000	-14,000	4.2%
Female	5.4%	2.5%	67,000	32,000	4.6%
Post-9/11 Veterans (37%)	4.2%	-0.4%	139,000	-14,000	-
Male	3.5%	-1.3%	99,000	-35,000	-
Female	7.4%	3.8%	40,000	21,000	-
18-24 Veterans (5%)	9.0%	-0.7%	17,000	2,000	8.1%
Male	3.8%	-7.6%	6,000	-13,000	8.6%
Female*	31.8%	-	11,000	-	7.6%
25-34 Veterans (23%)	6.2%	-1.0%	86,000	-14,000	4.9%
Male	6.3%	-1.0%	73,000	-11,000	4.6%
Female	5.8%	-0.9%	13,000	-2,000	5.3%
35-44 Veterans (12%)	2.3%	-0.9%	44,000	-18,000	3.5%
Male	1.5%	-2.3%	25,000	-37,000	3.2%
Female*	6.2%	-	20,000	-	3.8%
45-54 Veterans (22%)	3.2%	1.1%	83,000	28,000	3.8%
Male	3.1%	1.2%	70,000	27,000	3.4%
Female	3.7%	0.4%	14,000	2,000	4.1%
55+ Veterans (38%)	3.5%	0.4%	143,000	23,000	3.3%
Male	3.5%	0.4%	134,000	21,000	2.9%
Female	3.1%	0.4%	10,000	3,000	3.5%

* Does not meet BLS publication criteria

- 13,000 (6%) of all 18-54 Veterans (230,000) are enrolled in school either part time or full time

Unemployed by State Data

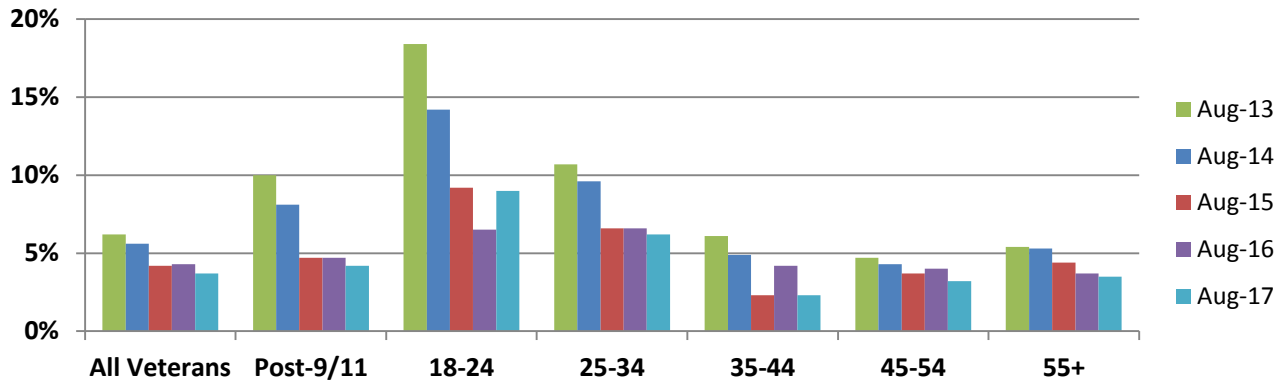
Highest Levels (37% of total)	Level	Highest Rates	Rate
California	35,000	Arizona	10.1%
Texas	30,000	Michigan	8.8%
Pennsylvania	27,000	Missouri	8.3%
Arizona	24,000	Indiana	7.2%
Michigan	23,000	New York	7.0%

* Does not meet BLS publication criteria

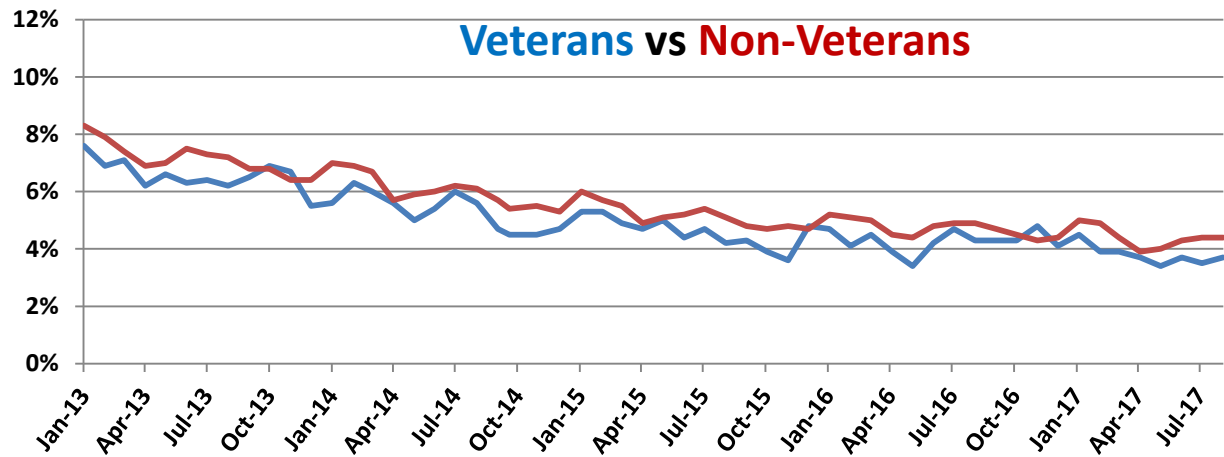
Employment Sectors

Sector	+/-	Sector	+/-
Manufacturing	36,000	Financial	Even
Construction	28,000	Transportation/Warehousing	Even
Professional/Business	22,000	Wholesale Trade	Even
Healthcare	20,000	Government	Even
Leisure & Hospitality	9,000	Retail	Even

Year-Over-Year Comparison



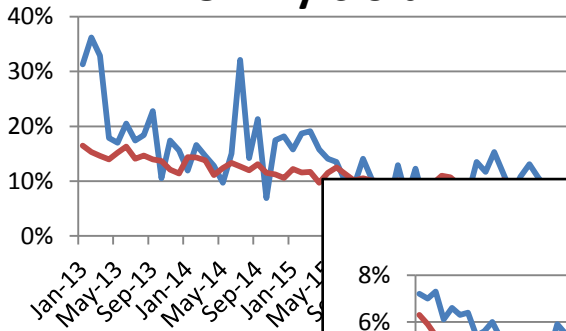
Veterans vs Non-Veterans



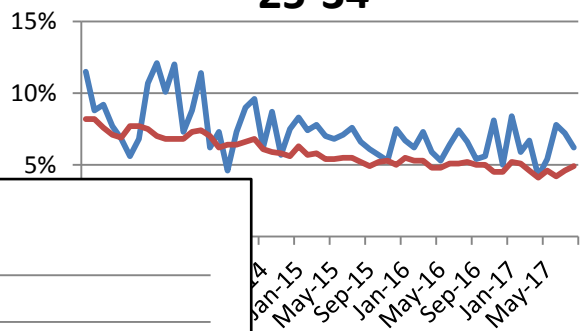
Vets / Non-Vets

Vets / Non-Vets

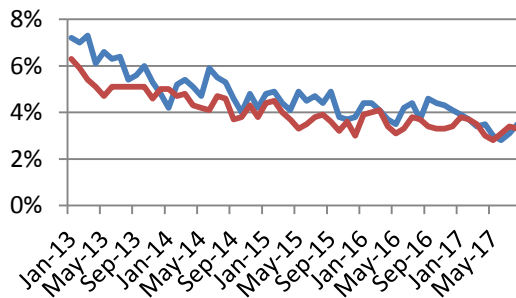
18-24 yrs old



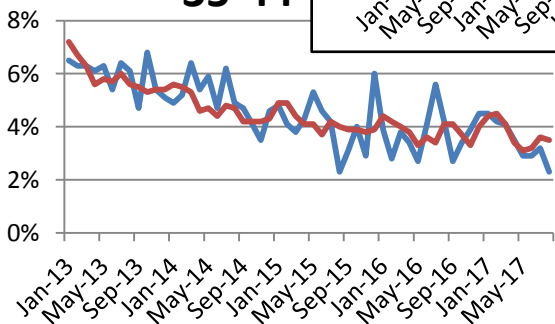
25-34



55+



35-44



45-54

