



## Employment Facts and Statistics

Office of Economic Opportunity  
 Veterans Benefits Administration  
 BLS Figures (non-seasonally adjusted)

### December-16

#### Unemployment

Cohort (% of total)	Rate	Change	Level	Change	Non-Vets
<b>National</b>	<b>4.7%</b>	<b>0.1%</b>	<b>7.5M</b>	<b>100,000</b>	-
>27 Weeks			1.8M	-100,000	-
<b>All Veterans (100%)</b>	<b>4.1%</b>	<b>-0.7%</b>	<b>424,000</b>	<b>-75,000</b>	<b>4.4%</b>
Male	4.2%	-0.2%	388,000	-18,000	4.7%
Female	3.0%	-4.4%	36,000	-58,000	4.0%
<b>Post-9/11 Veterans (45%)</b>	<b>5.7%</b>	<b>-0.8%</b>	<b>189,000</b>	<b>-27,000</b>	-
Male	5.9%	0.1%	167,000	4,000	-
Female	4.3%	-5.7%	22,000	-31,000	-
<b>18-24 Veterans (6%)</b>	<b>15.3%</b>	<b>3.6%</b>	<b>24,000</b>	<b>5,000</b>	<b>8.3%</b>
Male	15.1%	4.3%	21,000	6,000	9.8%
Female	16.3%	1.0%	3,000	-3,000	6.7%
<b>25-34 Veterans (17%)</b>	<b>5.0%</b>	<b>-3.1%</b>	<b>73,000</b>	<b>-45,000</b>	<b>4.5%</b>
Male	5.2%	-1.8%	65,000	-22,000	4.8%
Female	3.6%	-9.7%	8,000	-24,000	4.3%
<b>35-44 Veterans (21%)</b>	<b>4.5%</b>	<b>0.6%</b>	<b>89,000</b>	<b>13,000</b>	<b>4.0%</b>
Male	5.2%	1.3%	86,000	22,000	4.0%
Female	1.0%	-2.8%	3,000	-9,000	4.0%
<b>45-54 Veterans (17%)</b>	<b>2.6%</b>	<b>-1.3%</b>	<b>70,000</b>	<b>-36,000</b>	<b>3.4%</b>
Male	2.4%	-0.8%	59,000	-18,000	3.5%
Female	3.3%	-4.4%	12,000	-17,000	3.3%
<b>55+ Veterans (39%)</b>	<b>4.1%</b>	<b>-0.2%</b>	<b>167,000</b>	<b>-13,000</b>	<b>3.4%</b>
Male	4.2%	-0.1%	157,000	-7,000	3.6%
Female	3.3%	-2.0%	10,000	-6,000	3.1%

\* Does not meet BLS publication criteria

- 17,000 (7%) of all 18-54 Veterans (256,000) are enrolled in school either part time or full time

#### Unemployed by State Data

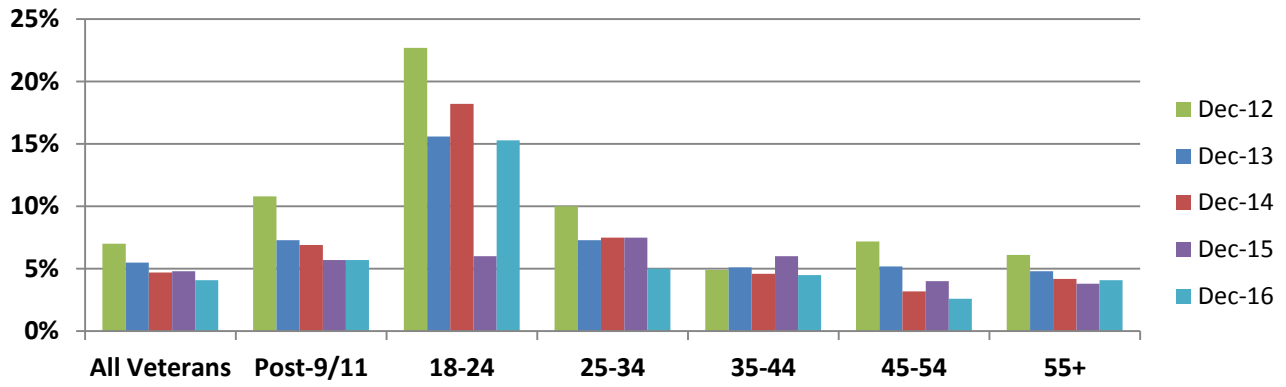
Highest Levels (35% of total)	Level	Highest Rates	Rate
California	42,000	Delaware	8.6%
Pennsylvania	31,000	Oregon	8.1%
North Carolina	27,000	West Virginia	7.9%
Texas	26,000	Pennsylvania	7.8%
Florida	24,000	Washington	7.7%

\* Does not meet BLS publication criteria

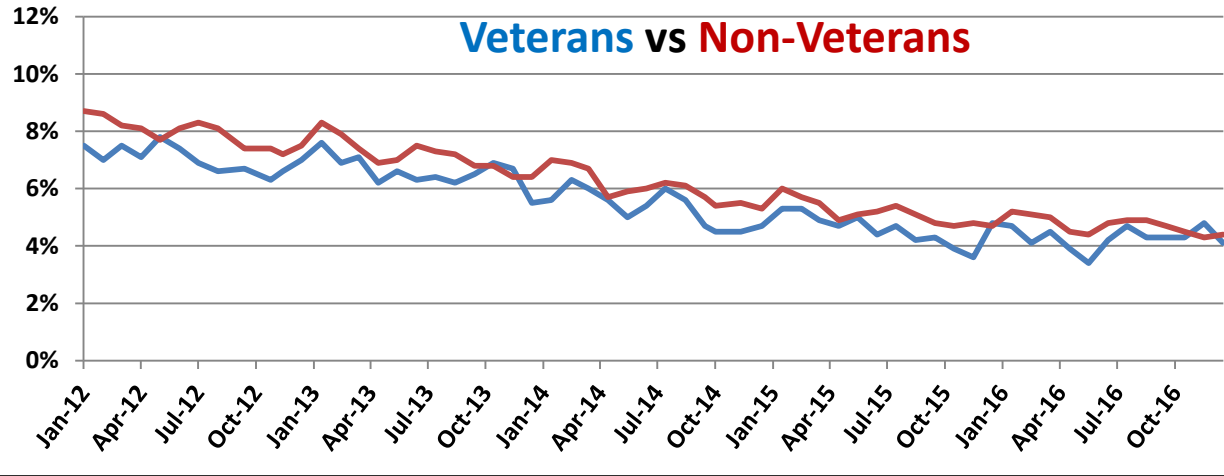
#### Employment Sectors

Sector	+/-	Sector	+/-
Healthcare	43,000	Financial	13,000
Leisure & Hospitality	30,000	Construction	Even
Manufacturing	17,000	Wholesale Trade	Even
Transportation/Warehousing	15,000	Government	Even
Professional/Business	15,000	Retail	Even

## Year-Over-Year Comparison



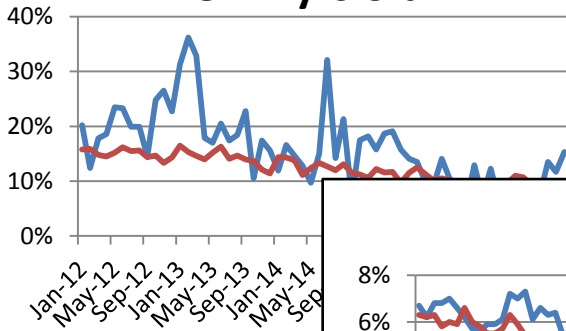
## Veterans vs Non-Veterans



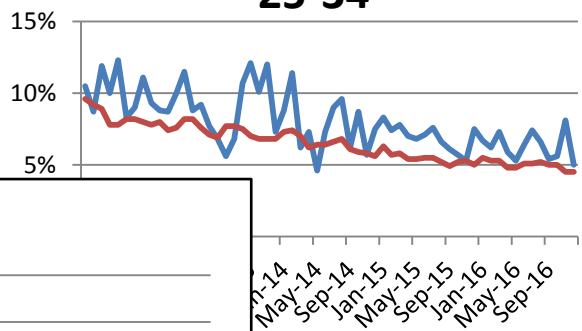
Vets / Non-Vets

Vets / Non-Vets

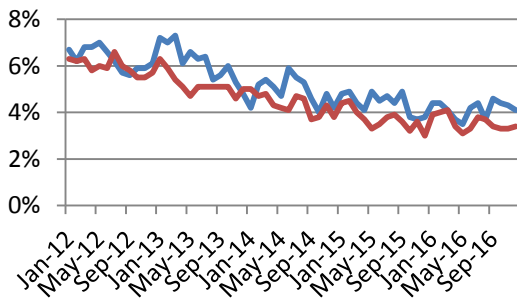
### 18-24 yrs old



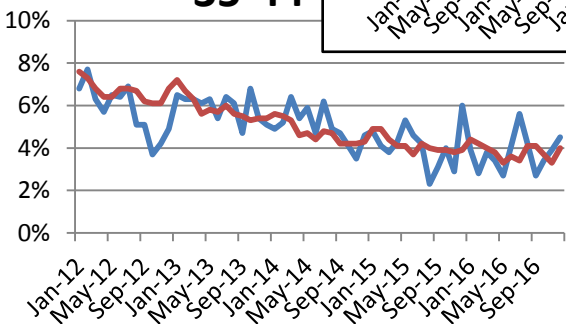
### 25-34



### 55+



### 35-44



### 45-54

