



## Employment Facts and Statistics

Office of Economic Opportunity  
Veterans Benefits Administration  
BLS Figures (non-seasonally adjusted)

### 2nd Quarter 2016

#### Unemployment

Cohort (% of total)	Rate	Change	Level	Change	Non-Vets
<b>All Veterans (100%)</b>	<b>3.9%</b>	<b>-0.5%</b>	<b>407,000</b>	<b>-64,000</b>	<b>4.6%</b>
Male	3.8%	-0.6%	356,000	-56,000	4.6%
Female	4.2%	-0.5%	51,000	-8,000	4.5%
<b>Post-9/11 Veterans (32%)</b>	<b>4.1%</b>	<b>-1.5%</b>	<b>130,000</b>	<b>-42,000</b>	-
Male	4.0%	-1.5%	105,000	-38,000	-
Female	4.9%	-0.8%	25,000	-3,000	-
<b>18-24 Veterans (4%)</b>	<b>6.1%</b>	<b>-4.5%</b>	<b>12,000</b>	<b>-10,000</b>	<b>9.9%</b>
Male	7.3%	-2.7%	12,000	-4,000	10.4%
Female*	-	-	-	-	9.3%
<b>25-34 Veterans (20%)</b>	<b>5.9%</b>	<b>-0.8%</b>	<b>83,000</b>	<b>-13,000</b>	<b>4.9%</b>
Male	6.1%	-1.4%	73,000	-17,000	4.9%
Female	4.7%	2.0%	10,000	4,000	4.9%
<b>35-44 Veterans (16%)</b>	<b>3.4%</b>	<b>-0.1%</b>	<b>66,000</b>	<b>-4,000</b>	<b>3.6%</b>
Male	3.0%	-0.3%	50,000	-5,000	3.3%
Female	5.2%	0.5%	17,000	2,000	3.9%
<b>45-54 Veterans (20%)</b>	<b>3.0%</b>	<b>-0.6%</b>	<b>83,000</b>	<b>-16,000</b>	<b>3.3%</b>
Male	2.9%	-0.6%	69,000	-16,000	3.2%
Female	4.0%	0.1%	14,000	1,000	3.5%
<b>55+ Veterans (40%)</b>	<b>3.8%</b>	<b>-0.5%</b>	<b>163,000</b>	<b>-21,000</b>	<b>3.3%</b>
Male	3.9%	-0.3%	153,000	-13,000	3.5%
Female	3.4%	-2.4%	10,000	-8,000	3.1%

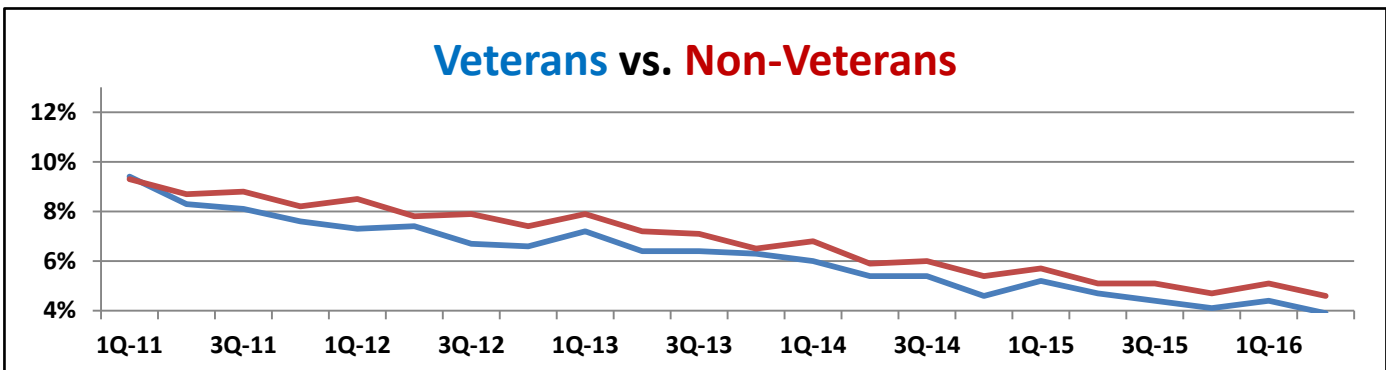
\* Does not meet BLS publication criteria

- 22,000 (9%) of all 18-54 Veterans (244,000) are enrolled in school either part time or full time

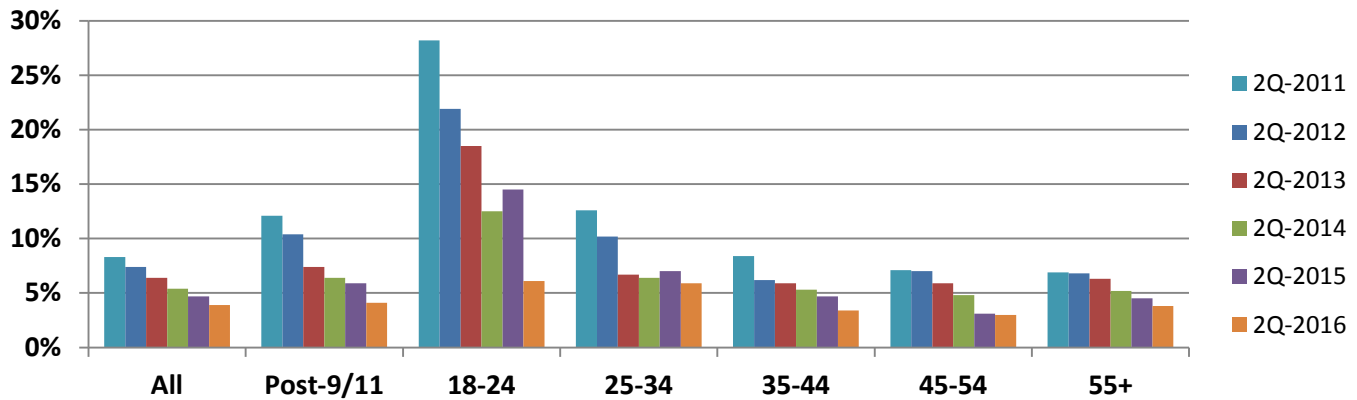
#### Unemployment by State

Highest Levels (37% of total)	Level	Highest Rates	Rate
California	52,000	Wisconsin	9.0%
Texas	34,000	Oregon	6.9%
Florida	27,000	Delaware	6.7%
North Carolina	19,000	Wyoming	6.6%
New York	18,000	Massachusetts	5.5%

\* Does not meet BLS publication criteria

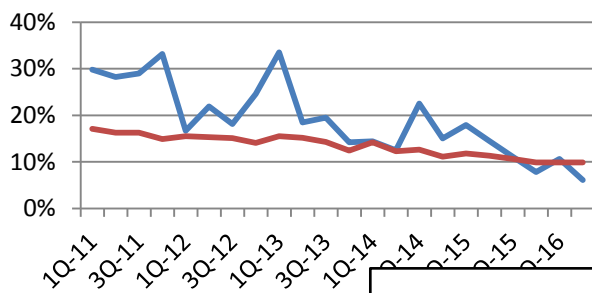


## Year-Over-Year Comparison Veteran Unemployment



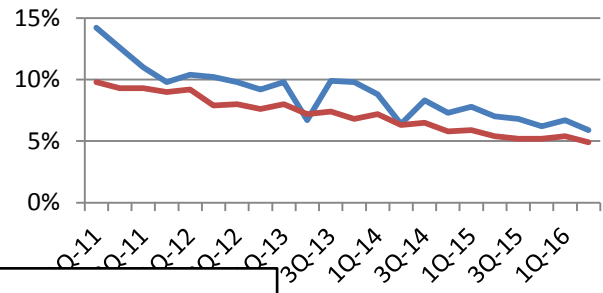
Vets/Non-Vets

### 18-24 yrs old

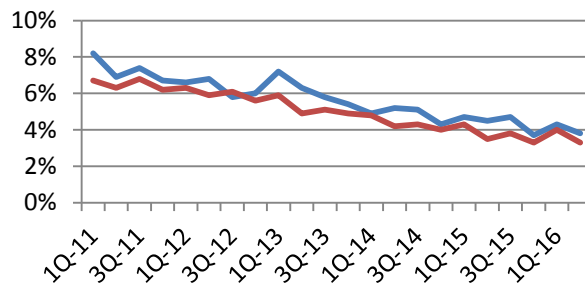


Vets/Non-Vets

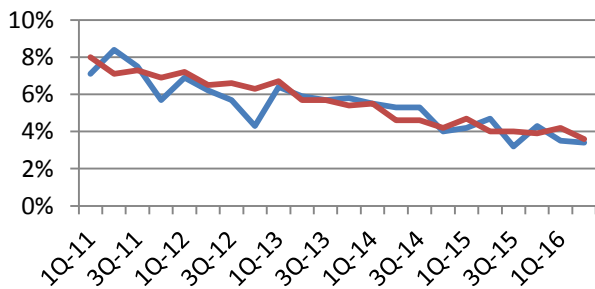
### 25-34



### 55+



### 35-44



### 45-54

