



## Employment Facts and Statistics

Office of Economic Opportunity  
 Veterans Benefits Administration  
 BLS Figures (non-seasonally adjusted)

### April-16

#### Unemployment

Cohort (% of total)	Rate	Change	Level	Change	Non-Vets
<b>National</b>	<b>5.0%</b>	-	<b>7.9M</b>	<b>100,000</b>	-
>27 Weeks			2.1M	100,000	-
<b>All Veterans (100%)</b>	<b>3.9%</b>	<b>-0.6%</b>	<b>416,000</b>	<b>-59,000</b>	<b>4.5%</b>
Male	4.0%	-0.5%	374,000	-45,000	4.7%
Female	3.4%	-1.1%	42,000	-15,000	4.4%
<b>Post-9/11 Veterans (31%)</b>	<b>4.1%</b>	<b>-2.2%</b>	<b>127,000</b>	<b>-64,000</b>	-
Male	3.8%	-2.6%	100,000	-65,000	-
Female	5.1%	-0.3%	27,000	1,000	-
<b>18-24 Veterans (3%)</b>	<b>6.3%</b>	<b>-6.0%</b>	<b>12,000</b>	<b>-12,000</b>	<b>9.0%</b>
Male	7.5%	-4.9%	12,000	-7,000	9.4%
Female*	-	-	-	-	8.5%
<b>25-34 Veterans (20%)</b>	<b>5.9%</b>	<b>-1.4%</b>	<b>83,000</b>	<b>-20,000</b>	<b>4.8%</b>
Male	6.3%	-2.0%	74,000	-25,000	5.1%
Female	4.0%	1.9%	9,000	5,000	4.5%
<b>35-44 Veterans (16%)</b>	<b>3.4%</b>	<b>-0.4%</b>	<b>66,000</b>	<b>-9,000</b>	<b>3.8%</b>
Male	3.0%	-0.4%	49,000	-7,000	3.6%
Female	5.2%	-0.3%	17,000	-1,000	4.1%
<b>45-54 Veterans (22%)</b>	<b>3.4%</b>	<b>-0.2%</b>	<b>94,000</b>	<b>-5,000</b>	<b>3.4%</b>
Male	3.4%	-0.3%	82,000	-8,000	3.5%
Female	3.5%	0.8%	12,000	3,000	3.4%
<b>55+ Veterans (39%)</b>	<b>3.7%</b>	<b>-0.4%</b>	<b>161,000</b>	<b>-13,000</b>	<b>3.4%</b>
Male	3.9%	-0.1%	157,000	3,000	3.6%
Female	1.3%	-4.7%	4,000	-16,000	3.3%

\* Does not meet BLS publication criteria

- 23,000 (9%) of all 18-54 Veterans (255,000) are enrolled in school either part time or full time

#### Unemployed by State Data

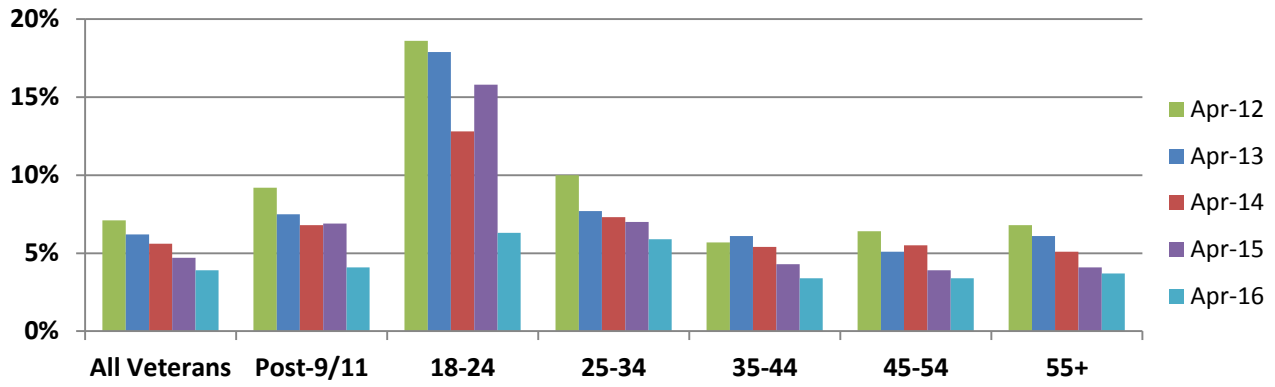
Highest Levels (41% of total)	Level	Highest Rates	Rate
California	42,000	Wisconsin	14.6%
Texas	39,000	South Dakota	7.1%
Wisconsin	25,000	Colorado	7.0%
North Carolina / Florida	23,000	Montana	6.9%
Ohio	20,000	Massachusetts	6.1%

\* Does not meet BLS publication criteria

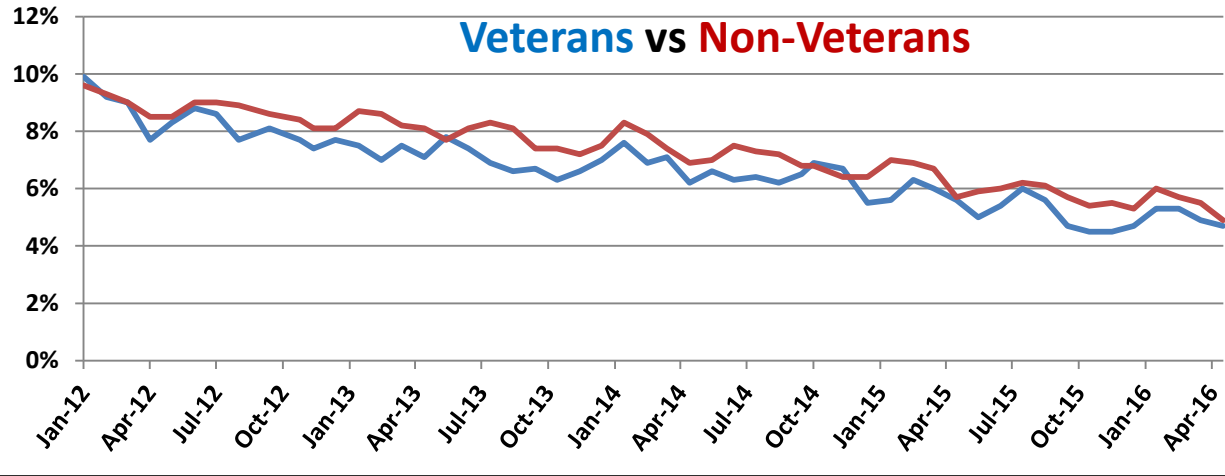
#### Employment Sectors

Sector	+/-	Sector	+/-
Professional/Business	65,000	Retail	Even
Healthcare	44,000	Transportation/Warehousing	Even
Financial	20,000	Wholesale Trade	Even
Construction	Even	Government	Even
Leisure & Hospitality	Even	Manufacturing	Even

## Year-Over-Year Comparison



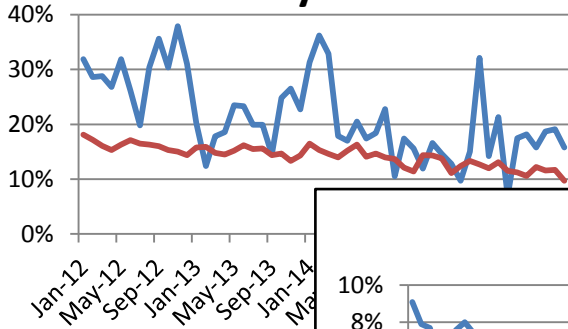
## Veterans vs Non-Veterans



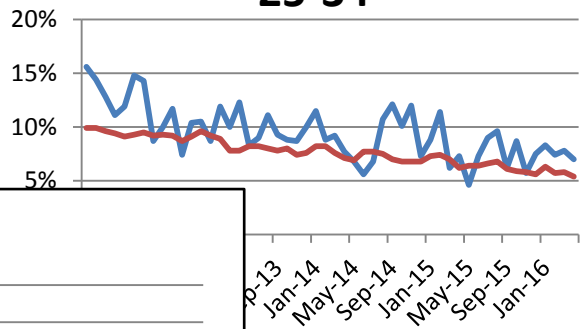
Vets / Non-Vets

Vets / Non-Vets

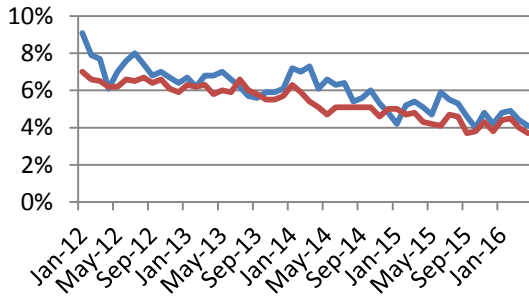
### 18-24 yrs old



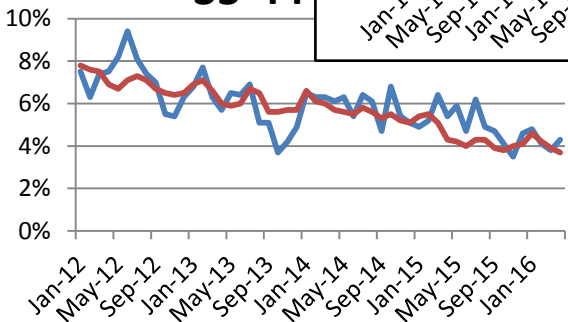
### 25-34



### 55+



### 35-44



### 45-54

