

Scrap Materials for South Korean Metal Importer

A scrap materials importer in Seoul, South Korea would like to serve as a distributor/ wholesaler or agent/sales representative for US exporters of non-plastic scrap. The company is mostly interested in a supply of scrap metals of multiple varieties, but it is also seeking petrochemical and electronic scrap.

The company does not maintain its own warehouses. It will resell scrap materials imported from the US. It is seeking minimum quantities of 20 tons per product. Please contact the trade lead Point of Contact if you would like an introduction to the buyer. A deadline has not been specified for this trade lead.

E-Waste		Petrochemical Byproducts	Metal Scrap
• Defected Diodes	• Mobile phone parts	• Petrochemical Catalysts	• Tuning Mill Scrap (Ferro Non Ferro)
• CPUs	• Defected Printed Circuit Boards (PCBs)	• Oil catalysts (Palm, Cooking)	• Copper
• Integrated Circuits (ICs)	• Mother Boards	• Metal-Containing Sludge	• Tungsten Carbide
• Lead Frames (Ni, Cu)	• Communication Boards		• Alloy wheels (1000 & 6000 series)

Trade Lead Point of Contact:

Jessica Son, Senior Commercial Specialist, U.S. Embassy - Commercial Service Korea, 188, Sejongro, Sejong-daero, Chongno-gu, Seoul 03141, Korea,

Tel: +82-2-397-4587, Fax: +82-2-739-1628,

jessica.son@trade.gov

If you are interested in this lead, please reach out to the trade lead POC and copy your local [US Commercial Service office specialist](#), who is also available to answer any of your export questions.

Product introduce (Electronics Industry)



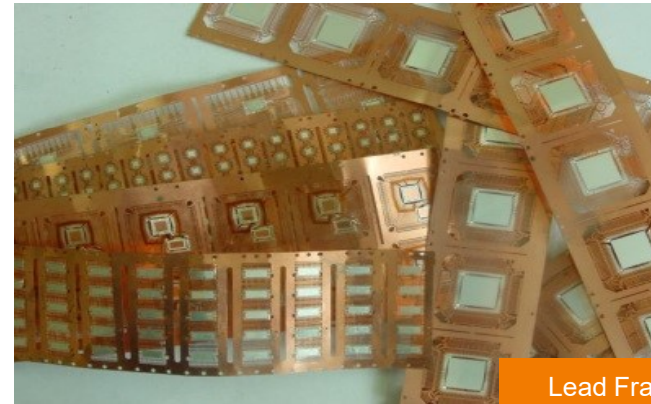
Defected Diode



CPU



IC

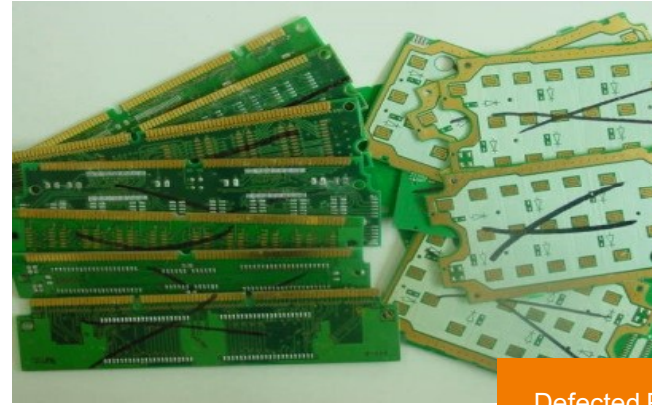


Lead Frame
(Ni, Cu)

Product introduce (Electronics Industry)



Mobile Scrap



Defected PCB



Mother Board



Communication Board

Product introduce (Petrochemical & Food oil Industry)



Petrochemical
catalysts



Oil catalysts
(Palm, Cooking)



Petrochemical
catalysts



Sludge
(Metal Containing)

Product introduce (Ferrous, Non-Ferrous Metals)



Tuning Mill Scrap
(Ferro Non Ferro)



Copper Scrap



Tungsten Carbide
Tipped



Alloy wheel
(1000, 6000)