

WELCOME!

- We'll get started momentarily.
- Please join us through Adobe Connect AND the call-in number.
- If Adobe Connect freezes on your computer, refresh your browser.
- We will not take questions on the phone line.
- Please submit questions at any time in the Q&A pod.
- If you still have questions at the end of this session, please contact your Project Officer or Health Center Program Support.



Today With Macrae: Health Center Program Updates

Thursday, August 20, 2020

Jim Macrae
Associate Administrator
Bureau of Primary Health Care (BPHC)

Vision: Healthy Communities, Healthy People



Today with Macrae: Heath Center Program Updates

AGENDA

- ☐ Funding and Program Updates
- ☐ COVID-19
 - ☐ CRAFT
- ☐ BPHC REACH
- ☐ Mark Your Calendar
- ☐ Q&A

Funding Updates

August

- Integrated Behavioral Health Services (IBHS), Year 2
- Quality Improvement Awards

September

- Capital Assistance for Disaster Response and Recovery Efforts (CADRE)

Upcoming COVID-19 Funding

- HEROES/HEALS



Executive Summary: 2019 UDS Data

Increased Access to Care



- + **23 health centers** for a total of 1,385
- + **1.46 million patients** for a total of 29.8 million
- + **6.49 million visits** for a total of 122.3 million
- + **16,717 full-time equivalents** for a total of 252,868

Improved Delivery of Comprehensive Services



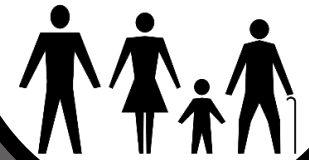
- + **23 health centers** providing care across **3** or more comprehensive services
- + **35 health centers** providing care across **4** or more comprehensive services
- + **7 health centers** providing care across **5** comprehensive services

Advanced Quality of Care



- **96% of health centers** met or exceeded one or more national benchmarks*
- **89% of HCs** improved in **5** or more Clinical Quality Measures
- **53% of HCs** improved in **8** or more Clinical Quality Measures

Addressed Key Public Health Issues



- **58% of health centers** provided Medication-Assisted Treatment
- + **2,196 MAT eligible providers** for a total of 7,095
- + **48,379 MAT patients** for a total of 142,919
- + **126,430 patients with diabetes** for a total of 2,521,656



Source: Uniform Data System, 2017-2019. * Healthy People (HP) 2020 available at <https://www.healthypeople.gov/>.

2019 Uniform Data System (UDS) Now Available

data.HRSA.gov

Search A-Z Index

Find Health Care Data Maps Tools Topics Help

Home > Topics > Health Centers > Health Center Data & Reporting > Health Center Program Data

Health Center Program Data

Each year HRSA Health Center Program Awardees and Look-Alikes are required to report core set of information, including data on patient demographics, services provided, clinical indicators, utilization rates, costs, and revenues. [View the most recent national program awardee data and national program look-alike data.](#)



Select Health Center Program Type

Select

Select State/Territory

Select

Print Email Facebook Twitter

National Health Center Data

Total Number of Reporting Programs/Awardees: 4,880 Total Patients Served: 28,888,812

National Aggregated Health Center Data

Expanded Summary for 2019 UDS Tables 3A – 9E and EHR Information

- View Full 2019 National Report
- Table 3A: Patients by Age and by Sex Assigned at Birth
- Table 3B: Demographic Characteristics
- Table 4: Selected Patient Characteristics
- Table 5: Staffing and Utilization
- Table 6A: Turnover for Health Center Staff
- Table 6B: Selected Diagnoses and Services Rendered
- Table 8E: Quality of Care Measures
- Table 7: Health Outcomes and Disparities
- Table 8A: Financial Goals
- Table 8D: Patient Related Revenue
- Table 8E: Other Revenues
- Table 9A: Health Center Health Information Technology (HIT) Capabilities
- Table 9B: Other Data Elements

UDS Data Comparisons

Aggregated Health Center Data	2017	2018	2019
Total Patients	27,674,872	28,879,882	28,888,812
Age (All of total patients)			
0-17 years (all ages)	12.89%	12.78%	12.82%
Children (all ages)	8,882,684	8,718,208	8,628,812
18-64 years (all ages)	67.44%	67.32%	67.33%
Adults (all ages)	18,000,870	17,000,000	17,000,000
65+ years (all ages)	19.67%	19.90%	19.85%
Elderly (all ages)	5,500,000	5,500,000	5,500,000



August Is National Immunization Awareness Month



Recommendations to Promote Vaccinations

- What actions can health centers take to encourage parents to bring their children in for vaccines?
 - Extend hours (e.g., on nights and weekends) for the administration of catch-up vaccines
 - Inform parents about COVID-19 safety precautions and practices your health center has in place
 - Communicate the importance of childhood immunizations
 - ✓ Share [this video](#) with U.S. Surgeon General Jerome Adams
 - Use social media messages and graphics from the [HHS Catch-Up to Get Ahead Toolkit](#) in digital communications efforts
 - ✓ Be sure to use the hashtag #CatchUpGetAhead!



Many kids fell behind on their routine vaccines during COVID-19.

➤ **Let parents know it's time to catch-up on recommended vaccines.**

#CatchUpGetAhead Learn more at [Vaccines.gov/catch-up](https://www.vaccines.gov/catch-up)



Tell Us about Your “Catch-Up To Get Ahead” Efforts

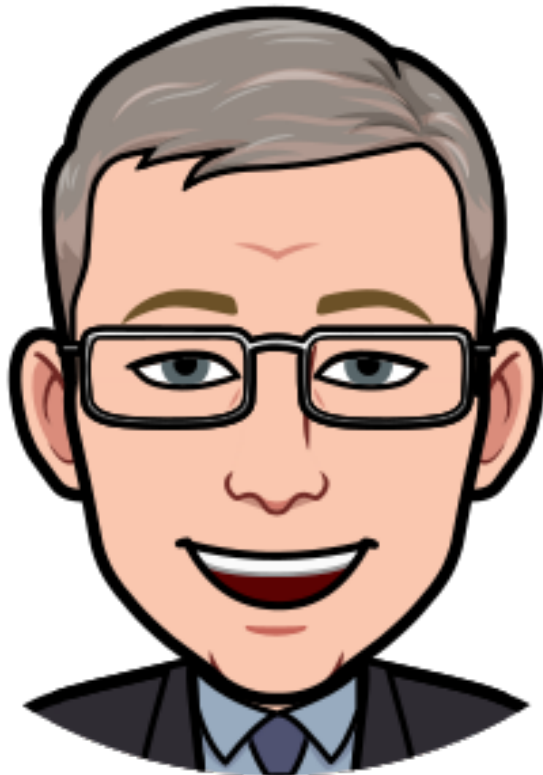
- Share a brief description and/or photo to showcase your health center’s efforts to promote vaccinations
- If sending a photo, be sure to include [a signed photo release](#)
- Send materials to the Digest mailbox at phcdigest@hrsa.gov
- Respond by Friday, September 4
 - Further details in the Health Center Program Bulletin sent on August 17



Flu Season is Coming



On My Mind



Health Center COVID-19 Survey*- Patient Testing

- **Number of Health Center Respondents:** 979 (71% of all health centers)
- **Health centers with COVID-19 testing capacity:** 96.22%
- **Health centers with COVID-19 drive-up/walk-up testing capacity:** 79.09%
- **Average turnaround time for COVID-19 test results:** 60.51% in 3 days or less

Number of patients tested:

Metrics	Any Test Type	Virus Detection	Antibody Detection
Patients tested for COVID-19	267,266	251,246	16,020
Racial and/or ethnic minority patients tested for COVID-19	39.69%	40.01%	34.52%
Patients tested positive for COVID-19	23,437	21,389	2,048
Racial and/or ethnic minority patients tested positive for COVID-19	51.92%	52.96%	41.02%



*Data from the past week as of August 14, 2020

Health Center COVID-19 Survey - Operations & Staff

Metrics	Value
Health center weekly visits compared to pre-COVID-19 weekly visits	79.62%
Health center sites temporarily closed	1,045
Staff tested positive for COVID-19	475
Health center staff unable to work*	4.97%
Average percent of health center visits conducted virtually	31.27%

- **Health centers with an adequate supply of Personally Protective Equipment (PPE) for the next week:**
 - Surgical masks: 96.02%
 - N95/PPR masks: 93.36%
 - Gowns: 94.28%
 - Gloves: 96.32%
 - Face masks/goggles: 96.94%



*Due to site/service closure, exposure, family/home obligations, lack of PPE, etc.

Health Center COVID-19 Testing Dashboard

A high-level view of total COVID-19 tests conducted
and the distribution of positive COVID-19 tests by race and ethnicity



Health Center COVID-19 Supplemental Funding

July 2020 COVID-19 Quarterly Progress Report Summary

	H8C	H8D	H8E
Total Awards	1,381	1,387	1,385
Award Amount	\$100,000,000	\$1,316,374,135	\$582,378,306
Total Drawn (as of 8/10/20)	\$69,388,519	\$390,480,535	\$60,039,270
Draw Down Percent	69.4%	29.7%	10.3%

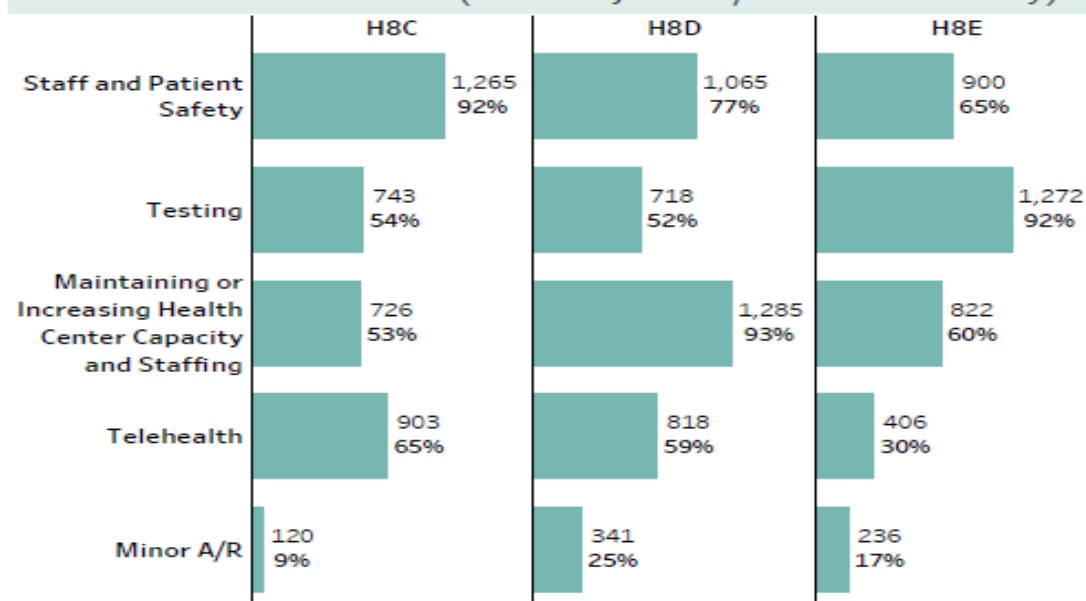
Summary:

- Over 99% of 4,153 COVID Progress Reports were submitted to HRSA on time.
- Within the first quarter of award release, over 30% of grant organizations made at least 50% progress on their projects and 14% reported project completion.
- H8E award recipients (13%) report the highest percentage of issues or barriers to project implementation.

#1. Project Status

	H8C	H8D	H8E	Grand Total
Completed	501 36.3%	78 5.6%	7 0.5%	586 14.1%
Greater than 50% and Less than 100% Complete	470 34.0%	126 9.1%	66 4.8%	662 15.9%
Less than or equal to 50% Complete	384 27.8%	1,056 76.1%	954 68.9%	2,394 57.6%
Not Started	26 1.9%	124 8.9%	349 25.2%	499 12.0%
Not Reported		3 0.2%	9 0.6%	12 0.3%

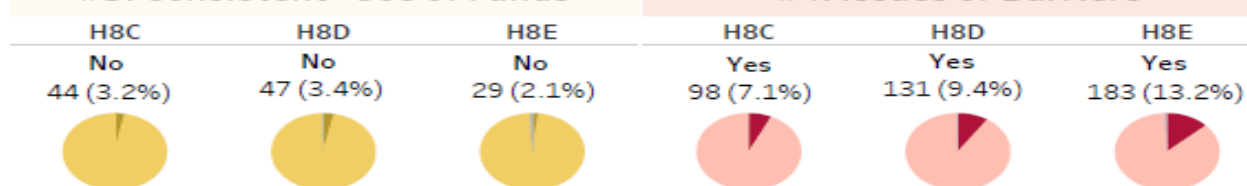
#2. COVID-19 Activities (% of Projects w/ Selected Activity)



Note: Activities chart based on yes or no checkbox for the activity. Improved accuracy requires qualitative analysis of the written narrative of described activities. Report is accurate as of 08/10/20 data export.

#3. Consistent* Use of Funds

#4. Issues or Barriers



*Activities and use of funds consistent with initial post-award reporting requirement response. "No" indicates project change.



COVID-19 Response Assistance Field Team (CRAFT) (1/3)

CAPT Tiffany Danko

U.S. Coast Guard

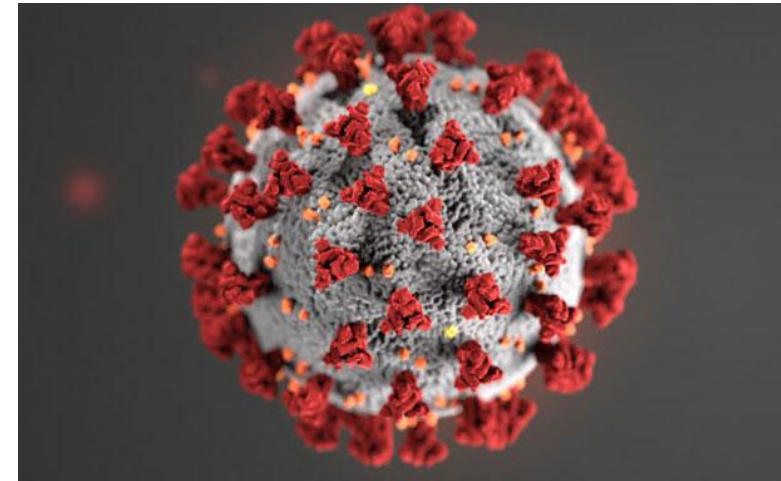
Deputy Chief of Staff for Operations

HHS/FEMA COVID-19 Joint Coordination
Cell



COVID-19 Response Assistance Field Team (CRAFT) (2/3)

- Cross functional team of HHS and FEMA experts
- Engage with local jurisdictions, public health leadership, community partners to help mitigate the spread of COVID-19
- Collaborates at local level to address unique jurisdictional challenges with mitigation, provides access to public health experts at HHS and FEMA to address specific concerns
- HRSA provides data in real time to aid situational awareness for *boots on the ground* efforts



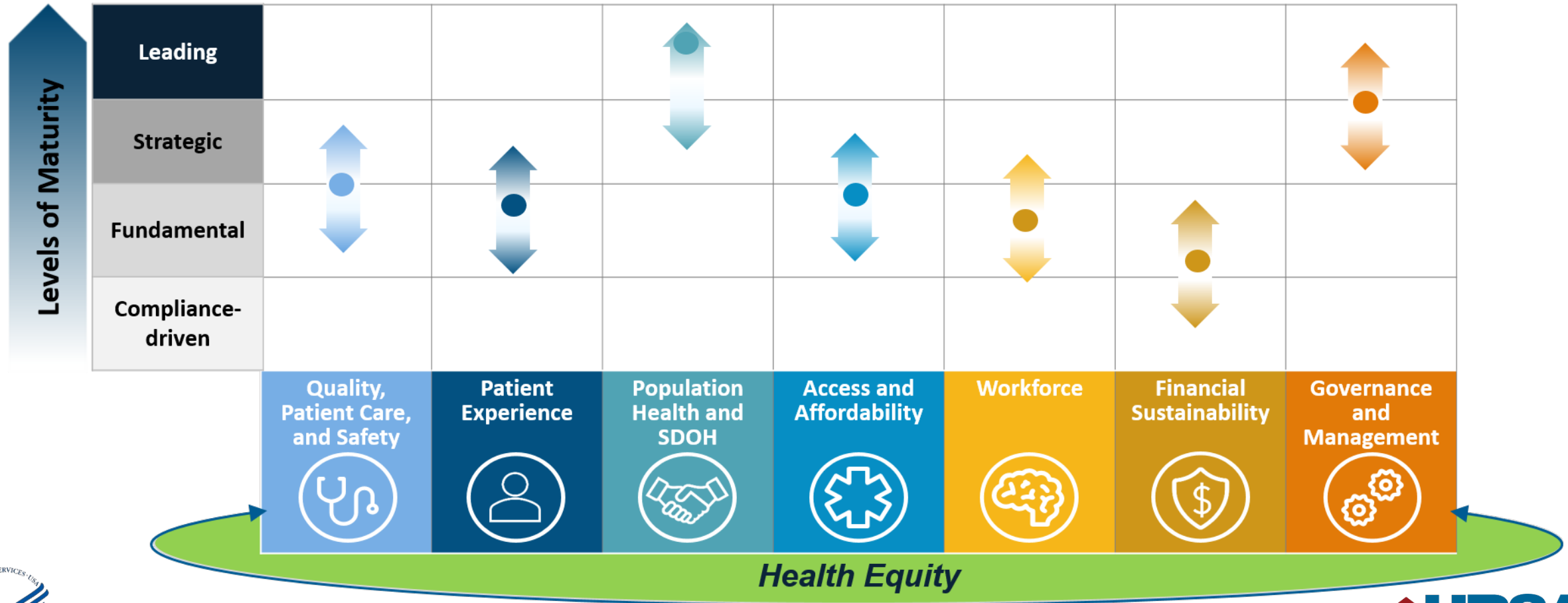
COVID-19 Response Assistance Field Team (CRAFT) (3/3)

- Visits look to engage on four key areas:
 - How local jurisdictions are collaborating and coordinating with community based organizations for mitigation, along with challenges and potential barriers
 - Local mitigation strategies and concerns for congregate facilities such as LTCF, schools, etc.
 - Data-based information and discussion on testing strategies and contact tracing
 - Engagement on schools and higher education mitigation strategies and approaches with support for data-based strategies and mitigation measures
- Our teams have visited 54 cities, counties, and regions within the United States since the beginning of July



Advancing Health Center Excellence Webinar

Wednesday, August 26, 2:00-3:30 p.m. ET



BPHC REACH and Health Equity



Today with Macrae
Thursday, September 17
2:00-3:00 p.m. ET

Stay tuned for details in
the Primary Health Care
Digest!

Mark Your Calendar

- Today with Macrae: Health Center Program Updates
 - Thursday, September 17, 2-3 p.m. ET
 - Thursday, October 1, 2-3 p.m. ET
 - Thursday, October 29, 2-3 p.m. ET
 - Tuesday, December 1, 2-3 p.m. ET

Join Us!

Questions?



Thank You!

Bureau of Primary Health Care (BPHC)

Health Resources and Services Administration (HRSA)



[Health Center Program Support](#)



877-464-4772. 7 a.m. to 8 p.m. ET, Monday - Friday (except federal holidays)

bphc.hrsa.gov



[Sign up for the *Primary Health Care Digest*](#)



Connect with HRSA

Learn more about our agency at:

www.HRSA.gov



[Sign up for the HRSA eNews](#)

FOLLOW US:

