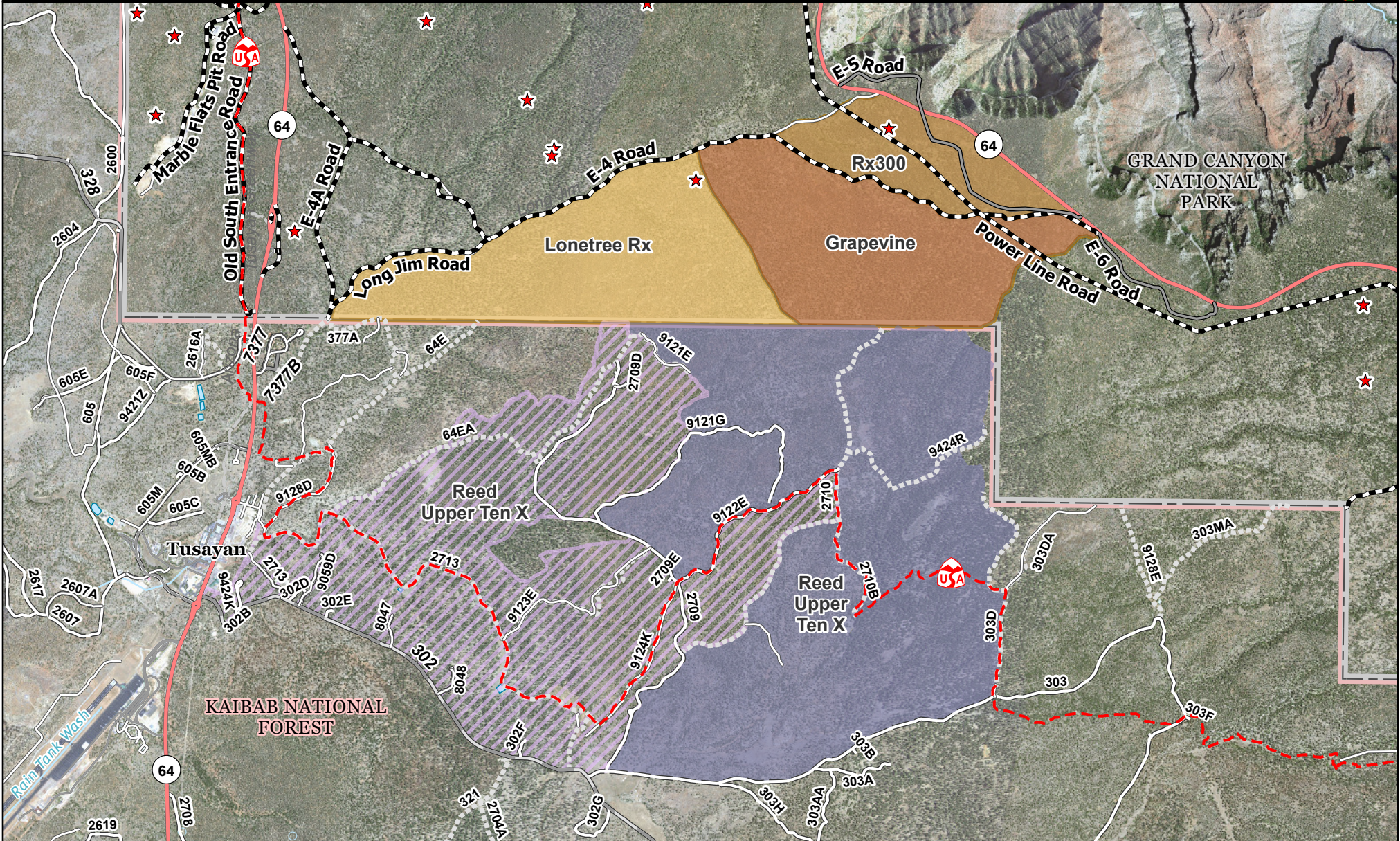


# Grapevine, Lonetree, RX300 and Reed Units

## Grand Canyon National Park

National Park Service  
U.S. Department of the Interior



- ★ FMH Plots
- Closed
- Trails
- - - National Designated Trail
- NPS Roads**
- Administrative
- Paved Road
- Gravel Road
- Unimproved Roads
- Closed Roads
- Roads**
- Secondary Highway
- Paved Roads
- Dirt (Not Paved)
- RX Units**
- Lonetree Rx - 926 acres
- Grapevine - 865 acres
- Rx300 - 391 acres
- Reed (treated) - 2744 acres
- Reed (untreated) - 2373 acres
- NPS
- Forest Service

0 0.25 0.5 1 Miles

NPS Fire GIS  
10/8/2021 11:37 AM