

FEMA National Watch Center

# Daily Operations Briefing

Wednesday, October 9, 2024

8:30 a.m. ET



**FEMA**

# National Current Ops / Monitoring

---

## New Significant Incidents / Ongoing Ops

- Hurricane Milton (CAT-4) – Florida
- Helene – Southeast and Mid-Atlantic

## Hazard Monitoring

- Severe Weather/Excessive Rainfall/Flash Flooding – Florida
- Tropical Activity:
  - Atlantic:
    - Hurricane Milton (CAT-4)
    - Hurricane Leslie (CAT-1)
    - Disturbance 1: Medium (40%)
    - Disturbance 2: Low (10%)
  - Eastern Pacific:
    - Disturbance 1: Low (20%)

## Disaster Declaration Activity

- Approval: Emergency Declaration – Seminole Tribe of Florida
- Amendment No. 2 to FEMA-4831-DR-VA

## Event Monitoring

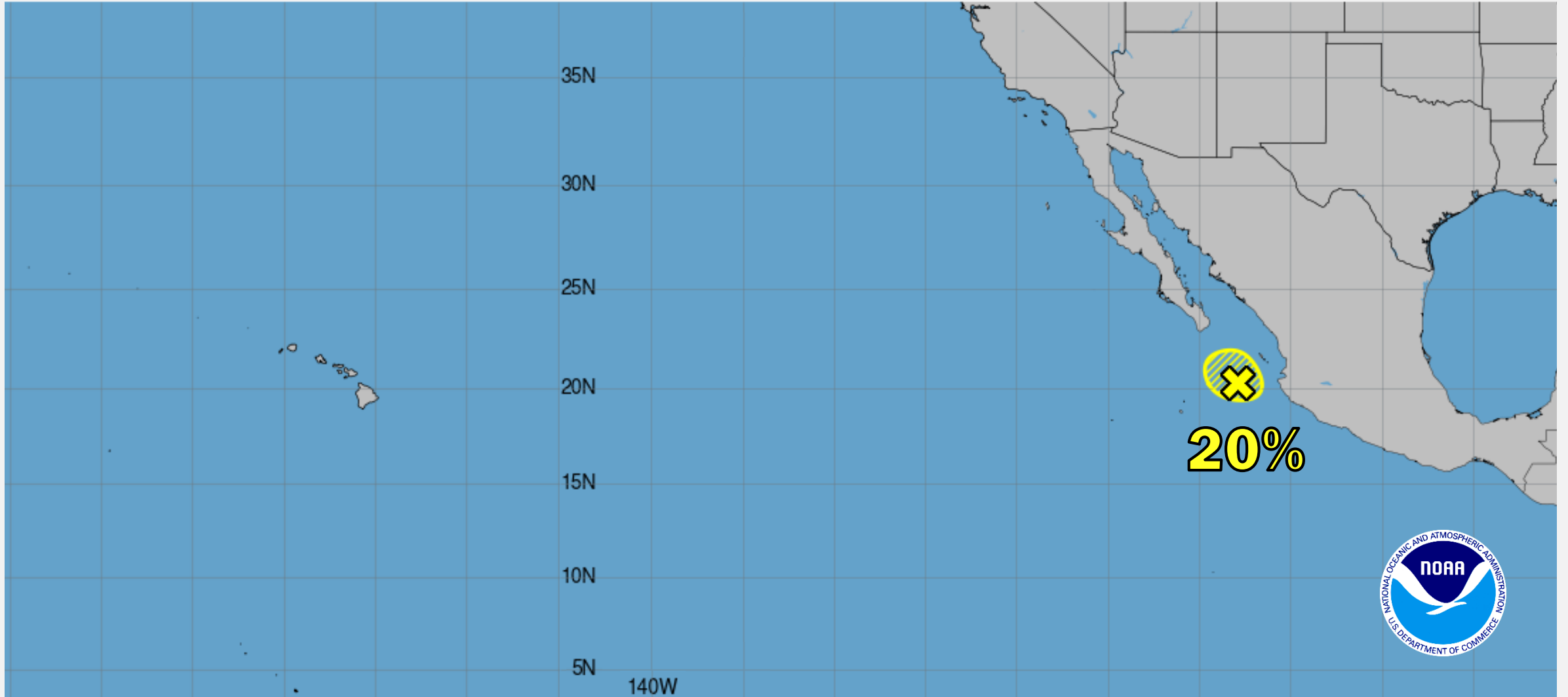
- No new significant events



**FEMA**

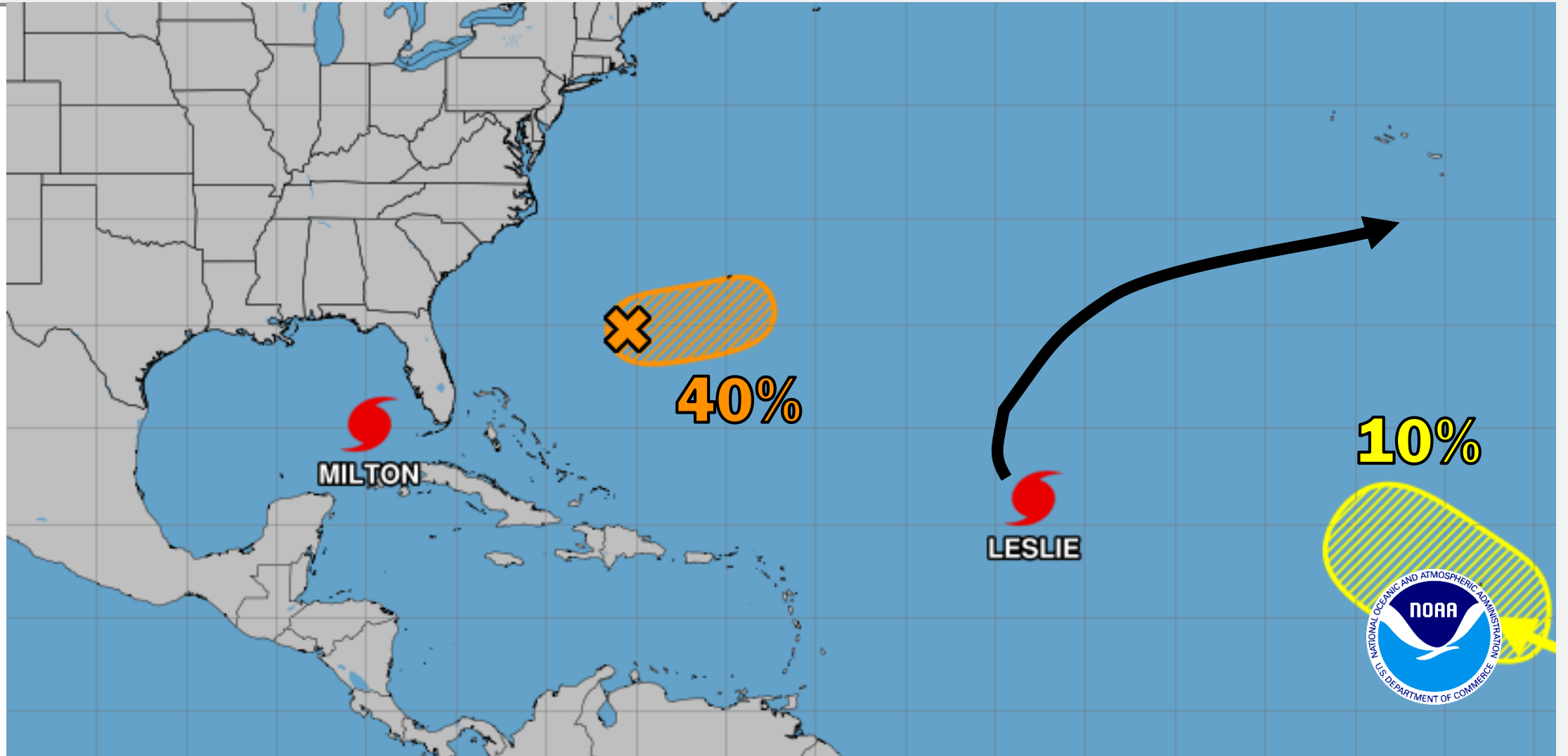
# Pacific Overview

## TROPICAL OUTLOOK



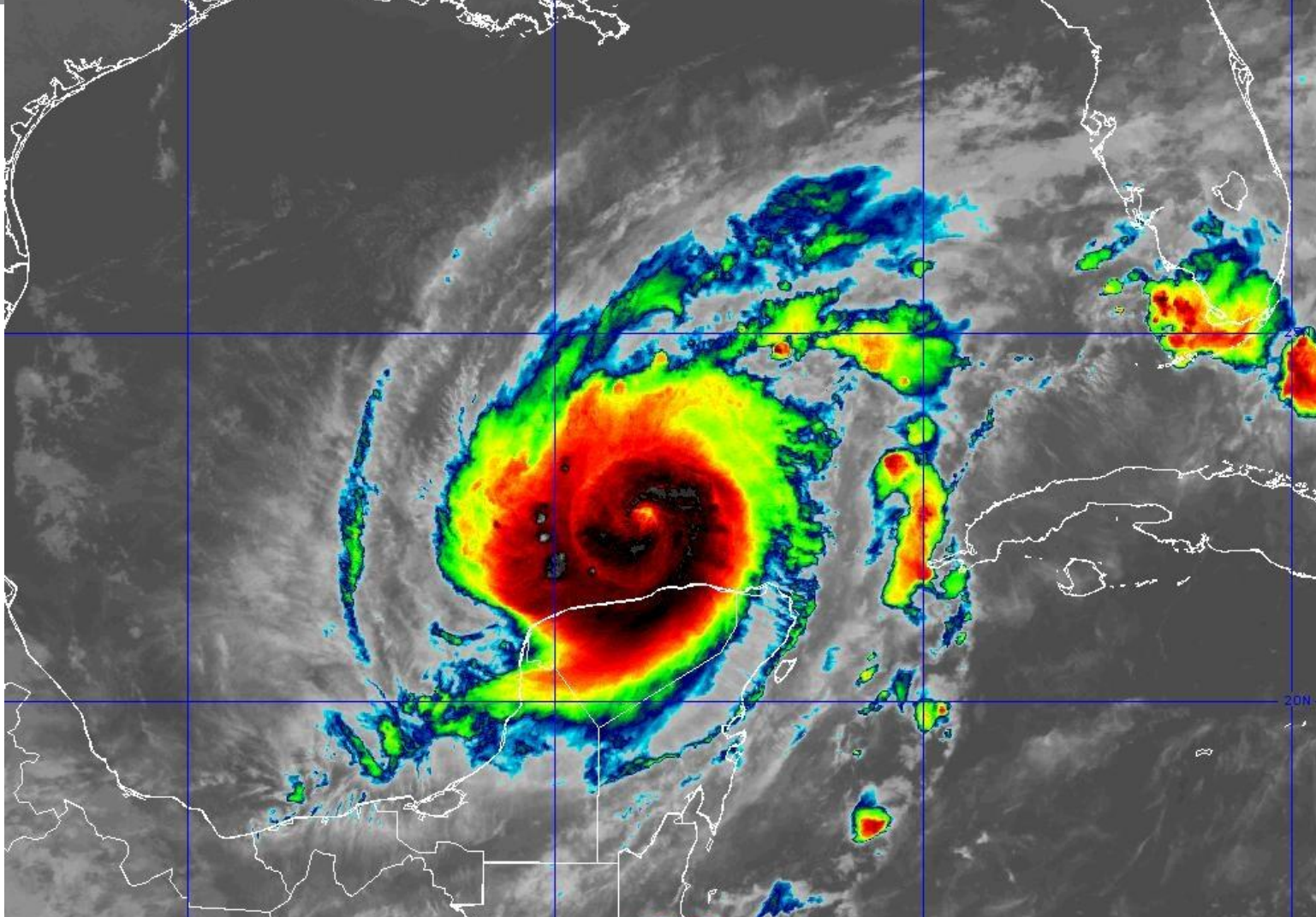
# Atlantic Overview

## TROPICAL OUTLOOK



# Major Hurricane Milton

## SATELLITE IMAGE



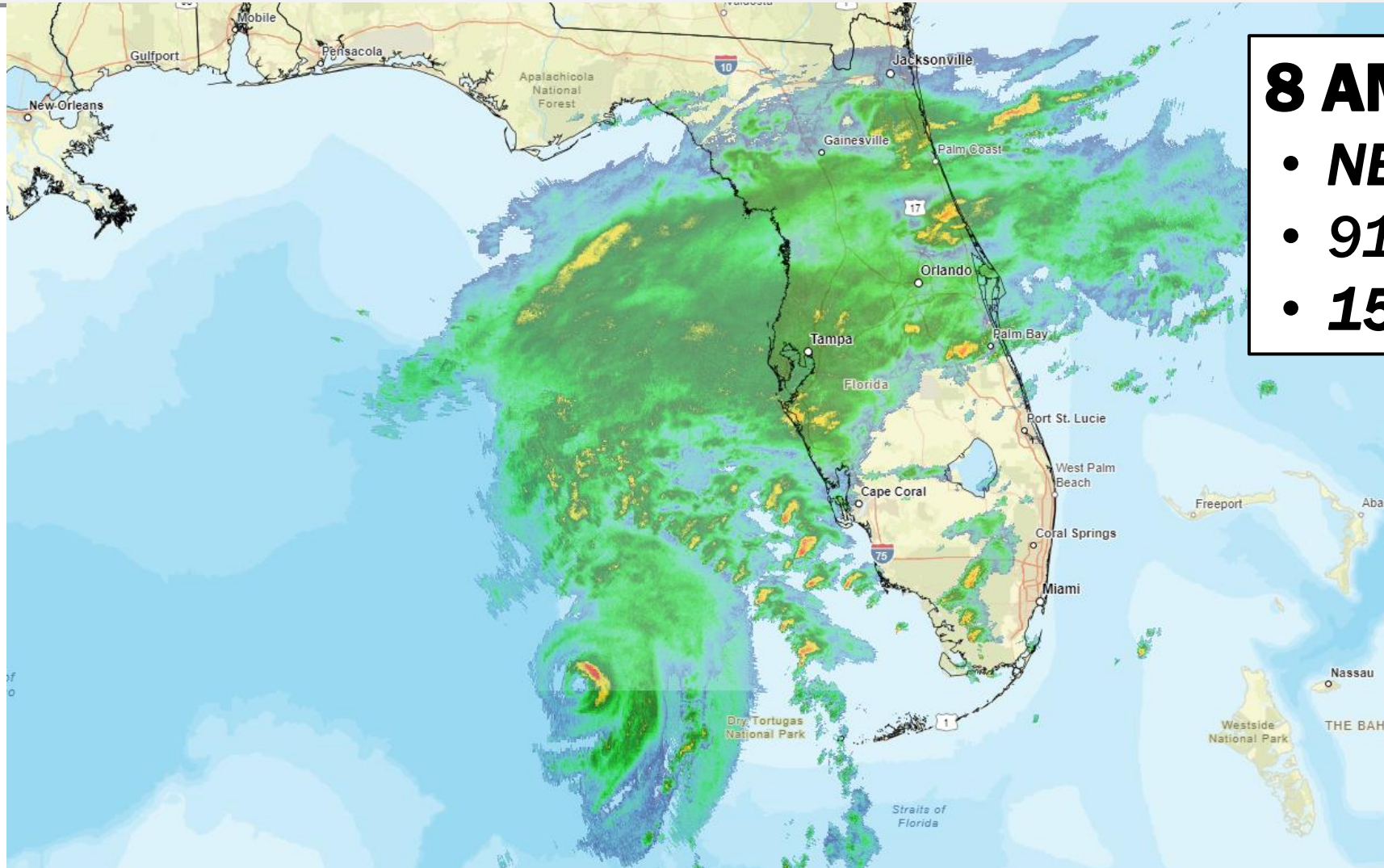
**8 AM EDT**

- ***NE at 16 mph***
- ***915 mb***
- ***155 mph***



# Major Hurricane Milton

## RADAR IMAGE



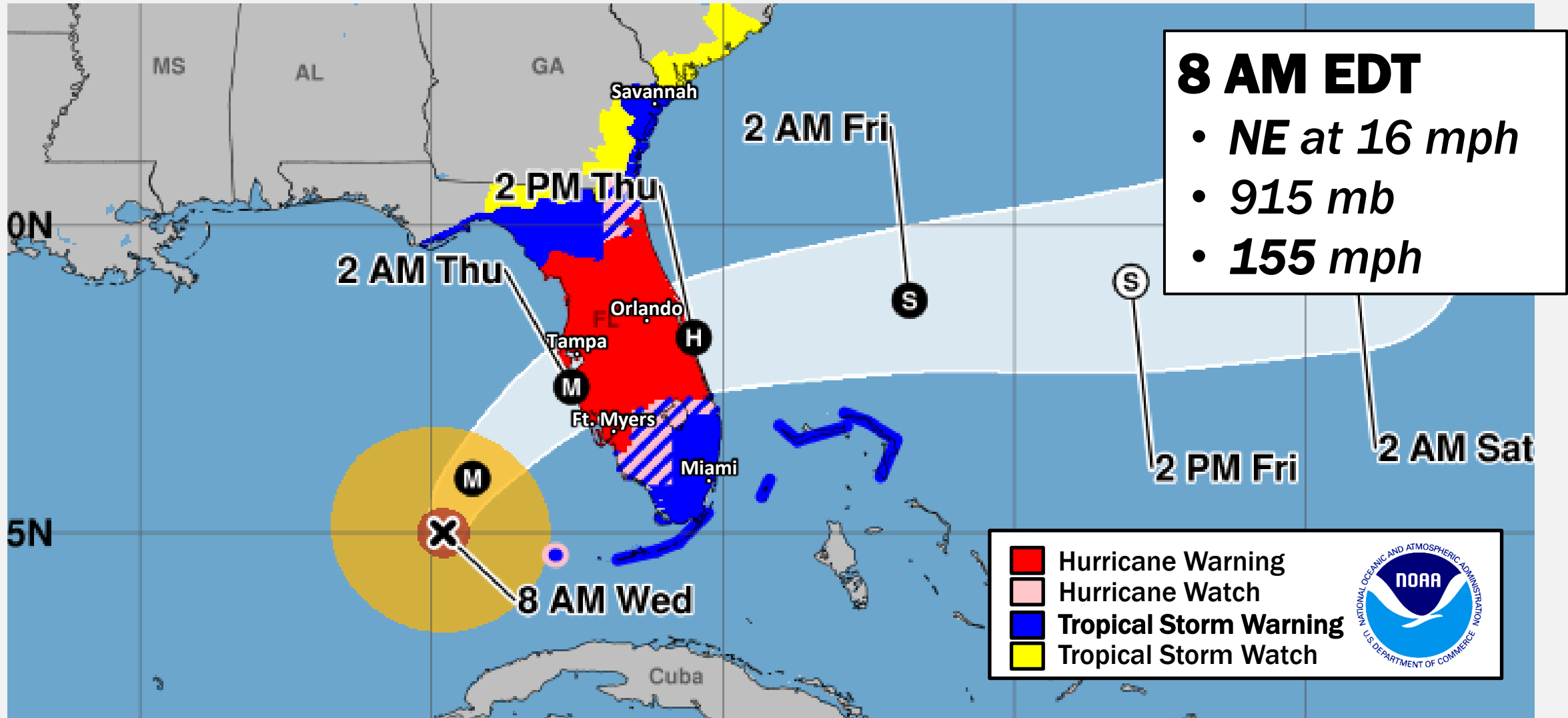
**8 AM EDT**

- ***NE at 16 mph***
- ***915 mb***
- ***155 mph***



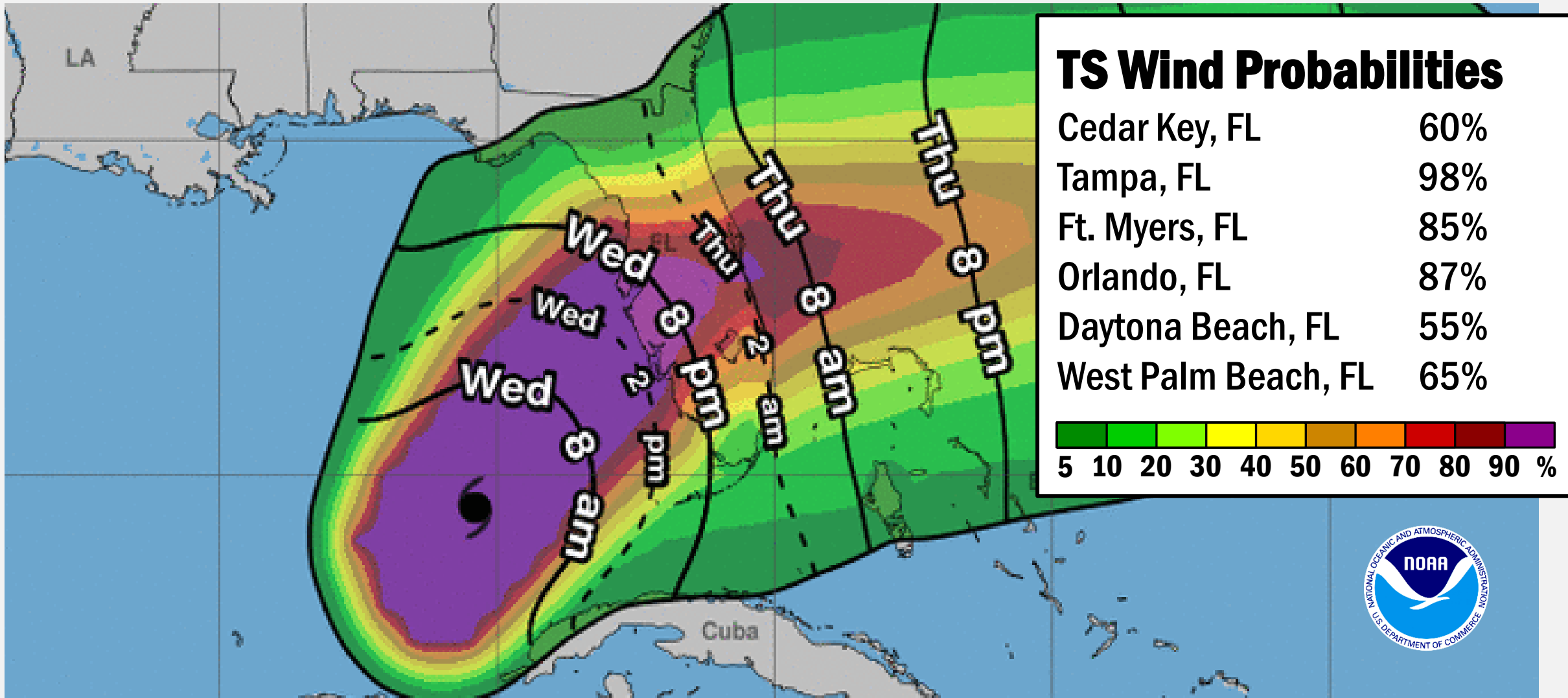
# Major Hurricane Milton

## FORECAST TRACK



# Major Hurricane Milton

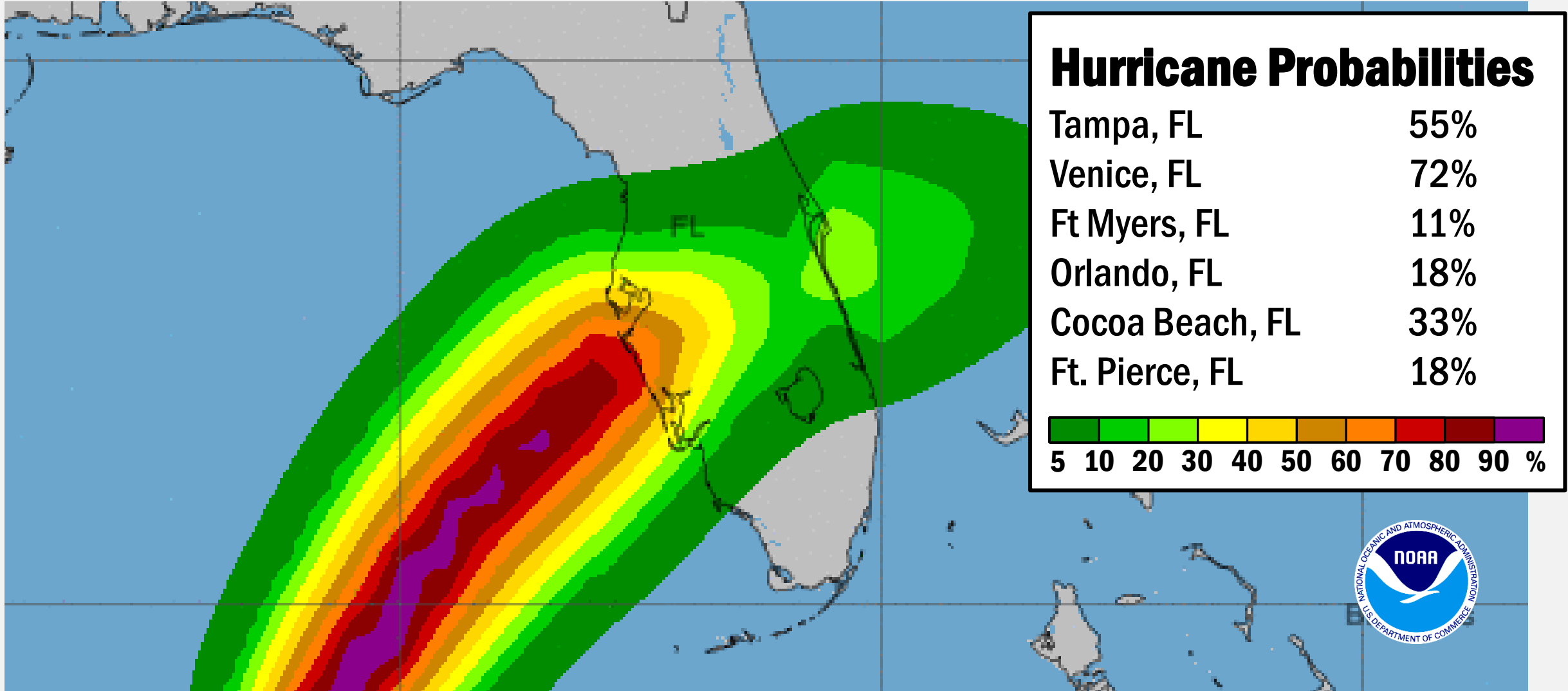
## MOST LIKELY ARRIVAL OF TS WINDS





# Major Hurricane Milton

## HURRICANE WIND SPEED PROBABILITIES



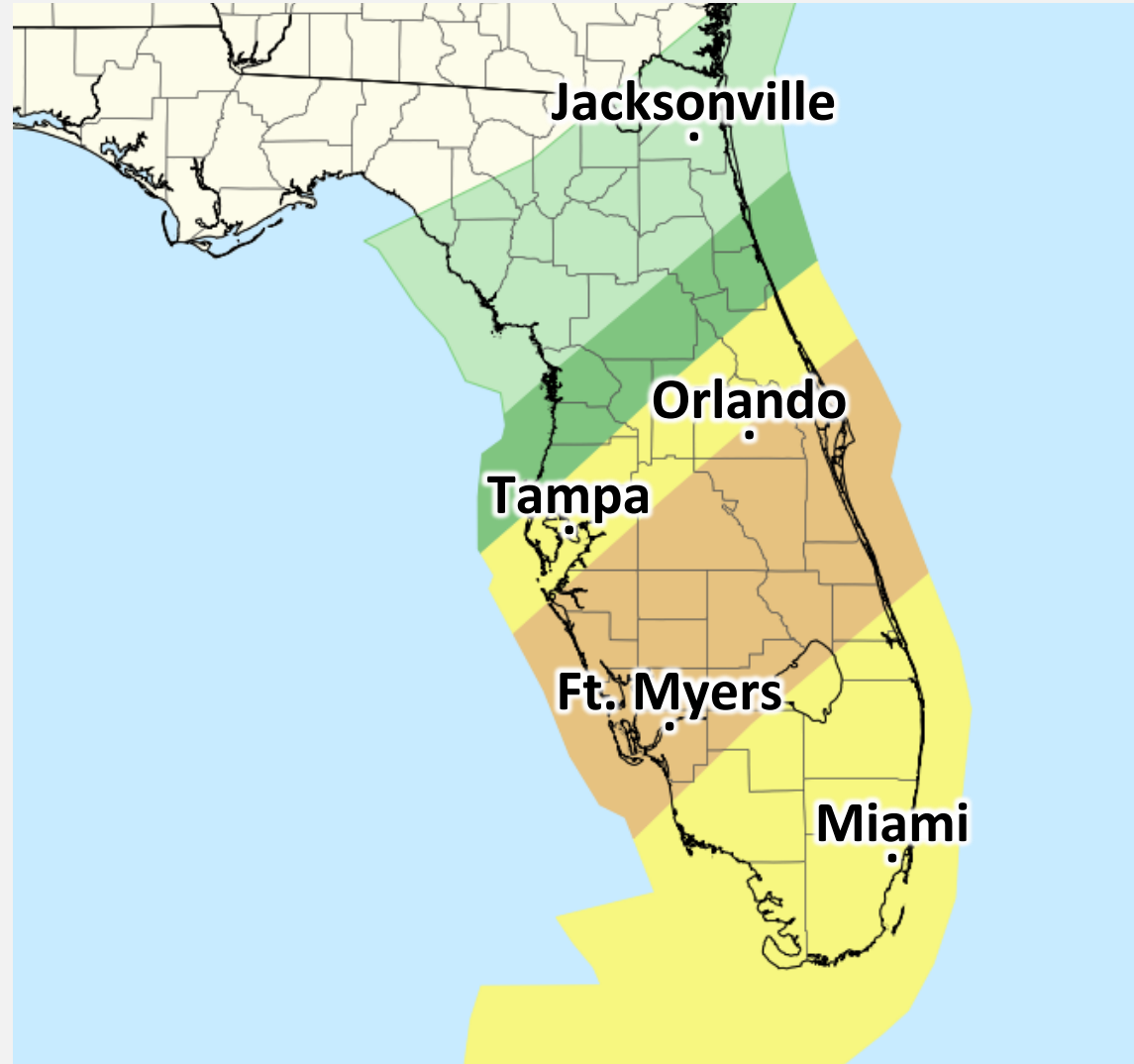
# Major Hurricane Milton

## PEAK STORM SURGE FORECAST

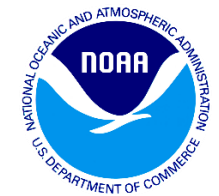


# Major Hurricane Milton

## SEVERE WEATHER OUTLOOK TODAY



-  Marginal Risk
-  Slight Risk
-  Enhanced Risk

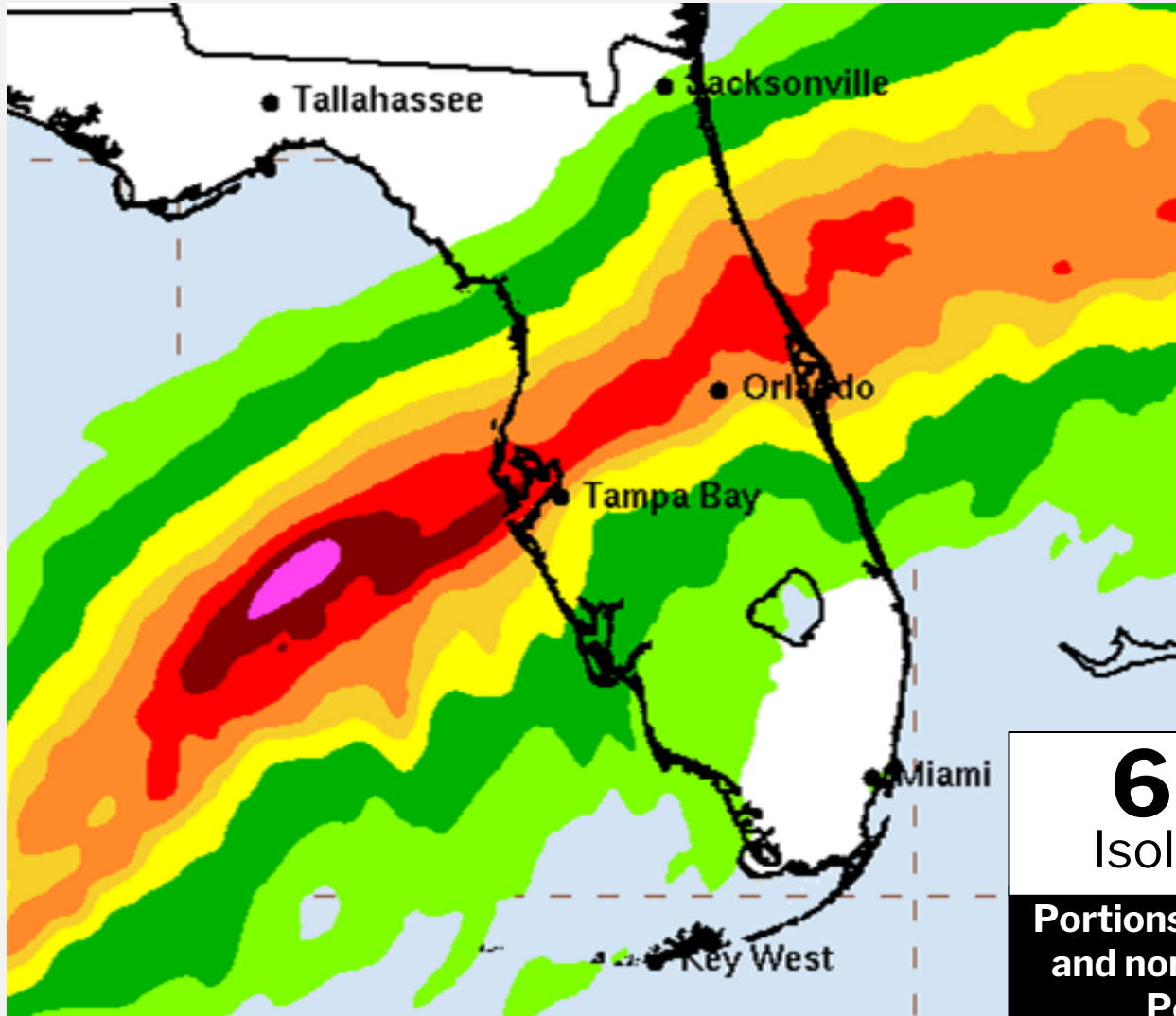
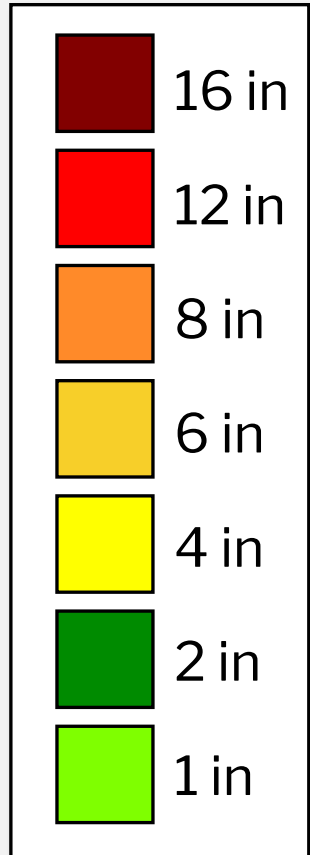


# Milton

NWS Weather Prediction Center  
Updated 6 AM EDT, Wednesday October 9



## 2 DAY RAINFALL



**6-12"**  
Isolated **18"**  
**Portions of the central and northern Florida Peninsula**

# Milton

NWS Weather Prediction Center  
Updated 6 AM EDT, Wednesday October 9



## FLASH FLOOD RISK

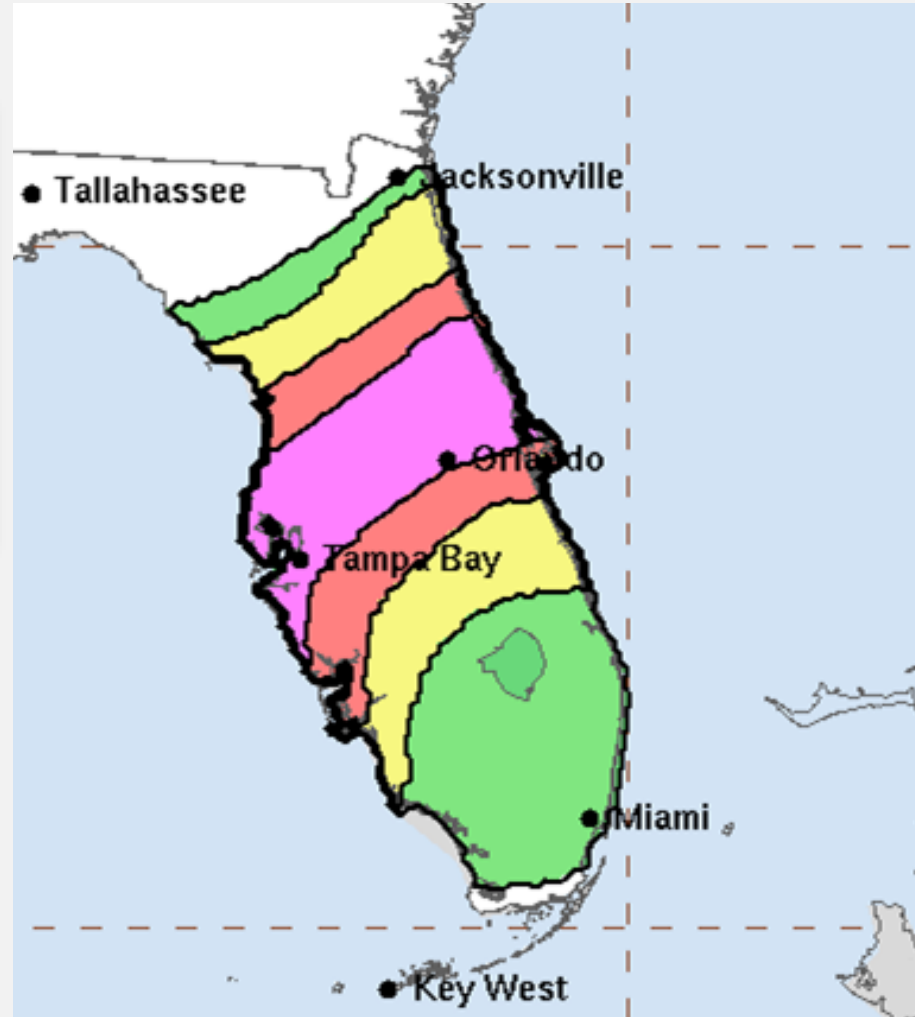
### Risk of Flash Flooding

Marginal

Moderate

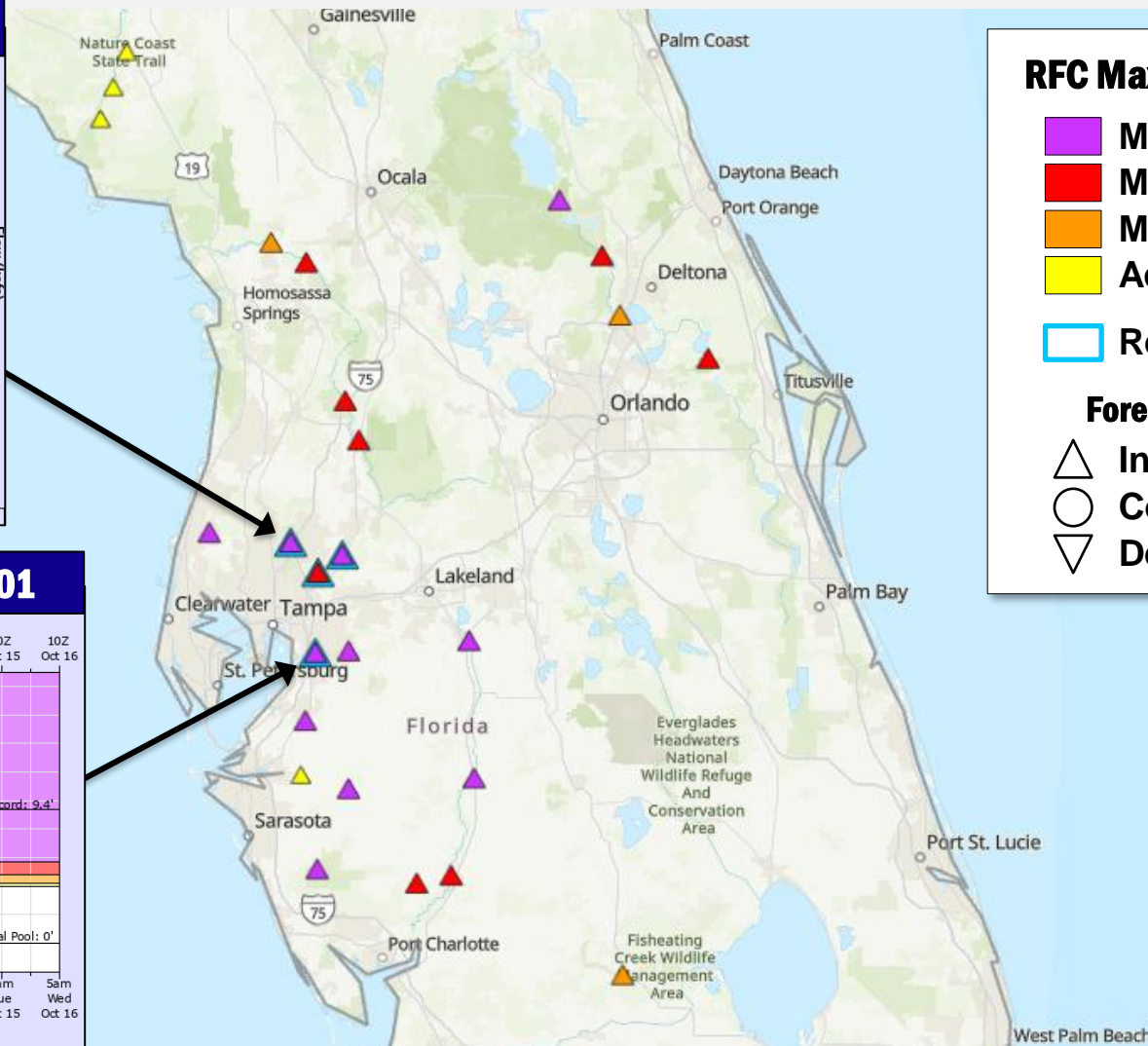
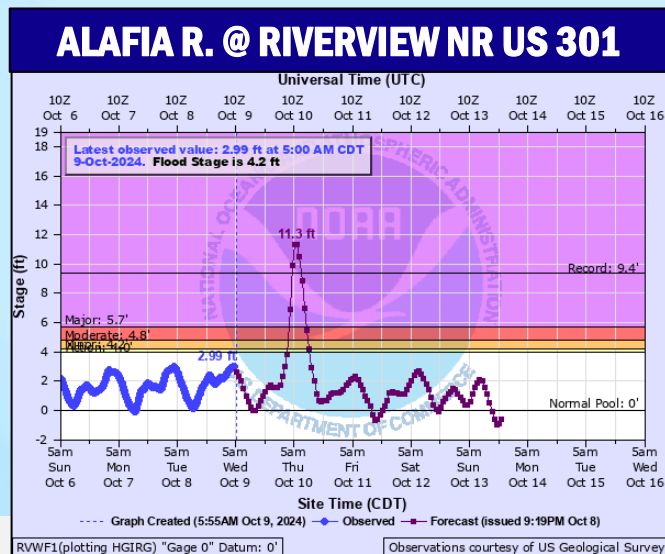
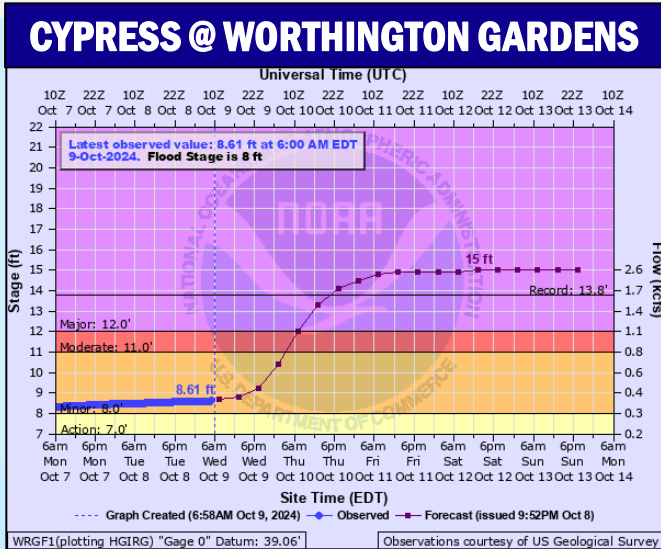
Slight

High



# Major Hurricane Milton

## RFC MAX STAGE FORECAST (TREND)



#### RFC Maximum Stage

- Major
- Moderate
- Minor
- Action
- Record

#### Forecast Trend

- Increasing
- Constant
- Decreasing



# Hurricane Milton (CAT-4) – Florida



**Situation:** Hurricane Milton is forecast to make landfall along the west coast of Florida as a major hurricane. FEMA is pre-staging resources in coordination with Florida emergency management.

**Lifelines:** (TC Milton SLB, as of 6:00 p.m. ET, Oct 8)

## Safety & Security:

- 27 (+16) Counties with Evacuation Warnings: 15 (+6) mandatory; 12 (+10) Voluntary
- 10 USAR teams with swift water staged; 6 USAR teams released to state and 1 enroute
- NORTHCOM: 7 rotary wings, 100 troops, and 30 HWVs with ladders staged

## Food, Hydration, Shelter: (ARC, as of 7:50 a.m. ET, Oct 9)

- 149 shelters open / 31,005 occupants; 15 special needs shelters open
- 640k meals, 23k blankets, and 202k tarps state
- USACE Temp Roofing PRT (AL) and 2 Temp Roofing SMEs (SEOC)

## Health & Medical:

- 525 ambulances, 31 paratransit, 6 air staged
- 2 DMAT w/ cache staged in Atlanta, GA; 4 HCSATs enroute to Tallahassee, FL
- NMTS ambulance contract activated and released to state
- 300 Healthcare facilities evacuated

## Water Systems:

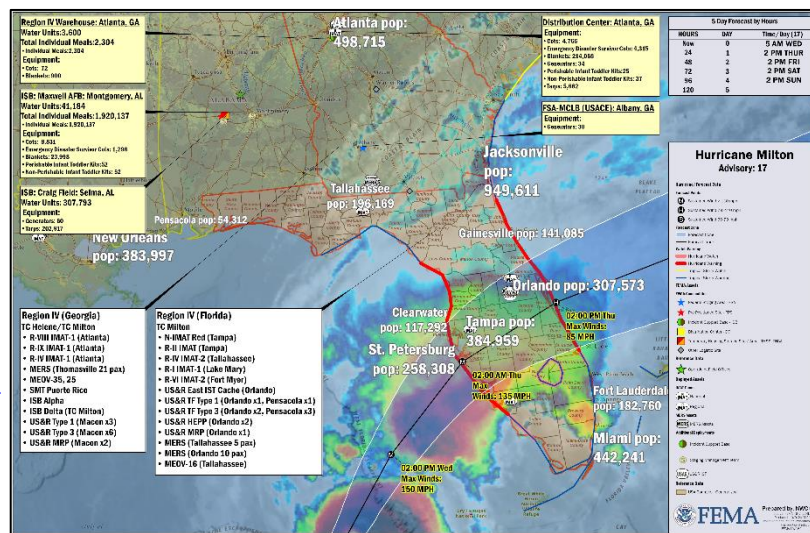
- 1 EPA & 2 USACE water/wastewater SME deploying 10/9
- Several major water systems remain only partially operational (Helene)
- 16 boil water notices affecting 16k customers

## Energy:

- 30 generators staged
- 2 USACE Temp Power PRTs staged

## Communications:

- 13 MERS personnel deployed
- 13 Satellite Data Terminals on hand, estimate 40 by 10/8
- 5 MEOVs, 3 MCOVs, 7 MCOVs staged at Thomasville MERS, and multiple US&R communications assets
- 2 FCC teams enroute to Tampa



## Transportation:

- Rail Services with suspended operations:
  - Amtrak south of Jacksonville suspended through 10/10, with some additional cancellations through 10/11
  - SunRail operations suspended through 10/10
- Airports with suspended operations: Tampa, Punta Gorda, Sarasota/Bradenton, St. Pete-Clearwater, and Orlando Int'l Airports
- Airports with suspended operations:
  - Closing: Tampa Int'l, Punta Gorda, Sarasota/Bradenton Int'l, St. Pete-Clearwater Int'l
  - Ceasing commercial operations 10/9: Orlando Int'l, Melbourne Orlando Int'l, and Southwest Florida Int'l.
- Transit agencies in the impacted area are offering evac transportation to shelters
- Key West, Tampa, Manatee, St. Pete, and Fort Myers are condition closed (condition ZULU)

## State / Tribal Response:

- SEOC at Full Activation (TC Helene)
  - Gov declared State of Emergency for 51 counties; FEMA-3622-EM-FL approved 10/7; FEMA-3623-EM-STF approved 10/8

## FEMA / Federal Response:

- FEMA RIV: RRCC activated to Level I
  - IMAT-1 deployed to GA
  - IMAT-2 deployed to FL SEOC
- NWC is Monitoring; NRCC is at Level I (TC Helene and TC Milton)

## IMAT:

- N-IMAT Red deployed to Tampa, FL
- Region I IMAT deployed to Orlando, FL
- Region II IMAT deployed to Tampa, FL
- Region VI IMAT-2 deployed to Tallahassee, FL
- Region IX IMAT-1 deployed to Atlanta, GA

## US&R:

- Incident Support Team (IST) Blue deployed to FL
- Incident Support Team (IST) Red deployed to FL
- Incident Support Base (ISB) Team Delta deployed to GA
- 417 personnel; 12 (+4) US&R Task Forces deployed; 3 Type 1, 2 MRP, 7 Type 3
- EMAC S&R teams with Swiftwater capability staged, 3 HARTs
- USCG and FEMA are activating FEMA Mission Assignments (MA) for flood response teams for US&R and additional resources in FL, with additional MA in NC for planning

## MERS:

- MERS assets deployed to FL
- Additional MERS teams on standby

The NWC will continue to monitor in coordination with Region IV, with continued reporting twice daily in the FEMA National Situation Report (5:00 p.m./3:00 a.m. ET) and the FEMA Daily Operations Briefing (8:30 a.m. ET).



FEMA

National Watch Center

# Helene – Southeast & Mid-Atlantic



**Situation:** Locally executed, state managed, and federally supported operations continue.

**Lifelines:** (FEMA RIV SLB, as of 6:00 p.m. ET, Oct 8)

## Safety & Security:

- GA: 4 (-8) curfews remain in effect for Richmond County
- NC: Unified local, state, and federal US&R operations ongoing in impact areas with landslides complicating response and recovery efforts; curfews remain in place

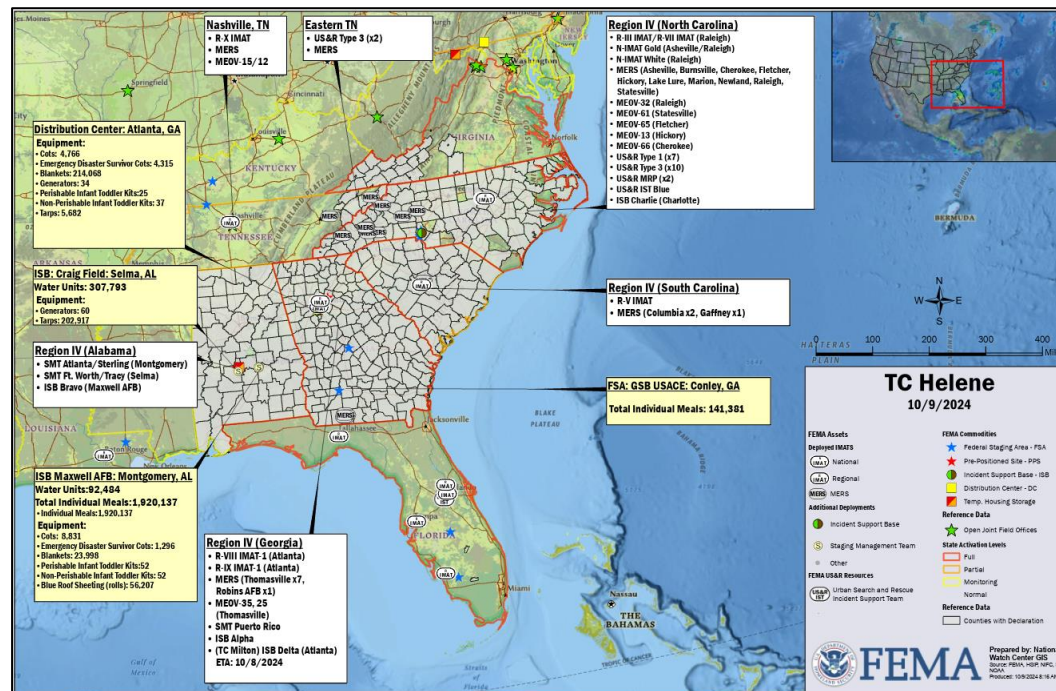
**Food, Hydration, Shelter:** (ARC, as of 7:50 a.m. ET, Oct 9)

- GA: 16 (+8) shelters / 247 (-77) occupants  
3.5M meals/1.4M liters of water received by the state
- NC: 17 (-1) shelters / 715 (-69) occupants  
7.8M meals/9.6M liters of water received by the state
- SC: 5 (-2) shelters / 14 (-51) occupants  
Need for distribution of MREs and water continuing to diminish
- TN: 3 (-1) shelters / 59 (+7) occupants
- FL: Helene  
7 (-7) shelters / 260 (-174) occupants

Milton  
29 shelters / 3126 occupants

## Health & Medical:

- GA: 34 confirmed fatalities
- NC: 84 (+7) confirmed fatalities
- SC: 48 (+1) confirmed fatalities
- TN: 15 (+3) confirmed fatalities
- FL: 23 confirmed fatalities
  - Tampa General Hospital (Davis Islands) will shelter in place; continuing to conduct decompression, ceased elective surgeries
- VA: 2 confirmed fatalities



## Water Systems:

- FL: Water infrastructure restoration continues; 16 Active boil Water Notices affecting 16,345 customers
- GA: 286 (-24) Active Boil Water Notices affecting 87k (-4k) customers; Boil Water Notices are decreasing as systems resume full operations
- NC: Service restoration efforts continue for water and wastewater systems as power is restored; 77 (-7) Active Boil Water Notices affecting 300k customers
- TN: Water infrastructure restoration continues; 19 Active Boil Water Notices advisories remain in place affecting 151k customers
- VA: Wastewater treatment plants in VDEM Regions 4 & 6 disrupted; 19 (-3) Active Boil Water Notices remain in place affecting 69k (-6k) customers

**Energy:** (DOE Eagle-I, as of 7:30 a.m. ET, Oct 9)

- GA: 43k (-14k) (1%) customers without power
- NC: 82k (-31k) (2%) customers without power
- SC: 9k (-12k) (<1%) customers without power

## Communications:

- GA: Power restoration efforts are ongoing with fiber and internet disruptions remaining across the state
- NC: 2 counties with cell sites with 50% plus sites down; 11 of 241 comms towers operating on generator power
- TN: Communication equipment and support augmentation remain in place
- Cell tower status continues to trend upwards; Percentages of population that remain without coverage: NC 14.4%, TN 5.2% (-4.0%)

## Transportation:

- NC: Total 627 (-14) roads closed: 3 Interstates, 49 US routes, 50 (-6) NC routes, 524 (-20) state routes; An estimated 34 bridges will need to be replaced & 43 will require repairs
- TN: I-40, I-26, and 7 US/state routes remain closed; 30 of the 49 state routes originally closed are reopened

## Hazardous Materials:

- VA: Ongoing recovery and restoration efforts to mitigate hazmat, pollutants, and contaminants across impacted areas



# FEMA

National Watch Center



# Helene – Southeast & Mid-Atlantic



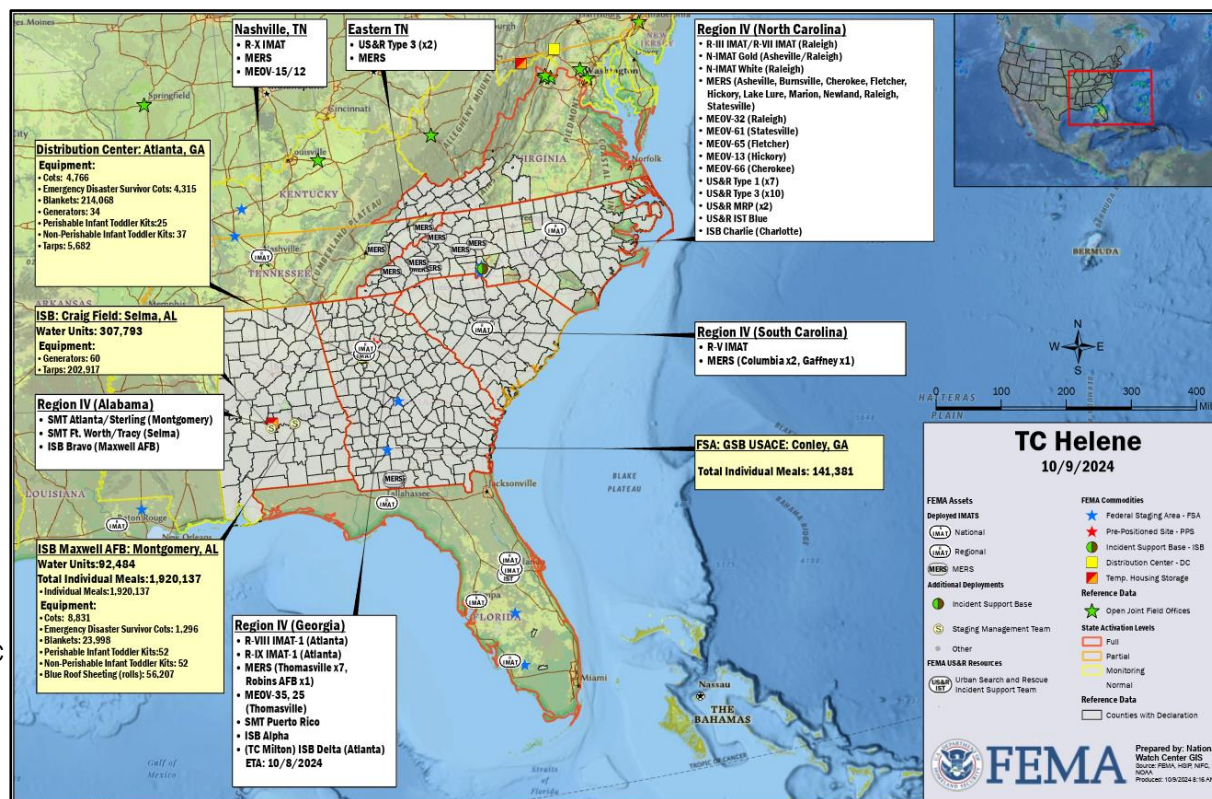
**Situation:** Locally executed, state managed, and federally supported operations continue.

## State / Tribal Response:

- GA: SEOC at Full Activation (TC Helene)
  - Gov declared a State of Emergency; FEMA-4830-DR-GA approved
- NC: SEOC at Full Activation (TC Helene)
  - Gov declared a State of Emergency
  - FEMA-4827-DR-NC approved on Sep 28
- SC: SEOC at Full Activation (TC Helene)
  - Governor declared a State of Emergency
  - FEMA-4829-DR-SC approved on Sep 29
- TN: SEOC at Partial Activation (TC Helene)
  - Gov declared a State of Emergency
  - FEMA-4832-DR-TN approved on Oct 2
- VA: SEOC at Full Activation (TC Helene)
  - Gov declared a State of Emergency
  - FEMA-4831-DR-VA approved on Oct 1
  - VA-TF2 activated; will deploy to Atlanta, GA

## FEMA / Federal Response:

- FEMA RIII: RRCC is Rostered; LNOs deployed to VDEM
  - FEMA Region III IMAT deployed to Raleigh, NC
- FEMA RIV: RRCC activated to Level I
  - IMAT-1 deployed to GA SEOC
  - IMAT-2 deployed to FL SEOC
- HQ: NWC is Monitoring; NRCC is at Level I
  - National Responder Mobilization Team deployed to Grapevine, TX



The NWC will continue to monitor in coordination with Region IV, with continued reporting twice daily in the FEMA National Situation Report (5:00 p.m./3:00 a.m. ET) and the FEMA Daily Operations Briefing (8:30 a.m. ET).

## IMAT:

- N-IMAT Blue deployed to Tallahassee, FL
- N-IMAT Gold deployed to Raleigh/Asheville, NC
- N-IMAT White deployed to Raleigh, NC
- FEMA Region III IMAT deployed to Raleigh, NC
- FEMA Region V IMAT deployed to West Columbia, SC
- FEMA Region VII IMAT deployed to Raleigh, NC
- FEMA Region VIII IMAT deployed to Atlanta, GA
- FEMA Region X IMAT deployed to Nashville, TN

## Logistics:

- SMT Atlanta and SMT Sterling deployed to Montgomery, AL
- SMT Puerto Rico deployed to Atlanta, GA
- SMT Ft. Worth and SMT Tracy deployed to Selma, AL
- ISB Team Alpha deployed to Atlanta, GA
- ISB Team Bravo deployed to Montgomery, AL
- ISB Team Charlie deployed to Charlotte, NC
- ISB Team Delta deployed to Atlanta, GA

## US&R:

- 24 US&R Task Forces deployed
- Incident Support Team (IST) Blue deployed to NC/TN

## MERS:

- MERS assets deployed to FL, AL, GA, and NC
- Additional MERS teams on standby



# FEMA

National Watch Center

# Declaration Approval – Seminole Tribe of Florida

**Declaration:** Emergency Declaration – FEMA-3623-EM-STF

**Date Requested:** Oct 6

**Date Approved:** Oct 8

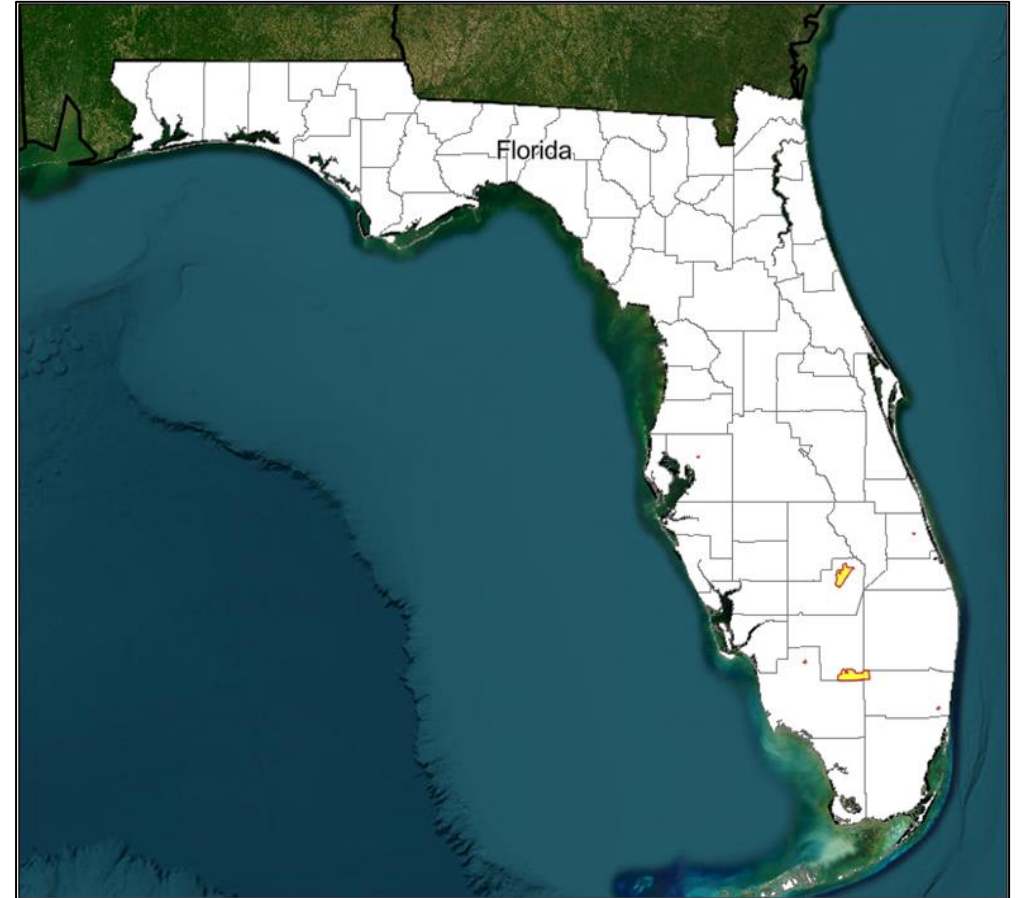
**Incident:** Hurricane Milton

**Incident Period:** Oct 5 and continuing

**Provides:**

- **PA:** Debris removal and emergency protective measures (Categories A and B) for all tribal lands

**FCO:** Leda M. Khoury

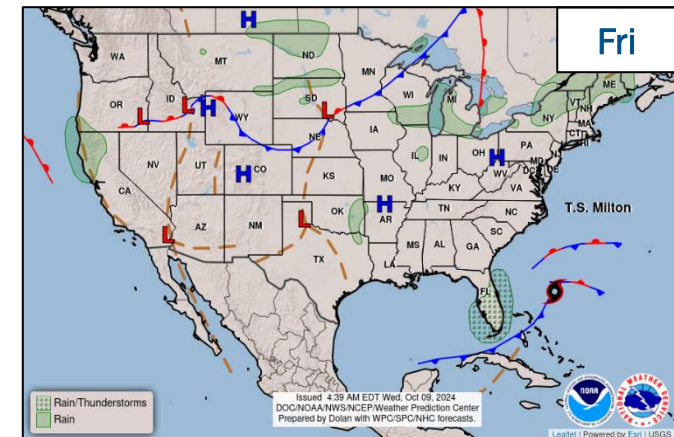
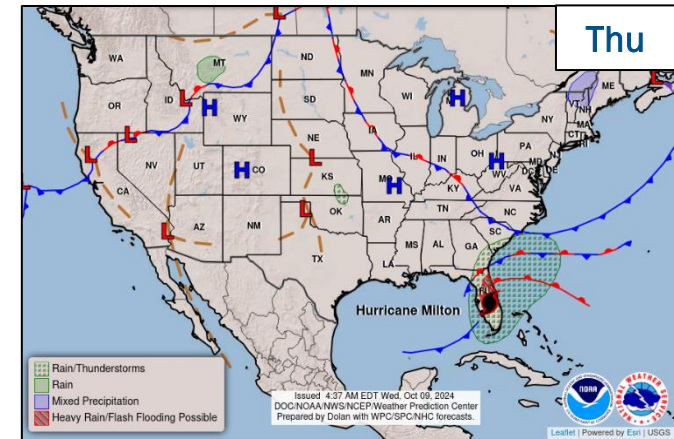
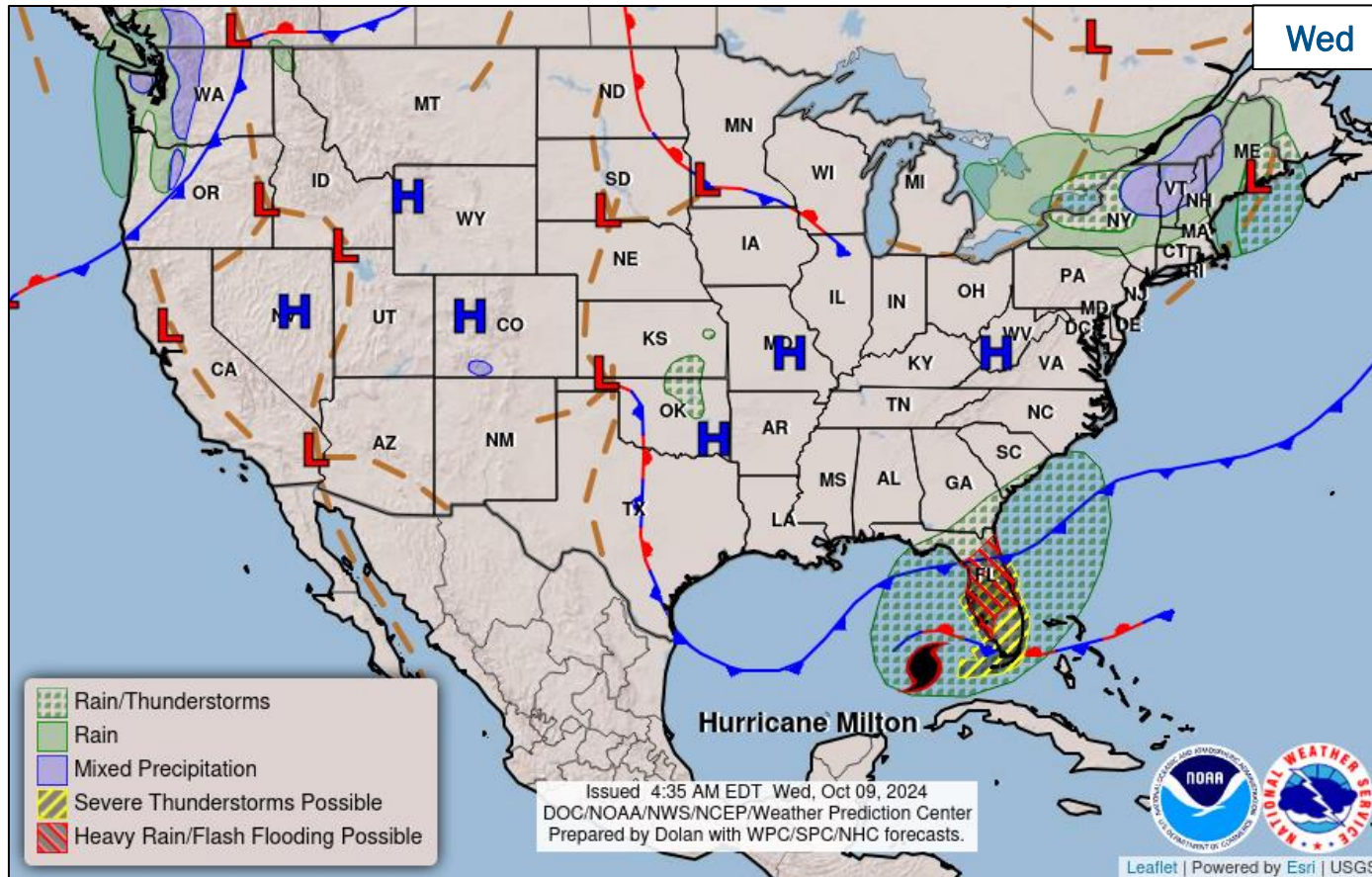


■ PA



**FEMA**

# National Weather Forecast



FEMA

National Watch Center

# Wildfire Summary

Fire Name (County, ST)	FMAG #	Acres Burned	Percent Contained	Evacuations	Structures (Homes / Other)			Fatalities / Injuries
					Threatened	Damaged	Destroyed	
Elk Fire (Sheridan, WY)	5539-FM-WY	75,969 (+1,284)	16% (+6)	M: 499	H: 1,200	H: 0	H: 3	0 / 4 (+2)
				V: 0	O: 250	O: 0	O: 15	

(Evacuations: M = Mandatory / V = Voluntary; Structures: H = Homes and Mixed Commercial/Residential / O = Non-residential Commercial/Other Minor Structures)



**FEMA**

# FEMA Common Operating Picture

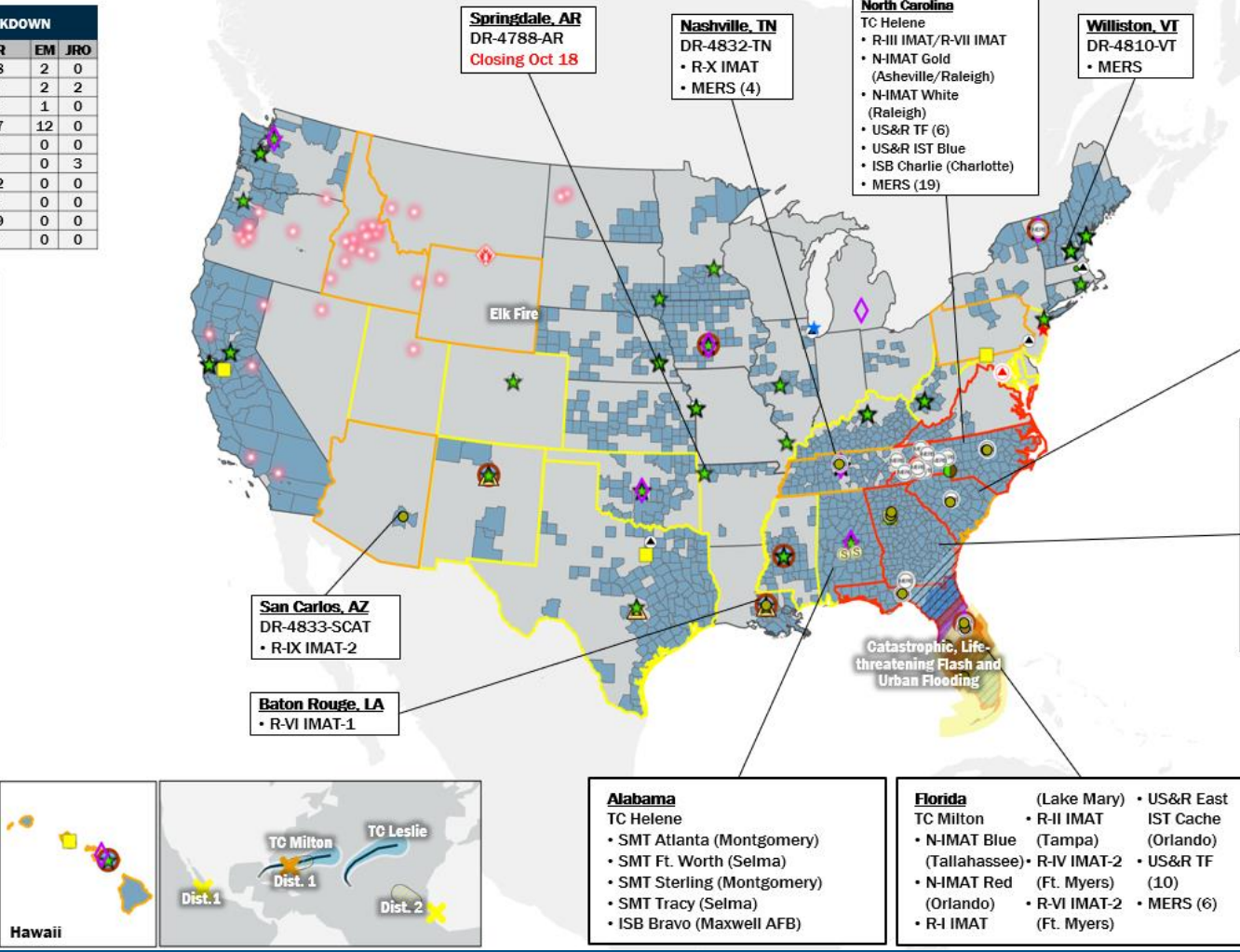
**28 + 5** Joint Field Offices Virtual Joint Field Offices  
**111 + 17** Supporting Major Disasters Emergency Declarations  
**12** Direct Housing Missions  
**17** RSF-Supported Disasters  
**5** Joint Recovery Offices

Wednesday  
 October 9, 2024  
 8:30 a.m. ET

FEMA HQ	
NWC	NRCC
Monitoring	Level I
FEMA REGIONS	
Watch	RRCC
Monitoring	I Rostered
Monitoring	II Rostered
Monitoring	III Rostered
Monitoring	IV Level I
Monitoring	V Rostered
Monitoring	VI Rostered
Monitoring	VII Rostered
Monitoring	VIII Rostered
Monitoring	IX Rostered
Monitoring	X Rostered
Notes:	
<b>NRCC/RWCs/RRCCs:</b> • NRCC: TC Helene • RIV RRCC: TC Milton/TC Helene	<b>State EOCs:</b> • OK: Severe Weather • HI/ID/OK/NM/UT/WY: Wildfires • AZ: SW Border • CO: Hwy. 50 closure/Avian Flu • NM/AZ: Flooding • TX: TC Francine • PA: TC Debby • WV: Drought • FL/AL/GA/MS/NC/SC/TN/KY/VA: TC Helene • DC: Election Monitoring • NJ: Protests
Volunteer Force	
Rostered 7,860	Deployed 7
Surge Capacity Force	
Rostered 7,828 (+29)	Deployed 190 (+1)

N-IMATs	
1 Team Available	
Red	FL (Oct 6)
White	NC (Sep 30)
Blue	FL (Sep 23)
Gold	NC (Sep 23)
HS	
R-IMATs	
≤ 3 Teams Available	
I	FL (Oct 7)
II	FL (Oct 6)
III	NC (Sep 29)
IV-1	GA (Oct 5)
IV-2	FL (Oct 6)
V	SC (Sep 29)
VI-1	LA (Sep 10)
VI-2	FL (Oct 7)
VII	NC (Sep 25)
VIII	GA (Sep 24)
IX-1	GA (Oct 7)
IX-2	AZ (Oct 8)
X	TN (Sep 29)
Fully Mission Capable (FMC)	
Partially Mission Capable (PMC)	
Not Mission Capable (NMC)	
Deployed	

REGIONAL BREAKDOWN				
	JFO/VJFO	DR	EM	JRO
I	4/0	18	2	0
II	3/1	6	2	2
III	1/0	5	1	0
IV	4/0	27	12	0
V	2/0	4	0	0
VI	5/0	9	0	3
VII	3/1	12	0	0
VIII	1/1	2	0	0
IX	2/1	19	0	0
X	3/1	9	0	0



**FEMA HQ**  
 Regional Offices  
 Joint Field Offices  
 Joint Recovery Offices  
 Direct Housing Mission  
 Active RSF Missions  
 Pre-Positioned Sites  
 Federal Staging Area  
 Incident Support Base  
 Distribution Center  
 Temporary Housing Storage Area/Site  
 Large Fires  
 Staging Management Team

**State Activation**  
 Full  
 Partial  
 Monitoring  
 Declared  
 Counties

## IM Workforce

13,796 (+6) Assigned  
 4,443 (-16) Unavailable  
 7,927 (+121) Deployed  
 8% / 1,115 (-90) Available

## IM Cadre Availability

17 Cadres ≤ 25% Availability

Civil Rights: 22% (37/167); Disability Integration: 2% (1/43); Disaster Survivor Assistance: 0% (3/1,203); External Affairs: 5% (24/521); Environmental Planning and Historic Preservation: 10% (84/821); Field Leadership: 9% (14/149); Financial Management: 17% (39/237); Hazard Mitigation: 6% (68/1,189); Human Resources: 6% (11/173); Individual Assistance: 1% (14/2,579); Information Technology: 1% (4/667); Logistics: 6% (99/1,606); Operations: 4% (14/338); Public Assistance: 11% (258/2,255); Planning: 3% (12/443); Safety: 5% (5/94); Security: 12% (16/137)

**MERS**  
 33%-65%

36 Assigned  
 0 Unavailable  
 23 (+1) Deployed  
 13 (-1) Available

**US&R**  
 < 33%

28 Assigned  
 0 Unavailable  
 24 Deployed  
 4 Available

**FCO**  
 1 Type I

51 (+1) Assigned  
 4 Unavailable  
 46 (+1) (35 FCOR) Deployed  
 1 Available

# Joint Preliminary Damage Assessments

Region	State / Location	Incident	IA	Number of Counties/Jurisdictions		Start – End
			PA	Requested	Complete	
IV	NC	Tropical Cyclone Debby Aug 5-19	IA	0	0	N/A
			PA	1	0	9/23 – TBD
IX	Navajo Nation	Shiprock Flooding Aug 25	IA	1	0	10/7 – TBD
			PA	1	0	10/7 – TBD
X	CCT	Swawilla Fire and Bridge Creek Fire – Colville Resrv. Jul 14 to Aug 21	IA	0	0	N/A
			PA	1	0	10/7 – TBD
	OR	Multiple Wildfires Jul 10 – Aug 23	IA	0	0	N/A
			PA	7	0	10/7 – TBD
	AK	Ketchikan Landslide Aug 25	IA	0	0	N/A
			PA	1	0	10/7 – TBD



FEMA

# Declaration Requests in Process – 12

State / Tribe / Territory – Incident Description	Type	IA	PA	HM	Requested
OH – Train Derailment	DR	X	X	X	Jul 3, 2023
NY – Severe Storms, Tornadoes, Straight-line Winds, and Flooding	EM		X		Jul 20
NE – Severe Storms, Straight-line Winds, Tornadoes, and Flooding	DR		X	X	Aug 29
MI – Severe Storm and Tornadoes (APPEAL)	DR	X		X	Sep 11
CRST* – Severe Storms, Straight-line Winds, and Flooding	DR	X	X	X	Sep 12
USVI – Tropical Storm Ernesto	DR		X	X	Sep 13
SC – Tropical Storm Debby	DR	X	X	X	Sep 16
NY – Severe Storms, Straight -Line Winds and Flooding	DR	X	X	X	Sep 18
AK – Flooding	DR	X	X	X	Sep 19
HT** – Flooding	DR	X	X	X	Sep 20
CA – Park Fire and Borel Fire	DR	X		X	Sep 24
CTM*** – Severe Storm and Straight-line Winds	DR	X		X	Oct 7
STF**** – Hurricane Milton – <b>APPROVED</b>	EM		X		Oct 6

\*Cheyenne River Sioux Tribe, \*\*Havasupai Tribe, \*\*\*Crow Tribe of Montana, \*\*\*\*Seminole Tribe of Florida



**FEMA**

National Watch Center

# Declaration Amendments

Declaration	Number	Issued	Action
FEMA-4831-DR-VA	2	Oct 8	Adds 6 counties and 1 independent city for Individual Assistance (already designated for debris removal and emergency protective measures [Categories A and B])



**FEMA**





# FEMA

Helping people before, during, and after disasters.



*Scan to subscribe to this briefing.*