

FEMA National Watch Center

Daily Operations Briefing

Monday, August 21, 2023

8:30 a.m. ET



FEMA

National Current Ops / Monitoring

New Significant Incidents / Ongoing Ops

- Post-Tropical Cyclone Hilary – CA
- Tropical Activity Preparations – Atlantic
- Wildfires – WA
- Wildfires – HI

Hazard Monitoring

- Heavy Rain and Flash Flooding – California and the Northern Rockies to the Southwest
- Critical Fire Weather – Texas
- Tropical Activity:
 - Atlantic:
 - Tropical Storm Emily; Tropical Storm Franklin; Tropical Storm Gert
 - Disturbance 1: High (80%); Disturbance 2: High (70%);
 - Eastern Pacific :
 - Post-Tropical Cyclone Hilary
 - Disturbance 1: Low (30%)

Disaster Declaration Activity

- No new disaster activity

Event Monitoring

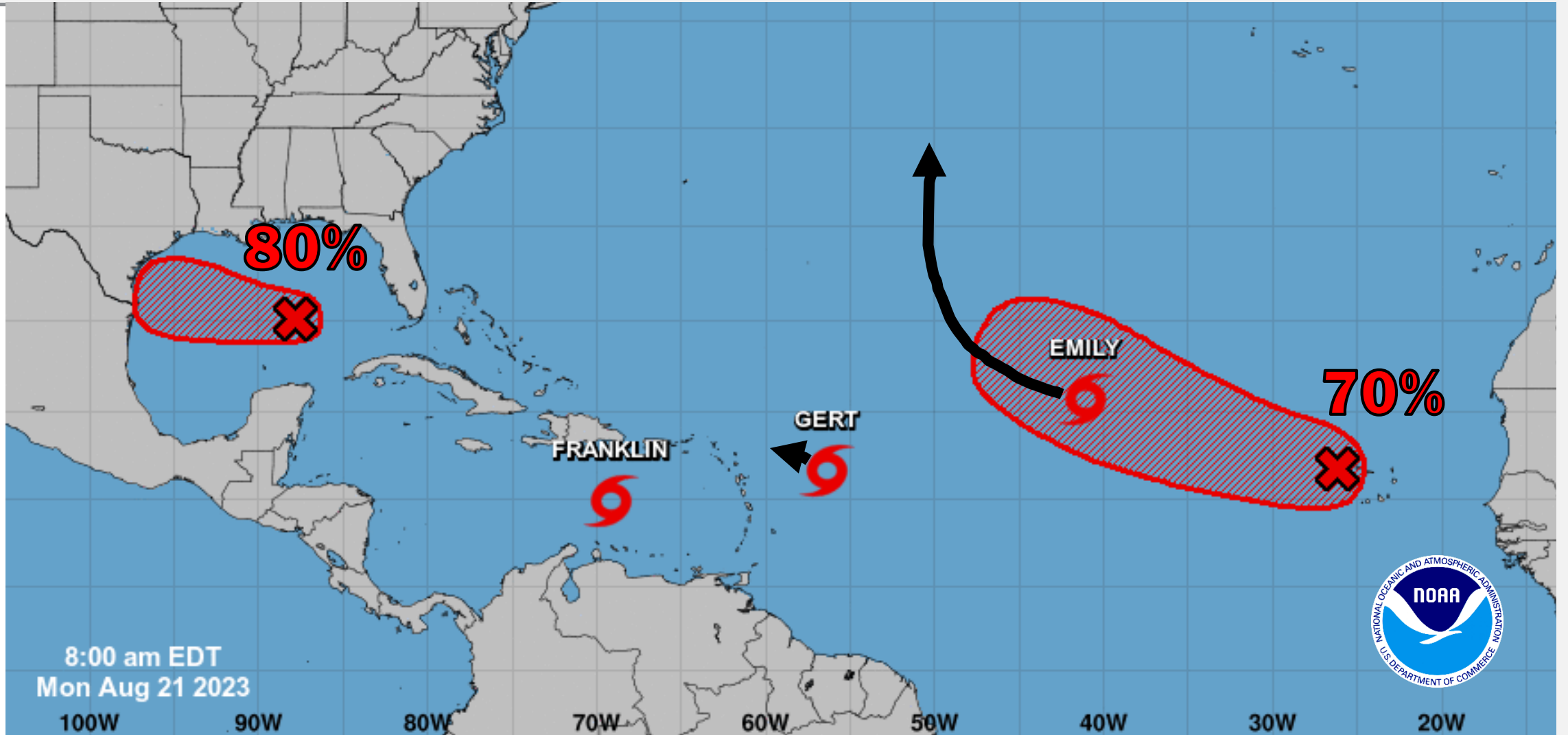
- No significant events



FEMA

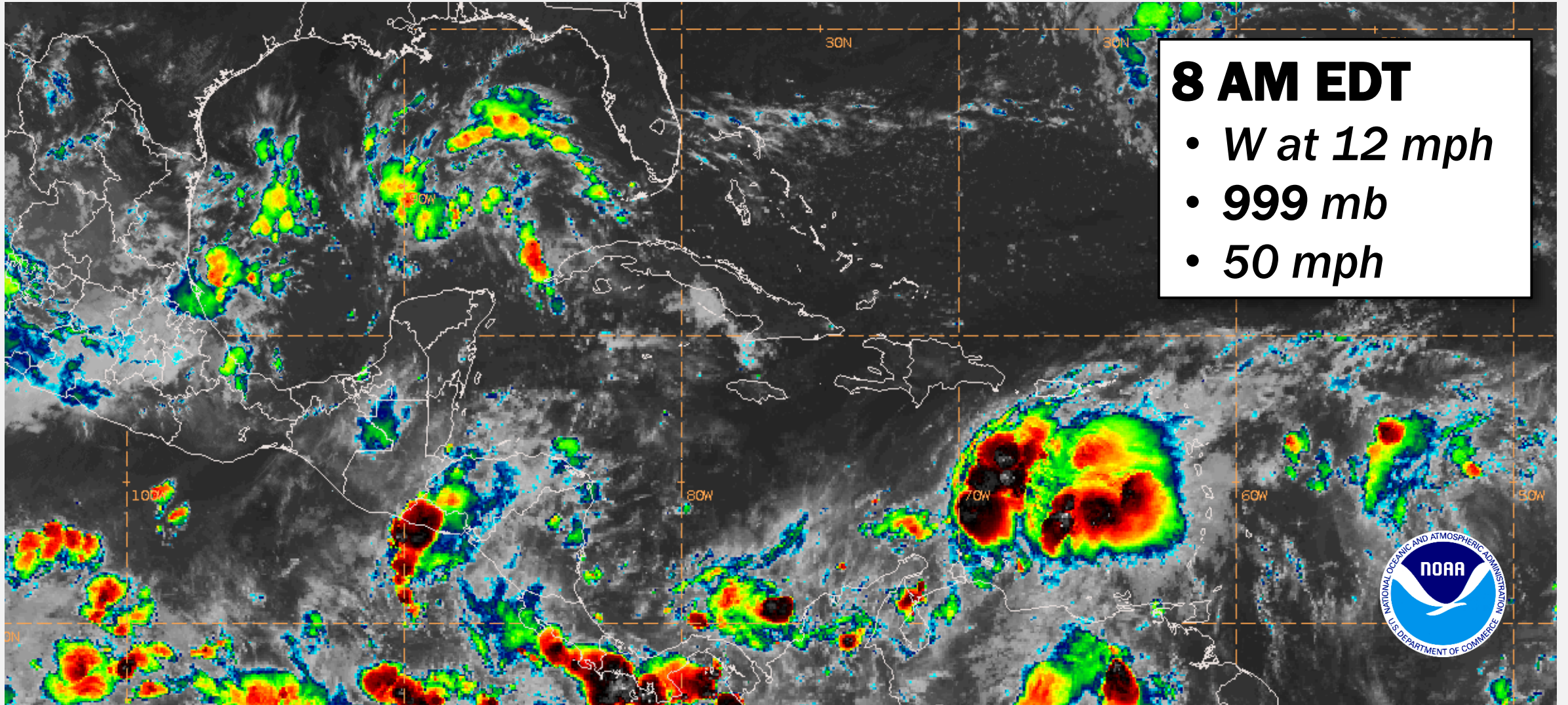
Atlantic Overview

TROPICAL OUTLOOK



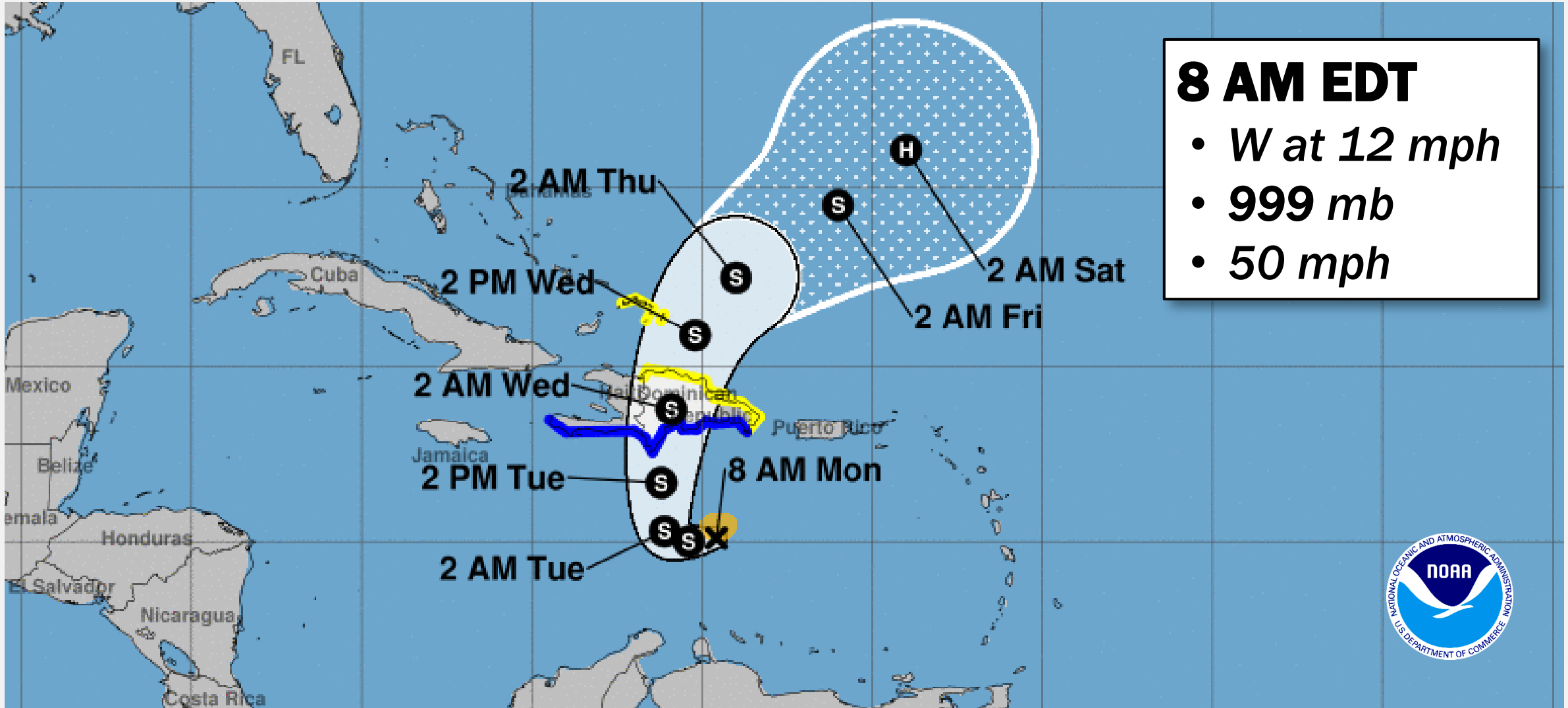
Tropical Storm Franklin

SATELLITE LOOP



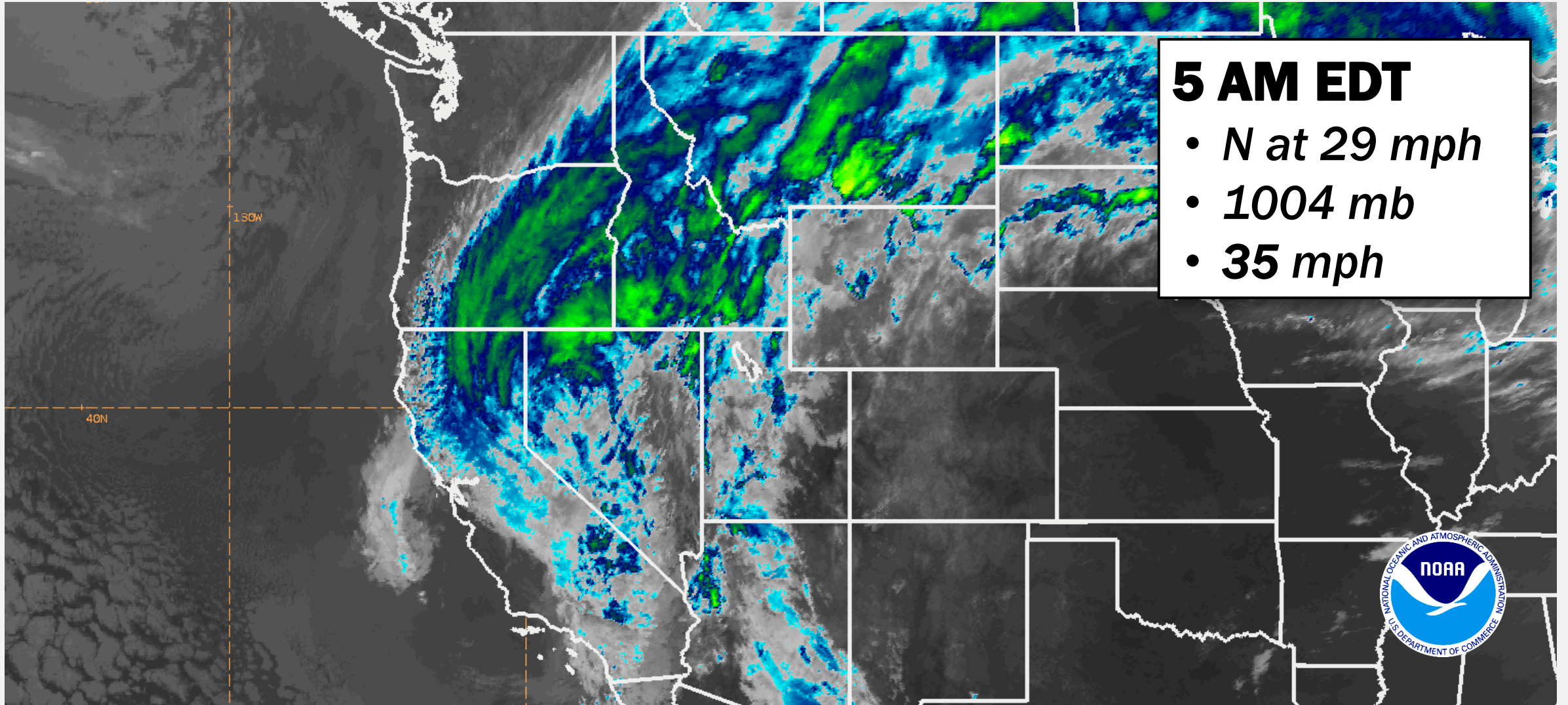
Tropical Storm Franklin

FORECAST TRACK



Post-Tropical Cyclone Hilary

SATELLITE LOOP



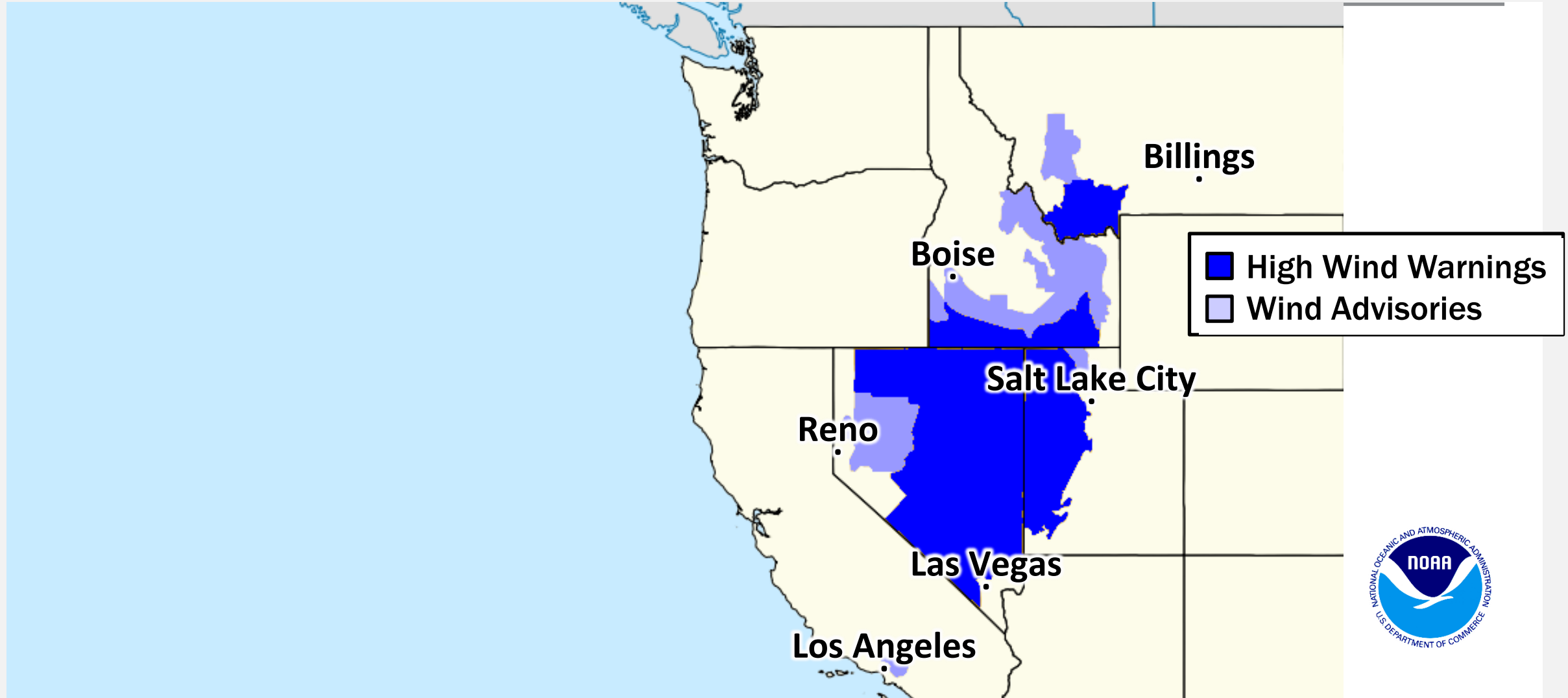
Post-Tropical Cyclone Hilary

FORECAST TRACK



Post-Tropical Cyclone Hilary

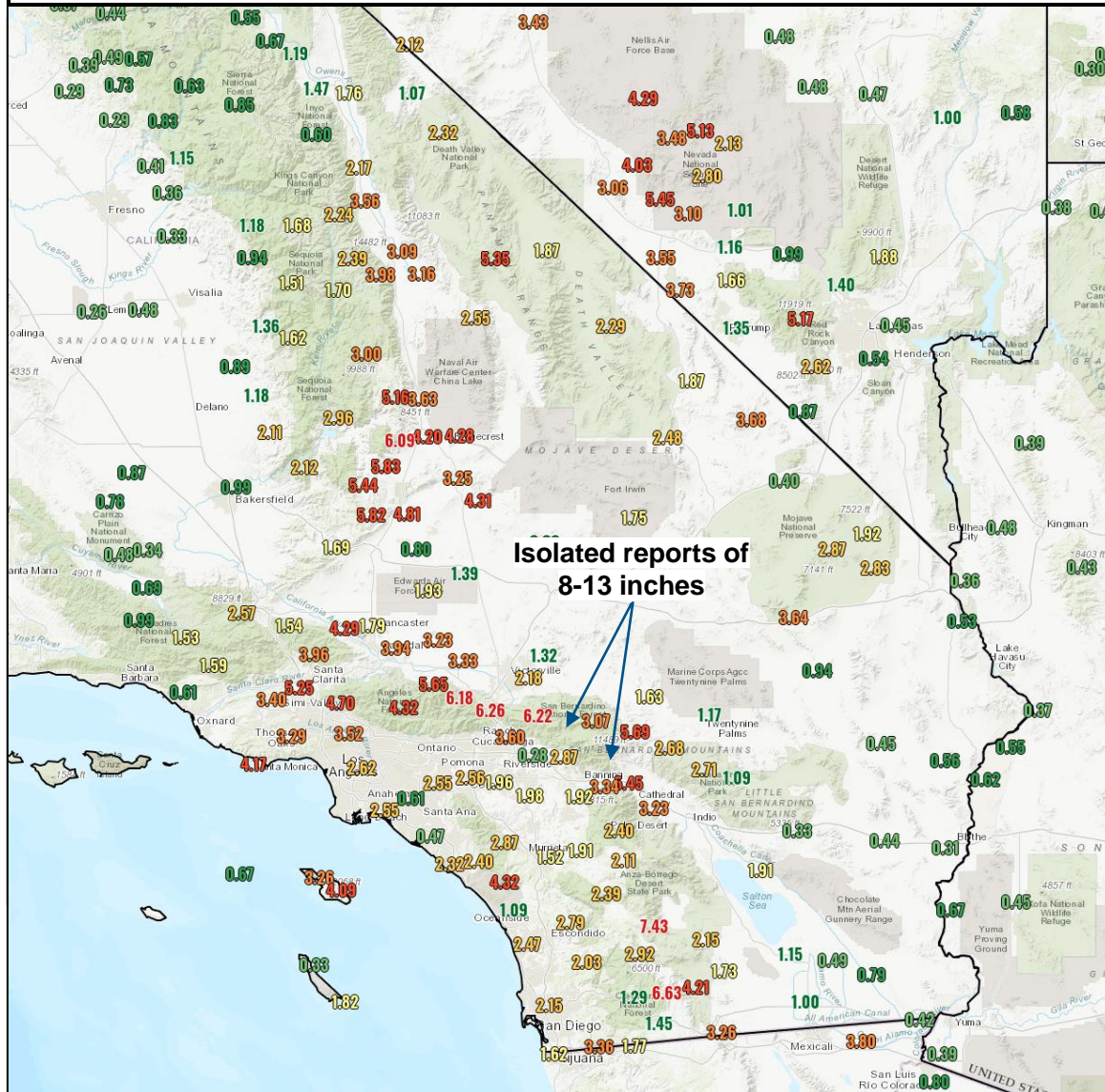
HIGH WIND WATCHES AND WARNINGS



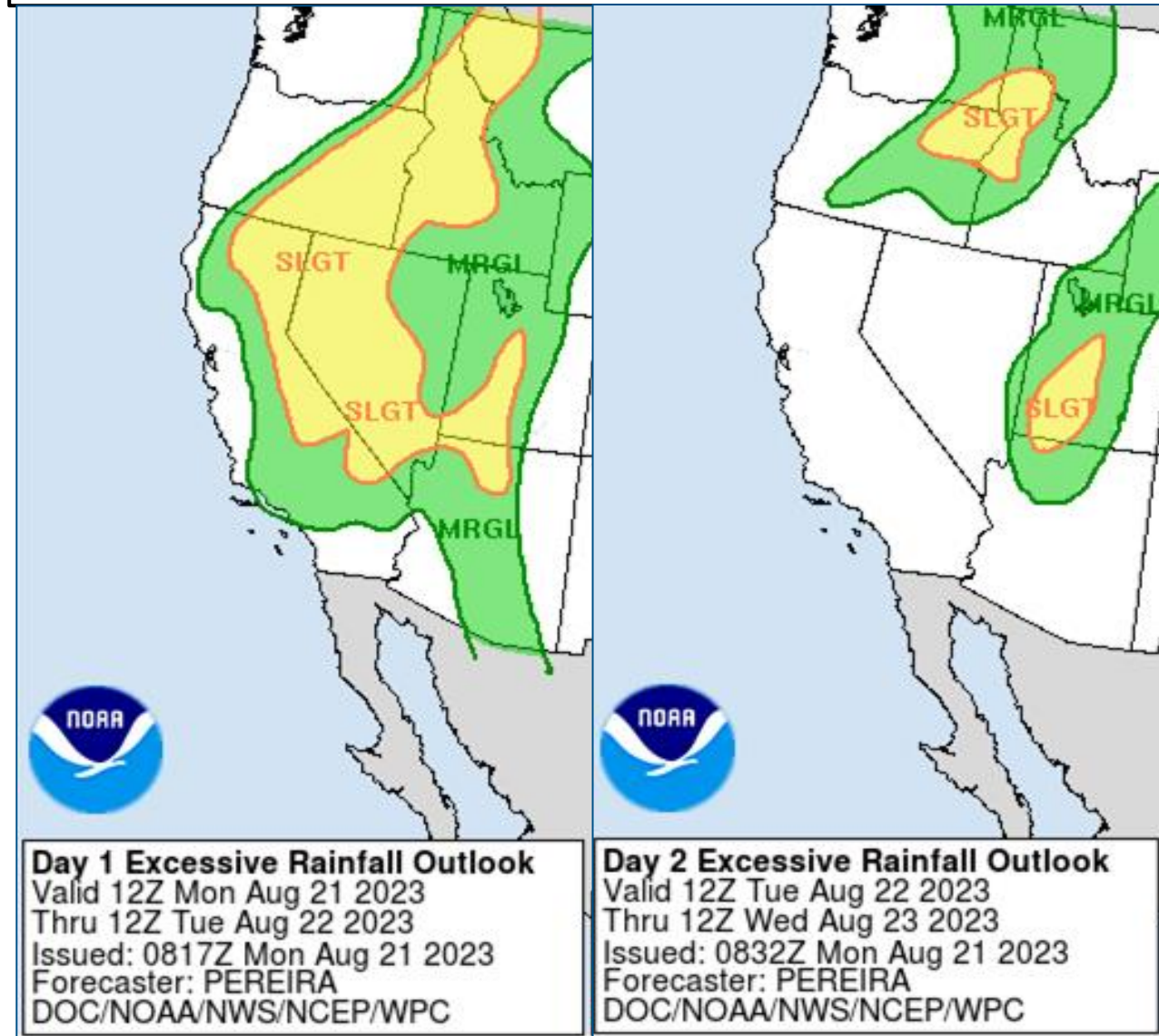
NWS Weather Prediction Center

Updated 6 am EDT, Monday, Aug. 21, 2023 - Hurricane Hilary Rainfall Observations and Latest Outlook

48 Hour Observed Rainfall Ending 6 am EDT, Aug. 21, 2023



Excessive Rainfall / Flash Flood Risk Today and Tuesday



Post-Tropical Cyclone Hilary – California

Current Situation: Areas impacted by Post-Tropical Cyclone Hilary are forecasted to receive 3 - 6 inches of rain with isolated areas up to 10 inches, which may result in significant debris accumulation and landslides. Federal resources are prepositioned across the region and are prepared to support impacted communities as requested. Hilary has been downgraded to a Post-Tropical Cyclone

Lifelines: (FEMA HQ SLB #2 as of 6:00 a.m. ET, Aug 21)

Safety and Security:

CA:

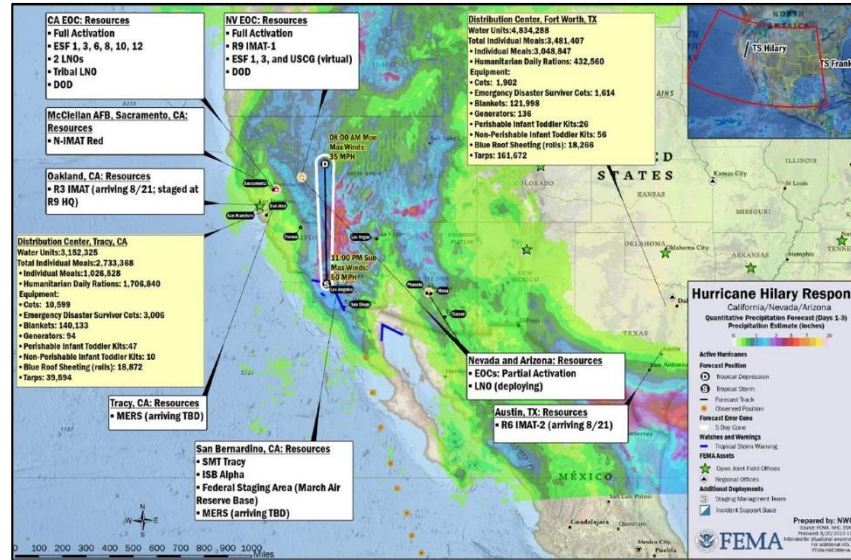
- USCG pre-positioning search and rescue assets in San Diego, Sacramento, Forward Operation Base Mugu
- 19 NGB personnel and 8 high-water vehicles staged in California
- 3 homeless encampments in LA and Ventura counties removed for flooding risk; 5 encampments in OC evaluated for removal
- Evacuation warning issued and approximately 9k residents evacuated from affected areas

NV:

- 100 NGB personnel and 24 high-water vehicles staged in Nevada. 350 additional personnel requested with projected fulfillment by Aug 23

Food, Hydration, Shelter:

- Meals, water, cots, blankets, DME, CMS, CUSI, infant and toddler kits all pre staged March Air Reserve Base
- 17 truckloads of commodities and 3 truckloads of command-and-control equipment ready to deploy if requested at March Air Reserve Base
- 3 shelters in El Centro, Mission Viejo, and Redlands



Health and Medical: (FEMA HQ SLB #2 as of 6:00 a.m. ET, Aug 21)

- Catalina Island Medical Center sheltering-in-place; generator with 5 days of fuel on hand
- All 5 hospitals running under normal operations
- Generators, bill of materials kits and fuel staged at DC Tracy
- HHS deployed 16 (+7) personnel to support preparedness and response operations

Energy:

- Minimal power outages reported across the state (Eagle-I DOE, as of 2:00 a.m. ET, Aug 21)
- Generators, bill of materials kits and fuel staged at DC Tracy

Communications:

- 45 (+11) total zip codes with degradation in service statewide
- 5 (+1) MERS personnel arrived in Tracy, CA on Aug 20; 7 enroute to Victorville, CA

Transportation:

- Commercial Logistics Augmentation (CLASS) & National Cross Dock/ISB transportation contracts being prepared
- Metrolink & North County Transit District will modify or cancel service as needed in San Clemente & San Diego counties

State / Local Response:

- CA EOC at Full Activation (Flooding/Heat); Governor declared a SOE
- NV EOC at Full Activation, Virtual Nightshift (Flooding); Governor declared a SOE

FEMA / Federal Response:

- Region IX:
 - IMAT-1 deploying to NV EOC
 - 2 LNOs deployed to CA; 1 LNO deploying to NV; Tribal LNOs activated
 - ESFs 1, 3, 6, 8, 10, 12 and DoD activated
 - FEMA HQ
 - NRCC is activated 24/7
 - National IMAT Red deployed to CA; National IMAT Gold is on Alert
 - FEMA Region III R-IMAT deployed to CA
 - Staging Management Team (SMT) and Incident Support Base (ISB) teams deploying to CA
 - Disaster Survivor Assistance Strike Team (DSAT) activated in CA
 - MERS support deploying to DC Tracy, Temecula, and southern CA
 - Federal Staging Area (FSA) established at March Air Reserve Base (ARB)
 - 2 FEMA US&R Type 3 Task Forces with 45 personnel each on alert to support California and Nevada
- Please see the NRCC Senior Leadership Briefing published twice daily at 6 am and 6 pm for additional details.



FEMA

Tropical Activity Preparations – Atlantic

Current Situation:

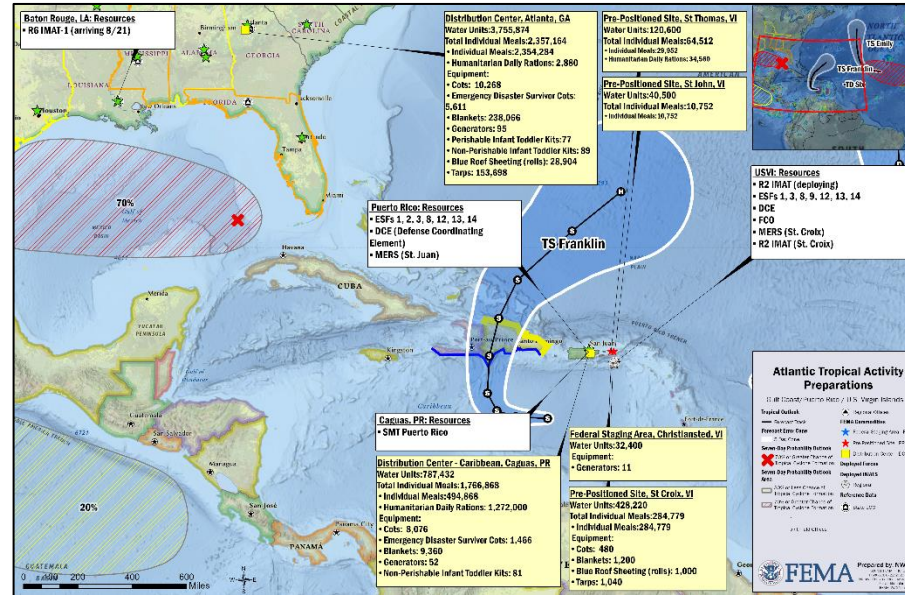
FEMA continues to prepare for possible response and recovery efforts focusing on FEMA Regions II, IV, and VI. The National Hurricane Center is monitoring several tropical disturbances in the Atlantic and the Gulf of Mexico that may pose a threat to US interests over the next several days.

State / Local Response:

- TX EOC at Monitoring (wildfire activity)
- FL EOC Partial Activation (TC Ida)
- MS EOC Partial Activation (Severe Weather)
- AL & TN Monitoring (Severe Weather)
- LA, PR and USVI EOCs at Normal Operations; VITEMA and PREMB are monitoring for potential activation

FEMA / Federal Response:

- Region IV
 - Monitoring potential tropical weather threats will further assess situation today
 - RRCC, DIVS, and IGA rostered
- Region VI
 - RRCC rostered
 - IMAT-1 is deploying to Baton Rouge, LA today
 - IMAT-2 is deploying to Austin, TX today



FEMA / Federal Response:

- Region II (*FEMA RII SLB 20AUG23*)
 - RWC is **Monitoring**
 - RRCC will activated at Level III (Day shift only) with ESFs 1, 2, 3, 8, 12, 13, 14 and DCE
 - Response and Recovery Augments deploying to PR and USVI
 - IMAT deployed to St. Croix with ESFs 1, 3, 8, 9, 12, 13, 14 and DCE
 - Collateral IMAT deployed to St. Thomas with ESFs 1, 2, 3, 8, 12, 13, 14 and DCE
 - **Ad-Hoc IMAT deployed to PR**
 - LNOs deploying upon activation of EOCs
 - FCOs **deployed to PR** and USVI
 - LNO deployed to NRCC
 - **PREMB activating to partial activation at 0800 including all 10 zones**
 - **All resources deployed for RII**
- FEMA HQ
 - NRCC activated (day shift)
 - Staging Management Team (SMT) **deployed** to PR
 - Disaster Survivor Assistance (DSA) placed on Alert
 - MERS support deploying to USVI and PR



FEMA

Spokane Co. Wildfires – Washington



Situation: On August 18, 2023, the Gray and Oregon Fires in Spokane County, Washington, began. The Oregon Fire is burning at the Pend Oreille County boundary and the Gray Fire is burning on public and private land near Medical Lake (pop 5,060). As fire speeds drop, better understanding of how the fires will affect the infrastructure will be available. In Spokane County, there are now 7 other smaller wildfires burning.

Lifelines Impacts: (Washington State EOC Report as of 9:55 p.m. ET, Aug 20)

Safety and Security:

- Approximately 20,170 total acres burned, 1,850 total residences threatened, 220 total residences destroyed; 1 confirmed fatality

Food, Hydration, and Shelter:

- Mandatory evacuations
 - Oregon Road Fire 4,000 (ISS 209)
 - Gray Fire 1,000
- Boil Water Advisory: Portions of Medical Lake
- Red Cross reports three shelters with 226 occupants overnight

Health and Medical:

- Air Quality Index: Very Unhealthy to Hazardous
- Eastern Washington Hospital: Running on generator power

Energy:

- Minimal power outages throughout the state of Washington

Communications:

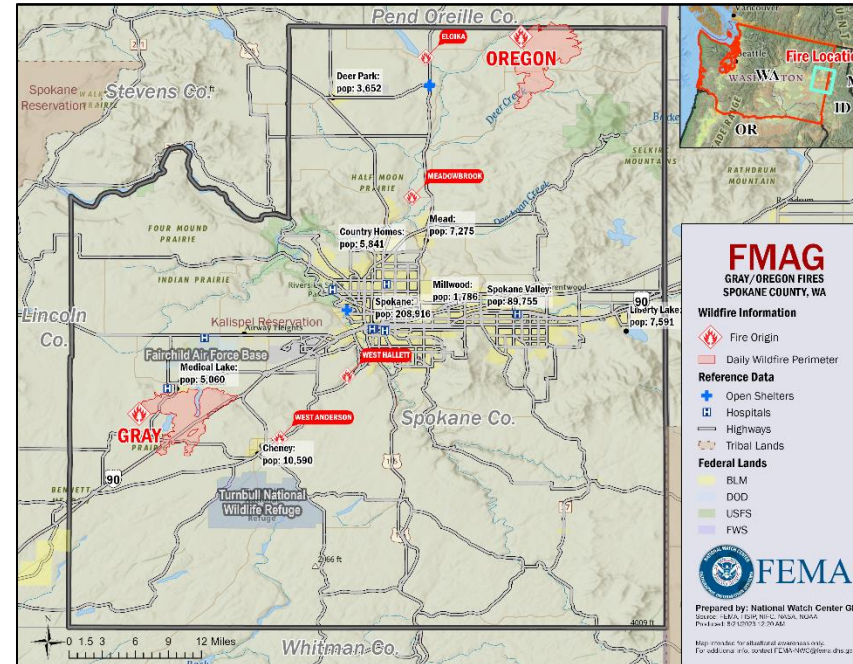
- Limited telecommunications due to impacted cell towers in the area surrounding the Gray Fire
- Eastern State Hospital: Primary and secondary fiber cut

Transportation:

- All of SR 902 closed in both directions until further notice. All of SR 904 closed in both directions until further notice. SR231 is closed from MP 28 near Reardan to MP 1 at Sprague. I-90 closed in both directions from MP 245 to MP 277.7 until further notice.

Hazardous Material:

- Increased risk of hazardous materials due to burning fuels across Spokane County



State / Local Response:

- WA at Full Activation (Fire Season)
- Governor declared a State of Emergency
- Activated ESFs 1, 2, 4, 5, 6, 7, 8, 11, 12, 13, 14, 15, 20

FEMA / Federal Response:

- FMAGs approved Aug 19
- Region X to elevate to Level III Enhanced Watch this morning
- FEMA LNO is deployed to State EOC



FEMA

Wildfires – Hawaii

Maui



Current Situation: FEMA and federal partners continue to support the state of Hawaii in response and recovery efforts from Hawaii Wildfires. Mission priorities remain focused on Search & Rescue, fire containment, and damage assessments in the impacted area (Maui County). All congregate sheltering missions are expected to be complete today as survivors finalize transitions to permanent housing solutions and Transitional Assistance.

Lifelines Impacts: (SLB #11 as of 2:27 a.m. ET Aug 20)

Safety and Security:

- Phased re-openings for most public schools
- USAR continue to conduct secondary low searches and secondary high searches
- USCG granted safety zone exception to Maui FD; Dive Team to begin underwater search and recovery of remains from Lahaina Harbor
- 2 Burned Area Emergency Response (BAER) team members will begin work today, one additional team member will assist on Monday

Food, Hydration, and Shelter:

- Congregate Shelters Open: **3 (-2)**; total midnight count: **16 (-24)**
 - ARC-managed: **2 (-1)** sites; midnight count: **9 (-16)**
 - Independent-managed: **1 (-1)** sites; midnight count: **7 (-8)**
- Non-Congregate Shelters Open: **8 (+2)**; midnight count: **1,821 (+595)**
- 34 (-1)** feeding locations with **124,550 (+102,580)** meals served

Health and Medical:

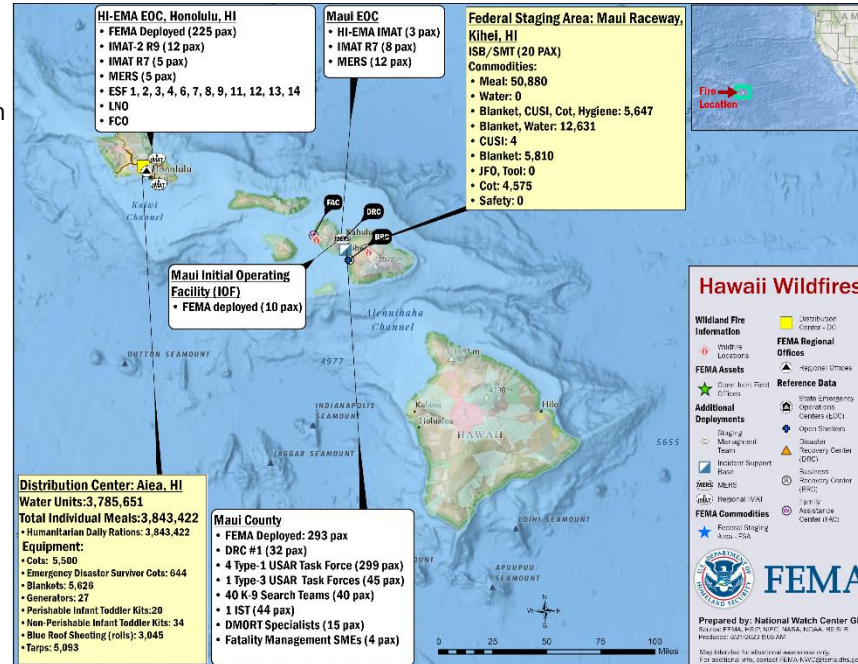
- 114 confirmed fatalities; 67 fire-related injuries
- BH team is fully operational providing force health protection and behavioral health services (SOC IM SLB, 8:00 p.m. ET, Aug 20)

Water Systems:

- USACE delivered a total of 7 back-up generators (3 to Dept. Water Supply and 4 to water systems booster pump sites)

Energy:

- 1,905 customers remain without power in Maui
- Estimated time of power restoration: West Maui (areas that can be accessed) – Aug 20-26; central Maui (Alaluana above Olinda) – Aug 27



Communications: (Maui County)

- All cell towers have been restored
- 2,194 landline/cable subscribers have been restored; 14.5k subscribers out of service in the disaster area (includes loss of equipment and internet service)
- 15 Portable cellular units in service in Maui
- Permanent fiber services repaired and restored between Kahana and Kapalua Airport area; cellular and internet services back online for residents in the area

Transportation:

- 3 Temporary Flight Restrictions (TFR) in effect for Maui County
- Access limited for Honoapi'ilani and Lahaina Bypass Roads: open to the public during the day and evening; limited to residents and first responders overnight
- USCG Safety Zone in effect: [access authorized on a case-by-case basis](#)

State / Local Response:

- HI state EOC at Full Activation / Gov declared a SOE

FEMA / Federal Response:

- FEMA-4724-DR-HI approved Aug 10
- Region IX RWC continues to monitor
 - IMAT-2 with ESFs 1 through 15 and DCE deployed to HI
 - 1 LNO deployed to HI EOC (Oahu), 1 LNO in Maui
 - 1 FCO in Maui, 1 in Oahu
- HQ:
 - Region VII IMAT deployed to HI
 - US&R: Blue IST, 4 NIMS Type 1 task forces, 1 NIMS Type 3 task force, 2 Mission Ready Packages - Canine Search, and 35 single resource Canine Search Teams
 - MERS personnel deployed to HI
 - Staging Management Team (SMT) and Incident Support Base (ISB) team deployed to Maui
 - Disaster Recovery Center (DRC) open
 - NWC continues to monitor in coordination with Region IX; the next update will be in the 5:00 p.m. ET FEMA National Situation Report

National Watch Center



FEMA

Wildfire Summary

Fire Name (Co., ST)	FMAG #	Acres Burned	Percent Contained	Evacuations	Structures (Homes / Other)			Fatalities / Injuries
					Threatened	Damaged	Destroyed	
Lost Horse Creek (Fairbanks North Star Borough, AK)	5473-FM-AK	9,317 (-188)	23%	M: Lifted	H: 0	H: 0	H: 0	0 / 2
				V: 0	O: 0	O: 0	O: 0	
River Road East (Sanders, MT)	5480-FM-MT	13,414 (+1,463)	0%	M: 0 (-416)	H: 215 (+15)	H: 0	H: 0	0 / 0
				V: 0	O: 50 (-15)	O: 0	O:	
Gray (Spokane, WA)	5479-FM-WA	10,014 (+508)	10% (+10)	M: 1,000	H: 850	H: 0	H: 185	1 / 0
				V: 0	O:	O: 0	O: 0	
Oregon (Spokane, WA)	5481-FM-WA	10,142 (+1,830)	10% (+10)	M: 4,000	H: 1,000	H: 12 (+12)	H: 80 (+10)	0 / 1 (+1)
				V: 0	O: 1,000 (+818)	O: 15 (+15)	O: 80 (+80)	

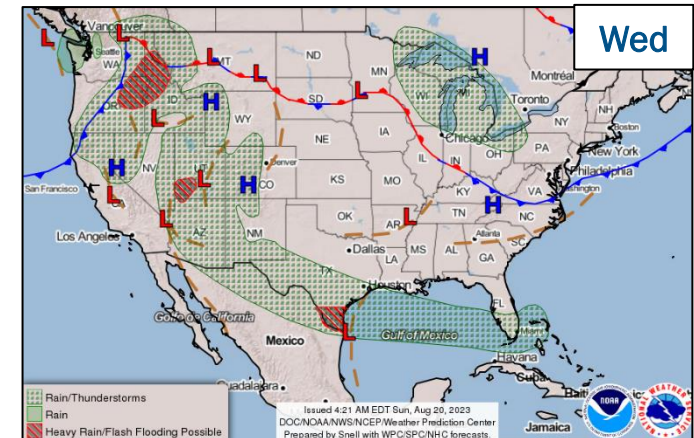
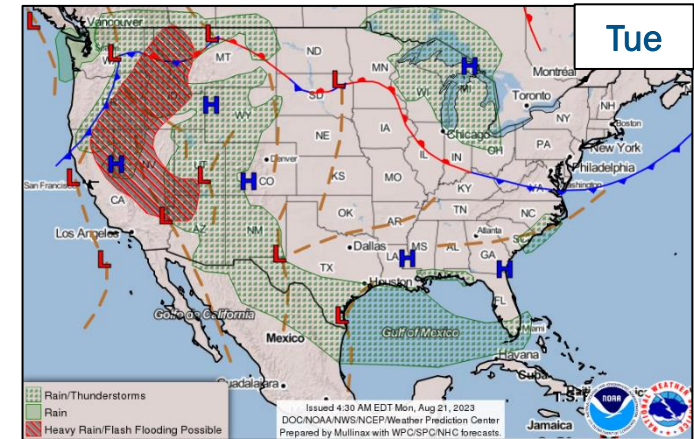
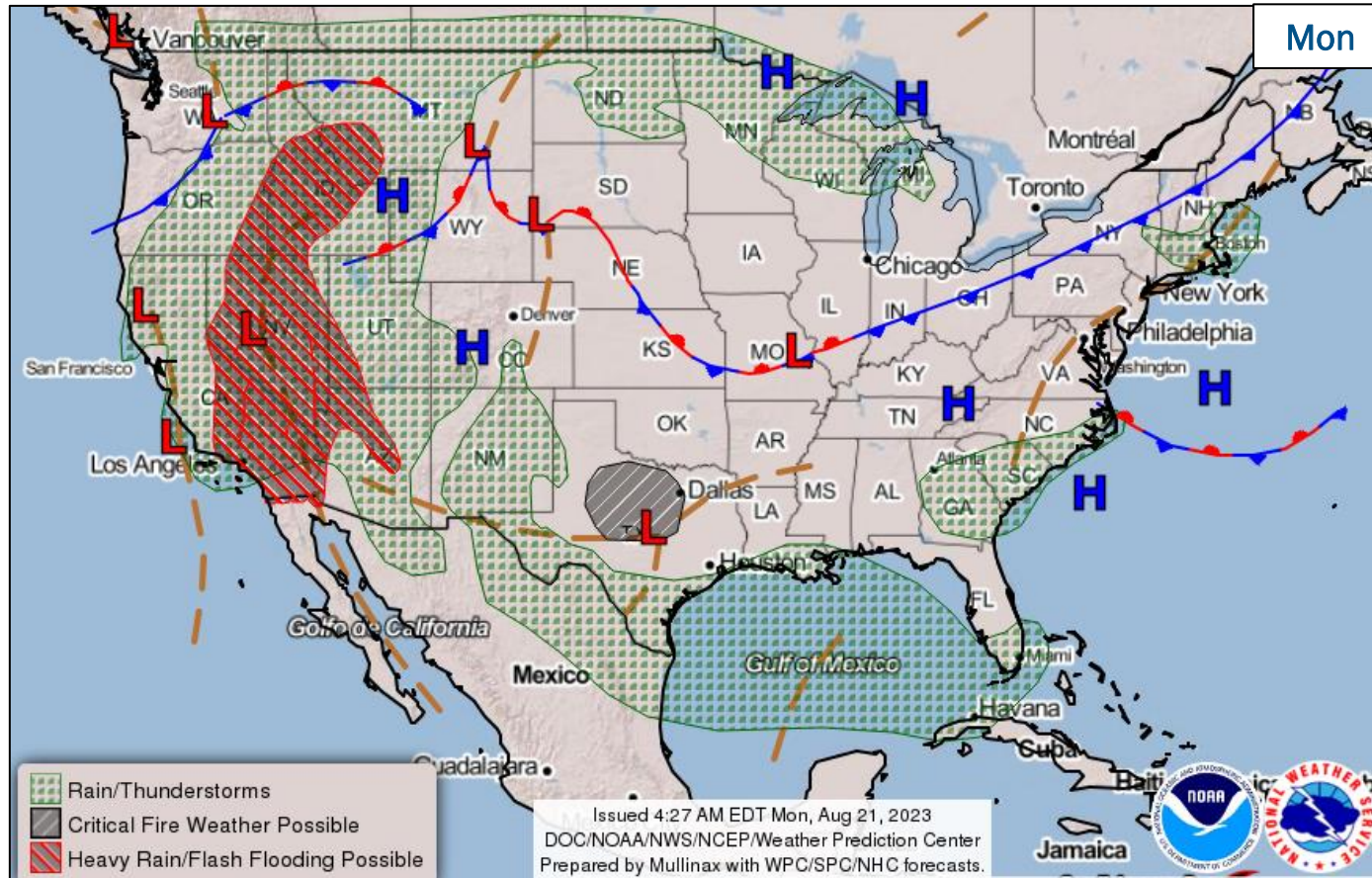
(Evacuations: M = Mandatory / V = Voluntary; Structures: H = Homes and Mixed Commercial/Residential / O = Non-residential Commercial/Other Minor Structures)



FEMA

National Watch Center

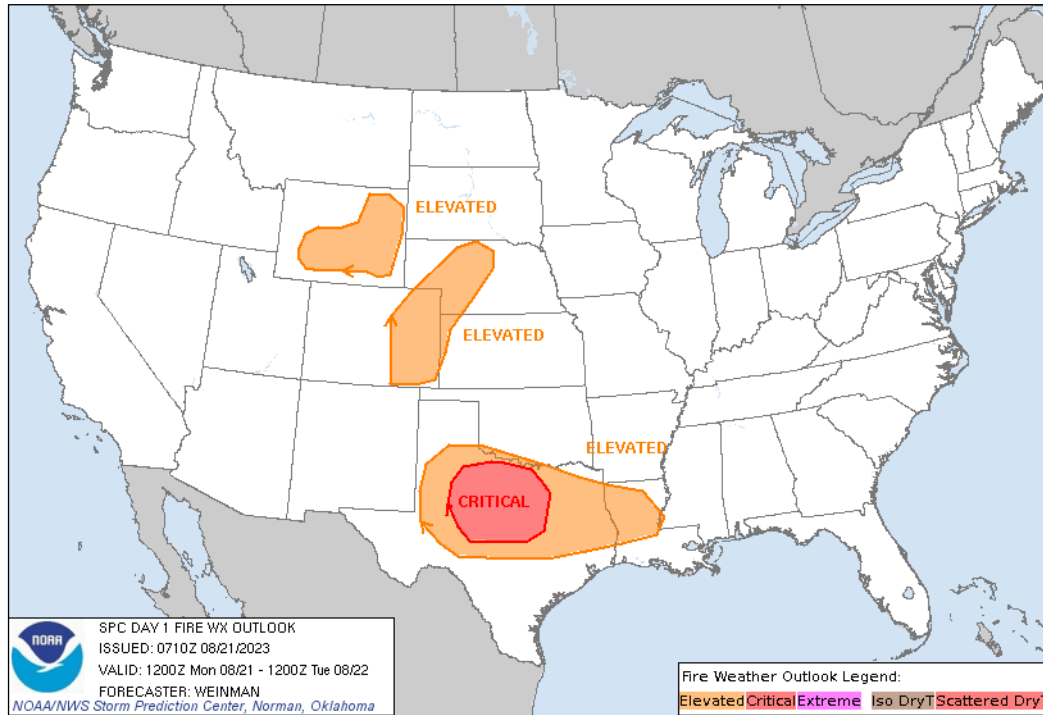
National Weather Forecast



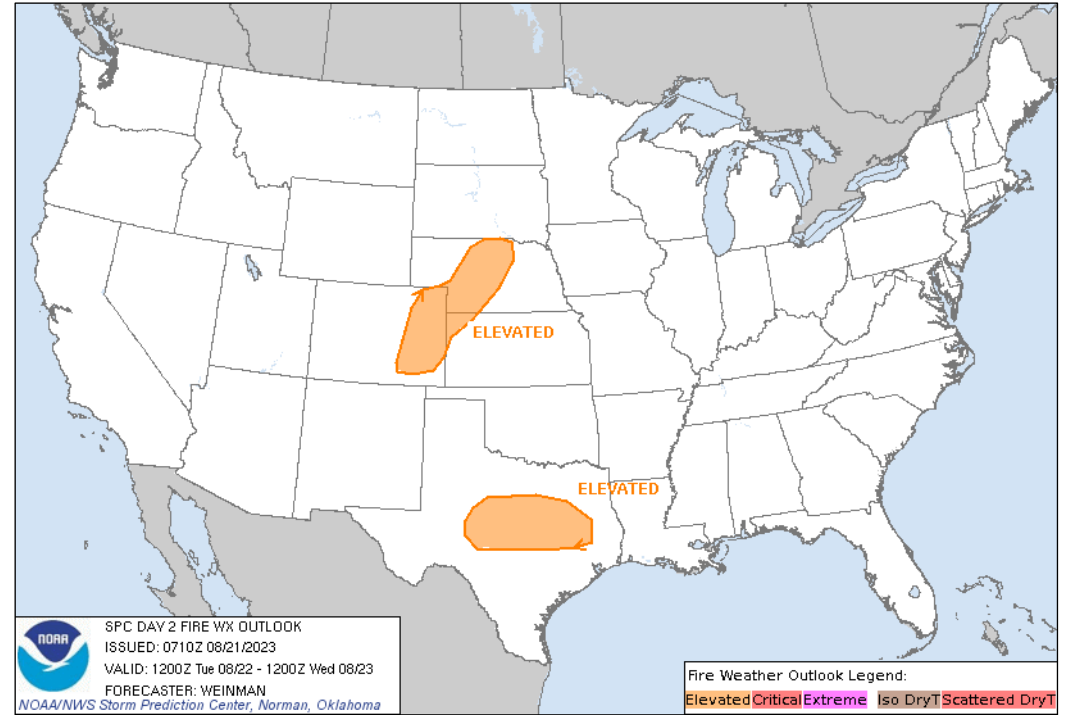
FEMA

National Watch Center

Fire Weather Outlook



Today



Tomorrow



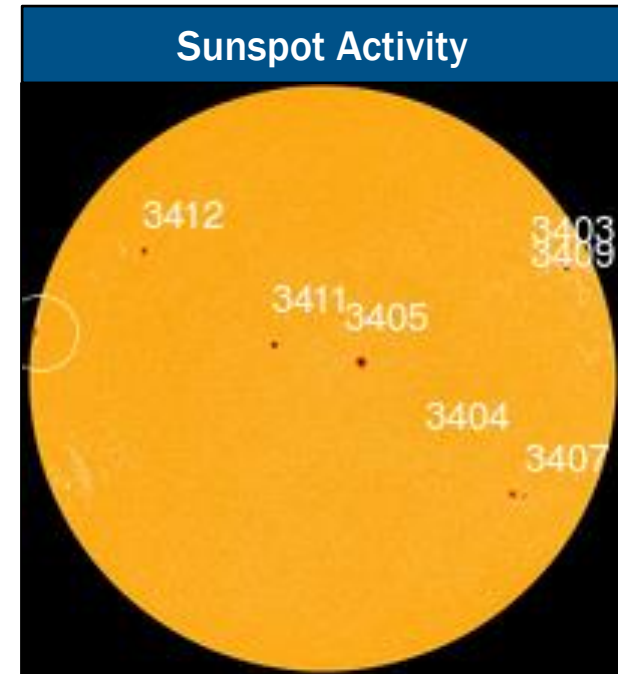
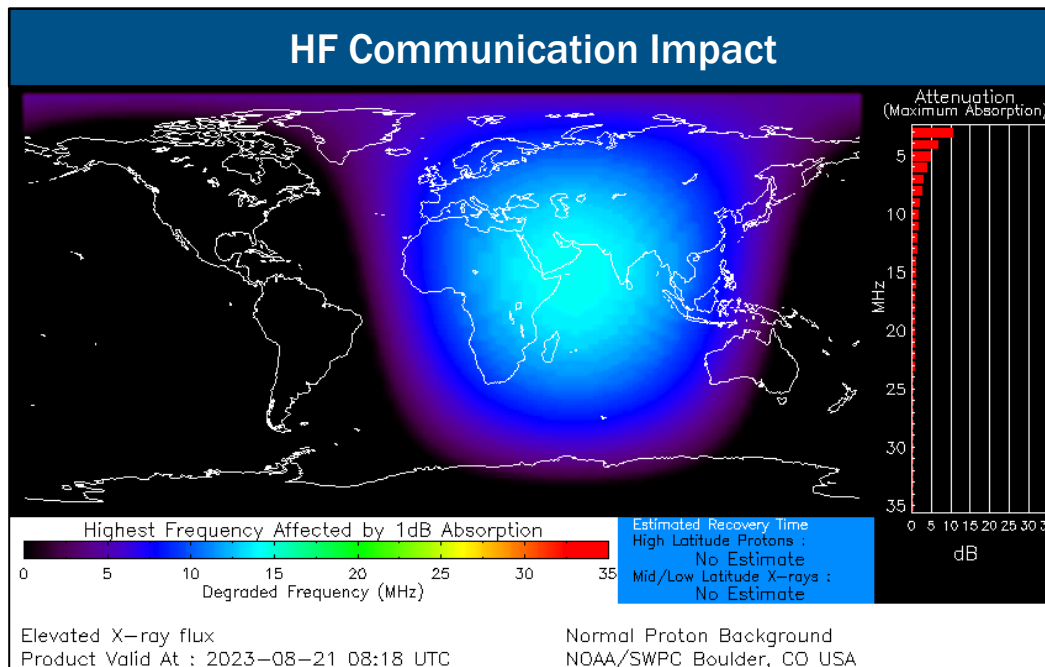
FEMA

National Watch Center

Space Weather Outlook

Minor	Space Weather Activity	Geomagnetic Storms	Solar Radiation	Radio Blackouts
Past 24 Hours	None	None	None	None
Next 24 Hours	None	None	None	None

For further information on NOAA Space Weather Scales refer to: <http://www.swpc.noaa.gov/noaa-scales-explanation>
 For further information on Sunspot Activity refer to: <https://www.swpc.noaa.gov/phenomena/sunspotssolar-cycle>



FEMA

National Watch Center

FEMA Common Operating Picture

16 + 8

Joint Field Offices
Virtual Joint Field Offices

Supporting

71 + 0

Major Disasters
Emergency Declarations

7

Direct Housing Missions

18

RSF-Supported Disasters

Monday
August 21, 2023
8:30 a.m. ET

FEMA HQ		
NWC	NRCC	
Monitoring	Activated	
FEMA REGIONS		
Watch	RRCC	
Monitoring	I	Rostered
Monitoring	II	Level III
Monitoring	III	Rostered
Monitoring	IV	Rostered
Monitoring	V	Rostered
Monitoring	VI	Rostered
Monitoring	VII	Rostered
Monitoring	VIII	Rostered
Monitoring	IX	Rostered
Enhanced	X	Enhanced

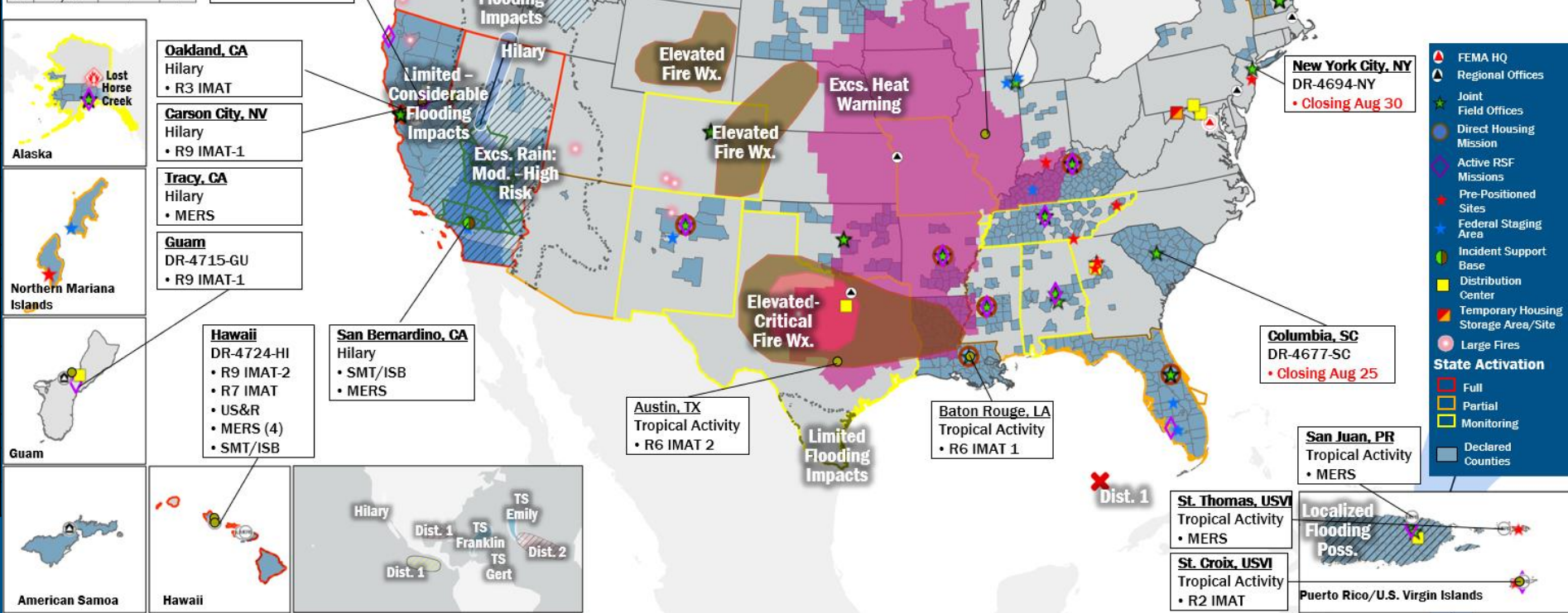
N-IMATs	
2-5 Teams Available	
Red	CA
White	
Blue	
Gold	
HS	Training

R-IMATs	
0-3 Teams Available	
I	VT
II	USVI
III	CA
IV-1	Personnel
IV-2	Personnel
V	IL
VI-1	LA
VI-2	TX
VII	HI
VIII	1
IX-1	GU/NV
IX-2	HI
X	WA

Notes:

RWC/RRCC:	State EOCs:
- NRCC: (day shift) Tropical Activity	- AL/MO/MS/TN/TX: Severe Weather
- Region II RWC: Tropical Activity	- FL: TC Ian
- Region II RRCC: Tropical Activity	- AK/NV/VT: Flooding
	- CO: Avian Influenza, Public Health Support, and Suncoar Refinery
R-IMAT:	- AZ/CO: SW Border Coordination
- R3 IMAT to CA 8/21 - Staged-R9 HQ	- AK/HI/NM/WA: Wildfires
- R6 IMAT-1 to LA 8/21	- CNMI: Typhoon Mawar
- R6 IMAT-1 to TX 8/21	- CA: Tropical Storm

REGIONAL BREAKDOWN			
	JFO/VJFO	DR	EM
I	3/0	8	0
II	1/2	5	0
III	0/0	0	0
IV	7/1	18	0
V	1/1	3	0
VI	3/1	6	0
VII	0/0	0	0
VIII	0/1	6	0
IX	0/1	16	0
X	1/1	9	0



Surge Capacity Force	
Rostered	Deployed
7,218	0

Fully Mission Capable (FMC)
Partially Mission Capable (PMC)
Not Mission Capable (NMC)
Deployed

IM Workforce

13,575 Assigned
4,254 (-16) Unavailable
6,508 (-40) Deployed

21% (+1) / 2,813 (+56) Available

IM Cadre Availability

16 Cadres ≤ 25% Availability

Civil Rights: 11% (15/141); Disability Integration: 5% (3/55); Disaster Survivor Assistance: 23% (267/1,171); External Affairs: 14% (68/499); Environmental Planning and Historic Preservation: 17% (135/809); Field Leadership: 10% (13/135); Hazard Mitigation: 17% (210/1,249); Human Resources: 14% (23/170); Interagency Recovery Coordination: 22% (64/294); Information Technology: 22% (140/642); Logistics: 15% (231/1,513); Operations: 12% (42/344); Public Assistance: 6% (141/2,173); Planning: 6% (30/463); Safety: 6% (5/80); Security: 9% (13/139)

MERS

≥ 66%

36 Assigned
0 Unavailable
7 (+2) Deployed

29 (-2) Available

US&R

≥ 66%

28 Assigned
1 Unavailable
5 Deployed

22 Available

FCO

≤ 1 Type I

48 Assigned
8 Unavailable
37 (23 (FCOR) Deployed

3 Available

Joint Preliminary Damage Assessments

Region	State / Location	Incident	IA	Number of Counties		Start - End
			PA	Requested	Complete	
I	CT	Flooding Jul 9-10	IA	0	0	N/A
			PA	1	0	8/9 - TBD
	NH	Flooding Jun 17 and continuing	IA	0	0	N/A
			PA	10	0	7/24 - TBD
	VT	Flooding Aug 3-8	IA	0	0	N/A
			PA	2	0	8/21 - TBD
III	PA	Flooding Jul 15-16	IA	2	2	8/2 - 8/10
			PA	2	0	8/2 - TBD
IV	TN	Severe Storms and Tornado Aug 7	IA	1	0	8/22 - TBD
			PA	11	0	8/22 - TBD
V	IL	Severe Storms and Flash Flooding Jun 29 - Jul 2	IA	1	1	7/24 - 7/28
			PA	14	0	7/24 - TBD



FEMA

Joint Preliminary Damage Assessments

Region	State / Location	Incident	IA	Number of Counties		Start - End
			PA	Requested	Complete	
VII	MO	Severe Storms and Flooding Jul 29 and continuing	IA	0	0	N/A
			PA	31	0	8/15 - TBD
	KS	Severe Storms and Flooding Jun 27 and continuing	IA	0	0	N/A
			PA	31	0	TBD
X	AK	Glacier Outburst Flooding Juneau Aug 4-6	IA	1	0	8/23 - TBD
			PA	1	0	8/23 - TBD



FEMA

Declaration Requests in Process – 13

State / Tribe / Territory – Incident Description	Type	IA	PA	HM	Requested
MI – Flooding	DR		X	X	Jun 15
OH – Train Derailment	DR	X	X	X	Jul 3
CO – Severe Storms, Tornadoes, and Flooding	DR		X	X	Jul 27
NH – Severe Storms, and Flooding	DR		X	X	Jul 28
PA – Severe Storms, Straight-line Winds, and Flooding	DR	X	X	X	Jul 31
AK – Flooding	DR	X	X	X	Aug 1
WY – Flooding	DR	X	X	X	Aug 1
IA – Flooding	DR		X	X	Aug 3
Burns Paiute Tribe – Severe Storms, Flooding, Landslides, and Mudslides	DR		X	X	Aug 10
UT – Flooding	DR		X	X	Aug 11
ME – Severe Storms and Flooding (Jun 26)	DR		X	X	Aug 16
ME – Severe Storms and Flooding (Jun 29)	DR		X	X	Aug 16
KY – Severe Storms, Flooding, Straight-line Winds, and tornadoes	DR	X			Aug 18



FEMA



FEMA

Helping people before, during, and after disasters.



Scan to subscribe to this briefing.