

FEMA National Watch Center

# Daily Operations Briefing

Wednesday, July 27, 2022

8:30 a.m. ET



**FEMA**

# National Current Ops / Monitoring

---

## New Significant Incidents / Ongoing Ops

- Sargassum Algae Bloom – USVI
- Flash Flooding – St. Louis, MO
- Oak Fire – CA

## Hazard Monitoring

- Heavy Rain and Flash Flooding – Southwest to Central Great Basin; Central Rockies; Central Plains to Ohio Valley
- Tropical Activity:
  - Eastern Pacific:
    - Tropical Storm Frank
    - Disturbance 1: High (70%)

## Disaster Declaration Activity

- Approval: Major Disaster Declaration – AK

## Event Monitoring

- No significant activity



**FEMA**

# Sargassum Algae Bloom – U.S. Virgin Islands

## Current Situation:

Seasonal sargassum algae blooms are impacting water treatment operations on St Croix, USVI with potential to also impact power production if water production needs are unmet. Currently there are no major power outages; and potable water production is expected to fluctuate due to sargassum removal operations. [Production of potable water at the East Richmond Water Desalination Plant returned to average production rate.](#)

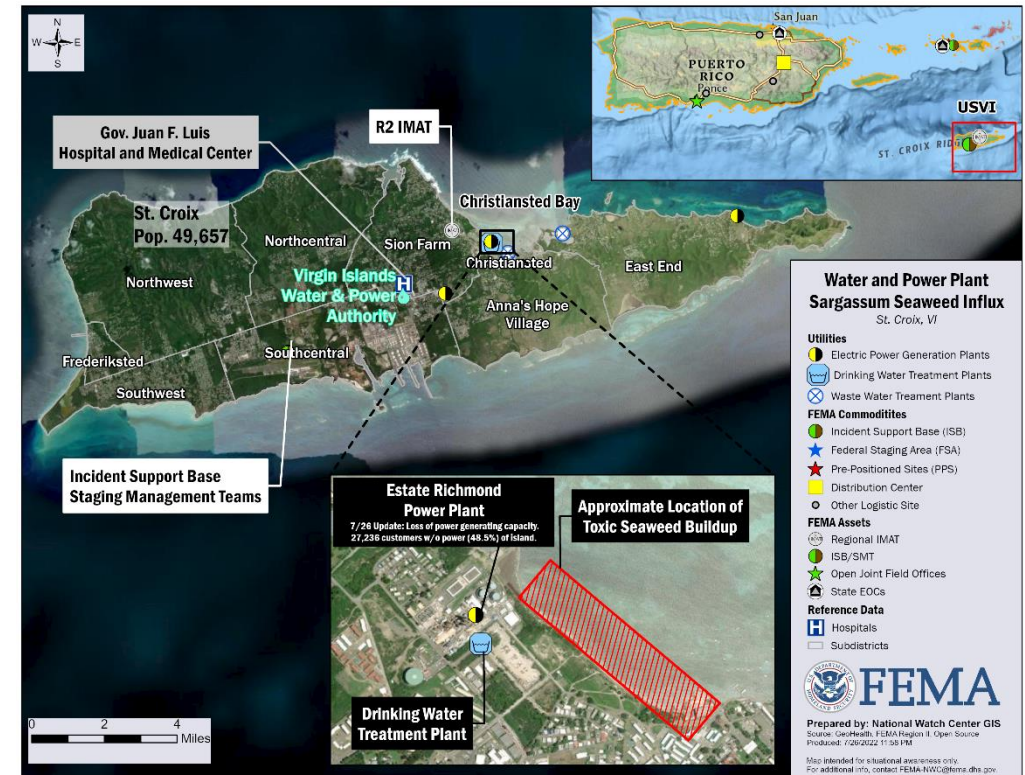
FEMA Region II is coordinating with territorial officials for short term needs and commodity support. FEMA HQ is coordinating with Region II for additional support.

## Territorial / Local Response:

- USVI EOC at Partial Activation (Sargassum bloom, COVID-19)
- Governor declared State of Emergency

## FEMA / Federal Response:

- Region II RRCC at Level III with ESF 3, 8, 10, 12, 14, and DCE (day shift only)
- FEMA-EM-3581-USVI Approved
- Region II IMAT deployed to USVI
- Civil Air Patrol requested to support aerial imagery of sargassum
- HQ ISB/SMT teams deploying to USVI to support a commodities mission
  - Requested resources are scheduled to arrive by barge today



FEMA

National Watch Center

# Flash Flooding – St. Louis, MO (Final)

## Current Situation:

Heavy rainfall affected much of the St. Louis metropolitan area and east-central Missouri during the early morning hours yesterday. An estimated 4-10 inches of rainfall has impacted the area. **Flood Warnings have expired. Response and Recovery operations have not exceeded state and local capabilities.**

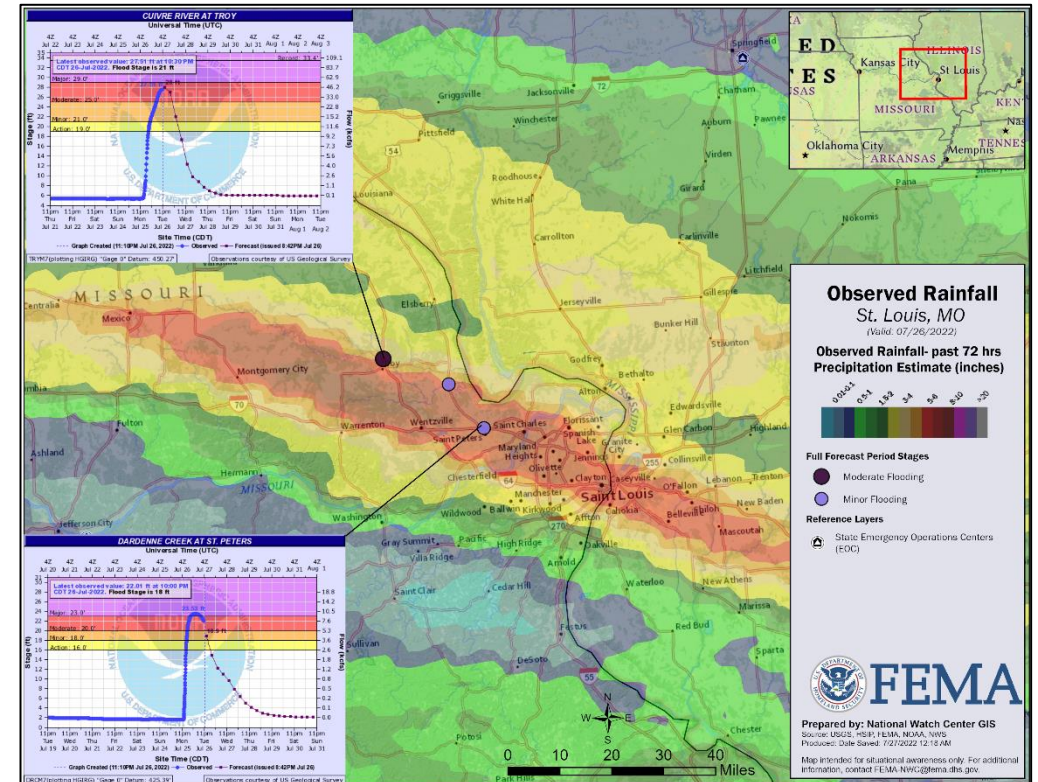
- No injuries / **1 fatality** reported
- Local/State resources have begun to demobilize
- No shelters open; American Red Cross in coordination with affected counties
- Minimal power outages
- Transportation routes have begun to re-open; no impact to emergency services

## State / Local Response:

- MO EOC is at Partial Activation (Flooding/Flash Flooding)
- MO has all resources to meet requirements

## FEMA / Federal Response:

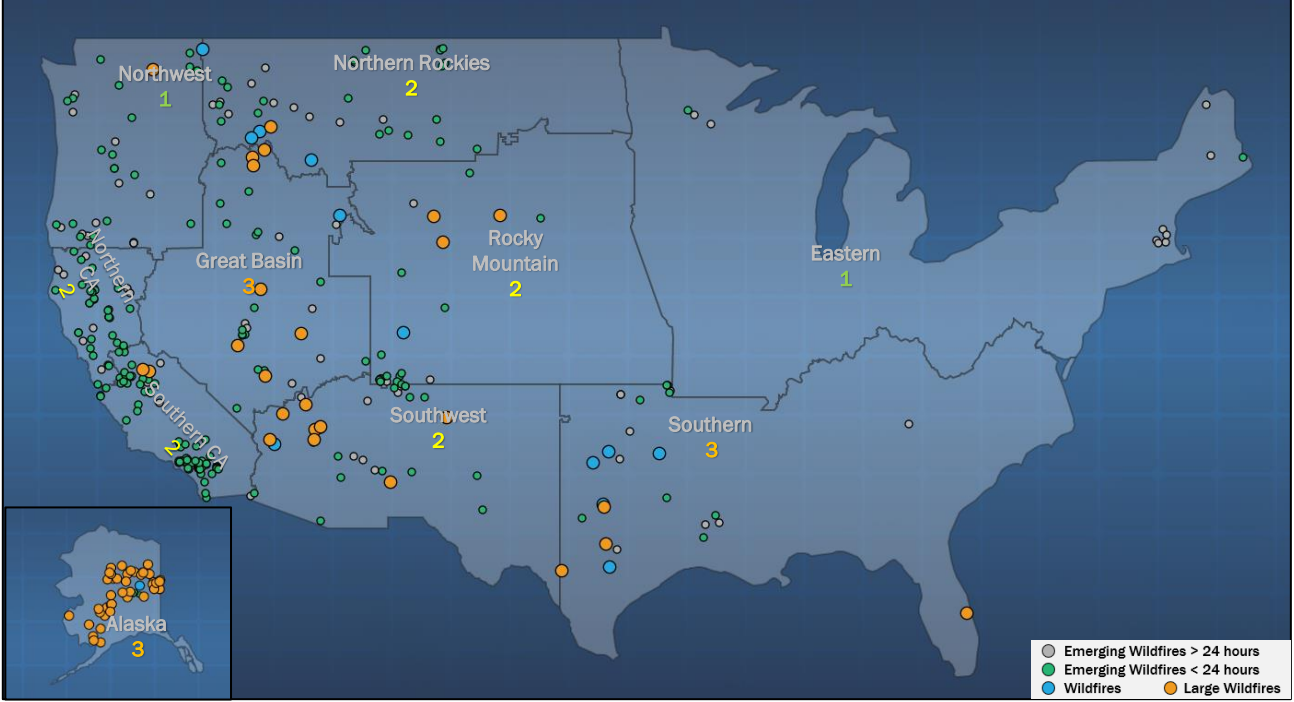
- Region VII is monitoring
- NWC will continue to monitor



FEMA

National Watch Center

# National Fire Activity *(as of Jul 27)*

National Preparedness Level		PL3
Initial Attack Activity (24-hour period)	Light (132 fires)	
New large fires:	4 (+1)	
Large fires contained:	3 (-1)	
Uncontained large fires:	14 (-10)	
Cumulative Acres Burned	2,135,796	
Total Responders (2022 Fire Season)	8,154 (+1,804)	
Type 1 IMTs deployed	4 of 16	
Type 2 IMTs deployed	6 of 33	
Preparedness Levels Legend		
PL 1	Minimal fire activity; many resources available	
PL 2	Large wildland fires burning throughout country; resources mobilized from other areas	
PL 3	Wildfire activity ongoing throughout 25% of county; National Interagency Coordination Center (NICC) sets priorities, allocates resources, and mobilizes assets at national level	
PL 4	High levels of fire activity and areas are competing for firefighting resources; 60% of the nations wildland firefighting resources committed	
PL 5	Extremely high levels of fire activity; 80% of nations firefighting resources committed	



# Oak Fire – California

Fire Name (Co., ST)	FMAG #	Acres Burned	Percent Contained	Evacuations	Structures (Homes / Other)			Fatalities / Injuries
					Threatened	Damaged	Destroyed	
Oak Fire (Mariposa, CA)	5445-FM-CA	18,532 (+1,291)	26% (+10)	M: 2,228 (-236)	H: 1,138 (-302)	H: 3 (+3)	H: 42 (+21)	0 / 0
				V: 0	O: 0	O: 1 (+1)	O:19 (+10)	

**Current Situation:** The fire began Jul 22 and is burning on federal, state and private land near Midpines, CA. Tribal lands belonging to the North Fork Rancheria of Mono Indians of California threatened.

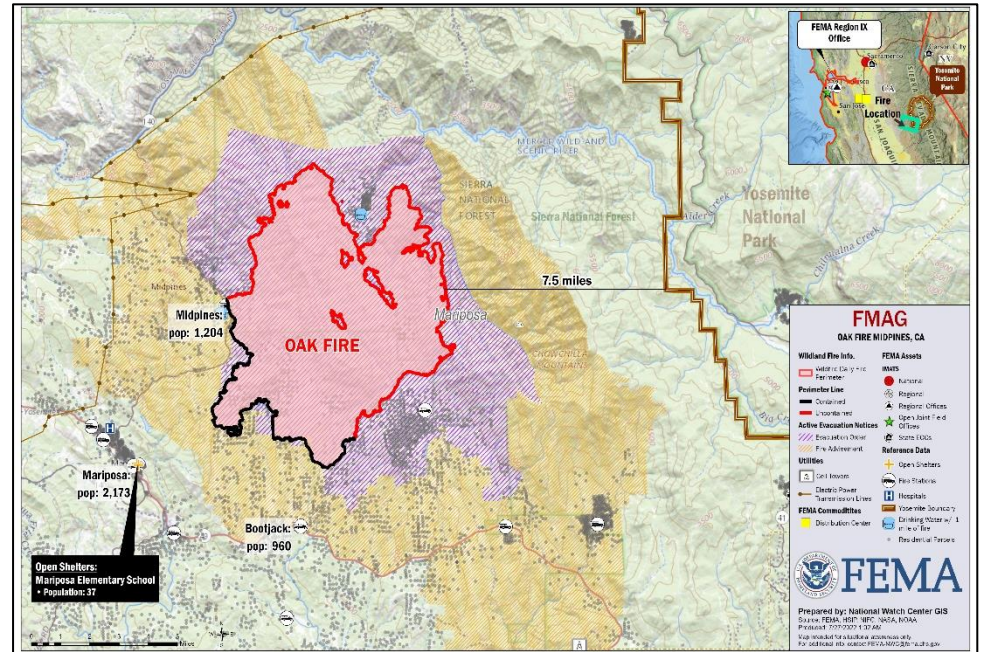
- Critical infrastructure threatened
  - PG&E local distribution lines and 1 HV transmission line
  - 1 cell tower (Verizon)
  - 4 fire stations (county, state, and federal)
  - Community water supply systems
  - Agricultural assets: grazing, vineyards, mining, private timberlands
  - Economic assets: wineries, tourism, Yosemite NPS gateway
  - Prehistoric and historic cultural resources/archaeological sites/heritage sites
- 1 shelter open with 37 (-9) occupants *(ARC Midnight Shelter Count as of 6:48 a.m. ET)*

### State Response:

- CA EOC at Full Activation (COVID-19); State of Emergency declared for Mariposa County
- Type 1 IMT assigned

FEMA / Federal Response:

- 5445-FM-CA approved July 23
- Region IX RWC and the NWC continue to monitor



# Wildfire Summary

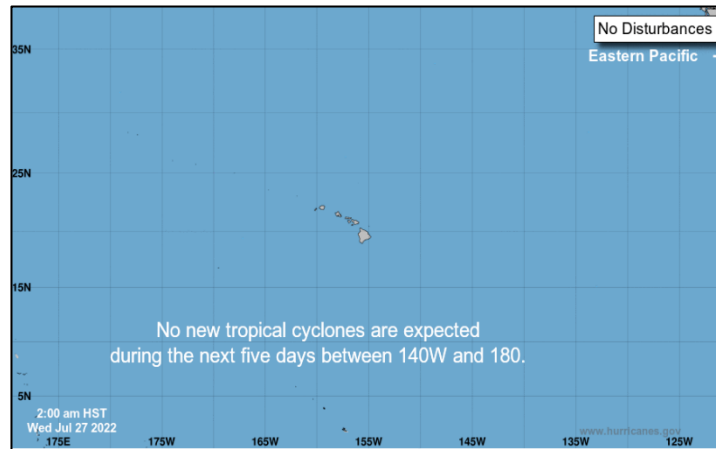
Fire Name (Co., ST)	FMAG #	Acres Burned	Percent Contained	Evacuations	Structures (Homes / Other)			Fatalities / Injuries
					Threatened	Damaged	Destroyed	
Chalk Mountain (Somervell/Hood, TX)	5444-FM-TX	6,746	40% (+20)	M: 0	H: 40	H: 5	H: 16	0 / 0
				V: 0	O: 0	O: 0	O: 0	
Oak (Mariposa, CA)	5445-FM-CA	18,532 (+1,291)	26% (+10)	M: 2,228 (-236)	H: 1,138 (-302)	H: 3 (+3)	H: 42 (+21)	0 / 0
				V: 0	O: 0	O: 1 (+1)	O: 19 (+10)	



FEMA

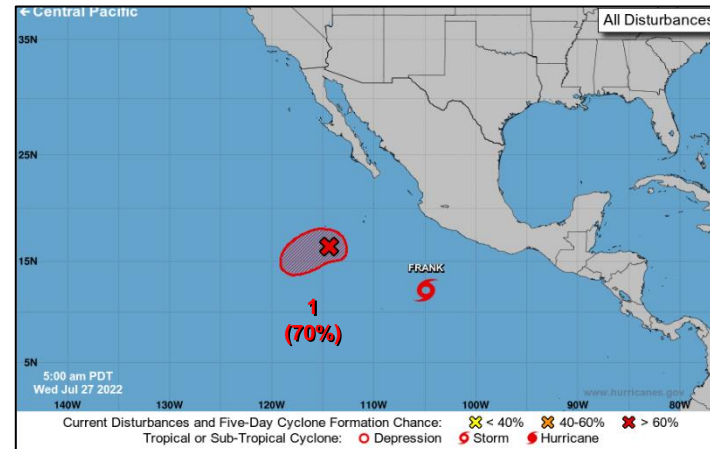
# Tropical Outlook – Five Day

## Central Pacific



- No tropical cyclones expected during the next 5 days

## Eastern Pacific



### Tropical Storm Frank (Advisory #5, as of 8:00 a.m. ET)

- 470 miles S of Manzanillo, Mexico
- Moving W at 9 mph
- Maximum sustained winds 40 mph
- Tropical-storm-force winds extend outward 70 miles

### Disturbance 1 (as of 8:00 a.m. ET)

- Several hundred miles SW of the southern tip of the Baja California peninsula
- Organization may lead to formation of a tropical depression later today
- Formation chance: 48-hour: High (70%); 5-day: High (70%)

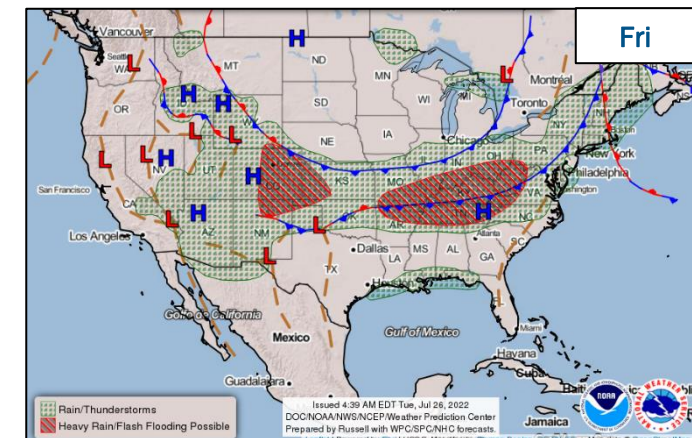
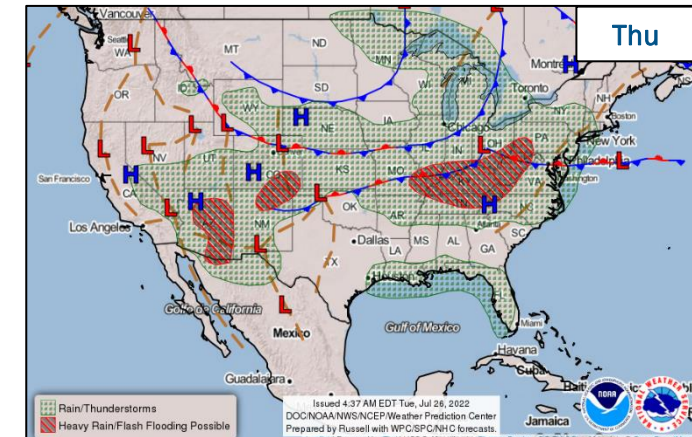
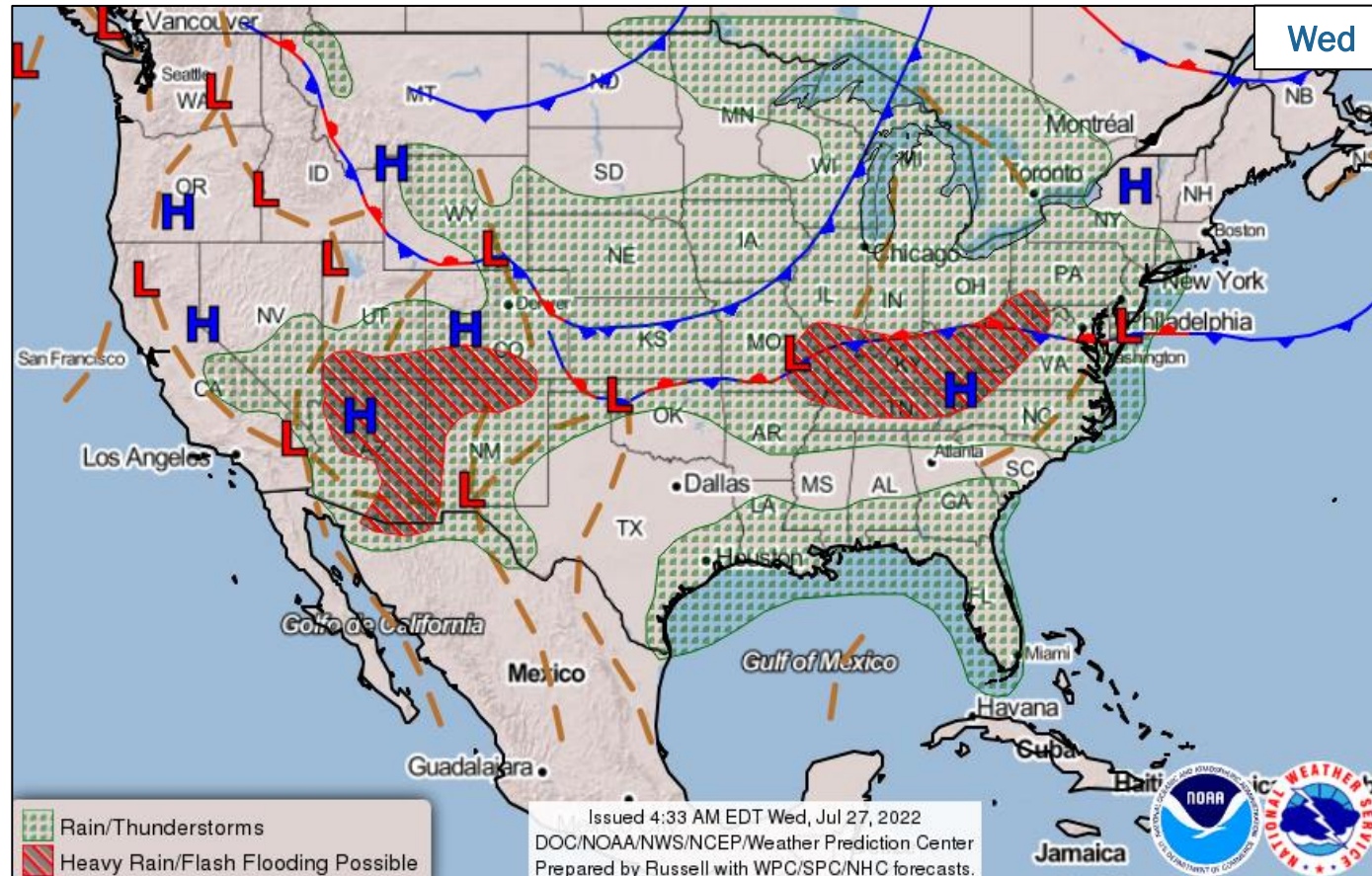
## Atlantic



- No tropical cyclones expected during the next 5 days



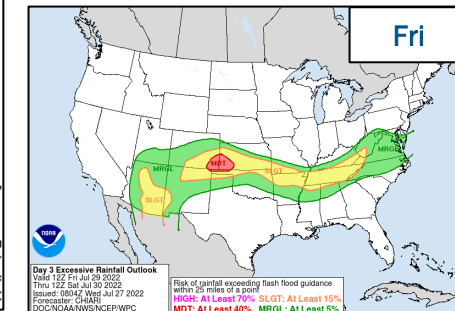
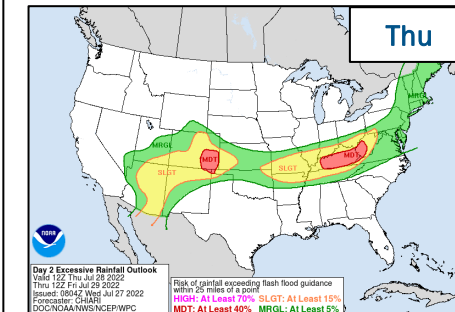
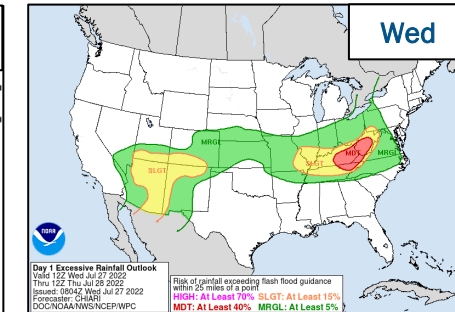
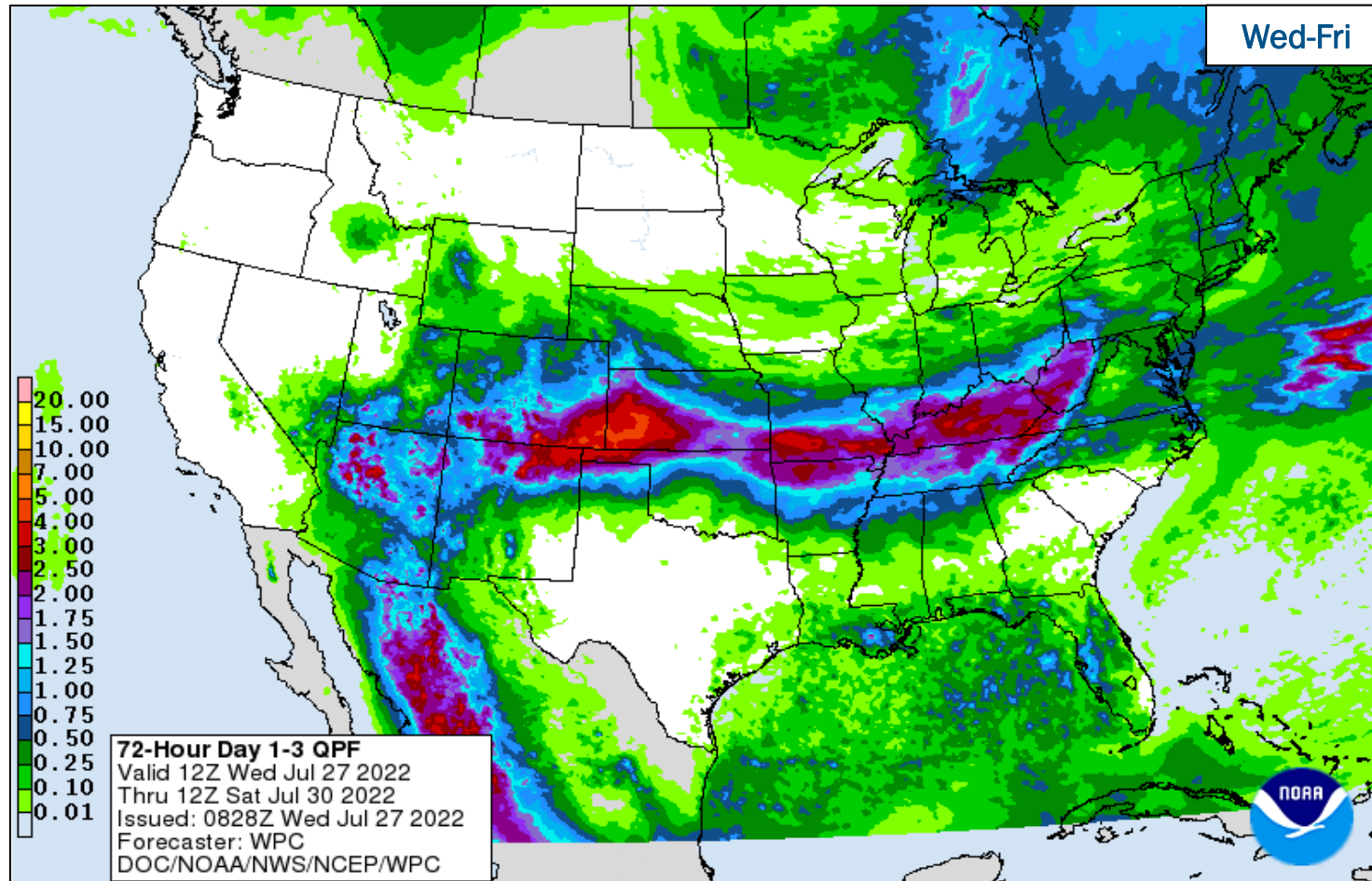
# National Weather Forecast



FEMA

National Watch Center

# Precipitation & Excessive Rainfall



FEMA

National Watch Center

# Joint Preliminary Damage Assessments

Region	State / Location	Incident	IA	Number of Counties		Start – End
			PA	Requested	Complete	
III	VA	Severe Storms and Flooding Jul 13	IA	1	0	7/27 – TBD
			PA	1	0	7/27 – TBD
V	OH	Severe Storms and Flooding Jun 13-17	IA	0	0	N/A
			PA	18	0	7/25 – TBD
VI	MCN (Muscogee Creek Nation)	Tornadoes, Severe Storms, and Flooding May 2-5	IA	1	1	5/16 – 5/24
			PA	1	0	5/16 – TBD
IX	AS	Historically Large Swell Jul 14-15	IA	0	0	N/A
			PA	1	0	7/25 – TBD



**FEMA**



# Declaration Approval – Alaska

**Declaration:** Major Disaster Declaration – FEMA-4661-DR-AK

**Date Requested:** Jun 30

**Date Approved:** Jul 26

**Incident:** Landslide

**Incident Period:** May 7

**Provides:**

- **PA Only:** 1 borough
- **Hazard Mitigation:** Statewide

**FCO:** Yolanda J. Jackson



■ PA



**FEMA**

National Watch Center



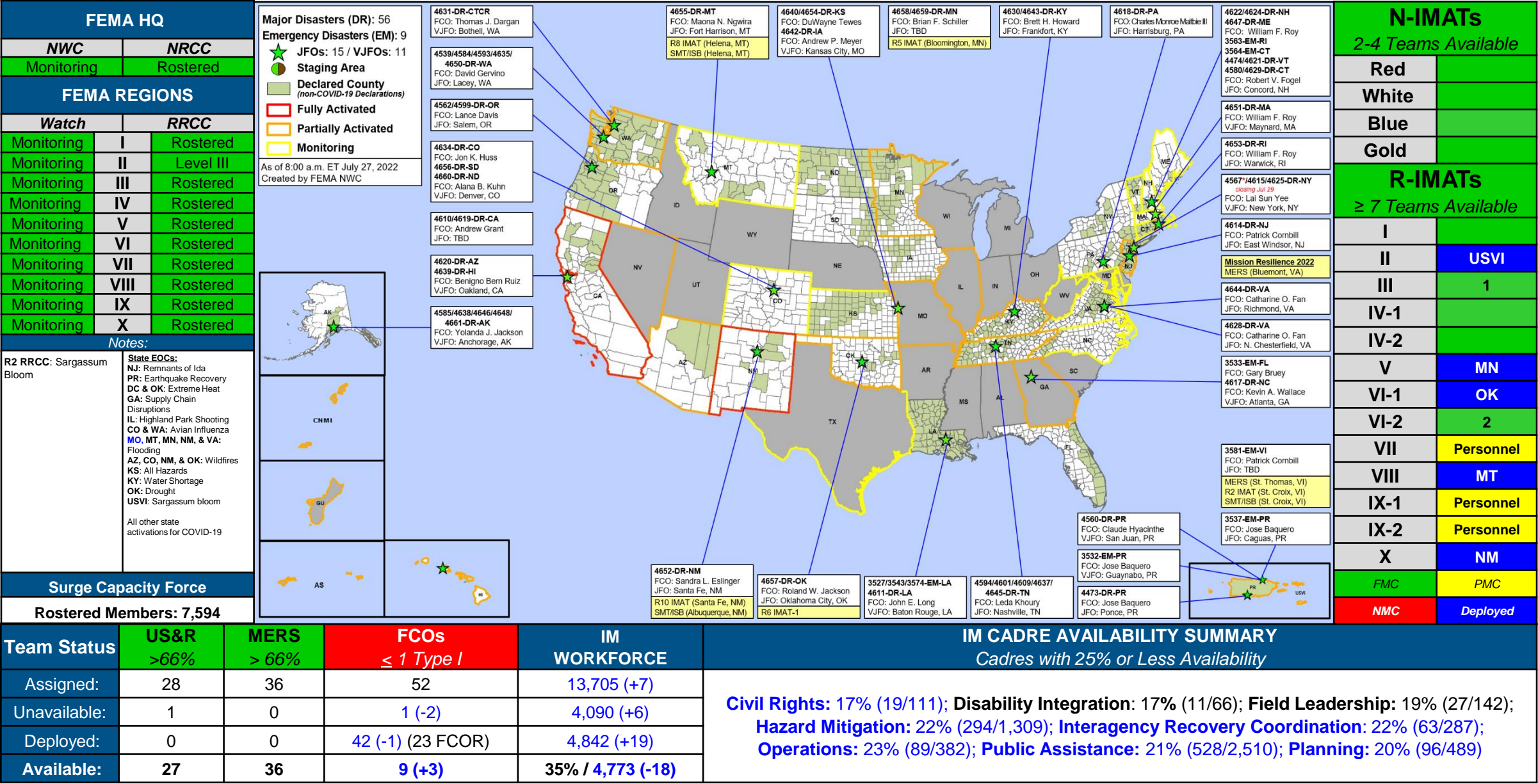
# Declaration Requests in Process – 5

State / Tribe / Territory – Incident Description	Type	IA	PA	HM	Requested
AK – Landslides – <a href="#">Approved</a>	DR		X	X	Jun 30
NE – Severe Storms, Straight-line Winds, and Tornadoes	DR		X	X	Jul 6
WV – Severe Storms and Flooding (Appeal)	DR	X		X	Jul 11
AK – Flooding	DR		X	X	Jul 13
SD – Severe Storm, Straight-line Winds, Tornado, and Flooding	DR		X	X	Jul 14
MN – Severe Storms, Straight-line Winds, Tornadoes, and Flooding	DR		X	X	Jul 21



**FEMA**

# FEMA Common Operating Picture





# FEMA

Helping people before, during, and after disasters.



*Scan to subscribe to this briefing.*