

FEMA National Watch Center

Daily Operations Briefing

Monday, May 16, 2022

8:30 a.m. ET



FEMA

National Current Ops / Monitoring

New Significant Incidents / Ongoing Ops

- Wildfires
- Southwest Border Coordination Support – Washington, DC
- COVID-19

Hazard Monitoring

- Severe Weather – Mid-Atlantic to the Northeast
- Fire Weather – Central Rockies and Central / Southern Plains

Disaster Declaration Activity

- No new declaration activity

Event Monitoring

- No significant events



FEMA

Hermit's Peak Fire – New Mexico

Fire Name (Co., ST)	FMAG #	Acres Burned	Percent Contained	Evacuations	Structures (Homes / Other)			Fatalities / Injuries
					Threatened	Damaged	Destroyed	
Hermit's Peak (San Miguel, NM)	5438-FM-NM	288,968 (+9,100)	27%	M: 26,112 (+4,042)	H: 22,070	H: 13	H: 329 (+11)	0 / 38 (+1)
				V: 0	O: 0	O: 23 (+5)	O: 252 (+16)	

Current Situation: Evacuation orders were lifted for East Cinder, Mills Plaza, and West Las Vegas in San Miguel County; Gallinas Corridor began repopulation on May 12. Long term evacuations and closures of critical travel corridors including highways 518, 65, 94, 121, 434, and I-25 are possible under predicted conditions and modeled fire behavior. Air quality alerts exist throughout parts of NM. Anticipated fire containment date is July 31. (FEMA Region VI Incident Status Summary ICS 209A as of 5:18 p.m. ET, May 14)

Lifeline Impacts:

Safety and Security:

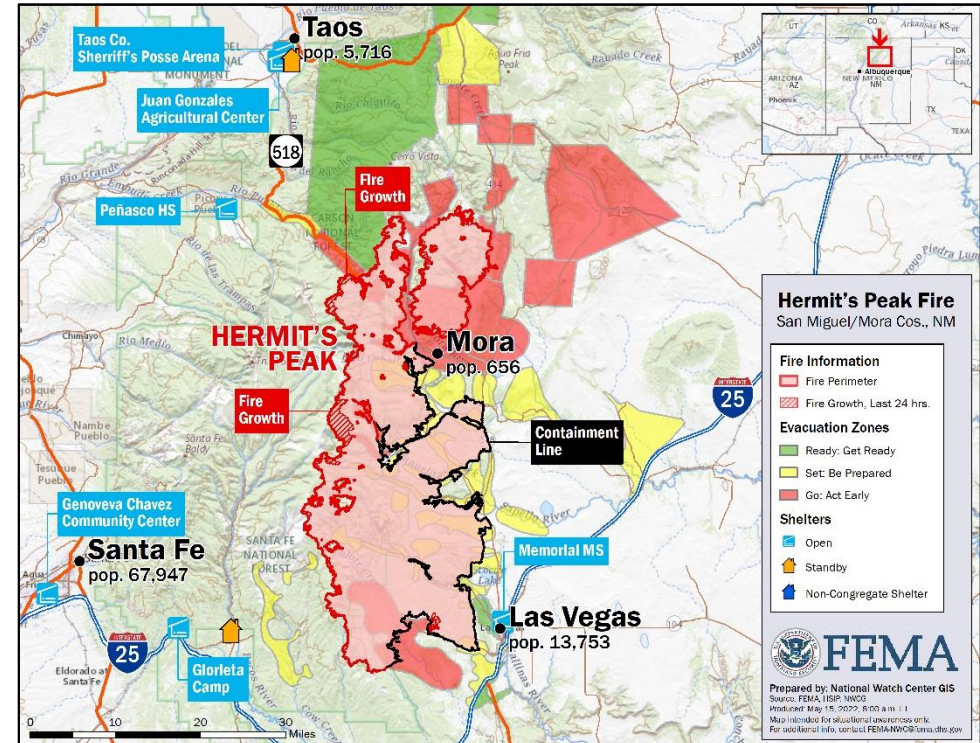
- Security guard services contracted for DRCs in Ruidoso, Las Vegas, and Glorieta

Food, Water, and Shelter:

- 7 shelters open with 626 occupants (ARC Morning Shelter Report as of 6:51 a.m. ET May 16)

Health and Medical:

- The Behavioral Health Institute in Las Vegas evacuated patients; re-entry began May 13



FEMA

Cerro Pelado Fire – New Mexico

Fire Name (Co., ST)	FMAG #	Acres Burned	Percent Contained	Evacuations	Structures (Homes / Other)			Fatalities / Injuries
					Threatened	Damaged	Destroyed	
Cerro Pelado (Sandoval, NM)	Not requested	45,602 (+11)	40%	M: 733	H: 34	H: 0	H: 4	0 / 1
				V:0	O: 0	O: 0	O: 6	

Current Situation: The fire continues to burn near Los Alamos National Laboratory (LANL). LANL continues aggressive fire mitigation work between LANL property and the northeast section of the fire. The fire has burned 849 acres on Pueblo de Cochiti land and 3,235 (+6) acres of Pueblo of Jemez land and is now 17-20 miles from the Pueblo proper. The fire entered tribal land of Santo Domingo Pueblo on May 10. **With more favorable conditions expected today, firefighters will continue looking for opportunities to engage the fire directly.** Estimated containment date is May 21.

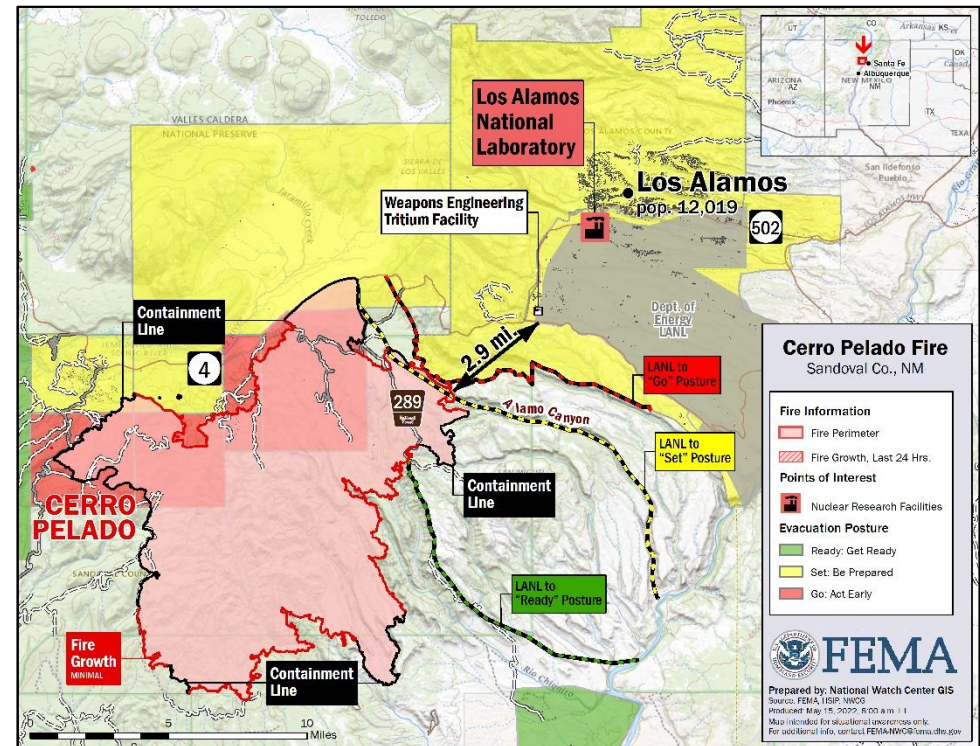
Lifeline Impacts (FEMA Region VI Incident Status Summary ICS 209A as of 5:18 p.m. ET, May 14)

Safety and Security:

- Fire restrictions at Stage 3: DOE and county-maintained trails are closed; campfires and grilling are prohibited; no use of firearms; no use of unpaved recreational areas

Hazardous Materials:

- The probability of nuclear or radiological incident due to the fire remains low



FEMA

Wildfire Summary

Fire Name (Co., ST)	FMAG #	Acres Burned	Percent Contained	Evacuations	Structures (Homes / Other)			Fatalities / Injuries
					Threatened	Damaged	Destroyed	
Hermit's Peak (San Miguel, NM)	5438-FM-NM	288,968 (+9100)	27%	M: 26,112 (+4,042)	H: 22,070	H: 13	H: 329 (+11)	0 / 38 (+1)
				V: 0	O: 0	O: 23 (+5)	O: 252 (+16)	
Cerro Pelado (Sandoval, NM)	Not requested	45,602 (+11)	40%	M: 733	H: 34	H: 0	H: 4	0 / 1
				V: 0	O: 0	O: 0	O: 6	
Coastal (Orange, CA) - FINAL	5439-FM-CA	200	80%	M: Lifted	H: UNK	H: 11	H: 20	0 / 0
				V: 0	O: 0	O: 0	O: 0	

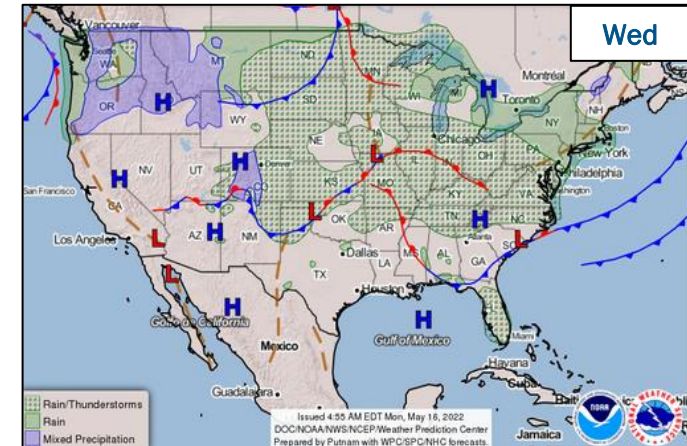
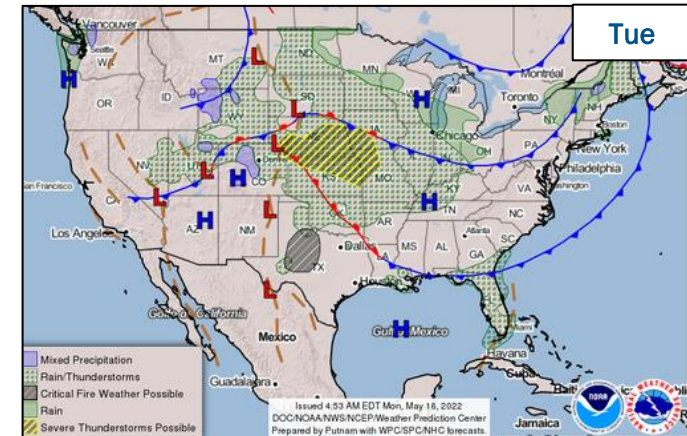
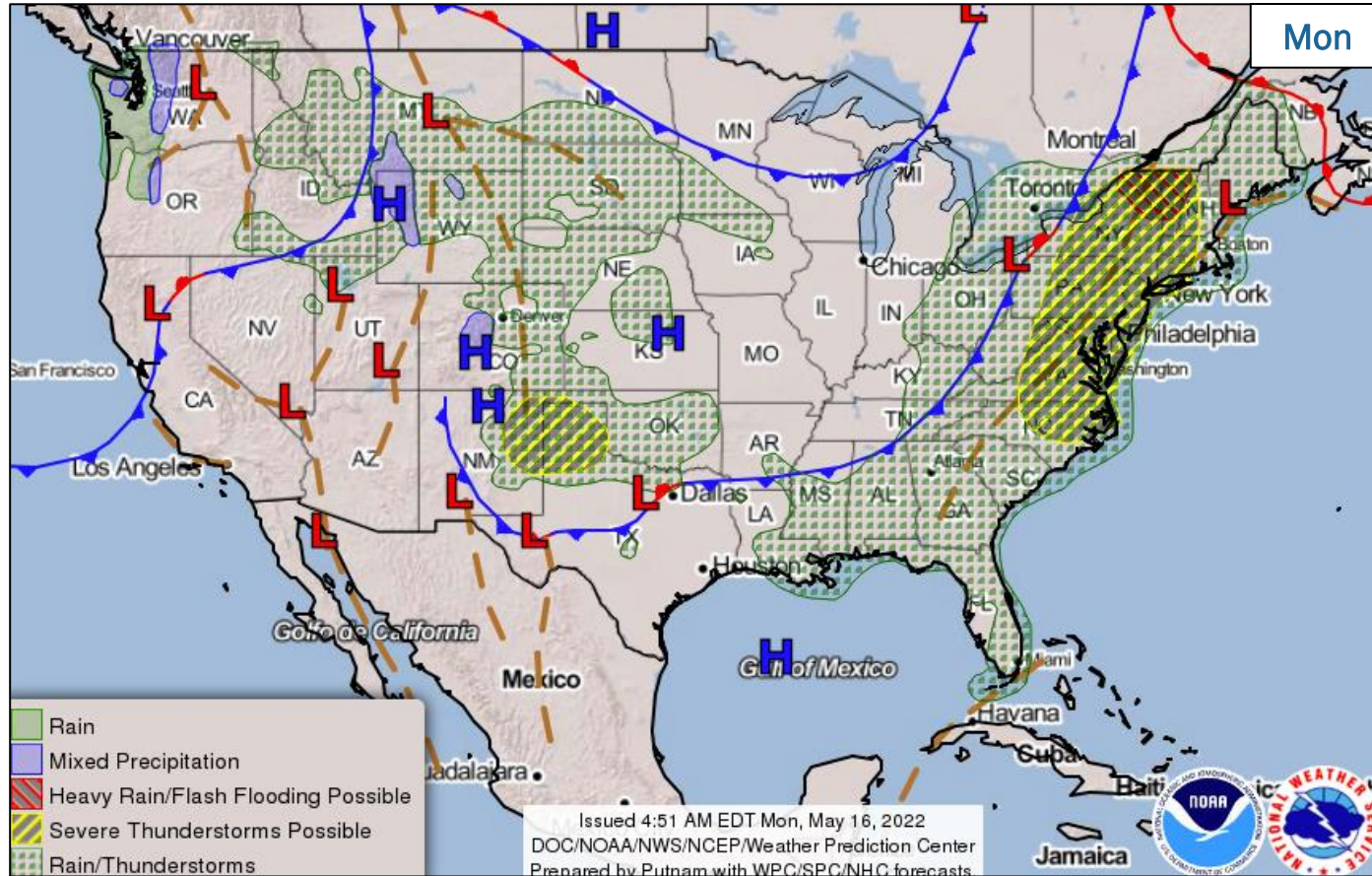
(Evacuations: M = Mandatory / V = Voluntary; Structures: H = Homes and Mixed Commercial/Residential / O = Non-residential Commercial/Other Minor Structures)



FEMA

National Watch Center

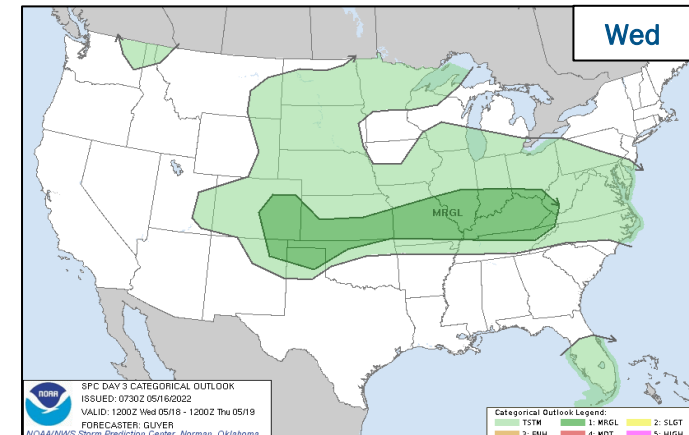
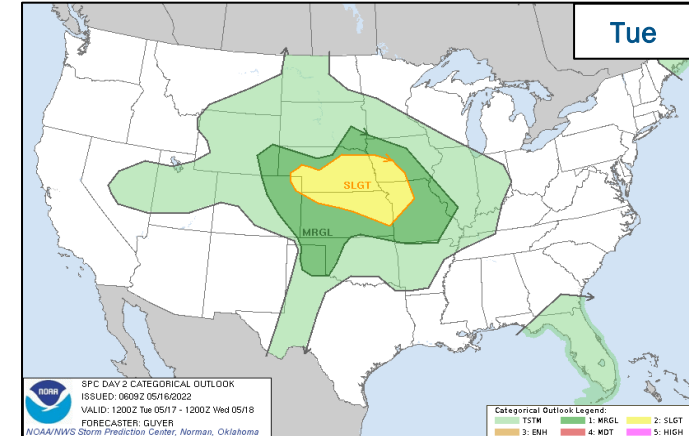
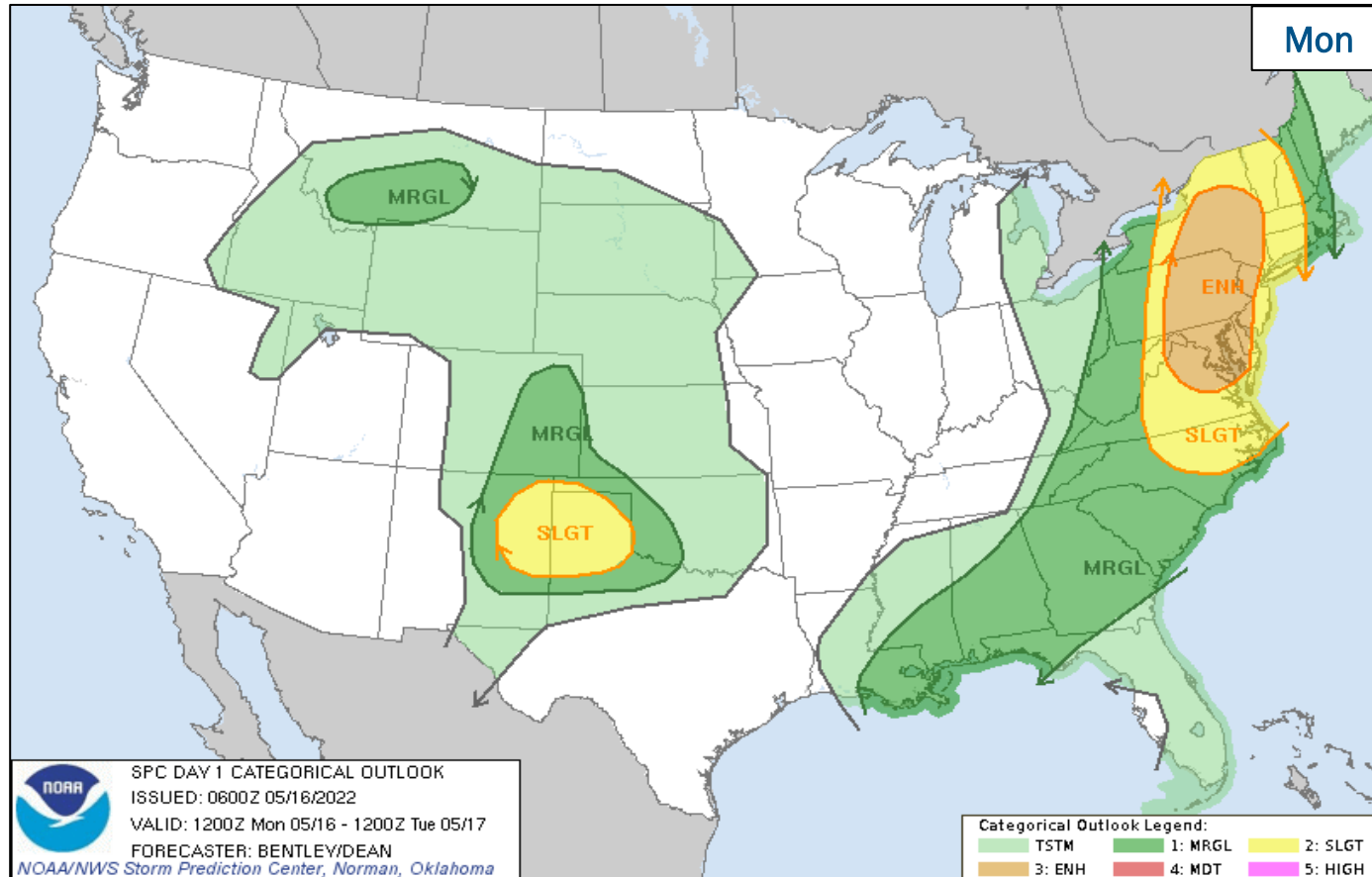
National Weather Forecast



FEMA

National Watch Center

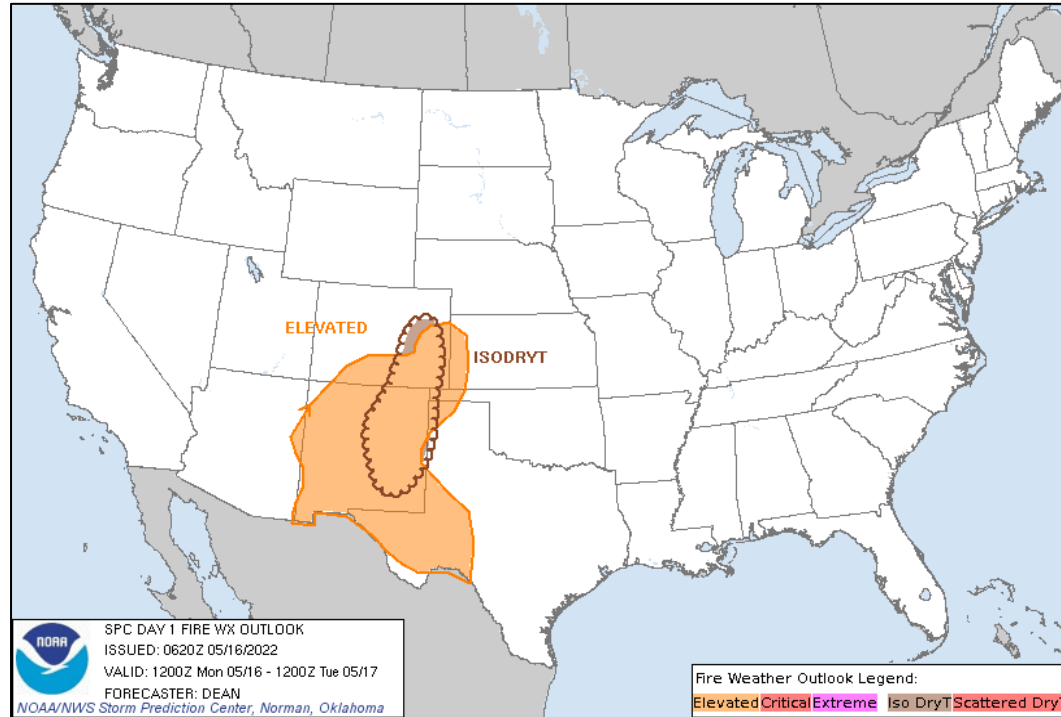
Severe Weather Outlook



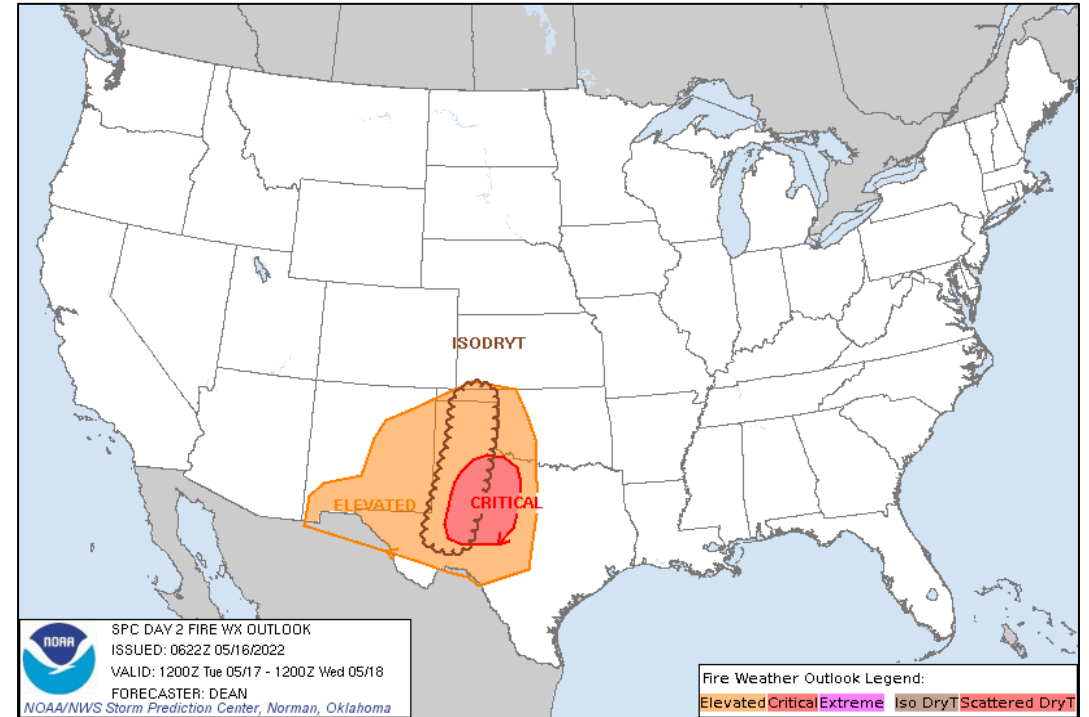
FEMA

National Watch Center

Fire Weather Outlook



Today



Tomorrow



FEMA

National Watch Center

Joint Preliminary Damage Assessments

Region	State / Location	Incident	IA	Number of Counties		Start - End
			PA	Requested	Complete	
VI	MCN*	Severe Storm and Flooding May 4 and continuing	IA	1	0	5/6 - TBD
			PA	1	0	5/16 - TBD
	OK	Severe Storm and Flooding May 4 and continuing	IA	2	0	5/2 - TBD
			PA	0	0	

*MCN – Muscogee (Creek) Nation



FEMA

Declaration Requests in Process – 3

State / Tribe / Territory – Incident Description	Type	IA	PA	HM	Requested
MS – Severe Storm, Straight-line Winds, and Tornadoes	DR	X		X	Apr 28
MS – Severe Storm, Straight-line Winds, and Tornadoes	DR	X		X	Apr 29
KS – Winter Storms and Straight-line Winds	DR		X	X	May 3



FEMA

FEMA Common Operating Picture

FEMA HQ

NWC	NRCC
Monitoring	Level III

FEMA REGIONS

Watch	RRCC
Monitoring	I Rostered
Monitoring	II Rostered
Monitoring	III Rostered
Monitoring	IV Rostered
Monitoring	V Rostered
Monitoring	VI Level III
Monitoring	VII Rostered
Monitoring	VIII Rostered
Monitoring	IX Rostered
Monitoring	X Rostered

Notes:

NRCC: COVID-19

R6 RRCC: Wildfire Activity (Day shift only)

STATE EOCs:

NJ: Remnants of Ida
PR: Earthquake Recovery
CO, DE, IA, MT, & WA: Avian Influenza
GA: Supply Chain Disruptions
MO, SD, IA, & KS: Severe Weather
AZ, KS, NE, & NM: Wildfire Activity
MN & AK: Flooding
MT: Winter Storms

*All other state activations for COVID-19

Surge Capacity Force

Rostered Members: 7,764

Major Disasters (DR): 59
Emergency Disasters (EM): 9

★ JFOs: 13 / VJFOs: 10

● Staging Area

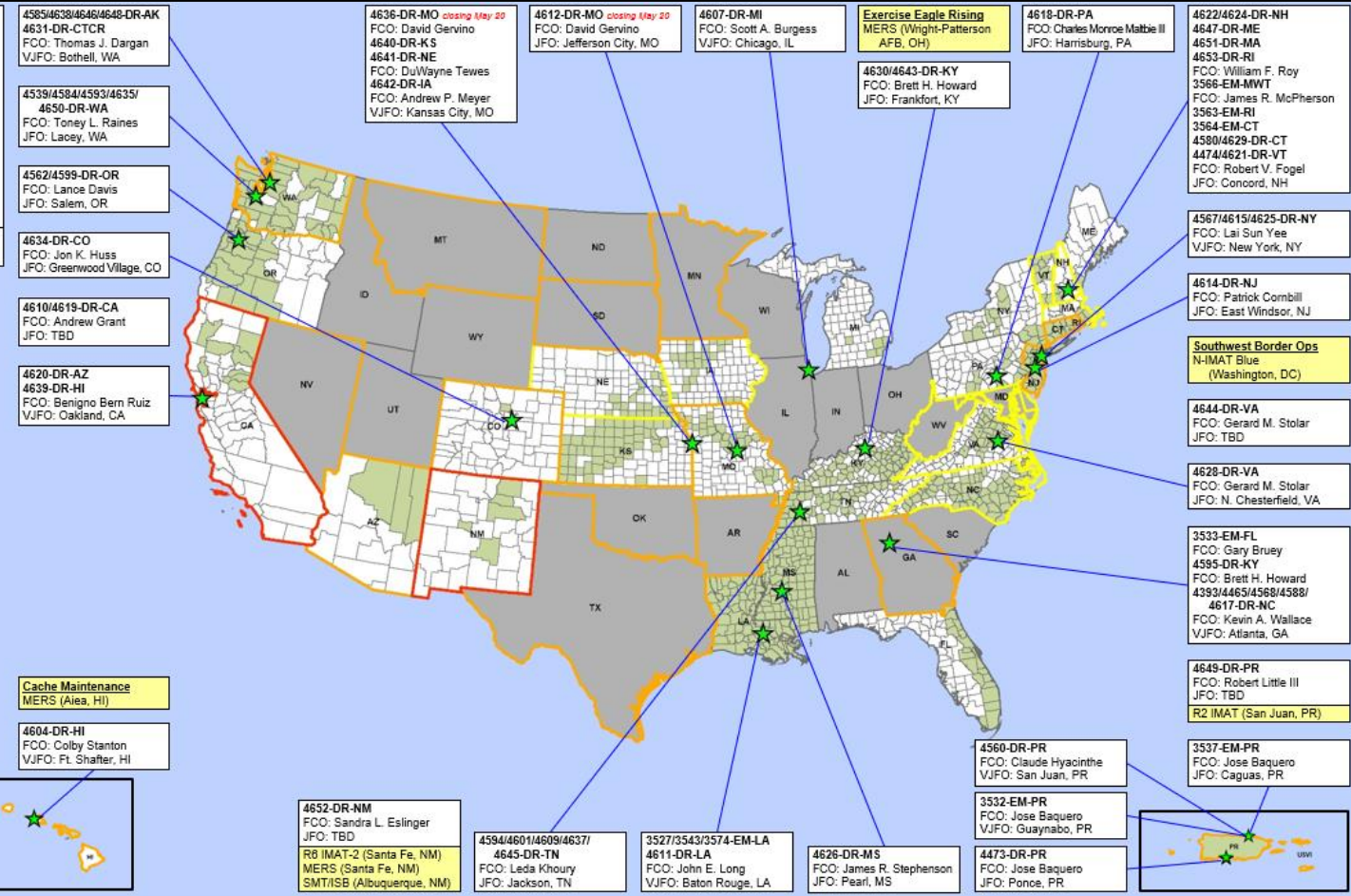
■ Declared County (non-COVID-19 Declarations)

■ Fully Activated

■ Partially Activated

■ Monitoring

As of 8:00 a.m. ET May 16, 2022
 Created by FEMA NWC



N-IMATs

2-4 Teams Available

Red	
White	Training
Blue	CBP EOC
Gold	

R-IMATs

≥ 7 Teams Available

I	1
II	PR
III	2
IV-1	
IV-2	
V	
VI-1	
VI-2	NM
VII	
VIII	
IX-1	Personnel
IX-2	Personnel
X	
FMC	PMC
NMC	Deployed

Team Status	US&R >66%	MERS > 66%	FCOs 2 Type I	IM WORKFORCE
Assigned:	28	36	55	13,755
Unavailable:	3	0	2	3,757 (-38)
Deployed:	0	2	47 (23 FCOR)	5,286 (-8)
Available:	25	34	6	34% / 4,712 (+46)

IM CADRE AVAILABILITY SUMMARY

Cadres with 25% or Less Availability

Civil Rights: 14% (16/112); Disability Integration: 20% (13/65); Field Leadership: 15% (21/144); Hazard Mitigation: 24% (324/1,330); Human Resources: 23% (40/176); Operations: 24% (90/378); Public Assistance: 20% (503/2,519); Planning: 20% (95/486)



FEMA

Helping people before, during, and after disasters.



Scan to subscribe to this briefing.