

FEMA National Watch Center

Daily Operations Briefing

Sunday, May 8, 2022

8:30 a.m. ET



FEMA

National Current Ops / Monitoring

New Significant Incidents / Ongoing Ops

- Wildfires – New Mexico
- Southwest Border Coordination Support – Washington, DC
- COVID-19

Hazard Monitoring

- Critical to Extremely Critical Fire Weather – Southwest to the Plains

Disaster Declaration Activity

- No new declaration activity

Event Monitoring

- No significant events



FEMA

Hermit's Peak Fire – New Mexico

Fire Name (Co., ST)	FMAG #	Acres Burned	Percent Contained	Evacuations	Structures (Homes / Other)			Fatalities / Injuries
					Threatened	Damaged	Destroyed	
Hermit's Peak (San Miguel, NM)	5438-FM-NM	172,284 (+4,275)	21% (+1)	M: 25,939	H: 22,289 (+4,014)	H: 9	H: 176	0 / 19 (+3)
				V: 0	O: 0	O: 5	O: 126	

Current Situation: Protection measures are being implemented to secure the Gallinas corridor area; interior fuel pockets in areas west of Las Vegas, NM continue to burn; direct firefighting continues in Montezuma and Mineral Hills areas. Anticipated containment date is July 31.

Lifeline Impacts:

Safety and Security:

- Initial damage assessments from imagery indicate 293 structures destroyed; 157 single-family homes, 109 manufactured homes, and 30 non-traditional homes are damaged

Food, Water, and Shelter:

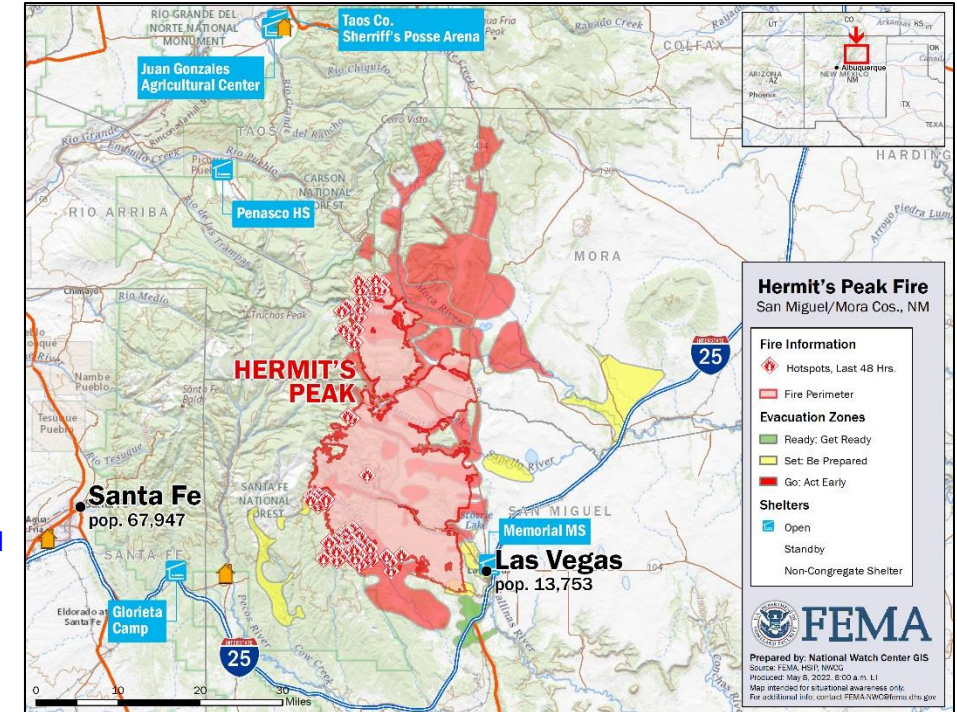
- 5 congregate shelters open with 702 occupants; 8 shelters on standby; ARC is in the process of opening one additional shelter; 3 Ruidoso hotels (non-congregate shelters) also sheltering evacuees (ARC Midnight Shelter Count as of 6:51 a.m. ET)
- Point of Distribution (POD) established at Glorieta Camp to support mass care distribution of emergency supplies (clean-up and comfort kits and cases of water)

Health and Medical:

- Precautionary evacuations of 197 patients from Behavioral Health Institute and the Alta Vista Hospital (ER remains open) in Las Vegas, NM; re-entry plan for Behavioral Health Institute established

Transportation:

- 12 roads remain closed in the Las Vegas and Los Alamos areas



FEMA

National Watch Center

Cerro Pelado Fire – New Mexico

Fire Name (Co., ST)	FMAG #	Acres Burned	Percent Contained	Evacuations	Structures (Homes / Other)			Fatalities / Injuries
					Threatened	Damaged	Destroyed	
Cerro Pelado (Sandoval, NM)	No FMAG Requested	34,671 (+1,508)	11% (-2)	M: 634	H: 34	H: 0	H: 3	0 / 1
				V: 0	O: 0	O: 0	O: 6	

Current Situation: The fire is burning approximately 5 miles southwest of Los Alamos National Laboratory (LANL). A controlled burn is planned along the Alamo trail, which will increase the defensive space between LANL and the fire. Estimated containment date is May 21.

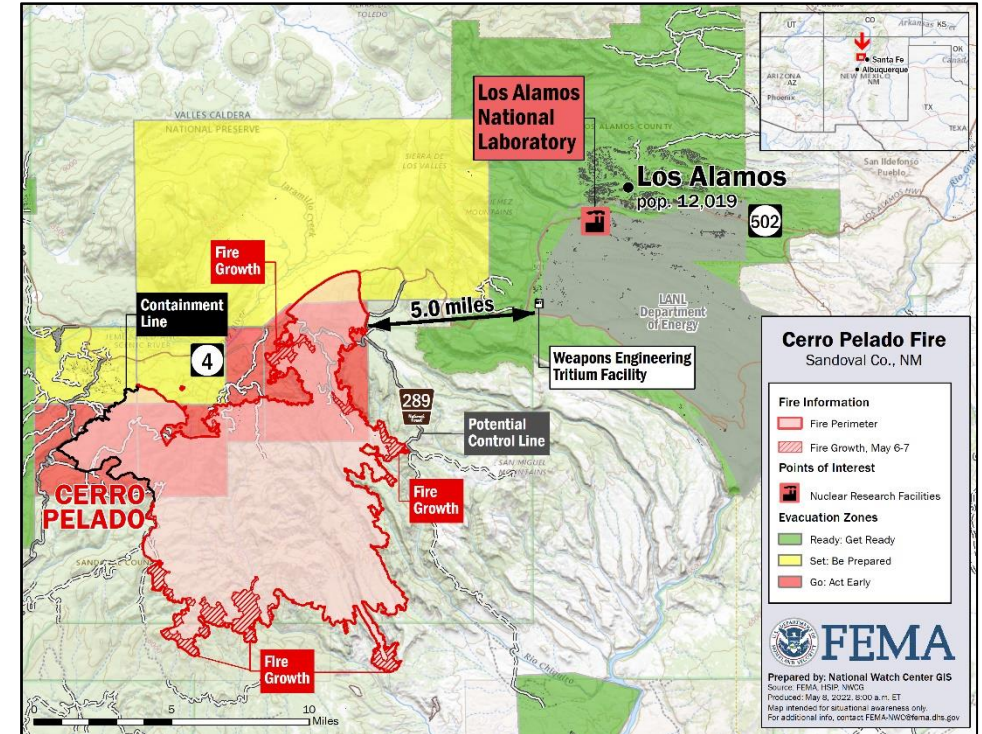
Lifeline Impacts:

Safety and Security:

- LANL has not issued any protective actions or protective action recommendations
- County measures and resources are in place to protect and evacuate the facility
- Decision trigger points are in place; the first is an initial 5-mile management action point that will trigger the activation of the LANL EOC, and extra fire mitigation efforts along portions of the perimeter. The next will trigger evacuations for portions of the surrounding county of Los Alamos.
- LANL is entering Stage 3 fire restrictions (trails maintained by DOE and the county are closed); actions have been taken to bolster LANL property and hotshot crews conducted a backburn to prevent spread along the eastern side; LANL in the “Ready” phase of Ready, Set, Go evacuation

Hazardous Materials:

- The possibility of any nuclear or radiological incident due to the fire remains low but NM is coordinating to identify any facilities housing chemicals or hazardous materials that could potentially be at risk

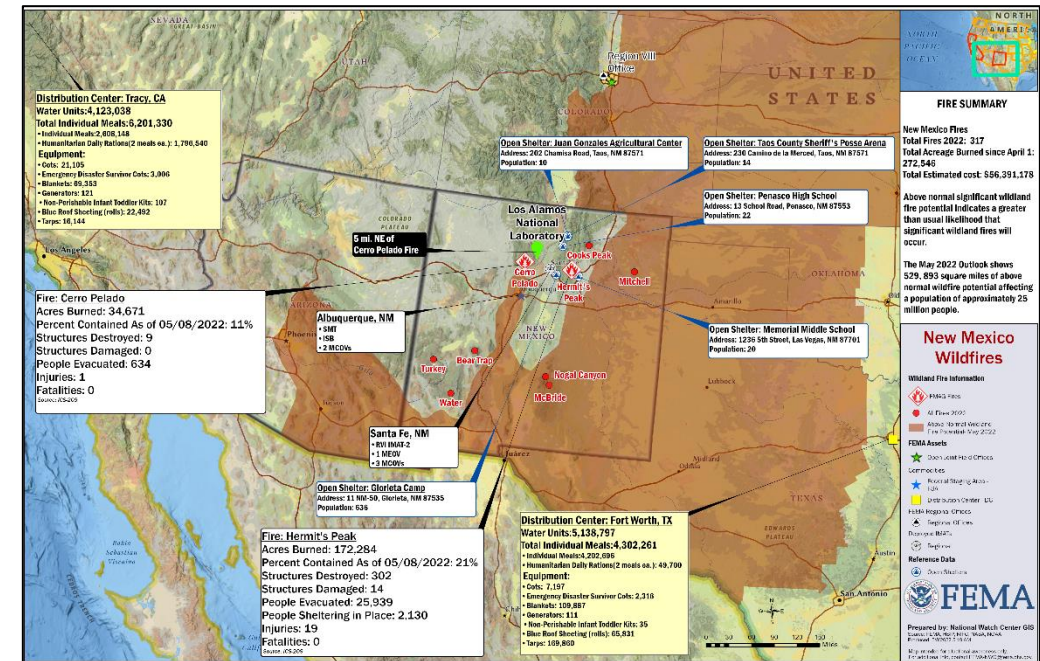


FEMA

National Watch Center

- NM EOC at Full Activation
- NM National Guard conducting water drops
- LANL is at normal operations; staff could shift to max telework with only essential staff
- NM coordinating with CA on EMAC requests:
 - One Type 3 strike team from CA on-site in Las Vegas, NM
 - One Type 3-5 strike team and one Type 2 initial attack strike team to arrive by the end of the week
 - One Recovery Specialist with watershed protection expertise requested

- NRCC at Level III (COVID-19); NWC continues to monitor and provide updates
- Incident Support Base (ISB) is fully operational at the Albuquerque Expo Center with ISB team, cache, commodities (water, meals, cots, blankets, shuttles), 29 generators, 10 Disaster Recovery Center (DRC) kits, and IMAT equipment
- MERS: One Mobile Emergency Operations Vehicle (MEOV) and two Mobile Communications Office Vehicles (MCOV) are on site; one MCOV was to arrive May 7, and two additional MCOVs to arrive May 8
- ESF-3 USACE Temporary Power Management Cell on-site at ISB; IMAT and USACE coordinating generator installation requirements with NM
- Preliminary Damage Assessments (PDAs) teams are on site; Public Assistance (PA) PDAs in progress
- Major Disaster Declaration FEMA-4652-DR-NM was approved on May 4 for wildfires and straight-line winds during the period of April 5, 2022, and continuing



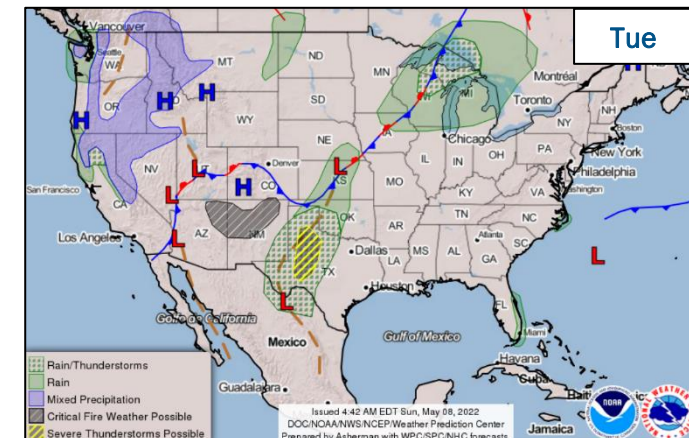
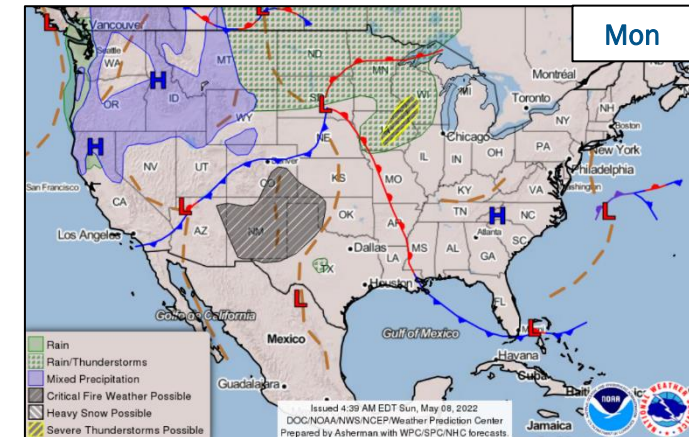
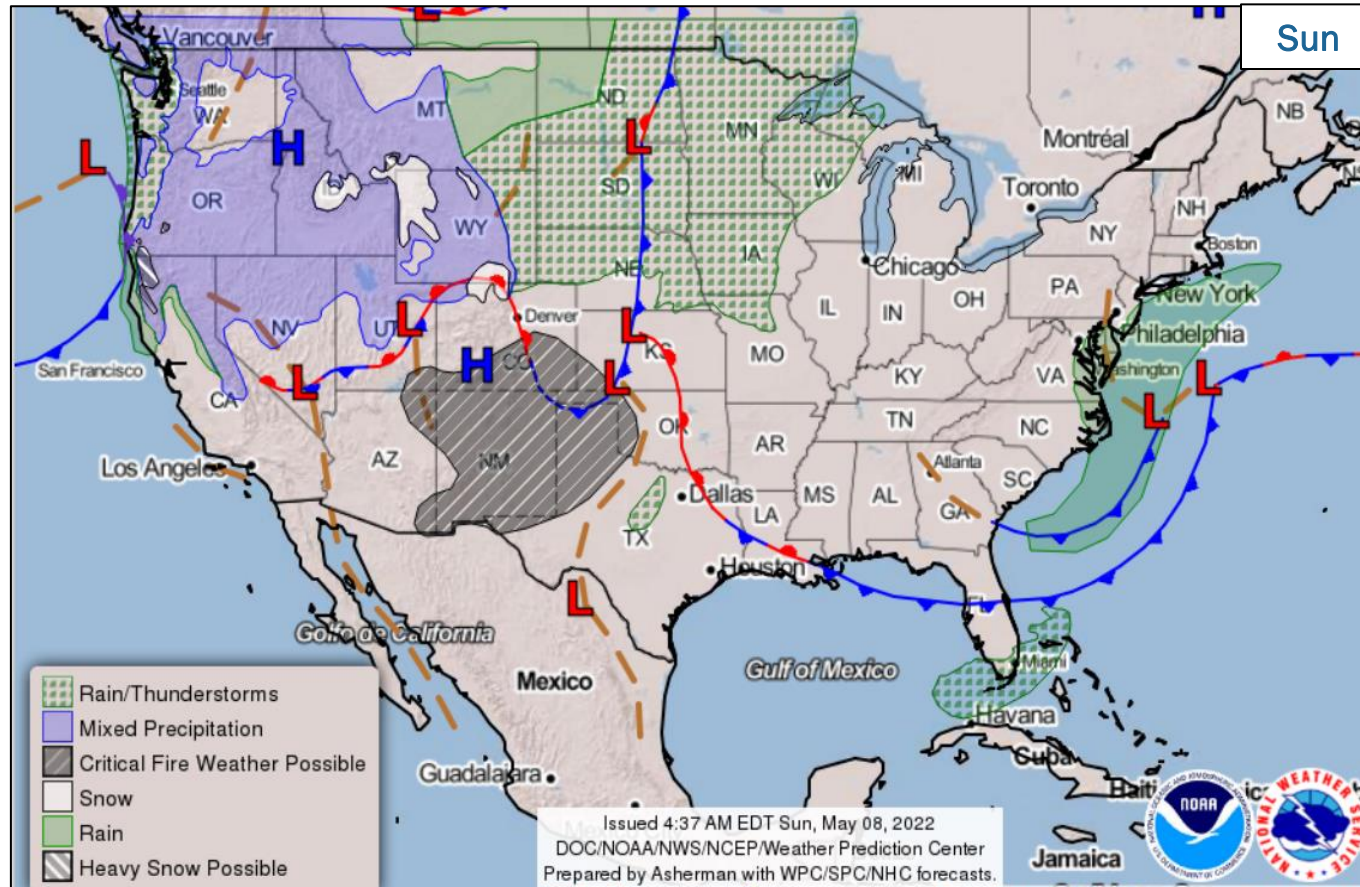
- Regional Response Coordination Center (RRCC) at Level III, day shift only, with ESFs 2, 3, 4, 6, 7, 11, 12, and 15; RRCC to field transition coordination is estimated to take place this week
- Region VI IMAT deployed to NM EOC
- Initial Operating Facility (IOF) location has been secured; will be available Monday
- JFO kits and shuttle fleet will deploy May 8-9
- 119 personnel deployed to FEMA-4652-DR-NM, including Disaster Survivor Assistance (DSA) personnel



FEMA

National Watch Center

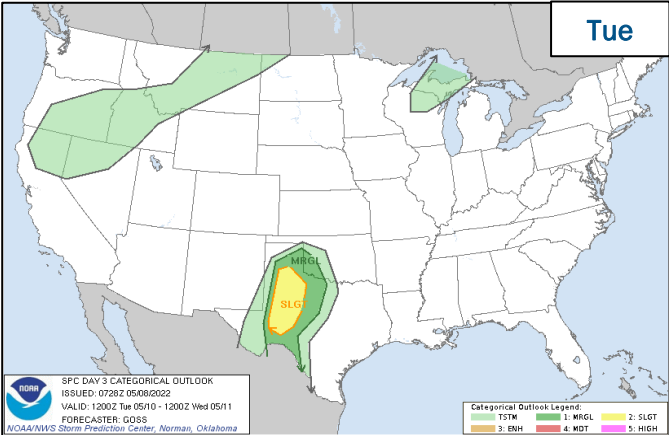
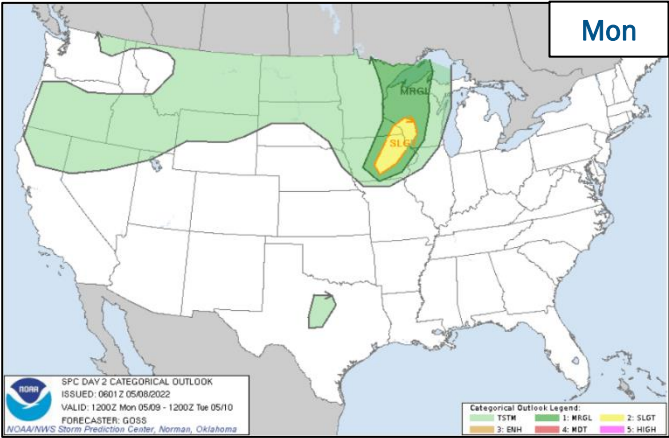
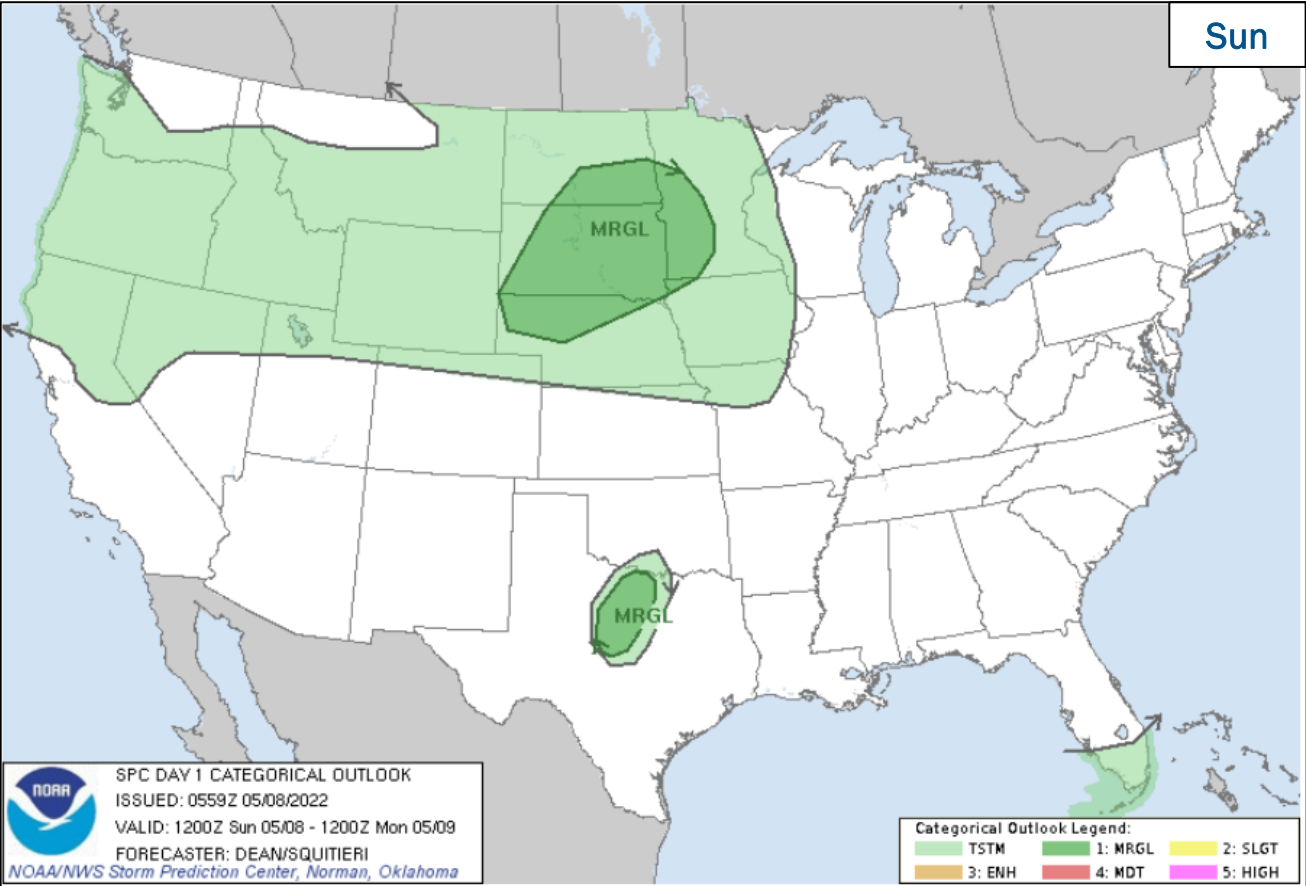
National Weather Forecast



FEMA

National Watch Center

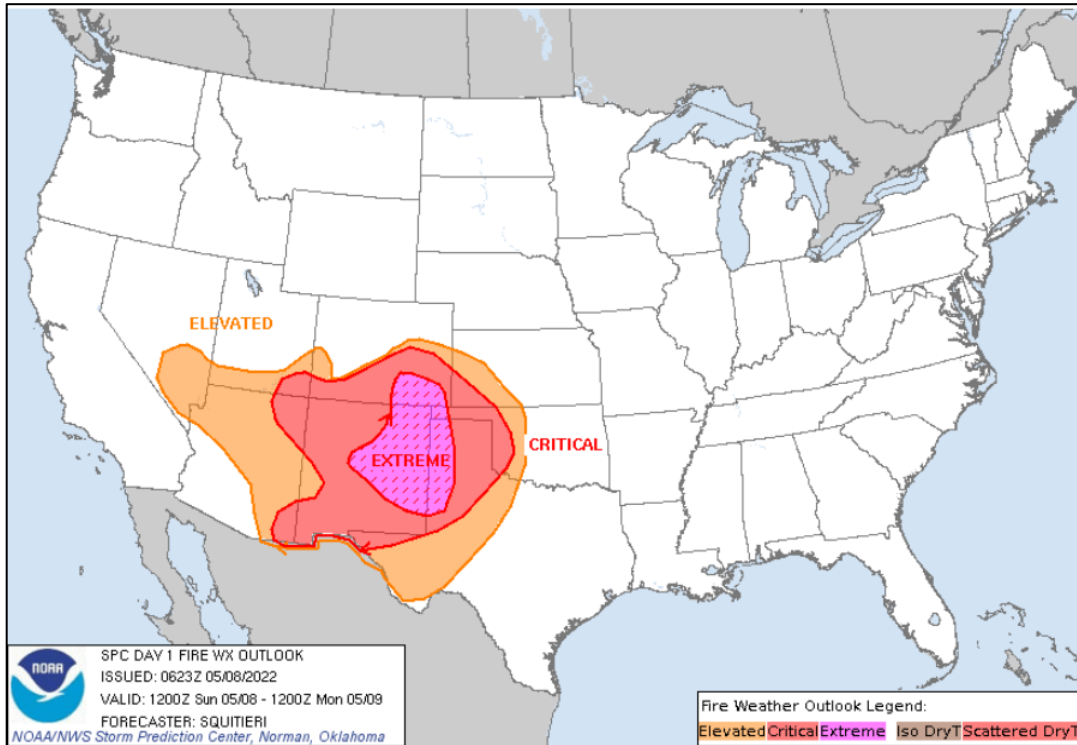
Severe Weather Outlook



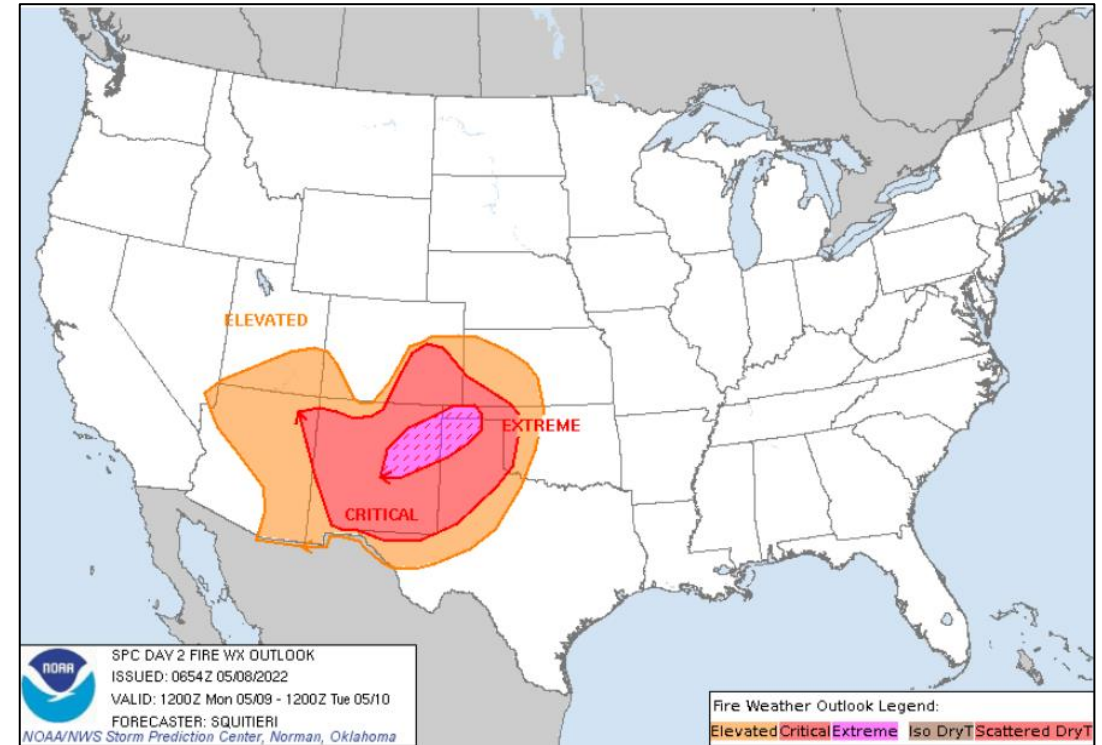
FEMA

National Watch Center

Fire Weather Outlook



Today



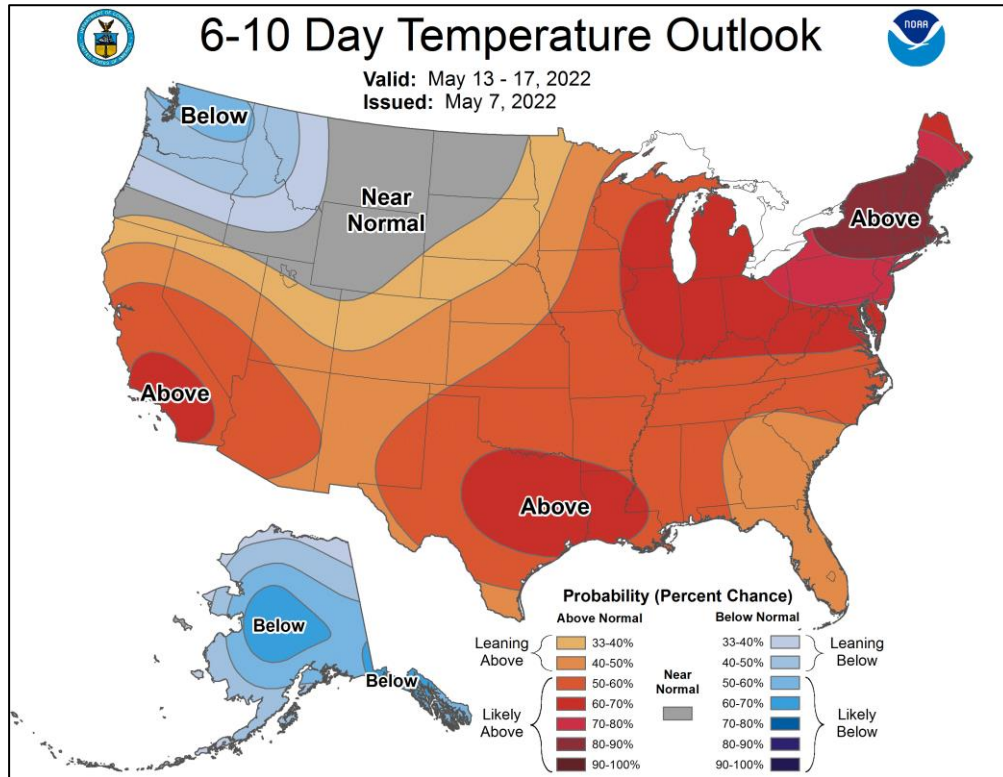
Tomorrow



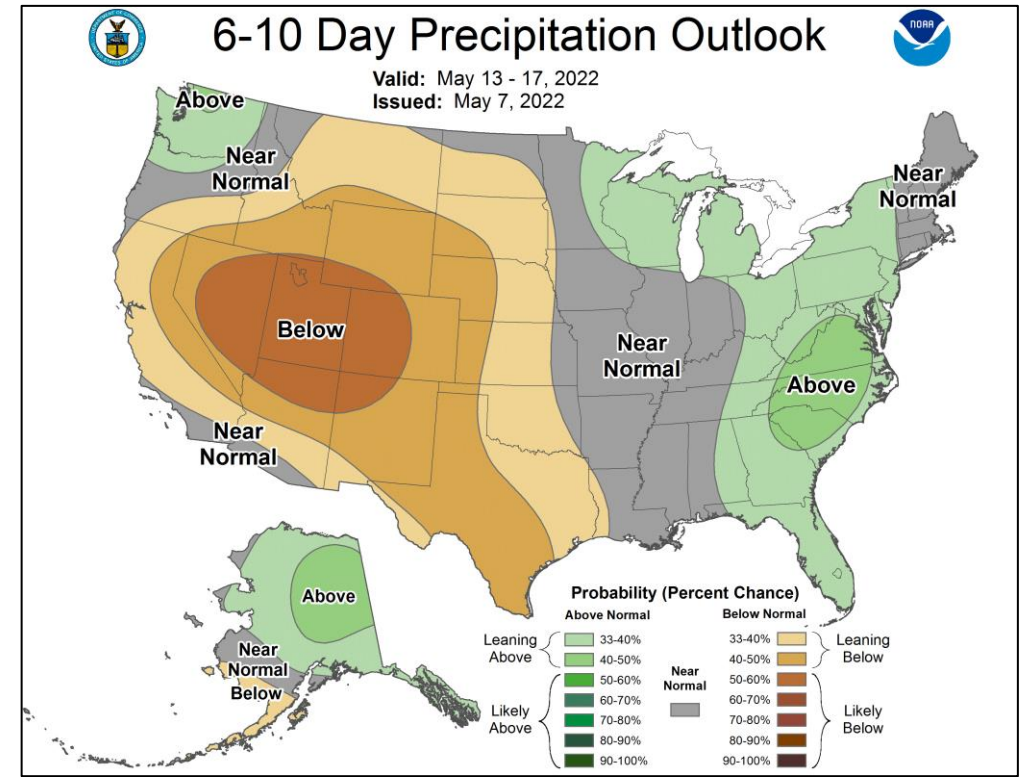
FEMA

National Watch Center

Long Range Outlooks – May 13-17



6-10 Day Temperature Probability



6-10 Day Precipitation Probability



FEMA

National Watch Center

Declaration Requests in Process – 4

State / Tribe / Territory – Incident Description	Type	IA	PA	HM	Requested
RI – Severe Winter Storm and Snowstorm	DR		X	X	Apr 12
MS – Severe Storm, Straight-line Winds, and Tornadoes	DR	X		X	Apr 28
MS – Severe Storm, Straight-line Winds, and Tornadoes	DR	X		X	Apr 29
KS – Winter Storms and Straight-line Winds	DR		X	X	May 3



FEMA

FEMA Common Operating Picture

FEMA HQ

NWC

Monitoring

NRCC

Level III

FEMA REGIONS

Watch

Monitoring

RRCC

I Rostered

II Rostered

III Rostered

IV Rostered

V Rostered

VI Level III

VII Rostered

VIII Rostered

IX Rostered

X Rostered

Notes:

NRCC: COVID-19

RVI: Wildfire Activity
(Dayshift only)

STATE EOCs:
NJ: Remnants of Ida
PR: Earthquake Recovery
DE, IA, CO, MT, & WA:
Avian Flu
GA: Supply Chain
Disruptions
MO, TN, KY, OK, IA, & KS:
Severe Weather
TN, NM, KS, NE, & AZ:
Wildfire Activity
MN, OK, MO, AK, & WA:
Flooding
MT & WA: Winter Storms
UT: Senator's Funeral & Iron
Man World Championship

All other state activations
for COVID-19

Surge Capacity Force

Rostered Members: 7,774

Major Disasters (DR): 58

Emergency Disasters (EM): 9

JFOs: 13 / VJFOs: 10

Staging Area

Declared County
(non-COVID-19 Declarations)

Fully Activated

Partially Activated

Monitoring

As of 8:00 a.m. ET May 8, 2022
Created by FEMA NWC

The map displays the contiguous United States, Alaska, and Hawaii. It uses color coding to indicate disaster status: Red for Fully Activated, White for Partially Activated, Blue for Monitoring, and Green for Staging Areas. State boundaries are shown in grey. Numerous callout boxes provide details for specific disasters, including their codes, names, and the Federal Coordinating Officer (FCO) or Joint Field Office (JFO) location.

Callout Boxes:

- 4585/4638/4646/4648-DR-AK: FCO: Thomas J. Dargan, VJFO: Bothell, WA
- 4539/4584/4593/4635/-4650-DR-WA: FCO: Toney L. Raines, VJFO: Lacey, WA
- 4562/4599-DR-OR: FCO: Lance Davis, VJFO: Salem, OR
- 4634-DR-CO: FCO: Jon K. Huss, VJFO: Greenwood Village, CO
- 4610/4619-DR-CA: FCO: Andrew Grant, VJFO: TBD
- 4620-DR-AZ: FCO: Benigno Bern Ruiz, VJFO: Oakland, CA
- 4639-DR-HI: FCO: Benigno Bern Ruiz, VJFO: Oakland, CA
- COVID-19 Support: R9 IMAT-1 (Pago Pago, AS)
- 4604-DR-HI: FCO: Colby Stanton, VJFO: Ft. Shafter, HI
- 4636-DR-MO closing May 20: FCO: David Gervino, VJFO: Jefferson City, MO
- 4612-DR-MO closing May 20: FCO: David Gervino, VJFO: Jefferson City, MO
- 4607-DR-MI: FCO: Scott A. Burgess, VJFO: Chicago, IL
- Kentucky Derby MERS (Louisville, KY)
- 4630/4643-DR-KY: FCO: Brett H. Howard, VJFO: Frankfort, KY
- 4618-DR-PA: FCO: E. Craig Levy, Jr., VJFO: Harrisburg, PA
- 4622/4624-DR-NH: FCO: William F. Roy, VJFO: Concord, NH
- 4647-DR-ME: FCO: James R. McPherson, VJFO: Bangor, ME
- 4651-DR-MA: FCO: Robert V. Fogel, VJFO: Concord, MA
- 4567/4615/4625-DR-NY: FCO: Lai Sun Yee, VJFO: New York, NY
- 4614-DR-NJ: FCO: Patrick Cornbill, VJFO: East Windsor, NJ
- Southwest Border Ops N-IMAT Blue (Washington, DC)
- 4644-DR-VA: FCO: Gerard M. Stolar, VJFO: TBD
- 4628-DR-VA: FCO: Gerard M. Stolar, VJFO: N. Chesterfield, VA
- 3533-EM-FL: FCO: Gary Bruey, VJFO: Tallahassee, FL
- 4595-DR-KY: FCO: Brett H. Howard, VJFO: Frankfort, KY
- 4617-DR-NC: FCO: Kevin A. Wallace, VJFO: Atlanta, GA
- 4649-DR-PR: FCO: Robert Little III, VJFO: TBD
- R2 IMAT (San Juan, PR)
- G2 Maintenance MERS (San Juan, PR)
- 3537-EM-PR: FCO: Jose Baquero, VJFO: Caguas, PR
- 4560-DR-PR: FCO: Claude Hyacinthe, VJFO: San Juan, PR
- 3532-EM-PR: FCO: Jose Baquero, VJFO: Guaynabo, PR
- 4473-DR-PR: FCO: Jose Baquero, VJFO: Ponce, PR
- 4652-DR-NM: FCO: Sandra L. Eslinger, VJFO: TBD
- R8 IMAT-2 (Santa Fe, NM), MERS (Albuquerque/Santa Fe, NM), SMT/ISB (Albuquerque, NM)
- 4594/4601/4609/4637/-4645-DR-TN: FCO: Leda Khouri, VJFO: Jackson, TN
- 3527/3543/3574-EM-LA: FCO: John E. Long, VJFO: Baton Rouge, LA
- 4626-DR-MS: FCO: James R. Stephenson, VJFO: Pearl, MS

N-IMATs

2-4 Teams Available

Red

White

Blue

Gold

Training

CBP EOC

R-IMATs

≥ 7 Teams Available

I

II

III

IV-1

IV-2

V

VI-1

VI-2

VII

VIII

IX-1

IX-2

X

FMC

NMC

2

PR

1

NM

3

AS

Personnel

PMC

Deployed

Team Status	US&R >66%	MERS > 66%	FCOs 2 Type I	IM WORKFORCE	IM CADRE AVAILABILITY SUMMARY Cadres with 25% or Less Availability
Assigned:	28	36	55	13,740	Civil Rights: 23% (25/111); Disability Integration: 21% (14/66); Field Leadership: 16% (23/145); Hazard Mitigation: 25% (335/1,331); Human Resources: 23% (40/175); Operations: 22% (84/381); Public Assistance: 20% (499/2,520); Planning: 20% (98/488)
Unavailable:	3	0	1	3,804 (-4)	
Deployed:	0	1	45 (23 FCOR)	5,073 (-9)	
Available:	25	35	9	35% / 4,863 (+13)	



FEMA

Helping people before, during, and after disasters.



Scan to subscribe to this briefing.