

FEMA National Watch Center

Daily Operations Briefing

Saturday, October 30, 2021

8:30 a.m. ET



FEMA

National Current Ops / Monitoring

New Significant Incidents / Ongoing Ops

- None

Hazard Monitoring

- Heavy Rain/Flash Flooding - Northeast
- Rain/Thunderstorms – Pacific Northwest, Central Great Basin, and Northeast
- Space Weather
- Tropical Activity:
 - Atlantic:
 - Disturbance 1: Med (60%)
 - Disturbance 2: Low (20%)

Disaster Declaration Activity

- None

Event Monitoring

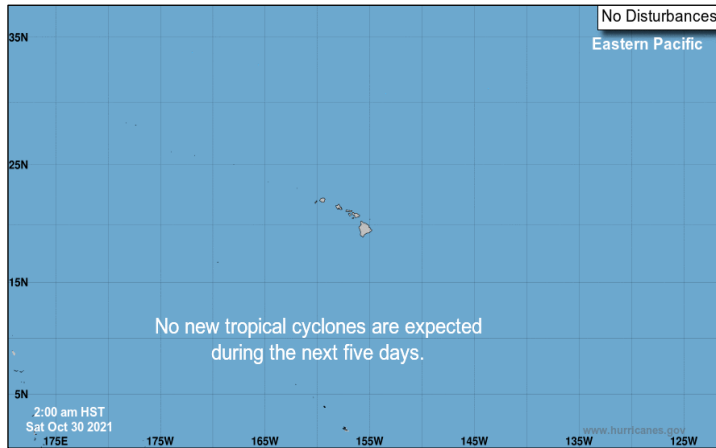
- None



FEMA

Tropical Outlook – Five Day

Central Pacific



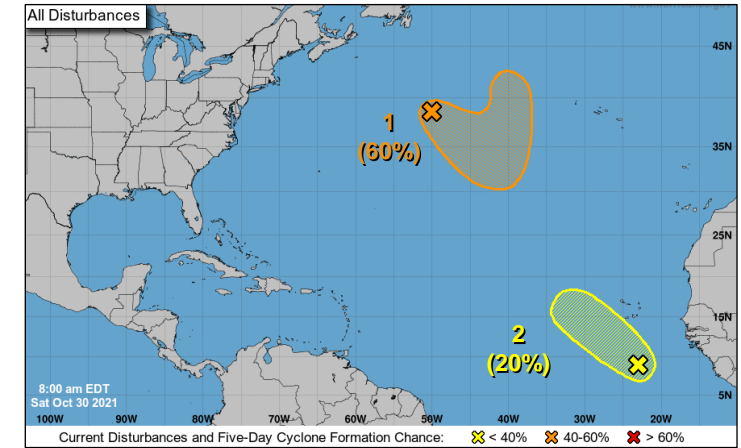
- No significant activity

Eastern Pacific



- No significant activity

Atlantic



Disturbance 1 (as of 8:00 a.m. ET)

- Several hundred miles SSE of Cape Race, Newfoundland
- Formation chance through 48 hours: **Med (50%)**; 5 days: **Med (60%)**

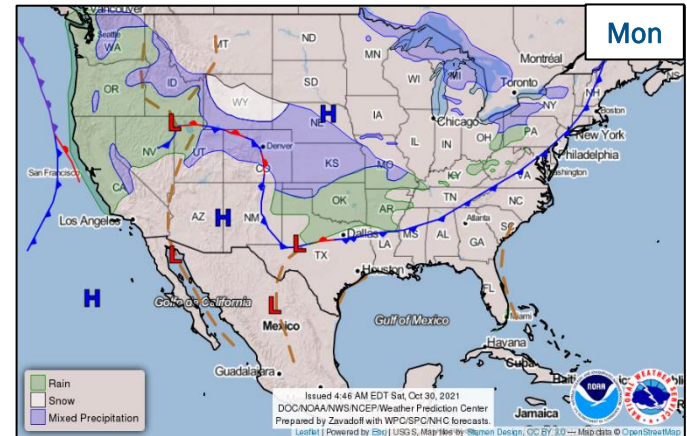
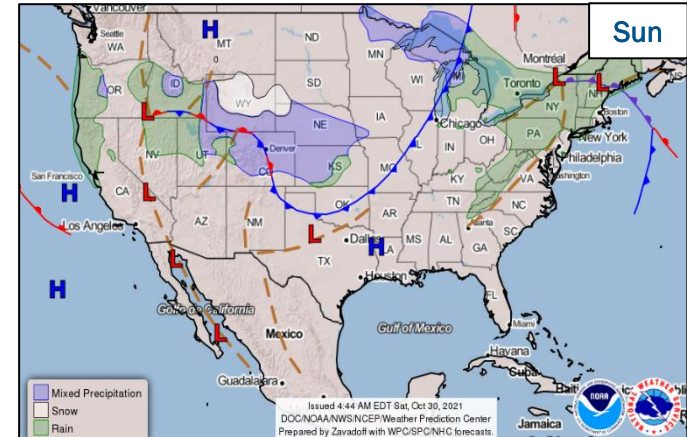
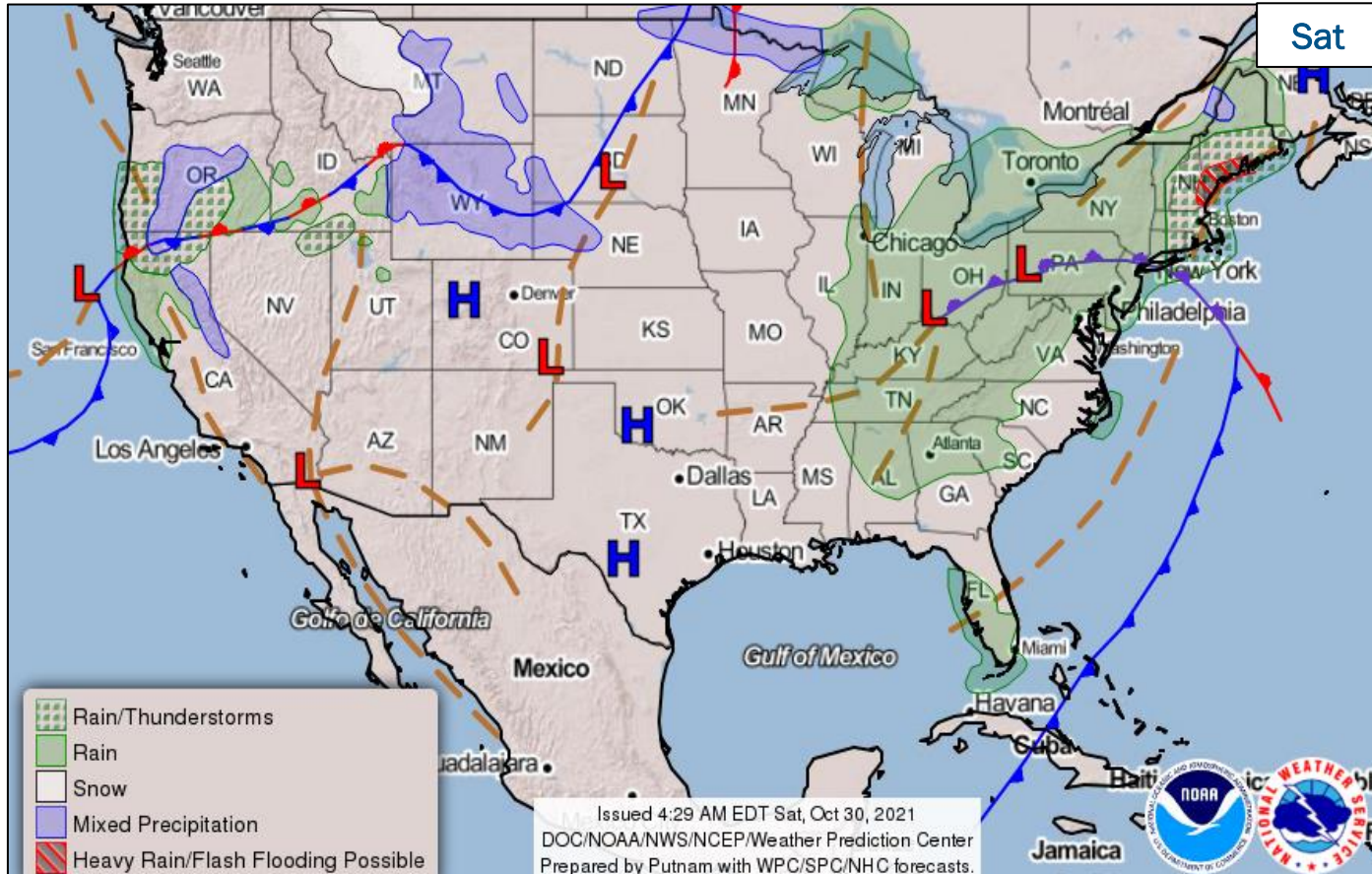
Disturbance 2 (as of 8:00 a.m. ET)

- Several hundred miles S of Cabo Verde Islands
- Formation chance through 48 hours: **Low (10%)**; 5 days: **Low (20%)**



FEMA

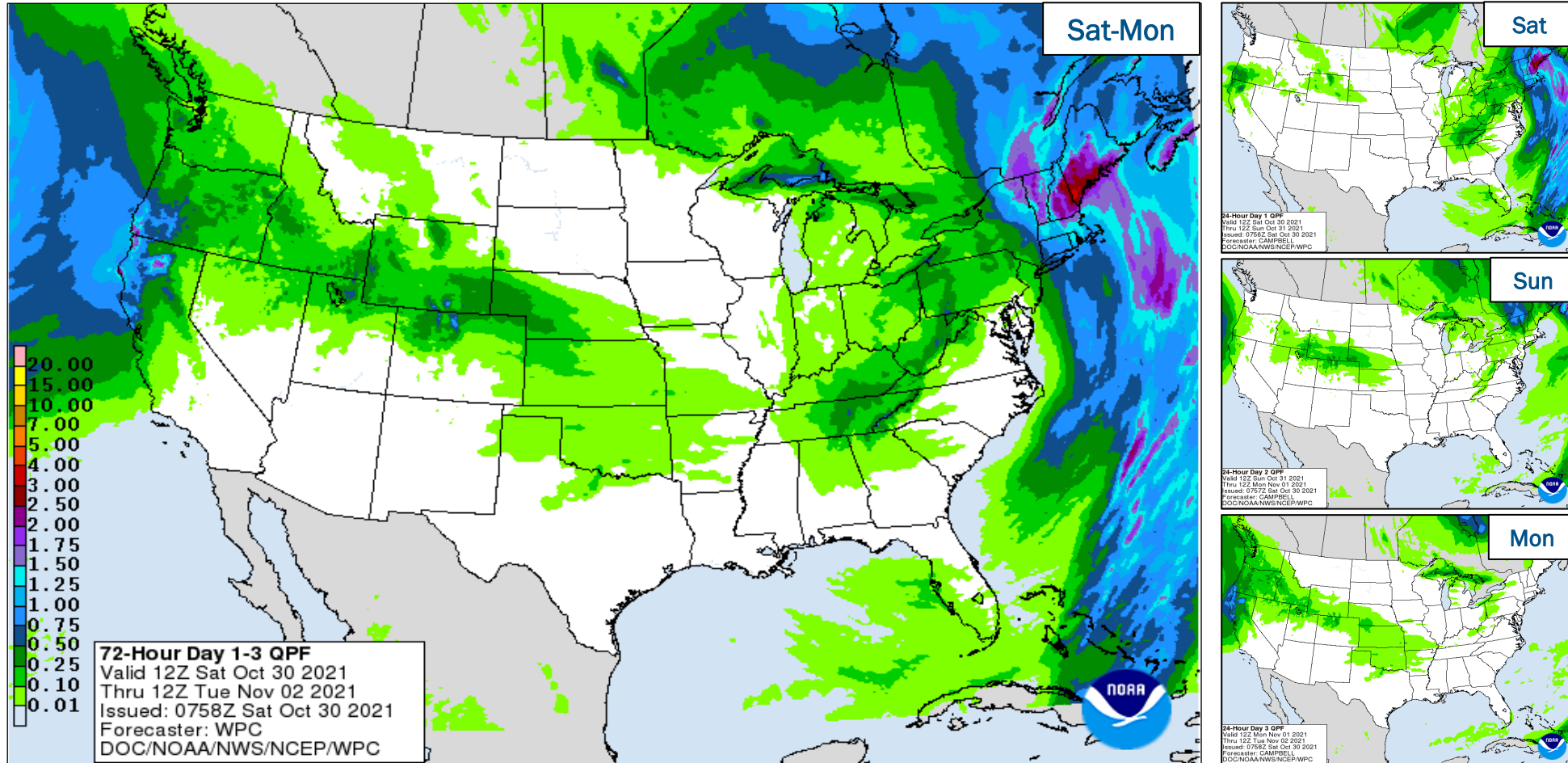
National Weather Forecast



FEMA

National Watch Center

Precipitation Forecast

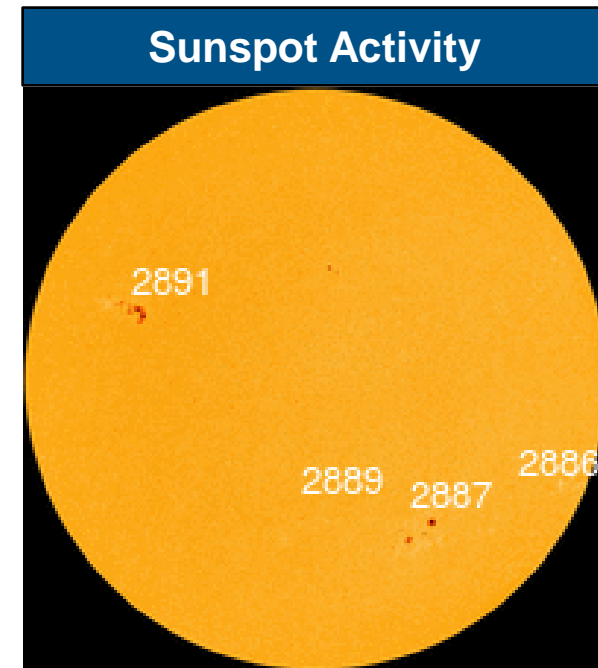
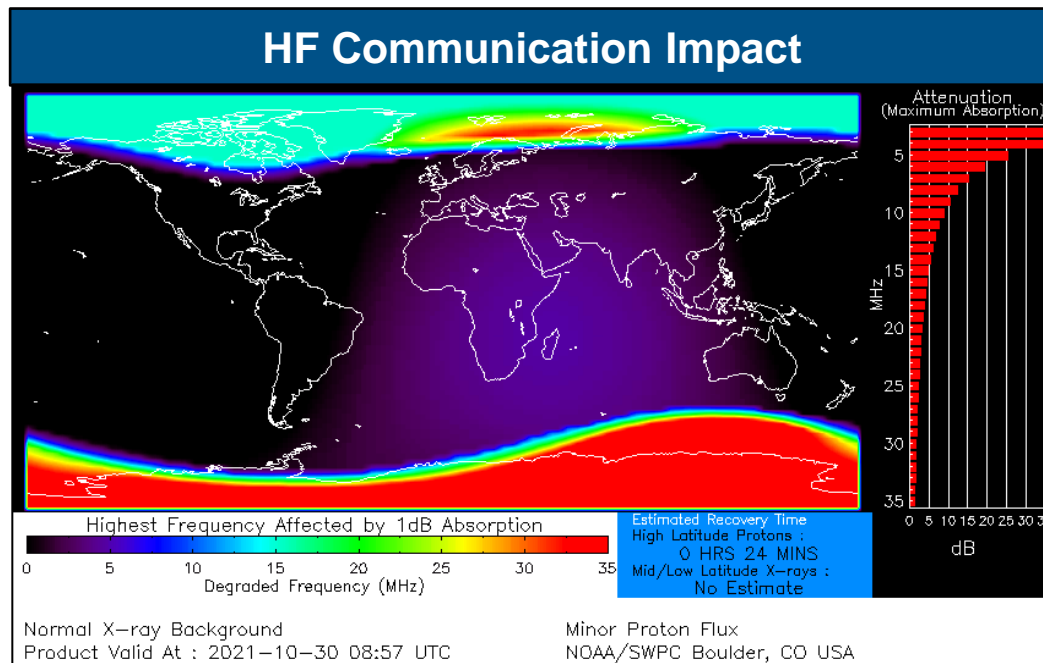


FEMA

Space Weather Outlook

	Space Weather Activity	Geomagnetic Storms	Solar Radiation	Radio Blackouts
Past 24 Hours	Minor	None	S1	None
Next 24 Hours	Strong	G3	S1	R2

For further information on NOAA Space Weather Scales refer to: <http://www.swpc.noaa.gov/noaa-scales-explanation>
 For further information on Sunspot Activity refer to: <https://www.swpc.noaa.gov/phenomena/sunspotsolar-cycle>



FEMA

Joint Preliminary Damage Assessments

Region	State / Location	Incident	IA	Number of Counties		Start - End
			PA	Requested	Complete	
I	CT	Ida Sep 1	IA	8	8	9/27 - 10/20
			PA	8	4 (+2)	9/27 - TBD
	RI	Ida Sep 1-2	IA	0	0	N/A
			PA	1	0	10/12 - TBD



FEMA

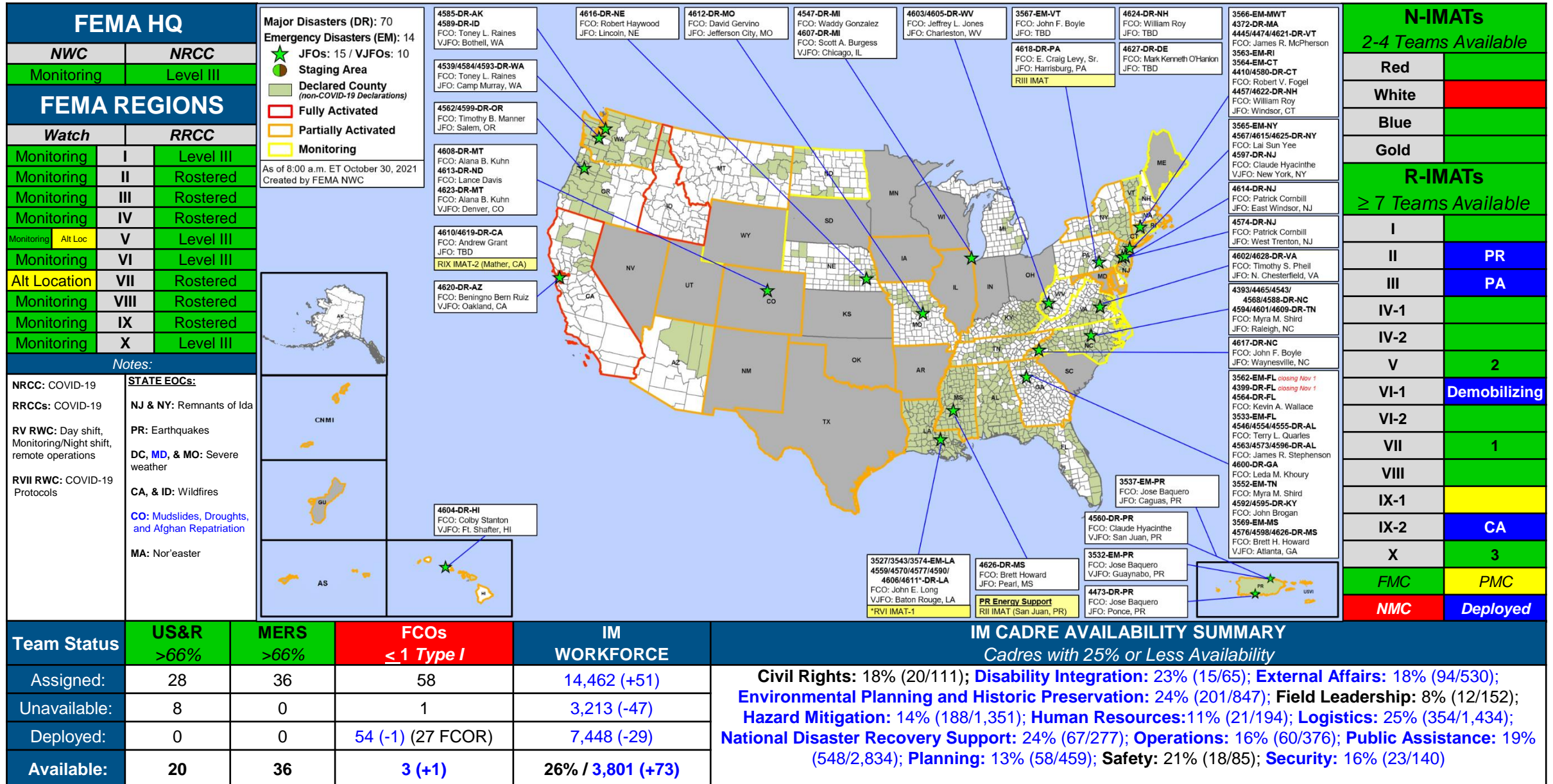
Declaration Requests in Process – 2

State / Tribe / Territory – Incident Description	Type	IA	PA	HM	Requested
NM – Severe Storms and Flooding	DR	X	X	X	Oct 6
CT – Remnants of Hurricane Ida	DR	X	X	X	Oct 22



FEMA

FEMA Common Operating Picture



Team Status

Team Status	US&R >66%	MERS >66%	FCOs ≤ 1 Type I	IM WORKFORCE
Assigned:	28	36	58	14,462 (+51)
Unavailable:	8	0	1	3,213 (-47)
Deployed:	0	0	54 (-1) (27 FCOR)	7,448 (-29)
Available:	20	36	3 (+1)	26% / 3,801 (+73)

IM CADRE AVAILABILITY SUMMARY

Cadres with 25% or Less Availability

Civil Rights: 18% (20/111); Disability Integration: 23% (15/65); External Affairs: 18% (94/530); Environmental Planning and Historic Preservation: 24% (201/847); Field Leadership: 8% (12/152); Hazard Mitigation: 14% (188/1,351); Human Resources: 11% (21/194); Logistics: 25% (354/1,434); National Disaster Recovery Support: 24% (67/277); Operations: 16% (60/376); Public Assistance: 19% (548/2,834); Planning: 13% (58/459); Safety: 21% (18/85); Security: 16% (23/140)



FEMA

Helping people before, during, and after disasters.



Scan to subscribe to this briefing.