

# Preparedness Trivia

---

This toolkit provides direction on how to run a trivia game for the public that can test a participant's knowledge on emergency management concepts. This sheet also explains how to access and run the activity on the Mentimeter program.

<a href="#">Notes</a> .....	Page 19
<a href="#">Rules</a> .....	Page 19
<a href="#">Setup</a> .....	Page 19
<a href="#">Question &amp; Answer Bank</a> .....	Page 22

## Notes

- There should be two hosts, Moderating Host to present, and Technical Host to monitor the chat.
- Members can view game on Zoom or other presentation platform but will answer questions on a separate internet browser window or mobile device using Mentimeter.
- Please note that there is *no winner for this game*.
- The questions in Mentimeter are customizable. Feel free to create your own questions and change formats to accommodate your audience, or copy-paste the example questions in the Question & Answer Bank
- Some questions will have more than one answer.

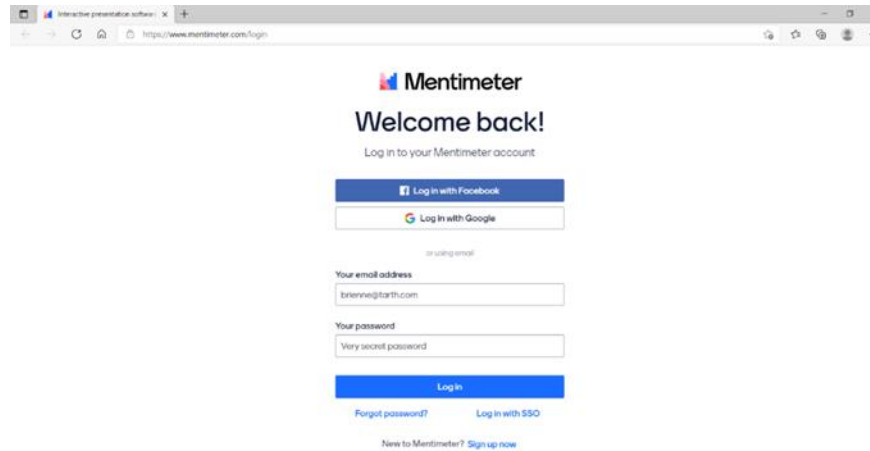
## Rules

- After everyone is logged into Mentimeter on a separate device, the Moderating Host will read the questions from their hidden screen and allow contestants to answer them on Mentimeter.
- When everyone is done, the Moderating Host will reveal the results of the contestant's aggregated responses. Then, the Host will finally provide the correct answer(s).

# Setup

## Login:

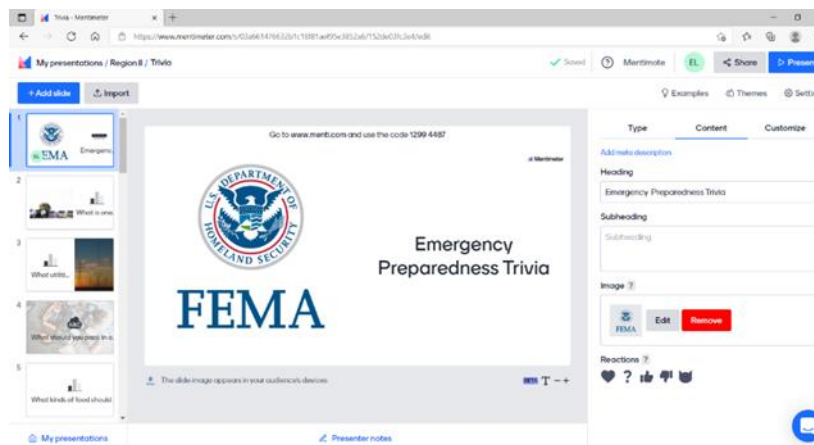
1. To create a trivia game you can use software like Mentimeter.: [Interactive presentation software - Mentimeter](#)



### Step 1: Create a Mentimeter account

You can create a trivia presentation using the different question types and adding designs. For more tutorials visit the mentimeter website.

Once the presentation is complete you will begin the presentation by clicking on the blue **“Present”** button in the top-right corner of the webpage.



### 1. Step 3: Click “Present” to begin the presentation

Ask the audience to go to [www.menti.com](http://www.menti.com) on their mobile device and enter the code on the screen. Participants will be able to follow the presentation and answer the trivia questions on their mobile devices, personal laptops, or tablets.



2. Step 4: Go to [www.menti.com](https://www.menti.com) and enter the code

### Question & Answer Bank (correct answer in bold red)

1. What dates are the Atlantic Hurricane Season?
  - a. May 15- November 30
  - b. June 1- November 30**
  - c. July 7 –October 30
2. What is the best way to communicate during a disaster in the continental US? (CONUS)
  - a. Text Message**
  - b. Phone Call
  - c. Internet chat
  - d. Whistle
  - e. Mail
3. Where can you get information about emergency evacuation orders?
  - a. Emergency alerts broadcasted on most electronic devices**
  - b. NOAA weather radio**
  - c. Seek info online, via radio, computer, cellphone, or television**
  - d. Register for your local Emergency Management Agency's wireless emergency alerts**
4. Should you have a family disaster plan?
  - a. Yes**
  - b. No
  - c. Maybe
5. Where should you include a copy of your Emergency Communications Plan?
  - a. On the fridge**
  - b. In your closet
  - c. At your job

6. Who are your emergency contacts? (Free Response)
  - a. **Example: Family, Friends, Roommates, Coworkers, etc.**
7. Should you have an emergency out-of-town contact?
  - a. No
  - b. **Yes**
8. Why should you have an out-of-town contact?
  - a. **Because even when local telephone calls are impossible, you may still be able to call outside of your immediate area**
  - b. **Having an out-of-town contact provides a point of contact for your whole family to call and check-in with when unable to call each other locally**
9. If your family is told to evacuate the neighborhood and you are not together, where do you meet?
  - a. In the closet
  - b. Stay inside the house
  - c. **At a pre-planned meeting area**
10. If you have to evacuate your home, what things should you take with you? Mark all that apply.
  - a. PlayStation
  - b. Television
  - c. **Emergency Kit**
  - d. **Important Documents**
11. What should you pack in an emergency kit? (Open-Ended Response)
  - a. **Examples: Food, Water, First Aid, Knife, Radio, Cellphone & Charger, etc.**
12. What kinds of food should go in emergency kits?
  - a. Protein or fruit bars
  - b. High-energy foods
  - c. Ready-to-eat canned meats, fruits, and vegetables
  - d. **All of the above**
13. On average, for drinking and sanitation, how much water per person per day should you have in your Emergency Kit?
  - a. 6 cups
  - b. 1 liter
  - c. **1 gallon**
  - d. 1 quart
14. What important documents should you gather before a disaster? Mark all that apply.
  - a. **Insurance Information**

- b. Copies of Identification (SSID, Driver's License)**
- c. Professional Resume
- d. Health History/Medical Information**
- e. Family Contact Information**
- f. Grocery store receipts

15. What devices should go in your emergency kit?

- a. Hand-Crank Radio**
- b. Cellphone**
- c. Battery Bank**
- d. Toaster

16. What tools should you include in an Emergency Kit?

- a. Dust mask**
- b. Wrench**
- c. Pliers**
- d. Can opener**

17. What supplies should you include in a first-aid kit?

- a. Bandages**
- b. Antiseptic**
- c. Personal Protective Equipment (PPE)**
- d. Aspirin**

18. What is one of the first things you should do after a disaster?

- a. Panic
- b. Assess the situation**
- c. Prepare your Emergency Kit
- d. Call grandma

19. If you have the ability, what should you shut off if you suspect it has been damaged?  
(Participants will be able to choose multiple answers)

- a. Natural gas valve**
- b. Internet
- c. Circuit breaker/fuse box**
- d. Water valve**

20. After returning to inspect your house following a disaster, what signs show that it may still be too dangerous to enter?

- a. Sparks, broken or frayed wires scattered around**
- b. Roof, foundation, or chimney cracks**
- c. Natural gas smell or hissing/blowing sound**
- d. Spilled food on the floor

21. What precautions should be taken when returning to our home? Mark all that apply.

- a. Check utilities for damage
- b. Check for burned insulation, mold, water leaks
- c. Check any damages to the walls and windows
- d. Walk right in

22. Where should you shelter during a heat wave?

- a. Lowest levels in buildings
- b. Library or shopping mall
- c. Indoors by the window
- d. In a car

23. Where should you shelter during a severe thunderstorm?

- a. Under a tree
- b. Your car
- c. Near a concrete wall

24. How often should you check your smoke detectors?

- a. Every 5 months
- b. Every 3 months
- c. Every month

25. In case of flooding, what is something that you should never do?

- a. Listen to NOAA Weather Radio or local alerting systems for instructions
- b. Wade through water to get to dry ground
- c. Stay in a car trapped in fast-moving water
- d. Turn on a backup generator in a flooded basement

26. What is a CDC-approved mask to wear?

- a. Single-layer mask
- b. A scarf
- c. Multi-layer mask
- d. KN95 mask

27. What are other ways to prepare for a disaster?

- a. Create an Emergency Plan
- b. Make your house safer
- c. Get involved in your Community
- d. Plan with Neighbors