

FEMA National Watch Center

# Daily Operations Briefing

Monday, August 16, 2021

8:30 a.m. ET



**FEMA**

# National Current Ops / Monitoring

---

## New Significant Incidents / Ongoing Ops

- Tropical Storm Fred
- Tropical Depression Grace
- Earthquake – Haiti

## Hazard Monitoring

- Heavy rain/flash flooding possible – Southwest, FL, & Mid-Atlantic
- Tropical Activity
  - Atlantic:
    - Tropical Storm Fred
    - Tropical Depression Grace
    - Tropical Depression Eight
  - Eastern Pacific:
    - Hurricane Linda (CAT 2)
  - Western Pacific:
    - Tropical Depression 16W

## Disaster Declaration Activity

- FMAGs approved – OR and WA

## Event Monitoring

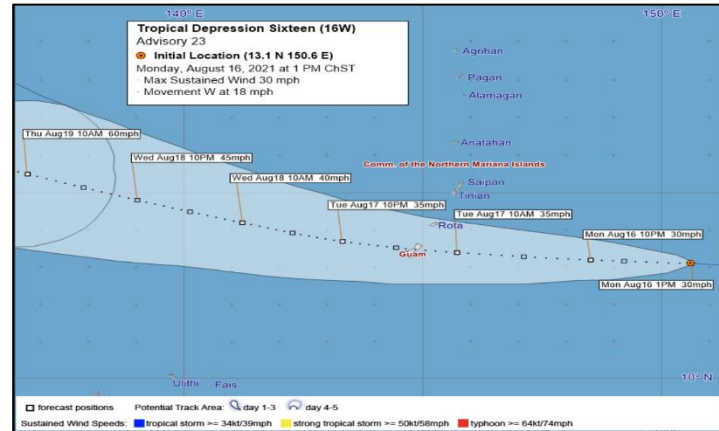
- None



FEMA

# Tropical Outlook – Five Day

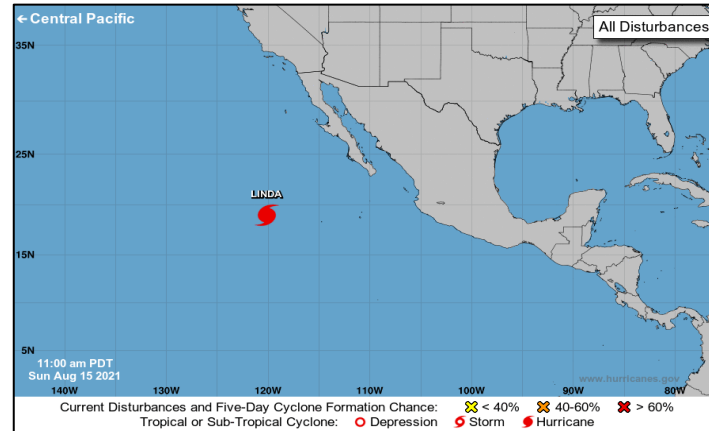
## Western Pacific



### Tropical Depression 16W (Advisory #24 as of 11:00 p.m. ET)

- 395 miles E of Guam
- Moving W at 18 mph
- Maximum sustained winds 30 mph

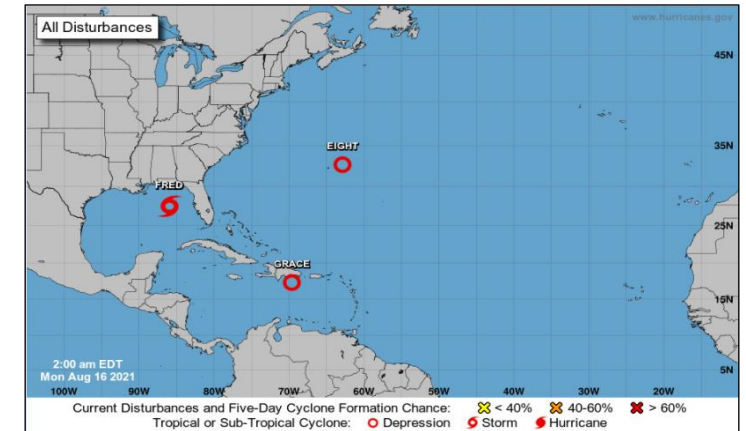
## Eastern Pacific



### Hurricane Linda (CAT 2) (Advisory #25 as of 5:00 a.m. ET)

- 900 miles WSW of southern tip of Baja California
- Moving WNW at 10 mph
- Maximum sustained winds 110 mph
- Expected to maintain hurricane strength through Wednesday
- Hurricane force winds extend 30 miles
- Tropical storm force winds extend 105 miles

## Atlantic



### Tropical Storm Fred (Advisory #27 as of 5:00 a.m. ET)

- 160 miles S of Panama City, FL
- Moving NNW at 9 mph
- Maximum sustained winds 50 mph
- Tropical storm force winds extend 90 miles
- Should make landfall in western FL Panhandle this afternoon or early evening

### Tropical Depression Grace (Advisory #12 as of 5:00 a.m. ET)

- 160 miles ESE of Port Au Prince, Haiti
- Moving WNW at 15 mph
- Maximum sustained winds at 35 mph
- Causing heavy rain in PR; by mid to late week, heavy rain may impact FL

### Tropical Depression Eight (Advisory 2 as of 5:00 a.m. ET)

- 110 miles NE of Bermuda
- Moving S at 5 mph
- Forecast to become a tropical storm later today

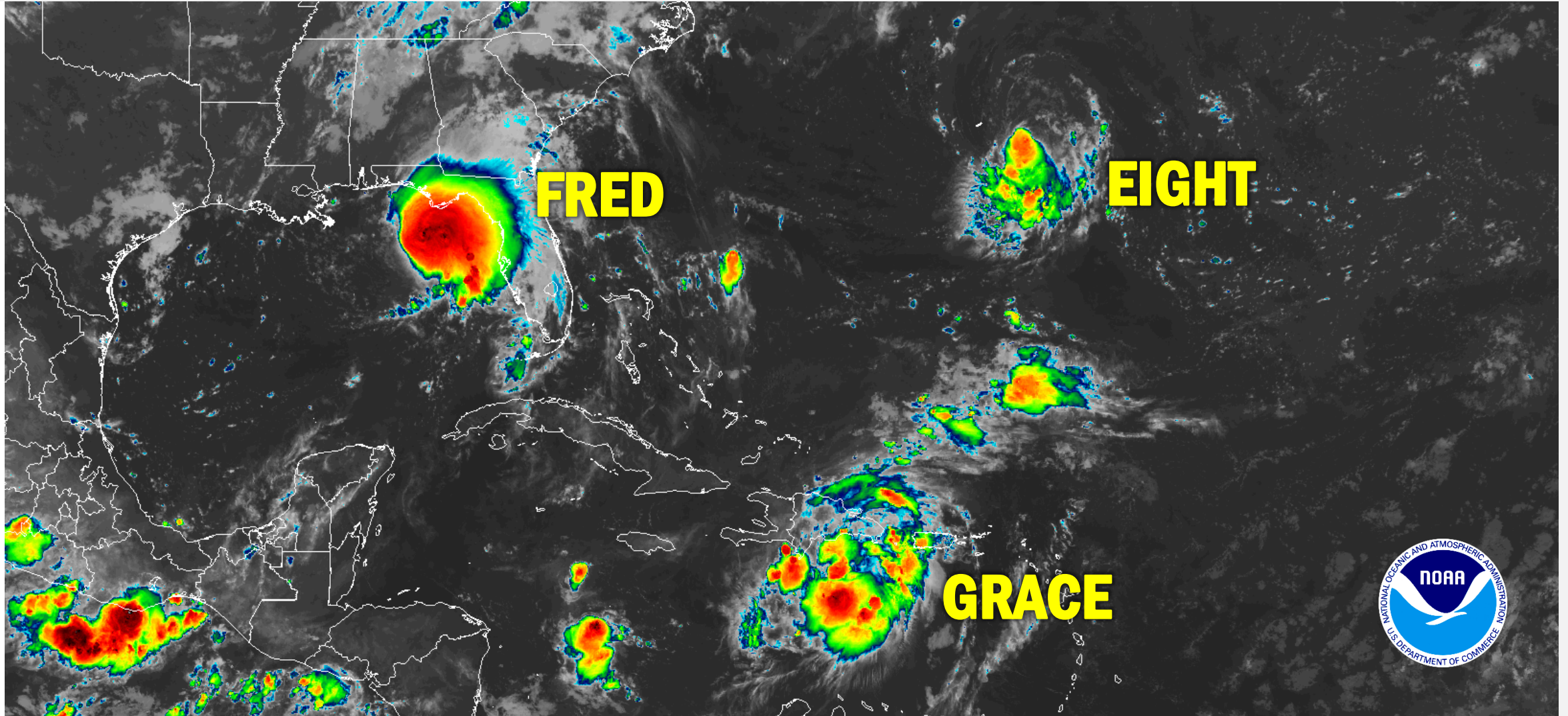


FEMA

National Watch Center

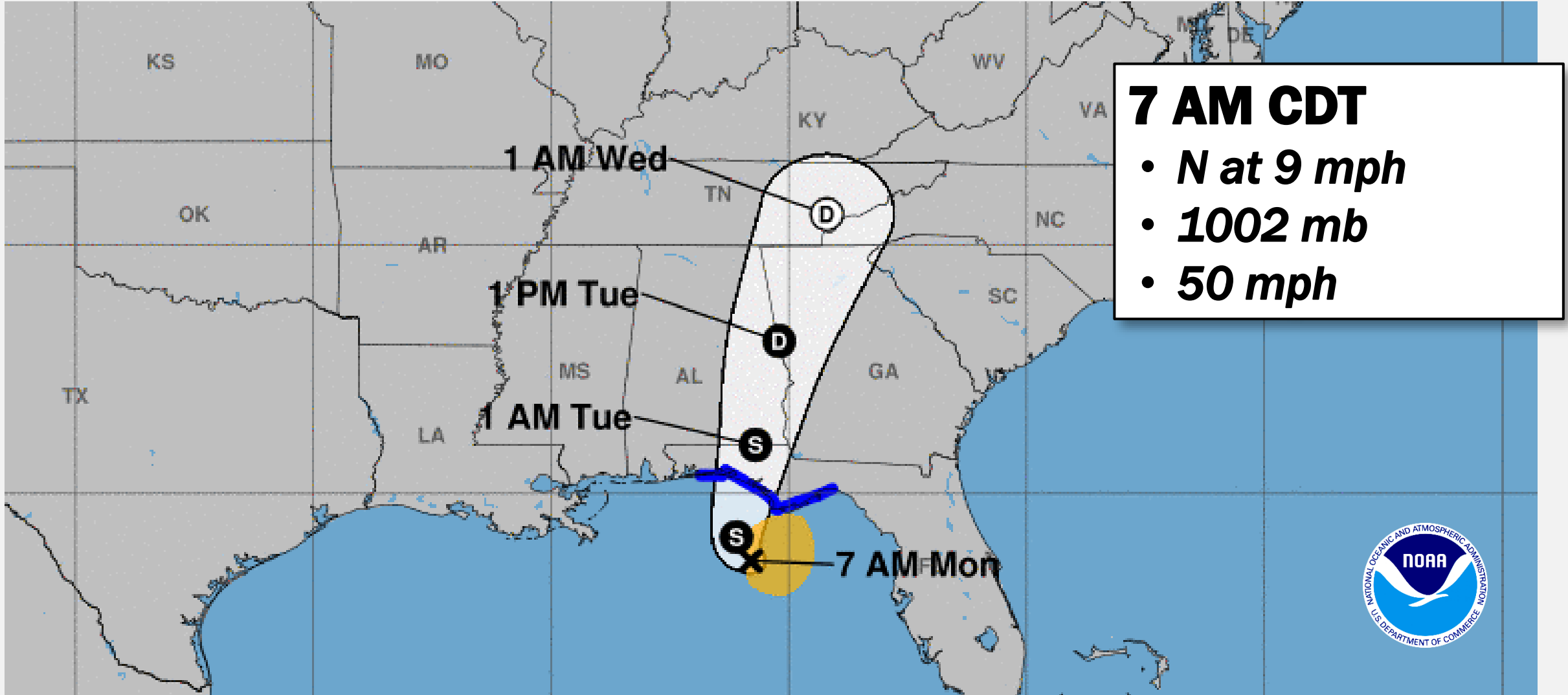
# Atlantic Overview

## SATELLITE LOOP



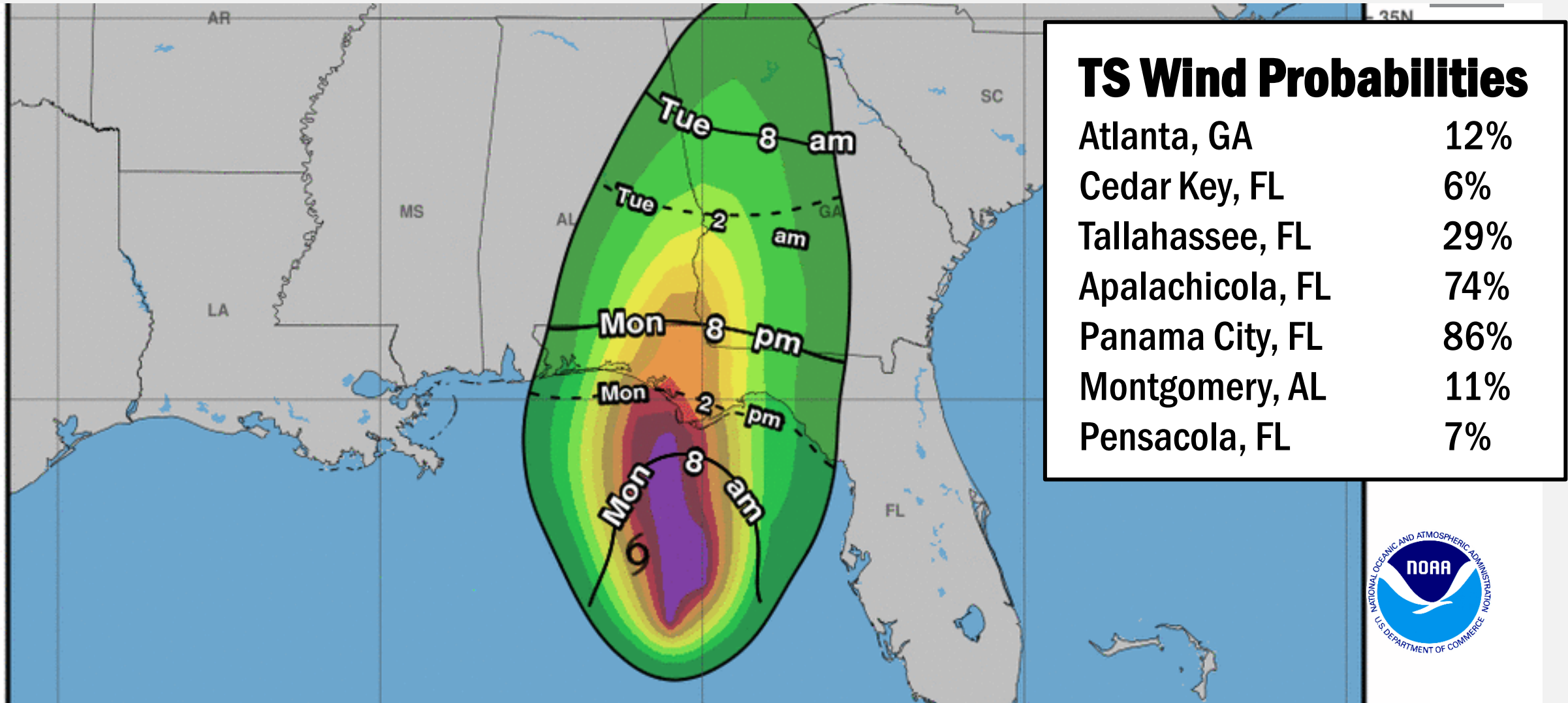
# Tropical Storm Fred

## FORECAST TRACK



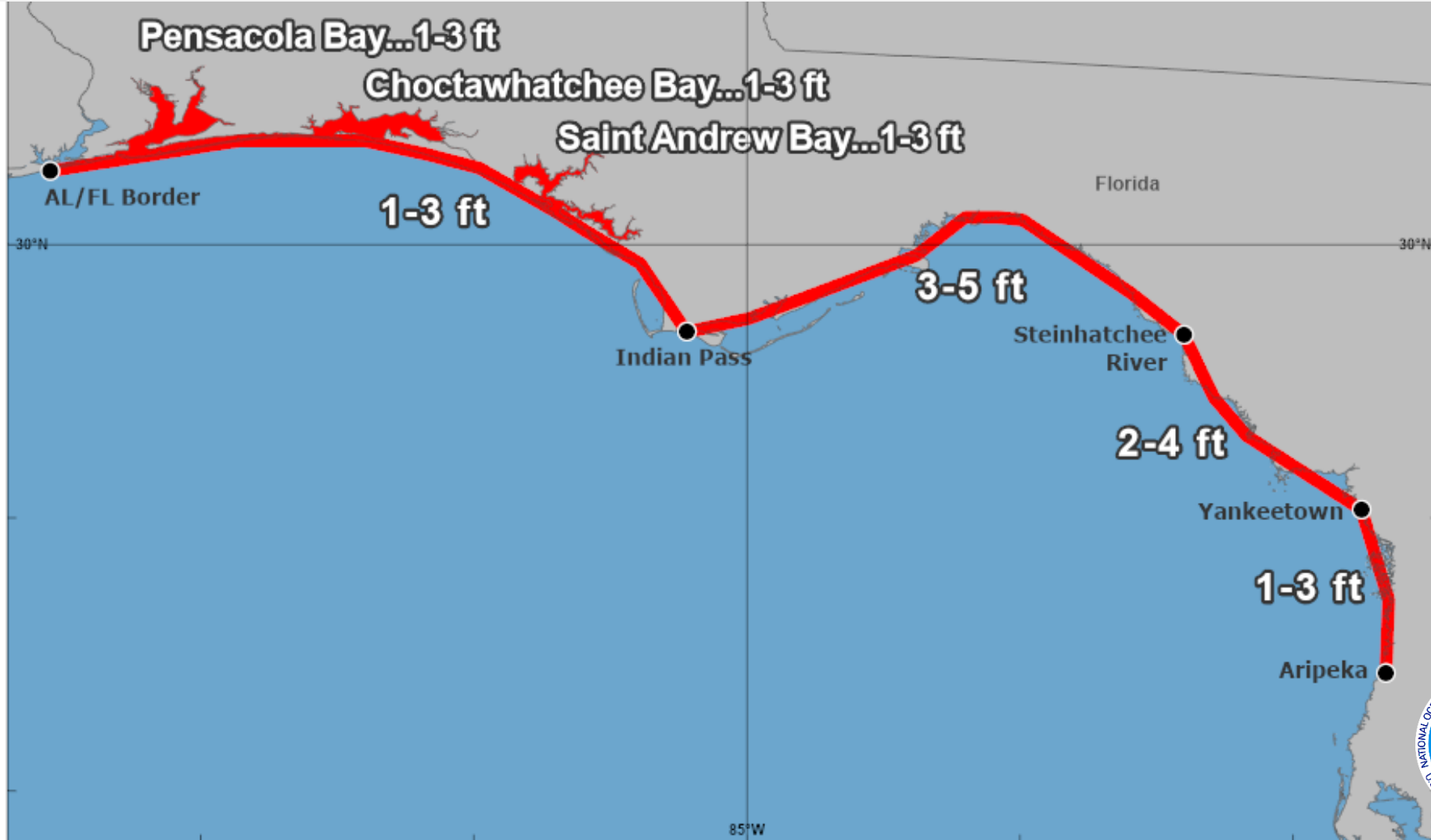
# Tropical Storm Fred

## MOST LIKELY ARRIVAL OF TS WINDS



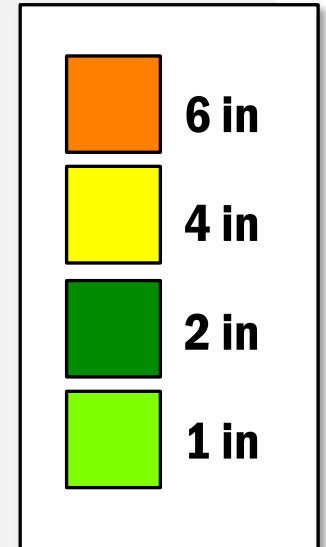
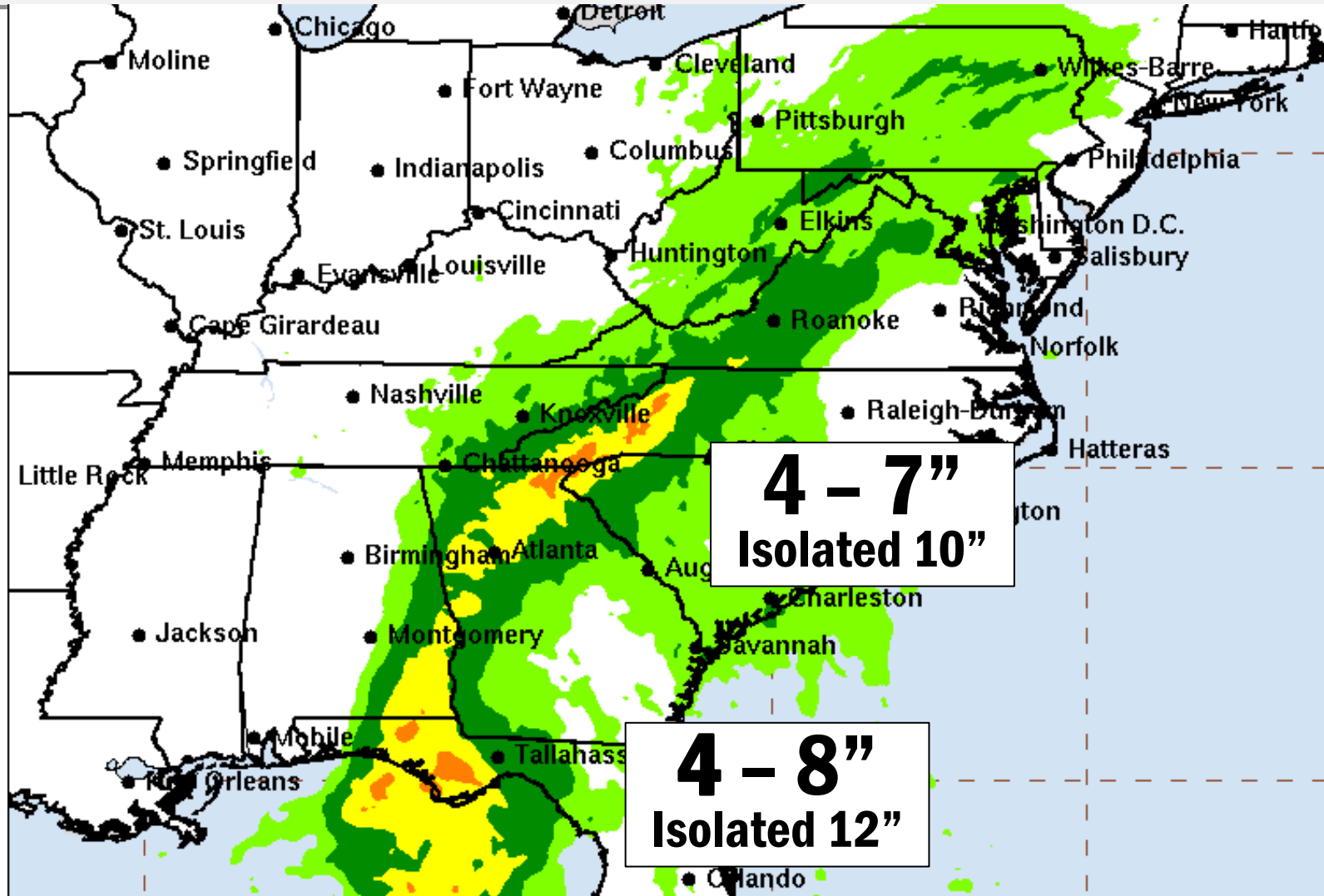
# Tropical Storm Fred

## PEAK STORM SURGE FORECAST



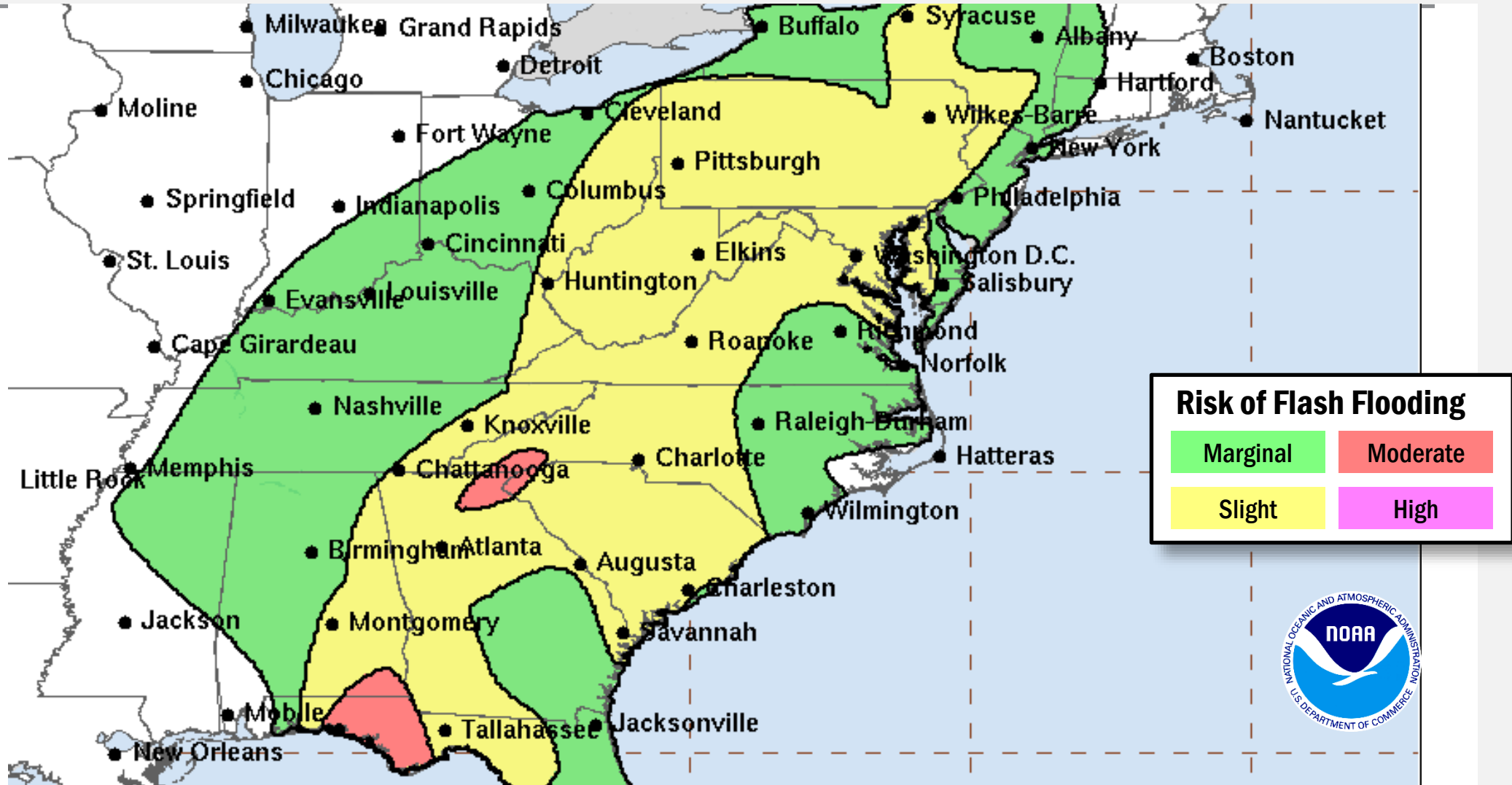
# Tropical Storm Fred

## 3 DAY RAINFALL

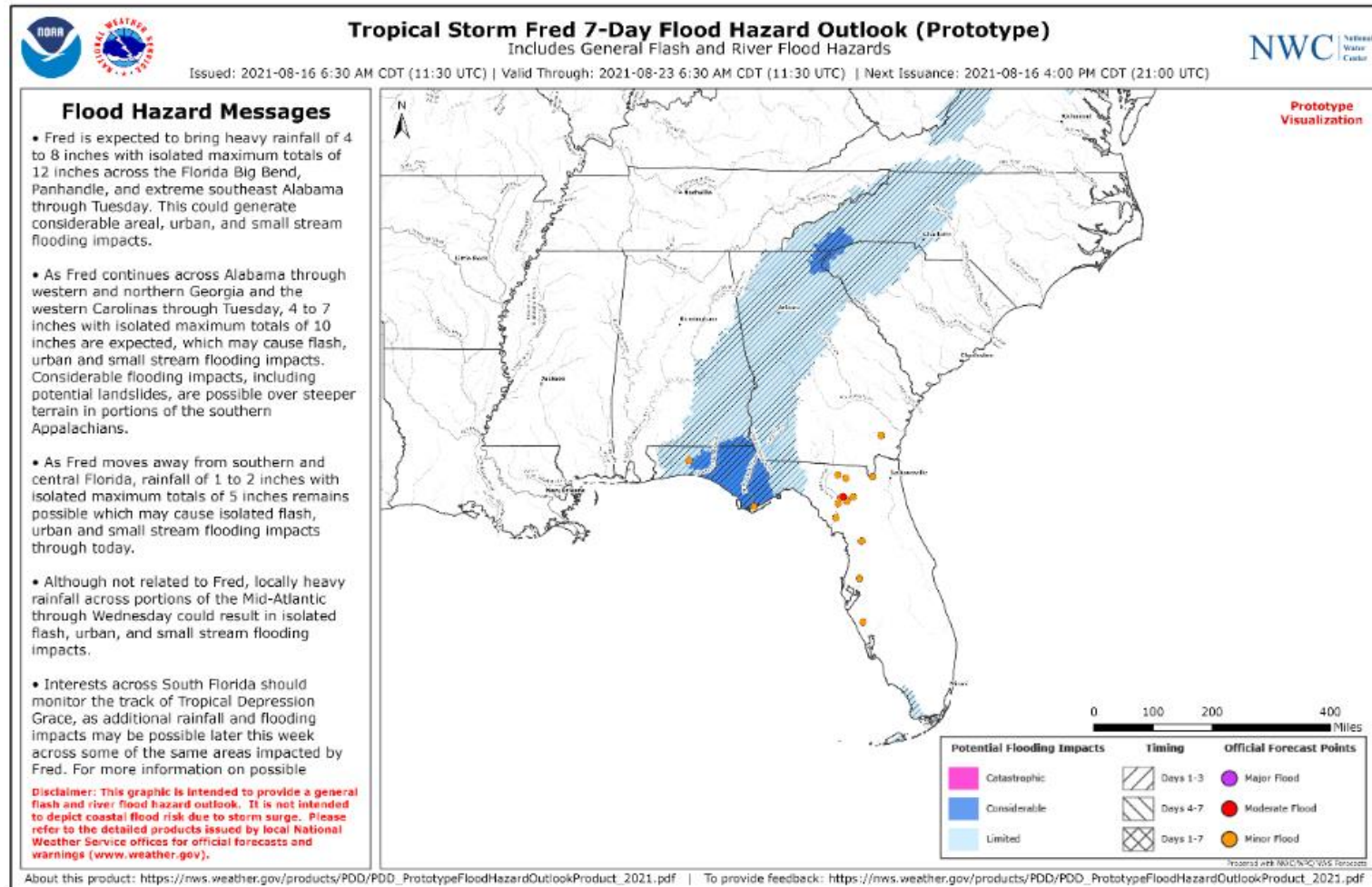


# Tropical Storm Fred

## FLASH FLOOD RISK



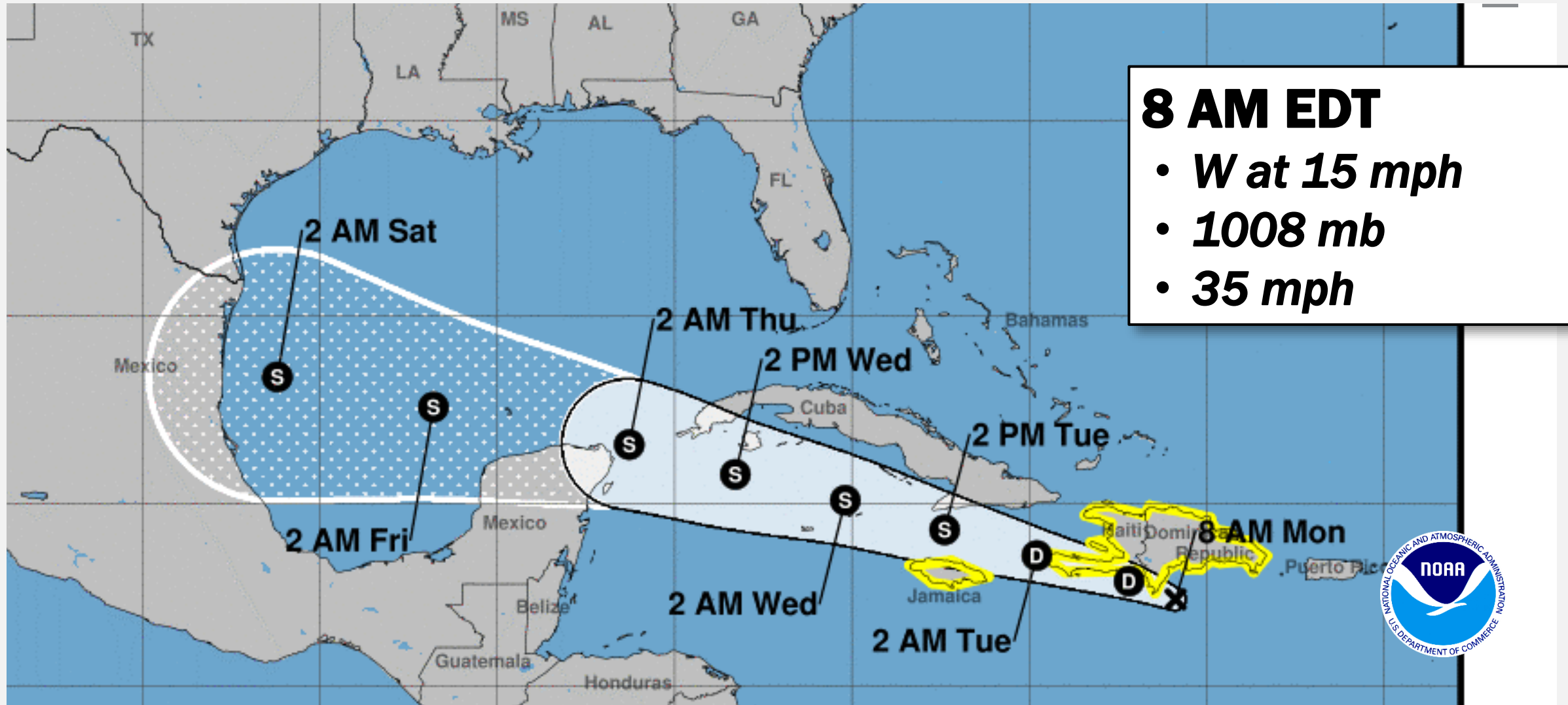
# Flood Hazard Outlook (Prototype)



FEMA

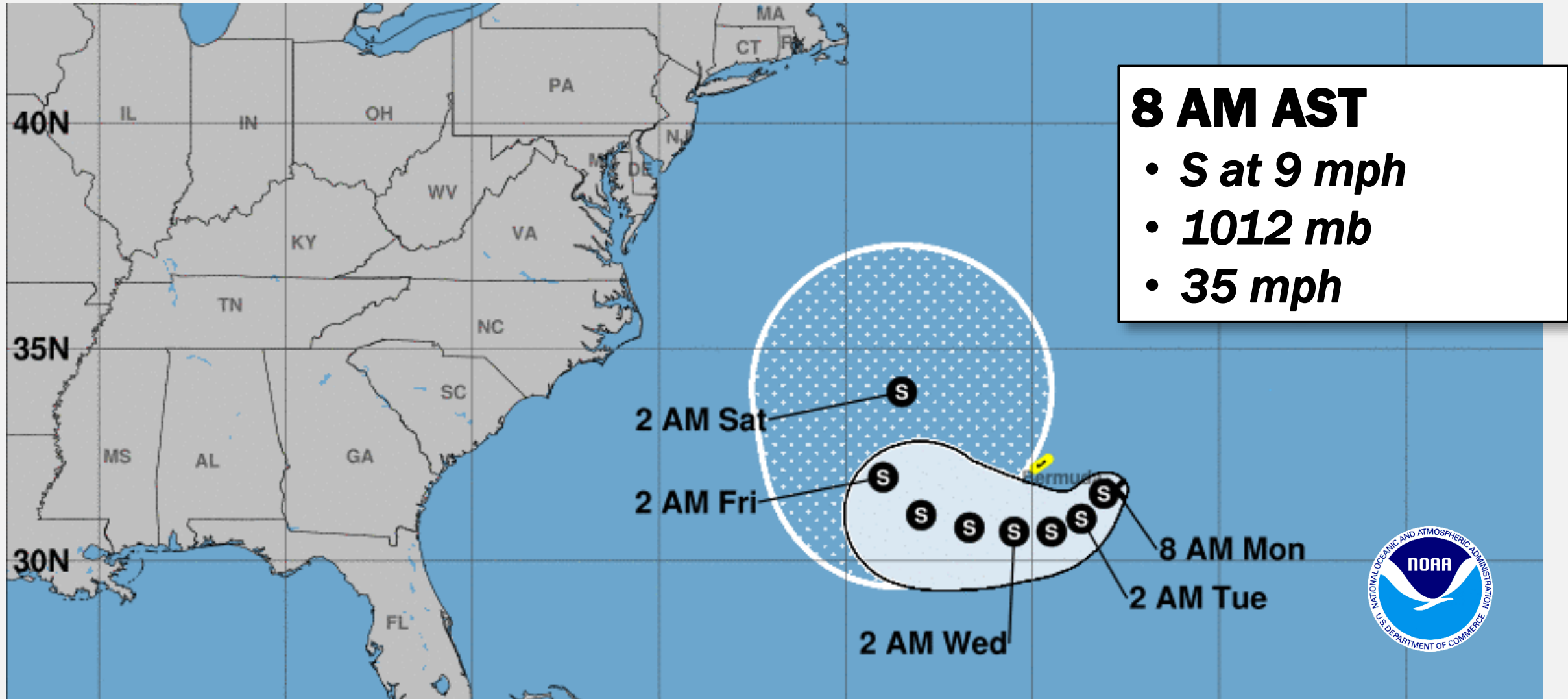
# Tropical Depression Grace

## FORECAST TRACK



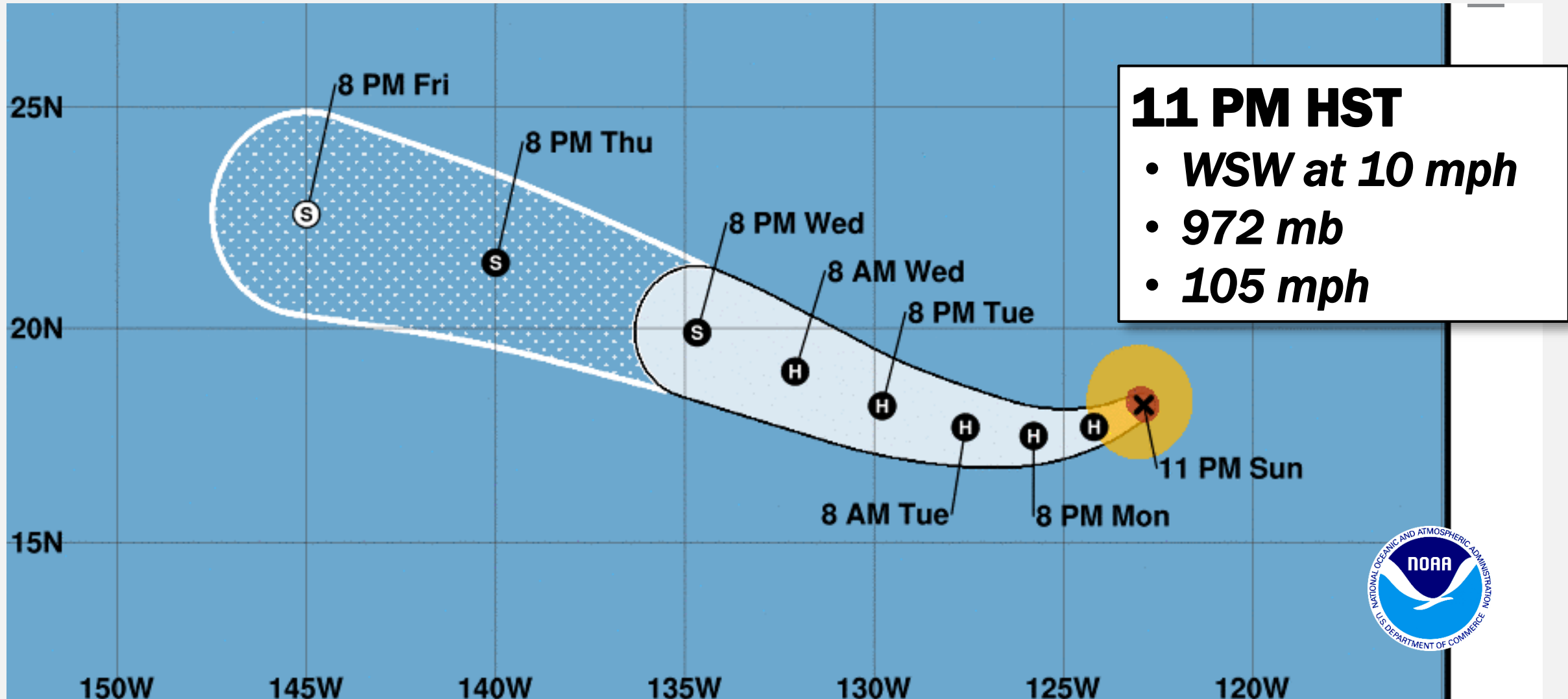
# Tropical Depression Eight

## FORECAST TRACK



# Hurricane Linda

## FORECAST TRACK

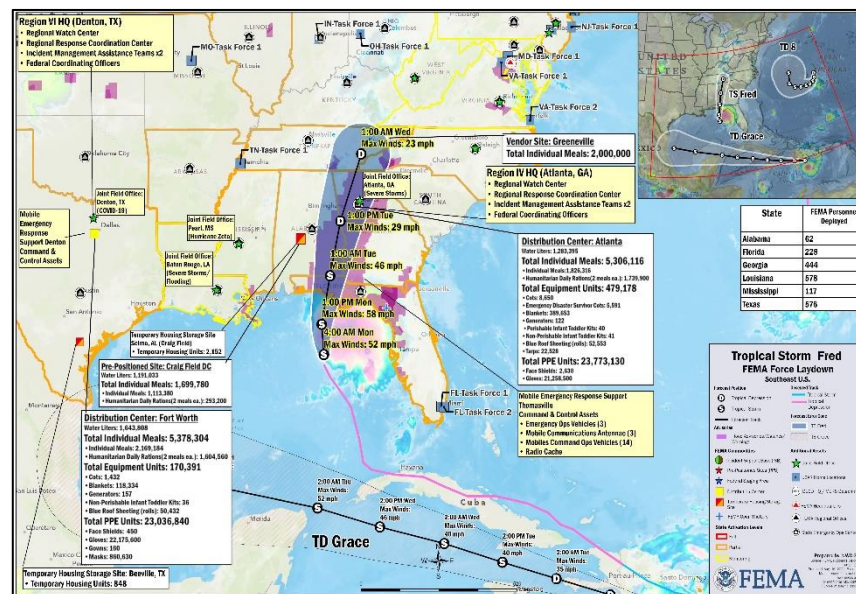


# Tropical Storm Fred - Coordination

**Situation:** The greatest potential for heavy rainfall and flooding impacts are along the Florida Panhandle into southeastern Alabama. Impacts anticipated to be within state, local, tribal, and territory capabilities.

## State Preparations

- FL EOC at Partial Activation (TC Fred)
- Governor declared State of Emergency for 23 counties; FL National Guard Activated
- FDEM conducting twice daily discussions with NHC, local, and SERT partners
- No mandatory evacuations planned, but some voluntary evacuations in effect for low lying areas and barrier islands; shelters are identified and on standby
- Multiple counties with school and Govt facility closings in Florida and Alabama
- Sandbagging operations ongoing in multiple counties
- Impacts expected to be within local and state capabilities



## FEMA Preparations

- Region IV RWC at Enhanced Watch (day shift only 7:00 a.m.-7:00 p.m.)
  - RRCC rostered, on alerted and placed on standby
  - IMAT-1/IMAT-2 are Available
  - Response LNO and FIT members are in the Tallahassee area
  - Request for FEMA assistance is not anticipated
- FEMA HQ
  - NWC coordinating with Regions, NHC, and National Water Center
  - NRCC at Level III (COVID-19)
  - National IMAT Blue to support Region IV if needed
  - DEC: MERS assets identified/deployable; Mobile IOF ready to support IMAT deployment
  - Logistics:
    - Pre-positioned 1.4M meals and 1.1M water at Craig Field
  - US&R: IST rostered on 2hr PTDO
  - Operations: Vaccination/Ambulance contracts activated; 20 ambulances in MO, 50 ambulances/paramedics in LA
  - FOD: FCOs identified for each state in RIV



FEMA

# Tropical Depression Grace – Coordination

**Situation:** On the forecast track, the center of Grace will move over Hispaniola later today and be near or over Cuba on Tuesday. Grace is causing heavy rain in Puerto Rico.

## Lifeline Impacts

### Food, Water, and Shelter:

- No shelters anticipated to open; but 344 shelters on standby

### Health and Medical:

- Hospitals have adequate back up power, water, oxygen, and beds
- USVI: COVID operations have taxed hospitals, any damaged hospitals could create limitations
- PR: vaccination sites are closed

### Transportation:

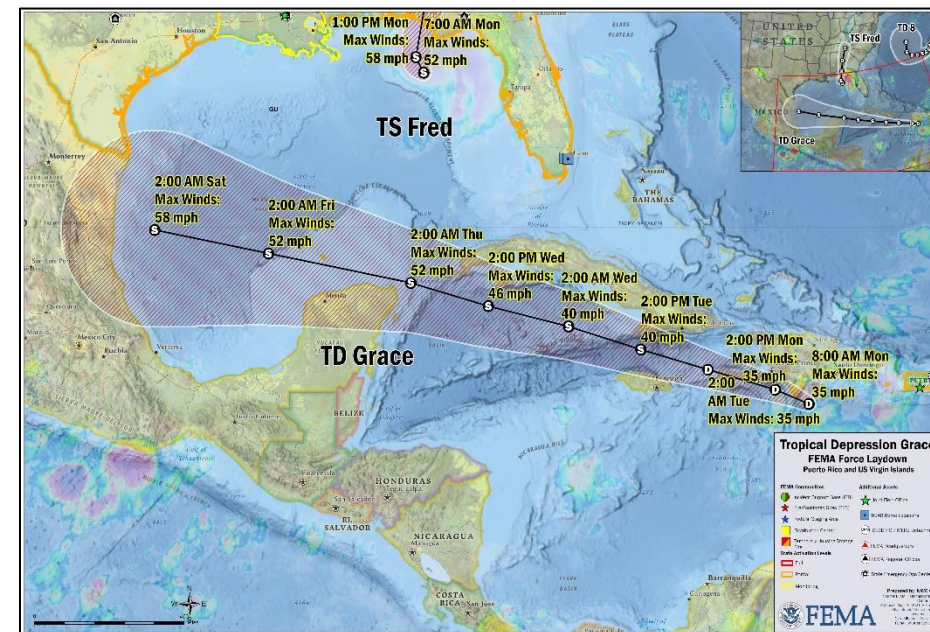
- USVI: ports open to all traffic; Port Condition Readiness Four
- PR: Ports at ZULU (closed), except San Juan which is at Port Condition Readiness Four

### State Coordination

- PR EOC at Partial Activation (TC Grace, COVID-19 and earthquake recovery)
  - Anticipated PREMB zones to activate
- USVI EOC at Full Activation (TC Grace and COVID-19)
- IOFs activated in St. Croix, St. Thomas, and Nestle
- PR CGS activated 62 of 70 EOCs
- LUMA Utility Crews on standby for all Service Regions
- Impacts expected to be within local and state capabilities

## FEMA Coordination

- Region II
  - RWC at Enhanced Watch
  - RRCC at Level III, day shift, with select ESFs and DCE
  - IMAT and IMAT collateral deployed to USVI
  - MERS assets deployed to PR and USVI
  - Staging Management Team (SMT) deployed to PR
  - FEMA force packages (command, advisory, and liaison staff) deployed to PR/USVI
  - ESFs #3, 8, 12, 14, and DCE deployed forward elements to PR/USVI
- FEMA HQ
  - NWC coordinating with Region II, NHC and National Water Center
  - NRCC at Level III (COVID-19)



FEMA

National Watch Center

# Earthquake – Haiti

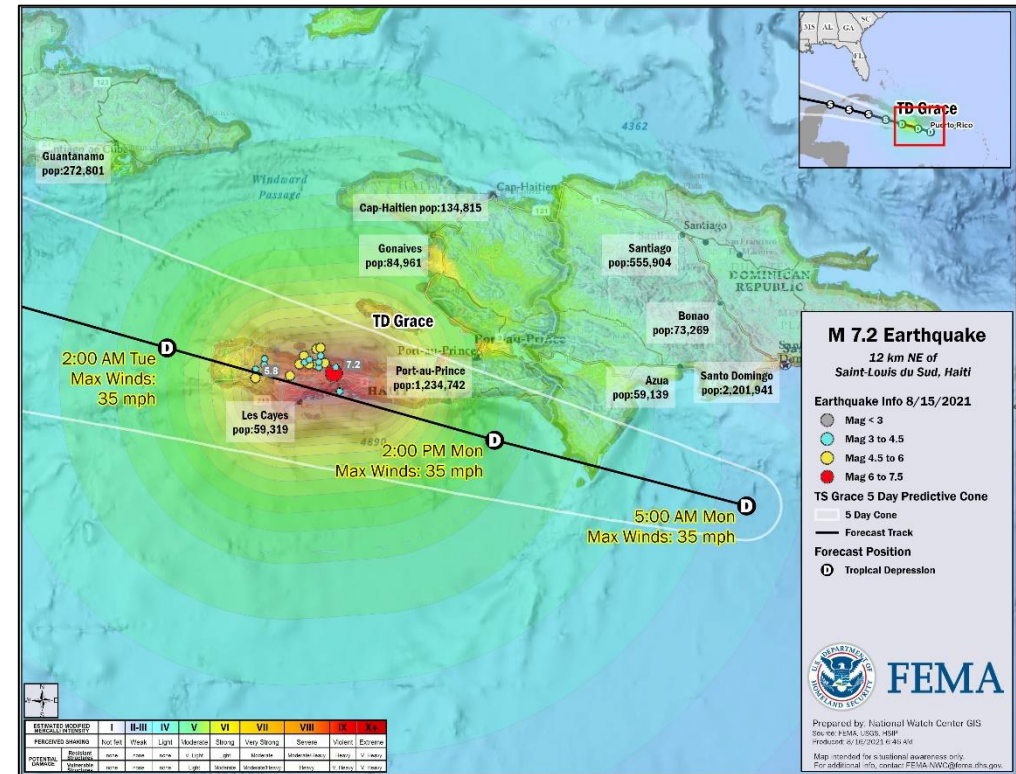
**Situation:** Magnitude 7.2 earthquake occurred on August 14, 7 miles NE of Saint-Louis du Sud, Haiti (pop. 59k). Numerous aftershocks occurred. Tropical Depression Grace may impact Haiti, rain could lead to flash and urban flooding and possible mudslides.

## **Impacts:**

- Official reports of 743 fatalities, 2,800 injuries, 7,369 homes destroyed, 4,852 homes damaged (media reports 1,297 fatalities, 5,700 injuries)
- Initial assessments of over 700 buildings collapsed, including hospitals and schools; damage to infrastructure
- Biggest shortfalls are medical assistance, water, and sanitation
- Haiti is requesting tents and plastic sheeting for sheltering, and assistance with urgent care, distribution of essential products and support for displaced families
- Haitian Prime Minister declared a one-month State of Emergency

## **FEMA/Federal Response:**

- POTUS authorized immediate response and named a coordinator for relief efforts
- USCG deployed helicopters
- FEMA NWC is monitoring
- USAID
  - USAID/BHA activated Disaster Response Team (DART)
  - US&R: US&R USA-1 (medium team with 57 personnel and 4 canines from VA-TF1) deployed August 15
  - US&R USA-2 (medium team with 57 personnel) deploying

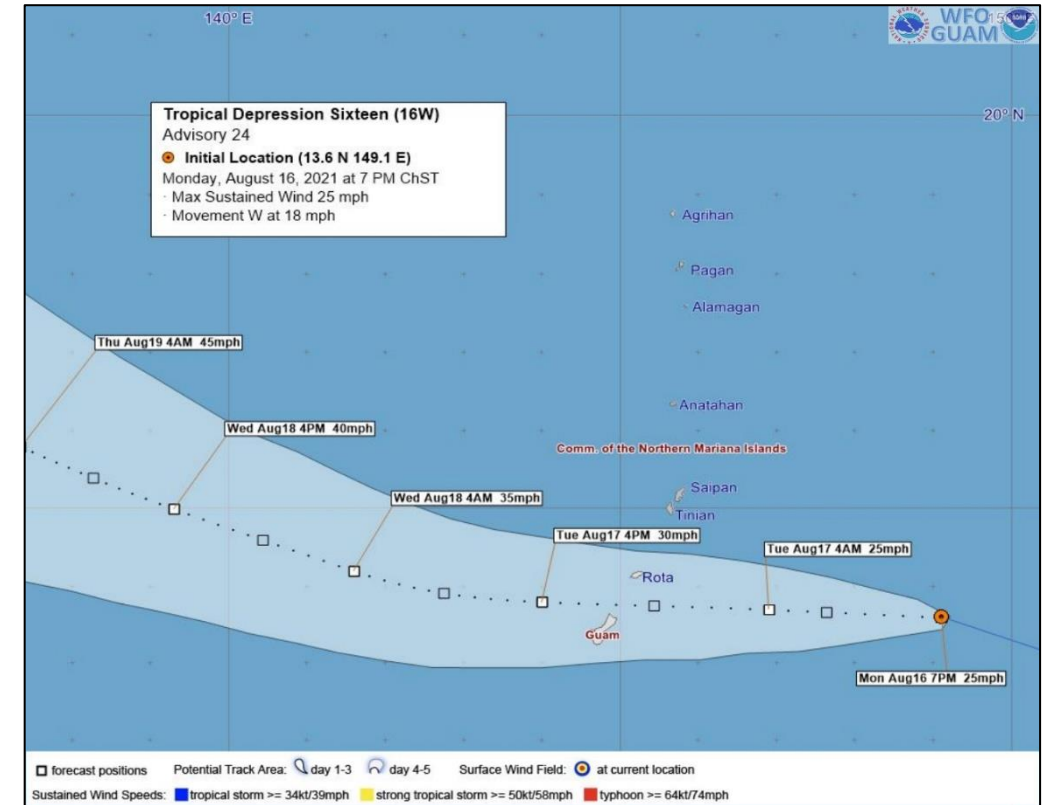


**FEMA**

# Tropical Depression 16W– Western Pacific

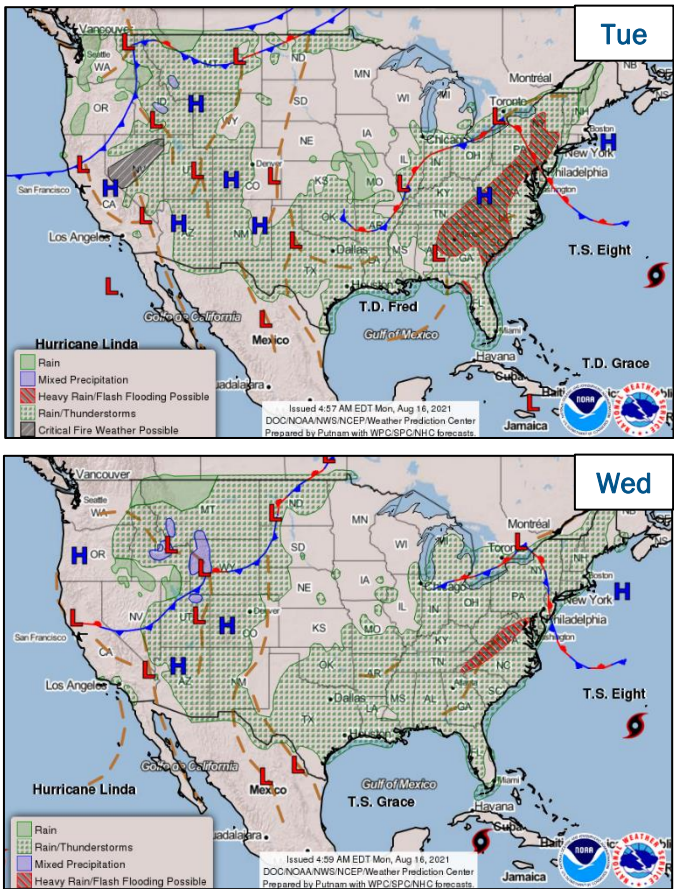
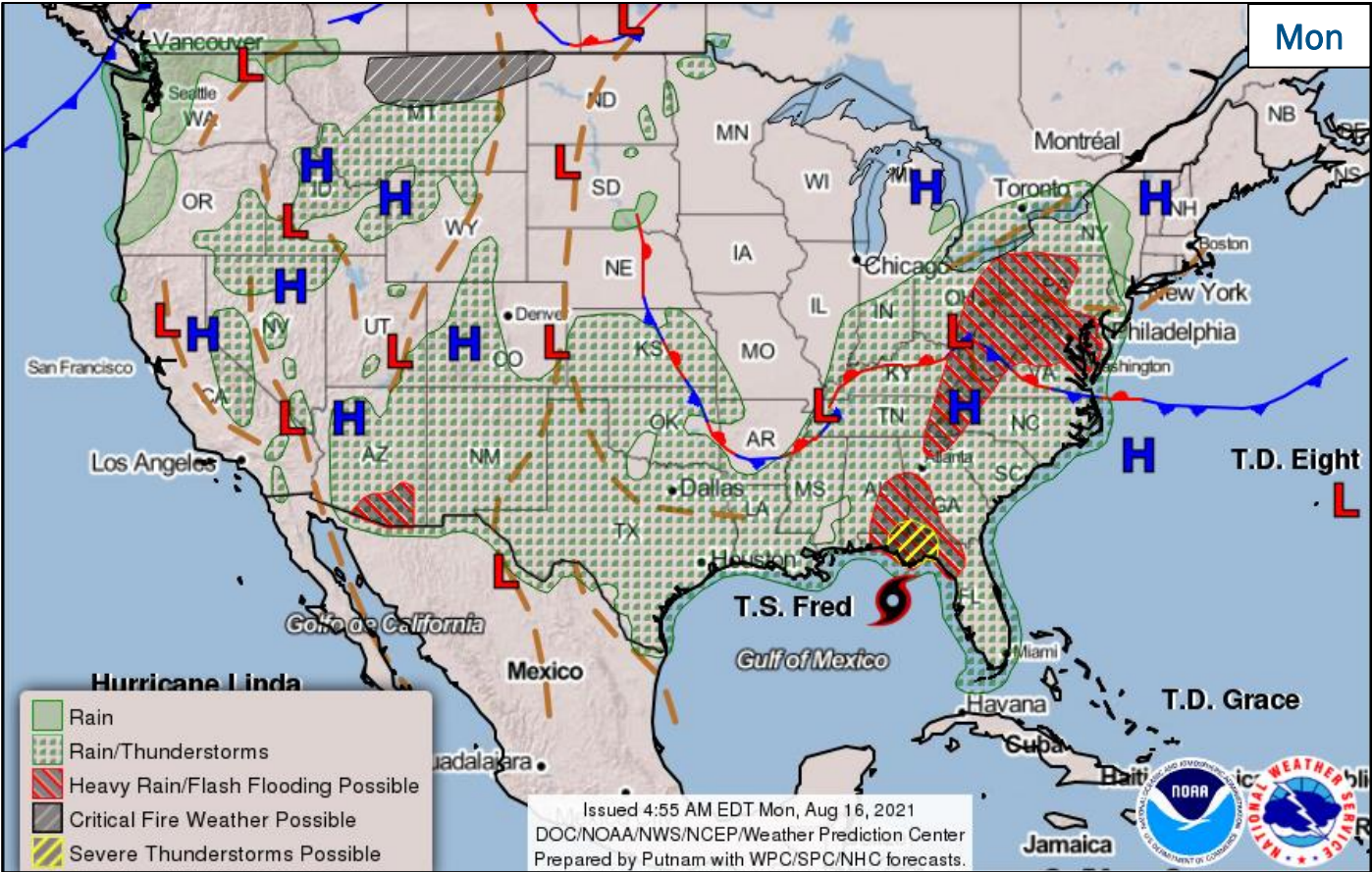
## Tropical Depression 16W (Advisory #24 of 4:00 a.m. ET)

- 290 miles E of Guam
- Moving W at 18 mph
- Maximum sustained winds 25 mph
- Tropical storm force winds extend 90 miles
- Expected to maintain a weakened state until it 16W passes west of the Marianas



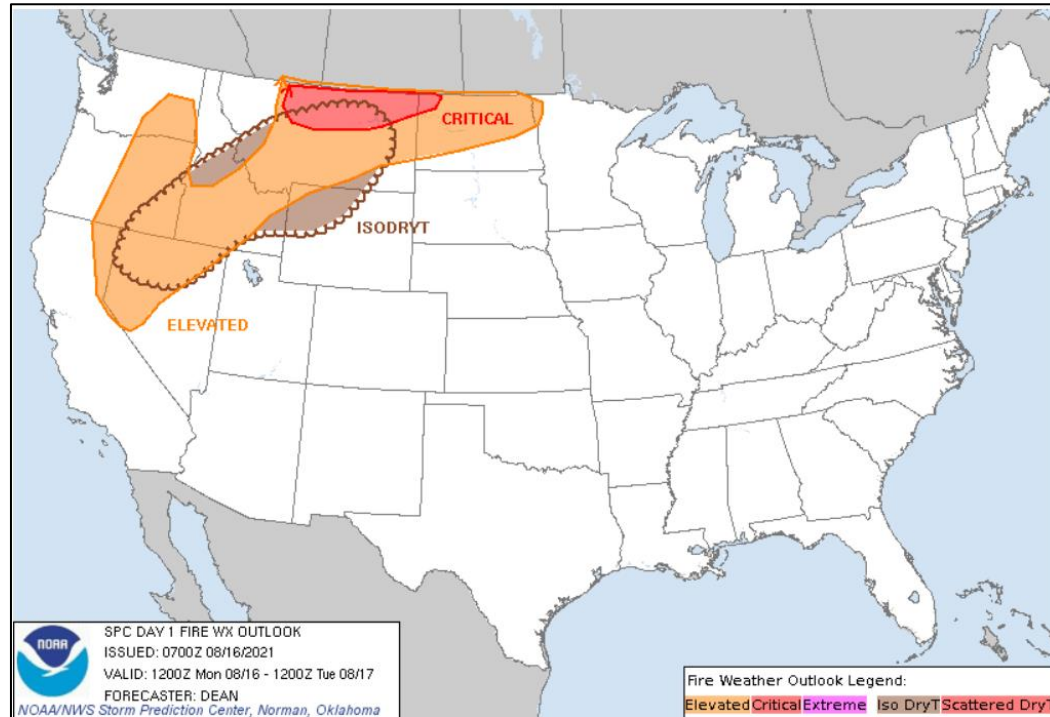
FEMA

# National Weather Forecast

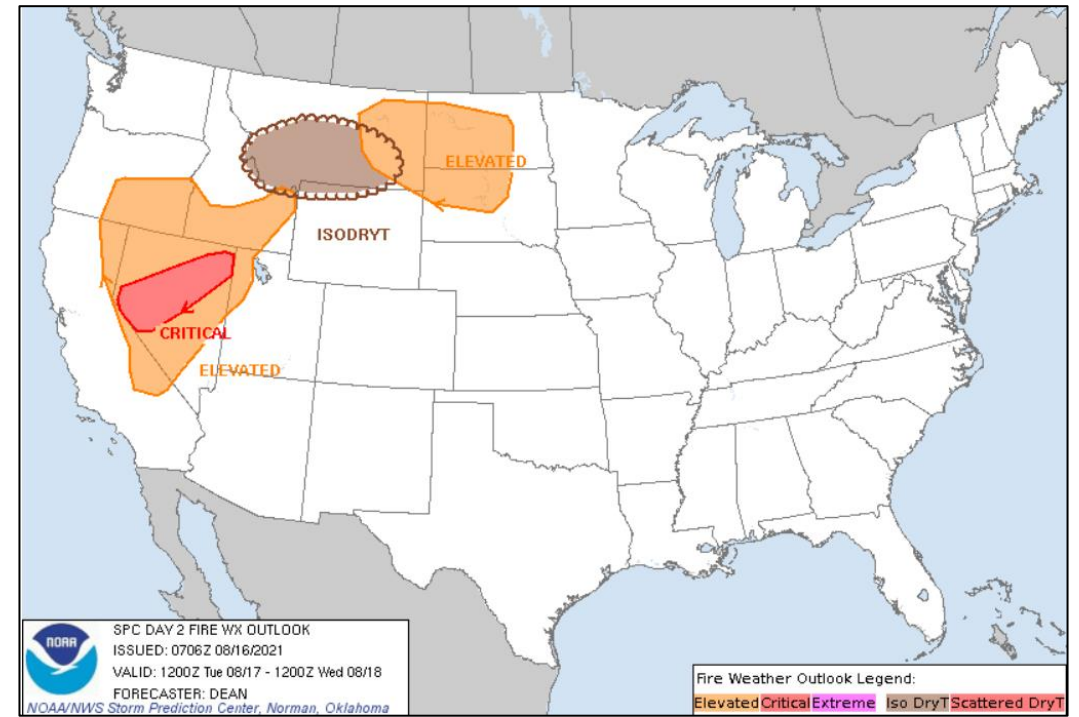


FEMA

# Fire Weather Outlook



Today



Tomorrow



FEMA

National Watch Center

# Patton Meadow Fire – Oregon

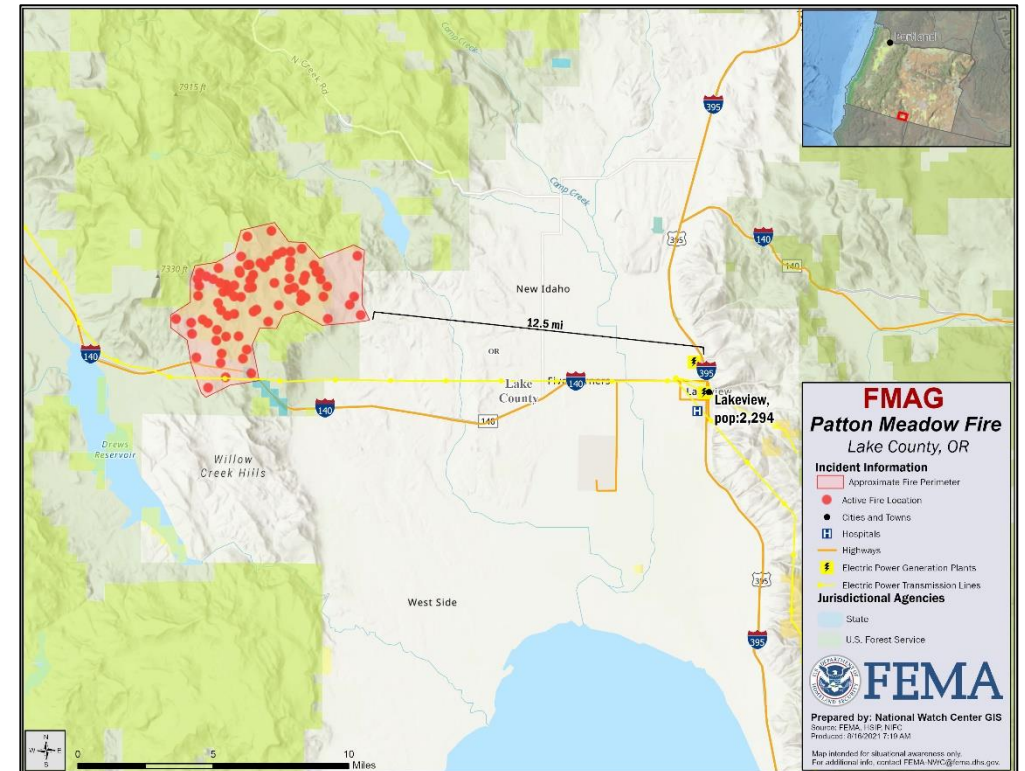
Fire Name (County, ST)	FMAG #	Acres Burned	Percent Contained	Evacuations	Structures (Homes / Other)			Fatalities / Injuries
					Threatened	Damaged	Destroyed	
Patton Meadow (Lake, OR)	XXXX-FM-OR	5,400	15%	M: 246 homes	H: 246	H: 0	H: 0	0 / 0
				V: 125 homes	O: 0	O: 4	O: 0	

## Situation:

- The fire began August 12 and is burning on federal, state, and private land in and around the community of Lake View (pop. 2,313)
- Threatening 246 homes (185 are primary, 61 are secondary homes)
- Also threatening Pacific Power and Surprise Valley power companies' high tension power lines, cultural resources in the Klamath Basin, critical communications equipment on Grizzly Peak including radio repeaters, law enforcement networks, Verizon cell tower, and other emergency radio communications
- Mandatory and voluntary evacuations are in effect

## Response:

- OR EOC at Partial Activation (Flooding and COVID-19)
- Region X / Bothell MOC and NWC are monitoring
- FMAG approved August 16



**FEMA**

National Watch Center

# Muckamuck Fire – Washington

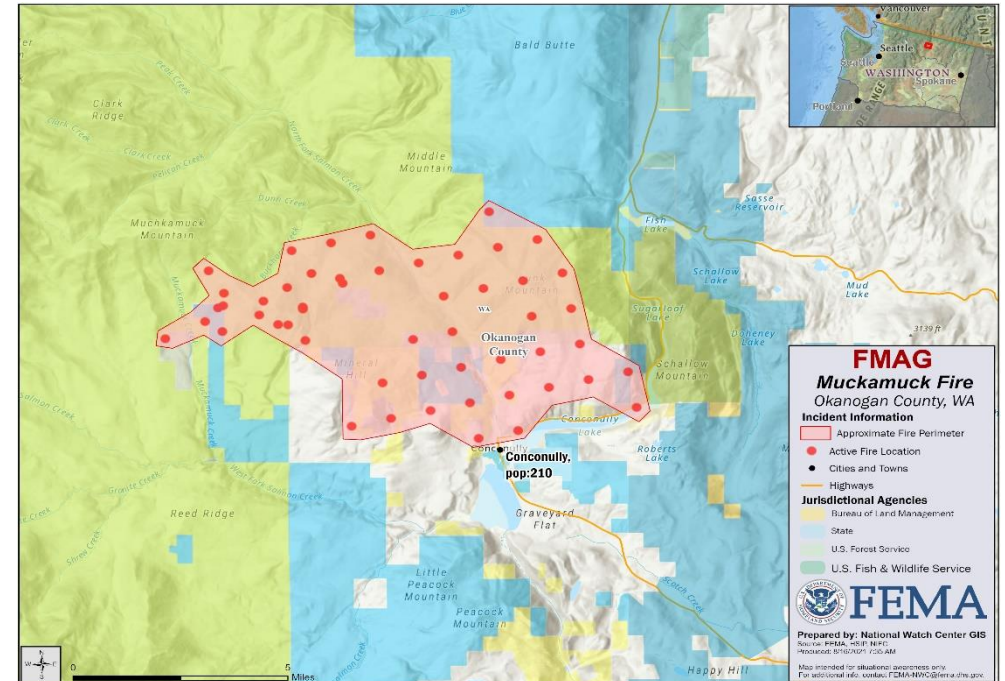
Fire Name (County, ST)	FMAG #	Acres Burned	Percent Contained	Evacuations	Structures (Homes / Other)			Fatalities / Injuries
					Threatened	Damaged	Destroyed	
Muckamuck Fire (Okanogan, WA)	XXXX-FM-WA	7,000	5%	M: 174 homes	H: 174	H: 0	H: 0	0 / 0
				V: 0	O: 0	O: 0	O: 0	

## Situation:

- The fire began August 14 and is burning on federal, state, and private land in and around the town of Conconully (pop. 400)
- Threatening the entire town of 174 homes (all primary)
- Also threatening overhead and underground power lines owned by the Okanogan Public Utility District distribution center and other infrastructure
- Mandatory evacuations are in effect
- Shelter open for residents and animals
- Only one egress route available out of the town; the other route is cut off by the fire

## Response:

- WA EOC at Partial Activation (Wildfires and COVID-19)
- Region X / Bothell MOC and NWC are monitoring
- FMAG approved August 16

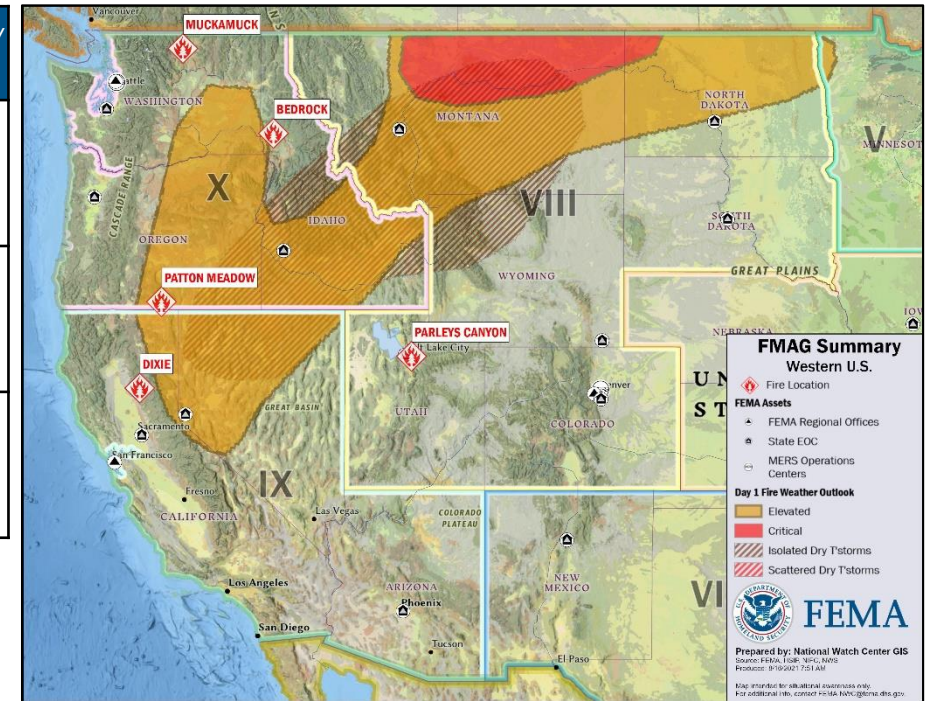


**FEMA**

National Watch Center

# Wildfire Summary

Fire Name (County, ST)	FMAG #	Acres Burned	Percent Contained	Evacuations	Structures (Homes / Other)			Fatalities / Injuries
					Threatened	Damaged	Destroyed	
Dixie (Plumas, CA)	5400-FM-CA	570,211 (+17,622)	31%	M: 29,033 (+337)	H: 14,838	H: 50 (+5)	H: 641 (+40)	0 / 3
				V: 0	O: 118	O: 30 (+1)	O: 532 (+20)	
Bedrock (Nez Perce, ID)	5407-FM-ID	10,850 (+1,845)	20% (+20)	M: 300	H: 200	H: 0	H: 2 (+2)	0 / 0
				V: 0	O: 50	O: 0	O: 19 (+4)	
Parleys Canyon (Salt Lake and Summit, UT)	5408-FM-UT	619 (-1,881)	10% (+10)	M: 10,000	H: 2,000 (-6,000)	H: 0	H: 0	0 / 0
				V: 0	O: 0	O: 0	O: 0	



(Evacuations: M = Mandatory / V = Voluntary; Structures: H = Homes and Mixed Commercial/Residential / O = Non-residential Commercial/Other Minor Structures)



**FEMA**

National Watch Center

# Joint Preliminary Damage Assessments

Region	State / Location	Incidents	IA	Number of Counties		Start – End
			PA	Requested	Complete	
I	NH	Severe Storms and Flooding Jul 17-19	IA	0	0	N/A
			PA	3	1	8/4 – TBD
	VT	Severe Storms and Flooding Jul 29	IA	0	0	N/A
			PA	2	0	8/4 – TBD
	MA	Severe Storms and Flooding Jul 16-21	IA	0	0	N/A
			PA	5	0	8/10 – TBD
VII	NE	Severe Storms Jul 9-10	IA	0	0	N/A
			PA	15	13	7/27 – TBD
IX	CA	August Wildfires	IA	6	0	8/11 – TBD
			PA	6	0	8/11 – TBD
	AZ	Northern Monsoonal Flooding Jul 22-24	IA	0	0	N/A
			PA	3	0	8/16 – TBD



**FEMA**

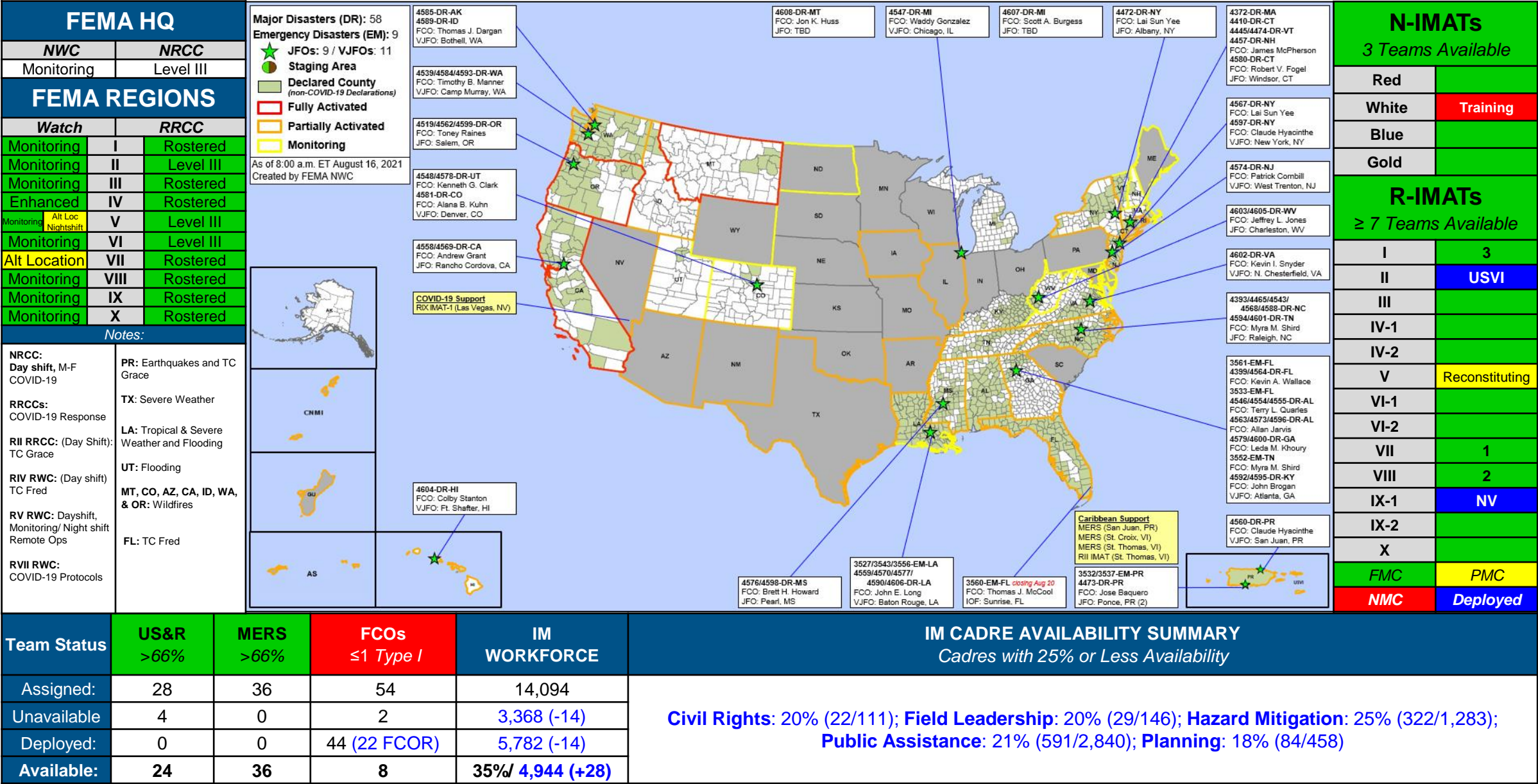
# Declaration Requests in Process – 2

State / Tribe / Territory – Incident Description	Type	IA	PA	HM	Requested
Fort Peck Assiniboiné & Sioux Tribes – Severe Storm, Straight-line Winds, and Flooding	DR	X		X	8/3
ND – Severe storms, Straight-line Winds, and Flooding	DR		X	X	8/9



**FEMA**

# FEMA Common Operating Picture





# FEMA

Helping people before, during, and after disasters.



*Scan to subscribe to this briefing.*