



# Communications Plan

FEMA-4558-4569-DR-CA

CP #10

May 04, 2021



**Cal OES**  
GOVERNOR'S OFFICE  
OF EMERGENCY SERVICES



**FEMA**

<b>FEMA ICS Form 205A Incident Telephone Communication Plan</b>	<b>FEMA Disaster Number:</b> FEMA-4558-DR	<b>2. Operational Period:</b> 05/05/2021 0700 PDT to 05/12/2021 0700 PDT
---	--	---

**3. Contact List**
**Incident Facilities/Contacts**

Incident Facilities	Facility Operational Hours	Phone Number	Additional Info
<p><b>Joint Field Office (JFO) - State</b> ,            11370 Peter A McCuen Blvd. ,            Mather ,            CA 95670</p> <p><b>USNG: 10S FH 48718 70782</b></p>	Monday: 0700 PDT - 1800 PDT Tuesday: 0700 PDT - 1800 PDT Wednesday: 0700 PDT - 1800 PDT Thursday: 0700 PDT - 1800 PDT Friday: 0700 PDT - 1800 PDT Saturday: <b>Closed</b> Sunday: <b>Closed</b>	<p><b>Ryan Becze (S)</b></p> <p>Phone: 916-761-4491</p>	
<p><b>FEMA Region IX Office</b> ,            Region Office ,            1111 Broadway, Suite 1200 ,            Oakland ,            CA 94607</p> <p><b>USNG: 10S EG 64068 84172</b></p>	Monday: 0800 PDT - 1700 PDT Tuesday: 0800 PDT - 1700 PDT Wednesday: 0800 PDT - 1700 PDT Thursday: 0800 PDT - 1700 PDT Friday: 0800 PDT - 1700 PDT	<p>Phone: 510-627-7100</p>	
<p><b>Butte County</b> ,            DROC ,            900 Fortress Street, Suite 200 ,            Chico ,            CA 95973</p> <p><b>USNG: 10S EK 98247 06001</b></p>	Monday: 0800 PDT - 1730 PDT Tuesday: 0800 PDT - 1730 PDT Wednesday: 0800 PDT - 1730 PDT Thursday: 0800 PDT - 1730 PDT Friday: 0800 PDT - 1730 PDT Saturday: 0800 PDT - 0730 PDT Sunday: <b>Closed</b>	<p><b>Cole Glenwright (S)</b></p> <p>Phone: 916-425-0302</p>	
<p><b>Fresno County</b> ,            DROC ,            3640 E Ashlan Avenue ,            Fresno ,            CA 93726</p> <p><b>USNG: 11S KA 53413 75593</b></p>	Monday: 0800 PDT - 1730 PDT Tuesday: 0800 PDT - 1730 PDT Wednesday: 0800 PDT - 1730 PDT Thursday: 0800 PDT - 1730 PDT Friday: 0800 PDT - 1730 PDT Saturday: 0800 PDT - 1730 PDT Sunday: <b>Closed</b>	<p><b>Dena Wilson (S)</b></p> <p>Phone: 916-704-8791</p>	

<p><b>Napa (Virtual DROC) ,</b> DROC , Napa , CA</p>	<p>Monday: 0800 PDT - 1730 PDT Tuesday: 0800 PDT - 1730 PDT Wednesday: 0800 PDT - 1730 PDT Thursday: 0800 PDT - 1730 PDT Friday: 0800 PDT - 1730 PDT Saturday: 0800 PDT - 1730 PDT Sunday: <b>Closed</b></p>	<p><b>Amber Lane (S)</b> Phone: 916-823-6355</p>	
<p><b>Monterey County ,</b> DROC , 1 Lower Ragsdale Drive, Building 1, Suite 130 , Monterey , CA 93940</p> <p><b>USNG: 10S FF 05767 48551</b></p>	<p>Monday: 0800 PDT - 1730 PDT Tuesday: 0800 PDT - 1730 PDT Wednesday: 0800 PDT - 1730 PDT Thursday: 0800 PDT - 1730 PDT Friday: 0800 PDT - 1730 PDT Saturday: 0800 PDT - 1730 PDT Sunday: <b>Closed</b></p>	<p><b>Kendra Bowyer (S)</b> Phone: 916-214-2043</p>	
<p><b>DC - Tracy ,</b> Distribution Center , 1547 E Grant Line Road , Tracy , California 95304</p> <p><b>USNG: 10S FG 40751 79750</b></p>	<p>Monday: 0900 PDT - 1700 PDT Tuesday: 0900 PDT - 1700 PDT Wednesday: 0900 PDT - 1700 PDT Thursday: 0900 PDT - 1700 PDT Friday: 0900 PDT - 1700 PDT Saturday: <b>Closed</b> Sunday: <b>Closed</b></p>	<p><b>Randall Pape (F)</b> Phone: 209-395-7827</p>	
<p><b>Sharpe Depot ,</b> ISB , 700 Roth Road , French Camp , California 95231</p> <p><b>USNG: 10S FG 52286 91207</b></p>	<p>Monday: 0900 PDT - 1700 PDT Tuesday: 0900 PDT - 1700 PDT Wednesday: 0900 PDT - 1700 PDT Thursday: 0900 PDT - 1700 PDT Friday: 0900 PDT - 1700 PDT Saturday: <b>Closed</b> Sunday: <b>Closed</b></p>	<p><b>Gary Melvin (F)</b> Phone: 256-343-6609</p>	

<b>Paradise Long Term Recovery Office ,</b> Long Term Recovery Office , 7204 Skyway , Paradise , CA 95969  <b>USNG: 10S FK 18523 02698</b>	Monday:	0700 PDT - 1530 PDT	<b>Kenyatta Russell (F)</b>  Phone: 202-714-2735
	Tuesday:	0700 PDT - 1530 PDT	
	Wednesday:	0700 PDT - 1530 PDT	
	Thursday:	0700 PDT - 1530 PDT	
	Friday:	0700 PDT - 1530 PDT	
	Saturday:	<b>Closed</b>	
	Sunday:	<b>Closed</b>	
<b>Cal OES News Desk ,</b>			Phone: 916-800-3943
<b>FEMA News Desk ,</b>			Phone: 916-718-8540
<b>National Weather Service ,</b>			Phone: 801-524-7907
<b>Cal OES Information Technology Service Desk ,</b>			Phone: 916-845-8311
<b>Caltrans HQ Communication Center ,</b>			<b>HQ.Comm.Center@DOT.ca.gov</b> (After Hours) Phone: 916-653-3442

**Command**

Position	S t r a i t b e e	F E M A	O F A	Name	Phone	Work Email
State Coordinating Officer	X			Ryan Buras	916-845-8767	Ryan.Buras@CalOES.ca.gov
Federal Coordinating Officer		X		Willie Nunn	206-437-4403	willie.nunn@fema.dhs.gov
State Disaster Recovery Coordinator	X			Robert Troy	916-328-7581	Robert.Troy@CalOES.ca.gov
Deputy Federal Coordinating Officer		X		Andrew Grant	202-257-5303	andrew.grant@fema.dhs.gov
Acting Coastal Regional Administrator	X			Lee Dorey	916-203-9175	Lee.Dorey@CalOES.ca.gov
Deputy Southern Regional Administrator	X			Dan Weiss	562-795-2900	Dan.Weiss@CalOES.ca.gov
Inland Regional Administrator	X			Tom Graham	916-823-7360	Thomas.Graham@CalOES.ca.gov

**Interagency Recovery Coordination**

Position	S t r a i t b e e	F E M A	O F A	Name	Phone	Work Email
RSF Coordinator-Community Planning and Capacity Building (CPCB)		X		Cecelia Nyman	202-735-4570	cecelia.nyman@fema.dhs.gov
Interagency Recovery Coordination (IRC) Branch Director	X			Derek Lambeth	916-628-4407	Derek.Lambeth@CalOES.ca.gov
Interagency Recovery Coordination (IRC) Branch Director (Bldg E)		X		Tan Hoang	202-568-2037	tan.t.hoang@fema.dhs.gov
Deputy Interagency Recovery Coordination (IRC) Branch Director	X			Georges Merceron	916-247-8292	ContractorGeorges.Merceron@CalOES.ca.gov
Interagency Recovery Coordination (IRC) Support - MAX-TRAX Admin	X			Stephanie Wallace	916-947-4960	Stephanie.Wallace@CalOES.ca.gov
RSF Coordinator - Community Planning and Capacity Building (CPCB)	X			Megan Walton	916-247-6850	Megan.Walton@CalOES.ca.gov

RSF Coordinator - Natural and Cultural Resources (NCR)	X			Doug Ganey	916-947-1000	ContractorDoug.Ganey@CalOES.ca.gov
RSF Coordinator - Natural and Cultural Resources (NCR)	X			Patricia Nelson	916-823-1945	Patricia.Nelson@CalOES.ca.gov
California Natural Resources Agency (CNRA) (Remote)	X			Patrick Kemp	916-796-7328	Patrick.Kemp@resources.ca.gov
RSF Coordinator - Economic / Natural and Cultural Resources	X			Tom O'Sullivan	916-926-9872	Tom.O'Sullivan@CalOES.ca.gov
RSF Coordinator - Infrastructure Systems / Natural and Cultural Resources (NCR)	X			Michael Butier	916-328-7620	Michael.Butier@CalOES.ca.gov
RSF Coordinator - Natural and Cultural Resources		X		Sheri Elliott	202-279-1118	sheri.elliott@fema.dhs.gov
RSF Coordinator - Infrastructure Systems	X			Eric Salerno	916-767-2879	Eric.Salerno@CalOES.ca.gov
RSF Coordinator - Infrastructure Systems		X		Joseph Grunditz	510-627-7244	joseph.grunditz@fema.dhs.gov
RSF Coordinator - Housing	X			Robyn Cole	916-767-2881	Robyn.Cole@CalOES.ca.gov
RSF Coordinator - Housing		X		Jesus Ceja	510-627-7781	jesus.ceja@fema.dhs.gov
RSF Coordinator - Health and Social Services (HSS)	X			Melissa Smith	916-767-2963	Melissa.Smith@CalOES.ca.gov
RSF Coordinator - Health and Social Services		X		Shahdy Monemzadeh	202-230-7389	andrea.monemzadeh@fema.dhs.gov
RSF Coordinator - Economic	X			Melissa Hernandez	916-439-9706	Melissa.Hernandez@CalOES.ca.gov
Data Planning Specialist	X			Dylan Kilby	916-655-5055	ContractorDylan.Kilby@CalOES.ca.gov

### Command Staff

Position	S T r a i t b e	F E M A	O F A	Name	Phone	Work Email
Chief Of Staff	X			Bill Simonson	916-539-0333	Bill.Simonson@CalOES.ca.gov
Chief of Staff (Remote)		X		Julie Tsen	202-480-1156	julie.tsen@fema.dhs.gov
Deputy Chief of Staff	X			Dena Wilson	916-704-8791	Dena.Wilson@CalOES.ca.gov
Deputy Chief of Staff	X			Emilie Hill	916-823-1081	Emilie.Hill@CalOES.ca.gov
Legal Advisor	X			Meg Wilson	916-621-8176	Meg.Wilson@CalOES.ca.gov
Legal Advisor (Remote)		X		Robert Ayres	202-674-6721	robert.ayres@fema.dhs.gov
Access and Functional Needs (AFN) (Remote)	X			Vance Taylor	916-205-1630	Vance.Taylor@CalOES.ca.gov
Tribal Affairs Liaison	X			Pauline Totten	916-628-7572	Pauline.Totten@CalOES.ca.gov
Tribal Affairs Liaison (Remote)		X		Christopher Poehlmann	510-627-7285	Christopher.poehlmann@fema.dhs.gov
Civil Rights Advisor (Remote)		X		Victor Concepcion Gonzalez	202-679-1672	victor.concepciongonzalez@fema.dhs.gov
Safety Officer	X			SOC Safety Officer	916-767-8043	SOCsafetyofficer@SOC.CalOES.ca.gov
Environmental Historic Preservation (EHP) Section Chief	X			Gary Buzzell	916-823-6181	Gary.Buzzell@CalOES.ca.gov
Environmental and Historic Preservation (EHP) Advisor (Remote)		X		Emily Benz	940-218-0883	emily.j.benz@fema.dhs.gov
Environmental and Historic Preservation (EHP)	X			Ramzi Ibrahim	916-926-9536	Ramzi.Ibrahim@CalOES.ca.gov
Environmental and Historic Preservation (EHP)	X			Pat Nelson	916-823-1945	Patricia.Nelson@CalOES.ca.gov

Environmental and Historic Preservation (EHP) and Administrative Support	X			Shirley Jake	916-694-7146	Shirley.Jake@CalOES.ca.gov
Environmental and Historic Preservation Support	X			Derek Bays	916-917-4940	Derek.Bays@caloes.ca.gov
Administrative Support / Correspondence	X			Makeda Johnson	916-664-2552	Makeda.Johnson@CalOES.ca.gov
Public Information Officer (PIO)	X			Diana Crofts-Pelayo	916-845-8483	Diana.Crofts-Pelayo@CalOES.ca.gov
Public Information Officer (PIO)	X			Alyson Hanner	916-616-1401	Alyson.Hanner@CalOES.ca.gov
Legislative and External Affairs (Wed-Sun)	X			Alyssa Gomolicke	916-845-8658	Alyssa.Gomolicke@CalOES.ca.gov
Legislative and External Affairs (Mon/Tue)	X			Mandi Strella	916-845-8403	Mandi.Strella@CalOES.ca.gov
Small Business Administration (SBA) PIO			X	Kevin Wynne	916-847-2638	kevin.wynne@sba.gov
Small Business Administration (SBA) PIO			X	Yolanda Stokes	916-200-9813	yolanda.stokes@sba.gov
Peer Support	X			Nikole Schutz	916-709-0434	CovidPeerSupport@SOC.CalOES.ca.gov

### Operations

Position	S t r i b e	F E M A	O F A	Name	Phone	Work Email
Direct Housing Group Supervisor		X		Marianne Pigeon	202-957-4975	marianne.pigeon@fema.dhs.gov
Operations Section Chief	X			Eli Owen	916-214-4132	Eli.Owen@CalOES.ca.gov
Operations Section Chief		X		Pedro Leanza	202-718-1598	pedro.leanza@fema.dhs.gov
Deputy Operations Section Chief	X			Kim Bowman	916-539-5613	ContractorKim.Bowman@CalOES.ca.gov
Special Advisor to Operations	X			John Catching	916-265-8205	John.Catching@CalOES.ca.gov
Public Assistance Support	X			Nicole Erlichman	916-291-7264	Nicole.Erlichman@CalOES.ca.gov
Operations Specialist	X			Ryan Christen	916-616-7840	ContractorRyan.Christen@CalOES.ca.gov
Operations Specialist	X			Kira Stiers	916-926-9858	ContractorKira.Stiers@CalOES.ca.gov
Operations Specialist	X			Jessica London	916-539-6960	Jessica.London@CalOES.ca.gov
Information Management (IM) Group Supervisor	X			Brad Harrelson	916-531-3793	ContractorBrad.Harrelson@CalOES.ca.gov
Mission Assignment Manager (Remote)		X		DeLane Garner	202-717-0926	delane.garner@fema.dhs.gov
Mission Resource Tasking	X			Ryan Becze	916-761-4491	Ryan.Becze@CalOES.ca.gov
ESF-3 Public Works / Engineering			X	Amy Aton	415-286-6089	amy.t.aton@usace.army.mil
ESF-3 Public Works / Engineering			X	Jessica Fischer	916-807-0028	jessica.d.fischer@usace.army.mil
ESF-6 Mass Care			X	Luke Beckman	650-740-5853	luke.beckman@redcross.org
ESF-6 Mass Care			X	Denise Everhart	503-936-3263	denise.everhart@redcross.org
ESF-6 Housing and Urban Development (HUD)			X	Ed Ellis	940-453-2861	edward.d.ellis@hud.gov
ESF-12 PG&E Representative			X	Jeffrey Briggs	209-996-8186	Jeffrey.Briggs@PGE.com

Public Assistance Branch Director	X			Robbie Larsen	916-600-3126	Robert.Larsen@CalOES.ca.gov
Public Assistance Branch Director (Remote)		X		John Christensen	510-520-1345	john.christensen2@fema.dhs.gov
Program Delivery Manager (PDMG) - Branch II	X			Derick Earl	916-767-2724	Derick.Earl@CalOES.ca.gov
Program Delivery Manager (PDMG) - Branch III	X			Simon Pissi	916-823-2932	Simon.Pissi@CalOES.ca.gov
Program Delivery Manager (PDMG) - Branch IV	X			Clyde Muraoka	562-795-2925	Clyde.Muraoka@CalOES.ca.gov
Hazard Mitigation Branch Director	X			Lorin Sabin	916-539-9480	Lorin.Sabin@CalOES.ca.gov
Hazard Mitigation Branch Chief (Region IX)		X		Robert McCord	510-712-0168	robert.mccord@fema.dhs.gov
Deputy Hazard Mitigation Branch Director	X			Justin Barnes	541-591-1494	ContractorJustin.Barnes@CalOES.ca.gov
Hazard Mitigation Staff	X			Christopher Lozano	916-516-4027	Christopher.Lozano@CalOES.ca.gov
Hazard Mitigation Staff	X			Jan Stout	916-823-6643	Jan.Stout@CalOES.ca.gov
Hazard Mitigation Staff	X			Karen McCready	916-216-1751	Karen.McCready-Hoover@CalOES.ca.gov
Hazard Mitigation Staff	X			Madison Elliott	916-823-6091	Madison.Elliott@CalOES.ca.gov
Hazard Mitigation Staff	X			Ana Miscolta	916-823-1567	Ana.Miscolta@CalOES.ca.gov
Individual Assistance Branch Director	X			Nicole Watanabe	916-216-1590	Nicole.Watanabe@CalOES.ca.gov
Individual Assistance Branch Director (Region IX)		X		Jesus Ceja	510-627-7781	jesus.ceja@fema.dhs.gov
Individual Assistance Branch Director - 4569		X		Andrea Monemzadeh	202-230-7389	andrea.monemzadeh@fema.dhs.gov
Deputy Individual Assistance Branch Director - Branch I & III	X			Katrina Palomar	916-494-8138	Katrina.Palomar@CalOES.ca.gov
Deputy Individual Assistance Branch Director - Branch II & IV	X			Nicole Benson	916-767-2954	Nicole.Benson@CalOES.ca.gov
Individual Assistance Support	X			Becca Berggren	916-340-5893	Becca.Berggren@CalOES.ca.gov
Individual Assistance Support	X			Summer Wright	916-715-3558	Summer.Wright@CalOES.ca.gov
Individual Assistance Support	X			Veronica Silva	916-879-5186	Veronica.Silva@CalOES.ca.gov
Individual Assistance Support (ROI Collection)	X			Kamla Dixon	916-591-8749	Kamla.Dixon@CalOES.ca.gov
Voluntary Agency Liaison (VAL)	X			Valeri Mihanovich	916-628-4797	Valeri.Mihanovich@CalOES.ca.gov
Voluntary Agency Liaison (VAL) Group Supervisor		X		Colleen Zaremba	510-424-1426	colleen.zaremba@fema.dhs.gov
Small Business Administration (SBA) Officer in Charge (OIC)			X	Michael Brown	916-216-9792	michael.brown@sba.gov
Information Management (IM) Group Supervisor (DR4558) (Remote)		X		Lupita Henderson	202-655-8507	lupita.henderson@fema.dhs.gov
Information Management (IM) Group Supervisor (DR-4569) (Remote)		X		Rebecca Smith	202-957-4977	rebecca.smith@fema.dhs.gov
Community Services Group Services		X		Linda Taylor	202-368-9863	linda.taylor2@fema.dhs.gov
Northern Branch I Director	X			Cole Glenwright	916-425-0302	Cole.Glenwright@CalOES.ca.gov
Deputy Northern Branch I Director	X			Baylor Cartica	916-926-1477	Baylor.Cartica@CalOES.ca.gov

Northern Branch I Operations Specialist	X		Kelsie McInnis	916-767-3006	Kelsie.McInnis@CalOES.ca.gov
Northern Branch I Operations Specialist	X		Marshall Ayre	916-203-4685	Marshall.Ayre@CalOES.ca.gov
Northern Branch I Operations Specialist	X		John Melendez	916-601-2649	John.Melendez@CalOES.ca.gov
Northern Branch I Operations Liaison	X		Alex Maher	916-607-2386	Alex.Maher@CalOES.ca.gov
Northern Branch I Cost Recovery Specialist	X		Jeremy Busch	916-823-6647	Jeremy.Busch@CalOES.ca.gov
Northern Branch I Public Assistance Liaison	X		Scott Wagner	916-823-2260	Scott.Wagner@CalOES.ca.gov
Northern Branch I Program Delivery Manager (PDMG)	X		Walter Manning	916-823-6639	ContractorWalter.Manning@CalOES.ca.gov
Northern Branch I Program Delivery Manager (PDMG)	X		Kevin Rainville	916-715-4358	ContractorKevin.Rainville@CalOES.ca.gov
Inland Branch II Director	X		Amber Lane	916-823-6355	Amber.Lane@CalOES.ca.gov
Deputy Inland Branch II Director	X		Sean Rose	916-384-6419	Sean.Rose@CalOES.ca.gov
Deputy Inland Branch II Director	X		Kendall Wilson	916-204-1391	Kendall.Wilson@CalOES.ca.gov
Inland Branch II Operations Specialist	X		James Ginyard	916-823-2883	James.Ginyard@CalOES.ca.gov
Inland Branch II Operations Specialist	X		Jonathan Bell	916-612-7133	Jonathan.Bell@CalOES.ca.gov
Inland Branch II Hazard Tree Specialist	X		Jon Luz	916-531-8266	Jon.Luz@CalOES.ca.gov
Inland Branch II Public Assistance Liaison	X		Marcia Burchiel	530-526-1178	Marcia.Burchiel@CalOES.ca.gov
Inland Branch II Program Delivery Manager (PDMG)	X		Mike Halsey	916-531-7109	ContractorMike.Halsey@CalOES.ca.gov
Bay Branch III Director	X		Kendra Bowyer	916-214-2043	Kendra.Bowyer@CalOES.ca.gov
Deputy Bay Branch III Director	X		Mike Grasso	916-612-3018	Mike.Grasso@CalOES.ca.gov
Bay Branch III Technical Specialist	X		Scott Satterthwaite	916-823-6377	ContractorScott.Satterthwaite@CalOES.ca.gov
Bay Branch III Technical Specialist	X		Dale Jankowski	916-712-0677	ContractorDale.Jankowski@CalOES.ca.gov
Bay Branch III Cost Recovery Specialist	X		William Chan	916-328-7596	William.Chan@CalOES.ca.gov
Bay Branch III Public Assistance Liaison	X		Jayzee Dominguez	916-275-8961	Jayzee.Dominguez@CalOES.ca.gov
Bay Branch III Program Delivery Manager (PDMG)	X		Kelly Nafie	916-291-7159	ContractorKelly.Nafie@CalOES.ca.gov
Bay Branch III Program Delivery Manager (PDMG)	X		Xavier Moreno	916-205-4014	ContractorXavier.Moreno@CalOES.ca.gov
Bay Branch III Program Delivery Manager (PDMG)	X		Tray Cashman	916-715-2516	ContractorTray.Cashman@CalOES.ca.gov
Southern Branch IV Director	X		Dena Wilson	916-704-8791	Dena.Wilson@CalOES.ca.gov
Deputy Southern Branch IV Director	X		Nick Crisosto	916-767-3055	Nicholas.Crisosto@CalOES.ca.gov
Southern Branch IV Operations Specialist	X		Cory Brandt	916-767-2729	ContractorCory.Brandt@CalOES.ca.gov
Southern Branch IV Technical Specialist	X		Bill White	916-214-6859	ContractorBill.White@CalOES.ca.gov
Southern Branch IV Technical Specialist	X		Jesse Estrada	916-767-3029	ContractorJesse.Estrada@CalOES.ca.gov
Southern Branch IV Cost Recovery Specialist	X		Gage Schultz	916-926-9849	Gage.Schultz@CalOES.ca.gov

Southern Branch IV Program Delivery Manager (PDMG)	X			Derick Earl	562-767-2724	Derick.Earl@CalOES.ca.gov
Debris Operations Lead	X			Robbie Larsen	916-600-3126	Robert.Larsen@CalOES.ca.gov
Debris Operations Lead	X			Kendra Bowyer	916-214-2043	Kendra.Bowyer@CalOES.ca.gov
Debris Operations Lead	X			Cole Glenwright	916-425-0302	Cole.Glenwright@CalOES.ca.gov
Northern Branch Debris Planner	X			Melissa Perry	661-623-3554	Melissa.Perry@TetraTech.com
Inland Branch Debris Planner	X			Doug Amato	908-278-2536	Doug.Amato@Neel-Schaffer.com
Bay Branch Debris Planner	X			Brenda Villarreal	540-522-3685	Brenda.Villarreal@WSP.com
Southern Branch Debris Planner	X			Ali Oppelt	317-748-7372	Ali.Oppelt@Arcadis.com
FEMA LOG		X		Traci Knox	917-485-0916	traci.knox@fema.dhs.gov
Contracting Officer (Remote)		X		Demetria Carter	202-702-5180	demetria.carter@fema.dhs.gov
CCC Representative (Remote)	X			Ray Garcia	916-599-1415	Emergency.Services@CCC.ca.gov
CCC Representative (Remote)	X			Michaela Hayden	916-599-1415	Emergency.Services@CCC.ca.gov
CalOES Operations Inbox	X			N/A	N/A	JFOOperations@CalOESEOC.onmicrosoft.com

### Logistics

Position	STRAITBEE	FEMA	OFA	Name	Phone	Work Email
Logistics Section Chief	X			Ryan Becze	916-761-4491	Ryan.Becze@CalOES.ca.gov
Direct Housing SME		X		Traci Knox	917-485-0916	traci.knox@fema.dhs.gov
TCOMM	X			Duty Officer	916-845-8911	TDO@CalOES.ca.gov
Client Support (IT)	X			IT Help Desk	916-845-8311	SDApp@CalOES3650.onmicrosoft.com
HQ Networking (Remote)	X			Lovell Hopper	916-869-2396	Lovell.Hopper@CalOES.ca.gov

### Planning

Position	STRAITBEE	FEMA	OFA	Name	Phone	Work Email
Planning Section Chief	X			Ryan Becze	916-761-4491	Ryan.Becze@CalOES.ca.gov
Planning Section Chief		X		Susan Hardy	202-615-7094	susan.hardy@fema.dhs.gov
Deputy Planning Section Chief / Integrated Strategic Plan Lead	X			Gina Avelar	951-850-4799	Gina.Avelar@CalOES.ca.gov
Planning Support Unit Lead (Debris)	X			Adriane Ceballos	916-823-6474	Adriane.Ceballos@CalOES.ca.gov
Planning Support Unit Lead (Remote)		X		Douglas Urbanek	540-532-2967	Douglas.urbanek@fema.dhs.gov
Situation Status Unit Lead	X			Tim Ash	916-247-7165	Tim.Ash@CalOES.ca.gov
GIS Unit Leader (Remote)		X		Glorimar Concepcion Munoz	202-304-5277	glorimar.concepcion@fema.dhs.gov
NOAA Liaison (NWS) (Remote)			X	Sarah Rogowski	703-965-5370	WR.ROC@NOAA.gov
Cal OES Planning Inbox	X			N/A	N/A	JFOPlans@CalOESEOC.onmicrosoft.com
FEMA Planning Inbox		X		N/A	N/A	fema-r9-cawildfire-planning@fema.dhs.gov

### Finance & Administration

Position	S T r a i t b e e	F E M A	O F A	Name	Phone	Work Email
Finance and Administration Section Chief / Travel Support	X			Destiny Saechou	916-612-3878	Destiny.Saechou@CalOES.ca.gov
Finance and Administration Section Chief (Remote)		X		Kenneth Kersting	202-615-8739	kenneth.kersting@fema.dhs.gov
Deputy Finance and Administration Section Chief / Travel Support	X			Karina Fayer	916-328-7623	Karina.Fayer@CalOES.ca.gov
Deputy Finance and Administration Section Chief (Remote)		X		John Svolos	202-702-5253	john.svolos@fema.dhs.gov
Timekeeping Support	X			Gracie Vigil	916-584-6674	Gracie.Vigil@CalOES.ca.gov
HR Manager (Remote)		X		Juan Porter	202-341-4152	juan.porter@fema.dhs.gov
<b>4. Prepared by:</b> Gina Avelar, DPSC <b>Date/Time:</b> 05/04/2021 1447				<b>5. Reviewed by:</b> Ryan Becze, PSC <b>Date/Time:</b> 05/04/2021 1447		

# COMMAND ORGANIZATION CHART

**1. Incident Name**  
2020 July/August/September  
Statewide Fires

**2. Date Prepared**  
05/04/2021

**3. Operational Period: Time & Date**  
0700 PDT 05/05/2021 -  
0700 PDT 05/12/2021



**UNIFIED COORDINATION GROUP (UCG)**

**State Coordinating Officer**  
Ryan Buras (S)  
**Federal Coordinating Officer**  
Willie Nunn (F)  
**Deputy Federal Coordinating Officer**  
Andrew Grant (F)  
**State Disaster Recovery Coordinator**  
Robert Troy (S)

**Administrative Support / Correspondence**  
Makeda Johnson (S)

**Chief of Staff**  
Bill Simonson (S)  
Julie Tsen (F)  
**Deputy Chief of Staff**  
Dena Wilson (S)  
Emilie Hill (S)

**Environmental and Historic Preservation (EHP) Section Chief**  
Gary Buzzell (S)  
**Environmental and Historic Preservation (EHP) Advisor**  
Emily Benz (F)  
**Environmental and Historic Preservation (EHP)**  
Ramzi Ibrahim (S)  
Pat Nelson (S)

**Public Information Officer (PIO)**  
Diana Crofts-Pelayo (S)  
**Legislative and External Affairs**  
Mandi Strella (S) (Wed-Sat)  
Alyssa Gomolicke (S) (Mon/Tue)  
**Small Business Administration (SBA) PIO**  
Kevin Wynne (OFA)  
Yolanda Stokes (OFA)

**Safety Officer**  
SOC Safety Officer (S)

**Legal Advisor**  
Meg Wilson (S)  
Robert Ayres (F)  
**AFN / DIA**  
Vance Taylor (S)  
**Tribal Affairs Liaison**  
Pauline Totten (S)  
Christopher Poehlmann (F)

**Operations Section Chief**  
Eli Owen (S)  
Pedro Leanza (F)  
**Deputy Operations Section Chief**  
Kim Bowman (S)

**Logistics Section Chief**  
Ryan Becze (S)

**Planning Section Chief**  
Ryan Becze (S)  
Susan Hardy (F)  
**Deputy Planning Section Chief**  
Gina Avelar (S)

**Finance and Administration Section Chief**  
Destiny Saechou (S)  
Kenneth Kersting (F)  
**Deputy Finance and Administration Section Chief**  
Karina Fayer (S)  
John Svobos (F)

**Operations**  
(See Operations Section Organization Chart)

**Logistics**  
(See Logistics Section Organization Chart)

**Planning**  
(See Planning Section Organization Chart)

**Travel Support**  
Destiny Saechou (S)  
Karina Fayer (S)

**HR Manager**  
Juan Porter (F)

**Timekeeping Support**  
Gracie Vigil (S)

**ICS-207**

**4. Prepared By:** Gina Avelar, DPSC

**5. Reviewed By:** Ryan Becze, PSC

# FIELD OPERATIONS ORGANIZATION CHART

1. Incident Name  
2020 July/August/September  
Statewide Fires

2. Date Prepared  
05/04/2021

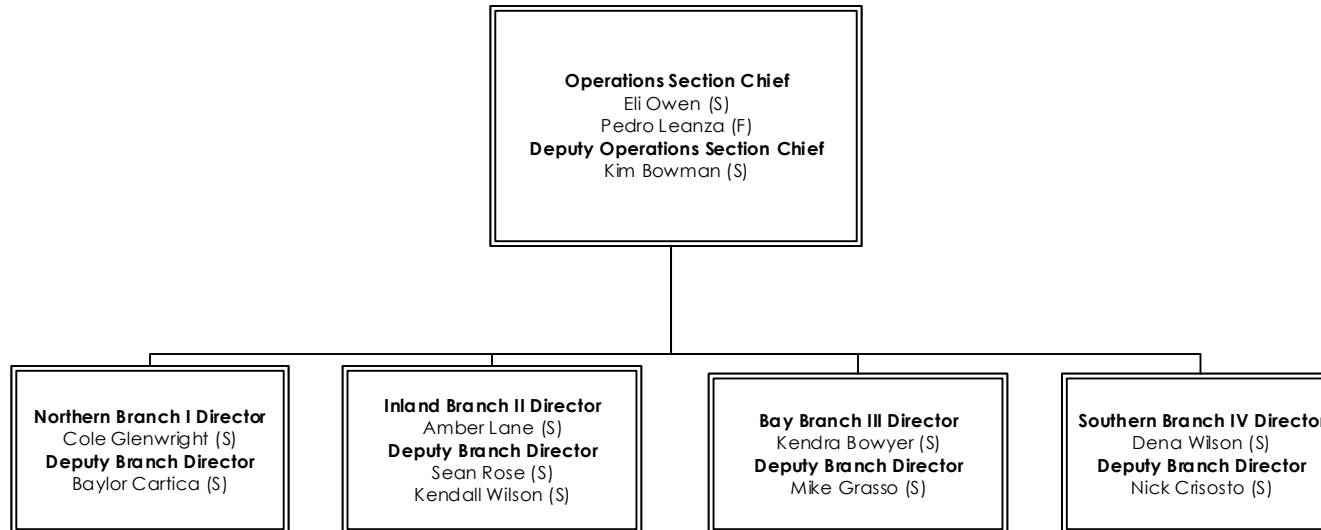
3. Operational Period: Time & Date  
0700 PDT 05/05/2021 -  
0700 PDT 05/12/2021



Cal OES



FEMA

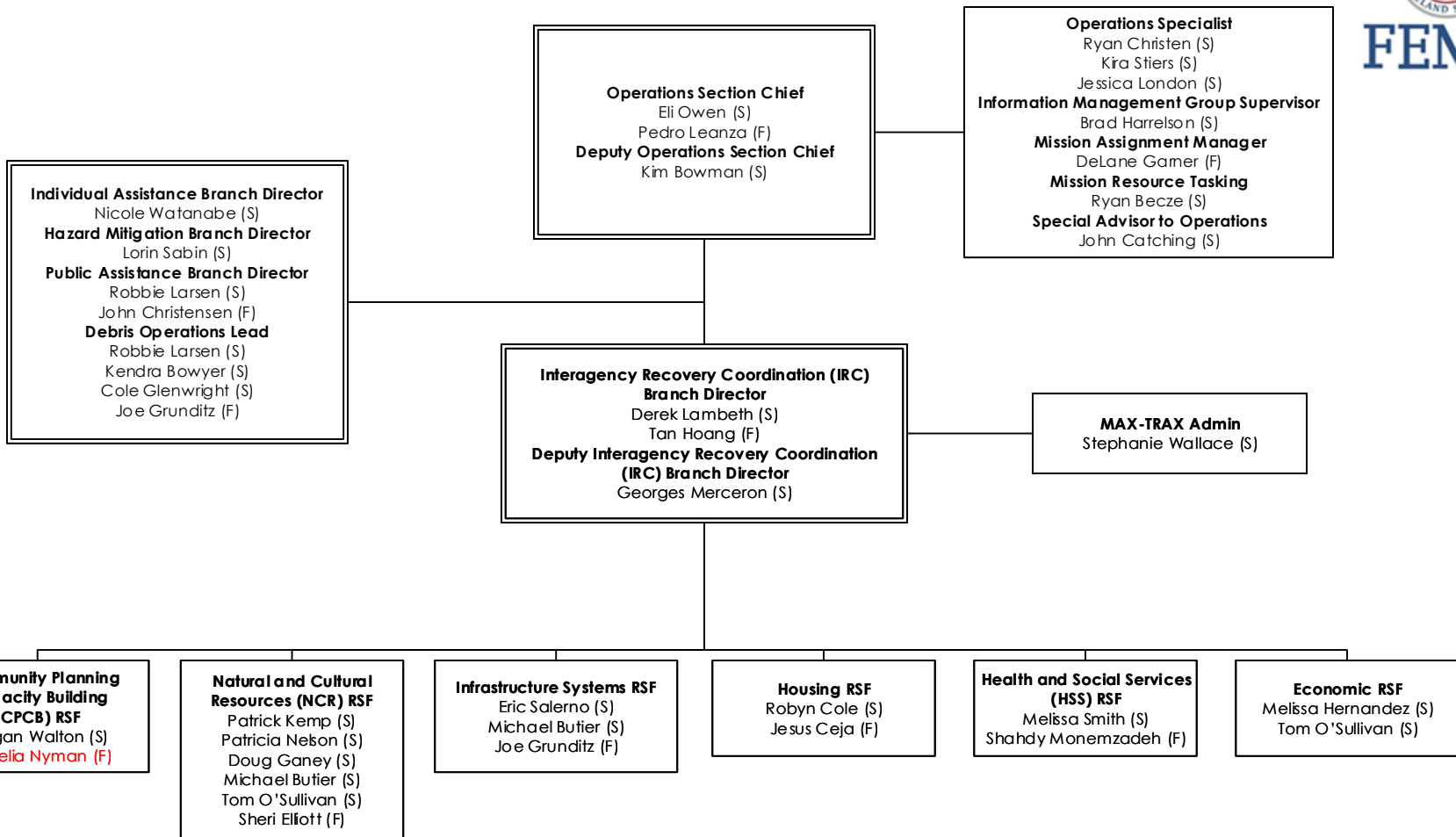


# IRC ORGANIZATION CHART

**1. Incident Name**  
2020 July/August/September  
Statewide Fires

**2. Date Prepared**  
05/04/2021

**3. Operational Period: Time & Date**  
0700 PDT 05/05/2021 -  
0700 PDT 05/12/2021

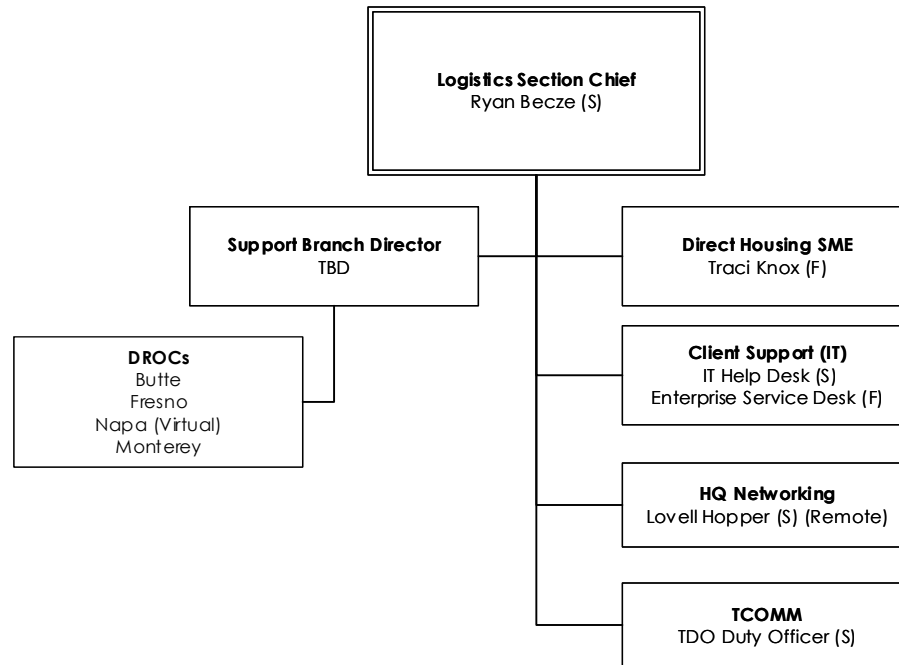


# LOGISTICS SECTION ORGANIZATION CHART

1. Incident Name  
2020 July/August/September  
Statewide Fires

2. Date Prepared  
05/04/2021

3. Operational Period: Time & Date  
0700 PDT 05/05/2021 -  
0700 PDT 05/12/2021

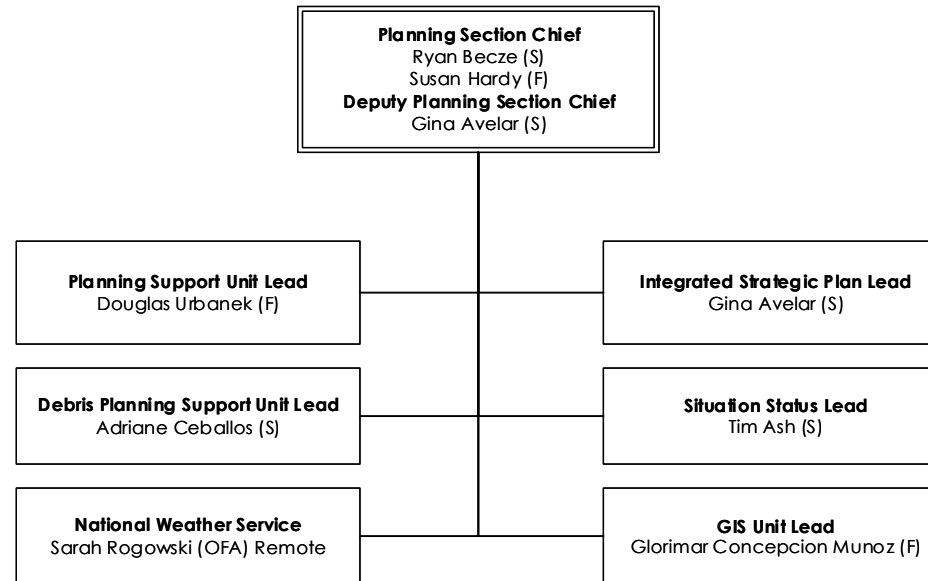


# PLANNING SECTION ORGANIZATION CHART

1. Incident Name  
2020 July/August/September  
Statewide Fires

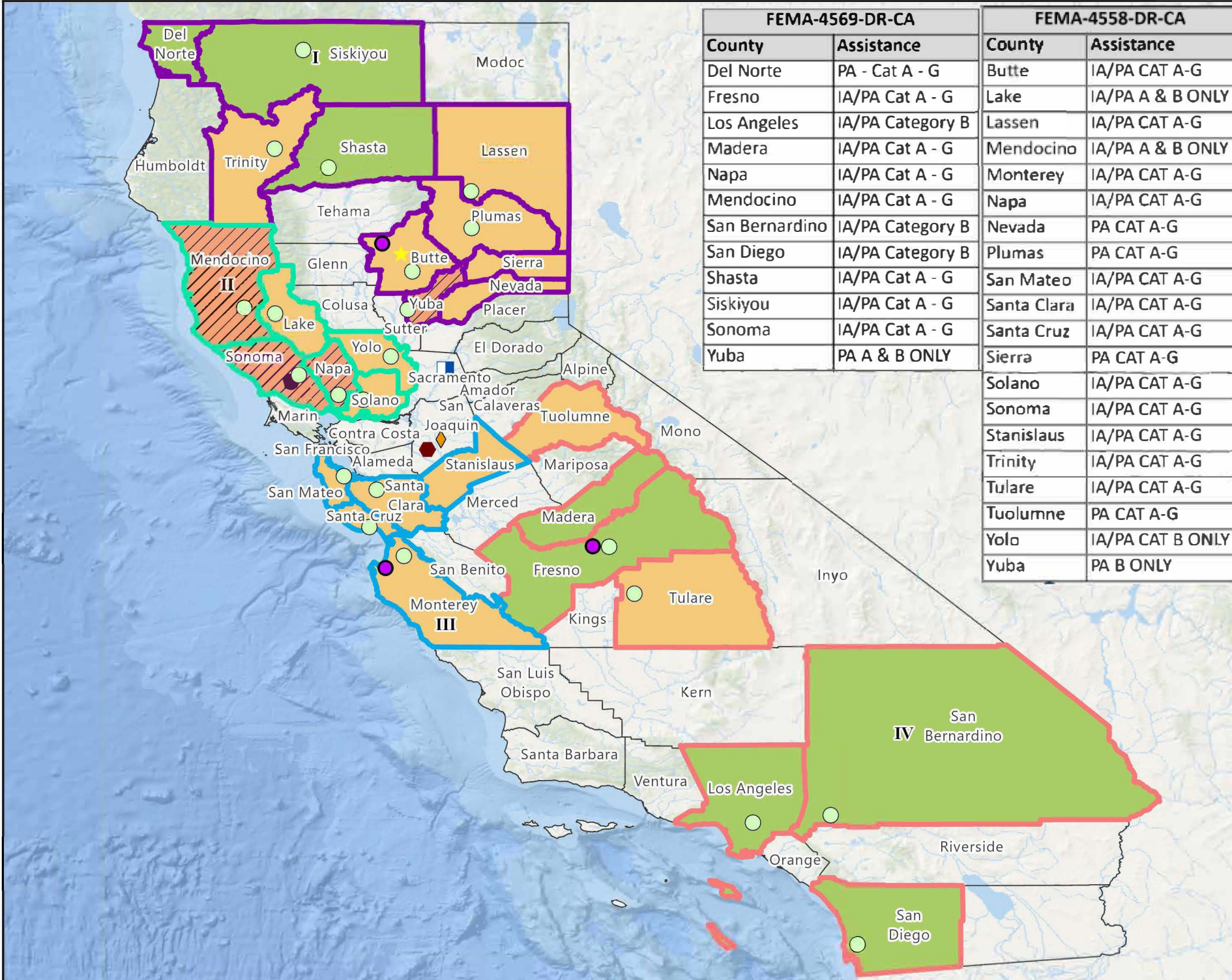
2. Date Prepared  
05/04/2021

3. Operational Period: Time & Date  
0700 PDT 05/05/2021 -  
0700 PDT 05/12/2021

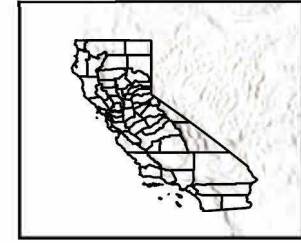


**FEMA Region IX**

DR-4558-CA And DR-4569-CA: California Wildfires  
Incident Facilities IAP Map: 5/04/2021



FEMA-4569-DR-CA		FEMA-4558-DR-CA	
County	Assistance	County	Assistance
Del Norte	PA - Cat A - G	Butte	IA/PA CAT A-G
Fresno	IA/PA Cat A - G	Lake	IA/PA A & B ONLY
Los Angeles	IA/PA Category B	Lassen	IA/PA CAT A-G
Madera	IA/PA Cat A - G	Mendocino	IA/PA A & B ONLY
Napa	IA/PA Cat A - G	Monterey	IA/PA CAT A-G
Mendocino	IA/PA Cat A - G	Napa	IA/PA CAT A-G
San Bernardino	IA/PA Category B	Nevada	PA CAT A-G
San Diego	IA/PA Category B	Plumas	PA CAT A-G
Shasta	IA/PA Cat A - G	San Mateo	IA/PA CAT A-G
Siskiyou	IA/PA Cat A - G	Santa Clara	IA/PA CAT A-G
Sonoma	IA/PA Cat A - G	Santa Cruz	IA/PA CAT A-G
Yuba	PA A & B ONLY	Sierra	PA CAT A-G
		Solano	IA/PA CAT A-G
		Sonoma	IA/PA CAT A-G
		Stanislaus	IA/PA CAT A-G
		Trinity	IA/PA CAT A-G
		Tulare	IA/PA CAT A-G
		Tuolumne	PA CAT A-G
		Yolo	IA/PA CAT B ONLY
		Yuba	PA B ONLY



- Incident Facilities**
- Distribution Center
  - ★ Long Term Recovery Office
  - County EOC
  - ◆ Incident Support Base
  - JFO - State
  - DROC
- Designated Counties**
- Designated Counties 4558
  - Designated Counties 4569
  - Designated Counties 4558 & 4569

- Branch**
- I
  - II
  - III
  - IV