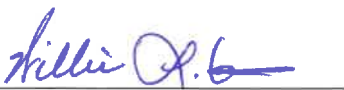




# JOINT INCIDENT ACTION PLAN



  
for Ryan Buras  
SCO

  
Willie G. Nunn  
FCO



## Confidentiality Notice

This document is for the sole use of the intended recipient(s) and may contain confidential and privileged information. Any unauthorized review, use, disclosure, or distribution is prohibited without the express written consent of the Cal OES Executive Offices.

<b>FEMA ICS FORM 202 INCIDENT OBJECTIVES</b>		<b>1. FEMA Disaster Number:</b> FEMA-4558-DR	<b>2. Date/Time Prepared:</b> 10/19/2020 1000 PDT
<b>4. Operational Period:</b> 10/20/2020 0700 PDT to 10/22/2020 0700 PDT			
<b>5. General objectives for the Incident:</b>			
Objective Number	Description		
	PRIORITIES		
	Ensure safety, protection, and continuity of government operations and other essential workforce and services.		
	Protect vulnerable populations including older adults, persons with access and functional needs, homeless populations, and persons in congregate and institutional settings.		
	Support rapid and comprehensive community recovery and integration of local, state, private sector and federal recovery resources while maintaining environmental and historical preservation of the impacted areas.		
	Ensure displaced survivors are in accessible, safe, permanent housing and future risks to housing are reduced.		
	Integrate tribal considerations into all recovery operations.		
	Ensure accurate, accessible, and jointly coordinated public information.		
	Provide equitable regional coordination, collaboration, decision-making, and resource sharing.		
	Unify Task Force construct in support of local recovery priorities.		
	Ensure infrastructure systems are restored with greater resiliency to future risks.		
	DR-4558 OBJECTIVES		
11 c.	Implement proactive elimination, substitution, engineering, and administrative control measures, to minimize responders' exposure to hazards, illness, and spread of COVID-19.		
29.	Individual Assistance (IA) – Complete survivor registration for all IA designated counties NLT 11/23/2020.		
16 b.	Individual Assistance - Review, approve, resource and implement approved IA programs in IA designated counties NLT 12/31/2020.		
30.	Public Assistance – Submit all Request for Public Assistance to FEMA NLT 11/01/2020		
36.	Hazard Mitigation – Provide multi-hazard mitigation information, education, and outreach, including National Flood Insurance Program, in impacted counties NLT 11/15/2020.		
7 b.	Access and Functional Needs (AFN) – Serve as the “front line” for AFN integration within task force produced plans, best practices, and guidance documents a minimum of once per week.		
35.	Access and Functional Needs – Provide daily briefings for AFN stakeholders as means to raising overall understanding, awareness, and response among whole community partners and individuals with access or functional needs.		
9 c.	Tribal Affairs - Integrate tribal considerations into all recovery operations.		
20 b.	Debris TF – CalRecycle to develop a draft for debris removal solicitation documents NLT 10/23/2020.		
21.	Debris TF – Cal OES Legal Affairs to complete draft of Right of Entry permit (pending FEMA eligibility determination) NLT 10/23/2020.		
22 b.	Debris TF – Debris Removal TF to complete household hazardous waste removal from a total of 1,201 out of 2,694 parcels NLT 10/21/2020 (Department of Toxic Substance Control and US Environmental Protection Agency combined; terrain and size of parcels may affect this number).		
28 a.	Watershed/Debris Flow TF – Develop trifold report for Recovery Leadership review that tracks total locally identified Values at Risk and percent addressed NLT 10/30/2020.		
23.	Schools TF – Address all locally-identified unmet needs through resource distribution, information sharing, and technical assistance for fire impacted school districts planning to reopen facilities for in-school learning in October 2020 NLT 10/31/2020.		
24.	Schools TF – Communicate debris removal schedules with fire impacted school districts and coordinate the prioritization of schools planning to reopen facilities in October 2020 NLT 10/31/2020.		
25.	Schools TF – Support the delivery of distance learning educational materials for fire impacted school districts planning to reopen for distance learning in October 2020 NLT 10/31/2020.		
31.	Public Information – Share disaster recovery progress through developing a minimum of three (3) proactive and reactive informational products per week highlighting new topics or significant issues that inform the public.		
32.	Interagency Recovery Coordination – Identify appropriate State and Federal RSF Agencies to support the mission NLT 10/30/2020.		
37.	Environmental and Historic Preservation – Identify the environmental permitting needs with our state partners for private property debris removal NLT 10/23/2020.		
	DR-4569 OBJECTIVES		
1.	Establish and organizational structure to meet operational requirements NLT 10/22/2020.		
2.	Individual Assistance – Complete survivor registration for all IA designated counties NLT 12/15/2020.		
3.	Individual Assistance – Review, approve, resource and implement approved IA programs in IA designated counties NLT 02/28/2021.		
<b>6. Weather Forecast for Period (Only if significant to Operations)</b>			

Monday-Wednesday

- Slight cooling trend will continue Monday as onshore flow increases, but most areas will still have above normal temperatures.
- Moderate offshore winds redevelop Monday Night through Tuesday Night across northern CA potentially bringing critical fire weather conditions, especially for the northern Sacramento Valley and the Bay Area hills.

Thursday-Sunday

- Additional offshore winds possible Thursday into Friday across portions of northern CA.
- A cold front will reach northern portions of the state on Saturday and will create another period of strong northerly

**7. General/Safety Message**

- Maintain social distancing of 6-feet or greater, in all common areas.
- Vehicle COVID-19 protection measures: Limit of one passenger, who will sit in the far rear seat, both driver and passenger must wear a face mask/covering, keep hand sanitizer available, use disinfectant wipes on window, radio, navigation and other control buttons, seat adjustment levers, armrests, door handles, seat belt buckles, etc., and keep air circulating by opening windows or using air conditioning.
- Comply with the Health and Safety Plan specific to the COVID-19 incident including the Cal OES updated Face Covering Policy (06/28/20) that requires face coverings.
- If sick with flu or flu like symptoms do not report to work.
- Familiarize yourself with the facility Occupant Emergency Plan (OEP), evacuation routes and shelter-in-place.
- Ensure good communication and accountability plans are established and complied with.
- Review the Job Hazard Analysis and familiarize yourself with the hazard controls for each task.
- Critical Incident stress during these uncertain times can affect anyone at any time. Peer counselors are available as a resource 24 hours a day @ (916) 445-4337 or CovidPeerSupport@SOC.CalOES.ca.gov.
- FEMA's Employee Assistance Program (EAP) support is available 24 hours a day, 7 days a week by calling 800-222-0364 or on the web at www.FOH4You.com.
- If in doubt about the safety of any activity, stop and re-evaluate to ensure that the activity can be performed safely and consult the Safety Officer as necessary.

**8. Attachments (mark if attached)**

<input checked="" type="checkbox"/> Assignment Lists - ICS 204	<input checked="" type="checkbox"/> Organization Chart - ICS 207	<input checked="" type="checkbox"/> Safety Message - ICS 208
<input checked="" type="checkbox"/> Radio Communications Plan - ICS 205	<input type="checkbox"/> Air Operations Summary - ICS 220	<input checked="" type="checkbox"/> Safety Message ICS 213 (FEMA Forward Framework))
<input checked="" type="checkbox"/> Telephone Communications Plan - ICS 205 A	<input checked="" type="checkbox"/> Meeting Schedule - ICS 230	<input type="checkbox"/>
<input checked="" type="checkbox"/> Medical Plan - ICS 206	<input checked="" type="checkbox"/> Incident Map	<input type="checkbox"/>

**9. Prepared by:** Gina Avelar PSUL  
**Date/Time:** 10/19/2020 1455 PDT

**10. Reviewed By:** Nicole Erlichman PSC  
**Date/Time:** 10/19/2020 1800 PDT

<b>FEMA ICS Form 205A Incident Telephone Communication Plan</b>	<b>FEMA Disaster Number:</b> FEMA-4558-DR	<b>2. Operational Period:</b> 10/20/2020 0700 PDT to 10/22/2020 0700 PDT
---	--	---

**3. Contact List**
**Incident Facilities/Contacts**

Incident Facilities	Facility Operational Hours	Phone Number	Additional Info
<p><b>Joint Field Office</b> ,            2995 Prospect Park Dr ,            Rancho Cordova ,            CA 95670-6006</p> <p><b>USNG:</b> 10S FH 50077 73080</p>	Monday: 0700 PDT - 1900 PDT Tuesday: 0700 PDT - 1900 PDT Wednesday: 0700 PDT - 1900 PDT Thursday: 0700 PDT - 1900 PDT Friday: 0700 PDT - 1900 PDT Saturday: 0700 PDT - 1900 PDT Sunday: <b>Closed</b>	<p><b>Holli Griffiths</b></p> <p>Phone: 202-718-1156</p>	Working Hours: 0730 - 1730 for State staff, unless mission critical
<p><b>DC-Tracy</b> ,            Distribution Center ,            1547 E Grant Line Road ,            Tracy ,            California 95304</p> <p><b>USNG:</b> 10S FG 40751 79750</p>	Monday: 0900 PDT - 1700 PDT Tuesday: 0900 PDT - 1700 PDT Wednesday: 0900 PDT - 1700 PDT Thursday: 0900 PDT - 1700 PDT Friday: 0900 PDT - 1700 PDT Saturday: <b>Closed</b> Sunday: <b>Closed</b>	<p><b>Randall Pape</b></p> <p>Phone: 209-395-7827</p>	
<p><b>Sharpe Depot</b> ,            ISB ,            700 Roth Road ,            French Camp ,            California 95231</p> <p><b>USNG:</b> 10S FG 52286 91207</p>	Monday: 0900 PDT - 1700 PDT Tuesday: 0900 PDT - 1700 PDT Wednesday: 0900 PDT - 1700 PDT Thursday: 0900 PDT - 1700 PDT Friday: 0900 PDT - 1700 PDT Saturday: <b>Closed</b> Sunday: <b>Closed</b>	<p><b>Gary Melvin</b></p> <p>Phone: 256-343-6609</p>	
<p><b>Lake County EOC</b> ,            EOC ,            1375 Hoyt Ave ,            Lakeport ,            CA 94534</p> <p><b>USNG:</b> 10S EJ 07508 28263</p>	Monday: 0700 PDT - 0700 PDT Tuesday: 0700 PDT - 0700 PDT Wednesday: 0700 PDT - 0700 PDT Thursday: 0700 PDT - 0700 PDT Friday: 0700 PDT - 0700 PDT Saturday: 0700 PDT - 0700 PDT Sunday: 0700 PDT - 0700 PDT	<p><b>Watch</b></p> <p>Phone: 707-262-4090</p>	
<p><b>Napa County EOC</b> ,            EOC ,            1195 Third Street, Suite B-20 ,            Napa ,            California 94559</p> <p><b>USNG:</b> 10S EH 62515 39058</p>	Monday: 0700 PDT - 0700 PDT Tuesday: 0700 PDT - 0700 PDT Wednesday: 0700 PDT - 0700 PDT Thursday: 0700 PDT - 0700 PDT Friday: 0700 PDT - 0700 PDT Saturday: 0700 PDT - 0700 PDT Sunday: 0700 PDT - 0700 PDT	<p><b>Watch</b></p> <p>Phone: 707-299-1892</p>	
<p><b>Napa County LAC</b> ,            ,            1428 Spring Street ,            Napa ,            CA 94574</p> <p><b>USNG:</b> 10S EH 63197 39939</p>	Monday: 0900 PDT - 1800 PDT Tuesday: 0900 PDT - 1800 PDT Wednesday: 0900 PDT - 1800 PDT Thursday: 0900 PDT - 1800 PDT Friday: 0900 PDT - 1800 PDT Saturday: 0900 PDT - 1800 PDT Sunday: <b>Closed</b>	<p><b>Adriane Ceballos (S)</b></p> <p>Phone: 916-823-6474</p>	

<p><b>San Mateo County EOC ,</b> EOC , 501 Winslow Street , Redwood City , California 94063</p> <p><b>USNG: 10S EG 67955 49458</b></p>	<p>Monday: 0700 PDT - 0700 PDT Tuesday: 0700 PDT - 0700 PDT Wednesday: 0700 PDT - 0700 PDT Thursday: 0700 PDT - 0700 PDT Friday: 0700 PDT - 0700 PDT Saturday: 0700 PDT - 0700 PDT Sunday: 0700 PDT - 0700 PDT</p>	<p><b>Watch</b></p> <p>Phone: 650-363-4915</p>	
<p><b>Santa Cruz County EOC ,</b> EOC , 5200 Soquel Avenue , Santa Cruz , California 95062</p> <p><b>USNG: 10S EF 90975 93664</b></p>	<p>Monday: 0700 PDT - 0700 PDT Tuesday: 0700 PDT - 0700 PDT Wednesday: 0700 PDT - 0700 PDT Thursday: 0700 PDT - 0700 PDT Friday: 0700 PDT - 0700 PDT Saturday: 0700 PDT - 0700 PDT Sunday: 0700 PDT - 0700 PDT</p>	<p><b>Watch</b></p> <p>Phone: 831-454-2166</p>	
<p><b>Santa Cruz County MRIC #4 ,</b>  205 Front Street , Santa Cruz , CA 95060</p> <p><b>USNG: 10S EF 86919 91782</b></p>	<p>Monday: 1100 PDT - 1700 PDT Tuesday: 1100 PDT - 1700 PDT Wednesday: 1100 PDT - 1700 PDT Thursday: 1100 PDT - 1700 PDT Friday: 1100 PDT - 1700 PDT Saturday: 1100 PDT - 1700 PDT Sunday: <b>Closed</b></p>	<p><b>Linda Durall</b></p> <p>Phone: 202-809-1690</p>	<p>Scheduled to close COB 10/21</p>
<p><b>Solano County EOC ,</b> EOC , 530 Clay Street , Fairfield , California 94553</p> <p><b>USNG: 10S EH 84187 33790</b></p>	<p>Monday: 0700 PDT - 0700 PDT Tuesday: 0700 PDT - 0700 PDT Wednesday: 0700 PDT - 0700 PDT Thursday: 0700 PDT - 0700 PDT Friday: 0700 PDT - 0700 PDT Saturday: 0700 PDT - 0700 PDT Sunday: 0700 PDT - 0700 PDT</p>	<p><b>Watch</b></p> <p>Phone: 707-784-1600</p>	
<p><b>Sonoma County EOC ,</b> EOC , 2300 County Center Drive , Santa Rosa , California 95403</p> <p><b>USNG: 10S EH 23957 57025</b></p>	<p>Monday: 0700 PDT - 0700 PDT Tuesday: 0700 PDT - 0700 PDT Wednesday: 0700 PDT - 0700 PDT Thursday: 0700 PDT - 0700 PDT Friday: 0700 PDT - 0700 PDT Saturday: 0700 PDT - 0700 PDT Sunday: 0700 PDT - 0700 PDT</p>	<p><b>Watch</b></p> <p>Phone: 707-565-1152</p>	
<p><b>Yolo County EOC ,</b> EOC , 120 West Main Street, Ste. E , Woodland , California 95695</p> <p><b>USNG: 10S FH 07402 81702</b></p>	<p>Monday: 0700 PDT - 0700 PDT Tuesday: 0700 PDT - 0700 PDT Wednesday: 0700 PDT - 0700 PDT Thursday: 0700 PDT - 0700 PDT Friday: 0700 PDT - 0700 PDT Saturday: 0700 PDT - 0700 PDT Sunday: 0700 PDT - 0700 PDT</p>	<p><b>N/A</b></p> <p>Phone: 530-406-4930</p>	
<p><b>Monterey County, EOC ,</b> EOC , 1322 Navidad Rd. , Salinas , CA 93906</p> <p><b>USNG: 10S FF 21829 62270</b></p>	<p>Monday: 0700 PDT - 0700 PDT Tuesday: 0700 PDT - 0700 PDT Wednesday: 0700 PDT - 0700 PDT Thursday: 0700 PDT - 0700 PDT Friday: 0700 PDT - 0700 PDT Saturday: 0700 PDT - 0700 PDT Sunday: 0700 PDT - 0700 PDT</p>	<p><b>N/A</b></p> <p>Phone: 831-796-1905</p>	



<p><b>Paradise Long Term Recovery Office ,</b>  Long Term Recovery Office ,  7204 Skyway ,  Paradise ,  CA 95969</p> <p><b>USNG: 10S FK 18523 02698</b></p>	Monday: 0700 PDT - 1530 PDT Tuesday: 0700 PDT - 1530 PDT Wednesday: 0700 PDT - 1530 PDT Thursday: 0700 PDT - 1530 PDT Friday: 0700 PDT - 1530 PDT Saturday: <b>Closed</b> Sunday: <b>Closed</b>	<p><b>Kenyatta Russell</b></p> Phone: 202-714-2735	
<p><b>Butte County EOC ,</b>  EOC ,  202 Mira Loma Dr. ,  Oroville ,  CA 95965</p> <p><b>USNG: 10S FJ 24426 75704</b></p>	Monday: 0700 PDT - 2000 PDT Tuesday: 0700 PDT - 2000 PDT Wednesday: 0700 PDT - 2000 PDT Thursday: 0700 PDT - 2000 PDT Friday: 0700 PDT - 2000 PDT Saturday: 0700 PDT - 2000 PDT Sunday: 0700 PDT - 2000 PDT	<p><b>N/A</b></p> Phone: 530-624-4729	
<p><b>Butte County MRIC #9 ,</b>  Tractor Supply Company (Parking Lot Only) ,  2000 Feather River Blvd ,  Oroville ,  CA 95965</p> <p><b>USNG: 10S FJ 22866 73489</b></p>	Monday: 1000 PDT - 1600 PDT Tuesday: 1000 PDT - 1600 PDT Wednesday: 1000 PDT - 1600 PDT Thursday: 1000 PDT - 1600 PDT Friday: 1000 PDT - 1600 PDT Saturday: 1000 PDT - 1600 PDT Sunday: <b>Closed</b>	<p><b>Tony Faison</b></p> Phone: 202-531-0458	Scheduled to close COB 10/21
<p><b>Plumas County EOC ,</b>  EOC ,  270 County Hospital Road, Suite 127 ,  Quincy ,  CA 95971</p> <p><b>USNG: 10S FK 73887 24466</b></p>	Monday: 0800 PDT - 2000 PDT Tuesday: 0800 PDT - 2000 PDT Wednesday: 0800 PDT - 2000 PDT Thursday: 0800 PDT - 2000 PDT Friday: 0800 PDT - 2000 PDT Saturday: 0800 PDT - 2000 PDT Sunday: 0800 PDT - 2000 PDT	<p><b>N/A</b></p> Phone: 530-258-6772	
<p><b>Yuba County EOC ,</b>  EOC ,  915 8th Street, Suite 117 ,  Marysville ,  CA 95901</p> <p><b>USNG: 10S FJ 21164 33582</b></p>	Monday: 0700 PDT - 1900 PDT Tuesday: 0700 PDT - 1900 PDT Wednesday: 0700 PDT - 1900 PDT Thursday: 0700 PDT - 1900 PDT Friday: 0700 PDT - 1900 PDT Saturday: 0700 PDT - 1900 PDT Sunday: 0700 PDT - 1900 PDT	<p><b>N/A</b></p> Phone: 530-749-7520	
<p><b>Fresno County EOC ,</b>  EOC ,  333 W Pontiac Way, Bldg 6 ,  Clovis ,  CA 93612</p> <p><b>USNG: 11S KA 57636 74966</b></p>	Monday: 0700 PDT - 0700 PDT Tuesday: 0700 PDT - 0700 PDT Wednesday: 0700 PDT - 0700 PDT Thursday: 0700 PDT - 0700 PDT Friday: 0700 PDT - 0700 PDT Saturday: 0700 PDT - 0700 PDT Sunday: 0700 PDT - 0700 PDT	<p><b>N/A</b></p> Phone: 559-600-6917	
<p><b>Los Angeles County EOC ,</b>  EOC ,  1275 N Eastern Ave ,  Los Angeles ,  CA 90063-3217</p> <p><b>USNG: 11S LT 91629 68500</b></p>	Monday: 0800 PDT - 1800 PDT Tuesday: 0800 PDT - 1800 PDT Wednesday: 0800 PDT - 1800 PDT Thursday: 0800 PDT - 1800 PDT Friday: 0800 PDT - 1800 PDT Saturday: 0800 PDT - 1800 PDT Sunday: 0800 PDT - 1800 PDT	<p><b>Watch</b></p> Phone: 323-459-3779	Undesignated County

<p><b>Tulare County LAC ,</b> 1055 Henderson Ave , Porterville , CA 93257</p> <p><b>USNG: 11S LV 21027 94673</b></p>	<p>Monday: 0800 PDT - 1700 PDT Tuesday: 0800 PDT - 1700 PDT Wednesday: 0800 PDT - 1700 PDT Thursday: 0800 PDT - 1700 PDT Friday: 0800 PDT - 1700 PDT Saturday: 0900 PDT - 1500 PDT Sunday: 0900 PDT - 1500 PDT</p>	<p><b>Misty Gutierrez (S)</b> Phone: 916-516-6207</p>	
<p><b>Shasta County LAC ,</b> 1890 Briggs Street , Anderson , CA 96007</p> <p><b>USNG: 10T EK 58639 78274</b></p>	<p>Monday: 1000 - 1900 Tuesday: 1000 - 1900 Wednesday: 1000 - 1900 Thursday: 1000 - 1900 Friday: 1000 - 1900 Saturday: 1000 - 1900 Sunday: 1000 - 1900</p>	<p><b>Rich Martinez (S)</b> Phone: 916-628-4411</p>	LAC is scheduled to close COB 10/21/2020.
<p><b>County of Santa Clara Office of Emergency Services ,</b> EOC , 55 West Younger Avenue, Suite 450 , San Jose , CA 95110</p> <p><b>USNG: 10S EG 96883 34779</b></p>	<p>Monday: 0800 PDT - 1700 PDT Tuesday: 0800 PDT - 1700 PDT Wednesday: 0800 PDT - 1700 PDT Thursday: 0800 PDT - 1700 PDT Friday: 0800 PDT - 1700 PDT Saturday: 0800 PDT - 1700 PDT Sunday: 0800 PDT - 1700 PDT</p>	<p><b>N/A</b> Phone: 408-808-7800</p>	Remote on weekends
<p><b>Santa Clara County MRIC #11 ,</b> CalFire Smith Creek Fire Station , 2280 Mt. Hamilton Rd , Mt. Hamilton , CA 95140</p> <p><b>USNG: 10S FG 19549 33582</b></p>	<p>Monday: 1000 PDT - 1700 PDT Tuesday: 1000 PDT - 1700 PDT Wednesday: 1000 PDT - 1700 PDT Thursday: 1000 PDT - 1700 PDT Friday: 1000 PDT - 1700 PDT Saturday: 1000 PDT - 1700 PDT Sunday: <b>Closed</b></p>	<p><b>Jesus Ceja</b> Phone: 202-805-6724</p>	Scheduled to close COB 10/21
<p><b>Tulare County MRIC #12 ,</b> 1055 W. Henderson Ave , Porterville , CA 93257</p> <p><b>USNG: 11S LV 16227 94792</b></p>	<p>Monday: 0800 PDT - 1700 PDT Tuesday: 0800 PDT - 1700 PDT Wednesday: 0800 PDT - 1700 PDT Thursday: 0800 PDT - 1700 PDT Friday: 0800 PDT - 1700 PDT Saturday: 0900 PDT - 1500 PDT Sunday: 0900 PDT - 1500 PDT</p>	<p><b>Jadzia Taylor</b> Phone: 202-706-4454</p>	
<p><b>CALOES NEWS DESK ,</b></p>		<p>Phone: 916-800-3943</p>	
<p><b>FEMA NEWS DESK ,</b></p>		<p>Phone: 916-718-8540</p>	

**Command**

Position	S t r i b e	F E M A	O F A	Name	Phone	Work Email
State Coordinating Officer	X			Ryan Buras	916-879-6838	Ryan.Buras@CalOES.ca.gov
Federal Coordinating Officer		X		Willie Nunn	206-437-4403	Willie.Nunn@fema.dhs.gov
Deputy Federal Coordinating Officer		X		Teresa Serata	202-384-6373	teresa.serata@fema.dhs.gov
State Disaster Recover Coordinator	X			Robert Troy	916-328-7581	Robert.Troy@CalOES.ca.gov
Acting Coastal Regional Administrator	X			Lee Dorey	916-203-9175	Lee.Dorey@CalOES.ca.gov
Acting Southern Regional Administrator	X			Jim Acosta	714-795-1271	Jim.Acosta@CalOES.ca.gov
Inland Regional Administrator	X			Tom Graham	916-823-7360	Thomas.Graham@CalOES.ca.gov

**Interagency Recovery Coordination**

Position	ST T r a i b l e	F E M A	O F A	Name	Phone	Work Email
IRC Branch Director	X			Derek Lambeth	916-628-4407	Derek.Lambeth@CalOES.ca.gov
Deputy IRC Branch Director	X			Georges Merceron	916-328-7486	ContractorGeorges.Merceron@CalOES.ca.gov
RSF Support	X			Tony Lacy	916-718-2286	Tony.Lacy@CalOES.ca.gov
RSF Support	X			Stephanie Wallace	916-947-4960	Stephanie.Wallace@CalOES.ca.gov
RSF Coordinator - Health and Social Services (HSS)	X			Melissa Smith	916-328-7471	Melissa.Smith@CalOES.ca.gov
RSF Coordinator - Economic	X			Melissa Hernandez	916-439-9706	Melissa.Hernandez@CalOES.ca.gov
RSF Coordinator - Community Planning and Capacity Building	X			Megan Walton	916-636-3704	Megan.Walton@CalOES.ca.gov
RSF Coordinator - Housing	X			Robyn Cole	916-767-2881	Robyn.Cole@CalOES.ca.gov
RSF Coordinator - Infrastructure Systems	X			Eric Salerno	916-767-2879	Eric.Salerno@CalOES.ca.gov
RSF Coordinator - Natural and Cultural Resources (NCR)	X			Patricia Nelson	916-823-1945	Patricia.Nelson@CalOES.ca.gov

#### Command Staff

Position	ST T r a i b l e	F E M A	O F A	Name	Phone	Work Email
Chief of Staff	X			Dena Wilson	916-704-8791	Dena.Wilson@CalOES.ca.gov
Chief of Staff (JFO)		X		Julie Tsen	202-480-1156	julie.tsen@fema.dhs.gov
Deputy Chief of Staff	X			Carlene Croisdale	916-539-7303	Carlene.Croisdale@CalOES.ca.gov
Safety Officer (Lead)		X		Wayne Baskin	202-826-5959	wayne.baskin@fema.dhs.gov
Safety Officer (JFO)		X		Tuan Ngo	202-717-1471	tuan.q.ngo@fema.dhs.gov
Safety Officer (JFO)		X		Michael Simpson	256-454-6448	michael.simpson@fema.dhs.gov
Legal Advisor	X			Joy Peng	916-845-8971	Joy.Peng@CalOES.ca.gov
Legal Advisor (Remote)		X		Robert Ayres	202-674-6721	robert.ayres@fema.dhs.gov
Executive Assistant (JFO)		X		Danice Wolfe	202-826-3175	danice.wolfe@fema.dhs.gov
Assistant to the FCO		X		Andrew Grant	202-257-5303	andrew.grant@fema.dhs.gov
Administrative Support / Correspondence	X			Makeda Johnson	916-664-2552	Makeda.Johnson@CalOES.ca.gov
Civil Rights Advisor (Remote)		X		James E. Parker	540-431-9579	jamese.parker@fema.dhs.gov
Public Information Officer	X			Jim Kyle	916-591-7593	Jim.Kyle@CalOES.ca.gov
Public Information Officer	X			Alyson Hanner	926-616-1401	Alyson.Hanner@CalOES.ca.gov
Legislative and External Affairs (Tue)	X			Eddie Moreno	916-845-8669	Eddie.Moreno@CalOES.ca.gov
Legislative and External Affairs (Wed)	X			Susan Negrete	916-845-8105	Susan.Negrete@CalOES.ca.gov



External Affairs Officer (JFO)		X		Crystal Payton	202-714-6310	crystal.payton@fema.dhs.gov
Deputy External Affairs Officer (JFO)		X		Ricardo X. (Zuni) Zuniga	571-431-8403	ricardo.zuniga@fema.dhs.gov
External Affairs Intergovernmental/Congressional Affairs Manager (JFO)		X		Stewart Anderson	609-508-2394	stewart.anderson@fema.dhs.gov
SBA PIO			X	Kevin Wynne	916-847-2638	kevin.wynne@sba.gov
SBA PIO			X	Yolanda Stokes	916-200-9813	yolanda.stokes@sba.gov
Tribal Affairs Liaison - DO	X			Pamela Joe	916-628-7572	TribalAffairs@CalOES.ca.gov
Tribal Affairs Liaison (Remote)		X		Christopher Poehlmann	510-627-7285	Christopher.Poehlmann@fema.dhs.gov
Tribal Affairs Coordinator	X			James Griffith	916-825-7088	TribalAffairs@CalOES.ca.gov
Environmental & Historic Preservation Advisor	X			Patricia Nelson	916-823-1945	Patricia.Nelson@CalOES.ca.gov
Environmental & Historic Preservation Advisor (JFO)		X		Emily Benz	940-218-0883	emily.j.benz@fema.dhs.gov
Access and Functional Needs - Remote	X			Vance Taylor	916-205-1630	Vance.Taylor@CalOES.ca.gov
Disability Integration Advisor (JFO)		X		Eve Salstrom	347-626-9554	Eve.salstrom@fema.dhs.gov
Security Manager (JFO )		X		Doug Turner	202-657-1701	douglas.turner@fema.dhs.gov
Peer Support	X			Nikole Schutz	916-709-0434	CovidPeerSupport@SOC.CalOES.ca.gov

## Operations

Position	ST t r a i t b e e	F E M A	O F A	Name	Phone	Work Email
Operations Section Chief	X			Eli Owen	916-214-4132	Eli.Owen@CalOES.ca.gov
Operations Section Chief		X		Jay Denton Gildea	202-320-7179	janston.dentongildea@fema.dhs.gov
Deputy Operations Section Chief	X			Kim Bowman	916-539-5613	ContractorKim.Bowman@CalOES.ca.gov
Deputy Operations Section Chief (JFO)		X		A D Hill III	626-862-1599	arlie.hill@fema.dhs.gov
Geo Ops Planner (Remote)		X		Mark V. Cerney	202-878-2115	mark.cerney@fema.dhs.gov
Operations Advisor	X			John Catching	916-265-8205	John.Catching@CalOES.ca.gov
Operations Specialist	X			Ryan Christen	916-616-7840	ContractorRyan.Christen@CalOES.ca.gov
Mission Assignment Manager (Remote)		X		DeLane Garner	202-717-0926	delane.garner@fema.dhs.gov
Mission Resource Tasking	X			Emi Churchill	916-202-0712	Emi.Churchill@Caloes.ca.gov
Mission Resource Tracking	X			Reuben Bernaldez	916-813-5094	Reuben.Bernaldez@CalOES.ca.gov
Infrastructure Branch Director	X			Vanessa Vaughn	916-926-9859	Vanessa.Vaughn@CalOES.ca.gov
Operations Branch Director-Critical Infrastructure (JFO)		X		Matt Davis	202-718-3340	matthew.davis@fema.dhs.gov
ESF-1 Caltrans	X			Steve Marker	916-208-2349	SOC@DOT.ca.gov

ESF-2 Communications	X			Josh Bozak	916-882-1144	EF2@CalOES.ca.gov
ESF-2 Communications	X			Sophia Munoz	916-952-9450	EF2@CalOES.ca.gov
ESF 2 CISA ECD			X	Artena Moon	916-200-9862	artena.moon@cisa.dhs.gov
ESF - 3 Public Works/Engineering			X	Amy Aton	415-286-6089	amy.t.aton@usace.army.mil
ESF - 3 Public Works/Engineering			X	Jessica Fischer	916-807-0028	jessica.d.fischer@usace.army.mil
ESF-4 OES Fire	X			Chief Bill Bondshu	559-284-1580	Bill.Bondshu@CalOES.ca.gov
ESF 04 Firefighting			X	Tim Dunfee	760-920-7515	timothy.dunfee @usda.gov
ESF 06 Mass Care			X	Luke Beckman	650-740-5853	luke.beckman@redcross.org
ESF 06 Mass Care			X	Denise Everhart	503-936-3263	denise.everhart@redcross.org
ESF 06 Housing and Urban Development (HUD)			X	Ed Ellis	940-453-2861	edward.d.ellis@hud.gov
ESF-8 Health and Medical			X	CAPT Jane Kreis	510-301-2516	Jane.Kreis@fda.hhs.gov
ESF-10 Cal EPA - Remote	X			Jason Boetzer	916-715-3005	Jason.Boetzer@CalEPA.ca.gov
ESF-10 Cal EPA - Remote	X			Kristi Placencia	916-601-7845	Kristi.Placencia@CalEPA.ca.gov
ESF 10 Hazardous Materials			X	Bill Jones	619-806-6737	jones.bill@epa.gov
ESF-11 CDFA - Remote	X			Asha Raj	916-216-1913	Asha.Raj@CDFA.ca.gov
ESF - 11 Agriculture			X	Todd Smith	970-631-3279	todd.l.smith@usda.gov
ESF-12 CUEA - Remote	X			Don Boland	916-717-7570	Don.Boland@CalOES.ca.gov
ESF-12 CUEA - Remote	X			Jenny Regino	916-709-6708	Jenny.Regino@CalOES.ca.gov
ESF-12 PG&E Representative			X	Jeffrey Briggs	209-996-8186	Jeffrey.Briggs@PGE.com
ESF-13 OES Law	X			Deputy Chief Gary Yandell	916-767-8793	Gary.Yandell@CalOES.ca.gov
ESF-13 OES Law - LDO	X			AC Dennis Smithson	916-317-0397	Dennis.Smithson@CalOES.ca.gov
ESF-13 OES Law - LEOC/Field	X			AC Celeste Fowler	559-284-2203	Celeste.Fowler@CalOES.ca.gov
ESF-13 OES Law - LEOC	X			AC Sheldon Fung	916-798-5311	Sheldon.Fung@CalOES.ca.gov
ESF-13 OES Law - LEOC	X			AC Tom Anzelmo	916-531-9484	Tom.Anzelmo@CalOES.ca.gov
ESF-13 OES Law - LEOC	X			AC Steve Schory	(916) 809-6185	Steve.Schory@CalOES.ca.gov
ESF-13 OES Law - Glass/Boysen Fire	X			AC Jim Linn	510-725-5085	Jim.Linn@CalOES.ca.gov
ESF-13 OES Law - Slater/Zogg Fires	X			AC Ron Quigley	530-526-0922	Ron.Quigley@CalOES.ca.gov
ESF-13 OES Law - Shady Fire	X			AC Greg Smith	510-207-8976	Greg.Smith@CalOES.ca.gov
Northern Branch I Director	X			Cole Glenwright	916-425-0302	Cole.Glenwright@CalOES.ca.gov
Northern Branch I Director (JFO AWS)		X		Tex Burns	404-695-1614	therron.burns@fema.dhs.gov
Deputy Northern Branch I Director	X			Baylor Cartica	916-926-1477	Baylor.Cartica@CalOES.ca.gov

Deputy Northern Branch I Director	X		Amber Lane	916-824-6355	Amber.Lane@CalOES.ca.gov
Butte County Division	X		Kim Nielsen	916-616-1403	Kim.Nielsen@CalOES.ca.gov
Butte County Division (EOC Sonoma Co.)		X	Rita Bazazzadeh	202-316-7842	rita.bazazzadeh@fema.dhs.gov
Plumas County Division	X		Rod Daugherty	916-612-4242	Rod.Daugherty@CalOES.ca.gov
Plumas County Division (EOC Sonoma Co.)		X	Rita Bazazzadeh	202-316-7842	rita.bazazzadeh@fema.dhs.gov
Yuba County Division	X		Lindsey Stanley	916-995-9372	Lindsey.Stanley@CalOES.ca.gov
Yuba County Division (EOC Butte Co.)		X	Dennis Orbus	202-716-9811	dennis.orbus@fema.dhs.gov
Nevada County Division	X		Sarah Murdock	916-661-0329	Sarah.Murdock@CalOES.ca.gov
Nevada County Division (EOC Butte Co.)		X	Dennis Orbus	202-716-9811	dennis.orbus@fema.dhs.gov
Siskiyou County Division	X		Robert Goyeneche	916-694-9906	Robert.Goyeneche@CalOES.ca.gov
Siskiyou County Division (Yreka, CA AWS)		X	Jack Smith	202-705-9181	jack.smith1@fema.dhs.gov
Lassen County Division	X		Rod Daugherty	916-612-4242	Rod.Daugherty@CalOES.ca.gov
Lassen County Division (EOC Monterey Co.)		X	Glenn Bowles	202-288-6204	glenn.bowlesII@fema.dhs.gov
Shasta County Division	X		Lindsey Stanley	916-995-9372	Lindsey.Stanley@CalOES.ca.gov
Tuolumne County Division	X		TBD	TBD	TBD
Trinity County Division			Robert Goyeneche	916-694-9906	Robert.Goyeneche@CalOES.ca.gov
Sierra County Division	X		TBD	TBD	TBD
Inland Branch II Director	X		John Melendez	916-601-2649	John.Melendez@CalOES.ca.gov
Inland Branch II Director (EOC Napa Co. AWS)		X	Jon Bajon	609-752-9843	jon.bajon@fema.dhs.gov
Deputy Inland Branch II Director	X		Sean Rose	916-384-6419	Sean.Rose@CalOES.ca.gov
Lake County Division	X		Garrett Thomsen	916-206-1470	Garrett.Thomsen@CalOES.ca.gov
Lake County Division (EOC Napa Co. AWS)		X	Jon Bajon	609-752-9843	jon.bajon@fema.dhs.gov
Solano County Division	X		Jennifer Gordon	916-698-1470	Jennifer.Gordon@CalOES.ca.gov
Solano County Division (EOC Sonoma Co.)		X	Terrence Williamson	256-454-6461	terrence.williamson@fema.dhs.gov
Yolo County Division	X		Kyle Noderer	916-709-5492	Kyle.Noderer@CalOES.ca.gov
Yolo County Division (EOC Sonoma Co.)		X	Terrence Williamson	256-454-6461	terrence.williamson@fema.dhs.gov
Napa County Division	X		Memoree McIntire	510-220-0185	Memoree.McIntire@CalOES.ca.gov
Napa County Division (EOC Napa Co. AWS)		X	Jon Bajon	609-752-9843	Jon.Bajon@fema.dhs.gov
Sonoma County Division	X		Sarah Finnigan	707-330-6240	Sarah.Finnigan@CalOES.ca.gov
Sonoma County Division		X	Terrence Williamson	256-454-6461	terrence.williamson@fema.dhs.gov
Mendocino County Division	X		Garrett Thomsen	916-206-1470	Garrett.Thomsen@CalOES.ca.gov
Bay Branch III Director	X		Kendra Bowyer	916-214-2043	Kendra.Bowyer@CalOES.ca.gov

Bay Branch III Director (EOC Santa Cruz Co.)		X		Fred Wehrenburg	510-316-7636	fred.wehrenburg@fema.dhs.gov
Deputy Branch Director (EOC Santa Cruz Co.)		X		Will Alexander	202-322-3280	will.alexander@fema.dhs.gov
Santa Cruz County Division	X			Byron Green	916-330-0933	Byron.Green@CalOES.ca.gov
Santa Cruz County Division		X		Fred Wehrenburg	510-316-7636	fred.wehrenburg@fema.dhs.gov
San Mateo County Division	X			Gabe Kearney	916-926-952	Gabe.Kearney@CalOES.ca.gov
San Mateo County Division		X		Brian Cox	202-689-7842	brianj.cox@fema.dhs.gov
Monterey County Division	X			Kelly Riley	916-500-2544	Kelly.Riley@CalOES.ca.gov
Monterey County Division (EOC Santa Cruz Co.)		X		Fred Wehrenburg	510-316-7636	fred.wehrenburg@fema.dhs.gov
Santa Clara County Division	X			Brian Buckhout	916-628-5897	Brian.Buckhout@CalOES.ca.gov
Santa Clara County Division		X		Darrell Burton	510-421-8790	darrell.burton@fema.dhs.gov
Southern Branch IV Director	X			Elise Arata	916-628-0371	Elise.Arata@CalOES.ca.gov
Southern Branch IV Director (JFO AWS)		X		Dave Winterle	202-368-1604	david.winterle@fema.dhs.gov
Deputy Southern Branch IV Director	X			Mike Grasso	916-612-3018	Mike.Grasso@CalOES.ca.gov
San Bernardino County Division		X		TBD	TBD	TBD
San Bernardino County Division (JFO)		X		Paul Tashjian	718-747-4455	paul.tashjian@fema.dhs.gov
San Diego County Division		X		TBD	TBD	TBD
San Diego County Division (JFO)		X		Paul Tashjian	718-747-4455	paul.tashjian@fema.dhs.gov
Tulare County Division	X			Patti Tran	916-709-3497	Patti.Tran@CalOES.ca.gov
Tulare County Division (EOC Fresno Co.)		X		Glenn Irish	202-701-8931	glenn.irish@fema.dhs.gov
Los Angeles County Division		X		TBD	TBD	TBD
Los Angeles County Division (JFO)		X		Paul Tashjian	718-747-4455	paul.tashjian@fema.dhs.gov
Madera County Division	X			Walt Kent	916-396-9292	Walt.Kent@CalOES.ca.gov
Madera County Division (EOC Fresno Co.)		X		Glenn Irish	202-701-8931	glenn.irish@fema.dhs.gov
Fresno County Division	X			Walt Kent	916-396-9292	Walt.Kent@CalOES.ca.gov
Fresno County Division (EOC Fresno Co.)		X		Glenn Irish	202-701-8931	glenn.irish@fema.dhs.gov
Public Assistance Branch Director	X			Robbie Larsen	916-600-3126	Robert.Larsen@CalOES.ca.gov
Public Assistance Branch Director (Remote)		X		John Christensen	510-520-1345	John.Christensen2@fema.dhs.gov
Public Assistance Task Force Lead - Branch IV	X			Nicholas Vaquero	916-531-5906	Nicholas.Vaquero@CalOES.ca.gov
Program Delivery Manager (PDMG) - Branch I	X			Scott Wagner	916-823-2260	Scott.Wagner@CalOES.ca.gov
Program Delivery Manager (PDMG) - Branch II	X			Derick Earl	916-767-2724	Derick.Earl@CalOES.ca.gov
Program Delivery Manager (PDMG) - Branch III	X			Simon Pissi	916-823-2932	Simon.Pissi@CalOES.ca.gov
Program Delivery Manager (PDMG) - Branch IV	X			Clyde Muraoka	562-795-2925	Clyde.Muraoka@CalOES.ca.gov
Hazard Mitigation Branch Director	X			Jason Williams	916-206-2116	Jason.Williams@CalOES.ca.gov

Hazard Mitigation Branch Director (JFO)		X		Diane Earl	732-208-6261	diane.earl@fema.dhs.gov
Deputy Hazard Mitigation Branch Director	X			Justin Barnes	541-591-1494	ContractorJustin.Barnes@CalOES.ca.gov
Hazard Mitigation Staff	X			Noah Aiona	916-516-6164	Noah.Aiona@CalOES.ca.gov
Hazard Mitigation Staff	X			Esteban Hollister	916-661-0339	Esteban.Hollister@CalOES.ca.gov
Hazard Mitigation Staff	X			Lorin Sabin	916-539-9480	Lorin.Sabin@CalOES.ca.gov
Hazard Mitigation Staff	X			James Cota	916-224-8452	James.Cota@CalOES.ca.gov
Hazard Mitigation Staff	X			Jan Stout	916-823-6643	Jan.Stout@CalOES.ca.gov
Hazard Mitigation Staff	X			Karen McCready	916-216-1751	Karen.McCready-Hoover@CalOES.ca.gov
Disaster Survivor Assistance Branch Director (JFO AWS)		X		Julius Gibbons	202-805-6325	Julius.Gibbons@fema.dhs.gov
Disaster Survivor Assistance Deputy Branch Director (JFO AWS)		X		Lucy Baker	940-231-8682	luzvary.baker@fema.dhs.gov
Disaster Survivor Assistance Group Supervisor (JFO AWS)		X		Kenneth Smith	202-805-6314	kennethl.smith@fema.dhs.gov
Disaster Survivor Assistance Group Supervisor (JFO AWS)		X		Diann Easterling	202-714-7278	judith.easterling@fema.dhs.gov
DSA Task Force Leader (LAC/MRIC #4)		X		Cindy Shepherd	609-534-3094	cindy.shepherd@fema.dhs.gov
DSA Crew Leader 1 (LAC/MRIC #4)		X		Jadzia Taylor	202-706-4454	jadzia.taylor@fema.dhs.gov
DSA Crew Leader 3 (JFO AWS)		X		Brandon Perez Rivera	202-701-4535	brandon.perezrivera@fema.dhs.gov
DSA Crew Leader 4 (LAC/MRIC #4)		X		Kayla Rahimi	202-664-7107	kayla.rahimi@fema.dhs.gov
DSA Crew Leader 5 (JFO AWS)		X		Mary Czaplinski	609-575-1449	mary.czaplinski@fema.dhs.gov
DSA Crew Leader 7 (AWS EOC Santa Cruz Co)		X		Laura Perry	202-368-5592	LAURA.PERRY@FEMA.DHS.GOV
DSA Crew Leader 9 (LAC/MRIC #4)		X		Sedarick Turner	202-705-7431	sedarick.turner@fema.dhs.gov
Individual Assistance Branch Director	X			Emilie Hill	916-823-1081	Emilie.Hill@CalOES.ca.gov
Individual Assistance Branch Director (JFO)		X		Jesus Ceja	202-805-6724	Jesus.Ceja@fema.dhs.gov
Deputy Individual Assistance Branch Director - Branch I & III	X			Katrina Palomar	916-494-8138	Katrina.Palomar@CalOES.ca.gov
Deputy Individual Assistance Branch Director - Branch II & IV	X			Nicole Benson	916-767-2954	Nicole.Benson@CalOES.ca.gov
Deputy Individual Assistance Branch Director (JFO)		X		Shahdy Monemzadeh	202-230-7389	shahdy.monemzadeh@fema.dhs.gov
Deputy Individual Assistance Branch Director (JFO)		X		Magda De La Matta	510-332-5182	magda.de-la-matta@fema.dhs.gov
Deputy Individual Assistance Branch Director (JFO)		X		Michael Cosbar	703-254-9734	michael.cosbar@fema.dhs.gov
SBA Office in Charge			X	Michael Brown	916-216-9792	michael.brown@SBA.gov
Disaster Recovery Center (MRIC) Group Supervisor (JFO)		X		Stephanie Nash	202-550-5964	Stephanie.Nash@fema.dhs.gov
Individual Assistance Group Supervisor (JFO)		X		Tina Rafferty	202-805-8531	Tina.Rafferty@fema.dhs.gov
Individual Assistance LAC/MRIC Coordinator	X			Summer Wright	916-715-3558	Summer.Wright@CalOES.ca.gov
Individual Assistance LAC/MRIC Coordinator	X			Brad Harrelson	916-531-3793	ContractorBrad.Harrelson@CalOES.ca.gov



Individual Assistance Support	X		Becca Berggren	916-340-5893	Becca.Berggren@CalOES.ca.gov
Individual Assistance Support	X		Tiffany Facino	916-926-9851	Tiffany.Facino@caloes.ca.gov
Individual Assistance Support	X		Veronica Silva	916-879-5186	Veronica.Silva@CalOES.ca.gov
Recovery Analyst	X		Jacob Fraker	916-612-7133	Jacob.Fraker@CalOES.ca.gov
MRIC Task Force Leader (LAC/MRIC #1)		X	Ahmad Page	202-550-7616	ahmad.page@fema.dhs.gov
LAC Liaison - Napa County	X		Adriane Ceballos	916-823-6474	Adriane.Ceballos@CalOES.ca.gov
LAC Liaison - Tulare County	X		Misty Gutierrez	916-516-6207	Misty.Gutierrez@CalOES.ca.gov
LAC Liaison - Shasta County	X		Rich Martinez	916-628-4411	Richard.Martinez@CalOES.ca.gov
MRIC #4 Manager - Santa Cruz County		X	Linda Durall	202-809-1690	linda.durall@fema.dhs.gov
MRIC #9 Manager - Butte County		X	Tony Faison	202-531-0458	tony.faison@fema.dhs.gov
Voluntary Agency Liaison (VAL) Group Supervisor (JFO)		X	Colleen Zaremba	510-424-1426	colleen.zaremba@fema.dhs.gov
Information Management (IM) Group Supervisor (Remote)		X	Karen Reichensperger	218-365-7462	karen.reichensperger@fema.dhs.gov
Task Force Lead	X		Bill Simonson	916-539-0333	Bill.Simonson@CalOES.ca.gov
Debris Task Force - Lead	X		Robbie Larsen	916-600-3126	Robert.Larsen@CalOES.ca.gov
Debris Task Force - Lead / Bay Branch Debris Ops Branch Director	X		Kendra Bowyer	916-214-2043	Kendra.Bowyer@CalOES.ca.gov
Santa Cruz County Liaison	X		Byron Green	916-330-0933	Byron.Green@CalOES.ca.gov
San Mateo County Liaison	X		Gabe Kearney	916-926-9542	Gabe.Kearney@CalOES.ca.gov
Monterey County Liaison	X		Kelly Riley	916-500-2544	Kelly.Riley@CalOES.ca.gov
Santa Clara County Liaison	X		Brian Buckhout	916-628-5897	Brian.Buckhout@CalOES.ca.gov
Debris Task Force - Lead / Northern Branch Debris Ops Branch Director	X		Cole Glenwright	916-425-0302	Cole.Glenwright@CalOES.ca.gov
Butte County Liaison	X		Kim Nielsen	916-616-1403	Kim.Nielsen@CalOES.ca.gov
Plumas County Liaison	X		Rod Daugherty	916-612-4242	Rod.Daugherty@CalOES.ca.gov
Yuba County Liaison	X		Lindsey Stanley	916-995-9372	Lindsey.Stanley@CalOES.ca.gov
Nevada County Liaison	X		Sarah Murdock	916-661-0329	Sarah.Murdock@CalOES.ca.gov
Siskiyou County Liaison	X		Robert Goyeneche	916-694-9906	Robert.Goyeneche@CalOES.ca.gov
Lassen County Liaison	X		Rod Daugherty	916-612-4242	Rod.Daugherty@CalOES.ca.gov
Shasta County Liaison			Lindsey Stanley	916-995-9372	Lindsey.Stanley@CalOES.ca.gov
Trinity County Liaison			Robert Goyeneche	916-694-9906	Robert.Goyeneche@CalOES.ca.gov
Tuolumne County Liaison			TBD	TBD	TBD
Sierra County Liaison			TBD	TBD	TBD
Inland Branch Debris Ops Branch Director	X		John Melendez	916-601-2649	John.Melendez@CalOES.ca.gov

Solano County Liaison	X		Jennifer Gordon	916-698-1470	Jennifer.Gordon@CalOES.ca.gov
Napa County Liaison	X		Memoree McIntire	510-220-0185	Memoree.McIntire@CalOES.ca.gov
Sonoma County Liaison	X		Sarah Finnigan	707-330-6240	Sarah.Finnigan@CalOES.ca.gov
Lake County Liaison	X		Garrett Thomsen	916-206-1470	Garrett.Thomsen@CalOES.ca.gov
Yolo County Liaison	X		Kyle Noderer	916-709-5492	Kyle.Noderer@CalOES.ca.gov
Mendocino County Liaison	X		Garrett Thomsen	916-206-1470	Garrett.Thomsen@CalOES.ca.gov
Southern Branch Debris Ops Branch Director	X		Elise Arata	916-628-0371	Elise.Arata@CalOES.ca.gov
Fresno County Liaison	X		Walt Kent	916-396-9292	Walt.Kent@CalOES.ca.gov
Los Angeles County Liaison	X		TBD	TBD	TBD
Madera County Liaison	X		Walt Kent	916-396-9292	Walt.Kent@CalOES.ca.gov
San Bernardino County Liaison	X		TBD	TBD	TBD
San Diego County Liaison	X		TBD	TBD	TBD
Tulare County Liaison	X		Patti Tran	916-709-3497	Patti.Tran@CalOES.ca.gov
Debris Task Force (Remote)		X	Joseph Grunditz	202-924-7061	joseph.grunditz@fema.dhs.gov
Watershed/Debris Flow Task Force	X		Jennifer Hogan	916-833-6164	Jennifer.Hogan@CalOES.ca.gov
Watershed/Debris Flow Task Force (Remote)		X	Eric Simmons	510-928-5531	eric.simmons@fema.dhs.gov
Watershed/Debris Flow TF - Co-Lead	X		Jason Spotts	916-845-8244	Jason.Spotts@CalOES.ca.gov
Housing Task Force Lead	X		Katrina Palomar	916-494-8138	Katrina.Palomar@CalOES.ca.gov
Housing Task Force (JFO)		X	Tina Rafferty	202-805-8531	tina.rafferty@fema.dhs.gov
Deputy Housing Task Force Lead	X		Leah Lanier	916-823-1081	ContractorLeah.Lanier@CalOES.ca.gov
Housing Task Force Support	X		Kristie Stevens	916-539-3996	ContractorKristie.Stevens@CalOES.ca.gov
Mass Care and Shelter Task Force Lead - Remote	X		Brian Lussier	916-869-8890	Brian.Lussier@DSS.ca.gov
Mass Care and Shelter Task Force Lead (JFO)		X	Bea Riddle	225-910-5156	bea.riddle@fema.dhs.gov
Mass Care and Shelter Task Force - Remote	X		JR Antablian	916-247-1361	George.Antablian@DSS.ca.gov
Mass Care and Shelter Task Force / DO - Remote	X		Mathias Wakefield	916-869-9667	Mathias.Wakefield@DSS.ca.gov
Mass Care and Shelter Task Force - Remote	X		Alex Shariatmadari	916-247-6403	Alex.Shariatmadari@DSS.ca.gov
Mass Care and Shelter Task Force - Remote	X		Jeremey Horan	916-206-1907	Jeremey.Horan@CalOES.ca.gov
Mass Care and Shelter Task Force - Remote	X		Kenneth Wong	916-605-6497	Kenneth.Wong@DGS.ca.gov
Mass Care and Shelter Task Force - Remote	X		Janice Winston	215-806-0300	Janice.Winston@RedCross.org
Mass Care and Shelter Task Force - Remote	X		Jennifer Dulay	916-200-8640	Jennifer.Dulay@DSS.ca.gov
Mass Care and Shelter Task Force - Remote	X		Adriana Flores	916-869-8890	Adriana.Flores@DSS.ca.gov
Mass Care and Shelter Task Force - Remote			Tarah Heller	916-204-1523	Tarah.Heller@DSS.ca.gov
Operations Branch Director - Mass Care (JFO)		X	Laura Pickens	202-465-0327	laura.pickens@fema.dhs.gov

Mass Care and Sheltering Group Supervisor (JFO AWS)		X		Jaime Brown	202-215-0307	jaime.brown@fema.dhs.gov
Schools Task Force Lead	X			Lynne Olson	916-919-3016	Lynne.Olson@CalOES.ca.gov
Schools Task Force Lead	X			Lisa Constancio	TBD	LConstancio@CDE.ca.gov
Schools Task Force - CDE	X			Juan Mireles	916-445-2144	JMireles@CDE.ca.gov
Schools Task Force - CDE	X			Lesley Taylor	916-806-1130	LTaylor@CDE.ca.gov
CCC Representative - Remote	X			Ray Garcia	916-599-1415	Emergency.Services@CCC.ca.gov
CCC Representative - Remote	X			Michaela Hayden	916-599-1415	Emergency.Services@CCC.ca.gov
CNG Representative (0700 - 1400)	X			LTC Steve Cassagrande	916-636-3724	CMDSOCLNO@Gmail.com
CNG Representative (1400-1900)	X			Ralph Cansimbe	916-636-3724	CMDSOCLNO@Gmail.com
CalOES Operations Inbox	X			N/A	N/A	JFOOperations@CalOESEOC.onmicrosoft.com
Safety Director		X		Wayne Baskin	202-826-5959	wayne.baskin@fema.dhs.gov

### Logistics

Position	S T r i t b e e	F E M A	O F A	Name	Phone	Work Email
Logistics Section Chief	X			Chris Hacker	916-261-4541	Chris.Hacker@CalOES.ca.gov
Logistics Section Chief (JFO)		X		Carol McKinney	202-809-3750	carol.mckinney@fema.dhs.gov
Deputy Logistics Section Chief	X			Dave Grumney	916-247-6393	ContractorDave.Grumney@CalOES.ca.gov
Support Branch Director	X			Ryan Sutliff	916-207-5941	Ryan.Sutliff@CalOES.ca.gov
Support Branch Director (JFO)		X		Paul Bauer	510-289-2122	paul.bauer@fema.dhs.gov
Procurement - DGS	X			TBD	TBD	TBD
Facilities Unit Lead	X			Reuben Armenta	916-823-6503	Reuben.Armenta@CalOES.ca.gov
Facilities Unit Leader (JFO)		X		Holli Griffiths	202-718-1156	holli.l.griffiths@fema.dhs.gov
Administrative Support	X			Aman Thiara	916-694-7146	Aman.Thiara@CalOES.ca.gov
Logistics Support - Chico State Housing	X			John Casillas	916-926-1371	John.Casillas@CalOES.ca.gov
Service Branch Director	X			Doug Sabin	916-200-9801	Doug.Sabin@CalOES.ca.gov
Service Branch Director (JFO)		X		Robert Drew	202-716-7431	robert.drew@fema.dhs.gov
Communications Unit Leader (JFO)		X		David Mascitelli	202-714-6750	David.Mascitelli@fema.dhs.gov
Client Support (IT)	X			Christian Gonzalez	916-767-2882	Christian.Gonzalez@CalOES.ca.gov
Client Support (IT)	X			Luis Herrera	916-531-6091	Luis.Herrera@CalOES.ca.gov
Accountable Property Manager (JFO)		X		Richard Piedrahita	540-431-7490	richard.piedrahita@fema.dhs.gov
External Branch Director (JFO)		X		Kawai Ko	510-332-1708	kawai.ko@fema.dhs.gov
Ordering Inbox		X		N/A	N/A	fema-dr4558-ordering@fema.dhs.gov

### Planning

Position	S T r i t b e e	F E M A	O F A	Name	Phone	Work Email
Planning Section Chief	X			Nicole Erlichman	916-291-7264	Nicole.Erlichman@CalOES.ca.gov
Planning Section Chief		X		Anthony Trimble	202-445-5104	anthony.trimble@fema.dhs.gov
Deputy Planning Section Chief	X			Nikko Quiggins	916-926-1093	ContractorNikko.Quiggins@CalOES.ca.gov

Deputy Planning Section Chief (Remote)		X		Tara Moore	202-705-9858	tara.moore1@fema.dhs.gov
Situation Unit Lead	X			Jessica London	916-539-6960	ContractorJessica.London@CalOES.ca.gov
Situation Unit Leader (Remote)		X		Arlett Carmona	202-812-6699	arlett.carmona@fema.dhs.gov
Situation Unit Support	X			Terry Boes	916-208-0611	ContractorTerry.Boes@CalOES.ca.gov
Planning Support Unit Lead	X			Gina Avelar	951-850-4799	Gina.Avelar@CalOES.ca.gov
Planning Support Unit Leader (JFO)		X		Gary Neilson	202-320-0148	gary.neilson@fema.dhs.gov
Resource Unit Leader (JFO)		X		Sade Long	202-717-1910	sade.d.long@fema.dhs.gov
Documentation Unit Leader (Remote)		X		Tara Moore	202-705-9858	tara.moore1@fema.dhs.gov
GIS Unit Leader (Remote)		X		Steve Bryson	510-725-7717	stephen.bryson@fema.dhs.gov
Critical Infrastructure Protection Unit	X			Brian Lawrence	510-209-5950	Brian.Lawrence@CalOES.ca.gov
Social Media Monitoring (Tue)	X			Jesse Auld	415-2034743	Jesse.Auld@CalOES.ca.gov
Social Media Monitoring (Wed)	X			Joseph Tice	302-757-3876	Joseph.Tice@CalOES.ca.gov
NOAA Liaison (NWS)			X	Sarah Rogowski	703-965-5370	NWS.CalOES.SOC@NOAA.gov
Cal OES Planning Inbox	X			N/A	N/A	JFOPlans@CalOESEOC.onmicrosoft.com
FEMA Planning Inbox		X		N/A	N/A	fema-r9-cawildfire-planning@fema.dhs.gov

#### Finance & Administration

Position	S T r i b e e	F E M A	O F A	Name	Phone	Work Email
Finance and Administration Section Chief	X			Desitny Saechou	916-612-3878	Destiny.Saechou@CalOES.ca.gov
Comptroller (Remote)		X		Kenneth Kersting	202-615-8739	kenneth.kersting@fema.dhs.gov
Finance and Administration Section Chief (Remote)		X		John Svolos	202-702-5253	john.svolos@fema.dhs.gov
Deputy Finance and Administration Section Chief	X			Daniel Stone	916-767-3051	Daniel.Stone@CalOES.ca.gov
Deputy Finance and Administration Section Chief		X		Brian Rodriguez	510-388-9293	brian.rodriguez@fema.dhs.gov
Travel Manager (JFO)		X		Patrick Scanlon	225-278-2506	patrick.scanlon@fema.dhs.gov
HR Manager (JFO)		X		Carol P Smith	202-430-4346	carol.p.smith@fema.dhs.gov
Field Support Unit Leader (JFO)		X		Cherina Griffin	202-717-6438	cherina.griffin@fema.dhs.gov

**4. Prepared by:** Gina Avelar, PSUL  
**Date/Time:** 10/19/2020 1447

**5. Reviewed by:** Nicole Erlichman, PSC  
**Date/Time:** 10/19/2020 1447

# COMMAND ORGANIZATION CHART

**1. Incident Name**  
2020 July/August/September  
Statewide Fires

**2. Date/Time Prepared**  
10/19/2020

**3. Operational Period Date/Time**  
0700 10/20/2020-  
0700 10/22/2020



**UNIFIED COORDINATION GROUP (UCG)**

**State Coordinating Officer**  
Ryan Buras (S)  
**Federal Coordinating Officer**  
Willie Nunn (F)

**Administrative Support/  
Correspondence**  
Makeda Johnson (S)

**State Disaster Recovery Coordinator**  
Robert Troy (S)  
**Deputy Federal Coordinating Officer**  
Teresa Serata (F)

**Chief of Staff**  
Dena Wilson (S)  
Julie Tsen (F)  
**Deputy Chief of Staff**  
Carlene Croisdale (S)

**Safety Officer**  
Wayne Baskin (F)

**Public Information Officer**  
Jim Kyle (S)  
**Leg & External Affairs**  
Eddie Moreno (S) (Tue)  
Susan Negrete (S) (Wed)  
**External Affairs Officer**  
Crystal Payton (F)  
**Deputy External Affairs Officer**  
Ricardo Zuniga (F)  
**Intergovernmental/Congressional Affairs Manager**  
Stewart Anderson (F)  
**SBA PIO**  
Kevin Wynne (OFA)  
Yolanda Stokes (OFA)

**AFN/DIA**  
Vance Taylor (S)  
Eve Salstrom (F)  
**Legal Advisor**  
Joy Peng (S)  
Robert Ayres (F)  
**Tribal Liaison**  
Pamela Joe (S)  
Christopher Poehlmann (F)  
Remote  
**Executive Assistant**  
Danice Wolfe (F)

**Assistant to the FCO**  
Andrew Grant (F)  
**Environmental & Historic  
Preservation Advisor**  
Patricia Nelson (S)  
Emily Benz (F)  
**Security Manager**  
Doug Turner (F)  
**Civil Rights Advisor**  
James E. Parker (F) Remote

**Operations Section Chief**  
Eli Owen (S)  
Jay Denton Gidea (F)  
**Deputy Operations Section Chief**  
Kim Bowman (S)  
A. D. Hill III (F)

**Logistics Section Chief**  
Chris Hacker (S)  
Carol McKinney (F)  
**Deputy Logistics Section Chief**  
Dave Grumney (S)

**Planning Section Chief**  
Nicole Erlichman (S)  
Anthony Trimble (F)  
**Deputy Planning Section Chief**  
Nikko Quiggins (S)  
Tara Moore (F)

**Finance Section Chief**  
Destiny Saechou (S)  
**Comptroller**  
Kenneth Kersting (F)  
**Finance Section Chief**  
John Svols (F)  
**Deputy Finance Section Chief**  
Daniel Stone (S)  
Brian Rodriguez (F)

**Operations**  
(See Operations  
Organization Chart)

**Logistics**  
(See Logistics  
Organization Chart)

**Planning**  
(See Planning  
Organization Chart)

**Travel Manager**  
Pat Scanlon (F)

**ICS-207**

**4. Prepared By:** Gina Avelar, PSUL

**5. Reviewed By:** Nicole Erlichman, PSC



# OPERATIONS ORGANIZATION CHART

**1. Incident Name**  
2020 July/August/September  
Statewide Fires

**2. Date/Time Prepared**  
10/19/2020

**3. Operational Period Date/Time**  
0700 10/20/2020-  
0700 10/22/2020



**Special Advisor to Operations**  
John Catching  
Jeremy Daly

**Operations Section Chief**  
Eli Owen (S)  
Jay Denton Gildea (F)  
**Deputy Operations Section Chief**  
Kim Bowman (S)  
A. D. Hill III (F)

**Field Operations**  
(See Field Operations Organization Chart)

**Task Forces**  
(See Task Force Organization Chart)

**Operations Specialist**  
Ryan Christen (S)  
**Mission Assignment Manager**  
DeLane Gamer (F)  
**Mission Resource Tasking**  
Emi Churchill (S)  
Reuben Bernaldez (S)  
Gabby Blottie (S)

**Infrastructure Branch Director**  
Vanessa Vaughn (S)  
Matt Davis (F)

**Hazard Mitigation Branch Director**  
Jason Williams (S)  
Diane Earl (F)

**Disaster Survivor Assistance Branch Director**  
Julius Gibbons (F)  
**Deputy DSA Branch Director**  
Kenneth Smith (F)

**Interagency Recovery Coordination Branch Director**  
Derek Lambeth (S)  
**Deputy Interagency Recovery Coordination Branch Director**  
Georges Merceron (S)

**Individual Assistance Branch Director**  
Emilie Hill (S)  
Jesus Ceja (F)(Remote)  
**Deputy Individual Assistance Branch Director**  
Katrina Palomar (S) Branch I & III  
Nicole Benson (S) Branch II & IV  
Shahdy Monemzadeh (F)  
Magda De La Matta (F)  
Michael Cosbar (F)

**Public Assistance Branch Director**  
Robbie Larsen (S)  
John Christensen (F)

**Infrastructure**  
(See Infrastructure Branch Organization Chart)

**Infrastructure**  
(See Infrastructure Branch Organization Chart)

**DSA**  
(See DSA Branch Organization Chart)

**IRC**  
(See IRC Branch Organization Chart)

**Individual Assistance**  
(See Individual Assistance Branch Organization Chart)

**Infrastructure**  
(See Infrastructure Branch Organization Chart)

Pending Activation

**ICS-207**

**4. Prepared By:** Gina Avelar, PSUL

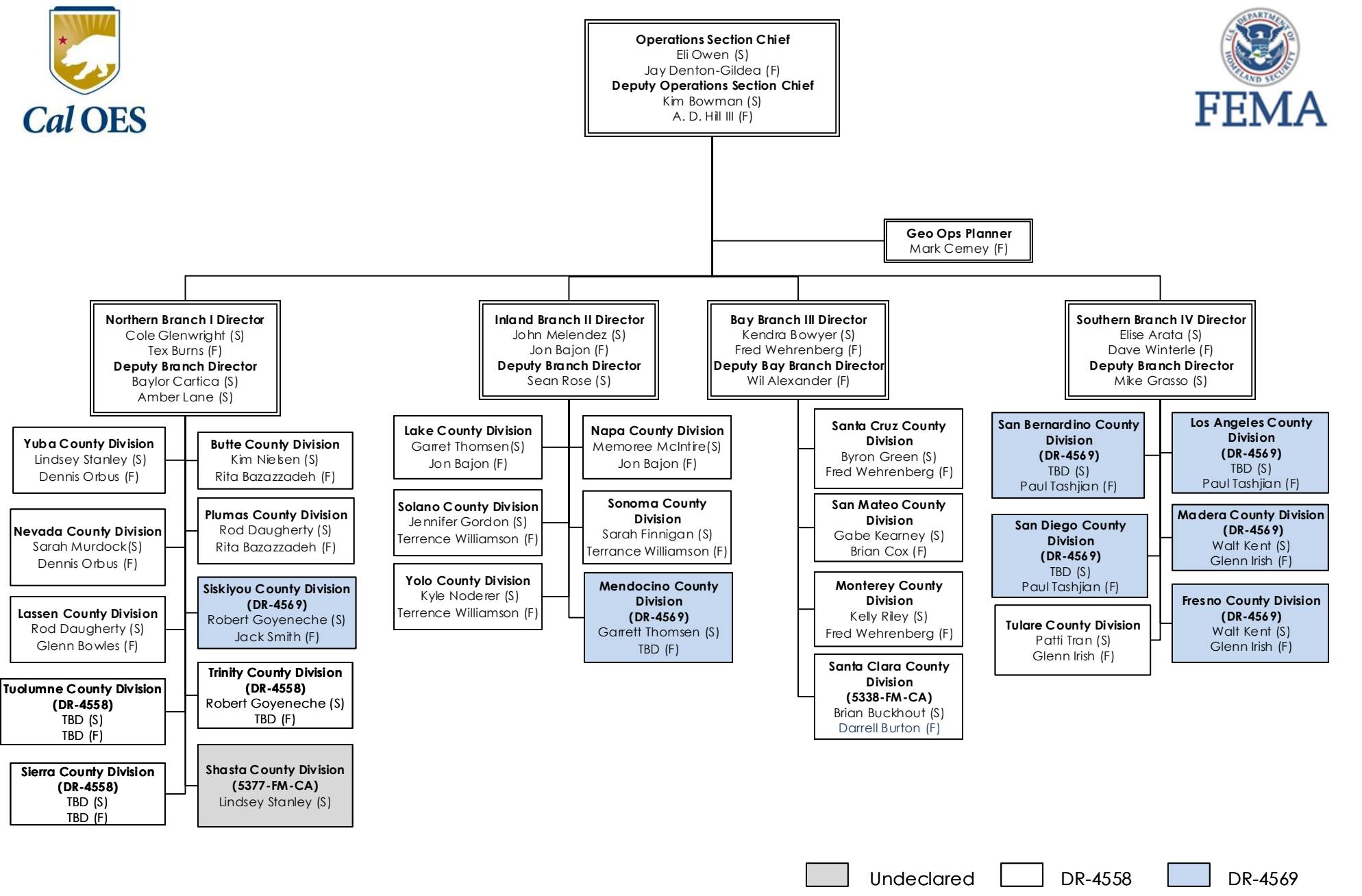
**5. Reviewed By:** Nicole Erlichman, PSC

# FIELD OPERATIONS ORGANIZATION CHART

**1. Incident Name**  
2020 July/August/September  
Statewide Fires

**2. Date/Time Prepared**  
10/19/2020

**3. Operational Period Date/Time**  
0700 10/20/2020-  
0700 10/22/2020



Undeclared   
  DR-4558   
  DR-4569

**ICS-207**

**4. Prepared By:** Gina Avelar, PSUL

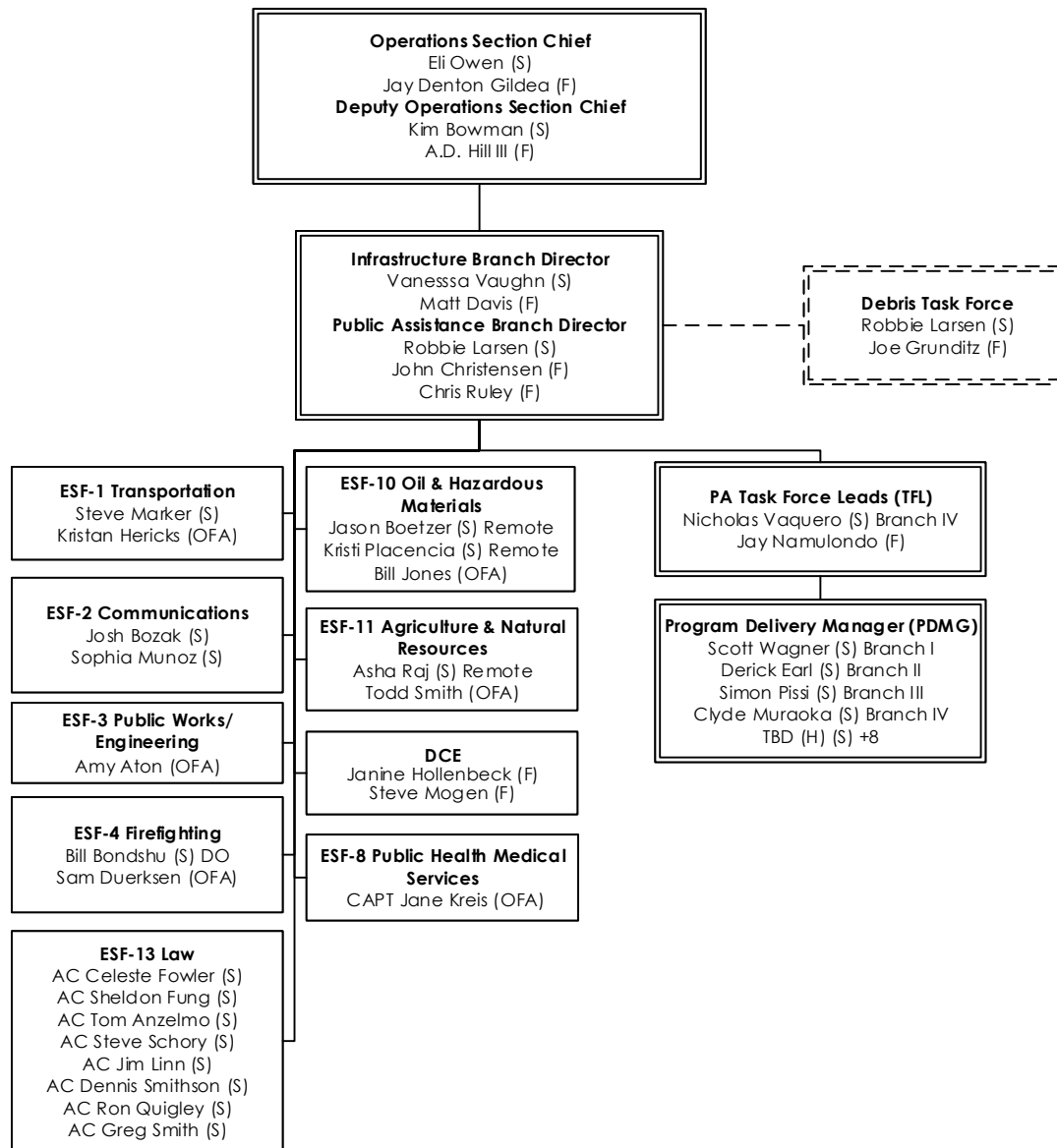
**5. Reviewed By:** Nicole Erlichman, PSC

# Infrastructure Branch ORGANIZATION CHART

**1. Incident Name**  
2020 July/August/September  
Statewide Fires

**2. Date/Time Prepared**  
10/19/2020

**3. Operational Period Date/Time**  
0700 10/20/2020-  
0700 10/22/2020



**ICS-207**

**4. Prepared By:** Gina Avelar, PSUL

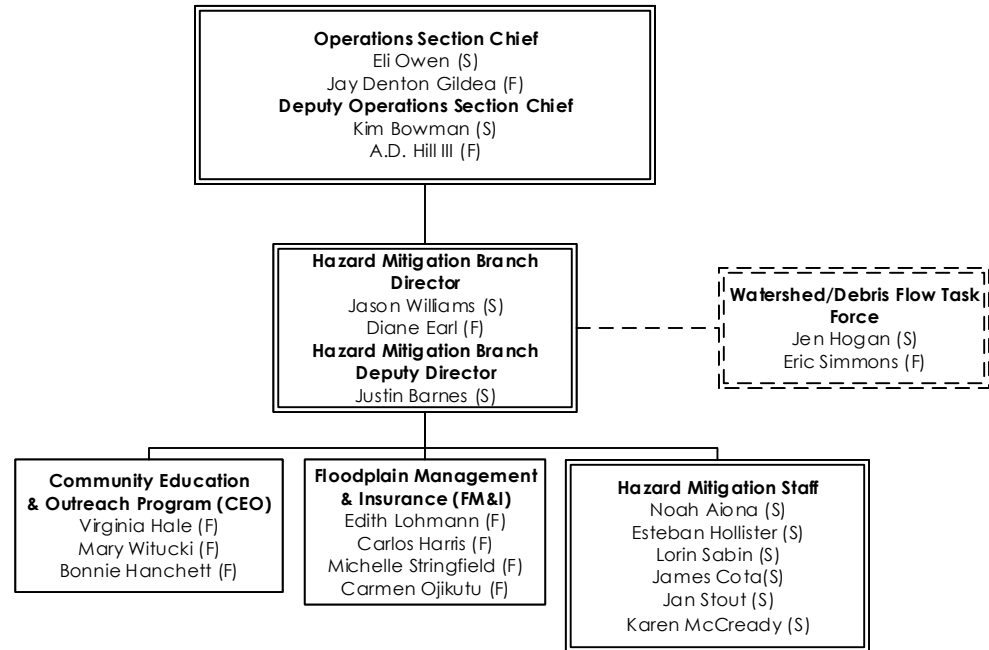
**5. Reviewed By:** Nicole Erlichman, PSC

# Hazard Mitigation Branch ORGANIZATION CHART

**1. Incident Name**  
2020 July/August/September  
Statewide Fires

**2. Date/Time Prepared**  
10/19/2020

**3. Operational Period Date/Time**  
0700 10/20/2020-  
0700 10/22/2020



**ICS-207**

**4. Prepared By:** Gina Avelar, PSUL

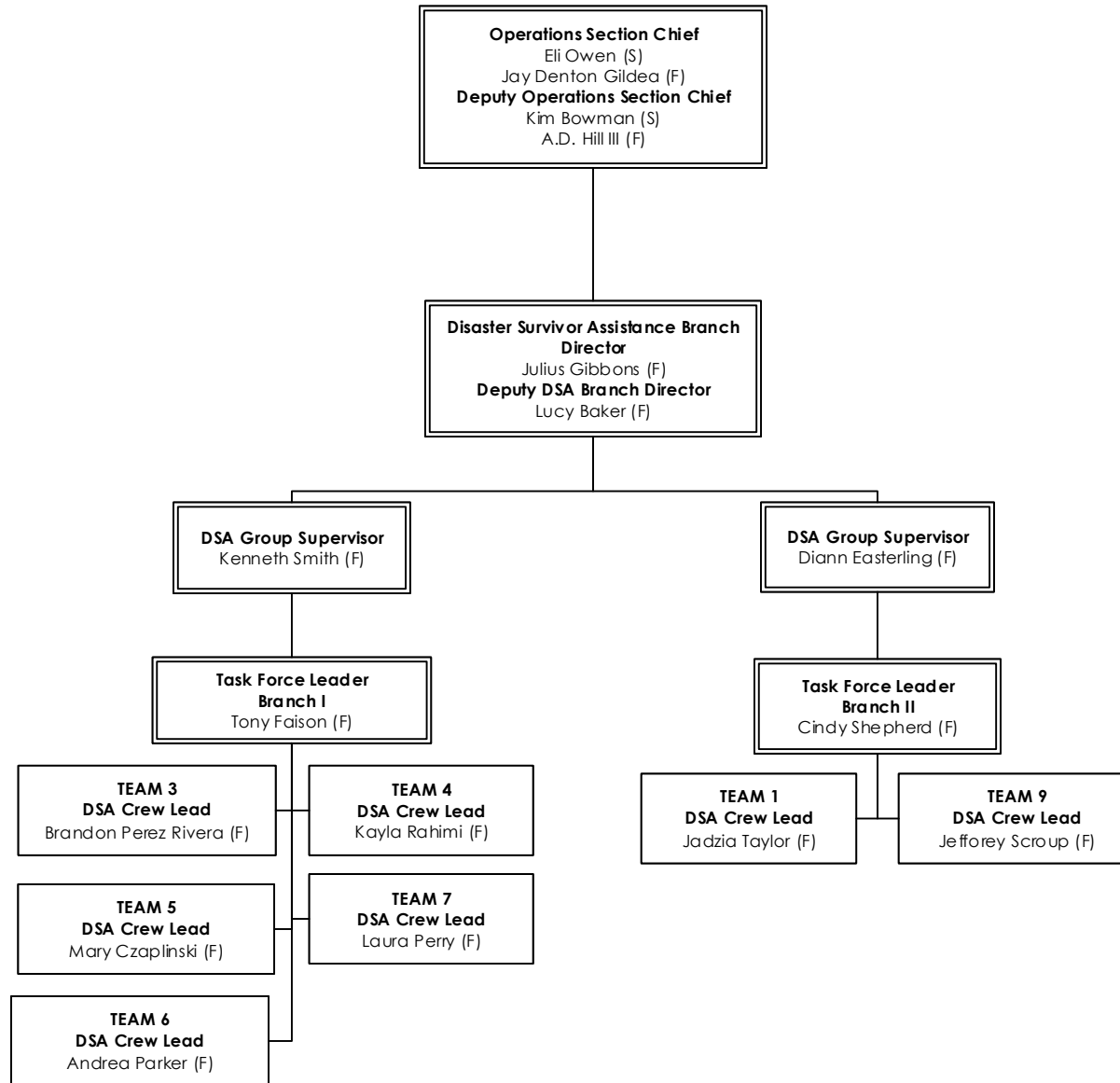
**5. Reviewed By:** Nicole Erlichman, PSC

# DSA BRANCH ORGANIZATION CHART

1. Incident Name  
2020 July/August/September  
Statewide Fires

2. Date/Time Prepared  
10/19/2020

3. Operational Period Date/Time  
0700 10/20/2020-  
0700 10/22/2020



ICS-207

4. Prepared By: Gina Avelar, PSUL

5. Reviewed By: Nicole Erlichman, PSC

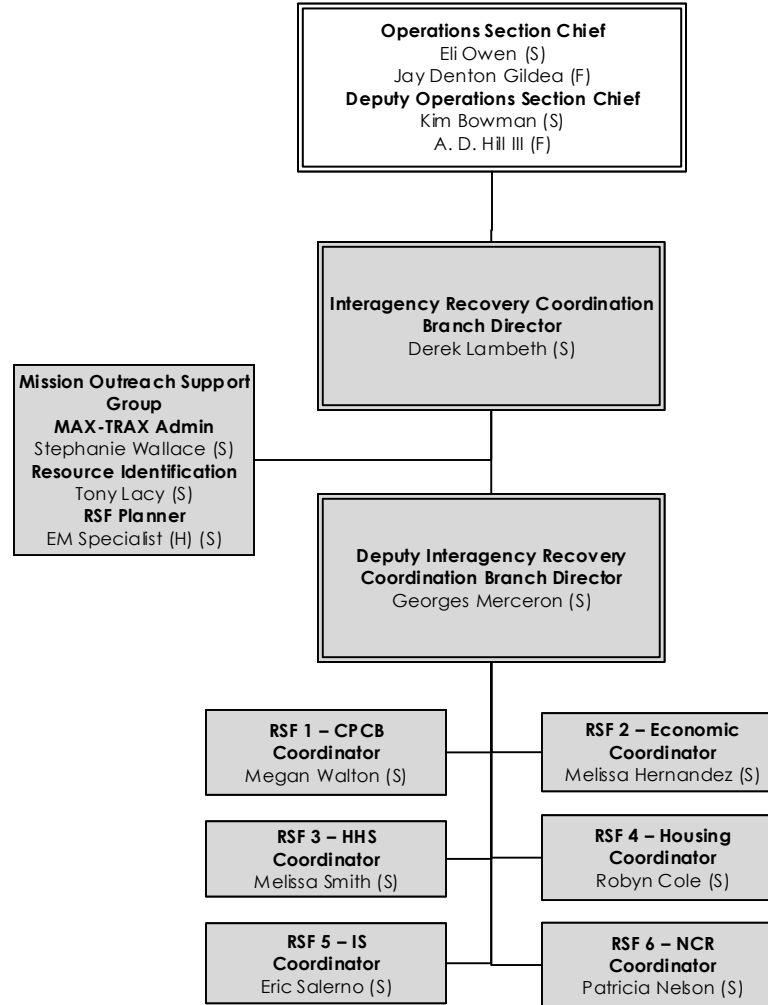


# IRC Branch ORGANIZATION CHART

**1. Incident Name**  
2020 July/August/September  
Statewide Fires

**2. Date/Time Prepared**  
10/19/2020

**3. Operational Period Date/Time**  
0700 10/20/2020-  
0700 10/22/2020



Pending Activation

**ICS-207**

**4. Prepared By:** Gina Avelar, PSUL

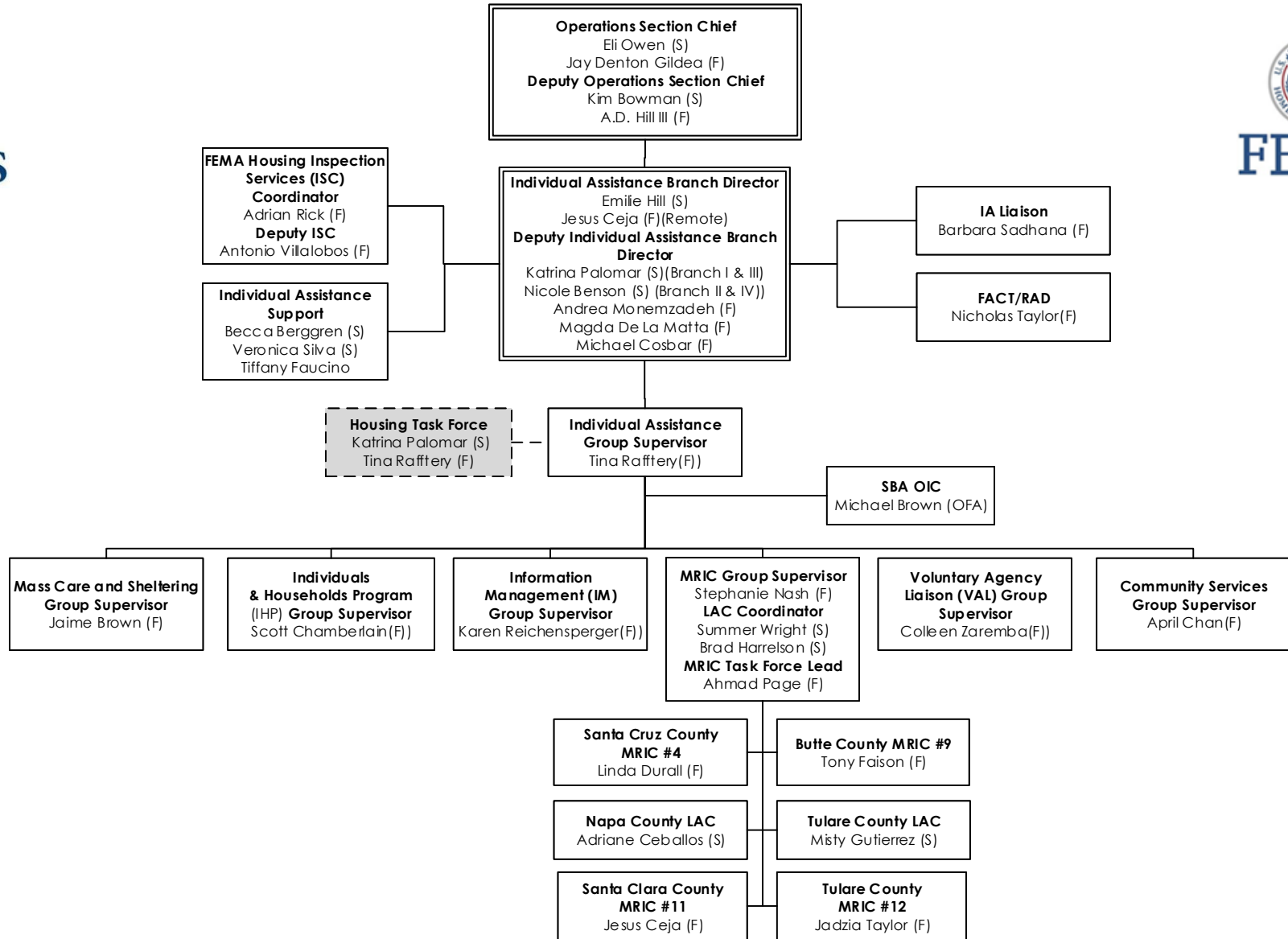
**5. Reviewed By:** Nicole Erlichman, PSC

# IA Branch ORGANIZATION CHART

**1. Incident Name**  
2020 July/August/September  
Statewide Fires

**2. Date/Time Prepared**  
10/19/2020

**3. Operational Period Date/Time**  
0700 10/20/2020-  
0700 10/22/2020



**ICS-207**

**4. Prepared By:** Gina Avelar, PSUL

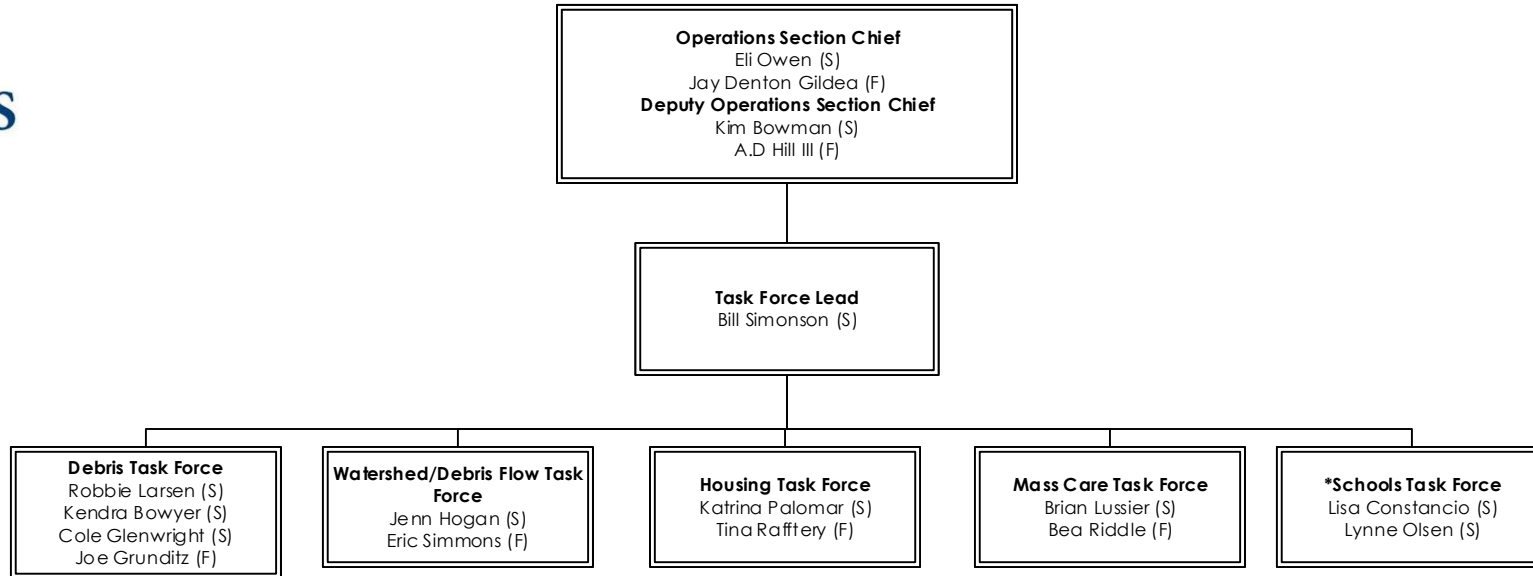
**5. Reviewed By:** Nicole Erlichman, PSC

# TASK FORCES ORGANIZATION CHART

1. Incident Name  
2020 July/August/September  
Statewide Fires

2. Date/Time Prepared  
10/19/2020

3. Operational Period Date/Time  
0700 10/20/2020-  
0700 10/22/2020



\*Leveraging COVID-19 Schools Task Force

ICS-207

4. Prepared By: Gina Avelar, PSUL

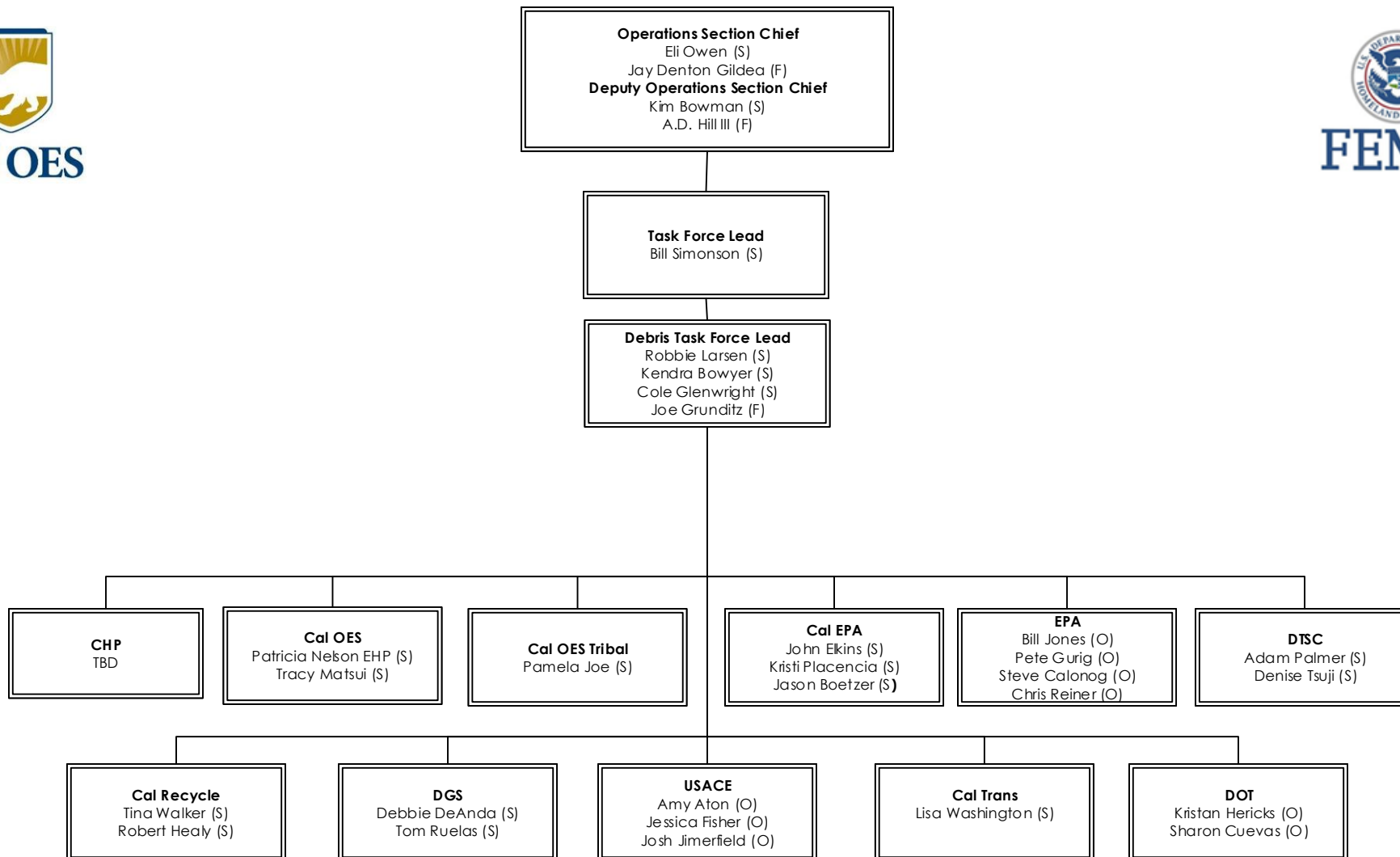
5. Reviewed By: Nicole Erlichman, PSC

# DEBRIS TASK FORCE ORGANIZATION CHART

**1. Incident Name**  
2020 July/August/September  
Statewide Fires

**2. Date/Time Prepared**  
10/19/2020

**3. Operational Period Date/Time**  
0700 10/20/2020-  
0700 10/22/2020



**ICS-207**

**4. Prepared By:** Gina Avelar, PSUL

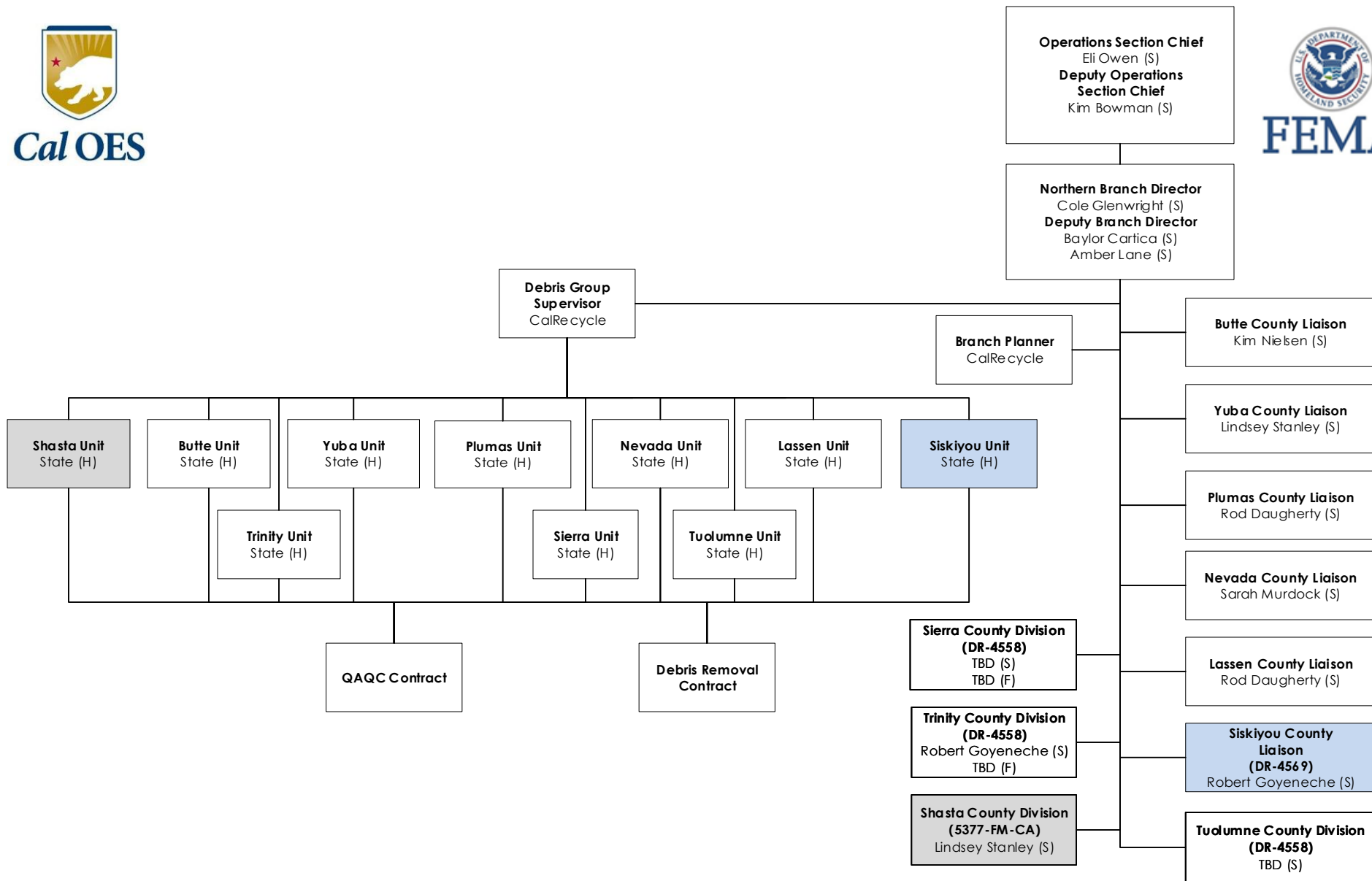
**5. Reviewed By:** Nicole Erlichman, PSC

# DEBRIS OPS NORTHERN ORGANIZATION CHART

1. Incident Name  
2020 July/August/September  
Statewide Fires

2. Date/Time Prepared  
10/19/2020

3. Operational Period Date/Time  
0700 10/20/2020-  
0700 10/22/2020



Undeclared
  DR-4558
  DR-4569

ICS-207

4. Prepared By: Gina Avelar, PSUL

5. Reviewed By: Nicole Erlichman, PSC

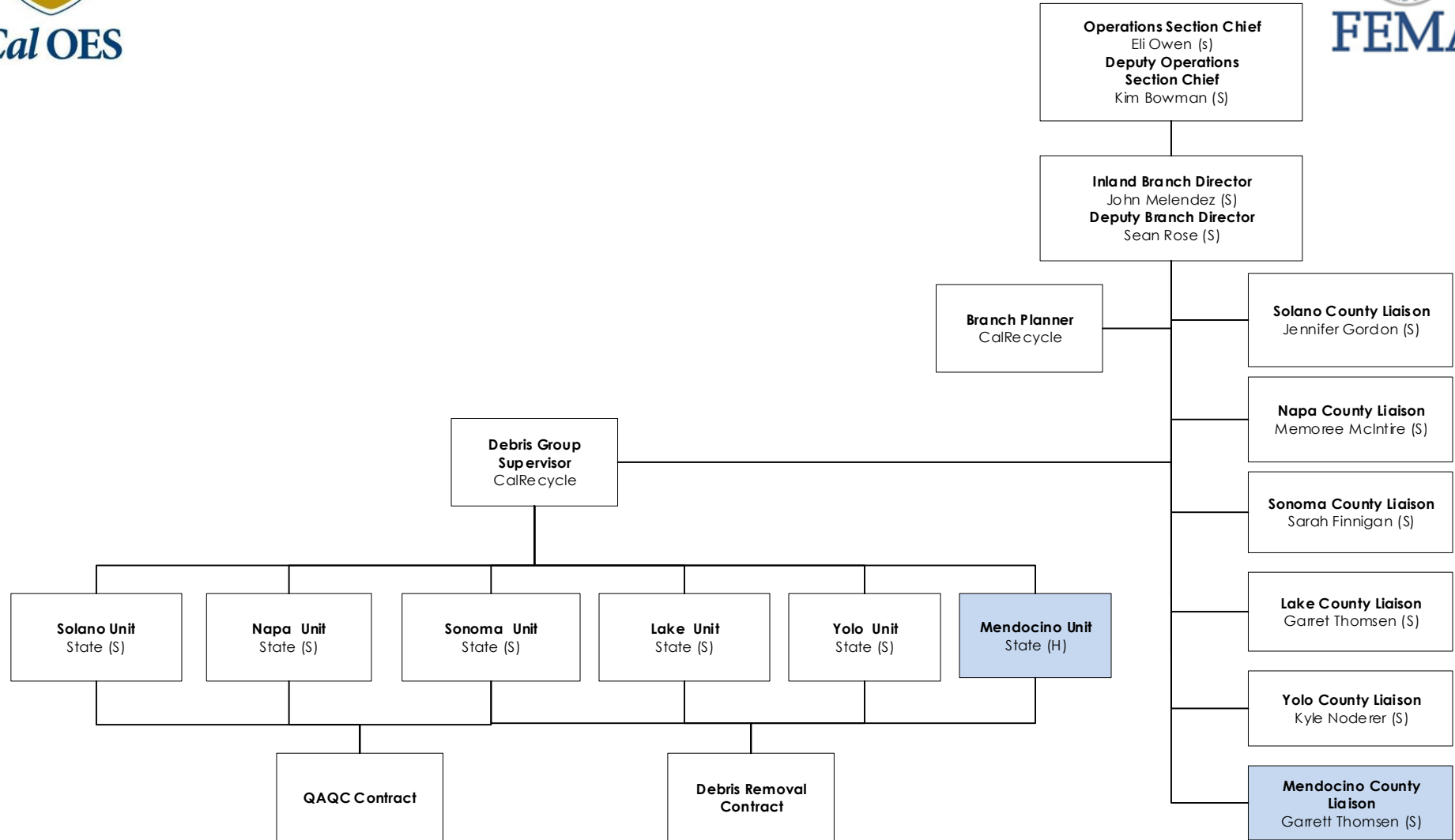


# DEBRIS OPS INLAND ORGANIZATION CHART

**1. Incident Name**  
2020 July/August/September  
Statewide Fires

**2. Date/Time Prepared**  
10/19/2020

**3. Operational Period Date/Time**  
0700 10/20/2020-  
0700 10/22/2020



□ DR-4558    ■ DR-4569

**ICS-207**

**4. Prepared By:** Gina Avelar, PSUL

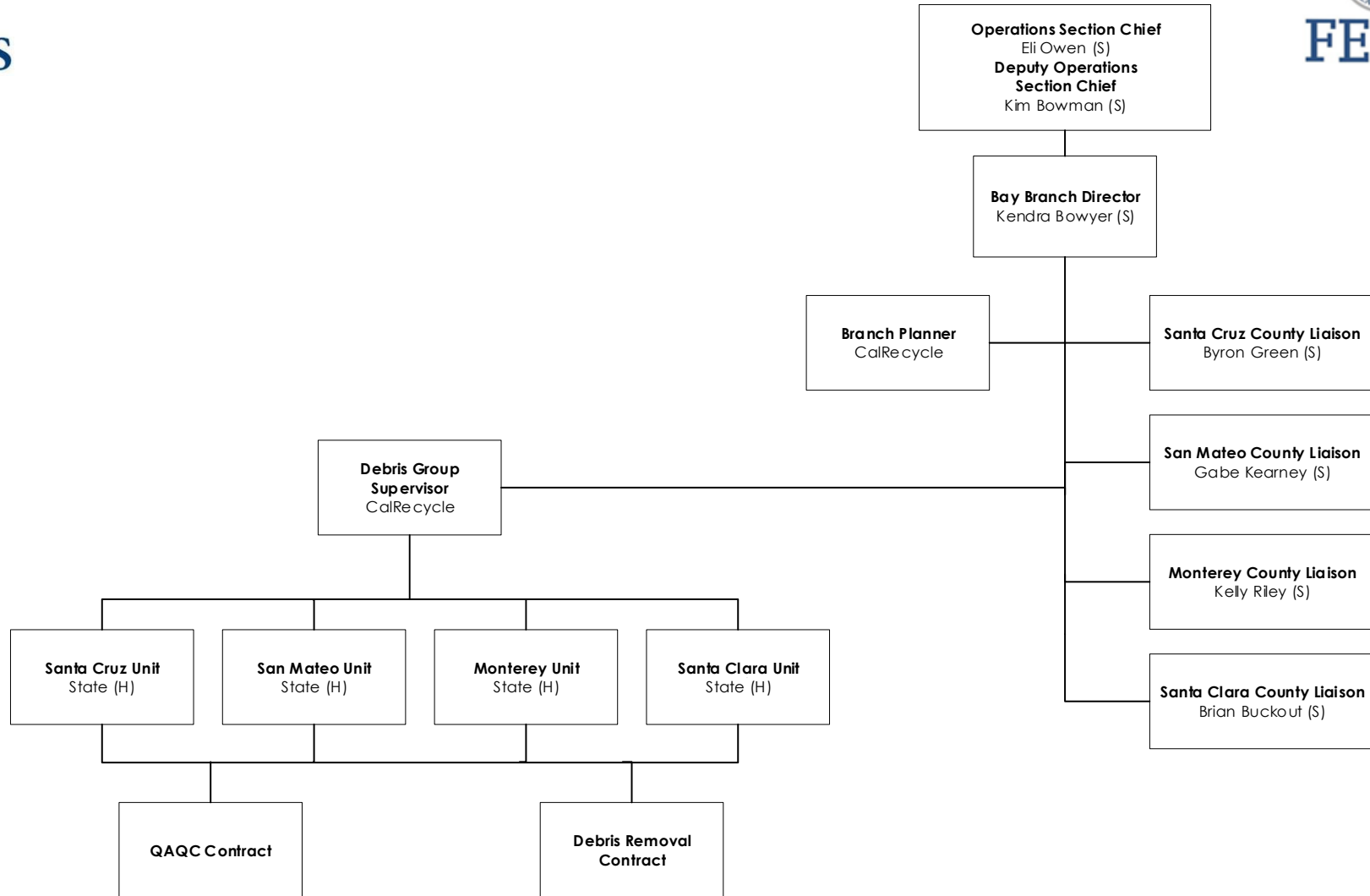
**5. Reviewed By:** Nicole Erlichman, PSC

# DEBRIS OPS BAY ORGANIZATION CHART

1. Incident Name  
2020 July/August/September  
Statewide Fires

2. Date/Time Prepared  
10/19/2020

3. Operational Period Date/Time  
0700 10/20/2020-  
0700 10/22/2020



DR-4558

ICS-207

4. Prepared By: Gina Avelar, PSUL

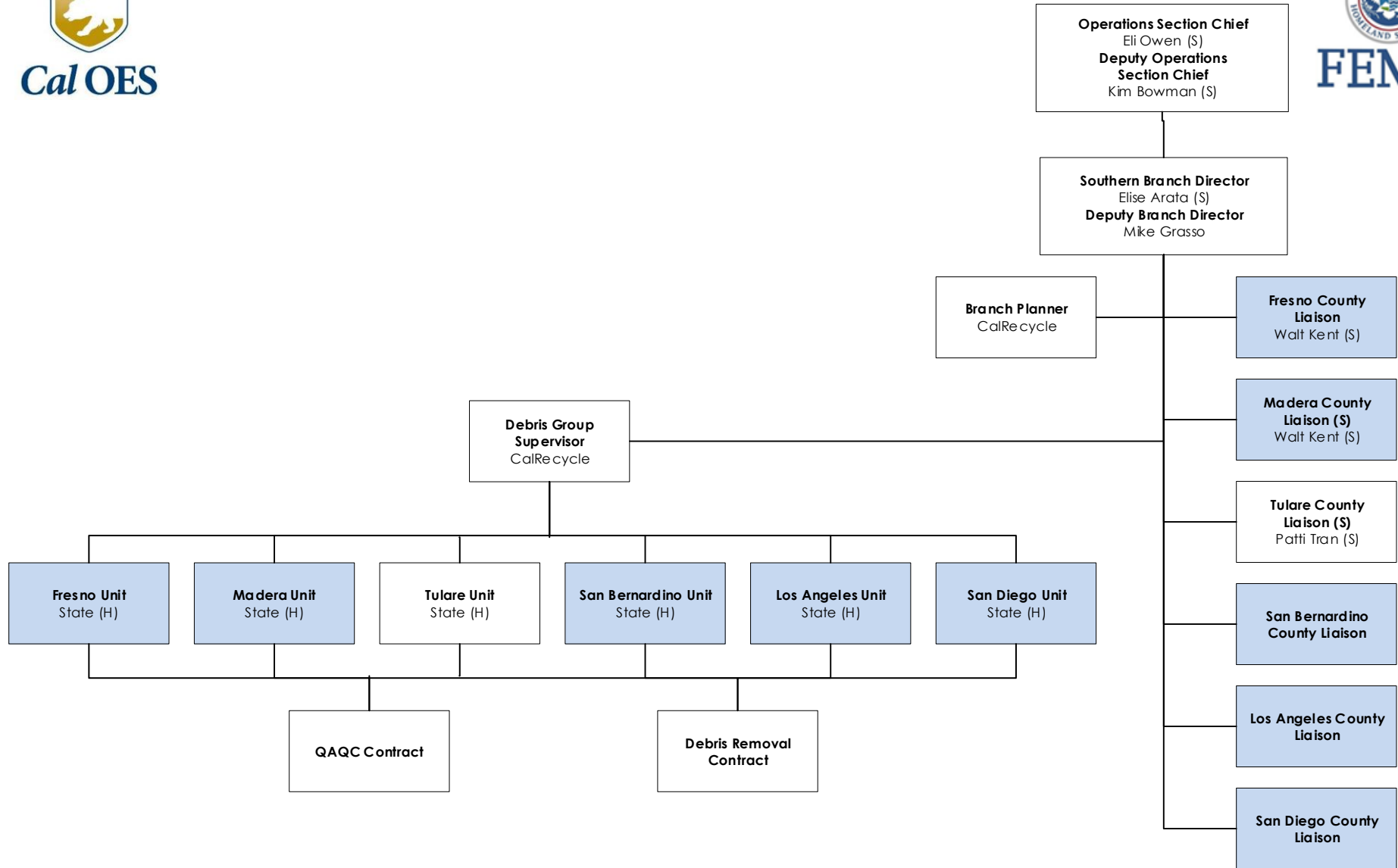
5. Reviewed By: Nicole Erlichman, PSC

# DEBRIS OPS SOUTHERN ORGANIZATION CHART

1. Incident Name  
2020 July/August/September  
Statewide Fires

2. Date/Time Prepared  
10/19/2020

3. Operational Period Date/Time  
0700 10/20/2020-  
0700 10/22/2020



DR-4558
  DR-4569

ICS-207

4. Prepared By: Gina Avelar, PSUL

5. Reviewed By: Nicole Erlichman, PSC

# DEBRIS FLOW TASK FORCE ORGANIZATION CHART

**1. Incident Name**  
2020 July/August/September  
Statewide Fires

**2. Date/Time Prepared**  
10/19/2020

**3. Operational Period Date/Time**  
0700 10/20/2020-  
0700 10/22/2020



**Operations Section Chief**  
Eli Owen (S)  
Jay Denton Gildea (F)  
**Deputy Operations Section Chief**  
Kim Bowman (S)  
A.D. Hill III (F)

**Task Force Lead**  
Bill Simonson (S)

**Watershed / Debris Flow Task Force Lead**  
Jenn Hogan (S)  
Eric Simmons (F)

**Cal OES**  
Pat Nelson (S)  
Jason Spotts (S)  
Whitney Braziel (S)  
Wendy Boemecke (S)  
Tina Phan (S)  
Doug Ganey (S)  
Dominic Mezzatesta (S)

**CAL FIRE**  
Chief Eric Huff (S)

**FEMA**  
Jennifer Monroe (F)

**CGS**  
Bill Short (S)

**CALTRANS**  
Gerald Kracher (S)

**DWR**  
Michael Day (S)  
Eric Wulff (S)  
John Paasch (S)

**SWRCB/RWQCB**  
Clint Snyder (S)

**CA State Parks**  
TBD (S)

**Cal EPA**  
Jason Boetzer (S)  
Kristi Placencia (S)

**Cal Natural Resource Agency**  
Jessica Moore (S)

**CA Fish and Wildlife**  
Michael Kirchner (S)  
Julie Yamamoto (S)  
Chad Dibble (S)

**US Forest Service**  
Todd Ellsworth (O)

**Dept. of Interior**  
Janet Whitlock (O)

**EPA**  
Suzanne Marr (O)

**US Fish and Wildlife**  
James Earley (S)

**USACE**  
Amy Aton (O)  
Jessica Fisher (O)  
Josh Jimerfield (O)

**National Park Service**  
Richard Schwab (O)

**NRCS / USDA**  
Ernesto De La Riva (O)

**NWS/NOAA**  
Cindy Matthews (O)

**Bureau of Indian Affairs**  
Joshua Allen (O)

**US Bureau of Reclamation**  
John Hutchings (O)

**US Bureau of Land Management**  
Jack Hamby (O)

**DOT**  
Kristan Hericks (O)  
Sharon Cuevas (O)

**ICS-207**

**4. Prepared By:** Gina Avelar, PSUL

**5. Reviewed By:** Nicole Erlichman, PSC

# HOUSING TASK FORCE ORGANIZATION CHART

**1. Incident Name**  
2020 July/August/September  
Statewide Fires

**2. Date/Time Prepared**  
10/19/2020

**3. Operational Period Date/Time**  
0700 10/20/2020-  
0700 10/22/2020



**Operations Section Chief**  
Eli Owen (S)  
Jay Denton Gildea (F)  
**Deputy Operations Section Chief**  
Kim Bowman (S)  
A.D. Hill III (F)

**Task Force Lead**  
Bill Simonson (S)

**Housing Task Force Lead**  
Katrina Palomar (S)  
Tina Rafferty (F)

**Deputy Housing Task Force Lead**  
Leah Lanier (S)

**Cal OES**  
Emilie Hill (S)  
Nicole Benson (S)  
Becca Berggren (S)  
Veronica Silva (S)  
Summer Wright (S)  
Derek Lambeth (S)  
Georges Merceron (S)  
Kristie Stevens (S)

**HCD**  
Maziar Movasaghi (S)  
Kyle Krause (S)

**FEMA**  
Laura Pickens (F)  
Joe DeAngelo (F)

**DGS**  
TBD (S)

**CSD**  
Leslie Taylor (S)

**USDA**  
Carol Pranka (O)

**SBA**  
Michael Brown (O)

**CDFA**  
Kevin Masuhara (S)

**CA State Parks**  
Armando Quintero (S)

**CDSS**  
JR Antablian

Pending Activation

**ICS-207**

**4. Prepared By:** Gina Avelar, PSUL

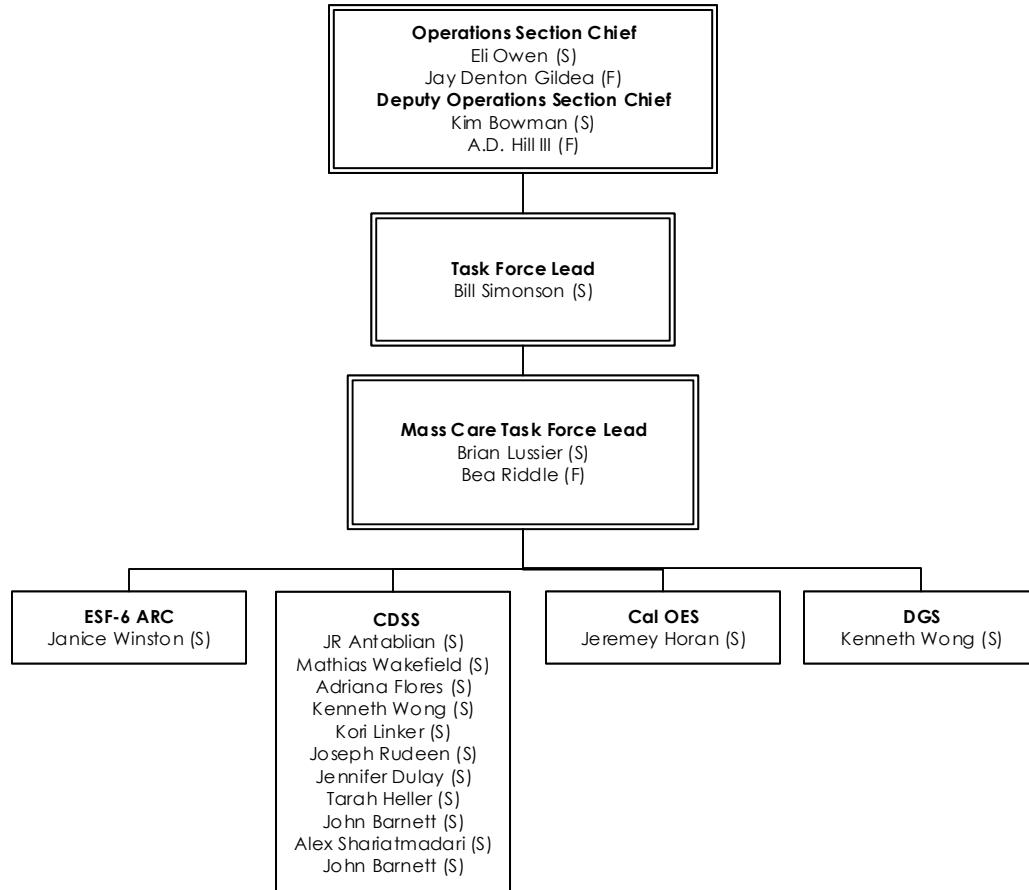
**5. Reviewed By:** Nicole Erlichman, PSC

# MASS CARE TASK FORCE ORGANIZATION CHART

**1. Incident Name**  
2020 July/August/September  
Statewide Fires

**2. Date/Time Prepared**  
10/19/2020

**3. Operational Period Date/Time**  
0700 10/20/2020-  
0700 10/22/2020



**ICS-207**

**4. Prepared By:** Gina Avelar, PSUL

**5. Reviewed By:** Nicole Erlichman, PSC

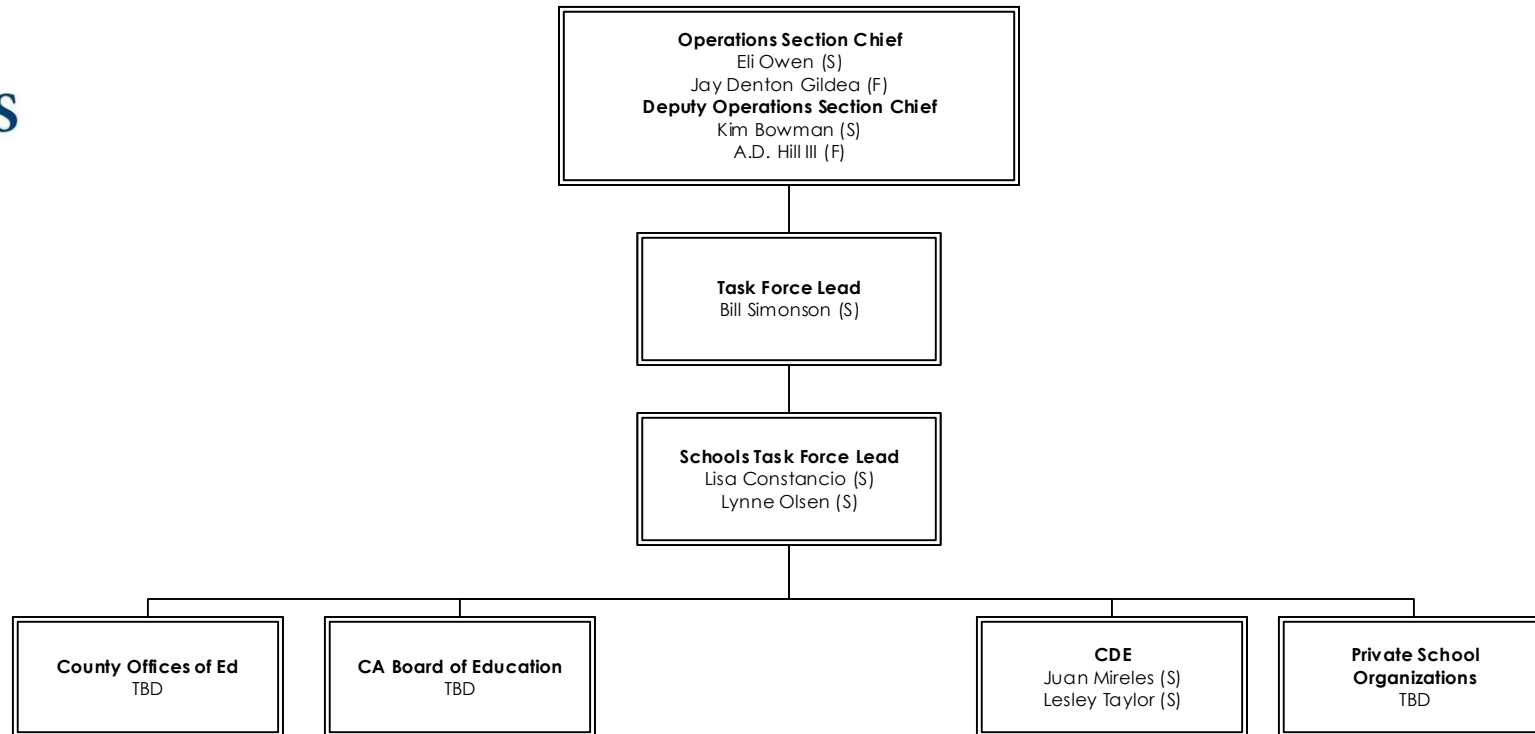


# SCHOOLS TASK FORCES ORGANIZATION CHART

**1. Incident Name**  
2020 July/August/September  
Statewide Fires

**2. Date/Time Prepared**  
10/19/2020

**3. Operational Period Date/Time**  
0700 10/20/2020-  
0700 10/22/2020



\*Leveraging COVID-19 Schools Task Force

**ICS-207**

**4. Prepared By:** Gina Avelar, PSUL

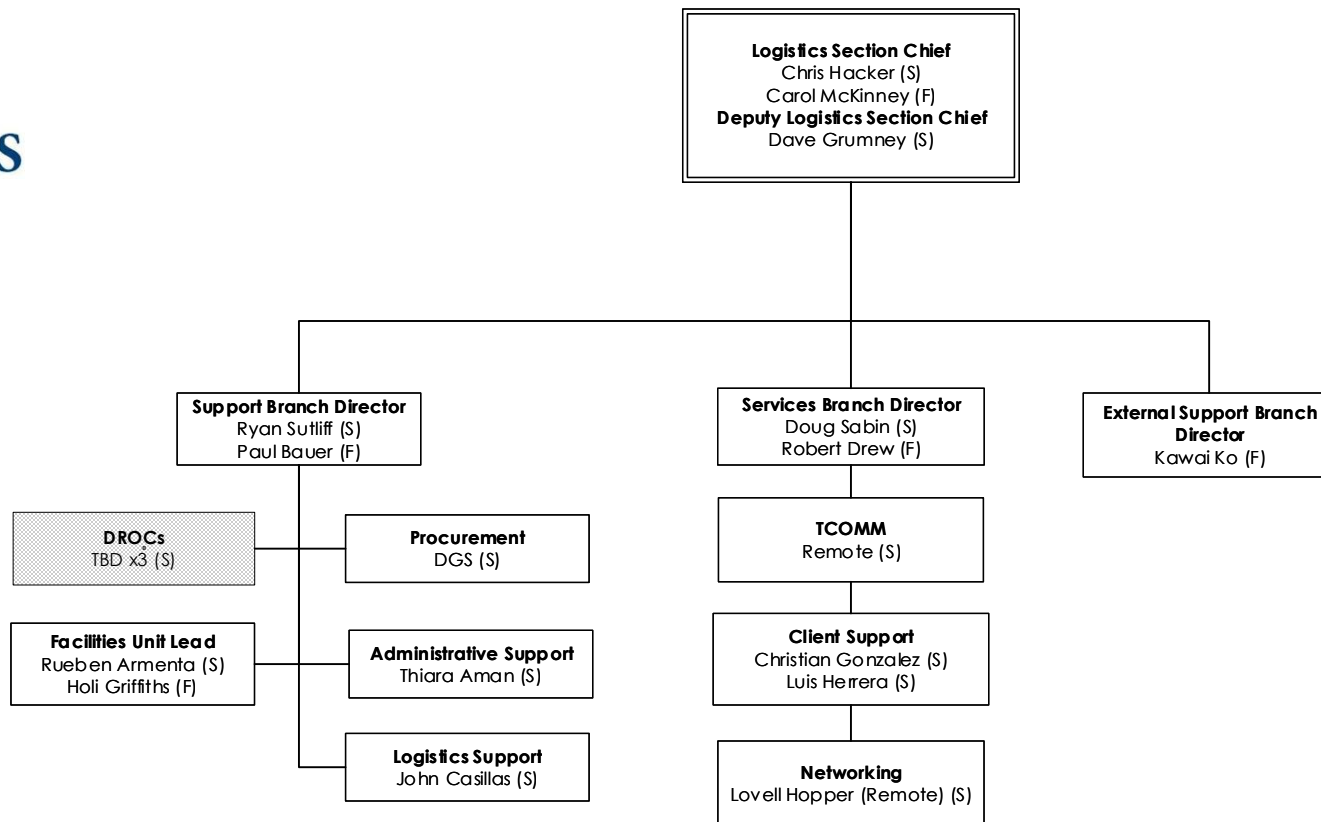
**5. Reviewed By:** Nicole Erlichman, PSC

# LOGISTICS SECTION ORGANIZATION CHART

1. Incident Name  
2020 July/August/September  
Statewide Fires

2. Date/Time Prepared  
10/19/2020

3. Operational Period Date/Time  
0700 10/20/2020-  
0700 10/22/2020



 Pending Activation

ICS-207

4. Prepared By: Gina Avelar, PSUL

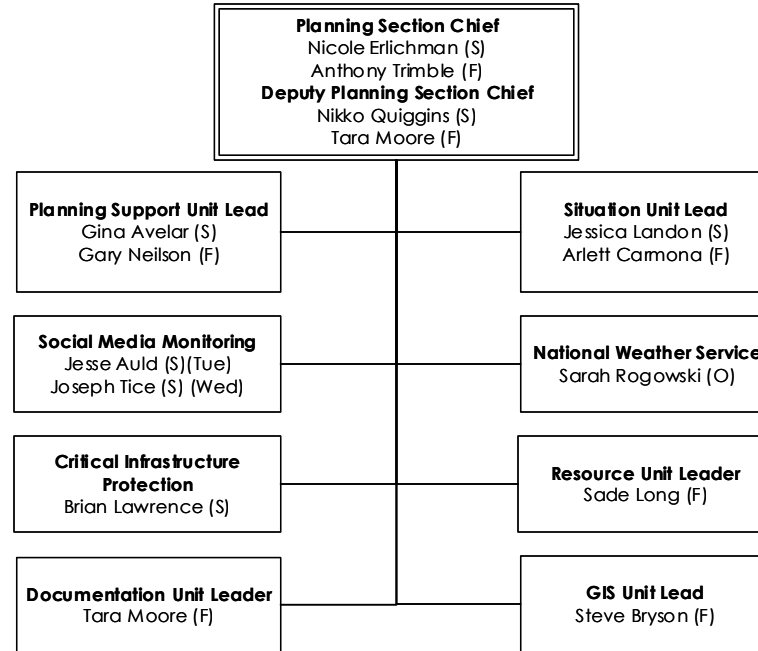
5. Reviewed By: Nicole Erlichman, PSC

# PLANNING SECTION ORGANIZATION CHART

**1. Incident Name**  
2020 July/August/September  
Statewide Fires

**2. Date/Time Prepared**  
10/19/2020

**3. Operational Period Date/Time**  
0700 10/20/2020-  
0700 10/22/2020



**ICS-207**

**4. Prepared By:** Gina Avelar, PSUL

**5. Reviewed By:** Nicole Erlichman, PSC



# Current Wildland Fires

## as of October 19 2020 - 0800 Hours



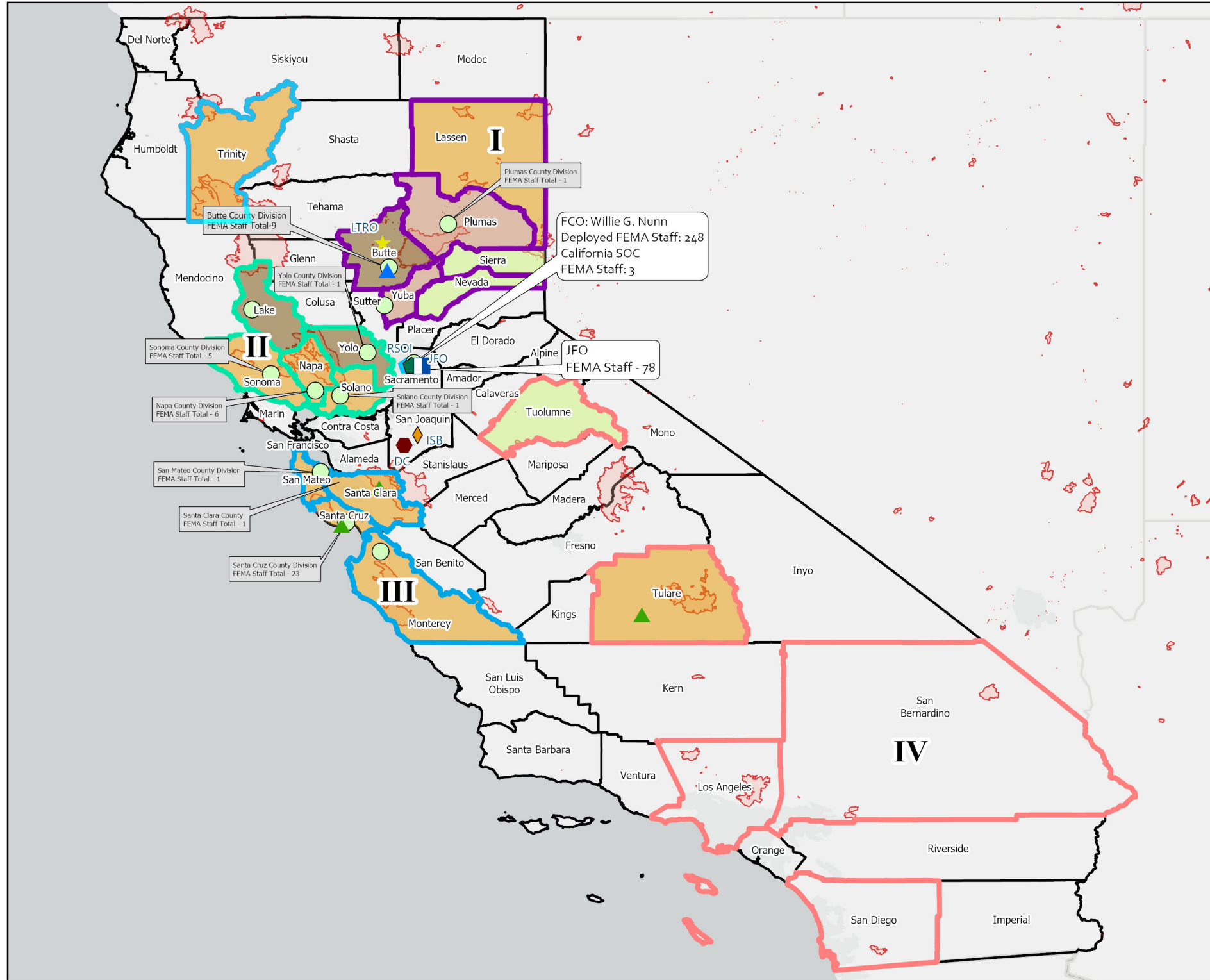
- Active Fire (12)
- DR-4558 Counties
- DR-4569 Counties
- LRA** - Local Responsibility Area
- SRA** - State Responsibility Area
- FRA** - Federal Responsibility Area



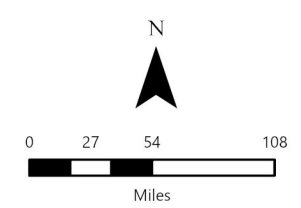
October 19 2020 - 0800 hrs  
 Produced by: Cal OES GIS Division  
 Source: CalOES, FAMWEB 209s, IRWIN  
 Active\_Incident/Fires/Statewide\_Daily\_Fire\_Maps  
 \Statewide\_Daily\_Fire\_Maps.aprx

# FEMA Region IX

DR-4558-CA: California Wildfires  
Force Laydown Map - 10/19/2020



- CRIC
  - California SOC/FEMA IOF
  - EOC
  - JFO
- FEMA-4558-DR-CA  
Designated Counties
- IA/PA-B ONLY
  - IA/PA CAT A - G
  - IA/PA A & B ONLY
  - PA B ONLY
  - PA CAT A - G
- Branch
- I
  - II
  - III
  - IV
- Facilities
- LAC/Mobile Registration Intake Center (MRIC)
  - MRIC
  - Distribution Center
  - Emergency Operation Center
  - Incident Support Base
  - FEMA RSOI
  - Long Term Recovery Office
  - JFO



<b>FEMA ICS 204 FORM BRANCH ASSIGNMENT LIST</b>	<b>1. FEMA Disaster Number:</b> FEMA-4558-DR	<b>2. Operational Period:</b> 10/20/2020 0700 to 10/22/2020 0700	<b>5. Prepared By:</b> Sade Long, RESL <b>Date</b> 10/19/2020
---	---	---	--

<b>3. Branch:</b> Hazard Mitigation Branch	<b>4. Division / Group:</b> N/A	<b>6. Reviewed By (OSC-State):</b> Eli Owen <b>Date</b> 10/19/2020
--	---------------------------------	---

<b>10. Operations Personnel: Position/Contact Information</b>  <b>OSC (State):</b> Eli Owen 916-214-4132 Eli.Owen@CalOES.ca.gov  <b>OSC (FEMA):</b> Jay Denton Gildea 202-320-7179 janston.dentongildea@fema.dhs.gov  <b>Branch Director (State):</b>  <b>Branch Director (FEMA):</b> Diane Earl 732-208-6261 diane.earl@fema.dhs.gov  <b>Div/Group Supervisor (State):</b>  <b>Div/Group Supervisor (FEMA):</b>	<b>7. Reviewed By (PSC-State):</b> Nicole Erlichman <b>Date</b> 10/19/2020  <b>8. Reviewed By (OSC-FEMA):</b> Jay Denton Gildea <b>Date</b> 10/19/2020  <b>9. Reviewed By (PSC-FEMA):</b> Anthony Trimble <b>Date</b> 10/19/2020
--	---

11. Resources Assigned							
Resource Identifier	Functional Area	Resource Leader Name	Leader Contact Information	Total # of Persons	Work Assignment	Reporting Location/Time	Logistical needs, Special Instruction, additional information
HISP	Hazard Mitigation	(S) Jason Williams (F) Carlos Harris	(S) 916-206-2116 (F) 423-903-2165	1	Conduct insurance agent outreach calls throughout Monterey County to promote NFIP.	Monterey County  10/20/2020 0900 PDT	DR-4558-CA Objectives Supported:36
HISP	Hazard Mitigation	(S) Jason Williams (F) Carmen Ojikutu	(S) 916-206-2116 (F) 202-717-1703	1	Conduct insurance agent outreach calls throughout San Mateo Co. to promote NFIP.  10/20 & 10/21/20	San Mateo County  10/20/2020 0900 PDT	DR-4558-CA Objectives Supported:36



CESP	Hazard Mitigation	(S) Jason Williams (F) Virginia Hale	(S) 916-206-2116 (F) 202-617-7023	2	Maintain mitigation display at Boulder Creek Ace Hardware Santa Cruz County.  10/20 & 10/21/20	Ace Hardware 12990 Hwy 9, Boulder Creek, CA 95006  <b>USNG:</b> 10S EG 78045 08846  10/20/2020 0900	DR-4558-CA Objectives Supported: 36
CESP	Hazard Mitigation	(S) Jason Williams (F) Virginia Hale	(S) 916-206-2116 (F) 202-617-7023	2	Maintain mitigation display at Home Depot, Soquel, Santa Cruz County.	Home Depot  2600 41st Ave., Soquel, CA 95073  <b>USNG:</b> 10S EF 92135 93622  10/21/2020 0900 PDT	DR-4558-CA Objectives Supported: 36
HISP	Hazard Mitigation	(F) Carlos Harris	432-903-2165	1	Conduct Insurance Agent outreach calls in Santa Clara County to promote NFIP.	Santa Clara County    10/21/2020 0900 PDT	DR-4558-CA Objectives Supported: 36

**Communications (radio frequency/channel information and/or phone contact numbers needed for this assignment):**

<b>FEMA ICS 204 FORM BRANCH ASSIGNMENT LIST</b>	<b>1. FEMA Disaster Number:</b> FEMA-4558-DR	<b>2. Operational Period:</b> 10/20/2020 0700 to 10/22/2020 0700	<b>5. Prepared By:</b> Susan Hardy, RESL <b>Date</b> 10/19/2020
---	---	---	--

<b>3. Branch:</b> Individual Assistance	<b>4. Division / Group:</b> N/A	<b>6. Reviewed By (OSC-State):</b> Eli Owen <b>Date</b> 10/19/2020
---	---------------------------------	---

<b>10. Operations Personnel: Position/Contact Information</b>  <b>OSC (State):</b> Eli Owen 916-214-4132 Eli.Owen@CalOES.ca.gov  <b>OSC (FEMA):</b> Jay Denton Gildea 202-320-7179 janston.dentongildea@fema.dhs.gov  <b>Branch Director (State):</b> Emilie Hill 916-823-1081 Emilie.Hill@CalOES.ca.gov  <b>Branch Director (FEMA):</b> Andrea Monemzadeh 202-230-7389 andrea.monemzadeh@fema.dhs.gov  <b>Div/Group Supervisor (State):</b>  <b>Div/Group Supervisor (FEMA):</b>	<b>7. Reviewed By (PSC-State):</b> Nicole Erlichman <b>Date</b> 10/19/2020  <b>8. Reviewed By (OSC-FEMA):</b> Jay Denton Gildea <b>Date</b> 10/19/2020  <b>9. Reviewed By (PSC-FEMA):</b> Anthony Trimble <b>Date</b> 10/19/2020
---	---

11. Resources Assigned							
Resource Identifier	Functional Area	Resource Leader Name	Leader Contact Information	Total # of Persons	Work Assignment	Reporting Location/Time	Logistical needs, Special Instruction, additional information
SBA Officer in Charge (OIC)	Individual Assistance - General	(OFA) Michael Brown	916-216-9792	7	SBA Customer Service Representatives (CSRs) contact FEMA referrals in designated counties.  Customer Service Phone #:800-659-2955	virtual  10/20/2020 0900 PDT	DR-4558-CA Objectives Supported: 16b, 29 DR-4569-CA Objectives Supported: 2,3
Inspection Services Coordinators (ISC)	Individual Assistance - General	(S) Emilie Hill (F) Adrian Rick	(S) 916-823-1081 (F) 540-686-3807	14	Virtually inspect homes and property as referred by FEMA	virtual  10/20/2020 0900 PDT	DR-4558-CA Objectives Supported:16b

**Communications (radio frequency/channel information and/or phone contact numbers needed for this assignment):**

<b>FEMA ICS 204 FORM BRANCH ASSIGNMENT LIST</b>	<b>1. FEMA Disaster Number:</b> FEMA-4558-DR	<b>2. Operational Period:</b> 10/20/2020 0700 to 10/22/2020 0700	<b>5. Prepared By:</b> Susan Hardy <b>Date</b> 10/19/2020
<b>3. Branch:</b> Northern Branch I		<b>4. Division / Group:</b> N/A	<b>6. Reviewed By (OSC-State):</b> Eli Owen <b>Date</b> 10/19/2020
<b>10. Operations Personnel: Position/Contact Information</b>  <b>OSC (State):</b> Eli Owen 916-214-4132 Eli.Owen@CalOES.ca.gov  <b>OSC (FEMA):</b> Jay Denton Gildea 202-320-7179 janston.dentongildea@fema.dhs.gov  <b>Branch Director (State):</b>  <b>Branch Director (FEMA):</b> Therron (Tex) Burns 404-695-1614 therron.burns@fema.dhs.gov  <b>Div/Group Supervisor (State):</b>  <b>Div/Group Supervisor (FEMA):</b>			<b>7. Reviewed By (PSC-State):</b> Nicole Erlichman <b>Date</b> 10/19/2020  <b>8. Reviewed By (OSC-FEMA):</b> Jay Denton Gildea <b>Date</b> 10/19/2020  <b>9. Reviewed By (PSC-FEMA):</b> Anthony Trimble <b>Date</b> 10/19/2020

<b>11. Resources Assigned</b>							
<b>Resource Identifier</b>	<b>Functional Area</b>	<b>Resource Leader Name</b>	<b>Leader Contact Information</b>	<b>Total # of Persons</b>	<b>Work Assignment</b>	<b>Reporting Location/Time</b>	<b>Logistical needs, Special Instruction, additional information</b>
Tulare County	Individual Assistance - General	(S) Misty Gutierrez (F) Jesus Ceja	(S) (916) 516-6207 (F) 202-805-6724	4	Assist survivors with disaster information in Tulare County through LAC	Tulare County Government Plaza South  1055 W. Henderson Ave., Porterville, CA 93257  <b>USNG:</b> 11S LV 16227 94792  10/20/2020 0800 PDT	DR-4558-CA Objectives Supported: 16b  (S) Summer Wright- LAC Coordinator (916) 715-3558  Dates of Operations: 10/8 - TBD M- F: 0800- 1700 Sat-Sun: 0900 - 1500

Shasta County [Undesignated] LAC	Individual Assistance - General	(S) Rich Martinez (F) Jesus Ceja	(S) 916-628-4411 (F) 202-805-6724	11	Assist survivors with disaster information in Shasta County through LAC	Shasta District Fair and Event Center  1890 Briggs Street, Anderson, CA 96007  <b>USNG:</b> 10T EK 58639 78274  10/20/2020 1000 PDT	DR-4558-CA Objectives Supported: 16b  (S) Summer Wright - LAC Coordinator (916) 715-3558  Hours of Operations: 10/14-10/21: 1000 - 1900 PDT
--	---------------------------------------	--	--------------------------------------	----	---	--	--

**Communications (radio frequency/channel information and/or phone contact numbers needed for this assignment):**

<b>FEMA ICS 204 FORM BRANCH ASSIGNMENT LIST</b>	<b>1. FEMA Disaster Number:</b> FEMA-4558-DR	<b>2. Operational Period:</b> 10/20/2020 0700 to 10/22/2020 0700	<b>5. Prepared By:</b> Sade Long, RESL	<b>Date</b> 10/19/2020
---	---	---	---	---------------------------

<b>3. Branch:</b> Safety	<b>4. Division / Group:</b> N/A	<b>6. Reviewed By (OSC-State):</b> Eli Owen	<b>Date</b> 10/19/2020
--------------------------	---------------------------------	--	---------------------------

<b>10. Operations Personnel: Position/Contact Information</b>  <b>OSC (State):</b> Eli Owen 916-214-4132 Eli.Owen@CalOES.ca.gov  <b>OSC (FEMA):</b> Jay Denton Gildea 202-320-7179 janston.dentongildea@fema.dhs.gov  <b>Branch Director (State):</b>  <b>Branch Director (FEMA):</b> Wayne Baskin 202-826-5959 wayne.baskin@fema.dhs.gov  <b>Div/Group Supervisor (State):</b>  <b>Div/Group Supervisor (FEMA):</b>	<b>7. Reviewed By (PSC-State):</b> Nicole Erlichman	<b>Date</b> 10/19/2020
	<b>8. Reviewed By (OSC-FEMA):</b> Jay Denton Gildea	<b>Date</b> 10/19/2020
	<b>9. Reviewed By (PSC-FEMA):</b> Anthony Trimble	<b>Date</b> 10/19/2020

**11. Resources Assigned**

Resource Identifier	Functional Area	Resource Leader Name	Leader Contact Information	Total # of Persons	Work Assignment	Reporting Location/Time	Logistical needs, Special Instruction, additional information
Safety Officer	Safety	(S) Kendra Bowyer (F) Wayne Baskin	(S) 916-214-2043 (F) 202-826-5959	3	Identify and implement control measures to eliminate workplace hazards, reduce risk and minimize worker exposure to COVID-19. Conduct a safety briefing with workers and provide a Medical Plan and Job Hazard Analysis.	All Incident Facilities  10/20/2020	DR-4558-CA Objectives Supported: 11c

**Communications (radio frequency/channel information and/or phone contact numbers needed for this assignment):**

<b>FEMA ICS 204 FORM BRANCH ASSIGNMENT LIST</b>	<b>1. FEMA Disaster Number:</b> FEMA-4558-DR	<b>2. Operational Period:</b> 10/20/2020 0700 to 10/22/2020 0700	<b>5. Prepared By:</b> Sade Long, RESL	<b>Date</b> 10/19/2020
---	---	---	---	---------------------------

<b>3. Branch:</b> Southern Branch IV	<b>4. Division / Group:</b> N/A	<b>6. Reviewed By (OSC-State):</b> Eli Owen	<b>Date</b> 10/19/2020
--------------------------------------	---------------------------------	--	---------------------------

<b>10. Operations Personnel: Position/Contact Information</b>  <b>OSC (State):</b> Eli Owen 916-214-4132 Eli.Owen@CalOES.ca.gov  <b>OSC (FEMA):</b> Jay Denton Gildea 202-320-7179 janston.dentongildea@fema.dhs.gov  <b>Branch Director (State):</b>  <b>Branch Director (FEMA):</b> David Winterle 202-368-1604 david.winterle@fema.dhs.gov  <b>Div/Group Supervisor (State):</b>  <b>Div/Group Supervisor (FEMA):</b>	<b>7. Reviewed By (PSC-State):</b> Nicole Erlichman	<b>Date</b> 10/19/2020
	<b>8. Reviewed By (OSC-FEMA):</b> Jay Denton Gildea	<b>Date</b> 10/19/2020
	<b>9. Reviewed By (PSC-FEMA):</b> Anthony Trimble	<b>Date</b> 10/19/2020

**11. Resources Assigned**

Resource Identifier	Functional Area	Resource Leader Name	Leader Contact Information	Total # of Persons	Work Assignment	Reporting Location/Time	Logistical needs, Special Instruction, additional information
Operations Section Chief	ESF 05: Info and Planning	(S) Eli Owen (F) Jay Denton Gildea	(S) 916-214-4132 (F) 202-320-7179	2	Mobilize, establish and begin coordination of operations personnel into the field.	JFO  2995 Prospect Park, Sacramento, CA  <b>USNG:</b> 10S FH 30641 71469  10/20/2020 0800 PST	DR-4569-CA Objectives Supported: 1

**Communications (radio frequency/channel information and/or phone contact numbers needed for this assignment):**

<b>FEMA ICS 204 FORM DIVISION ASSIGNMENT LIST</b>	<b>1. FEMA Disaster Number:</b> FEMA-4558-DR	<b>2. Operational Period:</b> 10/20/2020 0700 to 10/22/2020 0700	<b>5. Prepared By:</b> Susan Hardy, RESL <b>Date</b> 10/19/2020
---	---	---	--

<b>3. Branch:</b> Bay Branch III	<b>4. Division / Group:</b> Monterey County Division	<b>6. Reviewed By (OSC-State):</b> Eli Owen <b>Date</b> 10/19/2020
----------------------------------	--	---

<b>9. Operations Personnel: Position/Contact Information</b>  <b>OSC (State):</b> Eli Owen 916-214-4132 Eli.Owen@CalOES.ca.gov  <b>OSC (FEMA):</b> Jay Denton Gildea 202-320-7179 janston.dentongildea@fema.dhs.gov  <b>Branch Director (State):</b>  <b>Branch Director (FEMA):</b> Fred Wehrenburg 510-316-7636 fred.wehrenburg@fema.dhs.gov  <b>Div/Group Supervisor (State):</b>  <b>Div/Group Supervisor (FEMA):</b> Fred Wehrenburg 510-316-7636 fred.wehrenburg@fema.dhs.gov	<b>7. Reviewed By (PSC-State):</b> Nicole Erlichman <b>Date</b> 10/19/2020  <b>8. Reviewed By (OSC-FEMA):</b> Jay Denton Gildea <b>Date</b> 10/19/2020  <b>9. Reviewed By (PSC-FEMA):</b> Anthony Trimble <b>Date</b> 10/19/2020
---	---

10. Resources Assigned							
Resource Identifier	Functional Area	Resource Leader Name	Leader Contact Information	Total # of Persons	Work Assignment	Reporting Location/Time	Logistical needs, Special Instruction, additional information
EPA Monterey HHW	ESF 10: Hazardous Material	(OFA) Bill Jones	(OFA) 619-806-6737	1	Recon of Dolan Fire area.	10/20/2020 0700 PDT	DR-4558-CA Objectives Supported: 22b

**Communications (radio frequency/channel information and/or phone contact numbers needed for this assignment):**



<b>FEMA ICS 204 FORM DIVISION ASSIGNMENT LIST</b>	<b>1. FEMA Disaster Number:</b> FEMA-4558-DR	<b>2. Operational Period:</b> 10/20/2020 0700 to 10/22/2020 0700	<b>5. Prepared By:</b> Susan Hardy	<b>Date</b> 10/19/2020
---	---	---	---------------------------------------	---------------------------

<b>3. Branch:</b> Bay Branch III	<b>4. Division / Group:</b> San Mateo County Division	<b>6. Reviewed By (OSC-State):</b> Eli Owen	<b>Date</b> 10/19/2020
----------------------------------	---	--	---------------------------

<b>9. Operations Personnel: Position/Contact Information</b>		<b>7. Reviewed By (PSC-State):</b> Nicole Erlichman	<b>Date</b> 10/19/2020
<b>OSC (State):</b> Eli Owen 916-214-4132 Eli.Owen@CalOES.ca.gov  <b>OSC (FEMA):</b> Jay Denton Gildea 202-320-7179 janston.dentongildea@fema.dhs.gov  <b>Branch Director (State):</b>  <b>Branch Director (FEMA):</b> Fred Wehrenburg 510-316-7636 fred.wehrenburg@fema.dhs.gov  <b>Div/Group Supervisor (State):</b>  <b>Div/Group Supervisor (FEMA):</b> Brian Cox 202-689-7842 brianj.cox@fema.dhs.gov		<b>8. Reviewed By (OSC-FEMA):</b> Jay Denton Gildea	<b>Date</b> 10/19/2020
		<b>9. Reviewed By (PSC-FEMA):</b> Anthony Trimble	<b>Date</b> 10/19/2020

**10. Resources Assigned**

Resource Identifier	Functional Area	Resource Leader Name	Leader Contact Information	Total # of Persons	Work Assignment	Reporting Location/Time	Logistical needs, Special Instruction, additional information
EPA HHW	ESF 10: Hazardous Material	(OFA) Bill Jones	(OFA) 619-806-6737	15	Recon and HHW collection in CZU Fire Area (Zone 1).	10/20/2020	DR-4558-CA Objectives Supported: 22b

**Communications (radio frequency/channel information and/or phone contact numbers needed for this assignment):**

<b>FEMA ICS 204 FORM DIVISION ASSIGNMENT LIST</b>	<b>1. FEMA Disaster Number:</b> FEMA-4558-DR	<b>2. Operational Period:</b> 10/20/2020 0700 to 10/22/2020 0700	<b>5. Prepared By:</b> Sade Long, RESL	<b>Date</b> 10/19/2020
---	---	---	---	---------------------------

<b>3. Branch:</b> Bay Branch III	<b>4. Division / Group:</b> Santa Clara County Division	<b>6. Reviewed By (OSC-State):</b> Eli Owen	<b>Date</b> 10/19/2020
----------------------------------	---	--	---------------------------

<b>9. Operations Personnel: Position/Contact Information</b>		<b>7. Reviewed By (PSC-State):</b> Nicole Erlichman	<b>Date</b> 10/19/2020
<b>OSC (State):</b> Eli Owen 916-214-4132 Eli.Owen@CalOES.ca.gov  <b>OSC (FEMA):</b> Jay Denton Gildea 202-320-7179 janston.dentongildea@fema.dhs.gov  <b>Branch Director (State):</b>  <b>Branch Director (FEMA):</b> Fred Wehrenburg 510-316-7636 fred.wehrenburg@fema.dhs.gov  <b>Div/Group Supervisor (State):</b>  <b>Div/Group Supervisor (FEMA):</b> Darrell Burton 510-421-8790 darrell.burton@fema.dhs.gov		<b>8. Reviewed By (OSC-FEMA):</b> Jay Denton Gildea	<b>Date</b> 10/19/2020
		<b>9. Reviewed By (PSC-FEMA):</b> Anthony Trimble	<b>Date</b> 10/19/2020

<b>10. Resources Assigned</b>							
<b>Resource Identifier</b>	<b>Functional Area</b>	<b>Resource Leader Name</b>	<b>Leader Contact Information</b>	<b>Total # of Persons</b>	<b>Work Assignment</b>	<b>Reporting Location/Time</b>	<b>Logistical needs, Special Instruction, additional information</b>
Santa Clara County MRIC #11	Individual Assistance - DRCs	(S) Emilie Hill (F) Jesus Ceja	(S) 916-823-1081 (F) 202-805-6724	5	Assist survivors with disaster information in Santa Clara County through MRIC.	CalFire Smith Creek Fire Station  2280 Mt. Hamilton Rd. Mt. Hamilton, CA, 95140  <b>USNG:</b> 10S FG 19549 33582  10/20/2020 1000 PDT	DR-4558-CA Objectives Supported: 16b  MCOV 110 (Operator - John Johnson - (202-425-2353)  Hours of Operation: 1000-1700 PDT Closed Sundays  Last day of operation: 10/21/2020

**Communications (radio frequency/channel information and/or phone contact numbers needed for this assignment):**

<b>FEMA ICS 204 FORM DIVISION ASSIGNMENT LIST</b>		<b>1. FEMA Disaster Number:</b> FEMA-4558-DR		<b>2. Operational Period:</b> 10/20/2020 0700 to 10/22/2020 0700		<b>5. Prepared By:</b> Susan Hardy, RESL		<b>Date</b> 10/19/2020
<b>3. Branch:</b> Bay Branch III			<b>4. Division / Group:</b> Santa Cruz County Division			<b>6. Reviewed By (OSC-State):</b> Eli Owen		<b>Date</b> 10/19/2020
<b>9. Operations Personnel: Position/Contact Information</b>						<b>7. Reviewed By (PSC-State):</b> Nicole Erlichman		<b>Date</b> 10/19/2020
<b>OSC (State):</b> Eli Owen 916-214-4132 Eli.Owen@CalOES.ca.gov  <b>OSC (FEMA):</b> Jay Denton Gildea 202-320-7179 janston.dentongildea@fema.dhs.gov  <b>Branch Director (State):</b> Adam Amaral 831-444-1351 831-444-1351  <b>Branch Director (FEMA):</b> Fred Wehrenburg 510-316-7636 fred.wehrenburg@fema.dhs.gov  <b>Div/Group Supervisor (State):</b> Brian Buckhout 916-628-5897 Brian.Buckhout@CalOES.ca.gov  <b>Div/Group Supervisor (FEMA):</b> Fred Wehrenberg 510-316-7636 Fred.Wehrenberg@fema.dhs.gov						<b>8. Reviewed By (OSC-FEMA):</b> Jay Denton Gildea		<b>Date</b> 10/19/2020
						<b>9. Reviewed By (PSC-FEMA):</b> Anthony Trimble		<b>Date</b> 10/19/2020
<b>10. Resources Assigned</b>								
Resource Identifier	Functional Area	Resource Leader Name	Leader Contact Information	Total # of Persons	Work Assignment	Reporting Location/Time	Logistical needs, Special Instruction, additional information	
Santa Cruz County MRIC #4	Individual Assistance - DRCs	(S) Kendra Bowyer (F) Linda Durall	(S) 916-214-2043 (F) 202-809-1690	11	Assist survivors with disaster information in Santa Cruz County through MRIC.	Santa Cruz County MRIC #4  205 Front Street, Santa Cruz, CA, 95060  <b>USNG:</b> 10S EF 86919 91782  10/20/2020 1000 PDT	DR-4558-CA Objectives Supported: 16b  DSA Crew Leader (Sedarick Turner - 202-705-7431)  MCOV 53 (Operator - Joe Phillips - 225-910-5187)  Hours of Operation: 1000-1800 PDT Closed Sundays  Last day of operation: 10/21	

EPA Santa Cruz HHW	ESF 10: Hazardous Material	(OFA) Bill Jones	(OFA) 619-806-6737	36	West Division - HHW assessment, removal and QA/QC in Zones 2, 3 and 4.	10/20/2020 0700 PDT	DR-4558-CA Objectives Supported: 22b
EPA Santa Cruz HHW	ESF 10: Hazardous Material	(OFA) Bill Jones	(OFA) 619-806-6737	28	Coordinate HHW recon, removal, and staging in Santa Cruz County (see additional information for more details)	10/20/2020 0700 PDT	DR-4558-CA Objectives Supported: 22b  Manage the main staging area in Felton. Coordinate recon and tree clearance, as well as HHW collection and processing, UXO, air monitoring/sampling, high haz and asbestos sweeper work. Coordinate with West Division operating at Davenport Staging Area. Support data collection and daily field assignments. Support data collection and daily field assignments.
USEPA Santa Cruz	ESF 10: Hazardous Material	(OFA) Bill Jones	(OFA) 619-806-6737	31	East Division - HHW assessment and removal work in Zones Zones 4, 6, 8 and 15.	10/20/2020 0700 PDT	DR-4558-CA Objectives Supported: 22b

**Communications (radio frequency/channel information and/or phone contact numbers needed for this assignment):**

<b>FEMA ICS 204 FORM DIVISION ASSIGNMENT LIST</b>		<b>1. FEMA Disaster Number:</b> FEMA-4558-DR		<b>2. Operational Period:</b> 10/20/2020 0700 to 10/22/2020 0700		<b>5. Prepared By:</b> Sade Long, RESL		<b>Date</b> 10/19/2020
<b>3. Branch:</b> Inland Branch II			<b>4. Division / Group:</b> Napa County Division			<b>6. Reviewed By (OSC-State):</b> Eli Owen		<b>Date</b> 10/19/2020
<b>9. Operations Personnel: Position/Contact Information</b>						<b>7. Reviewed By (PSC-State):</b> Nicole Erlichman		<b>Date</b> 10/19/2020
<b>OSC (State):</b> Eli Owen 916-214-4132 Eli.Owen@CalOES.ca.gov  <b>OSC (FEMA):</b> Jay Denton Gildea 202-320-7179 janston.dentongildea@fema.dhs.gov  <b>Branch Director (State):</b> Artis Souza 916-591-1044 Artis.Souza@CalOES.ca.gov  <b>Branch Director (FEMA):</b> Jon Bajon 609-752-9843 jon.bajon@fema.dhs.gov  <b>Div/Group Supervisor (State):</b> Memoree McIntire 510-220-0185 Memoree.McIntire@CalOES.ca.gov  <b>Div/Group Supervisor (FEMA):</b> Joh Bajon 609-752-9843 jon.bajon@fema.dhs.gov						<b>8. Reviewed By (OSC-FEMA):</b> Jay Denton Gildea		<b>Date</b> 10/19/2020
						<b>9. Reviewed By (PSC-FEMA):</b> Anthony Trimble		<b>Date</b> 10/19/2020
<b>10. Resources Assigned</b>								
Resource Identifier	Functional Area	Resource Leader Name	Leader Contact Information	Total # of Persons	Work Assignment	Reporting Location/Time	Logistical needs, Special Instruction, additional information	
Napa County [Undesignated] LAC	Individual Assistance - DRCs	(S) Adriane Ceballos (F) Jesus Ceja	(S) 916-823-6474 (F) 202-805-6724	3	Assist survivors with disaster information in Napa County through LAC	Napa County HHSA  2751 Napa Valley Corporate Dr. Napa, CA 94558  <b>USNG:</b> 10S EH 63485 33797  10/19/2020 0900 PST	DR-4558-CA Objectives Supported: 16b  (S) Summer Wright LAC Coordinator 916-715-3558 Hours of Operation: 10/5 – TBD. Mon – Sun: 0900 - 1800  Napa County LAC will move on 10/17/2020 to: 1428 Spring Street St. Helena, CA 94574	

CA DTSC HHW Crew 1	ESF 10: Hazardous Material	(S) Kristi Placencia	(S) 916-601-7845	8	Remove HHW in Napa County	Napa County EOC 1195 Third Street, Suite B-20, Napa, California, 94559 <b>USNG:</b> 10S EH 62515 39058 10/20/2020 0700 PDT	DR-4558-CA Objectives Supported: 22b
-----------------------	----------------------------------	-------------------------	------------------	---	---------------------------	--	---

**Communications (radio frequency/channel information and/or phone contact numbers needed for this assignment):**

<b>FEMA ICS 204 FORM DIVISION ASSIGNMENT LIST</b>	<b>1. FEMA Disaster Number:</b> FEMA-4558-DR	<b>2. Operational Period:</b> 10/20/2020 0700 to 10/22/2020 0700	<b>5. Prepared By:</b> Susan Hardy, RESL	<b>Date</b> 10/19/2020
---	---	---	---	---------------------------

<b>3. Branch:</b> Inland Branch II	<b>4. Division / Group:</b> Sonoma County Division	<b>6. Reviewed By (OSC-State):</b> Eli Owen	<b>Date</b> 10/19/2020
------------------------------------	--	--	---------------------------

<b>9. Operations Personnel: Position/Contact Information</b>		<b>7. Reviewed By (PSC-State):</b> Nicole Erlichman	<b>Date</b> 10/19/2020
<b>OSC (State):</b> Eli Owen 916-214-4132 Eli.Owen@CalOES.ca.gov			
<b>OSC (FEMA):</b> Jay Denton Gildea 202-320-7179 janston.dentongildea@fema.dhs.gov			
<b>Branch Director (State):</b>		<b>8. Reviewed By (OSC-FEMA):</b> Jay Denton Gildea	<b>Date</b> 10/19/2020
<b>Branch Director (FEMA):</b> Jon Bajon 609-752-9843 jon.bajon@fema.dhs.gov			
<b>Div/Group Supervisor (State):</b>		<b>9. Reviewed By (PSC-FEMA):</b> Anthony Trimble	<b>Date</b> 10/19/2020
<b>Div/Group Supervisor (FEMA):</b> Rita Bazazzadeh (202) 316-7842 rita.bazazzadeh@fema.dhs.gov			

<b>10. Resources Assigned</b>							
<b>Resource Identifier</b>	<b>Functional Area</b>	<b>Resource Leader Name</b>	<b>Leader Contact Information</b>	<b>Total # of Persons</b>	<b>Work Assignment</b>	<b>Reporting Location/Time</b>	<b>Logistical needs, Special Instruction, additional information</b>
IGSP	ESF 15: External Affairs	(F) Carolyn Robinson-Tucker	202-706-2301	1	Virtual - Intergovernmental Congressional Affairs meeting with County Officials explaining IGA role during this disaster.	Santa Rosa City Hall 100 Santa Rosa Avenue, Santa Rosa Ca 95404 <b>USNG:</b> 10S EH 25098 54433 10/20/2020 11:00 PDT	None DR-4558-CA Objectives Supported: 31
MRSP	ESF 15: External Affairs	(F) Maria Padron	202-368-7324	2	Joint Interview with SBA PIO Elizabeth Vargas Radio Bonita 92.3 Via Remote Studio App 417 Aviation Blvd.Santa Rosa, CA 95403	417 Aviation Blvd.Santa Rosa, CA 95403 <b>USNG:</b> 10S EH 18976 62764 10/20/2020 11 a.m. PDT	None DR-4558-CA Objectives Supported: 31



Communications (radio frequency/channel information and/or phone contact numbers needed for this assignment):

<b>FEMA ICS 204 FORM DIVISION ASSIGNMENT LIST</b>		<b>1. FEMA Disaster Number:</b> FEMA-4558-DR		<b>2. Operational Period:</b> 10/20/2020 0700 to 10/22/2020 0700		<b>5. Prepared By:</b> Sade Long, RESL		<b>Date</b> 10/19/2020
<b>3. Branch:</b> Northern Branch I			<b>4. Division / Group:</b> Butte County Division			<b>6. Reviewed By (OSC-State):</b> Eli Owen		<b>Date</b> 10/19/2020
<b>9. Operations Personnel: Position/Contact Information</b>						<b>7. Reviewed By (PSC-State):</b> Nicole Erlichman		<b>Date</b> 10/19/2020
<b>OSC (State):</b> Eli Owen 916-214-4132 Eli.Owen@CalOES.ca.gov								
<b>OSC (FEMA):</b> Jay Denton Gildea 202-320-7179 janston.dentongildea@fema.dhs.gov								
<b>Branch Director (State):</b>						<b>8. Reviewed By (OSC-FEMA):</b> Jay Denton Gildea		<b>Date</b> 10/19/2020
<b>Branch Director (FEMA):</b> Therron (Tex) Burns 404-695-1614 therron.burns@fema.dhs.gov								
<b>Div/Group Supervisor (State):</b>						<b>9. Reviewed By (PSC-FEMA):</b> Anthony Trimble		<b>Date</b> 10/19/2020
<b>Div/Group Supervisor (FEMA):</b> Russell (Rusty) Witwer 202-394-0373 russell.witwer@fema.dhs.gov								
<b>10. Resources Assigned</b>								
Resource Identifier	Functional Area	Resource Leader Name	Leader Contact Information	Total # of Persons	Work Assignment	Reporting Location/Time	Logistical needs, Special Instruction, additional information	
DSA MRIC #5	Disaster Survivor Assistance	(S) Cole Glenwright (F) Julius Gibbons	(S) 916-425-0302 (F) 202-805-6325	11	Assist survivors with disaster information in Butte County through the MRIC.  Tractor Supply Company (Parking Lot Only) 2000 Feather River Blvd Oroville, CA 95965	Butte County MRIC #9  2000 Feather River Blvd, Oroville, CA, 95965  <b>USNG:</b> 10S FJ 22866 73489  10/20/2020 1000 PDT	DR-4558-CA Objectives Supported: 16b  1 DRC Kit DSA Crews 3 & 5 2 crew leads, 6 specialists Mass Care (2)  MCOV 52 (Operator - Donna Farnham - 202-802-2345)  Hours of Operations: Monday - Saturday: 1000-1600 Sunday: Closed	

MRSP	ESF 15: External Affairs	(F) Angela Byrd	202-717-1431	1	Virtual radio interview with KPAY 93.9 FM News-Talk to discuss FEMA assistance, disaster recovery.	2654 Cramer Lane, Chico, CA 95928  10/21/2020 7:30 am PDT	Weekly interview  DR-4558-CA Objectives Supported: 31
CA DTSC HHW Crews 1, 2, 3, & 4	ESF 10: Hazardous Material	(S) Kristi Placencia	(S) 916-601-7845	32	Remove HHW in Butte County	Butte County HHW  1111 Marauder Street, Chico, CA 95973  <b>USNG:</b> 10S EK 98247 06597  10/20/2020 0700 PDT	DR-4558-CA Objectives Supported: 22b

**Communications (radio frequency/channel information and/or phone contact numbers needed for this assignment):**

<b>FEMA ICS 204 FORM DIVISION ASSIGNMENT LIST</b>	<b>1. FEMA Disaster Number:</b> FEMA-4558-DR	<b>2. Operational Period:</b> 10/20/2020 0700 to 10/22/2020 0700	<b>5. Prepared By:</b> Sade Long, RESL	<b>Date</b> 10/19/2020
---	---	---	---	---------------------------

<b>3. Branch:</b> Southern Branch IV	<b>4. Division / Group:</b> Tulare County Division	<b>6. Reviewed By (OSC-State):</b> Eli Owen	<b>Date</b> 10/19/2020
--------------------------------------	--	--	---------------------------

<b>9. Operations Personnel: Position/Contact Information</b>		<b>7. Reviewed By (PSC-State):</b> Nicole Erlichman	<b>Date</b> 10/19/2020
<b>OSC (State):</b> Eli Owen 916-214-4132 Eli.Owen@CalOES.ca.gov  <b>OSC (FEMA):</b> Jay Denton Gildea 202-320-7179 janston.dentongildea@fema.dhs.gov  <b>Branch Director (State):</b>  <b>Branch Director (FEMA):</b> David Winterle 202-368-1604 david.winterle@fema.dhs.gov  <b>Div/Group Supervisor (State):</b>  <b>Div/Group Supervisor (FEMA):</b> Patti Tran 916-612-3018 patti.tran@caloes.ca.gov		<b>8. Reviewed By (OSC-FEMA):</b> Jay Denton Gildea	<b>Date</b> 10/19/2020
		<b>9. Reviewed By (PSC-FEMA):</b> Anthony Trimble	<b>Date</b> 10/19/2020

<b>10. Resources Assigned</b>							
<b>Resource Identifier</b>	<b>Functional Area</b>	<b>Resource Leader Name</b>	<b>Leader Contact Information</b>	<b>Total # of Persons</b>	<b>Work Assignment</b>	<b>Reporting Location/Time</b>	<b>Logistical needs, Special Instruction, additional information</b>
DSA Crew 1	Disaster Survivor Assistance	(F) Jazia Taylor	(F) 202-706-4454	6	Assist survivors with disaster assistance information in Tulare County	1055 W. Henderson Ave, Porterville, CA 93257  <b>USNG:</b> 11S LV 16227 94792  10/20/2020 0800 PDT	DR-4558-CA Objectives Supported: 16b  DSA Crew Leader (Jazia Taylor)  MCOV 43 (Operator - Dave Goudreau - 202-340-8455)  Hours of Operation: 0800 -1700  MCOV # pending

**Communications (radio frequency/channel information and/or phone contact numbers needed for this assignment):**

<b>ICS 206 MEDICAL PLAN JFO-RANCHO CORDOVA</b>	<b>1. Incident Name</b>	<b>2. Date Prepared</b>	<b>3. Time Prepared</b>	<b>4. Operational Period</b>
	2020 July/August/September Statewide Fires	10/19/2020	0800 PDT	0700 PDT 10/20/2020 0700 PDT 10/22/2020

### 5. Incident Medical Aid Station

Medical Aid Stations	Locations	Paramedics on Site?	
		Yes	No
AED & First Aid Station	Suite A		X
AED & First Aid Station	Suite B		X

### 6. Transportation

#### Ambulance Services

Name	Address	Phone	Paramedics on Site?
Sacramento County Fire EMS		9-1-1	Yes

### 7. Medical Care

#### Hospital

Name	Address	Phone	Helipad	
			Yes	No
UC Davis Medical Center (Level I)	315 Stockton Boulevard, Sacramento, CA 95817 <b>USNG: 10S FH 34024 68955</b>	916-734-2011	X	
Mercy Hospital of Folsom	1650 Creekside Drive, Folsom, CA 95630 <b>USNG: 10S FH 61302 81913</b>	916- 983-7400		X
Sutter Health Urgent Care Sacramento	201 Alhambra Blvd., Sacramento, CA 95816 <b>USNG: 10S FH 34007 71444</b>	916-731-7728		X
Sutter Medical Center (Stroke Center)	2825 Capitol Avenue, Sacramento, CA 95816 <b>USNG: 10S FH 33314 70200</b>	916-454-2222		X
Sacramento VA Medical Center	10535 Hospital Way, Mather CA 95655 <b>USNG: 10S FH 48432 70698</b>	916-843-7000		X

#### Urgent Care

Name	Address	Phone	Hours	
Rancho Cordova Walk- In Care	4040 Sunrise Blvd., Suite 130, Rancho Cordova, CA, 95742 <b>USNG: 10S FH 53094 69082</b>	800-972-5547	0800	1700
Concentra Urgent Care	10670 White Rock Rd Suite 100, Rancho Cordova, CA 95670 <b>USNG: 10S FH 47386 72186</b>	916-364-1733	0800	1700

### 8. Medical Emergency Procedures

- Care for all minor injuries on site.
- Stabilize all major injuries and call 9-1-1.
- Transport using local ambulance service.
- State Employees: After emergency services are called, notify the Warning Center (916-845-8911).
- Report the emergency by first calling 911.

- Limit the number of co-workers in contact with a sick person, practice physical distancing of at least six feet and wear a cloth face mask
- Provide psychological first aid.
- If providing first aid, within the scope of training, follow standard precautions, have the sick person place a face mask over their nose and mouth and physically distance at least six feet, until that person has done so and use appropriate personal protective equipment (PPE). Following care, properly discard PPE and perform hand hygiene.
- Report the emergency to your supervisor and the Safety Officer.

**ICS 206**  
**Medical Plan**

9. Prepared by  
Gina Avelar

Reviewed by  
Lucas Lambert

<b>ICS 206 MEDICAL PLAN NAPA LAC</b>	<b>1. Incident Name</b> 2020 July/ August/September Statewide Fires	<b>2. Date Prepared</b> 10/19/2020	<b>3. Time Prepared</b> 0700 PDT	<b>4. Operational Period</b> 0700 PDT 10/20/2020 0700 PDT 10/22/2020	
	<b>5. Incident Medical Aid Station</b>				
<b>Medical Aid Stations</b>	<b>Locations</b>	Paramedics on Site?			
		Yes	No		
First Aid Kit	1428 Spring Street, St. Helena, CA 94574		X		
<b>6. Transportation</b>					
Ambulance Services					
<b>Name</b>	<b>Address</b>	<b>Phone</b>	Paramedics on Site?		
Piner's Napa Ambulance Services, Inc.	1820 Pueblo Ave, Napa, CA 94558	707-224-3123 / 9-1-1	BLS Only		
<b>7. Medical Care</b>					
Hospital					
<b>Name</b>	<b>Address</b>	<b>Phone</b>	Helipad		
			Yes	No	
Adventist Health St. Helena	10 Woodland Rd., St. Helena, CA 94574	707-963-3611	X		
Queen of the Valley Medical Center	1000 Trancas St, Napa, CA 94558	707-252-4411	X		
Urgent Care					
Name	Address	Phone	Hours		
St. Joseph Health Prompt Care	1621 Imola Avenue West River Park, Napa, CA 94559	707-251-4280	10 am	8 pm	
<b>8. Medical Emergency Procedures</b>					
<ul style="list-style-type: none"> <li>- Care for all minor injuries on site.</li> <li>- Stabilize all major injuries and call 9-1-1.</li> <li>- Transport using local ambulance service.</li> <li>- State Employees: After emergency services are called, notify the Warning Center (916-845-8911).</li> <li>- Limit the number of co-workers in contact with a sick person, practice physical distancing of at least six feet and wear a cloth face mask</li> <li>- Provide psychological first aid.</li> <li>- If providing first aid, within the scope of training, follow standard precautions, have the sick person place a face mask over their nose and mouth and physically distance at least six feet, until that person has done so and use appropriate personal protective equipment (PPE). Following care, properly discard PPE and perform hand hygiene.</li> <li>- Report the emergency to your supervisor and the Safety Officer.</li> </ul>					
<b>ICS 206 Medical Plan</b>	<b>9. Prepared by</b> Gina Avelar		<b>10. Reviewed by</b> Lucas Lambert		



<b>ICS 206 MEDICAL PLAN SANTA CRUZ MRIC</b>	<b>1. Incident Name</b> 2020 July/ August/September Statewide Fires	<b>2. Date Prepared</b> 10/19/2020	<b>3. Time Prepared</b> 0700 PDT	<b>4. Operational Period</b> 0700 PDT 10/20/2020 0700 PDT 10/22/2020		
	<b>5. Incident Medical Aid Station</b>					
	<b>Medical Aid Stations</b>	<b>Locations</b>	<b>Paramedics on Site?</b>			
			Yes	No		
First Aid Kit	140 Front Street, Santa Cruz, CA 95060				X	
<b>6. Transportation</b>						
Ambulance Services						
<b>Name</b>	<b>Address</b>	<b>Phone</b>	<b>Paramedics on Site?</b>			
American Medical Response	116 Hubbard St., Santa Cruz, CA 95060	831-423-7030 / 9-1-1	Yes			
<b>7. Medical Care</b>						
Hospital						
<b>Name</b>	<b>Address</b>	<b>Phone</b>	<b>Helipad</b>			
			Yes	No		
Dominican Hospital	1555 Soquel Drive, Santa Cruz, CA 95065	831-462-7700	X			
Urgent Care						
Name	Address	Phone	Hours			
Dignity Health – Urgent Care	1820 41 <sup>st</sup> Avenue, Suite C, Capitola, CA 95010	831-867-6396	0800	2000		
<b>8. Medical Emergency Procedures</b>						
<ul style="list-style-type: none"> <li>- Care for all minor injuries on site.</li> <li>- Stabilize all major injuries and call 9-1-1.</li> <li>- Transport using local ambulance service.</li> <li>- After emergency services are called, notify the Warning Center (916-845-8911).</li> </ul>						
<b>ICS 206 Medical Plan</b>	<b>9. Prepared by</b> Gina Avelar		<b>10. Reviewed by</b> Lucas Lambert			

<b>ICS 206 MEDICAL PLAN BUTTE COUNTY</b>	<b>1. Incident Name</b>	<b>2. Date Prepared</b>	<b>3. Time Prepared</b>	<b>4. Operational Period</b>
	2020 July/ August/September Statewide Fires	10/19/2020	0700 PDT	0700 PDT 10/20/2020 0700 PDT 10/22/2020

**5. Incident Medical Aid Station**

Medical Aid Stations	Locations	Physician or Paramedics	
		Yes	No
Red Cross Medical Station	1601 Esplanade Chico, CA 95926		X

**6. Transportation**

A. Ambulance Services

Name	Address	Phone	Paramedics	
			Yes	No
Butte County Fire EMS		911	X	

**7. Medical Care**

**Workers' Compensation Facilities**

Name	Location	Phone	Paramedics	
			Yes	No
California Occupational Medical Professional	1940 Feather River Blvd., Oroville, CA 95928	530-534-5135	X	
California Occupational Medical Professional	505 Wall St. Chico, CA 95928	530-809-4907	X	

**Hospitals**

Name	Address	Phone	Helipad	
			Yes	No
Enloe Hospital Medical Center (Trauma Center)	1531 Esplanade, Chico, CA 95926	530-332-7300	X	
Oroville Hospital	2767 Olive Highway, Oroville, CA 95966	530-533-8500		X
Immediate Care Medical Center Chico (Urgent Care)	376 Vallombrosa Ave., Chico CA 95926	530-891-1676		X
Oroville Comprehensive Care Walk-In Clinic	900 Oro Dam Blvd., Oroville, CA 95966	530-534-9183		X
Oroville Hospital Urgent Care Walk-In Clinic	2767 Olive Highway, Oroville, CA 95966 (Behind Oroville Hospital)	530-532-8542		X

**8. Medical Emergency Procedures**

- Care for all minor injuries on site.
- Stabilize all major injuries and call 9-1-1.
- Transport using local ambulance service.
- State Employees: After emergency services are called, notify the Warning Center (916-845-8911).
- Limit the number of co-workers in contact with a sick person, practice physical distancing of at least six feet and wear a cloth face mask
- Provide psychological first aid.
- If providing first aid, within the scope of training, follow standard precautions, have the sick person place a

face mask over their nose and mouth and physically distance at least six feet, until that person has done so and use appropriate personal protective equipment (PPE). Following care, properly discard PPE and perform hand hygiene.

- Report the emergency to your supervisor and the Safety Officer.

<b>ICS 206</b> <b>Medical Plan</b>	9. Prepared by (Planning Support Unit Leader) Gina Avelar	Reviewed by (Safety Officer) Lucas Lambert
---------------------------------------	--	---

<b>ICS 206 MEDICAL PLAN TULARE LAC/MRIC</b>	<b>1. Incident Name</b> 2020 July/ August/September Statewide Fires	<b>2. Date Prepared</b> 10/19/2020	<b>3. Time Prepared</b> 1300 PDT	<b>4. Operational Period</b> 0800 PDT 10/20/2020 0800 PDT 10/22/2020
---	--	---------------------------------------	-------------------------------------	--

**5. Incident Medical Aid Station**

Medical Aid Stations	Locations	Paramedics on Site?	
		Yes	No
First Aid Kit	1055 Henderson Avenue, Porterville, CA 93257		X

**6. Transportation**

Ambulance Services

Name	Address	Phone	Paramedics on Site?
Imperial Ambulance Services	22 North Cottage, Porterville, CA 93257	559-784-8500	Yes

**7. Medical Care**

Hospital

Name	Address	Phone	Helipad	
			Yes	No
Sierra View Medical Center	465 W Putnam Avenue, Porterville, CA 93257	559-324-4000		X

Urgent Care

Name	Address	Phone	Hours	
Sierra View Urgent Care	263 Pearson Drive #204, Porterville, CA 93257	559-791-3907	1600-2300 1100-2100	Mon-Fri Sat-Sun
Visalia Bridge Walk-in Health Center	501 N. Bridge Street, Visalia, CA 93291	877-960-3426	0800-2200 0800-2000	Mon-Fri Sat-Sun

**8. Medical Emergency Procedures**

- Care for all minor injuries on site.
- Stabilize all major injuries and call 9-1-1.
- Transport using local ambulance service.
- State Employees: After emergency services are called, notify the Warning Center (916-845-8911).
- Limit the number of co-workers in contact with a sick person, practice physical distancing of at least six feet and wear a cloth face mask
- Provide psychological first aid.
- If providing first aid, within the scope of training, follow standard precautions, have the sick person place a face mask over their nose and mouth and physically distance at least six feet, until that person has done so and use appropriate personal protective equipment (PPE). Following care, properly discard PPE and perform hand hygiene.
- Report the emergency to your supervisor and the Safety Officer.

<b>ICS 206 Medical Plan</b>	9. Prepared by (Planning Support Unit Leader) Gina Avelar	Reviewed by (Safety Officer) Lucas Lambert
---------------------------------	--	---

<b>ICS 206 MEDICAL PLAN SHASTA LAC</b>	<b>1. Incident Name</b> 2020 July/ August/September Statewide Fires	<b>2. Date Prepared</b> 10/19/2020	<b>3. Time Prepared</b> 1300 PDT	<b>4. Operational Period</b> 0800 PDT 10/20/2020 0800 PDT 10/22/2020		
	<b>5. Incident Medical Aid Station</b>					
	<b>Medical Aid Stations</b>	<b>Locations</b>	<b>Paramedics on Site?</b>			
			Yes	No		
First Aid Kit	1890 Briggs Street, Anderson, CA 96007					
<b>6. Transportation</b>						
Ambulance Services						
<b>Name</b>	<b>Address</b>	<b>Phone</b>	<b>Paramedics on Site?</b>			
American Medical Response	4451 Caterpillar Rd #1, Redding, CA 96003	530-246-9111	Yes			
		9-1-1				
<b>7. Medical Care</b>						
Hospital						
<b>Name</b>	<b>Address</b>	<b>Phone</b>	<b>Helipad</b>			
			Yes	No		
Mercy Medical Center Redding	2175 Rosaline Ave, Redding, CA 96001	530-225-6000	X			
Urgent Care						
Name	Address	Phone	Hours			
Pulse Urgent Care Center	100 E Cypress Ave, Redding, CA 96002	530-722-1111				
<b>8. Medical Emergency Procedures</b>						
<ul style="list-style-type: none"> <li>- Care for all minor injuries on site.</li> <li>- Stabilize all major injuries and call 9-1-1.</li> <li>- Transport using local ambulance service.</li> <li>- State Employees: After emergency services are called, notify the Warning Center (916-845-8911).</li> <li>- Limit the number of co-workers in contact with a sick person, practice physical distancing of at least six feet and wear a cloth face mask</li> <li>- Provide psychological first aid.</li> <li>- If providing first aid, within the scope of training, follow standard precautions, have the sick person place a face mask over their nose and mouth and physically distance at least six feet, until that person has done so and use appropriate personal protective equipment (PPE). Following care, properly discard PPE and perform hand hygiene.</li> <li>- Report the emergency to your supervisor and the Safety Officer.</li> </ul>						
<b>ICS 206 Medical Plan</b>	9. Prepared by (Planning Support Unit Leader) Gina Avelar		Reviewed by (Safety Officer) Lucas Lambert			

## SAFETY MESSAGE/PLAN (ICS 208)

### 1. Incident Name:

2020 July/August/September  
Statewide Fires

### 2. Operational Period:

Date From: 10/20/2020 Date To: 10/22/2020  
Time From: 0700 PDT Time To: 0700 PDT

### 3. Safety Message/Expanded Safety Message, Safety Plan, Site Safety Plan:

**Heat Stress and Fatigue:** Be alert for cumulative effects of fatigue and take breaks as necessary. Effects include slower reactions, lack of attention and forgetfulness. Dehydration contributes to fatigue. As fatigue increases, injuries tend to increase also. **Stay Hydrated!**

The California Department of Public Health (CDPH) released new guidance on [June 18, 2020](#) that mandates the use of cloth face coverings by the general public statewide when outside the home, with limited exceptions.

In an effort to limit further exposure, **if you are feeling ill, do not report to work.** Contact your supervisor and follow the information below to report your signs and symptoms.

In general, every person in California must wear a face covering when:

- Inside of, or in line to enter, any indoor public space;
- Obtaining services from the healthcare sector in settings including, but not limited to, a hospital, pharmacy, medical clinic, laboratory, physician or dental office, veterinary clinic, or blood bank; and
- Waiting for or riding on public transportation or paratransit or while in a taxi, private car service, or ride-sharing vehicle.
- Engaged in work, whether at the workplace or performing work off-site, when:
  - Interacting in-person with any member of the public;
  - Working in any space visited by members of the public, regardless of whether anyone from the public is present at the time;
  - Working in any space where food is prepared or packaged for sale or distribution to others;
  - Working in or walking through common areas, such as hallways, stairways, elevators, and parking facilities;
  - In any room or enclosed area where other people (except for members of the person's own household or residence) are present when unable to physically distance.
  - Driving or operating any public transportation or paratransit vehicle, taxi, or private car service or ride-sharing vehicle when passengers are present. When no passengers are present, face coverings are also strongly recommended.
  - While outdoors in public spaces when maintaining a physical distance of 6 feet from persons who are not members of the same household or residence is not feasible.

The following individuals are exempt from wearing a face covering:

- Persons with a medical condition, mental health condition, or disability that prevents wearing a face covering. This includes persons with a medical condition for whom wearing a face covering could obstruct breathing or who are unconscious, incapacitated, or otherwise unable to remove a face covering without assistance.
- Persons who are hearing impaired, or communicating with a person who is hearing impaired, where the ability to see the mouth is essential for communication.
- Persons for whom wearing a face covering would create a risk to the person related to their work, as determined by local, state, or federal regulators or workplace safety guidelines.
- Persons who are obtaining a service involving the nose or face for which temporary removal of the face covering is necessary to perform the service.
- Persons who are seated at a restaurant or other establishment that offers food or beverage service, while they are eating or drinking, provided that they are able to maintain a distance of at least six feet away from persons who are not members of the same household or residence.
- Persons who are engaged in outdoor work or recreation such as swimming, walking, hiking, bicycling, or running, when alone or with household members, and when they are able to maintain a distance of at least six feet from others.

## NOTE:

- If you are State employees and have a condition that exempts you from wearing a mask, please contact Hilda Vargas for guidance on obtaining medical substantiation- [Hilda.Vargas@CalOES.ca.gov](mailto:Hilda.Vargas@CalOES.ca.gov), 916-845-8661. Please remember, people may have valid reasons for not wearing a face covering. If you have concerns about others not wearing face coverings, maintain physical distancing and raise the concern with Human Resources. For more specifics, please refer to the new [Guidance for the Use of Face Coverings](#).
- **IF you are a FEMA employee and unable to wear a cloth face covering, submit a reasonable accommodation request to your supervisor for: (1) an alternative face covering to be provided by FEMA, or (2) continued telework. Both requests are subject to adjudication through normal reasonable accommodation processes.** Responding to COVID-19 can take an emotional toll on you. Contact FEMA [Employee Assistance Program \(EAP\)](#) for free confidential counseling 24 hours a day, seven days a week. Toll Free: 800-222-0364 [www.FOH4you.com](http://www.FOH4you.com)

## Misc.

As mentioned previously, Facilities has provided one-time use masks to Cal OES facilities and supervisors that have requested them. In order to ensure all locations maintain a suitable inventory, Facilities will continue to provide an inventory of masks for staff use.

Immediately report to your supervisor if you feel ill.

- Maintain social distancing of (6) feet or greater, including around tables, teleconference areas, and work areas.
- Practice proper hand hygiene - Wash your hands with soap and water for at least 20 seconds.
- Review and understand the Health and Safety Plan specific to COVID-19 incident.
- Immediately report to your supervisor if you feel ill.
- Be familiar with the building emergency plans, evacuation routes, shelter-in-place plans, and AED.
- Critical Incident stress during these uncertain times can affect anyone at any time. Peer counselors are available as a resource 24 hours a day @ (916) 445-4337 or [COVIDPeerSupport@SOC.CalOES.ca.gov](mailto:COVIDPeerSupport@SOC.CalOES.ca.gov).
- Ensure good communication and accountability plans are established and followed by all staff.
- The policy regarding bringing food into the State Operations Center has been updated in the Health and Safety Procedure.

## Symptoms of Covid-19 (per CDPH) **Please, do not come to work if you are sick.**

- Fever, Chills, Cough, Shortness of breath, Fatigue, Muscle or body aches, Headache, New loss of taste or smell, Sore throat, Congestion or Runny Nose, Nausea, Vomiting or Diarrhea.

## **This general COVID-19 response safety message applies starting Fri 7/10/20 and across all Operational Periods. It will be revised as needed.**

- All CDPH employees, contractors, and trainees taking part in field visits or other response activities will not place themselves or allow others to be placed in a hazardous situation.
- If you ever feel that you and/or your co-workers are in a danger, immediately remove yourself and co-workers to a safe place.
- Follow CDPH guidance for PPE, face masks, and cloth face coverings.
- Remain mindful of changing surroundings, don't be caught off guard.
- Mental and emotional stress can lead to accidents; watch out for each other in these trying times.
- Ensure you have rostered and received a deployment-specific safety briefing from the Safety Officer.
- Identify the nearest medical facility in case of emergency.

## **Observe safety procedures as required in all facilities:**

### **FIELD SUPPLIES**

- Hand sanitizer; Cleaning/disinfecting wipes
- Adequate supply of PPE
- Supplies and methods to decontaminate or dispose of PPE
- Masks and/or cloth face coverings
- Change of clothes/shoes or an outer layer that is easy to remove before getting into the car, as necessary

## TRAVEL

### \*\*\*Air travel

- Sit where you have entire row to yourself, if possible; additionally, if at all possible, have 2 rows in front and 2 rows in back clear
- Wipe down the tray, armrests, and other surfaces
- Clean hands before eating or drinking

### \*\*\*Public transportation

- Avoid touching surfaces as much as possible
- Wash hands or use hand sanitizer after touching ticket dispensers, elevator buttons, etc.

### \*\*\*Taxi/Rideshare (Uber, Lyft)

- Avoid airport multi-passenger van transportation as much as possible
- Avoid sitting close to other passengers and avoid sitting up front with the driver
- Make sure the driver and other passengers wear face coverings
- Avoid getting into a car where the driver is not wearing a face covering
- Avoid handling cash, if possible

### \*\*\*Driving

- Observe the speed limit, drive with headlights on, wear your seatbelt
- Do not leave belongings in plain view in the vehicle; lock the car

## PERSONAL SAFETY

- Do not shake hands
- Touch as little as possible
- Practice physical distancing, maintain 6 feet distance from others, as possible
- Avoid touching your face
- Bring and wear PPE, face masks, or cloth face coverings as required
- Wash hands as often as practicable
- If visiting facilities outside of an LHD office, do not eat, drink, smoke or apply cosmetics (even lip balm) at the site
- Be aware of other personal safety considerations: safe driving, injuries, violent encounters, inter-personal conflicts due to stressful situations.

4. Site Safety Plan Required? Yes  No

Approved Site Safety Plan(s) Located At:

5. Prepared by: Name: Lucas Lambert Position/Title: Safety Officer Signature:

ICS 208

IAP Page \_\_\_\_\_

Date/Time: 10/19/2020 0900



**GENERAL MESSAGE (FEMA ICS FORM 213)**

**TO:** All Hands

**POSITION:**

**FROM:** Wayne Baskin

**POSITION:** Safety Officer

**SUBJECT:** Employee Advisory – FEMA Forward Framework - COVID Preventative Measures **DATE/TIME:** 09/28/2020 1800 PST

**MESSAGE:**

Employee Advisory – FEMA Forward Framework and COVID Preventative Measures  
FEMA Forward Framework and COVID Preventative Measures

This advisory is a reminder to all employees that FEMA has established an agency-wide FEMA Forward Framework outlining the operational requirements of all FEMA controlled spaces including Headquarters, Regional Offices, Joint Field Offices, Disaster Recovery Centers and any other physical locations where FEMA holds a Lease or License Use Agreement.

The FEMA Forward Framework mandates the following requirements be fully implemented:

- **Cleaning Contract:** Must have a cleaning contract in place to clean the facility (or portion following a confirmed or suspected COVID-19 case) with special attention to frequently touched surfaces (doorknobs, elevator controls, etc.)
- **Hygiene Supplies:** Must ensure have (and can acquire) sufficient hygiene supplies, including but not limited to hand sanitizer, hand soap, paper towels, toilet paper, and disinfectant wipes.
- **Enhanced Screening:** Must follow established enhanced screening criteria and protocols to include implementation of temperature checks to prohibit individuals with an elevated temperature (>100.4°F) from entering the facility.
- **Proactive Communications:** Must have established effective communications for all FEMA employees returning to the facility.
- **Social Distancing:** Must establish social distancing protocols of at least 6' for workspaces and common areas.
- **Cloth Face Coverings:** Employees are required to wear cloth face coverings in all common areas including entrances, elevators, kitchens, bathrooms and conference rooms, and when it is not possible to maintain at least 6' of social distancing. Cloth face coverings will be provided by FEMA.

In addition to the FEMA Forward Framework, each employee has an individual responsibility to protect themselves and their co-workers. COVID prevention requires a team approach with each individual playing their part.

Remember to regularly:

- **Monitoring your health daily;** if you feel sick and/or develop symptoms, stay home or in your hotel and contact your supervisor.
- **Maintain good social distance (about 6 feet).** This is very important in preventing the spread of COVID-19.
- **Wear a cloth face covering when you are in FEMA Facilities,** where mandated by state/local ordinances and any time when other people may get too close (such as when traveling).
- **Cover your cough or sneeze with a tissue,** then throw the tissue in the trash. Or use the crook of your arm (bending the elbow).
- **Wash your hands often with soap and water.** If soap and water are not available, use a hand sanitizer that contains at least 60% alcohol.
- **Avoid touching your eyes, nose, and mouth with unwashed hands.**
- **Routinely clean and disinfect your personal frequently touched surfaces** such as laptops, cell phones, and PIV cards.
- **Maintain Situational Awareness** by reviewing related FEMA documents, briefing materials and by visiting the FEMA COVID Website.

If unable to wear a cloth face covering, submit a reasonable accommodation request to their supervisor for: (1) an alternative face covering to be provided by FEMA, or (2) continued telework. Both requests are subject to adjudication through normal reasonable accommodation processes.

The intended cumulative effect of all of these protective measures is to create a work environment with the lowest possible risk of COVID exposure.

Responding to COVID-19 can take an emotional toll on you. Contact your Employee Assistance Program (EAP) for free confidential counseling 24 hours a day, seven days a week. Toll Free: 800-222-0364 [www.FOH4You.com](http://www.FOH4You.com)

Thank you for your flexibility and support to keep our colleagues and workplace safe, as well as your commitment to carry our critical mission forward during this challenging time.

**SIGNATURE:** Wayne Baskin

**POSITION:** Safety Officer

**REPLY:**

N/A

**DATE/TIME:**

**SIGNATURE/POSITION:** N/A

FEMA ICS FORM 230 INTERNAL DAILY MEETING SCHEDULE		1. FEMA Disaster Number: FEMA-4558-DR	2. Date/Time Prepared: 10/19/2020 1530 PDT
3. Operational Period (Date/Time): 10/20/2020 0700 PDT to 10/22/2020 0700 PDT			
Time / Time Zone	Meeting Name	Purpose / Attendees	Meeting Location
<b>Tuesday 10/20/2020</b>			
0745 PDT	FEMA FCO Stand Up	Monday - Friday (Recurring)	Hosted on MS Teams via invite
0800 PDT	Daily FEMA Operational Briefing	Monday-Saturday (Recurring) Brief personnel regarding Daily Situational Report Operations, IA, DSA, Logistics, Mitigation, IGA,	By Phone Conference Call Phone number 1-800-320-4330 Pin # 201395#
0900 PDT	Statewide Tribal Assistance Coordination Group Call	To update Tribal Leaders on fire incidents throughout the state. Cal OES	Invite Only POC: Pamela Joe
0930 PDT	State-Federal IA Coordination Meeting	Monday - Friday (Recurring) Coordination call to discuss any IA updates: LAC's, PDA's, Housing, DCM, SBA, etc and reports or action items that are necessary. Nicole.Benson@CalOES.ca.gov	Invite Only POC: Nicole Benson
1030 PDT	Other	ALL SITUATIONAL REPORTS DUE TO JFO SITSTAT	
1530 PDT	Legislative Coordination Call	Tuesday, Wednesday, and Friday COVID / Wildfire briefing to CA Legislature and Officials (SCO/FCO - Wildfire specific)	By Invitation
1600 PDT	LAC Coordination Call	Monday - Saturday (Recurring) LAC Coordinators check in on LAC Liaisons CalOES Summer.Wright@CalOES.ca.gov	Invite Only POC: Summer Wright
1700 PDT	Daily FEMA Operational Briefing	Monday-Saturday (Recurring) Brief personnel regarding Daily Situational Report Operations, IA, DSA, Logistics, Mitigation, IGA,	By Phone Conference Call Phone number 1-800-320-4330 Pin # 201395#
1730 PDT	FEMA FCO Sync Up	Monday - Saturday (Recurring) FEMA Command Staff and General Staff	Hosted on MS Teams via invite
<b>Wednesday 10/21/2020</b>			
0745 PDT	FEMA FCO Stand Up	Monday - Friday (Recurring)	Hosted on MS Teams via invite
0800 PDT	Daily FEMA Operational Briefing	Monday-Saturday (Recurring) Brief personnel regarding Daily Situational Report Operations, IA, DSA, Logistics, Mitigation, IGA,	By Phone Conference Call Phone number 1-800-320-4330 Pin # 201395#
0830 PDT	Objectives Meeting	Monday, Wednesday, and Friday (Recurring) Review existing objectives for possible changes. Nicole Erlichman, State Plans 916-291-7264 Nicole.Erlichman@CalOES.ca.gov	JFO Yosemite Room <a href="https://fema.zoomgov.com/j/1602367051">https://fema.zoomgov.com/j/1602367051</a> Passcode: 4558 Call-in: 1-646-828-7666, 1602367051#
0900 PDT	State Ops Briefing	Monday, Wednesday, and Friday (Recurring) Brief on shortfalls, gaps, and forecasting week of operations. Kim Bowman, State Ops 916-539-5613 ContractorKim.Bowman@CalOES.ca.gov	Meeting Information TBD Invite Only
0930 PDT	State-Federal IA Coordination Meeting	Monday - Friday (Recurring) Coordination call to discuss any IA updates: LAC's, PDA's, Housing, DCM, SBA, etc and reports or action items that are necessary. Nicole.Benson@CalOES.ca.gov	Invite Only POC: Nicole Benson

1000 PDT	Command and General Staff Meeting	Monday, Wednesday, and Friday (Recurring) Review approved incident objectives. Provide, share important information and immediate direction. UCG, Command and General Staff, Situation Unit Leader, designated and invited guests. Nicole Erlichman, State Plans 916-539-5613 Nicole.Erlichman@CalOES.ca.gov	JFO Yosemite Room <a href="https://fema.zoomgov.com/j/1602367051">https://fema.zoomgov.com/j/1602367051</a> : Passcode: 4558 Call-In: 1-646-828-7666, 1602367051#
1030 PDT	Other	ALL SITUATIONAL REPORTS DUE TO JFO SITSTAT	
1030 PDT	Other	ALL STAFFING PATTERNS / MEETING UPDATES DUE TO JFO PLANS	
1200 PDT	Other	ALL TACTICS DUE BY 1200	
1300 PDT	Operations Tactics Meeting	Monday, Wednesday, and Friday (Recurring) Review and finalize the draft Operational Planning Worksheets (FEMA-ICS 215). All Operations personnel, ESF leads, Community Relations Lead responsible for Incident Action Planning, RESL, LSC, and SOFR.	JFO Yosemite Room <a href="https://fema.zoomgov.com/j/1602367051">https://fema.zoomgov.com/j/1602367051</a> : Passcode: 4558 Call-In: 1-646-828-7666, 1602367051#
1500 PDT	Debris Task Force Meeting	Monday, Wednesday, and Friday (Recurring) To coordinate across debris removal if stakeholders and discuss due outs.	Microsoft Teams 415-906-4037 ID: 894042440 POC Cole Glenwright
1530 PDT	Legislative Coordination Call	Tuesday, Wednesday, and Friday COVID / Wildfire briefing to CA Legislature and Officials (SCO/FCO - Wildfire specific)	By Invitation
1600 PDT	LAC Coordination Call	Monday - Saturday (Recurring) LAC Coordinators check in on LAC Liaisons CalOES Summer.Wright@CalOES.ca.gov	Invite Only POC: Summer Wright
1630 PDT	Planning Meeting	Monday, Wednesday, and Friday (Recurring) Approve the IAP for the next operational period UCG, Command and General Staff, SITL, designated and invited guests. Nicole Erlichman, State Plans 916-291-7264 Nicole.Erlichman@CalOES.ca.gov	JFO Yosemite Room <a href="https://fema.zoomgov.com/j/1602367051">https://fema.zoomgov.com/j/1602367051</a> : Passcode: 4558 Call-In: 16468287666, 1602367051#
1700 PDT	Daily FEMA Operational Briefing	Monday-Saturday (Recurring) Brief personnel regarding Daily Situational Report Operations, IA, DSA, Logistics, Mitigation, IGA,	By Phone Conference Call Phone number 1-800-320-4330 Pin # 201395#
1700 PDT	Schools Task Force	Wednesday (Recurring) To coordinate schools if issues between CDE and Local Jurisdiction and identify issues and need of Cal OES Leadership attention.	Microsoft Teams Invite Only POC: Jeremy Daly
1730 PDT	FEMA FCO Sync Up	Monday - Saturday (Recurring) FEMA Command Staff and General Staff	Hosted on MS Teams via invite
4. Prepared By: Gina Avelar, PSUL		5. Reviewed By: Nicole Erlichman, PSC	

<b>FEMA ICS FORM 230 EXTERNAL DAILY MEETING SCHEDULE</b>		<b>1. FEMA Disaster Number:</b> FEMA-4558-DR	<b>2. Date/Time Prepared:</b> 10/19/2020 0900 PDT
<b>3. Operational Period (Date/Time):</b> 10/20/2020 0700 PDT to 10/22/2020 0700 PDT			
<b>Time / Time Zone</b>	<b>Meeting Name</b>	<b>Purpose / Attendees</b>	<b>Meeting Location</b>
<b>Tuesday 10/20/2020</b>			
N/A	N/A	N/A	N/A
<b>Wednesday 10/21/2020</b>			
1300 PDT	Disaster Recovery Meeting Butte County	Wednesday (Recurring) To provide Butte County with recovery operation support to help survivors and infrastructure recover from the North Complex fire. POC: Eli Owens Eli.Owens@CalOES.ca.gov	Invite Only
<b>4. Prepared By:</b> Gina Avelar, PSUL		<b>5. Reviewed By:</b> Nicole Erlichman, PSC	