



JOINT INCIDENT ACTION PLAN

Joint Field Office
2995 Prospect Park Dr.
Rancho Cordova, CA 95670
2020 July/August/September Statewide Fires
FEMA-4558 DR-CA
IAP #48
Operational Period
0700 PDT 10/16/2020 to 0700 PDT 10/18/2020

Ryan Buras
for Ryan Buras
SCO

Willie G. Nunn
for Willie G. Nunn
FCO



Confidentiality Notice

This document is for the sole use of the intended recipient(s) and may contain confidential and privileged information. Any unauthorized review, use, disclosure, or distribution is prohibited without the express written consent of the Cal OES Executive Offices.

FEMA ICS FORM 202 INCIDENT OBJECTIVES	1. FEMA Disaster Number: FEMA-4558-DR	2. Date/Time Prepared: 10/15/2020 1000 PDT
4. Operational Period: 10/16/2020 0700 PDT to 10/18/2020 0700 PDT		
5. General objectives for the Incident:		
Objective Number	Description	
	PRIORITIES	
	Ensure safety, protection, and continuity of government operations and other essential workforce and services.	
	Protect vulnerable populations including older adults, persons with access and functional needs, homeless populations, and persons in congregate and institutional settings.	
	Support rapid and comprehensive community recovery and integration of local, state, private sector and federal recovery resources while maintaining environmental and historical preservation of the impacted areas.	
	Ensure displaced survivors are in accessible, safe, permanent housing and future risks to housing are reduced.	
	Integrate tribal considerations into all recovery operations.	
	Ensure accurate, accessible, and jointly coordinated public information.	
	Provide equitable regional coordination, collaboration, decision-making, and resource sharing.	
	Unify Task Force construct in support of local recovery priorities.	
	Ensure infrastructure systems are restored with greater resiliency to future risks.	
	OBJECTIVES	
11 b.	Sustain health and safety including medical screening and peer support for personnel and visitors at operational facilities.	
29.	Individual Assistance (IA) – Complete survivor registration for all IA designated counties NLT 11/23/2020.	
16 b.	Individual Assistance - Review, approve, resource and implement approved IA programs in IA designated counties NLT 12/31/2020.	
30.	Public Assistance – Submit all Request for Public Assistance to FEMA NLT 11/01/2020	
36.	Hazard Mitigation – Provide multi-hazard mitigation information, education, and outreach, including National Flood Insurance Program, in impacted counties NLT 11/15/2020.	
7 b.	Access and Functional Needs (AFN) – Serve as the “front line” for AFN integration within task force produced plans, best practices, and guidance documents a minimum of once per week.	
35.	Access and Functional Needs – Provide daily briefings for AFN stakeholders as means to raising overall understanding, awareness, and response among whole community partners and individuals with access or functional needs.	
9 b.	Identify and address any unmet needs with tribal communities.	
20.	Debris TF – CalRecycle to develop a draft for debris removal solicitation documents NLT 10/18/2020.	
21.	Debris TF – Cal OES Legal Affairs to complete draft of Right of Entry permit (pending FEMA eligibility determination) NLT 10/23/2020.	
22.	Debris TF – Debris Removal TF to complete household hazardous waste removal from a total of 1,657 parcels NLT 10/16/2020 (Department of Toxic Substance Control and US Environmental Protection Agency combined; terrain and size of parcels may affect this number).	
27.	Watershed/Debris Flow TF – Create a streamlined process for local agencies to both receive critical disaster updates and report unmet needs to Cal OES NLT 10/20/2020.	
28.	Watershed/Debris Flow TF – Develop trifold report for Recovery Leadership review that tracks total locally identified Values at Risk and percent addressed NLT 10/20/2020.	
23.	Schools TF – Address all locally-identified unmet needs through resource distribution, information sharing, and technical assistance for fire impacted school districts planning to reopen facilities for in-school learning in October 2020 NLT 10/31/2020.	
24.	Schools TF – Communicate debris removal schedules with fire impacted school districts and coordinate the prioritization of schools planning to reopen facilities in October 2020 NLT 10/31/2020.	
25.	Schools TF – Support the delivery of distance learning educational materials for fire impacted school districts planning to reopen for distance learning in October 2020 NLT 10/31/2020.	
26.	Schools TF – Update evacuation order mapping for school districts impacted by the El Dorado and August Complex fires to plan to address unmet needs in closed school districts in Trinity and San Bernardino counties NLT 10/19/2020.	
31.	Public Information – Share disaster recovery progress through developing a minimum of three (3) proactive and reactive informational products per week highlighting new topics or significant issues that inform the public.	
32.	Interagency Recovery Coordination – Identify appropriate State and Federal RSF Agencies to support the mission NLT 10/30/2020.	
6. Weather Forecast for Period (Only if significant to Operations)		

Thursday-Friday

- Moderate to high heat impacts continue across much of coastal California
- Temperatures near record levels in some areas, reaching well into the 90s
- Critical fire weather conditions for much of northern California through Friday morning
- Strong north to east winds gusting 35-50 mph and very low humidity may lead to the rapid spread of new or existing fires
- Critical fire weather conditions also expected across portions of southern California late tonight through Friday afternoon

Saturday-Wednesday

- Temperatures cooling closer to normal through the weekend and early next week
- Elevated fire weather conditions continue through the weekend given ongoing very dry conditions

7. General/Safety Message

- Maintain social distancing of 6-feet or greater, in all common areas.
- If sick with flu or flu like symptoms do not report to work.
- Familiarize yourself with the facility OEP, evacuation routes and shelter-in-place.
- Control all trip and safety hazards by marking it with visible warnings or barriers.
- Ensure good communication and accountability plans are established and complied with.
- Comply with the Health and Safety Plan specific to the COVID-19 incident including the Cal OES updated Face Covering Policy (06/28/20) that requires face coverings.
- Critical Incident stress during these uncertain times can affect anyone at any time. Peer counselors are available as a resource 24 hours a day @ (916) 445-4337 or CovidPeerSupport@SOC.CalOES.ca.gov.
- FEMA's Employee Assistance Program (EAP) support is available 24 hours a day, 7 days a week by calling 800-222-0364 or on the web at www.FOH4You.com.
- Vehicle COVID-19 protection measures: Limit of one passenger, who will sit in the far rear seat, both driver and passenger must wear a face mask/covering, keep hand sanitizer available, use disinfectant wipes on window, radio, navigation and other control buttons, seat adjustment levers, armrests, door handles, seat belt buckles, etc., and keep air circulating by opening windows or using air conditioning.
- If in doubt about the safety of any activity, stop and re-evaluate to ensure that the activity can be performed safely and consult the Safety Officer as necessary.

8. Attachments (mark if attached)

<input checked="" type="checkbox"/> Assignment Lists - ICS 204	<input checked="" type="checkbox"/> Organization Chart - ICS 207	<input checked="" type="checkbox"/> Safety Message - ICS 208
<input checked="" type="checkbox"/> Radio Communications Plan - ICS 205	<input type="checkbox"/> Air Operations Summary - ICS 220	<input checked="" type="checkbox"/> Safety Message ICS 213 (FEMA Forward Framework))
<input checked="" type="checkbox"/> Telephone Communications Plan - ICS 205 A	<input checked="" type="checkbox"/> Meeting Schedule - ICS 230	<input type="checkbox"/>
<input checked="" type="checkbox"/> Medical Plan - ICS 206	<input checked="" type="checkbox"/> Incident Map	<input type="checkbox"/>

9. Prepared by:

Gina Avelar
PSUL

Date/Time: 10/15/2020 1455 PDT

10. Reviewed By:

Nicole Erlichman
PSC

Date/Time: 10/15/2020 1800 PDT

FEMA ICS Form 205A Incident Telephone Communication Plan	FEMA Disaster Number: FEMA-4558-DR	2. Operational Period: 10/16/2020 0700 PDT to 10/18/2020 0700 PDT
---	--	---

3. Contact List
Incident Facilities/Contacts

Incident Facilities	Facility Operational Hours	Phone Number	Additional Info
<p align="center"> Joint Field Office , 2995 Prospect Park Dr , Rancho Cordova , CA 95670-6006 USNG: 10S FH 50077 73080 </p>	Monday: 0700 PDT - 1900 PDT Tuesday: 0700 PDT - 1900 PDT Wednesday: 0700 PDT - 1900 PDT Thursday: 0700 PDT - 1900 PDT Friday: 0700 PDT - 1900 PDT Saturday: 0700 PDT - 1900 PDT Sunday: Closed	<p align="center"> Holli Griffiths Phone: 202-718-1156 </p>	Working Hours: 0730 - 1730 for State staff, unless mission critical
<p align="center"> DC-Tracy , Distribution Center , 1547 E Grant Line Road , Tracy , California 95304 USNG: 10S FG 40751 79750 </p>	Monday: 0900 PDT - 1700 PDT Tuesday: 0900 PDT - 1700 PDT Wednesday: 0900 PDT - 1700 PDT Thursday: 0900 PDT - 1700 PDT Friday: 0900 PDT - 1700 PDT Saturday: Closed Sunday: Closed	<p align="center"> Randall Pape Phone: 209-395-7827 </p>	
<p align="center"> Sharpe Depot , ISB , 700 Roth Road , French Camp , California 95231 USNG: 10S FG 52286 91207 </p>	Monday: 0900 PDT - 1700 PDT Tuesday: 0900 PDT - 1700 PDT Wednesday: 0900 PDT - 1700 PDT Thursday: 0900 PDT - 1700 PDT Friday: 0900 PDT - 1700 PDT Saturday: Closed Sunday: Closed	<p align="center"> Gary Melvin Phone: 256-343-6609 </p>	
<p align="center"> Lake County EOC , EOC , 1375 Hoyt Ave , Lakeport , CA 94534 USNG: 10S EJ 07508 28263 </p>	Monday: 0700 PDT - 0700 PDT Tuesday: 0700 PDT - 0700 PDT Wednesday: 0700 PDT - 0700 PDT Thursday: 0700 PDT - 0700 PDT Friday: 0700 PDT - 0700 PDT Saturday: 0700 PDT - 0700 PDT Sunday: 0700 PDT - 0700 PDT	<p align="center"> Watch Phone: 707-262-4090 </p>	
<p align="center"> Napa County EOC , EOC , 1195 Third Street, Suite B-20 , Napa , California 94559 USNG: 10S EH 62515 39058 </p>	Monday: 0700 PDT - 0700 PDT Tuesday: 0700 PDT - 0700 PDT Wednesday: 0700 PDT - 0700 PDT Thursday: 0700 PDT - 0700 PDT Friday: 0700 PDT - 0700 PDT Saturday: 0700 PDT - 0700 PDT Sunday: 0700 PDT - 0700 PDT	<p align="center"> Watch Phone: 707-299-1892 </p>	
<p align="center"> Napa County LAC , 2751 Napa Valley Corporate Drive , Napa , CA 94558 USNG: 10S EH 63485 33797 </p>	Monday: 0900 PDT - 1800 PDT Tuesday: 0900 PDT - 1800 PDT Wednesday: 0900 PDT - 1800 PDT Thursday: 0900 PDT - 1800 PDT Friday: 0900 PDT - 1800 PDT Saturday: 0900 PDT - 1800 PDT Sunday: Closed	<p align="center"> Adriane Ceballos (S) Phone: 916-823-6474 </p>	Napa County LAC will move on 10/17/2020 to: 1428 Spring Street St. Helena, CA 94574

<p>San Mateo County EOC , EOC , 501 Winslow Street , Redwood City , California 94063</p> <p>USNG: 10S EG 67955 49458</p>	<p>Monday: 0700 PDT - 0700 PDT Tuesday: 0700 PDT - 0700 PDT Wednesday: 0700 PDT - 0700 PDT Thursday: 0700 PDT - 0700 PDT Friday: 0700 PDT - 0700 PDT Saturday: 0700 PDT - 0700 PDT Sunday: 0700 PDT - 0700 PDT</p>	<p>Watch</p> <p>Phone: 650-363-4915</p>	
<p>Santa Cruz County EOC , EOC , 5200 Soquel Avenue , Santa Cruz , California 95062</p> <p>USNG: 10S EF 90975 93664</p>	<p>Monday: 0700 PDT - 0700 PDT Tuesday: 0700 PDT - 0700 PDT Wednesday: 0700 PDT - 0700 PDT Thursday: 0700 PDT - 0700 PDT Friday: 0700 PDT - 0700 PDT Saturday: 0700 PDT - 0700 PDT Sunday: 0700 PDT - 0700 PDT</p>	<p>Watch</p> <p>Phone: 831-454-2166</p>	
<p>Santa Cruz County MRIC #4 , 205 Front Street , Santa Cruz , CA 95060</p> <p>USNG: 10S EF 86919 91782</p>	<p>Monday: 1100 PDT - 1700 PDT Tuesday: 1100 PDT - 1700 PDT Wednesday: 1100 PDT - 1700 PDT Thursday: 1100 PDT - 1700 PDT Friday: 1100 PDT - 1700 PDT Saturday: 1100 PDT - 1700 PDT Sunday: Closed</p>	<p>Linda Durall</p> <p>Phone: 202-809-1690</p>	
<p>Solano County EOC , EOC , 530 Clay Street , Fairfield , California 94553</p> <p>USNG: 10S EH 84187 33790</p>	<p>Monday: 0700 PDT - 0700 PDT Tuesday: 0700 PDT - 0700 PDT Wednesday: 0700 PDT - 0700 PDT Thursday: 0700 PDT - 0700 PDT Friday: 0700 PDT - 0700 PDT Saturday: 0700 PDT - 0700 PDT Sunday: 0700 PDT - 0700 PDT</p>	<p>Watch</p> <p>Phone: 707-784-1600</p>	
<p>Sonoma County EOC , EOC , 2300 County Center Drive , Santa Rosa , California 95403</p> <p>USNG: 10S EH 23957 57025</p>	<p>Monday: 0700 PDT - 0700 PDT Tuesday: 0700 PDT - 0700 PDT Wednesday: 0700 PDT - 0700 PDT Thursday: 0700 PDT - 0700 PDT Friday: 0700 PDT - 0700 PDT Saturday: 0700 PDT - 0700 PDT Sunday: 0700 PDT - 0700 PDT</p>	<p>Watch</p> <p>Phone: 707-565-1152</p>	
<p>Yolo County EOC , EOC , 120 West Main Street, Ste. E , Woodland , California 95695</p> <p>USNG: 10S FH 07402 81702</p>	<p>Monday: 0700 PDT - 0700 PDT Tuesday: 0700 PDT - 0700 PDT Wednesday: 0700 PDT - 0700 PDT Thursday: 0700 PDT - 0700 PDT Friday: 0700 PDT - 0700 PDT Saturday: 0700 PDT - 0700 PDT Sunday: 0700 PDT - 0700 PDT</p>	<p>N/A</p> <p>Phone: 530-406-4930</p>	
<p>Monterey County, EOC , EOC , 1322 Navidad Rd. , Salinas , CA 93906</p> <p>USNG: 10S FF 21829 62270</p>	<p>Monday: 0700 PDT - 0700 PDT Tuesday: 0700 PDT - 0700 PDT Wednesday: 0700 PDT - 0700 PDT Thursday: 0700 PDT - 0700 PDT Friday: 0700 PDT - 0700 PDT Saturday: 0700 PDT - 0700 PDT Sunday: 0700 PDT - 0700 PDT</p>	<p>N/A</p> <p>Phone: 831-796-1905</p>	

<p>Paradise Long Term Recovery Office , Long Term Recovery Office , 7204 Skyway , Paradise , CA 95969</p> <p>USNG: 10S FK 18523 02698</p>	Monday: 0700 PDT - 1530 PDT Tuesday: 0700 PDT - 1530 PDT Wednesday: 0700 PDT - 1530 PDT Thursday: 0700 PDT - 1530 PDT Friday: 0700 PDT - 1530 PDT Saturday: Closed Sunday: Closed	<p>Kenyatta Russell</p> Phone: 202-714-2735	
<p>Butte County EOC , EOC , 202 Mira Loma Dr. , Oroville , CA 95965</p> <p>USNG: 10S FJ 24426 75704</p>	Monday: 0700 PDT - 2000 PDT Tuesday: 0700 PDT - 2000 PDT Wednesday: 0700 PDT - 2000 PDT Thursday: 0700 PDT - 2000 PDT Friday: 0700 PDT - 2000 PDT Saturday: 0700 PDT - 2000 PDT Sunday: 0700 PDT - 2000 PDT	<p>N/A</p> Phone: 530-624-4729	
<p>Butte County MRIC #9 , Tractor Supply Company (Parking Lot Only) , 2000 Feather River Blvd , Oroville , CA 95965</p> <p>USNG: 10S FJ 22866 73489</p>	Monday: 1000 PDT - 1600 PDT Tuesday: 1000 PDT - 1600 PDT Wednesday: 1000 PDT - 1600 PDT Thursday: 1000 PDT - 1600 PDT Friday: 1000 PDT - 1600 PDT Saturday: 1000 PDT - 1600 PDT Sunday: Closed	<p>Tony Faison</p> Phone: 202-531-0458	
<p>Plumas County EOC , EOC , 270 County Hospital Road, Suite 127 , Quincy , CA 95971</p> <p>USNG: 10S FK 73887 24466</p>	Monday: 0800 PDT - 2000 PDT Tuesday: 0800 PDT - 2000 PDT Wednesday: 0800 PDT - 2000 PDT Thursday: 0800 PDT - 2000 PDT Friday: 0800 PDT - 2000 PDT Saturday: 0800 PDT - 2000 PDT Sunday: 0800 PDT - 2000 PDT	<p>N/A</p> Phone: 530-258-6772	
<p>Yuba County EOC , EOC , 915 8th Street, Suite 117 , Marysville , CA 95901</p> <p>USNG: 10S FJ 21164 33582</p>	Monday: 0700 PDT - 1900 PDT Tuesday: 0700 PDT - 1900 PDT Wednesday: 0700 PDT - 1900 PDT Thursday: 0700 PDT - 1900 PDT Friday: 0700 PDT - 1900 PDT Saturday: 0700 PDT - 1900 PDT Sunday: 0700 PDT - 1900 PDT	<p>N/A</p> Phone: 530-749-7520	
<p>Fresno County EOC , EOC , 333 W Pontiac Way, Bldg 6 , Clovis , CA 93612</p> <p>USNG: 11S KA 57636 74966</p>	Monday: 0700 PDT - 0700 PDT Tuesday: 0700 PDT - 0700 PDT Wednesday: 0700 PDT - 0700 PDT Thursday: 0700 PDT - 0700 PDT Friday: 0700 PDT - 0700 PDT Saturday: 0700 PDT - 0700 PDT Sunday: 0700 PDT - 0700 PDT	<p>N/A</p> Phone: 559-600-6917	
<p>Los Angeles County EOC , EOC , 1275 N Eastern Ave , Los Angeles , CA 90063-3217</p> <p>USNG: 11S LT 91629 68500</p>	Monday: 0800 PDT - 1800 PDT Tuesday: 0800 PDT - 1800 PDT Wednesday: 0800 PDT - 1800 PDT Thursday: 0800 PDT - 1800 PDT Friday: 0800 PDT - 1800 PDT Saturday: 0800 PDT - 1800 PDT Sunday: 0800 PDT - 1800 PDT	<p>Watch</p> Phone: 323-459-3779	Undesignated County

County of Santa Clara Office of Emergency Services , EOC , 55 West Younger Avenue, Suite 450 , San Jose , CA 95110 USNG: 10S EG 96883 34779	Monday: 0800 PDT - 1700 PDT Tuesday: 0800 PDT - 1700 PDT Wednesday: 0800 PDT - 1700 PDT Thursday: 0800 PDT - 1700 PDT Friday: 0800 PDT - 1700 PDT Saturday: 0800 PDT - 1700 PDT Sunday: 0800 PDT - 1700 PDT	N/A Phone: 408-808-7800	Remote on weekends
Tulare County LAC , 1055 Henderson Ave , Porterville , CA 93257 USNG: 11S LV 21027 94673	Monday: 0800 PDT - 1700 PDT Tuesday: 0800 PDT - 1700 PDT Wednesday: 0800 PDT - 1700 PDT Thursday: 0800 PDT - 1700 PDT Friday: 0800 PDT - 1700 PDT Saturday: 0900 PDT - 1500 PDT Sunday: 0900 PDT - 1500 PDT	Misty Gutierrez (S) Phone: 916-516-6207	
Shasta County LAC , 1890 Briggs Street , Anderson , CA 96007 USNG: 10T EK 58639 78274	Monday: 1000 PDT - 1900 PDT Tuesday: 1000 PDT - 1900 PDT Wednesday: 1000 PDT - 1900 PDT Thursday: 1000 PDT - 1900 PDT Friday: 1000 PDT - 1900 PDT Saturday: 1000 PDT - 1900 PDT Sunday: 1000 PDT - 1900 PDT	Rich Martinez (S) Phone: 916-628-4411	
CALOES NEWS DESK ,		Phone: 916-800-3943	
FEMA NEWS DESK ,		Phone: 916-718-8540	

Command

Position	S t r a i t b e e	F E M A	O F A	Name	Phone	Work Email
State Coordinating Officer	X			Ryan Buras	916-879-6838	Ryan.Buras@CalOES.ca.gov
Federal Coordinating Officer		X		Willie Nunn	206-437-4403	Willie.Nunn@fema.dhs.gov
Deputy Federal Coordinating Officer		X		Teresa Serata	202-384-6373	teresa.serata@fema.dhs.gov
State Disaster Recover Coordinator	X			Robert Troy	916-328-7581	Robert.Troy@CalOES.ca.gov
Acting Coastal Regional Administrator	X			Lee Dorey	916-203-9175	Lee.Dorey@CalOES.ca.gov
Acting Southern Regional Administrator	X			Jim Acosta	714-795-1271	Jim.Acosta@CalOES.ca.gov
Inland Regional Administrator	X			Tom Graham	916-823-7360	Thomas.Graham@CalOES.ca.gov

Interagency Recovery Coordination

Position	S t r a i t b e e	F E M A	O F A	Name	Phone	Work Email
IRC Branch Director	X			Derek Lambeth	916-628-4407	Derek.Lambeth@CalOES.ca.gov
Deputy IRC Branch Director	X			Georges Merceron	916-328-7486	ContractorGeorges.Merceron@CalOES.ca.gov
RSF Support	X			Tony Lacy	916-718-2286	Tony.Lacy@CalOES.ca.gov
RSF Support	X			Stephanie Wallace	916-947-4960	Stephanie.Wallace@CalOES.ca.gov
RSF Coordinator - Health and Social Services (HSS)	X			Melissa Smith	916-328-7471	Melissa.Smith@CalOES.ca.gov
RSF Coordinator - Economic	X			Melissa Hernandez	916-439-9706	Melissa.Hernandez@CalOES.ca.gov

RSF Coordinator - Community Planning and Capacity Building	X			Megan Walton	916-636-3704	Megan.Walton@CalOES.ca.gov
RSF Coordinator - Housing	X			Robyn Cole	916767-2881	Robyn.Cole@CalOES.ca.gov
RSF Coordinator - Infrastructure Systems	X			Eric Salemo	916-767-2879	Eric.Salemo@CalOES.ca.gov
RSF Coordinator - Natural and Cultural Resources (NCR)	X			Patricia Nelson	916-823-1945	Patricia.Nelson@CalOES.ca.gov

Command Staff

Position	S T r a i b l e	F E M A	O F A	Name	Phone	Work Email
Chief of Staff	X			Dena Wilson	916-704-8791	Dena.Wilson@CalOES.ca.gov
Chief of Staff (JFO)		X		Julie Tsen	202-480-1156	julie.tsen@fema.dhs.gov
Deputy Chief of Staff	X			Carlene Croisdale	916-539-7303	Carlene.Croisdale@CalOES.ca.gov
Safety Officer (Lead)		X		Wayne Baskin	202-826-5959	wayne.baskin@fema.dhs.gov
Safety Officer (JFO)		X		Tuan Ngo	202-717-1471	tuan.q.ngo@fema.dhs.gov
Safety Officer (JFO)		X		Michael Simpson	256-454-6448	michael.simpson@fema.dhs.gov
Legal Advisor	X			Joy Peng	916-845-8971	Joy.Peng@CalOES.ca.gov
Legal Advisor (Remote)		X		Robert Ayres	202-674-6721	robert.ayres@fema.dhs.gov
Executive Assistant (JFO)		X		Danice Wolfe	202-826-3175	danice.wolfe@fema.dhs.gov
Assistant to the FCO		X		Andrew Grant	202-257-5303	andrew.grant@fema.dhs.gov
Administrative Support / Correspondence	X			Makeda Johnson	916-664-2552	Makeda.Johnson@CalOES.ca.gov
Civil Rights Advisor (Remote)		X		James E. Parker	540-431-9579	jamese.parker@fema.dhs.gov
Public Information Officer	X			Jim Kyle	916-591-7593	Jim.Kyle@CalOES.ca.gov
Public Information Officer	X			Alyson Hanner	926-616-1401	Alyson.Hanner@CalOES.ca.gov
External Affairs Officer (JFO)		X		Ricardo X. (Zuni) Zuniga	571-431-8403	ricardo.zuniga@fema.dhs.gov
External Affairs Intergovernmental/Congressional Affairs Manager (JFO)		X		Stewart Anderson	609-508-2394	stewart.anderson@fema.dhs.gov
Legislative and External Affairs	X			Mandi Strella	916-845-8403	Mandi.Strella@CalOES.ca.gov
SBA PIO			X	Kevin Wynne	916-847-2638	kevin.wynne@sba.gov
Tribal Affairs Liaison - DO	X			Pamela Joe	916-628-7572	TribalAffairs@CalOES.ca.gov
Tribal Affairs Liaison (Remote)		X		Christopher Poehlmann	510-627-7285	Christopher.Poehlmann@fema.dhs.gov
Tribal Affairs Coordinator	X			James Griffith	916-825-7088	TribalAffairs@CalOES.ca.gov
Environmental & Historic Preservation Advisor	X			Patricia Nelson	916-823-1945	Patricia.Nelson@CalOES.ca.gov
Environmental & Historic Preservation Advisor (JFO)		X		Emily Benz	940-218-0883	emily.j.benz@fema.dhs.gov

Access and Functional Needs - Remote	X			Vance Taylor	916-205-1630	Vance.Taylor@CalOES.ca.gov
Disability Integration Advisor (JFO)		X		Eve Salstrom	347-626-9554	Eve.salstrom@fema.dhs.gov
Security Manager (AWS EOC Sonoma Co.)		X		David Fritchie	202-701-5025	david.fritchie@fema.dhs.gov
Security Officer (JFO)		X		Sid Mitchell	256-454-3092	sidney.mitchell@fema.dhs.gov
Peer Support	X			Nikole Schutz	916-709-0434	CovidPeerSupport@SOC.CalOES.ca.gov

Operations

Position	S T R A I T B E E	F E M A	O F A	Name	Phone	Work Email
Operations Section Chief	X			Eli Owen	916-214-4132	Eli.Owen@CalOES.ca.gov
Operations Section Chief		X		Jay Denton Gildea	202-320-7179	janston.dentongildea@fema.dhs.gov
Deputy Operations Section Chief	X			Kim Bowman	916-539-5613	ContractorKim.Bowman@CalOES.ca.gov
Deputy Operations Section Chief (JFO)		X		A D Hill III	626-862-1599	arlie.hill@fema.dhs.gov
Geo Ops Planner (Remote)		X		Mark V. Cerney	202-878-2115	mark.cerney@fema.dhs.gov
Operations Advisor	X			John Catching	916-265-8205	John.Catching@CalOES.ca.gov
Operations Specialist	X			Ryan Christen	916-616-7840	ContractorRyan.Christen@CalOES.ca.gov
Mission Assignment Manager (Remote)		X		DeLane Garner	202-717-0926	delane.garner@fema.dhs.gov
Mission Resource Tasking	X			Emi Churchill	916-202-0712	Emi.Churchill@Caloes.ca.gov
Mission Resource Tracking	X			Reuben Bernaldez	916-813-5094	Reuben.Bernaldez@CalOES.ca.gov
Infrastructure Branch Director	X			Vanessa Vaughn	916-926-9859	Vanessa.Vaughn@CalOES.ca.gov
Operations Branch Director- Critical Infrastructure (JFO)		X		Matt Davis	202-718-3340	matthew.davis@fema.dhs.gov
ESF-1 Caltrans	X			Steve Marker	916-208-2349	SOC@DOT.ca.gov
ESF-2 Communications / DO	X			Shelly McMahon	916-952-9440	EF2@CalOES.ca.gov
ESF-2 Communications - Remote	X			Beth Abdallah	916-952-9449	EF2@CalOES.ca.gov
ESF 2 CISA ECD			X	Artena Moon	916-200-9862	artena.moon@cisa.dhs.gov
ESF - 3 Public Works/Engineering			X	Amy Aton	415-286-6089	amy.t.aton@usace.army.mil
ESF - 3 Public Works/Engineering			X	Jessica Fischer	916-807-0028	jessica.d.fischer@usace.army.mil
ESF-4 OES Fire	X			AC Jack Fry	916-628-7015	Jack.Fry@CalOES.ca.gov
ESF-4 Cal Fire	X			Chris Van Cor	916-636-3751	Chris.VanCor@Fire.ca.gov
ESF-4 Cal Fire	X			Gianni Muschetto	916-636-3751	Gianni.Muschetto@Fire.ca.gov
ESF 04 Firefighting			X	Tim Dunfee	760-920-7515	timothy.dunfee @usda.gov
ESF 06 Mass Care			X	Luke Beckman	650-740-5853	luke.beckman@redcross.org

ESF 06 Mass Care			X	Denise Everhart	503-936-3263	denise.everhart@redcross.org
ESF 06 Housing and Urban Development (HUD)			X	Ed Ellis	940-453-2861	edward.d.ellis@hud.gov
ESF-8 Health and Medical			X	CAPT Jane Kreis	510-301-2516	Jane.Kreis@fda.hhs.gov
ESF-10 Cal EPA - Remote	X			Jason Boetzer	916-715-3005	Jason.Boetzer@CalEPA.ca.gov
ESF-10 Cal EPA - Remote	X			Kristi Placencia	916-601-7845	Kristi.Placencia@CalEPA.ca.gov
ESF 10 Hazardous Materials			X	Bill Jones	619-806-6737	jones.bill@epa.gov
ESF-11 CDFA - Remote	X			Asha Raj	916-216-1913	Asha.Raj@CDFA.ca.gov
ESF - 11 Agriculture			X	Todd Smith	970-631-3279	todd.l.smith@usda.gov
ESF-12 CUEA - Remote	X			Don Boland	916-717-7570	Don.Boland@CalOES.ca.gov
ESF-12 CUEA - Remote	X			Jenny Regino	916-709-6708	Jenny.Regino@CalOES.ca.gov
ESF-12 PG&E Representative			X	Jeffrey Briggs	209-996-8186	Jeffrey.Briggs@PGE.com
ESF-13 OES Law	X			Deputy Chief Gary Yandell	916-767-8793	Gary.Yandell@CalOES.ca.gov
ESF-13 OES Law - LEOC/Field	X			AC Celeste Fowler	559-284-2203	Celeste.Fowler@CalOES.ca.gov
ESF-13 OES Law - LEOC	X			AC Sheldon Fung	916-798-5311	Sheldon.Fung@CalOES.ca.gov
ESF-13 OES Law - LEOC	X			AC Tom Anzelmo	916-531-9484	Tom.Anzelmo@CalOES.ca.gov
ESF-13 OES Law - LEOC	X			AC Steve Schory	(916) 809-6185	Steve.Schory@CalOES.ca.gov
ESF-13 OES Law - Glass/Boysen Fire	X			AC Jim Linn	510-725-5085	Jim.Linn@CalOES.ca.gov
ESF-13 OES Law - Creek Fire	X			AC Jared McCormick	916-531-2711	Jared.McCormick@CalOES.ca.gov
ESF-13 OES Law - Slater/Zogg Fires	X			AC Ron Quigley	530-526-0922	Ron.Quigley@CalOES.ca.gov
ESF-13 OES Law - Shady Fire	X			AC Greg Smith	510-207-8976	Greg.Smith@CalOES.ca.gov
Public Assistance Branch Director	X			Robbie Larsen	916-600-3126	Robert.Larsen@CalOES.ca.gov
Public Assistance Branch Director (Remote)		X		John Christensen	510-520-1345	John.Christensen2@fema.dhs.gov
Public Assistance Task Force Lead - Branch IV	X			Nicholas Vaquero	916-531-5906	Nicholas.Vaquero@CalOES.ca.gov
Program Delivery Manager (PDMG) - Branch I	X			Scott Wagner	916-823-2260	Scott.Wagner@CalOES.ca.gov
Program Delivery Manager (PDMG) - Branch II	X			Derick Earl	916-767-2724	Derick.Earl@CalOES.ca.gov
Program Delivery Manager (PDMG) - Branch III	X			Simon Pissi	916-823-2932	Simon.Pissi@CalOES.ca.gov
Program Delivery Manager (PDMG) - Branch IV	X			Clyde Muraoka	562-795-2925	Clyde.Muraoka@CalOES.ca.gov
Hazard Mitigation Branch Director	X			Jason Williams	916-206-2116	Jason.Williams@CalOES.ca.gov
Hazard Mitigation Branch Director (JFO)		X		Diane Earl	732-208-6261	diane.earl@fema.dhs.gov
Deputy Hazard Mitigation Branch Director	X			Justin Barnes	541-591-1494	ContractorJustin.Barnes@CalOES.ca.gov
Hazard Mitigation Staff	X			Noah Aiona	916-516-6164	Noah.Aiona@CalOES.ca.gov

Hazard Mitigation Staff	X			Esteban Hollister	916-661-0339	Esteban.Hollister@CalOES.ca.gov
Hazard Mitigation Staff	X			Lorin Sabin	916-539-9480	Lorin.Sabin@CalOES.ca.gov
Hazard Mitigation Staff	X			James Cota	916-224-8452	James.Cota@CalOES.ca.gov
Hazard Mitigation Staff	X			Jan Stout	916-823-6643	Jan.Stout@CalOES.ca.gov
Hazard Mitigation Staff	X			Karen McCready	916-216-1751	Karen.McCready-Hoover@CalOES.ca.gov
Disaster Survivor Assistance Branch Director (JFO AWS)		X		Julius Gibbons	202-805-6325	Julius.Gibbons@fema.dhs.gov
Disaster Survivor Assistance Deputy Branch Director (JFO AWS)		X		Lucy Baker	940-231-8682	luzvary.baker@fema.dhs.gov
Disaster Survivor Assistance Group Supervisor (JFO AWS)		X		Kenneth Smith	202-805-6314	kennethl.smith@fema.dhs.gov
Disaster Survivor Assistance Group Supervisor (JFO AWS)		X		Diann Easterling	202-714-7278	judith.easterling@fema.dhs.gov
DSA Task Force Leader (LAC/MRIC #4)		X		Cindy Shepherd	609-534-3094	cindy.shepherd@fema.dhs.gov
DSA Crew Leader 1 (LAC/MRIC #4)		X		Jadzia Taylor	202-706-4454	jadzia.taylor@fema.dhs.gov
DSA Crew Leader 3 (JFO AWS)		X		Brandon Perez Rivera	202-701-4535	brandon.perezrivera@fema.dhs.gov
DSA Crew Leader 4 (LAC/MRIC #4)		X		Kayla Rahimi	202-664-7107	kayla.rahimi@fema.dhs.gov
DSA Crew Leader 5 (JFO AWS)		X		Mary Czaplinski	609-575-1449	mary.czaplinski@fema.dhs.gov
DSA Crew Leader 7 (AWS EOC Santa Cruz Co)		X		Laura Perry	202-368-5592	LAURA.PERRY@FEMA.DHS.GOV
DSA Crew Leader 9 (LAC/MRIC #4)		X		Sedarick Turner	202-705-7431	sedarick.turner@fema.dhs.gov
Individual Assistance Branch Director	X			Emilie Hill	916-823-1081	Emilie.Hill@CalOES.ca.gov
Individual Assistance Branch Director (JFO)		X		Jesus Ceja	202-805-6724	Jesus.Ceja@fema.dhs.gov
Deputy Individual Assistance Branch Director - Branch I & II	X			Katrina Palomar	916-494-8138	Katrina.Palomar@CalOES.ca.gov
Deputy Individual Assistance Branch Director - Branch III & IV	X			Nicole Benson	916-767-2954	Nicole.Benson@CalOES.ca.gov
Deputy Individual Assistance Branch Director (JFO)		X		Shahdy Monemzadeh	202-230-7389	shahdy.monemzadeh@fema.dhs.gov
Deputy Individual Assistance Branch Director (JFO)		X		Magda De La Matta	510-332-5182	magda.de-la-matta@fema.dhs.gov
Deputy Individual Assistance Branch Director (JFO)		X		Michael Cosbar	703-254-9734	michael.cosbar@fema.dhs.gov
SBA Office in Charge			X	Michael Brown	916-216-9792	michael.brown@SBA.gov
Disaster Recovery Center (MRIC) Group Supervisor (JFO)		X		Stephanie Nash	202-550-5964	Stephanie.Nash@fema.dhs.gov
Individual Assistance Group Supervisor (JFO)		X		Tina Rafferty	202-805-8531	Tina.Rafferty@fema.dhs.gov
Individual Assistance LAC/MRIC Coordinator	X			Summer Wright	916-715-3558	Summer.Wright@CalOES.ca.gov
Individual Assistance LAC/MRIC Coordinator	X			Brad Harrelson	916-531-3793	ContractorBrad.Harrelson@CalOES.ca.gov
Individual Assistance Support	X			Becca Berggren	916-340-5893	Becca.Berggren@CalOES.ca.gov
Individual Assistance Support	X			Tiffany Facino	916-926-9851	Tiffany.Facino@caloes.ca.gov
Individual Assistance Support	X			Veronica Silva	916-879-5186	Veronica.Silva@CalOES.ca.gov

Recovery Analyst	X		Jacob Fraker	916-612-7133	Jacob.Fraker@CalOES.ca.gov
MRIC Task Force Leader (LAC/MRIC #1)		X	Ahmad Page	202-550-7616	ahmad.page@fema.dhs.gov
LAC Liaison - Napa County	X		Adriane Ceballos	916-823-6474	Adriane.Ceballos@CalOES.ca.gov
LAC Liaison - Tulare County	X		Misty Gutierrez	916-516-6207	Misty.Gutierrez@CalOES.ca.gov
LAC Liaison - Shasta County	X		Rich Martinez	916-628-4411	Richard.Martinez@CalOES.ca.gov
MRIC #4 Manager - Santa Cruz County		X	Linda Durall	202-809-1690	linda.durall@fema.dhs.gov
MRIC #9 Manager - Butte County		X	Tony Faison	202-531-0458	tony.faison@fema.dhs.gov
Voluntary Agency Liaison (VAL) Group Supervisor (JFO)		X	Colleen Zaremba	510-424-1426	colleen.zaremba@fema.dhs.gov
Information Management (IM) Group Supervisor (Remote)		X	Karen Reichensperger	218-365-7462	karen.reichensperger@fema.dhs.gov
Task Force Lead	X		Bill Simonson	916-539-0333	Bill.Simonson@CalOES.ca.gov
Debris Task Force - Lead	X		Robbie Larsen	916-600-3126	Robert.Larsen@CalOES.ca.gov
Debris Task Force - Lead / Bay Branch Debris Ops Branch Director	X		Kendra Bowyer	916-214-2043	Kendra.Bowyer@CalOES.ca.gov
Santa Cruz County Liaison	X		Byron Green	916-330-0933	Byron.Green@CalOES.ca.gov
San Mateo County Liaison	X		Gabe Kearney	916-926-9542	Gabe.Kearney@CalOES.ca.gov
Monterey County Liaison	X		Kelly Riley	916-500-2544	Kelly.Riley@CalOES.ca.gov
Santa Clara County Liaison	X		Brian Buckhout	916-628-5897	Brian.Buckhout@CalOES.ca.gov
Debris Task Force - Lead / Northern Branch Debris Ops Branch Director	X		Cole Glenwright	916-425-0302	Cole.Glenwright@CalOES.ca.gov
Butte County Liaison	X		Rod Daugherty	916-612-4242	Rod.Daugherty@CalOES.ca.gov
Plumas / Yuba County Liaison	X		Lindsey Stanley	916-995-9372	Lindsey.Stanley@CalOES.ca.gov
Nevada County Liaison	X		Sarah Murdock	916-661-0329	Sarah.Murdock@CalOES.ca.gov
Siskiyou County Liaison	X		Robert Goyeneche	916-694-9906	Robert.Goyeneche@CalOES.ca.gov
Mendocino County Liaison	X		Garrett Thomsen	916-206-1470	Garrett.Thomsen@CalOES.ca.gov
Inland Branch Debris Ops Branch Director	X		John Melendez	916-601-2649	John.Melendez@CalOES.ca.gov
Solano County Liaison	X		Jennifer Gordon	916-698-1470	Jennifer.Gordon@CalOES.ca.gov
Napa County Liaison	X		Memoree McIntire	510-220-0185	Memoree.McIntire@CalOES.ca.gov
Sonoma County Liaison	X		Sarah Finnigan	707-330-6240	Sarah.Finnigan@CalOES.ca.gov
Lake County Liaison	X		Garrett Thomsen	916-206-1470	Garrett.Thomsen@CalOES.ca.gov
Yolo County Liaison	X		Kyle Noderer	916-709-5492	Kyle.Noderer@CalOES.ca.gov
Southern Branch Debris Ops Branch Director	X		Elise Arata	916-628-0371	Elise.Arata@CalOES.ca.gov
Fresno County Liaison	X		Walt Kent	916-396-9292	Walt.Kent@CalOES.ca.gov
Los Angeles County Liaison	X		TBD	TBD	TBD
Madera County Liaison	X		Walt Kent	916-396-9292	Walt.Kent@CalOES.ca.gov

FOR OFFICIAL USE ONLY

San Bernardino County Liaison	X			TBD	TBD	TBD
San Diego County Liaison	X			TBD	TBD	TBD
Tulare County Liaison	X			Patti Tran	916-709-3497	Patti.Tran@CalOES.ca.gov
Debris Task Force (Remote)		X		Joseph Grunditz	202-924-7061	joseph.grunditz@fema.dhs.gov
Watershed/Debris Flow Task Force	X			Jennifer Hogan	916-833-6164	Jennifer.Hogan@CalOES.ca.gov
Watershed/Debris Flow Task Force (Remote)		X		Eric Simmons	510-928-5531	eric.simmons@fema.dhs.gov
Watershed/Debris Flow TF - Co-Lead	X			Jason Spotts	916-845-8244	Jason.Spotts@CalOES.ca.gov
Housing Task Force Lead	X			Katrina Palomar	916-494-8138	Katrina.Palomar@CalOES.ca.gov
Housing Task Force (JFO)		X		Tina Rafferty	202-805-8531	tina.rafferty@fema.dhs.gov
Deputy Housing Task Force Lead	X			Leah Lanier	916-823-1081	ContractorLeah.Lanier@CalOES.ca.gov
Housing Task Force Support	X			Kristie Stevens	916-539-3996	ContractorKristie.Stevens@CalOES.ca.gov
Mass Care and Shelter Task Force Lead (JFO)		X		Bea Riddle	225-910-5156	bea.riddle@fema.dhs.gov
Mass Care and Shelter Task Force Lead	X			Brian Lussier	916-869-8890	Brian.Lussier@DSS.ca.gov
Mass Care and Shelter Task Force - Remote	X			JR Antablian	916-247-1361	George.Antablian@DSS.ca.gov
Mass Care and Shelter Task Force	X			Jennifer Dulay	916-200-8640	Jennifer.Dulay@DSS.ca.gov
Mass Care and Shelter Task Force	X			Alex Shariatmadari	916-247-6403	Alex.Shariatmadari@DSS.ca.gov
Mass Care and Shelter Task Force - Remote	X			Jeremey Horan	916-206-1907	Jeremey.Horan@CalOES.ca.gov
Mass Care and Shelter Task Force - Remote	X			Kenneth Wong	916-605-6497	Kenneth.Wong@DGS.ca.gov
Mass Care and Shelter Task Force - Duty Officer	X			Adriana Flores	916-869-8890	Adriana.Flores@DSS.ca.gov
Mass Care and Shelter Task Force - Remote	X			Janice Winston	215-806-0300	Janice.Winston@RedCross.org
Operations Branch Director - Mass Care (JFO)		X		Laura Pickens	202-465-0327	laura.pickens@fema.dhs.gov
Mass Care and Sheltering Group Supervisor (JFO AWS)		X		Jaime Brown	202-215-0307	jaime.brown@fema.dhs.gov
Schools Task Force Lead	X			Lynne Olson	916-919-3016	Lynne.Olson@CalOES
Schools Task Force Lead	X			Lisa Constancio	TBD	LConstancio@CDE.ca.gov
Schools Task Force - CDE	X			Juan Mireles	916-445-2144	JMireles@CDE.ca.gov
Schools Task Force - CDE	X			Lesley Taylor	916-806-1130	LTaylor@CDE.ca.gov
CCC Representative - Remote	X			Ray Garcia	916-599-1415	Emergency.Services@CCC.ca.gov
CCC Representative - Remote	X			Michaela Hayden	916-599-1415	Emergency.Services@CCC.ca.gov
CNG Representative (0700 - 1400)	X			LTC Steve Cassagrande	916-636-3724	CMDSOCLNO@Gmail.com
CNG Representative (1400-1900) (Fri)	X			MAJ Larry Musso	916-636-3724	CMDSOCLNO@Gmail.com
CNG Representative (1400-1900) (Sat)	X			Ralph Cansimbe	916-636-3724	CMDSOCLNO@Gmail.com
Northern Branch I Director	X			Cole Glenwright	916-425-0302	Cole.Glenwright@CalOES.ca.gov
Northern Branch I Director (JFO AWS)		X		Tex Burns	404-695-1614	therron.burns@fema.dhs.gov

FOR OFFICIAL USE ONLY

Deputy Northern Branch I Director	X		Baylor Cartica	916-926-1477	Baylor.Cartica@CalOES.ca.gov
Deputy Northern Branch I Director	X		Amber Lane	916-824-6355	Amber.Lane@CalOES.ca.gov
Yuba County Division	X		Lindsey Stanley	916-995-9372	Lindsey.Stanley@CalOES.ca.gov
Yuba County Division (EOC Butte Co.)		X	Dennis Orbus	202-716-9811	dennis.orbus@fema.dhs.gov
Mendocino County Division	X		Garrett Thomsen	916-206-1470	Garrett.Thomsen@CalOES.ca.gov
Nevada County Division	X		Walt Kent	916-396-9292	Walt.Kent@CalOES.ca.gov
Nevada County Division (EOC Butte Co.)		X	Dennis Orbus	202-716-9811	dennis.orbus@fema.dhs.gov
Butte County Division	X		Rod Daugherty	916-612-4242	Rod.Daugherty@CalOES.ca.gov
Butte County Division (EOC Sonoma Co.)		X	Rita Bazazzadeh	202-316-7842	rita.bazazzadeh@fema.dhs.gov
Plumas County Division	X		Lindsey Stanley	916-995-9372	Lindsey.Stanley@CalOES.ca.gov
Plumas County Division (EOC Sonoma Co.)		X	Rita Bazazzadeh	202-316-7842	rita.bazazzadeh@fema.dhs.gov
Siskiyou County Division	X		Robert Goyeneche	916-694-9906	Robert.Goyeneche@CalOES.ca.gov
Siskiyou County Division (Yreka, CA AWS)		X	Jack Smith	202-705-9181	jack.smith1@fema.dhs.gov
Inland Branch II Director	X		John Melendez	916-601-2649	John.Melendez@CalOES.ca.gov
Inland Branch II Director (EOC Napa Co. AWS)		X	Jon Bajon	609-752-9843	jon.bajon@fema.dhs.gov
Deputy Inland Branch II Director	X		Sean Rose	916-384-6419	Sean.Rose@CalOES.ca.gov
Lake County Division	X		Garrett Thomsen	916-206-1470	Garrett.Thomsen@CalOES.ca.gov
Lake County Division (EOC Napa Co. AWS)		X	Jon Bajon	609-752-9843	jon.bajon@fema.dhs.gov
Solano County Division	X		Jennifer Gordon	916-698-1470	Jennifer.Gordon@CalOES.ca.gov
Solano County Division (EOC Sonoma Co.)		X	Terrence Williamson	256-454-6461	terrence.williamson@fema.dhs.gov
Yolo County Division	X		Kyle Noderer	916-709-5492	Kyle.Noderer@CalOES.ca.gov
Yolo County Division (EOC Sonoma Co.)		X	Terrence Williamson	256-454-6461	terrence.williamson@fema.dhs.gov
Napa County Division	X		Memoree McIntire	510-220-0185	Memoree.McIntire@CalOES.ca.gov
Napa County Division (EOC Napa Co. AWS)		X	Jon Bajon	609-752-9843	Jon.Bajon@fema.dhs.gov
Sonoma County Division	X		Sarah Finnigan	707-330-6240	Sarah.Finnigan@CalOES.ca.gov
Sonoma County Division		X	Terrence Williamson	256-454-6461	terrence.williamson@fema.dhs.gov
Bay Branch III Director	X		Kendra Bowyer	916-214-2043	Kendra.Bowyer@CalOES.ca.gov
Bay Branch III Director (EOC Santa Cruz Co.)		X	Fred Wehrenburg	510-316-7636	fred.wehrenburg@fema.dhs.gov
Deputy Branch Director (EOC Santa Cruz Co.)		X	Will Alexander	202-322-3280	will.alexander@fema.dhs.gov
Santa Cruz County Division	X		Byron Green	916-330-0933	Byron.Green@CalOES.ca.gov
Santa Cruz County Division		X	Fred Wehrenburg	510-316-7636	fred.wehrenburg@fema.dhs.gov
San Mateo County Division	X		Gabe Kearney	916-926-952	Gabe.Kearney@CalOES.ca.gov

San Mateo County Division		X		Brian Cox	202-689-7842	brianj.cox@fema.dhs.gov
Monterey County Division	X			Kelly Riley	916-500-2544	Kelly.Riley@CalOES.ca.gov
Monterey County Division (EOC Santa Cruz Co.)		X		Fred Wehrenburg	510-316-7636	fred.wehrenburg@fema.dhs.gov
Santa Clara County Division	X			Brian Buckhout	916-628-5897	Brian.Buckhout@CalOES.ca.gov
Santa Clara County Division		X		Darrell Burton	510-421-8790	darrell.burton@fema.dhs.gov
Southern Branch IV Director	X			Elise Arata	916-628-0371	Elise.Arata@CalOES.ca.gov
Southern Branch IV Director (JFO AWS)		X		Dave Winterle	202-368-1604	david.winterle@fema.dhs.gov
Deputy Southern Branch IV Director	X			Mike Grasso	916-612-3018	Mike.Grasso@CalOES.ca.gov
San Bernardino County Division		X		TBD	TBD	TBD
San Diego County Division		X		TBD	TBD	TBD
Tulare County Division		X		Patti Tran	916-709-3497	Patti.Tran@CalOES.ca.gov
Los Angeles County Division		X		TBD	TBD	TBD
Madera County Division (EOC Fresno Co.)		X		Glenn Irish	202-701-8931	glenn.irish@fema.dhs.gov
Fresno County Division	X			Walt Kent	916-396-9292	Walt.Kent@CalOES.ca.gov
Fresno County Division (EOC Fresno Co.)		X		Glenn Irish	202-701-8931	glenn.irish@fema.dhs.gov
CalOES Operations Inbox	X			N/A	N/A	jfooperations@caloeseoc.onmicrosoft.com

Logistics

Position	S T r a i b e e	F E M A	O F A	Name	Phone	Work Email
Logistics Section Chief	X			Chris Hacker	916-261-4541	Chris.Hacker@CalOES.ca.gov
Logistics Section Chief (JFO)		X		Carol McKinney	202-809-3750	carol.mckinney@fema.dhs.gov
Deputy Logistics Section Chief	X			Dave Grumney	916-247-6393	ContractorDave.Grumney@CalOES.ca.gov
Support Branch Director	X			Ryan Sutliff	916-207-5941	Ryan.Sutliff@CalOES.ca.gov
Support Branch Director (JFO)		X		Paul Bauer	510-289-2122	paul.bauer@fema.dhs.gov
Procurement - DGS	X			TBD	TBD	TBD
Facilities Unit Lead	X			Rueben Armenta	916-823-6503	Rueben.Armenta@CalOES.ca.gov
Facilities Unit Leader (JFO)		X		Holli Griffiths	202-718-1156	holli.l.griffiths@fema.dhs.gov
Administrative Support	X			Aman Thiara	916-694-7146	Aman.Thiara@CalOES.ca.gov
Logistics Support - Chico State Housing	X			John Casillas	916-926-1371	John.Casillas@CalOES.ca.gov
Service Branch Director	X			Doug Sabin	916-200-9801	Doug.Sabin@CalOES.ca.gov
Service Branch Director (JFO)		X		Robert Drew	202-716-7431	robert.drew@fema.dhs.gov
Communications Unit Leader (JFO)		X		David Mascitelli	202-714-6750	David.Mascitelli@fema.dhs.gov
Client Support (IT)	X			Jeremy Man	916-832-6998	Jeremy.Man@CalOES.ca.gov

Client Support (IT)	X			Brendon Vongkhamphanh	916-879-4598	Brendon.Vongkhamphanh@CalOES.ca.gov
Accountable Property Manager (JFO)		X		Richard Piedrahita	540-431-7490	richard.piedrahita@fema.dhs.gov
External Branch Director (JFO)		X		Kawai Ko	510-332-1708	kawai.ko@fema.dhs.gov
Ordering Inbox		X		N/A	N/A	fema-dr4558-ordering@fema.dhs.gov

Planning

Position	S T r i b l e	F E M A	O F A	Name	Phone	Work Email
Planning Section Chief	X			Nicole Erlichman	916-291-7264	Nicole.Erlichman@CalOES.ca.gov
Planning Section Chief		X		Anthony Trimble	202-445-5104	anthony.trimble@fema.dhs.gov
Deputy Planning Section Chief	X			Nikko Quiggins	916-926-1093	ContractorNikko.Quiggins@CalOES.ca.gov
Deputy Planning Section Chief (Remote)		X		Tara Moore	202-705-9858	tara.moore1@fema.dhs.gov
Situation Unit Lead	X			Monica Williams	916-516-3386	Monica.Willams@CalOES.ca.gov
Situation Unit Leader (Remote)		X		Arlett Carmona	202-812-6699	arlett.carmona@fema.dhs.gov
Situation Unit Support	X			Jessica London	916-539-6960	ContractorJessica.London@CalOES.ca.gov
Documentation Unit Leader (Remote)		X		Tara Moore	202-705-9858	tara.moore1@fema.dhs.gov
Planning Support Unit Lead	X			Gina Avelar	951-850-4799	Gina.Avelar@CalOES.ca.gov
Planning Support Unit Leader (JFO)		X		Gary Neilson	202-320-0148	gary.neilson@fema.dhs.gov
Resource Unit Leader (JFO)		X		Sade Long	202-717-1910	sade.d.long@fema.dhs.gov
GIS Unit Leader (Remote)		X		Steve Bryson	510-725-7717	stephen.bryson@fema.dhs.gov
Critical Infrastructure Protection Unit	X			Rick Burth	916-636-2919	Rick.Burth@CalOES.ca.gov
Social Media Monitoring (Fri)	X			Jaydeep Bhatia	925-457-6737	Jaydeep.Bhatia@CalOES.ca.gov
Social Media Monitoring (Sat)	X			Maddie Baldoni	916-335-8085	Maddie.Baldoni@CalOES.ca.gov
NOAA Liaison (NWS)			X	Sarah Rogowski	703-965-5370	NWS.CalOES.SOC@NOAA.gov
Cal OES Planning Inbox	X			N/A	N/A	jfoplans@caloeseoc.onmicrosoft.com
FEMA Planning Inbox		X		N/A	N/A	fema-r9-cawildfire-planning@fema.dhs.gov

Finance & Administration

Position	S T r i b l e	F E M A	O F A	Name	Phone	Work Email
Finance and Administration Section Chief	X			Desitny Saechou	916-612-3878	Destiny.Saechou@CalOES.ca.gov
Finance and Administration Section Chief (Remote)		X		John Svolos	202-702-5253	john.svolos@fema.dhs.gov
Deputy Finance and Administration Section Chief		X		Brian Rodriguez	510-388-9293	brian.rodriguez@fema.dhs.gov
Comptroller (Remote)		X		Kenneth Kersting	202-615-8739	kenneth.kersting@fema.dhs.gov
Travel Manager (JFO)		X		Patrick Scanlon	225-278-2506	patrick.scanlon@fema.dhs.gov
HR Manager (JFO)		X		Carol P Smith	202-430-4346	carol.p.smith@fema.dhs.gov
Field Support Unit Leader (JFO)		X		Cherina Griffin	202-717-6438	cherina.griffin@fema.dhs.gov

4. Prepared by: Gina Avelar, PSUL
Date/Time: 10/15/2020 1447

5. Reviewed by: Nicole Erlichman, PSC
Date/Time: 10/15/2020 1447

COMMAND ORGANIZATION CHART

1. Incident Name
2020 July/August/September
Statewide Fires

2. Date/Time Prepared
10/15/2020

3. Operational Period Date/Time
0700 10/16/2020-
0700 10/18/2020



UNIFIED COORDINATION GROUP (UCG)

State Coordinating Officer
Ryan Buras (S)
Federal Coordinating Officer
Willie Nunn (F)

**Administrative Support/
Correspondence**
Makeda Johnson (S)

State Disaster Recovery Coordinator
Robert Troy (S)
Deputy Federal Coordinating Officer
Teresa Serata (F)

Chief of Staff
Dena Wilson (S)
Julie Tsen (F)
Deputy Chief of Staff
Carlene Croisdale (S)

Safety Officer
Wayne Baskin (F)

Public Information Officer
Jim Kyle (S)
Leg & External Affairs
Mandi Strella (S)
External Affairs Officer
Crystal Payton (F)
Deputy External Affairs Officer
Ricardo Zuniga (F)
Assistant External Affairs Officer
Ken Higginbotham (F)
SBA PIO
Kevin Wynne (OFA)

AFN/DIA
Vance Taylor(S)
Eve Salstrom (F)
Legal Advisor
Joy Peng (S)
Robert Ayres (F)
Tribal Liaison
Pamela Joe (S)
Christopher Poehlmann (F) Remote
Executive Assistant
Danice Wolfe (F)

Assistant to the FCO
Andrew Grant (F)
**Environmental & Historic Preservation
Advisor**
Patricia Nelson (S)
Emily Benz (F)
Security Manager
David Fritchie (F)
Civil Rights Advisor
James E. Parker (F) Remote

Operations Section Chief
Eli Owen (S)
Jay Denton Gidea (F)
Deputy Operations Section Chief
Kim Bowman(S)
A. D. Hill III (F)

Logistics Section Chief
Chris Hacker (S)
Carol McKinney (F)
Deputy Logistics Section Chief
Dave Grumney (S)

Planning Section Chief
Nicole Erlichman (S)
Anthony Trimble (F)
Deputy Planning Section Chief
Nikko Quiggins (S)
Tara Moore (F)

Finance Section Chief
Destiny Saechou (S)
John Svols (F)
Deputy Finance Section Chief
Brian Rodriguez (F)
Comptroller
Kenneth Kersting (F)

Operations
(See Operations
Organization Chart)

Logistics
(See Logistics
Organization Chart)

Planning
(See Planning
Organization Chart)

Travel Manager
Pat Scanlon (F)

ICS-207

4. Prepared By: Gina Avelar, PSUL

5. Reviewed By: Nicole Erlichman, PSC

OPERATIONS ORGANIZATION CHART

1. Incident Name
2020 July/August/September
Statewide Fires

2. Date/Time Prepared
10/15/2020

3. Operational Period Date/Time
0700 10/16/2020-
0700 10/18/2020



Special Advisor to Operations
John Catching
Jeremy Daly

Operations Section Chief
Eli Owen (S)
Jay Denton Gildea (F)
Deputy Operations Section Chief
Kim Bowman (S)
A. D. Hill III (F)

Field Operations
(See Field Operations Organization Chart)

Task Forces
(See Task Force Organization Chart)

Operations Specialist
Ryan Christen (S)
Mission Assignment Manager
DeLane Gamer (F)
Mission Resource Tasking
Emi Churchill (S)
Reuben Bernaldez (S)
Gabby Blottie (S)

Infrastructure Branch Director
Vanessa Vaughn (S)
Matt Davis (F)

Hazard Mitigation Branch Director
Jason Williams (S)
Diane Earl (F)

Disaster Survivor Assistance Branch Director
Julius Gibbons (F)
Deputy DSA Branch Director
Kenneth Smith (F)

Interagency Recovery Coordination Branch Director
Derek Lambeth (S)
Deputy Interagency Recovery Coordination Branch Director
Georges Merceron (S)

Individual Assistance Branch Director
Emilie Hill (S)
Jesus Ceja (F)(Remote)
Deputy Individual Assistance Branch Director
Katrina Palomar (S)
Shahdy Monemzadeh (F)
Magda De La Matta (F)
Michael Cosbar (F)

Public Assistance Branch Director
Robbie Larsen (S)
John Christensen (F)

Infrastructure
(See Infrastructure Branch Organization Chart)

Infrastructure
(See Infrastructure Branch Organization Chart)

DSA
(See DSA Branch Organization Chart)

IRC
(See IRC Branch Organization Chart)

Individual Assistance
(See Individual Assistance Branch Organization Chart)

Infrastructure
(See Infrastructure Branch Organization Chart)

Pending Activation

ICS-207

4. Prepared By: Gina Avelar, PSUL

5. Reviewed By: Nicole Erlichman, PSC

FIELD OPERATIONS ORGANIZATION CHART

1. Incident Name
2020 July/August/September
Statewide Fires

2. Date/Time Prepared
10/15/2020

3. Operational Period Date/Time
0700 10/16/2020-
0700 10/18/2020



Operations Section Chief
Eli Owen (S)
Jay Denton-Gildea (F)
Deputy Operations Section Chief
Kim Bowman (S)
A. D. Hill III (F)

Geo Ops Planner
Mark Cemey (F)

Northern Branch I Director
Cole Glenwright (S)
Tex Burns (F)
Deputy Branch Director
Baylor Cartica (S)
Amber Lane (S)

Inland Branch II Director
John Melendez (S)
Jon Bajon (F)
Deputy Branch Director
Sean Rose (S)

Bay Branch III Director
Kendra Bowyer (S)
Fred Wehrenberg (F)
Deputy Bay Branch Director
Wil Alexander (F)

Southern Branch IV Director
Elise Arata (S)
Dave Winterle (F)
Deputy Branch Director
Mike Grasso (S)

Yuba County Division
Lindsey Stanley (S)
Dennis Orbus (F)

Butte County Division
Rod Daughtery (S)
Rita Bazazzadeh (F)

Lake County Division
Garet Thomsen (S)
Jon Bajon (F)

Napa County Division
Memoree McIntire (S)
Jon Bajon (F)

Santa Cruz County Division
Byron Green (S)
Fred Wehrenberg (F)

***San Bernardino County Division (5350-FM-CA)**
TBD (F)

***Los Angeles County Division (5374-FM-CA)**
TBD (F)

***Mendocino County Division**
Garrett Thomsen (S)

Plumas County Division
Lindsey Stanley (S)
Rita Bazazzadeh (F)

Solano County Division
Jennifer Gordon (S)
Terrence Williamson (F)

Sonoma County Division
Sarah Finnigan (S)
Terrence Williamson (F)

San Mateo County Division
Gabe Kearney (S)
Brian Cox (F)

***San Diego County Division (FM On Hold)**
TBD (F)

***Madera County Division (5348-FM-CA)**
Walt Kent (S)
Glenn Irish (F)

Nevada County Division
Sarah Murdock (S)
Dennis Orbus (F)

***Siskiyou County Division (5361-FM-CA)**
Robert Goyeneche (S)
Jack Smith (F)

Yolo County Division
Kyle Noderer (S)
Terrence Williamson (F)

Monterey County Division
Kely Riley (S)
Fred Wehrenberg (F)

Tulare County Division
Patti Tran (S)
TBD (F)

***Fresno County Division (5348-FM-CA)**
Walt Kent (S)
Glenn Irish (F)

Lassen County Division
TBD (S)
TBD (F)

Santa Clara County Division (5338-FM-CA)
Brian Buckhout (S)
Darrell Burton (F)

Pending Activation

ICS-207

4. Prepared By: Gina Avelar, PSUL

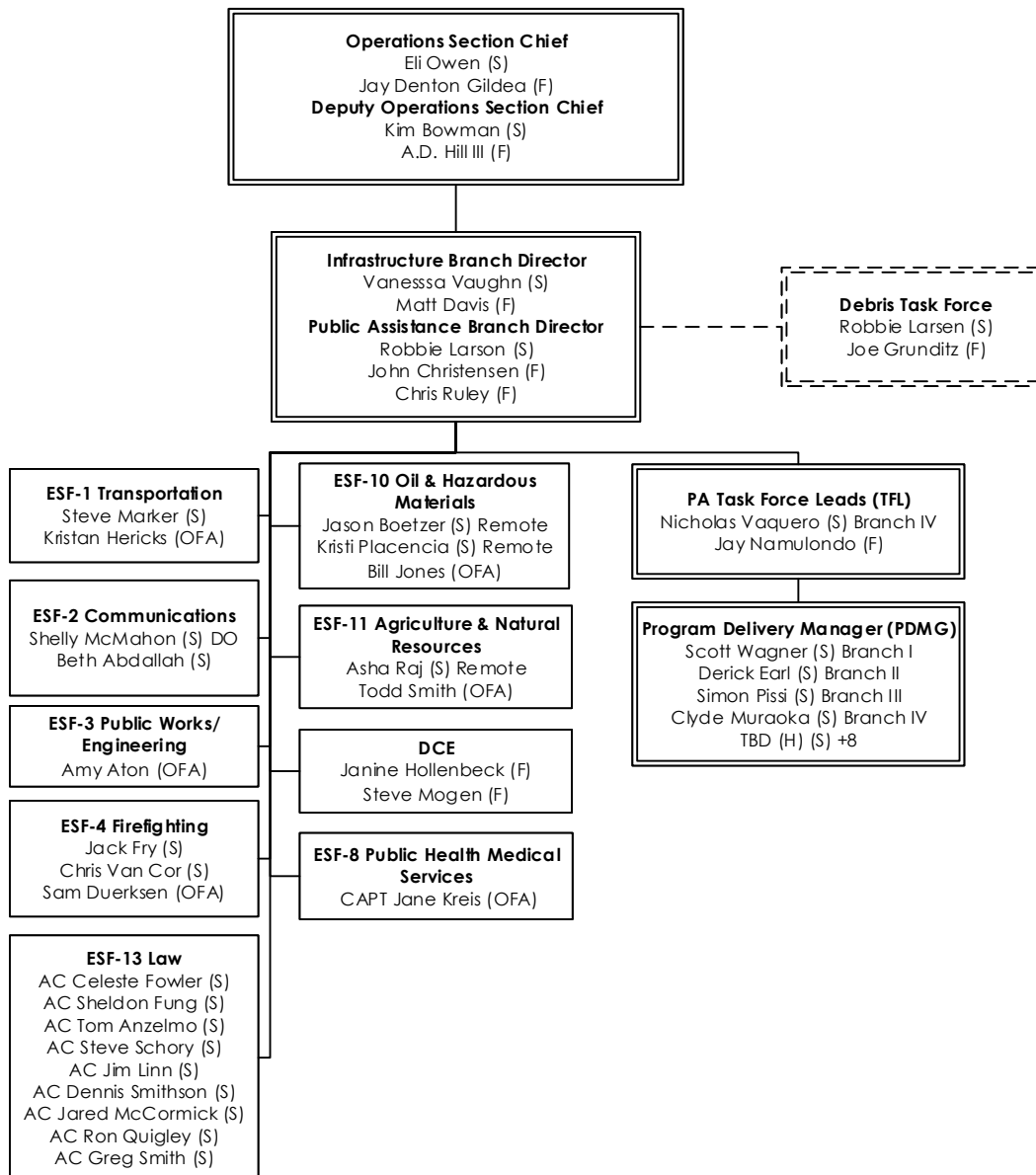
5. Reviewed By: Nicole Erlichman, PSC

Infrastructure Branch ORGANIZATION CHART

1. Incident Name
2020 July/August/September
Statewide Fires

2. Date/Time Prepared
10/15/2020

3. Operational Period Date/Time
0700 10/16/2020-
0700 10/18/2020



ICS-207

4. Prepared By: Gina Avelar, PSUL

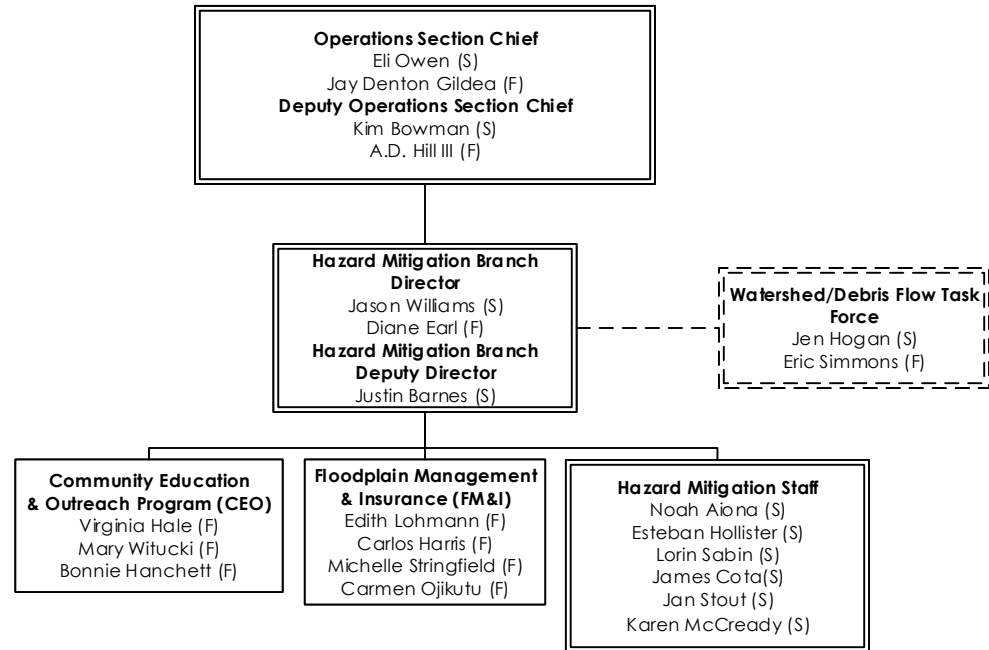
5. Reviewed By: Nicole Erlichman, PSC

Hazard Mitigation Branch ORGANIZATION CHART

1. Incident Name
2020 July/August/September
Statewide Fires

2. Date/Time Prepared
10/15/2020

3. Operational Period Date/Time
0700 10/16/2020-
0700 10/18/2020



ICS-207

4. Prepared By: Gina Avelar, PSUL

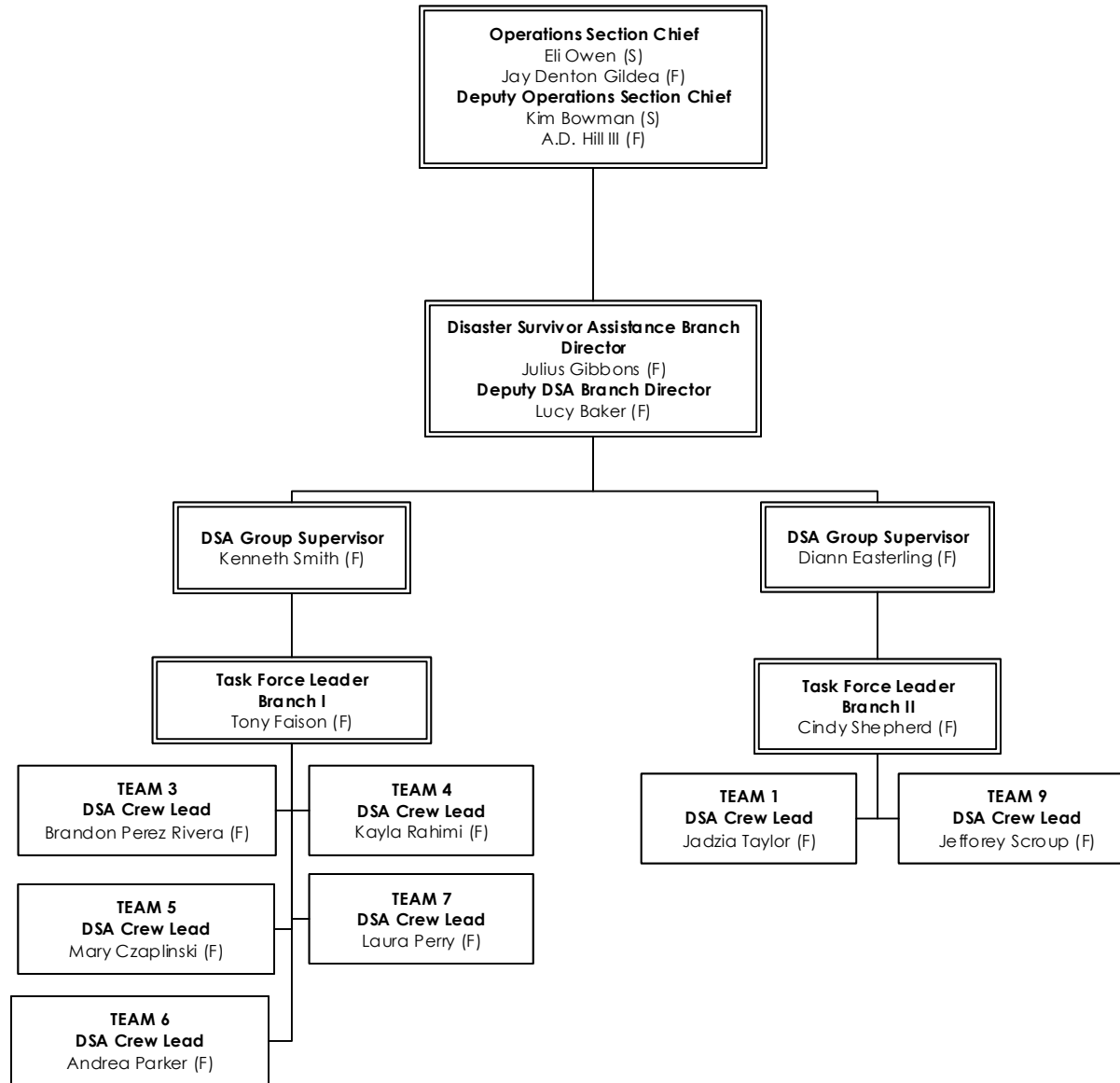
5. Reviewed By: Nicole Erlichman, PSC

DSA BRANCH ORGANIZATION CHART

1. Incident Name
2020 July/August/September
Statewide Fires

2. Date/Time Prepared
10/15/2020

3. Operational Period Date/Time
0700 10/16/2020-
0700 10/18/2020



ICS-207

4. Prepared By: Gina Avelar, PSUL

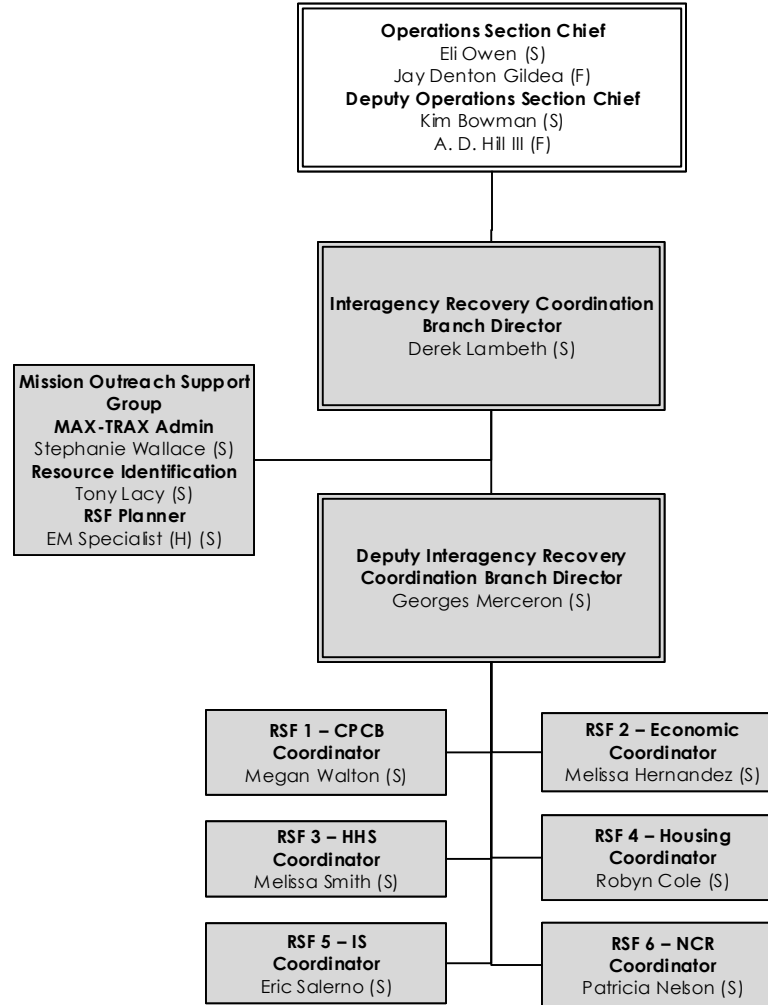
5. Reviewed By: Nicole Erlichman, PSC

IRC Branch ORGANIZATION CHART

1. Incident Name
2020 July/August/September
Statewide Fires

2. Date/Time Prepared
10/15/2020

3. Operational Period Date/Time
0700 10/16/2020-
0700 10/18/2020



 Pending Activation

ICS-207

4. Prepared By: Gina Avelar, PSUL

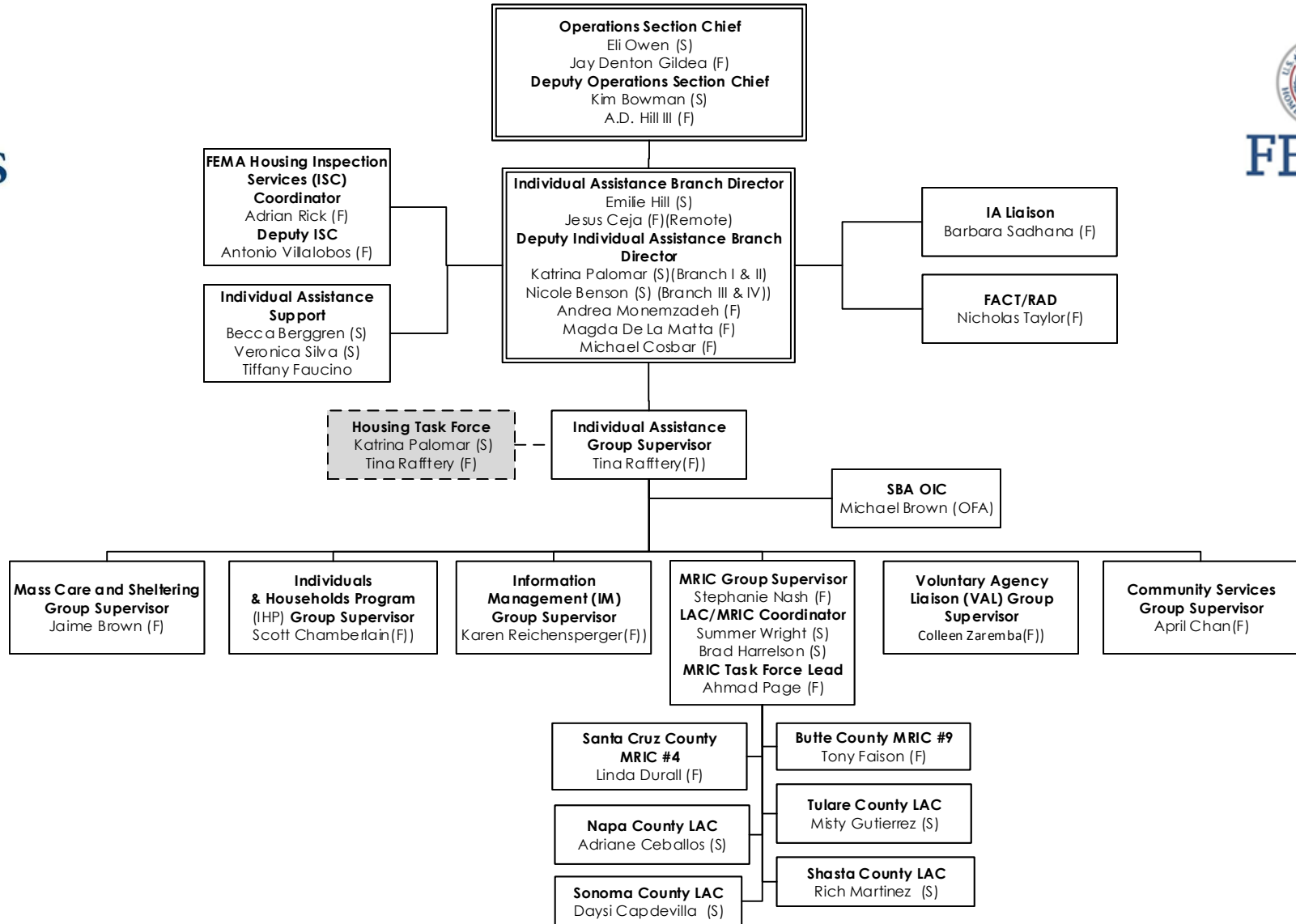
5. Reviewed By: Nicole Erlichman, PSC

IA Branch ORGANIZATION CHART

1. Incident Name
2020 July/August/September
Statewide Fires

2. Date/Time Prepared
10/15/2020

3. Operational Period Date/Time
0700 10/16/2020-
0700 10/18/2020



ICS-207

4. Prepared By: Gina Avelar, PSUL

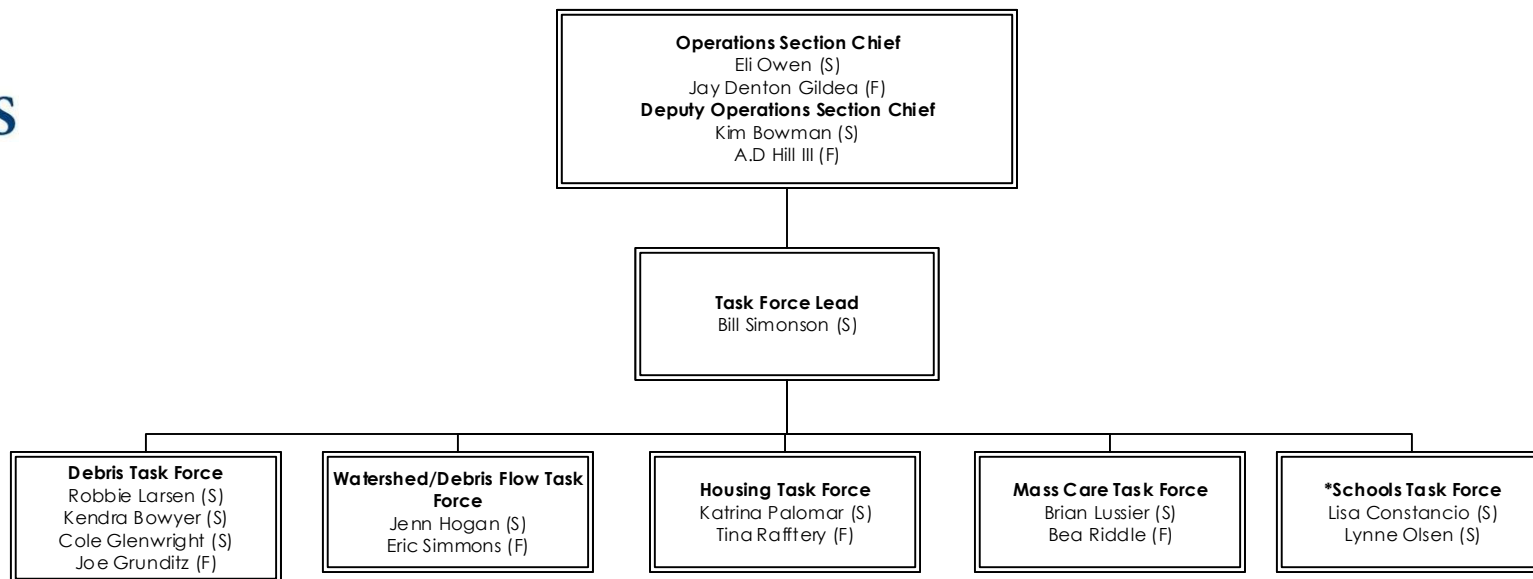
5. Reviewed By: Nicole Erlichman, PSC

TASK FORCES ORGANIZATION CHART

1. Incident Name
2020 July/August/September
Statewide Fires

2. Date/Time Prepared
10/15/2020

3. Operational Period Date/Time
0700 10/16/2020-
0700 10/18/2020



*Leveraging COVID-19 Schools Task Force

ICS-207

4. Prepared By: Gina Avelar, PSUL

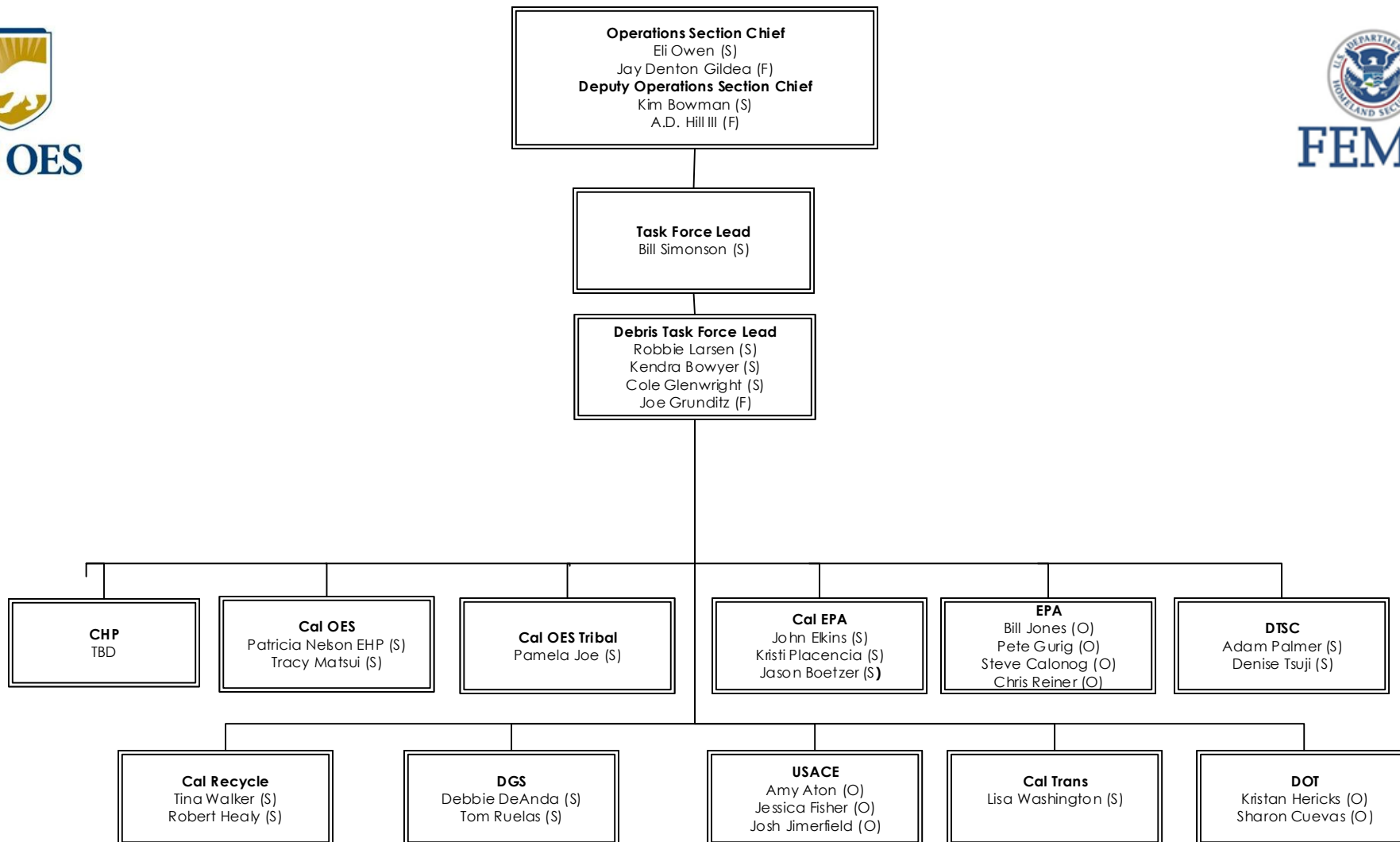
5. Reviewed By: Nicole Erlichman, PSC

DEBRIS TASK FORCE ORGANIZATION CHART

1. Incident Name
2020 July/August/September
Statewide Fires

2. Date/Time Prepared
10/15/2020

3. Operational Period Date/Time
0700 10/16/2020-
0700 10/18/2020



ICS-207

4. Prepared By: Gina Avelar, PSUL

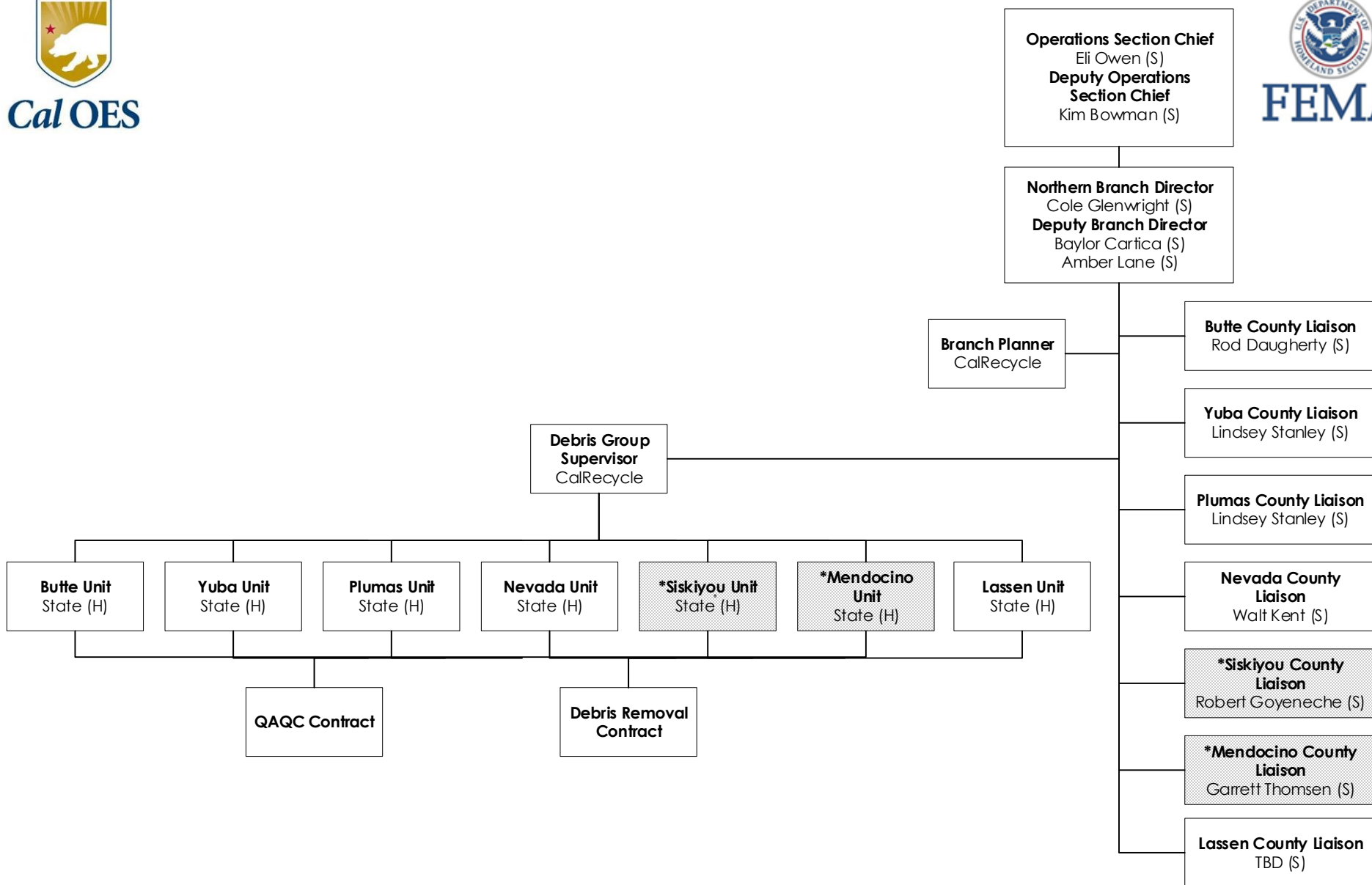
5. Reviewed By: Nicole Erlichman, PSC

DEBRIS OPS NORTHERN ORGANIZATION CHART

1. Incident Name
2020 July/August/September
Statewide Fires

2. Date/Time Prepared
10/15/2020

3. Operational Period Date/Time
0700 10/16/2020-
0700 10/18/2020



*Not Declared

ICS-207

4. Prepared By: Gina Avelar, PSUL

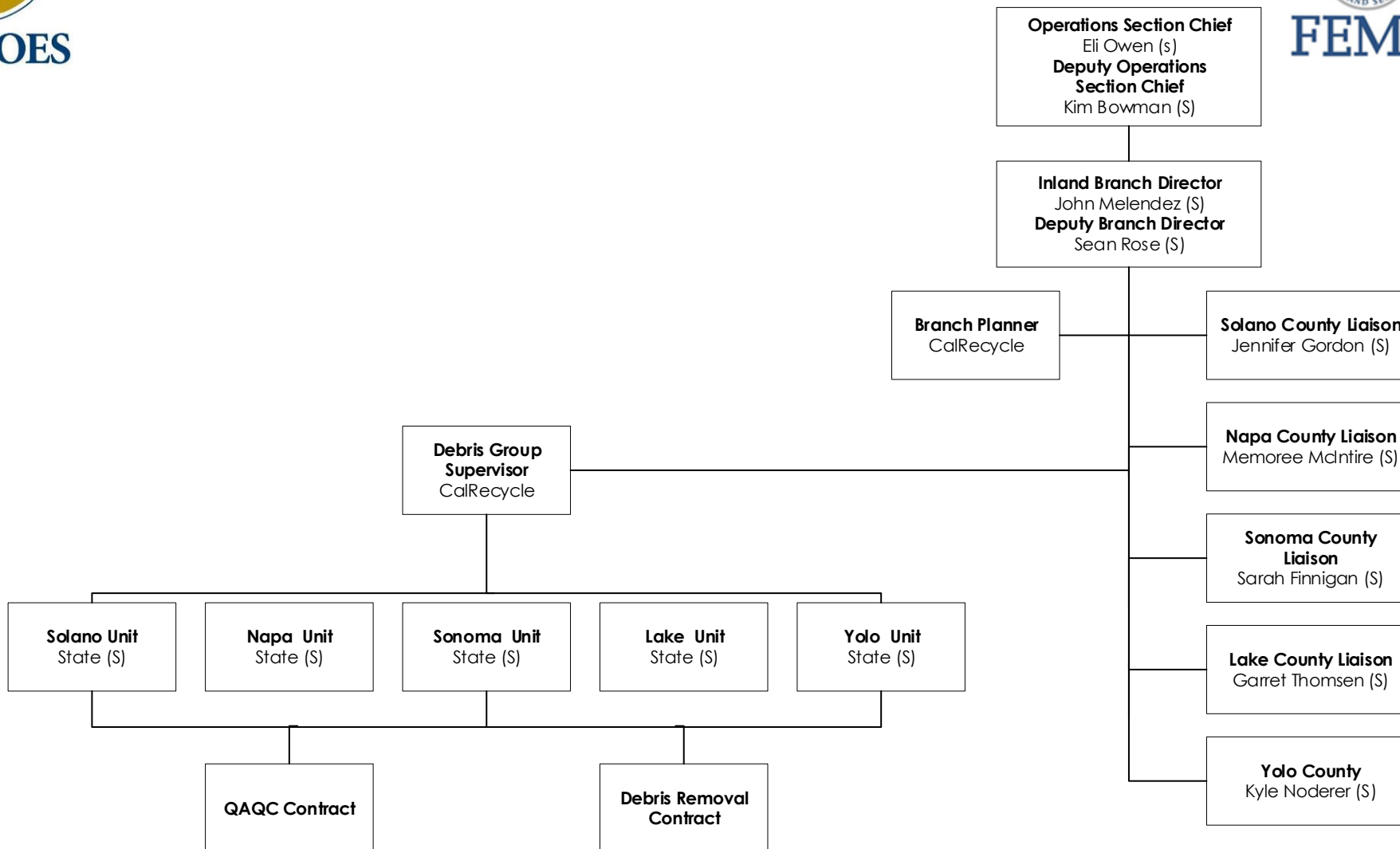
5. Reviewed By: Nicole Erlichman, PSC

DEBRIS OPS INLAND ORGANIZATION CHART

1. Incident Name
2020 July/August/September
Statewide Fires

2. Date/Time Prepared
10/15/2020

3. Operational Period Date/Time
0700 10/16/2020-
0700 10/18/2020



ICS-207

4. Prepared By: Gina Avelar, PSUL

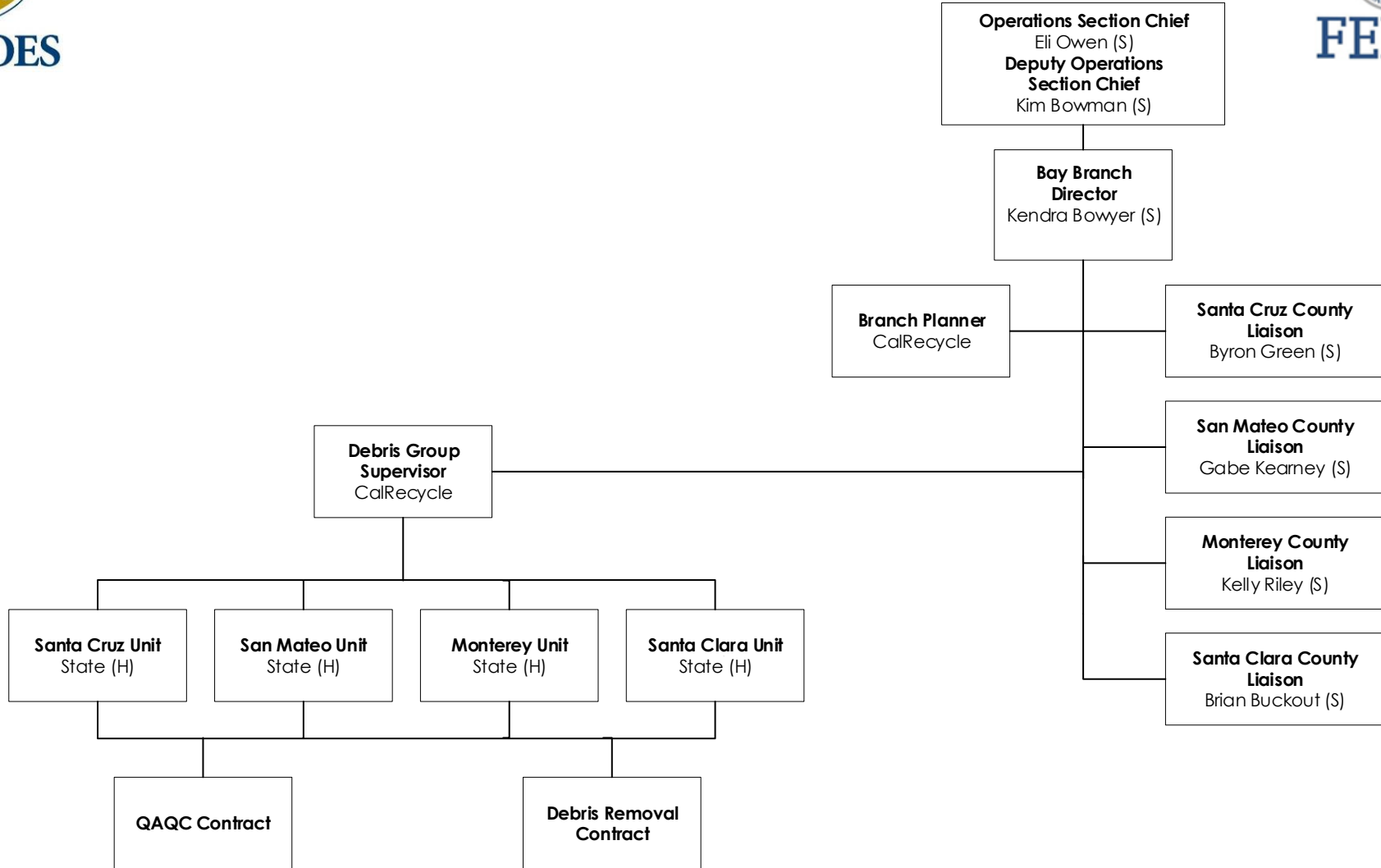
5. Reviewed By: Nicole Erlichman, PSC

DEBRIS OPS BAY ORGANIZATION CHART

1. Incident Name
2020 July/August/September
Statewide Fires

2. Date/Time Prepared
10/15/2020

3. Operational Period Date/Time
0700 10/16/2020-
0700 10/18/2020



ICS-207

4. Prepared By: Gina Avelar, PSUL

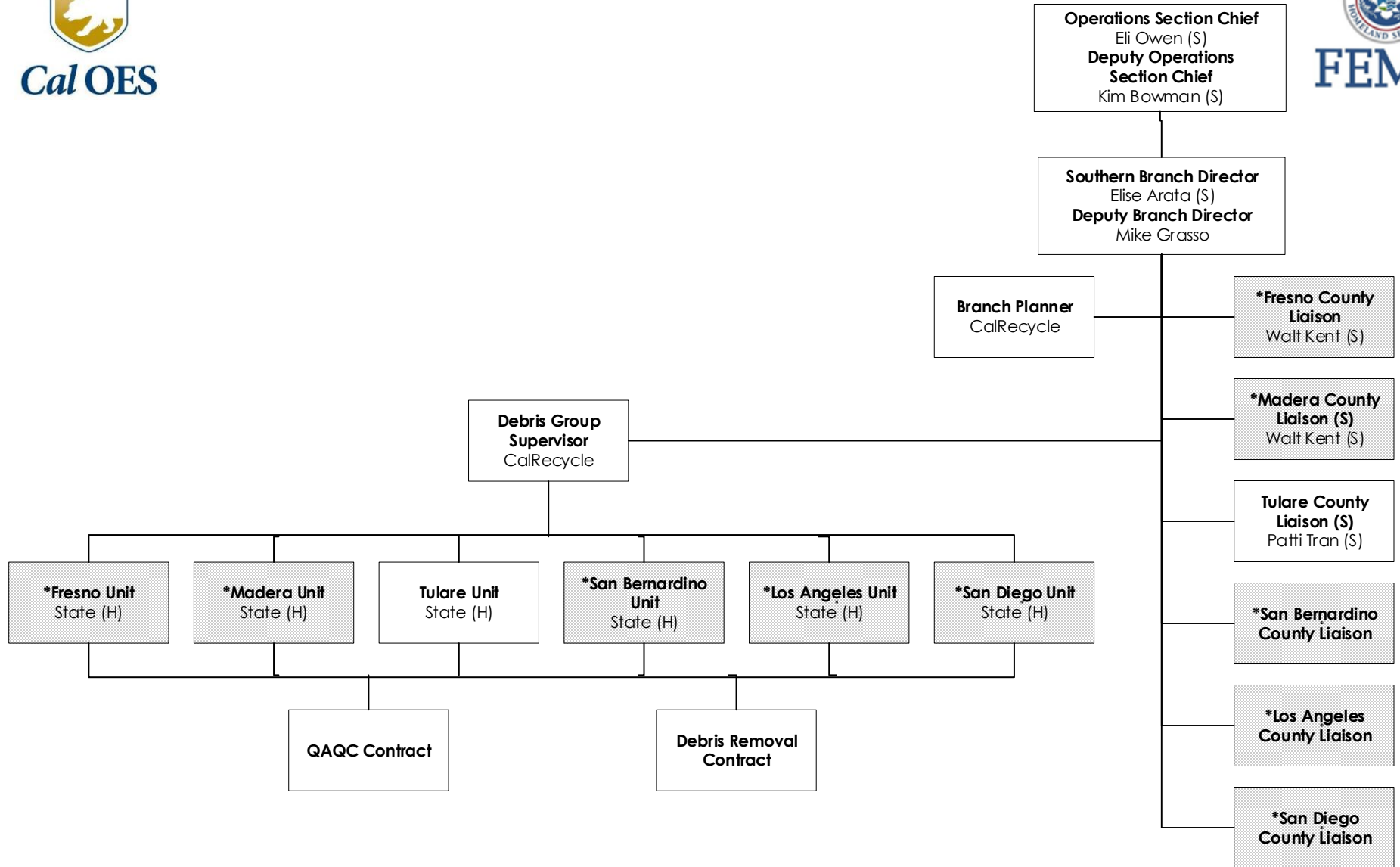
5. Reviewed By: Nicole Erlichman, PSC

DEBRIS OPS SOUTHERN ORGANIZATION CHART

1. Incident Name
2020 July/August/September
Statewide Fires

2. Date/Time Prepared
10/15/2020

3. Operational Period Date/Time
0700 10/16/2020-
0700 10/18/2020



*Not Declared

ICS-207

4. Prepared By: Gina Avelar, PSUL

5. Reviewed By: Nicole Erlichman, PSC

DEBRIS FLOW TASK FORCE ORGANIZATION CHART

1. Incident Name
2020 July/August/September
Statewide Fires

2. Date/Time Prepared
10/15/2020

3. Operational Period Date/Time
0700 10/16/2020-
0700 10/18/2020



Operations Section Chief
Eli Owen (S)
Jay Denton Gildea (F)
Deputy Operations Section Chief
Kim Bowman (S)
A.D. Hill III (F)

Task Force Lead
Bill Simonson (S)

Watershed / Debris Flow Task Force Lead
Jenn Hogan (S)
Eric Simmons (F)

Cal OES
Pat Nelson (S)
Jason Spotts (S)
Whitney Braziel (S)
Wendy Boemecke (S)
Tina Phan (S)
Doug Ganey (S)
Dominic Mezzatesta (S)

CAL FIRE
Chief Eric Huff (S)

FEMA
Jennifer Monroe (F)

CGS
Bill Short (S)

CALTRANS
Gerald Kracher (S)

DWR
Michael Day (S)
Eric Wulff (S)
John Paasch (S)

SWRCB/RWQCB
Clint Snyder (S)

CA State Parks
TBD (S)

Cal EPA
Jason Boetzer (S)
Kristi Placencia (S)

Cal Natural Resource Agency
Jessica Moore (S)

CA Fish and Wildlife
Michael Kirchner (S)
Julie Yamamoto (S)
Chad Dibble (S)

US Forest Service
Todd Ellsworth (O)

Dept. of Interior
Janet Whitlock (O)

EPA
Suzanne Marr (O)

US Fish and Wildlife
James Earley (S)

USACE
Amy Aton (O)
Jessica Fisher (O)
Josh Jimerfield (O)

National Park Service
Richard Schwab (O)

NRCS / USDA
Ernesto De La Riva (O)

NWS/NOAA
Cindy Matthews (O)

Bureau of Indian Affairs
Joshua Allen (O)

US Bureau of Reclamation
John Hutchings (O)

US Bureau of Land Management
Jack Hamby (O)

DOT
Kristan Hericks (O)
Sharon Cuevas (O)

ICS-207

4. Prepared By: Gina Avelar, PSUL

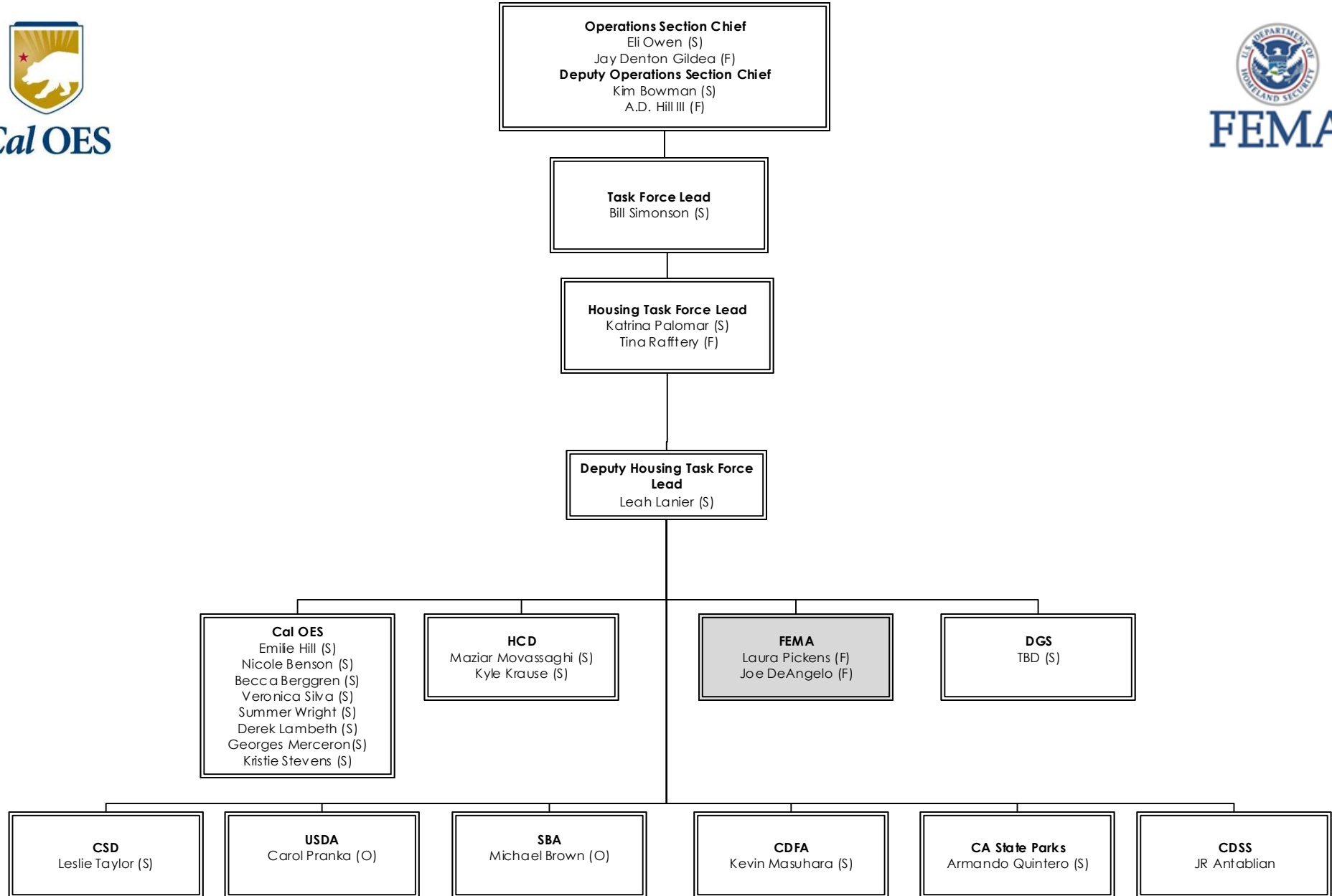
5. Reviewed By: Nicole Erlichman, PSC

HOUSING TASK FORCE ORGANIZATION CHART

1. Incident Name
2020 July/August/September
Statewide Fires

2. Date/Time Prepared
10/15/2020

3. Operational Period Date/Time
0700 10/16/2020-
0700 10/18/2020



Pending Activation

ICS-207

4. Prepared By: Gina Avelar, PSUL

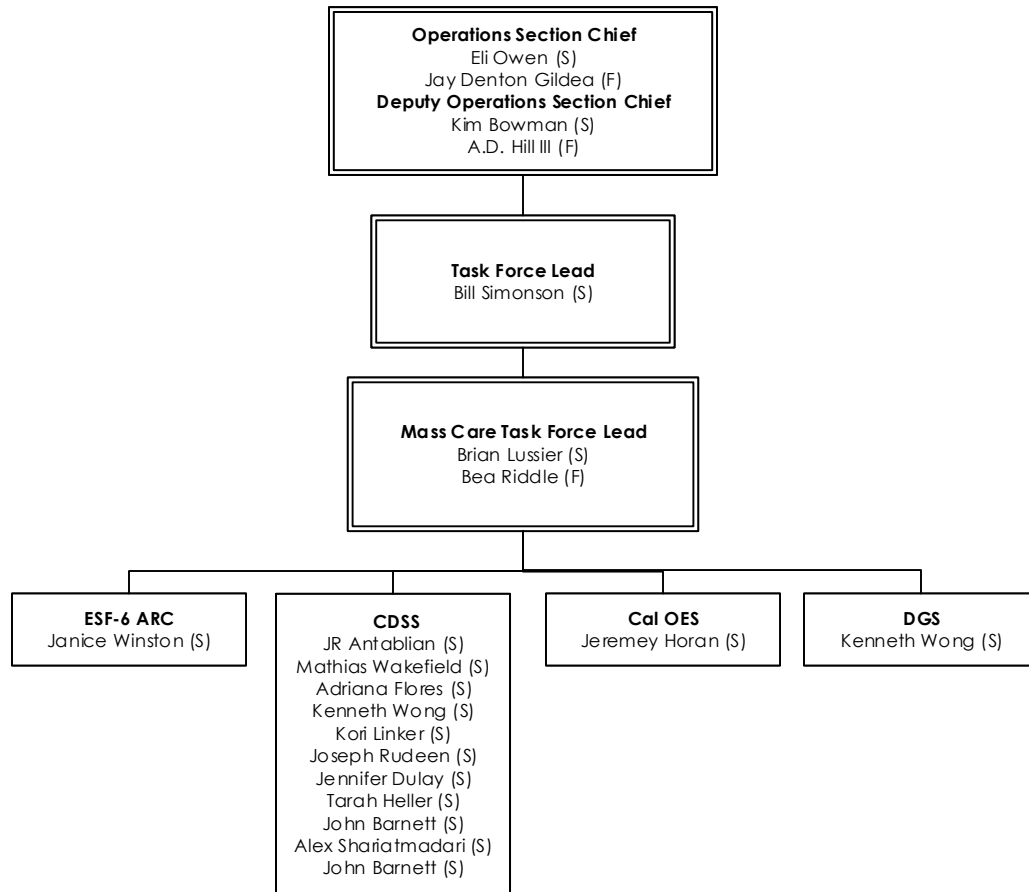
5. Reviewed By: Nicole Erlichman, PSC

MASS CARE TASK FORCE ORGANIZATION CHART

1. Incident Name
2020 July/August/September
Statewide Fires

2. Date/Time Prepared
10/15/2020

3. Operational Period Date/Time
0700 10/16/2020-
0700 10/18/2020



ICS-207

4. Prepared By: Gina Avelar, PSUL

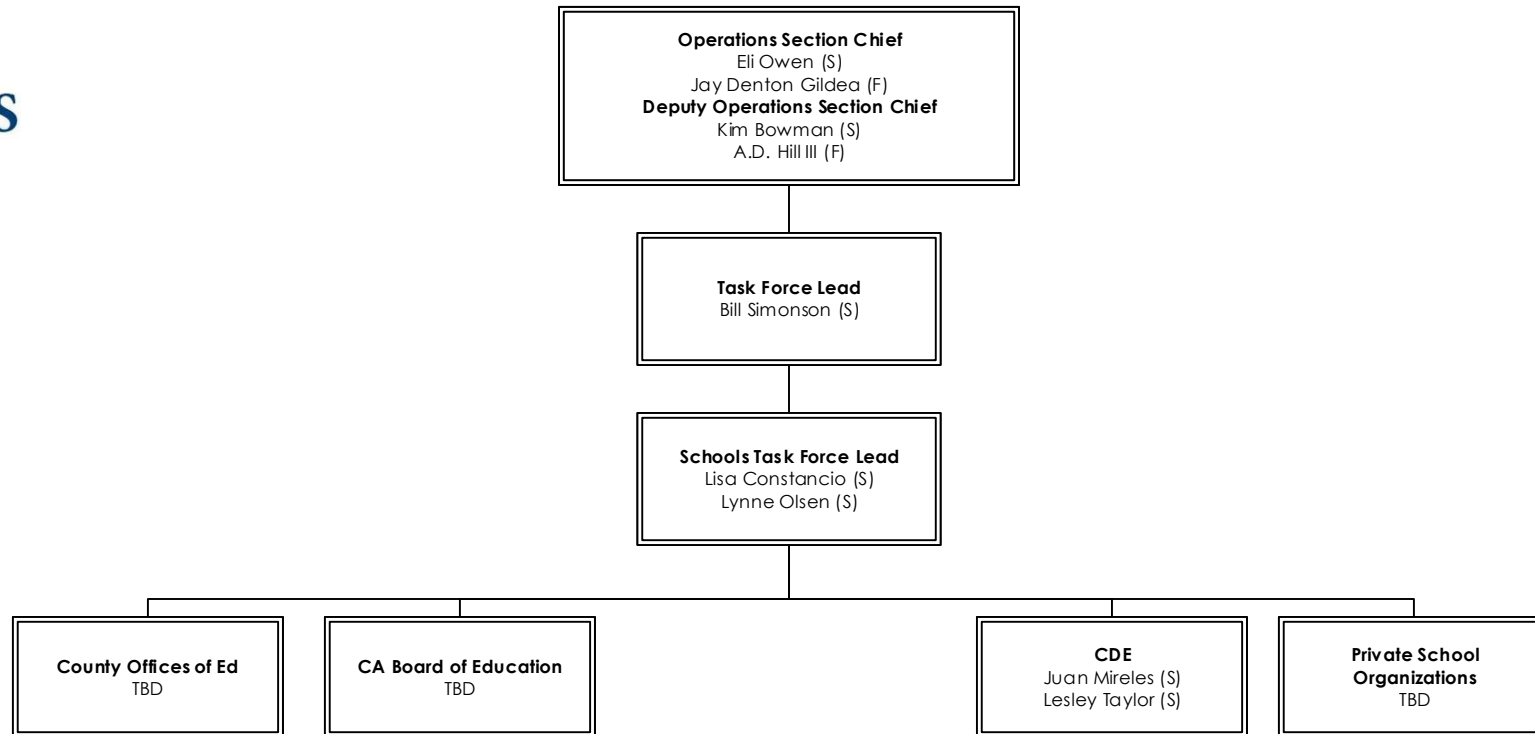
5. Reviewed By: Nicole Erlichman, PSC

SCHOOLS TASK FORCES ORGANIZATION CHART

1. Incident Name
2020 July/August/September
Statewide Fires

2. Date/Time Prepared
10/15/2020

3. Operational Period Date/Time
0700 10/16/2020-
0700 10/18/2020



*Leveraging COVID-19 Schools Task Force

ICS-207

4. Prepared By: Gina Avelar, PSUL

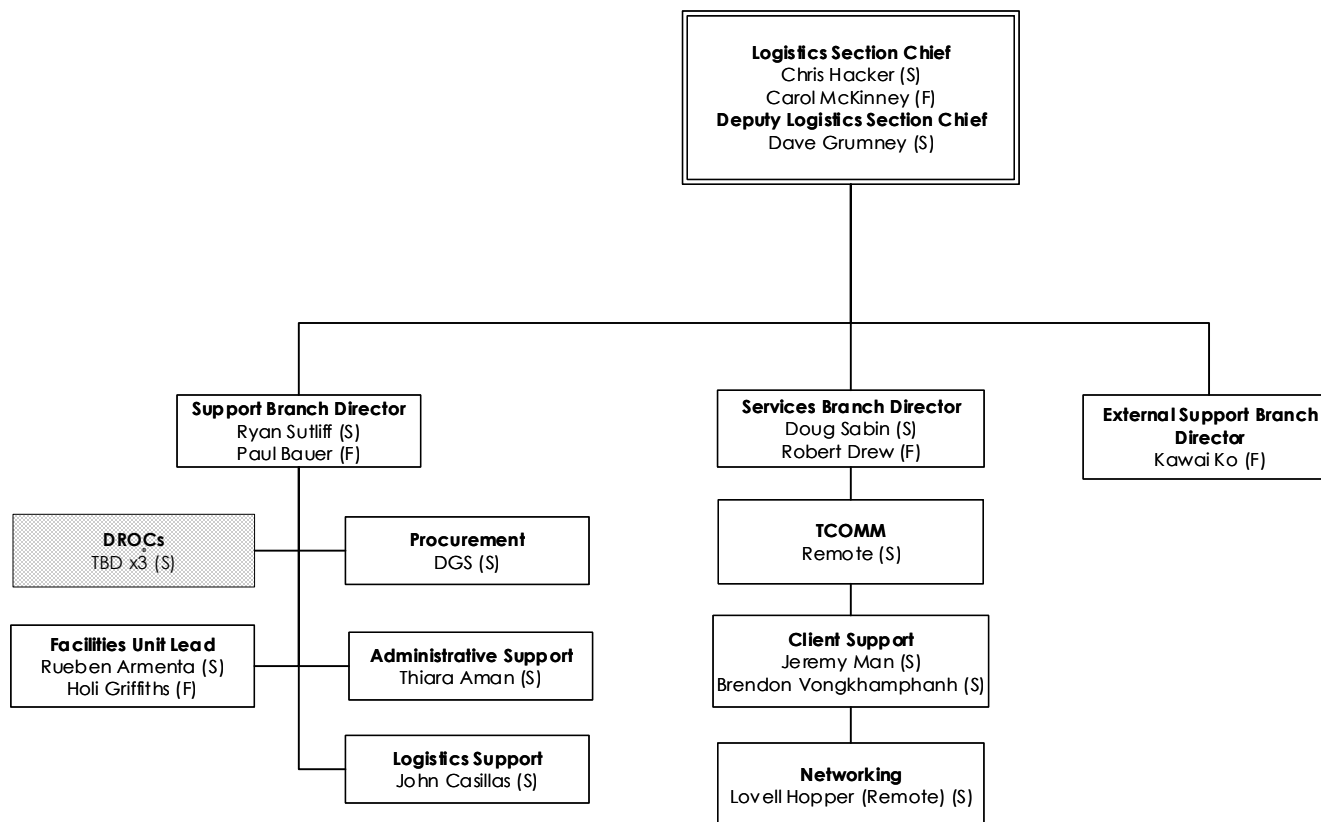
5. Reviewed By: Nicole Erlichman, PSC

LOGISTICS SECTION ORGANIZATION CHART

1. Incident Name
2020 July/August/September
Statewide Fires

2. Date/Time Prepared
10/15/2020

3. Operational Period Date/Time
0700 10/16/2020-
0700 10/18/2020



Pending Activation

ICS-207

4. Prepared By: Gina Avelar, PSUL

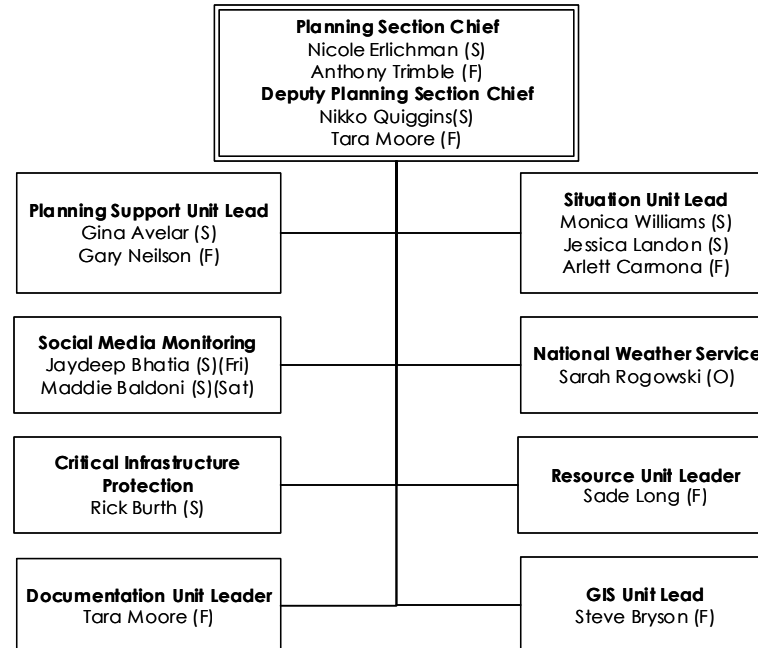
5. Reviewed By: Nicole Erlichman, PSC

PLANNING SECTION ORGANIZATION CHART

1. Incident Name
2020 July/August/September
Statewide Fires

2. Date/Time Prepared
10/15/2020

3. Operational Period Date/Time
0700 10/16/2020-
0700 10/18/2020



ICS-207

4. Prepared By: Gina Avelar, PSUL

5. Reviewed By: Nicole Erlichman, PSC



Current Wildland Fires

as of October 15 2020 - 0800 Hours



Active Fire (12)

DR-4558 Counties

LRA - Local Responsibility Area

SRA - State Responsibility Area

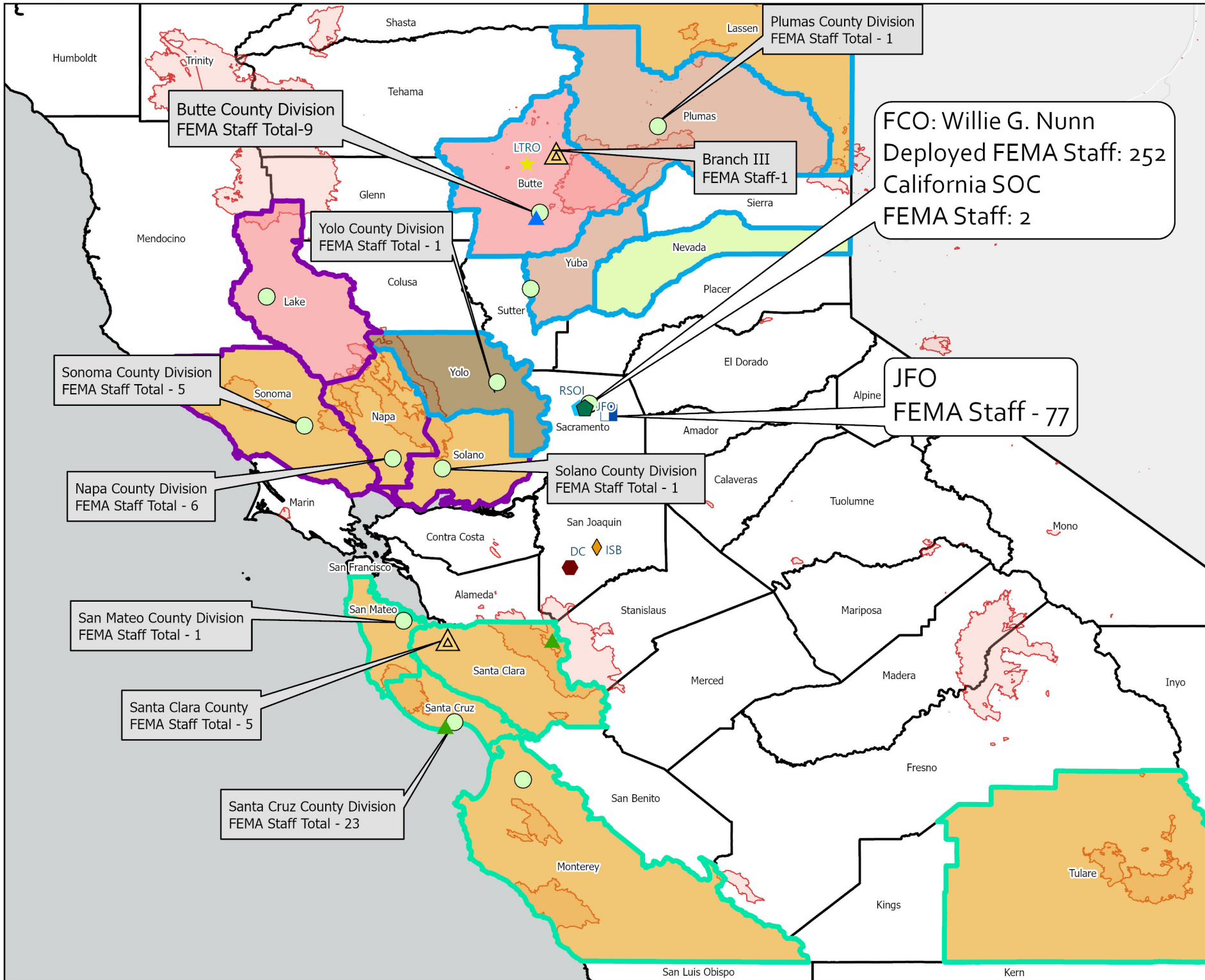
FRA - Federal Responsibility Area



October 15 2020 - 0800 hrs
 Produced by: Cal OES GIS Division
 Source: CalOES, FAMWEB 209s, IRWIN
 Active_IncidentFires/Statewide_Daily_Fire_Maps
 \Statewide_Daily_Fire_Maps.aprx

FEMA Region IX

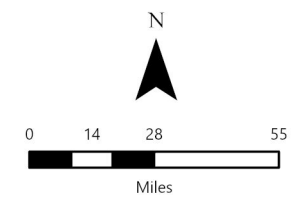
DR-4558-CA: California Wildfires
Force Laydown Map - 10/15/2020



- Facilities**
- LAC/Mobile Registration Intake Center (MRIC)
 - MRIC
 - Distribution Center
 - Emergency Operation Center
 - Incident Support Base
 - FEMA RSOI
 - Long Term Recovery Office
 - CRC
 - California SOC/FEMA IOF
 - EOC
 - JFO

- Designated Counties**
- IA/PA-B ONLY
 - IA/PA CAT A - G
 - IA/PA A & B ONLY
 - PA B ONLY
 - PA CAT A - G

- Branch**
- I
 - II
 - III



FEMA ICS 204 FORM BRANCH ASSIGNMENT LIST	1. FEMA Disaster Number: FEMA-4558-DR	2. Operational Period: 10/16/2020 0700 to 10/18/2020 0700	5. Prepared By: Sade Long, RESL Date 10/15/2020
3. Branch: Hazard Mitigation Branch		4. Division / Group: N/A	
10. Operations Personnel: Position/Contact Information OSC (State): Eli Owen 916-214-4132 Eli.Owen@CalOES.ca.gov OSC (FEMA): Jay Denton Gildea 202-320-7179 janston.dentongildea@fema.dhs.gov Branch Director (State): Branch Director (FEMA): Diane Earl 732-208-6261 diane.earl@fema.dhs.gov Div/Group Supervisor (State): Div/Group Supervisor (FEMA):			6. Reviewed By (OSC-State): Eli Owen Date 10/15/2020 7. Reviewed By (PSC-State): Nicole Erlichman Date 10/15/2020 8. Reviewed By (OSC-FEMA): Jay Denton Gildea Date 10/15/2020 9. Reviewed By (PSC-FEMA): Anthony Trimble Date 10/15/2020

11. Resources Assigned							
Resource Identifier	Functional Area	Resource Leader Name	Leader Contact Information	Total # of Persons	Work Assignment	Reporting Location/Time	Logistical needs, Special Instruction, additional information
CEO Specialists	Hazard Mitigation	(S) Jason Williams (F) Virginia Hale	(S) 916-845-8173 (F) 202-617-7023	2	Establish wildfire mitigation display; provide outreach materials for wildfire resistant rebuilding & landscaping; flood after fire and NFIP.	Puente Food Pantry 620 North St., Pescadero, CA 94060 USNG: 10S EG 55163 23463 10/16/2020 1000 PDT	N/A
HISP	Hazard Mitigation	(S) Jason Williams (F) Carlos Harris	(S) 916-845-8173 (F) 423-903-2165	1	NFIP Outreach calls to insurance agents throughout Santa Cruz County. (virtual) 10/14 - 10/16	Santa Cruz County 10/16/2020 0900 PDT	N/A

HISP	Hazard Mitigation	(S) Jason Williams (F) Carmen Ojikutu	(S) 916-845-8173 (F) 202-717-1703	1	NFIP Outreach to insurance agents throughout San Mateo County. (Virtual) 10/14 - 10/16	San Mateo County 10/16/2020 0900 PDT	N/A
CEO Specialist	Hazard Mitigation	(S) 916-845-8173 (F) Virginia Hale	(S) 916-845-8173 (F) 202-617-7023	2	Establish mitigation outreach display; provide publications for wildfire resistant construction, landscaping and NFIP.	Seaside Home Depot 1590 Canyon Del Rey Blvd., Seaside, CA USNG: 10S FF 02210 52111 10/16/2020 1000	N/A

Communications (radio frequency/channel information and/or phone contact numbers needed for this assignment):

FEMA ICS 204 FORM BRANCH ASSIGNMENT LIST	1. FEMA Disaster Number: FEMA-4558-DR	2. Operational Period: 10/16/2020 0700 to 10/18/2020 0700	5. Prepared By: Susan Hardy, RESL	Date 10/15/2020
---	---	---	---	---------------------------

3. Branch: Individual Assistance	4. Division / Group: N/A	6. Reviewed By (OSC-State): Eli Owen	Date 10/15/2020
---	---------------------------------	--	---------------------------

10. Operations Personnel: Position/Contact Information OSC (State): Eli Owen 916-214-4132 Eli.Owen@CalOES.ca.gov OSC (FEMA): Jay Denton Gildea 202-320-7179 janston.dentongildea@fema.dhs.gov Branch Director (State): Emilie Hill 916-823-1081 Emilie.Hill@CalOES.ca.gov Branch Director (FEMA): Andrea Monemzadeh 202-230-7389 andrea.monemzadeh@fema.dhs.gov Div/Group Supervisor (State): Div/Group Supervisor (FEMA):	7. Reviewed By (PSC-State): Nicole Erlichman	Date 10/15/2020
	8. Reviewed By (OSC-FEMA): Jay Denton Gildea	Date 10/15/2020
	9. Reviewed By (PSC-FEMA): Anthony Trimble	Date 10/15/2020

11. Resources Assigned

Resource Identifier	Functional Area	Resource Leader Name	Leader Contact Information	Total # of Persons	Work Assignment	Reporting Location/Time	Logistical needs, Special Instruction, additional information
SBA Officer in Charge (OIC)	Individual Assistance - General	(S) Emilie Hill (OFA) Michael Brown	(S) 916-823-1081 (OFA) 916-216-9792	5	SBA Customer Service Representatives (CSRs) contact FEMA referrals in designated counties. Customer Service Phone #:800-659-2955	virtual 10/14/2020 0900 PDT	None
Inspection Services Coordinators (ISC)	Individual Assistance - General	(S) Emilie Hill (F) Adrian Rick	(S) 916-823-1081 (F) 540-686-3807	14	Virtually inspect homes and property as referred by FEMA	virtual 10/16/2020 0900 PDT	None

Communications (radio frequency/channel information and/or phone contact numbers needed for this assignment):

FEMA ICS 204 FORM BRANCH ASSIGNMENT LIST	1. FEMA Disaster Number: FEMA-4558-DR	2. Operational Period: 10/16/2020 0700 to 10/18/2020 0700	5. Prepared By: Susan Hardy Date 10/15/2020
3. Branch: Northern Branch I		4. Division / Group: N/A	6. Reviewed By (OSC-State): Eli Owen Date 10/15/2020
10. Operations Personnel: Position/Contact Information OSC (State): Eli Owen 916-214-4132 Eli.Owen@CalOES.ca.gov OSC (FEMA): Jay Denton Gildea 202-320-7179 janston.dentongildea@fema.dhs.gov Branch Director (State): Branch Director (FEMA): Therron (Tex) Burns 404-695-1614 therron.burns@fema.dhs.gov Div/Group Supervisor (State): Div/Group Supervisor (FEMA):			7. Reviewed By (PSC-State): Nicole Erlichman Date 10/15/2020 8. Reviewed By (OSC-FEMA): Jay Denton Gildea Date 10/15/2020 9. Reviewed By (PSC-FEMA): Anthony Trimble Date 10/15/2020

11. Resources Assigned							
Resource Identifier	Functional Area	Resource Leader Name	Leader Contact Information	Total # of Persons	Work Assignment	Reporting Location/Time	Logistical needs, Special Instruction, additional information
Tulare County	Individual Assistance - DRCs	(S) Misty Gutierrez	(916) 516-6207	4	Assist survivors with disaster information in Tulare County through LAC	Tulare County Government Plaza South 1055 W. Henderson Ave., Porterville, CA 93257 USNG: 11S LV 16227 94792 10/14/2020 0800 PDT	(S) Summer Wright- LAC Coordinator (916) 715-3558 Dates of Operations: 10/8 - TBD M- F: 0800- 1700 Sat-Sun: 0900 - 1500

Shasta County [Undesignated] LAC	Individual Assistance - DRCs	(S) Rich Martinez	916-628-4411	11	Assist survivors with disaster information in Shasta County through LAC	Shasta District Fair and Event Center 1890 Briggs Street, Anderson, CA 96007 USNG: 10T EK 58639 78274 10/14/2020 1000 PDT	(S) Summer Wright - LAC Coordinator (916) 715-3558 Hours of Operations: 10/14-10/21: 1000 - 1900 PDT
--	------------------------------------	----------------------	--------------	----	---	--	---

Communications (radio frequency/channel information and/or phone contact numbers needed for this assignment):

FEMA ICS 204 FORM DIVISION ASSIGNMENT LIST	1. FEMA Disaster Number: FEMA-4558-DR	2. Operational Period: 10/16/2020 0700 to 10/18/2020 0700	5. Prepared By: Susan Hardy, RESL Date 10/15/2020
---	---	---	--

3. Branch: Bay Branch III	4. Division / Group: Monterey County Division	6. Reviewed By (OSC-State): Darren Tsang Date 10/15/2020
----------------------------------	--	---

9. Operations Personnel: Position/Contact Information OSC (State): Darren Tsang 916-636-3757 SOCOperations@SOC.CalOES.ca.gov OSC (FEMA): Jay Denton Gildea 202-320-7179 janston.dentongildea@fema.dhs.gov Branch Director (State): Branch Director (FEMA): Fred Wehrenburg 510-316-7636 fred.wehrenburg@fema.dhs.gov Div/Group Supervisor (State): Div/Group Supervisor (FEMA): Glenn Bowles 202-288-6204 GLENN.BOWLESII@FEMA.DHS.GOV	7. Reviewed By (PSC-State): Jeff Newman Date 10/15/2020 8. Reviewed By (OSC-FEMA): Jay Denton Gildea Date 10/15/2020 9. Reviewed By (PSC-FEMA): Anthony Trimble Date 10/15/2020
--	--

10. Resources Assigned

Resource Identifier	Functional Area	Resource Leader Name	Leader Contact Information	Total # of Persons	Work Assignment	Reporting Location/Time	Logistical needs, Special Instruction, additional information
EPA Monterey HHW	ESF 10: Hazardous Material	(S) Kendra Bowyer (OFA) Bill Jones	(S) 916-214-2043 (F)619-806-6737	18	Assessment and collection of HHW in Carmel Fire area (Zone 17).	10/16/2020 0700 PDT	None

Communications (radio frequency/channel information and/or phone contact numbers needed for this assignment):

FEMA ICS 204 FORM DIVISION ASSIGNMENT LIST	1. FEMA Disaster Number: FEMA-4558-DR	2. Operational Period: 10/16/2020 0700 to 10/18/2020 0700	5. Prepared By: Susan Hardy, RESL Date 10/15/2020
3. Branch: Bay Branch III		4. Division / Group: Santa Cruz County Division	
9. Operations Personnel: Position/Contact Information OSC (State): Darren Tsang 916-636-3757 SOCOperations@SOC.CalOES.ca.gov OSC (FEMA): Jay Denton Gildea 202-320-7179 janston.dentongildea@fema.dhs.gov Branch Director (State): Adam Amaral 831-444-1351 831-444-1351 Branch Director (FEMA): Div/Group Supervisor (State): Brian Buckhout 916-628-5897 Brian.Buckhout@CalOES.ca.gov Div/Group Supervisor (FEMA): Fred Wehrenberg 510-316-7636 Fred.Wehrenberg@fema.dhs.gov			7. Reviewed By (OSC-State): Jeff Newman Date 10/15/2020
			8. Reviewed By (OSC-FEMA): Jay Denton Gildea Date 10/15/2020
			9. Reviewed By (PSC-FEMA): Anthony Trimble Date 10/15/2020

10. Resources Assigned							
Resource Identifier	Functional Area	Resource Leader Name	Leader Contact Information	Total # of Persons	Work Assignment	Reporting Location/Time	Logistical needs, Special Instruction, additional information
Santa Cruz County MRIC #4	Individual Assistance - DRCs	(S) Kendra Bowyer (F) Linda Durall	(S) 916-214-2043 (F) 202-809-1690	11	Assist survivors with disaster information in Santa Cruz County through MRIC.	205 Front Street, Santa Cruz, CA, 95060 USNG: 10S EF 86919 91782 10/16/2020 1000 PDT	DSA Crew Leader (Sedarick Turner - 202-705-7431) MCOV 53 (Operator - Joe Phillips - 225-910-5187) Hours of Operation: 1000-1800 PDT Closed Sundays Last day of operation: 10/21
EPA Santa Cruz HHW	ESF 10: Hazardous Material	(S) Kendra Bowyer (OFA) Bill Jones	(S) 916-214-2043 (F) 619-806-6737	36	West Division - HHW assessment and removal in Zones 3 and 4.	10/16/2020 0700 PDT	None

EPA Santa Cruz HHW	ESF 10: Hazardous Material	(S) Kendra Bowyer (OFA) Bill Jones	(S) 916-214-2043 (F) 619-806-6737	28	Coordinate HHW recon, removal, and staging in Santa Cruz County (see additional information for more details)	10/16/2020 0700 PDT	Manage the main staging area in Felton. Coordinate recon and tree clearance, as well as HHW collection and processing, UXO, air monitoring/sampling, high haz and asbestos sweeper work. Coordinate with West Division operating at Davenport Staging Area. Support data collection and daily field assignments. Support data collection and daily field assignments.
USEPA Santa Cruz	ESF 10: Hazardous Material	(S) Kendra Bowyer (OFA) Bill Jones	(S) 916-214-2043 (F) 619-806-6737	33	East Division - HHW assessment and removal work in Zones 10, 12, 14, &15.	10/16/2020 0700 PDT	None
DSA Crew 1	Disaster Survivor Assistance	(S) Kendra Bowyer (F) Jazia Taylor	(S) 916-214-2043 (F) 202-706-4454	6	Assist survivors with disaster assistance information in Santa Cruz County at the Boulder Creek Recreation & Park District Foundation (Community Relief)	15685 Forest Hill Drive Santa Cruz, CA USNG: 10S EF 86444 92444 10/17/2020 1100 PDT	DSA Crew Leader (Jazia Taylor) MCOV 102 (Operator - Melvin Glaize- 202-718-1288) Hours of Operation: 1100-1400 PDT

Communications (radio frequency/channel information and/or phone contact numbers needed for this assignment):

FEMA ICS 204 FORM DIVISION ASSIGNMENT LIST	1. FEMA Disaster Number: FEMA-4558-DR	2. Operational Period: 10/16/2020 0700 to 10/18/2020 0700	5. Prepared By: Sade Long, RESL	Date 10/15/2020
---	---	---	---	---------------------------

3. Branch: Inland Branch II	4. Division / Group: Lake County Division	6. Reviewed By (OSC-State): Eli Owen	Date 10/15/2020
------------------------------------	--	--	---------------------------

9. Operations Personnel: Position/Contact Information		7. Reviewed By (PSC-State): Nicole Erlichman	Date 10/15/2020
OSC (State): Eli Owen 916-214-4132 Eli.Owen@CalOES.ca.gov OSC (FEMA): Jay Denton Gildea 202-320-7179 janston.dentongildea@fema.dhs.gov Branch Director (State): Branch Director (FEMA): Jon Bajon 609-752-9843 jon.bajon@fema.dhs.gov Div/Group Supervisor (State): Div/Group Supervisor (FEMA): Thomas Mattioli 256-282-7753 thomas.mattioli@fema.dhs.gov		8. Reviewed By (OSC-FEMA): Jay Denton Gildea	Date 10/15/2020
		9. Reviewed By (PSC-FEMA): Anthony Trimble	Date 10/15/2020

10. Resources Assigned

Resource Identifier	Functional Area	Resource Leader Name	Leader Contact Information	Total # of Persons	Work Assignment	Reporting Location/Time	Logistical needs, Special Instruction, additional information
MRSP	ESF 15: External Affairs	(S) John Melendez (F) Briana Summer Fenton	(S) 916-601-2649 (F) 256-454-1893	1	Virtual Phone Radio Interview with KPFZ 88.1 FM. Station location in designated county and covers all counties in Northern Coastal Branch.	149 North Main St. Lakeport USNG: 10S EJ 07341 21520 10/16/2020 9:05 am PST	Topics: New registration deadline, ways to register, registration process, information on determination letter and stay in touch with FEMA through creating account

Communications (radio frequency/channel information and/or phone contact numbers needed for this assignment):

FEMA ICS 204 FORM DIVISION ASSIGNMENT LIST	1. FEMA Disaster Number: FEMA-4558-DR	2. Operational Period: 10/16/2020 0700 to 10/18/2020 0700	5. Prepared By: Sade Long, RESL Date 10/15/2020
---	---	---	--

3. Branch: Inland Branch II	4. Division / Group: Napa County Division	6. Reviewed By (OSC-State): Eli Owen Date 10/15/2020
------------------------------------	--	---

9. Operations Personnel: Position/Contact Information OSC (State): Eli Owen 916-214-4132 Eli.Owen@CalOES.ca.gov OSC (FEMA): Jay Denton Gildea 202-320-7179 janston.dentongildea@fema.dhs.gov Branch Director (State): Artis Souza 916-591-1044 Artis.Souza@CalOES.ca.gov Branch Director (FEMA): David Winterle 202-368-1604 david.winterle@fema.dhs.gov Div/Group Supervisor (State): Memoree McIntire 510-220-0185 Memoree.McIntire@CalOES.ca.gov Div/Group Supervisor (FEMA): Joh Bajon 609-752-9843 jon.bajon@fema.dhs.gov		7. Reviewed By (PSC-State): Nicole Erlichman Date 10/15/2020 8. Reviewed By (OSC-FEMA): Jay Denton Gildea Date 10/15/2020 9. Reviewed By (PSC-FEMA): Anthony Trimble Date 10/15/2020
---	--	---

10. Resources Assigned							
Resource Identifier	Functional Area	Resource Leader Name	Leader Contact Information	Total # of Persons	Work Assignment	Reporting Location/Time	Logistical needs, Special Instruction, additional information
Napa County [Undesignated] LAC	Individual Assistance - DRCs	(S) Adriane Ceballos	(916) 823-6474	3	Assist survivors with disaster information in Napa County through LAC	Napa County HHSA 2751 Napa Valley Corporate Dr. Napa, CA 94558 USNG: 10S EH 63485 33797 10/16/2020 0900 PST	(S) Summer Wright LAC Coordinator 916-715-3558 Hours of Operation: 10/5 – TBD. Mon – Sun: 0900 - 1800 Napa County LAC will move on 10/17/2020 to: 1428 Spring Street St. Helena, CA 94574

CA DTSC HHW Crew 1	ESF 10: Hazardous Material	(S) Kristi Placencia	916-601-7845	1	Remove HHW in Napa County	Napa County EOC 1195 Third Street, Suite B-20, Napa, California, 94559 USNG: 10S EH 62515 39058 10/17/2020 0700 PDT	None
-----------------------	----------------------------------	-------------------------	--------------	---	---------------------------	--	------

Communications (radio frequency/channel information and/or phone contact numbers needed for this assignment):

FEMA ICS 204 FORM DIVISION ASSIGNMENT LIST	1. FEMA Disaster Number: FEMA-4558-DR	2. Operational Period: 10/16/2020 0700 to 10/18/2020 0700	5. Prepared By: Susan Hardy, RESL Date 10/15/2020
---	---	---	--

3. Branch: Inland Branch II	4. Division / Group: Sonoma County Division	6. Reviewed By (OSC-State): Eli Owen Date 10/15/2020
------------------------------------	--	---

9. Operations Personnel: Position/Contact Information OSC (State): Eli Owen 916-214-4132 Eli.Owen@CalOES.ca.gov OSC (FEMA): Jay Denton Gildea 202-320-7179 janston.dentongildea@fema.dhs.gov Branch Director (State): Branch Director (FEMA): David Winterle 202-368-1604 david.winterle@fema.dhs.gov Div/Group Supervisor (State): Div/Group Supervisor (FEMA): Rita Bazazzadeh (202) 316-7842 rita.bazazzadeh@fema.dhs.gov	7. Reviewed By (PSC-State): Nicole Erlichman Date 10/15/2020
	8. Reviewed By (OSC-FEMA): Jay Denton Gildea Date 10/15/2020
	9. Reviewed By (PSC-FEMA): Anthony Trimble Date 10/15/2020

10. Resources Assigned

Resource Identifier	Functional Area	Resource Leader Name	Leader Contact Information	Total # of Persons	Work Assignment	Reporting Location/Time	Logistical needs, Special Instruction, additional information

Communications (radio frequency/channel information and/or phone contact numbers needed for this assignment):

FEMA ICS 204 FORM DIVISION ASSIGNMENT LIST	1. FEMA Disaster Number: FEMA-4558-DR	2. Operational Period: 10/16/2020 0700 to 10/18/2020 0700	5. Prepared By: Sade Long, RESL	Date 10/15/2020
3. Branch: Northern Branch I	4. Division / Group: Butte County Division		6. Reviewed By (OSC-State): Eli Owen	Date 10/15/2020
9. Operations Personnel: Position/Contact Information			7. Reviewed By (PSC-State): Nicole Erlichman	Date 10/15/2020
OSC (State): Eli Owen 916-214-4132 Eli.Owen@CalOES.ca.gov				
OSC (FEMA): Jay Denton Gildea 202-320-7179 janston.dentongildea@fema.dhs.gov				
Branch Director (State):			8. Reviewed By (OSC-FEMA): Jay Denton Gildea	Date 10/15/2020
Branch Director (FEMA): Therron (Tex) Burns 404-695-1614 therron.burns@fema.dhs.gov				
Div/Group Supervisor (State):			9. Reviewed By (PSC-FEMA): Anthony Trimble	Date 10/15/2020
Div/Group Supervisor (FEMA): Rita Bazazzadeh 202-316-7842 rita.bazazzadeh@fema.dhs.gov				

10. Resources Assigned							
Resource Identifier	Functional Area	Resource Leader Name	Leader Contact Information	Total # of Persons	Work Assignment	Reporting Location/Time	Logistical needs, Special Instruction, additional information
DSA MRIC #5	Disaster Survivor Assistance	(S) Cole Glenwright (F) Tony Faison (TFL)	(S) 916-425-0302 (F) 202-531-0458	11	Assist survivors with disaster information in Butte County through the MRIC. Tractor Supply Company (Parking Lot Only) 2000 Feather River Blvd Oroville, CA 95965	Butte County MRIC #9 2000 Feather River Blvd, Oroville, CA, 95965 USNG: 10S FJ 22866 73489 10/16/2020 1000 PDT	1 MCOV 1 DRC Kit DSA Crews 3 & 5 2 crew leads, 6 specialists Mass Care (2) MCOV 106 (Operator - Julie Sendra - 267-234-3402) Hours of Operations: Monday - Saturday: 1000-1600 Sunday: Closed

CA DTSC HHW Crews 1, 2, 3, & 4	ESF 10: Hazardous Material	(S) Kristi Placencia	916-601-7845	4	Remove HHW in Butte County	Butte County HHW 1111 Marauder Street, Chico, CA 95973 USNG: 10S EK 98247 06597 10/16/2020 0700 PDT	None
--------------------------------------	----------------------------------	-------------------------	--------------	---	----------------------------	--	------

Communications (radio frequency/channel information and/or phone contact numbers needed for this assignment):

ICS 206 MEDICAL PLAN JFO-RANCHO CORDOVA	1. Incident Name	2. Date Prepared	3. Time Prepared	4. Operational Period
	2020 July/August/September Statewide Fires	10/15/2020	0800 PDT	0700 PDT 10/16/2020 0700 PDT 10/18/2020

5. Incident Medical Aid Station

Medical Aid Stations	Locations	Paramedics on Site?	
		Yes	No
AED & First Aid Station	Suite A		X
AED & First Aid Station	Suite B		X

6. Transportation

Ambulance Services

Name	Address	Phone	Paramedics on Site?
Sacramento County Fire EMS		911	Yes

7. Medical Care

Hospital

Name	Address	Phone	Helipad	
			Yes	No
UC Davis Medical Center (Level I)	315 Stockton Boulevard, Sacramento, CA 95817 USNG: 10S FH 34024 68955	916-734-2011	X	
Mercy Hospital of Folsom	1650 Creekside Drive, Folsom, CA 95630 USNG: 10S FH 61302 81913	916- 983-7400		X
Sutter Health Urgent Care Sacramento	201 Alhambra Blvd., Sacramento, CA 95816 USNG: 10S FH 34007 71444	916-731-7728		X
Sutter Medical Center (Stroke Center)	2825 Capitol Avenue, Sacramento, CA 95816 USNG: 10S FH 33314 70200	916-454-2222		X
Sacramento VA Medical Center	10535 Hospital Way, Mather CA 95655 USNG: 10S FH 48432 70698	916-843-7000		X

Urgent Care

Name	Address	Phone	Hours	
Rancho Cordova Walk- In Care	4040 Sunrise Blvd., Suite 130, Rancho Cordova, CA, 95742 USNG: 10S FH 53094 69082	800-972-5547	0800	1700
Concentra Urgent Care	10670 White Rock Rd Suite 100, Rancho Cordova, CA 95670 USNG: 10S FH 47386 72186	916-364-1733	0800	1700

8. Medical Emergency Procedures

- Care for all minor injuries on site.
- Stabilize all major injuries and call 9-1-1.
- Transport using local ambulance service.
- State Employees: After emergency services are called, notify the Warning Center (916-845-8911).
- Report the emergency by first calling 911.

- Limit the number of co-workers in contact with a sick person, practice physical distancing of at least six feet and wear a cloth face mask
- Provide psychological first aid.
- If providing first aid, within the scope of training, follow standard precautions, have the sick person place a face mask over their nose and mouth and physically distance at least six feet, until that person has done so and use appropriate personal protective equipment (PPE). Following care, properly discard PPE and perform hand hygiene.
- Report the emergency to your supervisor and the Safety Officer.

ICS 206 Medical Plan

9. Prepared by
Gina Avelar

Reviewed by
Lucas Lambert

ICS 206 MEDICAL PLAN NAPA LAC	1. Incident Name 2020 July/ August/September Statewide Fires	2. Date Prepared 10/15/2020	3. Time Prepared 0700 PDT	4. Operational Period 0700 PDT 10/16/2020 0700 PDT 10/18/2020	
	5. Incident Medical Aid Station				
Medical Aid Stations	Locations	Paramedics on Site?			
		Yes	No		
First Aid Kit	2751 Napa Valley Corporate Drive, Napa, CA 94558		X		
First Aid Kit	1428 Spring Street, St. Helena, CA 94574		X		
6. Transportation					
Ambulance Services					
Name	Address	Phone	Paramedics on Site?		
Piner's Napa Ambulance Services, Inc.	1820 Pueblo Ave, Napa, CA 94558	707-224-3123	BLS Only		
7. Medical Care					
Hospital					
Name	Address	Phone	Helipad		
			Yes	No	
Queen of the Valley Medical Center	1000 Trancas St, Napa, CA 94558	707-252-4411	X		
Kaiser Permanente Medical Center	1761 Broadway, Vallejo, CA 94589	707-651-1000		X	
Adventist Health St. Helena	10 Woodland Rd., St. Helena, CA 94574	707-963-3611	X		
Urgent Care					
Name	Address	Phone	Hours		
St. Joseph Health Prompt Care	1621 Imola Avenue West River Park, Napa, CA 94559	707-251-4280	10 am	8 pm	
Kaiser Permanente Medical Center	1761 Broadway, Vallejo, CA 94589	707-651-1000	8 am	5 pm	
8. Medical Emergency Procedures					
<ul style="list-style-type: none"> - Care for all minor injuries on site. - Stabilize all major injuries and call 9-1-1. - Transport using local ambulance service. - After emergency services are called, notify the Warning Center (916-845-8911). 					
ICS 206 Medical Plan	9. Prepared by Gina Avelar		10. Reviewed by Lucas Lambert		

ICS 206 MEDICAL PLAN SANTA CRUZ MRIC	1. Incident Name 2020 July/ August/September Statewide Fires	2. Date Prepared 10/15/2020	3. Time Prepared 0700 PDT	4. Operational Period 0700 PDT 10/16/2020 0700 PDT 10/18/2020	
	5. Incident Medical Aid Station				
	Medical Aid Stations	Locations	Paramedics on Site?		
			Yes	No	
First Aid Kit	140 Front Street, Santa Cruz, CA 95060		X		
6. Transportation					
Ambulance Services					
Name	Address	Phone	Paramedics on Site?		
American Medical Response	116 Hubbard St., Santa Cruz, CA 95060	831-423-7030	Yes		
7. Medical Care					
Hospital					
Name	Address	Phone	Helipad		
			Yes	No	
Dominican Hospital	1555 Soquel Drive, Santa Cruz, CA 95065	831-462-7700	X		
Urgent Care					
Name	Address	Phone	Hours		
Dignity Health – Urgent Care	1820 41 st Avenue, Suite C, Capitola, CA 95010	831-867-6396	0800	2000	
8. Medical Emergency Procedures					
<ul style="list-style-type: none"> - Care for all minor injuries on site. - Stabilize all major injuries and call 9-1-1. - Transport using local ambulance service. - After emergency services are called, notify the Warning Center (916-845-8911). 					
ICS 206 Medical Plan	9. Prepared by Gina Avelar		10. Reviewed by Lucas Lambert		

ICS 206 MEDICAL PLAN BUTTE COUNTY	1. Incident Name 2020 July/ August/September Statewide Fires	2. Date Prepared 10/15/2020	3. Time Prepared 0700 PDT	4. Operational Period 0700 PDT 10/16/2020 0700 PDT 10/18/2020
--	--	---------------------------------------	-------------------------------------	--

5. Incident Medical Aid Station

Medical Aid Stations	Locations	Physician or Paramedics	
		Yes	No
Red Cross Medical Station	1601 Esplanade Chico, CA 95926		X

6. Transportation

A. Ambulance Services

Name	Address	Phone	Paramedics	
			Yes	No
Butte County Fire EMS		911	X	

7. Medical Care

Workers' Compensation Facilities

Name	Location	Phone	Paramedics	
			Yes	No
California Occupational Medical Professional	1940 Feather River Blvd., Oroville, CA 95928	530-534-5135	X	
California Occupational Medical Professional	505 Wall St. Chico, CA 95928	530-809-4907	X	

Hospitals

Name	Address	Phone	Helipad	
			Yes	No
Enloe Hospital Medical Center (Trauma Center)	1531 Esplanade, Chico, CA 95926	530-332-7300	X	
Oroville Hospital	2767 Olive Highway, Oroville, CA 95966	530-533-8500		X
Immediate Care Medical Center Chico (Urgent Care)	376 Vallombrosa Ave., Chico CA 95926	530-891-1676		X
Oroville Comprehensive Care Walk-In Clinic	900 Oro Dam Blvd., Oroville, CA 95966	530-534-9183		X
Oroville Hospital Urgent Care Walk-In Clinic	2767 Olive Highway, Oroville, CA 95966 (Behind Oroville Hospital)	530-532-8542		X

8. Medical Emergency Procedures

<p>SOC MAJOR EMERGENCY: Supervisor to contact Safety Officer with patient complaint/condition and location.</p> <ul style="list-style-type: none"> • Supervisor contacts: <ol style="list-style-type: none"> 1. 911 if true emergency 2. Safety officer • Safety Officer contacts: <ol style="list-style-type: none"> 1. Operations 	<p style="text-align: center;"><u>INJURY REPORTING PROCEDURES</u></p> <p>CHIEF COMPLAINT _____</p> <p>LOCATION OF PATIENT _____</p> <p>TRANSPORT REQUEST BY: AIR__ GROUND__</p> <p>DIVISION _____ CREW _____</p> <p>POINT OF PICKUP _____</p> <p>LAT _____ LONG _____</p> <p>IS an EMT WITH THE PATIENT: YES ____ NO ____</p>
---	--

<ul style="list-style-type: none"> 2. SOC Director 3. Onsite Security 4. Patients Supervisor <ul style="list-style-type: none"> • Supervisor or designee will serve as point of contact and run medical emergency utilizing Phone, and or CALCORD for IWI and only for duration needed. • Communication Unit will clear command channel for emergency traffic as needed and only for time needed. <p><u>SOC MINOR EMERGENCY</u></p> <p>Contact Safety Officer with patient complaint/condition and location. Onsite Staff will respond to stabilize incident:</p> <ul style="list-style-type: none"> • Onsite Staff contacts: <ul style="list-style-type: none"> 1. Employees Supervisor 2. Safety 3. SOC Operations 4. SOC Director 5. SOC Plans 6. Comps/Claims 	<p>AGE _____</p> <p>SEX: MALE _____ FEMALE _____</p> <p style="text-align: center;">ALL EMERGENCIES</p> <p style="text-align: center;">Secure the area and identify witnesses for later investigation. Keep an accurate log of events.</p>	
<p style="text-align: center;">ICS 206 Medical Plan</p>	<p>9. Prepared by (Planning Support Unit Leader) Gina Avelar</p>	<p>Reviewed by (Safety Officer) Lucas Lambert</p>

ICS 206 MEDICAL PLAN TULARE LAC	1. Incident Name 2020 July/ August/September Statewide Fires	2. Date Prepared 10/15/2020	3. Time Prepared 1300 PDT	4. Operational Period 0800 PDT 10/16/2020 0800 PDT 10/18/2020		
	5. Incident Medical Aid Station					
	Medical Aid Stations	Locations	Paramedics on Site?			
			Yes	No		
First Aid Kit	1055 Henderson Avenue, Porterville, CA 93257		X			
6. Transportation						
Ambulance Services						
Name	Address	Phone	Paramedics on Site?			
Imperial Ambulance Services	22 North Cottage, Porterville, CA 93257	559-784-8500	Yes			
7. Medical Care						
Hospital						
Name	Address	Phone	Helipad			
			Yes	No		
Sierra View Medical Center	465 W Putnam Avenue, Porterville, CA 93257	559-324-4000		X		
Urgent Care						
Name	Address	Phone	Hours			
Sierra View Urgent Care	263 Pearson Drive #204, Porterville, CA 93257	559-791-3907	1600-2300 1100-2100	Mon-Fri Sat-Sun		
Visalia Bridge Walk-in Health Center	501 N. Bridge Street, Visalia, CA 93291	877-960-3426	0800-2200 0800-2000	Mon-Fri Sat-Sun		
8. Medical Emergency Procedures						
<ul style="list-style-type: none"> - Care for all minor injuries on site. - Stabilize all major injuries and call 9-1-1. - Transport using local ambulance service. - After emergency services are called, notify the Warning Center (916-845-8911). 						
ICS 206 Medical Plan	9. Prepared by (Planning Support Unit Leader) Gina Avelar		Reviewed by (Safety Officer) Lucas Lambert			

ICS 206 MEDICAL PLAN SHASTA LAC	1. Incident Name	2. Date Prepared	3. Time Prepared	4. Operational Period	
	2020 July/ August/September Statewide Fires	10/15/2020	1300 PDT	0800 PDT 10/16/2020 0800 PDT 10/18/2020	
	5. Incident Medical Aid Station				
	Medical Aid Stations	Locations		Paramedics on Site?	
			Yes	No	
First Aid Kit	1890 Briggs Street, Anderson, CA 96007				
6. Transportation					
Ambulance Services					
Name	Address	Phone	Paramedics on Site?		
American Medical Response	4451 Caterpillar Rd #1, Redding, CA 96003	530-246-9111	Yes		
		9-1-1			
7. Medical Care					
Hospital					
Name	Address	Phone	Helipad		
			Yes	No	
Mercy Medical Center Redding	2175 Rosaline Ave, Redding, CA 96001	530-225-6000	X		
Urgent Care					
Name	Address	Phone	Hours		
Pulse Urgent Care Center	100 E Cypress Ave, Redding, CA 96002	530-722-1111			
8. Medical Emergency Procedures					
<ul style="list-style-type: none"> - Care for all minor injuries on site. - Stabilize all major injuries and call 9-1-1. - Transport using local ambulance service. - After emergency services are called, notify the Warning Center (916-845-8911). 					
ICS 206 Medical Plan	9. Prepared by (Planning Support Unit Leader) Gina Avelar		Reviewed by (Safety Officer) Lucas Lambert		

SAFETY MESSAGE/PLAN (ICS 208)

1. Incident Name:

2020 July/August/September
Statewide Fires

2. Operational Period:

Date From: 10/16/2020 Date To: 10/18/2020
Time From: 0700 PDT Time To: 0700 PDT

3. Safety Message/Expanded Safety Message, Safety Plan, Site Safety Plan:

Heat Stress and Fatigue: Be alert for cumulative effects of fatigue and take breaks as necessary. Effects include slower reactions, lack of attention and forgetfulness. Dehydration contributes to fatigue. As fatigue increases, injuries tend to increase also. **Stay Hydrated!**

The California Department of Public Health (CDPH) released new guidance on [June 18, 2020](#) that mandates the use of cloth face coverings by the general public statewide when outside the home, with limited exceptions.

In an effort to limit further exposure, **if you are feeling ill, do not report to work.** Contact your supervisor and follow the information below to report your signs and symptoms.

In general, every person in California must wear a face covering when:

- Inside of, or in line to enter, any indoor public space;
- Obtaining services from the healthcare sector in settings including, but not limited to, a hospital, pharmacy, medical clinic, laboratory, physician or dental office, veterinary clinic, or blood bank; and
- Waiting for or riding on public transportation or paratransit or while in a taxi, private car service, or ride-sharing vehicle.
- Engaged in work, whether at the workplace or performing work off-site, when:
 - Interacting in-person with any member of the public;
 - Working in any space visited by members of the public, regardless of whether anyone from the public is present at the time;
 - Working in any space where food is prepared or packaged for sale or distribution to others;
 - Working in or walking through common areas, such as hallways, stairways, elevators, and parking facilities;
 - In any room or enclosed area where other people (except for members of the person's own household or residence) are present when unable to physically distance.
 - Driving or operating any public transportation or paratransit vehicle, taxi, or private car service or ride-sharing vehicle when passengers are present. When no passengers are present, face coverings are also strongly recommended.
 - While outdoors in public spaces when maintaining a physical distance of 6 feet from persons who are not members of the same household or residence is not feasible.

The following individuals are exempt from wearing a face covering:

- Persons with a medical condition, mental health condition, or disability that prevents wearing a face covering. This includes persons with a medical condition for whom wearing a face covering could obstruct breathing or who are unconscious, incapacitated, or otherwise unable to remove a face covering without assistance.
- Persons who are hearing impaired, or communicating with a person who is hearing impaired, where the ability to see the mouth is essential for communication.
- Persons for whom wearing a face covering would create a risk to the person related to their work, as determined by local, state, or federal regulators or workplace safety guidelines.
- Persons who are obtaining a service involving the nose or face for which temporary removal of the face covering is necessary to perform the service.
- Persons who are seated at a restaurant or other establishment that offers food or beverage service, while they are eating or drinking, provided that they are able to maintain a distance of at least six feet away from persons who are not members of the same household or residence.
- Persons who are engaged in outdoor work or recreation such as swimming, walking, hiking, bicycling, or running, when alone or with household members, and when they are able to maintain a distance of at least six feet from others.

NOTE:

- If you are State employees and have a condition that exempts you from wearing a mask, please contact Hilda Vargas for guidance on obtaining medical substantiation- Hilda.Vargas@CalOES.ca.gov, 916-845-8661. Please remember, people may have valid reasons for not wearing a face covering. If you have concerns about others not wearing face coverings, maintain physical distancing and raise the concern with Human Resources. For more specifics, please refer to the new [Guidance for the Use of Face Coverings](#).
- **IF you are a FEMA employee and unable to wear a cloth face covering, submit a reasonable accommodation request to your supervisor for: (1) an alternative face covering to be provided by FEMA, or (2) continued telework. Both requests are subject to adjudication through normal reasonable accommodation processes.** Responding to COVID-19 can take an emotional toll on you. Contact FEMA [Employee Assistance Program \(EAP\)](#) for free confidential counseling 24 hours a day, seven days a week. Toll Free: 800-222-0364 www.FOH4you.com

Misc.

As mentioned previously, Facilities has provided one-time use masks to Cal OES facilities and supervisors that have requested them. In order to ensure all locations maintain a suitable inventory, Facilities will continue to provide an inventory of masks for staff use.

Immediately report to your supervisor if you feel ill.

- Maintain social distancing of (6) feet or greater, including around tables, teleconference areas, and work areas.
- Practice proper hand hygiene - Wash your hands with soap and water for at least 20 seconds.
- Review and understand the Health and Safety Plan specific to COVID-19 incident.
- Immediately report to your supervisor if you feel ill.
- Be familiar with the building emergency plans, evacuation routes, shelter-in-place plans, and AED.
- Critical Incident stress during these uncertain times can effect anyone at any time. Peer counselors are available as a resource 24 hours a day @ (916) 445-4337 or COVIDPeerSupport@SOC.CalOES.ca.gov.
- Ensure good communication and accountability plans are established and followed by all staff.
- The policy regarding bringing food into the State Operations Center has been updated in the Health and Safety Procedure.

Symptoms of Covid-19 (per CDPH) **Please, do not come to work if you are sick.**

- Fever, Chills, Cough, Shortness of breath, Fatigue, Muscle or body aches, Headache, New loss of taste or smell, Sore throat, Congestion or Runny Nose, Nausea, Vomiting or Diarrhea.

This general COVID-19 response safety message applies starting Fri 7/10/20 and across all Operational Periods. It will be revised as needed.

- All CDPH employees, contractors, and trainees taking part in field visits or other response activities will not place themselves, or allow others to be placed in a hazardous situation.
- If you ever feel that you and/or your co-workers are in a danger, immediately remove yourself and co-workers to a safe place.
- Follow CDPH guidance for PPE, face masks, and cloth face coverings.
- Remain mindful of changing surroundings, don't be caught off guard.
- Mental and emotional stress can lead to accidents; watch out for each other in these trying times.
- Ensure you have rostered and received a deployment-specific safety briefing from the Safety Officer.
- Identify the nearest medical facility in case of emergency.

Observe safety procedures as required in all facilities:

FIELD SUPPLIES

- Hand sanitizer; Cleaning/disinfecting wipes
- Adequate supply of PPE
- Supplies and methods to decontaminate or dispose of PPE
- Masks and/or cloth face coverings
- Change of clothes/shoes or an outer layer that is easy to remove before getting into the car, as necessary

TRAVEL

***Air travel

- Sit where you have entire row to yourself, if possible; additionally, if at all possible have 2 rows in front and 2 rows in back clear
- Wipe down the tray, armrests, and other surfaces
- Clean hands before eating or drinking

***Public transportation

- Avoid touching surfaces as much as possible
- Wash hands or use hand sanitizer after touching ticket dispensers, elevator buttons, etc.

***Taxi/Rideshare (Uber, Lyft)

- Avoid airport multi-passenger van transportation as much as possible
- Avoid sitting close to other passengers and avoid sitting up front with the driver
- Make sure the driver and other passengers wear face coverings
- Avoid getting into a car where the driver is not wearing a face covering
- Avoid handling cash, if possible

***Driving

- Observe the speed limit, drive with headlights on, wear your seatbelt
- Do not leave belongings in plain view in the vehicle; lock the car

PERSONAL SAFETY

- Do not shake hands
- Touch as little as possible
- Practice physical distancing, maintain 6 feet distance from others, as possible
- Avoid touching your face
- Bring and wear PPE, face masks, or cloth face coverings as required
- Wash hands as often as practicable
- If visiting facilities outside of an LHD office, do not eat, drink, smoke or apply cosmetics (even lip balm) at the site
- Be aware of other personal safety considerations: safe driving, injuries, violent encounters, inter-personal conflicts due to stressful situations.

4. Site Safety Plan Required? Yes No

Approved Site Safety Plan(s) Located At:

5. Prepared by: Name: Lucas Lambert Position/Title: Safety Officer Signature:

ICS 208

IAP Page _____

Date/Time: 10/15/2020 0900

GENERAL MESSAGE (FEMA ICS FORM 213)

TO: All Hands

POSITION:

FROM: Wayne Baskin

POSITION: Safety Officer

SUBJECT: Employee Advisory – FEMA Forward Framework - COVID Preventative Measures **DATE/TIME:** 09/28/2020 1800 PST

MESSAGE:

Employee Advisory – FEMA Forward Framework and COVID Preventative Measures
FEMA Forward Framework and COVID Preventative Measures

This advisory is a reminder to all employees that FEMA has established an agency-wide FEMA Forward Framework outlining the operational requirements of all FEMA controlled spaces including Headquarters, Regional Offices, Joint Field Offices, Disaster Recovery Centers and any other physical locations where FEMA holds a Lease or License Use Agreement.

The FEMA Forward Framework mandates the following requirements be fully implemented:

- **Cleaning Contract:** Must have a cleaning contract in place to clean the facility (or portion following a confirmed or suspected COVID-19 case) with special attention to frequently touched surfaces (doorknobs, elevator controls, etc.)
- **Hygiene Supplies:** Must ensure have (and can acquire) sufficient hygiene supplies, including but not limited to hand sanitizer, hand soap, paper towels, toilet paper, and disinfectant wipes.
- **Enhanced Screening:** Must follow established enhanced screening criteria and protocols to include implementation of temperature checks to prohibit individuals with an elevated temperature (>100.4°F) from entering the facility.
- **Proactive Communications:** Must have established effective communications for all FEMA employees returning to the facility.
- **Social Distancing:** Must establish social distancing protocols of at least 6' for workspaces and common areas.
- **Cloth Face Coverings:** Employees are required to wear cloth face coverings in all common areas including entrances, elevators, kitchens, bathrooms and conference rooms, and when it is not possible to maintain at least 6' of social distancing. Cloth face coverings will be provided by FEMA.

In addition to the FEMA Forward Framework, each employee has an individual responsibility to protect themselves and their co-workers. COVID prevention requires a team approach with each individual playing their part.

Remember to regularly:

- **Monitoring your health daily;** if you feel sick and/or develop symptoms, stay home or in your hotel and contact your supervisor.
- **Maintain good social distance (about 6 feet).** This is very important in preventing the spread of COVID-19.
- **Wear a cloth face covering when you are in FEMA Facilities,** where mandated by state/local ordinances and any time when other people may get too close (such as when traveling).
- **Cover your cough or sneeze with a tissue,** then throw the tissue in the trash. Or use the crook of your arm (bending the elbow).
- **Wash your hands often with soap and water.** If soap and water are not available, use a hand sanitizer that contains at least 60% alcohol.
- **Avoid touching your eyes, nose, and mouth with unwashed hands.**
- **Routinely clean and disinfect your personal frequently touched surfaces** such as laptops, cell phones, and PIV cards.
- **Maintain Situational Awareness** by reviewing related FEMA documents, briefing materials and by visiting the FEMA COVID Website.

If unable to wear a cloth face covering, submit a reasonable accommodation request to their supervisor for: (1) an alternative face covering to be provided by FEMA, or (2) continued telework. Both requests are subject to adjudication through normal reasonable accommodation processes.

The intended cumulative effect of all of these protective measures is to create a work environment with the lowest possible risk of COVID exposure.

Responding to COVID-19 can take an emotional toll on you. Contact your Employee Assistance Program (EAP) for free confidential counseling 24 hours a day, seven days a week. Toll Free: 800-222-0364 www.FOH4You.com

Thank you for your flexibility and support to keep our colleagues and workplace safe, as well as your commitment to carry our critical mission forward during this challenging time.

SIGNATURE: Wayne Baskin

POSITION: Safety Officer

REPLY:

N/A

DATE/TIME:

SIGNATURE/POSITION: N/A

FEMA ICS FORM 230 INTERNAL DAILY MEETING SCHEDULE		1. FEMA Disaster Number: FEMA-4558-DR	2. Date/Time Prepared: 10/15/2020 1530 PDT
3. Operational Period (Date/Time): 10/16/2020 0700 PDT to 10/18/2020 0700 PDT			
Time / Time Zone	Meeting Name	Purpose / Attendees	Meeting Location
Friday 10/16/2020			
0745 PDT	FCO Stand Up	Monday - Saturday (Recurring)	Meeting Information TBD
0800 PDT	Daily FEMA Operational Briefing	Brief personnel regarding Daily Situational Report Operations, IA, DSA, Logistics, Mitigation, IGA	By Phone Conference Call Phone number 1-800-320-4330 PIN: 201395#
0900 PDT	State Ops Briefing	Monday - Wednesday - Friday (Recurring) Brief on shortfalls, gaps, and forecasting week of operations. Kim Bowman, State Ops 916-539-5613 ContractorKim.Bowman@CalOES.ca.gov	Meeting Information TBD Invite Only
0930 PDT	State-Federal IA Coordination Meeting	Monday - Friday (Recurring) Coordination call to discuss any IA updates: LAC's, PDA's, Housing, DCM, SBA, etc and reports or action items that are necessary. Nicole.Benson@CalOES.ca.gov	Invite Only POC: Nicole Benson
1030 PDT	Other	ALL SITUATIONAL REPORTS DUE TO JFO SITSTAT	
1400 PDT	State/FEMA Leadership Coordination Meeting	Monday and Friday Discuss coordination and collaboration for DR-4558. Please note this meeting request is intended for Section Chiefs, Task Force Leads and other Leadership only.	Hosted on MS Teams via invite
1500 PDT	Debris Task Force Meeting	Monday, Wednesday, and Friday (Recurring) To coordinate across debris removal of stakeholders and discuss due outs.	Microsoft Teams 415-906-4037 ID: 894042440 POC Cole Glenwright
1600 PDT	LAC Coordination Call	Monday - Saturday (Recurring) LAC Coordinators check in on LAC Liaisons CalOES Summer.Wright@CalOES.ca.gov	Invite Only POC: Summer Wright
1730 PDT	FCO Sync Up	Monday - Saturday (Recurring) FEMA Command Staff and General Staff	Hosted on MS Teams via invite
Saturday 10/17/2020			
0745 PDT	FCO Stand Up	Monday - Saturday (Recurring)	Meeting Information TBD
0800 PDT	Daily FEMA Operations Division Briefing	Brief personnel regarding Daily Situational Report Operations, IA, DSA, Logistics, Mitigation, IGA	By Phone Conference Call Phone number 1-800-320-4330 PIN: 543445#
0800 PDT	Objectives Meeting	Thursday and Saturday (Week of 10/12 Only) Review existing objectives for possible changes. Nicole Erlichman, State Plans 916-291-7264 Nicole.Erlichman@CalOES.ca.gov	JFO Yosemite Room https://fema.zoomgov.com/j/1602367051 Passcode: 4558 Call-in: 1-646-828-7666, 1602367051#
1000 PDT	Command and General Staff Meeting	Thursday and Saturday (Week of 10/12 Only) Review approved incident objectives. Provide, share important information and immediate direction. UCG, Command and General Staff, Situation Unit Leader, designated and invited guests. Nicole Erlichman, State Plans 916-539-5613 Nicole.Erlichman@CalOES.ca.gov	JFO Yosemite Room https://fema.zoomgov.com/j/1602367051 Passcode: 4558 Call-In: 16468287666, 1602367051#
1030 PDT	Other	ALL SITUATIONAL REPORTS DUE TO JFO SITSTAT	
1030 PDT	Other	ALL STAFFING PATTERNS / MEETING UPDATES DUE TO JFO PLANS	

1230 PDT	Operations Tactics Meeting	Thursday and Saturday (Week of 10/12 Only) Review and finalize the draft Operational Planning Worksheets (FEMA-ICS 215). All Operations personnel, ESF leads, Community Relations Lead responsible for Incident Action Planning, RESL, LSC, and SOFR.	Meeting Information TBD
1600 PDT	LAC Coordination Call	Monday - Saturday (Recurring) LAC Coordinators check in on LAC Liaisons CalOES Summer.Wright@CalOES.ca.gov	Invite Only POC: Summer Wright
1630 PDT	Planning Meeting	Thursday and Saturday (Week of 10/12 Only) Approve the IAP for the next operational period UCG, Command and General Staff, SITL, designated and invited guests. Nicole Erlichman, State Plans 916-291-7264 Nicole.Erlichman@CalOES.ca.gov	JFO Yosemite Room https://fema.zoomgov.com/j/1602367051 : 602367051: Passcode: 4558 Call-In: 16468287666, 1602367051#
1730 PDT	FCO Sync Up	Monday - Saturday (Recurring) FEMA Command Staff and General Staff	Hosted on MS Teams via invite
4. Prepared By: Gina Avelar, PSUL		5. Reviewed By: Nicole Erlichman, PSC	

FEMA ICS FORM 230 EXTERNAL DAILY MEETING SCHEDULE		1. FEMA Disaster Number: FEMA-4558-DR	2. Date/Time Prepared: 10/15/2020 0900 PDT
3. Operational Period (Date/Time): 10/16/2020 0700 PDT to 10/18/2020 0700 PDT			
Time / Time Zone	Meeting Name	Purpose / Attendees	Meeting Location
Friday 10/16/2020			
N/A	N/A	N/A	N/A
Saturday 10/17/2020			
N/A	N/A	N/A	N/A
4. Prepared By: Gina Avelar, PSUL		5. Reviewed By: Nicole Erlichman, PSC	