

# 201908 Tropical Storm Dorian Data Sources

## Geospatial Information and Remotely Sensed Imagery Products

---

August-29-2019

### Catalog Info

Hazards Data Distribution System (HDDS)

Select Event: '201908\_Tropical\_Storm\_Dorian' -> click on '+' and then 'Search'

Download Shapefiles for image footprints

[https://hddsexplorer.usgs.gov/data/list/disaster/201908\\_Tropical\\_Storm\\_Dorian/shapefiles/index](https://hddsexplorer.usgs.gov/data/list/disaster/201908_Tropical_Storm_Dorian/shapefiles/index)

More information about HDDS: <http://hdds.usgs.gov/hazards-data-distribution-system-hdds>

**HDDS Emergency Operations - Collection Management Tool** (area of interest for disaster imagery collections) *Request new disaster related imagery here.*

<http://cmt.usgs.gov/>

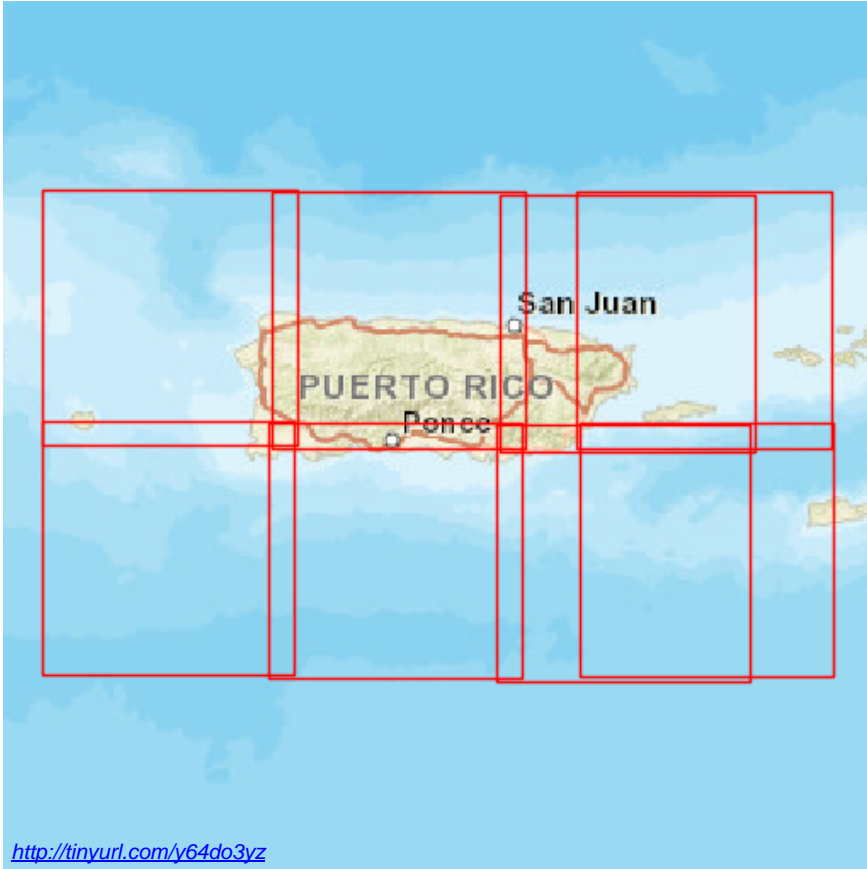
### HDDS Footprints Legend:

We highlight new image footprints as either **red** or **blue**, where **red** reflects the newest footprints from the last 48 hours and **blue** reflects footprints from the last 7 days.

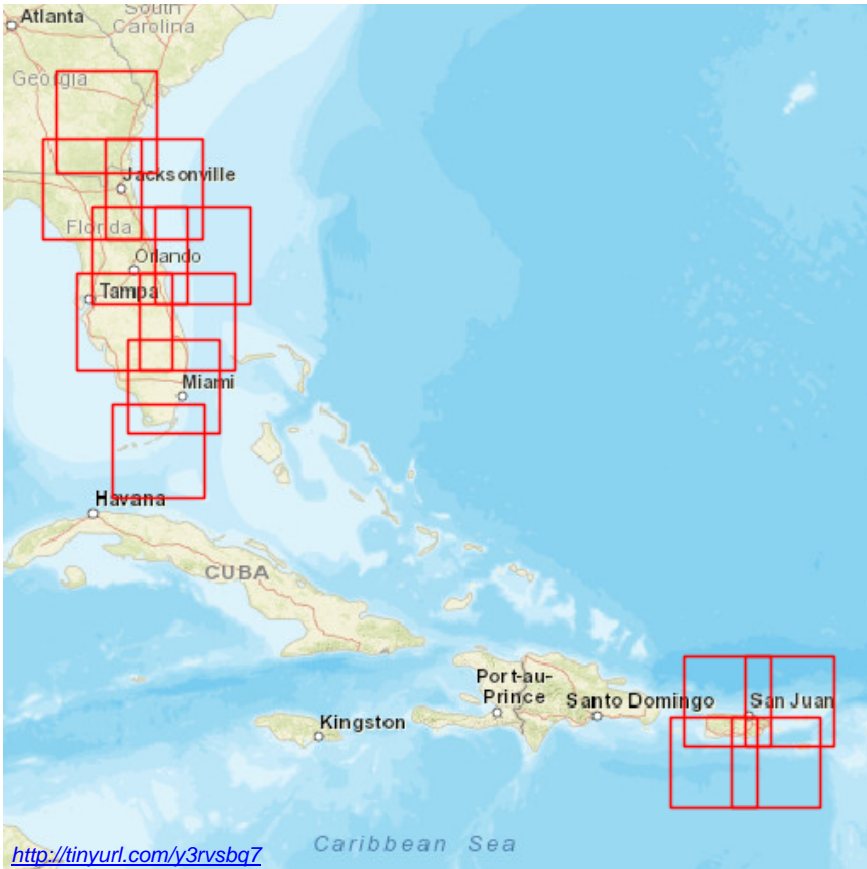
 New footprints from the past 48 hours

 Footprints from the last 7 days

Platform: **SENTINEL** scenes from the last 48 hours (in red) and from the last 7 days (in blue)



Platform: **LANDSAT** scenes from the last 48 hours (in red) and from the last 7 days (in blue)



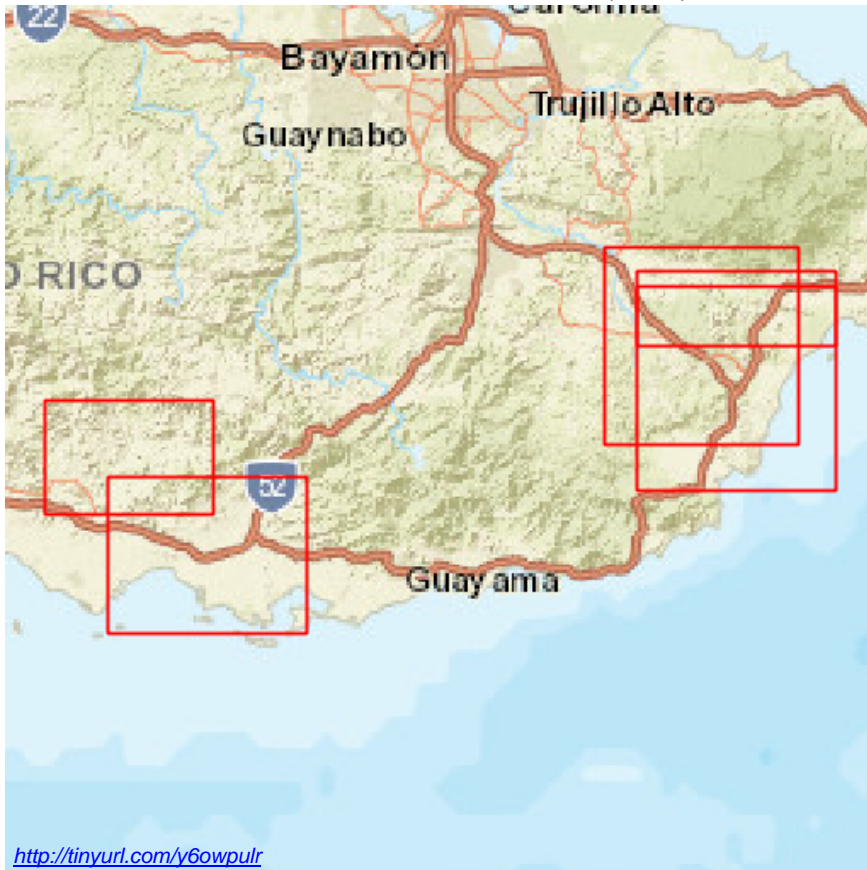
## HDDS Restricted

If you have not registered on either EarthExplorer or HDDS, click the register button in the top right corner of the screen and go thru the registration process. Once registered, you will have access to EarthExplorer and HDDS download capabilities. The first time you attempt to download restricted imagery, you will need to fill out an access request form for that event. Click on 'Access' (upper right of HDDS screen), then select 'To request access to restricted data click here'. Select event from menu. Once granted access, you can download restricted imagery. (note: in most cases the restricted area contains licensed imagery, not all requests can be granted.)

### Request access:

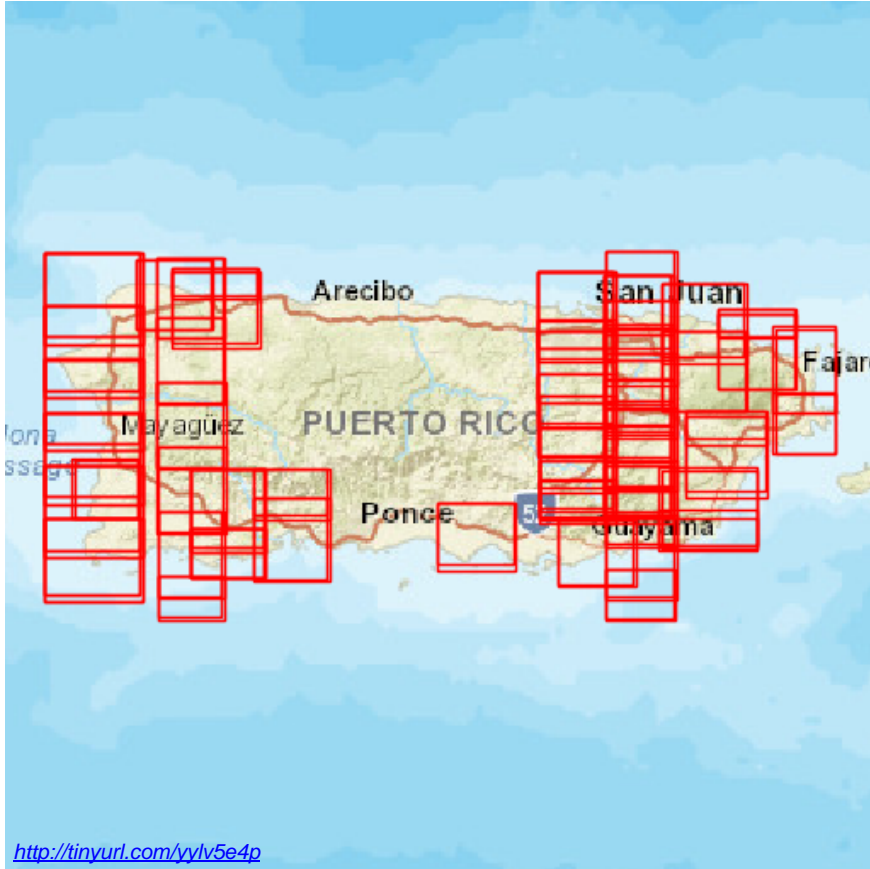
[https://hddsexplorer.usgs.gov/access/request?event=201908\\_Tropical\\_Storm\\_Dorian](https://hddsexplorer.usgs.gov/access/request?event=201908_Tropical_Storm_Dorian)

Platform: **GEOEYE** scenes from the last 48 hours (in red) and from the last 7 days (in blue)



<http://tinyurl.com/y6owpulr>

Platform: **WORLDVIEW** scenes from the last 48 hours (in red) and from the last 7 days (in blue)



<http://tinyurl.com/yylv5e4p>

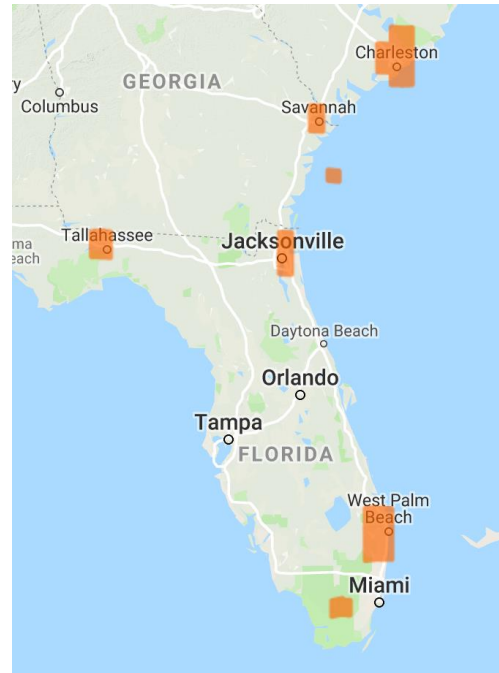
End HDDS

---

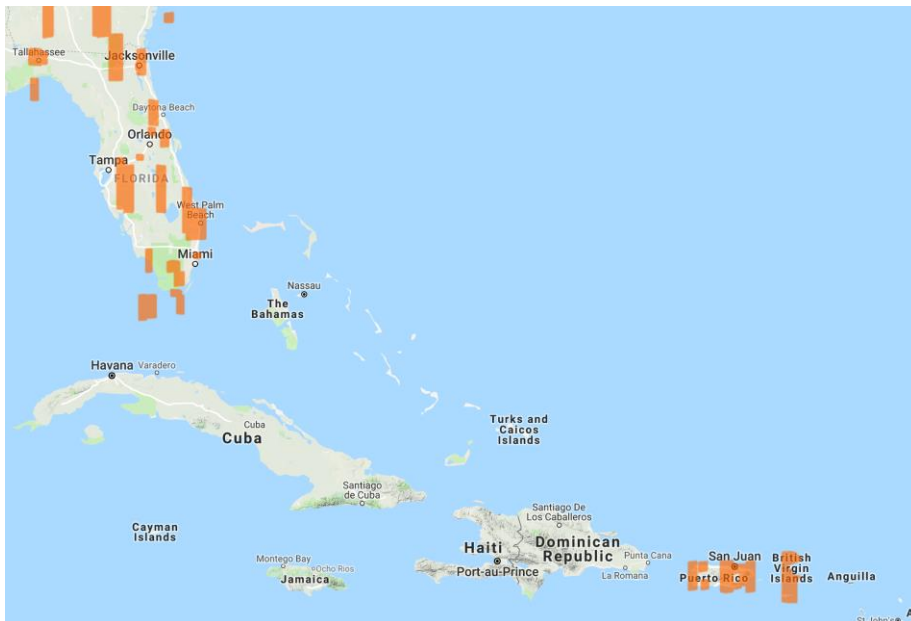
## Digital Globe Imagery

Digital Globe imagery is available orthorectified in the NGA funded EnhancedView Web Service. Users with .gov or .mil emails can self-register. <https://evwhs.digitalglobe.com/myDigitalGlobe/>

### Last 72 Hours



### Last 30 Days



## Eagle Vision scenes

<http://dev.evr2est.us/scenes/table> and <http://evr2est.us/>

No New Scenes Yet

### **Additional map services and journals:**

*\*\*\*Note: Depending on your network security requirements, you might not be able to click on the links below, instead you will need to copy+paste into a new browser window.*

#### **FEMA HQ Hurricane Incident Journal**

<https://fema.maps.arcgis.com/apps/MapJournal/index.html?appid=97f53eb1c8724609ac6a0b1ae861f9b5>

---

#### **[NEW] NHC “blended Surge” products for FL:**

[https://disasters.geoplatform.gov/publicdata/Region4/Meow/NHC\\_Blended\\_Meows/](https://disasters.geoplatform.gov/publicdata/Region4/Meow/NHC_Blended_Meows/)

##### ***NHC Description:***

Attached is a .zip file with a GeoTIFF of a set of SLOSH MEOW inundation grids merged into one file. The set includes 2 SLOSH grids merged (blended) using the following MEOW scenarios cat 4 moving towards wnw/w/nw at (jx3 5 and 15 mph, sf1 at 5 and 10 mph). The data is in 1 foot bins similar to the HVX.

#### **[NEW] Hurricane Dorian PR Incident Journal:**

<https://fema.maps.arcgis.com/apps/MapSeries/index.html?appid=9fe481f803244088a737f90050efa4f1>

#### **[NEW] NASA Products for Hurricane Dorian 2019:**

<https://maps.disasters.nasa.gov/arcgis/apps/MinimalGallery/index.html?appid=d9341d69d25447538cea8aa2dda47d25#>

#### **[NEW] Census demographic and economic data on Puerto Rico by municipio and Florida by county**

<https://www.census.gov/topics/preparedness/events/hurricanes/dorian.html>

#### **[NEW] FEMA Crowdsourcing Unit Map Journal**

<https://arcg.is/0vXuKn>

#### **[NEW] FEMA Crowdsourced Photo Storymap**

<https://arcg.is/1Kf5XS>

#### **[NEW] US Disaster’s Community in GeoNet**

<https://community.esri.com/thread/239194-topical-storm-dorian>

#### **[NEW] NOAA now has GOES tile services that update every 10 minutes:**

- Infrared: <https://www.arcgis.com/home/item.html?id=4e681ff69e0e4b90866bb6a2e03db24a>
- Colorized: <https://www.arcgis.com/home/item.html?id=8e93e0f942ae4d54a8d089e3cd5d2774>

#### **[NEW] HHS emPOWER**

map: <https://empowermap.hhs.gov/>

rest service: [HHS\\_emPOWER\\_REST\\_Service\\_Public](https://hhs-emPOWER.REST.Service.Public)

#### **VIIRS flood water fraction updates will be posted here:**

<https://fema.maps.arcgis.com/apps/webappviewer/index.html?id=8332b01063a949399ba846e93e6ee26f>

#### **FEMA Public Data**

[http://disasters.geoplatform.gov/publicdata/NationalDisasters/2019/TropicalStormBarry\\_July2019/](http://disasters.geoplatform.gov/publicdata/NationalDisasters/2019/TropicalStormBarry_July2019/)

**Send comments, additions, and corrections to:**

Rebecca Kollmeyer

Federal Emergency Management Agency (FEMA) (New Light Technologies, Inc. (CTR))

[Rebecca.kollmeyer@associates.fema.dhs.gov](mailto:Rebecca.kollmeyer@associates.fema.dhs.gov)

If you would like to be on the distribution list to receive these documents, you can sign up here:

*Remote Sensing and GIS Data for Disaster Community (RSGDC) Data Source Updates:*

[https://public.govdelivery.com/accounts/USDHSFEMA/subscriber/new?topic\\_id=USDHSFEMA\\_1367](https://public.govdelivery.com/accounts/USDHSFEMA/subscriber/new?topic_id=USDHSFEMA_1367)