



FEMA

Daily Operations Briefing

Friday, October 26, 2018

8:30 a.m. EDT

Significant Activity – Oct 25-26



FEMA

Significant Events: Super Typhoon Yutu

Tropical Activity:

- Atlantic – Disturbance 1: High (90%)
- Eastern Pacific – Disturbance 1: Low (20%)
- Central Pacific – No new tropical cyclones expected during the next five days
- Western Pacific – Super Typhoon Yutu (CAT 5)

Significant Weather:

- Severe thunderstorms possible – coastal Carolinas
- Freezing rain possible – Northeast
- Heavy rainfall – coastal Mid-Atlantic
- Elevated fire weather – southern CA

Declaration Activity:

- Request for Expedited Major Disaster Declaration – Commonwealth of Northern Mariana Islands (Typhoon Yutu)
- Request for Major Disaster Declaration – Alabama (Hurricane Michael)
- Amendment No. 2 to FEMA-4400-DR-GA (adds 7 counties for IA)
- Amendment No. 9 to FEMA-4393-DR-NC (adds 3 counties for IA)

Tropical Cyclone Yutu

CNMI



FEMA

Safety and Security:

- Saipan: 1 confirmed fatality
- CNMI Attorney General issued consumer alert on price gouging related to post-storm services

Food, Water, Sheltering:

- Establishing 5 points of distribution (PODs) on Saipan to provide water and humanitarian daily rations (HDRs) on October 28
- Shelters/Occupants:
 - Saipan 12 / 893 (+340), 6 shelters at capacity; Tinian 2 (-1) / 34 (-11); Rota 2 / 79

Health and Medical:

- CNMI: Public Health Emergency declared to release resources to respond to disaster
- Saipan: the only hospital on the island is operational on generator power with 4 days fuel supply; dialysis center has resumed operations
- Tinian: the only medical facility on the island has infrastructure compromised but is operational on generator power with 3 days fuel supply
- Rota: Rota Health Center operational on generator power, no reported damaged
- HHS deploying 1 LNO, 1 Incident Management Team Logistics Officer, and Health and Medical Task Force-Oahu

Energy:

- CNMI: 100% of customers without electric grid power (19k on Saipan, 1k on Tinian, 1k on Rota)
- Saipan: 9 out of 9 power feeders are down; 2 out of 3 power generating plants require drying and testing before bringing back on-line, 1 plant available for service; island is relying on generator power
- Tinian: 4 out of 4 power feeders down; power plant compromised, distribution system completely destroyed; island is relying on generators
- Rota: 3 out of 3 power feeders are online
- Deploying generators to Saipan from DC Guam
- CNMI: Commonwealth Utilities Corporation estimates that 21 days of fuel is currently available on the islands; CNMI relies on petroleum products for nearly all energy needs, supplied once a week by tanker through Saipan port, Tinian and Rota by barge

Communication:

- CNMI: Significant damage to cell towers throughout the islands; telecommunications services have only one provider
- Saipan: 11 of 11 cell towers on generator power, fuel plan is being executed by CNMI
- Exchange connection between islands is on generator power with 96 hour capacity
- CNMI Public Safety Radio System is online

Transportation:

- Ports: Saipan and Tinian remain closed pending assessment; all ports in Rota re-opened
- Airports:
 - Saipan: significant damage, most flights cancelled, humanitarian and military flights only; suitcase tower needed to facilitate air traffic control is operational
 - Tinian: open with flights scheduled to begin October 27
 - Rota: open
- Road debris assessment and clearance ongoing on Saipan and Rota; assessment team scheduled to begin work on Tinian on October 27

Hazardous Waste:

- Solid Waste facility in Puerto Rico, Saipan open for green waste, metals, and white good disposal
- As Gonno facility in Saipan expected to re-open on October 27; Marpi transfer station in Saipan requires removal of lines and power poles before re-opening

State/Local Response

- CNMI EOC at Full Activation (24/7), COR I

FEMA HQ/Federal Response

- Emergency Declaration FEMA-3408-EM-CNMI approved October 23
- FEMA Region IX RWC at Steady State, continues to monitor
 - FEMA Region IX IMAT-2 and select ESFs deployed to Saipan
 - LNOs in Guam, Rota and Saipan
- FEMA Region VII IMAT deployed to CNMI
- FEMA NRCC Response Operations Cell (ROC) activated (24/7)
- FEMA HQ ISB team and MERS assets deployed
- HHS: Federal Health Coordinating Officer, DMAT, and IMT deployed
- USACE: 249th Engineer BN 'Prime Power' deployed

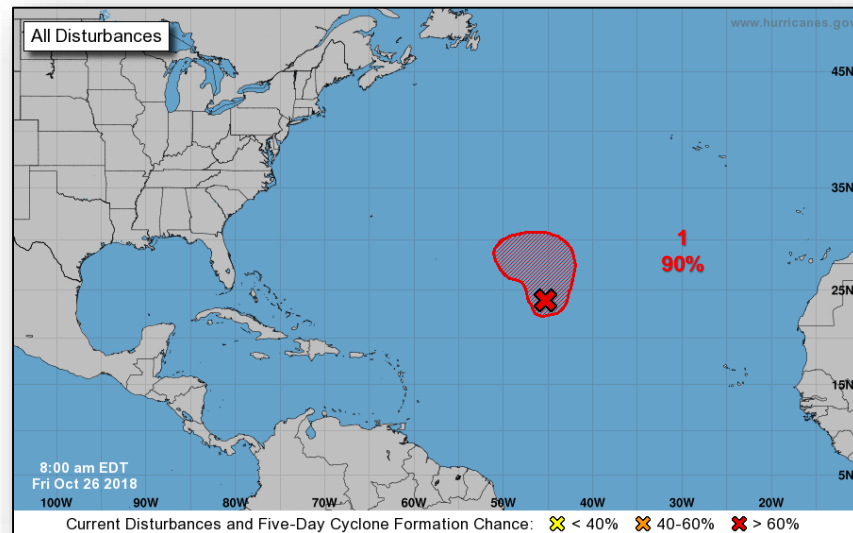
Tropical Outlook – Atlantic



FEMA

Disturbance 1 (as of 8:00 a.m. EDT)

- 1200 miles ENE of northern Leeward Islands
- A tropical or subtropical storm is likely to form later today or tonight
- Formation chance through 48 hours: High (90%)
- Formation chance through 5 days: High (90%)



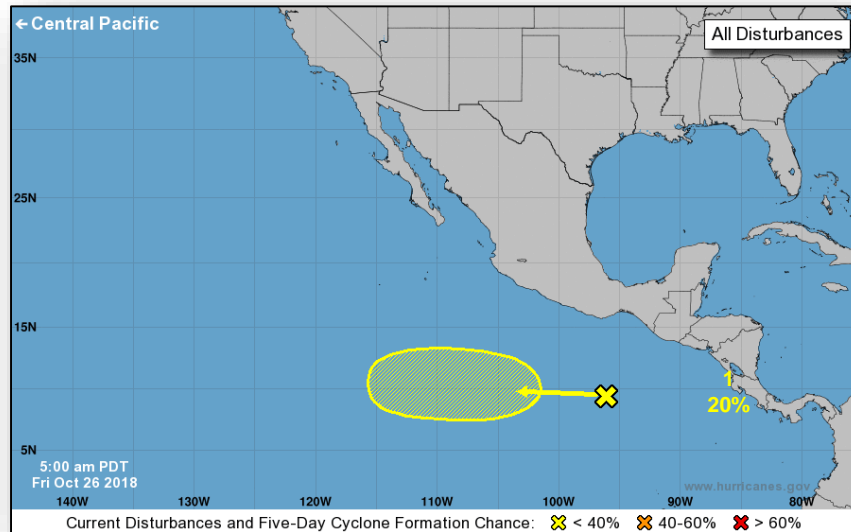
Tropical Outlook – Eastern Pacific



FEMA

Disturbance 1 (as of 8:00 a.m. EDT)

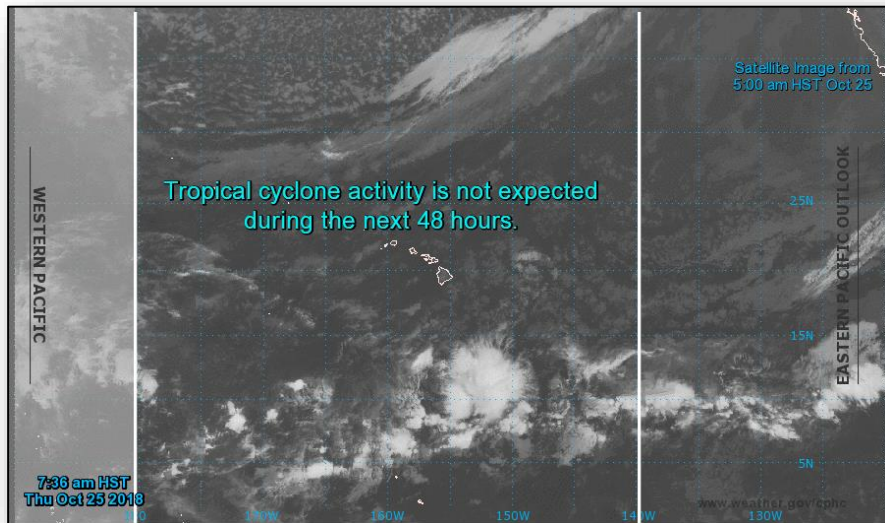
- Several hundred miles S of Gulf of Tehuantepec
- Some gradual development is possible early next week
- Formation chance through 48 hours: Low (near 0%)
- Formation chance through 5 days: Low (20%)



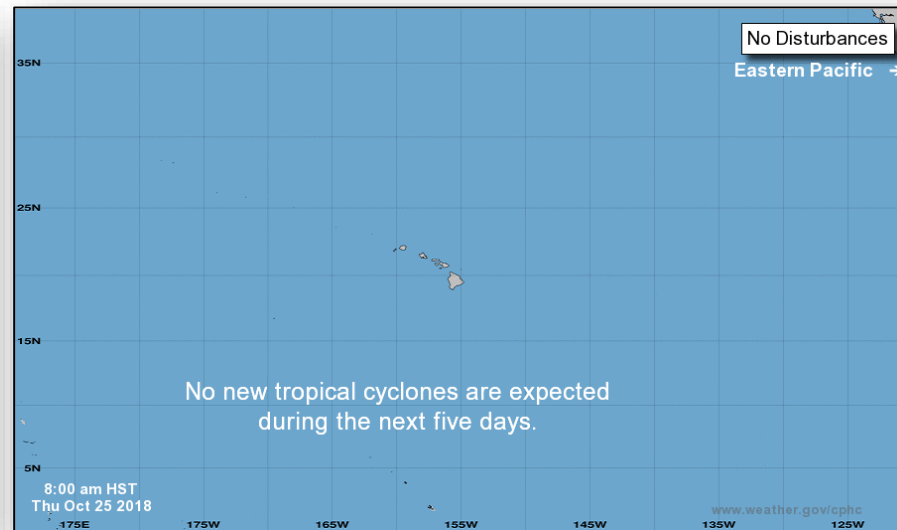
Tropical Outlook – Central Pacific



FEMA



48 Hour Outlook



5 Day Outlook

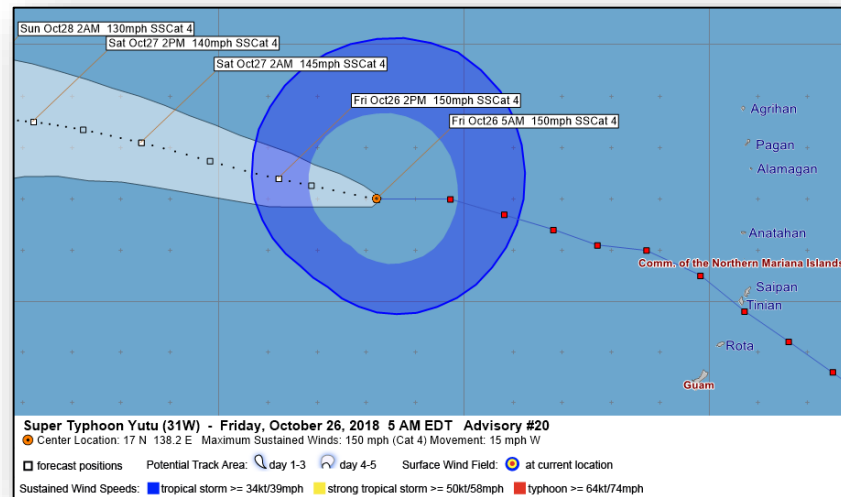
Tropical Outlook – Western Pacific



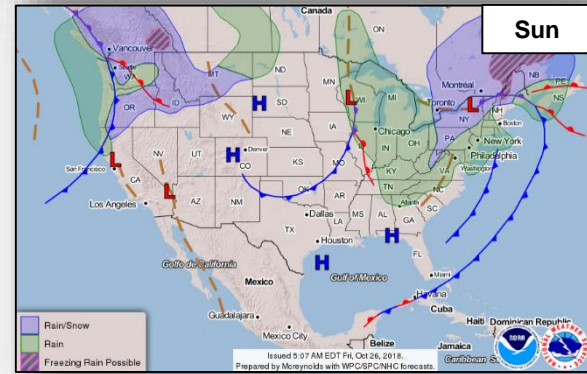
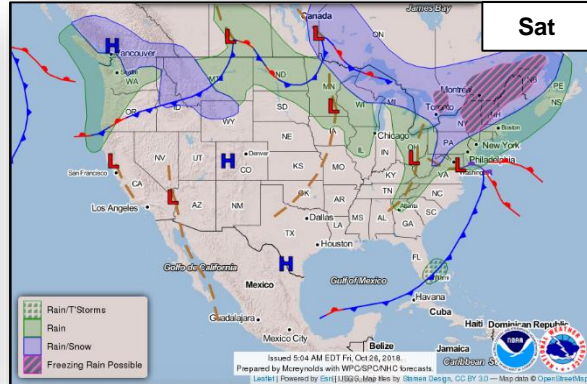
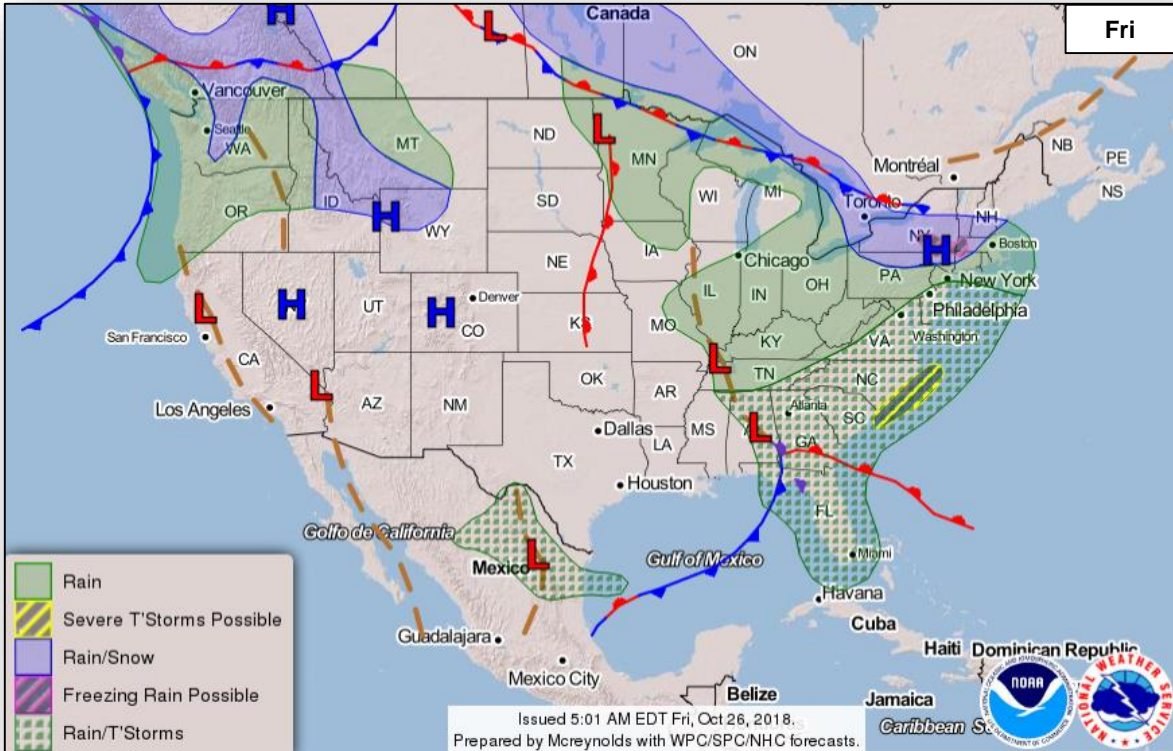
FEMA

Super Typhoon Yutu (CAT 4) (Advisory #20 as of 5:00 a.m. EDT) **FINAL**

- 510 miles WNW of Tinian, 500 miles WNW of Guam
- Moving W at 15 mph
- Maximum sustained winds 150 mph
- Typhoon-force winds extend 70 miles
- Tropical storm force winds extend 230 miles
- All typhoon watches and warnings have been cancelled



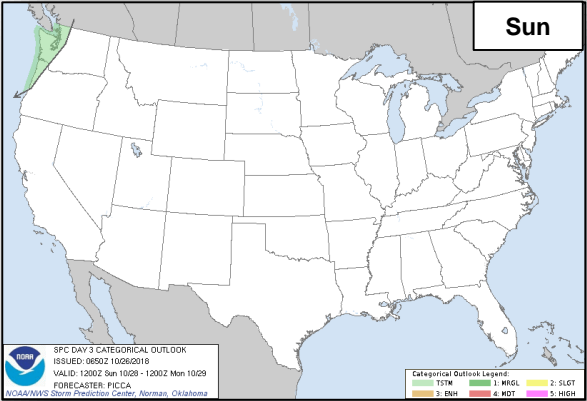
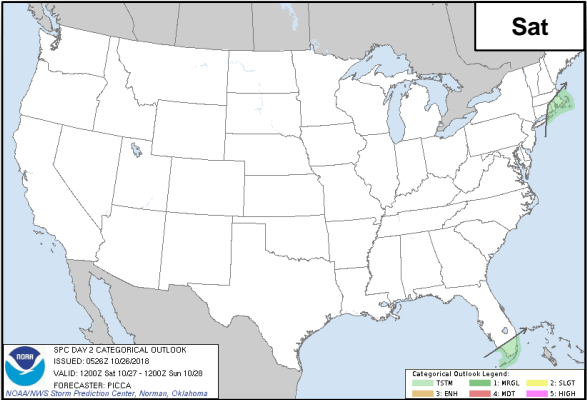
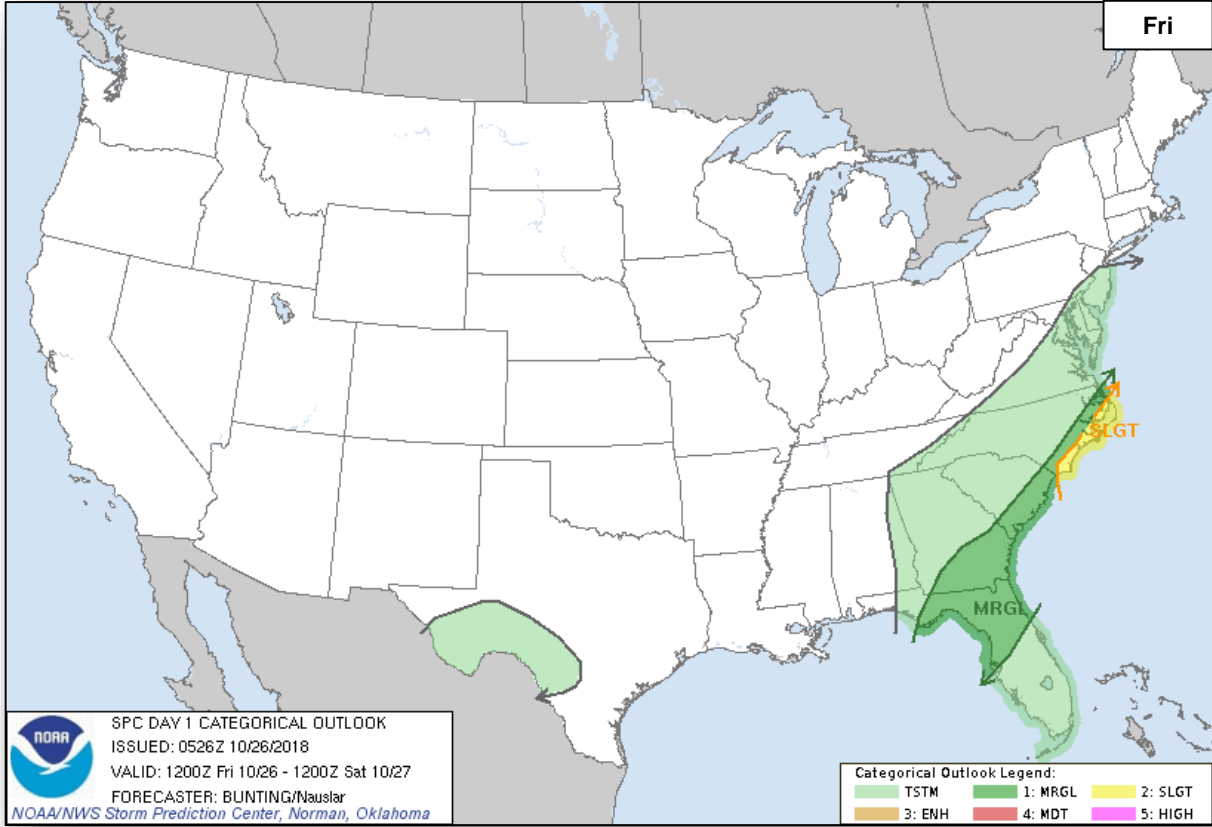
National Weather Forecast



Severe Weather Outlook



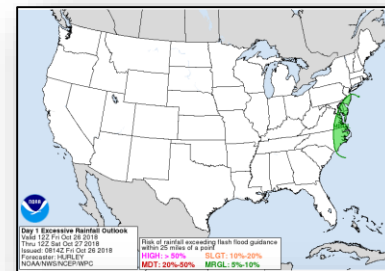
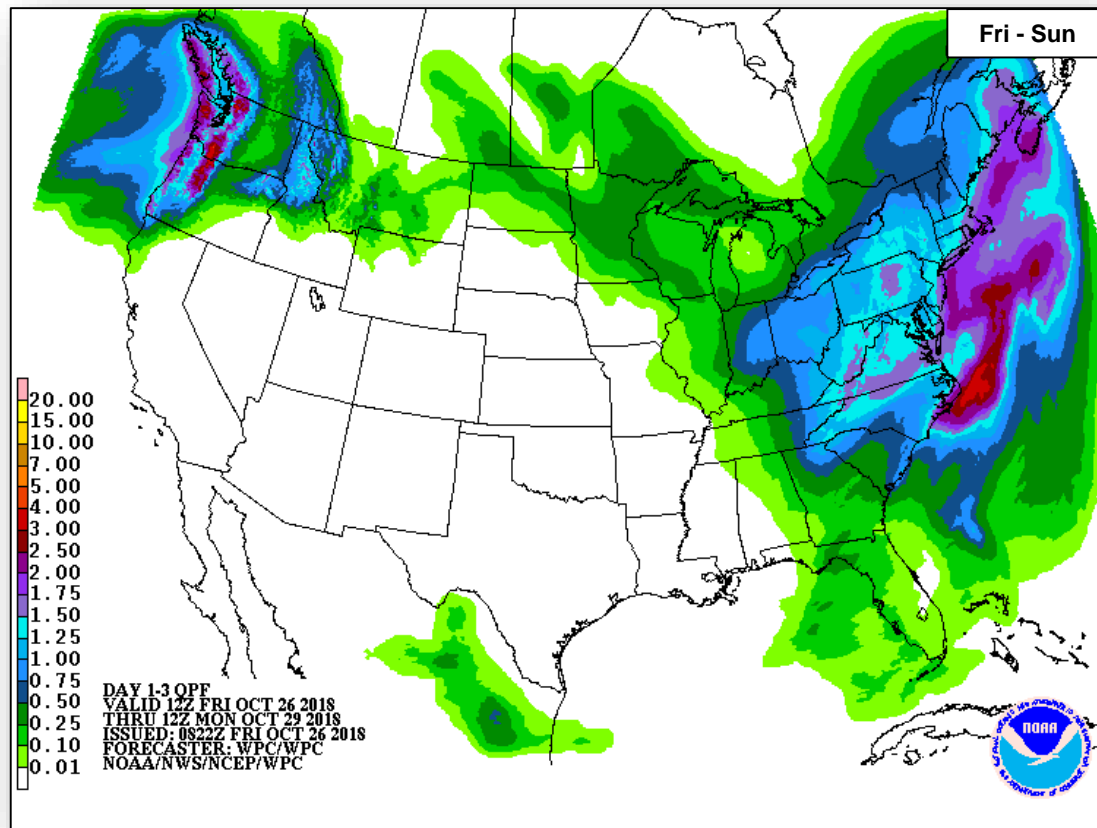
FEMA



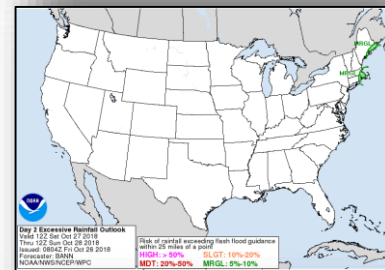
Precipitation / Excessive Rainfall Forecast



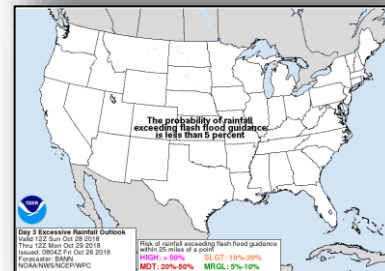
FEMA



Fri



Sat

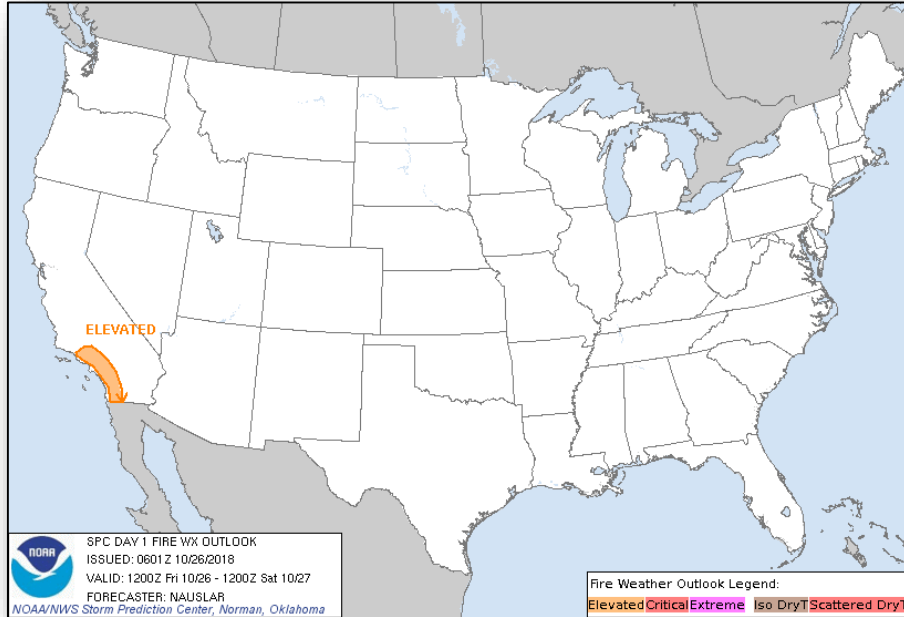


Sun

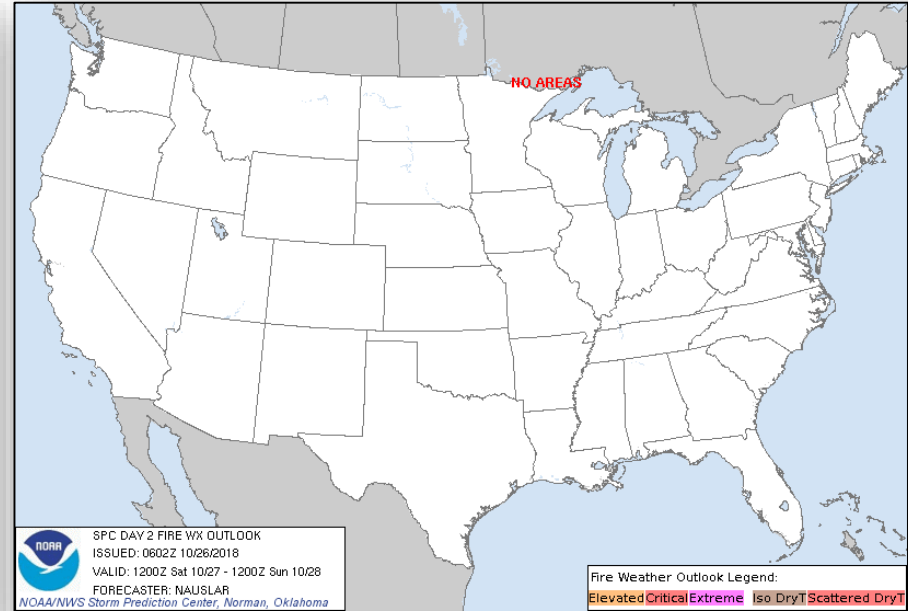
Fire Weather Outlook



FEMA



Friday

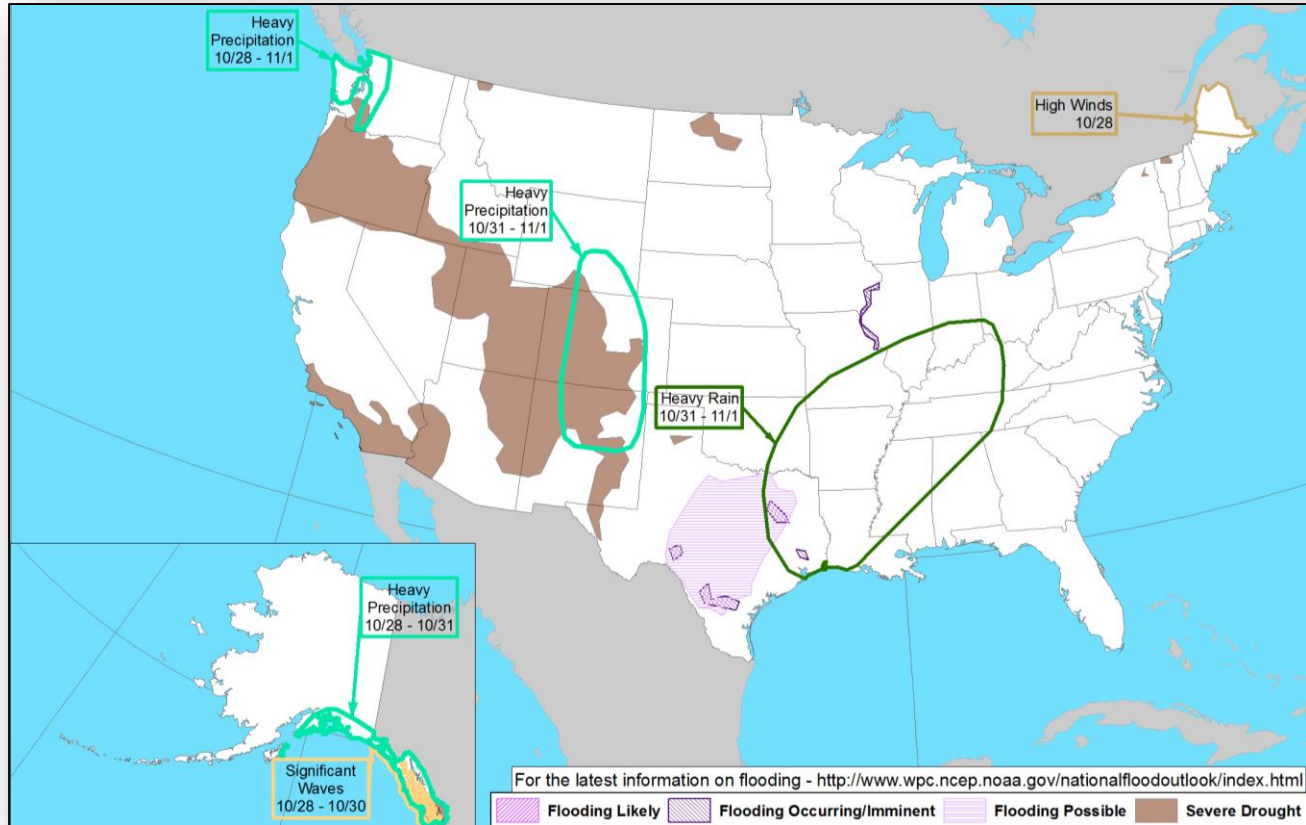


Saturday

Hazards Outlook – Oct 28 – Nov 01



FEMA



Joint Preliminary Damage Assessments



FEMA

Region	State / Location	Event	IA / PA	Number of Counties		Start – End
				Requested	Completed	
III	VA	Hurricane Michael	IA	0	0	NA
			PA	29	0	10/29 – TBD
V	MN	Flooding October 10, 2018	IA	0	0	NA
			PA	1	0	10/29 – 10/30
VI	TX	Riverine Flooding October 16, 2018 and continuing	IA	3	0	TBD
			PA	1	1	10/24 – TBD
IX	Tohono O'odham Nation (AZ)	Flooding September 30 – October 2, 2018	IA	1	0	10/23 – TBD
			PA	1	0	10/23 - TBD

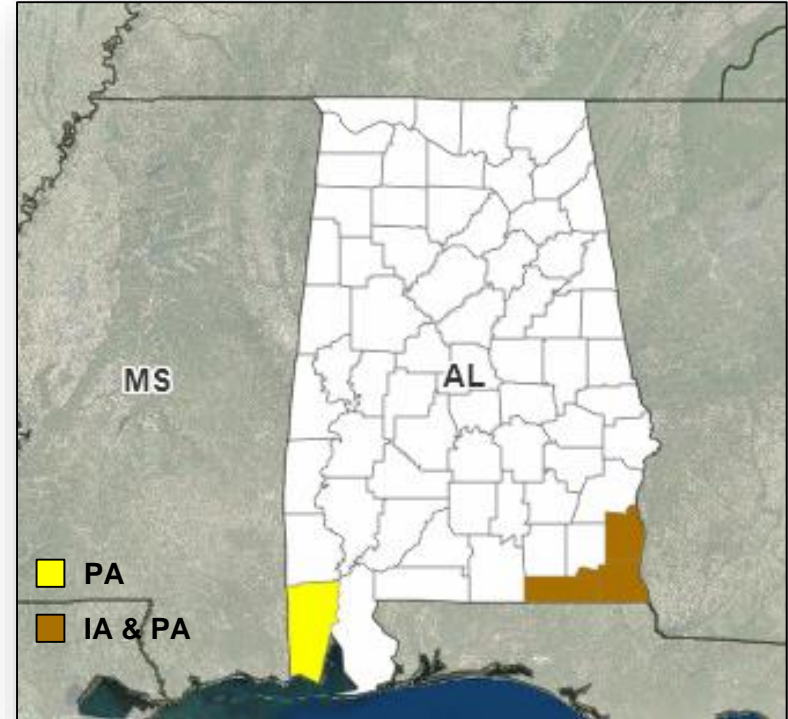
Declaration Request



FEMA

Alabama

- The Governor requested a Major Disaster Declaration on October 25, 2018 for the State of Alabama
- For Hurricane Michael during the period of October 10-13, 2018
- Requesting:
 - Individual Assistance for three counties
 - Public Assistance for four counties
 - Hazard Mitigation statewide



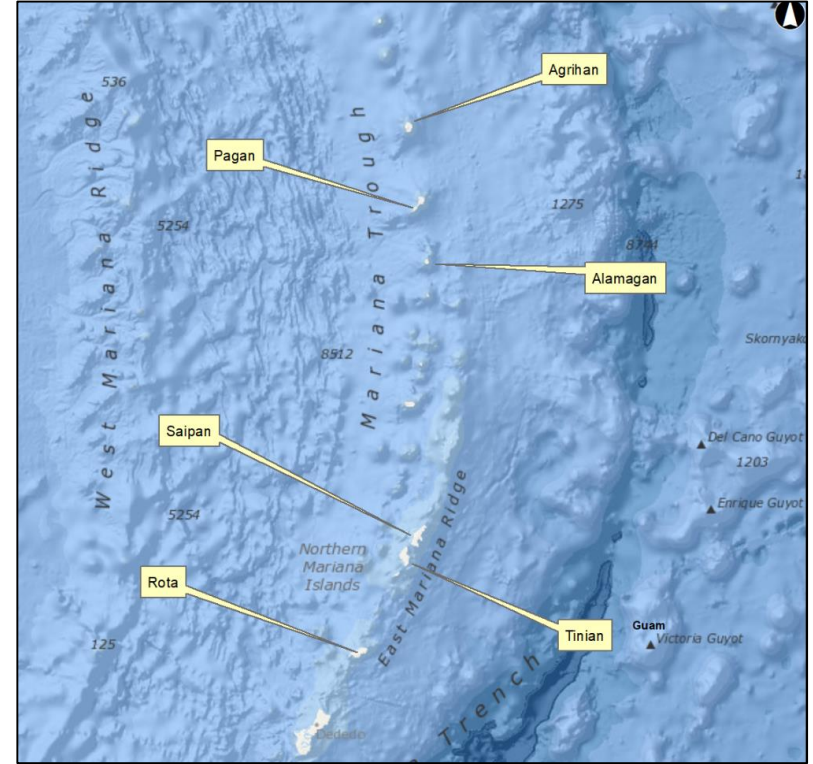
Declaration Request



FEMA

Commonwealth of Northern Mariana Islands

- The Governor requested an expedited Major Disaster Declaration on October 26, 2018 for the Commonwealth of the Northern Mariana Islands
- For Typhoon Yutu during the period of October 24, 2018 and continuing
- Requesting:
 - Individual Assistance for 6 islands
 - Public Assistance, including direct Federal assistance for 6 islands
 - Hazard Mitigation for the entire commonwealth



Disaster Requests & Declarations



FEMA

Declaration Requests in Process					Requests APPROVED (since last report)	Requests DENIED (since last report)
3	IA	PA	HM	Date Requested	0	0
NC – DR (Appeal) Severe Storms, Flooding, Landslides, and Mudslides	X	X	X	September 19, 2018		
AL – DR Hurricane Michael	X	X	X	October 25, 2018		
CNMI – DR Typhoon Yutu	X	X	X	October 26, 2018		

Disaster Amendments



FEMA

Amendment	Date Issued	Action
Amendment No. 2 to FEMA-4400-DR-GA	October 25, 2018	Adds 7 counties for Individual Assistance
Amendment No. 9 to FEMA-4393-DR-NC	October 25, 2018	Adds 3 counties for Individual Assistance

Readiness – Deployable Teams and Assets



FEMA

Resource	Force Strength	Available	Deployed	Other	Cadres with 25% or Less Availability
IM Workforce	12,284 ▲	2,030 ▼ 17%	6,844▲	3,410	DSA 9% (74/854); EA 21% (116/565); EHP 7% (29/428); ER 0% (0/43); FL 14% (22/159); FM 21% (57/272); HM 11% (112/1019); HR 12% (30/245); IA 21% (613/2914); IT 10% (63/635); LOG 13% (157/1191); OPS 17% (47/275); PA-NEW 8% (150/1904); PLAN 15% (52/344); SAF 2% (1/57); SEC 2% (2/119)
National IMATs* (1-2 Teams)	East : Composite: West:	Deployed Available B-2			
Regional IMATs (≤ 3 Teams)	Assigned: Available: PMC / NMC: Deployed:	13 1 2 10			
National ISBs (0 Teams)	Team A Team B Team C	Deployed Deployed Deployed			
US&R (>66%)	Assigned: Available: PMC / NMC: Deployed:	28 27 (+2) 1 (-2) 0			
MERS (>33-65%)	Assigned: Available: PMC / NMC: Deployed:	36 18 0 18			
FCO (≥3 Type I)	Assigned: Available: PMC / NMC: Deployed:	32 5 1 26			
FDRC (≥3)	Assigned: Available: PMC / NMC: Deployed:	13 4 2 7			
			<p>As of 3:00 p.m. EDT Oct 25, 2018 Created by: FEMA NWC</p>		

* **B-2 Status:** Assemble ≤ 2-hrs, On Site ≤ 18-hrs; **B-48 Status:** Assemble and deploy ≤ 48hrs; **Charlie Status:** No team assemble time requirement

FEMA Readiness – Activation Teams



FEMA

Status		Activated Team	Activation Level	Activation Times	Reason / Comments
NWC (5 Teams)	Steady State				
NRCC (2 Teams)	Activated	ROC		24/7	Tropical Cyclone Yutu
HLT	Activated				
RWC / MOCs (10 Regions)	Activated	Region VI	Enhanced Watch	8:00 a.m. – 8:00 p.m. EDT	Texas Flooding
RRCCs (10 Regions)	Steady State				

Backup Regions: **VI, X and VIII**



FEMA

**FEMA's mission is helping people
before, during, and after disasters.**

Click [here](#) to subscribe to this briefing.