



JOINT EOC ACTION PLAN #16

Hurricane Michael

Operational Period
0700 EDT 10/25/2018 - 0700 EDT 10/26/2018

Director / State Coordinating Officer

SERT Chief

//signed//

//signed//

Federal Coordinating Officer

//signed//

Hurricane Michael
FLORIDA SERT/FEMA JOINT INCIDENT ACTION PLAN # 16
OPERATIONAL PERIOD: 10/25/2018 at 0700 to 10/26/2018 at 0700

INCIDENT BRIEFING ICS FORM 201 & 202	
SEOC ACTIVATION LEVEL	Level 2
DECLARATION NUMBER	18-276, 18-277, and DR-4399
SITUATION	All Florida rivers and waterways are below flood stage. A broad area of low pressure in the central Atlantic Ocean has a 60% chance of tropical or subtropical development this weekend. However, this area of low pressure is not a threat to Florida or the Gulf of Mexico. Locally heavy rainfall is possible Thursday and Friday.
WEATHER	A disturbance will move across the northern Gulf Coast on Thursday, bringing an increase in rain chances. Rain is expected to increase from west to east through the day. Scattered showers are possible in the morning, but it will evolve into a steadier rain during the afternoon. Isolated embedded thunderstorms are possible, but severe weather is currently not expected. High temperatures will be held down in the lower 70s. Overnight Thursday night, steady rain will continue through the night. Lows will be mild—only settling in the lower to middle 60s. Widespread rainfall totals of 1-3 inches are expected, with isolated totals of 4+ inches possible. This could result in localized flash flooding. Winds will be breezy out of the southeast at 10-15 mph, with gusts near 25 mph near the coast.
STANDING ORDERS	<ol style="list-style-type: none"> 1. Establish communications with impacted areas. 2. Search, Secure, Stabilize. 3. Meet basic human needs of survivors. 4. Restore critical infrastructure. 5. Open schools and businesses. 6. Begin the Recovery.
OPERATIONAL OBJECTIVES	<ol style="list-style-type: none"> 1. Ensure basic needs of Florida residents and visitors. 2. Ensure the safety of responders. 3. Provide resource and protective action support for storm related preparations. 4. Promote coordination between State, Local, and SERT Partners. 5. Minimize economic impact of the affected areas or communities. 6. Keep stakeholders, responders, and the public informed of preparedness and response activities.
POTENTIAL LIMITING FACTORS	<ol style="list-style-type: none"> 1. Damage to critical infrastructure. 2. Limited communications. 3. Damage to hospitals.

OPERATIONS SECTION – EMERGENCY SERVICES BRANCH	
LIFELINES	
<ul style="list-style-type: none"> • Safety and Security <ul style="list-style-type: none"> ○ Critical assets are working missions. • Health and Medical <ul style="list-style-type: none"> ○ Special needs shelters are receiving support. • HazMat <ul style="list-style-type: none"> ○ Department of Environmental Protection and Fire Rescue are working HazMat incidents. 	

<u>Prepared By:</u> Amy Peterson Name, Unit/Title: Future Plans Lead	<u>Reviewed & Approved By:</u> Ryan Lock Name, Unit/Title: Plans Chief	<u>Time of Publishing:</u> 10/24/18 at 1700
---	---	--

Hurricane Michael
FLORIDA SERT/FEMA JOINT INCIDENT ACTION PLAN # 16
OPERATIONAL PERIOD: 10/25/2018 at 0700 to 10/26/2018 at 0700

TASKS	RESPONSIBLE ESF(S)
Finish specific location rechecks of possible missing persons at locations provided by ESF 15.	ESF 4/9
Maintain communication and accountability for all ESF 4/9 components; to include Engine Strike Teams, Tender Strike Teams, and Ambulance Strike Teams. Conduct demobilization process as teams are completed.	ESF 4/9
Conduct statewide regional calls coordinating the deployment of local resources.	ESF 4/9
Support sheltering and Transitional Housing operations.	ESF 8
Continue deployment of 208 single ambulance resources and 73 paratransit vehicles to support local EMS response efforts and health care facilities patient movement.	ESF 8
Coordinate discharge planning from shelters and healthcare facilities.	ESF 8
Support Environmental Health missions.	ESF 8
Coordinate with ESF 6 for medical needs in general population shelters.	ESF 8
Continue on-site water utility assessments being conducted in counties.	ESF 10
Continue field work and assessments in highly affected areas with 50 Water Utility crews.	ESF 10
Continue water samples at the Mobile Sampling Lab to lift boiled water notices.	ESF 10
Conduct water sampling in the Chipola River.	ESF 10
Plan for relief of personnel deployed down-range to include wrap up services.	ESF 16
Continue coordinating escorts of commodities.	ESF 16
Provide support for local law enforcement including security and traffic control.	ESF 16

OPERATIONS SECTION – HUMAN SERVICES BRANCH

LIFELINES

- Food, Water, Sheltering
 - There are currently 11 shelters opened with a shelter count of approximately 1,450; critical supplies have been dispersed including more than 1 million bottles of water.
- Safety and Security
 - The SEOC continues to support statewide sheltering operations, and the need for a mosquito response IMT is being assessed.

TASKS	RESPONSIBLE ESF(S)
Identify food box distribution sites.	ESF 6
Support call outs to safe and well list.	ESF 6/16/15
Ensure adequate supplies continue to be available to community feeding partners.	ESF 6
Identify alternate shelter locations for Bay County to allow Schools to open.	ESF 6
Assess the needs of Branch 2 and 4 food box distribution.	ESF 6
Assess NGO ability to continue operations.	ESF 6
Identify local and state programs to ensure they are being utilized in the Response and Recovery utilize programs for distribution.	ESF 6/8/11
Support needs assessments in shelters.	ESF 6
Continue to support Task Forces for Feeding and Sheltering.	ESF 6
Distribute FEMA Flyers with disaster relief information at PODs etc.	ESF 6/15/14
Continue to focus on Human Need and Comfort.	ESF 6
Continue communication with all open shelters to ensure they have no unmet needs.	ESF 6
Identify long term long term shelter needs.	ESF 6
Coordinate with involved agencies and organizations to staff DRC's.	ESF 6
Support assessment of individuals in shelters to help identify individuals with disabilities and functional needs.	ESF 6

Prepared By: Amy Peterson Name, Unit/Title: Future Plans Lead	Reviewed & Approved By: Ryan Lock Name, Unit/Title: Plans Chief	Time of Publishing: 10/24/18 at 1700
--	--	---

Hurricane Michael

FLORIDA SERT/FEMA JOINT INCIDENT ACTION PLAN # 16 OPERATIONAL PERIOD: 10/25/2018 at 0700 to 10/26/2018 at 0700

Plan to Deploy Multi Agency Shelter Transition Team Saturday 10.27.18 Local, State and Federal Agencies.	ESF 6	
Identify impacts to licensed day care facilities.	ESF 6	
Identify impacts to US Postal Service.	ESF 6	
Work with Logistics to hook up all comfort packages by zip code.	ESF 6	
Determine the need and Identify additional resources available for infant and elderly supplies.	ESF 6/11	
Continue to fulfill USDA food requests for congregate feeding.	ESF 11	
Discontinue auto shipments to PODs transition to County Ordering through missions.	ESF 11	
Mobilize and deliver trucks of ice as requested.	ESF 11	
Prepare to staff FEMA AFO in Tallahassee.	ESF 11	
Centers for independent living working to ensure the large number of individuals that have been moved have been moved to the right location.	ESF 11	
Facilitate discussions between FDACS and its distributing agencies for The Emergency Food Assistance Program regarding resuming distributions in the impacted counties.	ESF 11	
Continue to message Crisis Cleanup messaging, the phone number is 800-451-1954.	ESF 15	
Continue to work multi-agency warehouse missions.	ESF 15	
Support POD's, Shelters, DRC's and Base Camps with volunteers.	ESF 15	
Work to distribute tarps and expand teams.	ESF 15	
Distribute palm cards with critical information for partners in the field.	ESF 15	
Continue to match volunteer with volunteer opportunities, 9,000 spontaneous volunteers registered.	ESF 15	
Work with faith based organizations for temporary housing resources.	ESF 15	
Deploy Americorps Teams and obtain equipment for them.	ESF 15	
Continue operations of ICP in Tallahassee and staging area in Marianna for IMT resources and donated items to be received and distributed to the affected communities.	ESF 17	
Continue assessments, find urgent needs and work to fulfill those needs in Bay, Calhoun, Gulf, Franklin and Washington.	ESF 17	
The Mosquito Control Incident Response Team (MCIRT) will continue mosquito trapping activities in impacted areas.	ESF 17	
Coordinate with the HSUS to address small and large animal feed needs.	ESF 17	
Coordinate mission requests with Calhoun County for animal transport and feed needs.	ESF 17	
Coordinate site locations in Jackson and Calhoun counties for FVMA to visit and provide veterinary care.	ESF 17	
Hold daily conference call with ESF 6 Mass Care to coordinate pet shelter needs with Jackson, Gulf and Bay Counties.	ESF 17	
Coordinate with Florida Cattleman's Association to address fencing needs for cattle and dairy industry partners.	ESF 17	
Coordinate with Office of Agricultural Water Policy (OAWP) to coordinate needs assessments and resource deliveries for water, power and fencing needs with OAWP staff.	ESF 17	
Coordinate with UF/IFAS Extension to receive farm and producer locations that are impacted and requesting resources.	ESF 17	
Coordinate with UF/IFAS Extension on identifying additional water distribution centers.	ESF 17	
Continue to deliver donations supplies to the affected counties: Jackson, Washington, Bay, Calhoun and Gulf.	ESF 17	
Prepared By: Amy Peterson Name, Unit/Title: Future Plans Lead	Reviewed & Approved By: Ryan Lock Name, Unit/Title: Plans Chief	Time of Publishing: 10/24/18 at 1700

Hurricane Michael
FLORIDA SERT/FEMA JOINT INCIDENT ACTION PLAN # 16
OPERATIONAL PERIOD: 10/25/2018 at 0700 to 10/26/2018 at 0700

Continue to distribute donations at the Jackson County Agriculture Center (Jackson County) to livestock producers and small animal owners.	ESF 17
Identify locations for additional ESF 17 donation distribution sites in Liberty and Calhoun counties.	ESF 17
Food Safety Assessment Teams will continue to assess retail and manufactured food facilities.	ESF 17
Continue to monitor and submit EMAC Missions for SERT support	Human Services

OPERATIONS SECTION – INFRASTRUCTURE BRANCH

LIFELINES

- Energy
 - Electric utility workers, contractors and mutual aid continue restoring electric service to the impacted areas. Utilities report more over 19,000 work force, contract and mutual aid restoration crew numbers mobilized to staging areas and into field work performing restorations to ensure critical services and facilities remain operational.
- Communications
 - Telecommunication industry partners are restoring service with priority for critical facilities, such as medical facilities, local Emergency Operations Centers and 9-1-1 dispatch.
- Transportation
 - Continue emergency roadway repairs and critical signal restoration. FDOT will, at the county's voluntary request and limited to fiscally constrained counties, take on the responsibility for each county's existing pre-storm emergency debris removal contract.
- Safety and Security (supporting)
 - Clearing debris from roadways and restoring telecommunications, electricity and fuel to first responders.

TASKS	RESPONSIBLE ESF(S)
Continue emergency repairs on critical signal restoration.	ESF 1/3
Continue debris removal on county roads per mission requests.	ESF 1/3
Continue debris removal on state roads.	ESF 1/3
Telecommunication industry partners will monitor, assess, and report communication operational status of facilities, equipment, and services.	ESF 2
Expedite restoration of communications.	ESF 2
Monitor/support missions for Communications Strike Teams deployed in affected areas.	ESF 2
Continue monitoring SLERS (Statewide 800 MHZ radio) and county radio systems status, providing daily SitRep via ESF 2 ECO.	ESF 2
Right size fuel depots in impacted areas.	ESF 12 Fuels
Continue emergency fuel deliveries in impacted areas and critical needs facilities.	ESF 12 Fuels
Update mutual aid information for number of restoration crews.	ESF 12 Power
Monitor electric grid for outages in impacted areas.	ESF 12 Power
Mobilize deployment of electric restoration trucks, equipment, and staff.	ESF 12 Power
Monitor and assess status of facilities and equipment and report state-wide electric utilities service outages data and estimated restoration times in storm impacted areas.	ESF 12 Power
Deploy resources (restoration trucks, equipment, and staff).	ESF 12 Power
Continue to monitor the natural gas supply.	ESF 12 Power

OPERATIONS SECTION – AIR OPERATIONS BRANCH

LIFELINES

Prepared By: Amy Peterson Name, Unit/Title: Future Plans Lead	Reviewed & Approved By: Ryan Lock Name, Unit/Title: Plans Chief	Time of Publishing: 10/24/18 at 1700
--	--	---

Hurricane Michael
FLORIDA SERT/FEMA JOINT INCIDENT ACTION PLAN # 16
OPERATIONAL PERIOD: 10/25/2018 at 0700 to 10/26/2018 at 0700

TASKS	RESPONSIBLE ESF(S)
LOGISTICS SECTION	
LIFELINES	
<ul style="list-style-type: none"> • Food, Water, Sheltering <ul style="list-style-type: none"> ○ Shelters: Supporting 11 shelters with Showers, Dumpsters, Cleaning Services, and Laundry; 3 shelters closed ○ LSAs: Three active LSAs at Suwannee, Tallahassee, and Mariana ○ Base Camps: <ol style="list-style-type: none"> 1. 11 Open: Knowles Ave. Port St. Joe, Marianna Airport, Beaches Airport, Tallahassee Airport, HG Harders Park (FEMA/First Responders), HG Harders Park (FLNG), Base Camp ECO, Old Airport (FEMA), Old Airport (FLNG), Gulf Medical Center (hospital staff), Port St. Joe High School (First Responders) 2,991/7150 (41%) 2. Incident Management Teams on standby at all 11 Base Camp locations ○ PODs: providing resources with 23 open PODs w/ 2 transitioning in status ○ 8 DRCs open; 7 MRICs open • Health & Medical <ul style="list-style-type: none"> ○ Maintain sanitation resources and services for shelters, PODs, and base camps ○ Staging blankets and heater distro to address shift in climate ○ Staging pumps at SLRC 	
TASKS	RESPONSIBLE ESF(S)
Focus on fulfillment of priority items as requested by county EOC's.	Logistics/FLNG
Distribute and service cooling/comfort stations, dumpsters, and SANPAC's to POD's.	Logistics
Distribute tarps to county EOCs.	Logistics
Branch units will provide feedback for mission management and accuracy.	Logistics/FLNG
Distribute and maintain critical services, laundry, shower, and other wrap around services to shelters.	Logistics
Right-size Base Camp operations with county EOCs, ESF 13, and EMAC.	Logistics
Reallocate deployed commodities and repurpose deployed assets to priority locations.	Logistics
Support DRC logistical needs.	Logistics
FINANCE AND ADMINISTRATION SECTION	
TASKS	RESPONSIBLE ESF(S)
Coordinate with Logistics processing purchase orders for the LSA's and Base Camps, and Human Services Branch.	Finance
Contact POCs for mission management to see if goods/services have been received.	Finance
ESF 13 – MILITARY AFFAIRS	
TASKS	RESPONSIBLE ESF(S)
Continue conducting POD, SLRC, LSAs, and Logistical support and provide SERT LNOs to 4 counties and 1 SAR LNO.	ESF-13/TF-164
Conduct communications support, Base Camp support, and shelter missions.	ESF-13/TF-164
Conduct security missions and coordinate with LEO for mission requirements.	ESF-13/TF-164
ESF 14 – EXTERNAL AFFAIRS/PUBLIC INFORMATION	
TASKS	RESPONSIBLE ESF(S)
Push life safety and protective action messaging and amplify partner messaging via social media.	ESF 14
Handle media requests and continue to publish press release updates.	ESF 14

Prepared By: Amy Peterson Name, Unit/Title: Future Plans Lead	Reviewed & Approved By: Ryan Lock Name, Unit/Title: Plans Chief	Time of Publishing: 10/24/18 at 1700
--	--	---

Hurricane Michael
FLORIDA SERT/FEMA JOINT INCIDENT ACTION PLAN # 16
OPERATIONAL PERIOD: 10/25/2018 at 0700 to 10/26/2018 at 0700

ESF 18 – BUSINESS, INDUSTRY, AND ECONOMIC STABILIZATION	
TASKS	RESPONSIBLE ESF(S)
Support DEO in the implementation of the Bridge Loan, National Dislocated Worker Grant, and Disaster Unemployment Assistance programs.	ESF 18
Work with SBA and SBDCN to open and operate Business Recovery Centers.	ESF 18
Identify and coordinate private sector support of ESF 6 comfort and morale effort to shelters.	ESF 18
Fulfill mission requests to provide staffing at Disaster Recovery Centers.	ESF 18
Conduct private sector conference calls to help facilitate state/local communications.	ESF 18
Provide informational updates to private sector partners.	ESF 18
Survey businesses to assess physical and economic impacts.	ESF 18
RECOVERY SECTION	
TASKS	RESPONSIBLE ESF(S)
Deploy Public Assistance Preliminary Damage Assessment Teams to Calhoun County to perform a Joint Preliminary Damage Assessment.	Recovery
Identify permitting and zoning issues that may deter temporary housing placement.	Recovery
Establish Federal, State, Local, and Voluntary stakeholders for Housing Task Force.	Recovery
Place State staff on standby to deploy to the Area Field Office (AFO).	Recovery

<u>Prepared By:</u> Amy Peterson Name, Unit/Title: Future Plans Lead	<u>Reviewed & Approved By:</u> Ryan Lock Name, Unit/Title: Plans Chief	<u>Time of Publishing:</u> 10/24/18 at 1700
---	---	--

Hurricane Michael
FLORIDA SERT/FEMA JOINT INCIDENT ACTION PLAN # 16
OPERATIONAL PERIOD: 10/25/2018 at 0700 to 10/26/2018 at 0700

BATTLE RHYTHM 10/25/2018		
TIME	EVENT	LOCATION OR CONFERENCE CALL/WEBINAR INFO
0700	Shift begins	
0730	Unified Command and General Staff Meeting	130D
0800	Briefing Slides Due	WebEOC
0800	Lifeline Summary Updates Due from Branches	EOC-Plans@em.myflorida.com
0830	SERT AM Briefing	SEOC
0900	Human Services and Logistics Sync Meeting	130D
0930	Emergency Services Tactics Meeting	130D
1000	Mass Care Coordination Call	Sadowski DCR
1100	Deadline for Sit Rep Inputs	
1115	State/County Conference Call	130-D
1200	Sit Rep Published	
1200	IAP Inputs Due	
1200	FEMA Operations Tactics Meeting	Sadowski 305
1300	Shelter Morale Task Force	130D
1300	DSNAP Coordination Meeting	Sadowski DCR
1400	Logistics Tactics Meeting	130D
1500	Housing Call	Conference Call
1600	IAP Meeting	130-D
1715	State/County Conference Call	130-D
1730	Briefing Slides Due	WebEOC
1730	SERT/FEMA Housing Coordinator Call	Sadowski 360Q
1800	SERT PM Briefing	SEOC
1830	Human Services and Logistics Sync Meeting	130D
1900	Shift ends	

<u>Prepared By:</u> Amy Peterson Name, Unit/Title: Future Plans Lead	<u>Reviewed & Approved By:</u> Ryan Lock Name, Unit/Title: Plans Chief	<u>Time of Publishing:</u> 10/24/18 at 1700
---	---	--

SERT/SEOC ASSIGNMENT LIST 0700-1900 | ICS FORM 203

Incident Commander(s) and Command Staff		Operations Section	
SCO	Wesley Maul	Chief	Ashley Davis
Deputy SCO	Michael Kennett	Deputy	Sam Walters/Axel Runtschke
SERT Chief	Kevin Guthrie	Duty Officer	Taylor Cheney
Deputy SERT Chief		Ops Support	Brianna Beynart
Public Information Officer	Andrew Wilber	IMT Planner	Ian Guidicelli
ESF 14	Alberto Moscoso	Emergency Services Branch	
Agency/Organization Representatives		Director	Robert Dietrich 850-727-3414
Legal	Jaxon Lear	Deputy	Kim Sharkey 850-528-8976
ESF 18	Beverly Byerts	Planner	Margaret Giani
FEMA Liaison	Paul Williams		Eric Lott
ESF 13	Melissa DeLeon		
Planning Section		ESF 4/9	Wayne Watts 850-528-8200
Chief	Ryan Lock		Joe Steadman 850-251-5987
Deputy	Laura Waterman	ESF 8	Christie Luce 850-363-4777
Meteorology	Amy Godsey/Cameron Young		Samantha Cooksey 850-545-8644
ESF 5		ESF 10	Nick Roff 850-491-5482/Austin Hofmeister/Brooke Kincaid
Lead	Amy Peterson 850-567-7491	ESF 16	Harvey Jones/Heather Myers/Melanie Walker
Human Services Branch Planner		Human Services Branch	
Emergency Services Branch Planner		Director	Pam Hughes
		Deputy	Heather Mayfield/Doug Roberts/Russ Korzeniewski
Infrastructure Branch Planner		Planner	Michael Brake/James Forstall
		ESF 6	Peter Newman 850-443-8128/Patricia Broadway
Branch Planner	Kaylynn Perry	ESF 11	Kyle Jordan 850-251-0709/Lisa Church
Situation Unit		ESF 15	Ken Skalitzky 850-661-0725/Christy Rojas-Kasten
		ESF 17	Dr. Greg Christie 850-321-9830/Summer Williams/Calvin Brown
Technical Services Branch		Infrastructure Branch	
Director	Richard Butgereit 850-778-6642	Director	Paul Holloway 850-815-4860
GIS	Jason Ray 850-443-0170	Deputy	Amy Finch
Help Desk	Larry Hancock 850-591-3812	Planner	Marcus Henry
Logistics Section		ESF 1/3	Irene Cabral 850-245-1702
Chief	Andrew Baxter 850-559-9648	ESF 2	Danette McBride 850-815-4935
Deputy			
Support Branch		ESF 12 Power	Rick Moses 0700-1530 850-413-6838
Director	Laura Beagle 850-251-0709		Emily Knoblauch 1530-1900
Deputy	Alonna Vinson 850-901-8456	ESF 12 Fuels	Debbie Bass 850-815-4020
State Logistics Response Center			Jimmy Nguyen
Director	Connie Nunn 850-528-7517	Recovery Section	
Deputy	Jeff Egan	Bureau Chief	Joseph Oglesby 850-509-9118
Service Branch		Section Chief	Jennifer Stallings 850-591-0439
Director	Lt. Col. Knox 813-598-5649	Deputy	Amanda Campen 850-815-4910
Deputy	Cpt Cossey	Recovery Planner	Genie Colvin 850-815-4909
Support Services		IA Coordinator	Page Merkison 850-510-7912
Director	Gene Buerkle 850-294-5873	PA Officer	Carter Mack 850-445-1106
Deputy	Bruce Roberts	Finance/Administration Section	
		Chief	Jenene Helms 850-815-4609
		Administrator	Phyllis Vaughn 850-815-4834

SERT/SEOC ASSIGNMENT LIST 1900-0700 | ICS FORM 203

Incident Commander(s) and Command Staff		Operations Section	
SCO	Wes Maul	Chief	Ashley Davis
Deputy SCO	Michael Kennett	Deputy	Sam Walters
SERT Chief	Kevin Guthrie	Duty Officer	Taylor Cheney
Deputy SERT Chief	Linda McWhorter	Ops Support	SWO 850-413-9900
Public Information Officer	Alberto Moscoso	IMT Planner	SWO 850-413-9900
ESF 14		Emergency Services Branch	
Agency/Organization Representatives		Director	Rob Dietrich 850-727-3414
Legal		Deputy	
ESF 18	Beverly Byerts 850-666-3747	Planner	
FEMA Liaison			
ESF 13	Melissa DeLeon 850-251-0962		
Planning Section		ESF 4/9	Mike Wajda 407-702-7754
Chief	Ryan Lock 850-841-9484	ESF 8	866-786-4673
Deputy		ESF 10	Nick Roff 850-491-5482
Meteorology		ESF 16	Rhonda Kerce 850-694-3271
ESF 5		Human Services Branch	
Lead		Director	Pam Hughes 850-528-5638
Human Services Branch Planner		Deputy	Heather Mayfield 850-212-6817
Emergency Services Branch Planner		Planner	
		ESF 6	Peter Newman 850-443-8128
Infrastructure Branch Planner		ESF 11	Dexter Harris 850-363-2002
		ESF 15	Ken Skalitzky 850-661-0725
		ESF 17	Dr. Greg Christie 850-321-9830
Branch Planner		Infrastructure Branch	
Situation Unit		Director	Danny Kilcollins 850-519-8581
Technical Services Branch		Deputy	
Director	Jason Ray 850-443-0170	Planner	
GIS		ESF 1/3	850-545-1232
Help Desk		ESF 2	Bob Little 850-284-6940
Logistics Section		ESF 12 Power	Rick Moses 850-879-8665
Chief	Lt. Col. Knox 813-598-5649	ESF 12 Fuels	Debbie Bass 850-544-3945
Deputy		Recovery Section	
Support Branch		Bureau Chief	Joseph Oglesby 850-509-9118
Director		Section Chief	
Deputy		Deputy	
State Logistics Response Center		Recovery Planner	
Director		IA Coordinator	
Deputy		PA Officer	
Service Branch		Finance/Administration Section	
Director		Chief	Phyllis Vaughn 850-544-2154
Deputy		Administrator	Antionette Akisanya 850-508-1768
Support Services			
Director	Gene Buerkle 850-294-5873		
Deputy			

FEMA ICS FORM 202 INCIDENT OBJECTIVES	1. FEMA Disaster Number: DR-4399-FL	2. Date/Time Prepared: 10/24/2018 1430 EDT
4. Operational Period: 10/25/2018 0700 EDT to 10/26/2018 0700 EDT		
5. General objectives for the Incident:		
Objective Number	Description	
12	Maintain the safety of responders in the impacted areas. (Safety and Security Lifeline)	
8	Provide timely disaster specific information to the public, stakeholders and the media. (All Lifelines and Unified Recovery Outcomes)	
2a	Consolidate shelter populations and transition sheltered survivors to safe, sanitary and secure short-term housing. (Food, Water, and Shelter Lifeline)	
11b	Register disaster survivors and businesses for recovery assistance and provide follow-on case management. (Food, Water, and Shelter Lifeline, Housing & Economic Recovery Unified Recovery Outcomes)	
14	Collect Rights of Entry and install temporary blue roofs; evaluate additional temporary home repair solutions. (Food, Water, and Shelter Lifeline, Housing Unified Recovery Outcome)	
17	Conduct housing inspections; assess the disaster-caused housing needs and available resources to scope the requirements for potential Direct Temporary Housing Assistance. (Housing Unified Recovery Outcome)	
19	Mitigate public health impacts. (Health & Medical Lifeline)	
9b	Provide triage and treatment at impacted healthcare facilities. (Health and Medical Lifeline)	
5b	Provide assessments and install generators for temporary emergency power requirements. (All Lifelines)	
6a	Evaluate and stabilize main transportation arteries in the designated counties. (Transportation Lifeline)	
15b	Conduct infrastructure assessments and provide technical assistance on emergency repairs and potential temporary critical public facilities. (All Lifelines)	
16a	Identify and type debris for removal, including hazardous materials and sunken, derelict, or displaced vessels. (Hazardous Waste & Transportation Lifelines)	
3a	Provide redundant communications and technical assistance to Public Safety Answering Points and cellular providers. (Communications Lifeline)	
7	Complete Preliminary Damage Assessments for potential permanent repairs to damaged infrastructure by 10/31/2018. (Infrastructure Unified Recovery Outcome)	
18	Reduce the impact and loss from future disasters. (Community Resilience Unified Recovery Outcome)	
6. Weather Forecast for Period (Only if significant to Operations)		
<p>Panhandle Weather: A chance of rain, and possibly thunderstorms after 2pm. High near 72. New rainfall amounts between a quarter and half of an inch possible.</p> <p>No current River Flood Warnings.</p>		
7. General/Safety Message		

Road debris can be extremely dangerous to motorists. Especially so on roadways where cars travel at high speeds and have less time to react to objects in the road.

Plan your route and check road conditions before travelling to damaged areas.

Before traveling make sure tires are properly inflated. Tires need to have ample tread to properly grip roads.

Always wear your seatbelt!

Drivers should continually search the road ahead for debris.

Don't tailgate! By leaving at least 3 to 4 seconds of following distance, you can see potential objects in the road ahead.

If you see you are about to make contact with debris, safely reduce your speed as much as possible prior to making contact.

When driving at dusk and dawn be especially alert for animals or debris on or near the roadway.

Be aware of open space around your vehicle. Drivers should maintain open space to the front and at least one side of their vehicle at all times. Should the need arise, a driver can steer into that open space to avoid contact with an object.

Report incidents, and road debris. If you have an Emergency situation, dial 911. Otherwise, use your cellular phone; dial *FHP (*347) to reach the Florida Highway Patrol station nearest you.

Not all damaged or destroyed road signs have been replaced; be prepared to yield to a pedestrian or another driver or to stop unexpectedly.

Obey all road closed signs. Just because you can't see road damage doesn't mean it is safe.

Treat any intersection with non-working traffic signals as an all-way stop. Be prepared to stop at every intersection.

Should you come upon a stopped emergency vehicle, Florida's Move Over law requires you to vacate the lane closest to the vehicle as soon as it is safe to do so.

If your vehicle or tires are damaged by hitting debris notify your supervisor and safety as soon as possible. Then place a call to the rental car company for roadside repair.

8. Attachments (mark if attached)

<input checked="" type="checkbox"/> Assignment Lists - ICS 204	<input checked="" type="checkbox"/> Organization Chart - ICS 207	<input checked="" type="checkbox"/> Critical Information Requirements
<input type="checkbox"/> Radio Communications Plan - ICS 205	<input checked="" type="checkbox"/> Air Operations Summary - ICS 220	<input checked="" type="checkbox"/> Alligator Brochure
<input checked="" type="checkbox"/> Telephone Communications Plan - ICS 205 A	<input checked="" type="checkbox"/> Meeting Schedule - ICS 230	<input type="checkbox"/>
<input checked="" type="checkbox"/> Medical Plan - ICS 206	<input checked="" type="checkbox"/> Incident Map	<input type="checkbox"/>

9. Prepared by:

Jose Lizama
RESL

Date/Time: 10/24/2018 1400 EDT

10. Reviewed By:

David Clay
DPSC

Date/Time: 10/24/2018 1400 EDT

FEMA ICS Form 205A Incident Telephone Communication Plan	FEMA Disaster Number: DR-4399-FL	2. Operational Period: 10/25/2018 0700 EDT to 10/26/2018 0700 EDT
---	--	---

3. Contact List
Incident Facilities/Contacts

Incident Facilities	Facility Operational Hours	Phone Number	Additional Info
<p style="text-align: center;">SEOC / IOF , EOC / IOF , 2555 Shumard Oak Blvd , Tallahassee , FL 32311-7844</p> <p>USNG: 16R GU 66064 64872</p>	Monday: 0700 EDT - 1900 EDT Tuesday: 0700 EDT - 1900 EDT Wednesday: 0700 EDT - 1900 EDT Thursday: 0700 EDT - 1900 EDT Friday: 0700 EDT - 1900 EDT Saturday: 0700 EDT - 1900 EDT Sunday: 0700 EDT - 1900 EDT	<p style="text-align: center;">Main Switchboard</p> Phone: 850-413-9969	N/A
<p style="text-align: center;">IOF Annex - Hotel Duval , IOF Annex , 415 North Monroe Street , Tallahassee , FL 32301</p> <p>USNG: 16R GU 61139 71376</p>	Monday: 0700 EDT - 1900 EDT Tuesday: 0700 EDT - 1900 EDT Wednesday: 0700 EDT - 1900 EDT Thursday: 0700 EDT - 1900 EDT Friday: 0700 EDT - 1900 EDT Saturday: 0700 EDT - 1900 EDT Sunday: 0700 EDT - 1900 EDT	<p style="text-align: center;">Jeff Cole</p> Phone: 202-550-4411	N/A
<p style="text-align: center;">Area Field Office Annex , Forrest Building , 2728 Centerview Dr , Tallahassee , FL 32301</p> <p>USNG: 16R GU 65688 68621</p>	Monday: 0700 EDT - 1900 EDT Tuesday: 0700 EDT - 1900 EDT Wednesday: 0700 EDT - 1900 EDT Thursday: 0700 EDT - 1900 EDT Friday: 0700 EDT - 1900 EDT Saturday: 0700 EDT - 1900 EDT Sunday: 0700 EDT - 1900 EDT	<p style="text-align: center;">TBD</p>	Forrest Building
<p style="text-align: center;">Area Field Office Tallahassee , Sutton Building , 2670 Executive Center Circle West , Tallahassee , FL 32301</p> <p>USNG: 16R GU 65503 68960</p>	Monday: 0700 EDT - 1900 EDT Tuesday: 0700 EDT - 1900 EDT Wednesday: 0700 EDT - 1900 EDT Thursday: 0700 EDT - 1900 EDT Friday: 0700 EDT - 1900 EDT Saturday: 0700 EDT - 1900 EDT Sunday: 0700 EDT - 1900 EDT	<p style="text-align: center;">TBD</p>	Sutton Building
<p style="text-align: center;">JFO , 6021 South Rio Grande Avenue , Orlando , FL 32809</p> <p>USNG: 17R MM 60774 49309</p>	Monday: 0700 EDT - 1700 EDT Tuesday: 0700 EDT - 1700 EDT Wednesday: 0700 EDT - 1700 EDT Thursday: 0700 EDT - 1700 EDT Friday: 0700 EDT - 1700 EDT Saturday: Closed Sunday: Closed	<p style="text-align: center;">Kendal Sessions</p> Phone: 202-384-5075	DR-4337 JFO
<p style="text-align: center;">Region IV Office , Region Office , 3003 Chamblee Tucker Road , Atlanta , GA 30341-4112</p> <p>USNG: 16S GC 52740 52155</p>	Monday: 0000 EDT - 2359 EDT Tuesday: 0000 EDT - 2359 EDT Wednesday: 0000 EDT - 2359 EDT Thursday: 0000 EDT - 2359 EDT Friday: 0000 EDT - 2359 EDT Saturday: 0000 EDT - 2359 EDT Sunday: 0000 EDT - 2359 EDT	<p style="text-align: center;">Watch Officer</p> Phone: 770-220-3158 Fax: 770-220-8797	N/A

<p>Temporary Branch I Office - Green Hornet at Gulf Coast State College , Temporary Branch Office , 637 Highway 2300 , Panama City , FL 32409</p> <p>USNG: 16R FU 28806 52665</p>	Monday: 0700 EDT - 1900 EDT Tuesday: 0700 EDT - 1900 EDT Wednesday: 0700 EDT - 1900 EDT Thursday: 0700 EDT - 1900 EDT Friday: 0700 EDT - 1900 EDT Saturday: 0700 EDT - 1900 EDT Sunday: 0700 EDT - 1900 EDT	<p>TBD</p> <p>Phone: N/A</p>	Bay County Panama City FL
<p>Temporary Branch III Office - Public Library , Temporary Branch Office , 17731 NE Pear St , Blountstown , FL 32424</p> <p>USNG: 16R FU 87706 70997</p>	Monday: 0700 EDT - 1900 EDT Tuesday: 0700 EDT - 1900 EDT Wednesday: 0700 EDT - 1900 EDT Thursday: 0700 EDT - 1900 EDT Friday: 0700 EDT - 1900 EDT Saturday: 0700 EDT - 1900 EDT Sunday: 0700 EDT - 1900 EDT	<p>Andrew Jahier</p> <p>Phone: 202-802-2627 / 240-699-6134</p>	Calhoun County
<p>Base Camp - HG Harders Park , Base Camp , 8110 John Pitts Road , Panama City , Florida 32404</p> <p>USNG: 16R FU 43403 47224</p>	Monday: 0000 EDT - 2359 EDT Tuesday: 0000 EDT - 2359 EDT Wednesday: 0000 EDT - 2359 EDT Thursday: 0000 EDT - 2359 EDT Friday: 0000 EDT - 2359 EDT Saturday: 0000 EDT - 2359 EDT Sunday: 0000 EDT - 2359 EDT	<p>Mike Kendall</p> <p>Phone: 347-393-3705</p>	Bay County Panama City FL
<p>Base Camp - Northwest Florida Beaches International Airport , Base Camp , 6300 West Bay Oarkway , Panama City , FL 32409</p> <p>USNG: 16R FU 24333 58966</p>	Monday: 0000 EDT - 2359 EDT Tuesday: 0000 EDT - 2359 EDT Wednesday: 0000 EDT - 2359 EDT Thursday: 0000 EDT - 2359 EDT Friday: 0000 EDT - 2359 EDT Saturday: 0000 EDT - 2359 EDT Sunday: 0000 EDT - 2359 EDT	<p>Joel Garza</p> <p>Phone: 956-617-6566</p>	Bay County Panama City, FL
<p>Base Camp ECO , Base Camp , 540 Hwy. 2300 , Panama City , FL 32409</p> <p>USNG: 16R FU 28986 52729</p>	Monday: 0000 EDT - 2359 EDT Tuesday: 0000 EDT - 2359 EDT Wednesday: 0000 EDT - 2359 EDT Thursday: 0000 EDT - 2359 EDT Friday: 0000 EDT - 2359 EDT Saturday: 0000 EDT - 2359 EDT Sunday: 0000 EDT - 2359 EDT	<p>Dave Hanneman</p> <p>Phone: 208-716-6701</p>	Bay County Panama City, FL
<p>Base Camp Port St. Joe , Base Camp , 1000 Cecil G. Costin Sr. Blvd #500 , Port St , FL 32456</p> <p>USNG: 16R FU 62645 00257</p>	Monday: 0000 EDT - 2359 EDT Tuesday: 0000 EDT - 2359 EDT Wednesday: 0000 EDT - 2359 EDT Thursday: 0000 EDT - 2359 EDT Friday: 0000 EDT - 2359 EDT Saturday: 0000 EDT - 2359 EDT Sunday: 0000 EDT - 2359 EDT	<p>Steven Moore</p> <p>Phone: 979-587-9081</p>	Gulf County Port St Joe, FL
<p>Base Camp - Marianna Municipal Airport , Base Camp , 3689 Industrial Park Drive , Marianna , FL 32446</p> <p>USNG: 16R FV 73906 12748</p>	Monday: 0000 EDT - 2359 EDT Tuesday: 0000 EDT - 2359 EDT Wednesday: 0000 EDT - 2359 EDT Thursday: 0000 EDT - 2359 EDT Friday: 0000 EDT - 2359 EDT Saturday: 0000 EDT - 2359 EDT Sunday: 0000 EDT - 2359 EDT	<p>John DeWolf</p> <p>Phone: 813-714-3527</p>	Jackson County Marianna, FL

<p>Base Camp - FAMU Gym , Base Camp , 1800 Wahnish Way , Tallahassee , FL 32310</p> <p>USNG: 16R GU 60335 68946</p>	<p>Monday: 0000 EDT - 2359 EDT Tuesday: 0000 EDT - 2359 EDT Wednesday: 0000 EDT - 2359 EDT Thursday: 0000 EDT - 2359 EDT Friday: 0000 EDT - 2359 EDT Saturday: 0000 EDT - 2359 EDT Sunday: 0000 EDT - 2359 EDT</p>	<p>CPT Maurice Toller Phone: 904-534-5538</p>	<p>Leon County Tallahassee, FL</p>
<p>Base Camp - Tallahassee International Airport , Base Camp , 6011 Springhill Road , Tallahassee , FL 32310</p> <p>USNG: 16R GU 54034 63397</p>	<p>Monday: 0000 EDT - 2359 EDT Tuesday: 0000 EDT - 2359 EDT Wednesday: 0000 EDT - 2359 EDT Thursday: 0000 EDT - 2359 EDT Friday: 0000 EDT - 2359 EDT Saturday: 0000 EDT - 2359 EDT Sunday: 0000 EDT - 2359 EDT</p>	<p>Tony Auch Phone: 727-259-3122</p>	<p>Leon County Tallahassee, FL</p>
<p>State Logistics Response Center (SLRC) , State LSA , 2702 Directors Row , , Orlando , FL 32809</p> <p>USNG: 17R MM 58770 48121</p>	<p>Monday: 0700 EDT - 1900 EDT Tuesday: 0700 EDT - 1900 EDT Wednesday: 0700 EDT - 1900 EDT Thursday: 0700 EDT - 1900 EDT Friday: 0700 EDT - 1900 EDT Saturday: 0700 EDT - 1900 EDT Sunday: 0700 EDT - 1900 EDT</p>	<p>Connie Nunn Phone: 850-528-7517</p>	<p>Orange County</p>
<p>Marianna Municipal Airport , State LSA , 3689 Industrial Park Drive , Marianna , FL 32446</p> <p>USNG: 16R FV 73906 12748</p>	<p>Monday: 0700 EDT - 1900 EDT Tuesday: 0700 EDT - 1900 EDT Wednesday: 0700 EDT - 1900 EDT Thursday: 0700 EDT - 1900 EDT Friday: 0700 EDT - 1900 EDT Saturday: 0700 EDT - 1900 EDT Sunday: 0700 EDT - 1900 EDT</p>	<p>Bob Johnson Phone: 678-491-4328</p>	<p>Jackson County</p>
<p>Suwannee Valley State Farmer's Market , State LSA , 2920 County Road 136 , White Spring , FL 32096</p> <p>USNG: 17R LP 26628 55596</p>	<p>Monday: 0700 EDT - 1900 EDT Tuesday: 0700 EDT - 1900 EDT Wednesday: 0700 EDT - 1900 EDT Thursday: 0700 EDT - 1900 EDT Friday: 0700 EDT - 1900 EDT Saturday: 0700 EDT - 1900 EDT Sunday: 0700 EDT - 1900 EDT</p>	<p>Mike Anama Phone: 646-248-0790</p>	<p>Hamilton County</p>
<p>Tallahassee Regional Airport , FSA , 3300 Capital Circle. SW , Tallahassee , FL 32310</p> <p>USNG: 16R GU 54818 65849</p>	<p>Monday: 0700 EDT - 1900 EDT Tuesday: 0700 EDT - 1900 EDT Wednesday: 0700 EDT - 1900 EDT Thursday: 0700 EDT - 1900 EDT Friday: 0700 EDT - 1900 EDT Saturday: 0700 EDT - 1900 EDT Sunday: 0700 EDT - 1900 EDT</p>	<p>Jeff Glass Phone: 202-717-0368</p>	<p>Leon County</p>
<p>Federal Staging Area 2 , FSA , 12000 Beachfront Road , Panama City Beach , FL 32407</p> <p>USNG: 16R FU 1298 4042</p>	<p>Monday: 0700 EDT - 1900 EDT Tuesday: 0700 EDT - 1900 EDT Wednesday: 0700 EDT - 1900 EDT Thursday: 0700 EDT - 1900 EDT Friday: 0700 EDT - 1900 EDT Saturday: 0700 EDT - 1900 EDT Sunday: 0700 EDT - 1900 EDT</p>	<p>Leo Montalvo Phone: 720-245-1555</p>	<p>Bay County</p>

<p align="center">Duke Field , ISB , 4300 77th Special Forces , Eglin AFB , FL 32536</p> <p>USNG: 16R EV 39810 03295</p>	<p>Monday: 0700 EDT - 1900 EDT Tuesday: 0700 EDT - 1900 EDT Wednesday: 0700 EDT - 1900 EDT Thursday: 0700 EDT - 1900 EDT Friday: 0700 EDT - 1900 EDT Saturday: 0700 EDT - 1900 EDT Sunday: 0700 EDT - 1900 EDT</p>	<p align="center">Bob Johnson</p> <p>Phone: 678-491-4328</p>	<p align="center">N/A</p>
<p align="center">Craig Field , ISB , 600 West Park Dr , Selma , AL 36701</p> <p>USNG: 16S DA 99357 81657</p>	<p>Monday: 0000 EDT - 2359 EDT Tuesday: 0000 EDT - 2359 EDT Wednesday: 0000 EDT - 2359 EDT Thursday: 0000 EDT - 2359 EDT Friday: 0000 EDT - 2359 EDT Saturday: 0000 EDT - 2359 EDT Sunday: 0000 EDT - 2359 EDT</p>	<p align="center">Jeff Daniels</p> <p>Phone: 615-946-6066</p>	<p align="center">N/A</p>
<p align="center">MCLB Albany , ISB , 2917 Fleming Rd , Albany , GA 31705-3913</p> <p>USNG: 16R GV 77483 93562</p>	<p>Monday: 0700 EDT - 1900 EDT Tuesday: 0700 EDT - 1900 EDT Wednesday: 0700 EDT - 1900 EDT Thursday: 0700 EDT - 1900 EDT Friday: 0700 EDT - 1900 EDT Saturday: 0700 EDT - 1900 EDT Sunday: 0700 EDT - 1900 EDT</p>	<p align="center">Mickey Owens</p> <p>Phone: 256-223-1793</p>	<p align="center">N/A</p>
<p align="center">USACE Recovery Field Office , Recovery Field Office , 4635 Gulfstar Drive , Destin , FL 32541</p> <p>USNG: 16R EU 56327 61868</p>	<p>Monday: 0700 EDT - 1900 EDT Tuesday: 0700 EDT - 1900 EDT Wednesday: 0700 EDT - 1900 EDT Thursday: 0700 EDT - 1900 EDT Friday: 0700 EDT - 1900 EDT Saturday: 0700 EDT - 1900 EDT Sunday: 0700 EDT - 1900 EDT</p>	<p align="center">LTC Gussenhoven</p> <p>Phone: 646-540-0266</p>	<p align="center">Okaloosa County</p>
<p align="center">DRC #1 - Wakulla County Community One Stop , DRC , 318 Shadeville Highway , Crawfordville , FL 32327</p> <p>USNG: 16R GU 54084 42051</p>	<p>Monday: 0800 EDT - 1900 EDT Tuesday: 0800 EDT - 1900 EDT Wednesday: 0800 EDT - 1900 EDT Thursday: 0800 EDT - 1900 EDT Friday: 0800 EDT - 1900 EDT Saturday: 0800 EDT - 1900 EDT Sunday: 0800 EDT - 1900 EDT</p>	<p align="center">Isabella Coleman</p> <p>Phone: 941-321-4604</p>	<p align="center">Wakulla County</p>
<p align="center">DRC #2 - Carrabelle Public Library , DRC , 311 Saint James Avenue , Carrabelle , FL 32322</p> <p>USNG: 16R GU 25883 04485</p>	<p>Monday: 0800 EDT - 1900 EDT Tuesday: 0800 EDT - 1900 EDT Wednesday: 0800 EDT - 1900 EDT Thursday: 0800 EDT - 1900 EDT Friday: 0800 EDT - 1900 EDT Saturday: 0800 EDT - 1900 EDT Sunday: 0800 EDT - 1900 EDT</p>	<p align="center">Claudette Coyle</p> <p>Phone: 256-454-4496</p>	<p align="center">Franklin County</p>
<p align="center">DRC #3 - University Extension Office , DRC , 2737 Penn Avenue , Marianna , FL 32448</p> <p>USNG: 16R FV 67046 04860</p>	<p>Monday: 0800 EDT - 1900 EDT Tuesday: 0800 EDT - 1900 EDT Wednesday: 0800 EDT - 1900 EDT Thursday: 0800 EDT - 1900 EDT Friday: 0800 EDT - 1900 EDT Saturday: 0800 EDT - 1900 EDT Sunday: 0800 EDT - 1900 EDT</p>	<p align="center">Bias Anes</p> <p>Phone: 202-631-9411</p>	<p align="center">Jackson County</p>

<p>DRC #4 - LeRoy Collins Main Library , DRC , 200 W. Park Avenue , Tallahassee , FL 32301</p> <p>USNG: 16R GU 60856 70923</p>	<p>Monday: 0800 EDT - 1900 EDT Tuesday: 0800 EDT - 1900 EDT Wednesday: 0800 EDT - 1900 EDT Thursday: 0800 EDT - 1900 EDT Friday: 0800 EDT - 1900 EDT Saturday: 0800 EDT - 1900 EDT Sunday: 0800 EDT - 1900 EDT</p>	<p>Patricia Lewis Phone: 202-506-0859</p>	<p>Leon County</p>
<p>DRC #5 - AG Center , DRC , 1173 E Hwy 90 , Bonifay , FL 32425</p> <p>USNG: 16R FV 28032 06790</p>	<p>Monday: 0800 EDT - 1900 EDT Tuesday: 0800 EDT - 1900 EDT Wednesday: 0800 EDT - 1900 EDT Thursday: 0800 EDT - 1900 EDT Friday: 0800 EDT - 1900 EDT Saturday: 0800 EDT - 1900 EDT Sunday: 0800 EDT - 1900 EDT</p>	<p>Filiberto Miranda-Boyer Phone: 202-717-1476</p>	<p>Holmes County</p>
<p>DRC #6 - Washington County AG Center , DRC , 1424 W. Jackson Avenue , Chipley , FL 32428</p> <p>USNG: 16R FV 38629 05834</p>	<p>Monday: 0800 EDT - 1900 EDT Tuesday: 0800 EDT - 1900 EDT Wednesday: 0800 EDT - 1900 EDT Thursday: 0800 EDT - 1900 EDT Friday: 0800 EDT - 1900 EDT Saturday: 0800 EDT - 1900 EDT Sunday: 0800 EDT - 1900 EDT</p>	<p>Michelle Andrews Phone: 202-718-3698</p>	<p>Washington County</p>
<p>DRC #7 - (Old) Gretna Elementary School , DRC , 706 Martin Luther King Jr, Blvd , Gretna , FL 32332</p> <p>USNG: 16R GU 24696 88309</p>	<p>Monday: 0800 EDT - 1900 EDT Tuesday: 0800 EDT - 1900 EDT Wednesday: 0800 EDT - 1900 EDT Thursday: 0800 EDT - 1900 EDT Friday: 0800 EDT - 1900 EDT Saturday: 0800 EDT - 1900 EDT Sunday: 0800 EDT - 1900 EDT</p>	<p>James O'Neill Phone: 609-508-2200</p>	<p>Gadsden County</p>
<p>DRC #8 - Veterans Memorial Park , DRC , 10405 NW Theo Jacobs Way , Bristol , FL 32321</p> <p>USNG: 16R FU 94215 67375</p>	<p>Monday: 0800 EDT - 1900 EDT Tuesday: 0800 EDT - 1900 EDT Wednesday: 0800 EDT - 1900 EDT Thursday: 0800 EDT - 1900 EDT Friday: 0800 EDT - 1900 EDT Saturday: 0800 EDT - 1900 EDT Sunday: 0800 EDT - 1900 EDT</p>	<p>Karen Smith Phone: 202-664-9619</p>	<p>Liberty County</p>
<p>BRC 1 - Wakulla County Community Center , BRC , 322 Shadeview Highway , Crawfordsville , FL 32327</p> <p>USNG: 16R GU 57579 44268</p>	<p>Monday: 1100 EDT - 1800 EDT Tuesday: 0900 EDT - 1800 EDT Wednesday: 0900 EDT - 1800 EDT Thursday: 0900 EDT - 1800 EDT Friday: 0900 EDT - 1800 EDT Saturday: 0900 EDT - 1800 EDT Sunday: Closed</p>	<p>Eric Shaw Phone: 404-895-8439</p>	<p>Wakulla County</p>
<p>BRC 2 - Super Pufft Snacks , BRC , 700 West Lance Drive , Perry , FL 32348</p> <p>USNG: 17R KP 50876 33398</p>	<p>Monday: 1100 EDT - 1800 EDT Tuesday: 0900 EDT - 1800 EDT Wednesday: 0900 EDT - 1800 EDT Thursday: 0900 EDT - 1800 EDT Friday: 0900 EDT - 1800 EDT Saturday: 0900 EDT - 1800 EDT Sunday: Closed</p>	<p>Eric Shaw Phone: 404-895-8439</p>	<p>Taylor County</p>

BRC 3 - Franklin County Public Library , BRC , 311 St. James Avenue , Carabelle , FL 32322 USNG: 16R GU 25883 04485	Monday: 0900 EDT - 1800 EDT Tuesday: 0900 EDT - 1800 EDT Wednesday: 0900 EDT - 1800 EDT Thursday: 0900 EDT - 1800 EDT Friday: 0900 EDT - 1800 EDT Saturday: 0900 EDT - 1800 EDT Sunday: Closed	Eric Shaw Phone: 404-895-8439	Franklin County
BRC 4 - Veteran Memorial Civic Center , BRC , 10561 NW Theo Jacobs Way , Bristol , FL 32321 USNG: 16R FU 94254 67375	Monday: 0900 EDT - 1800 EDT Tuesday: 0900 EDT - 1800 EDT Wednesday: 0900 EDT - 1800 EDT Thursday: 0900 EDT - 1800 EDT Friday: 0900 EDT - 1800 EDT Saturday: 0900 EDT - 1800 EDT Sunday: Closed	Eric Shaw Phone: 404-895-8439	Liberty County
BRC 5 - Gulf Franklin Center of GCSC , BRC , 3800 Garrison Avenue , Port St. Joe , FL 32456 USNG: 16R FT 66118 95379	Monday: 0900 EDT - 1800 EDT Tuesday: 0900 EDT - 1800 EDT Wednesday: 0900 EDT - 1800 EDT Thursday: 0900 EDT - 1800 EDT Friday: 0900 EDT - 1800 EDT Saturday: 1000 EDT - 1400 EDT Sunday: Closed	Eric Shaw Phone: 404-895-8439	Gulf County
BRC 6 - Washington County Chamber of Commerce , BRC , 672 5th Street , Chipley , FL 32428 USNG: 16R FV 39715 06283	Monday: 0900 EDT - 1800 EDT Tuesday: 0900 EDT - 1800 EDT Wednesday: 0900 EDT - 1800 EDT Thursday: 0900 EDT - 1800 EDT Friday: 0900 EDT - 1800 EDT Saturday: 1000 EDT - 1400 EDT Sunday: Closed	Eric Shaw Phone: 404-895-8439	Washington County
MBRC 1a - Bay County City Job Center , BRC , 625 Highway 231 , Panama City , FL 32405 USNG: 16R FU 29785 39676	Monday: 0900 EDT - 1800 EDT Tuesday: 0900 EDT - 1800 EDT Wednesday: 0900 EDT - 1800 EDT Thursday: 0900 EDT - 1800 EDT Friday: 0900 EDT - 1800 EDT Saturday: 0900 EDT - 1800 EDT Sunday: Closed	Mike Myhre Phone: 850-898-3479	Bay County Mobile BRC
MBRC 2a - Blountstown Center , BRC , 16908 NE Pear Street , Blountstown , FL 32424 USNG: 16R FU 87730 69709	Monday: 0900 EDT - 1800 EDT Tuesday: 0900 EDT - 1800 EDT Wednesday: 0900 EDT - 1800 EDT Thursday: 0900 EDT - 1800 EDT Friday: 0900 EDT - 1800 EDT Saturday: 1000 EDT - 1400 EDT Sunday: Closed	Eric Shaw Phone: 404-895-8439	Calhoun County Mobile BRC

Command

Position	S T R A I T B E	F E M A	O F A	Name	Phone	Work Email
State Coordinating Officer	X			Wes Maul	407-375-2844	wesley.maul@em.myflorida.com
SERT Chief	X			Leo Lachat	850-815-4201	leo.lachat@em.myflorida.com
Deputy SERT Chief	X			Kevin Guthrie	850-815-4840	kevin.guthrie@em.myflorida.com
Federal Coordinating Officer		X		Thomas J. McCool	303-548-2493	thomas.mccool@fema.dhs.gov
Deputy Federal Coordinating Officer		X		Fredrick Choi	202-802-3159	fredrick.choi@fema.dhs.gov

Deputy Federal Coordinating Officer for Response		X		Thomas Fargione	202-441-7409	thomas.fargione@fema.dhs.gov
Federal Disaster Recovery Coordinator		X		Sandra Eslinger	202-834-4472	sandra.eslinger@fema.dhs.gov
Defense Coordinating Officer			X	COL Robert Ashe	706-358-9897	robert.p.ashe.mil@mail.mil

Interagency Recovery Coordination

Position	S t r a i t b e e	F E M A	O F A	Name	Phone	Work Email
----------	---	------------------	-------------	------	-------	------------

Command Staff

Position	S t r a i t b e e	F E M A	O F A	Name	Phone	Work Email
Chief Of Staff		X		Raymond Hetherington	404-695-1407	raymond.hetherington@fema.dhs.gov
Deputy Chief of Staff		X		Faye Sellers	202-716-1016	faye.sellers@fema.dhs.gov
FCO Executive Assistant		X		Margaret Martinez Roman	202-417-5825	margaret.martinez@fema.dhs.gov
Lead Legal Advisor	X			Jaxon Lear	850-694-6620	Jaxon.lear@em.myflorida.com
Legal Advisor		X		Sean Nguyen	202-679-7929	sean.nguyen@fema.dhs.gov
Equal Rights Advisor		X		Jeanne Large	609-508-2232	jeanne.large@fema.dhs.gov
Lead Safety Officer		X		James "Casey" Platt	870-315-0871	James.Platt@fema.dhs.gov
Security Manager		X		Robert Smith	202-706-0127	robert.smith.2@fema.dhs.gov
Disability Integration Advisor		X		George Kasper	202-704-8153	george.kasper@fema.dhs.gov
Environmental and Historic Preservation Advisor		X		Holly Pelt	407-913-8067	holly.pelt@fema.dhs.gov
Alternative Dispute Resolution Advisor		X		Noel L. Miner	609-508-2236	Noel.Miner@fema.dhs.gov
Public Information Officer	X			Andrew Wilbur	850-591-0428	andrew.wilbur@em.myflorida.com
External Affairs Officer		X		Mary Hudak	770-220-5226	Mary.Hudak@fema.dhs.gov
Deputy External Affairs Officer		X		Richard Krikava	202-445-8820	Richard.Krikava@fema.dhs.gov
Assistant External Affairs Officer - Intergovernmental Affairs		X		James Woodard	202-826-3213	james.woodard@fema.dhs.gov
Assistant External Affairs Officer - Congressional Affairs		X		Jody Bruckner	304-542-6249	jody.bruckner@fema.dhs.gov
Assistant External Affairs Officer - Products and Planning		X		Robert Hoffman	720-415-6503	robert.hoffman3@fema.dhs.gov
Field Support Unit Lead		X		Amber Manko	202-714-8479	amber.manko@fema.dhs.gov

Operations

Position	S t r a i t b e e	F E M A	O F A	Name	Phone	Work Email
Operations Section Chief	X			Ashley Davis	850-544-8373	ashley.davis@em.myflorida.com
Operations Section Chief		X		Dominique Lenox	312-408-5322	dominique.lenox@fema.dhs.gov
Deputy Operations Section Chief	X			Sam Walters	850-815-4806	sam.walters@em.myflorida.com
Assistant OSC for Geographic Operations		X		Tim Britt	202-710-6630	timothy.britt@fema.dhs.gov
Mission Assignment Manager		X		Tracie Johnston	718-570-4716	tracie.johnston@fema.dhs.gov

State Branch I Director	X			Billy Estep	904-813-3476	bestep@nassauso.com
Branch I Director		X		Chris Allen	540-532-0476	Christopher.allen@fema.dhs.gov
Bay County Division Supervisor	X			Gina Lambert	850-591-3855	N/A
Bay County Division Supervisor		X		Donald Clark	202-716-6424	donald.clark@fema.dhs.gov
Bay County Division Supervisor		X		Jazmyn Ortiz	202-714-3029	jazmyn.ortiz@fema.dhs.gov
Gulf County Division Supervisor	X			Jerry Brown	727-244-3338	N/A
Gulf County Division Supervisor		X		John Ford	202-709-1361	john.ford@fema.dhs.gov
Gulf County Division Supervisor		X		Nicole Pfaendler	202-704-4028	nicole.pfaendler@fema.dhs.gov
State Branch II Director	X			Wanda Stafford	850-528-7525	Wanda.stafford@osceola.org
Branch II Director		X		Pam Zawada	617-794-9845	pamela.zawada@fema.dhs.gov
Holmes County Division Supervisor	X			SFC Paul Abel	321-684-2188	N/A
Holmes County Division Supervisor		X		Rita Bazazzadeh	202-316-7842	rita.bazazzadeh@fema.dhs.gov
Washington County Division Supervisor	X			SSG Andre Green	281-840-6754	N/A
Washington County Division Supervisor		X		Larry Pigg	202-531-2376	larry.pigg@fema.dhs.gov
State Branch III Director	X			Nigel Baker	561-308-4102	nbaker@pbcgov.org
Branch III Director		X		Timothy Manner	202-531-9544	timothy.manner@fema.dhs.gov
Calhoun County Division Supervisor	X			SSG Forrest Benham	941-405-2986	N/A
Calhoun County Division Supervisor		X		John Fenn	404-583-5055	john.fenn@fema.dhs.gov
Calhoun County Division Supervisor		X		Michael Riley	202-702-7153 / 8816-3169-2860 (Sat.)	michael.riley@fema.dhs.gov
Gadsden County Division Supervisor	X			SSG Glenn Moralestorres	813-735-0042	N/A
Gadsden County Division Supervisor		X		Paul Williams	229-977-4172	paul.williams6@fema.dhs.gov
Gadsden County Division Supervisor		X		Jon Huss	202-706-0452	jon.huss@fema.dhs.gov
Jackson County Division Supervisor	X			SSG Eugenia Booth	904-599-6579	N/A
Jackson County Division Supervisor		X		Dennis Mangioni	202-718-3877	dennis.mangioni@fema.dhs.gov
Jackson County Division Supervisor		X		Glenn Bowles	202-288-6204	glenn.bowlesii@fema.dhs.gov
Liberty County Division Supervisor	X			SGT Donald Sanchez	352-283-1208	N/A
Liberty County Division Supervisor		X		William Roberts	816-621-9535	william.roberts@fema.dhs.gov
Liberty County Division Supervisor		X		Donald Price	916-715-9669	donald.price@fema.dhs.gov
State Branch IV Director	X			Willie Bouie	850-519-1469	Willie.Bouie@em.myflorida.com
Branch IV Director		X		Thomas Dargan	330-980-6646	thomas.dargan@fema.dhs.gov

Franklin County Division Supervisor	X			Brian Bradshaw	850-519-8639	brian.bradshaw@em.myflorida.com
Franklin County Division Supervisor		X		Jasmin Cesko	202-704-8174 / 8816-3255-4429 (Sat.)	jasmin.cesko@fema.dhs.gov
Wakulla County Division Supervisor	X			SGT Joshua Freed	941-524-9461	N/A
Wakulla County Division Supervisor		X		Thomas Raymann	202-733-0344	thomas.raymann@fema.dhs.gov
Wakulla County Division Supervisor		X		Sean Brinson	202-704-0809	sean.brinson@fema.dhs.gov
Leon County Division Supervisor		X		Donald Wenschhof	202-655-8821	donald.wenschhofiii@fema.dhs.gov
Leon County Division Supervisor		X		Patrick Cornbill	917-331-2488	patrick.cornbill@fema.dhs.gov
Branch V Director		X		Thomas Dargan	425-487-4603 / 8816-3256-6386 (Sat)	thomas.dargan@fema.dhs.gov
Taylor County Division Supervisor		X		Thomas Raymann	202-733-0344	thomas.raymann@fema.dhs.gov
Human Services Branch Director	X			Pam Hughes	850-815-4111	pam.hughes@em.myflorida.com
Individual Assistance Branch Director	X			Page Merkison	850-510-7912	page.merkison@em.myflorida.com
Individual Assistance Branch Director		X		Carmalla Coley	202-674-6331	carmalla.coley@fema.dhs.gov
Deputy Individual Assistance Officer	X			Elizabeth Roberts	850-524-8143	elizabeth.roberts@em.myflorida.com
Deputy Individual Assistance Branch Director		X		Angela Grant	202-705-9750	angela.grant@fema.dhs.gov
Individual Assistance VAL Group Supervisor		X		William Layer Jr	202-657-1612	william.layerjr@fema.dhs.gov
Information Management Group Supervisor	X			Lynne Stickley	850-524-1000	IA_InformationManager@em.myflorida.com
Individual Assistance Mass Care/Emergency Assistance Group Supervisor		X		James Fumbanks	202-815-3017	James.Fumbanks@fema.dhs.gov
Information Management Group Supervisor		X		Veronica Herford	425-892-5292	nika.herford@fema.dhs.gov
DRC Coordinator	X			Brian Nelson	850-559-0981	N/A
DRC Group Supervisor		X		Winnie Carpenter	202-320-8498	winnie.carpenter@fema.dhs.gov
Housing Coordinator	X			Sandy Lanier	850-599-7338	sandy.lanier@em.myflorida.com
TSA/Mass Care Coordinator	X			Dan Porter	850-443-0601	daniel.porter@em.myflorida.com
Unmet Needs Coordinator	X			Amanda Brodie	850-559-1483	amanda.brodie@em.myflorida.com
SBA Officer in Charge			X	Eric Shaw	404-895-8439	eric.shaw@sba.gov
Voluntary Agency Liaison		X		Joy Grahn	202-706-0079	joy.grahn@fema.dhs.gov
ESF 06 Mass Care	X			Peter Newman	850-717-1522	peter.newman@myfloridalicense.com
Red Cross LNO to State EOC			X	Cesar Rivera	404-858-7049	cesar.rivera@redcross.org
ESF 11 Food and Water	X			Dexter Harris	850-617-7444	dexter.harris@freshfromflorida.com
ESF 15 Volunteers and Donations	X			Ken Skalitzky	850-414-7400	ken@volunteerflorida.org

ESF 17 Animal Protection	X			Greg Christy	850-321-9830	gregory.christy@freshfromflorida.com
Infrastructure Branch Director	X			Paul Holloway	617-626-2954	paul.holloway@state.ma.us
Infrastructure Branch Director		X		Manuel Barrios	202-779-0318	manuel.barrios@fema.dhs.gov
Deputy Infrastructure Branch Director		X		Sidney Melton	940-208-4566	sidney.melton@fema.dhs.gov
Public Assistance Group Supervisor		X		Annie "LeAnne" Ford	850-445-4543	annie.ford@fema.dhs.gov
ESF 01/03 Transportation/Public Works	X			Irene Cabral	850-414-5336	irene.cabral@dot.state.fl.us
ESF 01 Transportation			X	Paul Hesse	518-368-9452	paul.hesse@dot.gov
ESF 02 Communications	X			Hank Stephens	N/A	hank.stephens@dms.myflorida.com
ESF 02 Communications		X		Michael Foster	202-316-2797	michael.foster@fema.dhs.gov
MERS Coordinator		X		Greg Paquette	229-425-6686	gregory.paquette@fema.dhs.com
ESF 10 EPA			X	Johnnie Purify	770-324-0957	Purify.Johnnie@epa.gov
ESF 03 Public Works and Engineering			X	Michelle Shafer	202-510-0886	michelle.m.shafer@usace.army.mil
ESF 12 Energy (Fuel)	X			Debbie Bass	850-815-4207	debbie.bass@em.myflorida.com
ESF 12 Energy (Power)	X			Rory Spangler	N/A	rory.spangler@psc.state.fl.usa.
ESF 12 Energy (Power)			X	Bill Edwards	509-572-0371	william_f_edwards@rl.gov
DHS IP LNO			X	Billy Sasser	850-420-8944	billy.sasser@HQ.DHS.GOV
USGS LNO (Virtual)			X	Anna Stull	720-498-5600	astull@usgs.gov
Hazard Mitigation Branch Director	X			Miles Anderson	850-815-4501	Miles.Anderson@em.myflorida.com
Hazard Mitigation Branch Director		X		Laura McSweeney	425-492-4364	laura.mcsweeney@fema.dhs.gov
Deputy Hazard Mitigation Branch Director		X		Jose Mateo Morel	816-398-3302	jose.mateomorel@fema.dhs.gov
HM Program Group Supervisor		X		Shirley Matthews	202-802-2179	Shirley.Matthews@fema.dhs.gov
DSA Coordinator	X			Lisa Oien	239-821-6457	ia_dsacoordinator@em.myflorida.com
Disaster Survivor Assistance Branch Director		X		Toby Rice	225-892-8090	toby.rice@fema.dhs.gov
Emergency Services Branch Director	X			Alan Harris	N/A	alan.harris@em.myflorida.com
Deputy Emergency Services Branch Director	X			Kim Sharkey	850-528-8976	kimberly.sharkey@em.myflorida.com
Emergency Services Branch Director		X		Victor Ceglie	202-655-8510	victor.ceglic@fema.dhs.gov
ESF 08 Health and Medical	X			Christie Luce	850-245-4562	christie.luce@flhealth.gov
ESF 08 Health and Medical			X	Jeanne Eckes	404-772-9701	jeanne.eckes@hhs.gov
ESF 08 Health and Medical			X	Charles Weir	404-772-1018	charles.weir@hhs.gov
ESF 04/09 Firefighting/Search and Rescue	X			Wayne Watts	850-381-6941	wayne.watts@myfloridacfo.com
ESF 10 Hazmat	X			Nick Roff	850-491-5482	nick.roff@floridadep.gov
ESF 10 EPA Hazardous Materials			X	Chris Russell	N/A	Russell.Chris@epa.gov
ESF 10 USCG Hazardous Materials			X	LCDR Todd Remusat	407-257-6099	todd.a.remusat@uscg.mil

ESF 16 Law Enforcement	X			Harvey Jones	850-410-7067	harveyjones@fdle.state.fl.us
ESF 13 Military Affairs	X			MAJ Melissa DeLeon	850-251-0962	melissa.e.deleon@mail.mil
ESF 13 Public Safety and Security			X	Daniel Cornwell	913-307-6269	Daniel.Cornwell@atf.gov

Logistics

Position	S T r a i t b e e	F E M A	O F A	Name	Phone	Work Email
Logistics Section Chief	X			Andrew Baxter	N/A	andrew.baxter@em.myflorida.com
Logistics Section Chief		X		Rod McAllister	202-384-6443	rodriqus.mcallister@fema.dhs.gov
Deputy Logistics Section Chief	X			LTC Steven Knox	850-815-4904	EOC- LogPlans@em.myflorida.com
Deputy Logistics Section Chief		X		Robert McDougald	703-254-7701	robert.mcdougald@fema.dhs.gov
Support Branch Director		X		Eric Dixon	347-626-9233	eric.dixon@fema.dhs.gov
Logistics Facilities Unit leader		X		Steven Ryberg	609-433-6825	steve.ryberg@fema.dhs.gov
Ordering Unit Leader		X		Roxana Riojas	202-262-6387	roxana.riojas@fema.dhs.gov
Service Branch Director		X		Kimberly Dargan	202-821-3822	kimberly.dargan@fema.dhs.gov
Communications Unit Leader		X		Jeremy Nowell	228-239-0408	jeremy.nowell@fema.dhs.gov
External Support Branch Director		X		Jeff Cole	202-550-4411	jeffery.cole@fema.dhs.gov
Federal Staging Area Unit Leader		X		Robert Jones (RJ)	940-898-5565	Robert.Jones8@fema.dhs.gov
Fuel Management Officer/DRCs		X		Dan Green	202-538-2710	daniel.green@fema.dhs.gov
GSA LNO			X	Arrion J. Moore	404-272-7988	arrion.moore@gsa.gov

Planning

Position	S T r a i t b e e	F E M A	O F A	Name	Phone	Work Email
Planning Section Chief	X			Ryan Lock	850-815-4303	ryan.lock@em.myflorida.com
Planning Section Chief (Night)	X			Glen Hammers	850-591-9947	glen.hammers@em.myflorida.com
Planning Section Chief		X		Jordan Nelms	540-247-6292	jordan.nelms@fema.dhs.gov
Deputy Planning Section Chief	X			Wendy Reynolds	850-815-4317	wendy.reynolds@em.myflorida.com
Deputy Planning Section Chief		X		Matthew Trainor	202-394-8587	matthew.trainor@fema.dhs.gov
Deputy Planning Section Chief		X		David Clay	907-787-9192	david.clay@fema.dhs.gov
Situation Unit Leader	X			Drew Sussman	N/A	drew.sussman@em.myflorida.com
Situation Unit Leader (Night)	X			Chris Stevens	850-445-3511	chris.stevens@em.myflorida.com
Situation Unit Leader		X		Kat Hisek	202-705-6048	kathryn.hisek@fema.dhs.gov
Resources Unit Leader		X		Jose Lizama	202-394-3388	jose.lizama@fema.dhs.gov
Documentation Unit Leader	X			Amy Peterson	850-567-7491	amy.peterson@em.myflorida.com
Documentation Unit Leader		X		Shirlene Ricard	504-458-4701	shirlene.ricard@fema.dhs.gov
Planning Support Unit Leader		X		Robert Coley	732-208-6199	robert.coley@fema.dhs.gov
GIS Unit Leader		X		Matthew Welshans	202-710-2262	matthew.welshans@fema.dhs.gov
Analytics Unit Leader		X		Gibran Esa	202-735-4090	gibran.esa@fema.dhs.gov
Future Planning Unit Leader		X		J.D. Boesch	202-573-4820	john.boesch@fema.dhs.gov

Finance & Administration

Position	S t r i t b e e	F E M A	O F A	Name	Phone	Work Email
Finance and Administration Section Chief	X			Dawna Johnson	N/A	dawna.johnson@em.myflorida.com
Finance and Administration Section Chief (Orlando)		X		William Hamrick	202-815-7555	William.Hamrick@fema.dhs.gov
Finance and Administration Deputy Section Chief (Orlando)		X		Winsome Reid	202-821-8967	winsome.reid@fema.dhs.gov
Finance and Administration Deputy Section Chief (Orlando)		X		Marcie Mosley	202-754-1957	marcie.mosley@fema.dhs.gov
Travel Manager		X		Jesse Perea	202-739-1838	jesse.perea@fema.dhs.gov
Human Resource Unit Leader		X		Treva Horton- Baker	202-718-3908	treva.horton-baker@fema.dhs.gov
4. Prepared by: Jose Lizama Date/Time: 10/24/2018 1400 EDT				5. Reviewed by: David Clay Date/Time: 10/24/2018 1400 EDT		

**ICS 207
COMMAND & GENERAL STAFF
ORGANIZATION CHART**

1. Incident Name
DR-4399-FL
Hurricane Michael

2. Date/Time Prepared
10/24/2018
1600 EDT

3. Operational Period Date/Time
0700 EDT 10/25/2018 to
0700 EDT 10/26/2018



State Coordinating Officer
Wes Maul (S)
Deputy SCO: Michael Kennett (S)
SERT Chief
Leo Lachat (S)
Deputy SERT Chief
Kevin Guthrie (S)

Federal Coordinating Officer
Thomas McCool (F)
Deputy Federal Coordinating Officer
Fred Choi (F)
Deputy FCO For Response
Tom Fargione (F)
Federal Disaster Recovery Coordinator
Sandra Eslinger (F)
Defense Coordinating Officer
COL Robert Ashe (O)

Public Information Officer: Andrew Wilbur (S)
External Affairs Officer: Mary Hudak (F)
Deputy EAO: Richard Krikava (F)
Assistant EAO - Congressional Affairs: Jody Bruckner (F)
Assistant EAO - Planning and Products: Robert Hoffman (F)
Assistant EAO - Intergovernmental Affairs: James Woodard (F)

Chief of Staff: Ray Hetherington (F)
Deputy Chief of Staff: Faye Sellers (F)
Executive Assistant: Margaret Martinez Roman (F)
Lead Legal Advisor: Jaxon Lear (S), Sean Nguyen (F)
Lead Safety Officer: James Platt (F)
Security Manager: Robert Smith (F)
Disability Integration Advisor: George Kasper (F)
Alternative Dispute Resolution Advisor: Noel Miner (F)
Environmental Historic Preservation Advisor: Holly Pelt (F)
Equal Rights Advisor: Jeanne Large (F)
Field Support Unit Lead: Amber Manko (F)

Operations Section Chief
Ashley Davis (S)
Dominique Lenox (F)
Deputy Operations Section Chief
Sam Walters (S)
Axel Runtschke (S)
Assistant OSC for Geographic Operations
Tim Britt (F)

See Operations Org Chart

Logistics Section Chief
Andrew Baxter (S)
Rod McAllister (F)
Deputy Logistics Section Chief
LTC Steven Knox (S)
Robert McDougald (F)

Service Branch Director
Kim Dargan (F)

Communications Unit Lead
Jeremy Nowell (F)

External Support Branch Director
Jeff Cole (F)

Fuel Management Officer/DRCs
Dan Green (F)

FSA Unit Lead
Robert Jones (F)

Support Branch Director
Eric Dixon (F)

Ordering Unit Lead
Roxana Riojas (F)

Facilities Unit Lead
Steve Ryberg (F)

GSA LNO
Arrion J. Moore (O)

Planning Section Chief
Ryan Lock (S)
Jordan Nelms (F)
Deputy Planning Section Chief
Wendy Reynolds (S)
David Clay (F)
Matt Trainor (F)

Resources Unit Leader
Jose Lizama (F)

Documentation Unit Leader
Amy Peterson (S)
Shirlene Ricard (F)

Planning Support Unit Leader
Robert Coley (F)

Future Planning Unit Leader
J.D. Boesch (F)

Situation Unit Leader
Drew Sussman (S)
Kat Hisek (F)

GIS Unit Leader
Matt Welshans (F)

Analytics Unit Leader
Gibran Esa (F)

Finance & Admin Section Chief
Dawna Johnson (S)
William Hamrick (F)
Deputy F/A Section Chiefs
Winsome Reid (F)
Marci Moseley (F)
(FEMA personnel in Orlando)

Human Resources Unit Leader
Treva Horton-Baker (F)

Travel Manager
Jesse Perea (F)

**ICS 207
FUNCTIONAL OPERATIONS
ORGANIZATION CHART**

1. Incident Name
DR-4399-FL
Hurricane Michael

2. Date/Time Prepared
10/24/2018
1600 EDT

3. Operational Period Date/Time
0700 EDT 10/25/2018 to
0700 EDT 10/26/2018



Operations Section Chief
Ashley Davis (S)
Dominique Lenox (F)
Deputy Operations Section Chief
Axel Runtschke (S)
Assistant OSC for Geographic Operations
Tim Britt (F)

Mission Assignment Manager
Tracie Johnston (F)

Human Services Branch Director
Pam Hughes (S)
State IA Officer
Page Merkison (S)
Individual Assistance Branch Director
Carmalla Coley (F)
Deputy State IA Officer
Elizabeth Roberts (S)
Deputy IABD
Angela Grant (F)

Infrastructure Branch Director
Paul Holloway (S)
Manny Barrios (F)
Deputy IBD
Sid Melton (F)
Public Assistance Group Supervisor
Annie Ford (F)

Disaster Survivor Assistance Branch Director
Toby Rice (F)

State DSA Coordinator *
Lisa Oien (S)
Linda Miller (S)

Hazard Mitigation Branch Director
Miles Anderson (S)
Laura McSweeney (F)
Deputy HMBD
Jose Mateo Morel (F)

HM Program Group Supervisor
Shirley Matthews (F)

Emergency Services Branch Director
Alan Harris (S)
Victor Ceglie (F)
Deputy ESBD
Kim Sharkey (S)

ESF-6
Peter Newman (S)
Red Cross LNO
Cesar Rivera (O)

ESF-17
Leianna Tucker (S)

DRC Coordinator
Brian Nelson (S)
DRC Group Supervisor
Winnie Carpenter (F)

Unmet Needs Coordinator
Amanda Brodie (S)

Information Group Supervisor
Lynne Stickley (S)
Veronica Herford (F)

ESF-15 (S)
Ken Skalitzky (S)
VAL Group Sup
Bill Layer (F)

Housing Coordinator
Sandy Lanier (S)
Housing Coordinator
TBD (F)

ESF-11
Dexter Harris (S)

SBA OIC
Eric Shaw (O)

TSA/Mass Care Coordinator
Dan Porth (S)
Jim Fumbanks (F)

ESF-1
Irene Cabral (S)
Paul Hesse (O)

ESF-2
Hank Stephens (S)
Michael Foster (F)

MERS Coordinator
Greg Paquette (F)

ESF-3
Irene Cabral-AM (S)
Shelly Shafer (O)

ESF-12 Fuels
Debbie Bass (S)

ESF-12 Power
Robert Graves (S)
Bill Edwards (O)

DHS IP
Billy Sasser (O)

ESF-4
Wayne Watts (S)

ESF-8
Christie Luce (S)
CPT Charles Weir (O)
Jeanne Eckes (O)

ESF-9
Wayne Watts (S)

ESF-10
CDR Johnnie Purify (O)
Chris Russell, EPA (O)

ESF-13 (S)
MAJ Melissa DeLeon (S)

ESF-16 (S)
Harvey Jones (S)
ESF-13 (F)
Dan Cornwell (O)

* State DSA Coordinator falls under Individual Assistance in the State System

**ICS 207
GEOGRAPHIC OPERATIONS
ORGANIZATION CHART**

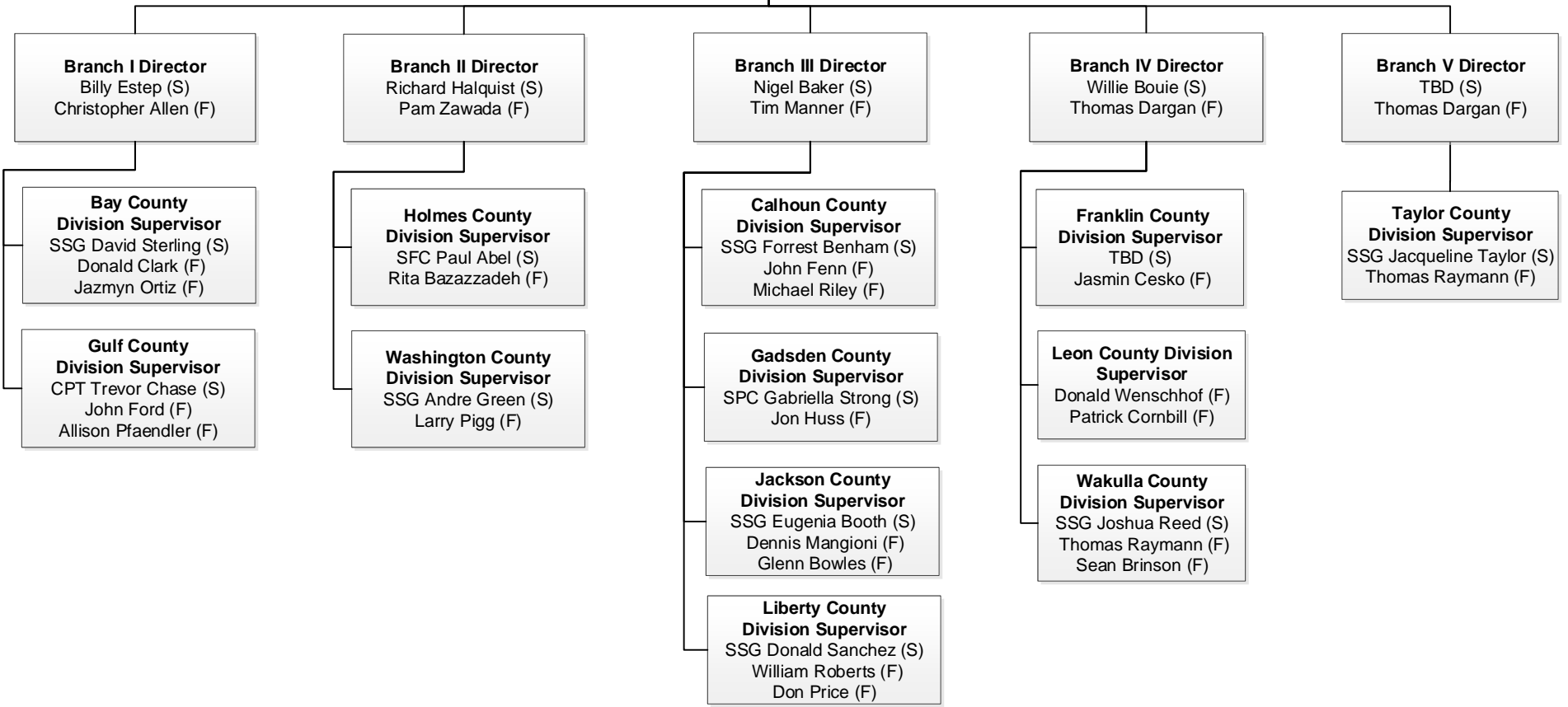
1. Incident Name
DR-4399-FL
Hurricane Michael

2. Date/Time Prepared
10/24/2018
1600 EDT

3. Operational Period Date/Time
0700 EDT 10/25/2018 to
0700 EDT 10/26/2018



**Assistant OSC for
Geographic Operations**
Tim Britt (F)

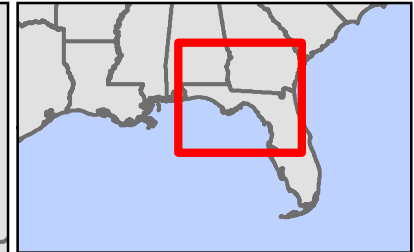
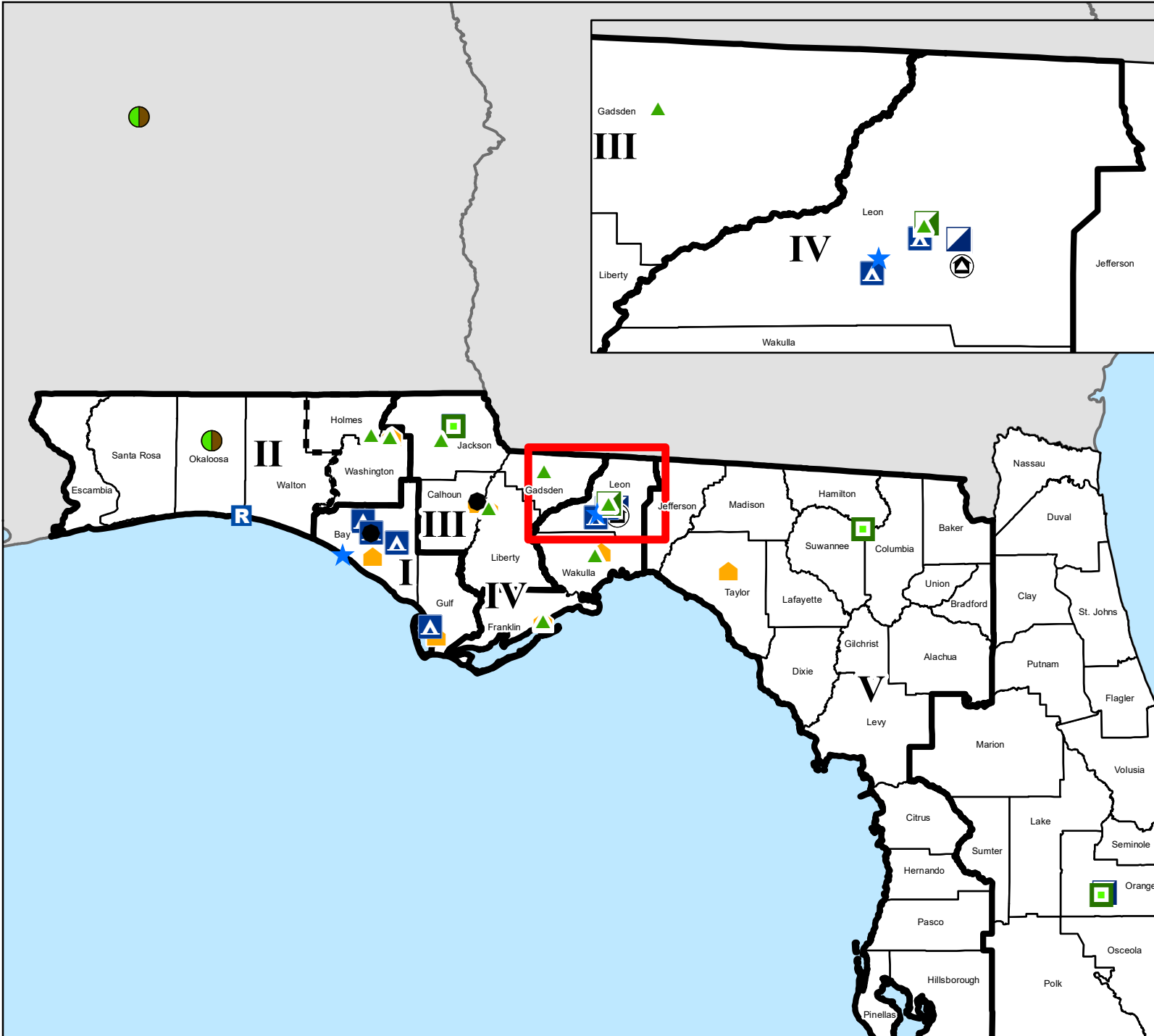


Incident Facilities - October 24, 2018

Hurricane Michael - DR-4399-FL/EM-3405-FL



FEMA



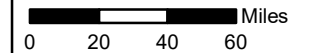
Data Layer / Map Description:
Facilities that are supporting federal response and recovery efforts for Hurricane Michael in Florida.

Facility Type

- Area Field Office
- BRC
- Base Camp
- DRC
- EOC / IOF
- FSA
- IOF Annex
- ISB
- JFO
- Recovery Field Office
- Staging Area
- State LSA
- Temporary Branch Office

Branch

- Branches
- Current Branch II

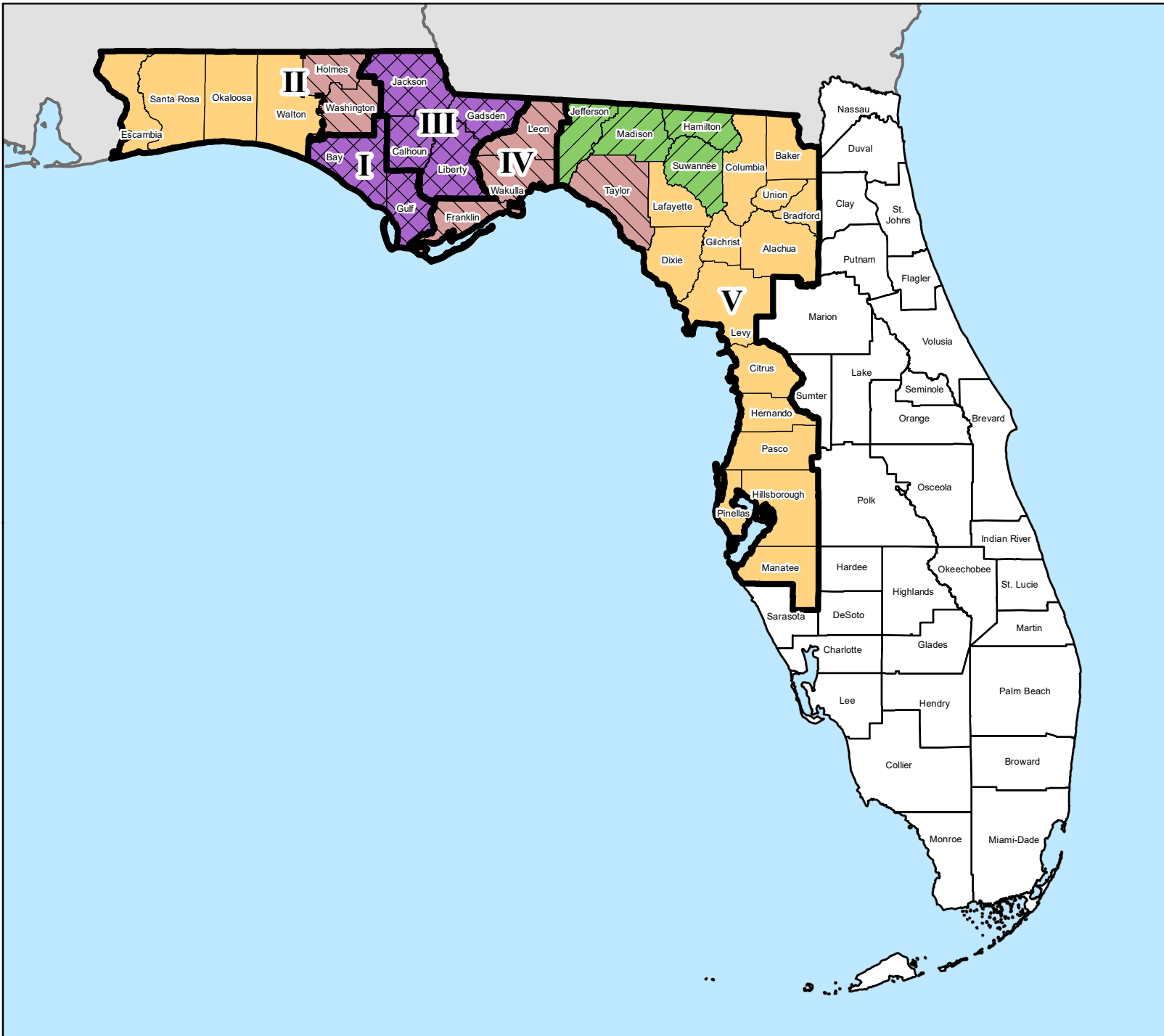


Data Sources:
FEMA, ESRI



Designated Counties as of October 23, 2018

Hurricane Michael - DR-4399-FL (Amendment #6)/EM-3405-FL



Data Layer / Map Description:

The types of assistance that have been designated for selected areas in the State of Florida. All counties in the State of Florida are eligible to apply for assistance under the Hazard Mitigation Grant Program.

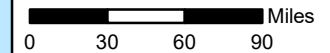
Initial Declarations:
 EM-3405-FL: 10/9/2018
 DR-4399-FL: 10/11/2018

Branch

- Branches
- Current Branch II

Designated Counties

- Individual Assistance; Public Assistance, Categories A-G, including Direct Federal Assistance (DR-4399-FL)
- Individual Assistance; Public Assistance, Categories A and B, including Direct Federal Assistance (DR-4399-FL)
- Public Assistance, Categories A and B, including Direct Federal Assistance (DR-4399-FL/EM-3405-FL)
- Public Assistance, Category B, Limited to Direct Federal Assistance (EM-3405-FL)



Data Sources:
 FEMA, ESRI

FEMA ICS 204 FORM BRANCH ASSIGNMENT LIST	1. FEMA Disaster Number: DR-4399-FL	2. Operational Period: 10/25/2018 0700 to 10/26/2018 0700	5. Prepared By: Jose Lizama Date 10/24/2018
3. Branch: Branch I	4. Division / Group: N/A		6. Reviewed By (OSC-State): Ashley Davis Date 10/24/2018
10. Operations Personnel: Position/Contact Information OSC (State): Ashley Davis 850-544-8373 ashley.davis@em.myflorida.com OSC (FEMA): Dominique Lenox 312-408-5322 dominique.lenox@fema.dhs.gov Branch Director (State): Billy Estep 904-813-3476 bestep@nassauso.com Branch Director (FEMA): Chris Allen 540-532-0476 Christopher.allen@fema.dhs.gov Div/Group Supervisor (State): N/A Div/Group Supervisor (FEMA): N/A			7. Reviewed By (PSC-State): Ryan Lock Date 10/24/2018
			8. Reviewed By (OSC-FEMA): Dominique Lenox Date 10/24/2018
			9. Reviewed By (PSC-FEMA): Jordan Nelms Date 10/24/2018

11. Resources Assigned							
Resource Identifier	Functional Area	Resource Leader Name	Leader Contact Information	Total # of Persons	Work Assignment	Reporting Location/Time	Logistical needs, Special Instruction, additional information
Local Government Liaisons	ESF 03: Public Works	Steve Sweeney (O)	217-280-3118 (O)	2	Integrate and coordinate with FEMA and local emergency management and government officials.	Bay County, FL USNG: 16R FU 22190 39983 10/25/2018 0700 EDT	Bay and Gulf Counties
Critical Public Facility/Infrastructure Assessment	ESF 03: Public Works	Richard Otto (O)	608-738-4947(O)	6	Conduct assessments of critical public facilities.	Critical Public Facilities Bay and Gulf County, FL USNG: 16R FT 64045 98893 10/25/2018 0700 EDT	Bay and Gulf Counties

USGS High Water Mark Crew 1	ESF 05: Info and Planning	Kevin Grimsley (O)	813-267-2321 (O)	12	Recover storm surge recording sensors and document field measurements of maximum storm surge elevation.	Bay County, FL USNG: 16R FU 22190 39983 10/25/2018 0700 EDT	Bay and Gulf Counties
Visual Imaging Team	ESF 15: External Affairs	Steve Zumwalt (F)	540-431-9902 (F)	2	Conduct outreach and visual imaging support in Bay and Gulf Counties.	Panama City/Destin FL USNG: 16R EU 48449 62517 10/25/2018 0700 EDT	Bay and Gulf Counties Personal Protective Equipment (PPE): water, insect repellent, no open toe shoes, sat. phone, hand sanitizer. Safety: Be alert for reptiles that may be in the area.
Media Relations Team 1	ESF 15: External Affairs	David Passey (F)	202-716-4407 (F)	3	Conduct outreach and support messaging to media outlets in Bay and Gulf counties.	Panama City/Destin, FL USNG: 16R EU 48449 62517 10/25/2018 0700 EDT	Bay and Gulf Counties
IA Disaster Housing Inspections/ Inspectors	Individual Assistance - General	Tritina Faulkner (F)	540-771-6118 (F)	633	Conduct home inspections as referred by National Processing Service Center (NPSC). Inspect all damaged homes of all the designated counties.	SEOC / IOF 2555 Shumard Oak Blvd, Tallahassee, FL, 32311-7844 USNG: 16R GU 66064 64872 10/25/2018 0900 EDT	Throughout all branches conducting home inspections. Hours of operation: 0900 to 1700 hours Monday through Saturday. Inspectors and the inspections will continue until all inspections are completed. Personal Protective Equipment (PPE): water, insect repellent, no open toe shoes, sat. phone, hand sanitizer. Safety: Be on alert for reptiles in the area.

Communications (radio frequency/channel information and/or phone contact numbers needed for this assignment):

N/A

FEMA ICS 204 FORM DIVISION ASSIGNMENT LIST	1. FEMA Disaster Number: DR-4399-FL	2. Operational Period: 10/25/2018 0700 to 10/26/2018 0700	5. Prepared By: Jose Lizama	Date 10/24/2018
---	---	---	---------------------------------------	---------------------------

3. Branch: Branch I	4. Division / Group: Bay County	6. Reviewed By (OSC-State): Ashley Davis	Date 10/24/2018
----------------------------	--	--	---------------------------

9. Operations Personnel: Position/Contact Information		7. Reviewed By (PSC-State): Ryan Lock	Date 10/24/2018
OSC (State): Ashley Davis 850-544-8373 ashley.davis@em.myflorida.com			
OSC (FEMA): Dominique Lenox 312-408-5322 dominique.lenox@fema.dhs.gov			
Branch Director (State): Billy Estep 904-813-3476 bestep@nassauso.com			
Branch Director (FEMA): Chris Allen 540-532-0476 Christopher.allen@fema.dhs.gov			
Div/Group Supervisor (State): SSG David Sterling 386-628-8600 N/A			
Div/Group Supervisor (FEMA): Donald Clark 202-716-6424 donald.clark@fema.dhs.gov		8. Reviewed By (OSC-FEMA): Dominique Lenox	Date 10/24/2018
		9. Reviewed By (PSC-FEMA): Jordan Nelms	Date 10/24/2018

10. Resources Assigned							
Resource Identifier	Functional Area	Resource Leader Name	Leader Contact Information	Total # of Persons	Work Assignment	Reporting Location/Time	Logistical needs, Special Instruction, additional information
EOV-14 "Green Hornet" – Panama City	ESF 02: Communications	Gregory Williams (F)	N/A	2	Provide emergency communications support in Bay County.	Bay County EOC 700 Hwy 2300 Panama City, FL 32409 USNG: 16R FU 28727 52637 10/25/2018 0700 EDT	Bay County Contact Logistics to communicate with MERS Team
Infrastructure Assessment/Critical Public Facility	ESF 03: Public Works	Josh Feldmann (O)	716-803-2849 (O)	4	Conduct assessments of critical public facilities.	Critical Public Facilities Bay County, FL USNG: 16R FT 64045 98893 10/25/2018 0700 EDT	Bay County

USACE Debris Technical Monitors	ESF 03: Public Works	Eric Cheng (O)	502-387-0608 (O)	2	Deploy debris technical monitors to observe debris removal operations in support of FEMA.	Gulf County, FL USNG: 16R GU 52761 41405 10/25/2018 0700 EDT	Gulf County
USACE Debris Technical Monitors	ESF 03: Public Works	Eric Cheng (O)	502-387-0608 (O)	6	Deploy debris technical monitors to observe debris removal operations in support of FEMA.	Bay County, FL USNG: 16R GU 52761 41405 10/25/2018 0700 EDT	Bay County
MCV ROE Center	ESF 03: Public Works	Josh Marx (O)	816-604-9905 (O)	4	Provide Mobile Command Vehicle (MCV) as ROE Collection Centers to support Temporary Roofing Operations.	Panama City Square 525 West 23rd St., Panama City, FL USNG: 16R FU 28112 40556 10/25/2018 0700 EDT	Bay County
MCV ROE Center	ESF 03: Public Works	Josh Marx (O)	816-604-9905 (O)	4	Provide Mobile Command Vehicle (MCV) as ROE Collection Centers to support Temporary Roofing Operations.	Walmart Supercenter 2101 S Highway 77, Lynn Haven, FL 32444 USNG: 16R FU 29993 44554 10/25/2018 0700 EDT	Bay County
ECCV ROE Center	ESF 03: Public Works	Josh Marx (O)	816-604-9905 (O)	4	Provide Emergency Command and Control Vehicle (ECCV) as ROE Collection Centers to support Temporary Roofing Operations.	Walmart 15495 Panama City Beach Parkway, Panama City Beach, FL USNG: 16R FU 09324 43654 10/25/2018 0700 EDT	Bay County

Temporary Roofing Contractor Crews	ESF 03: Public Works	Josh Marx (O)	816-604-9905 (O)	30	Install temporary roofing on eligible homes with Contractor crews.	Bay County, FL USNG: 16R FU 22190 39983 10/25/2018 0700 EDT	Bay County
Roofing Assessment Teams	ESF 03: Public Works	Josh Marx (O)	816-604-9905 (O)	10	Perform assessments on collected ROEs.	Bay County, FL USNG: 16R FU 22190 39983 10/25/2018 0700 EDT	Bay County
Mobile Lab and Microbiologist	ESF 03: Public Works	Johnnie Purify (O)	404-562-9298 (O)	1	Provide mobile lab for analysis of water samples provided by the state and locals and microbiologist to assist with water quality testing.	Bay County Waterwater Treatment Plant 3400 Transmitter Road, Panama City, FL USNG: 16R FU 34014 42819 10/25/2018 0700 EDT	Bay County Bay County WWTP – Bay County Utility EOC Trailer
Water/Wastewater Treatment Engineer	ESF 03: Public Works	Johnnie Purify (O)	404-562-9298 (O)	1	Provide technical assistance to the Bay County EOC.	Bay County EOC 700 Highway 2300, Southport, FL USNG: 16R FU 28727 52637 10/25/2018 0700 EDT	Bay County
Shelter Transition Crew 7	ESF 06: Mass Care	Rani Cherkoori(F)	202-826-5707 (F)	3	Register new applicants, conduct thorough case reviews, make NEMIS updates as needed, and provide direction to the survivor on eligibility for FEMA programs.	Surfside Middle School 300 Natilus Street, Panama City, FL. USNG: 16R FU 10618 42422 10/25/2018 0800 EDT	Bay County Safety: water, no open toe shoes, hand sanitizer

Shelter Transition Crew 8	ESF 06: Mass Care	Hweny Pwewei CWL (F)	202-609-2345 (F)	2	Register new applicants, conduct thorough case reviews, make NEMIS updates as needed, and provide direction to the survivor on eligibility for FEMA programs.	Port St. Joe Elementary School 2201 Long Ave, Port St Joe, FL USNG: 16R FT 64989 97054 10/25/2018 0800 EDT	Bay County Safety: water, no open toe shoes, hand sanitizer
Shelter Transition Crew 9	ESF 06: Mass Care	Michelle Bussell (F)	202-826-5849 (F)	3	Register new applicants, conduct thorough case reviews, make NEMIS updates as needed, and provide direction to the survivor on eligibility for FEMA programs.	Deane Bozeman School 13410 Hwy 77, Panama City, FL USNG: 16R FU 25953 63163 10/25/2018 0800 EDT	Bay County Safety: water, no open toe shoes, hand sanitizer
Behavioral Health Team	ESF 08: Health and Medical Services	CPT Erik Schobitz (O)	703-232-8091 (O)	2	Provide behavioral health support to Bay Medical Sacred Heart Hospital.	Bay Medical Sacred Heart Hospital 615 N. Bonita Avenue Panama City, FL 32401-3623 USNG: 16R FU 30284 37252 10/25/2018 0700 EDT	Bay County Behavioral Health Team (BHT)
HHS Pharmacy Strike Team	ESF 08: Health and Medical Services	Kevin Mark (O)	916-202-5262 (O)	3	Provide pharmacy support to FEMA National Ambulance Contract EMS units.	Northeast Florida Beaches Airport 6300 W. Bay Parkway, Panama City, FL 32409 USNG: 16R FU 15975 55229 10/25/2018 0700 EDT	Bay County

Bay Medical TF	ESF 08: Health and Medical Services	Wendy Nesheim (O)	404-590-9475 (O)	53	Provide primary medical care and Emergency Department Decompression.	Bay Medical Sacred Heart Hospital 615 N. Bonita Ave., Panama City, FL 32401 USNG: 16R FU 30284 37252 10/25/2018 0700 EDT	Bay County
EPA Debris Specialist Team	ESF 10: Hazardous Material	Malik Parvez (O)	678-481-4230 (O)	4	Provide support to FDEP to set up of Debris Management Sites and inspection of operations at DDMS Sites.	Bay County EOC 700 HWY 2300, Southport, FL 32409 USNG: 16R FU 28727 52637 10/25/2018 0700 EDT	Bay County
QRT-IRS-3	ESF 13: Public Safety and Security	Jared Robbins (O)	702-219-5375 (O)	23	Provide 24 hour force protection for Task Force Bay Medical; DMAT Georgia-3.	Bay Medical Sacred Heart Hospital 615 N. Bonita Avenue, Panama City, Florida 32401 USNG: 16R FU 30284 37252 10/25/2018 0700 EDT	Bay County
QRT-IRS-3	ESF 13: Public Safety and Security	Jared Robbins (O)	702-219-5375 (O)	2	Provide 24 hour Security for Staging Area/Fuel Point 1.	FEMA Staging Area/Fuel Point 1 12000 Front Beach Road, Panama City Beach, FL USNG: 16R FU 12832 40307 10/25/2018 1900 EDT	Bay County

Intergovernmental Affairs Specialist 1	ESF 15: External Affairs	Q. Winfield (F)	770-401-9694 (F)	1	Conduct outreach and provide information about FEMA programs to local elected officials in Lynn Haven.	Lynn Haven City Hall 825 Ohio Avenue, Lynn Haven, FL 32444 USNG: 16R FU 30020 46769 10/25/2018 0800 EDT	Working in Lynn Haven in Bay County
Intergovernmental Affairs Specialist 2	ESF 15: External Affairs	Ramona Van Cleve (F)	425-949-2040 (F)	1	Conduct outreach and provide information about FEMA programs to local elected officials in Callaway.	Callaway City Hall 6601 East Highway 22, Callaway, FL, 32404 USNG: 16R FU 37062 36588 10/25/2018 0800 EDT	Working in Callaway in Bay County
Intergovernmental Affairs Specialist 3	ESF 15: External Affairs	Jeremy Bott (F)	202-826-3158 (F)	1	Conduct outreach and provide information about FEMA programs to local elected officials in Mexico Beach.	Mexico Beach City Hall 201 Paradise Path, Mexico Beach, FL 32456 USNG: 16R FU 53442 13725 10/25/2018 0800 EDT	Working in Mexico Beach in Bay County
Intergovernmental Affairs Specialist 4	ESF 15: External Affairs	Randy Hecht (F)	770-220-3147 (F)	1	Conduct outreach and provide information about FEMA programs to local elected officials in Parker.	Parker City Hall 1001 W Park St, Panama City, FL 32404 USNG: 16R FU 34345 33937 10/25/2018 0800 EDT	Working in Parker in Bay County

Intergovernmental Affairs Specialist 6	ESF 15: External Affairs	Brian Hyer (F)	202-507-1873 (F)	2	Conduct outreach and provide information about FEMA programs to local elected officials in Panama City.	Panama City Office 80 Harrison Avenue, Panama City, FL32401 USNG: 16R FU 28818 36558 10/25/2018 0800 EDT	Working in Panama City in Bay County
MRIC 1 Taskforce	Individual Assistance - General	Louise Fullmer (F)	303-483-3939 (F)	7	Conduct survivor registration intake, case inquiry and updates, and referrals to whole community partners in Bay County.	Lynn Haven City Hall 826 Ohio Drive, Lynn Haven, FL 32444 USNG: 16R FU 30023 47585 10/25/2018 0800 EDT	Bay County Crews 27a (4 PAX) Personal Protective Equipment (PPE): water, insect repellent, no open toe shoes, sat. phone, hand sanitizer. Safety: Be alert for reptiles that may be in the area.
MRIC 2 Taskforce	Individual Assistance - General	Sam Harvey (F)	202-765-9101 (F)	4	Conduct survivor registration intake, case inquiry and updates, and referrals to whole community partners in Bay County.	Bozeman Shelter 13410 Highway 77, Panama City, FL 32409 USNG: 16R FU 25953 63163 10/25/2018 0800 EDT	Bay County Crews 27b (3 PAX) Personal Protective Equipment (PPE): water, insect repellent, no open toe shoes, sat. phone, hand sanitizer. Safety: Be alert for reptiles that may be in the area.
MRIC 3 Taskforce	Individual Assistance - General	Emma Hoff (F)	202-805-7043 (F)	13	Conduct survivor registration intake, case inquiry and updates, and referrals to whole community partners in Bay County.	Strip Mall Parking Lot 225 S. Tyndall Parkway, Panama City, FL 35450 USNG: 16R FU 30732 36200 10/25/2018 0800 EDT	Bay County Crew 9a (6 PAX), Ocean 8 (5 PAX) Personal Protective Equipment (PPE): water, insect repellent, no open toe shoes, sat. phone, hand sanitizer. Safety: Be alert for reptiles that may be in the area.

MRIC 4 Taskforce	Individual Assistance - General	Linda Durall (F)	202-809-1690 (F)	20	Conduct survivor registration intake, case inquiry and updates, and referrals to whole community partners in Bay County.	Mexico Beach 823 N. 15th Street, Mexico Beach, FL 32456 USNG: 16R FU 54866 13495 10/25/2018 0800 EDT	Bay County Crew 15b (2 PAX), Gulf 4 (8 PAX), Ocean 5 (8 PAX) Personal Protective Equipment (PPE): water, insect repellent, no open toe shoes, sat. phone, hand sanitizer. Safety: Be alert for reptiles that may be in the area.
DSA Crew 15a	Disaster Survivor Assistance	Tanika Brown (F)	202-717-0956 (F)	2	Conduct survivor registration intake, case inquiry and updates, and referrals to whole community partners in Bay County.	Daffin Park Comfort Center 320 Kraft Avenue, Millville, FL 32401 USNG: 16R FU 32603 36676 10/25/2018 0800 EDT	Bay County Personal Protective Equipment (PPE): water, insect repellent, no open toe shoes, sat. phone, hand sanitizer. Safety: Be alert for reptiles that may be in the area.
DSA Crew 16a	Disaster Survivor Assistance	Danny Campbell (F)	337-224-2863 (F)	4	Conduct survivor registration intake, case inquiry and updates, and referrals to whole community partners in the Comfort Station in Bay County.	MLK Recreational Center 705 East 14th Court, Panama City, FL 32401 USNG: 16R FU 30084 38852 10/25/2018 0800 EDT	Bay County Crew 16a (4 PAX) Personal Protective Equipment (PPE): water, insect repellent, no open toe shoes, sat. phone, hand sanitizer. Safety: Be alert for reptiles that may be in the area.
DSA Taskforce Central	Disaster Survivor Assistance	Luis Burgos (F)	202-718-1054 (F)	4	Conduct survivor registration intake, case inquiry and updates, and referrals to whole community partners in Bay County.	VA Outreach at Walmart Parking Lot 513 23 St., Panama City, FL 32401 USNG: 16R FU 32327 40517 10/25/2018 0800 EDT	Bay County Crew 9b (2 PAX), Ocean 8 (2 PAX) Personal Protective Equipment (PPE): water, insect repellent, no open toe shoes, sat. phone, hand sanitizer. Safety: Be alert for reptiles that may be in the area.

DSA Taskforce Southeast 1	Disaster Survivor Assistance	Lisa Palermo (F)	202-251-9329 (F)	13	Conduct survivor registration intake, case inquiry and updates, and referrals to whole community partners in Bay County.	Springfield Church 615 Transmitter Road, Panama City, FL 32401 USNG: 16R FU 34065 37334 10/25/2018 0800 EDT	Bay County Crew 1 (6 PAX), Gulf 8 (7 PAX) Personal Protective Equipment (PPE): water, insect repellent, no open toe shoes, sat. phone, hand sanitizer. Safety: Be alert for reptiles that may be in the area.
DSA Taskforce Southeast 2	Disaster Survivor Assistance	Scott Humphries (F)	609-508-2890 (F)	15	Conduct survivor registration intake, case inquiry and updates, and referrals to whole community partners in the Callaway area of Bay County.	Church of Christ 6321 Cherry St, Panama City, FL 32404 USNG: 16R FU 36736 35763 10/25/2018 0800 EDT	Bay County - Callaway area Canvas around Callaway neighborhood. Crew 17 (8 PAX), Pine 5 (9 PAX) Personal Protective Equipment (PPE): water, insect repellent, no open toe shoes, sat. phone, hand sanitizer. Safety: Be alert for reptiles that may be in the area.
DSA Taskforce Southwest 2	Disaster Survivor Assistance	Autumn Anderson (F)	202-849-8725 (F)	3	Conduct survivor registration intake, case inquiry and updates, and referrals to whole community partners in the Callaway area of Bay County.	Breakfast Point Academy 601 Richard Jackson Boulevard, Panama City Beach, FL USNG: 16R FU 14875 41683 10/25/2018 0800 EDT	Bay County Crew 16b (2 PAX), MCOV 37 Personal Protective Equipment (PPE): water, insect repellent, no open toe shoes, sat. phone, hand sanitizer. Safety: Be alert for reptiles that may be in the area.

DSA Taskforce Southwest 3	Disaster Survivor Assistance	Cora Phillips (F)	609-508-2890 (F)	15	Conduct survivor registration intake, case inquiry and updates, and referrals to whole community partners in the Callaway area of Bay County.	Eagle West Christian Academy 100 N Macarthur Avenue, Panama City, FL 32401 USNG: 16R FU 30087 35839 10/25/2018 0800 EDT	Bay County Canvas around Cove neighborhood. Crew 15c (4 PAX), Pine 6 (11 PAX) Personal Protective Equipment (PPE): water, insect repellent, no open toe shoes, sat. phone, hand sanitizer. Safety: Be alert for reptiles that may be in the area.
DSA Taskforce Southwest 4	Disaster Survivor Assistance	Bledine Thelusma-Choudelor (F)	202-412-3380 (F)	2	Conduct survivor registration intake, case inquiry and updates, and referrals to whole community partners at the Surfside Middle School Shelter in Bay County.	Surfside Middle School 300 Nautilus Street, Panama City Beach, FL USNG: 16R FU 10618 42422 10/25/2018 0800 EDT	Bay County Pine 6 (1 PAX), MCOV 37 Personal Protective Equipment (PPE): water, insect repellent, no open toe shoes, sat. phone, hand sanitizer. Safety: Be alert for reptiles that may be in the area.
Floodplain Management Specialist 1	Hazard Mitigation	Darrell Walker (F)	225-916-0086 (F)	2	Meet with Floodplain Manager and local officials, discuss floodplain procedures, substantial damage determinations and offer FEMA assistance to any concerns / needs of the community.	City of Calloway Floodplain Administrators Office 6601 East Highway 22, Calloway, FL.32404 USNG: 16R FU 37062 36588 10/25/2018 0700 EDT	Bay County Cities of Calloway, Lynn Haven and Mexico beach. Team will check in with respective division contacts prior to entry.

<p>Mitigation Assessment Team Crew #1</p>	<p>Hazard Mitigation</p>	<p>John (Bud) Plisich (F)</p>	<p>404-354-5283 (F)</p>	<p>4</p>	<p>Pre-MAT Non-Residential Team Conduct initial assessment of perishable data and determine if further MAT effort is warranted.</p>	<p>Bay County, FL USNG: 16R FU 22190 39983 10/25/2018 0700 EDT</p>	<p>Bay County Crew # 1 may also travel to: Calhoun County Today is the final day of field work for the Pre-MAT Team. Each team will check in with respective division contacts prior to entry. Personal Protective Equipment (PPE): water, insect repellent, no open toe shoes, hand sanitizer. Safety: Be on alert for reptiles in the area</p>
<p>Mitigation Assessment Team Crew #2</p>	<p>Hazard Mitigation</p>	<p>Christina Lindemer (F)</p>	<p>470-554-4325 (F)</p>	<p>4</p>	<p>Pre-MAT Coastal Team Conduct initial assessment of perishable data and determine if further MAT effort is warranted.</p>	<p>Mexico Beach, FL USNG: 16R FU 22190 39983 10/25/2018 0700 EDT</p>	<p>Bay County and Gulf County. Cities of Mexico Beach & Port St. Joe. Each team will check in with respective division contacts prior to entry Today is the final day of field work for the Pre-MAT Team. Personal Protective Equipment (PPE): water, insect repellent, no open toe shoes, hand sanitizer. Safety: Be on alert for reptiles in the area</p>

Mitigation Assessment Team Crew #3	Hazard Mitigation	Sean McGowan (F)	303-475-1447 (F)	4	Pre-MAT Residential Wind Team Conduct initial assessment of perishable data and determine if further MAT effort is warranted.	Bay County, FL USNG: 16R FU 22190 39983 10/25/2018 0700 EDT	Bay County Cities of: Lynn Haven, Calloway, and Panama City. Each team will check in with respective division contacts prior to entry Today is the final day of field work for the Pre-Mat Team. Personal Protective Equipment (PPE): water, insect repellent, no open toe shoes, hand sanitizer. Safety: Be on alert for reptiles in the area
Mobile Business Recovery Center 1a	Small Business Administration	Mike Myhre (O)	850-898-3479 (O)	2	Provide Information to disaster survivors regarding the Small Business Administration (SBA) Disaster loan programs.	Bay County City Job Center Bay County City Job Center, 625 Highway 231, Panama City, FL 32405 USNG: 16R GU 54030 42031 10/25/2018 0700 EDT	Bay County Operating hours: Monday - Saturday: 0900 EDT - 1800 EDT Closed On Sundays

Communications (radio frequency/channel information and/or phone contact numbers needed for this assignment):
N/A

FEMA ICS 204 FORM DIVISION ASSIGNMENT LIST	1. FEMA Disaster Number: DR-4399-FL	2. Operational Period: 10/25/2018 0700 to 10/26/2018 0700	5. Prepared By: Jose Lizama	Date 10/24/2018
---	---	---	---------------------------------------	---------------------------

3. Branch: Branch I	4. Division / Group: Gulf County	6. Reviewed By (OSC-State): Ashley Davis	Date 10/24/2018
----------------------------	---	--	---------------------------

9. Operations Personnel: Position/Contact Information		7. Reviewed By (PSC-State): Ryan Lock	Date 10/24/2018
OSC (State): Ashley Davis 850-544-8373 ashley.davis@em.myflorida.com			
OSC (FEMA): Dominique Lenox 312-408-5322 dominique.lenox@fema.dhs.gov			
Branch Director (State): Billy Estep 904-813-3476 bestep@nassauso.com		8. Reviewed By (OSC-FEMA): Dominique Lenox	Date 10/24/2018
Branch Director (FEMA): Chris Allen 540-532-0476 Christopher.allen@fema.dhs.gov			
Div/Group Supervisor (State): CPT Trevor Chase 904-524-0510 N/A		9. Reviewed By (PSC-FEMA): Jordan Nelms	Date 10/24/2018
Div/Group Supervisor (FEMA): John Ford 202-709-1361 john.ford@fema.dhs.gov			

10. Resources Assigned							
Resource Identifier	Functional Area	Resource Leader Name	Leader Contact Information	Total # of Persons	Work Assignment	Reporting Location/Time	Logistical needs, Special Instruction, additional information
ROE Collection Center - Gulf	ESF 03: Public Works	Josh Marx (O)	816-604-9905 (O)	4	ROE Collection Center to support Temporary Roofing Operations.	First Baptist Church 102 3rd Street, Port St. Joe, FL USNG: 16R FT 63814 99354 10/25/2018 0700 EDT	Gulf County
Shelter Transition Crew 5	ESF 06: Mass Care	Kathleen Moy (F)	202-374-4645 (F)	2	Register new applicants, conduct thorough case reviews, make NEMIS updates as needed, and provide direction to the survivor on eligibility for FEMA programs.	Honeyville Community Center 240 Honneyville Park Dr, Wewahitchka, FL USNG: 16R FU 73398 32641 10/25/2018 0800 EDT	Gulf County Safety: water, no open toe shoes, hand sanitizer

MRIC 5 Taskforce	Individual Assistance - General	Henry Owusu (F)	202-394-9675 (F)	16	Conduct survivor registration intake, case inquiry and updates, and referrals to whole community partners in Gulf County.	Constitution Convention Museum State Park 2201 Allen Memorial Way, Port St. Joe, FL 32456 USNG: 16R FT 64874 97177 10/25/2018 0800 EDT	Gulf County Crew 4 (7 PAX), Gulf 9 (8 PAX) Personal Protective Equipment (PPE): water, insect repellent, no open toe shoes, sat. phone, hand sanitizer. Safety: Be alert for reptiles that may be in the area.
MRIC 6 Taskforce	Individual Assistance - General	Tanya Moore (F)	202-705-2518 (F)	9	Conduct survivor registration intake, case inquiry and updates, and referrals to whole community partners in Gulf County.	Honeyville Community Center Shelter 240 Honeyville Park Dr., Wewahitchka, FL 32465 USNG: 16R FU 72144 26696 10/25/2018 0800 EDT	Gulf County Crew 6 (8 PAX) Personal Protective Equipment (PPE): water, insect repellent, no open toe shoes, sat. phone, hand sanitizer. Safety: Be alert for reptiles that may be in the area.
Business Recovery Center 5	Small Business Administration	Eric Shaw (O)	404-895-8439 (O)	2	Provide information to disaster survivors regarding the Small Business Administration (SBA) Disaster loan programs.	Gulf Franklin Center of GCSC 3800 Garrison Avenue, Port St. Joe, Florida 32456 USNG: 16R GU 54030 42031 10/25/2018 0700 EDT	Gulf County Operating hours: Monday - Saturday: 0900 EDT - 1800 EDT Closed On Sundays
Intergovernmental Affairs Specialist 7	ESF 15: External Affairs	Brenda Gustafson (F)	202-394-8335 (F)	3	Conduct outreach and provide information about FEMA programs to local elected officials in Port St. Joe.	Gulf County Courthouse 1000 Cecil G. Costin Sr. Blvd, Port St Joe, FL 32456 USNG: 16R FT 65183 99573 10/25/2018 0800 EDT	Working in Port St. Joe in Gulf County

Communications (radio frequency/channel information and/or phone contact numbers needed for this assignment):

N/A

FEMA ICS 204 FORM BRANCH ASSIGNMENT LIST	1. FEMA Disaster Number: DR-4399-FL	2. Operational Period: 10/25/2018 0700 to 10/26/2018 0700	5. Prepared By: Jose Lizama Date 10/24/2018
---	---	---	--

3. Branch: Branch II	4. Division / Group: N/A	6. Reviewed By (OSC-State): Ashley Davis Date 10/24/2018
-----------------------------	---------------------------------	---

10. Operations Personnel: Position/Contact Information OSC (State): Ashley Davis 850-544-8373 ashley.davis@em.myflorida.com OSC (FEMA): Dominique Lenox 312-408-5322 dominique.lenox@fema.dhs.gov Branch Director (State): Brad Baker 850-393-9848 bradb@santarosa.fl.gov Branch Director (FEMA): Pam Zawada 617-794-9845 pamela.zawada@fema.dhs.gov Div/Group Supervisor (State): N/A Div/Group Supervisor (FEMA): N/A	7. Reviewed By (PSC-State): Ryan Lock Date 10/24/2018 8. Reviewed By (OSC-FEMA): Dominique Lenox Date 10/24/2018 9. Reviewed By (PSC-FEMA): Jordan Nelms Date 10/24/2018
--	---

11. Resources Assigned

Resource Identifier	Functional Area	Resource Leader Name	Leader Contact Information	Total # of Persons	Work Assignment	Reporting Location/Time	Logistical needs, Special Instruction, additional information
Media Relations Specialist 1	ESF 15: External Affairs	Nate Custer (F)	347-580-3528 (F)	1	Conduct outreach and support messaging to media outlets in Washington and Holmes counties.	Washington County, FL USNG: 16R FV 39014 06432 10/25/2018 0700 EDT	Washington and Holmes counties

Communications (radio frequency/channel information and/or phone contact numbers needed for this assignment):
N/A

FEMA ICS 204 FORM DIVISION ASSIGNMENT LIST	1. FEMA Disaster Number: DR-4399-FL	2. Operational Period: 10/25/2018 0700 to 10/26/2018 0700	5. Prepared By: Jose Lizama	Date 10/24/2018
---	---	---	---------------------------------------	---------------------------

3. Branch: Branch II	4. Division / Group: Holmes County	6. Reviewed By (OSC-State): Ashley Davis	Date 10/24/2018
-----------------------------	---	--	---------------------------

9. Operations Personnel: Position/Contact Information		7. Reviewed By (PSC-State): Ryan Lock	Date 10/24/2018
OSC (State): Ashley Davis 850-544-8373 ashley.davis@em.myflorida.com OSC (FEMA): Dominique Lenox 312-408-5322 dominique.lenox@fema.dhs.gov Branch Director (State): Brad Baker 850-393-9848 bradb@santarosa.fl.gov Branch Director (FEMA): Pam Zawada 617-794-9845 pamela.zawada@fema.dhs.gov Div/Group Supervisor (State): SFC Paul Abel 321-684-2188 N/A Div/Group Supervisor (FEMA): Rita Bazazzadeh 202-316-7842 rita.bazazzadeh@fema.dhs.gov		8. Reviewed By (OSC-FEMA): Dominique Lenox	Date 10/24/2018
		9. Reviewed By (PSC-FEMA): Jordan Nelms	Date 10/24/2018

10. Resources Assigned							
Resource Identifier	Functional Area	Resource Leader Name	Leader Contact Information	Total # of Persons	Work Assignment	Reporting Location/Time	Logistical needs, Special Instruction, additional information
USACE Debris Technical Monitor	ESF 03: Public Works	Eric Cheng (O)	502-387-0608 (O)	1	Deploy debris technical monitors to observe debris removal operations in support of FEMA.	Holmes County, FL USNG: 16R FU 22190 39983 10/25/2018 0700 EDT	Holmes County
QRT-HHS-7	ESF 13: Public Safety and Security	Scott Brown (O)	202-280-8490 (O)	6	Provide 24 hour security for DRC-5.	DRC-5 (Holmes County Ag Center) 1173 East Highway 90, Bonifay FL 32425 USNG: 16R FV 28032 06790 10/25/2018 0700 EDT	Holmes County

Intergovernmental Affairs Specialist 25	ESF 15: External Affairs	Jeanne Paradise (F)	225-910-2628(F)	1	Provide a brief overview of FEMA activity in Holmes County to Chamber of Commerce members.	Holmes County Chamber of Commerce 106 E. Byrd Bonifay, FL 34245 USNG: 16R FV 26492 06453 10/25/2018 1300 EDT	Working in Bonifay in Holmes County
IA VAL Leadership Meeting Conference	Individual Assistance - VAL	Joy Grahn (F)	202-706-0079 (F)	4	Meet with Division Supervisor, County Emergency Management Coordinator and agencies working in the area.	AG Center 1173 E. Hwy 90 Bonifay, FL USNG: 16R FV 28032 06790 10/25/2018 0900 EDT	Holmes County 1173 E. Hwy 90 Bonifay, FL.
DSA Crew 19a	Disaster Survivor Assistance	John Grace (F)	202-615-3762 (F)	4	Register survivors and conduct assess, inform, report (AIR) mission to identify critical emerging issues in Holmes County.	First Baptist Church 311 N. Waukesha St, Bonifay, FL 32425 USNG: 16R FV 26329 07534 10/25/2018 0800 EDT	Holmes County FBOs Personal Protective Equipment (PPE): water, insect repellent, no open toe shoes, sat. phone, hand sanitizer. Safety: Be alert for reptiles that may be in the area.
DSA Crew 19b	Disaster Survivor Assistance	Martha Moore (F)	202-431-9250 (F)	2	Register survivors and conduct assess, inform, report (AIR) mission to identify critical emerging issues at POD in Holmes County.	Ponce de Leon Town Hall 1580 US 90 Ponce De Leon FL 32455 USNG: 16R FV 27821 06816 10/25/2018 0800 EDT	Holmes County Personal Protective Equipment (PPE): water, insect repellent, no open toe shoes, sat. phone, hand sanitizer. Safety: Be alert for reptiles that may be in the area.

Disaster Recovery Center #5	Individual Assistance - DRCs	Filiberto Miranda-Boyer (F)	202-717-1476 (F)	8	Operate a Disaster Recovery Center (DRC) in the County of Leon, to provide access and direct support to survivors through FEMA Individual Assistance (IA), registration intake, referral, case management, Small Business Administration (SBA) loan support and Hazard Mitigation.	DRC #5 - AG Center 1173 E Hwy 90, Bonifay, FL, 32425 USNG: 16R FV 28032 06790 10/25/2018 0800 EDT	Holmes County Hours of Operations: Monday - Sunday: 0800 - 1900 EDT
-----------------------------	------------------------------	-----------------------------	------------------	---	--	---	---

Communications (radio frequency/channel information and/or phone contact numbers needed for this assignment):
N/A

FEMA ICS 204 FORM DIVISION ASSIGNMENT LIST		1. FEMA Disaster Number: DR-4399-FL		2. Operational Period: 10/25/2018 0700 to 10/26/2018 0700		5. Prepared By: Jose Lizama		Date 10/24/2018
3. Branch: Branch II			4. Division / Group: Okaloosa County			6. Reviewed By (OSC-State): Ashley Davis		Date 10/24/2018
9. Operations Personnel: Position/Contact Information						7. Reviewed By (PSC-State): Ryan Lock		Date 10/24/2018
OSC (State): Ashley Davis 850-544-8373 ashley.davis@em.myflorida.com OSC (FEMA): Dominique Lenox 312-408-5322 dominique.lenox@fema.dhs.gov Branch Director (State): Brad Baker 850-393-9848 bradb@santarosa.fl.gov Branch Director (FEMA): Pam Zawada 617-794-9845 pamela.zawada@fema.dhs.gov Div/Group Supervisor (State): N/A Div/Group Supervisor (FEMA): N/A						8. Reviewed By (OSC-FEMA): Dominique Lenox		Date 10/24/2018
						9. Reviewed By (PSC-FEMA): Jordan Nelms		Date 10/24/2018
10. Resources Assigned								
Resource Identifier	Functional Area	Resource Leader Name	Leader Contact Information	Total # of Persons	Work Assignment	Reporting Location/Time	Logistical needs, Special Instruction, additional information	
EOV-61 – Egin AFB	ESF 02: Communications	David Kimmel (F)	N/A	7	Provide emergency communications support in Okaloosa County.	Egin AFB, FL USNG: 16R EU 37696 82216 10/25/2018 0700 EDT	Okaloosa County Contact Logistics to communicate with MERS Team	
USACE Recovery Field Office	ESF 03: Public Works	LTC Gussenhoven (O)	646-549-0266 (O)	60	Operate Recovery Field Office for USACE field operations in designated counties.	Recovery Field Office 4635 Gulfstar Drive, Destin, FL USNG: 16R EU 56327 61868 10/25/2018 0700 EDT	Okaloosa County	

FEMA ICS 204 FORM DIVISION ASSIGNMENT LIST	1. FEMA Disaster Number: DR-4399-FL	2. Operational Period: 10/25/2018 0700 to 10/26/2018 0700	5. Prepared By: Jose Lizama	Date 10/24/2018
---	---	---	---------------------------------------	---------------------------

3. Branch: Branch II	4. Division / Group: Washington County	6. Reviewed By (OSC-State): Ashley Davis	Date 10/24/2018
-----------------------------	---	--	---------------------------

9. Operations Personnel: Position/Contact Information		7. Reviewed By (PSC-State): Ryan Lock	Date 10/24/2018
OSC (State): Ashley Davis 850-544-8373 ashley.davis@em.myflorida.com			
OSC (FEMA): Dominique Lenox 312-408-5322 dominique.lenox@fema.dhs.gov			
Branch Director (State): Brad Baker 850-393-9848 bradb@santarosa.fl.gov		8. Reviewed By (OSC-FEMA): Dominique Lenox	Date 10/24/2018
Branch Director (FEMA): Pam Zawada 617-794-9845 pamela.zawada@fema.dhs.gov			
Div/Group Supervisor (State): SSG Andre Green 281-840-6754 N/A			
Div/Group Supervisor (FEMA): Larry Pigg 202-531-2376 larry.pigg@fema.dhs.gov		9. Reviewed By (PSC-FEMA): Jordan Nelms	Date 10/24/2018

10. Resources Assigned							
Resource Identifier	Functional Area	Resource Leader Name	Leader Contact Information	Total # of Persons	Work Assignment	Reporting Location/Time	Logistical needs, Special Instruction, additional information
IRV – Chipley	ESF 02: Communications	David Swan (F)	N/A	1	Provide emergency communications support in Washington County.	Chipley, FL USNG: 16R FV 39014 06432 10/25/2018 0700 EDT	Washington County Contact Logistics to communicate with MERS Team
IRV 2 – Chipley	ESF 02: Communications	Thomas Brown (F)	N/A	1	Provide emergency communications support in Washington County.	Chipley, FL USNG: 16R FV 39014 06432 10/25/2018 0700 EDT	Washington County Contact Logistics to communicate with MERS Team

Roofing Assessment Teams	ESF 03: Public Works	Josh Marx (O)	816-604-9905 (O)	10	Perform assessments on collected ROEs.	Washington County, FL USNG: 16R FU 22190 39983 10/25/2018 0700 EDT	Washington County
Shelter Transition Crew 6	ESF 06: Mass Care	William Smith (F)	202-655-8627 (F)	2	Register new applicants, conduct thorough case reviews, make NEMIS updates as needed, and provide direction to the survivor on eligibility for FEMA programs.	Chipley First Baptist Church 1300 South Blvd., Chipley, FL 32428 USNG: 16R FV 39649 05226 10/25/2018 0800 EDT	Washington County Safety: water, no open toe shoes, hand sanitizer
Intergovernmental Affairs Specialist 8	ESF 15: External Affairs	Kimberly Helm (F)	202-212-1351 (F)	1	Conduct outreach and provide information about FEMA programs to local elected officials in Chipley.	Chipley City Hall 1442 W. Jackson, Chipley, FL 32428 USNG: 16R FU 37132 89557 10/25/2018 0800 EDT	Working in Chipley in Washington County
DSA Crew 18a	Disaster Survivor Assistance	Brian Montgomery (F)	609-508-2522 (F)	3	Register survivors and conduct assess, inform, report (AIR) mission to identify critical emerging issues in Washington County.	Vernon Oaks Fire Station 3560 Roche Avenue, Vernon, FI 32462 USNG: 16R FU 24568 89493 10/25/2018 0900 EDT	Washington County Supporting POD at the Vernon Oaks Fire Station Personal Protective Equipment (PPE): water, insect repellent, no open toe shoes, sat. phone, hand sanitizer. Safety: Be alert for reptiles that may be in the area.

DSA Crew 18b	Disaster Survivor Assistance	Catalina Echevarria (F)	202-664-0738 (F)	2	Register survivors and conduct assess, inform, report (AIR) mission to identify critical emerging issues in Washington County.	Vernon Oaks Fire Station 3560 Roche Avenue, Vernon, FL 32462 USNG: 16R FU 24568 89493 10/25/2018 0900 EDT	Washington County Canvassing Orange Hill area Personal Protective Equipment (PPE): water, insect repellent, no open toe shoes, sat. phone, hand sanitizer. Safety: Be alert for reptiles that may be in the area.
DSA Crew 18c	Disaster Survivor Assistance	Robert Alexander (F)	718-474-4530 (F)	2	Register survivors and conduct assess, inform, report (AIR) mission to identify critical emerging issues in Washington County.	Vernon Oaks Fire Station 3560 Roche Avenue, Vernon, FL 32462 USNG: 16R FU 24568 89493 10/25/2018 0900 EDT	Washington County Canvassing Chipley area Personal Protective Equipment (PPE): water, insect repellent, no open toe shoes, sat. phone, hand sanitizer. Safety: Be alert for reptiles that may be in the area.
Disaster Recovery Center #6	Individual Assistance - DRCs	Michelle Andrews (F)	347-886-5308 (F)	8	Operate a Disaster Recovery Center (DRC) in the County of Leon, to provide access and direct support to survivors through FEMA Individual Assistance (IA), registration intake, referral, case management, Small Business Administration (SBA) loan support and Hazard Mitigation.	DRC #6 - Washington County AG Center 1424 W. Jackson Avenue , Chipley , FL, 32428 USNG: 16R FV 38629 05834 10/25/2018 0800 EDT	Washington County Hours of Operations: Monday - Sunday: 0800 - 1900 EDT
Business Recovery Center 6	Small Business Administration	Eric Shaw (O)	404-895-8439 (O)	2	Provide information to disaster survivors regarding the Small Business Administration (SBA) Disaster loan programs.	Washington County Chamber of Commerce 672 5th Street, Chipley, Florida 32428 USNG: 16R GU 54030 42031 10/25/2018 0700 EDT	Washington County Operating hours: Monday - Saturday: 0900 EDT - 1800 EDT Closed On Sundays

Communications (radio frequency/channel information and/or phone contact numbers needed for this assignment):

N/A

FEMA ICS 204 FORM BRANCH ASSIGNMENT LIST	1. FEMA Disaster Number: DR-4399-FL	2. Operational Period: 10/25/2018 0700 to 10/26/2018 0700	5. Prepared By: Jose Lizama Date 10/24/2018
3. Branch: Branch III		4. Division / Group: N/A	
10. Operations Personnel: Position/Contact Information OSC (State): Ashley Davis 850-544-8373 ashley.davis@em.myflorida.com OSC (FEMA): Dominique Lenox 312-408-5322 dominique.lenox@fema.dhs.gov Branch Director (State): Nigel Baker 561-308-4102 nbaker@pbcgov.org Branch Director (FEMA): Timothy Manner 202-531-9544 timothy.manner@fema.dhs.gov Div/Group Supervisor (State): N/A Div/Group Supervisor (FEMA): N/A			7. Reviewed By (OSC-State): Ryan Lock Date 10/24/2018
			8. Reviewed By (OSC-FEMA): Dominique Lenox Date 10/24/2018
			9. Reviewed By (PSC-FEMA): Jordan Nelms Date 10/24/2018

11. Resources Assigned							
Resource Identifier	Functional Area	Resource Leader Name	Leader Contact Information	Total # of Persons	Work Assignment	Reporting Location/Time	Logistical needs, Special Instruction, additional information
USACE Emergency Route Clearance Team	ESF 03: Public Works	Eric Cheng (O)	502-387-0608 (O)	165	Deploy debris route clearance teams in coordination with the utility to support state ESF 12 and power restoration crews.	Jackson and Calhoun Counties Jackson County, FLorida USNG: 16R GU 64780 73303 10/25/2018 0700 EDT	Jackson County 23 "push crews" Calhoun County 10 "push crews"
Media Relations Specialist 1	ESF 15: External Affairs	Nate Custer (F)	347-580-3528 (F)	1	Conduct outreach and support messaging to media outlets in Gadsden and Jackson counties.	Gadsden County, FL USNG: 16R GU 31236 86433 10/25/2018 0700 EDT	Gadsden and Jackson Counties

Media Relations Team 2	ESF 15: External Affairs	Victor Inge (F)	202-805-6475 (F)	2	Conduct outreach and support messaging to media outlets in Calhoun and Liberty counties.	Calhoun County, FL USNG: 16R FU 87728 69810 10/25/2018 0700 EDT	Calhoun and Liberty Counties
---------------------------	--------------------------------	--------------------	------------------	---	--	---	------------------------------

Communications (radio frequency/channel information and/or phone contact numbers needed for this assignment):
N/A

FEMA ICS 204 FORM DIVISION ASSIGNMENT LIST	1. FEMA Disaster Number: DR-4399-FL	2. Operational Period: 10/25/2018 0700 to 10/26/2018 0700	5. Prepared By: Jose Lizama	Date 10/24/2018
---	---	---	---------------------------------------	---------------------------

3. Branch: Branch III	4. Division / Group: Calhoun County	6. Reviewed By (OSC-State): Ashley Davis	Date 10/24/2018
------------------------------	--	--	---------------------------

9. Operations Personnel: Position/Contact Information		7. Reviewed By (PSC-State): Ryan Lock	Date 10/24/2018
OSC (State): Ashley Davis 850-544-8373 ashley.davis@em.myflorida.com OSC (FEMA): Dominique Lenox 312-408-5322 dominique.lenox@fema.dhs.gov Branch Director (State): Nigel Baker 561-308-4102 nbaker@pbcgov.org Branch Director (FEMA): Timothy Manner 202-531-9544 timothy.manner@fema.dhs.gov Div/Group Supervisor (State): SSG Forrest Benham 941-405-2986 N/A Div/Group Supervisor (FEMA): Michael Riley 202-702-7153 / 8816 3169 2860 (Sat.) michael.riley@fema.dhs.gov		8. Reviewed By (OSC-FEMA): Dominique Lenox	Date 10/24/2018
		9. Reviewed By (PSC-FEMA): Jordan Nelms	Date 10/24/2018

10. Resources Assigned

Resource Identifier	Functional Area	Resource Leader Name	Leader Contact Information	Total # of Persons	Work Assignment	Reporting Location/Time	Logistical needs, Special Instruction, additional information
Shelter Transition Crew 2	ESF 06: Mass Care	Bianca Suarez (F)	202-615-7756 (F)	2	Register new applicants, conduct thorough case reviews, make NEMIS updates as needed, and provide direction to the survivor on eligibility for FEMA programs	Mossy Pond Community Center 22216 Lake McKinzie Blvd, Altha, FL. USNG: 16R FU 62449 77872 10/25/2018 088 EDT	Calhoun County Safety: Water, No open shoes and hand sanitizer
MEOV-13 - Blountstown	ESF 02: Communications	Thomas Brown (F)	N/A	3	Provide emergency communications support in Calhoun County.	Blountstown, FL USNG: 16R FU 87728 69810 10/25/2018 0700 EDT	Calhoun County Contact Logistics to communicate with MERS Team

ROE Collection Center - Calhoun	ESF 03: Public Works	Josh Marx (O)	816-604-9905 (O)	4	Operate ROE Collection Center to support Temporary Roofing Operations.	ROE Collection Center 17932 FL-71, Blountstown FL USNG: 16R FU 87387 70496 10/25/2018 0700 EDT	Calhoun County
Shelter Transition Crew 1	ESF 06: Mass Care	Narah Van Cleve (F)	202-340-8061 (F)	2	Register new applicants, conduct thorough case reviews, make NEMIS updates as needed, and provide direction to the survivor on eligibility for FEMA programs.	Blountstown High School 18597 NE State Route 69, Blountstown, FL 32424 USNG: 16R FU 87705 72261 10/25/2018 0800 EDT	Calhoun County Safety: water, no open toe shoes, hand sanitizer
DSA Crew 5	Disaster Survivor Assistance	Daryl McDowell (F)	305-409-7888 (F)	15	Registering survivors and conducting assess, inform, report (AIR) mission in the Altha, Nettle Ridge, Victoria Hills, and Ocheessee areas.	Burger King 20407 West Central Avenue, Blountstown, FL 32424 USNG: 16R FU 87277 69529 10/25/2018 0800 EDT	Calhoun County Personal Protective Equipment (PPE): water, insect repellent, no open toe shoes, sat. phone, hand sanitizer. Safety: Be alert for reptiles that may be in the area.
DSA Taskforce 7	Disaster Survivor Assistance	Gerald Grigsby (F)	609-508-2386 (F)	32	Registering survivors and conducting assess, inform, report (AIR) missions in the county.	Altha Town Hall 25586 Main Street, Altha, FL 32421 USNG: 16R FU 79598 83455 10/25/2018 0800 EDT	Calhoun County Canvassing Summit 2(pax9), Ocean 2 (pax6), Crew 2 (pax8), Crew 7(pax9) Personal Protective Equipment (PPE): water, insect repellent, no open toe shoes, sat. phone, hand sanitizer. Safety: Be alert for reptiles that may be in the area.

DSA Crew 13	Disaster Survivor Assistance	Jerry Sigris (F)	609-508-2636 (F)	8	Registering survivors and conducting assess, inform, report (AIR) missions at the shelter at Mossy Pond Library and community outreach near Altha Town Hall, Kinard VFD and Sam Atkins Park.	Burger King 20407 West Central Avenue, Blountstown, FL 32424 USNG: 16R FU 87277 69529 10/25/2018 0800 EDT	Calhoun County Supporting MCOV-103 Personal Protective Equipment (PPE): water, insect repellent, no open toe shoes, sat. phone, hand sanitizer. Safety: Be alert for reptiles that may be in the area.
MRIC 7 Taskforce	Individual Assistance - General	Danette Mckinsey (F)	609-508-2892 (F)	3	Conduct survivor registration intake, case inquiry and updates, and referrals to whole community partners in Calhoun County.	Altha City Hall 25586 N. Main St., Allthea, FL 32421 USNG: 16R FU 79598 83455 10/25/2018 0800 EDT	Calhoun County MRIC 7 Support Altha City Hall Personal Protective Equipment (PPE): water, insect repellent, no open toe shoes, sat. phone, hand sanitizer. Safety: Be alert for reptiles that may be in the area.
Mobile Business Recovery Center 2a	Small Business Administration	Eric Shaw (O)	404-895-8439 (O)	2	Provide information to disaster survivors regarding the Small Business Administration (SBA) Disaster loan programs.	Blountstown Center 16908 NE Pear Street, Blountstown, Florida 32424 USNG: 16R FU 87730 69709 10/25/2018 0700 EDT	Calhoun County Operating hours: Monday - Saturday: 0900 EDT - 1800 EDT Closed On Sundays

Communications (radio frequency/channel information and/or phone contact numbers needed for this assignment):

N/A

FEMA ICS 204 FORM DIVISION ASSIGNMENT LIST	1. FEMA Disaster Number: DR-4399-FL	2. Operational Period: 10/25/2018 0700 to 10/26/2018 0700	5. Prepared By: Jose Lizama	Date 10/24/2018
---	---	---	---------------------------------------	---------------------------

3. Branch: Branch III	4. Division / Group: Gadsden County	6. Reviewed By (OSC-State): Ashley Davis	Date 10/24/2018
------------------------------	--	--	---------------------------

9. Operations Personnel: Position/Contact Information		7. Reviewed By (PSC-State): Ryan Lock	Date 10/24/2018
OSC (State): Ashley Davis 850-544-8373 ashley.davis@em.myflorida.com OSC (FEMA): Dominique Lenox 312-408-5322 dominique.lenox@fema.dhs.gov Branch Director (State): Nigel Baker 561-308-4102 nbaker@pbcgov.org Branch Director (FEMA): Timothy Manner 202-531-9544 timothy.manner@fema.dhs.gov Div/Group Supervisor (State): SSG Glenn Moralestorres 813-735-0042 N/A Div/Group Supervisor (FEMA): Paul Williams 229-977-4172 paul.williams6@fema.dhs.gov		8. Reviewed By (OSC-FEMA): Dominique Lenox	Date 10/24/2018
		9. Reviewed By (PSC-FEMA): Jordan Nelms	Date 10/24/2018

10. Resources Assigned							
Resource Identifier	Functional Area	Resource Leader Name	Leader Contact Information	Total # of Persons	Work Assignment	Reporting Location/Time	Logistical needs, Special Instruction, additional information
ROE Collection Center - Gadsden	ESF 03: Public Works	Josh Marx (O)	816-604-9905 (O)	4	ROE Collection Center to support Temporary Roofing Operations.	ROE Collection Center Old Gretna Elementary School, 706 Martin Luther King Jr. Blvd, Gretna, FL 32332 USNG: 16R GU 24702 88161 10/25/2018 0700 EDT	Gadsden County
Shelter Transition Crew 4	ESF 06: Mass Care	Deborah Hill (F)	202-431-6091 (F)	2	Register new applicants, conduct thorough case reviews, make NEMIS updates as needed, and provide direction to the survivor on eligibility for FEMA programs.	Gretna Elementary School 706 Martin Luther King Jr Blvd, Gretna, FL 32332 USNG: 16R GU 24696 88309 10/25/2018 0800 EDT	Gadsden County Safety: water, no open toe shoes, hand sanitizer

DSA Crew 8	Disaster Survivor Assistance	Alexandra Santiago (F)	202-717-1805 (F)	8	Registering survivors and conducting assess, inform, report (AIR) mission in Quincy, Gretna and Chattahoochee areas.	<p>Quincy City Hall</p> <p>404 West Jefferson Street, Quincy, FL 32351</p> <p>USNG: 16R GU 31869 86452</p> <p>10/25/2018 0800 EDT</p>	<p>Gadsden County</p> <p>Personal Protective Equipment (PPE): water, insect repellent, no open toe shoes, sat. phone, hand sanitizer.</p> <p>Safety: Be alert for reptiles that may be in the area.</p>
Disaster Recovery Center #7	Individual Assistance - DRCs	James O'Neill (F)	609-508-2200 (F)	8	Operate a Disaster Recovery Center (DRC) in the County of Leon, to provide access and direct support to survivors through FEMA Individual Assistance (IA), registration intake, referral, case management, Small Business Administration (SBA) loan support and Hazard Mitigation.	<p>DRC #7 - (Old) Gretna Elementary School</p> <p>706 Martin Luther King Jr, Blvd, , Gretna , FL, 32332</p> <p>USNG: 16R GU 24696 88309</p> <p>10/25/2018 0800 EDT</p>	<p>Gadsden County</p> <p>Hours of Operations:</p> <p>Monday - Sunday: 0800 - 1900 EDT</p>

Communications (radio frequency/channel information and/or phone contact numbers needed for this assignment):
N/A

FEMA ICS 204 FORM DIVISION ASSIGNMENT LIST	1. FEMA Disaster Number: DR-4399-FL	2. Operational Period: 10/25/2018 0700 to 10/26/2018 0700	5. Prepared By: Jose Lizama Date 10/24/2018
---	---	---	--

3. Branch: Branch III	4. Division / Group: Jackson County	6. Reviewed By (OSC-State): Ashley Davis Date 10/24/2018
------------------------------	--	---

9. Operations Personnel: Position/Contact Information OSC (State): Ashley Davis 850-544-8373 ashley.davis@em.myflorida.com OSC (FEMA): Dominique Lenox 312-408-5322 dominique.lenox@fema.dhs.gov Branch Director (State): Nigel Baker 561-308-4102 nbaker@pbcgov.org Branch Director (FEMA): Timothy Manner 202-531-9544 timothy.manner@fema.dhs.gov Div/Group Supervisor (State): SSG Eugenia Booth 904-599-6579 N/A Div/Group Supervisor (FEMA): Dennis Mangioni 202-718-3877 dennis.mangioni@fema.dhs.gov	7. Reviewed By (PSC-State): Ryan Lock Date 10/24/2018
	8. Reviewed By (OSC-FEMA): Dominique Lenox Date 10/24/2018
	9. Reviewed By (PSC-FEMA): Jordan Nelms Date 10/24/2018

10. Resources Assigned							
Resource Identifier	Functional Area	Resource Leader Name	Leader Contact Information	Total # of Persons	Work Assignment	Reporting Location/Time	Logistical needs, Special Instruction, additional information
FCV / TAC-Ku - Marianna	ESF 02: Communications	James G. Gay (F)	N/A	3	Provide emergency communications support in Jackson County.	Marianna, FL USNG: 16R FV 68516 06051 10/25/2018 0700 EDT	Jackson County Contact Logistics to communicate with MERS Team
MEOV-32 - Marianna	ESF 02: Communications	Morris Taylor (F)	N/A	3	Provide emergency communications support in Jackson County.	Marianna, FL USNG: 16R FV 68516 06051 10/25/2018 0700 EDT	Jackson County Contact Logistics to communicate with MERS Team

ROE Collection Center - Jackson	ESF 03: Public Works	Josh Marx (O)	816-604-9905 (O)	4	ROE Collection Centers to support Temporary Roofing Operations.	ROE Collection Center - Tractor Supply 2899 FL-77, Marianna, FL USNG: 16R FV 68516 06051 10/25/2018 0700 EDT	Jackson County
Shelter Transition Crew 3	ESF 06: Mass Care	Jeffrey Macek (F)	202-765-5838 (F)	5	Register new applicants, conduct thorough case reviews, make NEMIS updates as needed, and provide direction to the survivor on eligibility for FEMA programs.	County Agricultural Center 3631 US Highway 90, Marianna, FL 32448 USNG: 16R FV 58803 06949 10/25/2018 0800 EDT	Jackson County Safety: water, no open toe shoes, hand sanitizer
Intergovernmental Affairs Specialist 24	ESF 15: External Affairs	William Arwood (F)	404-895-7341 (F)	2	Introductory meeting with Mayor James Elmore to discuss FEMA programs.	Cottdale City Hall 2659 Front St. C, Cottdale, FL 32431 USNG: 16R FV 55289 08101 10/25/2018 1000 EDT	Working Cottdale in Jackson County
DSA Crew 3a	Disaster Survivor Assistance	Karen Rothermund-Aker (F)	202-355-8127 (F)	4	Register survivors and conduct assess, inform, report (AIR) mission to identify critical emerging issues in the Sneads area.	DRC Jackson 2737 Penn Avenue, Marianna, FL 32448 USNG: 16R FV 67046 04860 10/25/2018 0800 EDT	Jackson County Personal Protective Equipment (PPE): water, insect repellent, no open toe shoes, sat. phone, hand sanitizer. Safety: Be alert for reptiles that may be in the area.
DSA Crew 3b	Disaster Survivor Assistance	Phillip Shedd (F)	202-316-3635 (F)	4	Register survivors and conduct assess, inform, report (AIR) mission to identify critical emerging issues at shelter in Jacobs area.	DRC Jackson 2737 Penn Avenue, Marianna, FL 32448 USNG: 16R FV 67046 04860 10/25/2018 0800 EDT	Jackson County Personal Protective Equipment (PPE): water, insect repellent, no open toe shoes, sat. phone, hand sanitizer. Safety: Be alert for reptiles that may be in the area.

DSA Crew 3c	Disaster Survivor Assistance	Don Nelson (F)	202-704-1529 (F)	4	Register survivors and conduct assess, inform, report (AIR) mission to identify critical emerging issues in Jackson County.	DRC Jackson 2737 Penn Avenue, Marianna, FL 32448 USNG: 16R FV 67046 04860 10/25/2018 0800 EDT	Jackson County Supporting MCOV-45 at Lowes Personal Protective Equipment (PPE): water, insect repellent, no open toe shoes, sat. phone, hand sanitizer. Safety: Be alert for reptiles that may be in the area.
DSA Crew 3d	Disaster Survivor Assistance	Faye Nichols (F)	732-939-8641 (F)	5	Register survivors and conduct assess, inform, report (AIR) mission to identify critical emerging issues in Jackson County.	DRC Jackson 2737 Penn Avenue, Marianna, FL 32448 USNG: 16R FV 67046 04860 10/25/2018 0800 EDT	Jackson County Supporting the DRC Personal Protective Equipment (PPE): water, insect repellent, no open toe shoes, sat. phone, hand sanitizer. Safety: Be alert for reptiles that may be in the area.
Disaster Recovery Center #3	Individual Assistance - DRCs	Blas Anes (F)	202-631-9411 (F)	8	Operate a Disaster Recovery Center (DRC) in the County of Leon, to provide access and direct support to survivors through FEMA Individual Assistance (IA), registration intake, referral, case management, Small Business Administration (SBA) loan support and Hazard Mitigation.	DRC #3 - University Extension Office 2737 Penn Avenue, Marianna, FL, 32448 USNG: 16R FV 67046 04860 10/25/2018 0800 EDT	Jackson County Hours of Operations: Monday - Sunday: 0800 - 1900 EDT

Communications (radio frequency/channel information and/or phone contact numbers needed for this assignment):

N/A

FEMA ICS 204 FORM DIVISION ASSIGNMENT LIST	1. FEMA Disaster Number: DR-4399-FL	2. Operational Period: 10/25/2018 0700 to 10/26/2018 0700	5. Prepared By: Jose Lizama	Date 10/24/2018
---	---	---	---------------------------------------	---------------------------

3. Branch: Branch III	4. Division / Group: Liberty County	6. Reviewed By (OSC-State): Ashley Davis	Date 10/24/2018
------------------------------	--	--	---------------------------

9. Operations Personnel: Position/Contact Information		7. Reviewed By (PSC-State): Ryan Lock	Date 10/24/2018
OSC (State): Ashley Davis 850-544-8373 ashley.davis@em.myflorida.com OSC (FEMA): Dominique Lenox 312-408-5322 dominique.lenox@fema.dhs.gov Branch Director (State): Nigel Baker 561-308-4102 nbaker@pbcgov.org Branch Director (FEMA): Timothy Manner 202-531-9544 timothy.manner@fema.dhs.gov Div/Group Supervisor (State): SGT Donald Sanchez 352-283-1208 N/A Div/Group Supervisor (FEMA): William Roberts 816-621-9535 william.roberts@fema.dhs.gov		8. Reviewed By (OSC-FEMA): Dominique Lenox	Date 10/24/2018
		9. Reviewed By (PSC-FEMA): Jordan Nelms	Date 10/24/2018

10. Resources Assigned

Resource Identifier	Functional Area	Resource Leader Name	Leader Contact Information	Total # of Persons	Work Assignment	Reporting Location/Time	Logistical needs, Special Instruction, additional information
Speakers Bureau Task Force	ESF 15: External Affairs	Denny Machuca-Grebe (F)	202-706-2278 (F)	8	To provide community members disaster related updates and information to help begin the recovery process.	Bristol Community Meeting 14745 Highway 12 S, Bristol, FL 32321 USNG: 16R FU 98644 73183 10/25/2018 1900 EDT	Liberty County

DSA Crew 10a	Disaster Survivor Assistance	John Conti (F)	202-550-5208 (F)	5	Conducting survivor registration intake, case inquiry and updates, and referrals to whole community partners in Liberty County, supporting MRIC-8.	Veterans Memorial Civic Center 10405 NW Cotheo Jacobs Way, Bristol, FL 32321 USNG: 16R FU 94215 67375 10/25/2018 0800 EDT	Liberty County Located in new DRC. MCOV-108 is supporting. POD is also in this location. Personal Protective Equipment (PPE): water, insect repellent, no open toe shoes, sat. phone, hand sanitizer. Safety: Be alert for reptiles that may be in the area.
DSA Crew 10b	Disaster Survivor Assistance	Tiffany Harrison (F)	202-377-9827 (F)	4	Conducting survivor registration intake, case inquiry, updates and referral assistance in the community of Sumatra, FL.	Hosford Vounteer Fire Department 17111 Highway 65, Hosford, FL 32334 USNG: 16R GU 11544 63526 10/25/2018 0800 EDT	Liberty County Travel from DRC to Sumatra Assembly of God Church at 10428 SW 8th Street, Bristol (Sumatra), FL Personal Protective Equipment (PPE): water, insect repellent, no open toe shoes, sat. phone, hand sanitizer. Safety: Be alert for reptiles that may be in the area.
DSA Crew 20	Disaster Survivor Assistance	Loan Kim Bui (F)	202-617-1103 (F)	7	Register survivors and conduct AIR (assess, inform, and report) mission and canvass Hosford zip code 32334.	Telogia Vounteer Fire Station 17111 State Road 65, Hosford, FL 32334 USNG: 16R GU 11544 63526 10/25/2018 0800 EDT	Liberty County Supporting POD in zip code 32321 (3 DSA staff) and supporting community outreach (4 DSA staff) Personal Protective Equipment (PPE): water, insect repellent, no open toe shoes, sat. phone, hand sanitizer. Safety: Be alert for reptiles that may be in the area.

Business Recovery Center 4	Small Business Administration	Eric Shaw (O)	404-895-8439 (O)	3	Provide Information to disaster survivors regarding the Small Business Administration (SBA) Disaster loan programs.	Veteran Memorial Civic Center 10561 NW Theo Jacobs Way, Bristol, FL 32321 USNG: 16R FU 94254 67375 10/25/2018 0900 EDT	Liberty County Operating Hours: Monday – Saturday 0900EDT to 1800EDT Closed on Sundays
Disaster Recovery Center # 8	Individual Assistance - DRCs	Karen, Smith (F)	202-664-9619 (F)	8	Operate a Disaster Recovery Center (DRC) in the County of Liberty, to provide access and direct support to survivors through FEMA Individual Assistance (IA), registration intake, referral, case management, Small Business Administration (SBA) loan support and Hazard Mitigation.	DRC #8 - Veterans Memorial Park 10405 NW Theo Jacobs Way , Bristol, FL, 32321 USNG: 16R FU 94215 67375 10/25/2018 0800 EDT	Liberty, County, DRC - # 8 Hours of Operations: Monday - Sunday: 0800 - 1900 EDT

Communications (radio frequency/channel information and/or phone contact numbers needed for this assignment):
N/A

FEMA ICS 204 FORM BRANCH ASSIGNMENT LIST	1. FEMA Disaster Number: DR-4399-FL	2. Operational Period: 10/25/2018 0700 to 10/26/2018 0700	5. Prepared By: Jose Lizama	Date 10/24/2018
---	---	---	---------------------------------------	---------------------------

3. Branch: Branch IV	4. Division / Group: N/A	6. Reviewed By (OSC-State): Ashley Davis	Date 10/24/2018
-----------------------------	---------------------------------	--	---------------------------

10. Operations Personnel: Position/Contact Information		7. Reviewed By (PSC-State): Ryan Lock	Date 10/24/2018
OSC (State): Ashley Davis 850-544-8373 ashley.davis@em.myflorida.com OSC (FEMA): Dominique Lenox 312-408-5322 dominique.lenox@fema.dhs.gov Branch Director (State): Willie Bouie 850-519-1469 Willie.Bouie@em.myflorida.com Branch Director (FEMA): Thomas Dargan 330-980-6646 thomas.dargan@fema.dhs.gov Div/Group Supervisor (State): N/A Div/Group Supervisor (FEMA): N/A		8. Reviewed By (OSC-FEMA): Dominique Lenox	Date 10/24/2018
		9. Reviewed By (PSC-FEMA): Jordan Nelms	Date 10/24/2018

11. Resources Assigned							
Resource Identifier	Functional Area	Resource Leader Name	Leader Contact Information	Total # of Persons	Work Assignment	Reporting Location/Time	Logistical needs, Special Instruction, additional information
USGS High Water Mark Crew 2	ESF 05: Info and Planning	Kevin Grimsley (O)	813-267-2321 (O)	10	Recover storm surge recording sensors and document field measurements of maximum storm surge elevation.	Franklin County, FL USNG: 16R FT 95069 90122 10/25/2018 0700 EDT	Franklin and Wakulla Counties
Media Relations Team 2	ESF 15: External Affairs	Victor Inge (F)	202-805-6475 (F)	2	Conduct outreach and support messaging to media outlets in Wakulla and Franklin counties.	Wakulla County USNG: 16R GU 52761 41405 10/25/2018 0700 EDT	Wakulla and Franklin Counties

Communications (radio frequency/channel information and/or phone contact numbers needed for this assignment):
N/A

FEMA ICS 204 FORM DIVISION ASSIGNMENT LIST		1. FEMA Disaster Number: DR-4399-FL		2. Operational Period: 10/25/2018 0700 to 10/26/2018 0700		5. Prepared By: Jose Lizama		Date 10/24/2018
3. Branch: Branch IV			4. Division / Group: Franklin County			6. Reviewed By (OSC-State): Ashley Davis		Date 10/24/2018
9. Operations Personnel: Position/Contact Information						7. Reviewed By (PSC-State): Ryan Lock		Date 10/24/2018
OSC (State): Ashley Davis 850-544-8373 ashley.davis@em.myflorida.com								
OSC (FEMA): Dominique Lenox 312-408-5322 dominique.lenox@fema.dhs.gov								
Branch Director (State): Willie Bouie 850-519-1469 Willie.Bouie@em.myflorida.com						8. Reviewed By (OSC-FEMA): Dominique Lenox		Date 10/24/2018
Branch Director (FEMA): Thomas Dargan 330-980-6646 thomas.dargan@fema.dhs.gov								
Div/Group Supervisor (State):						9. Reviewed By (PSC-FEMA): Jordan Nelms		Date 10/24/2018
Div/Group Supervisor (FEMA): Jasmin Cesko 202-704-8174 / 881-632-554-429 (Sat) jasmin.cesko@fema.dhs.gov								
10. Resources Assigned								
Resource Identifier	Functional Area	Resource Leader Name	Leader Contact Information	Total # of Persons	Work Assignment	Reporting Location/Time	Logistical needs, Special Instruction, additional information	
QRT-HHS OIG-7	ESF 13: Public Safety and Security	Scott Brown (O)	202-280-8490 (O)	4	Provide 24 hour Security for DRC-2.	DRC-2 (Carrabelle Public Library) 311 St. James Avenue, Carrabelle, FL 32322 USNG: 16R GU 25883 04485 10/25/2018 0700 EDT	Franklin County	

Intergovernmental Affairs Specialist 10	ESF 15: External Affairs	Tom Hardy (F)	718-747-4502 (F)	1	Conduct outreach and provide information about FEMA programs to local elected officials in Carrabelle.	Carrabelle City Hall 1001 Gray Ave, Carrabelle, FL 32322 USNG: 16R GU 26391 04990 10/25/2018 0700 EDT	Working in Carrabelle in Franklin County
DSA Crew 14	Disaster Survivor Assistance	Ouida Romious (F)	202-615-4143 (F)	7	Register survivors and conduct assess, inform, report (AIR) mission to identify critical emerging issues at MRICs in Franklin County.	Carabelle Public Library 311 James Avenue, Carabelle, FL 32322 USNG: 16R GU 25883 04485 10/25/2018 0800 EDT	Franklin County Personal Protective Equipment (PPE): water, insect repellent, no open toe shoes, sat. phone, hand sanitizer. Safety: Be alert for reptiles that may be in the area.
Disaster Recovery Center #2	Individual Assistance - DRCs	Claudette Coyle (F)	256-454-4496 (F)	8	Operate a Disaster Recovery Center (DRC) in the County of Leon, to provide access and direct support to survivors through FEMA Individual Assistance (IA), registration intake, referral, case management, Small Business Administration (SBA) loan support and Hazard Mitigation.	DRC #2 - Carrabelle Public Library 311 Saint James Avenue, Carrabelle, FL, 32322 USNG: 16R GU 25883 04485 10/25/2018 0800 EDT	Franklin Hours of Operations: Monday - Sunday: 0800 - 1900 EDT
Business Recovery Center 3	Small Business Administration	Eric Shaw (O)	404-895-8439 (O)	2	Provide information to disaster survivors regarding the Small Business Administration (SBA) Disaster loan programs.	Franklin County Public Library 311 St. James Avenue, Carrabelle, FL 32322 USNG: 16R GU 54030 42031 10/25/2018 0700 EDT	Franklin County Operating hours: Monday - Saturday: 0900 EDT - 1800 EDT Closed On Sundays

Communications (radio frequency/channel information and/or phone contact numbers needed for this assignment):

N/A

FEMA ICS 204 FORM DIVISION ASSIGNMENT LIST	1. FEMA Disaster Number: DR-4399-FL	2. Operational Period: 10/25/2018 0700 to 10/26/2018 0700	5. Prepared By: Jose Lizama Date 10/24/2018
---	---	---	--

3. Branch: Branch IV	4. Division / Group: Leon County	6. Reviewed By (OSC-State): Ashley Davis Date 10/24/2018
-----------------------------	---	---

9. Operations Personnel: Position/Contact Information OSC (State): Ashley Davis 850-544-8373 ashley.davis@em.myflorida.com OSC (FEMA): Dominique Lenox 312-408-5322 dominique.lenox@fema.dhs.gov Branch Director (State): Willie Bouie 850-519-1469 Willie.Bouie@em.myflorida.com Branch Director (FEMA): Thomas Dargan 330-980-6646 thomas.dargan@fema.dhs.gov Div/Group Supervisor (State): Div/Group Supervisor (FEMA): Donald Wenschhof 202-655-8821 donald.wenschhofiii@fema.dhs.gov	7. Reviewed By (PSC-State): Ryan Lock Date 10/24/2018 8. Reviewed By (OSC-FEMA): Dominique Lenox Date 10/24/2018 9. Reviewed By (PSC-FEMA): Jordan Nelms Date 10/24/2018
--	---

10. Resources Assigned							
Resource Identifier	Functional Area	Resource Leader Name	Leader Contact Information	Total # of Persons	Work Assignment	Reporting Location/Time	Logistical needs, Special Instruction, additional information
EOV-11 "Kentucky Trailer" - Tallahassee	ESF 02: Communications	Gregory Paquette (F)	N/A	13	Provide emergency communications support in Leon County.	Tallahassee, FL USNG: 16R GU 61379 70771 10/25/2018 0700 EDT	Leon County Contact Logistics to communicate with MERS Team
EOV-62 - Tallahassee	ESF 02: Communications	Paul Johnson (F)	N/A	9	Provide emergency communications support in Leon County.	Tallahassee, FL USNG: 16R GU 61379 70771 10/25/2018 0700 EDT	Leon County Contact Logistics to communicate with MERS Team

USACE Debris Technical Monitors	ESF 03: Public Works	Eric Cheng (O)	502-387-0608 (O)	2	Deploy debris technical monitors to observe debris removal operations in support of FEMA.	Leon County, FL USNG: 16R GU 52761 41405 10/25/2018 0700 EDT	Leon County
Service Access Team (SAT)	ESF 08: Health and Medical Services	Christye Brown (O)	678-595-5140 (O)	2	Provide case management/discharge support to Florida DOH Shelter Branch.	SEOC / IOF 2555 Shumard Oak Blvd, Tallahassee, FL, 32311-7844 USNG: 16R GU 66064 64872 10/25/2018 0700 EDT	Leon County US Public Health Service Access Team (SAT)
Media Relations Team 3	ESF 15: External Affairs	Rena Gaskins (F)	202-702-7595 (F)	1	Conduct outreach and support messaging to media outlets in Leon county.	SEOC / IOF 2555 Shumard Oak Blvd, Tallahassee, FL, 32311-7844 USNG: 16R GU 66064 64872 10/25/2018 0700 EDT	Leon County
Intergovernmental Affairs Specialist 12	ESF 15: External Affairs	Nick Barbknecht (O)	202-365-7768 (O)	1	Conduct outreach and provide information about FEMA programs to local elected officials in Tallahassee.	Tallahassee City Hall 300 S. Adams St, Tallahassee, FL 32301 USNG: 16R GU 61026 70652 10/25/2018 0700 EDT	Working in Tallahassee in Leon County

DSA Crew 12	Disaster Survivor Assistance	Debra Urquhart (F)	732-804-7969 (F)	7	Register survivors and conduct assess, inform, report (AIR) mission.	<p>Leon County Emergency Management</p> <p>911 A Easterwood Drive Tallahassee, FL 32311</p> <p>USNG: 16R GU 66719 71997</p> <p>10/25/2018 0800 EDT</p>	<p>Leon County</p> <p>Personal Protective Equipment (PPE): water, insect repellent, no open toe shoes, sat. phone, hand sanitizer.</p> <p>Safety: Be alert for reptiles that may be in the area.</p>
Disaster Recovery Center #4	Individual Assistance - DRCs	Patricia Lewis (F)	202-506-0859 (F)	8	Operate a Disaster Recovery Center (DRC) in the County of Leon, to provide access and direct support to survivors through FEMA Individual Assistance (IA), registration intake, referral, case management, Small Business Administration (SBA) loan support and Hazard Mitigation.	<p>DRC #4 - LeRoy Collins Main Library</p> <p>200 W. Park Avenue, Tallahassee, FL, 32301</p> <p>USNG: 16R GU 60856 70923</p> <p>10/25/2018 0800 EDT</p>	<p>Leon County</p> <p>Hours of Operations:</p> <p>Monday - Sunday: 0800 - 1900 EDT</p>

Communications (radio frequency/channel information and/or phone contact numbers needed for this assignment):
N/A

FEMA ICS 204 FORM DIVISION ASSIGNMENT LIST	1. FEMA Disaster Number: DR-4399-FL	2. Operational Period: 10/25/2018 0700 to 10/26/2018 0700	5. Prepared By: Jose Lizama	Date 10/24/2018	
3. Branch: Branch IV		4. Division / Group: Wakulla County		6. Reviewed By (OSC-State): Ashley Davis	Date 10/24/2018
9. Operations Personnel: Position/Contact Information				7. Reviewed By (PSC-State): Ryan Lock	Date 10/24/2018
OSC (State): Ashley Davis 850-544-8373 ashley.davis@em.myflorida.com OSC (FEMA): Dominique Lenox 312-408-5322 dominique.lenox@fema.dhs.gov Branch Director (State): Willie Bouie 850-519-1469 Willie.Bouie@em.myflorida.com Branch Director (FEMA): Thomas Dargan 330-980-6646 thomas.dargan@fema.dhs.gov Div/Group Supervisor (State): Div/Group Supervisor (FEMA): Thomas Raymann 202-733-0344 thomas.raymann@fema.dhs.gov				8. Reviewed By (OSC-FEMA): Dominique Lenox	Date 10/24/2018
				9. Reviewed By (PSC-FEMA): Jordan Nelms	Date 10/24/2018

10. Resources Assigned							
Resource Identifier	Functional Area	Resource Leader Name	Leader Contact Information	Total # of Persons	Work Assignment	Reporting Location/Time	Logistical needs, Special Instruction, additional information
Intergovernmental Affairs Specialist 22	ESF 15: External Affairs	Mileka Ackie (F)	202-717-1655 (F)	3	Follow up meeting with St. Mark's Mayor Gail Gilman regarding the damages in the municipality.	St. Mark's City Hall 788 Port Leon Drive, St. Marks, FL 32355 USNG: 16R GU 69224 39570 10/25/2018 1000 EDT	Working in St. Mark in Wakulla County
Intergovernmental Affairs Specialist 23	ESF 15: External Affairs	Mileka Ackie (F)	202-717-1655 (F)	3	Introductory meeting with Sopchoppy Mayor Lara Edwards to discuss FEMA programs.	Sopchoppy City Hall 105 Municipal Avenue, Sopchoppy, FL 32358 USNG: 16R GU 41841 28309 10/25/2018 1300 EDT	Working in Sopchoppy in Wakulla County

Intergovernmental Affairs Specialist 26	ESF 15: External Affairs	Mileka Ackie (F)	202-717-1655 (F)	3	Follow up meeting with Public Works Administrator Nannette Watts regarding PA assessment of private roads and possible needs of senior citizens.	Wakulla County Government Office 338 Trice Lane, Crawfordville, FL 32327 USNG: 16R GU 53785 42199 10/25/2018 1500 EDT	Working in Crawford in Wakulla County
DSA Crew 11	Disaster Survivor Assistance	Luis Delgado (F)	202-805-6799 (F)	8	Register survivors and conduct assess, inform, report (AIR) mission to identify critical emerging issues in Wakulla County.	Wakulla County Emergency Management 35 Mike Stewart Drive, Wakulla, FL 32327 USNG: 16R GU 53991 45632 10/25/2018 0800 EDT	Wakulla County Canvassing Personal Protective Equipment (PPE): water, insect repellent, no open toe shoes, sat. phone, hand sanitizer. Safety: Be alert for reptiles that may be in the area.
Disaster Recovery Center #1	Individual Assistance - DRCs	Isabella Coleman (F)	347-906-4954 (F)	8	Operate a Disaster Recovery Center (DRC) in the County of Leon, to provide access and direct support to survivors through FEMA Individual Assistance (IA), registration intake, referral, case management, Small Business Administration (SBA) loan support and Hazard Mitigation.	DRC #1 - Wakulla County Community One Stop 318 Shadeville Highway, Crawfordville, FL, 32327 USNG: 16R GU 54084 42051 10/25/2018 0800 EDT	Wakulla Hours of Operations: Monday - Sunday: 0800 - 1900 EDT
Business Recovery Center 1	Small Business Administration	Eric Shaw (O)	404-895-8439 (O)	2	Provide Information to disaster survivors regarding the Small Business Administration (SBA) Disaster loan programs.	Wakulla County Community Center 322 Shadeville Highway, Crawfordville, Florida 32327 USNG: 16R GU 54030 42031 10/25/2018 0700 EDT	Wakulla County Operating hours: Monday - Saturday: 0900 EDT - 1800 EDT Closed On Sundays

Communications (radio frequency/channel information and/or phone contact numbers needed for this assignment):

N/A

FEMA ICS 204 FORM DIVISION ASSIGNMENT LIST	1. FEMA Disaster Number: DR-4399-FL	2. Operational Period: 10/25/2018 0700 to 10/26/2018 0700	5. Prepared By: Jose Lizama	Date 10/24/2018	
3. Branch: Branch V		4. Division / Group: Taylor County		6. Reviewed By (OSC-State): Ashley Davis	Date 10/24/2018
9. Operations Personnel: Position/Contact Information			7. Reviewed By (PSC-State): Ryan Lock	Date 10/24/2018	
OSC (State): Ashley Davis 850-544-8373 ashley.davis@em.myflorida.com OSC (FEMA): Dominique Lenox 312-408-5322 dominique.lenox@fema.dhs.gov Branch Director (State): N/A Branch Director (FEMA): Thomas Dargan 330-980-6646 thomas.dargan@fema.dhs.gov Div/Group Supervisor (State): TBD Div/Group Supervisor (FEMA): Thomas Raymann 202-733-0344 thomas.raymann@fema.dhs.gov			8. Reviewed By (OSC-FEMA): Dominique Lenox	Date 10/24/2018	
			9. Reviewed By (PSC-FEMA): Jordan Nelms	Date 10/24/2018	

10. Resources Assigned							
Resource Identifier	Functional Area	Resource Leader Name	Leader Contact Information	Total # of Persons	Work Assignment	Reporting Location/Time	Logistical needs, Special Instruction, additional information
Media Relations Team 3	ESF 15: External Affairs	Renae Gaskins (F)	202-702-7595 (F)	1	Conduct outreach and support messaging to media outlets in Taylor County.	Taylor County USNG: 17R KP 51605 34568 10/25/2018 EDT	Taylor County
DSA Crew 21	Disaster Survivor Assistance	Ayhan Batuk (F)	347-804-9855 (F)	2	Register survivors and conduct assess, inform, report (AIR) mission in the Lamont 32336 and Keaton Beach 32348 areas.	Taylor County Emergency Management Office 591 US 27, Perry, FL 32347 USNG: 17R KP 52111 33841 10/25/2018 0800 EDT	Taylor County Personal Protective Equipment (PPE): water, insect repellent, no open toe shoes, sat. phone, hand sanitizer. Safety: Be alert for reptiles that may be in the area.

Business Recovery Center 2	Small Business Administration	Eric Shaw (O)	404-895-8439 (O)	2	Provide Information to disaster survivors regarding the Small Business Administration (SBA) Disaster loan programs.	BRC 2 - Super Pufft Snacks 700 West Lance Drive, Perry, FL, 32348 USNG: 17R KP 50876 33398 10/25/2018 0700 EDT	Taylor County Operating hours: Monday - Saturday: 0900 EDT - 1800 EDT Closed On Sundays
----------------------------	-------------------------------	---------------	------------------	---	---	--	--

Communications (radio frequency/channel information and/or phone contact numbers needed for this assignment):
 N/A

FEMA ICS FORM 220 AIR OPERATIONS SUMMARY					FEMA Disaster Number:		Operational Period:	
		FEMA-DR-4399, Hurricane Michael			10/25/2018 0700EDT		10/26/2018 0700EDT	
Personnel and Communications								
Position		Name		Agency		Radio Frequency	4. Remarks (Safety Notes, Hazards, Special Equipment)	
Air Operations Branch Director		Daniel Scott		FEMA		202-384-7004	Daniel.Scott@FEMA.DHS.gov	
Air Operations Deputy Branch Director		Mark Hill		FEMA		202-717-0921	Mark.Hill.2@FEMA.DHS.gov	
		Ed Smith		FEMA		202-441-7251	Edward.Smith@FEMA.DHS.gov	
Rotary Wing Aircraft								
Make & Model	FAA # / Call Sign	Agency	Type	Base/Location	Assignment	Status	Start Date/Time	Remarks
AStar		CBP	Rotary	JAX	Federal	Available	25-Oct-18	Available for transport of pax/imagery-24 hour lead time
AStar		CBP	Rotary	JAX	Federal	Available	25-Oct-18	Available for transport of pax/imagery-24 hour lead time
UH-60		CBP	Rotary	MIA	Federal	Available	25-Oct-18	Needs 24 Hour Lead Time for Assignment
UH-60L		FLARNG	Rotary	BKV/VQQ	State	Standby	25-Oct-18	Availble for tasking (request NLT 1500hrs day prior)
UH-60L		FLARNG	Rotary	BKV/VQQ	State	Standby	25-Oct-18	Available for tasking (request NLT 1500hrs day prior)
UH-60L		FLARNG	Rotary	BKV/VQQ	State	Standby	25-Oct-18	Available for tasking (request NLT 1500hrs day prior)
6. Fixed Wing Aircraft								
Make & Model	FAA #		Type	Base/Location	Assignment	Status	Start Date/Time	Remarks
MEA		CBP	Fixed	JAX	Federal	Available	25-Oct-18	Available to Transport Pax/Cargo-Needs 24 hour lead time
C-182	N406CV	CAP	Fixed	KTLH	Federal	Available	25-Oct-18	Available for Imagery/Small Pax/Cargo Movements
C-172	N737NM	CAP	Fixed	KTLH	Federal	Available	25-Oct-18	Available for Imagery/Small Pax/Cargo Movements
C-172	N922CP	CAP	Fixed	KTLH	Federal	Available	25-Oct-18	Available for Imagery/Small Pax/Cargo Movements
Prepared by: Edward Smith					Date/Time Prepared: 10/24/2018 @1300			

FEMA ICS FORM 206 MEDICAL PLAN	1. FEMA Disaster Number: DR-4399-FL	2. Description: AFO and AFO Annex
---------------------------------------	---	---

3. Operational Period: 10/25/2018 0700 to 10/26/2018 0700

4. Medical Aid Stations

Name	Division	Locations	Phys	Para
------	----------	-----------	------	------

5. Ambulance Services

Name	Division	Address	Phone	Para	EMT
			911	Yes	Yes

6. Hospitals

Name	Division	Address	Phone	Helipad	Trauma Center	Burn Center
VA Tallahassee Outpatient Clinic		2181 Orange Ave., Tallahassee, FL 32311 USNG:16R GU 64458 67536	850-878-0191	No	No	No
Tallahassee Memorial HealthCare		1300 Miccosukee Road, Tallahassee, FL 32308 USNG:16R GU 62931 72485	850-431-1155	Yes	Yes	No
Capital Regional Medical Center		2626 Capital Medical Blvd., Tallahassee, FL 32308 USNG:16R GU 65858 74723	850-325-5000	Yes	No	No

7. Medical Emergency Procedures

- Report the emergency by first calling 9-1-1.
- Assist the injured/ill person(s) and provide comfort.
- If trained in First Aid and/or CPR/AED, you may offer medical assistance within your scope of training.
- When a medical emergency involves blood/body fluids, do not touch fluids without personal protective equipment (PPE).
- Do not attempt to move a person with suspected spinal injuries.
- Report the emergency to your supervisor and the Safety Officer.

8. Prepared By: Phil Adkins Date & Time: 10/24/2018 08:20:09 EDT	9. Reviewed by: Phil Adkins Date & Time: 10/24/2018 08:22:38 EDT
---	---

FEMA ICS FORM 206 MEDICAL PLAN	1. FEMA Disaster Number: DR-4399-FL	2. Description: Branch I
---------------------------------------	---	------------------------------------

3. Operational Period: 10/25/2018 0700 to 10/26/2018 0700

4. Medical Aid Stations

Name	Division	Locations	Phys	Para
------	----------	-----------	------	------

5. Ambulance Services

Name	Division	Address	Phone	Para	EMT
			911	Yes	Yes

6. Hospitals

Name	Division	Address	Phone	Helipad	Trauma Center	Burn Center
Gulf Coast Regional Medical Center (Emergencies Only)	Bay County	449 W. 23rd St., Panama City, FL 32405 USNG:16R FU 28410 40556	850-769-8341	No	No	No
Bay Medical Sacred Heart Hospital (Emergencies Only)	Bay County	615 N. Bonita Ave., Panama City, FL 32401 USNG:16R FU 30284 37252	850-769-1511	No	No	No
Sacred Heart on the Gulf	Gulf County	3801 US-98, Port St. Joe, FL 32456 USNG:16R FU 60518 05131	850-229-5600	Yes	Yes	Yes

7. Medical Emergency Procedures

- Report the emergency by first calling 9-1-1.
- Assist the injured/ill person(s) and provide comfort.
- If trained in First Aid and/or CPR/AED, you may offer medical assistance within your scope of training.
- When a medical emergency involves blood/body fluids, do not touch fluids without personal protective equipment (PPE).
- Do not attempt to move a person with suspected spinal injuries.
- Report the emergency to your supervisor and the Safety Officer.

8. Prepared By: Phil Adkins Date & Time: 10/24/2018 12:55:18 EDT	9. Reviewed by: Phil Adkins Date & Time: 10/24/2018 13:09:39 EDT
---	---

FEMA ICS FORM 206 MEDICAL PLAN	1. FEMA Disaster Number: DR-4399-FL	2. Description: Branch II
---------------------------------------	---	-------------------------------------

3. Operational Period: 10/25/2018 0700 to 10/26/2018 0700

4. Medical Aid Stations

Name	Division	Locations	Phys	Para
------	----------	-----------	------	------

5. Ambulance Services

Name	Division	Address	Phone	Para	EMT
			911	Yes	Yes

6. Hospitals

Name	Division	Address	Phone	Helipad	Trauma Center	Burn Center
Doctors Memorial Hospital	Holmes County	2600 Hospital Dr., Bonifay, FL 32425 USNG:16R FV 26097 03811	850-547-8000	Yes	No	No
Northwest Florida Community Hospital	Washington County	1360 Brickyard Rd., Chipley, FL 32428 USNG:16R FV 39476 04418	850-638-1610	Yes	No	No

(This section is currently blank.)

7. Medical Emergency Procedures

- Report the emergency by first calling 9-1-1.
- Assist the injured/ill person(s) and provide comfort.
- If trained in First Aid and/or CPR/AED, you may offer medical assistance within your scope of training.
- When a medical emergency involves blood/body fluids, do not touch fluids without personal protective equipment (PPE).
- Do not attempt to move a person with suspected spinal injuries.
- Report the emergency to your supervisor and the Safety Officer

8. Prepared By: Phil Adkins Date & Time: 10/24/2018 09:42:27 EDT	9. Reviewed by: Phil Adkins Date & Time: 10/24/2018 09:43:59 EDT
---	---

FEMA ICS FORM 206 MEDICAL PLAN	1. FEMA Disaster Number: DR-4399-FL	2. Description: Branch III
---------------------------------------	---	--------------------------------------

3. Operational Period: 10/25/2018 0700 to 10/26/2018 0700

4. Medical Aid Stations

Name	Division	Locations	Phys	Para
------	----------	-----------	------	------

5. Ambulance Services

Name	Division	Address	Phone	Para	EMT
			911	Yes	Yes

6. Hospitals

Name	Division	Address	Phone	Helipad	Trauma Center	Burn Center
Calhoun Liberty Hospital	Calhoun County	20370 Burns Ave., Blountstown, FL 32424 USNG:16R FU 87260 71167	850-674-5411	No	No	No
Gadsden Memorial Medical Center	Gadsden County	23186 Blue Star Hwy, Quincy, FL 32351 USNG:16R GU 35172 84458	850-875-6000	Yes	No	No
Jackson Hospital	Jackson County	4250 Hospital Dr., Marianna, FL 32446 USNG:16R FV 68315 07373	850-526-2200	Yes	No	No
Calhoun Liberty Hospital	Liberty County	20370 Burns Ave., Blountstown, FL 32424 USNG:16R FU 87260 71167	850-674-5411	Yes	No	No

7. Medical Emergency Procedures

- Report the emergency by first calling 9-1-1.
- Assist the injured/ill person(s) and provide comfort.
- If trained in First Aid and/or CPR/AED, you may offer medical assistance within your scope of training.
- When a medical emergency involves blood/body fluids, do not touch fluids without personal protective equipment (PPE).
- Do not attempt to move a person with suspected spinal injuries.
- Report the emergency to your supervisor and the Safety Officer.

8. Prepared By: Phil Adkins Date & Time: 10/24/2018 09:25:28 EDT	9. Reviewed by: Phil Adkins Date & Time: 10/24/2018 09:43:07 EDT
---	---

FEMA ICS FORM 206 MEDICAL PLAN	1. FEMA Disaster Number: DR-4399-FL	2. Description: Branch IV
---------------------------------------	---	-------------------------------------

3. Operational Period: 10/25/2018 0700 to 10/26/2018 0700

4. Medical Aid Stations

Name	Division	Locations	Phys	Para
------	----------	-----------	------	------

5. Ambulance Services

Name	Division	Address	Phone	Para	EMT
			911	Yes	Yes

6. Hospitals

Name	Division	Address	Phone	Helipad	Trauma Center	Burn Center
George E. Weems Memorial Hospital (Emergencies Only)	Franklin County	135 Avenue G, Apalachicola, FL 32320 USNG:16R FT 94290 89946	850-653-8853	No	No	No
Tallahassee Memorial Hospital	Leon County	1300 Miccosukee Road, Tallahassee, FL 32308 USNG:16R GU 62931 72485	850-431-1155	Yes	Yes	No
Tallahassee Memorial Hospital	Wakulla County	15 Council Moore Rd., Crawfordville, FL 32327 USNG:16R GU 52801 40740	850-926-7105	No	No	No

7. Medical Emergency Procedures

- Report the emergency by first calling 9-1-1.
- Assist the injured/ill person(s) and provide comfort.
- If trained in First Aid and/or CPR/AED, you may offer medical assistance within your scope of training.
- When a medical emergency involves blood/body fluids, do not touch fluids without personal protective equipment (PPE).
- Do not attempt to move a person with suspected spinal injuries.
- Report the emergency to your supervisor and the Safety Officer.

8. Prepared By: Phil Adkins Date & Time: 10/24/2018 09:39:26 EDT	9. Reviewed by: Phil Adkins Date & Time: 10/24/2018 09:44:31 EDT
---	---

FEMA ICS FORM 206 MEDICAL PLAN	1. FEMA Disaster Number: DR-4399-FL	2. Description: Branch V
---------------------------------------	---	------------------------------------

3. Operational Period: 10/25/2018 0700 to 10/26/2018 0700

4. Medical Aid Stations

Name	Division	Locations	Phys	Para
------	----------	-----------	------	------

5. Ambulance Services

Name	Division	Address	Phone	Para	EMT
			911	Yes	Yes

6. Hospitals

Name	Division	Address	Phone	Helipad	Trauma Center	Burn Center
Doctors Memorial Hospital	Taylor County	333 N. Byron Butler Pkwy, Perry, FL 32347 USNG:17R KP 50268 35043	850-584-0800	Yes	No	No

7. Medical Emergency Procedures

- Report the emergency by first calling 9-1-1.
- Assist the injured/ill person(s) and provide comfort.
- If trained in First Aid and/or CPR/AED, you may offer medical assistance within your scope of training.
- When a medical emergency involves blood/body fluids, do not touch fluids without personal protective equipment (PPE).
- Do not attempt to move a person with suspected spinal injuries.
- Report the emergency to your supervisor and the Safety Officer.

8. Prepared By: Phil Adkins Date & Time: 10/24/2018 16:10:44 EDT	9. Reviewed by: Phil Adkins Date & Time: 10/24/2018 16:10:54 EDT
---	---

FEMA ICS FORM 206 MEDICAL PLAN	1. FEMA Disaster Number: DR-4399-FL	2. Description: ISB Maxwell AFB
---------------------------------------	---	---

3. Operational Period: 10/25/2018 0700 to 10/26/2018 0700

4. Medical Aid Stations

Name	Division	Locations	Phys	Para
------	----------	-----------	------	------

5. Ambulance Services

Name	Division	Address	Phone	Para	EMT
			911	Yes	Yes

6. Hospitals

Name	Division	Address	Phone	Helipad	Trauma Center	Burn Center
Jackson Hospital		1725 Pine St., Montgomery, AL 36106 USNG:16S EA 67241 81297	334-293-8000	No	No	No
The Jackson Clinic and Urgent Care		1801 Pine St., Montgomery, AL 36106 USNG:16S EA 67377 81296	334-262-7444	No	No	No

7. Medical Emergency Procedures

- Report the emergency by first calling 9-1-1.
- Assist the injured/ill person(s) and provide comfort.
- If trained in First Aid and/or CPR/AED, you may offer medical assistance within your scope of training.
- When a medical emergency involves blood/body fluids, do not touch fluids without personal protective equipment (PPE).
- Do not attempt to move a person with suspected spinal injuries.
- Report the emergency to your supervisor and the Safety Officer.

8. Prepared By: Phil Adkins Date & Time: 10/24/2018 15:05:09 EDT	9. Reviewed by: Phil Adkins Date & Time: 10/24/2018 15:08:27 EDT
---	---

FEMA ICS FORM 230 INTERNAL DAILY MEETING SCHEDULE		1. FEMA Disaster Number: DR-4399-FL	2. Date/Time Prepared: 10/24/2018 0900 EDT
3. Operational Period (Date/Time): 10/25/2018 0700 EDT to 10/26/2018 0700 EDT			
Time / Time Zone	Meeting Name	Purpose / Attendees	Meeting Location
Monday			
N/A	N/A	N/A	N/A
Tuesday			
N/A	N/A	N/A	N/A
Wednesday			
N/A	N/A	N/A	N/A
Thursday			
0700 EDT	Operations Briefing	Brief personnel responsible for executing and supporting the IAP. BDs. DIVS/GRPS. TFLs. CRLDs and other personnel responsible for supporting the IAP.	SEOC Room 305 1-800-320-4330 Pin: 639480#
0730 EDT	State Command and General Staff Meeting	Review approved incident objectives. Provide, share important information and immediate direction. State, UCG, Command and General Staff, Situation Unit Leader, designated and invited guests.	SEOC Room 130D
0830 EDT	SERT AM Briefing	Conduct a transition briefing from night shift to day shift. Command and General Staff	SEOC
0830 EDT	FEMA HQ Daily Operations Briefing	Provide national situational awareness to FEMA Senior Leadership, headquarters and regional staff, and interested federal partners. FCO, OSC, PSC	1-800-320-4330 Muted PIN: 672000# Speaking PIN: Provided as needed to those with a coordinated speaking role.
0930 EDT	State Emergency Services Tactics Meeting	Review and finalize the draft Operational Planning Worksheets.	SEOC Room 130D
1000 EDT	State Mass Care Coordination Call	Coordinate state Mass Care activities. State Mass Care Staff	SEOC DCR
1115 EDT	State/County Conference Call	Provide statewide coordination and information sharing between the SEOC and statewide Counties. Command and General Staff	SEOC Room 130D
1200 EDT	Operations Tactics Meeting	Review and finalize the draft Operational Planning Worksheets (FEMA-ICS 215). All Operations personnel, ESF leads, Community Relations Lead responsible for Incident Action Planning, RESL, LSC, and SOFR.	SEOC Room 305 1-800-320-4330 Pin: 639480# https://fema.connectsolutions.com/FLmeetings/
1400 EDT	State Logistics Tactics Meeting	Discuss and coordinate logistics operations with state and federal partners. State Logistics Personnel, LSC	SEOC Room 130D
1600 EDT	State/FEMA Planning Meeting	Approve the IAP for the next operational period State, UCG, Command and General Staff, SITL, designated and invited guests.	SEOC Room 130D 1-800-320-4330 Pin: 639480#
1630 EDT	DRC Taskforce Coordination Call	Discuss and coordinate Disaster Recovery Center activities. State, Log, Safety, Security, DIA, ERO, IA, Mitigation, DSA, MERS, SBA.	1-800-320-4330 Pin: 295012#

1700 EDT	Federal Sync Meeting	Synchronize federal response efforts and discuss potential issues. Monday - Friday Command and General Staff	SEOC Room 310M 1-800-320-4330 Pin: 639480#
1715 EDT	State/County Conference Call	Provide statewide coordination and information sharing between the SEOC and statewide Counties. Command and General Staff	SEOC 130D
1800 EDT	SERT PM Briefing	Conduct a transition briefing from day shift to night shift. Command and General Staff	SEOC
Friday			
N/A	N/A	N/A	N/A
Saturday			
N/A	N/A	N/A	N/A
Sunday			
N/A	N/A	N/A	N/A
4. Prepared By: Jose Lizama, RESL		5. Reviewed By: David Clay, DPSC	

GENERAL MESSAGE (FEMA ICS FORM 213)

TO: All

POSITION: N/A

FROM: Planning

POSITION: N/A

SUBJECT: Critical Information Requirements (CIRs)

DATE/TIME: 10/24/2018 1215 EDT

MESSAGE:

1. Threat assessment of potential/likelihood of additional incidents (Confirmation of additional incidents, and are they single incidents)
2. Work-related Injury, Illness or Death of a team member, responder or civilian (Number of confirmed fatalities and corresponding locations, serious injuries, sudden illness, and hospitalization that trends for potential outbreak)
3. Significant loss or damage and threat to Federal facilities, personnel, systems, assets, , commodities, and operations (Incident that impacts and or threaten federal facilities, personnel, systems/assets, commodities, and operations)
4. Change to the Operational and or National Environment (Major change to Federal capabilities that would adversely affect the overall readiness of the United States to prevent or protect against a attack or any other incident)
5. Media Inquiries, Political Interest, Ethical Issues (Any situation that result in the loss of public trust/confidence, degradation of credibility and negative media coverage)
6. Additional Declarations (Any additional declarations and/or amendments to the current incident)

Anything listed as a Critical Information Requirement (CIR) is an immediate notifying event. In the event that one of the CIR triggers occur, the responsible party must contact the Situation Unit and the Planning Section as a whole.

Situation Unit: Kathryn.Hisek@fema.dhs.gov (202-705-6048)

Planning Section: Michael-FL-Planning@fema.dhs.gov

SIGNATURE: Kathryn (Kat) Hisek

POSITION: Situation Unit Leader

REPLY:

DATE/TIME: 10/24/2018 1215 EDT

SIGNATURE/POSITION: Kathryn Hisek, SITL

■ Never feed alligators – it’s dangerous and illegal. When fed, alligators can overcome their natural wariness and learn to associate people with food. When this happens, some of these alligators have to be removed and killed.

■ Dispose of fish scraps in garbage cans at boat ramps and fish camps. Do not throw them into the water. Although you are not intentionally feeding alligators when you do this, the result can be the same.

■ Seek immediate medical attention if you are bitten by an alligator. Alligator bites can result in serious infections.

■ Observe and photograph alligators only from a distance. Remember, they’re an important part of Florida’s natural history as well as an integral component of aquatic ecosystems.



Janice Plain

To report nuisance alligators call
866-FWC-GATOR (866-392-4286).



MyFWC.com/Alligator



Jamie Feddersen



Tim Donovan, FWC

Call 866-FWC-GATOR (392-4286) to report nuisance alligators.





Lizabeth West, FWC

Do not swim outside of posted swimming areas or in waters that may be inhabited by alligators.

Living with Alligators

In Florida, the growing number of people living and recreating near water has led to a steady rise in the number of alligator-related complaints. The majority of these complaints relate to alligators being where they simply aren't wanted. Because of these complaints, the Florida Fish and Wildlife Conservation Commission's Statewide Nuisance Alligator Program permits the killing of approximately 7,000 nuisance alligators each year. Using this approach, and through increased public awareness, the rate of alligator bites on people has remained constant despite the increased potential for alligator-human interactions as Florida's human population has grown.

Alligators are an important part of Florida's landscape and play a valuable role in the ecology of our state's wetlands. Alligators are predators and help keep other aquatic animal populations in balance. A better understanding of the facts and information presented in this brochure will help ensure that people and alligators can continue to coexist.

Visit MyFWC.com/Gators for more information about alligators and the latest nuisance alligator program statistics.



Tim Donovan, FWC

Alligators and People

Alligators are a fundamental part of Florida's wetlands, swamps, rivers and lakes, and they are found in all 67 counties. Florida continues to experience human population growth. Many new residents seek waterfront homes, resulting in increased interactions between people and alligators.

Although most Floridians understand that we have alligators living in our state, the potential for conflict exists. Because of their predatory nature, alligators may target pets and livestock as prey. Unfortunately, people also are occasionally bitten. Since 1948, Florida has averaged about five unprovoked bites per year. During that period, a little more than 300 unprovoked bites to people have been documented in Florida, with 22 resulting in deaths.

In the past 10 years, the Florida Fish and Wildlife Conservation Commission has received an average of nearly 16,000 alligator-related complaints per year. Most of these complaints deal with alligators occurring in places such as backyard ponds, canals, ditches and streams, but other conflicts occur when alligators wander into garages, swimming pools and golf course ponds. Sometimes, alligators come out of the water to bask in the sun or move between wetlands. In many cases, if left alone, these alligators will eventually move on to areas away from people.

Safety Tips

■ Generally, alligators less than four feet in length are not large enough to be dangerous unless handled. However, if you encounter any alligator that you believe poses a threat to people, pets or property,

call the Nuisance Alligator Hotline at 866-FWC-GATOR (866-392-4286). Please be aware, nuisance alligators are killed, not relocated.

- Be aware of the possibility of alligators when you are in or near fresh or brackish water. Bites may occur when people do not pay close enough attention to their surroundings when working or recreating near water.
- Do not swim outside of posted swimming areas or in waters that might be inhabited by large alligators.
- Alligators are most active between dusk and dawn. Therefore, avoid swimming at night.
- Dogs and cats are similar in size to the natural prey of alligators. Don't allow pets to swim, exercise or drink in or near waters that may contain alligators. Dogs often attract an alligator's interest, so do not swim with your dog.
- Leave alligators alone. State law prohibits killing, harassing or possessing alligators. Handling even small alligators can result in injury.



Tim Donovan, FWC

A young alligator wanders onto a porch in a residential neighborhood.