



# FEMA

## Daily Operations Briefing

Monday, October 22, 2018

8:30 a.m. EDT

# Central Texas Flooding *FINAL*



FEMA

## Situation:

Abundant moisture will interact with a stalled front in the Gulf of Mexico this week to generate locally heavy rainfall across the Gulf Coast region.

**Safety and Security:** SAR resources are prepositioned/staged and on standby

## **Food, Water, Sheltering:**

- 6 shelters / 2 (-19) Occupants (*FEMA Region VI EXSUM, October 21*)
- Boil water advisory I/E for Kingsland & Austin
- Three PODs (-1) distributing water/ice in the communities of Kingsland, Horseshoe Bay and Granite Shoals

**Communication:** Cell service is intermittent in the Kingsland-Llano county area

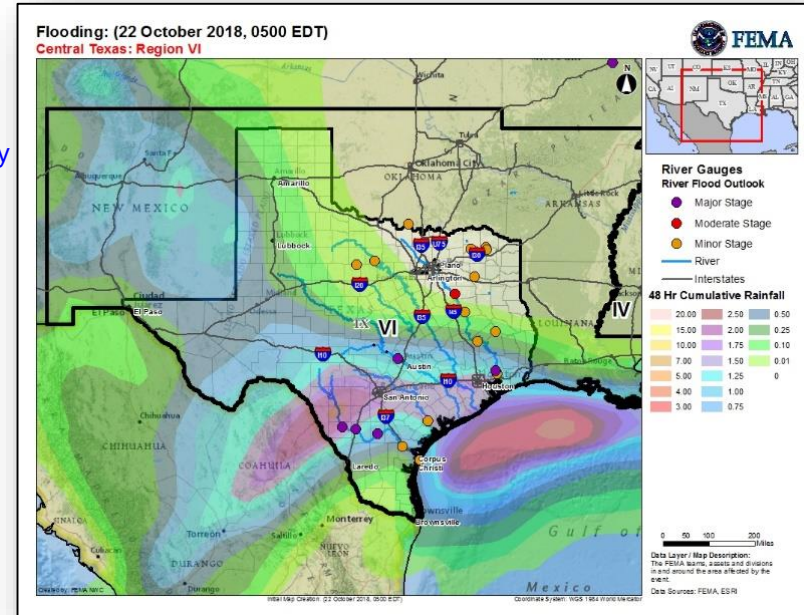
**Hazardous Waste:** Waste water plants remain operable with some restrictions

## **State/Local Response:**

- TX EOC at [Monitoring](#)
- The Governor declared a State of Emergency for 54 counties

## **FEMA Response:**

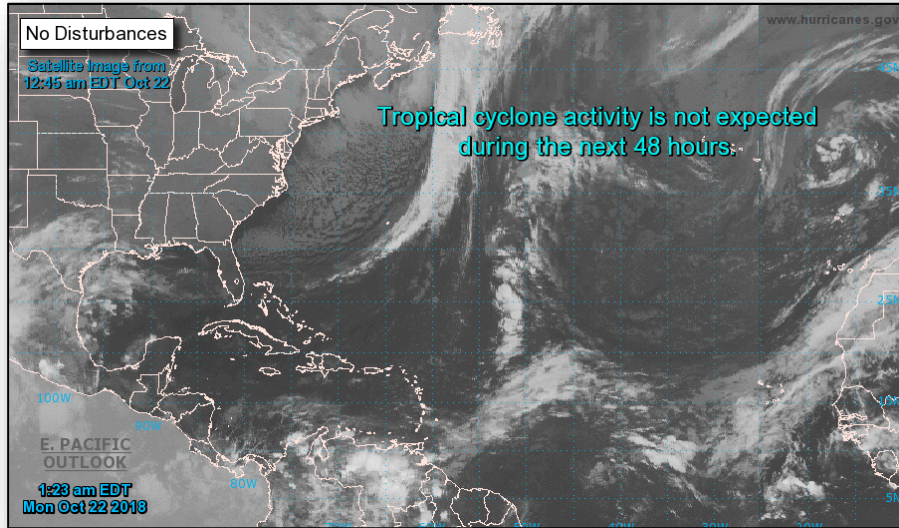
- Region VI RWC at Enhanced Watch (day shift)
- 4 LNOs deployed to TX EOC
- PDA teams on standby
- FEMA HQ NWC continues to monitor
- No requests for FEMA assistance; no unmet needs



# Tropical Outlook – Atlantic



FEMA



***48 Hour Outlook***



***5 Day Outlook***

# Tropical Outlook – Eastern Pacific



## Hurricane Willa (CAT-4) (Advisory #9 as of 5:00 a.m. EDT)

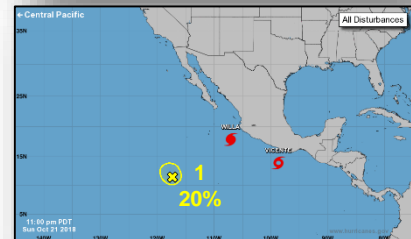
- About 175 miles SSW of Cabo Corrientes, Mexico
- Moving N at 7 mph
- Maximum sustained winds 155 mph
- Hurricane-force winds extend outward up to 30 miles
- Tropical-storm-force winds extend out 90 miles

## Tropical Storm Vicente (Advisory #12 as of 5:00 a.m. EDT)

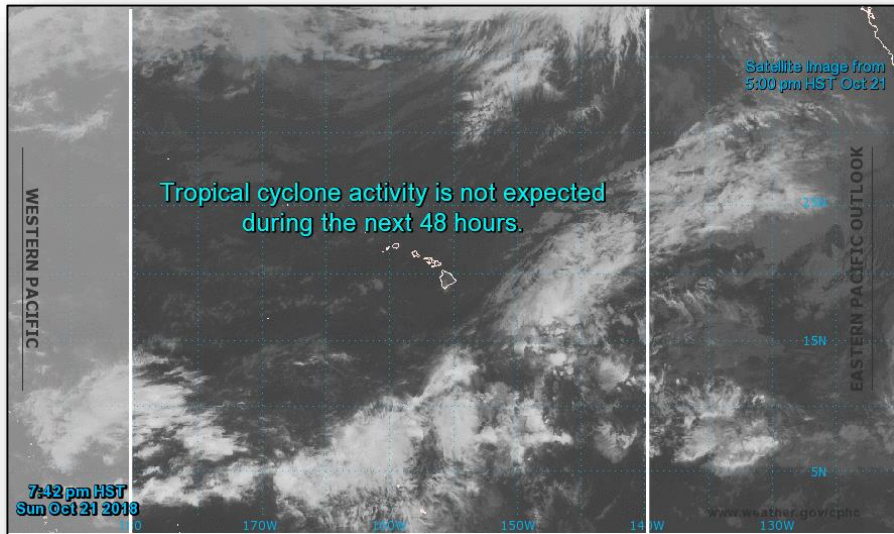
- Located 195 miles S of Acapulco, Mexico
- Moving W at 10 mph
- Maximum sustained winds 45 mph
- Expected to become a tropical depression tonight or Tuesday
- Tropical-storm-force winds extend out 45 miles

## Disturbance 1 (as of 2:00 a.m. EDT)

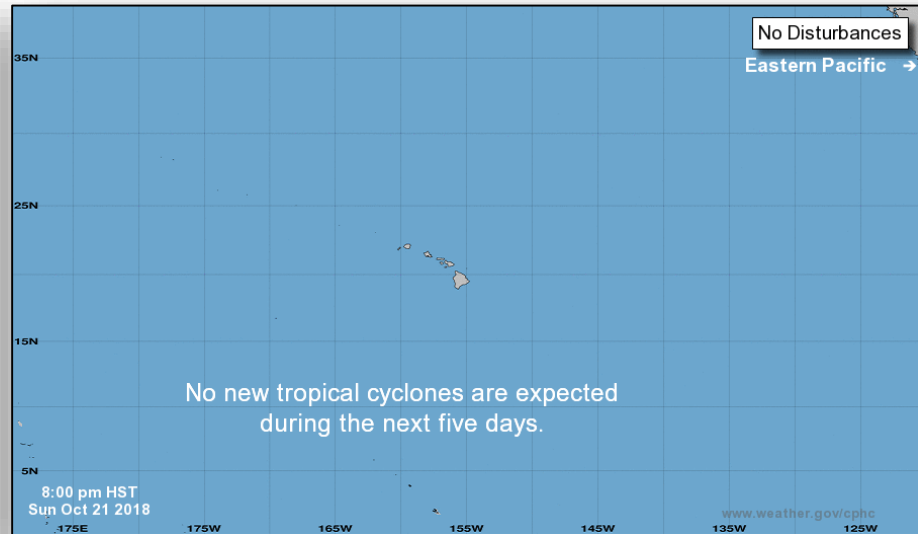
- Located 950 miles SSW of southern tip of Baja California
- Some slow development is possible
- Formation chance through 48 hours: Low (20%)
- Formation chance through 5 days: Low (20%)



# Tropical Outlook – Central Pacific



**48 Hour Outlook**



**5 Day Outlook**

# Tropical Outlook – Western Pacific



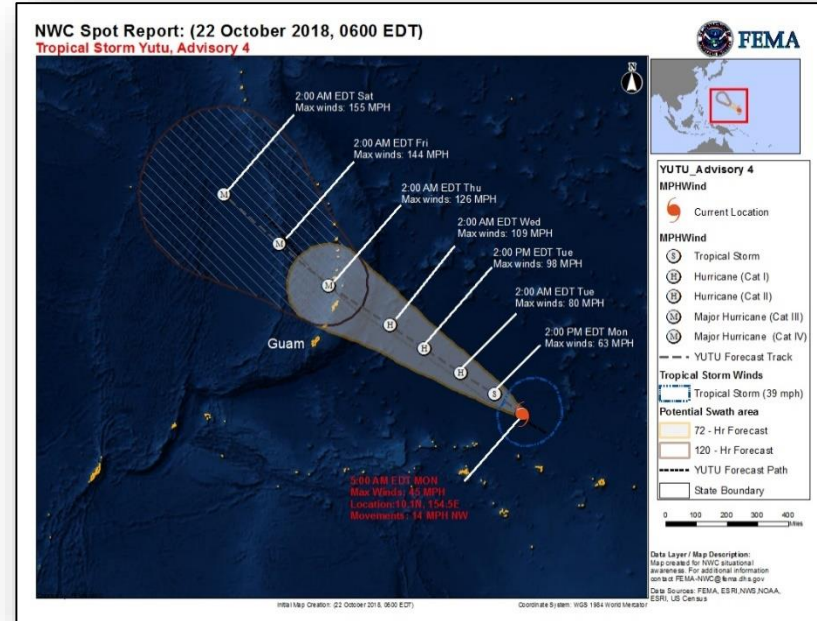
FEMA

## Tropical Storm Yutu (Warning # 4 as of 5:00 a.m. EDT)

- Located about 700 miles ESE of Andersen AB, Guam and 685 miles ESE of Saipan
- Maximum sustained winds 45 mph; Moving NW at 14 mph
- Forecast to become a CAT 3 or 4 typhoon Wednesday or Thursday
- Closest point of approach (CPA) to Guam is 167 miles at 1:00 pm EDT on October 24, and to Saipan, CNMI is 30 miles at 2:00 pm EDT on October 24
- Tropical storm force winds extend 140 miles
- Typhoon watches in effect for Tinian and Saipan; Tropical Storm watch for Rota

## Preparations

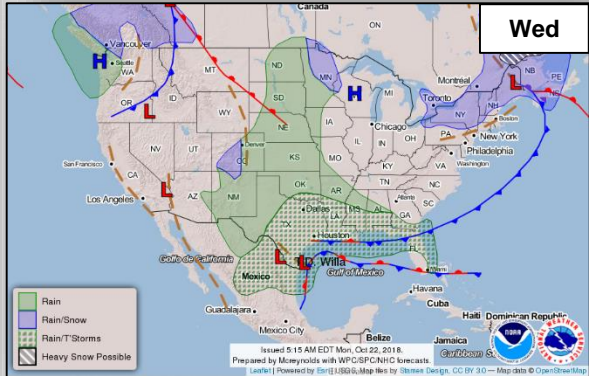
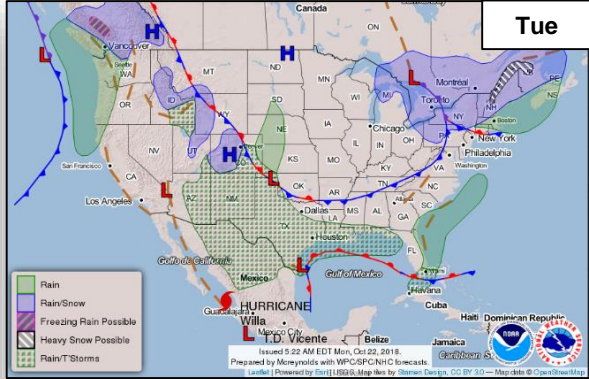
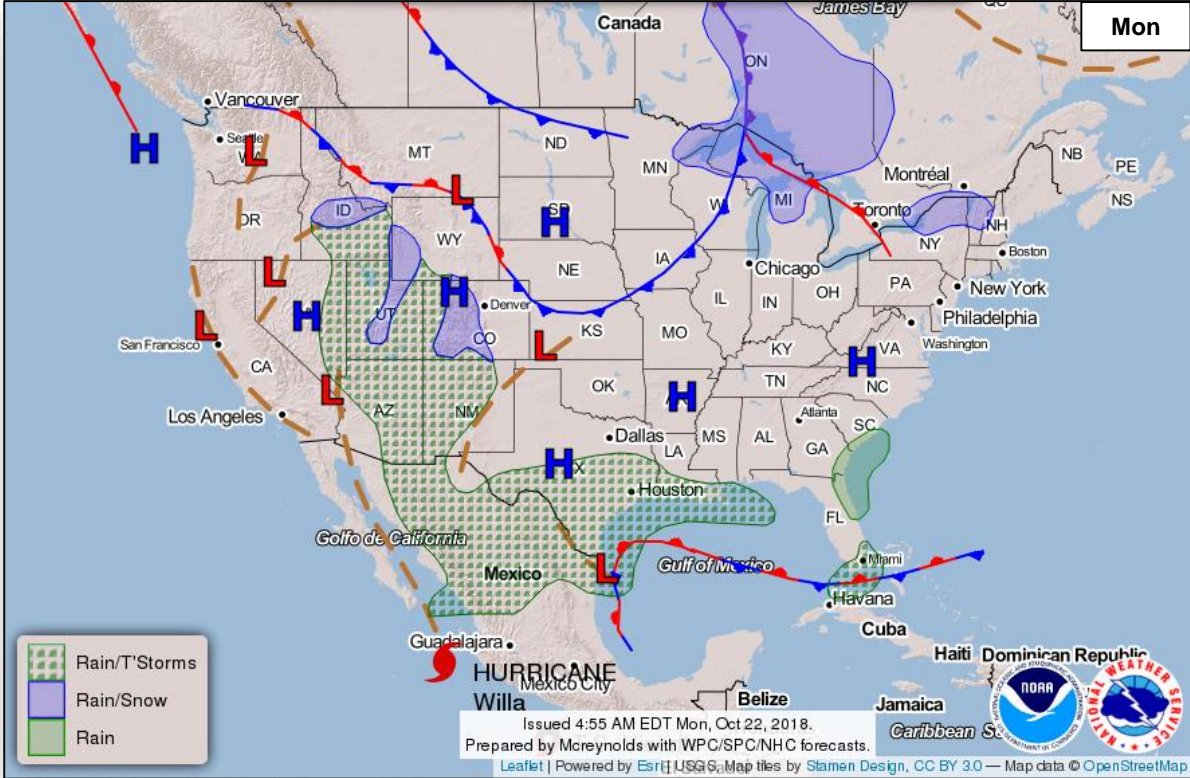
- Guam EOC at Normal Operations
- FEMA Region IX RWC at Steady State, continues to monitor
- FEMA Region IX IMAT-2 and LNOs deployed to Guam
- FEMA ISB team and MERS assets deployed to Guam
- HHS deployed DMAT and Incident Response Coordination Team (ICRT) to Guam



# National Weather Forecast



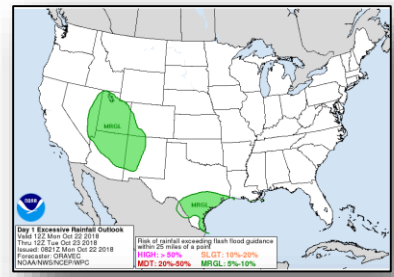
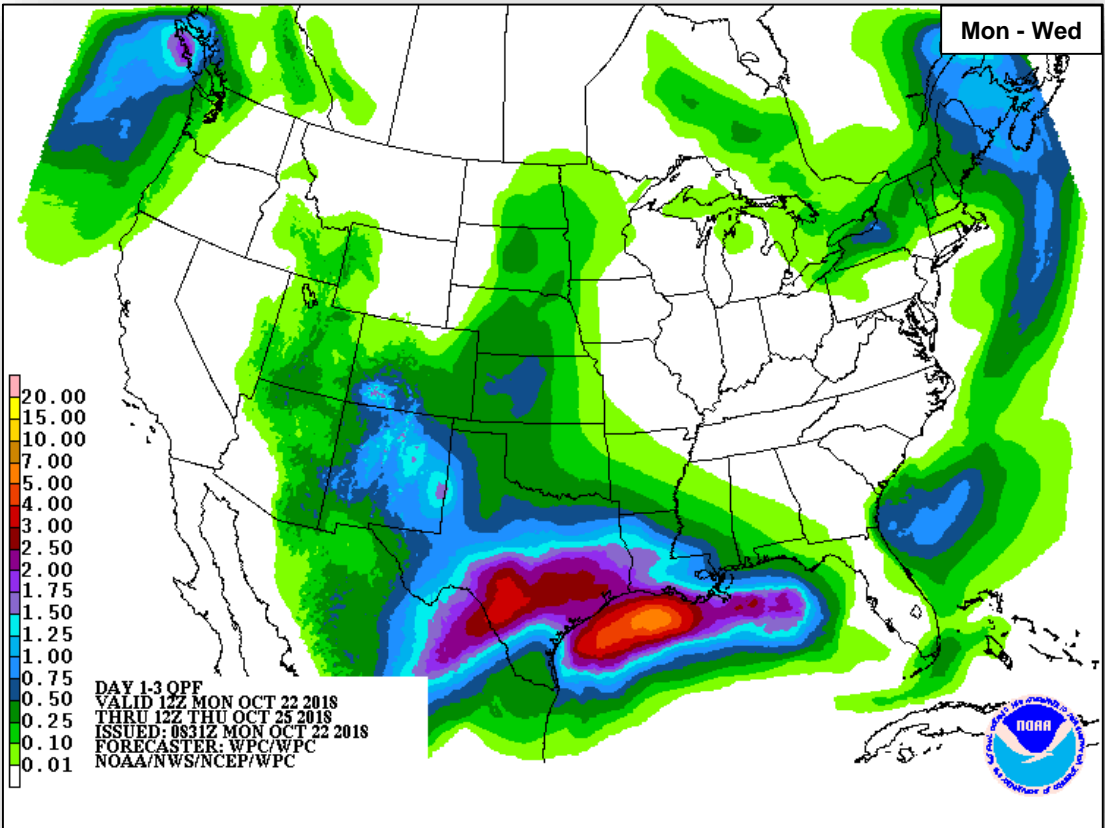
FEMA



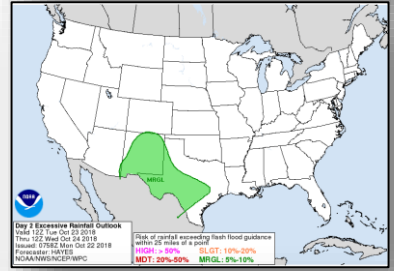
# Precipitation / Excessive Rainfall Forecast



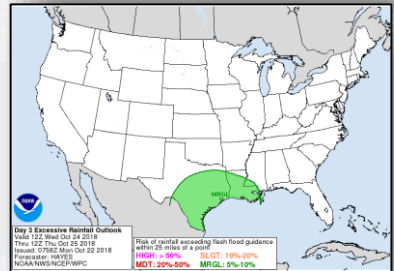
FEMA



Mon



Tue



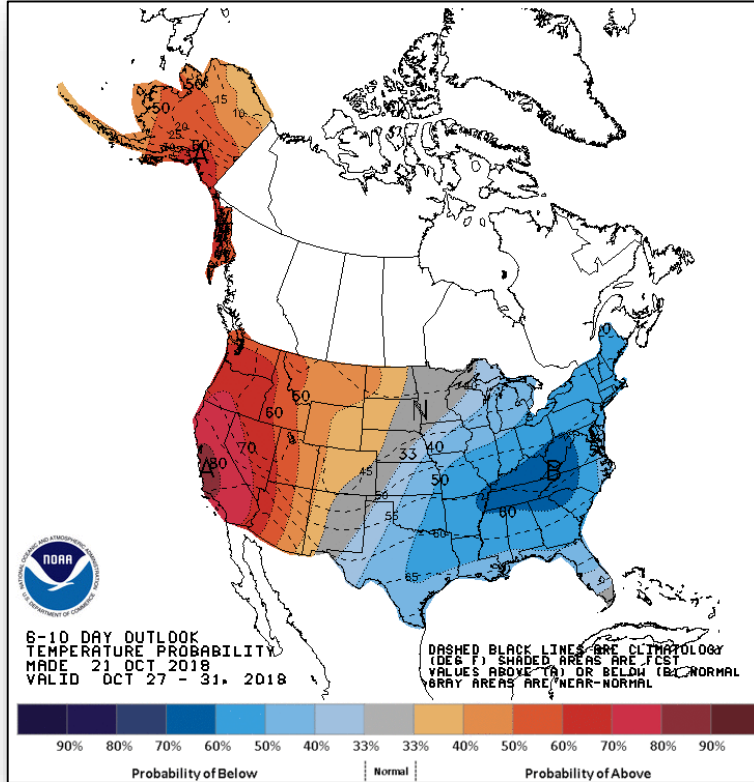
Wed



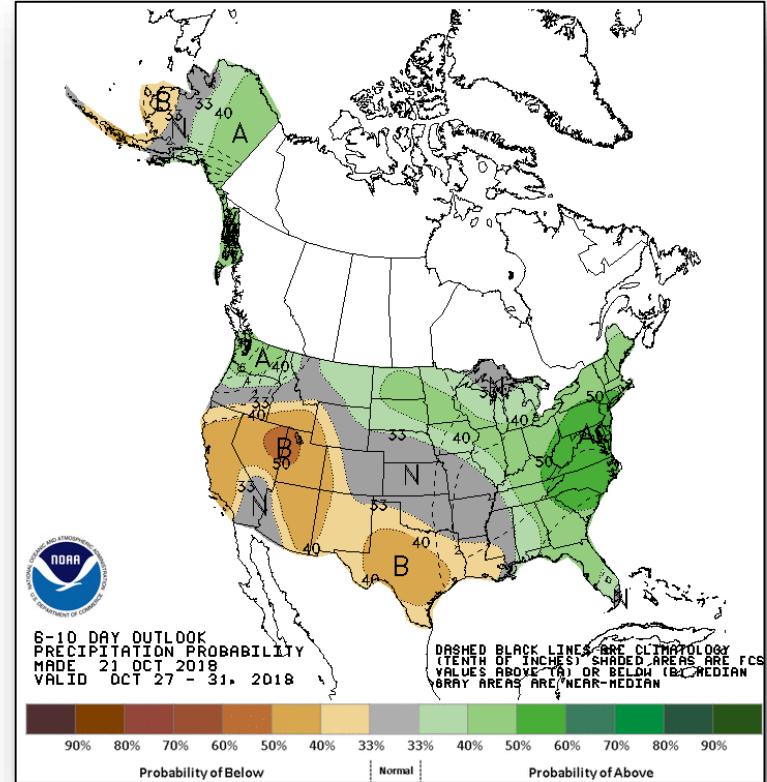
# Long Range Outlooks – Oct 27-31



FEMA



**6 - 10 Day Temperature Probability**



**6 - 10 Day Precipitation Probability**

# Winter Outlook



FEMA

NOAA Climate Prediction Center winter outlook for December 2018 to February 2019:

## Temperature

- Warmer than normal across much of northern and western U.S; No part favored for Below Average temperatures

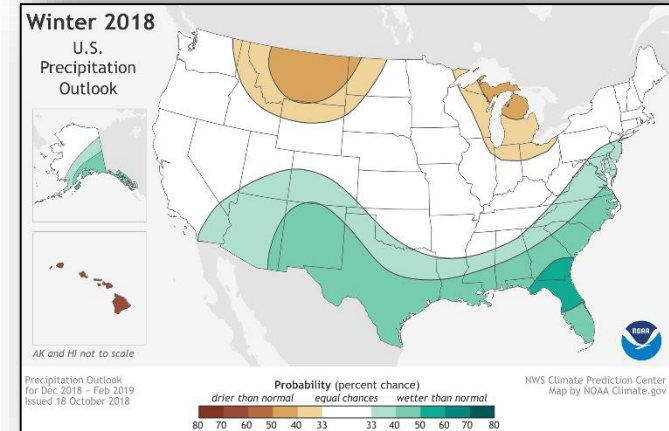
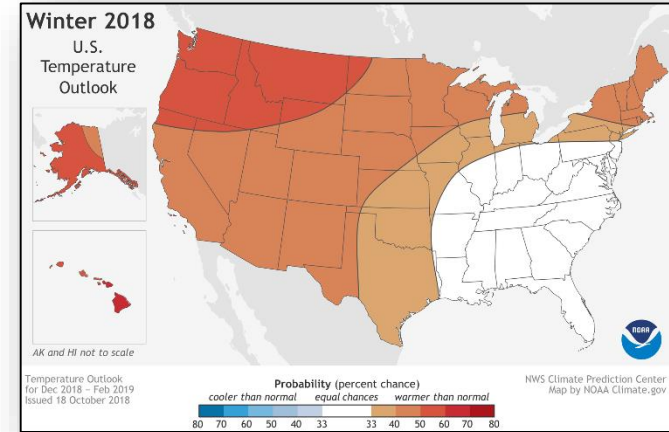
## Precipitation

- Wetter than average across southern tier of U.S up to Mid-Atlantic; north FL and south GA have the greatest odds for above average precipitation
- Drier than average in Northern Rockies and Plains, Great Lakes and northern Ohio Valley

## Drought

- Drought conditions likely to persist across Southwest, southern California, Great Basin, Central Rockies, Northern Plains and interior Pacific Northwest
- Drought conditions likely to improve in AZ, NM and southern UT and CO, the coastal Pacific Northwest and the Central Plains

LINK: [NOAA](https://www.noaa.gov)



# Disaster Requests & Declarations



FEMA

Declaration Requests in Process					Requests APPROVED (since last report)	Requests DENIED (since last report)
1	IA	PA	HM	Date Requested	0	0
NC – DR (Appeal) Severe Storms, Flooding, Landslides, and Mudslides	X	X	X	September 19, 2018		

# Joint Preliminary Damage Assessments



FEMA

Region	State / Location	Event	IA / PA	Number of Counties		Start – End
				Requested	Completed	
III	PA	Severe Weather August 10-15, 2018	IA	14	14	9/5 – 9/26
			PA	15	10	9/5 – TBD
	PA	Severe Weather July 21-27, 2018	IA	12	12	9/5 – 9/27
			PA	14	14	9/5 – 10/19
IV	AL	Hurricane Michael October 8, 2018 and continuing	IA	4	0	10/23 - TBD
			PA	6	0	10/23 - TBD
IX	Tohono O'odham Nation (AZ)	Flooding September 30 – October 2, 2018	IA	1	0	10/23 – TBD
			PA	1	0	10/23 - TBD

# Readiness – Deployable Teams and Assets



Resource	Force Strength	Available	Deployed	Other	Cadres with 25% or Less Availability
<b>IM Workforce</b>	12,293 ▼	2,082 ▼ 17%	6,737 ▲	3,474	DSA 7% (60/849); EA 21% (119/570); EHP 7% (28/427); ER 2% (1/44); FL 16% (25/159); FM 22% (59/273); HM 12% (122/1,020); HR 13% (32/249); IA 23% (664/2,912); IT 10% (65/635); LOG 10% (123/1,191); OPS 17% (46/276); PA 9% (175/1,910); PLAN 17% (57/343); SAF 7% (4/57); SEC 2% (2/117)
<b>National IMATs*</b> (1-2 Teams)	East :	Deployed			
Composite:	Deployed				
West:	B-2				
<b>Regional IMATs</b> (≤ 3 Teams)	Assigned:	13			
Available:	1				
PMC / NMC:	3				
Deployed:	9				
<b>National ISBs</b> (0 Teams)	Team A	Deployed			
Team B	Deployed				
Team C	Deployed				
<b>US&amp;R</b> (>66%)	Assigned:	28			
Available:	22 (+6)				
PMC / NMC:	6 (-6)				
Deployed:	0				
<b>MERS</b> (>33-65%)	Assigned:	36			
Available:	19				
PMC / NMC:	0				
Deployed:	17				
<b>FCO</b> (≥3 Type I)	Assigned:	32			
Available:	7				
PMC / NMC:	1				
Deployed:	24				
<b>FDRC</b> (≥3)	Assigned:	13			
Available:	4				
PMC / NMC:	2				
Deployed:	7				

As of 3:00 a.m. EDT Oct 22, 2018 Created by: FEMA NWC

\* **B-2 Status:** Assemble ≤ 2-hrs, On Site ≤ 18-hrs; **B-48 Status:** Assemble and deploy ≤ 48hrs; **Charlie Status:** No team assemble time requirement

# FEMA Readiness – Activation Teams



Status		Activated Team	Activation Level	Activation Times	Reason / Comments
<b>NWC</b> (5 Teams)	Steady State				
<b>NRCC</b> (2 Teams)	Not Activated				
<b>HLT</b>	Activated				
<b>RWC / MOCs</b> (10 Regions)	Activated	Region VI	Enhanced Watch	8:00 a.m. – 8:00 p.m. EDT	Texas Flooding
<b>RRCCs</b> (10 Regions)	Activated	Region IV	Level III	8:00 a.m. – 6:00 p.m. EDT	Hurricane Michael

Backup Regions: **VI, X and VIII**



# FEMA

**FEMA's mission is helping people before, during, and after disasters.**

Click [here](#) to subscribe to this briefing.