



FEMA

Daily Operations Briefing

Sunday, October 21, 2018

8:30 a.m. EDT

Significant Activity – Oct 20-21



FEMA

Significant Events: Central Texas Flooding

Tropical Activity:

- Atlantic – No new tropical cyclones expected during the next five days
- Eastern Pacific – Hurricane Willa (CAT1); Tropical Storm Vicente
- Central Pacific – No new tropical cyclones expected during the next five days
- Western Pacific – Invest 97W

Significant Weather:

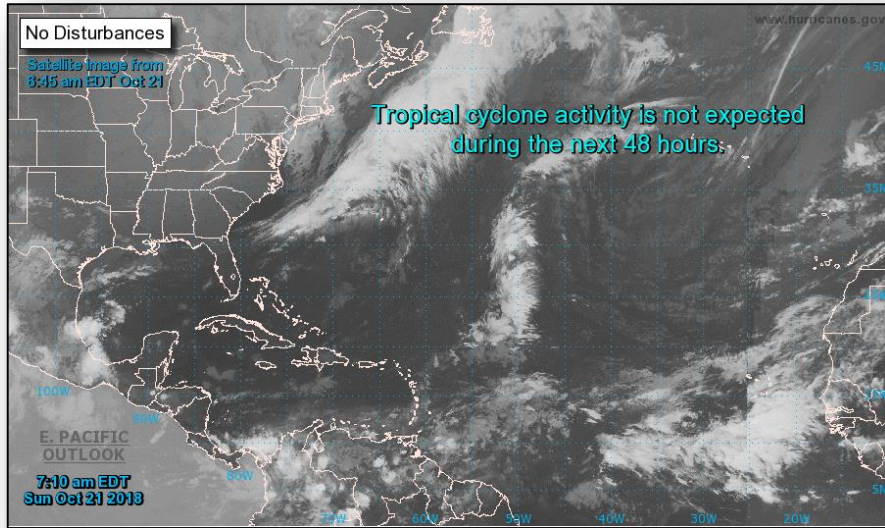
- Heavy rain and flooding possible – TX

Declaration Activity:

Tropical Outlook – Atlantic



FEMA



48 Hour Outlook



5 Day Outlook

Tropical Outlook – Eastern Pacific



Hurricane Willa (Cat1) (Advisory #5 as of 5:00 a.m. EDT)

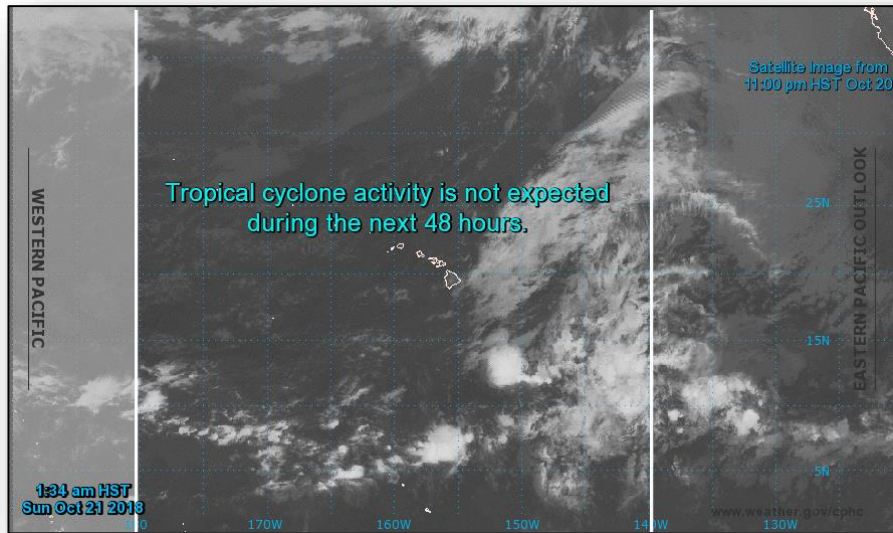
- About 240 miles SW of Manzanillo, Mexico
- Moving NW at 7 mph
- Maximum sustained winds 85 mph
- Rapid strengthening forecast; expected to becoming a major hurricane by Monday
- Tropical-storm-force winds extend out 45 miles

Tropical Storm Vicente (Advisory #8, as of 5:00 a.m. EDT)

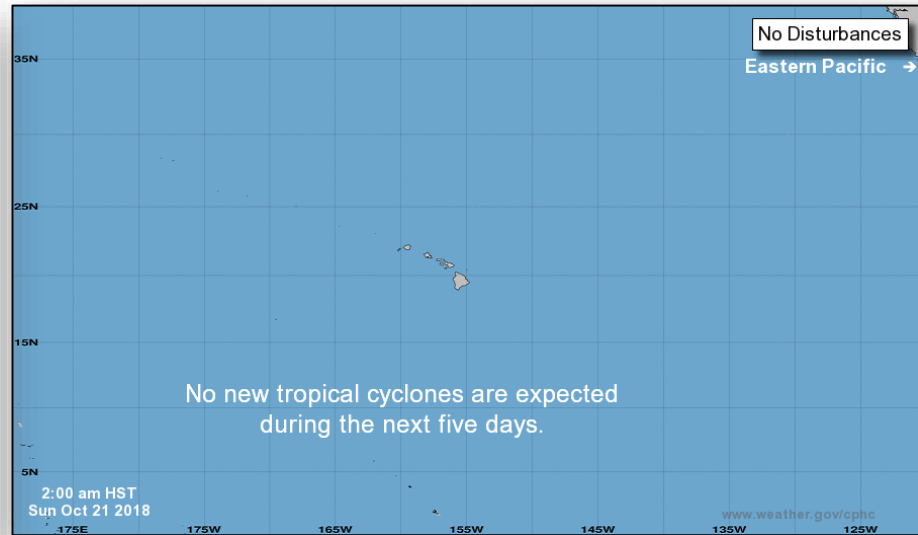
- Located 90 miles SSE of Puerto Angel, Mexico
- Moving WSW at 9 mph
- Maximum sustained winds 50 mph
- Little change is strength in next day or so
- Tropical-storm-force winds extend out 35 miles
- No coastal watches or warnings in effect



Tropical Outlook – Central Pacific



48 Hour Outlook



5 Day Outlook

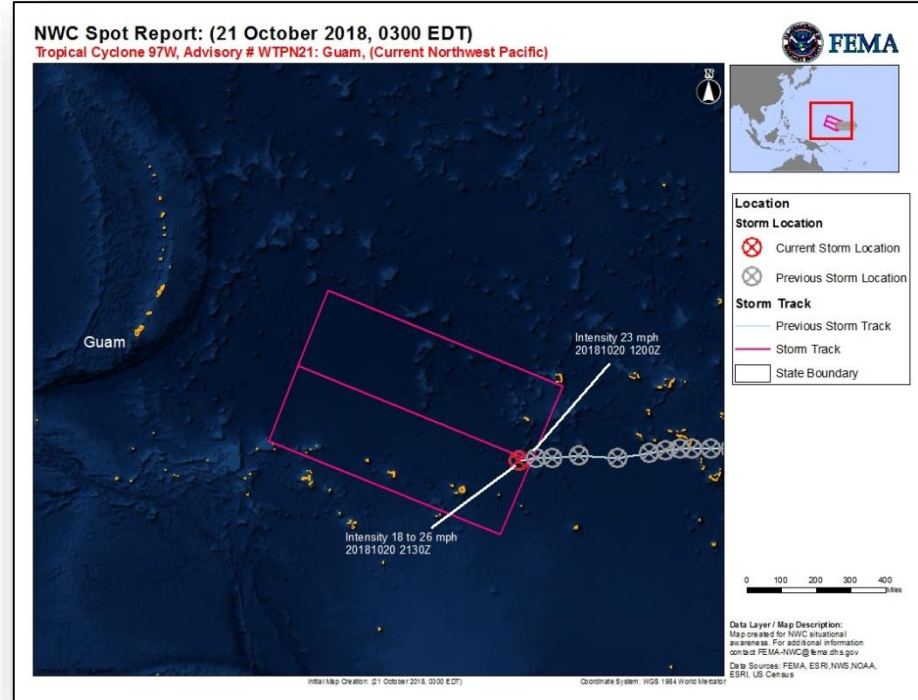
Tropical Outlook – Western Pacific



FEMA

Invest 97W (as of 5:30 p.m. EDT)

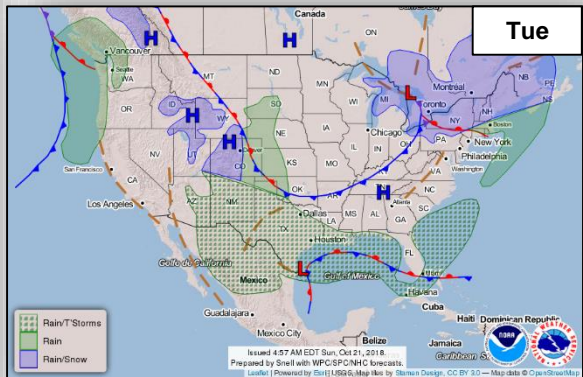
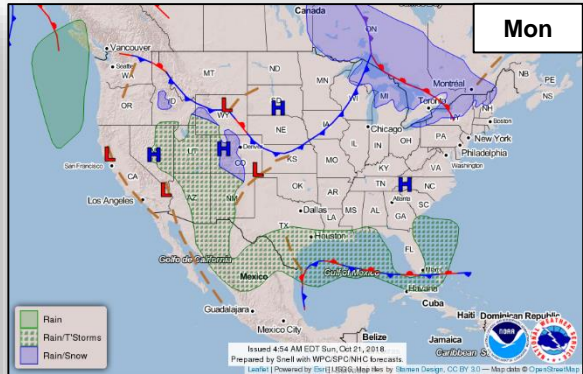
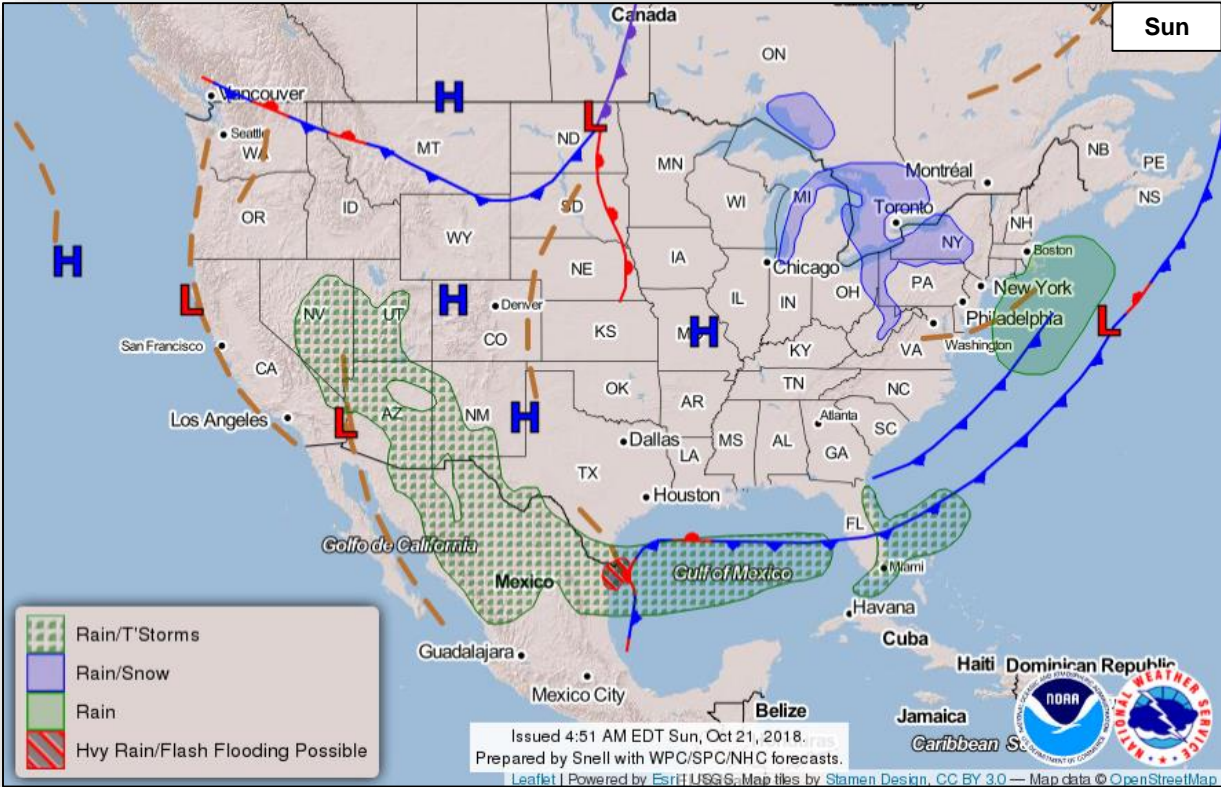
- About 1,076 miles ESE of Andersen AB, Guam
- Maximum surface winds 21 – 26 mph; Moving W at 8 mph
- Expected to intensify over next few days
- Potential for development next 24 hours: High
- FEMA Region IX IMAT-2 and LNOs deployed to Guam/CNMI
- HHS DMAT, IRCT and FEMA ISB Deployed



National Weather Forecast



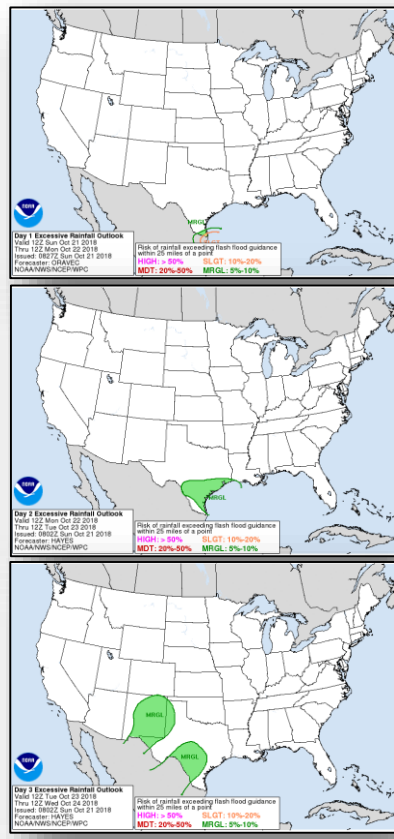
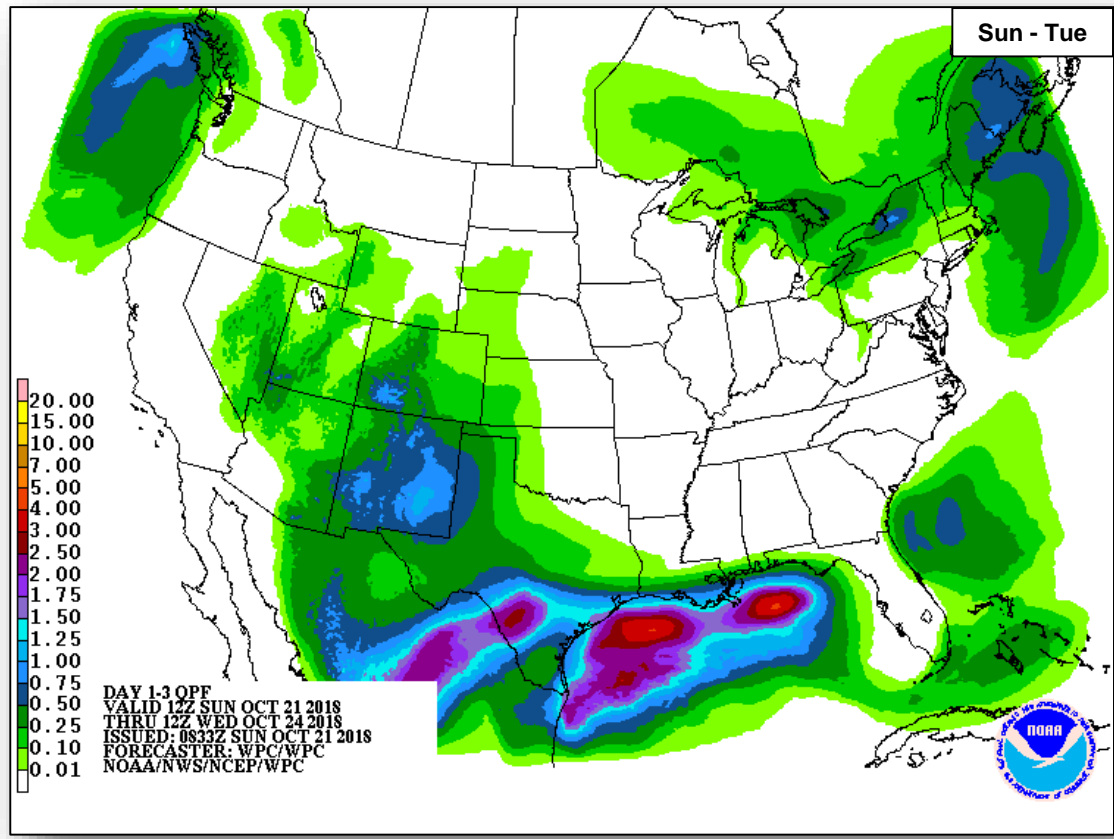
FEMA



Precipitation / Excessive Rainfall Forecast



FEMA



Sun

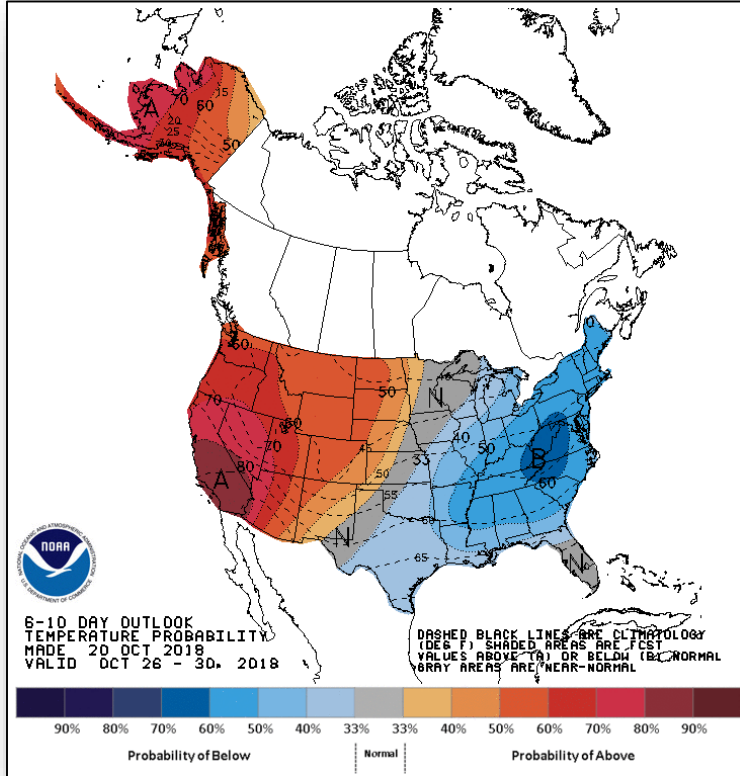
Mon

Tue

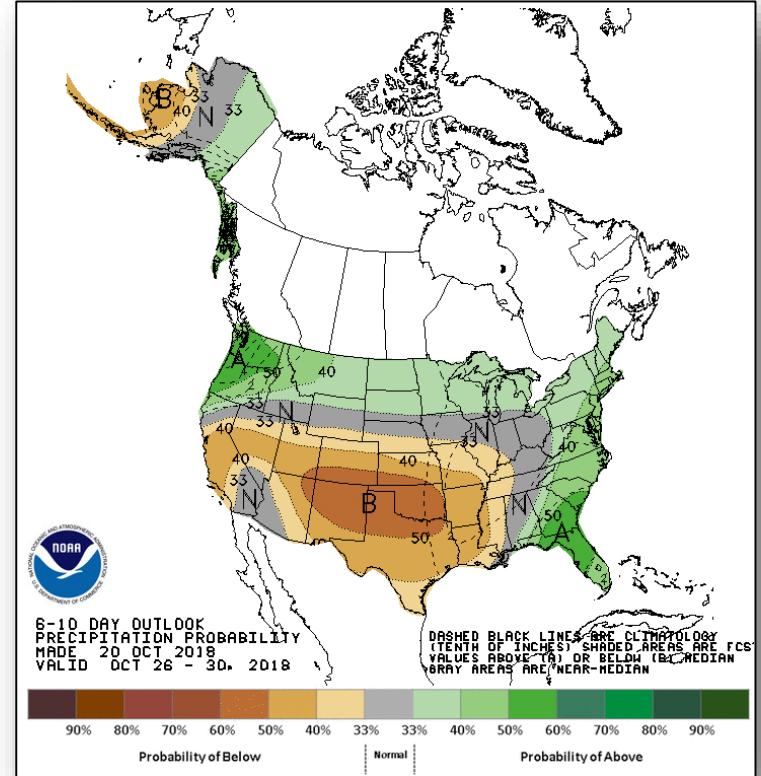
Long Range Outlooks – Oct 26-30



FEMA



6 - 10 Day Temperature Probability



6 - 10 Day Precipitation Probability

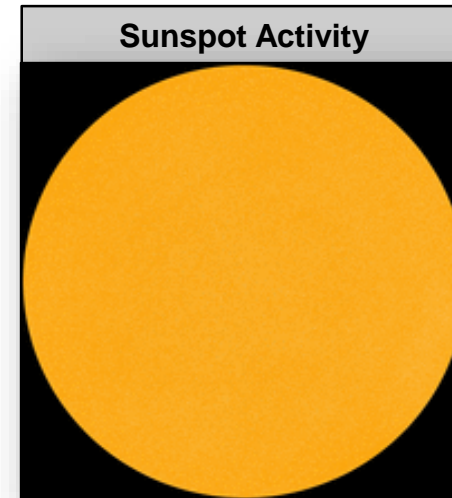
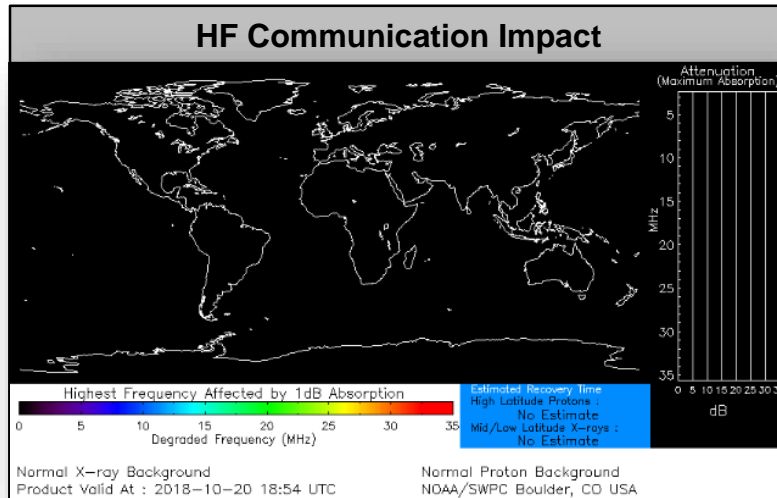
Space Weather



FEMA

	Space Weather Activity	Geomagnetic Storms	Solar Radiation	Radio Blackouts
Past 24 Hours	None	None	None	None
Next 24 Hours	None	None	None	None

For further information on NOAA Space Weather Scales refer to: <http://www.swpc.noaa.gov/noaa-scales-explanation>



Disaster Requests & Declarations



FEMA

Declaration Requests in Process					Requests APPROVED (since last report)	Requests DENIED (since last report)
1	IA	PA	HM	Date Requested	0	0
NC – DR (Appeal) Severe Storms, Flooding, Landslides, and Mudslides	X	X	X	September 19, 2018		

Joint Preliminary Damage Assessments



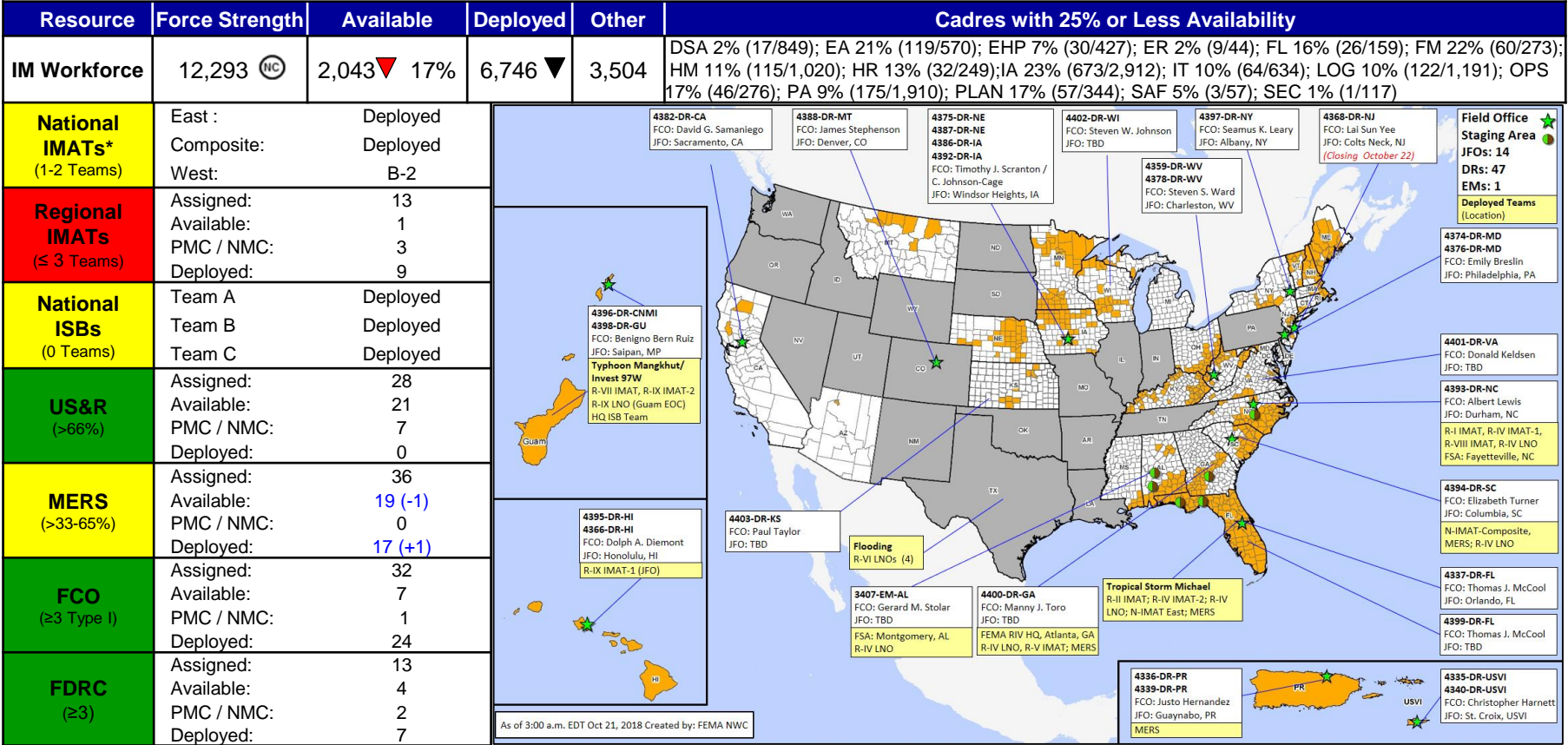
FEMA

Region	State / Location	Event	IA / PA	Number of Counties		Start – End
				Requested	Completed	
III	PA	Severe Weather August 10-15, 2018	IA	14	14	9/5 – 9/26
			PA	15	10	9/5 – TBD
IV	AL	Hurricane Michael October 8, 2018 and continuing	IA	4	0	10/23 - TBD
			PA	6	0	10/23 - TBD
IX	Tohono O'odham Nation (AZ)	Flooding September 30 – October 2, 2018	IA	1	0	10/23 – TBD
			PA	1	0	10/23 - TBD

Readiness – Deployable Teams and Assets



FEMA



* **B-2 Status:** Assemble ≤ 2-hrs, On Site ≤ 18-hrs; **B-48 Status:** Assemble and deploy ≤ 48hrs; **Charlie Status:** No team assemble time requirement

FEMA Readiness – Activation Teams



FEMA

Status		Activated Team	Activation Level	Activation Times	Reason / Comments
NWC (5 Teams)	Steady State				
NRCC (2 Teams)	Not Activated				
HLT	Activated				
RWC / MOCs (10 Regions)	Activated	Region VI	Enhanced Watch	8:00 a.m. – 8:00 p.m. EDT	Texas Flooding
RRCCs (10 Regions)	Activated	Region IV	Level III	8:00 a.m. – 6:00 p.m. EDT	Hurricane Michael

Backup Regions: VI, VIII, & X



FEMA

FEMA's mission is helping people before, during, and after disasters.

Click [here](#) to subscribe to this briefing.