



FEMA

Daily Operations Briefing

Friday, October 19, 2018

8:30 a.m. EDT

Significant Activity – Oct 18-19



FEMA

Significant Events: Tropical Storm Michael Response; Central Texas Flooding

Tropical Activity:

- Atlantic – No new tropical cyclones expected during the next five days
- Eastern Pacific – Disturbance 1 – High (80%); Disturbance 2 – Low (30%)
- Central Pacific – No new tropical cyclones expected during the next five days
- Western Pacific – No activity affecting U.S. interests

Significant Weather:

- Heavy rain and flooding possible – TX
- Red Flag Warnings and Critical Fire Weather Conditions – Southern CA

Declaration Activity:

- Major Disaster Declaration approved – Wisconsin
- Amendment No. 1 to FEMA-4401-DR-VA

Tropical Cyclone Michael - *FINAL*



FEMA

FL



State/Local Response

- FL EOC at Full Activation
- GA EOC at Full Activation
- TN and VA EOCs at Monitoring (EMAC support)

FEMA Region IV

- RRCC at Level II (7:00 a.m.- Midnight)
- LNOs deployed to FL, AL, and GA
- IMAT-2 deployed to FL EOC

FEMA HQ/Federal Response

- NRCC at Level III, day shift (select ESFs, LNOs and NRCS Gold Team)
 - [Deactivating at 1:00 p.m. EDT](#)
- National IMAT East deployed to FL EOC
- Region II IMAT deployed to FL EOC
- Region V IMAT deployed to Region IV

Safety and Security

- US&R: [All US&R Teams have demobilized and reconstituting](#)

Food, Water, Sheltering

- Shelters / Occupants: [FL: 12 / 1,537 \(+63\); GA: 3 / 255 \(+12\) \(ARC Midnight Shelter Count\)](#)
- [214 Disaster Survivor Assistance \(DSA\) staff are operational across 7 counties](#)
- [28 PODS operational across 6 counties](#)
- [USACE Blue Roof Mission installation to start Friday, October 19 in Bay County; depending on obtaining "right of entry" from homeowners. 3 Right of Entry Collection Center locations established in Panama City](#)

Health and Medical

- [All counties have at least one open pharmacy](#)
- FL: Hospitals: 4 closed, 3 partially open (ER only), 4 on generator power; Nursing homes: 7 evacuated/closed, 8 on generator power, 1 re-entry complete; [HVAC inspections continue](#); Assisted Living Facilities: 12 evacuated/closed, 11 on generator power; 2 without power

Energy:

- [Power outages:](#)
 - [FL – 107k \(-15k\) \(ESF 12 as of 9:00 p.m. EDT\)](#)
 - [Majority of remaining power outages in impacted areas require rebuild of structures or infrastructure](#)
- FL: Majority of transmission and substations expected to be reenergized by October 20
- USACE: 14 generator installs complete, 5 installs in progress, 44 assessments complete across impacted areas
- Fuel points established in Bay and surrounding counties supporting responders

Transportation

- [US 98 has re-opened](#)
- [SR 30 open \(one lane\); emergency vehicle only access](#)
- [Railroad estimated restoration for 2 suspended service CSX subdivisions and partial restoration of 3 short lines scheduled for October 19](#)

Hazardous Waste

- FL: [10 \(-4\) wastewater facilities non-operational, 26 partially operational, 7 with unknown status](#)

Central Texas Flooding



FEMA

Situation:

Heavy rain threat continues today, mainly across the Red River Valley into the Dallas-Fort Worth Metroplex and along the southern Texas coast. Continuing precipitation could prolong flooding along already impacted rivers and lead to additional Moderate to Major River Flooding throughout west-central and south Texas. Areas along the Trinity River downstream from Dallas will be rising in the coming days, affecting communities near Houston.

Safety and Security: No SAR missions currently taking place; assets staged and on standby if needed

Food, Water, Sheltering: 6 (-7) shelters / 21 (-87) Occupants (ARC Midnight Shelter Count)

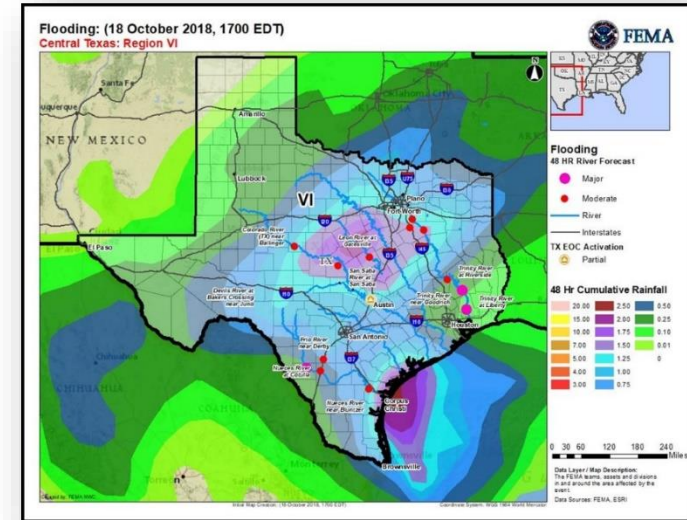
Energy: Negligible power outages reported statewide

Communication: Cell service is intermittent in the Kingsland-Llano county area

Transportation:

- All Interstate and major highways are open; 50 (-50) secondary roads are closed
- One bridge over Lake LBJ near Kingsland was destroyed, detours available

Hazardous Waste: Kingsland and Marble Falls are reporting waste water lift stations are under water; emergency restriction-limited use until further notice



State/Local Response:

- TX EOC at Partial Activation
- The Governor declared a State of Emergency

FEMA Response:

- Region VI RWC at Enhanced Watch (day shift)
- 6 PA PDA and 4 IA PDA teams on standby
- 4 LNOs deployed to TX EOC
- FEMA HQ NWC continues to monitor
- No requests for FEMA assistance; no unmet needs

Tropical Outlook – Atlantic



FEMA



48 Hour Outlook



5 Day Outlook

Tropical Outlook – Eastern Pacific

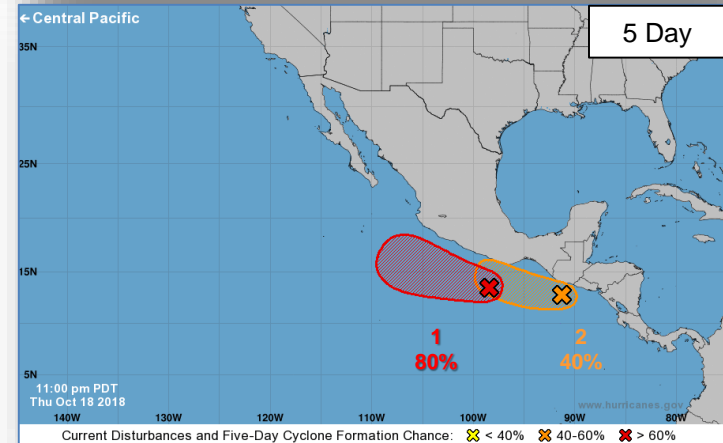
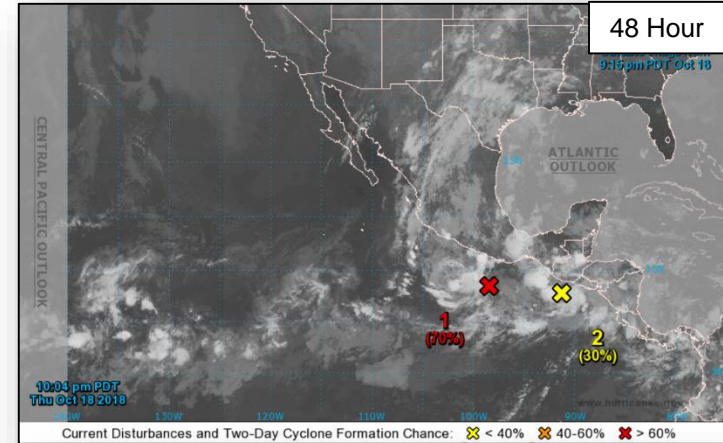


Disturbance 1 (as of 2:00 a.m. EDT)

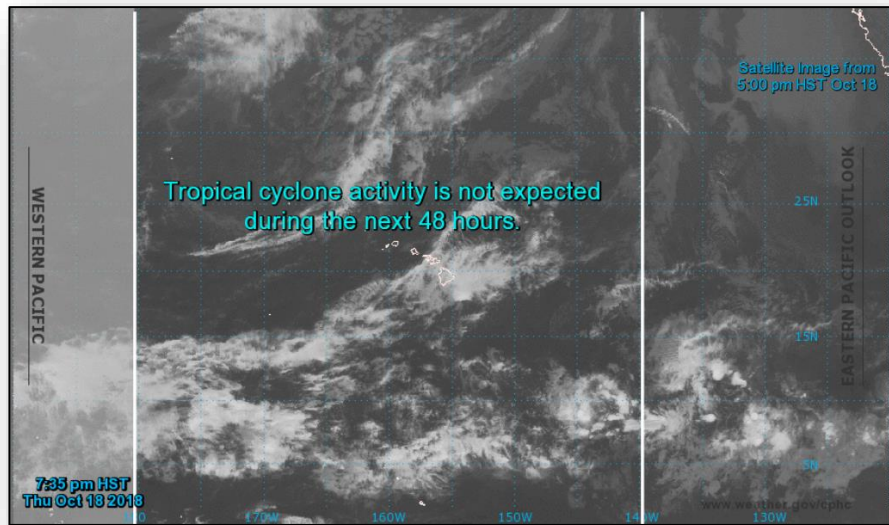
- Located a couple of hundred miles south of the southern coast of Mexico
- Moving WNW at 10-15 mph
- A tropical depression likely to form over the weekend or early next week
- Formation chance next 48 hours – High (70%)
- Formation chance next 5 days – High (80%)

Disturbance 2 (as of 2:00 a.m. EDT)

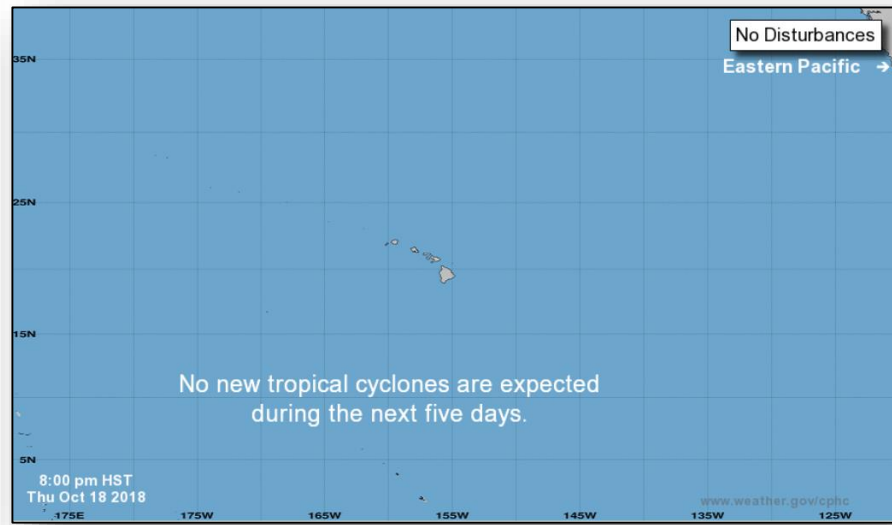
- Located just south of Guatemala
- A tropical depression could form during the next few days
- Formation chance next 48 hours – Low (30%)
- Formation chance next 5 days – Medium (40%)



Tropical Outlook – Central Pacific



48 Hour Outlook

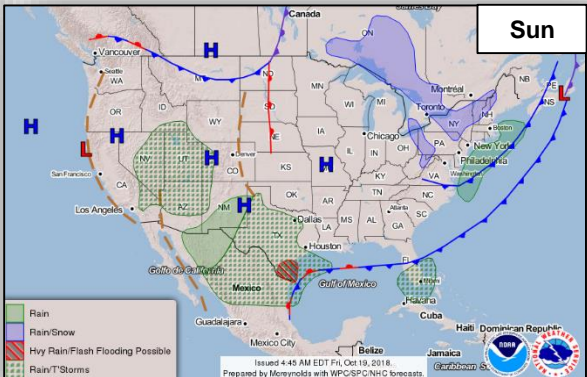
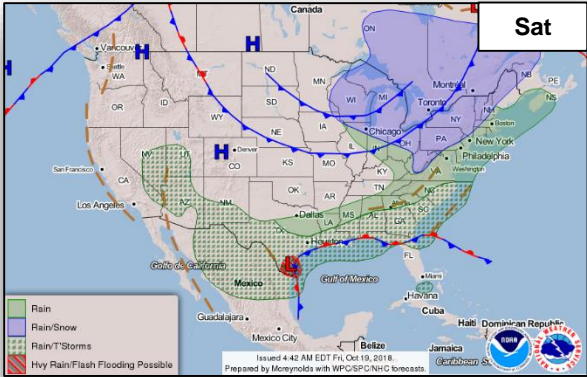
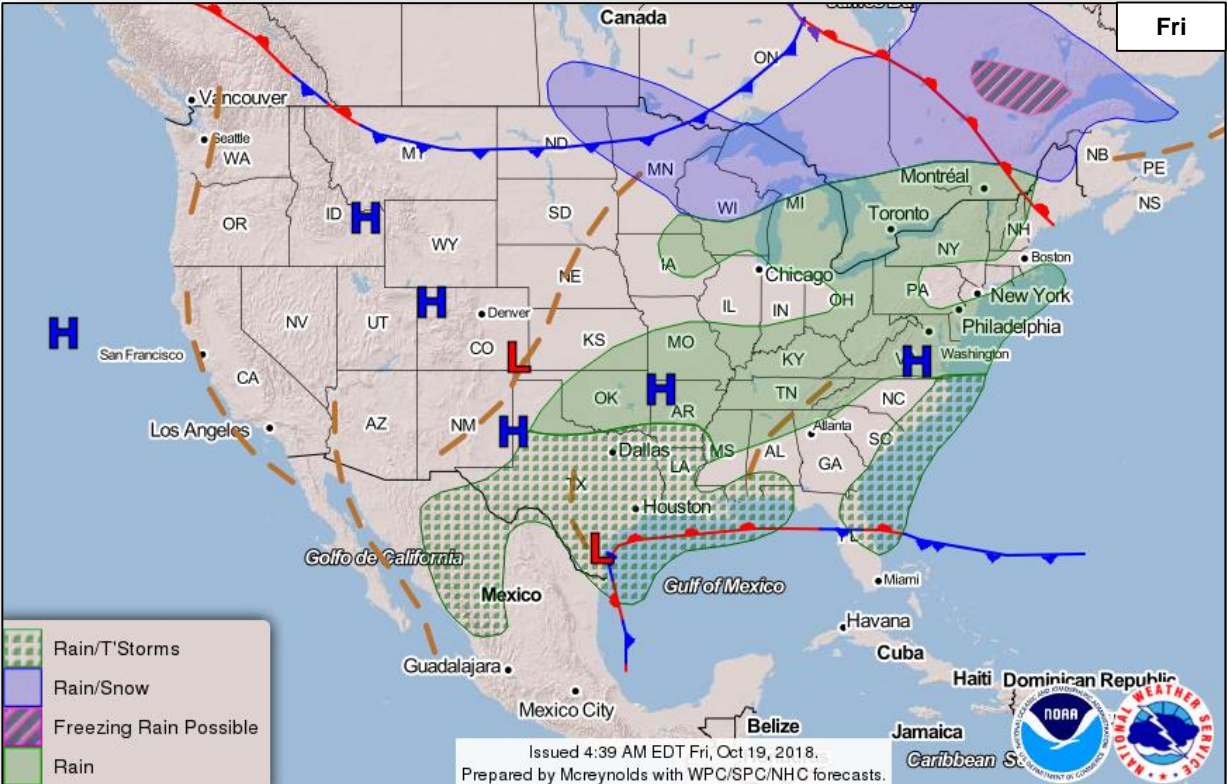


5 Day Outlook

National Weather Forecast



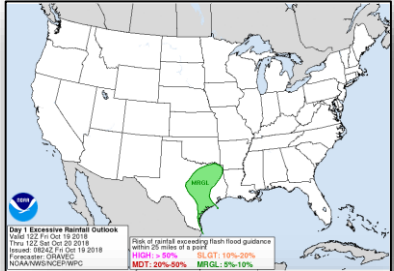
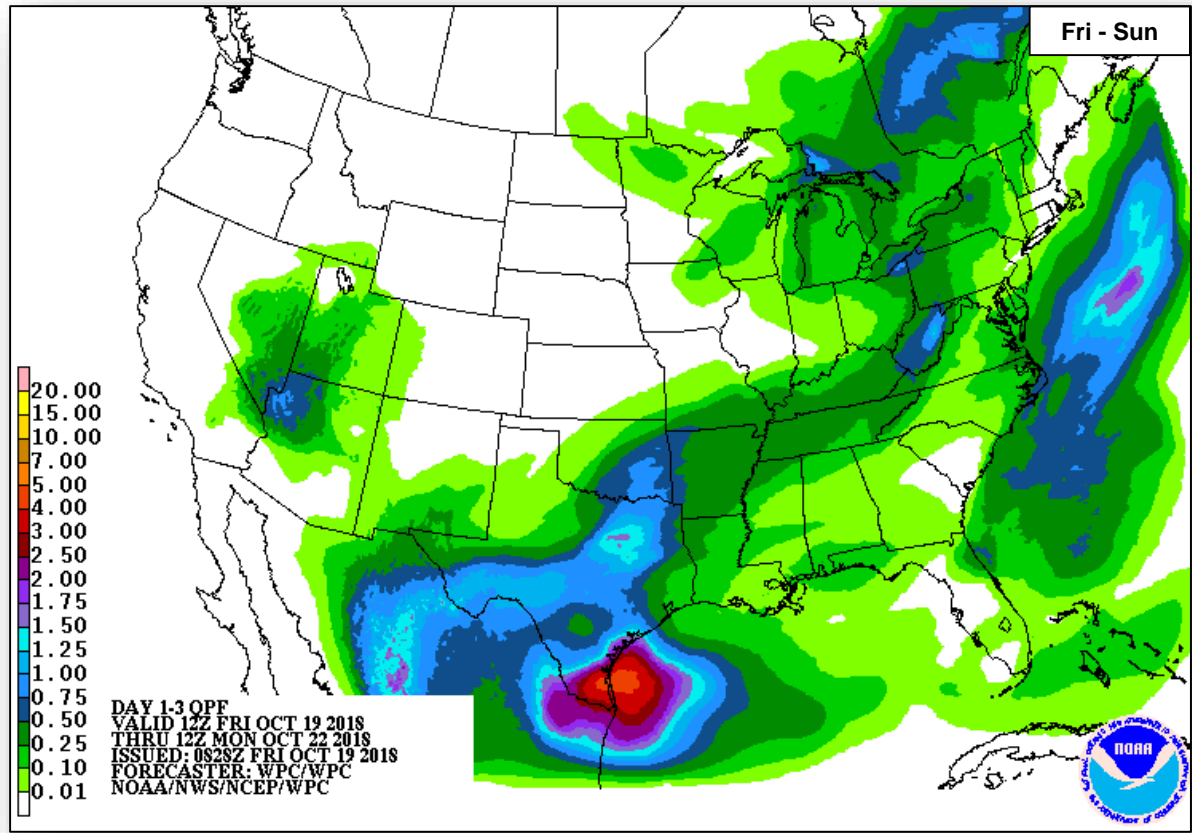
FEMA



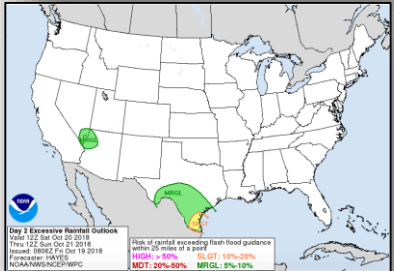
Precipitation / Excessive Rainfall Forecast



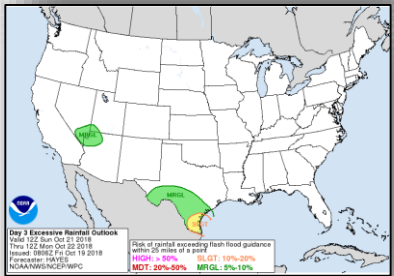
FEMA



Fri



Sat

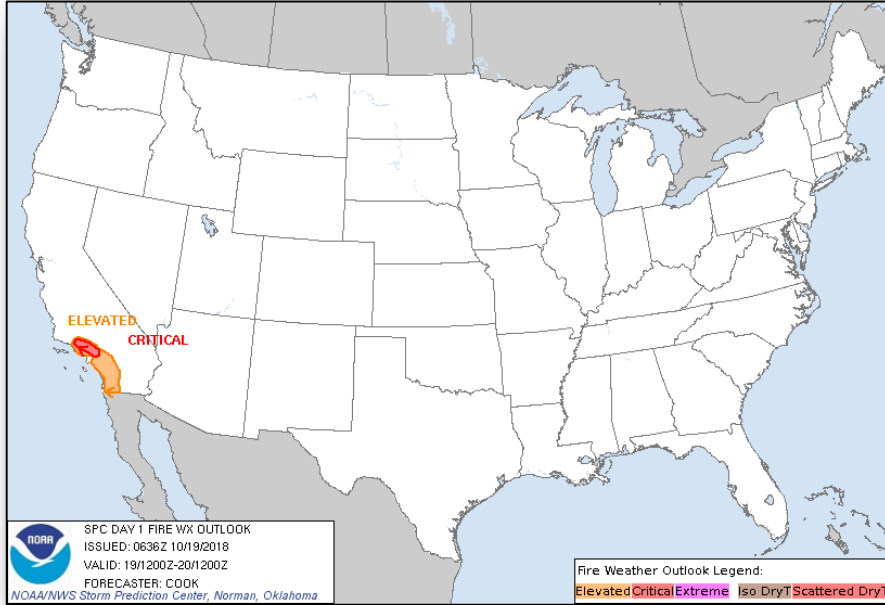


Sun

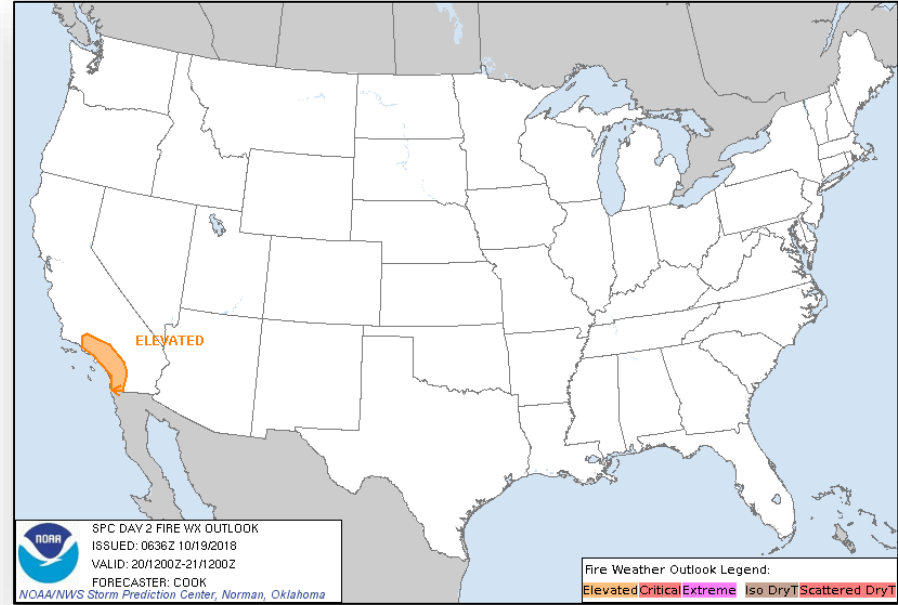
Fire Weather Outlook



FEMA



Friday

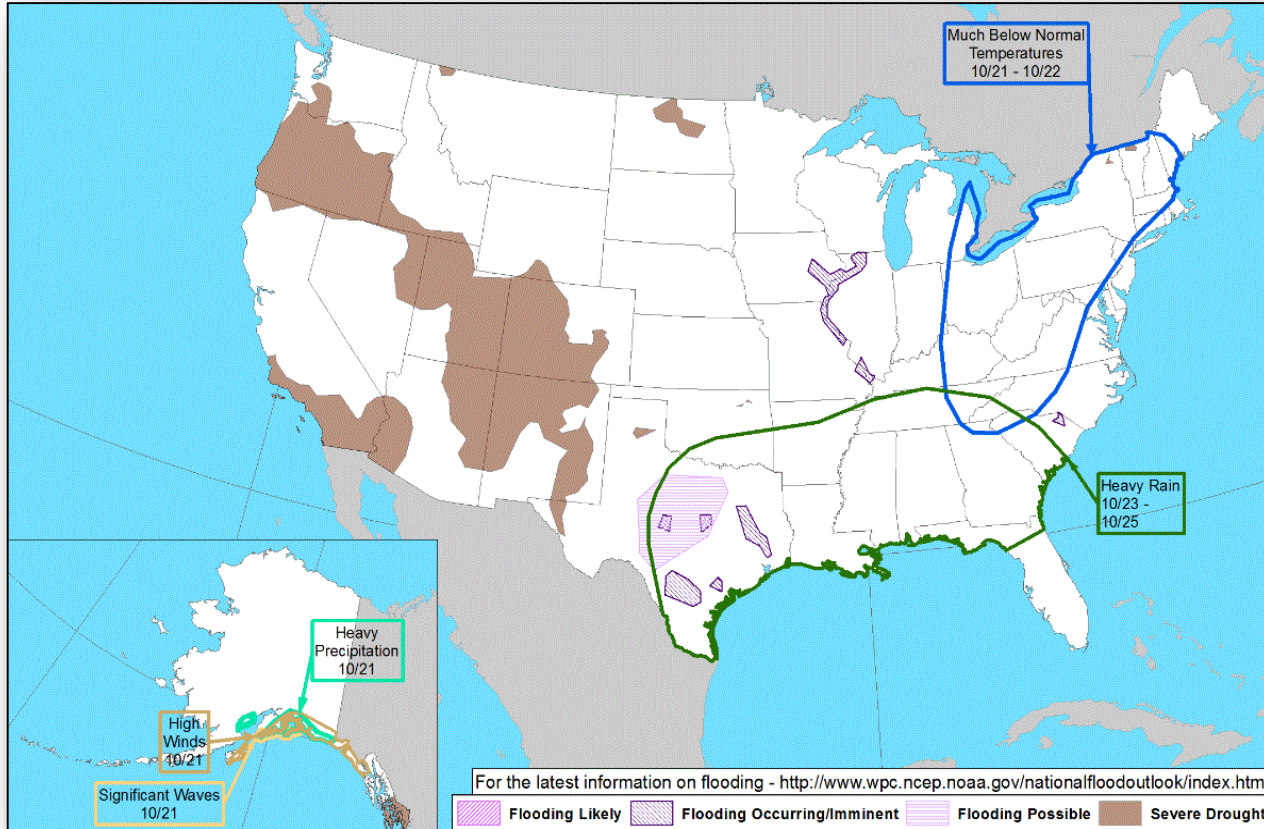


Saturday

Hazards Outlook – Oct 21-25



FEMA



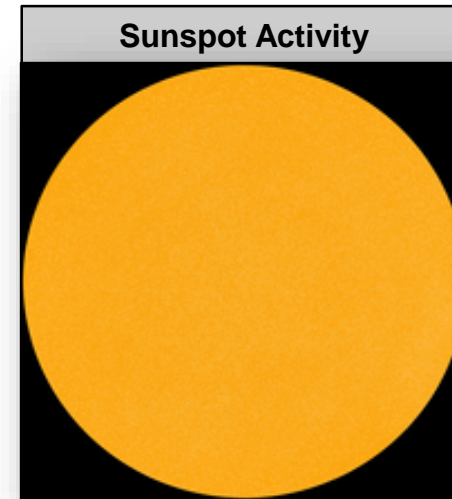
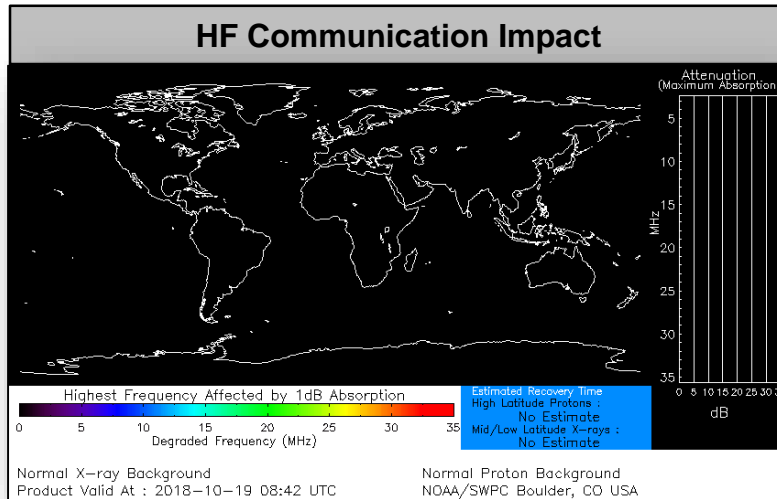
Space Weather



FEMA

	Space Weather Activity	Geomagnetic Storms	Solar Radiation	Radio Blackouts
Past 24 Hours	None	None	None	None
Next 24 Hours	Minor	G1	None	None

For further information on NOAA Space Weather Scales refer to: <http://www.swpc.noaa.gov/noaa-scales-explanation>



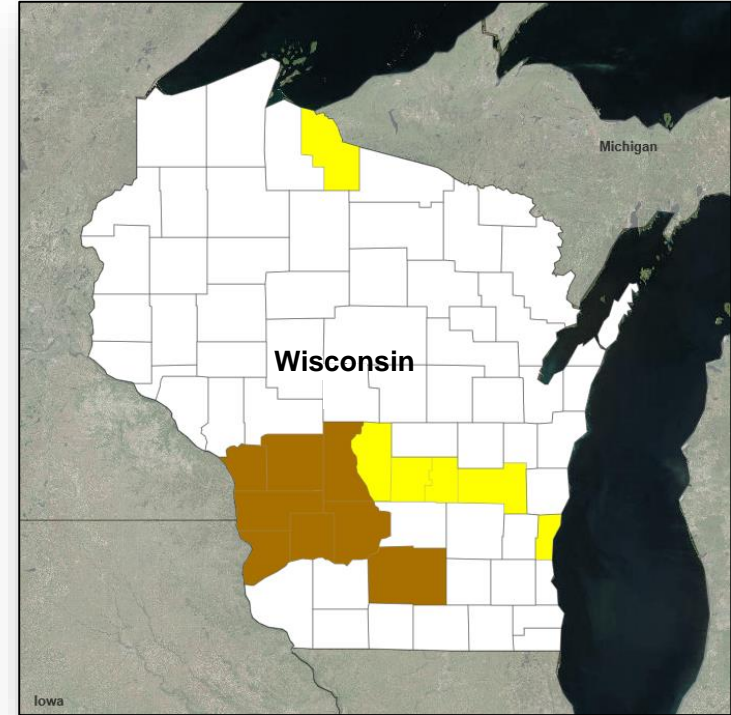
Declaration Approved




FEMA

FEMA-4402-DR-WI

- The President approved a Major Disaster Declaration on October 18, 2018 for the State of Wisconsin
- For Severe Storms, Flooding, Landslides, Straight-line Winds, and Tornadoes, that occurred August 17 – September 14, 2018
- Provides:
 - Individual Assistance and Public Assistance for eight counties
 - Public Assistance only for six counties
 - Hazard Mitigation statewide
- FCO is Steven W. Johnson



 IA & PA

 PA Only

Disaster Requests & Declarations



FEMA

Declaration Requests in Process					Requests APPROVED (since last report)	Requests DENIED (since last report)
2	IA	PA	HM	Date Requested	1	0
NC – DR (Appeal) Severe Storms, Flooding, Landslides, and Mudslides	X	X	X	September 19		
KS – DR Severe Storms, Straight-line Winds, and Flooding		X	X	September 25		
WI – DR Severe Storms, Tornadoes, Straight-line Winds, Flooding, and Landslides	X	X	X	October 4	Declared October 18, 2018	

Disaster Amendments



FEMA

Amendment	Date Issued	Action
Amendment No. 1 to FEMA-4401-DR-VA	October 18, 2018	Adds 4 counties and an independent city for PA

Readiness – Deployable Teams and Assets



FEMA

Resource	Force Strength	Available	Deployed	Other	Cadres with 25% or Less Availability
IM Workforce	12,297 ▲	2,150 ▲ 17%	6,654 ▲	3,493	DSA 2% (13/848); EA 17% (99/568); EHP 6% (26/427); ER 0% (0/44); FL 18% (28/159); FM 22% (60/273); HM 15% (139/1,023); HR 15% (36/249); IT 11% (70/633); LOG 10% (116/1,192); OPS 17% (48/276); PA 10% (198/1,913); PLAN 17% (59/343); SAF 5% (3/57); SEC 3% (4/117)
National IMATs* (1-2 Teams)	East : Composite: West:	Deployed Deployed B-2			
Regional IMATs (≤ 3 Teams)	Assigned: Available: PMC / NMC: Deployed:	13 1 3 9			
National ISBs (0 Teams)	Team A Team B Team C	Deployed Deployed Deployed			
US&R (>33-65%)	Assigned: Available: PMC / NMC: Deployed:	28 16 12 (+4) 0 (-4)			
MERS (>33-65%)	Assigned: Available: PMC / NMC: Deployed:	36 19 (-1) 0 17 (+1)			
FCO (≥3 Type I)	Assigned: Available: PMC / NMC: Deployed:	32 7 (-2) 1 24 (+2)			
FDRC (≥3)	Assigned: Available: PMC / NMC: Deployed:	13 4 2 7			

As of 3:00 a.m. EDT Oct 19, 2018 Created by: FEMA NWC

* **B-2 Status:** Assemble ≤ 2-hrs, On Site ≤ 18-hrs; **B-48 Status:** Assemble and deploy ≤ 48hrs; **Charlie Status:** No team assemble time requirement

FEMA Readiness – Activation Teams



FEMA

Status		Activated Team	Activation Level	Activation Times	Reason / Comments
NWC (5 Teams)	Steady State				
NRCC (2 Teams)	Activated	Gold	Level III	Day shift	Hurricane Michael Deactivating at 1:00 p.m. EDT
HLT	Activated				
RWC / MOCs (10 Regions)	Activated	Region VI	Enhanced Watch	8:00 a.m. – 8:00 p.m., EDT	Texas Flooding
RRCCs (10 Regions)	Activated	Region IV	Level II	7:00 a.m. – Midnight, EDT	Hurricane Michael

Backup Regions: VI, VIII, & X



FEMA

FEMA's mission is helping people before, during, and after disasters.

Click [here](#) to subscribe to this briefing.