



# **FEMA**

## **Daily Operations Briefing**

**Tuesday, October 16, 2018**

**8:30 a.m. EDT**

# Significant Activity – Oct 15-16



FEMA

**Significant Events:** Tropical Storm Michael Response

**Tropical Activity:**

- Atlantic – Disturbance 1 – Medium (40%)
- Eastern Pacific – Tropical Storm Tara; Disturbance 1 – Low (90%); Disturbance 2 – High (20%)
- Central Pacific – No new tropical cyclones are expected during the next five days
- Western Pacific – No activity affecting U.S. interests

**Significant Weather:**

- Severe thunderstorms, heavy rain, and flash flooding possible for portions of the Southern Plains and Lower Mississippi Valley
- Red Flag Warnings – CA & OR
- Critical Fire Weather conditions - CA

**Declaration Activity:**

- Major Disaster Declaration approved – Virginia (Hurricane Florence)

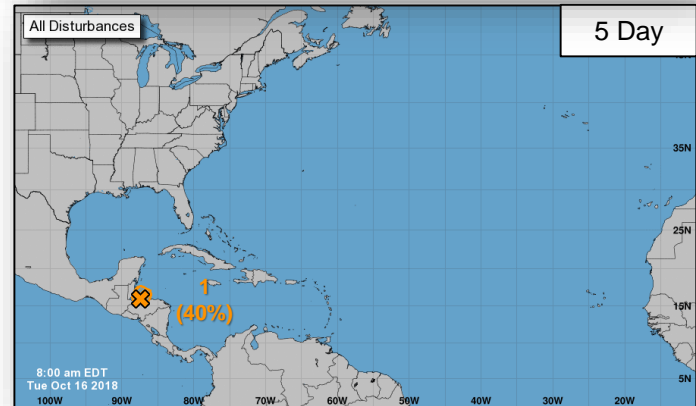
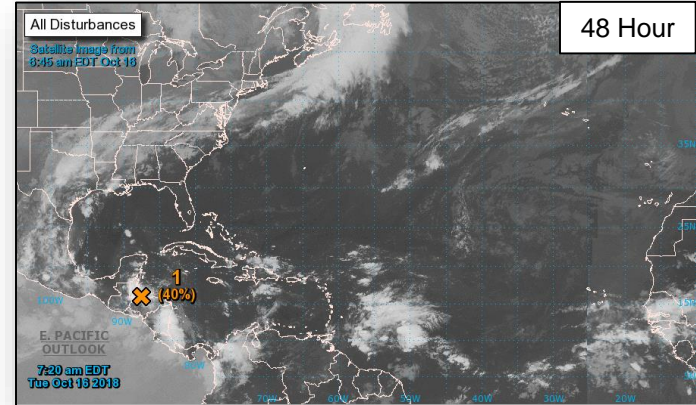
# Tropical Outlook – Atlantic



FEMA

## Disturbance 1 (as of 8:00 a.m. EDT)

- Located offshore of N central coast of Honduras
- A tropical depression could form before it moves inland over Belize today
- Formation chance through 48 hours: Medium (40%)
- Formation chance through 5 days: Medium (40%)



# Tropical Outlook – Eastern Pacific



## Tropical Storm Tara (Advisory #8A as of 8:00 a.m. EDT)

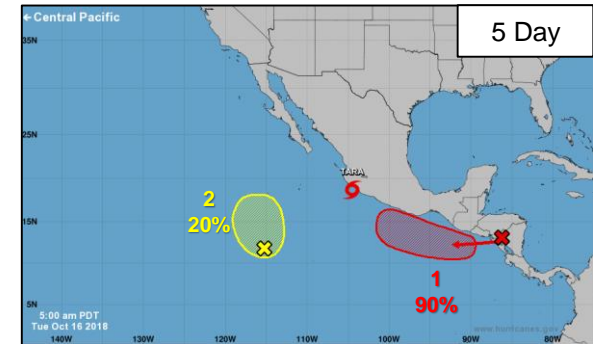
- Located 25 miles SSW of Manzanillo, Mexico
- Maximum sustained winds 60 mph
- Moving NNW near 2 mph
- Gradual weakening is expected
- Tropical storm force winds extend 25 miles

## Disturbance 1 (As of 8:00 a.m. EDT)

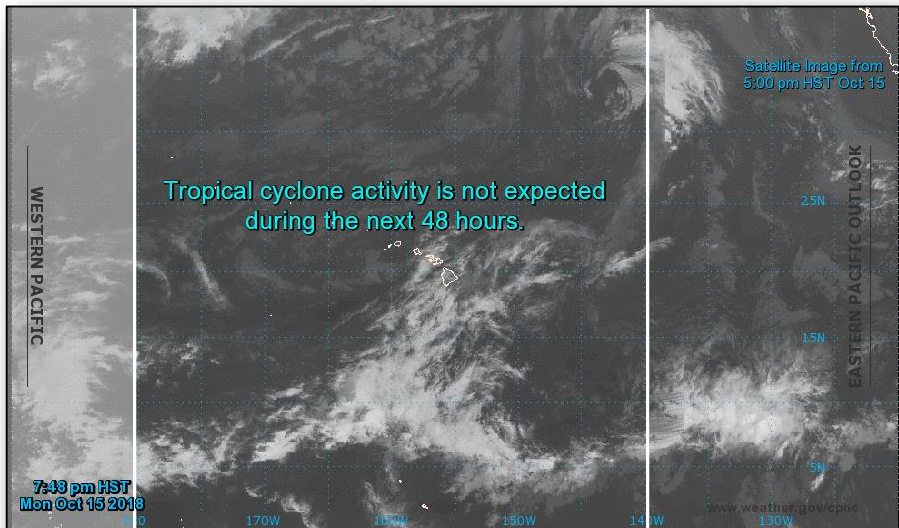
- Located couple hundred miles S of Guatemala
- Development of tropical depression by the end of the week
- Formation chance next 48 hours – Medium (40%)
- Formation chance next 5 days – High (90%)

## Disturbance 2 (As of 8:00 a.m. EDT)

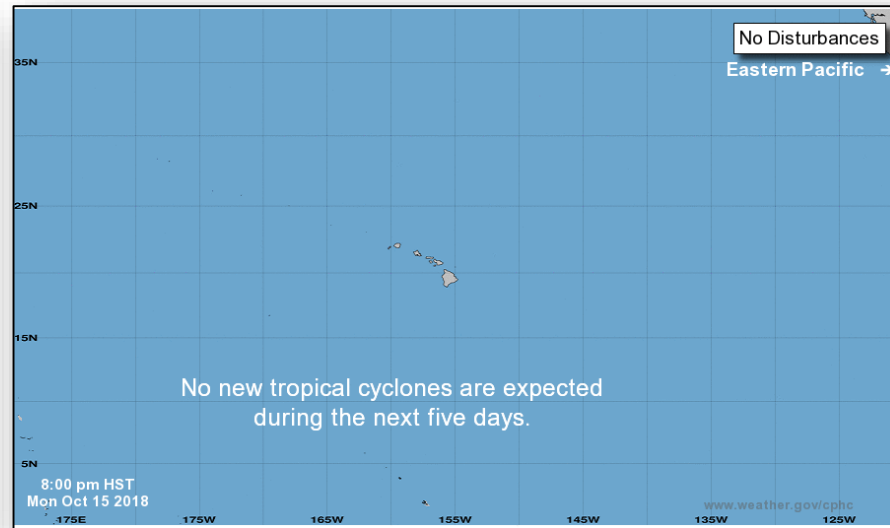
- Located 850 miles SSW of Baja California
- Some slow development is possible
- Formation chance next 48 hours – Low (10%)
- Formation chance next 5 days – Low (20%)



# Tropical Outlook – Central Pacific



**48 Hour Outlook**



**5 Day Outlook**

# Tropical Cyclone Michael



FEMA

## State/Local Response

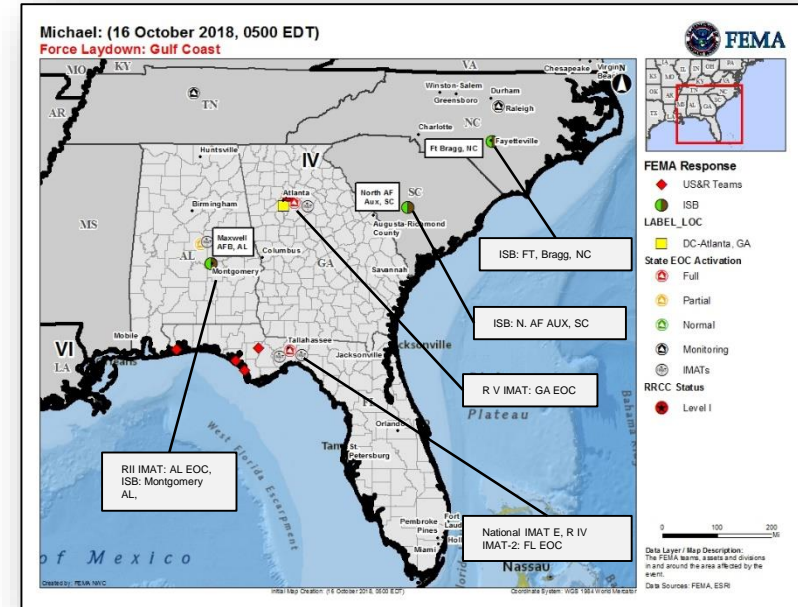
- AL EOC at Partial Activation:
  - Emergency Declaration FEMA-3407-EM approved on October 12
- FL EOC at Full Activation:
  - Emergency Declaration FEMA-3405-EM-FL approved October 9
  - Expedited Major Disaster Declaration FEMA-4399-DR-FL approved October 11
- GA EOC at Full Activation:
  - Emergency Declaration FEMA-3406-EM-GA approved on October 10
  - Expedited Major Disaster Declaration FEMA-4400-DR-GA approved October 14
- NC EOC at Monitoring
- TN EOC at Monitoring (EMAC support)

## FEMA Region IV

- **RRCC at Level I, day shift only**
- **RWC at Enhanced Watch, night shift only**
- LNOs deployed to FL, AL and GA
- IMAT-2 deployed to FL EOC

## FEMA HQ/Federal Response

- **NRCC at Level II, day shift only; Response Operations Cell (ROC) night shift only (ESFs on standby)**
- National IMAT East deployed to FL EOC
- Region II IMAT deployed to AL EOC
- Region V IMAT deployed to GA EOC



# Tropical Cyclone Michael



## Safety and Security

- US&R:
  - Pensacola, FL: Red IST, IST cache, FSARCG
  - Mexico Beach, Panama City, & Calhoun County, FL – 4 NIMS type 1 and 6 MRP – Water Rescue Teams are conducting ground based wide area search operations
  - 14 Human Remains (HR) dog teams in FL with Type I US&R

## Food, Water, Sheltering

- Evacuations: FL: 1 (-2) county under voluntary evacuations
- Shelters / Occupants: FL: 19 / 1,400 (-232); GA: 3 / 164 (ESF 6 as of 12:41 pm EDT)
- FL: 42 active boil water advisories; 53 water utilities partially operational, 75 non-operational, 121 with unknown status
- GA: 34 (-30) active boil water advisories; 34 water utilities partially operational; 76 non-operational

## Health and Medical

- FL: Hospitals: 4 closed in 3 counties, 3 partially open (ER only), 4 on full generator power, 3 on partial generator power; 2 dialysis centers closed; Nursing Homes: 7 (-15) evacuated and closed, 8 (-9) on generator power, 1 re-entry complete, Assisted Living Facilities: 15 evacuated/closed, 9 on full generator power, 8 on partial generator power, 1 re-entry in progress
  - 1 confirmed fatality
- GA: Hospitals: 2 on generator power; Nursing homes: 4 on generator power
  - 3 (+1) confirmed fatalities

## Energy:

- Power outages: FL – 146k (-23k); GA – 83k (-22k); (ESF 12 as of 2:00 a.m. EDT, Oct 16)
- Most customers in the less hard-hit areas will be restored by October 16; nearly 95% of all customers affected by Michael expected to be restored by October 19

## Region IV



## Transportation

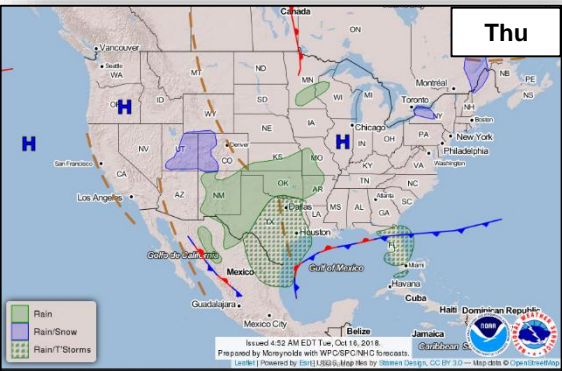
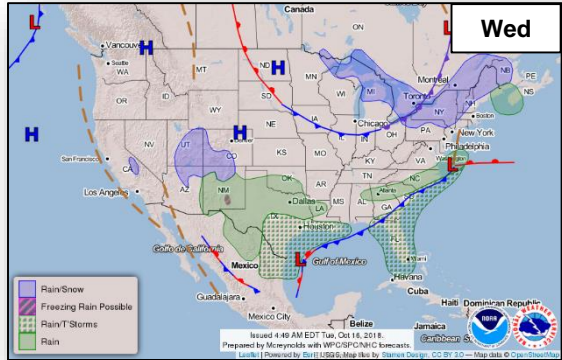
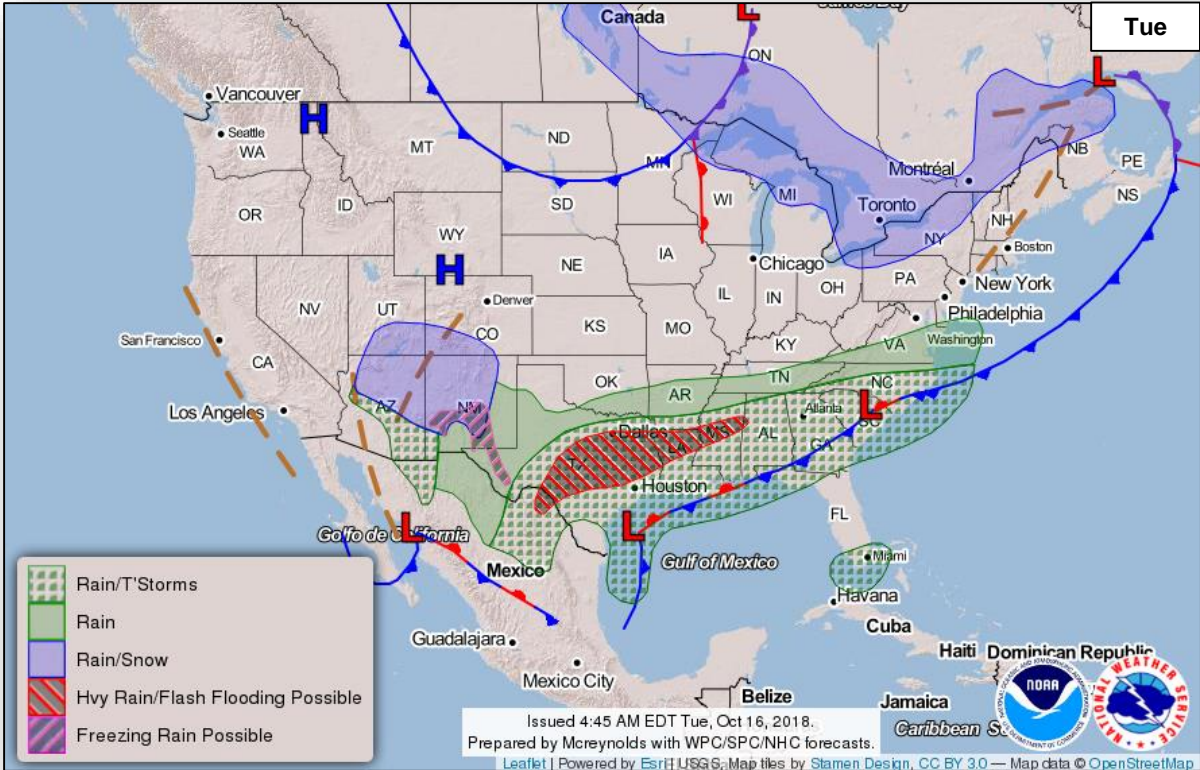
- Roads / Highways:
  - FL: 60 road closures, portions of US-98 remain closed, 4 bridges require repair
  - GA: All interstates and National Highway System routes and bridges open; 21 road closures
- Port Conditions:
  - Panama City & Gulf Intracoastal waterway open with restrictions
- Railway
  - FL: Partial restoration for Bay Line Apalachicola Northern and Conrad Yelvington Industries railroads expected by October 19
  - AL: CSX Corporation rail service remains suspended from southeast AL to Thomasville, GA due to debris on tracks
- Hazardous Waste
  - FL: 16 (-2) wastewater facilities are non-operational, 28 (+2) partially operational, 24 (-1) with unknown status; of 18 chemical facilities, 12 (-4) are operational and 3 (-1) are shut down
  - GA: 9 wastewater facilities are non-operational; 23 are partially operational; 98 with unknown status; of 15 chemical facilities, 12 are operational and 3 are shut down



# National Weather Forecast



FEMA

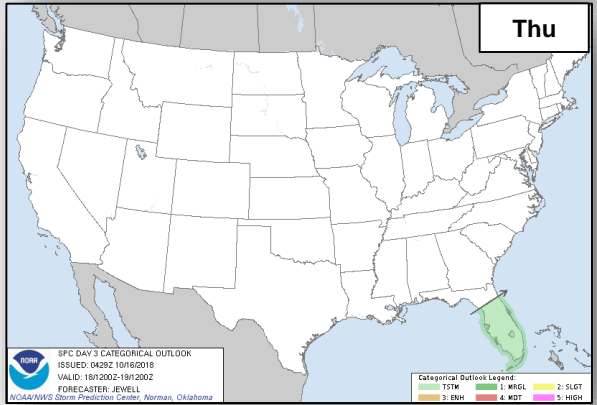
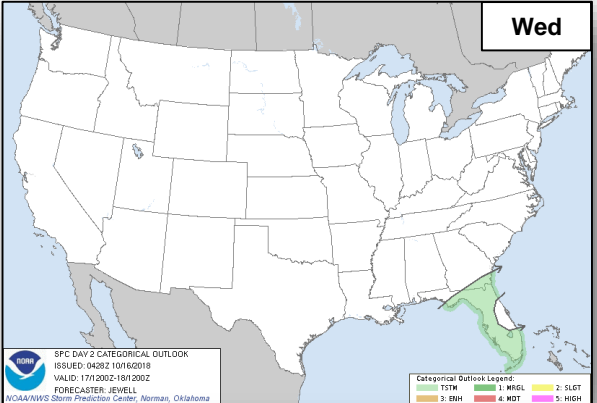
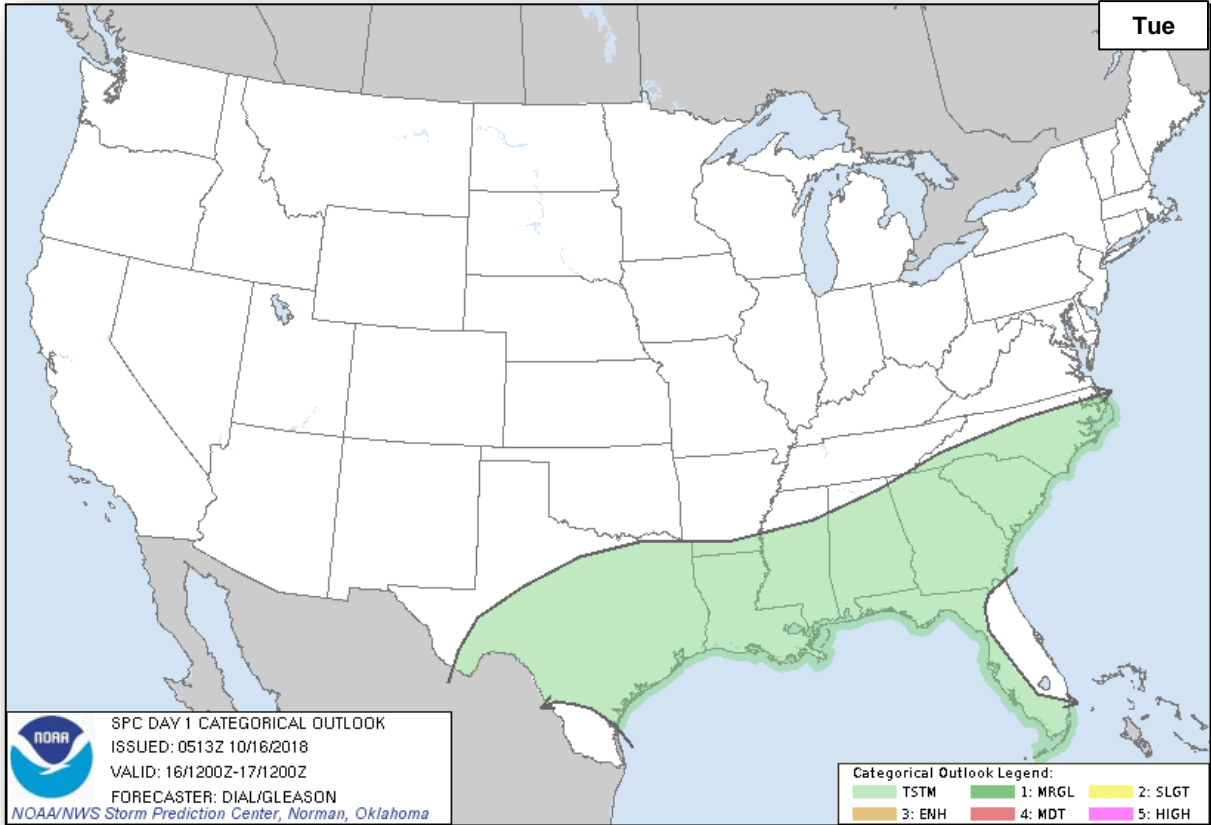




# Severe Weather Outlook



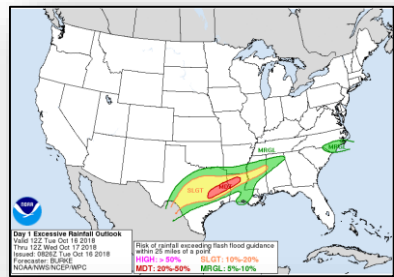
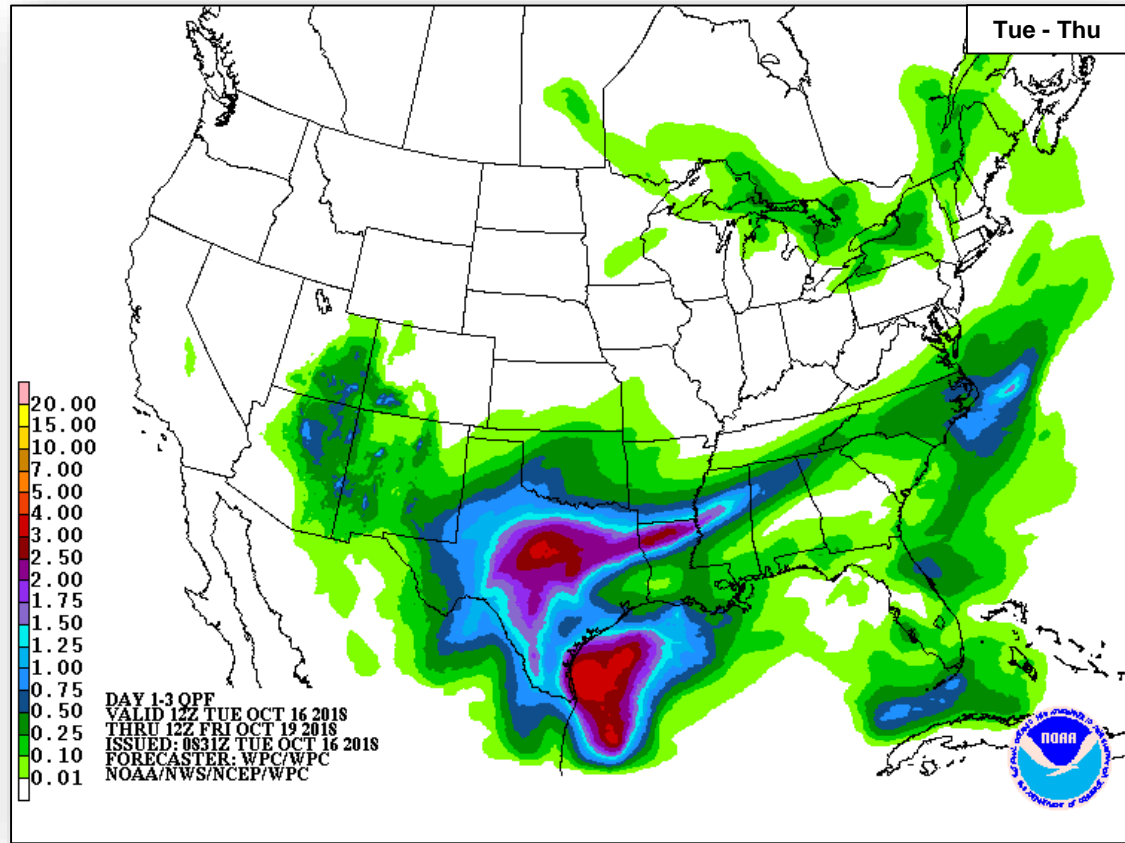
FEMA



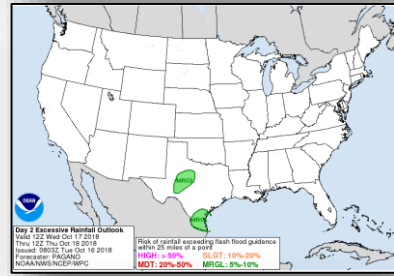
# Precipitation / Excessive Rainfall Forecast



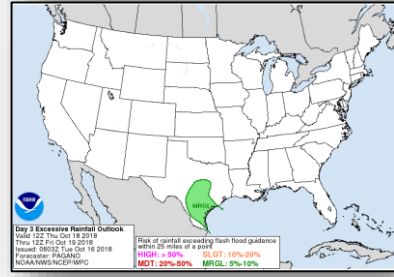
FEMA



Tue



Wed

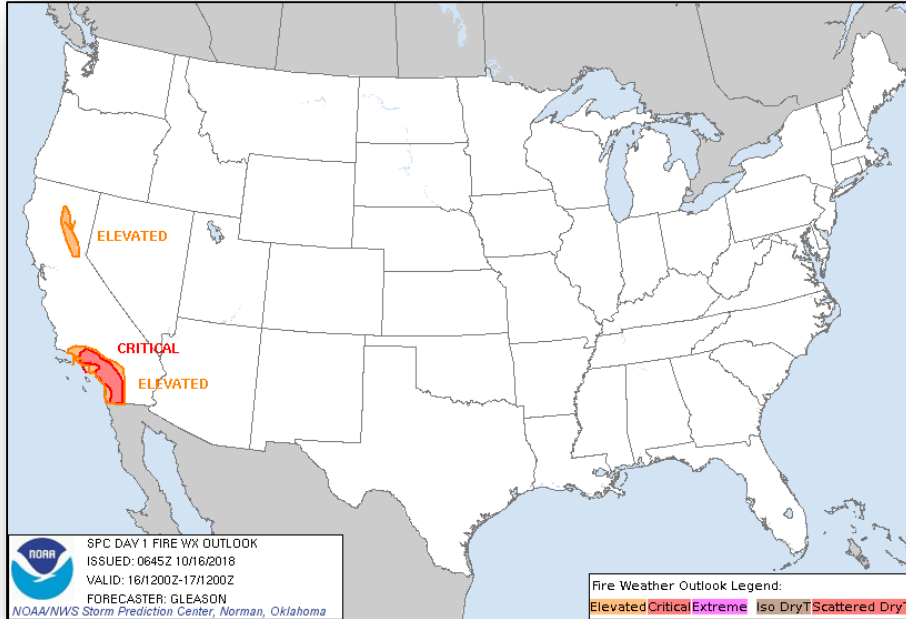


Thu

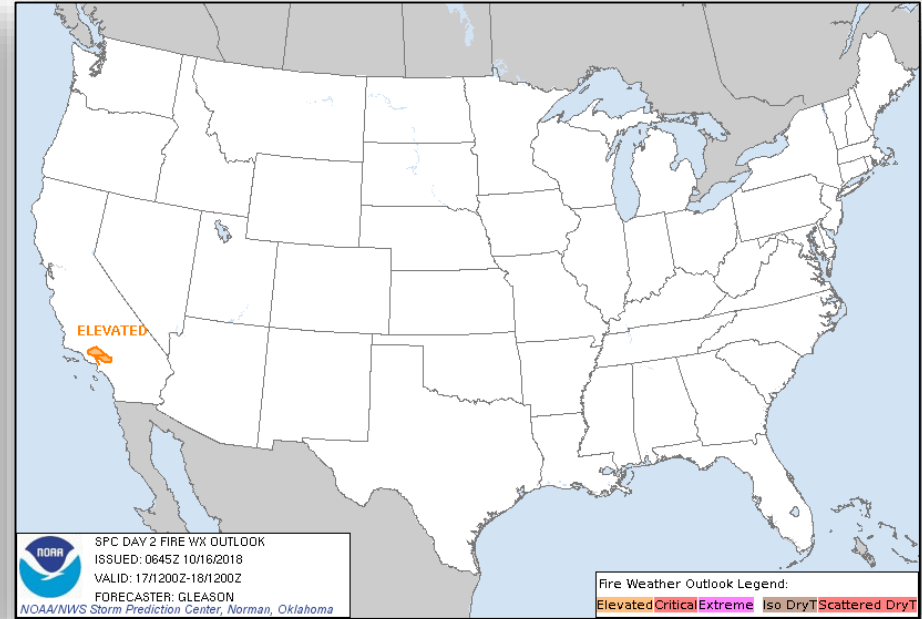
# Fire Weather Outlook



FEMA



**Tuesday**

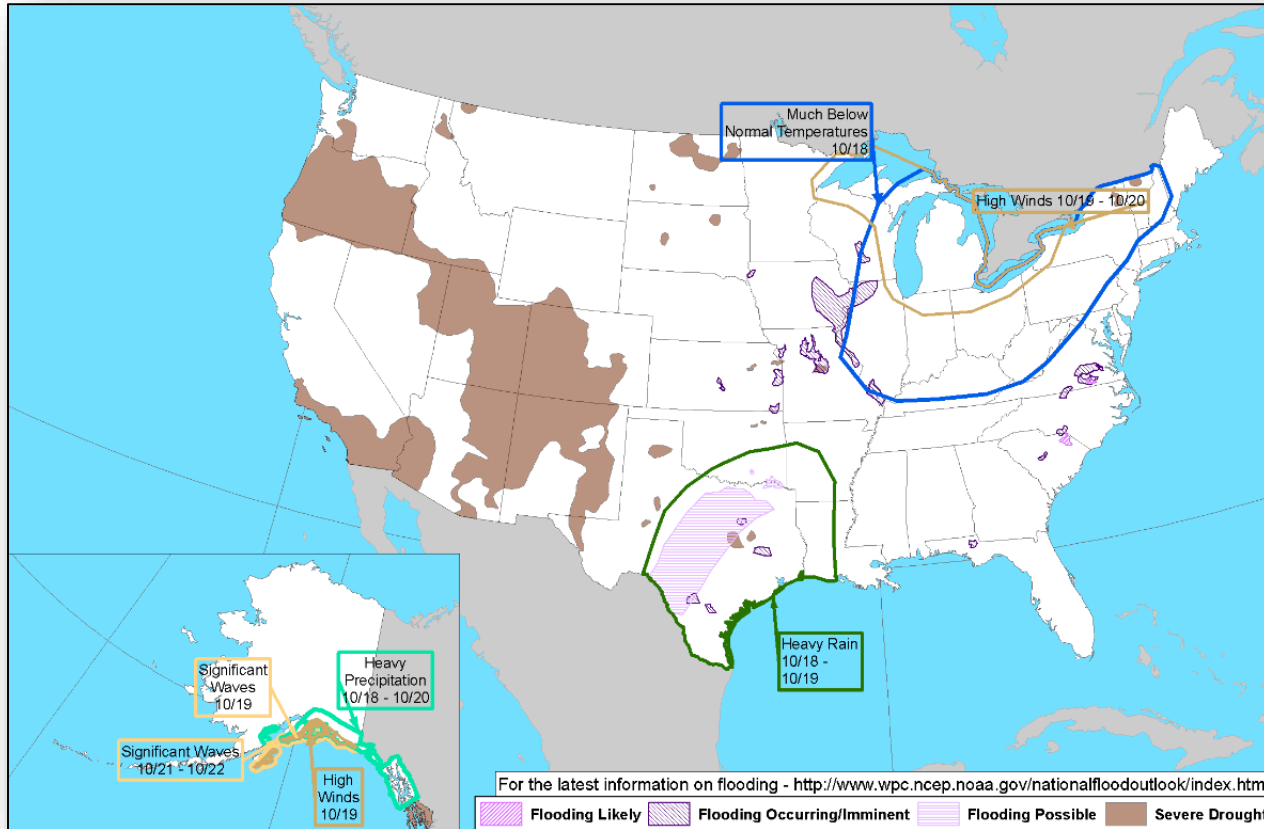


**Wednesday**

# Hazards Outlook – Oct 18-22



FEMA



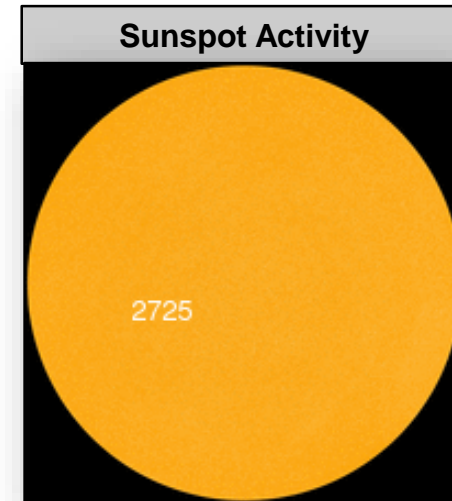
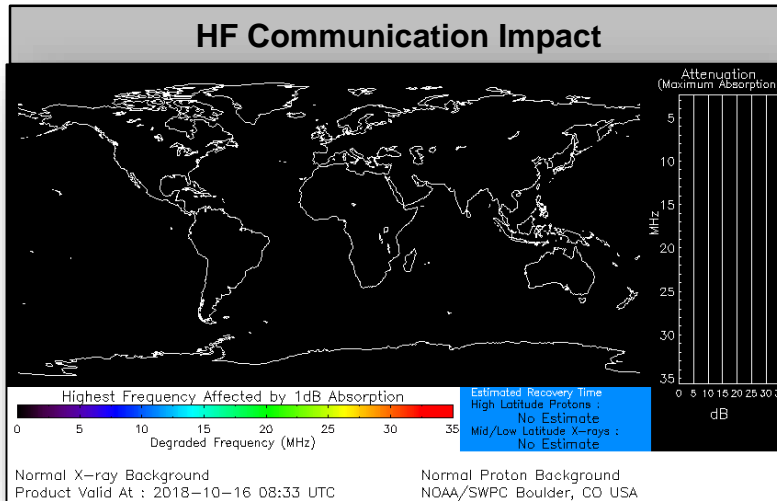
# Space Weather



FEMA

	Space Weather Activity	Geomagnetic Storms	Solar Radiation	Radio Blackouts
Past 24 Hours	None	None	None	None
Next 24 Hours	None	None	None	None

For further information on NOAA Space Weather Scales refer to: <http://www.swpc.noaa.gov/noaa-scales-explanation>





# Joint Preliminary Damage Assessments



FEMA

Region	State / Location	Event	IA / PA	Number of Counties		Start – End
				Requested	Completed	
III	PA	Severe Weather July 21-27, 2018	IA	12	12	9/5 – 9/27
			PA	14	12	9/5 – TBD
	PA	Severe Weather August 10-15, 2018	IA	14	14	9/5 – 9/26
			PA	15	14	9/5 – TBD

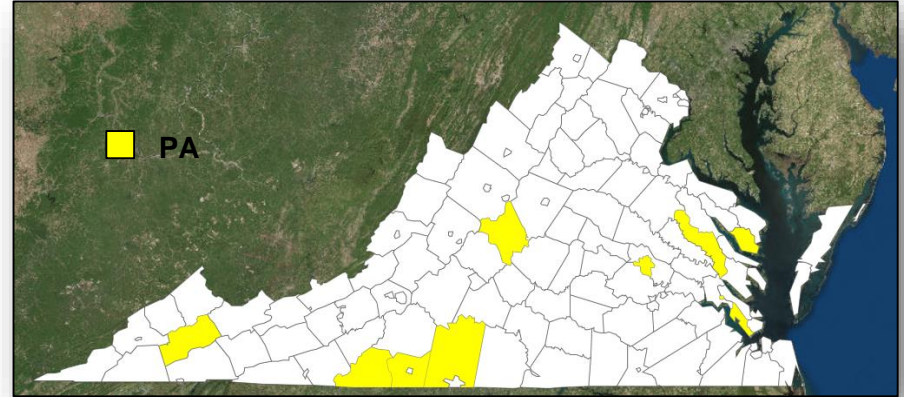
# Declaration Approved



FEMA

## **FEMA-4401-DR-VA**

- On October 15, 2018, a Major Disaster Declaration was approved for the Commonwealth of Virginia
- For Hurricane Florence that occurred September 8-21, 2018
- Provides:
  - Public Assistance for 7 counties and 3 independent cities
  - Hazard Mitigation for the entire commonwealth
- FCO is Donald L. Keldsen



# Disaster Requests & Declarations



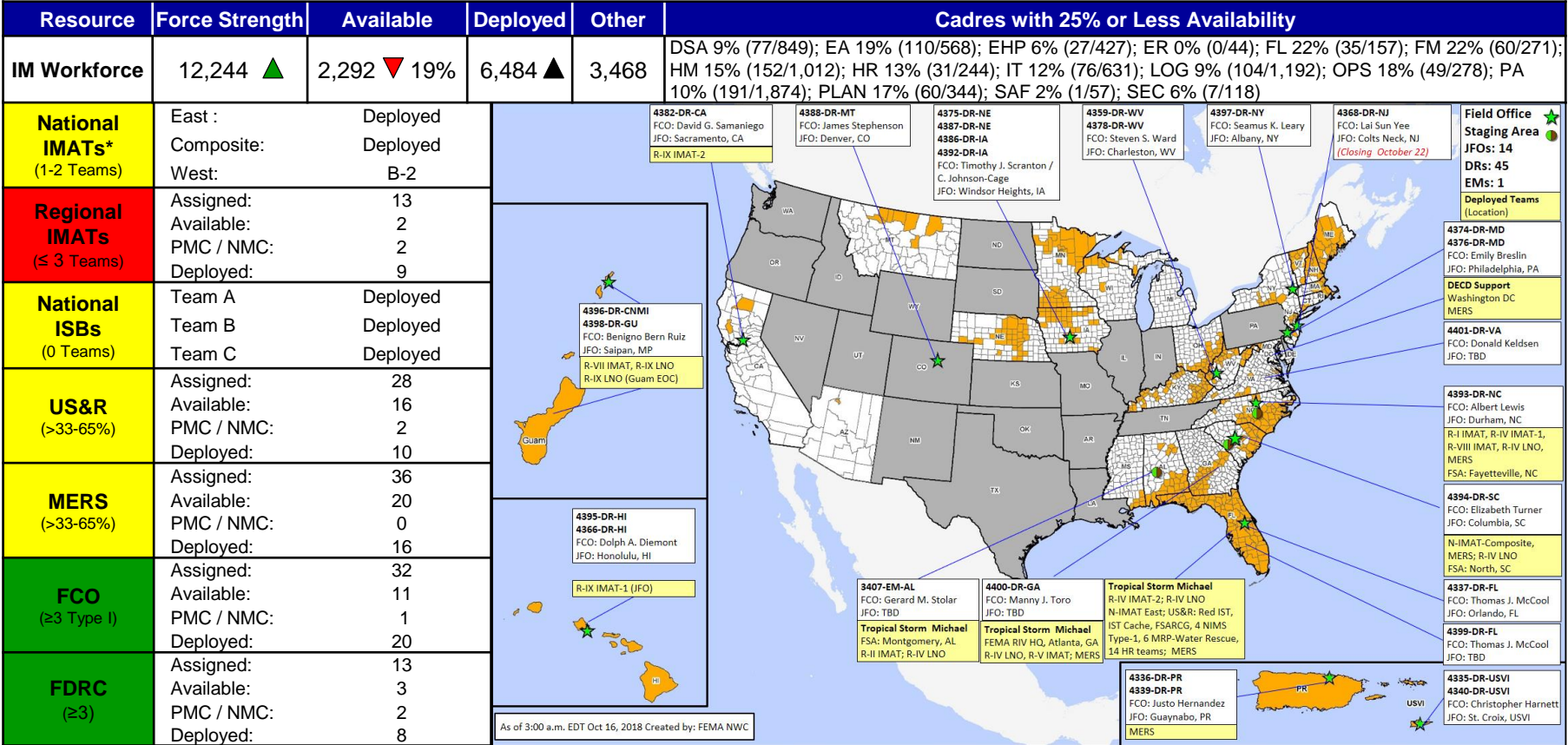
FEMA

Declaration Requests in Process					Requests APPROVED (since last report)	Requests DENIED (since last report)
<b>3</b>	IA	PA	HM	Date Requested	<b>1</b>	<b>2</b>
PA – DR (Appeal) Severe Storms, Flooding, and Landslides		X	X	September 7		October 15
NC – DR (Appeal) Severe Storms, Flooding, Landslides, and Mudslides	X	X	X	September 19		
SD – DR (Appeal) Severe Storms and Flooding		X	X	September 25		October 15
KS – DR Severe Storms, Straight-line Winds, and Flooding		X	X	September 25		
VA – DR Hurricane Florence		X	X	October 3	October 15	
WI – DR Severe Storms, Tornadoes, Straight-line Winds, Flooding and Landslides	X	X	X	October 4		

# Readiness – Deployable Teams and Assets



FEMA



\* **B-2 Status:** Assemble ≤ 2-hrs, On Site ≤ 18-hrs; **B-48 Status:** Assemble and deploy ≤ 48hrs; **Charlie Status:** No team assemble time requirement

# FEMA Readiness – Activation Teams



**FEMA**

Status		Activated Team	Activation Level	Activation Times	Reason / Comments
<b>NWC</b> (5 Teams)	Steady State				
<b>NRCC</b> (2 Teams)	Activated	Gold	Level II Response Operations Cell (ROC)	Day shift  Night shift	Hurricane Michael
<b>HLT</b>	Activated				
<b>RWC / MOCs</b> (10 Regions)	Activated	Region IV	Enhanced Watch	Night shift only	Hurricane Michael
<b>RRCCs</b> (10 Regions)	Activated	Region IV	Level I	Day shift only	Hurricane Michael

**Backup Regions: VI, VIII, & X**



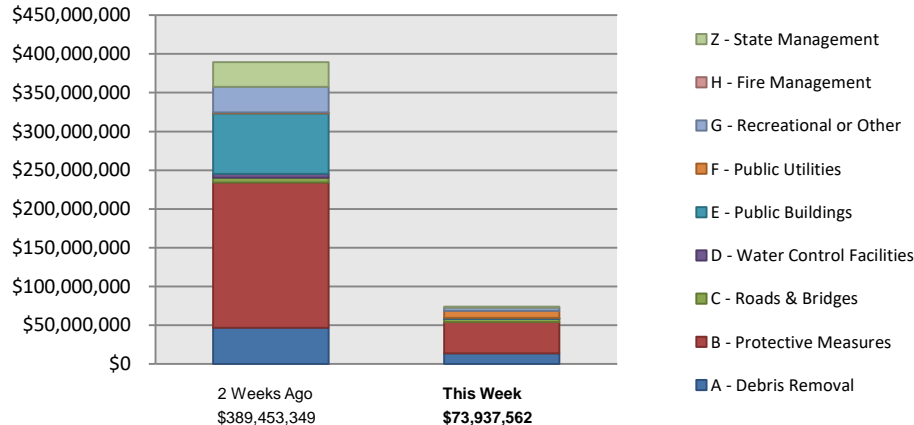
# Public Assistance Grant Program



FEMA

PA Project Worksheets Obligated in past week, as of 10/15/18 at 1500 EDT										
PA Category	Emergency Work		Permanent Work					H - Fire Management	Z - State Management	Total
	A - Debris Removal	B - Protective Measures	C - Roads & Bridges	D - Water Control Facilities	E - Public Buildings	F - Public Utilities	G - Recreational or Other			
Number Of PWs Obligated	51	64	39	8	39	23	24	0	26	274
Federal Share Obligated	\$13,809,931.46	\$40,201,311.09	\$4,041,686.39	\$161,283.97	\$1,219,470.79	\$8,955,815.78	\$4,157,686.07	\$0.00	\$1,390,376.54	\$73,937,562.09

## Public Assistance Obligated per Category In the Past 2 Weeks – 10/1/2018 through 10/15/2018



## This weeks PA Highlights

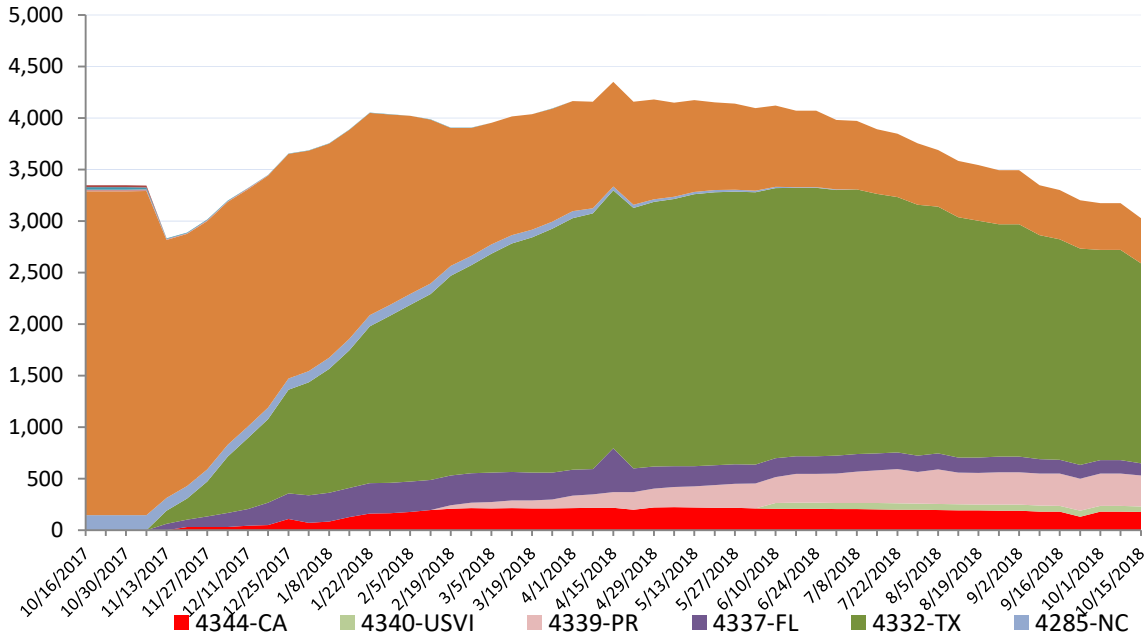
- In 4339-PR
  - \$10 Million obligated for Category A – Debris Removal
  - \$36.7 Million obligated for Category B – Protective Measures
- In 4322-NY
  - \$3.9 Million obligated for Category F – Public Utilities

# Direct Housing

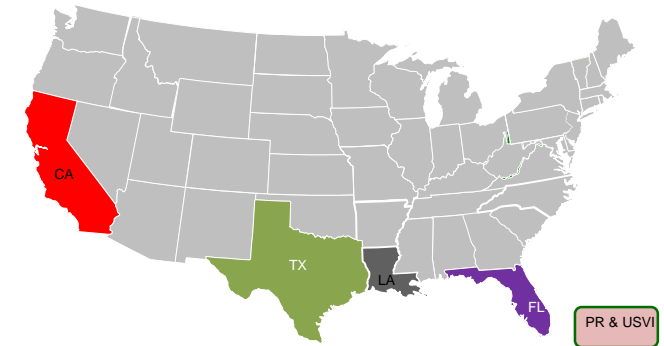


FEMA

**Total Households in FEMA Direct Housing per State**  
 Past Year per Week, 10/16/2017 – 10/15/2018, There are currently **3,027** Households  
 Occupying **3,027** Temporary Units



DR	IA Declaration Date	Program End Date	Current # of Households in Direct Housing (Weekly Change)
4277-LA	8/14/2016	2/14/2018	439(-14)
4332-TX	8/25/2017	2/25/2018	1,940 (-101)
4337-FL	9/10/2017	3/10/2018	118 (-14)
4339-PR	9/10/2017	3/20/2019	302 (-9)
4340-USVI	9/10/2017	3/20/2019	52 (-4)
4344-CA	10/10/2017	4/10/2018	176 (-4)
4393-FL	10/15/2018		1



States with Currently Occupied Units

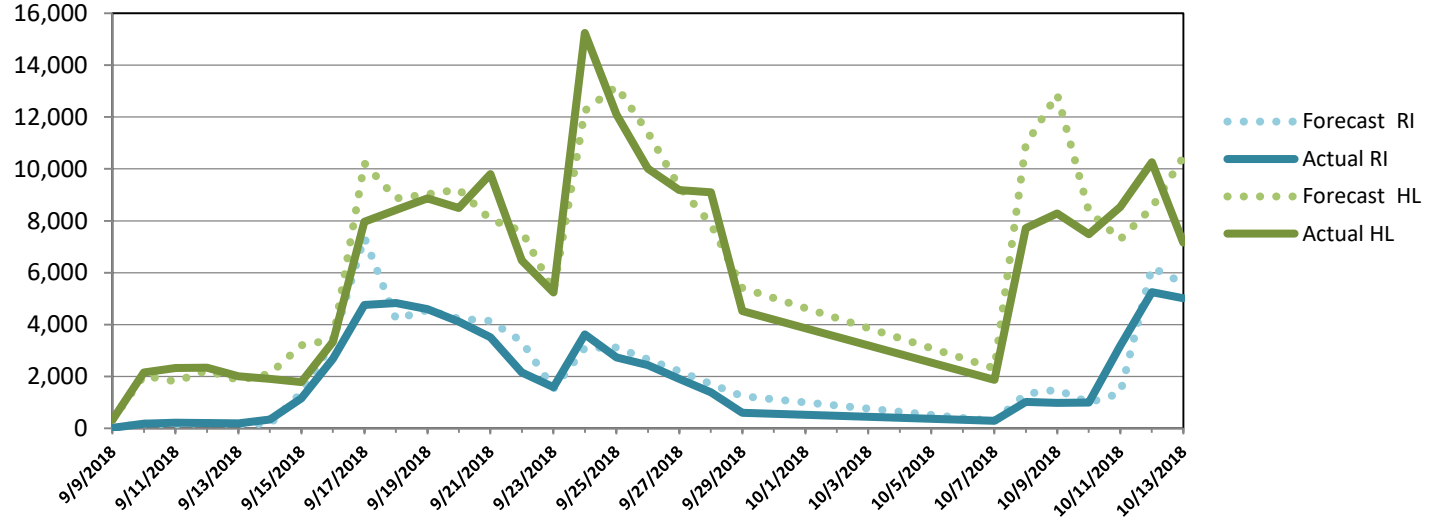
# NPSC Call Activity



FEMA

NPSC Call Activity in the Past Week 10/07/2018 through 10/13/2018		
Call Type	Projected Calls	Actual Calls
Registration Intake:	17,232	16,732
Helpline:	60,715	51,292
<b>Combined:</b>	<b>77,947</b>	<b>68,024</b>

NPSC Call Forecasting and Actual Calls Over the Past 4 Weeks  
9/9/2018 through 10/13/2018



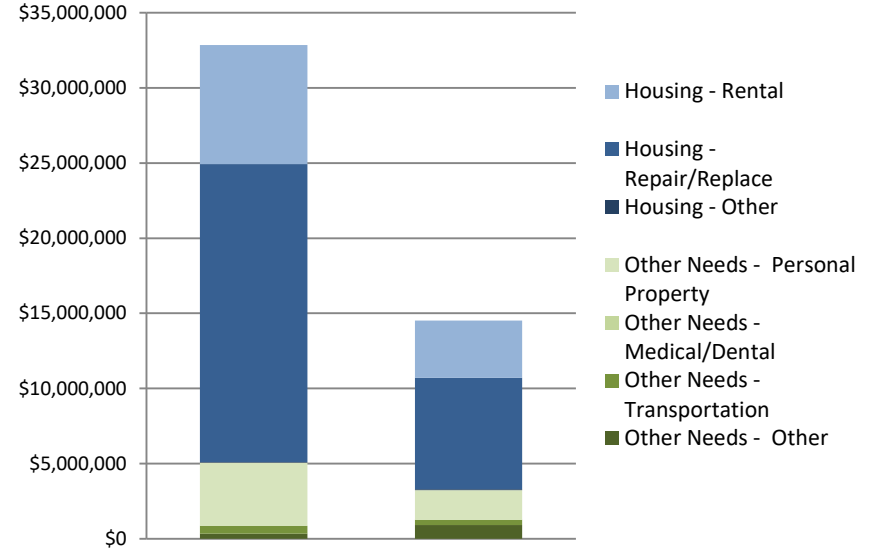
# Individual Assistance Activity



FEMA

Individuals and Households Program Activity As Of: 10/15/18					
	In Past 7 Days			Cumulative	
	Applicants Approved	Amount Approved	Applicants Approved	Amount Approved	
Open Registration Period	4393-NC Declared 09-14-2018		End Of Reg Period 11-13-2018		
	Housing Assistance	2,176	\$5,963,548.90	22,620	\$81,723,112.22
	Other Needs Assistance	2,065	\$2,120,843.44	10,772	\$15,717,874.35
	<b>Total IHP</b>	<b>\$8,084,392.34</b>		<b>\$97,440,986.57</b>	
	<b>Average IHP</b>			<b>\$3,481</b>	
	<b>Total Max Grants</b>			<b>214</b>	
	4394-SC Declared 09-16-2018		End Of Reg Period 11-20-2018		
	Housing Assistance	699	\$3,005,943.96	3,533	\$14,493,059.90
	Other Needs Assistance	403	\$520,512.22	1,180	\$1,857,308.42
	<b>Total IHP</b>	<b>\$3,526,456.18</b>		<b>\$16,350,368.32</b>	
	<b>Average IHP</b>			<b>\$4,010</b>	
	<b>Total Max Grants</b>			<b>7</b>	
	4396-MP Declared 09-29-2018		End Of Reg Period 11-28-2018		
	Housing Assistance	32	\$46,686.00	32	\$46,686.00
	Other Needs Assistance	44	\$49,317.28	44	\$49,317.28
<b>Total IHP</b>	<b>\$96,003.28</b>		<b>\$96,003.28</b>		
<b>Average IHP</b>			<b>\$1,746</b>		
<b>Total Max Grants</b>			<b>0</b>		
4399-FL Declared 10-11-2018		End Of Reg Period 12-10-2018			
Housing Assistance	58	\$139,834.58	58	\$139,834.58	
Other Needs Assistance	23	\$44,569.50	23	\$44,569.50	
<b>Total IHP</b>	<b>\$184,404.08</b>		<b>\$184,404.08</b>		
<b>Average IHP</b>			<b>\$3,073</b>		
<b>Total Max Grants</b>			<b>4</b>		
Other IHP Active	<b>15 Declarations IHP Programmatically Open - Closed Registration *</b>				
	Housing Assistance	504	\$2,120,275.21		
	Other Needs Assistance	294	\$496,667.71		
	<b>Total IHP</b>	<b>\$2,616,942.92</b>			
	<b>Total IHP Approved in Past Week</b>	<b>\$14,508,198.80</b>			

IHP Approved per Category in the Past 2 Weeks – 10/1/2018 through 10/15/2018



# Great Shakeout Drill – 10/18 at 10:18



FEMA

It's important that we are prepared for emergencies. Earthquakes can happen anywhere: at work, at home, at school, or even on vacation.

The Great ShakeOut drill is an opportunity to prepare yourself, your family, and your organization by practicing protective actions to take during earthquakes and other aspects of your emergency plans. The Great ShakeOut Earthquake Drill will occur on October 18th at 10:18 am local time.

## How to Participate (From [www.shakeout.org](http://www.shakeout.org))

- Plan Your Drill
  - Register at [Shakeout.org/Register](http://Shakeout.org/Register)
  - Download a Drill Broadcast recording
- Get Prepared for Earthquakes
  - Do a "Hazard Hunt" for things that might fall
  - Create a personal disaster plan
- Share the ShakeOut
  - Invite friends and family to participate
  - Share photos and stories of your drill

## Protect yourself during an Earthquake!



Shake  
Out™

Register at: [www.ShakeOut.org](http://www.ShakeOut.org)





# FEMA

**FEMA's mission is helping people before, during, and after disasters.**

Click [here](#) to subscribe to this briefing.