

201809 Hurricane Florence Data Sources

Geospatial Information and Remotely Sensed Imagery Products

September-26-2018

Catalog Info

Hazards Data Distribution System (HDDS)

Select Event: '201809_Hurricane_Florence' -> click on '+' and then 'Search'

Download Shapefiles for image footprints

https://hddsexplorer.usgs.gov/data/list/disaster/201809_Hurricane_Florence/shapefiles/index



More information about HDDS: <http://hdds.usgs.gov/hazards-data-distribution-system-hdds>

HDDS Emergency Operations - Collection Management Tool (area of interest for disaster imagery collections) [Request new disaster related imagery here.](#)

<http://cmt.usgs.gov/>

NOTE: We have changed the method for symbology of the image footprints.

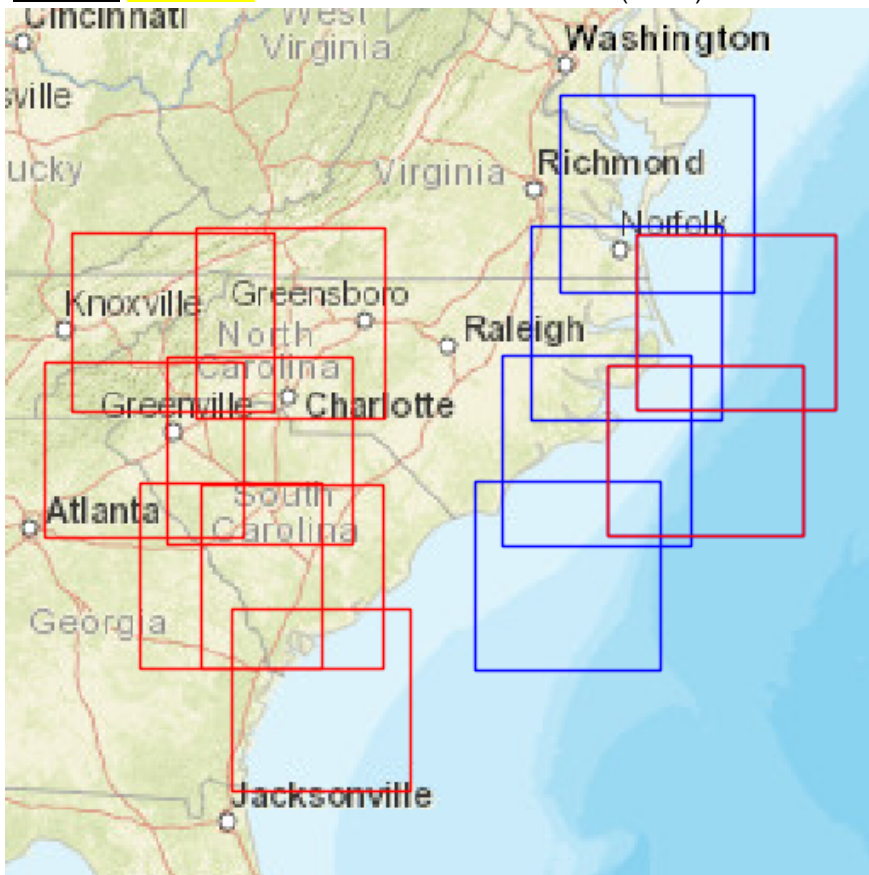
We now highlight new image footprints as **red** or **blue**, where red reflects the newest footprints from the last 48 hours and **blue** reflects footprints from the last 7 days.

-  New footprints from the past 48 hours
-  Footprints from the last 7 days

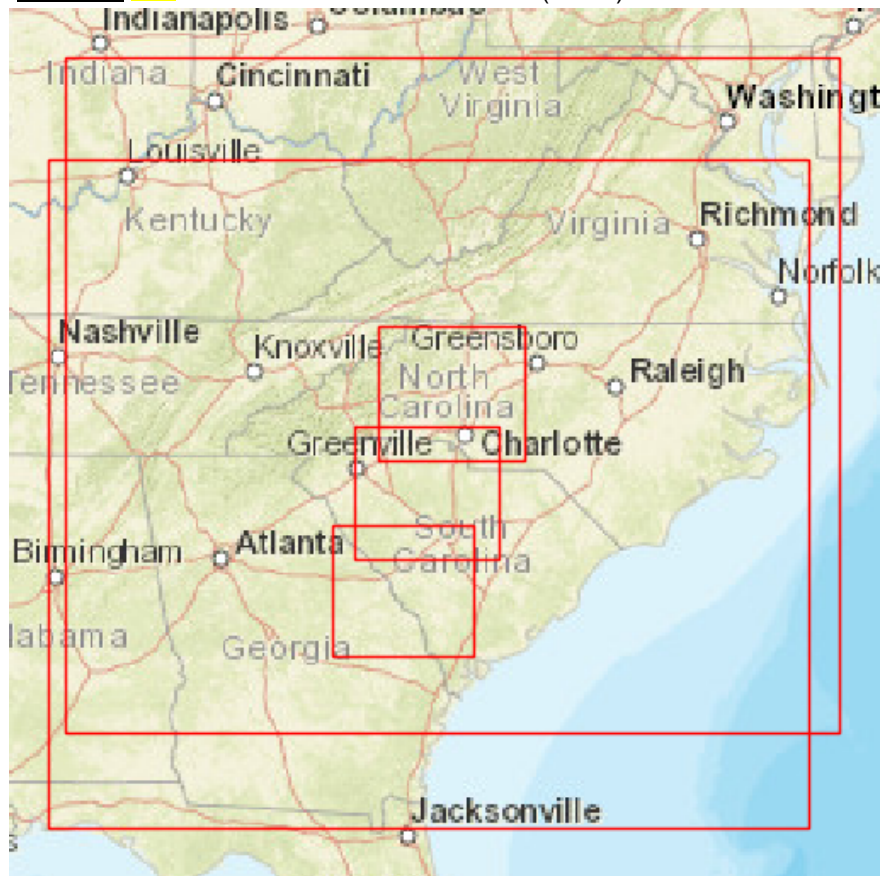
Platform: **AERIAL** scenes from the last 48 hours (in red) and from the last 7 days (in blue) ([view in Voyager](#))



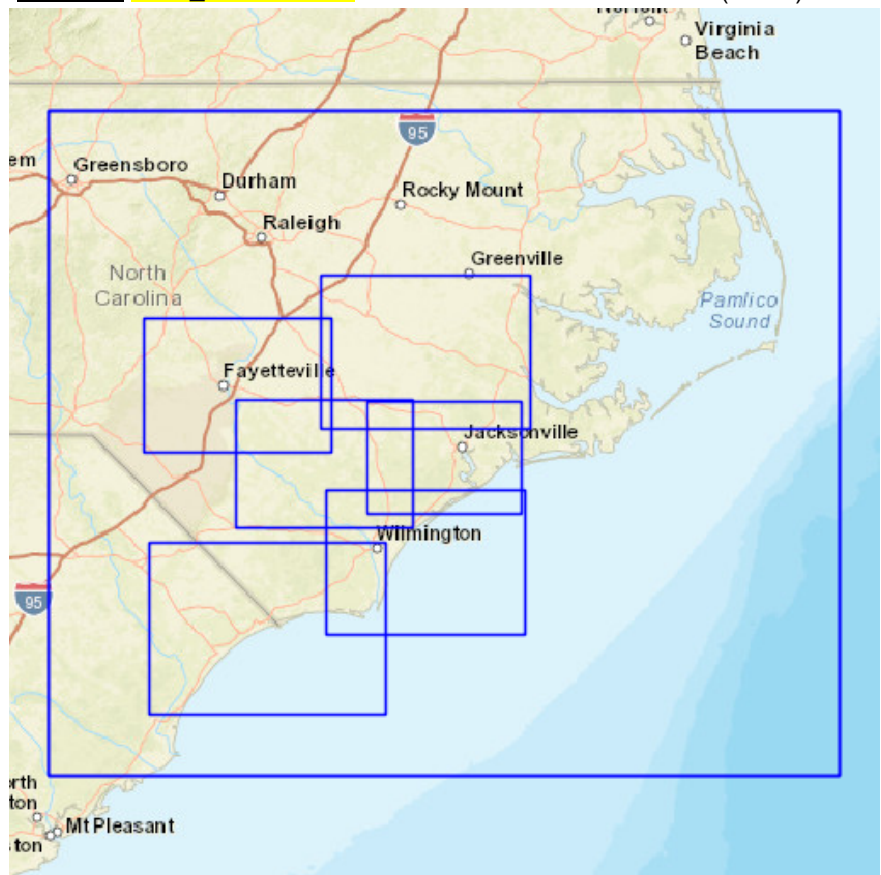
Platform: **LANDSAT** scenes from the last 48 hours (in red) and from the last 7 days (in blue) ([view in Voyager](#))



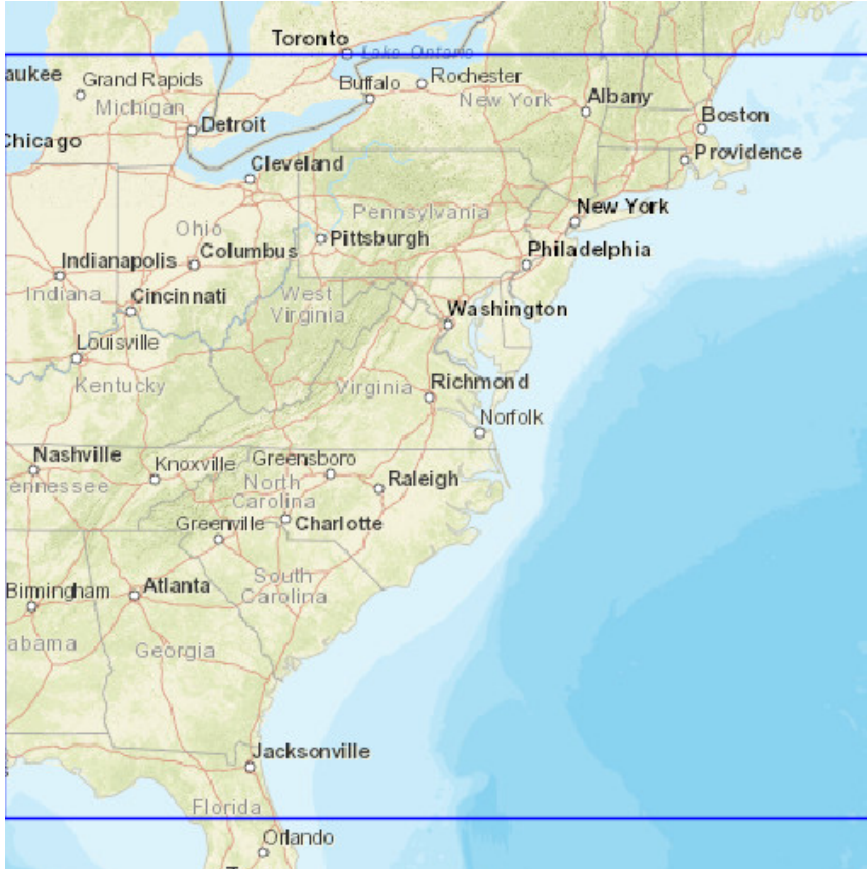
Platform: **IRS** scenes from the last 48 hours (in red) and from the last 7 days (in blue) ([view in Voyager](#))



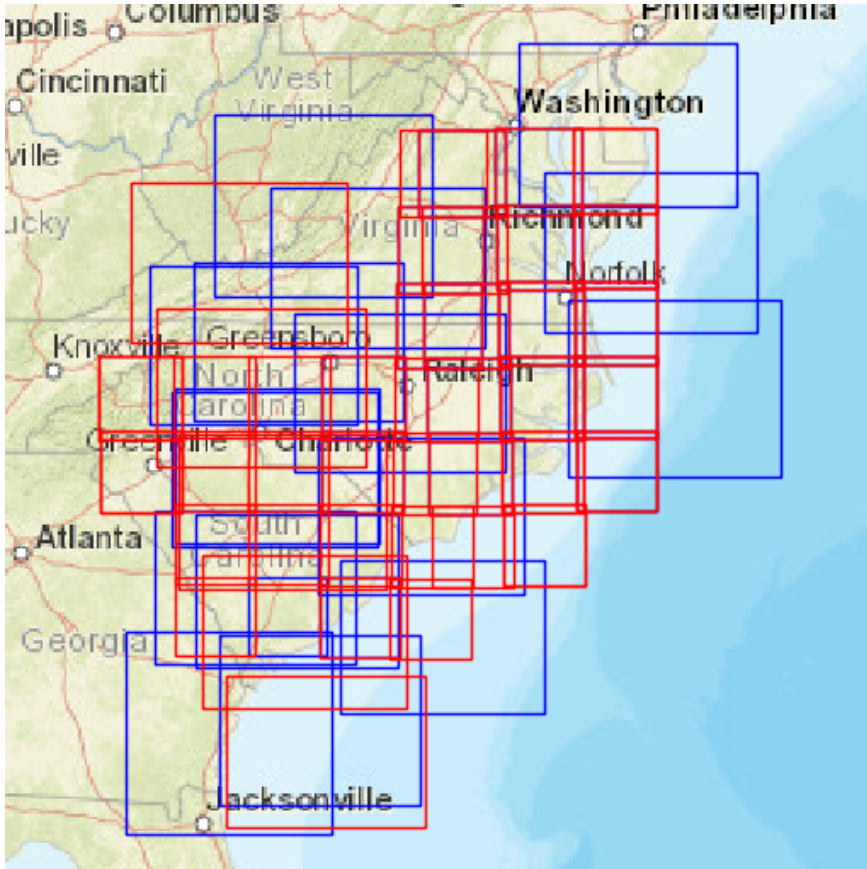
Platform: **MAP PRODUCTS** scenes from the last 48 hours (in red) and from the last 7 days (in blue) ([view in Voyager](#))



Platform: **REPORTS** scenes from the last 48 hours (in red) and from the last 7 days (in blue) ([view in Voyager](#))



Platform: **SENTINEL** scenes from the last 48 hours (in red) and from the last 7 days (in blue) ([view in Voyager](#))



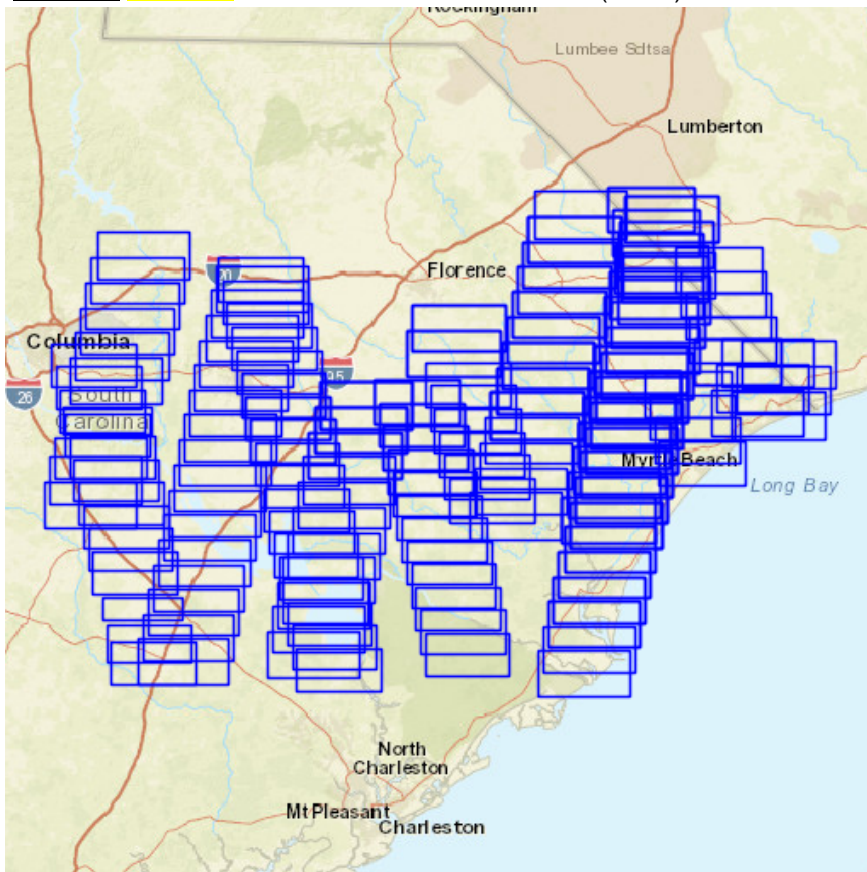
HDDS Restricted

If you have not registered on either EarthExplorer or HDDS, click the register button in the top right corner of the screen and go thru the registration process. Once registered, you will have access to EarthExplorer and HDDS download capabilities. The first time you attempt to download restricted imagery, you will need to fill out an access request form for that event. Click on 'Access' (upper right of HDDS screen), then select 'To request access to restricted data click here'. Select event from menu. Once granted access, you can download restricted imagery. (note: in most cases the restricted area contains licensed imagery, not all requests can be granted.)

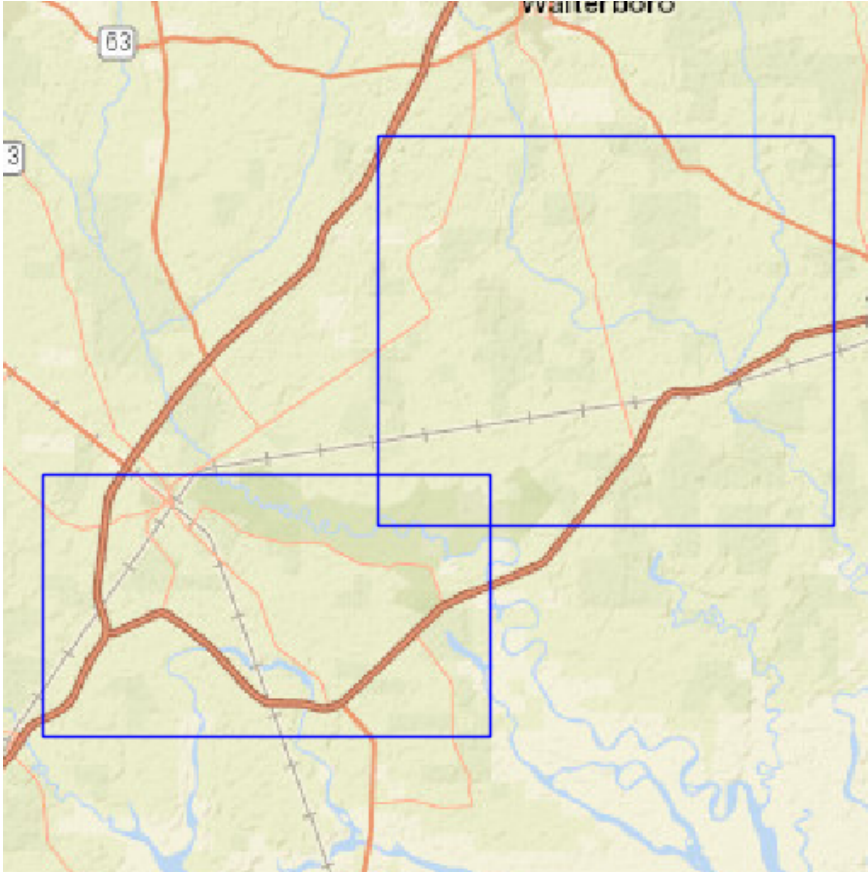
Request access:

https://hddsexplorer.usgs.gov/access/request?event=201809_Hurricane_Florence

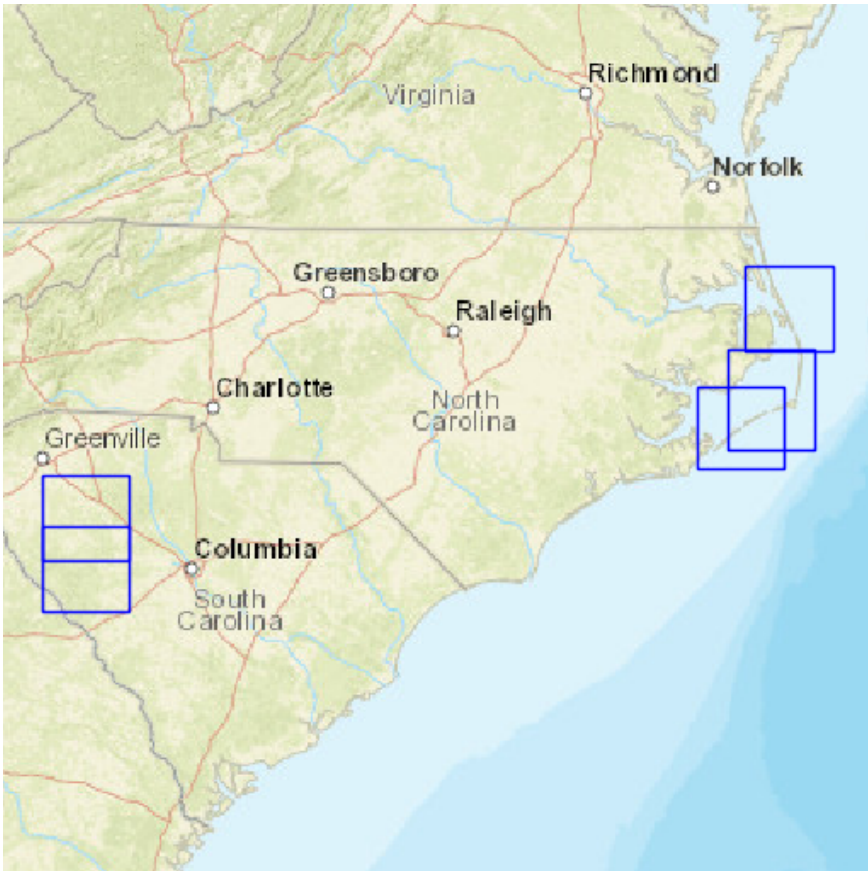
Platform: **PLANET** scenes from the last 48 hours (in red) and from the last 7 days (in blue) ([view in Voyager](#))



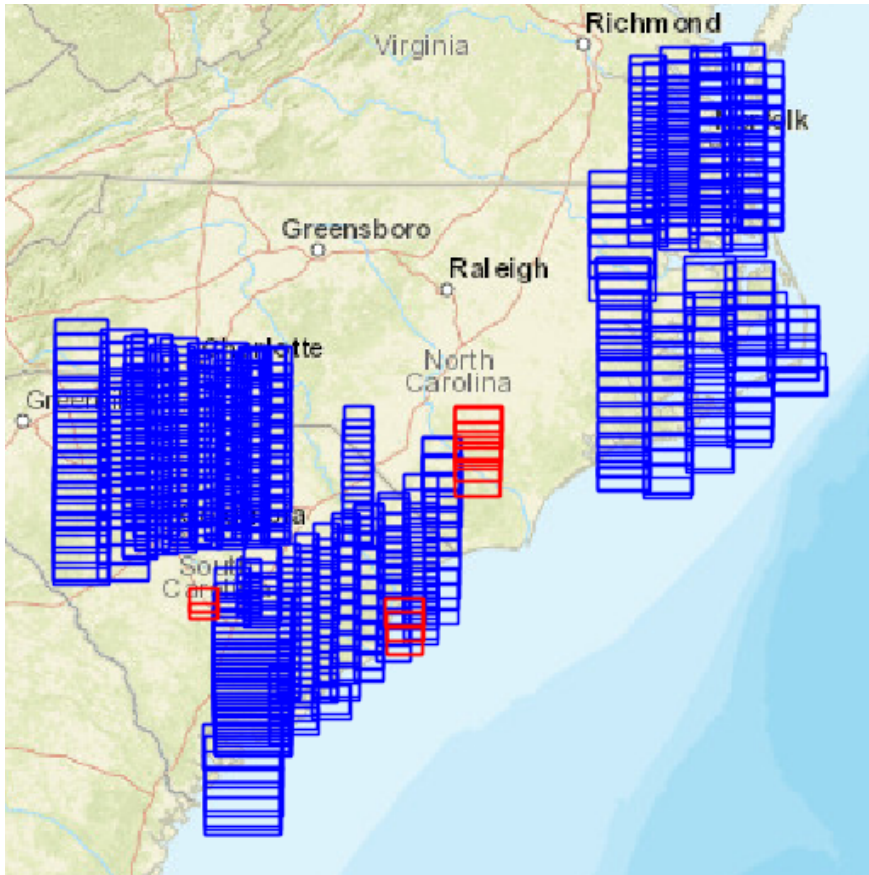
Platform: **PLEIADES** scenes from the last 48 hours (in red) and from the last 7 days (in blue) ([view in Voyager](#))



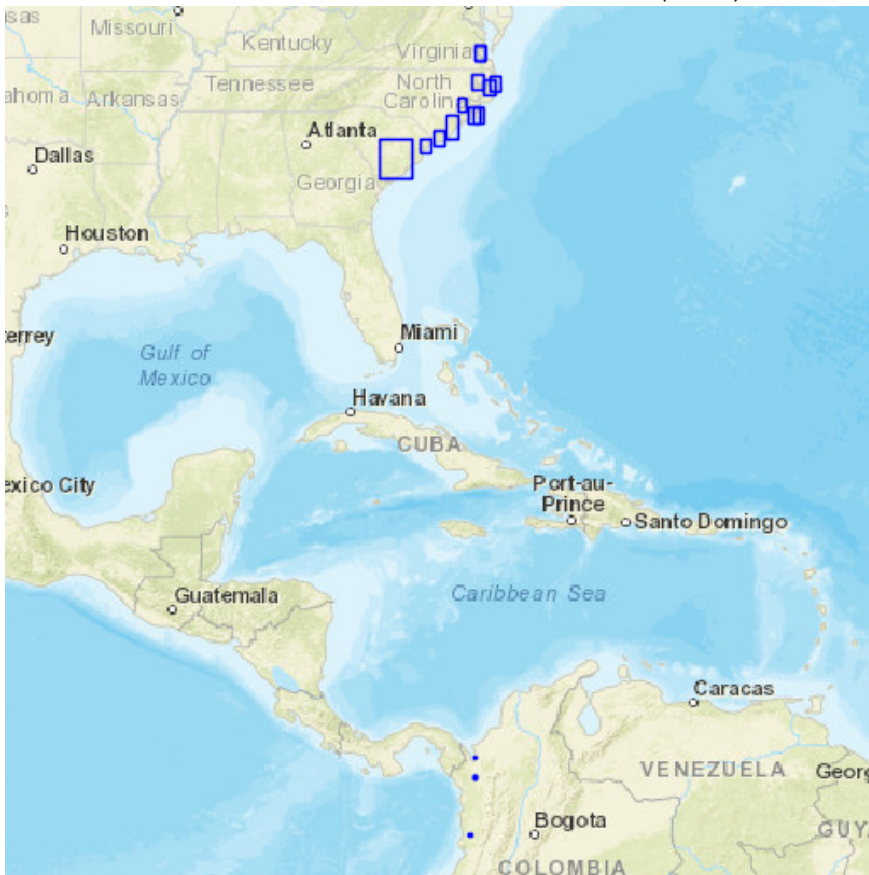
Platform: **SPOT** scenes from the last 48 hours (in red) and from the last 7 days (in blue) ([view in Voyager](#))



Platform: **WORLDVIEW** scenes from the last 48 hours (in red) and from the last 7 days (in blue) ([view in Voyager](#))



Platform: **TERRASARX** scenes from the last 48 hours (in red) and from the last 7 days (in blue) ([view in Voyager](#))

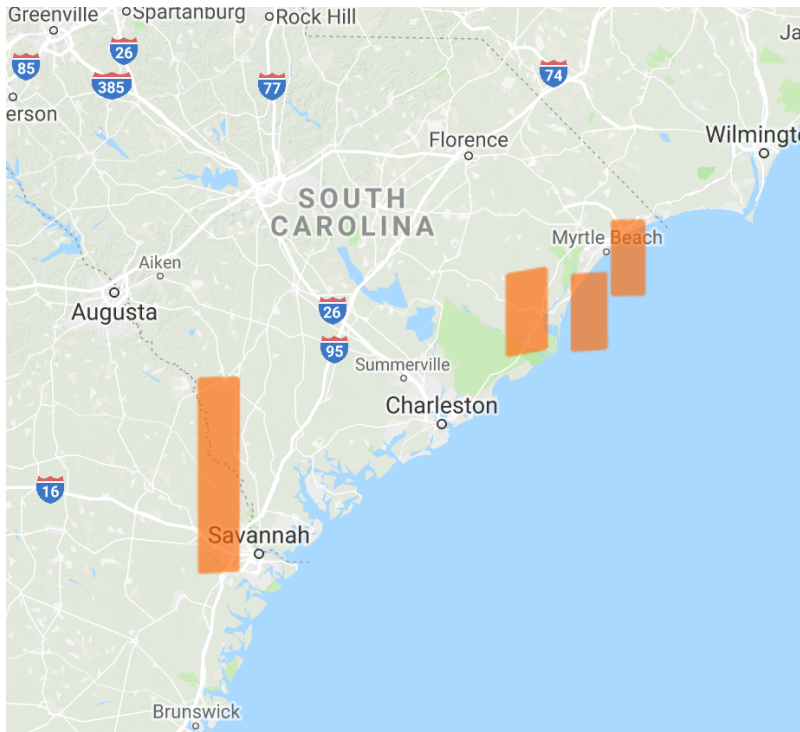


End HDDS

Digital Globe Imagery

Digital Globe imagery is available orthorectified in the NGA funded EnhancedView Web Service. Users with .gov or .mil emails can self-register. <https://evwhs.digitalglobe.com/myDigitalGlobe/>

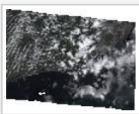
Last 48 hours



Eagle Vision

<http://dev.evr2est.us/scenes/table> and <http://evr2est.us/>

SP6_Pansharpened_1_5M_20180925_EV4_ORTHO_OAK_ISLAND_US_150



Site Eagle Vision 4
Serial Number 26Sep1812074
License Disaster Relief
Mission OAK_ISLAND NC US

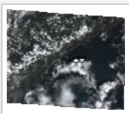
Platform SPOT 6
Image Type Multispectral
GSD 1_5 m
Acquisition Date 25Sep18 - 1025 America/Chicago

Download JP2000

Download MrSID

Download KML

SP6_Pansharpened_1_5M_20180925_EV4_ORTHO_TOPSAIL_BEACH_US_149



Site Eagle Vision 4
Serial Number 26Sep1812075
License Disaster Relief
Mission Topsail_Beach NC US

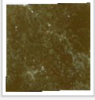
Platform SPOT 6
Image Type Multispectral
GSD 1_5 m
Acquisition Date 25Sep18 - 1025 America/Chicago

Download JP2000

Download MrSID

Download KML

SP7_Pansharpned_1_5M_20180920_EV4_ORTHO_MOUNTVILLE_SC



Site Eagle Vision 4
Serial Number 20Sep1812048
License Disaster Relief
Mission MOUNTVILLE SC US
Hurricane_Florence

Platform SPOT 7
Image Type Multispectral
GSD 1_5 m
Acquisition Date 20Sep18 - 1100
America/Chicago

[Download JP2000](#)
[Download MrSID](#)
[Download KML](#)

SP6_Pansharpned_1_5M_20180920_EV4_ORTHO_ORACOKE_NC



Site Eagle Vision 4
Serial Number 20Sep1812047
License Disaster Relief
Mission ORACOKE NC US
Hurricane_Florence

Platform SPOT 6
Image Type Multispectral
GSD 1_5 m
Acquisition Date 20Sep18 - 1015
America/Chicago

[Download JP2000](#)
[Download MrSID](#)
[Download KML](#)

SP6_Pansharpned_1_5M_20180920_EV4_ORTHO_ATLANTIC_NC



Site Eagle Vision 4
Serial Number 20Sep1812045
License Disaster Relief
Mission ATLANTIC NC US
Hurricane_Florence

Platform SPOT 6
Image Type Multispectral
GSD 1_5 m
Acquisition Date 20Sep18 - 1015
America/Chicago

[Download JP2000](#)
[Download MrSID](#)
[Download KML](#)

PHR1B_PHR_0_5_20180921_EV4_WALTERBORO_SC

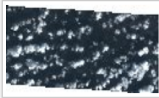


Site Eagle Vision 4
Serial Number 21Sep1812056
License Disaster Relief
Mission WALTERBORO SC US
Hurricane_Florence

Platform Pleiades-1
Image Type Multispectral
GSD 0_5 m
Acquisition Date 21Sep18 - 1115
America/Chicago

[Download JP2000](#)
[Download MrSID](#)
[Download KML](#)

PHR1B_PHR_0_5_20180921_EV4_YEMASSEE_SC



Site Eagle Vision 4
Serial Number 21Sep1812057
License Disaster Relief
Mission YEMASSEE SC US
Hurricane_Florence

Platform Pleiades-1
Image Type Multispectral
GSD 0_5 m
Acquisition Date 21Sep18 - 1115
America/Chicago

[Download JP2000](#)
[Download MrSID](#)
[Download KML](#)

TSX_SAR_3M_20180921_EV4_IMAGE_HH_SRA_strip_015_MYRTLE_BEACH_SC



Site Eagle Vision 4
Serial Number 21Sep1812055
License Disaster Relief
Mission MYRTLE_BEACH SC US
Hurricane_Florence

Platform TSX
Image Type Panchromatic
GSD 3 m
Acquisition Date 21Sep18 - 0430
America/Chicago

[Download JP2000](#)
[Download MrSID](#)
[Download KML](#)

TSX_SAR_3M_20180921_EV4_IMAGE_HH_SRA_strip_005_MANNS_HARBOR_NC



Site Eagle Vision 4
Serial Number 21Sep1812052
License Disaster Relief
Mission Manns_Harbor NC US
Hurricane_Florence

Platform TSX
Image Type Panchromatic
GSD 3 m
Acquisition Date 21Sep18 - 0415
America/Chicago

[Download JP2000](#)
[Download MrSID](#)
[Download KML](#)

Additional map services and journals:

FEMA Hurricane Journal and Map Services:

<https://fema.maps.arcgis.com/apps/MapJournal/index.html?appid=97f53eb1c8724609ac6a0b1ae861f9b5>

Hurricane Florence Disasters Geoplatform:

<https://communities.geoplatform.gov/disasters/category/national-disaster-events/hurricane-florence/>

NOAA Remote Sensing Hurricane Florence Imagery:

<https://storms.ngs.noaa.gov/storms/florence/index.html#10/34.4613/-78.5921>

FEMA GIS Portal:

<https://fema.maps.arcgis.com/apps/MinimalGallery/index.html?appid=6bd1d3fa669343eb87bf7a8a15f028c0>

FEMA SFTP Public Data Site – Hurricane Florence:

<https://disasters.geoplatform.gov/publicdata/NationalDisasters/HurricaneFlorence/>

NASA Disasters GIS Portal:

<https://maps.disasters.nasa.gov/arcgis/home/group.html?id=e675b5aa304c42dea82b58821d19c761>

NHC GIS Data – Hurricane Florence:

https://www.nhc.noaa.gov/refresh/graphics_at1+shtml/212431.shtml?gm_track

Voyager Imagery Indexing System:

http://ec2-54-193-25-181.us-west-1.compute.amazonaws.com/navigo/search?sort=score&stats=true&stats.field=fd_acquisition_date&fq=fs_usgs_dataset_fullname:201809_Hurricane_Florence&disp=D165438F7476&view=card&sortdir=desc

NICB Post Event Imagery

- New Bern -

<https://geoplatform.maps.arcgis.com/home/item.html?id=9bb7ea8ceb07468d91ff4568ec4607ca>

- Simpson Crossing -

<https://geoplatform.maps.arcgis.com/home/item.html?id=cca459e4ebde422bb684a0cef9d0fd06>

- Bay River -
<https://geoplatform.maps.arcgis.com/home/item.html?id=4a62f26635604e72960186d0e33670dc>
- East side of Croatan National Forest -
<https://geoplatform.maps.arcgis.com/home/item.html?id=046a284f933646c4a7f3c238de4984fe>
- Sunset Beach to Oak Island coastline -
<https://geoplatform.maps.arcgis.com/home/item.html?id=4acc21cdf42470d93f588d7b9ef8c2f>
- Jacksonville West -
<https://geoplatform.maps.arcgis.com/home/item.html?id=e88987399ece4745a9f1d3f459f47590>
- Morehead City North -
<https://geoplatform.maps.arcgis.com/home/item.html?id=efdd7c73500047cc803493cfe80f7ceb>

Hurricane Florence response: Flights added to Google Crisis Map

[*Credit should be provided as "Google, Inc. 2018"*]

<http://google.org/crisismap/google.com/2018-florence>

- Wilmington 9/20
https://storage.googleapis.com/nc_wilmington_20180920/{Z}/{X}/{Y}
- Lumberton 9/19
https://storage.googleapis.com/nc_lumberton_20180919/{Z}/{X}/{Y}

Send comments, additions, and corrections to:

Ran Goldblatt and Brooke Hatcher

Federal Emergency Management Agency (FEMA) (New Light Technologies, Inc. (CTR))

ran.goldblatt@associates.fema.dhs.gov

brooke.hatcher@associates.fema.dhs.gov

If you would like to be on the distribution list, send me an email