



FEMA

Daily Operations Briefing

**Monday, August 6, 2018
8:30 a.m. EDT**

Significant Activity – Aug 3-6



FEMA

Significant Events: Wildfires; Hurricane Hector

Tropical Activity:

- Atlantic – Disturbance 1 – Low (20%)
- Eastern Pacific – Tropical Storm John; Tropical Storm Ileana; Disturbance 1 – High (80%)
- Central Pacific – Hurricane Hector (CAT 4)
- Western Pacific – No activity affecting U.S. interests

Significant Weather:

- Severe storms – Central High Plains and Middle Mississippi Valley to Lower MI
- Flash flooding possible – Central High Plains to Central Plains; Middle Mississippi Valley to Lower MI
- Elevated/critical fire weather – CA
- Red Flag Warnings – CA, NV, & AZ

Declaration Activity:

- Major Disaster Declaration approved – CA
- FMAG approved – Angel Springs Fire, WA

Carr Fire – Shasta and Trinity counties, CA



FEMA

Current Situation: Acres burned: 160k (+15k); containment: 43% (+2)

Impacts:

- Structures / Homes:
 - Threatened: 1,195 (-129) homes, 22 multiple residences, 12 commercial properties
 - Damaged: 190 (+2) homes, 26 (+3) commercial, 60 minor structures
 - Destroyed: 1,080 (+10) homes, 24 (+3) commercial, 500 (+8) minor structures

Food, Water, and Sheltering:

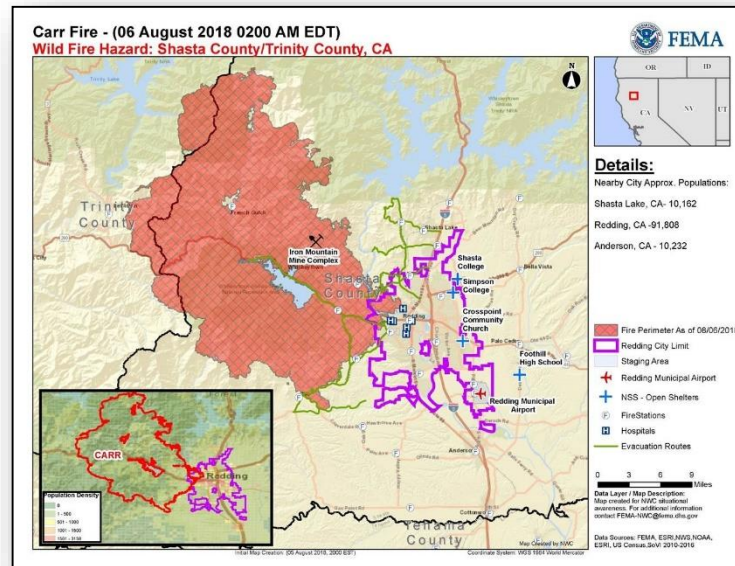
- Shelters / Occupants: 3 (-1) open / 73 (-79) occupants (*ARC Midnight Shelter Count*)
- Evacuations: Mandatory evacuations in effect for 21k people (-1k)
- ISB Team and commodities are staged at Redding Municipal Airport

Health and Medical:

- Fatalities / Injuries: 7 (+1) / 1
- HHS reports all major medical facilities are operational; no shortfalls identified
- 171 patients remain evacuated from skilled nursing facilities

Energy:

- Minimal customers without power in Shasta County; 151 customers without gas
- No immediate threat to power quality/generation or dam operations



Carr Fire – Shasta and Trinity counties, CA



FEMA

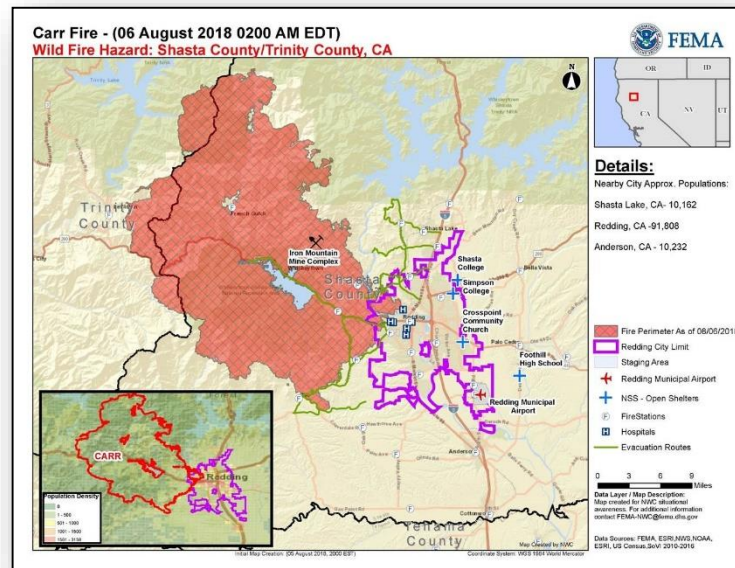
Response

State / Local Response

- CA EOC at Full Activation
- Governor declared a State of Emergency for six counties
- Major Disaster Declaration requested August 4, 2018

FEMA Response

- Major Disaster Declaration FEMA-4382-DR-CA approved August 4, 2018
- Emergency Declaration FEMA-3398-EM-CA approved July 28, 2018
- FMAG FEMA-5259-FM-CA approved July 23, 2018; amended August 2, 2018 to include Trinity County
- Region IX:
 - IMAT-2, two LNOs, DCO, and ESFs (1, 3, 4, 6, 7, 12) deployed to CA EOC
 - Region IX at Steady State, continues to monitor
- NWC continues to monitor and report as warranted



Mendocino Fire Complex, CA



FEMA

Current Situation:

Acres burned: 267k (+38k); containment: 33% (+1)

Impacts:

- Structures / Homes:
 - Threatened: 9k (-6k) homes, 300 commercial properties
 - Damaged: 12 homes, 14 (+3) minor structures
 - Destroyed: 67 (+13) homes, 1 multiple residence, 62 (+13) minor structures
- Minimal customers without power
- Road closures remain in effect for sections of Highways 20, 29, and 175

Health and Medical:

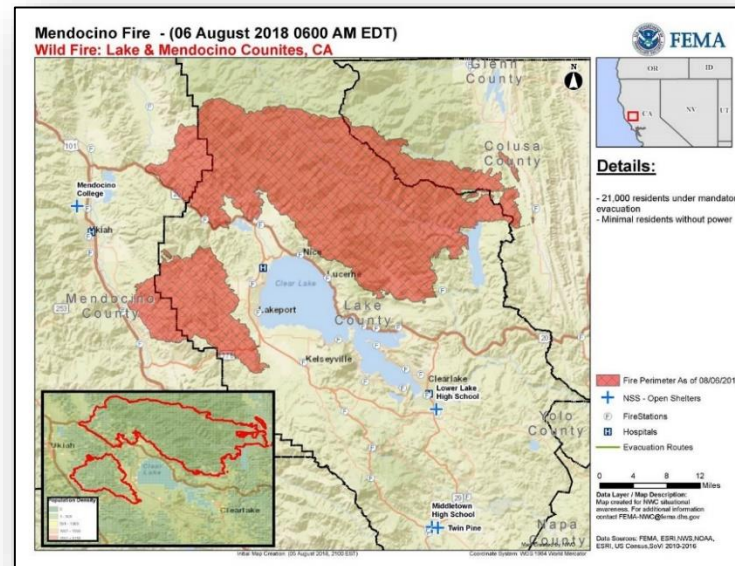
- Fatalities / Injuries: 0 / 0

Food, Water and Sheltering:

- Evacuations: Mandatory evacuations in effect for 21k people
- Shelters: 8 (+2) open / 577 (+195) occupants (ARC Midnight Shelter Count)

Response

- CA EOC at Full Activation
- Governor declared a State of Emergency for six counties
- Region IX:
 - FMAG FEMA-5262-FM-CA approved July 28, 2018
 - IMAT-2, two LNOs, DCO, and ESFs (1, 3, 4, 6, 7, 12) deployed to CA EOC
 - Region IX at Steady State, continues to monitor
- NWC continues to monitor and report as warranted



Angel Springs Fire – Lincoln County, WA



FEMA

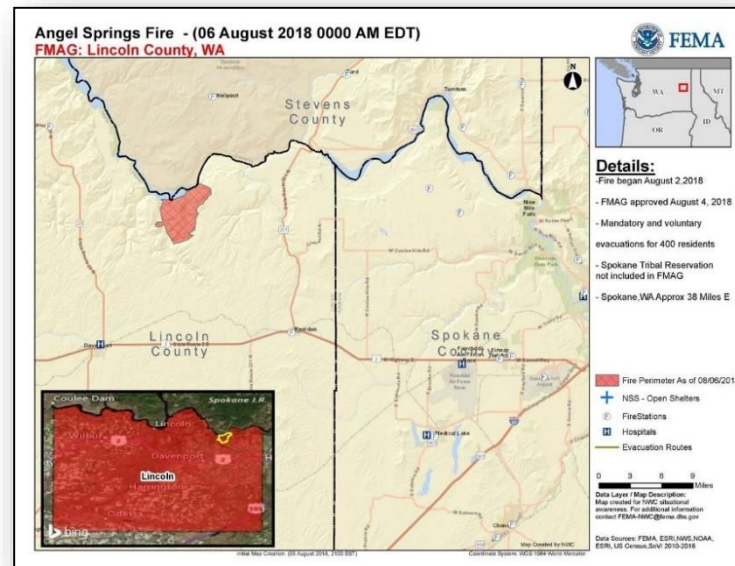
Fire Name (County)	FMAG Number	Acres Burned	Percent Contained	Evacuations (Residents)	Structures			Fatalities / Injuries
					Threatened	Damaged	Destroyed	
Angel Springs (Lincoln)	5266-FM-WA	4,500	15%	Mandatory & Voluntary	170 homes	0	3 (2 homes)	0 / 0

Current Situation

- Fire began August 2, 2018 and is burning on State, private, and tribal land
- Burning near multiple communities (combined pop. 800)
- Threatening:
 - 170 homes (84% primary homes, 16% secondary homes)
 - Large scale utilities and major infrastructure including dams and reservoirs
- Mandatory and voluntary evacuations in effect for 200 people
- Fire crossed the Spokane River onto the Spokane Tribal reservation but the reservation is not part of this FMAG
- FMAG approved August 4, 2018

Response

- WA EOC at Partial Activation
- Governor declared a state of emergency for the entire State (wildfire danger)
- FEMA Region X at Steady State, continues to monitor



Wildfire Summary



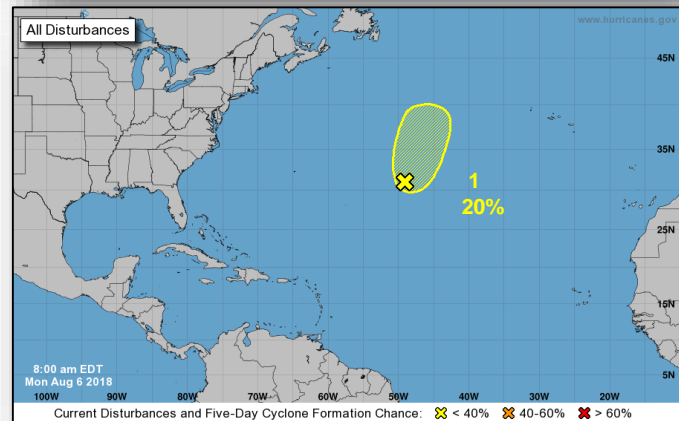
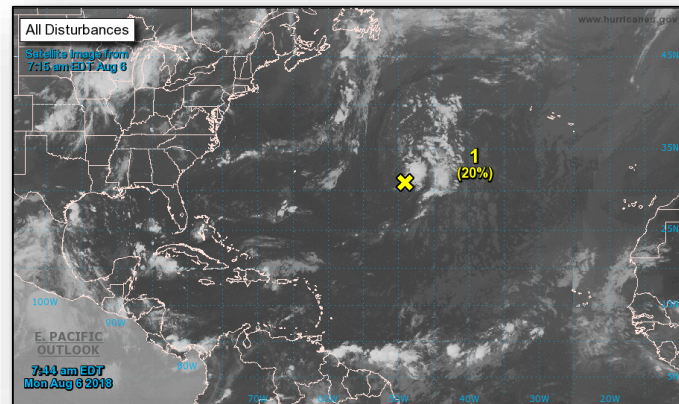
Fire Name (County)	FMAG Number	Acres Burned	Percent Contained	Evacuations (Residents)	Structures			Fatalities / Injuries
					Threatened	Damaged	Destroyed	
Oregon (1)								
South Valley Road FINAL (Wasco)	5265-FM-OR	20,026	60% (+20)	Lifted	212 homes (+40)	0	18 (+4) (3 homes)	0 / 0

Tropical Outlook – Atlantic



Disturbance 1 (as of 8:00 a.m. EDT)

- 1,200 miles WSW of the Azores, moving very little
- Conditions expected to become marginally conducive to acquire subtropical or tropical characteristics over the next day or two
- Formation chance through 48 hours: Low (20%)
- Formation chance through 5 days: Low (20%)



Tropical Outlook – Eastern Pacific



FEMA

Tropical Storm Ileana (Advisory #7A as of 8:00 a.m. EDT)

- 305 miles SE of Manzanillo, Mexico
- Moving NW at 17 mph, parallel to and just offshore of coastal Mexico
- Maximum sustained winds 65 mph
- Expected to become a hurricane by Tuesday
- Hurricane Watch and Tropical Storm Watches/Warnings in effect for coastal areas of southwestern Mexico



Tropical Outlook – Eastern Pacific



FEMA

Tropical Storm John (Advisory #3 as of 5:00 a.m. EDT)

- 335 miles SW of Manzanillo, Mexico
- Moving WNW at 8 mph
- Forecast to become a hurricane later today and a major hurricane Tuesday
- Maximum sustained winds 60 mph
- No coastal watches or warnings in effect

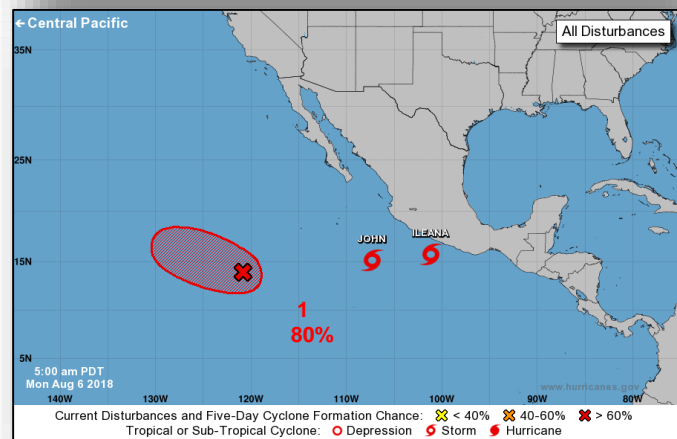
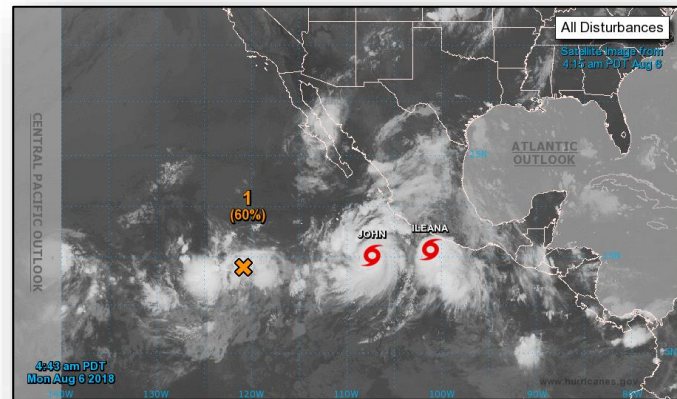


Tropical Outlook – Eastern Pacific



Disturbance 1 (as of 8:00 a.m. EDT)

- Located 1,000 miles SW of the southern tip of Baja California peninsula
- Moving WNW at 5 to 10 mph
- A tropical depression is likely to form by the middle of the week
- Formation chance through 48 hours: Medium (60%)
- Formation chance through 5 days: High (80%)



Tropical Outlook – Central Pacific



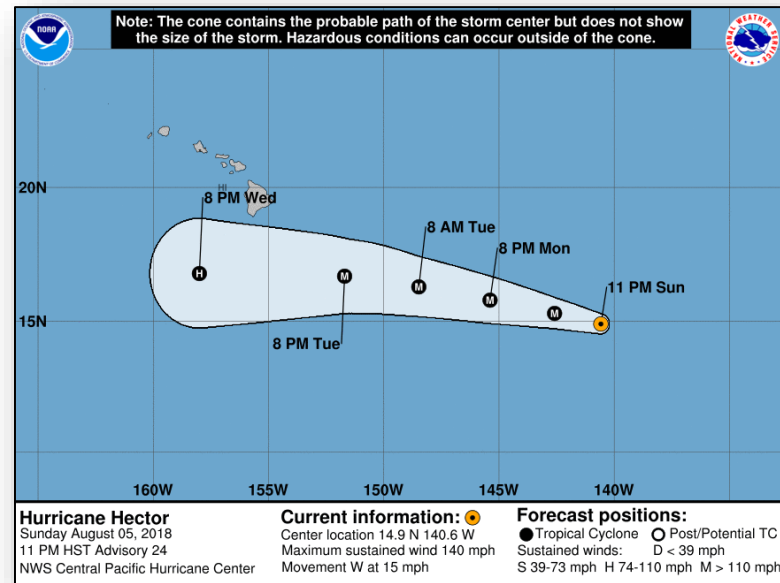
FEMA

Hurricane Hector (CAT 4) (Advisory #24 as of 5:00 a.m. EDT)

- 1,010 miles ESE of Hilo, Hawaii
- Moving W at 15 mph
- Maximum sustained winds 140 mph
- gradual weakening expected tonight through Wednesday
- Hurricane-force winds extend 35 miles
- Tropical-storm-force winds extend 105 miles
- No coastal watches or warnings in effect

Preparations

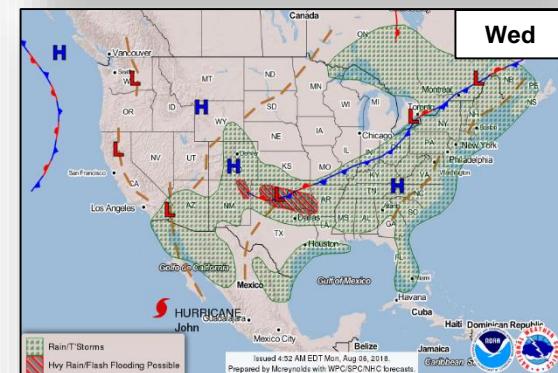
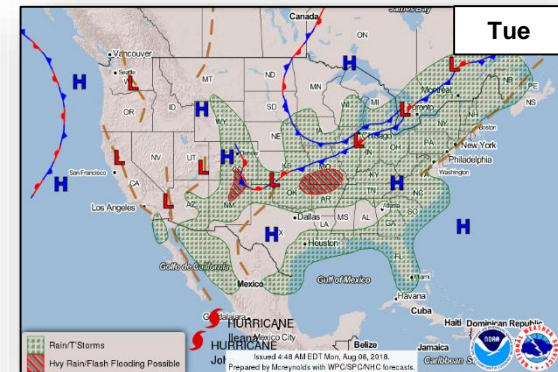
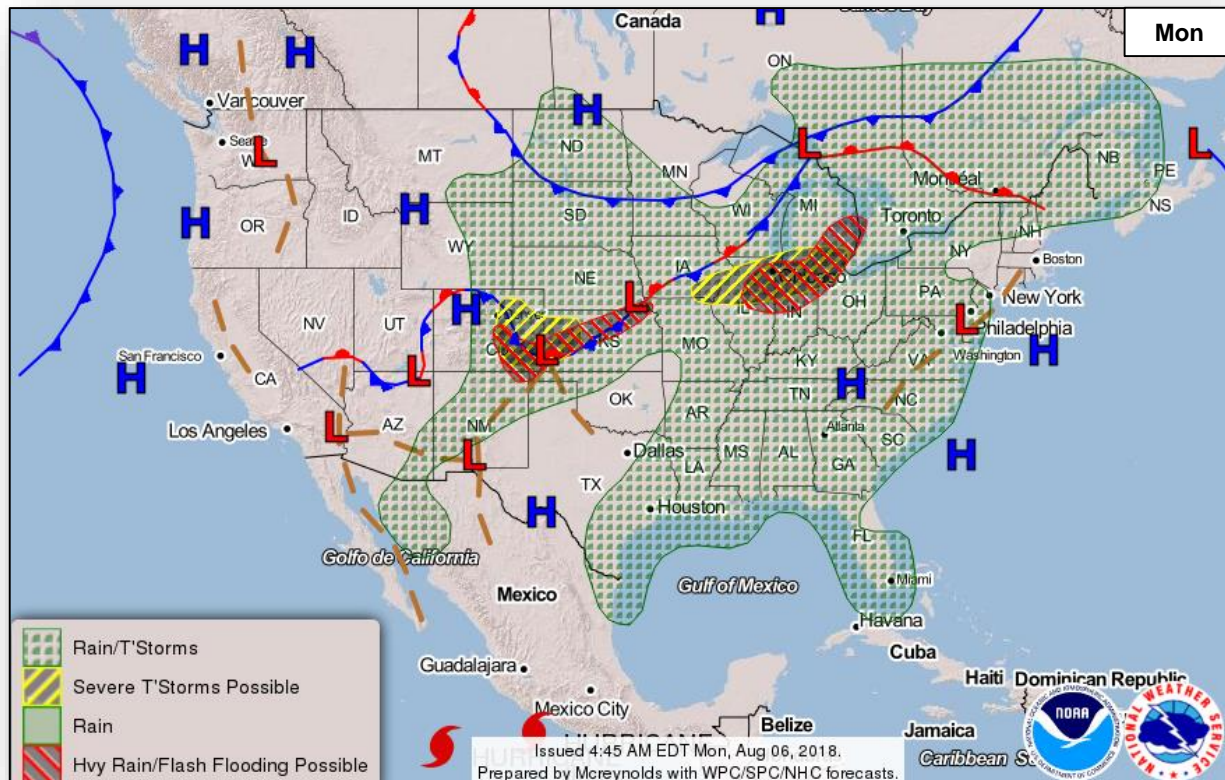
- HI EOC continues to monitor Hurricane Hector (already at Partial activation for ongoing Kilauea Volcano activity)
- FEMA Region IX IMAT-1 already deployed to HI for Kilauea volcano activity (will support Hector response if required)
- Select ESFs (1, 2, 3, 6, 7, 8, 10, 12), DCO, and LNOs activated to HIEMA/JFO
- USACE Emergency Power PRT deploying to Hilo, HI
- Two ISB teams deployed
- FEMA Region IX RWC at Steady State, but continues to monitor
- FEMA NWC continues to monitor and report, as needed



National Weather Forecast



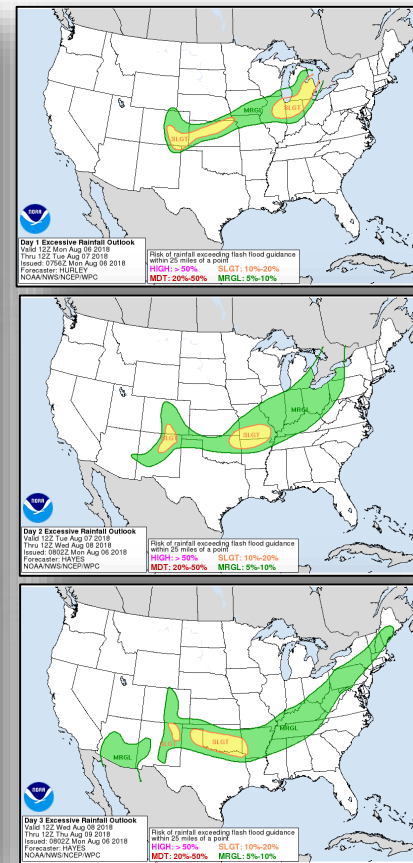
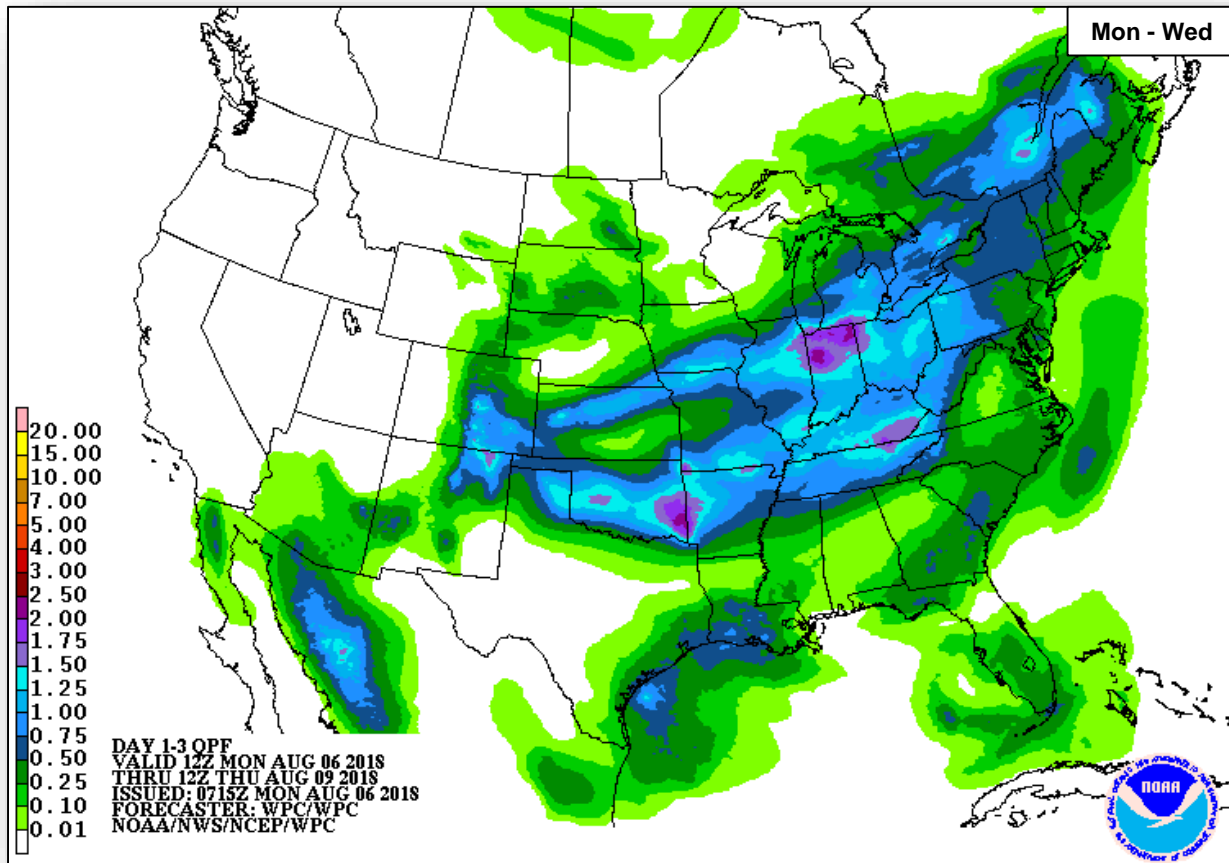
FEMA



Precipitation / Excessive Rainfall Forecast



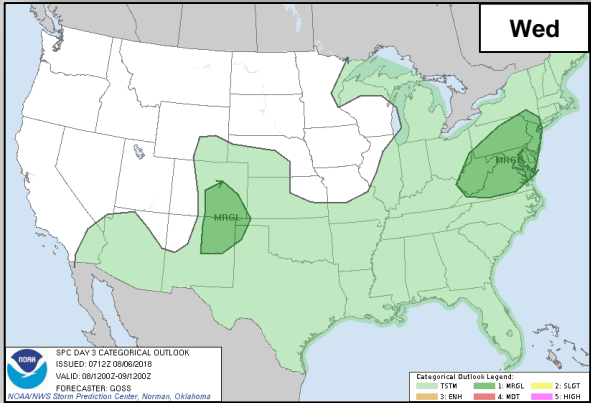
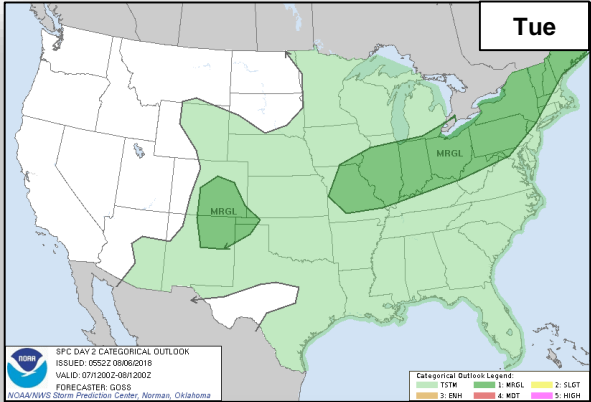
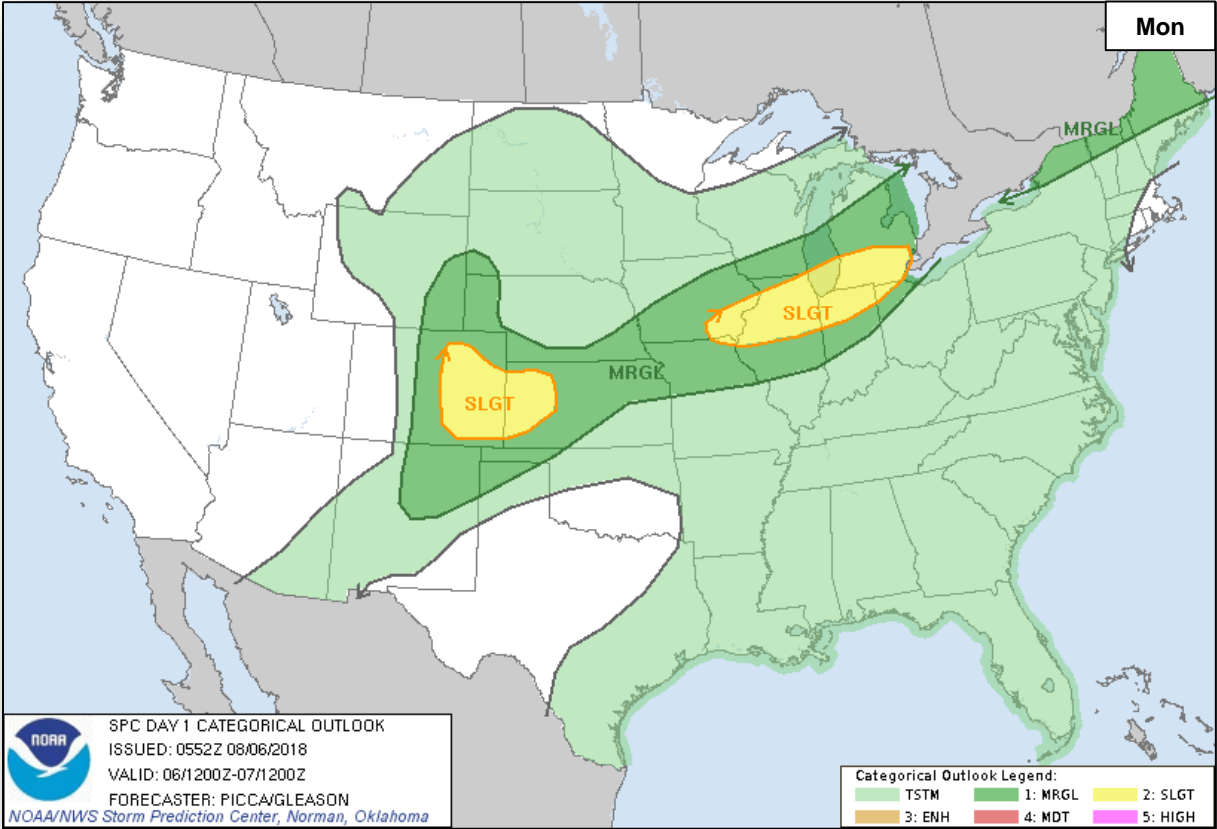
FEMA



Severe Weather Outlook



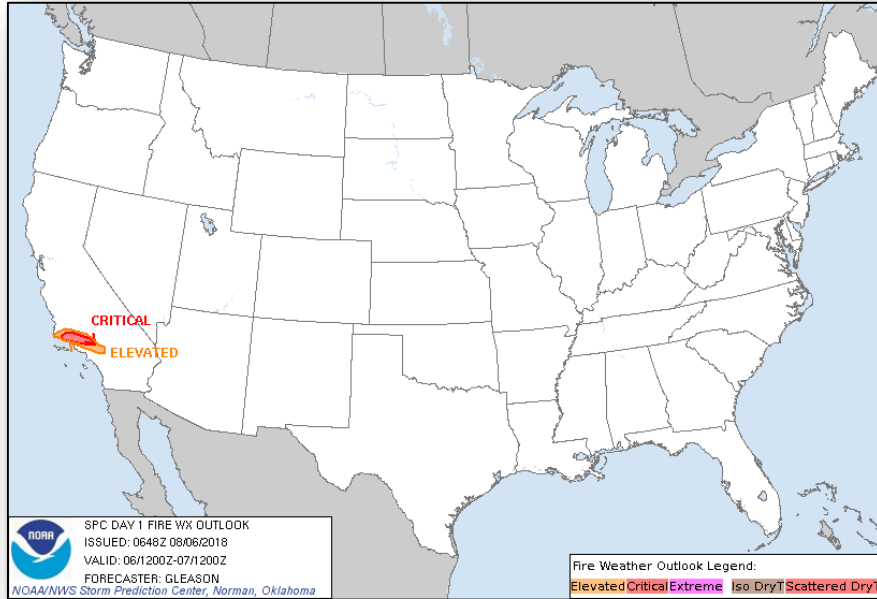
FEMA



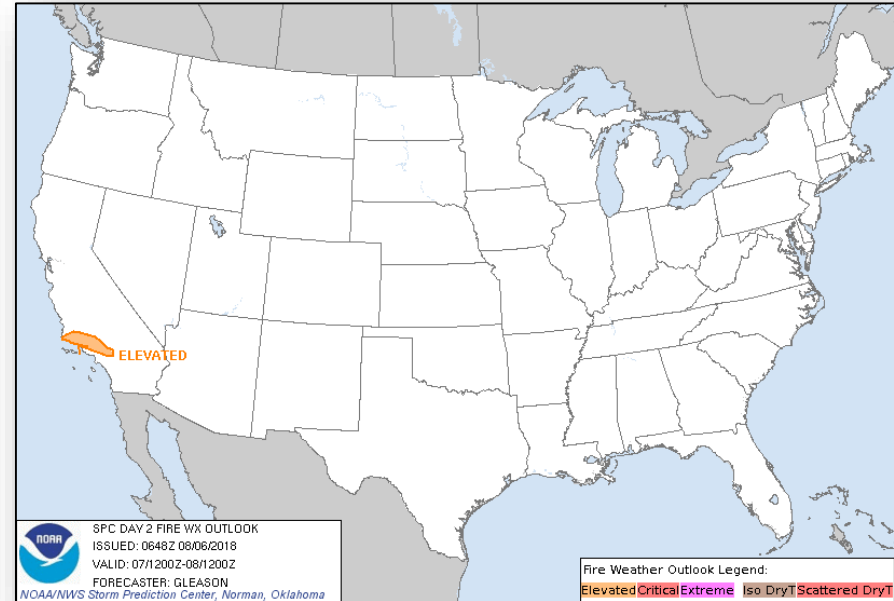
Fire Weather Outlook



FEMA



Monday

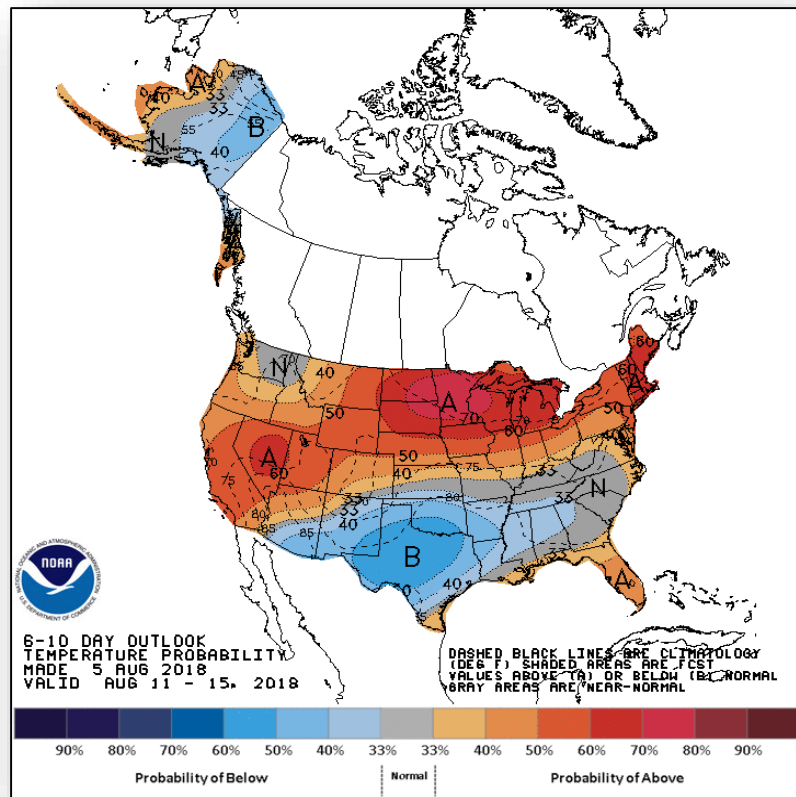


Tuesday

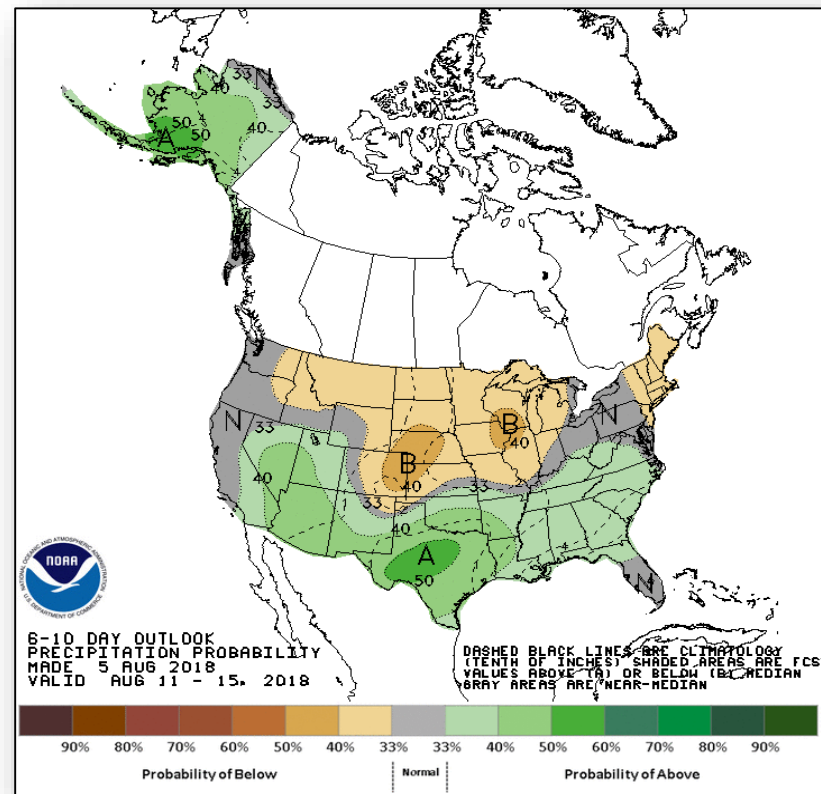
Long Range Outlooks – August 11-15



FEMA



Temperature Probability



Precipitation Probability

Joint Preliminary Damage Assessments



FEMA

Region	State / Location	Event	IA / PA	Number of Counties		Start – End
				Requested	Completed	
V	MN	Flooding June 15-July 8, 2018	IA	0	0	N/A
			PA	28 & 3 Tribes*	28 & 3 Tribes	7/19 – 8/3
VI	NM	Flooding July 5, 2018 and continuing	IA	3	3	7/31 – 8/4
			PA	0	0	N/A
VII	IA	Tornado July 19, 2018	IA	0	0	N/A
			PA	5	0	8/7 – TBD

**Red Lake Nation, White Earth Nation, and Leech Lake Band of Ojibwe*

Declaration Approved



FEMA

FEMA-4382-DR-CA

- The President approved a Major Disaster Declaration August 4, 2018 for the State of California
- For wildfires and high winds beginning July 23, 2018, and continuing
- Provides:
 - Individual and Public Assistance for Shasta County
 - Hazard Mitigation statewide
- FCO is William Roche



Disaster Requests & Declarations



FEMA

Declaration Requests in Process					Requests APPROVED (since last report)	Requests DENIED (since last report)
8	IA	PA	HM	Date Requested	1	0
SD – DR Severe Storms and Flooding		X	X	June 14, 2018		
MT – DR Flooding		X	X	June 18, 2018		
LA – DR Flooding		X	X	June 29, 2018		
AK – DR Flooding		X	X	June 28, 2018		
CT – DR Severe Storm, Tornado, and Straight-line Winds	X	X	X	July 9, 2018		
WI – DR Severe Storms, Straight-line Winds, and Flooding		X	X	July 20, 2018		
NC – DR Severe Storms, Flooding, Landslides, and Mudslides	X	X	X	July 30, 2018		
IA – DR Severe Storms, Tornadoes, Straight-Line Winds, and Flooding	X	X	X	August 1, 2018		
CA – DR Wildfires	X	X	X	August 4, 2018	Declared August 4, 2018	

Readiness – Deployable Teams and Assets



FEMA

Resource	Force Strength	Available	Deployed	Other	Cadres with 25% or Less Availability
IM Workforce	11,760 ▼	4,158 ▼ 35%	4,137 ▲	3,465	EHP 8% (32/393); ER 25% (9/36); HM 22% (214/971); OPS 20% (51/253); PA 13% (239/1,834); SEC 15% (15/102)
National IMATs* (3 Teams)	East 1: East 2: West:	B-48 Charlie B-2			
Regional IMATs (4 - 6 Teams)	Assigned: Available: PMC / NMC: Deployed:	13 5 4 4			
US&R (≥ 66%)	Assigned: Available: PMC / NMC: Deployed:	28 28 0 0			
MERS (≥ 66%)	Assigned: Available: PMC / NMC: Deployed:	36 33 (-2) 0 3 (+2)			
FCO (≤ 1 Type I)	Assigned: Available: PMC / NMC: Deployed:	33 14 1 18			
FDRC (≥ 3)	Assigned: Available: PMC / NMC: Deployed:	14 6 1 7	<p>As of 3:00 a.m. EDT August 6, 2018</p>		

* **B-2 Status:** Assemble ≤ 2-hrs, On Site ≤ 18-hrs; **B-48 Status:** Assemble and deploy ≤ 48hrs; **Charlie Status:** No team assemble time requirement

FEMA Readiness – Activation Teams



FEMA

Status		Activated Team	Activation Level	Activation Times	Reason / Comments
NWC (5 Teams)	Steady State				
NRCC (2 Teams)	Available				
HLT (1 Team)	Activated				
RWC / MOCs (10 Regions)	Steady State				
RRCCs (10 Regions)	Available				

Backup Regions: **IV, VIII, & V**



FEMA

FEMA's mission is helping people before, during, and after disasters.