



FEMA

Daily Operations Briefing

**Sunday, August 5, 2018
8:30 a.m. EDT**

Significant Activity – Aug 4-5



FEMA

Significant Events: Wildfires

Tropical Activity:

- Atlantic – Disturbance 1 – Medium (40%)
- Eastern Pacific – Hurricane Hector (CAT 3); Tropical Depression Eleven-E; Disturbance 1 – High (90%) ; Disturbance 2 – High (near 100%)
- Central Pacific – Hurricane Hector expected to cross into Central Pacific basin late Sunday or early Monday
- Western Pacific – No activity affecting U.S. interests

Significant Weather:

- Severe thunderstorms possible – Central Rockies to Great Lakes
- Flash flooding possible – Central Plains to Upper/Middle Mississippi Valley
- Elevated/critical fire weather – CA, UT, CO, WY, & ID
- Isolated dry thunderstorms – ID, MT, & WY
- Red Flag Warnings – CA, NV, AZ, & WY

Declaration Activity:

- Major Disaster Declaration approved – CA
- FMAG approved – Angel Springs Fire, WA

Carr Fire – Shasta and Trinity counties, CA



FEMA

Current Situation: Acres burned: 145k (+11k); containment: 41% (+2)

Impacts:

- Structures / Homes:
 - Threatened: 1,195 (-129) homes, 22 multiple residences, 12 commercial properties
 - Damaged: 190 (+2) homes, 25 (+2) commercial, 58 minor structures
 - Destroyed: 1,078 (+8) homes, 23 (+2) commercial, 500 (+8) minor structures

Energy:

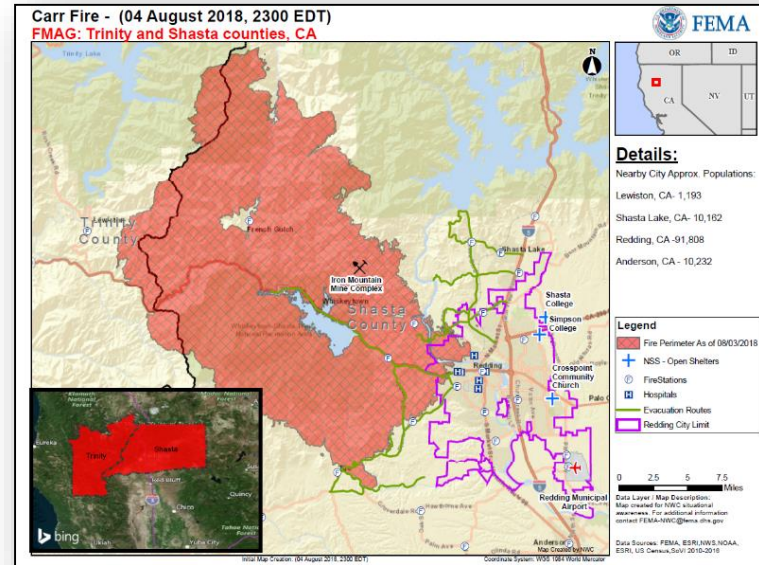
- Minimal customers without power in Shasta County; 151 customers without gas
- No immediate threat to power quality/generation or dam operations

Health and Medical:

- Fatalities / Injuries: 6 / 1
- HHS reports all major medical facilities are operational; no shortfalls identified
- 171 patients remain evacuated from skilled nursing facilities

Food, Water, and Sheltering:

- Shelters / Occupants: 3 (-1) open / 73 (-79) occupants (*ARC Midnight Shelter Count*)
- Evacuations: Mandatory evacuations in effect for 21k people (-1k)
- Surface water treatment plants remain threatened
- Staging Area established at Redding Municipal Airport
 - ISB Team and cache deployed
 - Commodities prepositioned: Cots, blankets, meals, and water



Carr Fire – Shasta and Trinity counties, CA



FEMA

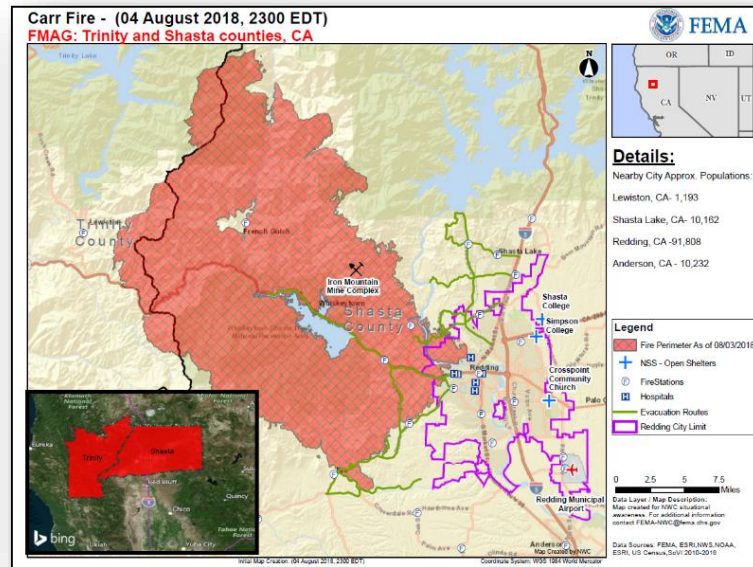
Response

State / Local Response

- CA EOC at Full Activation
- Governor declared a State of Emergency for six counties
- Major Disaster Declaration requested August 4, 2018

FEMA Response

- Major Disaster Declaration FEMA-4382-DR-CA approved August 4, 2018
- Emergency Declaration FEMA-3398-EM-CA approved July 28, 2018
- FMAG FEMA-5259-FM-CA approved July 23, 2018; Trinity County added August 2, 2018
- Region IX RWC at Steady State, continues to monitor
 - IMAT-2 and 2 LNOs deployed to CA EOC
 - ESFs 1, 3, 4, 6, 7, 12, & DCO activated
- NWC continues to monitor and report as warranted



Declaration Approved



FEMA

FEMA-4382-DR-CA

- The President approved a Major Disaster Declaration August 4, 2018 for the State of California
- For wildfires and high winds beginning July 23, 2018, and continuing
- Provides:
 - Individual and Public Assistance for Shasta County
 - Hazard Mitigation statewide
- FCO is William Roche



Mendocino Fire Complex, CA



Current Situation:

Acres burned: 229k (+72k); containment: 32% (+2)

Impacts:

- Structures / Homes:
 - Threatened: 15k (+6k) homes, 300 (+100) commercial properties
 - Damaged: 10 homes, 11 (+2) minor structures
 - Destroyed: 54 (+14) homes, 1 multiple residence, 49 (+2) minor structures
- Minimal customers without power
- Road closures remain in effect for sections of Highways 20, 29, and 175

Health and Medical:

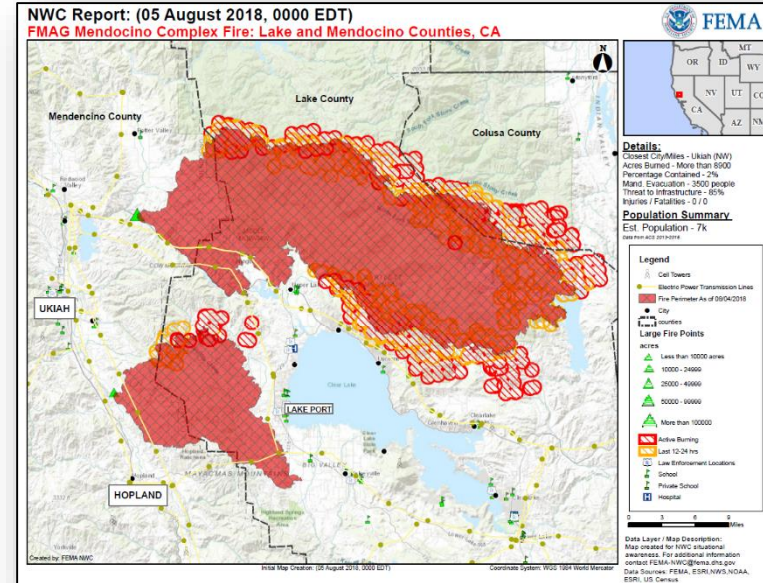
- Fatalities / Injuries: 0 / 0

Food, Water and Sheltering:

- Shelters / Occupants: 8 (+2) open / 577 (+195) occupants (*ARC Midnight Shelter Count*)
- Evacuations: Mandatory evacuations in effect for 21k (+6k) people

Response

- CA EOC at Full Activation
- Governor declared a State of Emergency for six counties
- FMAG FEMA-5262-FM-CA approved July 28, 2018
- Region IX at Steady State, continues to monitor
 - IMAT-2 and 2 LNOs deployed to CA EOC
 - ESFs 1, 3, 4, 6, 7, 12, & DCO activated
- NWC continues to monitor and report as warranted



Angel Springs Fire – Lincoln County, WA



FEMA

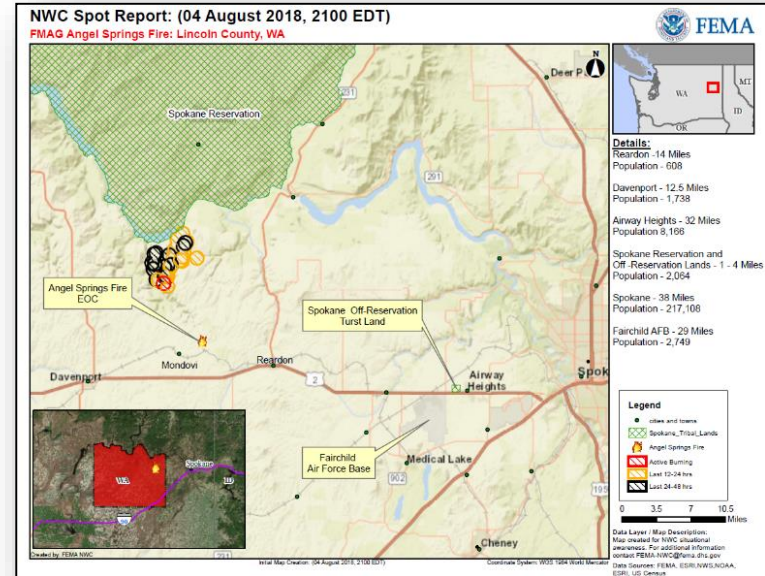
Fire Name (County)	FMAG Number	Acres Burned	Percent Contained	Evacuations (Residents)	Structures			Fatalities / Injuries
					Threatened	Damaged	Destroyed	
Angel Springs Fire (Lincoln)	XXXX-FM-WA	4,700	0%	Mandatory & Voluntary	200 homes	0	3 (2 homes)	0 / 0

Current Situation

- Fire began August 2, 2018 and is burning on State, private, and tribal land
- Burning near multiple communities (combined pop. 800)
- Threatening:
 - 200 homes (84% primary homes, 16% secondary homes)
 - Large scale utilities and major infrastructure including dams and reservoirs
- Mandatory and voluntary evacuations in effect for 400 people
- Fire crossed the Spokane River onto the Spokane Tribal reservation but the reservation is not part of this FMAG
- FMAG approved August 4, 2018

Response

- WA EOC at Partial Activation
- Governor declared a state of emergency for the entire State (wildfire danger)
- FEMA Region X at Steady State, continues to monitor



Wildfire Summary



FEMA

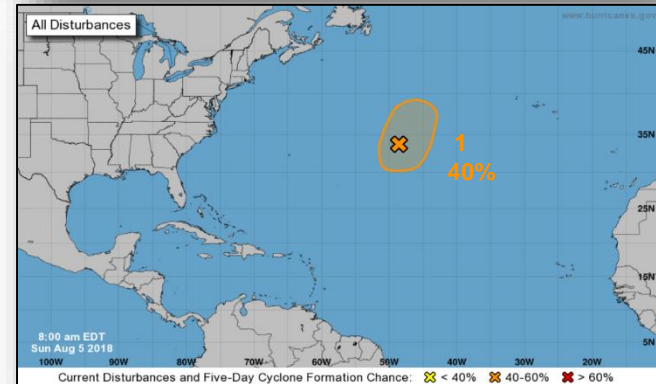
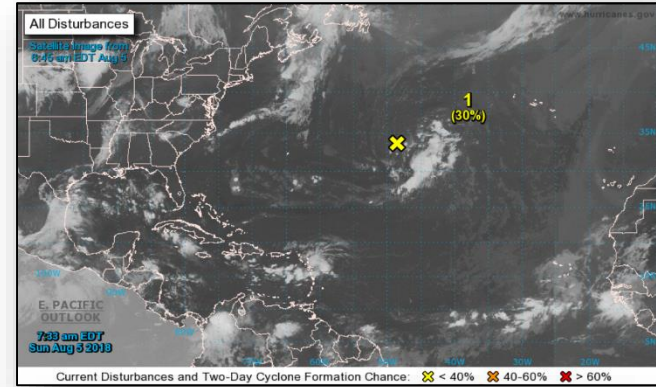
Fire Name (County)	FMAG Number	Acres Burned	Percent Contained	Evacuations (Residents)	Structures			Fatalities / Injuries
					Threatened	Damaged	Destroyed	
Oregon (1)								
South Valley (Wasco)	5265-FM-OR	20,026 (-1,649)	40% (+15)	Voluntary	172 homes	0	18 (+4) (3 homes)	0 / 0

Tropical Outlook – Atlantic



Disturbance 1 (as of 8:00 a.m. EDT)

- 1,000 miles WSW of the Azores, moving very little
- Conditions expected to become marginally conducive to acquire subtropical or tropical characteristics over the next day or two
- Formation chance through 48 hours: Low (30%)
- Formation chance through 5 days: Medium (40%)



Tropical Outlook – Eastern Pacific

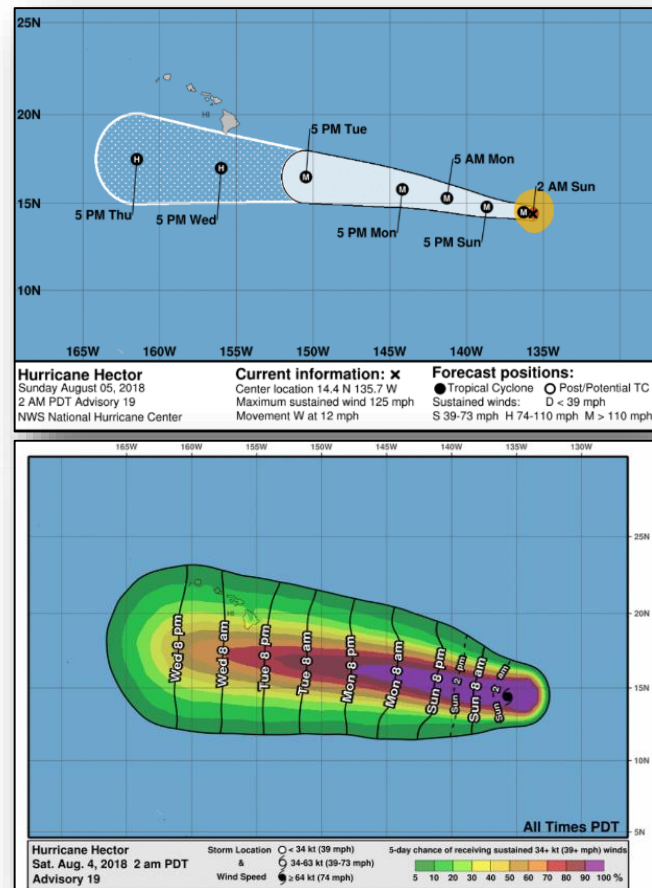


Hurricane Hector (CAT 3) (Advisory #19 as of 5:00 a.m. EDT)

- 1,360 miles E of South Point, Hawaii
- Moving W at 12 mph
- Maximum sustained winds 125 mph
- Hurricane-force winds extend 30 miles; tropical storm force winds extend 105 miles
- No coastal watches or warnings in effect
- Expected to remain a major hurricane as it moves into the Central Pacific basin Sunday night or early Monday

Preparations

- HI EOC continues to monitor Hurricane Hector (already at Partial activation for ongoing Kilauea Volcano activity)
- FEMA Region IMAT-1 already deployed to HI for Kilauea volcano activity (will support Hector response if required)
- Select ESFs (1, 2, 3, 6, 7, 8, 10, 12), DCO, and LNOs activated to HIEMA/JFO
- USACE Emergency Power PRT deploying to Hilo, HI
- Two ISB teams deploying to HI (ETA: Aug 5)
- FEMA Region IX RWC at Steady State, but continues to monitor
- FEMA NWC continues to monitor and report, as needed



Tropical Outlook – Eastern Pacific



Tropical Depression Eleven-E (Advisory #3 as of 5:00 a.m. EDT)

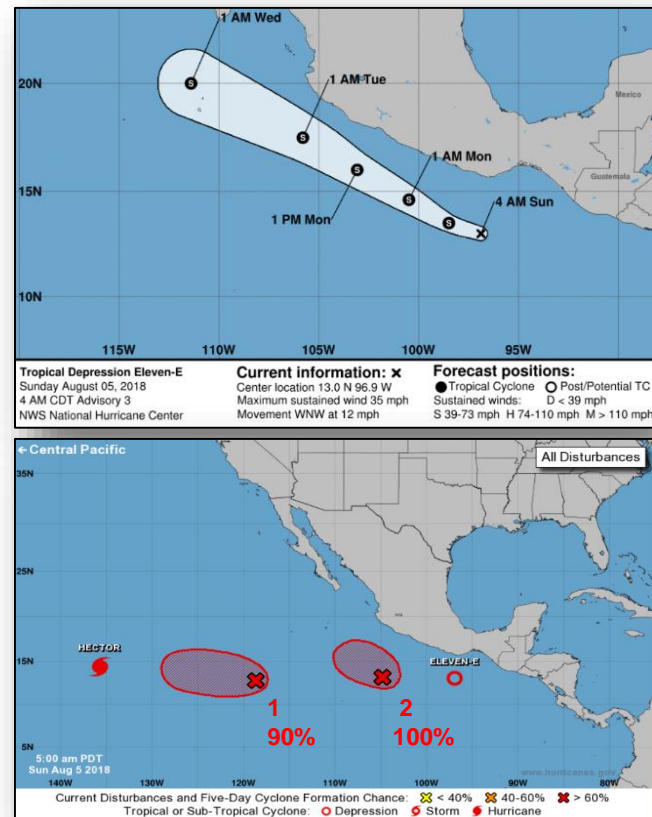
- 190 miles S of Puerto Angel, Mexico
- Moving WNW at 12 mph
- Maximum sustained winds 35 mph
- Expected to become a tropical storm later today

Disturbance 1 (as of 8:00 a.m. EDT)

- 900 miles SW of the southern tip of Baja California peninsula
- Tropical depression is expected to form in the next day or two
- Formation chance through 48 hours: High (70%)
- Formation chance through 5 days: High (90%)

Disturbance 2 (as of 8:00 a.m. EDT)

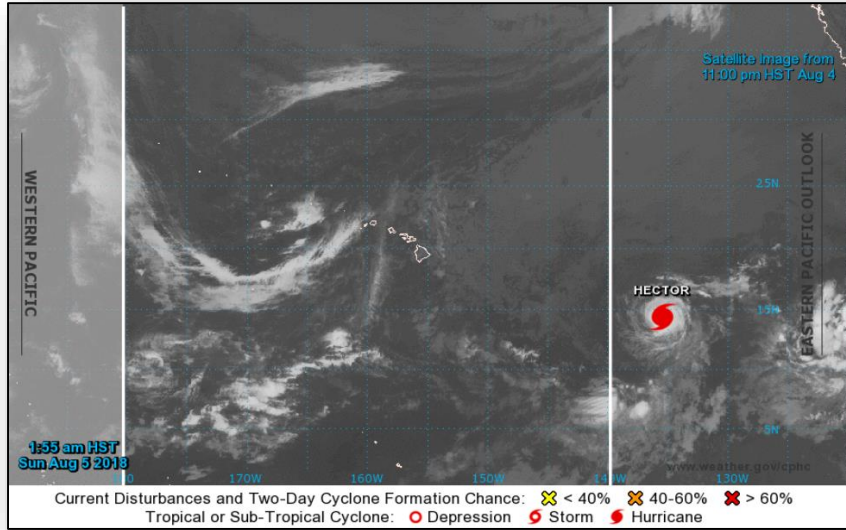
- 400 miles SW of Acapulco, Mexico
- Tropical depression likely to form later today or tonight
- Formation chance through 48 hours: High (90%)
- Formation chance through 5 days: High (near 100%)



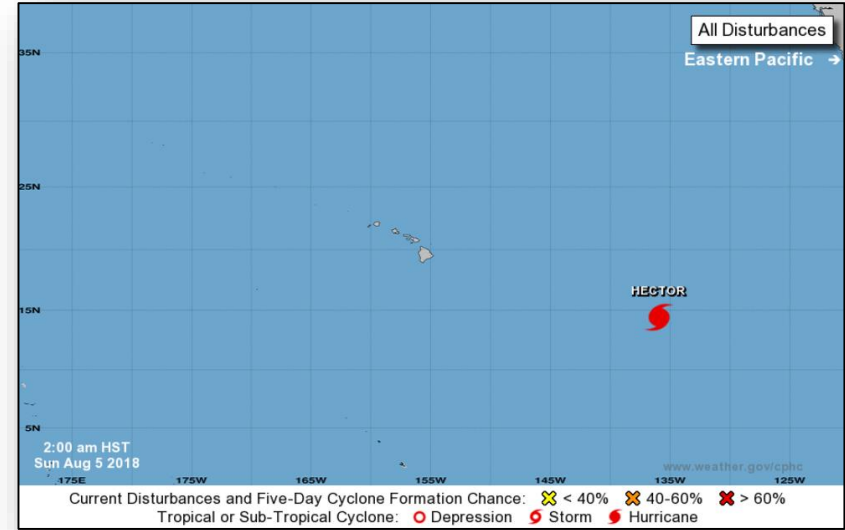
Tropical Outlook – Central Pacific



FEMA

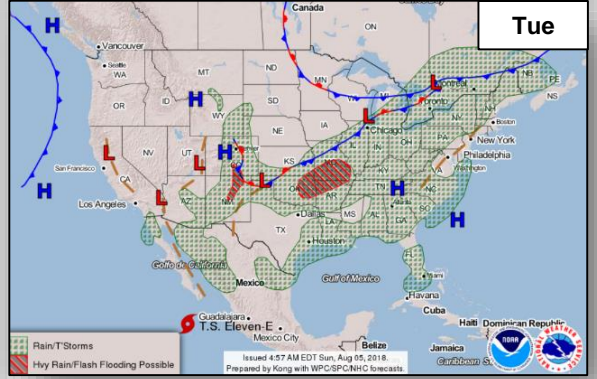
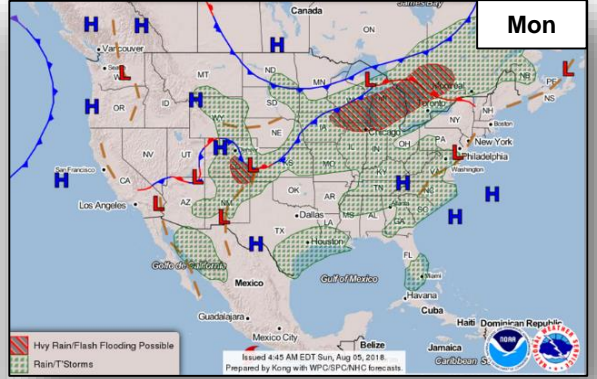
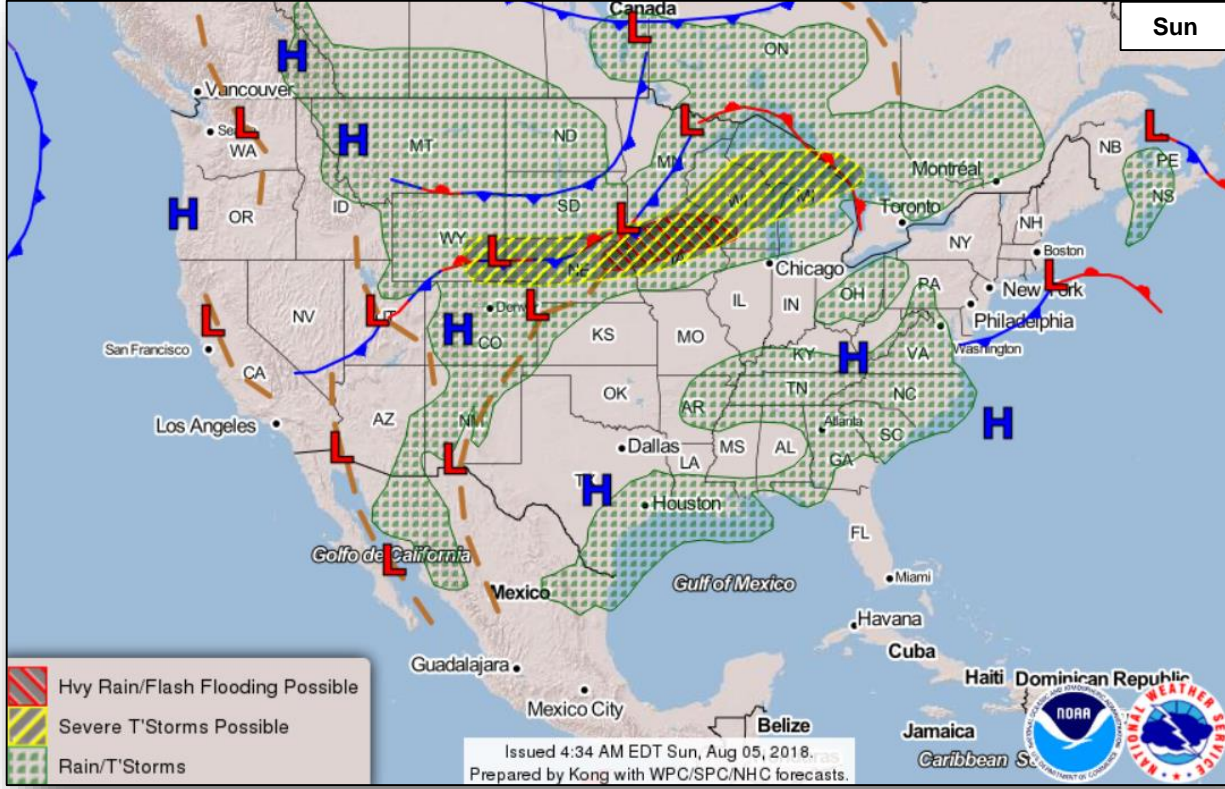


48 Hour Outlook



5 Day Outlook

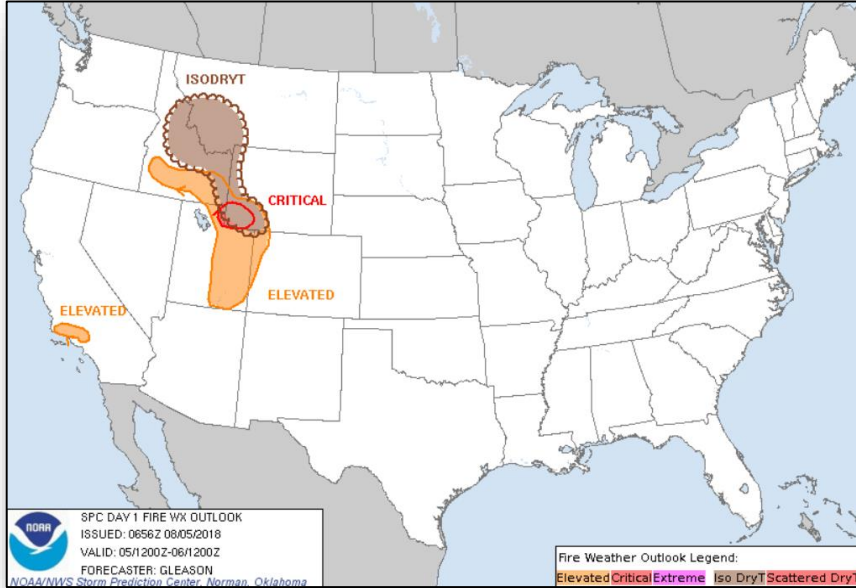
National Weather Forecast



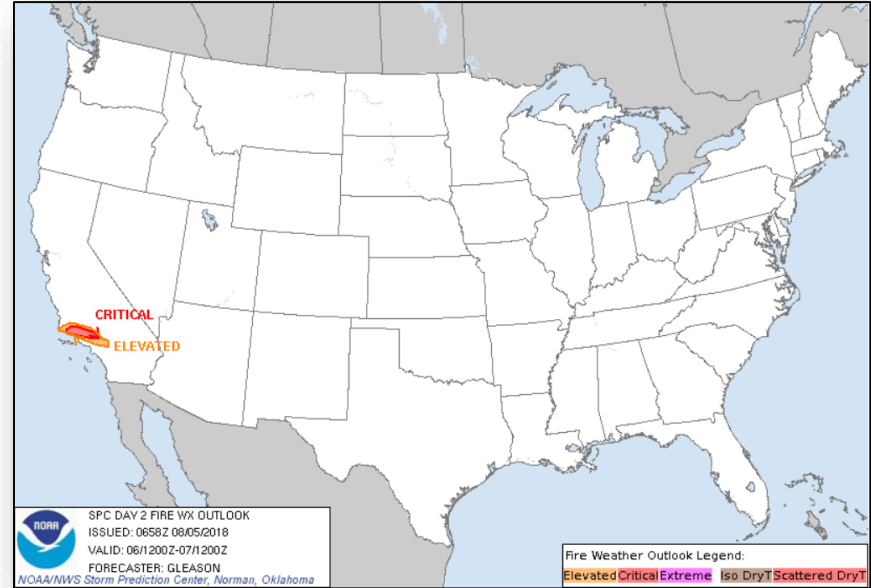
Fire Weather Outlook



FEMA



Sunday

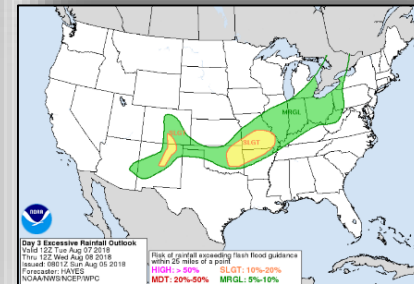
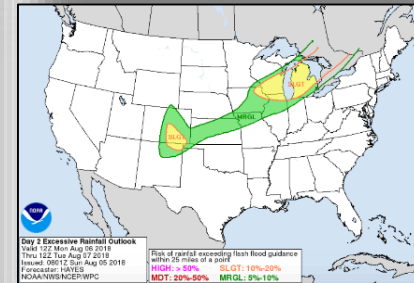
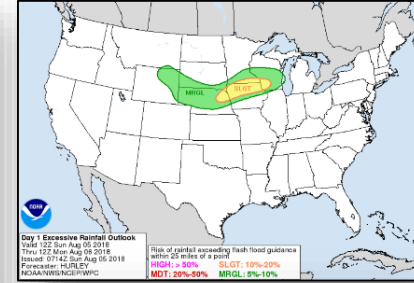
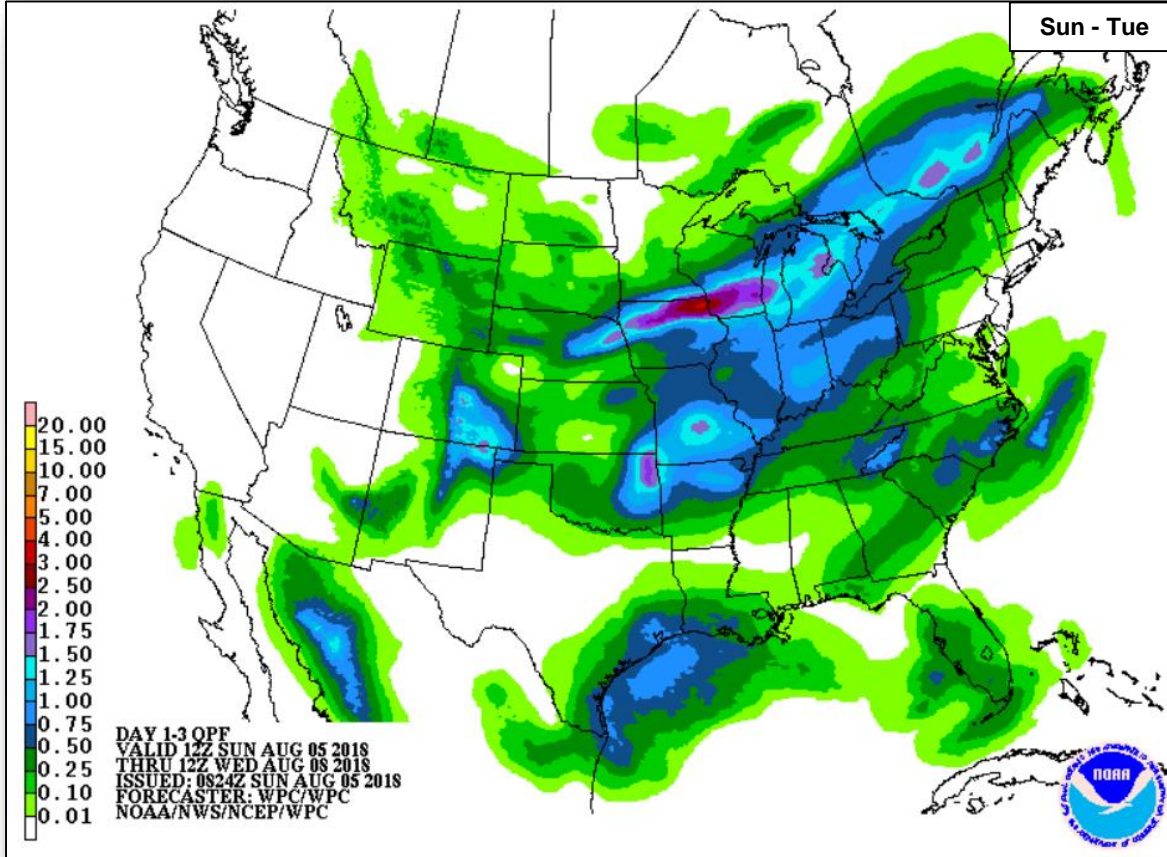


Monday

Precipitation / Excessive Rainfall Forecast



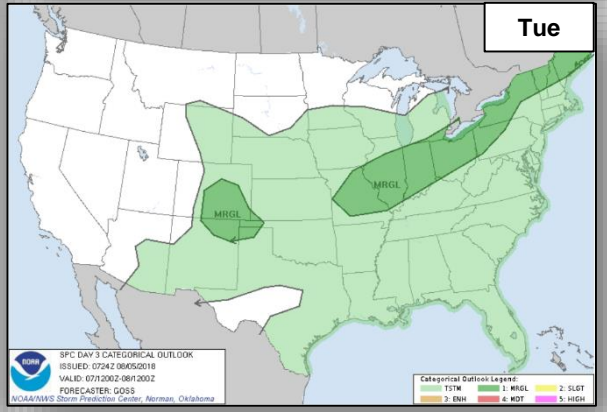
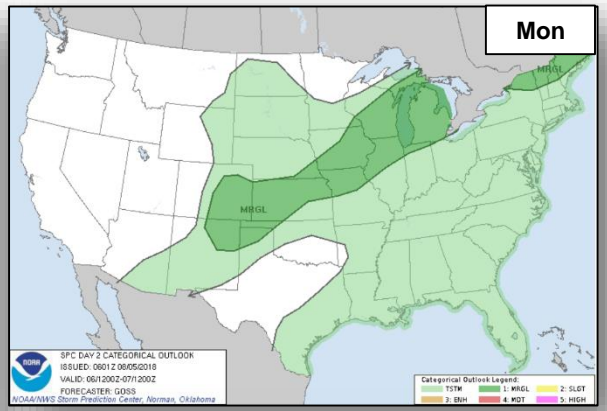
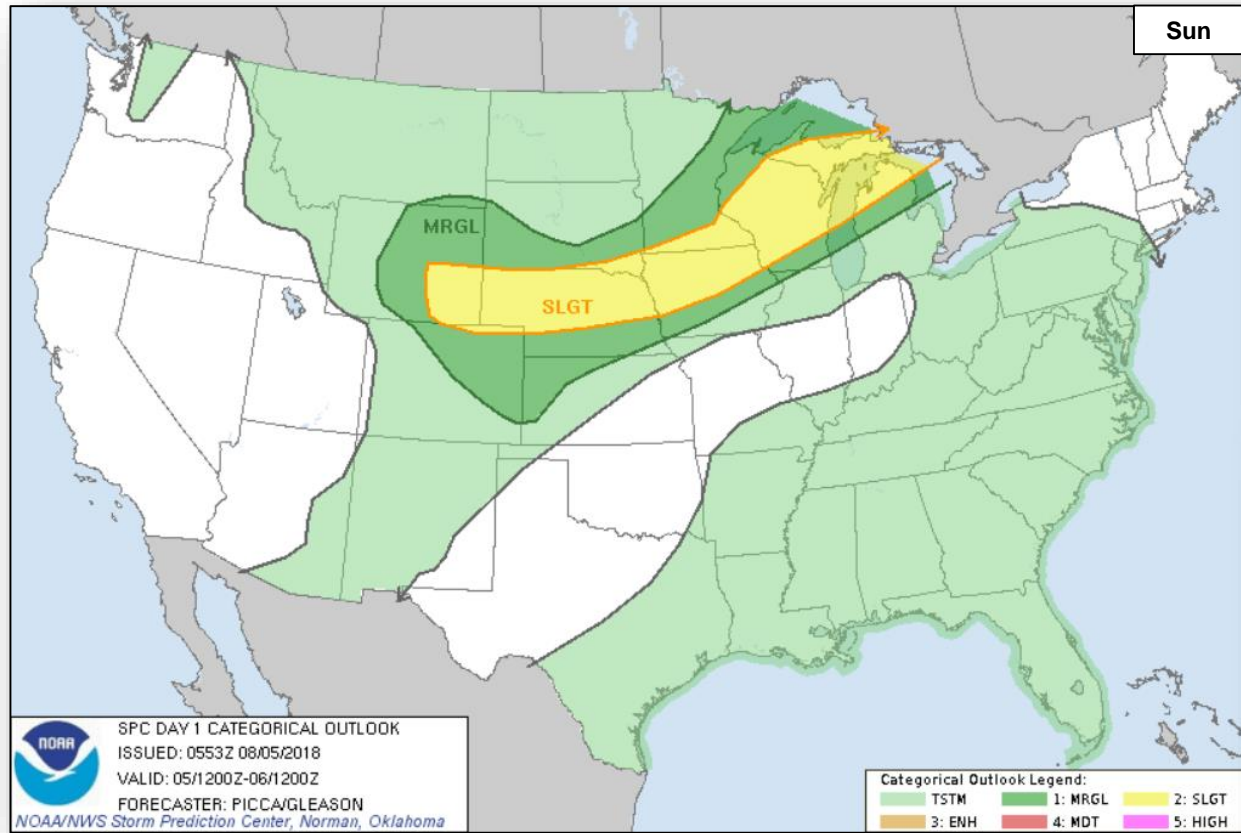
FEMA



Severe Weather Outlook



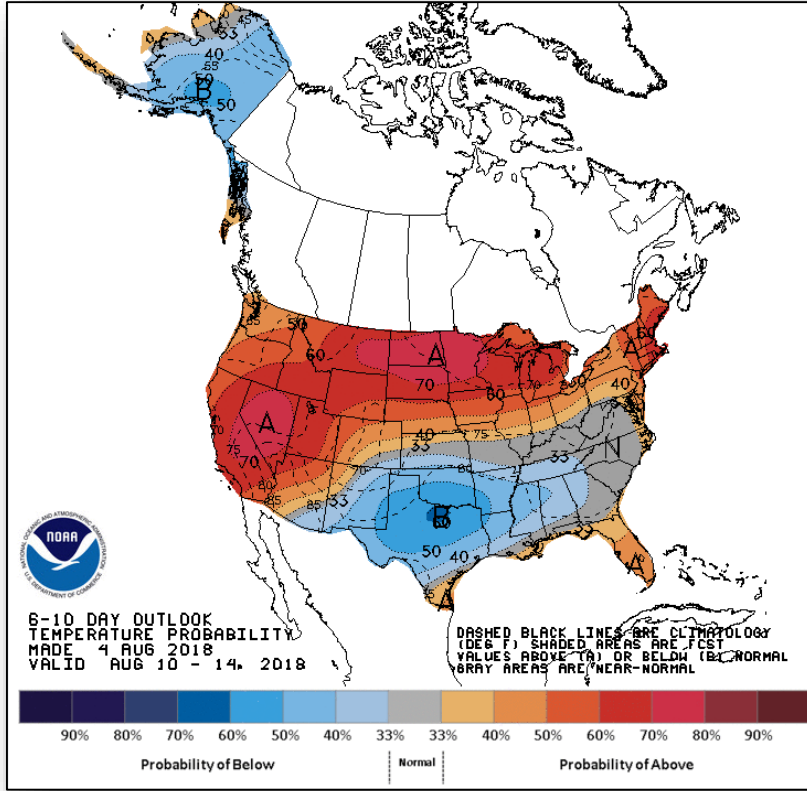
FEMA



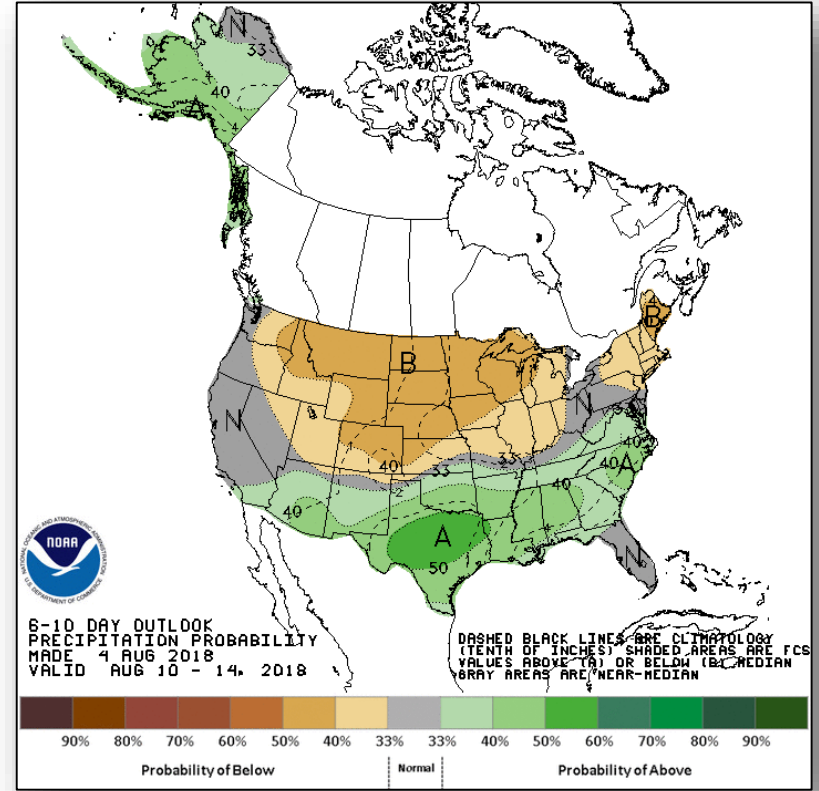
Long Range Outlooks – August 10-14



FEMA



Temperature Probability



Precipitation Probability

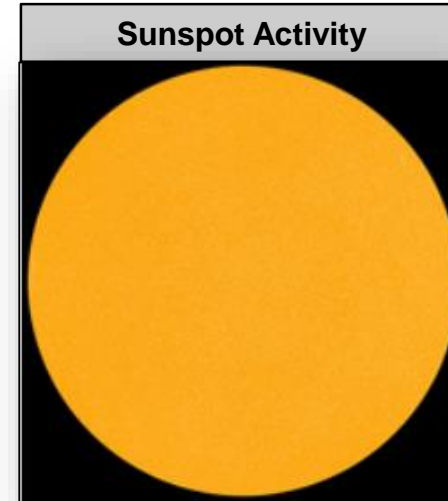
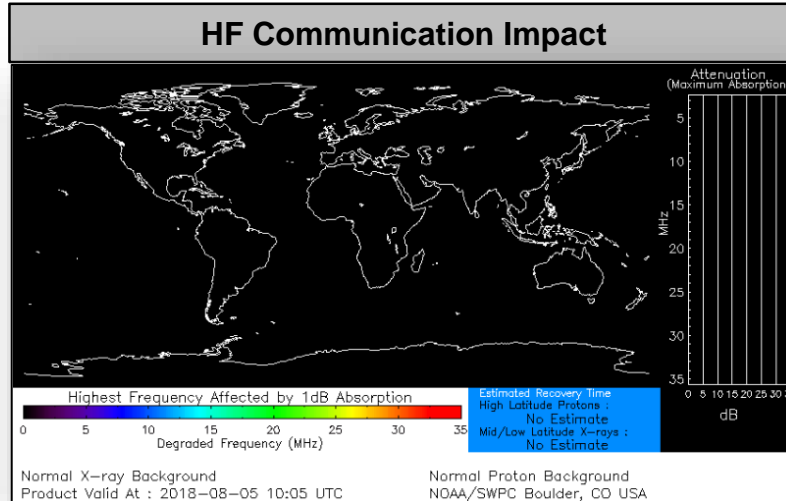
Space Weather



FEMA

	Space Weather Activity	Geomagnetic Storms	Solar Radiation	Radio Blackouts
Past 24 Hours	None	None	None	None
Next 24 Hours	None	None	None	None

For further information on NOAA Space Weather Scales refer to: <http://www.swpc.noaa.gov/noaa-scales-explanation>



Joint Preliminary Damage Assessments



FEMA

Region	State / Location	Event	IA / PA	Number of Counties		Start – End
				Requested	Completed	
V	MN	Flooding June 15-July 8, 2018	IA	0	0	N/A
			PA	28 & 3 Tribes*	28 & 3 Tribes	7/19 – 8/3
VI	NM	Flooding July 5, 2018 and continuing	IA	3	3	7/31 – 8/4
			PA	0	0	N/A
VII	IA	Tornado July 19, 2018	IA	0	0	N/A
			PA	5	0	8/7 – TBD

*Red Lake Nation, White Earth Nation, and Leech Lake Band of Ojibwe

Disaster Requests & Declarations



FEMA

Declaration Requests in Process					Requests APPROVED (since last report)	Requests DENIED (since last report)
8	IA	PA	HM	Date Requested	1	0
SD – DR Severe Storms and Flooding		X	X	June 14, 2018		
MT – DR Flooding		X	X	June 18, 2018		
LA – DR Flooding		X	X	June 29, 2018		
AK – DR Flooding		X	X	June 28, 2018		
CT – DR Severe Storm, Tornado, and Straight-line Winds	X	X	X	July 9, 2018		
WI – DR Severe Storms, Straight-line Winds, and Flooding		X	X	July 20, 2018		
NC – DR Severe Storms, Flooding, Landslides, and Mudslides	X	X	X	July 30, 2018		
IA – DR Severe Storms, Tornadoes, Straight-Line Winds, and Flooding	X	X	X	August 1, 2018		
CA – DR Wildfires	X	X	X	August 4, 2018	Declared August 4, 2018	

Readiness – Deployable Teams and Assets



FEMA

Resource	Force Strength	Available	Deployed	Other	Cadres with 25% or Less Availability	
IM Workforce	11,771 Ⓢ	4,206 ▲ 36%	4,087 ▼	3,478	EHP 8% (32/393); ER 25% (9/36); HM 22% (216/971); OPS 18% (46/253); PA 13% (244/1,837); SAF 25% (13/53); SEC 16% (16/102)	
National IMATs* (3 Teams)	East 1:	B-48				
	East 2:	Charlie				
Regional IMATs (4 - 6 Teams)	West:	B-2				
	Assigned:	13				
US&R (≥ 66%)	Available:	5				
	PMC / NMC:	4				
MERS (≥ 66%)	Deployed:	4				
	Assigned:	28				
FCO (≤ 1 Type I)	Available:	28				
	PMC / NMC:	0				
FDRC (≥ 3)	Deployed:	0				
	Assigned:	36				
		35				
		0				
		1				
		33				
		14				
		1				
		18				
		14				
		6				
		1				
		7				

* **B-2 Status:** Assemble ≤ 2-hrs, On Site ≤ 18-hrs; **B-48 Status:** Assemble and deploy ≤ 48hrs; **Charlie Status:** No team assemble time requirement

FEMA Readiness – Activation Teams



Status		Activated Team	Activation Level	Activation Times	Reason / Comments
NWC (5 Teams)	Steady State				
NRCC (2 Teams)	Available				
HLT (1 Team)	Activated				
RWC / MOCs (10 Regions)	Steady State				
RRCCs (10 Regions)	Available				

Backup Regions: **VIII, IV, & X**



FEMA

FEMA's mission is helping people before, during, and after disasters.