



FEMA

Daily Operations Briefing

**Sunday, July 29, 2018
8:30 a.m. EDT**

Significant Activity – July 28-29



FEMA

Significant Events: Carr Fire, CA

Tropical Activity:

- Atlantic – Tropical cyclone activity is not expected during the next 48 hours
- Eastern Pacific – Tropical Depression Gilma; Disturbance 1 – Medium (50%)
- Central Pacific – Disturbance 1 (remnants of former Depression Nine-E) – Low (near 0%)
- Western Pacific – No activity affecting U.S. interests

Significant Weather:

- Severe thunderstorms possible – Central Plains
- Flash flooding possible – Central and Southern Plains; Middle Mississippi Valley; coastal Carolinas
- Critical and elevated Fire weather – ID, UT, CO & WY
- Red Flag Warnings – WA, CA, UT, CO and WY

Declaration Activity:

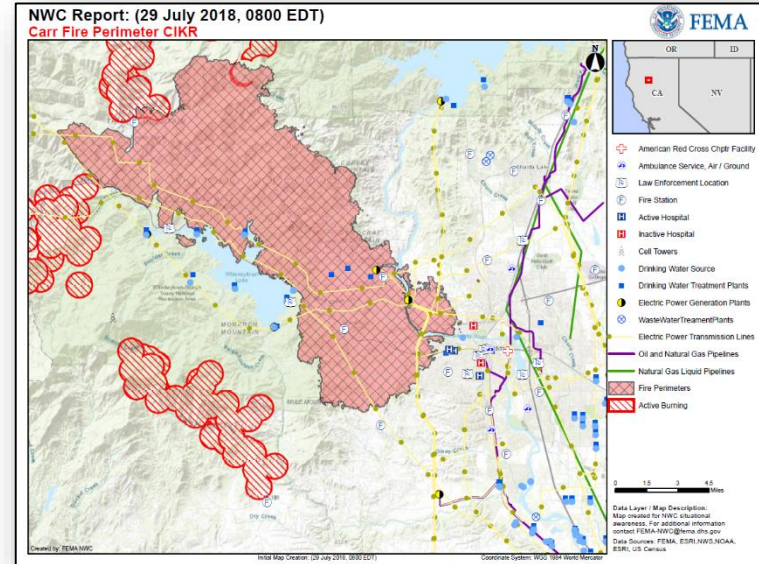
- Emergency Declaration approved – California
- FMAGs approved – River Fire, CA and Grassy Ridge Fire, ID

Carr Fire – Shasta County, CA



Current Situation

- Fire progression in Redding has slowed; however, extreme fire behavior continues
- Fatalities/Injuries: 2 confirmed (media reports up to 5) / 0
- Acres burned: 83,800 (+35,488); Containment: 5% (NC)
- Structures/homes:
 - Threatened: 4,978 homes, 22 multiple residences, 12 nonresidential commercial
 - Damaged: 117 homes (+42), 2 (+2) mixed commercial/residential, 4 (+2) nonresidential commercial, 19 (+16) minor structures
 - Destroyed: 500 homes, 2 nonresidential commercial, 96 (+83) minor structures
- Evacuations: Mandatory for approximately 39k (+2k) people
- Hospitals: One hospital partially evacuated (neo-natal patients); all other evacuations were deemed unnecessary; Trinity Hospital in Weaverville is on generator power
- Shelters/Occupants: 5 (+2) open / 797 (+175) occupants (ARC Midnight Shelter Count as of 6:41 am EDT)
- Infrastructure:
 - Power outages: 4k customers*; Gas outages: 170 (+20) customers
 - Power grid is stable with excess capacity
 - Trinity Power Plant evacuated due to emergency water release
 - Shasta, Keswick, Carr and Clear Creek Dam operations and facility communications are down and these facilities have been evacuated
 - Power lines down at Keswick and Shasta hydro-electric dams; arranging for generators to help restore service to Shasta Dam
 - 220V lines carrying power to Trinity and Humboldt counties are threatened



(*As of 8:00 am EDT. Customer outage data is provided by the Department of Energy's EAGLE-I system. Comprehensive National coverage of all electrical service providers is not available.)

Carr Fire – Shasta County, CA



Current Situation (continued)

- Transportation:
 - [Amtrak passenger service resumed service between Sacramento, CA and Klamath Falls, OR](#)

State / Local Response

- CA EOC at Full Activation; Southern REOC at Partial Activation (day shift only)
- Governor declared a State of Emergency for 6 counties (Shasta, Riverside, Mariposa, [Lake, Mendocino and Napa](#))
- Governor requested an Emergency Declaration (for emergency protective services) on July 27, 2018

FEMA Response

- [Emergency Declaration FEMA-3398-EM-CA was approved on July 28, 2018](#)
- FMAG FEMA-5259-FM-CA was approved on July 23, 2018
- Region IX RWC at Steady State, continues to monitor
 - IMAT-2 deployed to CA EOC
 - LNOs deployed to CA EOC and Shasta County EOC
 - ESFs 1, 3, 4, 6, 7, 8, 12 & DCO activated
- FSA at Redding Municipal Airport
 - ISB Team Alpha deployed to FSA
 - Prepositioned 1 ISB cache (5k cots, 5k blankets, 30k meals, and 45k liters of water)
- NWC has rostered (but not activated) the Enhanced Watch

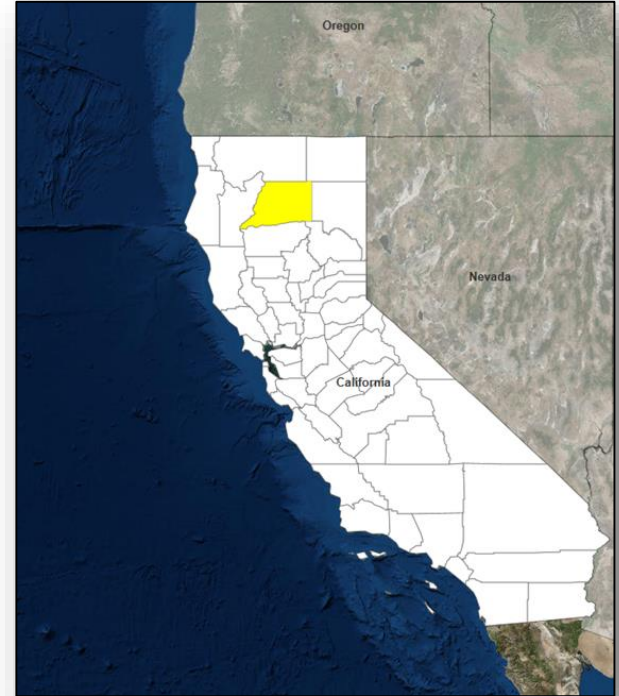
Declaration Approved



FEMA

FEMA-3398-EM-CA

- On July 28, 2018, an Emergency Declaration was approved for the State of California
- As a result of a wildfire beginning July 23, 2018, and continuing
- Provides:
 - Emergency protective measures (Category B), limited to direct Federal Assistance under the Public Assistance program at 75% federal funding, for Shasta County
- The FCO is William Roche



■ PA

A	B	C	D	E	F	G	H
Debris Removal	Emergency Protective Measures	Road Systems & Bridges	Water Control Facilities	Public Buildings & Contents	Public Utilities	Parks, Recreational Areas & Other Facilities	Fire Management

River Fire – CA



FEMA

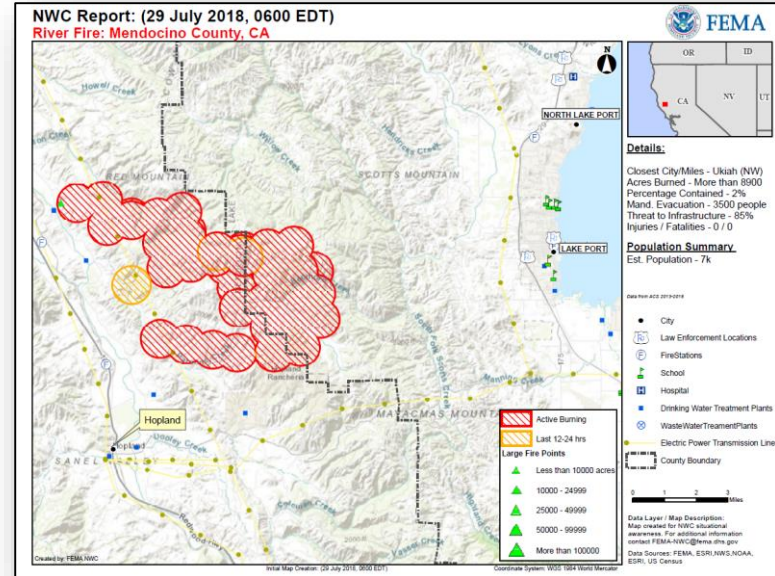
Fire Name (County)	FMAG # / Approved	Acres burned	Percent Contained	Evacuations (Residents)	Structures			Fatalities / Injuries
					Threatened	Damaged	Destroyed	
River Fire (Mendocino & Lake counties)	XXXX-FM-CA July 28, 2018	8,910	2%	Mandatory	1,481 (1,394 homes)	0	0	0 / 0

Current Situation

- Fire began July 27, 2018 and is burning on State and private land in and around the communities of Hopland and Lakeport (combined population 6,800)
- Threatening 1,394 homes (85% are primary homes; 15% are secondary homes)
- Also threatening 87 businesses, infrastructure, utilities and watershed
- Mandatory evacuations in effect for approximately 3,500 people
- 2 shelters open with 176 occupants (*ARC Midnight Shelter Count as of 6:41 am EDT*)

Response

- CA EOC at Full Activation (wildfires)
- Governor declared a state of emergency for 6 counties (Lake, Mendocino, Napa, Shasta, Riverside and Mariposa)
- Region IX at Steady State, but continues to monitor
 - IMAT-2 deployed to CA EOC
 - LNO deployed to CA EOC
- NWC has rostered (but not activated) an Enhanced Watch



Grassy Ridge Fire – ID



FEMA

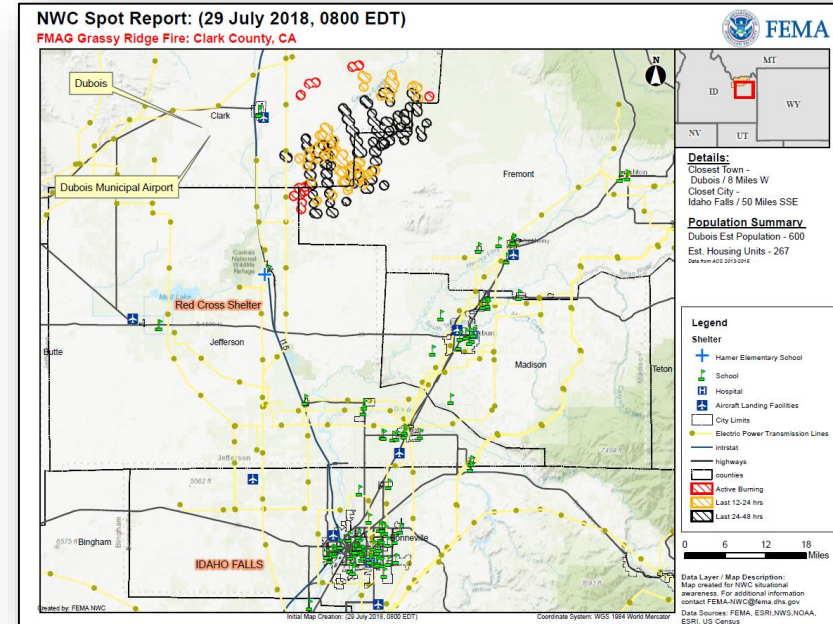
Fire Name (County)	FMAG # / Approved	Acres burned	Percent Contained	Evacuations (Residents)	Structures			Fatalities / Injuries
					Threatened	Damaged	Destroyed	
Grassy Ridge Fire (Clark County)	XXXX-FM-ID July 29, 2018	117,000	20%	Mandatory	228 homes	0	0	0 / 0

Current Situation

- Fire began July 26, 2018 and is burning on federal, state, and private land in and around the community of Dubois (population 600)
- Dubois is located 50 miles northwest of Idaho Falls (population 60k)
- Threatening 228 homes (223 are primary homes; 5 are secondary homes)
- Also threatening Dubois Municipal Airport, local schools, churches, Clark County buildings, power lines, railroad tracks, and an experimental station owned by the U.S. Department of Agriculture, and Interstate 15 (major north and south corridor)
- Mandatory evacuations in effect for approximately 600 people
- 1 shelter open with 75 occupants (*FEMA Region X*)

Response

- ID EOC at Normal Operations
- Region X at Steady State, but continues to monitor



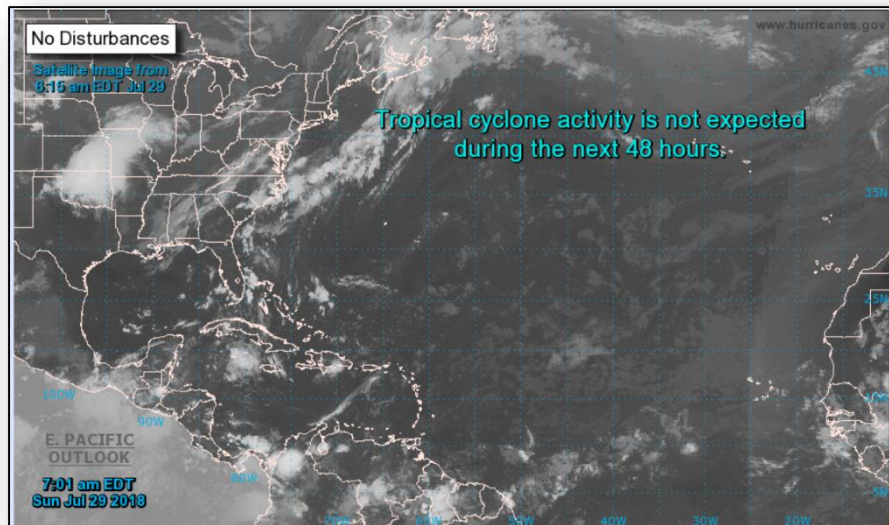
Wildfire Summary



FEMA

Fire Name (County)	FMAG Number	Acres Burned	Percent Contained	Evacuations (Residents)	Structures			Fatalities / Injuries
					Threatened	Damaged	Destroyed	
Oregon (1)								
Garner Complex (Josephine & Jackson)	5256-FM-OR	29,039 (+3,942)	30% (+3)	Mandatory	1,588 (785 homes)	0	0	0 / 24 (+2)
Washington (1)								
Chelan Hills (Douglas)	XXXX-FM-OR	1,842 (+642)	40% (+40)	Lifted	100 (+286) homes	4 (+4) homes	0	0 / 2 (+2)
California (2)								
Carr (Shasta)	5259-FM-CA	83,800 (+35,488)	5%	Mandatory	5,012 (5,000 homes)	142 (+63) (117 homes)	598 (+83) (500 homes)	2 / 0
Cranston (Riverside)	5260-FM-CA	13,118 (+818)	29% (13%)	Mandatory	4,927 (4,830 homes)	5 homes	0	0 / 2

Tropical Outlook – Atlantic



48 Hour Outlook



5 Day Outlook

Tropical Outlook – Eastern Pacific

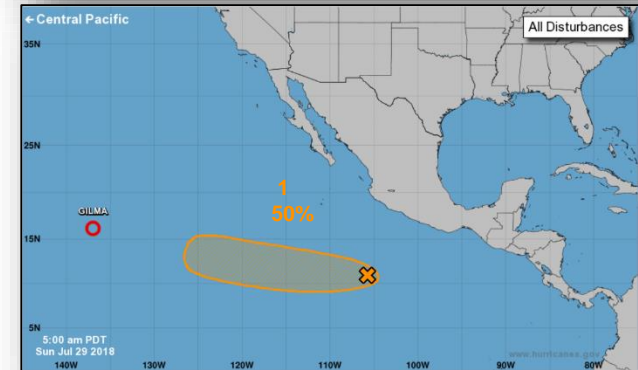
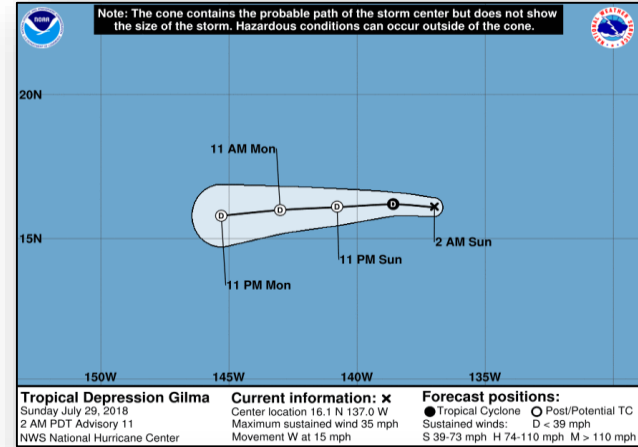


Tropical Depression Gilma (Advisory # 11 as of 5:00 a.m. EDT)

- Located 1,215 miles E of Hilo, HI
- Moving W at 15 mph
- Maximum sustained winds 35 mph
- Forecast to become a remnant low later today or tonight and dissipate entirely within a few days
- No coastal watches or warnings in effect

Disturbance 1 (as of 8:00 a.m. EDT)

- Located 650 miles SSE of Manzanillo, Mexico
- Moving W to WNW
- Conditions appear conducive for gradual development
- Could become tropical depression during next few days
- Formation chance through 48 hours: Low (30%)
- Formation chance through 5 days: Medium (50%)

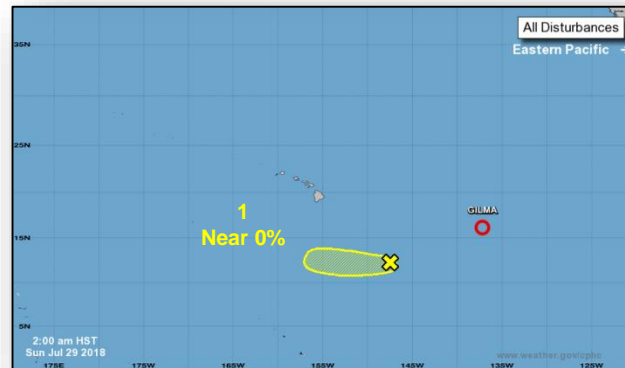
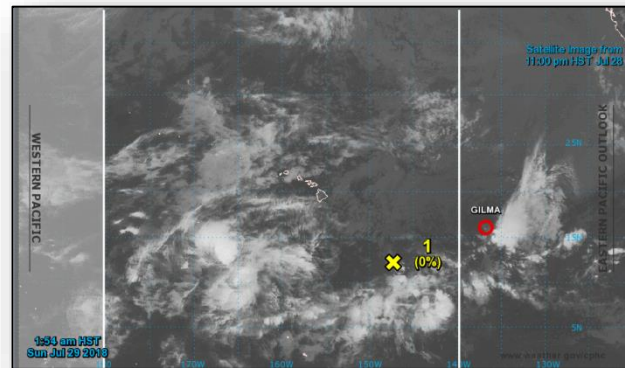


Tropical Outlook – Central Pacific



Disturbance 1 (as of 8:00 a.m. EDT)

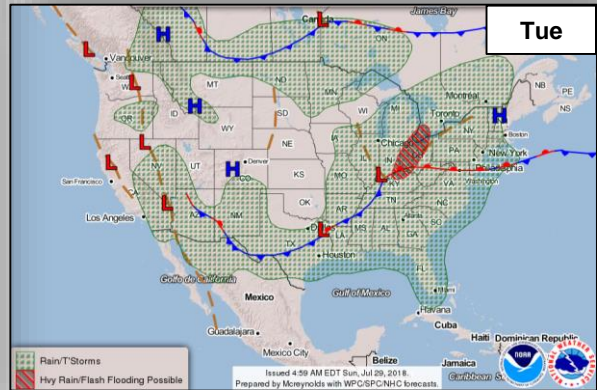
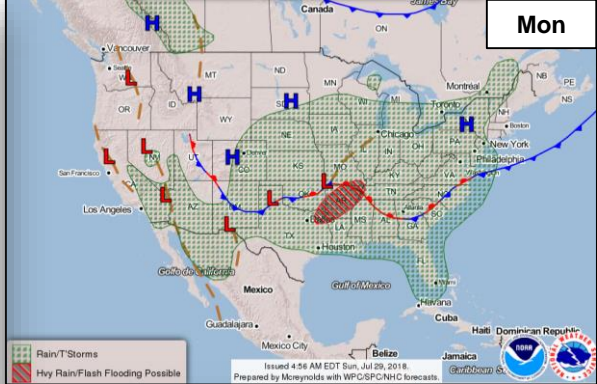
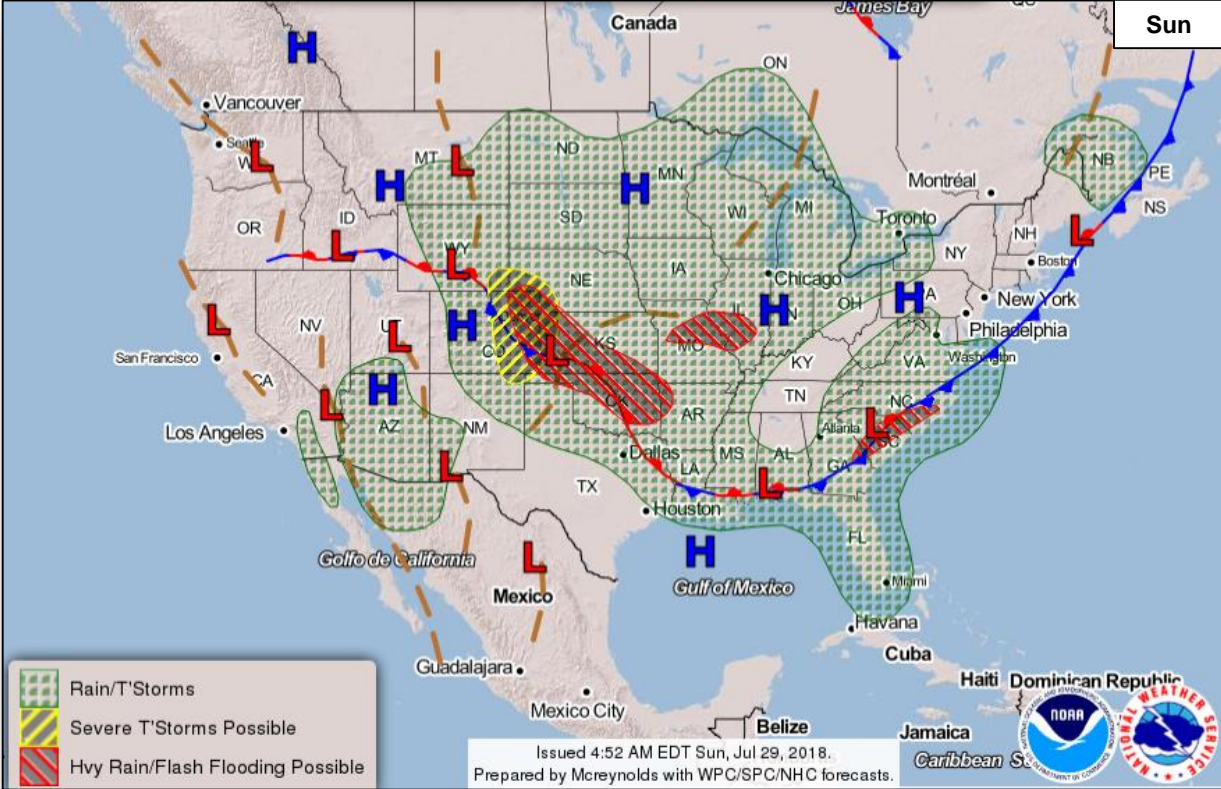
- Remnants of former Tropical Depression Nine-E
- Located 850 miles SE of Hilo, HI
- Moving W at 10 mph
- Unfavorable upper-level winds expected to inhibit regeneration of this system over next few days
- Formation chance through 48 hours: Low (near 0%)
- Formation chance through 5 days: Low (near 0%)



National Weather Forecast



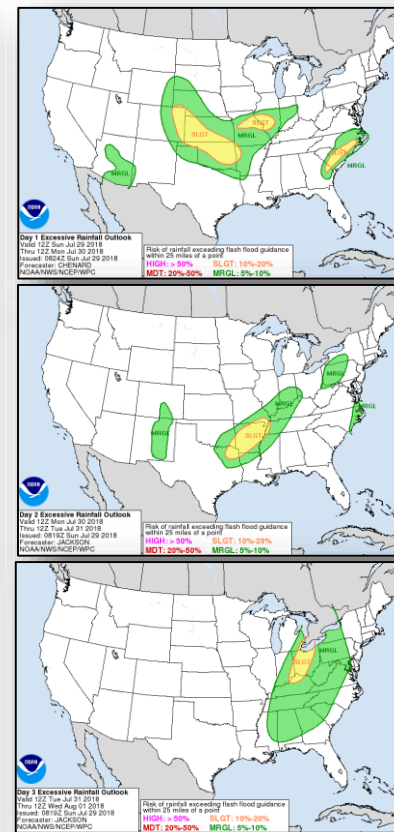
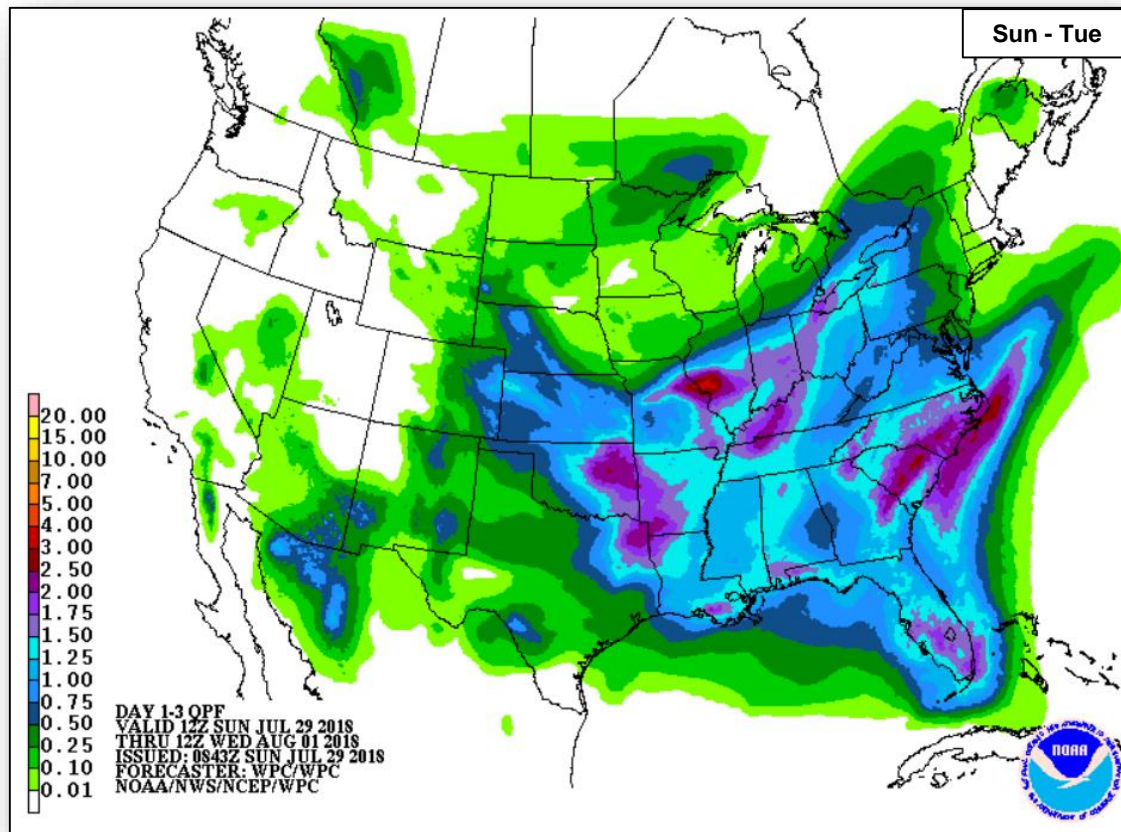
FEMA



Precipitation / Excessive Rainfall Forecast



FEMA



Sun

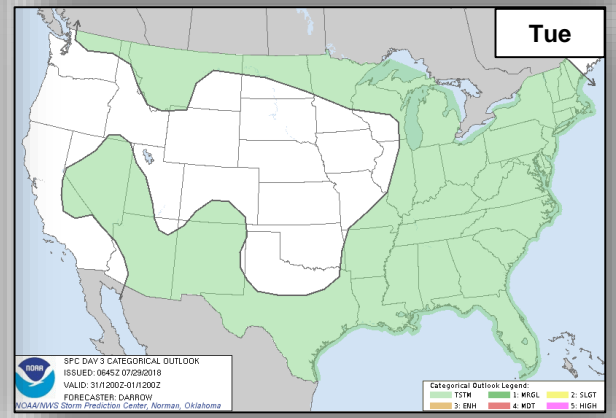
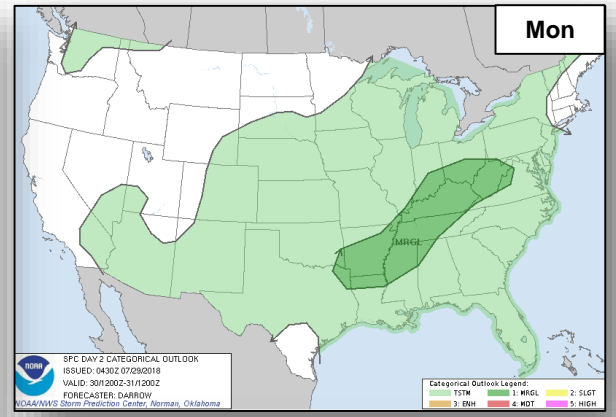
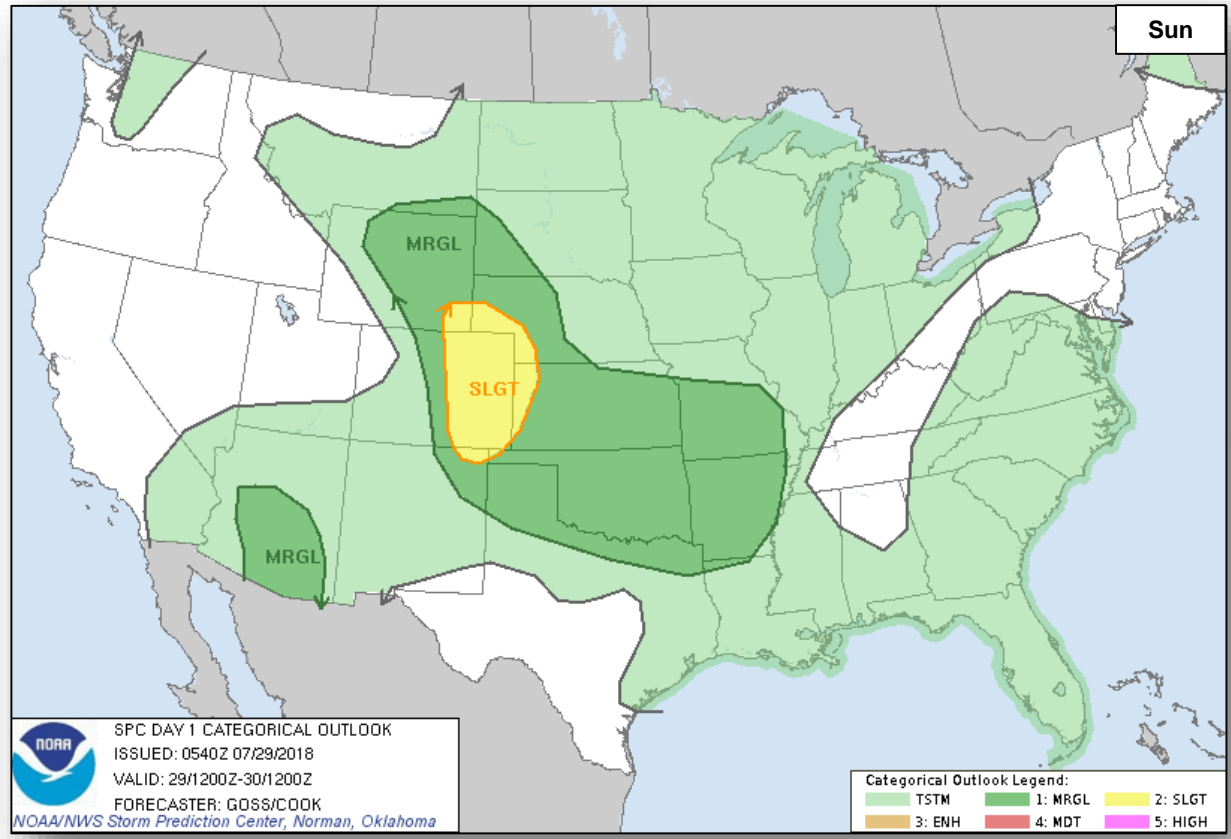
Mon

Tue

Severe Weather Outlook



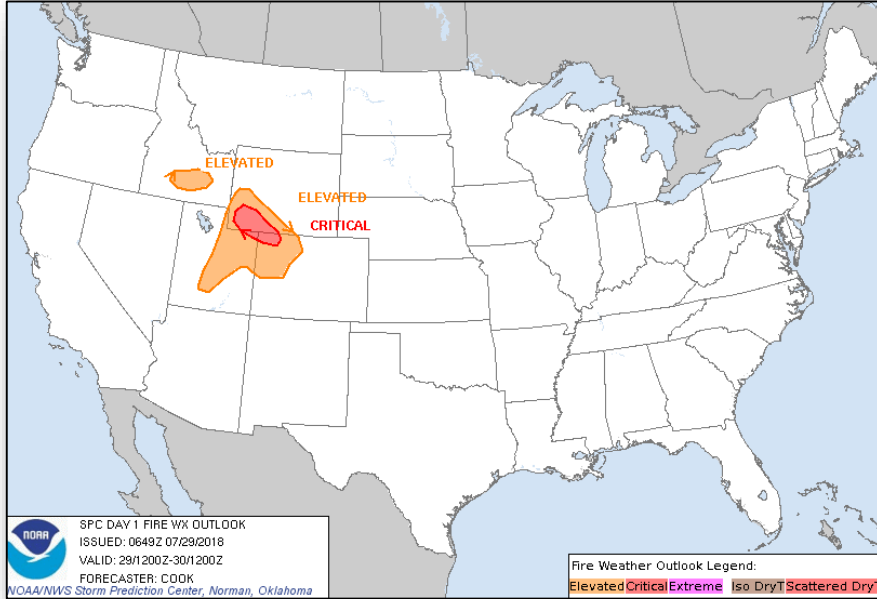
FEMA



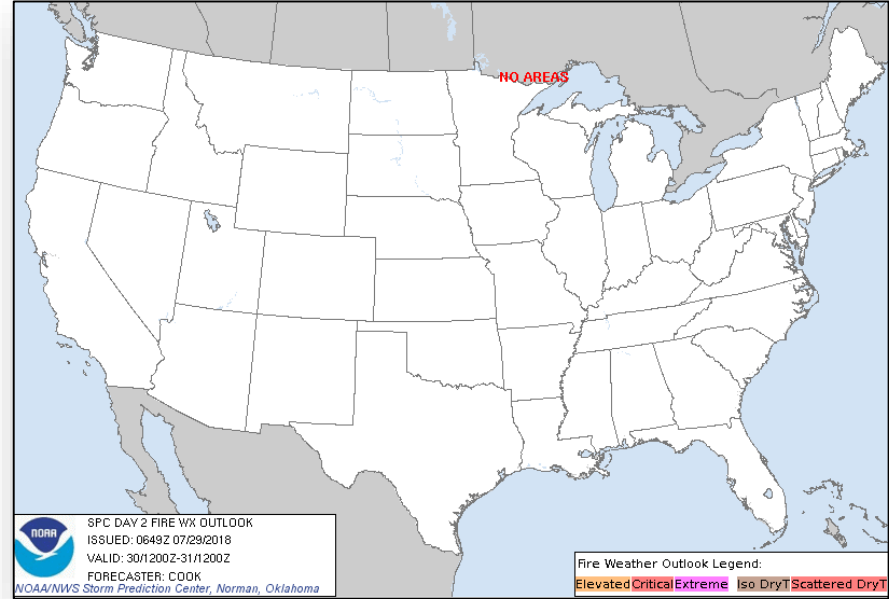
Fire Weather Outlook



FEMA



Sunday

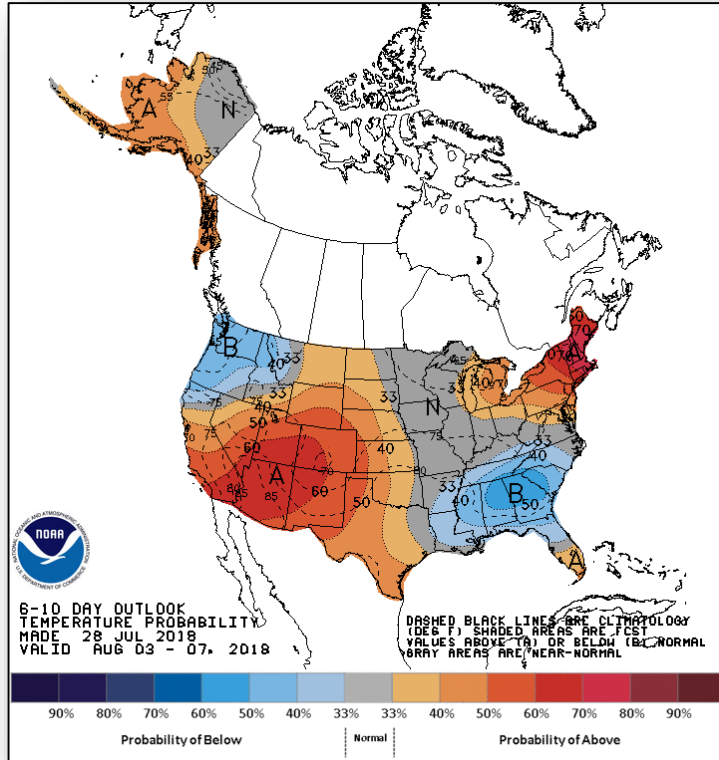


Monday

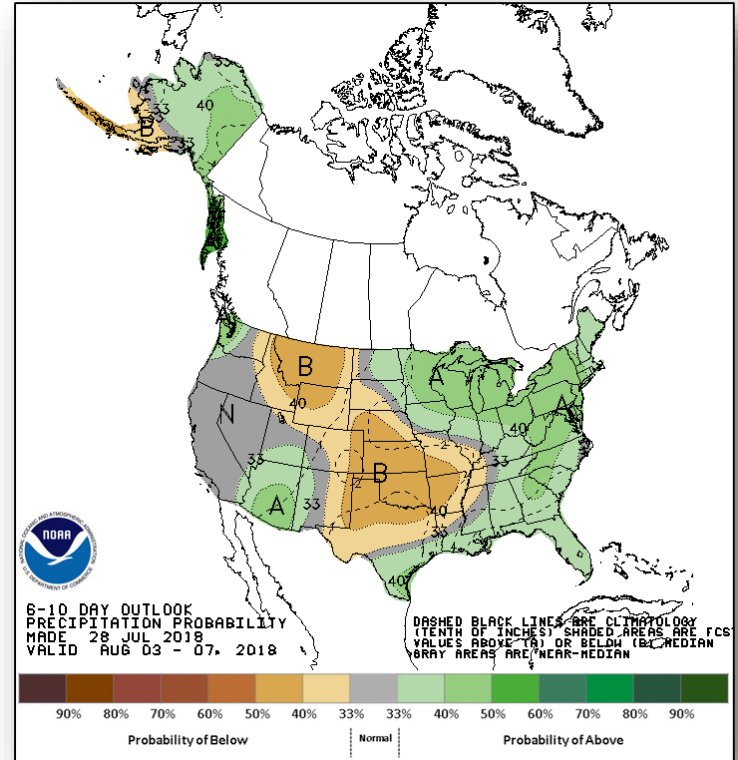
Long Range Outlooks – August 3-7



FEMA



Temperature Probability



Precipitation Probability

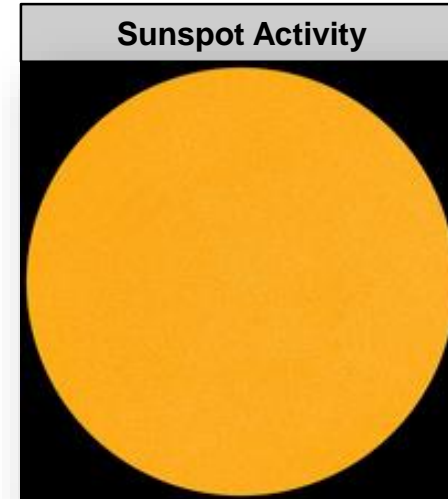
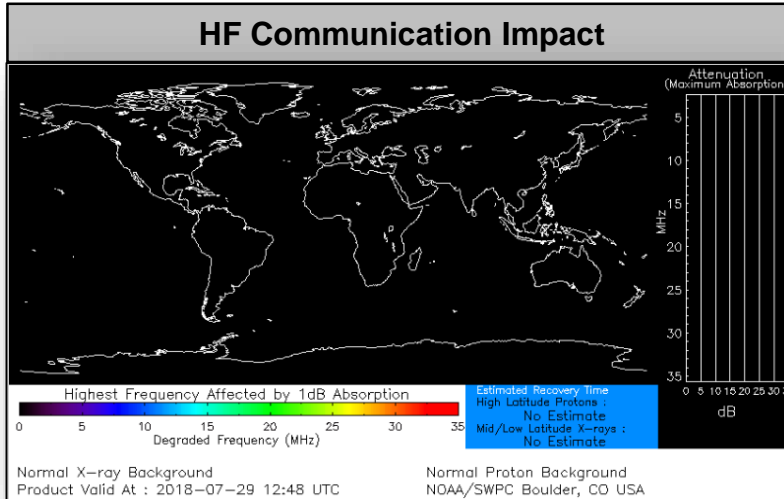
Space Weather



FEMA

	Space Weather Activity	Geomagnetic Storms	Solar Radiation	Radio Blackouts
Past 24 Hours	None	None	None	None
Next 24 Hours	None	None	None	None

For further information on NOAA Space Weather Scales refer to: <http://www.swpc.noaa.gov/noaa-scales-explanation>



Joint Preliminary Damage Assessments



FEMA

Region	State / Location	Event	IA / PA	Number of Counties		Start – End
				Requested	Completed	
V	MN	Flooding June 15 – July 8, 2018	IA	0	0	N/A
			PA	28 & 3 Tribes*	2	7/19 – TBD
VII	NE	Severe Storms and Flooding June 1 – July 1, 2018	IA	0	0	N/A
			PA	10	0	7/25 – TBD
VIII	CRIR** (SD)	Severe Storms, Wind, and Hail June 29 -July 4, 2018	IA	1	0	7/31 - TBD
			PA	1	0	7/31 - TBD

*Red Lake Nation, White Earth Nation, and Leech Lake Band of Ojibwe

**Cheyenne River Indian Reservation (Cheyenne River Sioux Tribe)

Disaster Requests & Declarations



FEMA

Declaration Requests in Process					Requests APPROVED (since last report)	Requests DENIED (since last report)
8	IA	PA	HM	Date Requested	1	0
SD – DR Severe Storms and Flooding		X	X	June 14, 2018		
MT – DR Flooding		X	X	June 18, 2018		
VT – DR Severe Storms and Flooding		X	X	June 21, 2018		
LA – DR Flooding		X	X	June 29, 2018		
AK – DR Flooding		X	X	June 28, 2018		
CT – DR Severe Storm, Tornado, and Straight-line Winds	X	X	X	July 9, 2018		
MI – DR Severe Storms, Flooding, Landslides, and Mudslides	X	X	X	July 9, 2018		
WI – DR Severe Storms, Straight-line Winds, and Flooding		X	X	July 20, 2018		
CA – EM Wildfires		X	X	July 28, 2018	Declared July 28, 2018	

FEMA Readiness – Activation Teams



Status		Activated Team	Activation Level	Activation Times	Reason / Comments
NWC (5 Teams)	Steady State				
NRCC (2 Teams)	Available				
HLT (1 Team)	Activated				
RWC / MOCs (10 Regions)	Steady State				
RRCCs (10 Regions)	Available				

Backup Regions: **VIII, VI, and IV**



FEMA

FEMA's mission is helping people before, during, and after disasters.