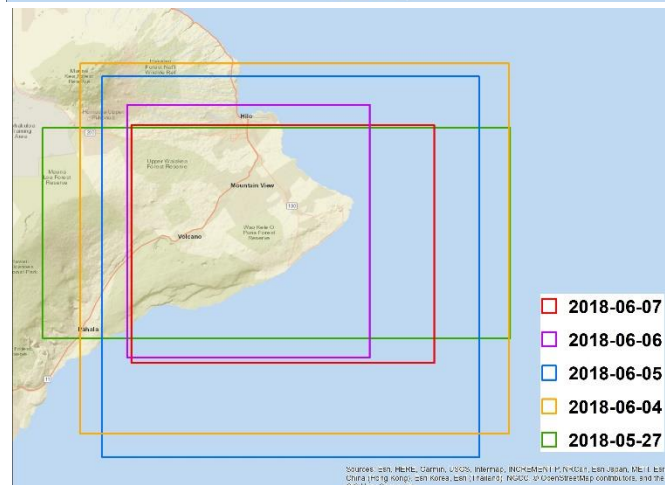
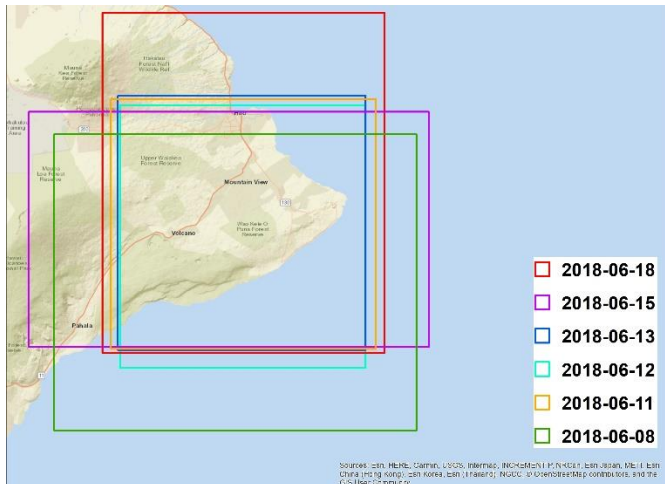
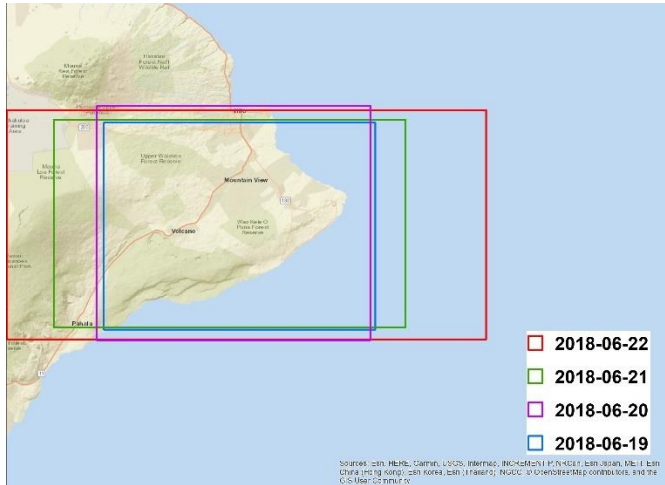


SPOT

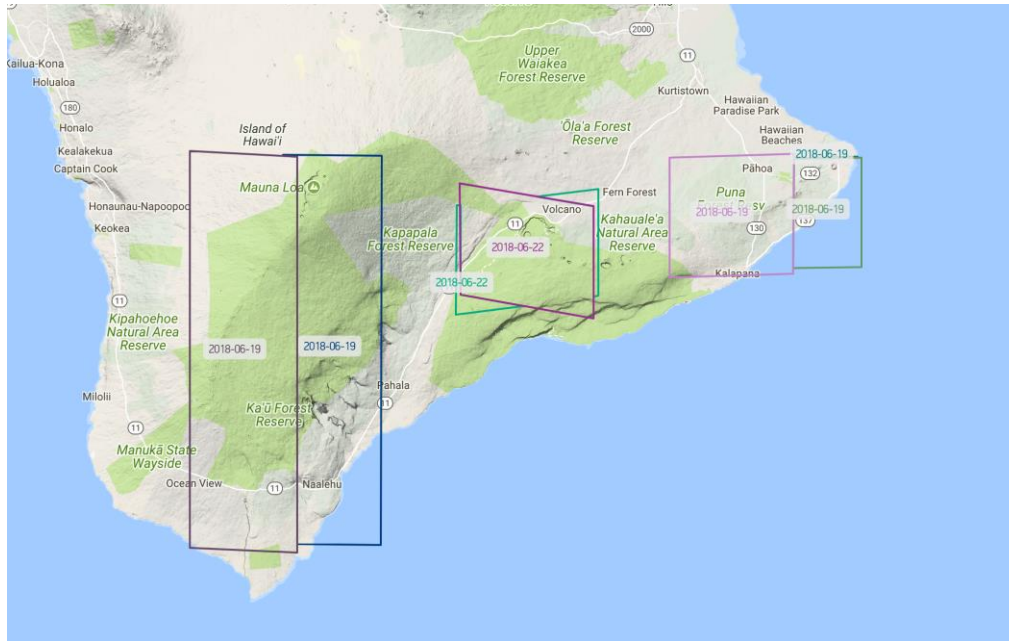


End HDDS

Digital Globe Imagery

Digital Globe imagery is available orthorectified in the NGA funded EnhancedView Web Service. Users with .gov or .mil emails can self-register.

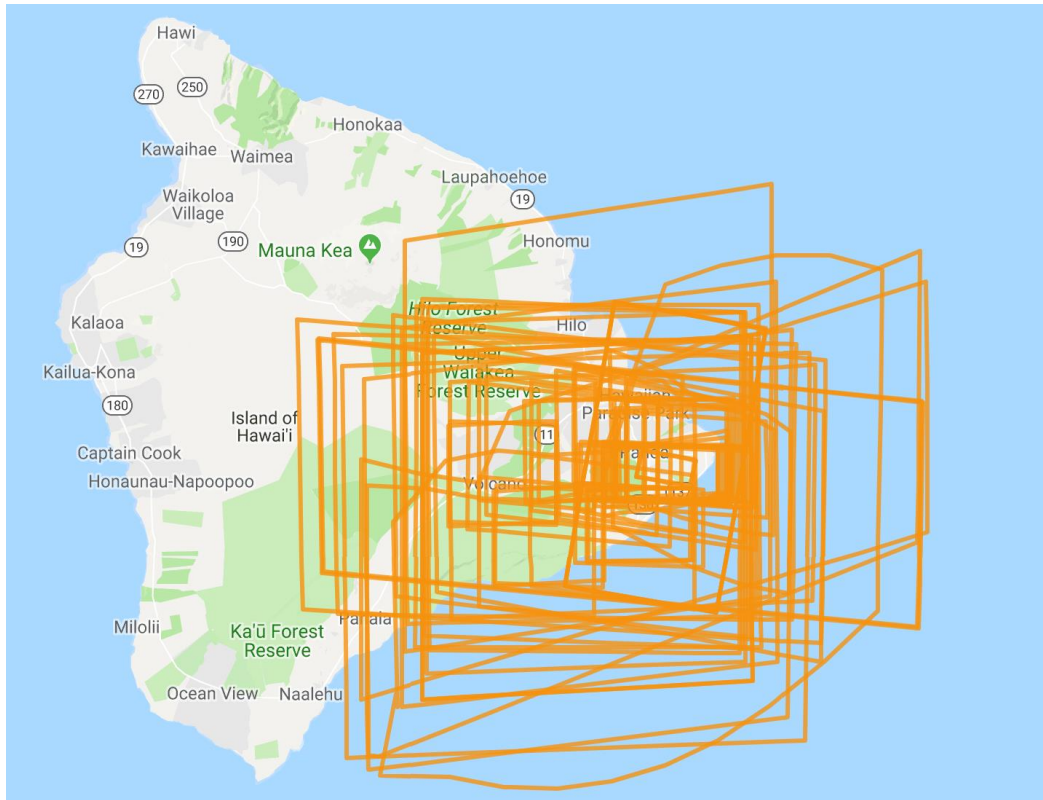
<https://evwhs.digitalglobe.com/myDigitalGlobe/>



Imagery available from past 7 days

Eagle Vision

<http://dev.evr2est.us/scenes/table> and <http://evr2est.us/>



License
Disaster Relief

Image Type
Multispectral

GSD
1.5 m

Acquisition Date
25Jun18 - 1535 America/Chicago

[Download KML](#)

[View Scene Page](#)



License
Disaster Relief

Image Type
Panchromatic

GSD
1 m

Acquisition Date
25Jun18 - 0813 America/Chicago

[Download KML](#)

[View Scene Page](#)



License
Disaster Relief

Image Type
Multispectral

GSD
1 m

Acquisition Date
23Jun18 - 1615 America/Chicago

[Download KML](#)

[View Scene Page](#)



License
Disaster Relief

Image Type
Multispectral

GSD
1 m

Acquisition Date
22Jun18 - 1623 America/Chicago

[Download KML](#)

[View Scene Page](#)



License
Disaster Relief

Image Type
Multispectral

GSD
1 m

Acquisition Date
22Jun18 - 1623 America/Chicago

[Download KML](#)

[View Scene Page](#)



License
Disaster Relief

Image Type
Multispectral

GSD
1.5 m

Acquisition Date
22Jun18 - 1557 America/Chicago

[Download KML](#)

[View Scene Page](#)



License
Disaster Relief

Image Type
Multispectral

GSD
1 m

Acquisition Date
21Jun18 - 1541 America/Chicago

[Download KML](#)

[View Scene Page](#)



License
Disaster Relief

Image Type
Multispectral

GSD
1 m

Acquisition Date
21Jun18 - 1541 America/Chicago

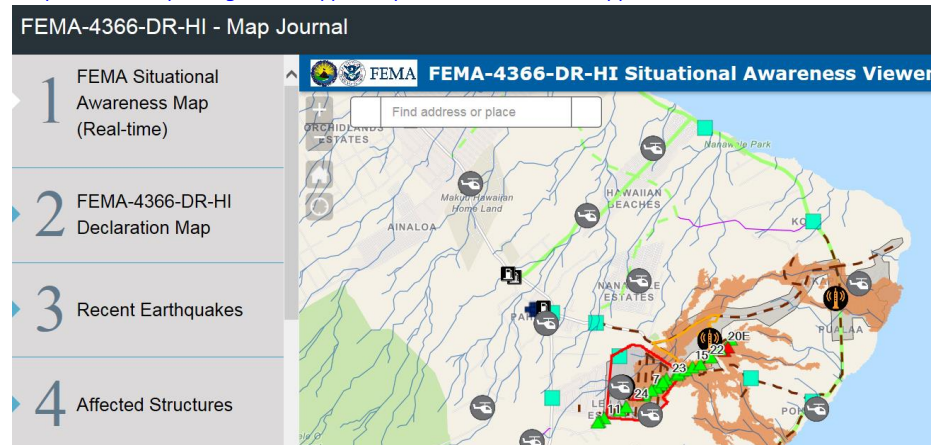
[Download KML](#)

[View Scene Page](#)



FEMA Map Journal

<http://fema.maps.arcgis.com/apps/MapSeries/index.html?appid=8755f5e5ee434823b60736c9c03200d6>



USGS Hawaiian Volcano Observatory

<https://volcanoes.usgs.gov/observatories/hvo/>

[Update](#) | [Monitoring](#) | [Photos](#) | [Maps](#) | [Webcams](#) | [Deformation](#) | [Air Quality](#) | [Videos](#)

<https://volcanoes.usgs.gov/volcanoes/kilauea/status.html>

https://volcanoes.usgs.gov/volcanoes/kilauea/multimedia_maps.html

https://volcanoes.usgs.gov/volcanoes/kilauea/multimedia_chronology.html

<https://www.youtube.com/watch?v=szkWReGJ9Hs>

<https://www.youtube.com/watch?v=cZ1bkxAuxTk>

USGS ScienceBase shows the latest flow mapping of lava extent

<https://www.sciencebase.gov/catalog/item/5afe0ba7e4b0da30c1bdb9db>

Smithsonian Institution, Global Volcanism Program.

<http://volcano.si.edu/volcano.cfm?vn=332010>

Pacific Disaster Center (Public Site)

<http://www.pdc.org/>

Pacific Disaster Center EMOPS (Requires registration)

<https://emops.pdc.org/emops/>

PDC - Volcanic Activity, Kilauea, Hawaii, Update 10MAY18

- "Volcano - Kilauea, United States" event in DisasterAWARE™:

https://emops.pdc.org/emops/?hazard_id=9479

- PDC Situational Awareness [product](#) attached showing Current/Past Lava Extent

- Data (7 layers) integrated into DisasterAWARE:

- Fissures (HI County Lava 2018)
- Current/Past Lava Extent (HI County Lava 2018)
- Earthquake M6.9 Shaking Intensity (HI County EQ 2018)
- Road Blocks (HI County Lava 2018)

- Building Damage Estimates (HI County EQ 2018)
- Economic Loss Estimates (HI County EQ 2018)

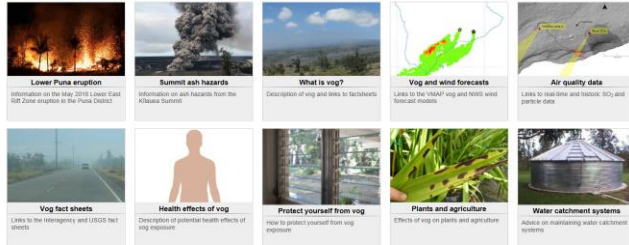
Register here for a DisasterAWARE™ Account: <https://emops.pdc.org/emops/public/registeruser.jsp>

Hawaii Interagency Vog Information Dashboard ★

<https://vog.ivhhn.org/>

Hawaii Interagency Vog Information Dashboard

Welcome to the Vog Dashboard. Please click on the links below to find comprehensive information and data related to vog and its impacts.

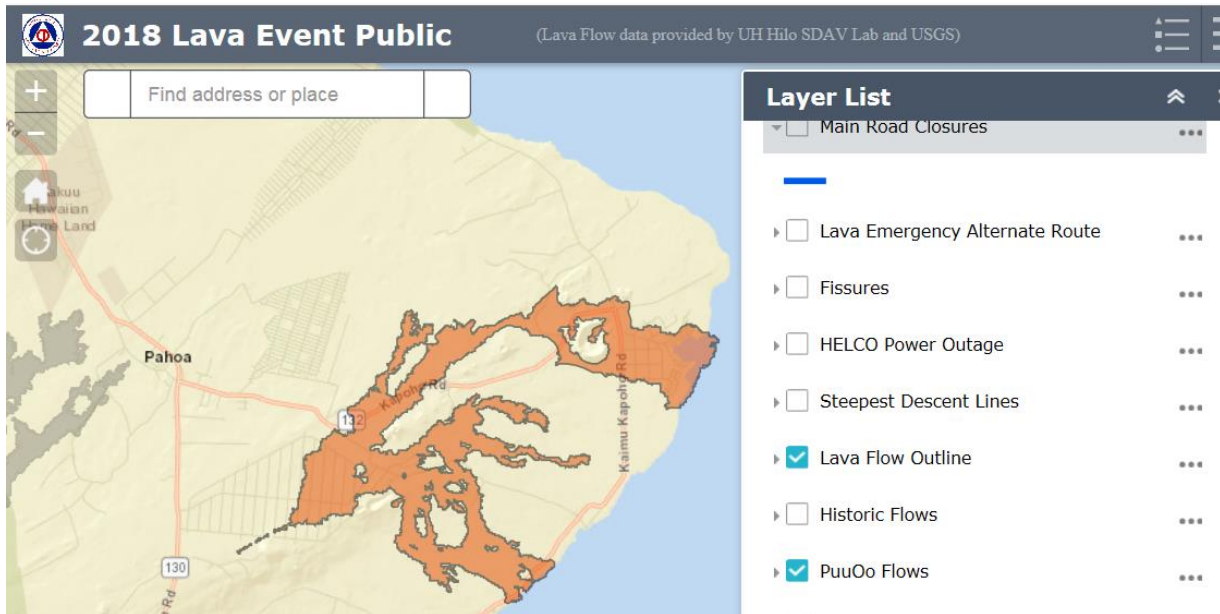


Hawaii County

<http://www.hawaiicounty.gov/>

Hawaii Civil Defense eruption map: ★

<https://hawaiicountygis.maps.arcgis.com/apps/webappviewer/index.html?id=3428cd9282ff431c865eb32761793078>



Hawaii Center for Volcanology

<https://www.soest.hawaii.edu/GG/HCV/kilauea.html>

ESRI Living Atlas of Digital Globe Imagery

Post event imagery from Digital Globe. Both Near Infrared and Natural Color.

<http://www.arcgis.com/home/webmap/viewer.html?webmap=6c55717376ff4faaa18ea75e0388e4b2>

MappingSupport.com (public site)

Google + GIS map displaying lava flow data from the USGS. User can turn on a parcel layer. Read the "Map tips" for more information.

https://mappingsupport.com/p/gmap4.php?usng=5Q_LB_0479_5439&z=13&t=+1_Latest_lava_extent.Latest_lava_expansion.PGV_property.Road_centerline.Steepest_descent_Line.Active_flow_channel.Active_fissure&coord=usng&q=https://mappingsupport.com/p/disaster/2018/hawaii/hawaii_kilauea_eruption.txt

NASA Mount Kilauea Eruption, Hawaii 2018

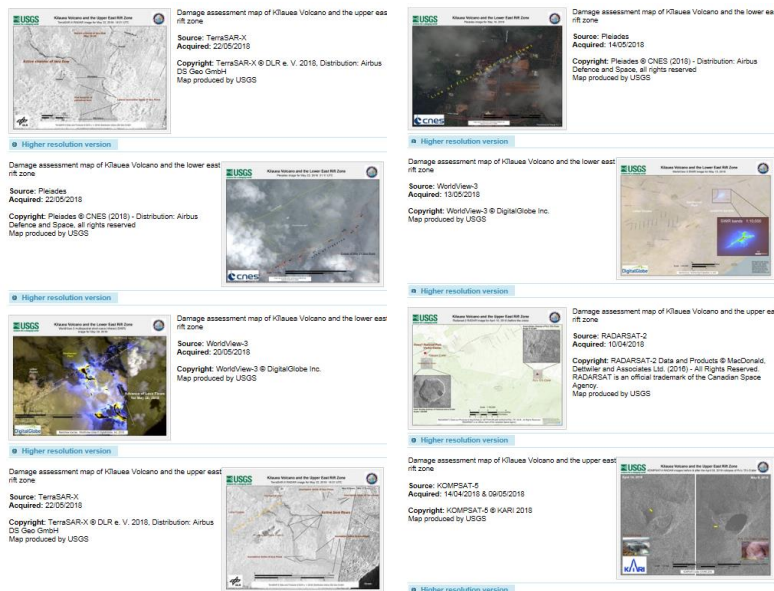
<https://maps.disasters.nasa.gov/arcgis/home/group.html?id=bcc9f2a163d74c818bb388fd7a55d852>

PurpleAir (Real Time Air Quality)

<https://www.purpleair.com/map?&zoom=9&detailsshowing=2213&lat=19.79760758235925&lng=-154.9764858007198&clustersize=33&orderby=L.&latr=1.7603274989321989&lng=4.21875>

International Charter for Space and Major Disasters

<https://disasterscharter.org/web/guest/activations/-/article/volcano-in-united-states-activation-571->



Open Street Map

<https://www.openstreetmap.org/search?query=hawaii#map=13/19.3593/-155.1358>

RemotePixel Viewer (Landsat-8, Sentinel-2 and CBERS-4 data viewer powered by AWS Lambda)

https://viewer.remotepixel.ca/?gl_size=256&raster_size=256&format=jpeg&sceneid=S2A_tile_20180607_05QKB_0&pmin=2&pmax=98&rgb=1_2,8A,04#11.78/19.49804/-154.83004 ← this is set to 07June / Sentinel-2 / Shortwave Infrared

ESA Sentinel Imagery (Use Chrome or FireFox)

Sentinel data-playground- additional band combinations to choose from as compared to the eo-browser. (Viewer) **The S2 May 23, June 2. 7, 12 images shows the flow.**

https://apps.sentinel-hub.com/sentinel-playground/?source=S2&lat=19.49326428839256&lng=-154.89169119740836&zoom=13&preset=2_COLOR_INFRARED_VEGETATION_&layers=B01,B02,B03&maxcc=89&gain=1.0&gamma=1.0&time=2015-01-01%7C2018-06-07&atmFilter=&showDates=false

Pre-Event Imagery Download by County:

<https://datagateway.nrcs.usda.gov/> → Get Data => Hawaii → Hawaii County →

Hexagon Pre-Even Imagery

Hexagon is offering access to existing imagery of the Big Island to the emergency community. Their 30 cm imagery was acquired from 12/23/2015 to 06/11/2016. Contact John Gerhard, CP

Vice President / Program Director | Government Solutions; D: 720.279.3762 | M: 303.503.6174 john.gerhard@woolpert.com

Send comments, additions, and corrections to:

Ran Goldblatt

Federal Emergency Management Agency (FEMA) (New Light Technologies, Inc. (CTR))

ran.goldblatt@associates.fema.dhs.gov

If you would like to be on the distribution list, send me an email.