



FEMA

Daily Operations Briefing

Wednesday, October 18, 2017

8:30 a.m. EDT

Significant Activity – Oct 17-18



FEMA

Significant Events:

- Response and recovery – Harvey, Irma, Maria; CA Wildfires

Tropical Activity:

- Atlantic – No tropical cyclones expected next 5 days
- Eastern Pacific – No tropical cyclones expected next 5 days
- Central Pacific – No tropical cyclones expected next 5 days
- Western Pacific – No activity threatening US interests

Significant Weather:

- Elevated fire weather areas – MT, ND, MN & WY
- Red Flag Warnings – WY, ND & MN
- Space Weather: past 24 hours: none; next 24 hours: none

Earthquake Activity: No significant activity

Declaration Activity: None

Tropical Outlook – Atlantic



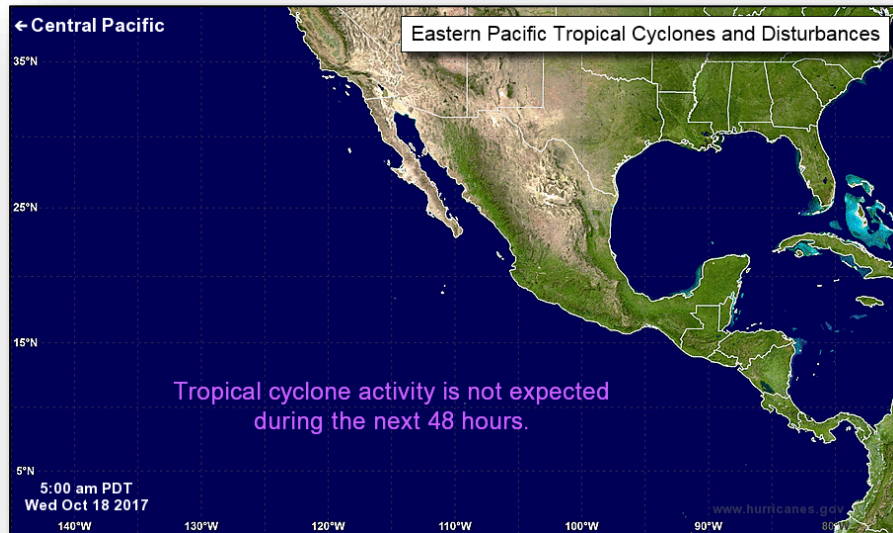
FEMA



Tropical Outlook – Eastern Pacific



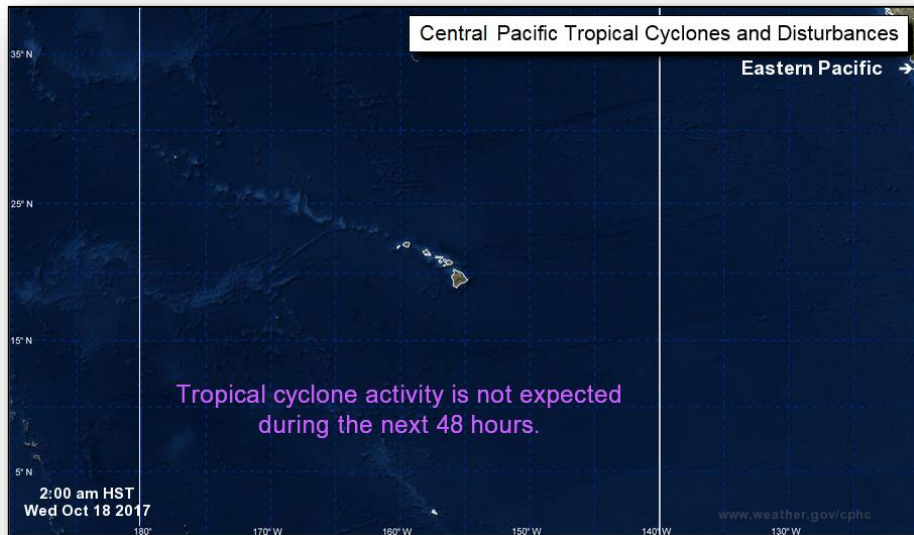
FEMA



Tropical Outlook – Central Pacific



FEMA



Next 48 hours



Next 5 days

PR/USVI Update



Puerto Rico

- Shelters: [104 \(-1\)](#) shelters open with [4,842 \(-195\)](#) occupants
- Disaster Assistance Registrations: [654k](#)

Power Outages / Restoration

- [17.7% \(+3.7%\)](#) of customers with power restored
- [21.2 \(+0.6%\)](#) of transmission lines energized; [33.1% \(-9%\)](#) substations energized
- [Power grid contract awarded October 16](#)
- PREPA estimating 95% to be restored by December 15

Communications:

- [24.6%](#) of cell towers operational; [88%](#) of population lives in area where wireless coverage is available for voice and text messages

Health & Medical

- 64 of 67 hospitals open; 41 on power grid, [23](#) on generator power
- [2 Federal Medical Stations operational](#)
- [Linde Gas unable to cool cryogenic oxygen due to fluctuating power; full oxygen production expected in 6-8 days; sea bridge still required to transport oxygen and maintain inventory](#)

FEMA Response

- NRCC: [Modified Level III \(day shift, 8:00 am - 6:00 pm EDT\)](#)
- [National IMAT East-1 expected to arrive in PR today](#)
- FEMA Region II & X IMATs: deployed to USVI
- MERS teams deployed to both USVI & PR

U.S. Virgin Islands

- Shelters: [5](#) shelters open with [312 \(-2\)](#) occupants
- Disaster Assistance Registrations: [13.4k](#)

Power Outages / Restoration

- Customers receiving power from grid: St. Thomas: 15.6%; St. Croix: 1.6%; St. John: no grid power, restoration expected in 3-4 weeks
- WAPA estimates 90% of USVI to be restored by late December
- [Restoration efforts curtailed in all islands due to heavy rain](#)

Communications:

- 44.6% cell towers operational; [61%](#) of population lives in area where wireless coverage is available for voice and text

Health & Medical

- [St. Thomas: Schneider Medical Center sustained damage; established mobile medical facility](#)
- St. Croix: Charles Harwood Facility closed; Governor Juan Luis Hospital partially open despite damage

Wildfire Summary



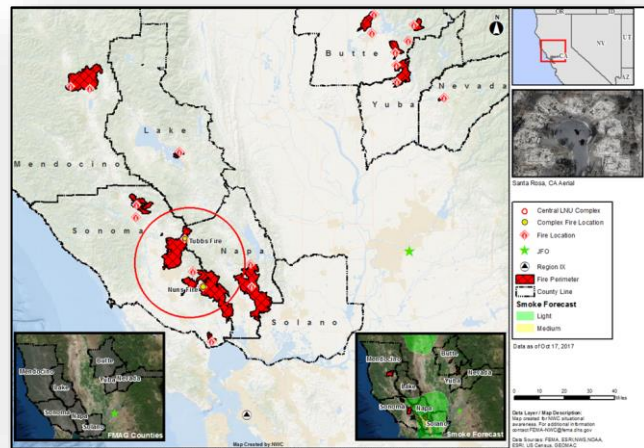
| Complex | Fire Name (County) | FMAG # (Approved Date) | Acres Burned | Percent Contained | Evacuations | Structures | | | Fatalities / Injuries |
|-------------------------|--------------------------|---------------------------------|---------------------|----------------------|-------------|--------------------------|--------------------|------------------------|--------------------------|
| | | | | | | Threatened | Damaged | Destroyed | |
| California | | | | | | | | | |
| *Central LNU Complex | Tubbs (Sonoma / Napa) | 5215-FM-CA (October 9, 2017) | 102,785 (+1,382) | 60% (+16) | Mandatory | 21,112 (18,542 homes) | 264 (198 homes) | 5,017 (4,177 homes) | 23 / 0 |
| | Nuns (Sonoma) | 5220-FM-CA (October 9, 2017) | | | | | | | |

Situation:

- Two hospitals in Santa Rosa County that were evacuated are being re-populated
- High pressure gas lines, hydroelectric infrastructure, water supplies, and communication infrastructures threatened, damaged, or destroyed
- Commercial and agricultural vineyards are threatened, damaged or destroyed

Response:

- Major Disaster Declaration FEMA-4344-DR-CA
- Region IX RRCC: not activated; RWC at Steady State (24/7)
- Region IX IMAT-1 deployed to CA EOC
- Bothell & Denver MERS deployed to CA
- Public Health Emergency declared by Secretary of HHS
- CA EOC at Full Activation
- 23 (-6) ARC and independent shelters open with 721 (-704) occupants (ARC Midnight Shelter Count as of 5:54 am EDT)

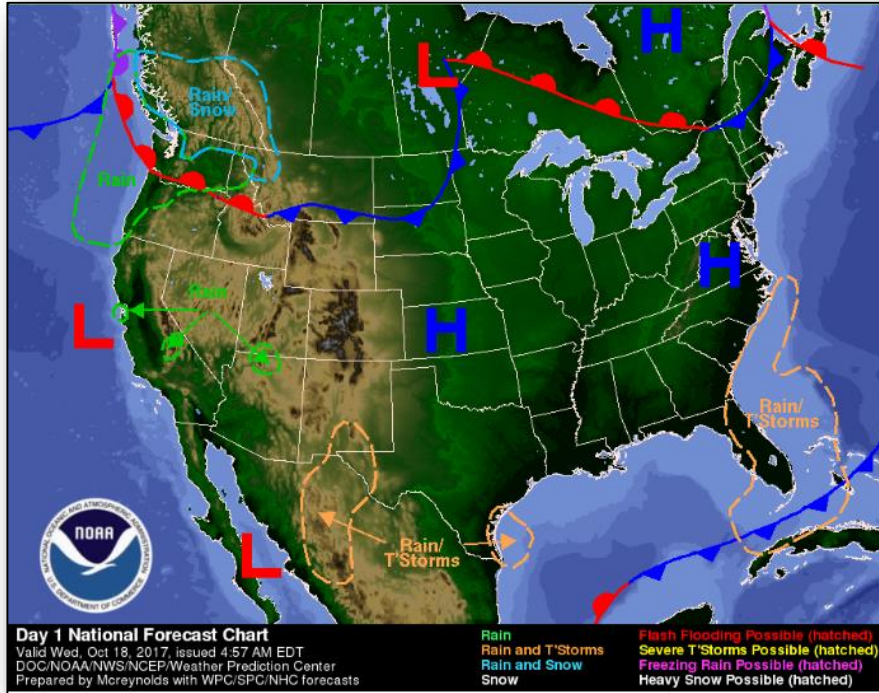


***Note:** Complex fires may contain fires that have not received FMAGs; reduction in acreage is due to more accurate fire perimeters and continued changes to individual fires within the complex; some fires are moving out of one complex and into another

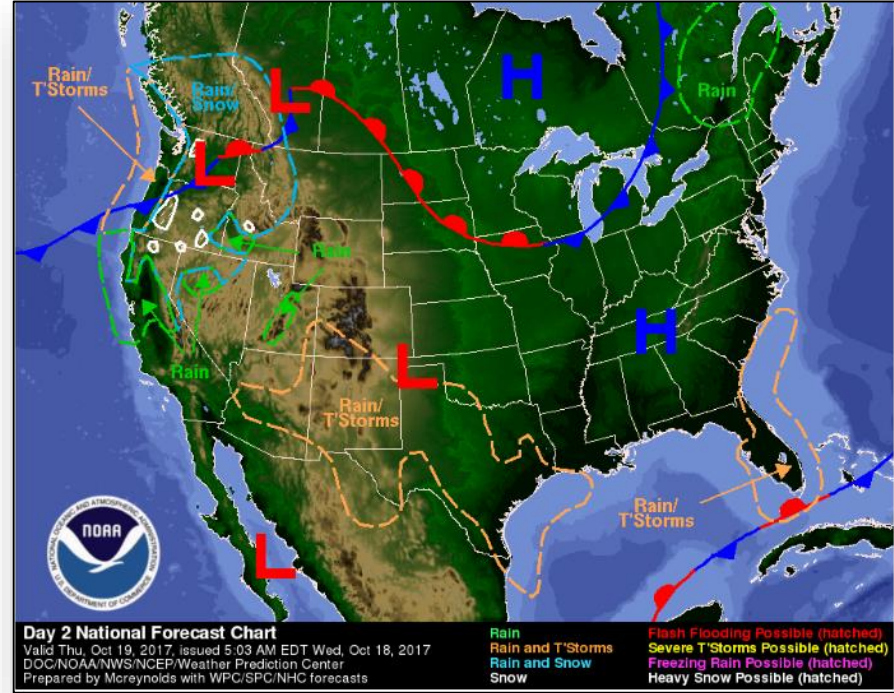
National Weather Forecast



FEMA



Today

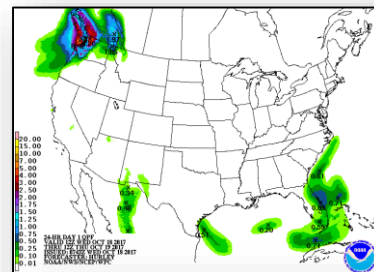
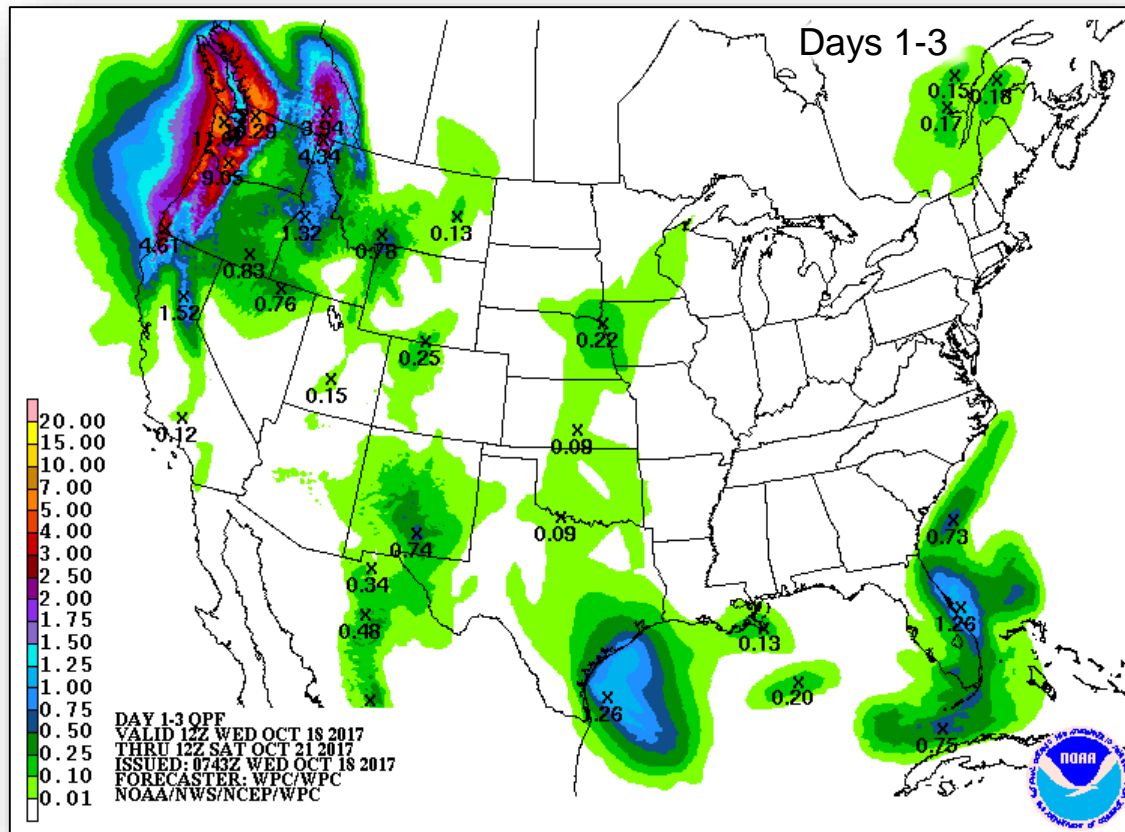


Tomorrow

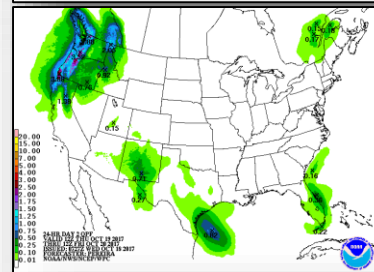
Precipitation Forecast



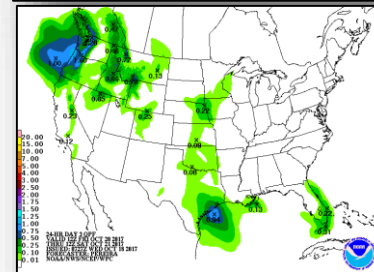
FEMA



Day 1



Day 2

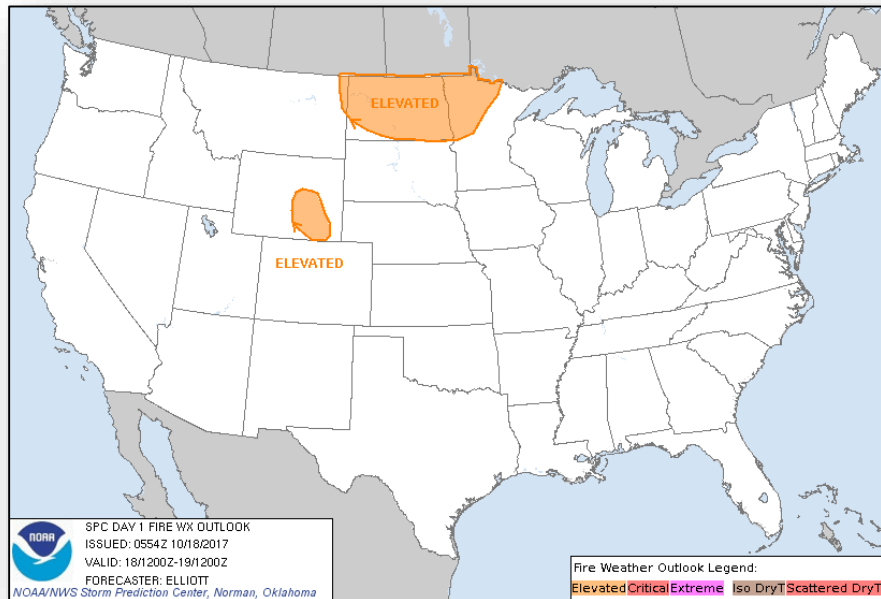


Day 3

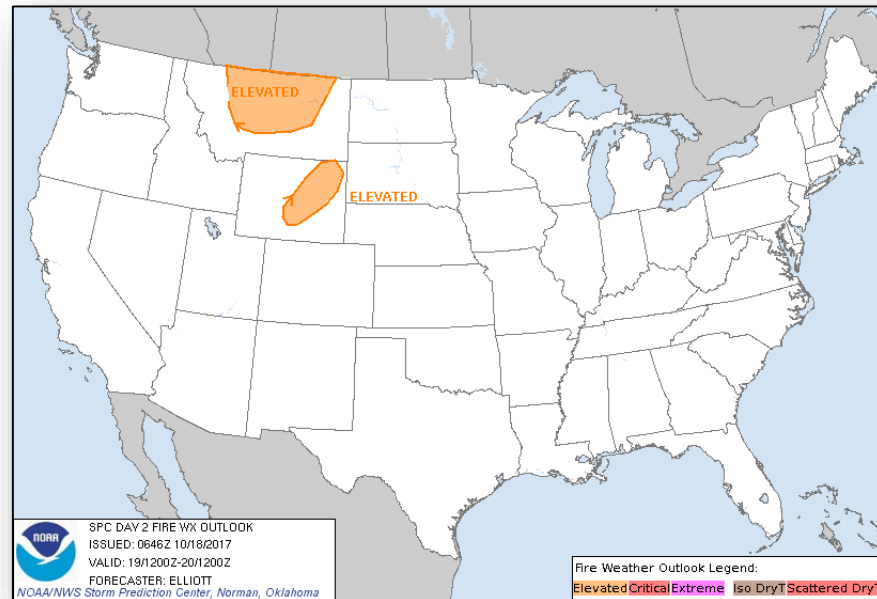
Fire Weather Outlook



FEMA



Today

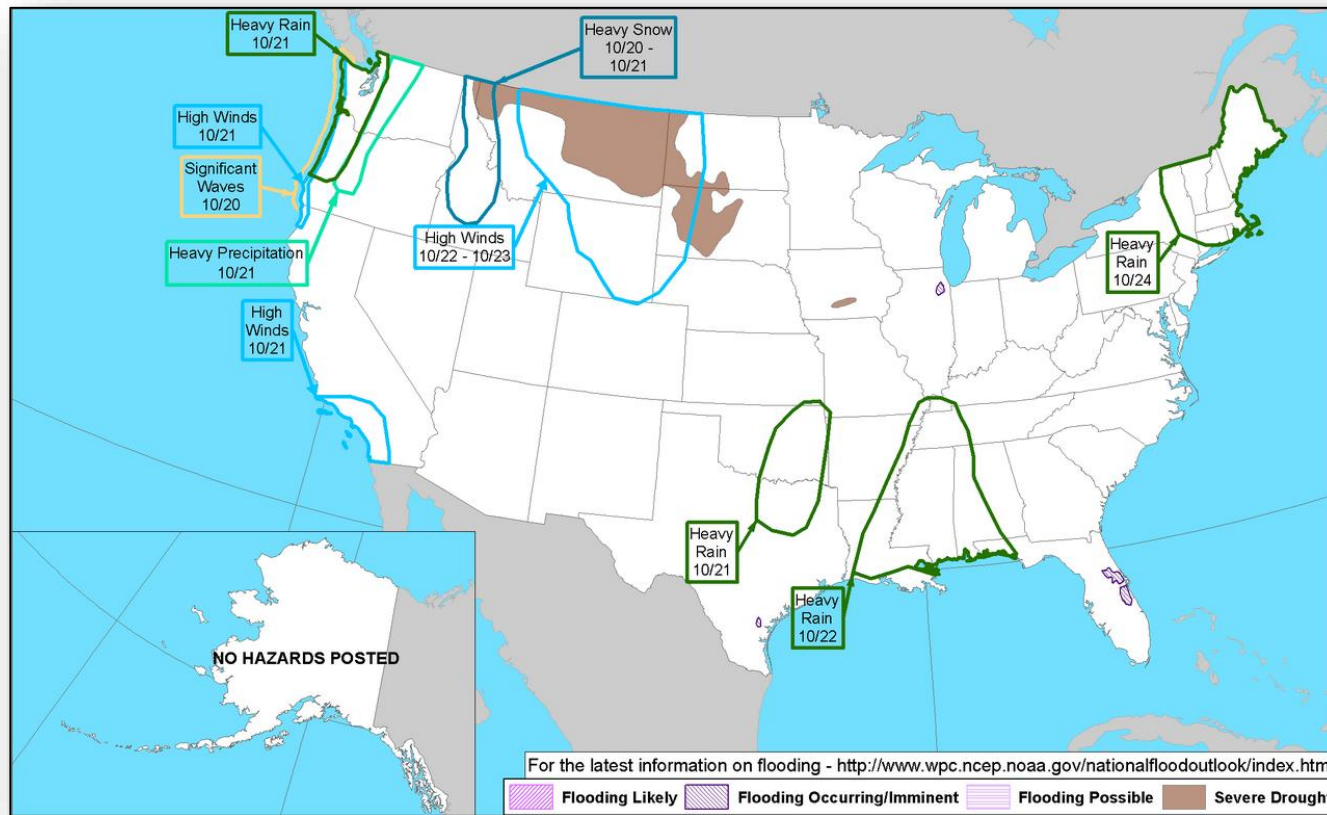


Tomorrow

Hazards Outlook – Oct 20-24



FEMA

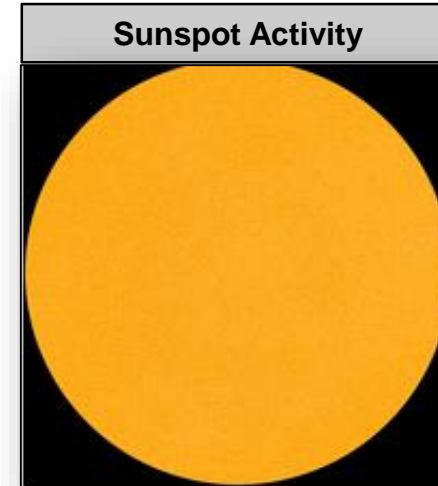
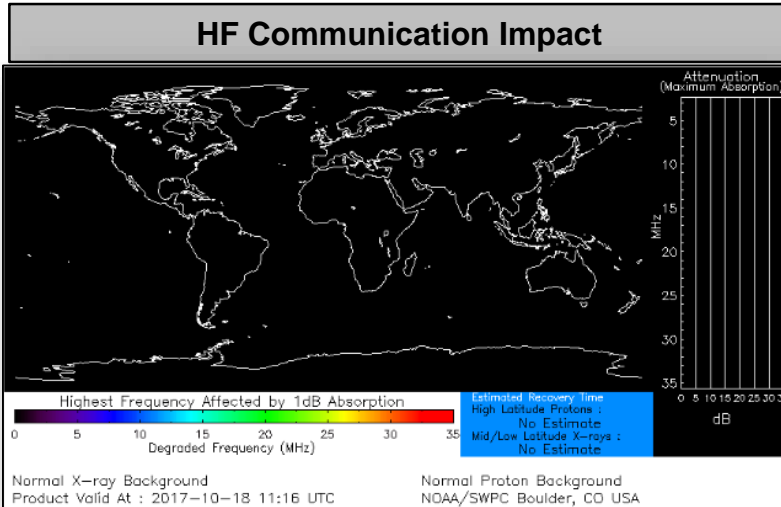


Space Weather



FEMA

| | Space Weather Activity | Geomagnetic Storms | Solar Radiation | Radio Blackouts |
|---|------------------------|--------------------|-----------------|-----------------|
| Past 24 Hours | None | None | None | None |
| Next 24 Hours | None | None | None | None |
| For further information on NOAA Space Weather Scales refer to http://www.swpc.noaa.gov/noaa-scales-explanation | | | | |



Disaster Requests & Declarations



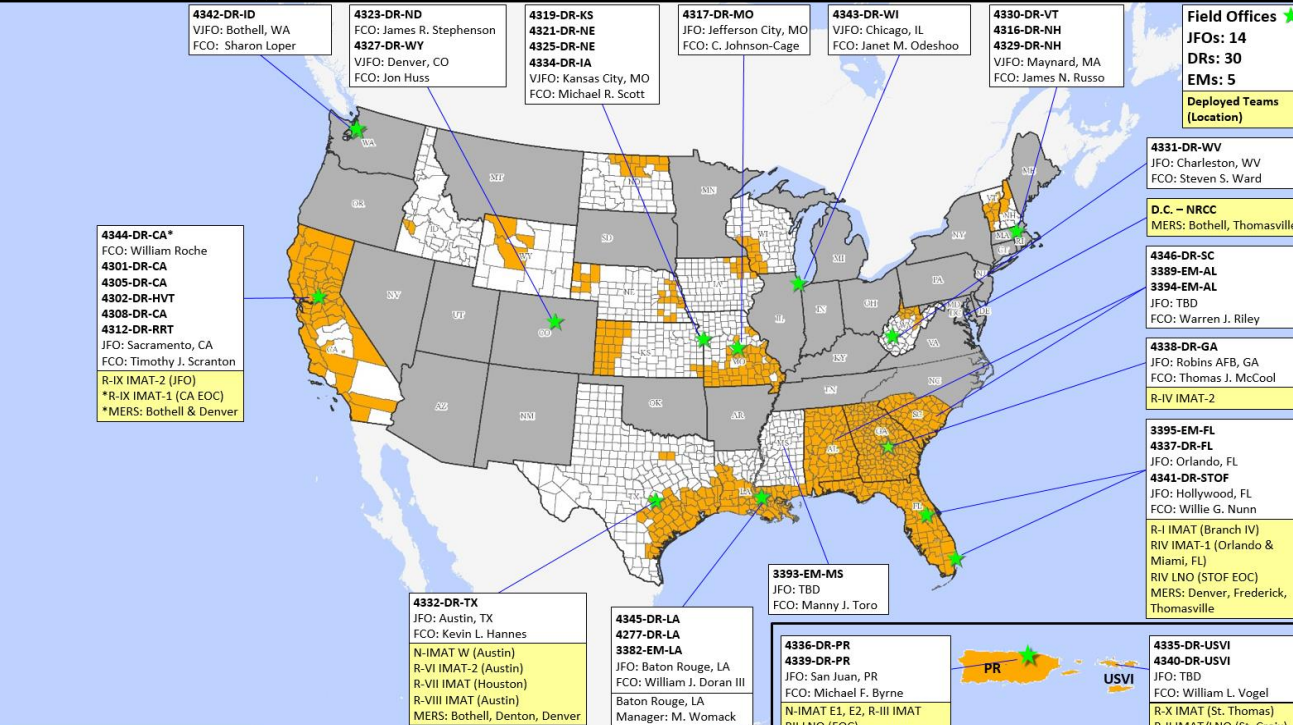
FEMA

| Declaration Requests in Process | | | | | Requests APPROVED (since last report) | Requests DENIED (since last report) |
|--|----|----|----|-----------------|---|---|
| 5 | IA | PA | HM | Date Requested | 0 | 0 |
| NY – DR (Expedited) Flooding | X | X | X | July 6, 2017 | | |
| ND – DR Severe Storm | | X | X | August 24, 2017 | | |
| KS – DR Severe Storms, Straight-line Winds, and Flooding | | X | X | August 31, 2017 | | |
| IL – DR Severe Storms and Flooding | X | | X | August 31, 2017 | | |
| NY – DR Severe Storms, Tornadoes, and Flooding | X | X | X | August 31, 2017 | | |

Readiness – Deployable Teams and Assets



FEMA

| Resource | Force Strength | Available | Deployed | Other | Cadres Less than 25%: DI 5% (7/128), DSA 18% (151/839), EA 18% (121/605), EHP 11% (35/320), ER 16% (10/61), FLDR 17% (29/169), FM 17% (57/293), HM 19% (188/980), HR 14% (36/253), IA 24% (592/2,514), IT 9% (57/628), LOG 12% (142/1,161), NDRS 16% (29/182), OPS 17% (45/257), PL 21% (93/440), SAF 8% (5/60), SEC 1% (1/97) |
|-------------------------------|----------------|------------|--|-------|--|
| Total Workforce | 11,332 ▲ | 2,216▲ 19% | 7,286 ▼ | 1,830 | |
| National IMATs* (0 Teams) | East 1: | Deployed |  | | |
| | East 2: | Deployed | | | |
| | West: | Deployed | | | |
| Regional IMATs (0-3 Teams) | Assigned: | 13 | | | |
| | Available: | 2 | | | |
| | PMC / NMC: | 0 | | | |
| US&R (>66%) | Deployed: | 11 | | | |
| | Assigned: | 28 | | | |
| | Available: | 27 | | | |
| MERS (>33%) | PMC / NMC: | 1 | | | |
| | Deployed: | 0 | | | |
| | Assigned: | 36 | | | |
| FCO (≤1 Type I) | Available: | 14 (+3) | | | |
| | NMC: | 0 | | | |
| | Deployed: | 22 (-3) | | | |
| FDRC (1) | Assigned: | 38 | | | |
| | Available: | 2 | | | |
| | PMC / NMC: | 2 | | | |
| | Deployed: | 34 | | | |
| | Assigned: | 14 | | | |
| | Available: | 0 | | | |
| | PMC / NMC: | 1 | | | |
| | Deployed: | 13 | | | |

As of 3:00 a.m. EDT October 18, 2017

*B-2 Status: Assemble ≤ 2-hrs, On Site ≤ 18-hrs; B-48 Status: Assemble and deploy ≤ 48hrs; Charlie Status: No team assemble time requirement

FEMA Readiness – Activation Teams



| Resource | Status | Total | Status | Activated Team | Activation Level | Activation Times | Reason/Comments |
|-----------|--------|-------|---------------|----------------|--------------------|--|------------------------------|
| NWC | | 5 | Steady State | | | | |
| NRCC | | 2 | Activated | Gold | Modified Level III | Day shift only 8:00 a.m. - 6:00 p.m. EDT | Tropical Activity – Atlantic |
| HLT | | 1 | Activated | | | | Hurricane Season |
| RWCs/MOCs | | 10 | Steady State | | | | |
| RRCCs | | 10 | Not Activated | | | | |

Back-up Region: V, III & I



FEMA

FEMA's mission is to support our citizens and first responders to ensure that as a nation we work together to build, sustain, and improve our capability to prepare for, protect against, respond to, recover from, and mitigate all hazards.