



# **FEMA**

## **Daily Operations Briefing**

**Monday, October 16, 2017**

**8:30 a.m. EDT**



# Significant Activity – Oct 15-16



**FEMA**

## **Significant Events:**

- Response and recovery – Harvey, Irma, Maria; CA Wildfires

## **Tropical Activity:**

- Atlantic – Post-Disturbance 1 (Medium - 40%)
- Eastern Pacific – Disturbance 1 (Medium – 50%); Disturbance 2 (Low - 10%)
- Central Pacific – No tropical cyclones expected next 5 days
- Western Pacific – Tropical Storm Lan (25W)

## **Significant Weather:**

- Critical/elevated fire weather conditions – WY, CO, & NE
- Red Flag Warnings – WY
- Space Weather:
  - Past 24-hours: Minor; geomagnetic storms reaching G1 level occurred
  - Next 24-hours: None Predicted

**Earthquake Activity:** No significant activity

**Declaration Activity:** Amendment 4 to FEMA-4344-DR-CA

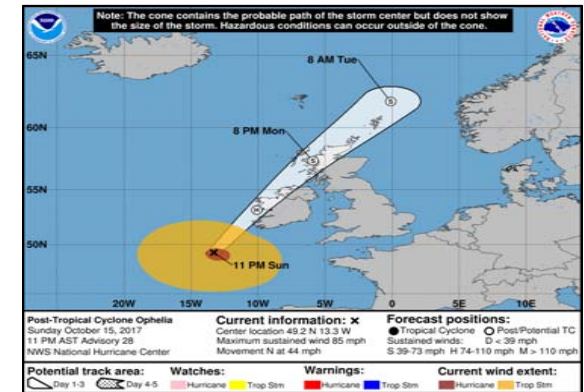


# Tropical Outlook – Atlantic



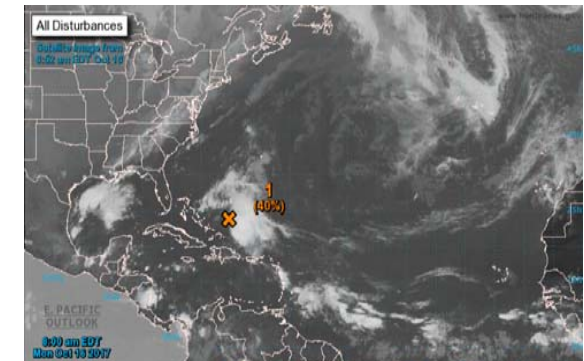
## Post-Tropical Cyclone Ophelia (FINAL) (Advisory #28 as of 11:00 p.m. EDT)

- Located 220 miles SW of Mizen Head, Ireland; moving N at 44 mph
- Maximum sustained winds 85 mph
- Forecast hurricane-force post-tropical cyclone as it nears Ireland coast
- Hurricane force winds extend 70 miles; tropical storm force winds extend 275 miles
- No coastal tropical cyclone watches or warnings in effect



## Disturbance 1 (as of 8:00 a.m. EDT)

- Located more than 175 miles NNE of the Turks and Caicos
- Conditions are unfavorable for development during next 48 hours
- Formation chance through 48 hours: Medium (40%)
- Formation chance through 5 days: Medium (40%)





# Tropical Outlook – Eastern Pacific



FEMA

## Disturbance 1 (as of 8:00 a.m. EDT)

- Located 850 miles WSW of southern tip of Baja California Peninsula, Mexico
- Environmental conditions appear to be less conducive for further development
- Formation chance through 48 hours: Medium (50%)
- Formation chance through 5 days: Medium (50%)

## Disturbance 2 (as of 8:00 a.m. EDT)

- Located 1,500 miles ESE of the Hawaiian Islands
- Moving WNW at 10-15 mph
- Formation chance through 48 hours: Low (10%)
- Formation chance through 5 days: Low (10%)

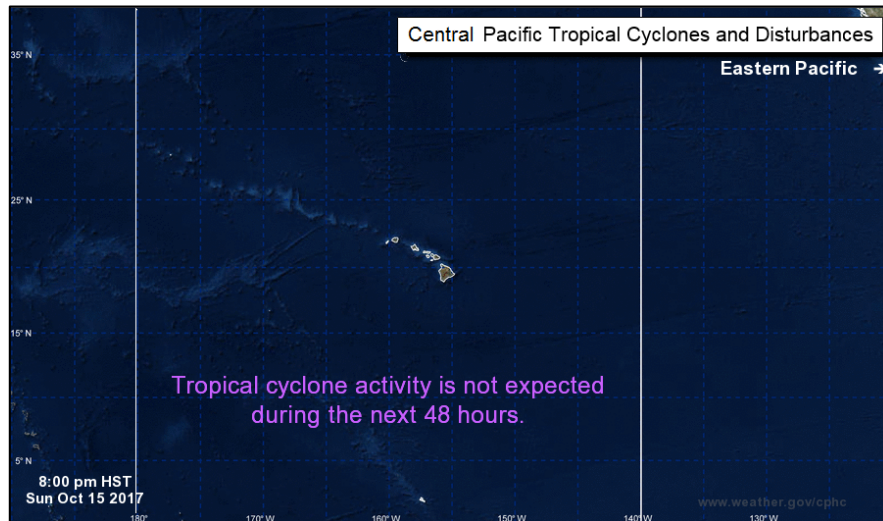




# Tropical Outlook – Central Pacific



FEMA



***Next 48 hours***



***Next 5 days***



# PR/USVI Update



## **Puerto Rico**

- Shelters: 106 (-1) shelters open with 5,141 (-120) occupants
- Disaster Assistance Registrations: 463.4k

## **Power Outages / Restoration**

- 15.0% (+0.4%) of normal peak load restored, up from 9% October 13, 2017
- San Juan Power Plant and Palo Seco Power Plants service restored; 21.2% (+1%) transmission lines or line sections energized; 33.1% (+1.5%) substations energized

## **Communications:**

- Telecommunications restoration plan for main communication system expected October 13, 2017; restoration plans for the remainder will follow

## **Health & Medical**

- 64 Of 67 hospitals open: 41 fully on power grid, 23 on generator
- Open hospital facilities have some form of communication capability
- USNS Comfort conducting logistics and medical support for Arecibo & Aguadilla

## **FEMA Response**

- NRCC: Level I (day shift); Enhanced Watch (night shift)
- National IMAT East-2: deployed to PR
- FEMA Region II & X IMATs: deployed to USVI
- MERS: teams deployed to both USVI & PR

## **U.S. Virgin Islands**

- Shelters: 5 shelters open with 319 (-5) occupants
- Disaster Assistance Registrations: 10.4k

## **Power Outages / Restoration**

- VIWAPA estimates 90% of territory on grid by late December 2017

## **Communications:**

- St. Thomas: Installed repeaters and radio channels for inter-island to provide communications
- St. John: installed communications in clinics and firehouses
- St. Croix: delivery of 20 satellite terminals expected October 18, 2017

## **Health & Medical**

- St. Croix: Department of Health's Charles Harwood Facility offering limited services
- All elements of the 575th Area Support Medical Company operational
- Governor Juan Luis Hospital and Medical Center partially open



# Common Operating Picture



**FEMA**

<b>Weather Hazard/Location</b>	<b><u>Branch I</u></b>	<b><u>Branch II</u></b>	<b><u>Branch III</u></b>	<b><u>Branch IV</u></b>
<b>Thunderstorms</b>	Afternoon thunderstorms all Divisions	Afternoon thunderstorms all Divisions	Morning thunderstorms Divisions G and H Afternoon thunderstorms all Divisions	Afternoon thunderstorms all Divisions
<b>Heavy Rains (Flash/Urban Flooding)</b>	Rainfall up to 2" with locally higher amounts may lead to flash flooding, road flooding, and mudslides	Rainfall up to 2" with locally higher amounts may lead to flash flooding, road flooding, and mudslides	Rainfall up to 2" with locally higher amounts may lead to flash flooding, road flooding, and mudslides	Rainfall up to 2" with locally higher amounts may lead to flash flooding, road flooding, and mudslides
<b>River Flooding</b>	Quick rises on rivers, streams and creeks possible near thunderstorms	Quick rises on rivers, streams and creeks possible near thunderstorms	Quick rises on rivers, streams and creeks possible near thunderstorms	Quick rises on rivers, streams and creeks possible near thunderstorms
<b>Marine</b>	Small Craft Advisory Winds SE 15-20 kt Seas 5 to 8 ft	Small Craft Advisory Winds SE 15-20 kt Seas 5 to 8 ft	Small Craft Advisory Winds SE 15-20 kt Seas 5 to 8 ft	Small Craft Advisory Winds SE 15-20 kt Seas 5 to 8 ft
<b>Air Ops</b>	Ceilings below 2500 feet and visibility below 1 mile in afternoon thunderstorms	Ceilings below 2500 feet and visibility below 1 mile in afternoon thunderstorms	Ceilings below 2500 feet and visibility below 1 mile in thunderstorms	Ceilings below 2500 feet and visibility below 1 mile in afternoon thunderstorms



# High Risk Focus Areas

## Guajataca Dam

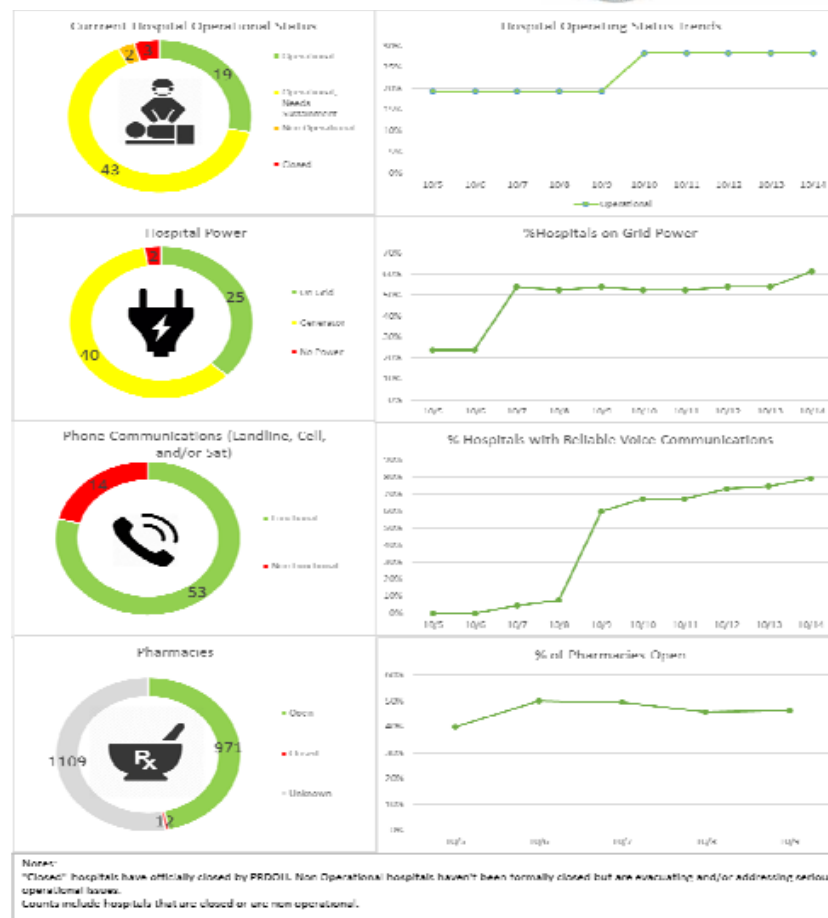
- A **High Risk Dam** before the hurricanes
- **Monitoring for potential rain impacts**
- Water level currently below the spillway
- Focused Activities:
  - Reinforcing the spillway
  - Lowering the water level to allow assessment

## El Yunque Tower

- Maintains 911 connectivity for the eastern 1/3rd of Puerto Rico
- **Monitoring for potential rain impacts**
- Roadway is damaged and unstable
- Aerial Refueling as a stop-gap
- Expedited contract award underway

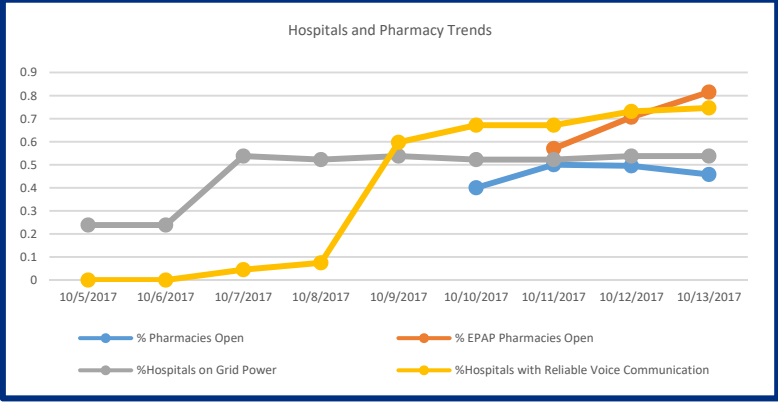
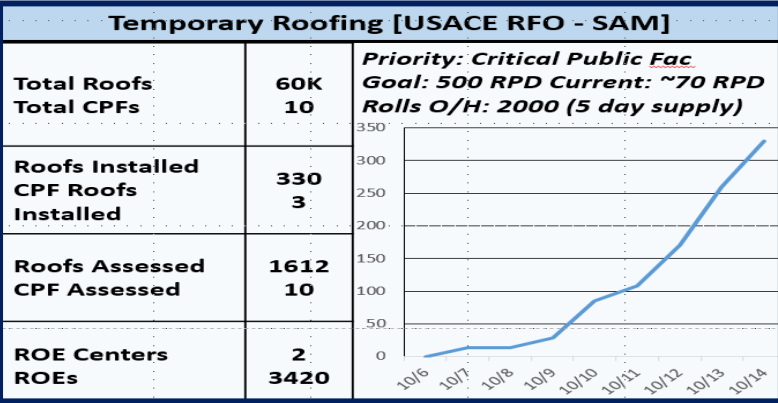
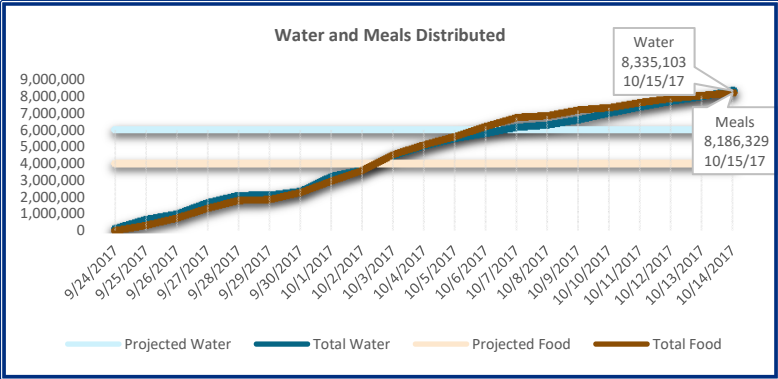
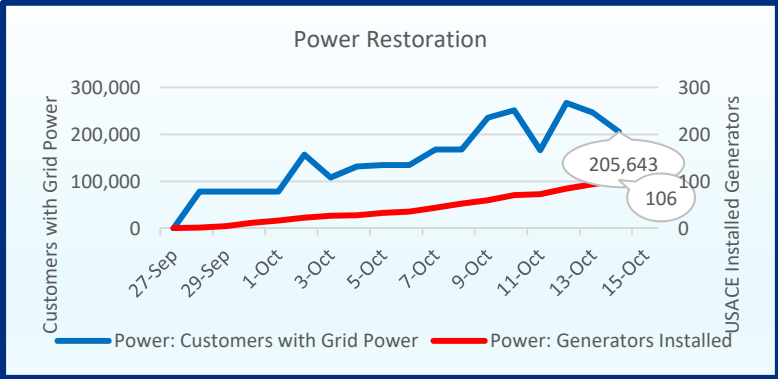


FEMA





# Dashboard





# California Wildfires



FEMA

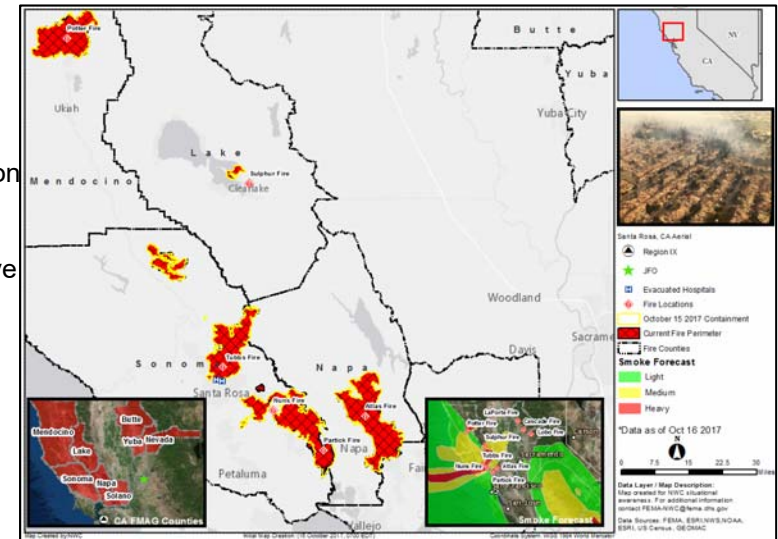
## Situation

Numerous large wildfires continue to burn across much of northern California, causing continued and significant threat to life, property, and commerce in several counties.

- Two hospitals evacuated in Santa Rosa
- High pressure gas lines, hydroelectric infrastructure, water supplies, and communication infrastructures threatened, damaged, or destroyed
- Commercial and agricultural vineyards are threatened, damaged or destroyed
- Eight cell towers are offline; six of these towers will be offline long-term due to extensive damage

## Response

- Major Disaster Declaration FEMA-4344-DR-CA (amended) and 10 FMAG's approved
- Region IX RRCC: not activated; RWC at Steady State (24/7)
- Region IX IMAT-1 deployed to CA EOC; LNO released to home station
- Bothell & Denver MERS deployed to Sacramento, CA
- Public Health Emergency declared by Secretary of HHS
- Governor declared a state of emergency for nine counties
- CA EOC at Full Activation
- 51 (+1) ARC and independent shelters open with 4,234 (+3) occupants (ESF-6)





# Wildfire Summary



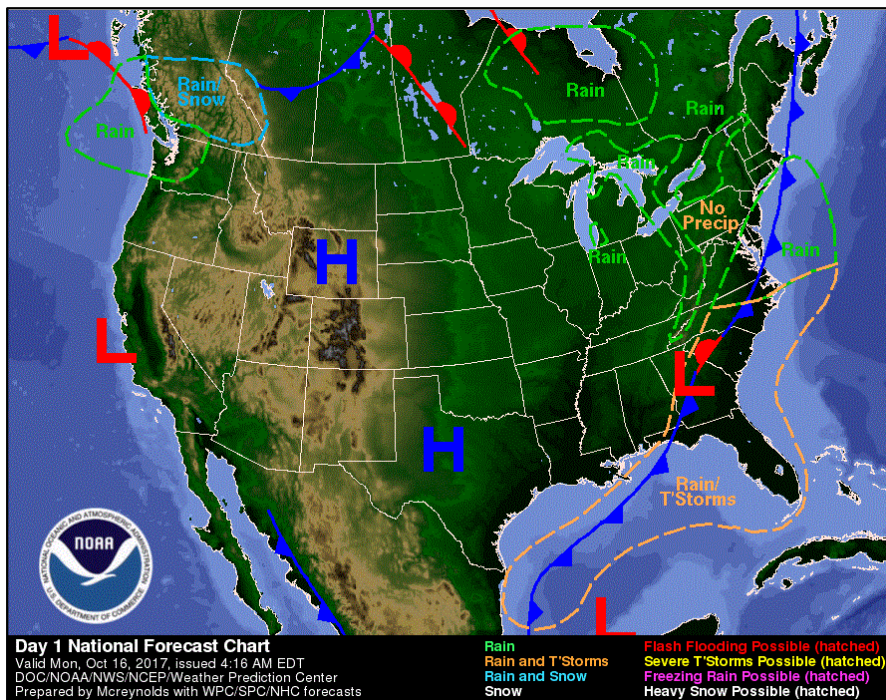
FEMA

Complex	Fire Name (County)	FMAG # (Approved Date)	Acres Burned	Percent Contained	Evacuations	Structures			Fatalities / Injuries
						Threatened	Damaged	Destroyed	
California									
*Central LNU Complex	Tubbs (Sonoma / Napa)	5215-FM-CA (October 9, 2017)	106,272 (+11,902)	30% (+5)	Mandatory	24,914 (22,344 homes)	159 (135 homes)	3,947 (3,298 homes)	22 / 0
	Nuns (Sonoma) Moved from Southern LNU Complex	5220-FM-CA (October 9, 2017)							
*Southern LNU Complex (FINAL)	Atlas (Napa / Solano)	5214-FM-CA (October 9, 2017)	51,057	65% (+9)	Lifted	5,000 homes	69 (40 homes)	479 (303 homes)	6 / 0
	Partrick (Napa / Sonoma) Combined with Nuns	5222-FM-CA (October 9, 2017)							
*Mendocino Lake Complex	Potter Valley (Mendocino)	5219-FM-CA (October 9, 2017)	38,007 (+800)	47% (+10)	Mandatory	75 homes	46 (21 homes)	681 (433 homes)	8 / 1
	Sulphur (Lake)	5221-FM-CA (October 9, 2017)							

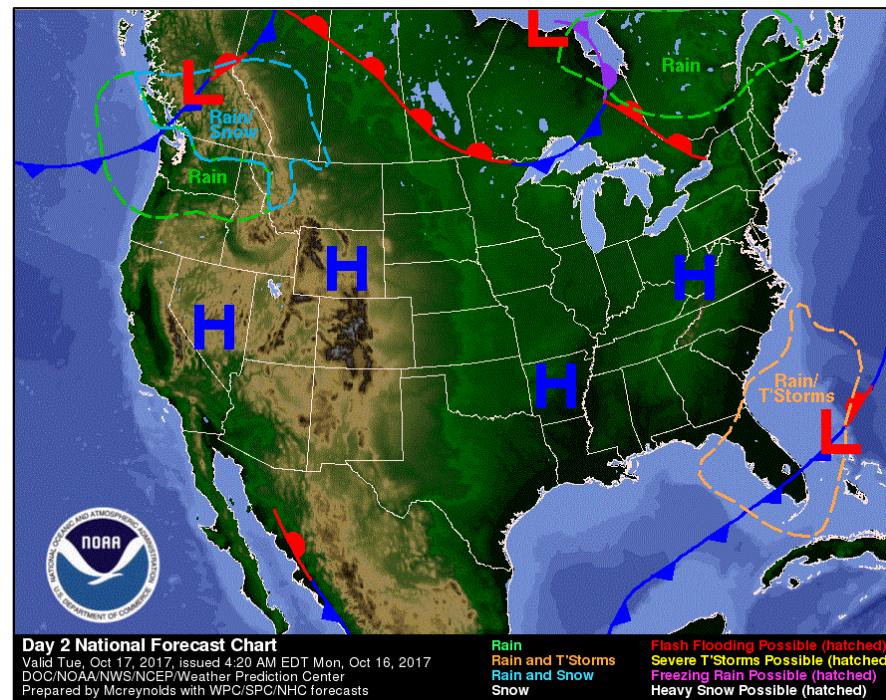
\*Note: Complex fires may contain fires that have not received FMAGs; reduction in acreage is due to more accurate fire perimeters and continued changes to individual fires within the complex; some fires are moving out of one complex and into another



# National Weather Forecast



*Today*



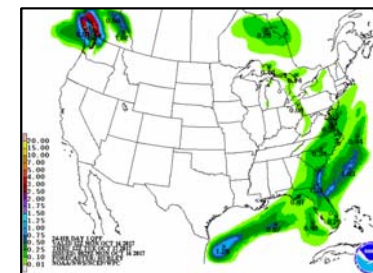
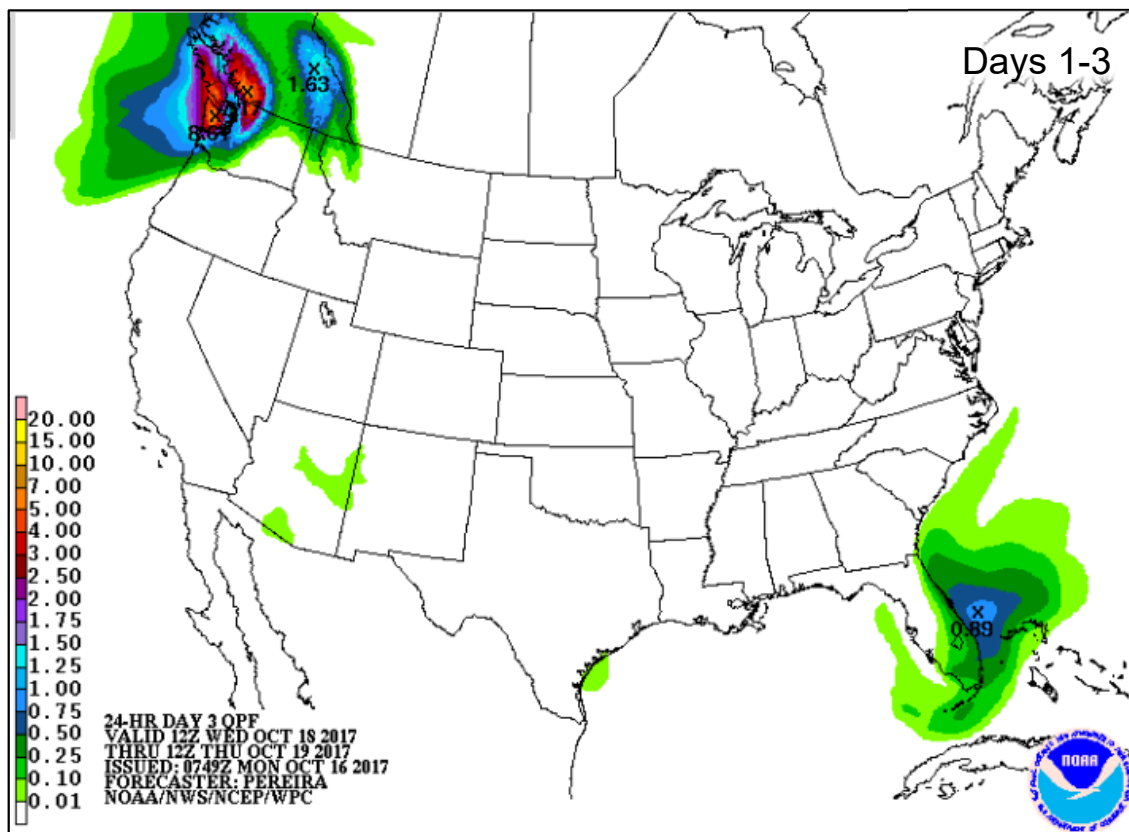
*Tomorrow*



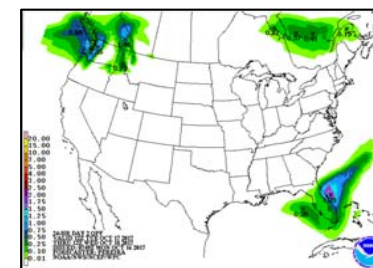
# Precipitation Forecast & Flash Flood Risk



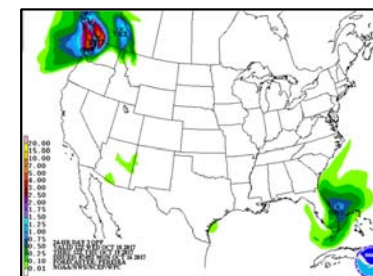
FEMA



Day 1



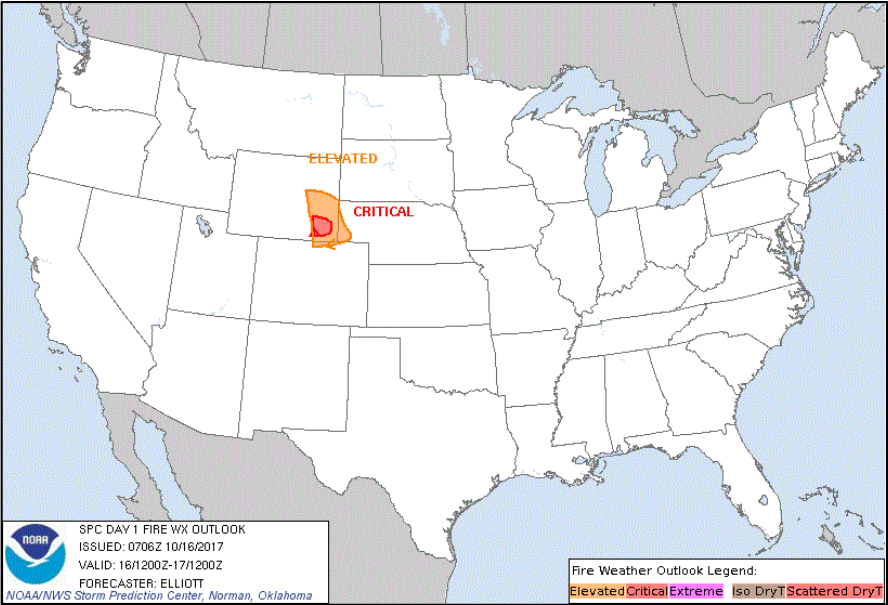
Day 2



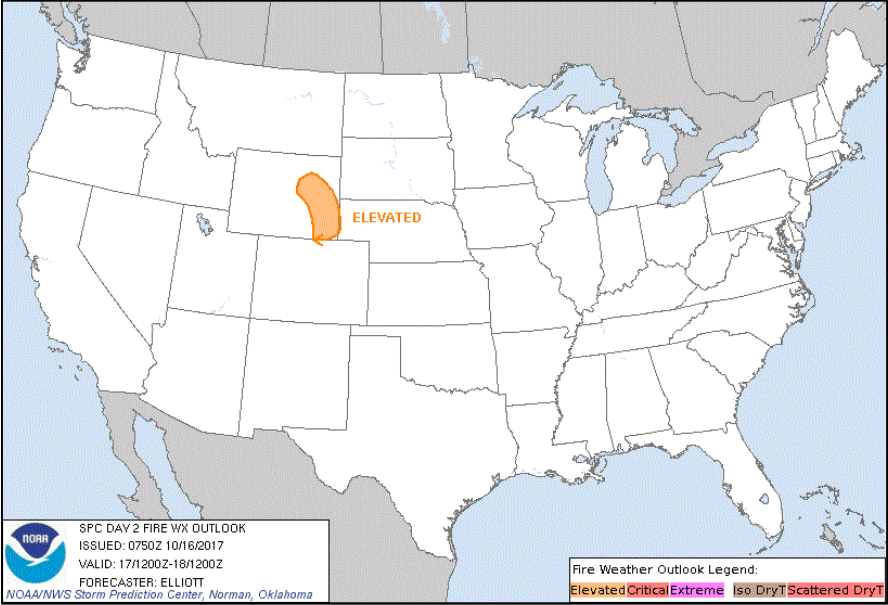
Day 3



# Fire Weather Outlook



**Today**



**Tomorrow**



# Disaster Requests & Declarations



**FEMA**

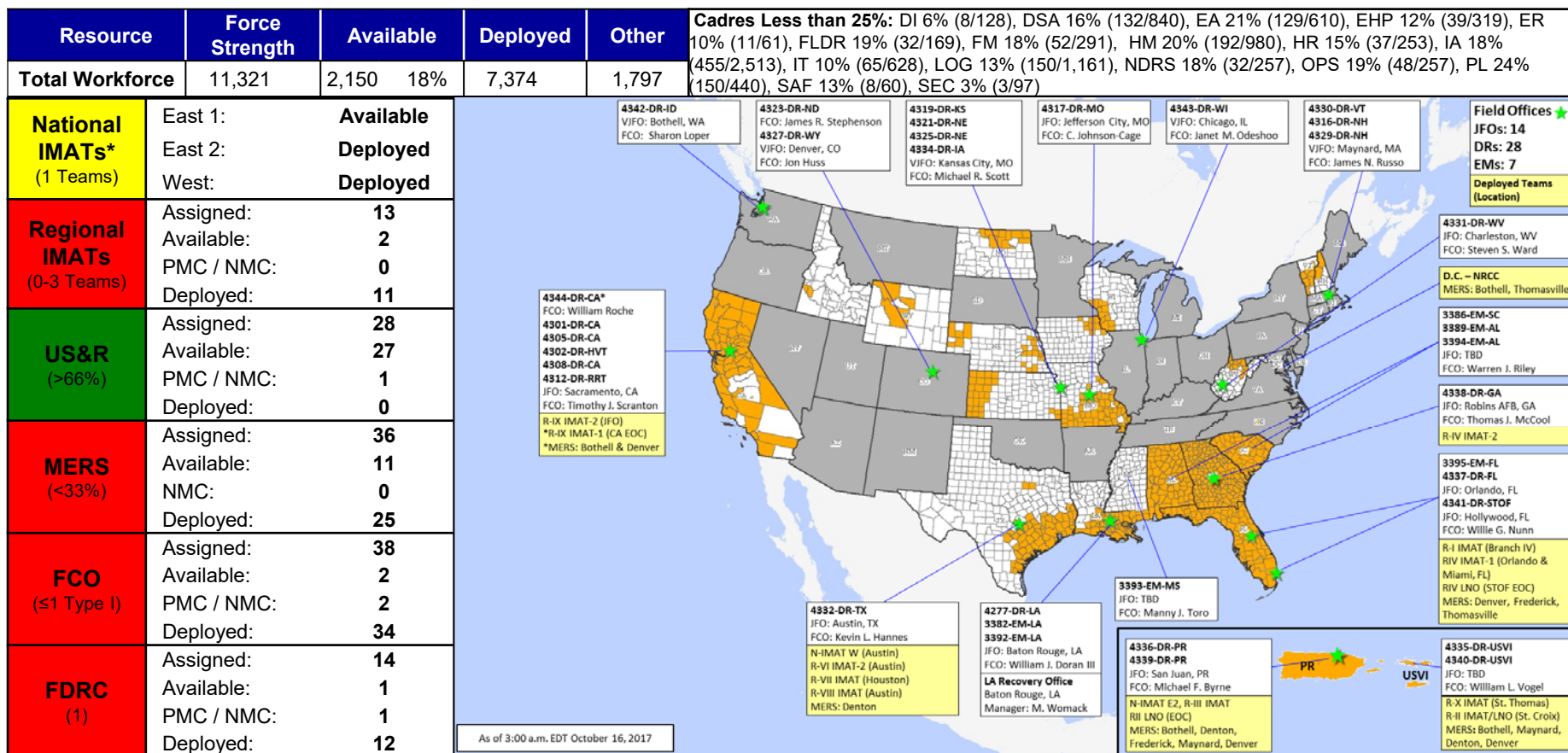
Declaration Requests in Process					Requests APPROVED (since last report)	Requests DENIED (since last report)
7	IA	PA	HM	Date Requested	0	0
NY – DR (Expedited) Flooding	X	X	X	July 6, 2017		
ND – DR Severe Storm		X	X	August 24, 2017		
KS – DR Severe Storms, Straight-line Winds, and Flooding		X	X	August 31, 2017		
IL – DR Severe Storms and Flooding	X		X	August 31, 2017		
NY – DR Severe Storms, Tornadoes, and Flooding	X	X	X	August 31, 2017		
LA – DR Hurricane Harvey	X	X	X	September 25, 2017		
SC – DR Hurricane Irma		X	X	September 27, 2017		



# Readiness – Deployable Teams and Assets



**FEMA**



\*B-2 Status: Assemble ≤ 2-hrs, On Site ≤ 18-hrs; B-48 Status: Assemble and deploy ≤ 48hrs; Charlie Status: No team assemble time requirement



# FEMA Readiness – Activation Teams



Resource	Status	Total	Status	Activated Team	Activation Level	Activation Times	Reason/Comments
NWC		5	Not Activated				
NRCC		2	Activated	Gold	Level I Enhanced Watch	Day shift Night shift	Tropical Activity – Atlantic
HLT		1	Activated				Hurricane Season
RWCs/MOCs		10	Steady State				
RRCCs		10	Not Activated				

Back-up Region: V, X & VI



# Regional Back-up Slide



**FEMA**

Criteria	Definition	Weighting			FEMA Region									
					I	II	III	IV	V	VI	VII	VIII	IX	X
All-Hazard Threats	Likelihood of imminent disaster that will exhaust the staffing resources of the region.	Steady State (15)	Localized (9)	Multiple (3)	15	3	9	3	15	15	15	15	3	15
Personnel Capabilities (IMAT, DA Work Force, etc.)	Availability of the extra staff resources.	Multiple Teams (20)	Extra Team (12)	<1 Full Team (4)	4	4	4	4	12	12	4	4	4	4
Number of JFOs Open in Region	Number of open or potential JFOs within the region that require staffing over the next 2 weeks relative to the number of states in the region.	≤ 25% (5)	≤ 50% ≥ (3)	≥ 75% (1)	5	3	5	1	5	3	3	5	5	5
Number of Declared Disasters or Emergencies in the Region	Number of active or potential disasters/emergencies being worked within the region that require staffing over the next 2 weeks relative to the number of states in the region.	≤ 25% (10)	≤ 50% ≥ (6)	≥ 75% (2)	0	2	10	2	10	2	2	6	2	10
Totals					24	12	28	10	42	32	24	30	14	34

**Regions V, X & VI**





# FEMA

**FEMA's mission is to support our citizens and first responders to ensure that as a nation we work together to build, sustain, and improve our capability to prepare for, protect against, respond to, recover from, and mitigate all hazards.**