



FEMA

Daily Operations Briefing

Monday, November 21, 2016

8:30 a.m. EST

Significant Activity – Nov 20-21



FEMA

Significant Events: None

Tropical Activity:

- Atlantic – Tropical Depression 16
- Eastern Pacific – Tropical cyclone activity not expected during the next 48 hours
- Central Pacific – No tropical cyclones expected through Tuesday evening
- Western Pacific – No activity affecting U.S. territories

Significant Weather:

- Heavy Snow – Great Lakes, portions of CO & WY
- Freezing Rain – Northern Plains, Upper Mississippi Valley
- Snow – Central Appalachians to Great Lakes & Northeast
- Rain and Snow – Northern Intermountain, Central Rockies, Central/Northern Plains, Northeast
- Rain and thunderstorms – Southern California, Great Basin, Central/Southern Plains
- Red Flag Warnings – FL
- Space Weather – Past 24 hours: none observed; Next 24 hours: Minor G1 Geomagnetic storms expected

Declaration Activity:

- FMAG approved – Southeastern Kentucky Complex, KY
- FMAG approved – East Miller Cove, TN
- FMAG approved – Chestnut Knob, NC

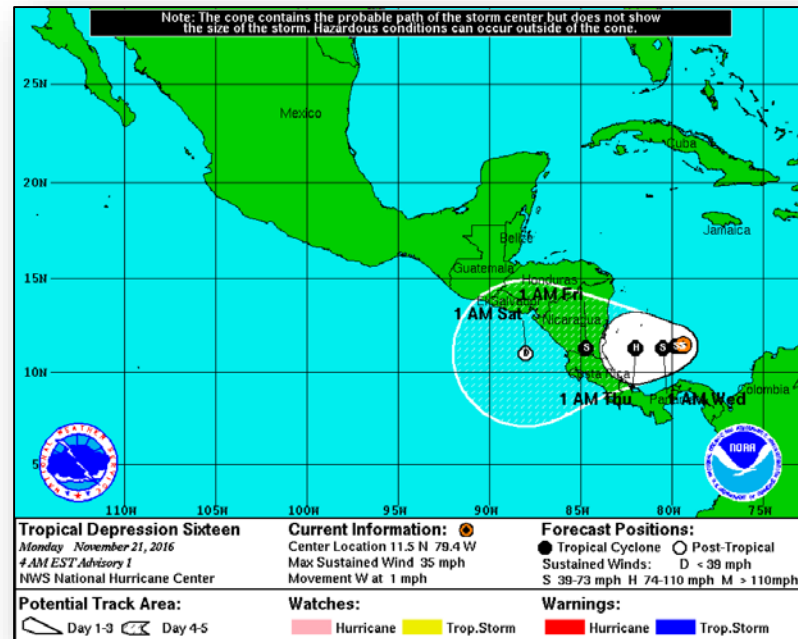
Tropical Outlook – Atlantic



FEMA

Tropical Depression 16 (Advisory #1 as of 4:00 a.m. EST)

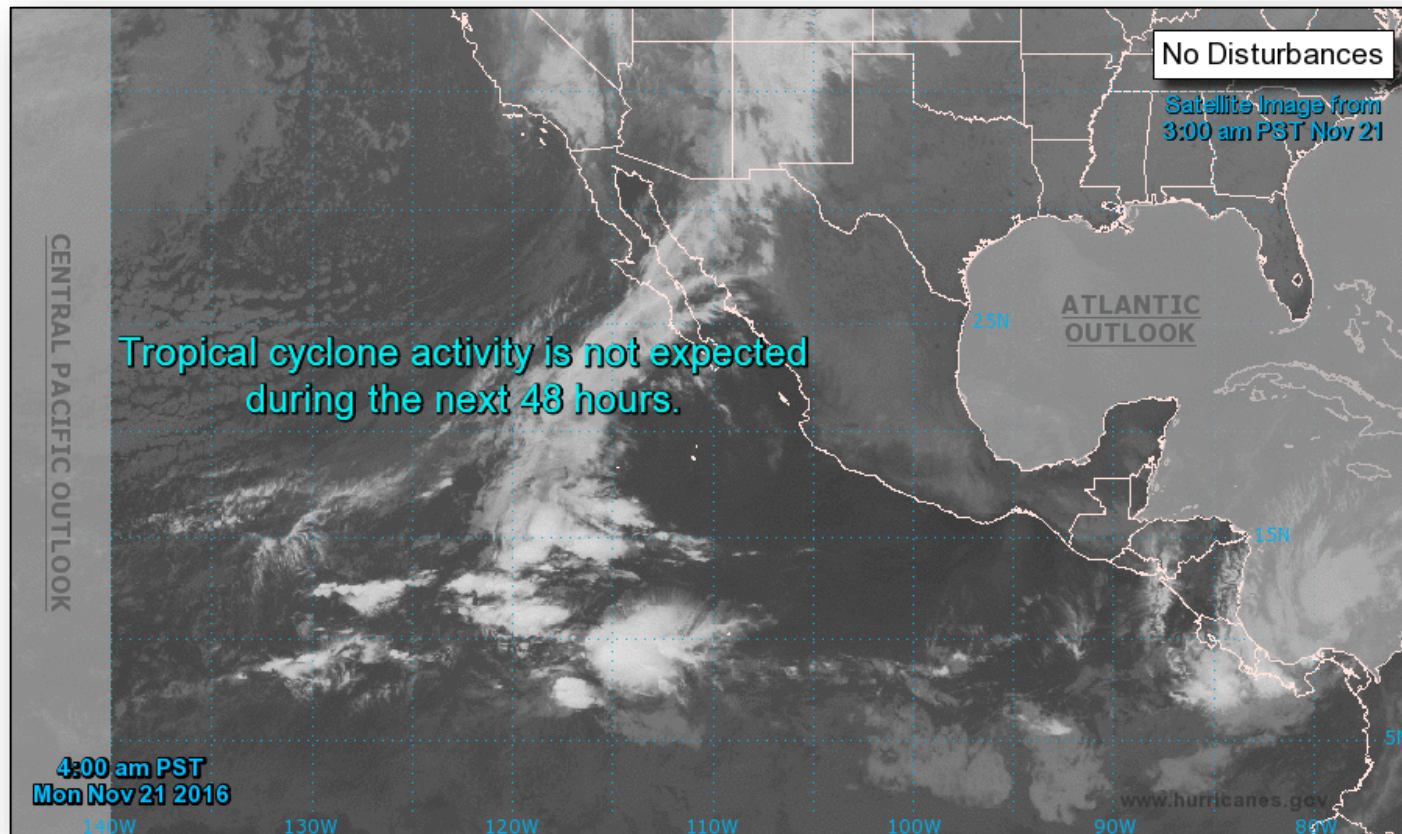
- Located 170 miles ESE of San Andres Island
- Currently stationary; max sustained winds 35 mph
- Expected to slowly move West on Tuesday
- Slow strengthening forecast in next 48 hours
- Expected to become a tropical storm today or tonight



Tropical Outlook – Eastern Pacific



FEMA

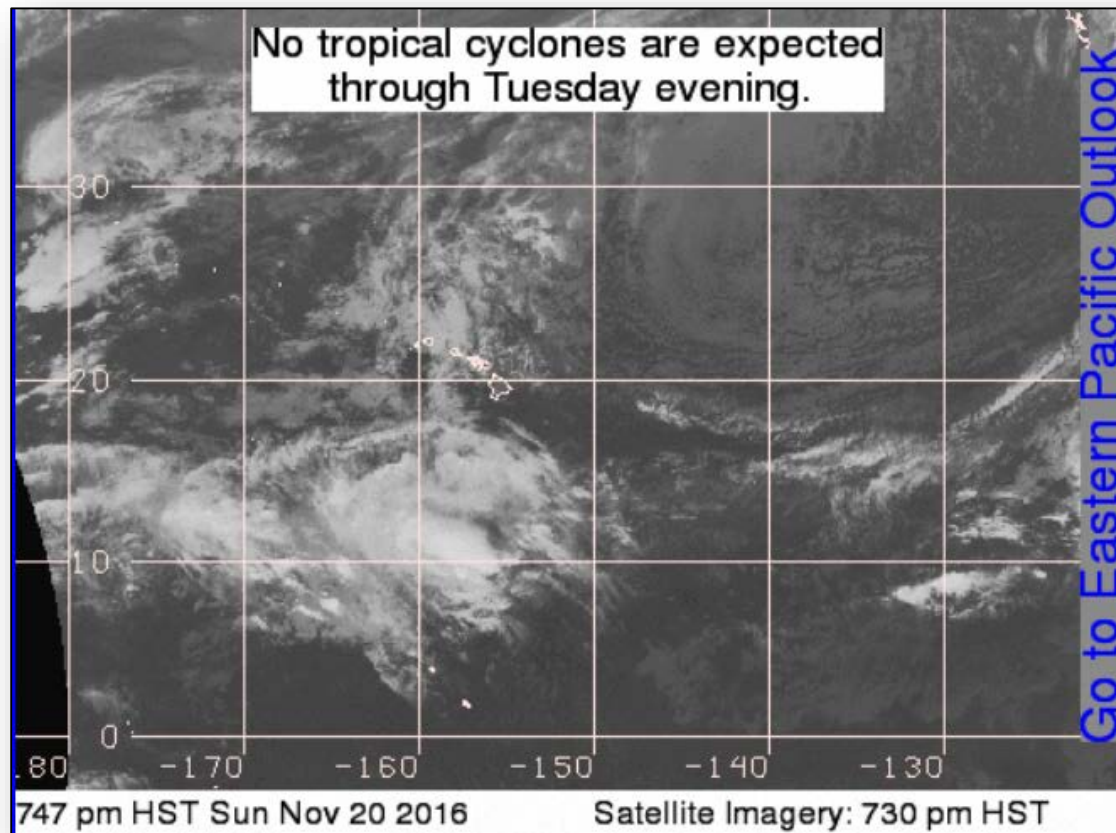




Tropical Outlook – Central Pacific



FEMA

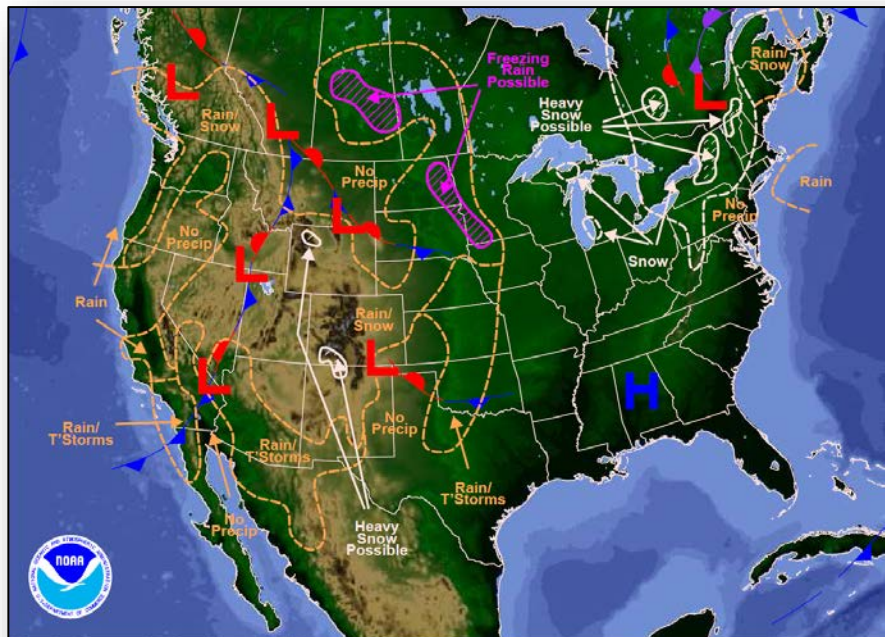




National Weather Forecast

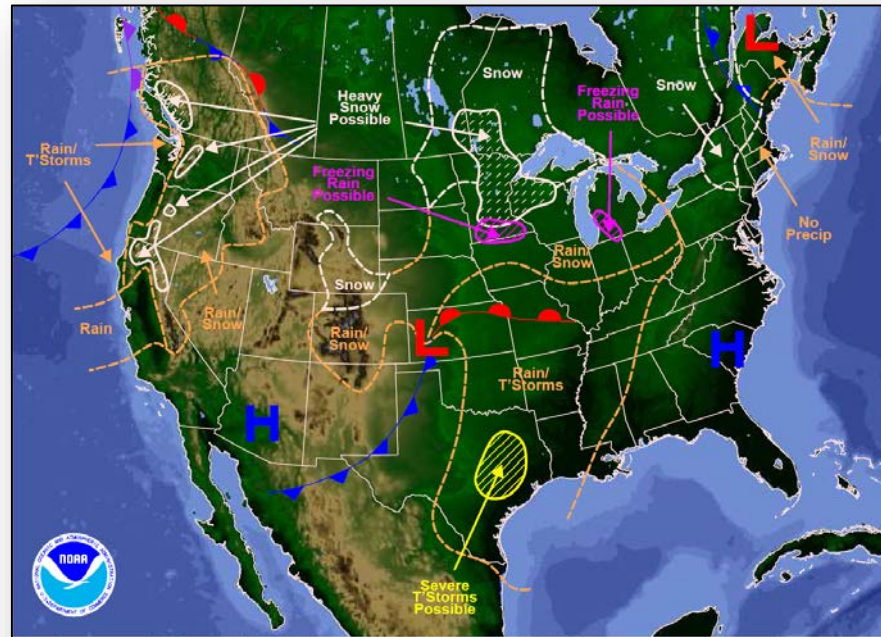


FEMA



Weather Forecast for Mon, Nov 21, 2016, issued 4:37 AM EST
DOC/NOAA/NWS/NCEP/Weather Prediction Center
Prepared by McReynolds based on WPC, SPC and NHC forecasts

Today



Weather Forecast for Tue, Nov 22, 2016, issued 4:41 AM EST Mon, Nov 21, 2016
DOC/NOAA/NWS/NCEP/Weather Prediction Center
Prepared by McReynolds based on WPC, SPC and NHC forecasts

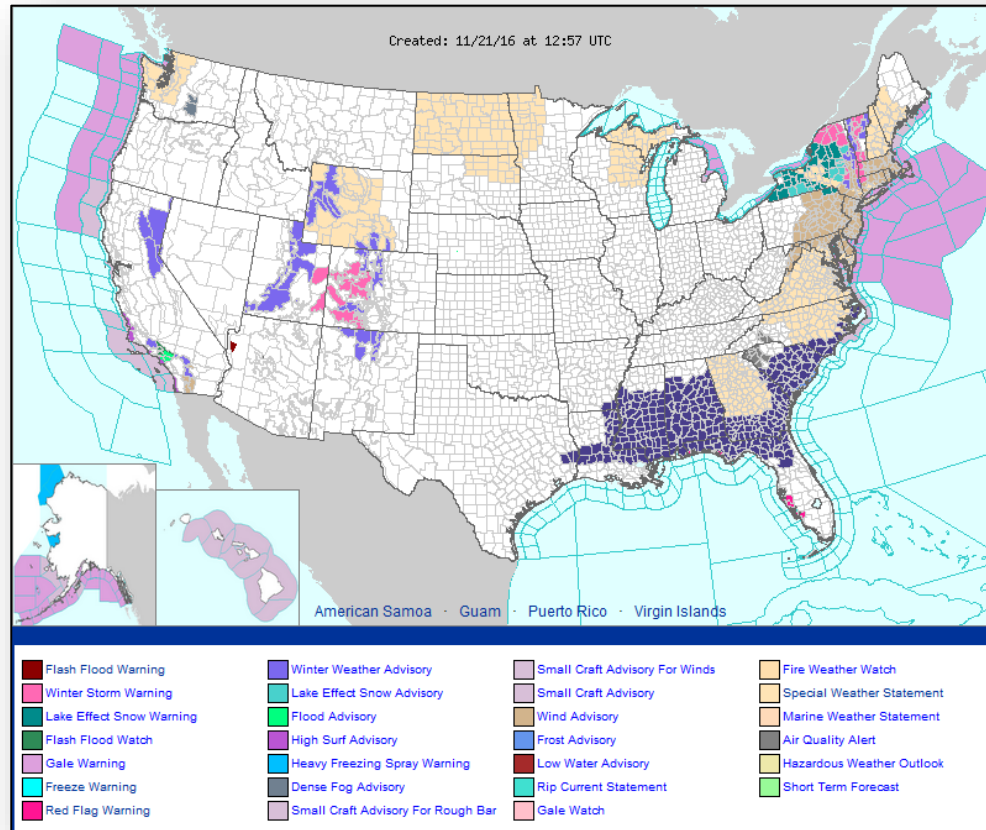
Tomorrow



Active Watches and Warnings



FEMA

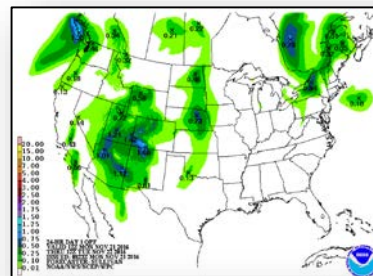
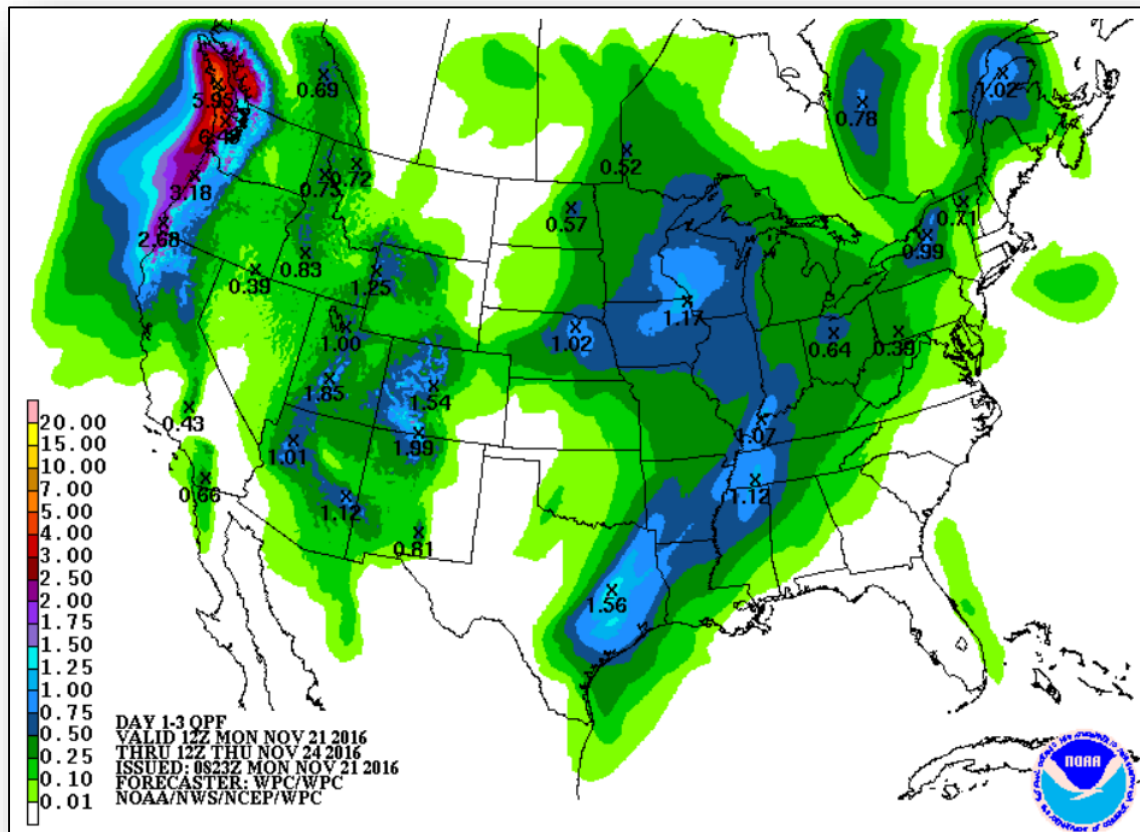




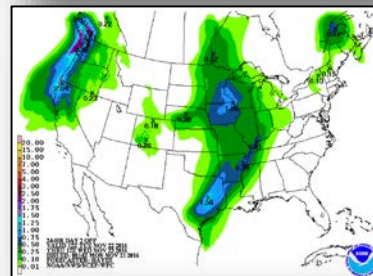
Precipitation Forecast – Days 1-3



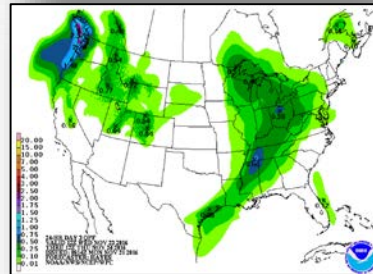
FEMA



Day 1

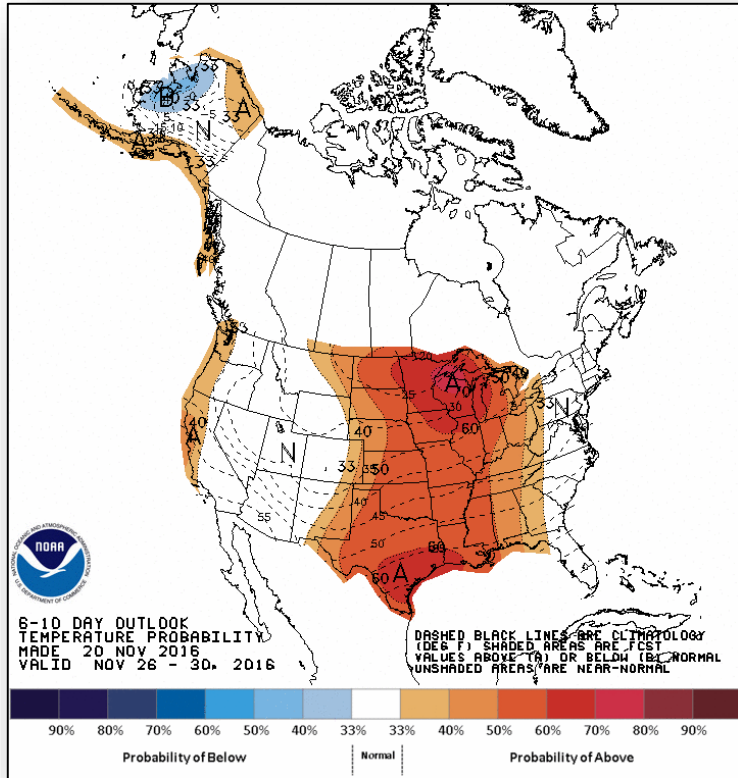


Day 2

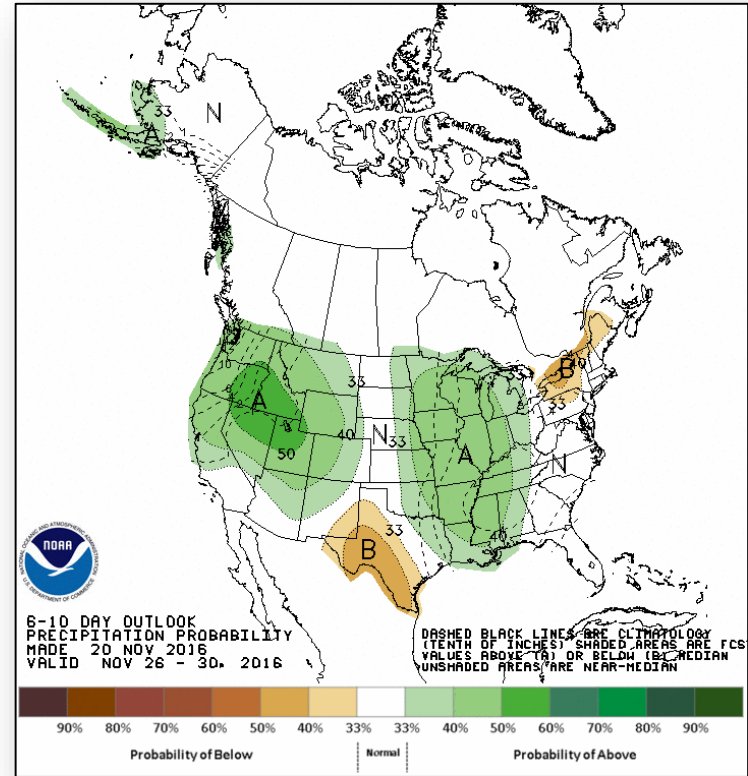


Day 3

6-10 Day Outlooks



6 - 10 Day Temperature Probability



6 - 10 Day Precipitation Probability

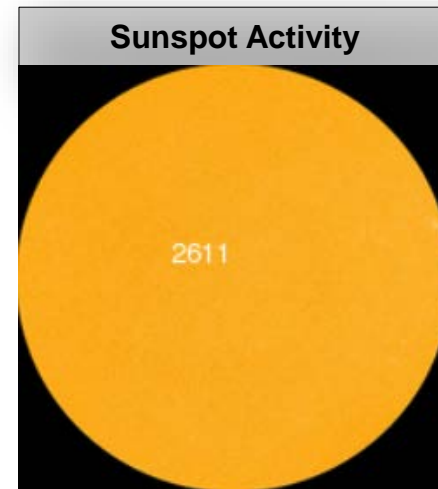
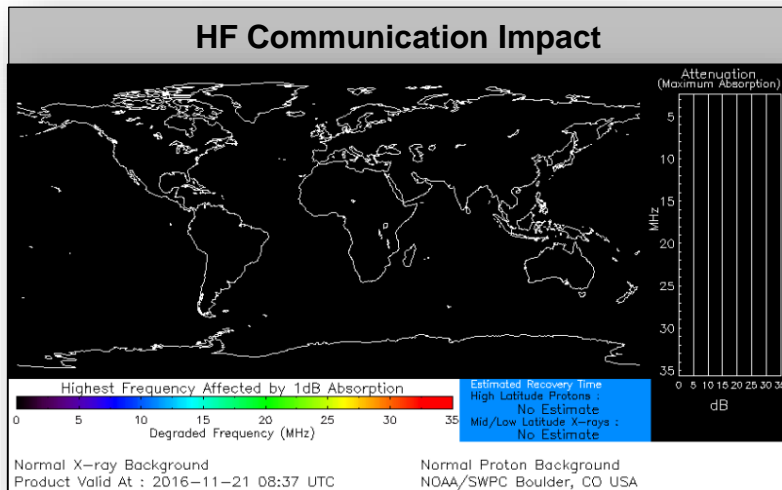


Space Weather



FEMA

	Space Weather Activity	Geomagnetic Storms	Solar Radiation	Radio Blackouts
Past 24 Hours	None	None	None	None
Next 24 Hours	Minor	G1	None	None
For further information on NOAA Space Weather Scales refer to http://www.swpc.noaa.gov/noaa-scales-explanation				

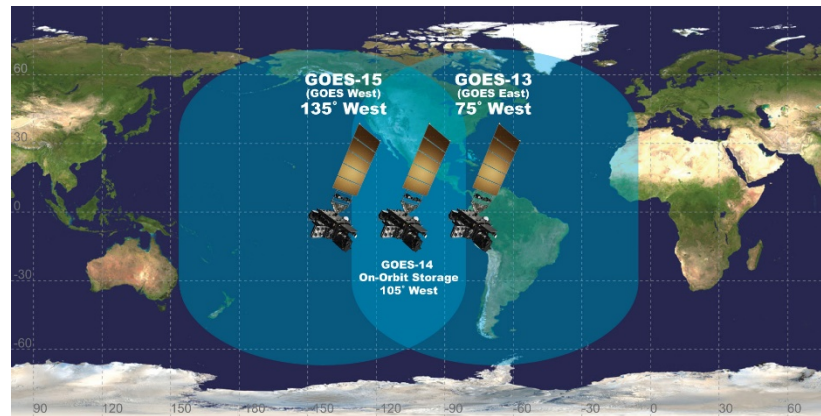


NOAA's GOES Satellites



FEMA

- GOES-R, NOAA's next-generation geostationary weather satellite, successfully lifted off from Cape Canaveral, FL at 6:42 p.m. EST Saturday, November 19
- GOES-R will be placed in orbit about 22,250 miles from Earth, where it will undergo an extended validation phase for about one year, then it will transition to operations
- GOES-R's operational orbit has not yet been determined, and will be based on the health and performance of the GOES constellation
- NOAA's satellites currently operate from two primary locations:
 - GOES-East located at 75°W provides most of the U.S. weather information
 - GOES-West located at 135°W over the Pacific Ocean
 - NOAA also maintains an on-orbit spare GOES satellite in the event of an anomaly or failure of GOES East or West





Anticipated GOES-R Benefits



FEMA

- Improved hurricane track and intensity forecasts
- Increased thunderstorm and tornado warning lead time
- Improved aviation flight route planning
- Improved air quality warnings
- Better data for long-term climate variability studies
- Better fire detection and intensity estimation
- Better detection of heavy rainfall and flash flooding risk
- Better monitoring of space weather to improve geomagnetic storm forecasting
- Continued participation in Search and Rescue Satellite Aided Tracking (SARSAT)

3X MORE CHANNELS



Improves every product from current GOES Imager and will offer new products for severe weather forecasting, fire and smoke monitoring, volcanic ash advisories, and more.

4X BETTER RESOLUTION



The GOES-R series of satellites will offer images with greater clarity and 4x better resolution than earlier GOES satellites.

5X FASTER SCANS



Faster scans every 30 seconds of severe weather events and can scan the entire full disk of the Earth 5x faster than before.

Chestnut Knob Fire – NC



FEMA

Fire Name (County)	FMAG # / Approved	Acres burned	% Contained	Evacuations (Residents)	Structures			Fatalities / Injuries
					Threatened	Damaged	Destroyed	
Chestnut Knob (Burke)	5164-FM-NC Nov 19, 2016	6,433	45%	Voluntary (1,192)	417 (400 homes)	0	0	0 / 0

Situation at time of FMAG approval (11:05 p.m. EST, November 19)

- Fire started November 6, 2016, 10 miles north of Morganton, NC
- Threatening Morganton, Pleasant Grove, Enola, and Lake Lure (combined pop. 1,192)
- 417 structures (400 homes) threatened; none damaged or destroyed
- Also threatening power supply for Burke County 911 Complex/tower
- Voluntary evacuations in effect for 1,192 people
- 1 shelter open with no occupants (*FEMA Region IV*)
- No injuries or fatalities



Response

- NC EOC at Partial Activation (wildfires)
- Region IV RWC remains at Watch/Steady State

East Miller Cove Fire – TN FINAL

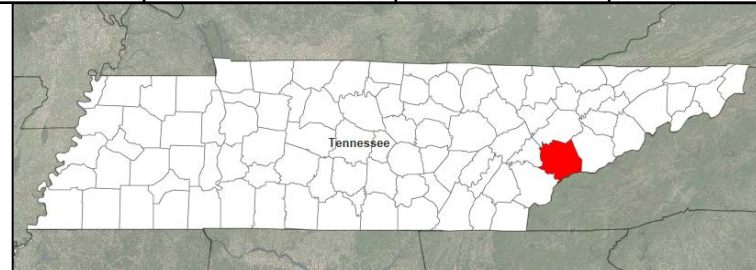


FEMA

Fire Name (County)	FMAG # / Approved	Acres burned	% Contained	Evacuations (Residents)	Structures			Fatalities / Injuries
					Threatened	Damaged	Destroyed	
East Millers Cove (Blount)	5165-FM-TN Nov 19, 2016	1,492	82%	Lifted	100 homes	0	0	0 / 0

Situation at time of FMAG approval (11:15 p.m. EST, November 19)

- Fire started November 17, 2016, near Walland and Townsend, TN
- 400 homes threatened; none damaged or destroyed
- Also threatening an RV park, elementary school, church, and post office
- Evacuations in effect for 200 homes
- One shelter open with unknown number of occupants (FEMA Region IV)
- No injuries or fatalities



Response

- TN EOC at Partial Activation (wildfires)
- Region IV RWC remains at Watch/Steady State

Southeastern KY Complex Fire – FINAL



FEMA

Fire Name (County)	FMAG # / Approved	Acres burned	% Contained	Evacuations (Residents)	Structures			Fatalities / Injuries
					Threatened	Damaged	Destroyed	
Southeastern KY Complex Fire (VARIOUS)	5166-FM-KY Nov 20, 2016	9,274	80%		30	0	0	0 / 0

Situation at time of FMAG approval (2:00p.m. EST, November 20)

- Fire started on 01 November, 2016
- Nolansburg (Harlan County); Ellen Lane (Knox County); Number One Hill (Letcher County); Walters Road (Pike County)
- No fatalities or injuries

Response

- KY EOC at Partial Activation (multiple wildfires)
- Region IV RWC remains at Watch/Steady State



Wildfire Summary



FEMA

Fire Name (Counties)	FMAG # (Approved Date)	Acres burned	% Contained	Evacuations (Residents)	Structures			Fatalities / Injuries
					Threatened	Damaged	Destroyed	
North Carolina (1)								
Party Rock (Rutherford & Buncombe)	5161-FM-NC November 11, 2016	7,171	45% (+9)	Mandatory	1,050 (1,000 homes)	0	0	0 / 0
South Carolina (1)								
Pinnacle Mountain (Pickens)	5162-FM-SC November 12, 2016	5,439	35%	Voluntary	700 (380 homes)	0	1	0 / 0

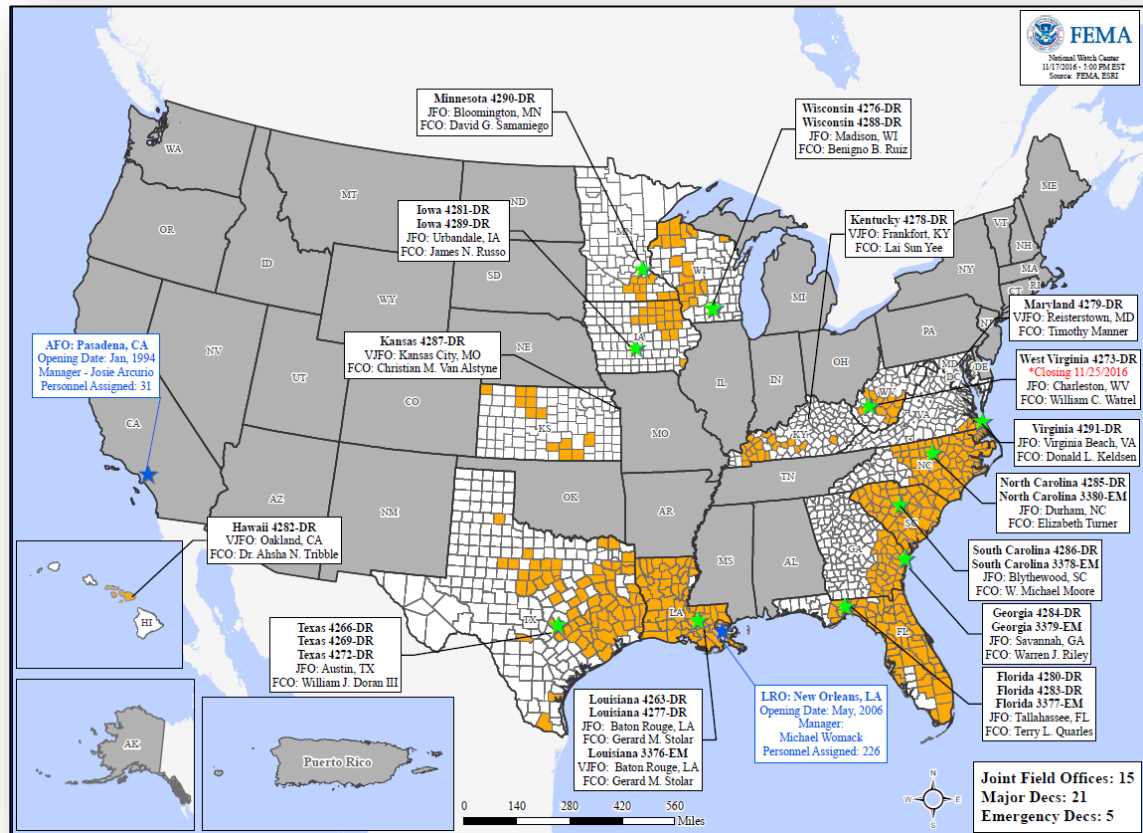
Disaster Requests & Declarations



FEMA

Declaration Requests in Process		Requests APPROVED (since last report)	Requests DENIED (since last report)
3	Date Requested	0	0
DE – DR Severe Storms and Flooding	October 27, 2016		
Navajo Nation – DR (Appeal) Flooding	November 9, 2016		
PA – DR Severe Storms and Flooding	November 17, 2016		

Open Field Offices





Readiness – Deployable Teams and Assets



FEMA

Resource	Status	Total	FMC Available		Partially Available	Not Available	Detailed, Deployed, Activated	Comments	Rating Criteria
FCO		35	3	9%	0	2	30		OFDC Readiness: FCO Green Yellow Red Type 1 3+ 2 1 Type 2 4+ 3 2 Type 3 4+ 3 2 FDRC 3 2 1 • Green = Available / FMC • Yellow = Available / PMC • Red = Out-of-Service • Blue = Assigned / Deployed
FDRC		10	3	30%	0	1	6		
US&R		28	28	100%	0	0	0		
National IMAT		3	2	66%	0	0	1	East 2 to LA (DR-4277)	• Green: 3 available • Yellow: 1-2 available • Red: 0 avail (<i>Individual N-IMAT red if 50% of Section Chiefs and / or Team Leader is unavailable for deployment.</i>)
Regional IMAT		13	5	38%	2	0	6	Region VI-2 (Reconstituting through Nov 30) Region VIII (Reconstituting through Nov 28) <u>Deployed:</u> Region I to NC (DR-4285) Region III to VA (DR-4291) Region IV-1 to NC (DR-4285) Region IV-2 to FL (DR-4280/4283) Region V to MN (DR-4290) Region VII to IA (DR-4281)	• Green: >6 teams available • Yellow: 4 - 6 teams available • Red: < 4 teams available <i>R-IMAT also red if TL Ops / Log Chief is unavailable & has no qualified replacement</i>
MERS		18	13	72%	0	0	5	<u>Assets are supporting:</u> GA (DR-4284), NC (DR-4285)	• Green = >66% available • Yellow = 33% to 66% available • Red = <33% available

Readiness – National and Regional Teams



FEMA

Resource	Status	Total	FMC Available		Partially Available	Not Available	Status	Comments	Rating Criteria
NWC		5	5	100%	0	0	Watch/ Steady State		<ul style="list-style-type: none"> • Green = FMC • Yellow = PMC • Red = NMC
NRCC		2	2	100%	0	0	Not Activated		
HLT		1	1	100%	0	0	Activated		
RRCCs		10	10	100%	0	0	Not Activated		
RWCs/MOCs		10	10	100%	0	0	Watch/ Steady State		



FEMA

FEMA's mission is to support our citizens and first responders to ensure that as a nation we work together to build, sustain, and improve our capability to prepare for, protect against, respond to, recover from, and mitigate all hazards.