



FEMA

Daily Operations Briefing

Sunday, October 9, 2016

8:30 a.m. EDT

Significant Activity – Oct 8 - 9



Significant Events: Post-Tropical Cyclone Matthew

Tropical Activity:

- Atlantic – Post-Tropical Cyclone Matthew; Tropical Storm Nicole
- Eastern Pacific – Disturbance 1 – Low (20%); Disturbance 2 – Low (20%)
- Central Pacific – Disturbance 1 – Low (20%)
- Western Pacific – No tropical cyclone activity affecting U.S. interests

Significant Weather:

- Flash flooding possible – Southeast to Mid-Atlantic
- Rain and thunderstorms – Southwest to Southern Plains; coastal Southeast to Mid-Atlantic
- Rain – Pacific Northwest to Northern Rockies; Southeast to Northeast
- Rain and snow – Central Rockies
- Critical/Elevated Fire Weather – Lower Mississippi to Tennessee valleys
- Red Flag Warnings – Lower Mississippi to Tennessee valleys
- Space weather – Past 24 hours – none observed; next 24 hours – none predicted

Earthquake Activity: No significant activity

Declaration Activity:

- Major Disaster Declaration approved - FL
- Major Disaster Declaration approved - GA

Post-Tropical Cyclone Matthew

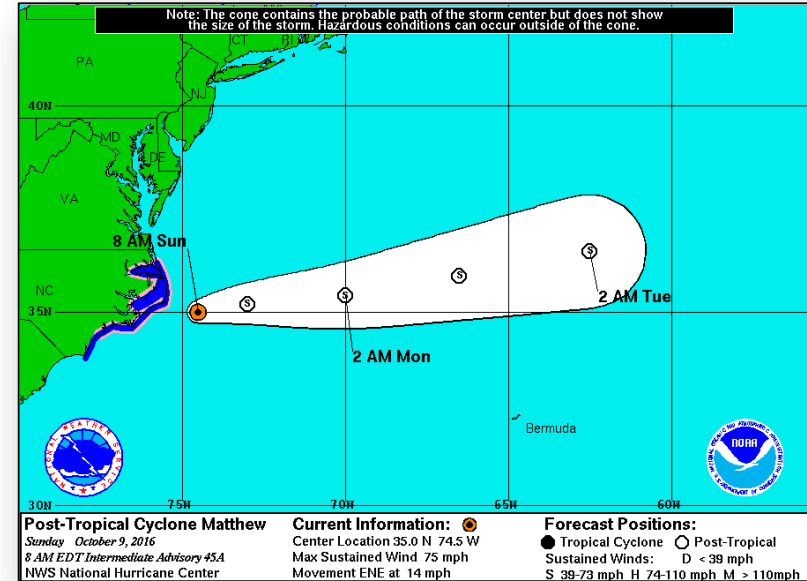


Post-Tropical Cyclone Matthew (Advisory #4A as of 8:00 a.m. EDT)

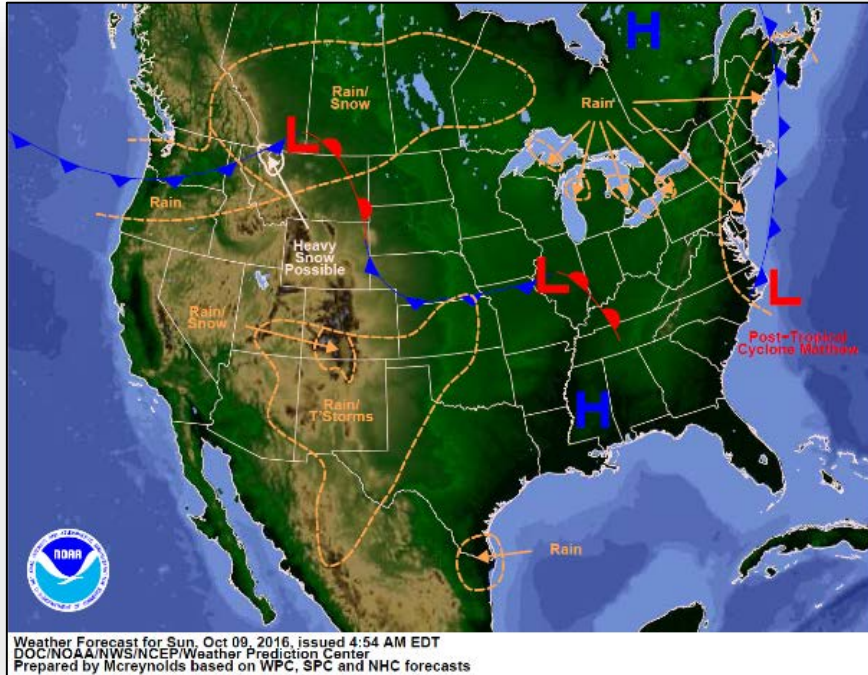
- Located 60 miles ESE of Cape Hatteras, NC
- Moving ENE at 14 mph
- A motion ENE or E expected next couple of days
- On the forecast track, the center will move farther offshore of coast of NC Outer Banks today and tonight
- Maximum sustained winds 75 mph
- Gradual weakening forecast next 48 hours
- Hurricane force winds extend 70 miles; tropical storm force winds extend 240 miles
- Hurricane Watch in effect for north of Surf City to Duck, and Pamlico and Albemarle Sounds
- Tropical Storm Warning in effect for Cape Fear to Duck, and Pamlico and Albemarle Sounds

Flooding

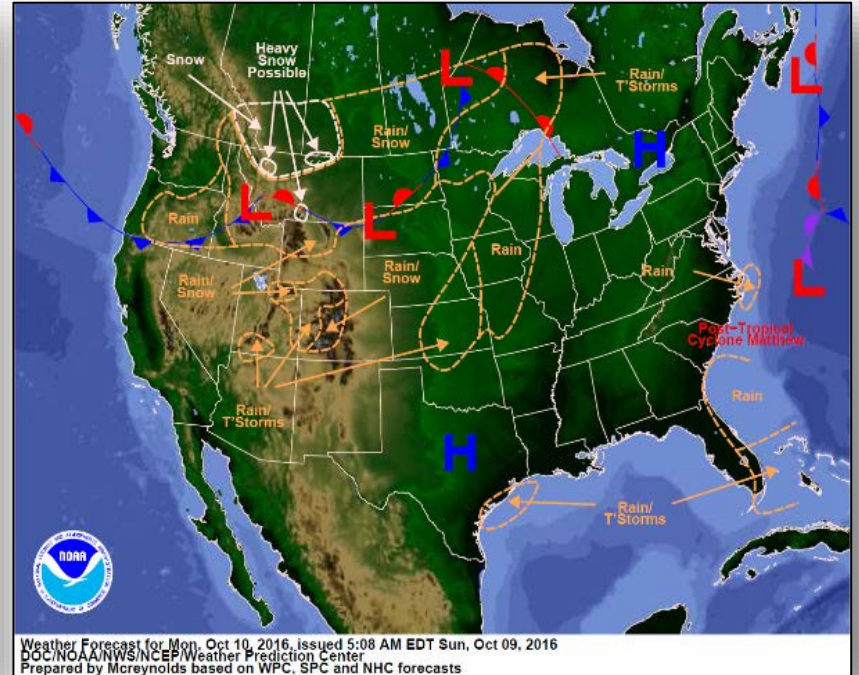
- Extensive and significant freshwater flood event forecast
- Between 10-20 inches of rain have already been reported, mainly from Savannah, GA to southeast VA
- Significant river flooding expected over coastal plains of the Carolinas; risk of numerous rivers reaching moderate to major flood levels today
- Rivers will be slow to recede, with flooding continuing through the week



National Weather Forecast

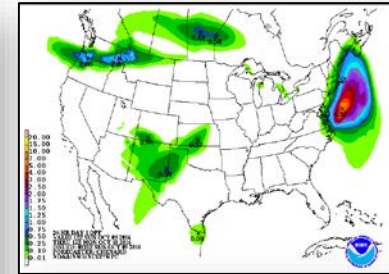
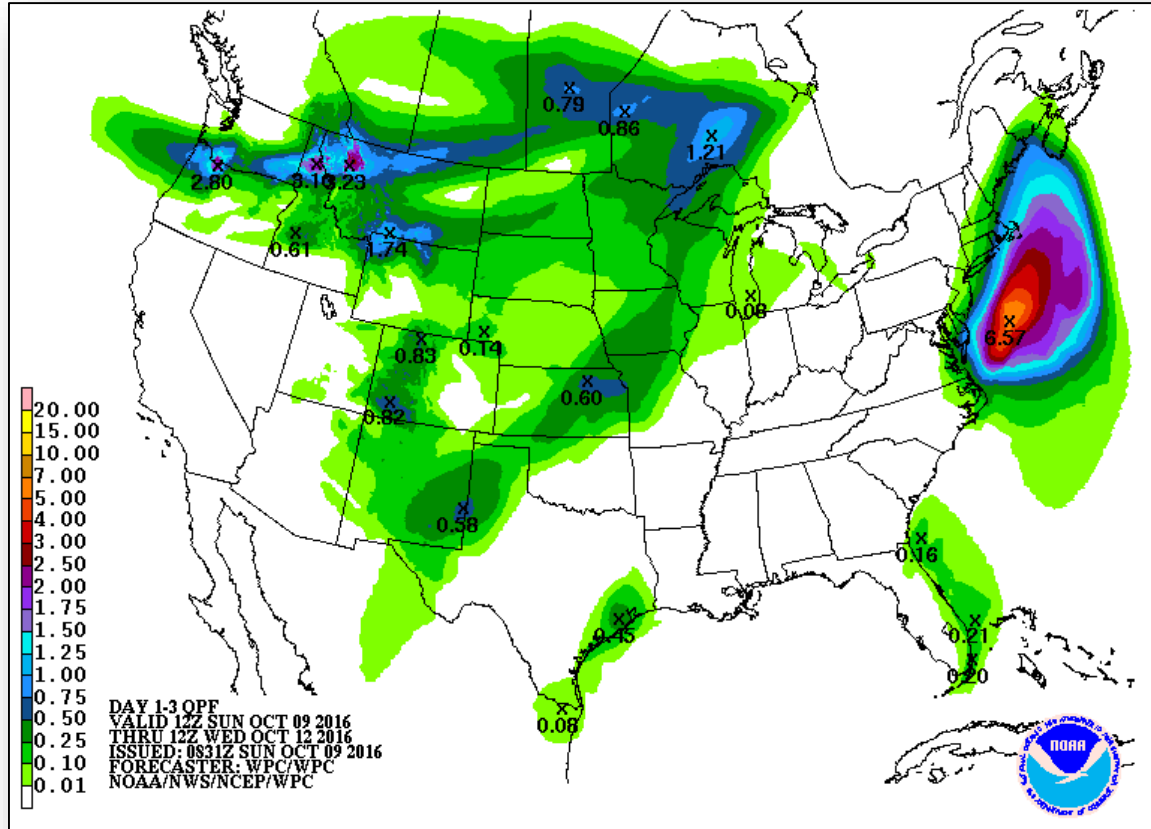


Today

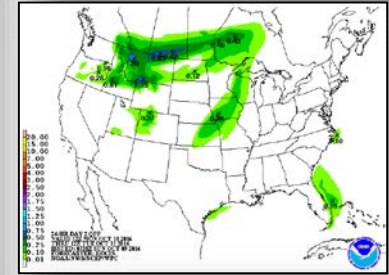


Tomorrow

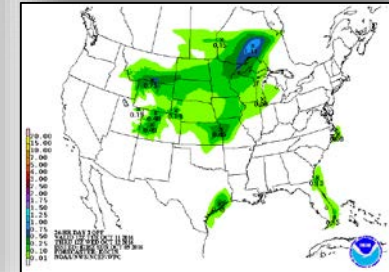
Precipitation Forecast – Days 1-3



Day 1

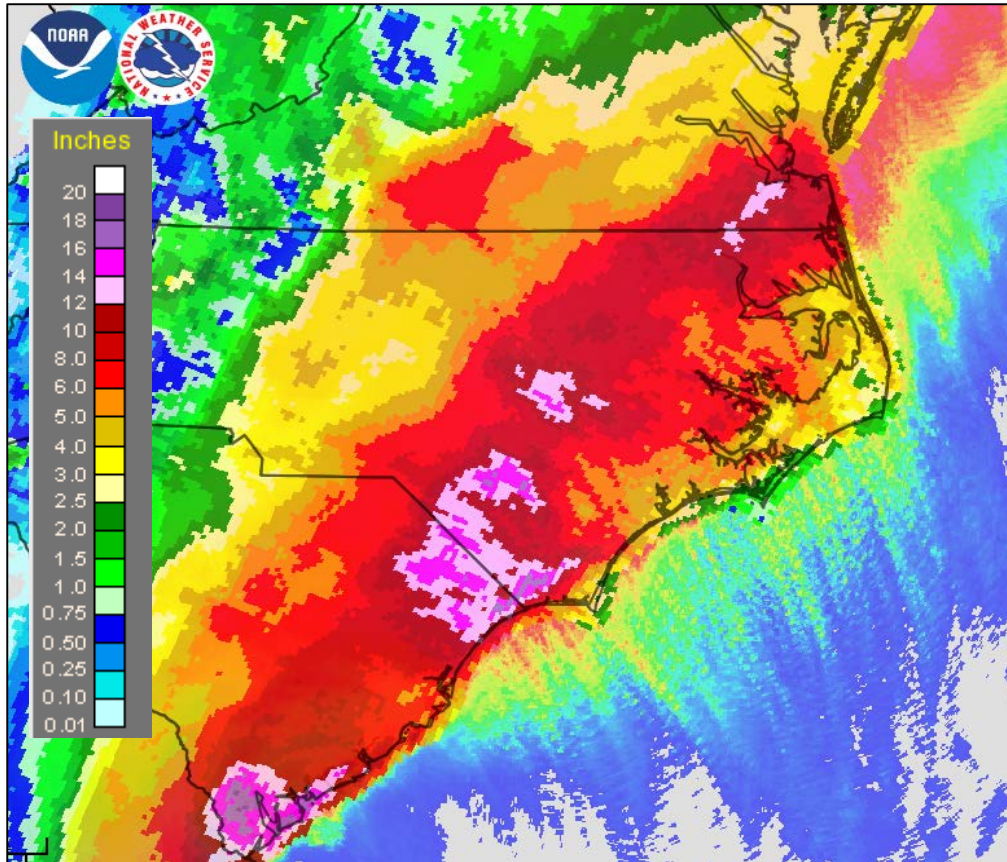


Day 2



Day 3

Matthew: Observed Rainfall (Past 48 Hours)



Preliminary Observed Rainfall:

17.49" at Savannah, GA

15.65" near Tar Heel, NC

14.82" at Fayetteville, SC

13.00" at Goldsboro, NC

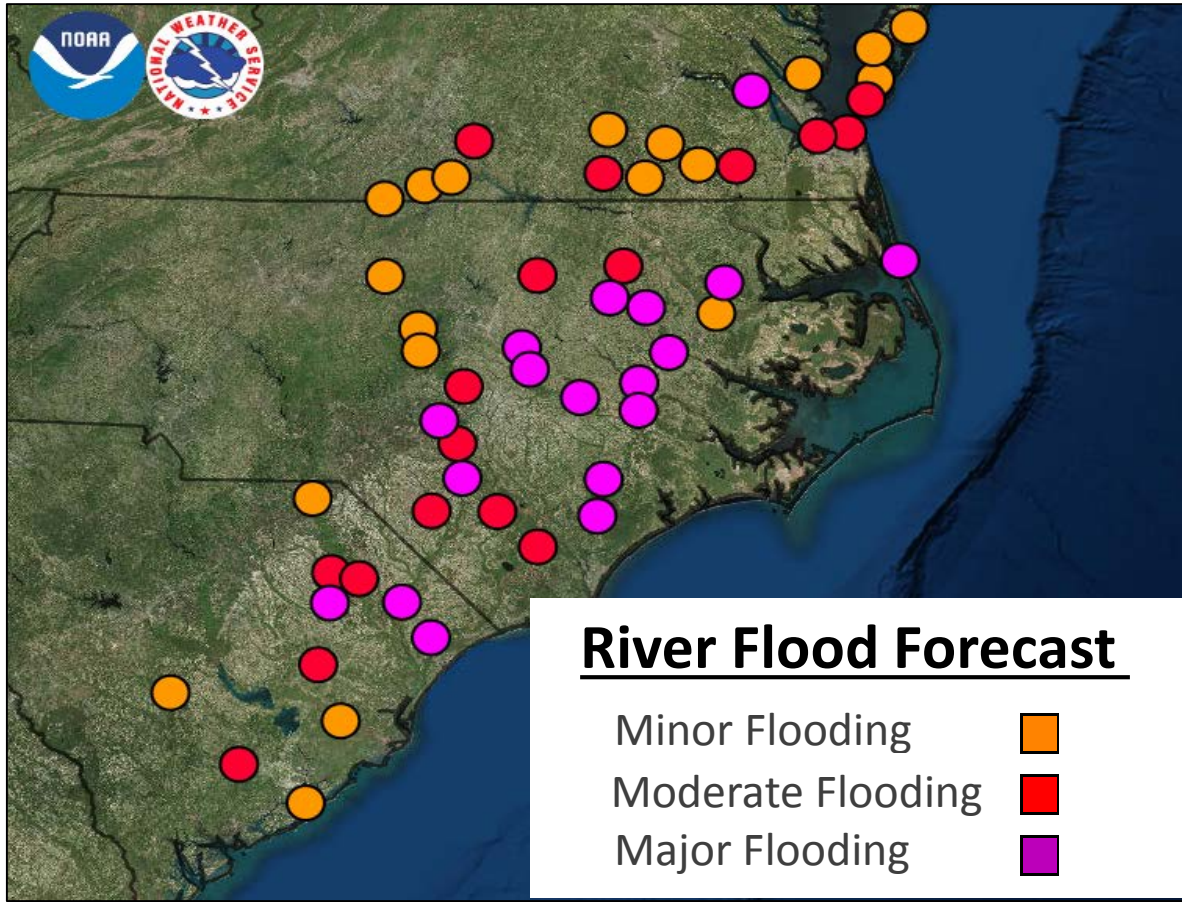
13.99" Beaufort, SC

12.92" near Elizabethtown, NC

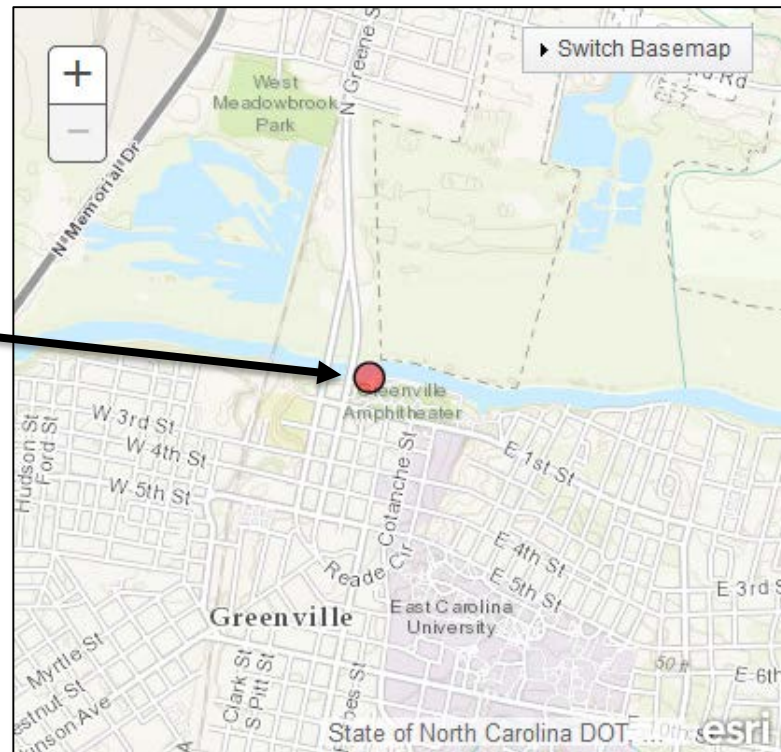
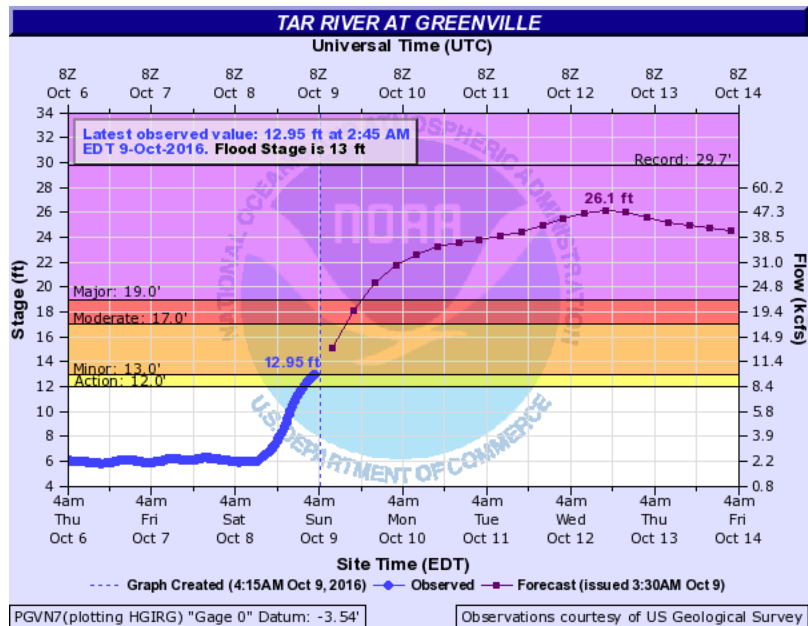
12.90" at Reevesville, SC

12.69" near Savannah, GA

Flash Flood and River Flood Outlooks

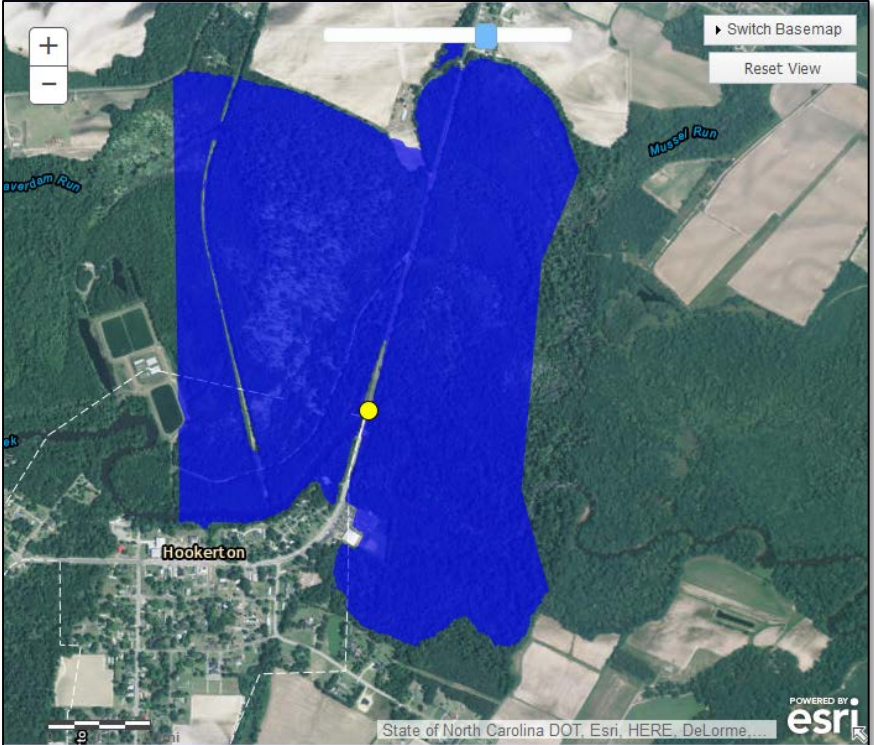
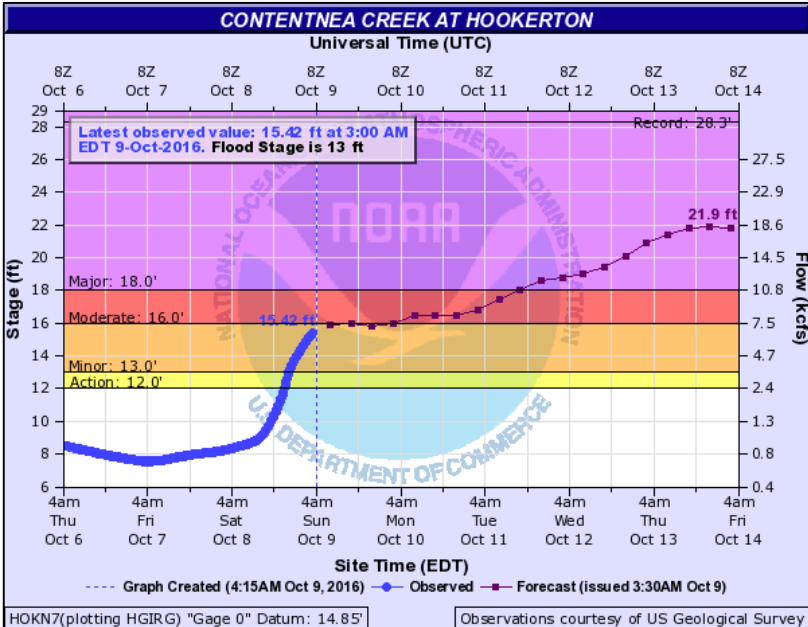


Tar River at Greenville, NC



At 24 feet, severe flooding for all areas adjacent to the river and tributaries, water will begin to flood the Pitt-Greenville Airport. Numerous homes adjacent to the river will flood countywide.

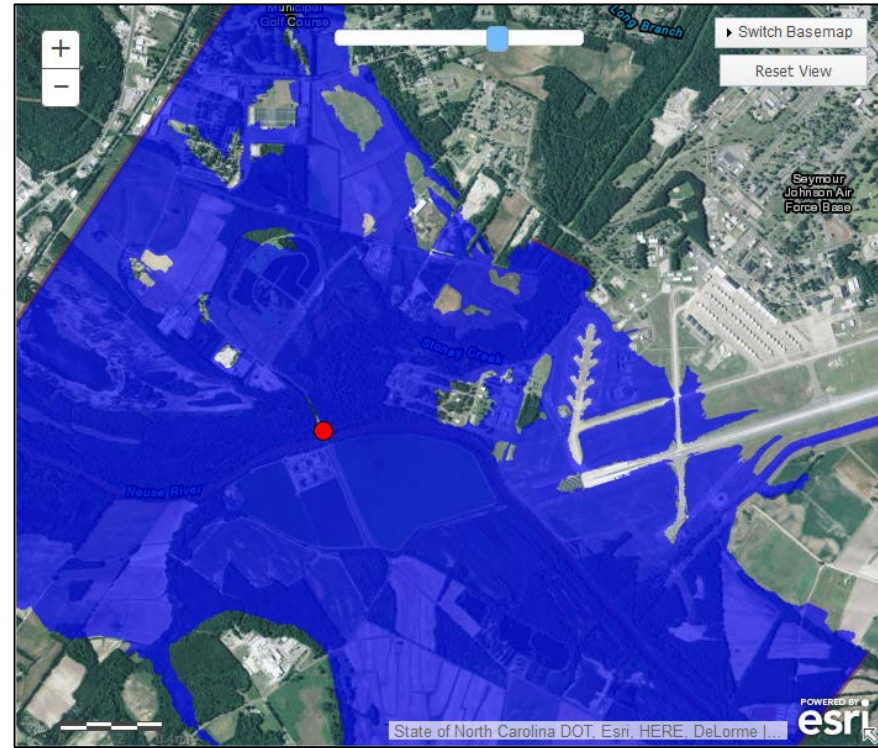
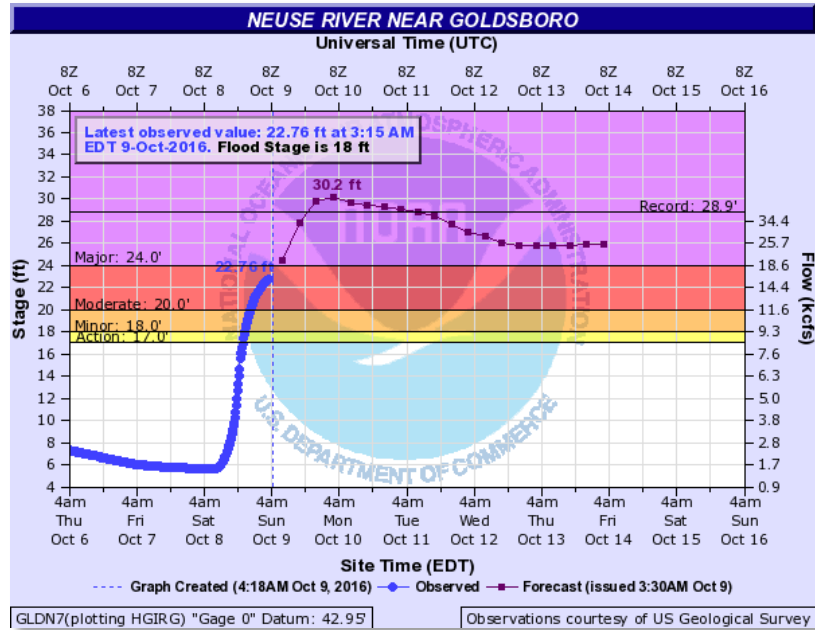
Contentnea Creek at Hookerton, NC



At 20 feet, several homes on the north side of the creek from Snow Hill to Hookerton will start to flood. Widespread flooding, impacting homes, in Grifton and Tick Bite.

Flood Inundation Graphic for 20.2 feet
 Blue indicates areas impacted by flooding
 Yellow indicates areas protected by levee system

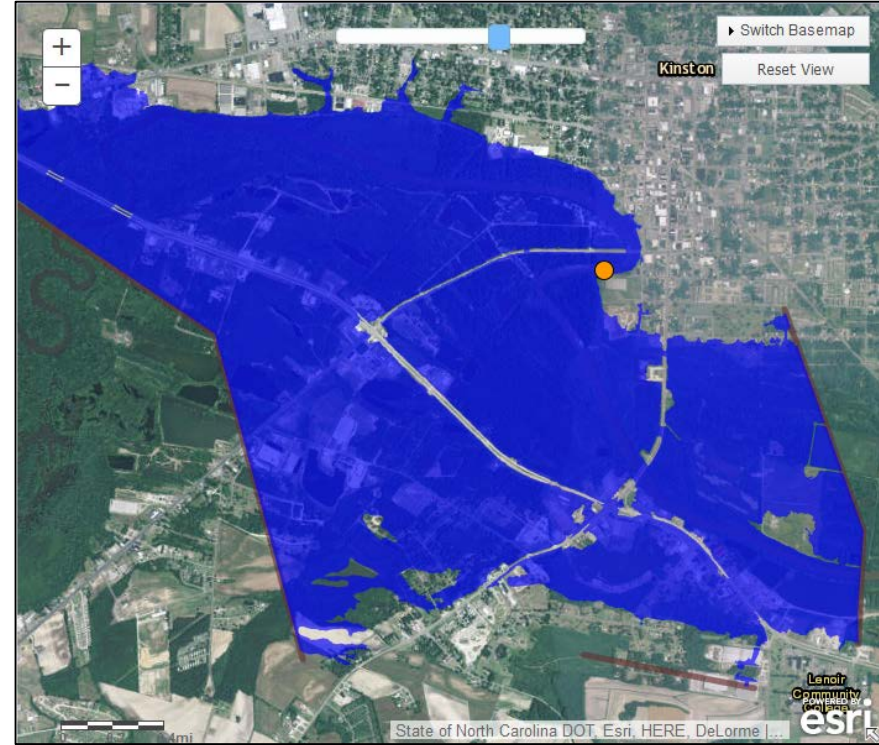
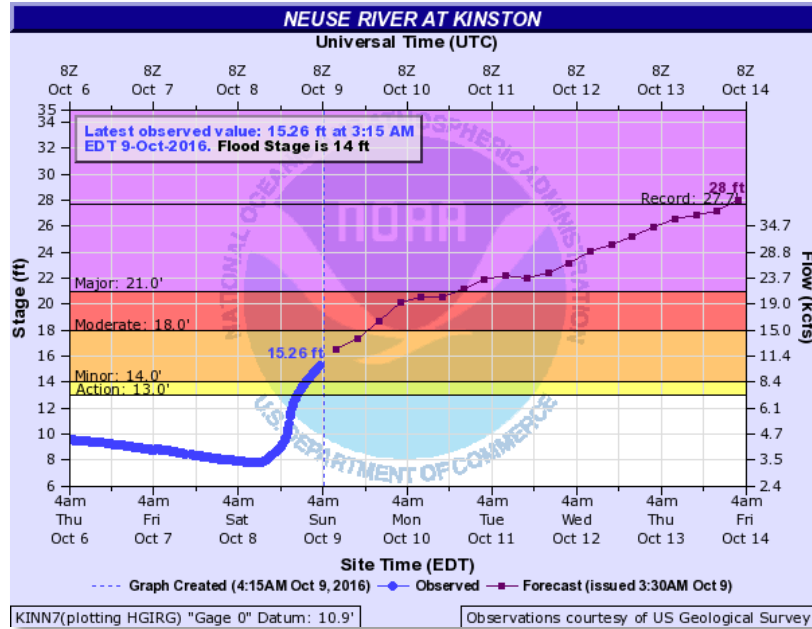
Neuse River Near Goldsboro, NC



At 31 feet, flooding of water treatment plant upstream at Smithfield. Evacuation of some homes in the Mar-Mac area and possibly the Buckhorn Island subdivision may be necessary. Riverview Trailer Park homes begin to flood. Flooding begins on Seymour Johnson Air Force Base.

Flood Inundation Graphic for 29.1 feet
Blue indicates areas impacted by flooding

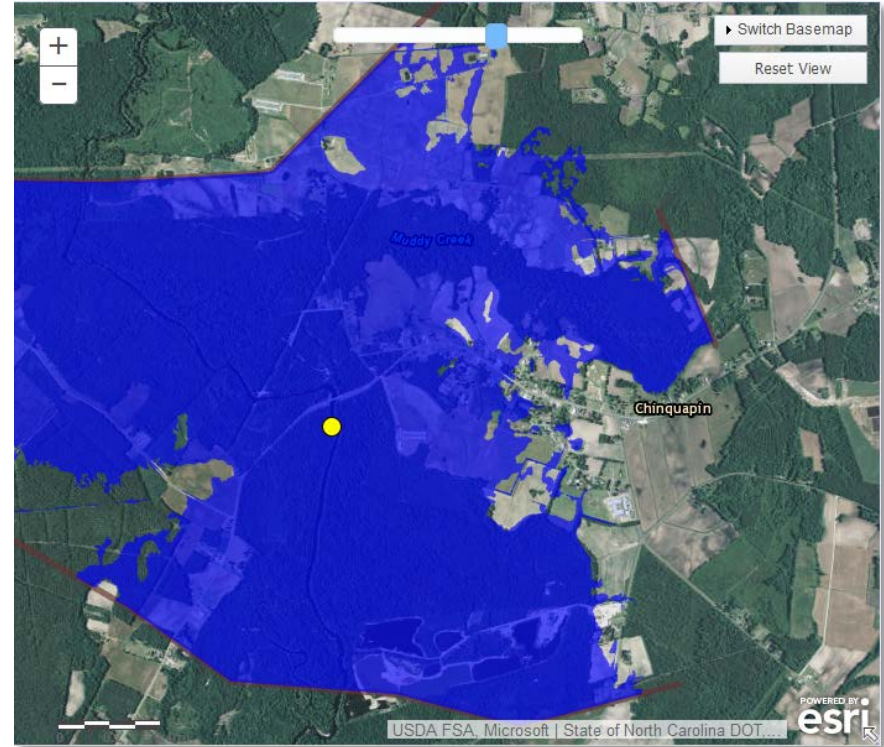
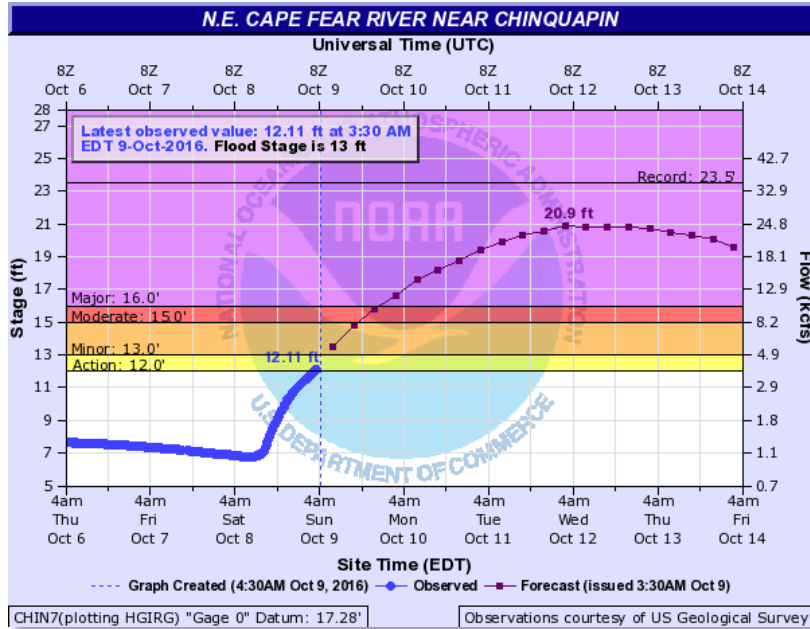
Neuse River at Kinston, NC



At 27 feet, severe flooding, numerous businesses and homes will flood. Up to two feet of water likely be on Highway 70 in Kinston. Numerous evacuations will be needed countywide.

Flood Inundation Graphic for 28.3 feet
Blue indicates areas impacted by flooding

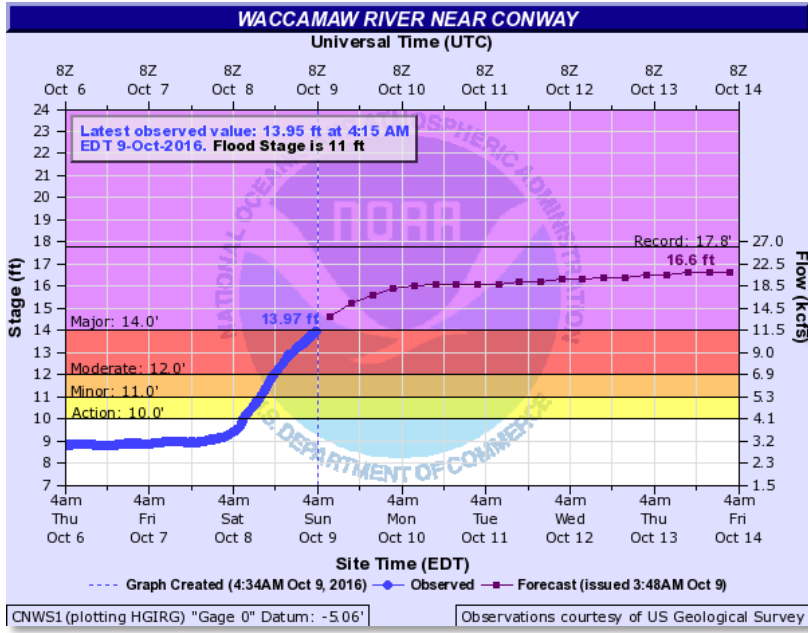
N.E. Cape Fear River Near Chinquapin, NC



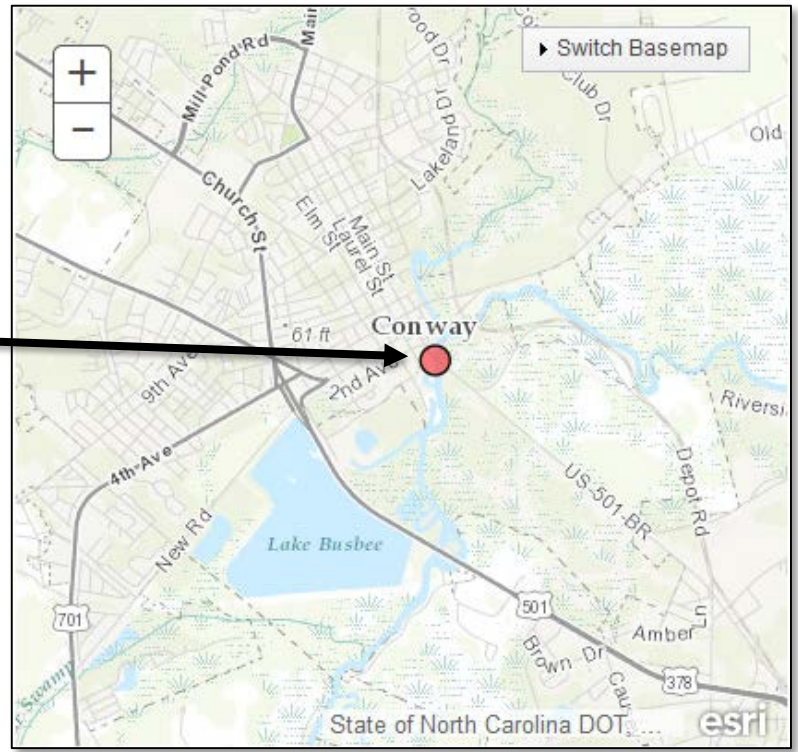
At 20 feet, widespread flooding, many evacuations needed along the Northeast Cape Fear River. Numerous homes and communities near the river will begin to flood.

Flood Inundation Graphic for 21.2 feet
Blue indicates areas impacted by flooding

Waccamaw River Near Conway, SC



At 15 feet, residential flooding in areas off Business 501, Highway 905, and Highway 90.



Post-Tropical Cyclone Matthew – Impacts



Impacts/Critical Infrastructure

- 9 confirmed fatalities: 2 in FL, 3 in NC and 4 in GA (ESF-6 update, 1:48 a.m. EDT)
- Numerous road closures throughout FEMA Region IV
- Sidney Lanier and Talmadge Memorial Bridges in GA remain partially closed; GA DoT requested additional inspectors
- Public transportation service suspended in Myrtle Beach, SC, Savannah, GA, Cape Fear and Wilmington, NC, and South FL Regional Transportation Rail and Sun Rail (Orlando, FL)
- Port Conditions – Multiple ports along the East Coast closed
- Charleston AFB/International Airport, SC closed
- Approximately 598 cellular sites down in FL, GA & SC (within the impacted area, 7% of cellular service is down)

Impacted State	Power Outages as of 7:15 a.m. EDT (DOE Eagle I*)	Change from October 8 Outages
Florida	471,548	-395,452
Georgia	203,137	-81,863
South Carolina	520,656	+310,656
North Carolina	664,821	+626,821
Virginia	260, 927	(initial report)
Total	2,121,089	

Impacted State	Cellular Tower Outages: Impacted Counties Only as of 5:00 a.m. EDT (ESF 2)
Florida	4%
Georgia	38%
South Carolina	15%
Total	7.3%

**Note: Customer outage data is provided by the Department of Energy's EAGLE-I system. Comprehensive National coverage of all electrical service providers is not available.*

Post-Tropical Cyclone Matthew - Response



Florida: [FEMA-3277-EM-FL](#) / [FEMA-4283-DR-FL](#)

- EOC remains at Full Activation
- [FEMA-4283-DR-FL](#) approved October 8, 2016 for 8 counties
- Mandatory evacuations for 2 counties, Indian River & Volusia (pop. 642k)
- [Shelters: 72 \(-2\) open with 344 \(-5,617\) occupants*](#)
US&R FL-TF1 and FL-TF2 deployed as state resources

Georgia: [FEMA-3379-EM-GA](#) / [FEMA-4284-DR-GA](#)

- EOC remains at Full Activation
- [FEMA-4284-DR-GA](#) approved October 8, 2016 for 6 counties
- Mandatory evacuations for 6 coastal counties
- [Shelters: 34 \(+4\) open with 4,501 \(-1,485\) occupants**](#)

South Carolina: [FEMA-3378-EM-SC](#)

- EOC remains at Full Activation
- Major power loss across Beauford County; high winds delaying restoration
- Mandatory evacuations for 8 coastal counties; over 175k evacuated
- [Shelters: 61 \(-2\) open with 4,522 \(-1,782\) occupants*](#)

North Carolina: [FEMA-3380-EM-NC](#)

- EOC increased to Full Activation (Level I)
- US&R / Swift Water Rescue Teams activated and pre-deployed
- Coordination for EMS Ambulance Strike teams, EMS medical EVAC buses ongoing
- [Evacuations: Mandatory for Cape Lookout; voluntary for Pender County](#)
- [Shelters: 80 \(+64\) open with 4,071 \(+3,872\) occupants*](#)
- State medical support shelter open in Goldsboro

FEMA Region IV:

- RRCC: Level I (24/7); RWC: Watch/Steady State
- IMAT-1 deployed to NC EOC
- IMAT-2 deployed to FL EOC
- LNOs deployed to FL, NC, SC & GA EOC's
- Hurricane Liaison deployed to National Hurricane Center
- Region IV DCE deployed to FL

Post-Tropical Cyclone Matthew - Response



FEMA HQ:

- NRCC: Level I (24/7) / NWC: Watch/Steady State
- National IMAT-West deployed to FL EOC
- National IMAT-East 1 deployed to Atlanta, GA
- National IMAT-East 2 deployed to LA (previous event)
- Region V IMAT deployed to SC EOC; Region V DCE deployed to GA
- Region IX IMAT-2 deployed to SC EOC
- Region VIII DCE deployed to SC

Logistics Management and Resource Support

- ISB Staging Areas established in Albany, GA & Fort Bragg, NC; [Staging Area at Fort A.P. Hill, VA closed](#)
- Logistics Staging Area (LSA) staffed/operational at North Field State, SC
- [Millions of commodities delivered; no unmet state requirements](#)

US&R activated/deployed the following assets:

- Federal Search & Rescue Coordination Group and Blue IST and cache deployed to Dobbins AFB, Atlanta, GA
- VA-TF1, VA-TF2, IN-TF1 (all type 1) & MO-TF1 (type 3) deployed to Hunter AAF, GA; VA-TF1 staging in NC
- MD-TF1 (type 3) and TN-TF1 (type 1) staging in SC
- NJ-TF1, OH-TF1, PA-TF1 (all type 1) staging in NC
- NY-TF1 (type 3) deployed to Fort Bragg, NC
- IN-HEPP staging in GA; MD-HEPP staging in SC

FEMA Disaster Communications supporting deployed teams and staging area locations:

- 85 MERS personnel deployed from all 6 detachments (10 Bothell; 19 Denton; 1 Denver; 22 Frederick; 6 Maynard; 27 Thomasville)
- 19 Mobile Communication Vehicles (MCOV) deployed
- [98 vehicles/trailers, including 6 Mobile Emergency Operational Vehicles \(MEOV\) and 5 Emergency Operational Vehicles \(EOV\) deployed](#)

Field Operations Division:

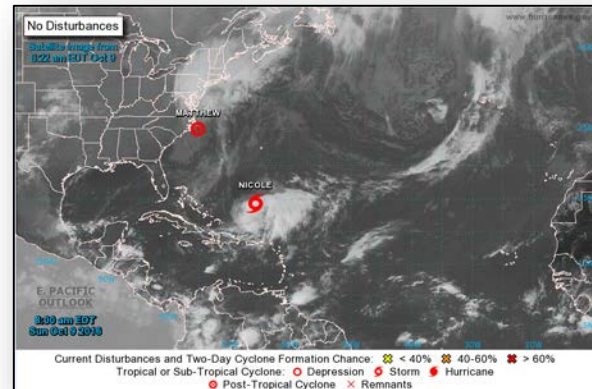
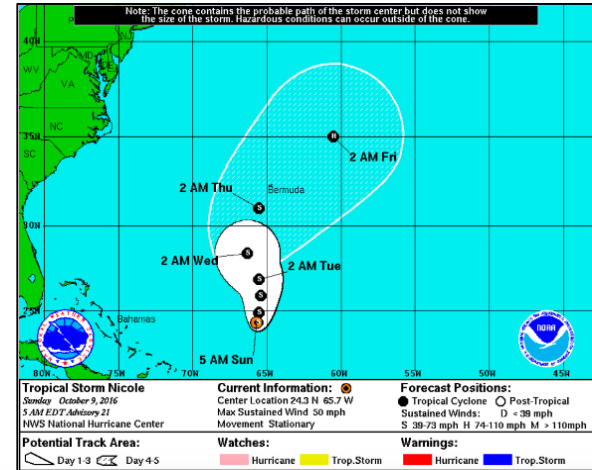
- [Reception, Staging, Onward Movement, Integration \(RSOI\)/Mobilization Center in Atlanta, GA](#)
- [56 FEMA Corps teams \(439 members\) committed to support hurricane operations](#)
- [2,105 personnel committed, 418 additional personnel requested to support hurricane operations](#)

Tropical Outlook – Atlantic



Tropical Storm Nicole (Advisory 21, as of 5:00 a.m. EDT)

- Located 555 miles S of Bermuda
- Remaining nearly stationary; expected to meander another day or so; a slow northward motion forecast on Monday
- Maximum sustained winds 50 mph
- Little change in strength forecast next 48 hours
- Tropical storm force winds extend 115 miles
- No coastal watches or warnings in effect

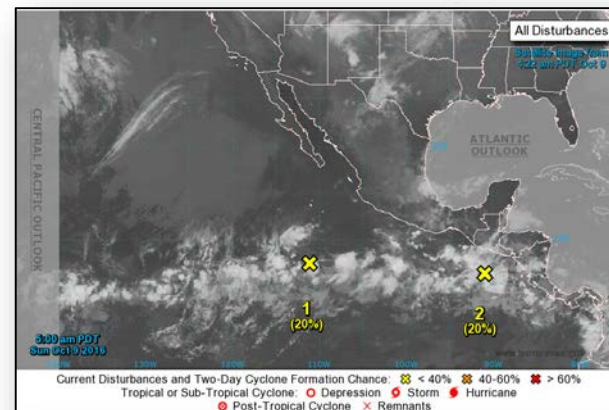


Tropical Outlook – Eastern Pacific



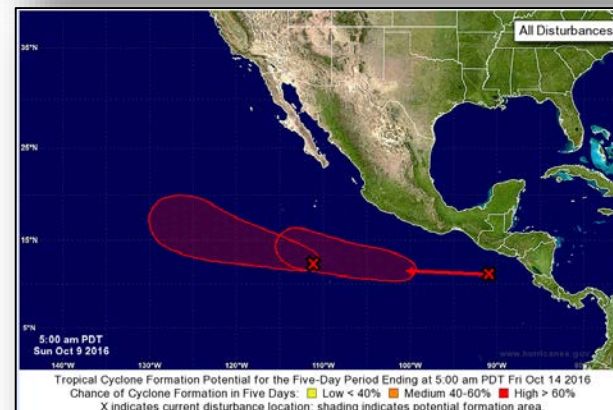
Disturbance 1 (as of 8:00 a.m. EDT)

- Located several hundred miles S through SW of southern tip of Baja California peninsula
- Moving WNW to NW
- Expected to gradually consolidate next couple of days
- Tropical depression likely to form later this week
- Formation chance through 48 hours: Low (20%)
- Formation chance through 5 days: High (70%)



Disturbance 2 (as of 8:00 a.m. EDT)

- Located a couple hundred miles S of coasts of El Salvador and Guatemala
- Moving W then WNW
- Conditions expected to generally be conducive for development
- Tropical depression likely to form later this week
- Formation chance through 48 hours: Low (20%)
- Formation chance through 5 days: High (70%)

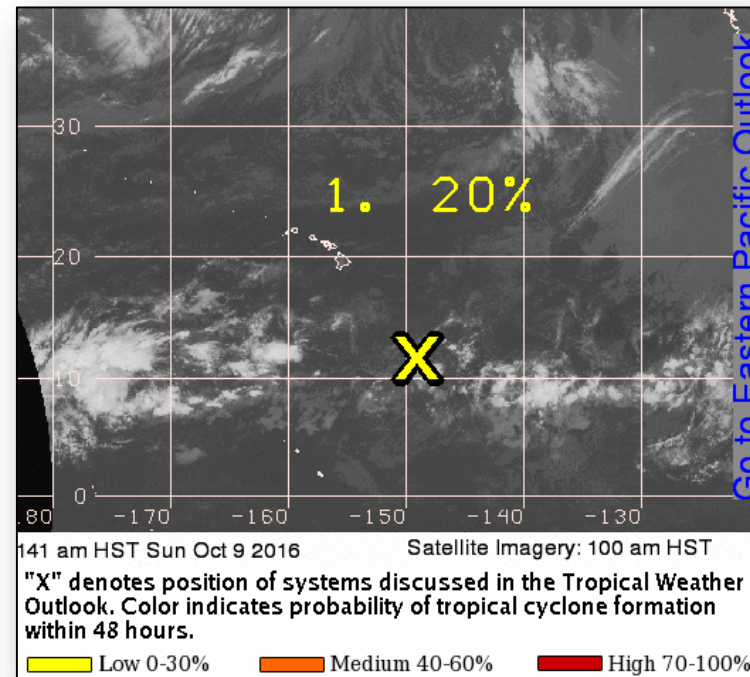


Tropical Outlook – Central Pacific



Disturbance 1 (as of 8:00 a.m. EDT)

- Located 690 miles SE of Hilo, HI
- Moving W at 10 mph
- Development, if any, will be slow to occur over next several days
- Formation chance through 48 hours: Low (20%)



Joint Preliminary Damage Assessments



Region	State / Location	Event	IA/PA	Number of Counties		Start – End
				Requested	Complete	
V	Wisconsin	Severe Storms and Flooding September 21 – 22, 2016	PA	12	0	10/4 – TBD
	Minnesota	Severe Storms and Flooding September 21 – continuing, 2016	PA	9	0	10/10 – TBD
			IA	4	0	10/10 – TBD
VII	Iowa	Severe Storms and Flooding September 21 – October 3, 2016	IA	9	9	9/29 – 10/3
			PA	18	0	10/12 - TBD

Disaster Requests & Declarations



Declaration Requests in Process		Requests APPROVED (since last report)	Requests DENIED (since last report)
1	Date Requested	2	0
Navajo Nation – DR Severe Storms and Flooding	September 21, 2016		
FL – DR (Expedited) Hurricane Matthew (Amended)	October 7, 2016	Declared October 8, 2016	
GA – DR Hurricane Matthew	October 7, 2016	Declared October 8, 2016	

Major Disaster Declaration – Florida



FEMA-4283-DR-FL

- Major Disaster Declaration was approved on October 8, 2016 for the State of Florida
- For Hurricane Matthew during the period October 3, 2016, and continuing
- Provides:
 - Debris removal and emergency protective measures (Categories A and B), including direct federal assistance, under the Public Assistance program, for 8 counties
 - Hazard Mitigation statewide
- FCO is Terry L. Quarles



Major Disaster Declaration – Georgia

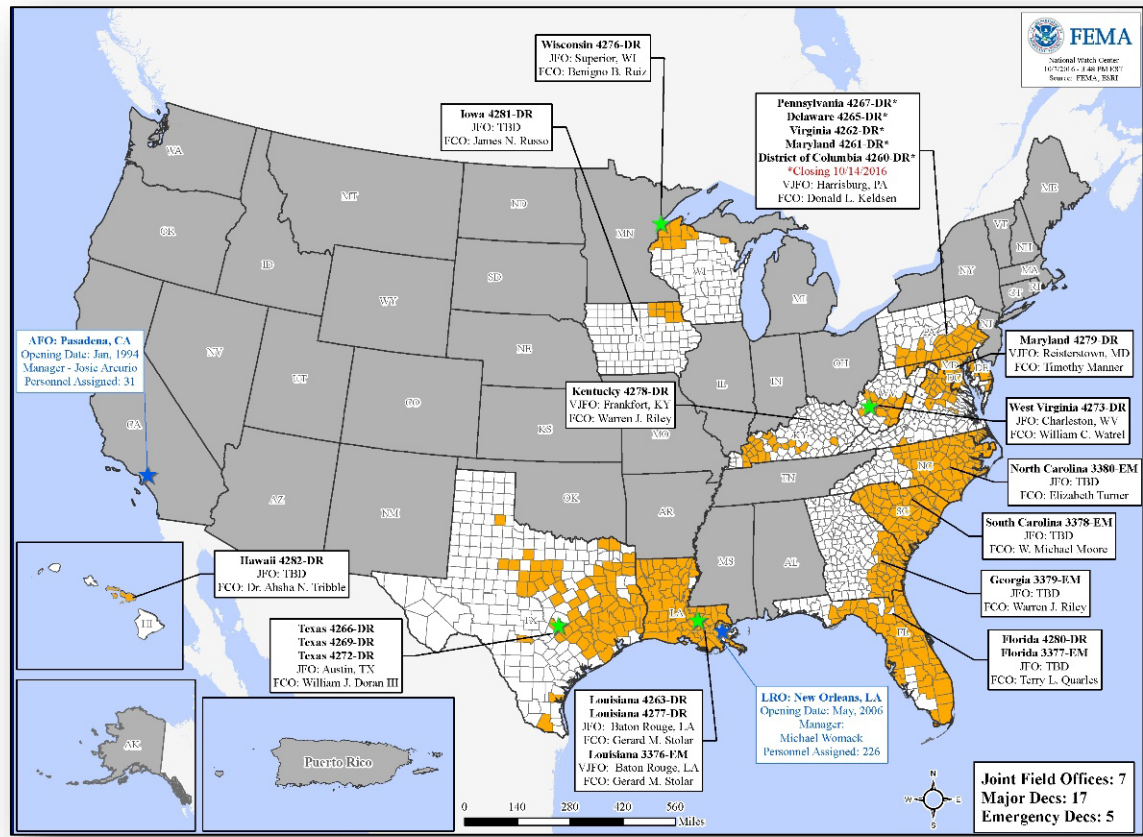


FEMA-4284-DR-GA

- Major Disaster Declaration approved on October 8, 2016 for the State of Georgia
- For Hurricane Matthew during the period October 4, 2016, and continuing
- Provides
 - Debris removal and emergency protective measures (Categories A and B), including direct federal assistance, under the Public assistance Program for 6 counties
 - Hazard Mitigation statewide
- FCO is Warren J. Riley



Open Field Offices



Readiness – Deployable Teams and Assets



Resource	Status	Total	FMC Available		Partially Available	Not Available	Detailed, Deployed, Activated	Comments	Rating Criterion
FCO	Yellow	35	6	17%	0	0	29		OFDC Readiness: FCO Green Yellow Red Type 1 3+ 2 1 Type 2 4+ 3 2 Type 3 4+ 3 2
FDRC	Red	10	1	10%	0	3	6		FDRC 3 2 1
US&R	Green	28	16	57%	0	0	12	Blue IST to GA VA-TF1, VA-TF2, IN-TF1 (all Type 1) & MO-TF1 (Type 3) to GA MD-TF1 (Type 3) & TN-TF1 (Type 1) in SC NJ-TF1, OH-TF1, PA-TF1 (all Type 1) staging in NC NY-TF1 (Type 3) to NC IN-HEPP staging in GA; MD-HEPP staging in SC (FL-TF1 & FL-TF2 deployed as FL state asset)	<ul style="list-style-type: none"> Green = Available / FMC Yellow = Available / PMC Red = Out-of-Service Blue = Assigned / Deployed
National IMAT	Red	3	0	0%	0	0	3	Deployed: East 1 to Region IV (Hurricane Matthew) East 2 to LA (DR-4277) West to FL (Hurricane Matthew)	<ul style="list-style-type: none"> Green: 3 available Yellow: 1-2 available Red: 0 avail (<i>Individual N-IMAT red if 50% of Section Chiefs and / or Team Leader is unavailable for deployment.</i>)
Regional IMAT	Yellow	13	5	38%	0	0	8	Deployed: Region IV-1 to NC (Hurricane Matthew) Region IV-2 to FL (Hurricane Matthew) Region V & Region IX-2 to SC (Hurricane Matthew) Region VI-2, Region VIII & Region X to LA (DR-4277) Region VII to IA (DR-4281)	<ul style="list-style-type: none"> Green: >6 teams available Yellow: 4 - 6 teams available Red: < 4 teams available <i>R-IMAT also red if TL Ops / Log Chief is unavailable & has no qualified replacement</i>
MERS	Green	18	14	78%	0	0	4	Deployed: Tallahassee and Ocala, FL Washington, DC Atlanta, Thomasville, Albany and Dobbins ARB, GA Raleigh and Fort Bragg, NC Columbia and West Columbia, SC Chicago, IL (Chicago Marathon)	<ul style="list-style-type: none"> Green = >66% available Yellow = 33% to 66% available Red = <33% available

Readiness – National and Regional Teams



Resource	Status	Total	FMC Available		Partially Available	Not Available	Status	Comments	Rating Criteria
NWC	Green	5	5	100%	0	0	Not Activated		<ul style="list-style-type: none"> • Green = FMC • Yellow = PMC • Red = NMC
NRCC	Green	2	2	100%	0	0	Activated	Level I, 24/7 (Hurricane Matthew)	
HLT	Green	1	1	100%	0	0	Activated		
RRCCs	Green	10	10	100%	0	0	Activated	Region IV at Level I, 24/7 (Hurricane Matthew)	
RWCs/MOCs	Green	10	10	100%	0	0	Activated		



FEMA

FEMA's mission is to support our citizens and first responders to ensure that as a nation we work together to build, sustain, and improve our capability to prepare for, protect against, respond to, recover from, and mitigate all hazards.